
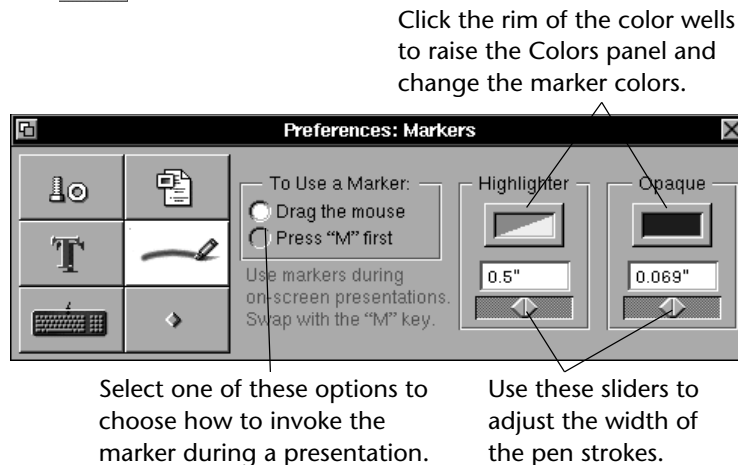

Adjust the color and stroke width of your markers, as well as decide how to invoke them during a presentation by setting your preferences in the *Preferences* panel.

To raise this panel, select *Preferences* from the Info menu and select the  button to display the *Markers* preferences.



During a slide show, markers are invoked in one of two ways. If the *Drag the Mouse* option is selected, the marker will appear during a slide show when the mouse is click-dragged across the screen. This turns your mouse into a *Highlighter*. To switch to the *Opaque* marker, press M on the keyboard. Press M again to switch back.

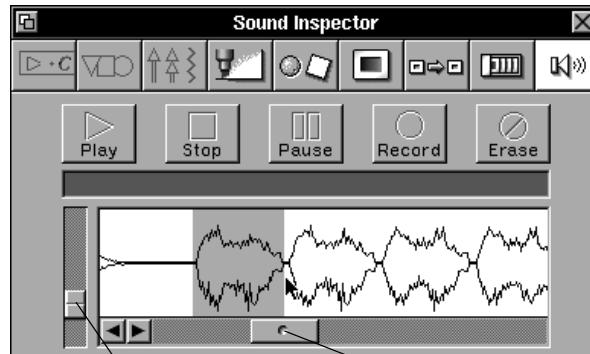
If *Press "M" first* is selected, you must press M on your keyboard to invoke the marker. You can then draw with it by dragging the mouse. To switch between markers, press M again.

The *Highlighter* marker is broad and makes transparent strokes, useful for highlighting on-screen text. To change its color, click the rim of the color well to raise the *Colors* panel, then drag in your preferred marker color. (See the NEXTSTEP User's Guide for more information about working with the *Colors* panel). To adjust the width of the pen stroke, drag the slider beneath the color well.

The *Opaque* marker is thinner like a felt tip pen and is not transparent. It is used for writing notes on the screen. Its color and pen width can be adjusted in the same way as the *Highlighter*.



To clear on-screen scribbles or marks during on-screen playback, press C.



Drag this slider to change how the sound wave is displayed.

Drag here to scroll through the sound wave.

Concurrency API

Concurrency features an accessible API for developers interested in remotely playing slide shows. Through the API, developers can load documents and select slide shows to play. Once the slide show is selected, developers can control Concurrency as if they were using the *Slide Show* panel on-screen.

Additionally, developers can create their own loadable transitions for on-line slide shows. For more information, please contact Lighthouse Design's technical support staff at concurrency@lighthouse.com, or if you have access to the World Wide Web, try our web server (<http://www.lighthouse.com>).

Highlighting Points During a Slide Show

When delivering a presentation, you may wish to point out or circle a diagram on a slide or highlight a word for added effect. Concurrency allows you to draw on the screen with digital markers, by dragging the mouse on a slide while playing a slide show.

You can either highlight text with the *Highlighter* or scribble notes on the screen with the *Opaque* marker.

If you set a transition for a master slide, all of the slides tracking that master will use the same transition. See Chapter 10 for more information about working with master slides.




To enable your transitions, make sure the *Use Transitions* check box is selected on the *Slide Show* panel.

Attaching Sounds

Sounds or voice annotation can be attached to each slide so that presentations delivered on-line are accompanied by narration or sound effects. You'll hear the attached sound when you play a slide show, at the time a slide is first displayed.

To add sound to your presentation, select a slide by clicking its minislide in the slide sorter. Raise the Inspector as described in the previous section.

Once the Inspector appears, click the  button to display the *Sound Inspector*.





Click the *Record* button to begin recording. Once a sound has been recorded, use the *Play*, *Stop*, *Pause* and *Erase* buttons accordingly.

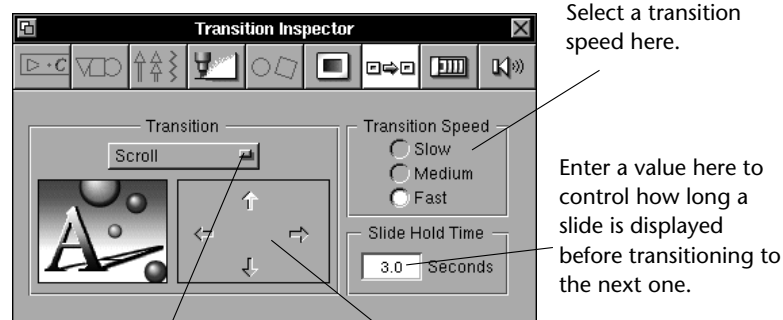
Use the slider to modify the scale at which a sound is displayed in the *Sound Inspector*. To select individual pieces of a sound wave, drag over the desired portion, while holding down your mouse button. Once selected, *Play*, *Erase*, *Cut*, *Copy* or *Paste* the selection.

Refer to your NEXTSTEP User's Guide for more information.

Setting Transitions

Slide transitions are graphical effects displayed during on-screen slide shows. You decide how one slide transitions to the next (Scroll, Iris, etc.) by using the *Transition Inspector*. Select either a master slide or an individual slide and then raise the Inspector by choosing *Inspector* from the Tools menu, or by clicking  on the button ribbon.

Once the Inspector appears, click the  button to display the *Transition Inspector*.



Choose the transition type from the pop-up list (the *Scroll* transition is shown here.)

Depending on the transition, an options panel will appear here, allowing further customization.

Select a transition speed here.

Enter a value here to control how long a slide is displayed before transitioning to the next one.

Use the *Transition* pop-up list to choose from many transition effects. Once selected, you can further customize a transition, depending on the effect chosen. For example, in the picture above the *Scroll* transition has been selected. An options panel automatically appears to the right of this transition, allowing you to control in which direction the slide will scroll to reveal the next one.



You can add multiple transition effects to the same slide show.

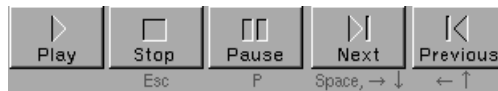
To control how fast a transition occurs, select a *Slow*, *Medium* or *Fast* transition speed.

To select the number of seconds spent displaying each slide during playback of a slide show, enter a value directly into the *Slide Hold Time* field.

Click *Next* to display the next slide in a show. Click *Previous* to show the preceding slide and pause the show.



Note that beneath the Stop, Pause, Next and Previous buttons are grayed out keyboard shortcuts, also used to execute these commands during on-screen presentations.

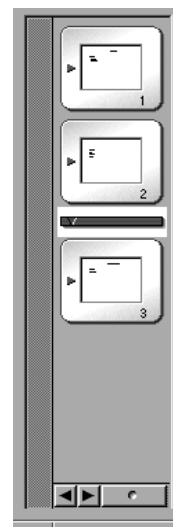


Skipping a Slide

To skip a slide in your presentation, select it in the slide sorter and then choose *Skip* from the Slides menu, or click the button on the slide tools ribbon. The minislide will rotate to show only its edge in the slide sorter, indicating that it will be skipped.



Slide 3 in the slide sorter to the left is currently selected.



When the Skip command is chosen, the slide is rotated so only its edge shows, and slide 4 in the first example has now become slide 3.

When a slide has been skipped, the remaining slides automatically renumber to reflect this.

Choose *Don't Skip* or click the tools ribbon button again to bring the slide back into the slide show.



Skipped slides are not printed. For more on printing your presentation, refer to the next chapter.

and can be customized using the *Slide Hold Time* field on the *Transition Inspector*, described later in this chapter.

Advance On Mouse Click does exactly that: a slide will remain on the screen until you click the mouse to advance to the next one.

Repeat Show

Normally, slide show play stops when the last slide is finished. However, if *Repeat Show* is selected, the slide show will progress from the last slide to the first, and so on forever until the *Stop* button is clicked or the Escape key is pressed.

Start From Selected Slide

When *Start From Selected Slide* is selected, clicking a *Play* button will start the slide show playing from the currently selected slide. When this box is deselected, slide shows are played from the first slide.

Play Sounds

If the *Play Sounds* check box is selected, the sounds attached to slides (if any) will be played as the slides are displayed during playback. Add sound through the *Sound Inspector*, described later in this chapter.

Use Transitions

If the *Use Transitions* check box is selected, Concurrency will use the transition effect specified in the *Transition Inspector* to segue from one slide to the next. Adding transition effects is described later in this chapter.

If the *Use Transitions* button is deselected, transitions are ignored.

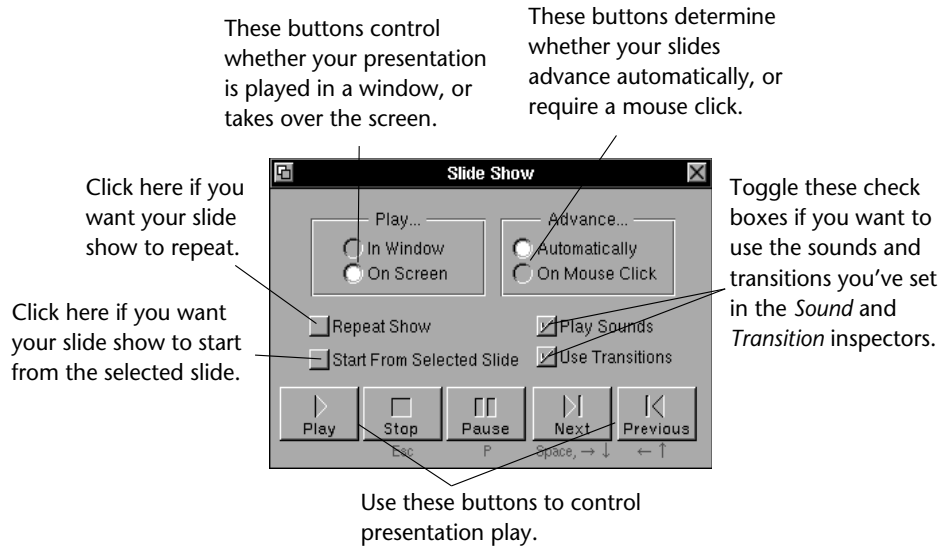
Play, Stop, Pause, Next and Previous

Use the buttons at the base of the *Slide Show* panel to start and stop a slide show in a window, and to navigate through its slides.

Click the *Play* button to start a slide show or to continue one that has been paused. Click *Stop* to end a slide show.

Pause will leave a slide show running, but keep it from advancing until you click *Play*, or click *Pause* again.

Use the *Slide Show* panel to configure and play a slide show.



Play In Window/On Screen

Choose *Play In Window* to play a slide show in the slide pane. Choose *Play On Screen* when you want the slide show to take over the entire screen. Slides will be scaled to fit your monitor.



*If you want your presentation sized to fit the screen you're working in (so that when you play a slide show on-screen no scaling is applied to it), select this option in the *Slides Layout* panel, explained in the next chapter. This will ensure that any graphics added to your presentation do not become distorted when you play your slide show.*



*You can add a colored margin that surrounds your slides during a slide show, by selecting the slide in the slide sorter and using the controls found in the *Slides Layout* panel. Refer to the next chapter for more information.*

Advance Automatically/On Mouse Click

Use these buttons to choose how you advance from one slide to the next during playback of a slide show.

If you choose *Automatically*, each slide is displayed for a fixed amount of time before it is replaced by the next slide. The default is three seconds,




Chapter 14


Playing a Slide Show

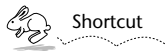
If you're delivering your presentation from a computer, Concurrence gives you the tools to add that extra polish—from special transition effects between slides, to voice overs, to using the digital markers for emphasizing words on the screen during delivery. This chapter describes how to use these tools, as well as how to operate the play panel.


Playing A Slide Show

There are two ways to play a slide show on your computer—in a window or covering the entire screen. To take a quick look at your slide show in action, play it by using the miniature slide show controls at the bottom right corner of the slide show window.

Click the *Play* button  to start a slide show, and click the *Stop* button  to end it. Clicking the *Pause* button  will suspend a slide show in progress, and resume it where you left off if you click it again.

For more control over the playback of your slide show, raise the *Slide Show* panel by choosing *Slide Show Panel* from the Slide Show submenu of the Tools menu, or by clicking the  button on the slide tools ribbon.



You can also raise the Slide Show panel by command-clicking the miniature play button .