

# WHAM - Waveform Hold and Modify

## Help Index

The Index lists all help topics available for Waveform Hold and Modify. To see topics not on the screen, scroll down using the arrow keys or the scroll bars.

To learn how to use Help, press F1.

### Keyboard

[WHAM Keys](#)

### Commands

[File Menu Commands](#)

[Edit Menu Commands](#)

[View Menu Commands](#)

[Effects Menu Commands](#)

[Options Menu Commands](#)

### How To...

[Change the Volume of Part of a Sound](#)

[Clear Part of a Sound](#)

[Convert an Amiga Sound](#)

[Copy Sound to the Clipboard](#)

[Delete Part of a Sound](#)

[Edit Information about a Sound](#)

[Insert Sound from the Clipboard](#)

[Load a Sound from Disk](#)

[Play a Sound](#)

[Record a Sound](#)

[Reverse Part of a Sound](#)

[Save a Sound to Disk](#)

[Save Part of a Sound to Disk](#)

[Select Part of a Sound](#)

[Speed Up or Slow Down a Sound](#)

[The Button Bar](#)

[The Status Line](#)

[Questions](#)

## WHAM Keys

Use the following keys in Waveform Hold and Modify;

<b>Press</b>	<b>To</b>
Left Arrow	Move the cursor left by one screen position; that is, by a number of <u>samples</u> equal to the scale.
Right Arrow	Move the cursor right by one screen position.
Page Up	Moves the cursor left by the width of the window.
Page Down	Moves the cursor right by the width of the window.
Home	Move the cursor to the start of the sound.
End	Move the cursor to the end of the sound.
P	Play the entire sound.
Ctrl+P	Play the selected portion of the sound, or the current sound from the cursor.
Shift+Del	Cut the sound, or a selected portion of it, to the clipboard.
Ctrl+Ins	Store a copy of the sound, or of a selected portion of it, in the clipboard.
Shift+Ins	Paste the contents of the clipboard into the current sound.
Del	Delete a selected portion of the current sound.
Ctrl+N	Zoom in on the selected portion of the current sound.
Ctrl+O	Zoom out to view the current sound in its entirety.
Alt+F4	Exit from WHAM.

## File Menu Commands

### **File|Record new**

Opens the [recording dialog](#), allowing you to record a sound through a sound card.

See Also

[Recording a sound](#)

### **File|Open**

Opens an existing sound file.

See Also

[Loading a Sound from Disk](#)

[Sound File Formats](#)

### **File|Save**

Saves the current sound file to disk.

See Also

[Saving a Sound to Disk](#)

[Sound File Formats](#)

### **File|Save As**

Saves the current sound file to disk under a different name.

See Also

[Saving a Sound to Disk](#)

[Sound File Formats](#)

### **File|Information**

Allows you to view and change [information](#) about the current sound, such as the title and copyright information.

See Also

[File Information Dialog](#)

### **File|System information**

Displays information about your hardware; this includes sampling/playback rates and maximum [resolutions](#)

### **File|Exit**

Exits from Waveform Hold and Modify.

## Edit Menu Commands

### **Edit|Cut**

Puts the selected part of the current sound into the Clipboard and removes it from the sound. Any previous Clipboard contents will be replaced.

If nothing is selected, the entire sound will be cut into the Clipboard.

See Also

[Copying Sound to the Clipboard](#)

[Selecting Part of a Sound](#)

### **Edit|Copy**

Places a copy of the selected part of the current sound into the Clipboard. Any previous Clipboard contents will be replaced.

If nothing is selected, the entire sound will be copied into the Clipboard.

See Also

[Copying Sound to the Clipboard](#)

[Selecting Part of a Sound](#)

### **Edit|Paste**

Inserts sound from the Clipboard into the current sound. The new sound can be inserted at the start of the current sound, appended to the end, inserted at a selected point or be made to replace the current sound.

See Also

[Inserting Sound from the Clipboard](#)

### **Edit|Clear**

Clears the selected part of the current sound, replacing it with silence. If nothing is selected, the entire sound is cleared.

See Also

[Clearing Part of a Sound](#)

### **Edit|Delete**

Removes the selected part of the current sound. If nothing is selected, the entire sound will be deleted.

See Also

[Deleting Part of a Sound](#)

### **Edit|Delete unselected**

Removes all but the selected part of the current sound.

See Also

[Deleting Part of a Sound](#)

[Selecting Part of a Sound](#)

### **Edit|Copy to file**

Saves the selected part of the current sound to disk.

See Also

Saving Part of a Sound to Disk  
Selecting Part of a Sound

## View Menu Commands

### **View|Actual size**

Displays the waveform at actual size. Each line on the display represents one sample.

### **View|1:2 scale**

Displays the waveform at a 1:2 scale. Each line on the display represents two samples.

### **View|1:5 scale**

Displays the waveform at a 1:5 scale. Each line on the display represents five samples.

### **View|1:10 scale**

Displays the waveform at a 1:10 scale. Each line on the display represents ten samples.

### **View|1:100 scale**

Displays the waveform at a 1:100 scale. Each line on the display represents 100 samples.

### **View|Zoom in**

Displays the waveform at the smallest scale at which the entire selection is visible.

### **View|Entire sound**

Zooms out to display the entire sound.

### **View|Full height**

Displays the waveform at full height, adjusting the WHAM window's height.

### **View|Half height**

Displays the waveform at half height, adjusting the WHAM window's height. Use this to conserve screen space.

### **View|Solid display**

Displays the waveform in solid form.

### **View|Outline display**

Displays the waveform as a line.

### **View|Blob display**

Displays the waveform as a symmetrical blob.

### **View|Point display**

Displays the waveform as a series of scattered points.



## Effects Menu Commands

### Effects|Change sign

Changes the sign of the current sound. This command allows signed sounds, such as Amiga sounds, to be converted to the Windows format.

See Also

[Converting Amiga Sounds](#)

### Effects|Decode Mu-Law data

Converts the current sound from mu-law samples to linear samples. Be careful, because if the sound is not in mu-law format, this function will really make a mess of it.

### Effects|Expand to 16 bits

Expands the current sound's resolution to 16 bits. This function is enabled only when the current sound has an eight-bit resolution.

### Effects|Reduce to 8 bits

Reduces the current sound's resolution to eight bits. This function is enabled only when the current sound has a sixteen-bit resolution.

### Effects|Reverse

Reverses the selected part of the current sound, causing it to play backwards. If nothing is selected, the entire sound is reversed.

See Also

[Reversing Part of a Sound](#)

### Effects|Volume|Increase (200%)

Increases the volume of the selected part of the current sound, making it twice as loud. If nothing is selected, the entire sound's volume is increased.

See Also

[Changing the Volume of Part of a Sound](#)

### Effects|Volume|Decrease (50%)

Decreases the volume of the selected part of the current sound, making it half as loud. If nothing is selected, the entire sound's volume is decreased.

See Also

[Changing the Volume of Part of a Sound](#)

### Effects|Volume|Change

Changes the volume of the selected part of the sound by a user-specified percentage. At present, the percentage is rounded to the nearest 50%.



See Also

[Changing the Volume of Part of a Sound](#)

**Effects|Playback rate**

Changes the playback rate of the current sound. The playback rate is specified in kilohertz (kHz). The higher the playback rate, the faster the sound is played.

See Also

[Speeding Up or Slowing Down a Sound](#)

[Playback Rate Dialog](#)

**Effects|Stretch/Shrink**

Physically changes the length of a sound. This allows a sound to be sped up or slowed down without changing its playback rate, or to be converted to a different playback rate.

## Options Menu Commands

### Options|Can modify unselected

If this menu item is checked then operations, such as copying and reversing, will be performed on the entire sound if nothing is selected. If this menu option is not checked, you have to select part of the sound before performing such an operation.

See Also

[Selecting Part of a Sound](#)

### Options|Save settings on exit

If this menu item is checked, the dimensions of the WHAM window and the vertical scale will be saved when WHAM exits.

**Note:** If you wish to save the settings immediately, hold down Shift and select **Exit** from the **File** menu.

### Options|Information defaults

Calls up a dialog that allows you to select whether WHAM reads the DOS creation date of files.

See Also

[Information Defaults Dialog](#)

### Options|Format defaults

Brings up the [Format defaults dialog](#), which allows you to set options specific to individual file formats.

### Options|Window options

Calls up a dialog that allows you to specify how the WHAM window can be resized.

### Options|Display options

Brings up the [Display options dialog](#), which allows you to configure the way in which WHAM presents a sound on the screen.

See Also

[Window Options Dialog](#)

## Recording a Sound

If you have a sound card that supports sound recording, you can use WHAM to record sounds.

### To record a sound

- 1 From the **File** menu, select **Record New**.



Or press the **Record** button.

The recording dialog will appear.

- 2 Press the button marked **Record** in the dialog. The dialog should display the message "Allocating memory" above the buttons. Please note that recording will not start immediately, as WHAM will attempt to allocate as much memory as it can.
- 3 When the line above the buttons reads "Recording commenced", WHAM will start recording sound. If you are recording through a tape or compact disc, press "Play" on the device; if you are recording through a microphone, speak (or sing, or yodel, or whatever ) into the microphone.
- 4 When you have recorded what you wish to record, press the button marked **Stop** in the dialog. If WHAM runs out of memory before you do so, it will stop automatically.
- 5 To listen to your sound, press **Play**. If you like it, press **OK**. This will close the dialog and allow you to edit your sound in WHAM. If you do not like it, you may attempt to record it again, or you can discard it and close the dialog by pressing **Cancel**.

See Also

[The Recording Dialog](#)

## Speeding Up or Slowing Down a Sound

You can change the speed at which the sound is played back. The speed is specified in samples per second, or hertz (Hz). The default speed is 22,050 Hz, or approximately 22 kilohertz (kHz). Windows can handle any speed between 4000 and 44,100 Hz.

### To change the playback speed of the current sound

- 1 From the **Effects** menu, select **Playback Rate**.
- 2 Enter the new speed in hertz, or select a standard speed from the drop-down list. To enter a rate in kilohertz, suffix it with the letter 'K'.
- 3 Click on OK, or press ENTER.

See Also

[Playback Rate Dialog](#)

## Editing Information about a Sound

Sounds stored in the RIFF Waveform and IFF formats can contain information about their contents. You can inspect this information, modify it or enter your own information.

### To view or edit the current sound's information

- 1 From the File menu, select Information.  
You will be presented with a dialog containing any information present in the current sound. Here you can enter your own information.

See Also

[File Information Dialog](#)

## Selecting Part of a Sound

You can select part of the current sound. Then you can play the selection, copy it to the Clipboard or modify it.

If you are not satisfied with how much you have selected, you can move the start and end of the selection.


### To select part of the current sound

- 1 Position the mouse cursor over the start of the part of the waveform that you wish to select.
- 2 Hold down the left mouse button and drag to the end of the part that you wish to select.
- 3 Release the left mouse button.

The selected part of the sound is displayed inversed.

### To change how much is selected

- 1 Position the mouse cursor over the marker beneath the start or end of the selected area.
- 2 Hold down the left mouse button and drag the marker to its new position.
- 3 Release the left mouse button.

**Hint:** To see whether you have selected the right part of the sound, press and hold down Ctrl and press P, or click on the 'Play selection' button. 

## Changing the Volume of Part of a Sound

You can increase or decrease the volume of the current sound, or of any part of it.

### To double the volume of part of a sound

- 1 Select the part of the sound whose volume you wish to double. This is not necessary if you wish to double the volume of the entire sound.
- 2 From the Effects menu, select Volume, and then select Increase (200%) from the menu that pops up.

**Note:** If part of a sound is already very loud, increasing its volume will distort it.

### To halve the volume of part of a sound

- 1 Select the part of the sound whose volume you wish to halve. This is not necessary if you wish to halve the volume of the entire sound.
- 2 From the **Effects** menu, select **Volume**, and then select **Decrease (50%)** from the menu that pops up.

### To change the volume of part of a sound by a percentage

- 1 Select the part of the sound whose volume you wish to change. This is not necessary if you wish to change the volume of the entire sound.
- 2 From the **Effects** menu, select **Volume**, and then select **Change...** from the menu that pops up.
- 3 Enter the percentage that you wish to change the volume by and click on OK or press Enter.

For example, 300% will treble the volume and 50% will halve it.

**Note:** If part of a sound is already very loud, increasing its volume will distort it.

## Clearing Part of a Sound

You can clear part of a sound. This erases that part of the sound, replacing it with silence.

### To clear part of a sound

- 1 Select the part of the sound that you wish to clear.
- 2 From the **Effects** menu, select **Clear**.



## Reversing Part of a Sound

You can reverse the order of part of a sound. This causes that part to be played backwards.

### To reverse part of a sound

- 1 Select the part that you wish to reverse. If you wish to reverse the entire sound, do not select anything.
- 2 From the **Effects** menu, select **Reverse**.

## Converting Amiga Sounds

You can convert signed sounds, such as Amiga sounds, to the unsigned format used by Windows. You can also convert sounds to signed format.

**To convert the current sound from signed to unsigned format (or vice versa)**

From the **Effects** menu, select **Change sign**.

## Saving Part of a Sound to Disk

You can select part of a sound and save it to disk as a separate sound.

### To save part of the current sound to disk

- 1 Select the part of the sound that you wish to save.
- 2 From the **Edit** menu, select **Copy to file**.
- 3 Enter the name for the new file in the dialog. You can also select the format (and in some cases the encoding) to save the sound in.

## Deleting Part of a Sound

You can delete part of a sound. That part is removed and the sound becomes shorter.

### To delete part of the current sound

- 1 Select the part of the sound that you wish to delete.
- 2 From the **Edit** menu, select **Delete**.

### To delete all but part of the current sound

- 1 Select the part of the sound that you wish to keep.
- 2 From the **Edit** menu, select **Delete unselected**.

## Inserting Sound from the Clipboard

You can append sound that is on the clipboard to the end of the current sound, or insert it into the current sound at any point. You can also replace the current sound, if any, with sound from the clipboard.

### To insert sound from the clipboard at the start of the current sound

- 1 From the **Edit** menu, select **Paste**.



or click on the Paste button.

- 2 In the dialog that appears, select the **Insert at start** option button and click on OK.

### To append sound from the clipboard to the end of the current sound

- 1 From the **Edit** menu, select **Paste**.



or click on the Paste button.

- 2 In the dialog that appears, select the **Add to end** option button and click on OK.

### To insert sound from the clipboard into the current sound

- 1 Select the part of the sound that you wish to replace with the sound in the clipboard.
- 2 From the **Edit** menu, select **Paste**.



or click on the Paste button.

- 3 In the dialog that appears, select the **Replace selection** option button and click on OK.

### To replace the current sound with the contents of the clipboard

- 1 From the **Edit** menu, select **Paste**.



or click on the Paste button.

- 2 In the dialog that appears, select the **Replace waveform** option button and click on OK.

## Copying Sound to the Clipboard

You can copy the current sound, or part of it, to the Clipboard. From there, it can be inserted into sounds in WHAM.

### To copy part of a sound to the clipboard

- 1 Select the part of the current sound that you wish to copy. If you wish to copy the entire sound, do not select anything.
- 2 From the **Edit** menu, select **Copy**.



or click on the Copy button.

### To copy part of a sound to the clipboard and delete it

- 1 Select the part of the current sound that you wish to copy. If you wish to copy the entire sound, do not select anything.
- 2 From the Edit menu, select Cut.



or click on the Cut button.

See Also

[Inserting Sound from the Clipboard](#)

## Saving a Sound to Disk

You can save the current sound to a file on disk. This file can be in one of several formats supported by WHAM.

### To save the current sound to disk

- 1 From the **File** menu, select **Save**.



or click on the Save button.

- 2 If the sound has not been given a name, WHAM will prompt you to enter a name for it. You can also select the format in which it is saved and, in some cases, the encoding.

### To save the current sound under a different name or in a different format

- 1 From the File menu, select Save As.
- 2 WHAM will prompt you for a name for the sound. You can also select the format and, in some cases, the encoding in which it is saved.

## Loading a Sound from Disk

You can load an existing sound file, such as one of the sounds provided with Windows, into WHAM.

### To load a sound file from disk

- 1 From the **File** menu, select **Open**.



or click on the Open button.

- 2 Select the file name from the list. You can change directories and drives through the dialog. You can also select the type of files that you wish to load.



## Playing a Sound

You can play the current sound, or a part of it, through your sound output device.

### **To play the current sound**

Press 'P',



or click on the 'Play' button.

### **To play part of the current sound**

Press and hold down Ctrl and press P,



or click on the 'Play selection' button.

## **File Information Dialog**

The File Information dialog contains a number of fields that may contain information about the current sound. This information may be stored in sound files.

### **Title**

This field contains the title of the current sound. You can give your sounds titles. This field can be stored in RIFF Waveform and IFF files.

### **Creation date**

This shows the date of creation for the current sound. This can be stored in RIFF Waveform files. If no date is stored in the current file, or it is not a RIFF Waveform file, WHAM can fill this field from the DOS creation date of the file.

### **Software**

This shows the software used to create or edit the current sound. This field exists in RIFF Waveform and IFF files.

### **RIFF Info >>**

Pressing this button expands the information dialog, revealing additional controls which allow you to edit other types of information. These are;

### **Item**

This is a list of items of information (such as artist name, comments, genre, etc.) which may be edited; all of these can be stored in a RIFF waveform file; some may also be stored in files of other formats. Any item which contains information will have a tick against its name.

### **Description**

This box contains a description of the purpose and suggested usage of the currently selected information item.

### **Value**

This field contains the information assigned to a particular item. You may edit the information in this field.

## Information Defaults Dialog

This dialog allows you to set options relating to the storage of user-defined information in sound files.

### **Get creation date from DOS**

If this is checked, WHAM will fill the Creation Date information field from a file's DOS creation date if no date is stored in the file. If this is unchecked, this field is left blank and filled with the current date when the file is saved.

## Window Options Dialog

This dialog allows you to customise the behaviour of the WHAM window.

### Vertical Sizing Mode

This specifies what, if any, vertical resizing is allowed. The options are;

- No vertical resizing** The window may be resized horizontally, but not vertically.
- Snap to scale** The window may be resized both horizontally and vertically. Upon resizing, it will shrink to the smallest size required to display sounds at the vertical scale to which it has been resized.
- Full resizing** The window may be resized both horizontally and vertically.

## **Playback Rate Dialog**

This dialog prompts you for the rate at which the sound is to be played back. Enter the rate in hertz, or alternatively, in kilohertz suffixed with the letter K. Thus, "22000" and "22K" are equivalent.

## The Recording Dialog

This dialog is used to record sound. It contains several buttons, which are:

### **Record**

This button starts the recording process (actually, you may have to wait a few seconds while WHAM gropes around for available memory before recording starts.)

### **Stop**

This button causes recording or playback to be stopped.

### **Play**

This button plays back the sound that has been recorded.

### **OK**

This button closes the recording dialog. If a sound has been recorded, it becomes the current sound and is displayed in the WHAM main window.

### **Cancel**

This button closes the recording dialog, discarding any sound that has been recorded.

### **Options>>**

This button extends the dialog, revealing additional controls which may be used to configure how sound is recorded. These are:

### **Sample rate**

This combo box may be used to select at what sample rate sound is recorded. The values it contains depend on the capabilities of your hardware.

### **Resolution**

This combo box may be used to select at what resolution sound is recorded. The values it contains depend on the capabilities of your hardware.

See Also

[Recording a Sound](#)

## The Format Defaults Dialog

This dialog allows you to configure the behaviour of WHAM's file format drivers. It contains a list of drivers which have configurable options. To set the options for a file format, select the format name in the list and press the **Options** button.

Currently, the following file formats shipped with WHAM allow options to be configured:

### **RIFF Waveform**

The RIFF waveform allows you to select whether information is written with the file. You may wish to disable this information to allow badly behaved applications to read .WAV files written with WHAM.

### **Amiga IFF (8SVX) sound**

The IFF driver contains a sophisticated information mapping mechanism; this allows you to choose which items of information are written to an IFF file and to what standard IFF information chunks they are mapped.

See Also

[Sound file formats](#)

## The System Information Dialog

This dialog contains information about your hardware and your system.

The system information dialog contains two areas; one area contains information about your sound input device and the other about your sound output device. If either device is not present, the relevant area will be greyed.

These areas contain the following fields:

### **Device name**

This field contains the name of the device, as defined in the device driver.

### **Number of channels**

This is the number of channels of simultaneous input or output that the device can handle at once. WHAM only ever uses one channel.

### **Maximum sample/playback rate**

This is the maximum rate at which sound can be recorded or played back through the device.

### **Maximum resolution**

This is the maximum resolution that the device can handle.

At the bottom of the dialog is a field labelled "free memory". It displays some ridiculously high figure, because Windows insists on counting available virtual memory. (The only way to determine how much RAM is actually available is to physically attempt to allocate blocks of various sizes, which is what the sound recording routine does.)



## The Display Options Dialog

This dialog allows you to configure the way in which WHAM presents the current sound on the screen.

### **(Mark ruler in) bytes**

If this radio button is checked, the ruler at the bottom of the WHAM window will be marked in bytes from the start of the sound.

### **(Mark ruler in) seconds**

If this radio button is checked, the ruler will be marked in seconds from the start of the sound.

### **(Ruler scale) Automatic**

If this radio button is checked, WHAM will automatically determine the scale of the ruler and the grid.

### **(Ruler scale) User-defined**

If this radio button is checked, the ruler scale will be a multiple of the number in the edit field to the right of this button.

### **(Grid) Vertical frequency**

This combo box allows you to select into how many sections the waveform is divided vertically. If you select 1, there will be no vertical grid.

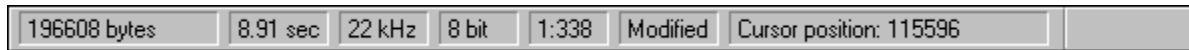
### **Grid color**

This button is filled with the colour currently used to draw the grid. If you press it, a dialog will appear allowing you to change the colour.

### **Draw horizontal grid**

If this checkbox is checked, WHAM imposes a horizontal grid on the waveform. This horizontal grid is drawn at (and between) ruler increments.

## The Status Line



The status line is the area at the bottom of the WHAM window. When a sound is loaded, it will display information in several compartments, as follows:

- 1] **Size of sound.** This is the physical size of the current sound in bytes.
- 2] **Length of sound.** This is the length of the current sound in seconds.
- 3] **Sample rate.** This is the rate at which the current sound is played back, in kilohertz.
- 4] **Resolution.** This is the resolution of the current sound, in bits per sample.
- 5] **Viewing scale.** This is the scale at which the current sound is shown.
- 6] **Modified flag.** If the current sound has been modified since it was last written to disk, the word "Modified" will be displayed here.
- 7] **Selection/cursor position.** If part of the current sound is selected, this will contain information about how much is selected and whence; otherwise it will contain the position of the cursor, as an offset from the start of the sound.

Finally, the rightmost portion of the status line will contain information about any operation in progress, such as "Playing"; normally it will be blank.

## The Button Bar



The button bar is near the top of the WHAM window. It contains buttons that cause certain functions to be performed when they are pressed. In addition, some buttons will show a menu of other buttons when clicked with the right mouse button.



### **Play**

This button causes the current sound to be played in its entirety.



### **Play from cursor**

This button causes the current sound to be played from the position of the cursor to the end. It is only present when nothing is selected.



### **Play selection**

This button causes the selected portion of the current sound to be played. It is only present if part of the sound is selected.



### **Stop**

This button causes playback to stop. It is enabled only if a sound is currently being played.



### **Record**

This button invokes the recording dialog, allowing you to record a sound through your sound card.



### **Open**

This button brings up a dialog prompting you to select a sound to load into memory.



### **Save**

This button causes the current sound to be saved to disk.



### **Save As**

This button is displayed when the Save button is pressed with the right mouse button. This button brings up a dialog, prompting you for a new name to save the current sound under.



### **Cut**

This button causes the current selection to be copied to the clipboard and removed.



### **Copy**

This button causes the current selection to be copied to the clipboard.



### **Paste**

This button causes the contents of the clipboard to be inserted into the current sound. If it is pressed with the left mouse button, a dialog is displayed, prompting you for the method of insertion. If pressed with the right mouse button, three buttons appear.



### **Paste at cursor/selection**

If this button is pressed, the contents of the clipboard will replace the currently selected portion of the current sound, if any part is selected, or else they will be inserted at the cursor position.



### **Paste at start**

If this button is pressed, the contents of the clipboard will be inserted at the start of the current sound.



### **Paste at end**

If this button is pressed, the contents of the clipboard will be appended at the end of the current sound.



### **Delete**

This button causes the current selection to be removed.



### **Zoom in**

If this button is pressed, WHAM will zoom in on the current selection.



### **Zoom out**

If this button is pressed, the entire sound will be displayed.



### **Actual size**

If this button is pressed, the current sound will be displayed at actual size.



### **Information**

If this button is pressed, you will be prompted with a dialog allowing you to see and change information about the current sound.



### **System information**

This button invokes the system information dialog which displays information about your hardware.

## Questions

**Q: Can WHAM record sound?**

**A:** Yes. Since the last version, I have acquired a sound card and have put in a sound recording option.

**Q: Can I transfer sound between WHAM and Sound Recorder?**

**A:** You can transfer sound from the Sound Recorder to WHAM, but not the other way. The Sound Recorder is an OLE application, and was not intended to transfer data by other means. Of course, you can save a sound in WHAM and open it in the Sound Recorder.

**Q: What do I do if a sound sounds noisy and distorted?**

**A:** If the sound sounds dirty and the waveform looks messy that the sound is probably in signed format (as used on the Amiga). Before playing it, convert it to unsigned format by selecting the **Effects|Change Sign** function.

If the sound sounds slightly distorted and the waveform display shows many curved (parabolic or hyperbolic) patterns, then the sound is probably in Mu-Law format. You can convert this to linear format by selecting **Effects|Decode Mu-Law data**.

**Q: <Insert name of program> cannot read .WAV files created by WHAM. Is this a bug in WHAM?**

**A:** No, WHAM implements the RIFF format as defined in the official Microsoft/IBM specification; it, however, is a bug in the other program. Some programs cannot handle RIFF waveform files containing anything but the sound and its header. If you wish WHAM to write RIFF files without additional information, select "Format defaults" from the Options menu, select the RIFF Waveform format and change its options to omit the INFO chunk from RIFF waveform files.

**Q: Can WHAM handle Macintosh sound formats?**

**A:** Unfortunately not. I would have liked to have put in SND resource read and write capabilities, but I can't find the Macintosh sound resource format. I have only seen programs that write this format on the Macintosh, and I have heard that these use some system functions.

If you wish to convert your favourite Windows sounds to Macintosh files, you must firstly save them to an intermediate format and use a Macintosh utility to do the conversion. To do this, I save files in IFF format and use a Macintosh program called *AmigaSndConvert* to convert them to Macintosh sound files.

## **Signed and Unsigned Samples**

There are two ways of storing digitised sound; with signed samples and unsigned samples. Signed samples are values ranging from -128 to 127 and centred around 0. Unsigned samples are centred around 128 and range from 0 to 255. Windows uses unsigned samples.

## **Sample**

Digitised sound consists of a series of samples. A sample is an individual reading of volume.



## **Marker** ▲

A marker is a small triangle, immediately below the waveform display, representing the start or end of a selection. By dragging a marker, you can change the selection.

## Sound File Formats

*Note: These are only the file formats which are shipped with WHAM. Other formats may become available separately.*

**RIFF Waveform** The Microsoft Windows 'WAVE' sound format. This format is used for Windows system sounds. RIFF Waveform files have the extension '.WAV'. RIFF Waveform sounds may be of either 8-bit or 16-bit resolution.

**Raw 8-bit sample** Sound files in this format consist of nothing more than the samples that they are comprised of.

**Creative Voice** This is the SoundBlaster sound format and has the extension, '.VOC'. WHAM can currently only deal with uncompressed .VOC files. The WHAM VOC format driver can only handle 8-bit VOC files.

**Amiga IFF** This is the standard Amiga 8-bit sound (8SVX) format. These files are often given the extension, '.IFF'. These files can contain eight-bit sounds only.

**Sun/NeXT sound** This is the standard sound format of the Sun and NeXT workstations, and traditionally have the extension, '.au'. These formats can contain either 8-bit or 16-bit linear or mu-law samples.

**AIFF** This format was developed by Apple and is also used by Silicon Graphics (SGI) workstations. The AIFF file structure is based on the Amiga IFF tagged file structure, although it is not the same as the IFF (8SVX) format. AIFF files may be of 8-bit or 16-bit resolution.

## Linear and Mu-law samples

Most sounds are stored using linear samples. Here, the amplitude readings are conventional, linear numbers.

Mu-law samples are another way of encoding sounds. In mu-law-encoded sounds, samples are logarithmic, rather than linear. This has the advantage of giving 14-bit resolution, while only taking up eight bits of space. Mu-law encoding is used mainly on workstations.

Most sound drivers for Microsoft Windows 3.1 do not directly support mu-law encoding, which is a shame. This means that sounds currently have to be converted to linear samples in order to be played from Windows. However, Microsoft have released an updated RIFF sound file specification, which includes support for mu-law encoding. I will add full mu-law support to WHAM as soon as I have a Windows sound driver (for the Gravis UltraSound) that complies with the updated specification.

## **Information**

User-defined information may be stored in RIFF Waveform and IFF sound files. This information included things such as the sound title, artist name and a copyright message.

## Cursor

The cursor is a flashing vertical bar that denotes a position in the sound. You can insert sounds from the clipboard at the cursor and play the portion of the current sound starting at the cursor.

## **Resolution**

The resolution of a sound is the size of its samples, in bits. At present., WHAM can handle two resolutions; 8 and 16 bit.

## Encoding

The term "encoding" refers to the way in which a sound is written to a file. Some file formats support several different encodings; for example, 16-bit sounds may be stored in Sun/NeXT audio files in either 16-bit linear or Mu-Law encoding.

## File format drivers

WHAM 1.3 uses external dynamic-link libraries (DLLs) to read and write sound files. Each format supported by WHAM has one such library, called a ***file format driver***. The use of these drivers makes it possible to add file formats without modifying the WHAM executable.