



## Help for The Missing Link

The Missing Link is designed for the user or Network Administrator that needs more than just a SLIST, but has more file servers in their internetwork than they can remember at one time! The Missing Link can instantly display a status (up or down) of a file server listing that has been previously configured.

The Missing Link is specially designed for Novell NetWare file servers, versions 2.15 to 3.11. The Missing Link retrieves the latest server information from the routing table of your default NetWare file server. No information is written or changed in your NetWare bindery, The Missing Link reads information in the bindery using dynamic link libraries that were written by Novell, Inc.

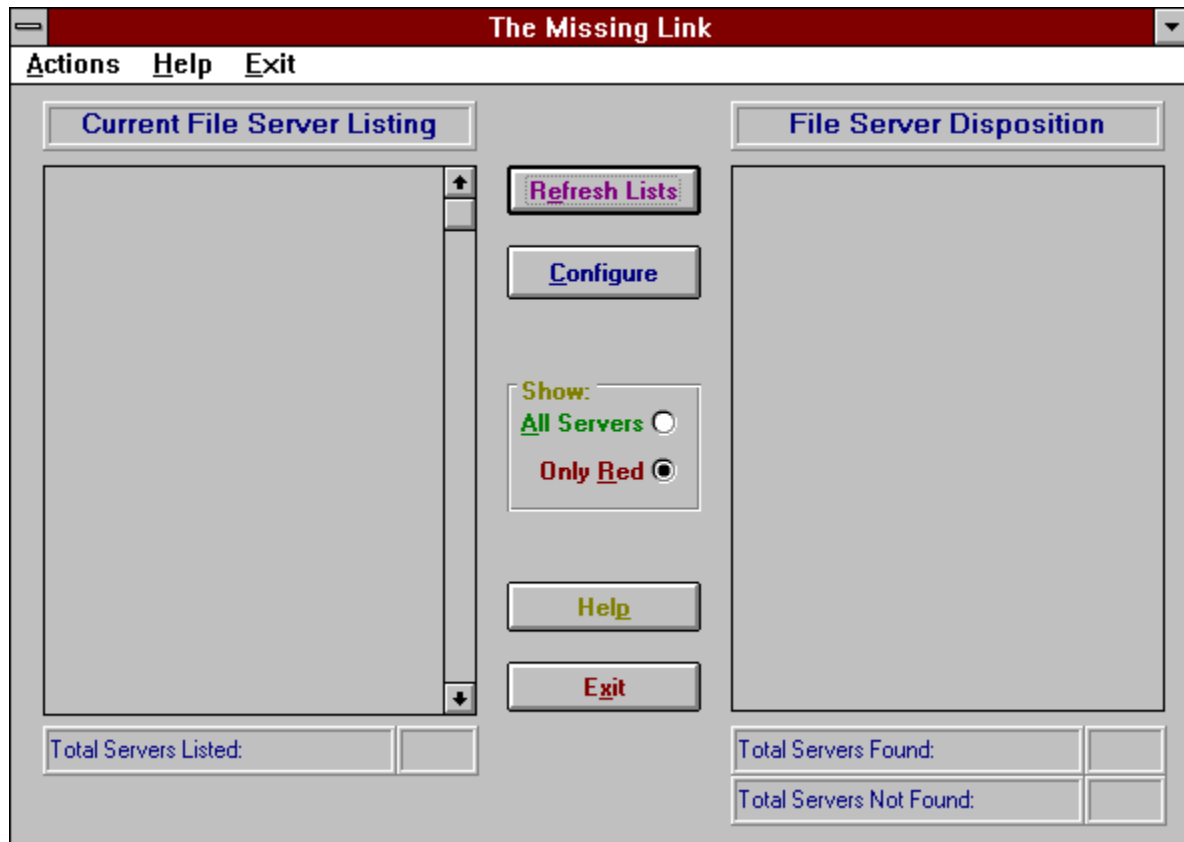
Running The Missing Link requires a file called VBRUN200.DLL, which can be found on CompuServe (GO IBMFF) or on many BBS's. If you need help locating a copy of VBRUN200.DLL, please contact me through CompuServe E-mail or send a postcard to my address.

To use The Missing Link, select the Configure button to add file servers to the check list. The Missing Link will save this list, and will attempt to locate these file servers each time the program is launched.

[The Missing Link Main Screen](#)  
[Checklist Configuration](#)  
[Shareware Information](#)  
[Planned Enhancements](#)

# The Missing Link Main Screen

The main screen provides a listing of every file server name on the internetwork, and also displays a listing of their current status. If a configured file server is not found, then the name of the file server is displayed with a DON'T WALK sign. This is especially helpful for the Network Administrator that needs to check many file servers every morning or evening.

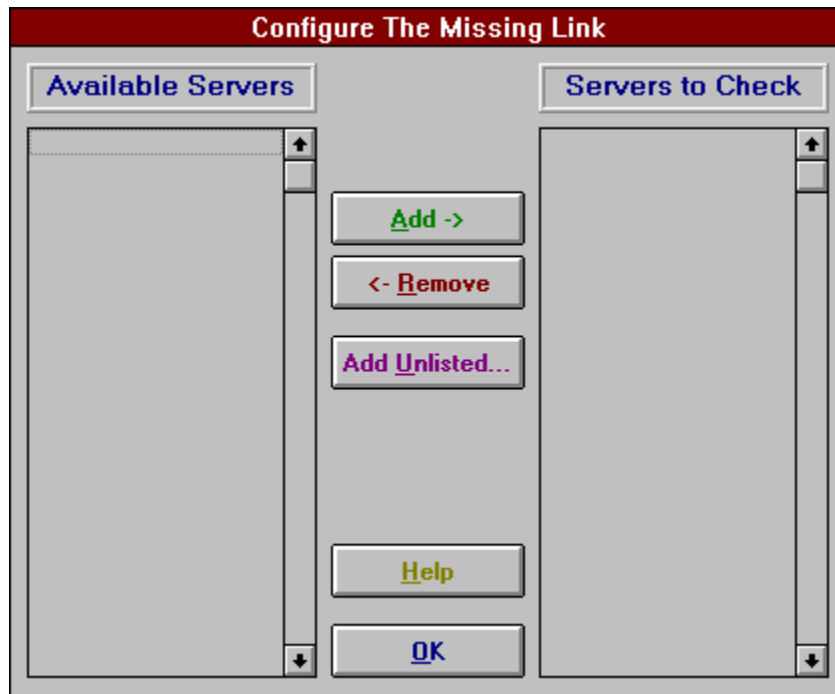


- The **Refresh** List button simply updates the available file server listing, and the file server disposition. Note that this file server listing and the disposition status is based on the NetWare routing table. If a file server is not found, do not automatically assume that the server is not working. It may be possible that the selected file server's physical or logical connection to your default file server is no longer operating properly.
- The **Configure** button loads the configuration screen that allows the addition and removal of file server names from The Missing Link's checklist.
- The **Show:** selection buttons allow the user to define the selection of file server dispositions that are displayed. Choosing 'All Servers' shows both server selections - available and not available. Choosing 'Only Red' displays only those file servers that are not found by your default server's routing table.
- The **Help** button provides this on-line documentation.

- Use the **Exit** button to close The Missing Link.

# Checklist Configuration

The Checklist Configuration screen allows for the adding and removing of default file server names to always be checked when the Check Servers button is pressed on the File Server List screen.



- The **Add** button moves a server name from the pool of server names into the checklist names. Select a server name on the left, click Add, and the server name is moved into the checklist. Use combinations of the Windows default selection keys (Ctrl and/or Shift) to select more than one server name at a time.
- The **Remove** button removes a server name from the checklist. Select a checklist name on the left, click Remove, and the server name is moved back into the pool of available server names.
- The **Add Unlisted...** button is used for adding the name of a file server that is currently not found in the list of available servers. The server name must be typed exactly as it would normally appear on the server list.
- Pressing **OK** updates all lists and returns the main display.

## Shareware Information

The Missing Link is NOT public domain or free software, but is being distributed as 'Shareware'.

Your copy of The Missing Link is authorized to you for an evaluation period of 14 days. After this trial period, you should register your copy or discontinue using the product.

**Registered users will receive a registration number which will disable the registration notice window.**

Individual licenses of The Missing Link are \$10.

To register The Missing Link, send your license fee to:

**James Messer  
1385 West 78th Avenue  
Hialeah, FL 33014**

The license fee is payable by Check or Money Order.

Please make all checks payable to James Messer.

The Missing Link may also be registered through CompuServe (GO SWREG).

## **Planned Enhancements**

Future enhancements include support for Novell NetWare v4.0 file servers and support for an alarm function to detect when a file server name disappears from the routing table (NetWare SEND message, digital pager, alphanumeric pager, etc). If you have any suggestions for future versions of The Missing Link, please drop me a message on CompuServe at 70711, 2337.

As a Network Administrator, I have found this utility to be extremely helpful, if only for quickly seeing how things look across the internetwork. Future versions will continue this type of reporting, including a NetWare bindery reporting tool and some administrative functions.

