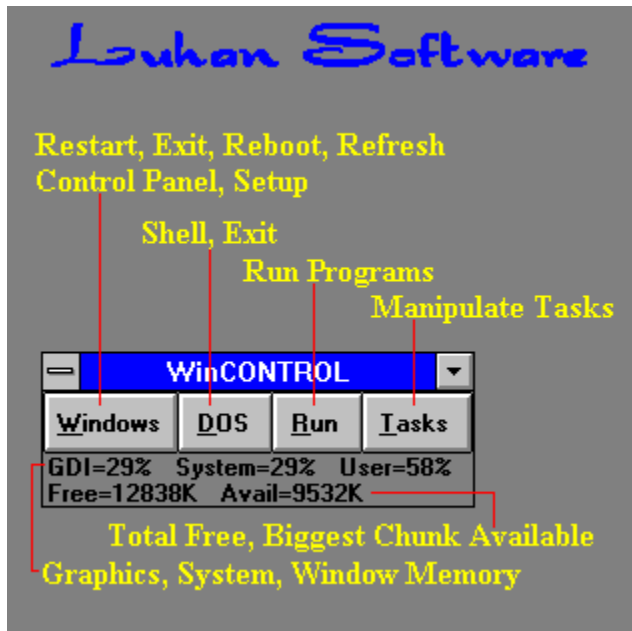


WinCONTROL V1.20 Help Release January 1, 1994



Commands

Windows

DOS

Run

Tasks

Memory Watch

Options

Keyboard Shortcuts

Registration

Support

about Luhan Software

about Shareware

Coming in Version 2.0

Other Products

Windows



By pressing the Windows button you can have access to the following things:

Restart Windows

This will end your current Windows session, then it will start a new Windows session.

Exit Windows

This will end your current Windows session. It is the same action that the Windows Program Manager takes when you select 'Exit Windows' from the file menu.

Reboot System

This will end your current Windows session, then it will reboot your system.

File Manager

This is a fast way to access the Windows File Manager.

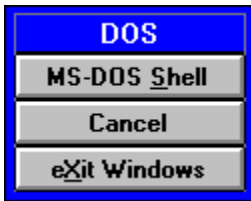
Control Panel

This is a fast way to access the Windows Control Panel.

Setup

This is a fast way to access the Windows Setup application.

DOS



By pressing the DOS button you have access to the following things:

MS-DOS Shell

This button will run a DOS shell. The first time you use this feature you will be prompted for the location of the PIF file for the DOS shell. Thereafter it will just run it.

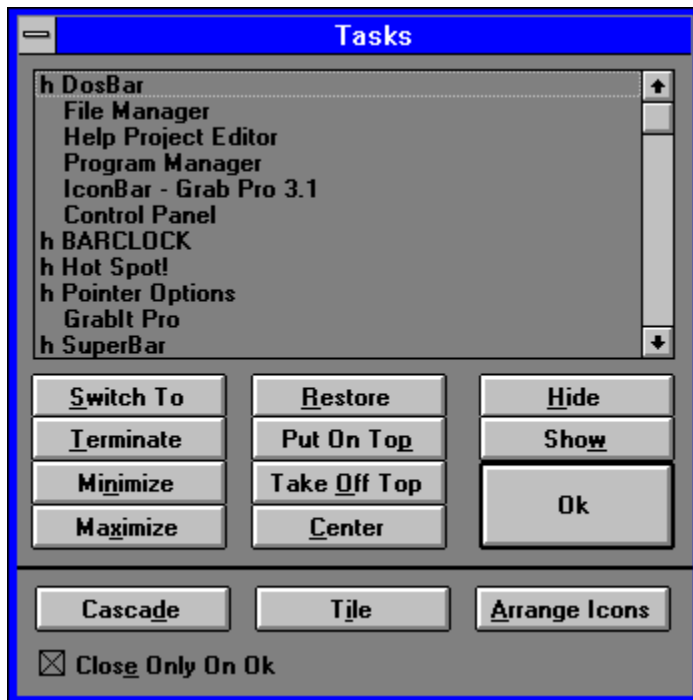
Exit Windows

This will end your current Windows session. This button is also under the Windows button. It was also placed here due to the fact that users preferred/wanted this option here. The logic was that if you choose the DOS button, you want to go out to DOS versus choosing the Windows button and exiting Windows to DOS. Either way you can't go wrong when you want to get to DOS in a hurry.

Run

This button will let you run a Windows program, DOS program, DOS batch file, or PIF file.

Tasks



By pressing the Tasks button you have access to the following things:

Listbox

This listbox contains the list of all the currently executing applications. Entries prefixed with 'h' means they are hidden applications.

Switch To

This button allows you to switch to the application selected in the listbox.

Terminate

This button allows you to stop the application selected in the list box from further execution.

Minimize

This button allows you to minimize the application selected in the list box to an icon.

Maximize

This button allows you maximize the application selected in the list box to

use the full screen.

Restore

This button will restore the application selected in the listbox to the position it was before it was either minimized or maximized. This is needed if you minimize or maximize an application that will not let you, then you need to restore it.

Put On Top

This button will make the application selected in the list box the application that is on top of all other applications even if it is not the active application.

Take Off Top

This button will make the application selected in the list box that is on top of all other applications no longer able to stay on top of all other applications.

Center

This button will center the application selected in the list box on the screen. This comes is handy when you switch video modes and some of your applications are displayed outside the new screen coordinates. Select a task, then press the "center" button to bring it to the center of the screen. Now you can reposition it to where you like. Center will not work on iconized applications. You must restore them to normal size to use center.

Hide

This button will hide the application selected in the list box from view.

Show

This button will unhide (show) the hidden application selected in the list box.

Cascade

This button will cascade all the open applications that you have on your desktop.

Tile

This button will tile all the open applications that you have on your desktop.

Arrange Icons

This button will arrange applications that are icons on the Windows desktop.

Close Only On OK

This option allows the dialog box to stay open, if it is selected, so you can manipulate other tasks if you need to.

Memory Watch

```
GDI=54% System=54% User=55%  
Free=12965K Avail=9712K
```

Watching Windows memory consists of the following things:

GDI

This represents the percentage of free memory that Windows has for drawing any and all graphics to the screen. This includes device-context handles, brushes, pens, regions, fonts, and bitmaps.

System

This represents the percentage of free memory that Windows has for system resources.

User

This represents the percentage of free memory that Windows has for user resources, which includes window and menu handles.

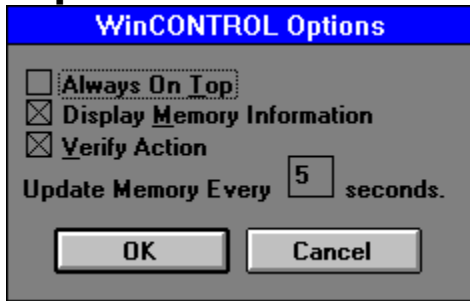
Free

This represents the number of kilobytes (x1024) of free memory that an application has to work with.

Avail

This represents the number of kilobytes (x1024) of the biggest block of free memory that an application can allocate to work with.

Options



WinCONTROL's options can be accessed from the control menu under "Options" and has the following options:

Always On Top

Makes WinCONTROL's window the window that is on top of all other applications even if it is not the active application.

Display Memory Information

If this option is selected, WinCONTROL will watch Windows memory, otherwise it will not.

Verify Action

If this option is selected, then whenever you want to execute a critical step, you will be prompted. For example, if you chose the Windows button, then the Exit Windows button, you would be prompted to verify that you wanted to exit Windows. If it is not chosen, then you will not be prompted for verification.

Update Memory Every XX seconds

Lets you choose how long, in seconds, that Windows memory information is updated.

Registration

WinCONTROL is cheap. You can choose from the following two options:

Option 1

Send **\$15** US dollars for registration. You will be informed about all updates and new products.

Option 2

Send **\$25** US dollars for registration and a registered copy of the next version when it becomes available. This is a 50% savings as version 2.00 will cost \$20 US dollars. You will be informed about all new updates and new products.

International Customers

For customers who do not live in the United States of America, please do me the favor of drawing your check or money order on a US bank.

Site Licenses

For companies or users wishing to purchase a site license, please write to me for a price quote. Tell me how many copies you wish to purchase and I will call you back with the price.

For information on Luhan Software, please read the section entitled "[Luhan Software](#)". For information on features to be put into the next version, please read the section entitled "[Coming in Version 2.00](#)".

Support

Support for WinCONTROL and all my products consists of email, snail mail, and telephone. Send your questions, comments, etc. to me and I will write back or call me and leave a message. Send to anyone of the following:

"Email"

Internet : LUHAN@MERLIN.NMHU.EDU

CompuServe : 72643,1743

"Snail Mail"

WinCONTROL Questions

Luhan Software

Post Office Box 2572

Las Vegas, New Mexico 87701-2572 USA

"Telephone"

(505) 425-1096

I would prefer that only registered users contact me through the telephone, but if you have a legitimate question and have thoroughly read through this help file or have a bug report please call.

Bug fixes will be posted as necessary. Internet users can find my software by anonymous ftp at this location:

"ftp.cica.indiana.edu" or "129.79.20.27" in "pub/pc/win3/utills" or
at any ftp site that mirrors CICA.

CompuServe users can find it in:

Windows Shareware Forum (WINSHARE)

Library 6 (General Win Utils)

or you can search for the keyword LUHAN.

BBS users can find it at America's biggest BBS - EXEC-PC - in the Windows file section. Below is a list of phone numbers for EXEC-PC.

(414 area code)

Phone Number Modem type and brand

789-4210	Regular 2400 baud modems
789-4337	9600bps older style US Robotics HST (2400 baud MNP owners should call the above number) (2400 baud V.42bis owners should call the above number)
789-4352	14,400 US Robotics HST only, no V.32 on these.
789-4360	14,400 V.32bis/V.42bis USR Sporster or Courier
789-4390	14,400 V.32bis/V.42bis (Twincom modems here. Try this if you have connect problems.)
789-4421	14,400 v.32bis/v.42bis (Zyxel U-1496b modems here. Try this if you have connect problems.)
789-4450	CompuCom Speedmodems only, 9600 bps
789-4315	Hayes V-series 9600B only.
789-4500	V.FAST, using Hayes V.FC modems at this time

about Luhan Software

Luhan Software is my tiny software company and I am Patrick Lujan. I develop Shareware MS-DOS and Microsoft Windows applications. My company mission is to provide computer users with great software that won't put a hole in your wallet when you purchase it. In the coming months you will see new applications for both MS-DOS and Windows, so keep a look out where you got WinCONTROL for my new applications. All of my software is provided to computer users around the world through the Shareware concept. In short I will provide complete, unrestricted use of all my software for your use. You may use it free of charge for a period of 14 days. After this time, if you are still using it, please send the registration fee. Please don't abuse the Shareware concept by not honoring my request for payment if you like and continue to use WinCONTROL. This method of software sales maximizes your investment by purchasing only software relevant to your needs and it keeps my costs down so I can afford to sell for cheaper.

Luhan Software is truly customer driven because if you don't like my software when you test it and don't register, I don't get paid for the work I did. I develop all of my software for my own personal use before I even think of selling it, therefore you can rest assured that I don't develop software simply to try to get your money. I use my software everyday and until I think that others would benefit from my software, it won't go out the door with my name on it.

Luhan Software is dedicated to help stop the proliferation of the needless waste of our global resource paper. My products will rarely, if ever, come with paper documentation. I will rely on educating you to my software by means of very well documented Help files. If you must have paper documentation, I will provide it for you at a cost, but you will never see one of my packages delivered with paper documentation.

I want to thank you for trying out WinCONTROL. I hope you like it enough to use it and to register with me. If I have the misfortune to not satisfy you with WinCONTROL, please keep an eye out for my other products.

Thank You and Happy Computing!

about Shareware

Shareware distribution gives users a chance to try software before buying it. If you try a Shareware program and continue using it, you are expected to register. Individual programs differ on details -- some request registration while others require it, some specify a maximum trial period. With registration, you get anything from the simple right to continue using the software to an updated program with printed manual.

Copyright laws apply to both Shareware and commercial software, and the copyright holder retains all rights, with a few specific exceptions as stated below. Shareware authors are accomplished programmers, just like commercial authors, and the programs are of comparable quality. (In both cases, there are good programs and bad ones!) The main difference is in the method of distribution. The author specifically grants the right to copy and distribute the software, either to all and sundry or to a specific group. For example, some authors require written permission before a commercial disk vendor may copy their Shareware.

Shareware is a distribution method, not a type of software. You should find software that suits your needs and pocketbook, whether it's commercial or Shareware. The Shareware system makes fitting your needs easier, because you can try before you buy. And because the overhead is low, prices are low also. Shareware has the ultimate money-back guarantee -- if you don't use the product, you don't pay for it.

DISCLAIMER - AGREEMENT

Users of WinCONTROL must accept this disclaimer of warranty:

"WinCONTROL is supplied as is. The author disclaims all warranties, expressed or implied, including, without limitation, the warranties of merchantability and of fitness for any purpose. The author assumes no liability for damages, direct or consequential, which may result from the use of WinCONTROL."

WinCONTROL is a "shareware program" and is provided at no charge to the user for evaluation. Feel free to share it with your friends, but please do not give it away altered or as part of another system. The essence of "user-supported" software is to provide personal computer users with quality software without high prices, and yet to provide incentive for programmers to continue to develop new products. If you find this program useful and find that you are using WinCONTROL and continue to use WinCONTROL after a reasonable trial period, you must register (see "Registration" for more information). Registration gives you a license for one copy for use on any one computer at any one time. You must treat this software just like a book. An example is that this software may be used by any number of people and may be freely moved from one computer location to another, so long as there is no possibility of it being used at one location

while it's being used at another. Just as a book cannot be read by two different persons at the same time.

Commercial users of WinCONTROL must register and pay for their copies of WinCONTROL within 21 days of first use or their license is withdrawn. Site-License arrangements may be made by contacting Luhan Software.

Anyone distributing WinCONTROL for any kind of remuneration must first contact Luhan Software at the address below for authorization. This authorization will be automatically granted to distributors, and such distributors may begin offering WinCONTROL immediately (However Luhan Software must still be advised so that the distributor can be kept up-to-date with the latest version of WinCONTROL).

You are encouraged to pass a copy of WinCONTROL along to your friends for evaluation. Please encourage them to register their copy if they find that they can use it.

Coming in Version 2.00

These are just some of the features scheduled to be put into version 2.0:

Control Panel Plus

Control Panel Plus is a way to access the most used portions of the Windows Control Panel plus some features of Windows that you don't have access to. Among them are changing Icon fonts, Icon Vertical Spacing, Windows Help colors, plus more.

Improved Task Manager

Among the improvements to the Task Manager are manipulating multiple tasks, getting task information, and getting window information.

New Interface

A new user interface, unique to Luhan Software products will make its debut.

Customer Suggestions

My customers have suggested features to make WinCONTROL more powerful and I have taken the best ideas and they will be in there too.

Register NOW

Registered users will typically have the next version 1 to 2 months before it is released as shareware. There are also benefits not yet implemented that all customers will have when they come on-line. Do yourself a favor, register today and join our family of computer users.

Keyboard Shortcuts

Ctrl+A	About WinCONTROL
Ctrl+O	Change Options in WinCONTROL
Ctrl+P	How to Register WinCONTROL
F1	Help
Ctrl+X	Exit Windows - No Verification
Ctrl+R	Restart - NoVerification
Ctrl+C	Control Panel
Ctrl+S	Setup
Ctrl+F	File Manager
Ctrl+D	DOS Shell
Ctrl+E	Run App

Other Products

At the moment there are no other products out on shareware, but here is a list of the products under development:

MS-DOS Power Tools

A collection of utilities that either replace or supplement MS-DOS utilities and commands. A sampling of the tools included are :

A DIR replacement that allows you to intuitively handle directory listings. A few of its features are file type color coding, full, short, and custom listings; and scrolling.

COPY, DELETE, MOVE and MD replacements that allow multiple files to be handled on the command line.

A CD replacement that allows changing to drives and directories (i.e. "cd d:\tools\luhan") plus has a window where most used directories can be stored. Access is fast with this.

An EDIT replacement that works with multiple files plus has a calculator, ascii chart, and color chart.

A MORE replacement that works in a more usable manner.

An RD replacement that allows removing directory trees.

PathAdd to append paths to your PATH statement.

Rendir to rename directories.

IconBar

A Windows utility that allows you to have the most commonly used program icons available quickly. Features include Groups, Groups within Groups, Drag and Drop Client/Server, Icon Teams, execute applications by dropping files onto icons, and can replace the Windows Program Manager. It will also be able to import the Program Manager's information. This one is hot and should be out real soon.

ED

A replacement for Windows NotePad. Among its many features are handling multiple files, using fonts, tabs, has word wrap, is a drag and drop client, and more. Also available soon.

Include \$3 when registering WinCONTROL and I'll send you a disk with these products when they are finally available. You will get a certificate worth \$3 on a purchase of any of my software.

