



# WinBoot™ 1.1

Copyright 1993,1994 by GS Solutions All Rights Reserved



**WinBoot™ (Windows Rebooting Program) is an easy to use tool that allows you to create multiple Autoexec & Config files using a unique editing screen, and Save them to easy to use setup buttons. To become a registered user, please see "[Registration Information](#)".**

**Important: Changing Autoexec and Config files should only be done by someone who understands the importance of this files.**

**Read this entire help file before proceeding to use WinBoot.**

## **Procedures**

[Creating a Setup](#)

[Viewing a Setup](#)

[Rebooting](#)

## **Windows**

[System Settings](#)

[Setup Buttons](#)

[Configure Setups](#)

[Boot Settings](#)

## **Menus**

[Configure Menu Commands](#)

[Help Menu Commands](#)

[File Menu Commands](#)

[Edit Menu Commands](#)

## **Registration**

[Registration Information](#)

[Shareware Agreement](#)

[Limited Use](#)

[Contacting the Author](#)

[Disclaimer](#)

[Copyright](#)

[The Shareware Concept](#)

WinBoot is a Trademark of GS Solutions

# WinBoot™ 1.1 Registration Form/Invoice

## Ordering by check:

Ordering by check: Mail this order form and the check or money order to GS Solutions, P.O. Box 762, Soquel, CA. 95073--762. To print this order form click the print button.  
We prefer payments made in US dollars drawn on a US bank.

## Credit card ordering:

Credit Card Ordering is still not available. Sorry.

## Ordering with CompuServe's Software Registration Service:

Enter GO SWREG at the ! prompt and request product registration ID = 1245.

## Site licenses:

A site license for WinBoot entitles an organization to receive one copy of the distribution package and duplicate the distribution disk for the specified number of copies.

## Benefits of registration:

No more nag message, Free technical support and reduced prices for upgrades.

## Invoice:

Please check one: 5.25" Disk \_\_\_\_ 3.5" Disk \_\_\_\_ Either size \_\_\_\_

WinBoot Single Copy \_\_\_\_ copies at \$19 each = \_\_\_\_

WinBoot Site License

2 to 9 computers: \_\_\_\_ computers at \$16 each = \_\_\_\_

10 to 24 computers: \_\_\_\_ computers at \$13 each = \_\_\_\_

25 to 49 computers: \_\_\_\_ computers at \$10 each = \_\_\_\_

50 to 99 computers: \_\_\_\_ computers at \$7 each = \_\_\_\_

100 to 199 computers: \_\_\_\_ computers at \$4 each = \_\_\_\_

Over 199 copies are negotiable.

CA Residents add local sales tax (7%-8.25%) + \_\_\_\_

Total payment \_\_\_\_

Name: \_\_\_\_\_ Date: \_\_\_\_\_

Company: \_\_\_\_\_

Address: \_\_\_\_\_

City, State, Zip: \_\_\_\_\_

Country: \_\_\_\_\_

Day Phone: \_\_\_\_\_ Eve: \_\_\_\_\_

Electronic Mail address: \_\_\_\_\_

How did you hear about WinBoot ? \_\_\_\_\_

Comments:

# Creating a Setup

You start to create a setup by clicking on one of the unconfigured [Setup Buttons](#) in the [WinBoot](#) main floating window. This will take you in the [Configure Setups](#) window. You can now start writing the new Config and Autoexec files in their respective editing windows. That's the hard way and, I, for one, never did it.

The easy way is to Load an existing Config file by pressing on one of the 9 [Get Config From](#) buttons in the top left of your [Configure Setups](#) window, or on the [Get Current Config](#) button in the center. You do the same thing for the Autoexec file; using one of the 9 [Get Config From](#) buttons on the right or the center button. Please take note that you can mix and match the Config file associated with one button and the Autoexec file associated with another button.

Once you have the 2 files in the editing windows you make the changes you need, be careful. When you are done with the changes you press the [Save Setup](#) button or the Save to option from the [File pull-down menu](#). You will be requested to give a name to the new setup in the Setup Name window. Be sure to use a meaningful name up to 14 characters. By pressing OK you are done and you will notice that the [Setup Button](#) that you saved to has a new name.

[Setup Buttons](#)  
[Configure Setups](#)  
[Boot Settings](#)

[Contents](#)

# Viewing a Setup

When you press on one of the [Setup Buttons](#) that are already configured (have a name), the [Boot Settings](#) window will appear on your screen. Press on the [Setup](#) button in the [Boot Settings](#) Window and you will be taken to the [Configure Setups](#) window. There you can view the Config and Autoexec files associated with that [Setup Button](#). Use the scroll bars if you need, or take advantage of the [Config/Autoexec Separator](#) in the center of the window.

You can also edit the Autoexec and Config files on the screen if you find it necessary. If you made changes save them. You can exit by closing the window.

[Setup Buttons](#)

[Configure Setups](#)

[Boot Settings](#)

[Contents](#)

# Rebooting

## **Warning**

**Do make a bootable Floppy with a copy of your Config.sys and Autoexec.bat files before rebooting with Winboot for the first time. An ounce of prevention...**

To reboot press on one of the [Setup Buttons](#) that you have configured. This will pop-up the [Boot Settings](#) window. You have 2 ways to reboot now.

**A.** Press the [Copy files and reboot](#) button in the [Boot Settings](#) window. This will start a count-down (if you're not using Smartdrive disk catching). After the countdown, or immediately (if you are using Smartdrive), the computer will reboot and come up with the new configuration.

Using method **A** will change your Config.sys And Autoexec.bat files. You will need to use [WinBoot](#) again to return to the previous configuration.

**B.** Especially if you forgot to make a copy of your Config.sys and Autoexec.bat files ! Next mark the checkbox [Change back to Previous](#). Then press the [Copy files and reboot](#) button. This will instruct Winboot to reboot with the new configuration **ONCE** and restore the Config.sys and Autoexec.bat files to their previous status with just a Ctrl-Alt-Del or Reset. This is the safe way to go because you know you can just reboot and bring everything back to normal if you made a mistake.

[Setup Buttons](#)

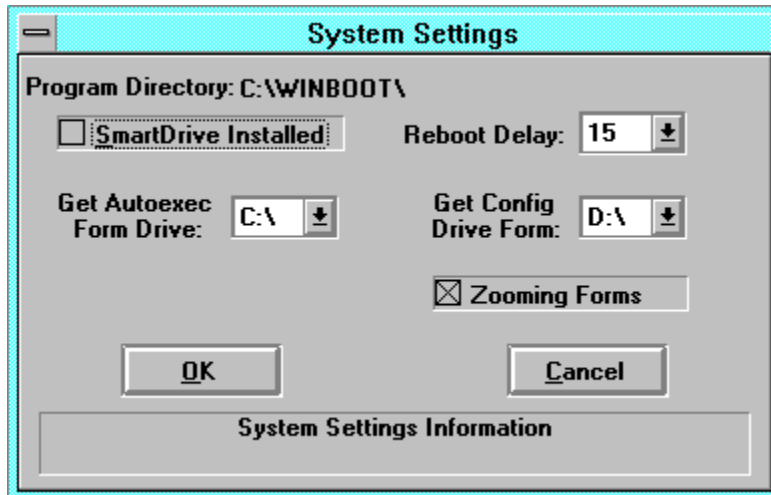
[Configure Setups](#)

[Boot Settings](#)

[Contents](#)

# System Settings

This is your [WinBoot](#) System Settings Option Window.



*You will find a detailed explanations for each component of this window by pointing to your interest.*

[Contents](#)



Test

**Program Directory**

The Program Directory displays the current directory you executed WinBoot.EXE from.

### **Smartdrive Installed**

If you use the Smartdrive disk caching program then check the Smartdrive Installed checkbox. The Reboot delay option will disappear. If you use any other disk caching program, like Hyperdisk, then do not check the Smartdrive checkbox. The reboot Delay option will be displayed and activated. **Caution:** If you check this and do not have Smartdrive the new Autoexec.bat and Config.sys may not get written, or just get partially written (corrupted) We recommend that you start with a long Reboot Delay and see when the disk activity had stopped. If disk activity stopped early in the count-down you may be able to reduce the Reboot Delay. For example, if disk activity stopped after 5 seconds you could safely reduce the Reboot Delay to 8 seconds.

## **Reboot Delay**

The reboot delay lets your disk catching program catch-up, and write changes to the disk. You can set this delay 5 to 30 seconds. If WinBoot seems to be unable to boot with the new configuration then you need to increase the Reboot Delay. **Caution:** If this is set too low the new Autoexec.bat and Config.sys may not get written, or just get partially written (corrupted) We recommend that you start with a long Reboot Delay and see when the disk activity had stopped. If disk activity stopped early in the count-down you may be able to reduce the Reboot Delay. For example, if disk activity stopped after 5 seconds you could safely reduce the Reboot Delay to 8 seconds.

***Zooming Forms***

Check this option if you want some special effects

**Get Autoexec From Drive**

You can specify the drive the program will get for the Initial Autoexec file. Only hard disk drives located on your system are accepted. For example you will not be able to specify a network drive. Such restriction avoids any possibility of unintended changes on a remote computer made by mistake.

**Get Config From Drive**

You can specify the drive the program will get for the Initial Config file. Only hard disk drives located on your system are accepted. For example you will not be able to specify a network drive. Such restriction avoids any possibility of unintended changes on a remote computer made by mistake.

**OK Button**

As you would otherwise expect, pressing the OK button will save the new setting and exit .



**Cancel Button**

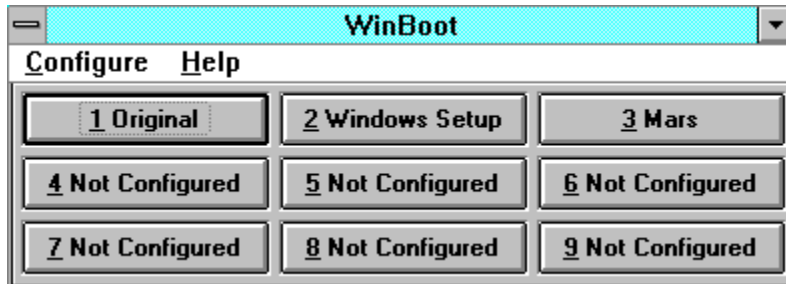
The Cancel button will exit without saving any changes.

### **System Settings Help**

The bottom area of your System Settings window will offer you specific help for the area where your pointer is placed. Move your pointer around to see a brief explanation for each area or option.

# Setup Buttons

This is your [WinBoot](#) Setup Buttons Window.



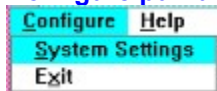
This is the heart of the [WinBoot™](#) program. Nine different groups of Config-Autoexec files easy to access by simply pressing on the Reboot Configuration you want..

***You will find a detailed explanations for each component of this window by pointing to your interest.***

[Contents](#)

Test

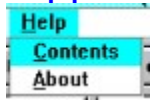
### Configure pull-down



First option [System Settings](#) will bring you to the System Settings Option Window.

Second option **Exit** will exit WinBoot. If you try to exit before saving changes you made, a warning message box will give you the option to save your work.

## Help pull-down



First option [Contents](#) will opens this help file to the Content section  
Second option [About](#) will bring you to the [Winboot](#) About window

**Setup Buttons**

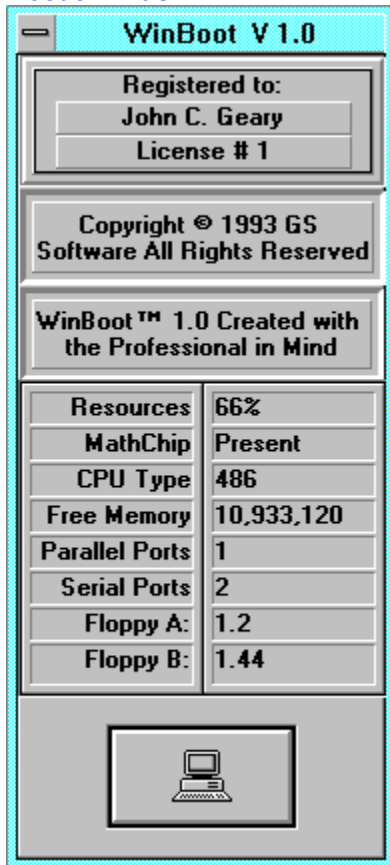
Pressing on "Not Configured" buttons

Will take you straight into the [Configure Setups](#) window

Pressing on "Configured" Buttons.

Will take you into the [Boot Settings](#) floating window.

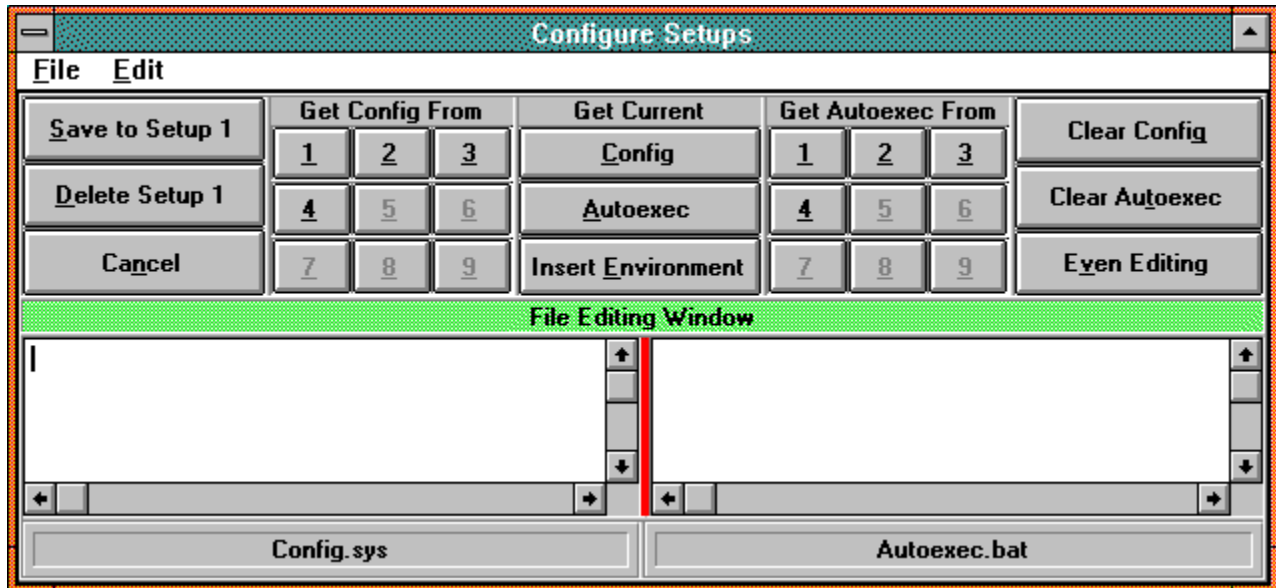
*About Window*





# Configure Setups

This is your [WinBoot](#) Configure Setups Window.

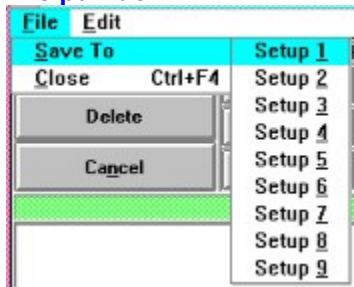


This is the place where you create and/or edit the Config-Autoexec files associated with a button. There are many features that will make your task easier.

*You will find a detailed explanations for each component of this window by pointing to your interest.*

[Contents](#)

## File pull-down



First option **Save to** will let you pick the button that will store the Config and Autoexec files when you are done editing. Before actually saving, WinBoot will look at the files and will refuse to save if any of the two files is empty. This will reduce the possibility that you mistakenly overwrite a file.

### Setup Name

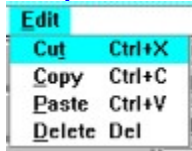
When ready to save, you will be asked for a setup name. Try to make-up a meaningful description. The description can be maximum 14 characters long.

Second option **Close** will exit the Configure Setups window. If you try to close before saving changes you made, a warning message box will give you the option to save your work.

### Save to setup # Button

This is a shortcut to saving. You can only save to the setup that you called initially. To save to another setup you must use the File pull down menu.

## Edit pull-down



Standard Windows Cut - Copy - Paste - Delete Clipboard Commands are supported and hotkeys.

**Save Setup**

This is a shortcut to saving. You can only save to the setup that you called initially. To save to another setup you must use the [File pull-down menu](#).

**Delete Setup**

A setup that already has some information can be deleted using this button. You would use this button to start fresh again. If there is no information in the current setup, then the button is not available and is grayed out.

**Cancel Setup**

Lets you cancel the editing you are doing. If there is unsaved information you will receive a warning message.

**Get Config From**

By pressing one of the 9 buttons in this area, you instruct WinBoot to copy the Config file associated with that setup into the Config.sys editing window. You would use this feature when you want to start with an existing Config file and make some changes.

**Get Current Config**

By pressing on the Get Current Config button you will load the current Config.sys file from the boot drive you specified in the [System Settings](#) into the Config editing window.



**Get Current Autoexec**

By pressing on the Get Current Autoexec button you will load the current Autoexec.bat file from the boot drive you specified in the [System Settings](#) into the Autoexec editing window.

**Insert Environment**

Will look-up the current environment (path, DOS prompt, etc..) and insert it in the Autoexec file. You can use this button to make sure that the new setup you are creating will have the same familiar look and feel you are used to.

**Get Autoexec From**

By pressing one of the 9 buttons in this area, you instruct WinBoot to copy the Autoexec file associated with that setup into the Autoexec.bat editing window. You would use this feature when you want to start with an existing Autoexec file and make some changes

**Clear Config**

You use this button to quickly clear-up the Config.sys editing window. If you have done some editing in that window then you will be warned and given the choice to go back.

**Clear Autoexec**

You use this button to quickly clear-up the Autoexec.bat editing window. If you have done some editing in that window then you will be warned and given the choice to go back.

**Even Editing**

By pressing on this button you make the Config and Autoexec.editing windows equal. You use this button after you made one of the editing windows bigger by dragging the separation bar.

### **Configure Setups Help**

Watch this line for a concise description of the area where your mouse is pointing.

**Config Editing Window**

This is the place where you read and edit your Config.sys file associated with a button. You can place your mouse on the line separating the Config and Autoexec editing windows and drag to resize both windows at the same time.



**Autoexec Editing Window**

This is the place where you read and edit your Autoexec file associated with a button. You can place your mouse on the line separating the Config and Autoexec editing windows and drag to resize both windows at the same time.

**Config/Autoexec Separator**

Drag to resize both windows at the same time.

## **Config Template**

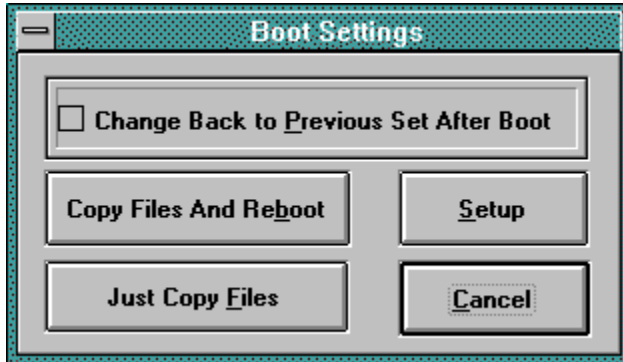
This shows you the current 'Get From' templete you are using for your Config file.

### **Autoexec Template**

This shows you the current 'Get From' templete you are using for your Autoexec file.

# Boot Settings

This is your [WinBoot](#) Boot Settings Window.



*You will find a detailed explanations for each component of this window by pointing to your interest.*

[Contents](#)

Test

### **Change back to Previous**

The top checkbox line, Change back to Previous will instruct your WinBoot program to restore the current Config and Autoexec files after rebooting.

For Example:

You are usually running your computer on the office network but, right now, you need to use a network unfriendly program like..!@#\$%^.. You have button 7 set exactly the way you need, without the network, but you need to make sure that later on you can return to your normal configuration with a simple reboot. This is achieved by an X in the Change back to Previous checkbox.

### **Copy Files and Reboot**

Will copy the Config-Autoexec files associated with the [Setup Button](#) you pressed as the Config.sys and Autoexec.bat files on the boot drive. A short delay (if you use a disk caching program other than smartdrive), ***and your computer will reboot.***



**Just copy Files**

Will only copy the Config-Autoexec files associated with the [Setup Button](#) you pressed as the Config.sys and Autoexec.bat files on the boot drive, ***without rebooting***. You could use this button to prepare for another program that affects your Config.sys and Autoexec.bat..

**Setup**

Will take you to the [Configure Setups](#) window. You use this button to make changes on the Config-Autoexec files associated with a button that has been previously configured.

**Cancel**

Will just make the Boot Settings window disappear.

# Shareware Agreement

You are hereby licensed to: Use this software for a 30 day evaluation period; make as many copies of this software and documentation as you wish; give exact copies of the original to anyone; and distribute the software and documentation in its unmodified form via electronic means. There is no charge for any of the above.

You are specifically prohibited from charging, or requesting donations, for any such copies, however made; and from distributing the software and/or documentation with other products (commercial or otherwise) without prior written permission.

[Contents](#)

# Limited Use

This product is Shareware and its continued development can only be supported by YOU! This license allows you to use this software for evaluation purposes without charge for a period of 30 days. If you use this software after the 30 day evaluation period a registration fee is required. One registered copy of WinBoot may be used by a single person who uses the software on one or more computers or to a single workstation used by multiple people.

If you continue to use this product after a reasonable trial period then please register it.

## **The Benefits**

The Nag messages will be removed immediately upon registration  
You will be advised of updates and other products available

## **The Cost**

US\$19.00

Payable by Check or Money Order.

## **Contents**

# Contacting the Author

By eMail @ Compuserv 72623,3712

By Snail Mail @ GS Solutions, P.O. Box 762, Soquel, CA. 95073--762.

[Contents](#)

# Disclaimer

This product is provided "as is" without representation of warranty, either expressed or implied.

The entire risk as to the use of this product is assumed by the user. In no event will GS Solutions or their estate be liable for any damages direct, indirect, incidental or consequential resulting from any defect in the product.

If you do not accept these terms you must cease using this product forthwith and destroy the program, the documentation and all copies thereof.

**[Contents](#)**

# Copyright

These programs and the related documentation are copyright. The owner is John Geary. All rights reserved. You may not use, copy, modify, or transfer the programs, documentation, or any copy except as expressly provided in the shareware agreement.

© GS Solutions 1993/1994.

**[Contents](#)**



# The Shareware Concept

Shareware is copyrighted software that is distributed by authors through bulletin boards, on-line services and disk vendors.

Shareware allows you to try the software for a reasonable limited period. If you decide not to continue using it, you throw it away and forget about it. You only pay for it if you continue to use it. Shareware is a distribution method, not a type of software. You benefit because you get to use the software to determine whether it meets your needs, before you pay for it.

The shareware system and the continued availability of quality shareware products depend on your willingness to register and pay for the shareware you use. It's the registration fees you pay which allow authors to support and continue to develop our products. Please show your support for shareware by registering those programs you actually use.

[Contents](#)

WinBoot is a Trademark of GS Solutions

