



121 SOFTWARE

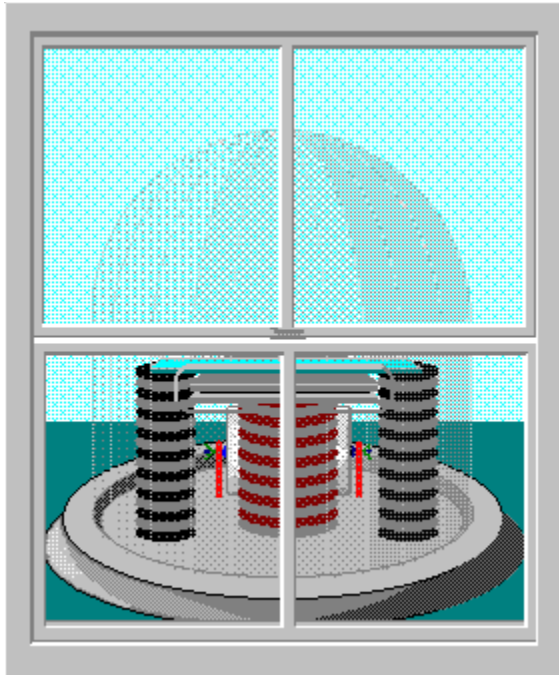


Table of Contents

[Overview](#)

[Installing Ticker](#)

[Ticker Tape Display](#)

[Command Line Options](#)

[Getting Started](#)

[Ticker.Ini File Registration Options](#)

[Window Contexts](#)

[Troubleshooting](#)

[How to Register Ticker](#)

Overview

If you are like me, you are likely to have five or more applications active on the Windows screen at any given time. The more you use Windows, the more you come to realize that screen space is a precious resource.

At the same time your applications are vying for various system resources, it's important for you to keep an eye on resource availability. There are several utility programs accessible through Shareware and commercial distribution that can help you manage in the multitasking Windows environment. They all share a common handicap - they have a large screen footprint or provide limited information.

As I began to design Ticker, I thought about the effectiveness of existing information displays. I settled on the stock market ticker machine as being the most efficient information provider. The scrolling single line display can be found in various forms from the Goodyear blimp to grocery store displays. Ticker Tape is designed to furnish the maximum information in a minimum screen footprint. The design strategy is to incorporate animation in the display of information.

No matter how much information you need to manage, Ticker can provide it through animation in the same size footprint. Ticker will always keep your information visible and up to date. Ticker provides several display position alternatives with multiple modes of animation. Much time was spent constructing custom controls for an intuitive user interface. And, to aid you in learning about Ticker in a hands on environment, I developed a graphical context sensitive help system. From within the Help system, you can walk through the actual windows and menus of Ticker and obtain context sensitive help on each graphical control and menu item. When using Ticker, you can always activate specific help for the window you are using by clicking on the HELP button in the window control panel. Once activated, a captured screen image of the window allows you to graphically select help specific to each control and menu item. There is also a broad topic search capability.

I invite you to explore Ticker and its help system during your 30-day Shareware evaluation period. I recommend that you now view: [Getting Started](#) and [Ticker Tape Display](#)

Thank you for evaluating Ticker.

Getting Started

Ticker is ready to go after installation, however, you will probably want to choose options and preferences specific to you. To do so, I suggest that you follow this short sequence:

- 1) Familiarize yourself with the display options (see [Options Menu](#) and its submenus) and set those which are appropriate.
- 2) Choose the location and display mode for the Ticker Tape (see [Preferences Menu](#)).
- 3) Choose the speed of the Ticker Tape display (see [121 Ticker](#)).
- 4) Use the [Display Menu](#) to select the Ticker Tape messages to display.
- 5) Click the Go button on the toolbar of the [121 Ticker](#).

That's all there is to it, but you may want to view [Ticker Tape display](#) if you haven't done so already.

NOTE: The Copyright and Registration Reminder windows displayed at startup can be disabled by placing "no_notices" on the Ticker command line (see [Command Line Options](#)).

Ticker Tape Display

Like the stock market ticker machine from which Ticker derives its name, information is presented in a constantly changing single line of text, referred to as the Ticker Tape. You select the information to be displayed on the Ticker Tape, how the information is displayed, where the Ticker Tape is located on your screen, and the Ticker Tape speed. Once you find the combination of settings that are right for you, you can set Ticker in your Windows Startup Group and forget it. Ticker will provide the information you want in the minimum screen footprint.

Normally the Ticker Tape is positioned in the title area of a window already present on your screen. As your work takes you from application to application, the position of the Ticker Tape automatically moves from window to window. This assures clear view of your information even on a crowded screen. If you prefer, you can select a stationary window such as Windows Program Manager to host the Ticker Tape. You may find it best to place the Ticker Tape at stationary location on the screen. An ideal location is at the bottom of the screen. Since the height of the Ticker Tape is 18 screen pixels for small system fonts and 26 pixels for large system fonts it fits nicely below the iconized programs on the Windows desktop. To select the position of the Ticker Tape, use the [Ticker Tape Position](#) SubMenu from the Preferences Menu of the Ticker main window.

In the Ticker Tape scroll mode, the information you select is concatenated and scrolled along the Ticker Tape as you might see from the traditional stock market ticker machine. The Scroll Mode has the maximum amount of information on the screen at any given time. In addition to the Scroll Mode, the Ticker Tape display has three other animated modes. A Slide Mode glides each message across the ticker tape with a momentary pause at the left side for viewing. The Cycle Mode displays each message in succession centered in the ticker tape. The Cycle Mode delivers the most information in the least time. Freeze Mode pauses the ticker tape motion on the current message and continues to update the information in the message. The Cycle Mode provides the maximum focus on a selected message. To select the display mode of the Ticker Tape, use the [Ticker Tape Mode](#) SubMenu from the Preferences Menu of the Ticker main window.

There are three types of information presented on the ticker tape: System data, Alarms, and Reminders. System configuration, date and time, task list, hard drive, memory, resource data, and more comprise the system data information. Alarms include hard drive, memory, resource and time events which you select. Reminders are messages which you identify to be displayed at specified dates and/or times.

Ticker offers you options for formatting your messages. You can select full and abbreviated message formats. As you become familiar with each message type, you may wish to use to select the abbreviated format and get more information in less screen space. Ticker always starts each message with an icon indicating the type of message. You can also select date and time formats to suit your taste. Several message types are alarm messages. Ticker allows you to specify whether the alarm messages will be accompanied with a ringing bell. To select the message options, use the [Ticker Tape Options](#) window from the Preferences Menu of the Ticker main window.

Since all of the Ticker Tape display modes involve some form of animation, Ticker provides a way for you to adjust the animation speed. A speed range of 1 to 100 can be selected right from the Ticker Main window. An edit box and a graphical point and click horizontal speed bar provide speed selection (see [121 Ticker](#)).

You can start the Ticker Tape once you have selected the information you want displayed, the display position and display mode, and display speed (see [Getting Started](#)). The Ticker Tape can be started and stopped from the Toolbar on the Ticker main window or from the File Menu of the Ticker main window (see [121 Ticker](#)). Once you have the Ticker Tape running, you will want to free up precious screen space by removing the Ticker main window from the screen. Ticker affords two ways to accomplish this task. You can iconize Ticker in the usual Windows manner or you can hide the main window using either the Toolbar on the Ticker main window or the File Menu of the Ticker main window (see [121 Ticker](#)). **To make the hidden main window visible, just hold down the CONTROL key and point and click anywhere on the Ticker Tape.**

One last point about the Ticker Tape display. If you choose either the Focus Window or Selected Window position, the Ticker Tape will occupy the entire title area of the host window making moving the host window impossible using the Windows drag and drop. To facilitate this frequently needed operation, Ticker will temporarily jump off of the host window and assume a position at the bottom of the screen when the left mouse button is pressed anywhere on the Ticker Tape. With the Ticker Tape temporarily relocated, the host window can be moved in the usual manner.

Command Line Options

Ticker supports four Command Line Options:

- 1) no_notices,
- 2) vertical_retrace_wait,
- 2) no_compatibility, and
- 3) reset.

No_notices directs Ticker to suppress the initial [Copyright Window](#) and the [Registration Reminder Window](#). This is useful when you want to automatically execute Ticker at startup via the Windows Startup Group.

The vertical_retrace_wait option may be helpful for some system configurations which exhibit screen flicker when Ticker is scrolling the Ticker Tape. The vertical_retrace_wait option does not work for all configurations and may cause a General Protection (GP) Fault for some. If your configuration exhibits screen flicker and you want to try the vertical_retrace_wait option be sure to close all of your open files first. I would appreciate knowing about configurations where the vertical_retrace_wait option produces a GP Fault.

Specifying no_compatibility in the command line will cause Ticker to bypass the System Compatibility Test. Ticker performs a compatibility test each time it is executed. There is some chance that even though your system fails the test, Ticker will run normally. In that case, using no_compatibility will allow Ticker to run.

Use reset if you want to force Ticker to bypass the data saved in the ticker.dat file and instead use the default program data. Reset is most useful when the Ticker Environment File (TICKER.DAT) has become corrupt or if Ticker and the ticker tape are not visible when activated.

Ticker.Ini File

Ticker supports four keyword registration items via the Ticker.Ini file. All four keywords are contained in a Registration Group (i.e., [Registration]). The four keywords are:

- 1) Status,
- 2) InstallationDate,
- 3) InstallerName, and
- 4) Password.

The Status keyword can have the following values:

- 1) Uninstalled,
- 2) Shareware, and
- 3) Registered.

When you receive Ticker, the Status keyword appears as - Status=Uninstalled. After you install Ticker, the Status keyword is updated (by Ticker) to Status=Shareware. When you register Ticker with 121 Software, **you will change** the Status keyword to Status=Registered.

The InstallationDate keyword is set by Ticker when it is installed. **You will not need to change this setting.**

The InstallerName keyword will need to be set by you. You should use your name for this keyword (i.e., InstallerName=Linda Lubbers). You can use 50 or fewer characters for the keyword value. When you register Ticker with 121 Software, you will specify the InstallerName value in order to receive a password. The name you specify and the password provided by 121 Software must be set in the Ticker.Ini file. The InstallerName keyword is displayed by Ticker in the [About Window](#) and the [Copyright Window](#).

The Password keyword value must be obtained from 121 Software when you register Ticker. The Password value is based upon the InstallerName keyword value. You will need to update the Ticker.Ini file at that time.

Window Contexts

Below are the windows accessible from Ticker. By clicking on one of them you can view the context sensitive help specific to that window. The material is presented in a graphical manner with an actual screen image of the window. To receive help on individual menus and controls, just click on the entity for which you want information. A pop-up window will supply the related data.

[121 Ticker](#)

[About](#)

[Copyright](#)

[Date Assist](#)

[Drive Options](#)

[Drive Space Alarms](#)

[Ticker Tape Options](#)

[Memory Alarm](#)

[Registration Reminder](#)

[Reminder View](#)

[Reminders](#)

[Resource Alarms](#)

[Select Ticker Tape Window](#)

[Set Fixed Ticker Tape](#)

[Time Alarm View](#)

[Time Alarms](#)

[Time Assist](#)

Troubleshooting

Ticker and the Ticker Tape are not Visible When Activated - There is a possibility that the ticker.dat file has become corrupt. To correct the problem, restart Windows to kill the invisible instance of Ticker. Then reactivate Ticker with the reset [Command Option](#). This will cause Ticker to bypass the ticker.dat file. Once activated, choose the Save Environment On Exit Menu Item from the [File Menu](#) and exit Ticker.

The Ticker Tape Does Not Always Appear in Focus Window Display - Sometimes in Windows there is no window which has input focus. This usually occurs when you close (destroy) the window with input focus. Until you click on another window, Ticker will not be able to find the focus window. In this situation, there can be one of two results: 1) the ticker tape will disappear, or 2) the ticker tape will continue to operate seemingly suspended in the position once occupied by the closed focus window. In either case the solution is simple - just click on or create the next window you want to use. When the new window receives focus, Ticker will position the ticker tape in its title area.

Sometimes Ticker Does Not Save The Window Positions - Ticker updates the window positions after the window is closed, so you should click the Save Window Position Now Menu Item in the [File Menu](#) after you close the window. Using the Save Environment On Exit Menu Item in the [File Menu](#) will assure that the positions of all windows are saved when you exit.

The Ticker Tape Does Not Fill the Title Bar On Your Windows - Ticker does not support multiple height system fonts available on many high resolution graphic cards.

The Ticker Main Window Always Hides Itself - The hide feature of the Ticker main window must be manually reset if you want to turn the feature off. This feature is programmed that way to allow for fully automatic operation from your Startup Group. Use the Hide Menu Item in the [File Menu](#) to manually turn the hide feature off.

The Bell Rings When Using Ticker - Ticker will ring the system bell whenever there is a problem. Usually the problem is associated with data entry. If you are entering data when the bell sounds, check to see that the data you are entering is valid. You can use Ticker help to determine the acceptable data limits. Ticker will ring the bell continuously if the Ticker Tape position is off of the screen. This may happen if the title area of the selected host window (see [Select Ticker Tape Window](#) and the Focus Window Menu Item in the [Ticker Position Menu](#)) is moved off screen. Ticker may also ring the system bell when it has run out of memory or encountered a system or programming problem. If you suspect that Ticker has detected a problem of this sort, please contact me using one of the methods found in the [About Window](#).

The Bell Rings Continuously - Ticker will ring the bell continuously if the target position for the Ticker Tape is off of the screen. This can easily happen if a window that is partially off screen receives input focus when the Ticker Tape is set in Focus Window Mode. To correct the problem bring the target window within the boundaries of your screen.

How to Install Ticker

[Packing List](#)

[SystemRequirements](#)

[Installation Procedure](#)

[Known Problems](#)

[Errata](#)

Packing List

Ticker is distributed in one archive file (TICK10.ZIP). TICK10.ZIP contains the Ticker executable and all of the files required to run Ticker. TICKER.HLP, INSTALL.HLP and REGISTER.HLP are extensive context sensitive graphic help files. These Help Files not required in order to execute and evaluate Ticker. However, Ticker contains several custom graphical controls that are documented only in the Ticker Help File (TICKER.HLP).

The Packing List for the archive file is shown below:

TICK10.ZIP - Program Files

- FILE_ID.DIZ
Ticker Program Description (ASP DIZ Format).
- INSTALL.HLP
Ticker Installation Instructions (Windows Help Format).
- README.1ST
Ticker README File (ASCII TXT Format).
- REGISTER.HLP
Ticker Registration Instructions (Windows Help Format).
- TICKER.EXE
Ticker Executable (Windows EXE Format).
- TICKER.HLP
Ticker help file (Windows Help Format).
- TICKER.DAT
Ticker Environment File (Internal Format).
- TICKER.FON
Ticker Font File (Windows FON Format).
- TICKER.INI
Ticker Initialization File (Windows INI Format).

System Requirements

Ticker contains a liberal amount of custom graphics and graphical animation that impose performance requirements on your system. In addition, Ticker makes certain assumptions about Windows configuration in order to provide message information. Each time that Ticker is executed, it verifies that your system configuration is compatible. Compatibility issues are listed below:

- 1) Ticker requires a 386 or higher CPU.
- 2) A graphics display capable of raster operations.
- 3) Windows 3.1 or later.
- 4) Windows must be running in enhanced mode.
- 5) Windows must be using paged memory.

If you're not sure if your system is compatible with the requirements above, Ticker will tell you when it is executed. There is some chance that even though your system fails the compatibility test, Ticker will run normally. Ticker provides a command line parameter which allows you to bypass the compatibility test and allow Ticker to run (see [no_compatibility](#)).

Installation Procedure

Ticker is distributed in one archive file (TICK10.ZIP). TICK10.ZIP contains the Ticker executable and all of the files required to run Ticker. TICKER.HLP, INSTALL.HLP and REGISTER.HLP are extensive context sensitive graphic help files. These Help Files not required in order to execute and evaluate Ticker. However, Ticker contains several custom graphical controls that are documented only in the Ticker Help File (TICKER.HLP).

You should make copies of the archive file so that you can give a copy of Ticker to friends or upload them to your favorite bulletin boards. **Never upload archive files that you have compressed yourself.**

The Installation Procedure is provided below for the (TICK10.ZIP) archive file.

To install the Ticker Program Files from TICK10.ZIP:

- 1) Using PKUNZIP.EXE from PKWARE or the unzipping program of your choice, extract the Ticker Program Files from the archive file TICK10.ZIP in the drive and directory of your choice. See the [Packing List](#) for a list of the distribution files.
- 2) Install the Ticker Fonts into the Windows system. If you are not familiar with installing fonts, just follow the steps in [Installing Ticker Fonts](#).
- 3) Edit the InstallerName keyword in the TICKER.INI file to include your name. For an example see [Updating InstallerName in TICKER.INI](#).
- 4) Now you can double click on the Ticker executable (TICKER.EXE) from the File Manager or create a Program Manager entry and double click on the Ticker Icon. If you are not familiar with creating a Program Manager entry, just follow the simple steps in [Creating a Ticker Program Manager Entry](#).
- 7) **Installation of Ticker is now complete.**

If you encounter any problems during the Ticker installation procedure, contact me via one of the methods available from the README.1ST file.

Known Problems

This is the first release of Ticker and as such it has not had the advantage of being executed on a wide variety of systems and configurations. The author would appreciate the reporting of any problems that you encounter. This current list of known problems is shown below:

- 1) When changing from a high resolution (800X600, 1024x768, etc.) display mode back to standard VGA (640x480) display mode after saving Tickers window positions, Ticker will ring the bell continuously if it is outside of the VGA display area. The work around is simply to move all of Tickers windows within the VGA display area before switching back to VGA mode. You can also use the Restore Default Settings Menu Item from the File Menu, but make sure that you can afford to forfeit your other settings.

Errata

None to report.

Installing Ticker Fonts

To install the Ticker fonts into the Windows system:

- 1) Open the Windows Control Panel.
- 2) Double click on the Fonts Icon.
- 3) Click on the Add Pushbutton (on the right of the Fonts dialog box). An Add Fonts dialog box will open.
- 4) Select the drive where you placed the Ticker distribution files using the Drives combo box.
- 5) Select the directory where you placed the Ticker distribution files using the Directories list box.
- 6) You will see "TickerFonts" in the List of Fonts list box. Select that entry by clicking on it.
- 7) I recommend that you deselect the Copy Fonts to Windows Directory checkbox at the bottom of the dialog box.
- 8) Now click the OK pushbutton. The Fonts dialog box will close.
- 9) You will now see the Ticker Fonts in the list of installed fonts in the Installed Fonts list box.
- 10) Click the CLOSE pushbutton and the font installation is complete.

Creating a Ticker Program Manager Entry

To create a Ticker Program Manager Entry in the Windows system:

- 1) Click on the Program Manager Group where you want Ticker to be placed.
- 2) Click the Program Manager Files Menu and then the New menu item. The New Program Object dialog box will open.
- 3) Click on the Program Item radio button and then click the OK pushbutton. The Program Item Properties dialog box will open.
- 4) Enter Ticker Tape in the Description edit box.
- 5) Enter the full path for TICKER.EXE (**including the file name**) in the Command Line edit box.
- 6) Enter the full path for TICKER.EXE (**without the file name**) in the Working Directory edit box.
- 7) Click the OK pushbutton and the Program Manager entry is complete.

Updating InstallerName in TICKER.INI

The lines below can be found in TICKER.INI. The InstallerName keyword is the fourth line down. Initially the keyword is empty (i.e., InstallerName=). You supply your own name by using any text editor (e.g., NOTEPAD). The name you enter can be 50 characters in length. See the example below:

```
[Registration]
Status=Uninstalled
InstallationDate=
InstallerName=Linda Lubbers
Password=
```

How to Register Ticker

[Ticker Registration Cost](#)

[What You Receive When Registering Ticker](#)

[Ticker Source Code Cost \(For registered users only\)](#)

[What You Receive When Ordering the Source Code](#)

[Methods of Payment](#)

Methods of Payment

Method of payment is the principal difference between the three ways of registering Ticker:

- 1) cash, check and money order payments - order from [121 Software](#),
- 2) major credit cards (MC, Visa, Amex, or Discover) - order from [Public \(software\) Library Order Service](#) and
- 3) bill your CompuServe account - order from [CompuServe Shareware Registration Service](#).

All orders for the Ticker source code must be made directly to 121 Software. Payment must be in cash, check or money order.

Whichever method you choose to register Ticker, please remember that support for Ticker must be requested directly from 121 Software.

Ticker Registration Cost

The cost to register Ticker on a single computer is \$25 (US) plus shipping and handling of \$4 (US) for US and Canadian orders and \$6 (US) for all other destinations.

Texas residents must add 8.25% for sales tax.

What You Receive When Registering Ticker

- 1) You will receive a password from 121 Software that instantly registers your Shareware copy of Ticker.
- 2) You will also receive via the mail a disk containing the latest version of Ticker and Ticker help.
- 3) You will be entitled to unlimited phone and E-Mail support directly from 121 Software.
- 4) You will be entitled to Ticker upgrades until the next major release. They can be obtained via download from Ticker's Home Bulletin Board, CompuServe or America Online. They can also be acquired via the mail from 121 Software for a shipping and handling fee of \$4 (US) for US and Canadian orders and \$6 (US) for all other destinations.

Do not request support from the Public (software) Library or CompuServe.

Ordering Through 121 Software

CASH, CHECK OR MONEY ORDERS ONLY

Orders may be placed through 121 Software by mail, phone, and E-Mail.

Walter F. Schoellmann
121 Software
P.O. Box 420504
Houston, TX 77242-0504

(713) 787-0308
CompuServe 71054,1130
America Online WOLFS

Ordering through the Public (software) Library Order Service

CREDIT CARD ORDERS ONLY

Order Ticker Tape by item/product #11161.

You can order with MC, Visa, Amex, or Discover from Public (software) Library by calling 8002424PsL or 7135246394 or by FAX to 713-524-6398 or by CIS Email to 71355,470. You can also mail credit card orders to PsL at P.O.Box 35705, Houston, TX 77235-5705.

PsL can take orders via their 800 number, non-800 number, CIS number, and FAX number. Their operators are available from 7:00 a.m. to 7:00 p.m. CST Monday-Friday and normally from 7:00 a.m. to 4:00 p.m. on weekends. The easiest and most direct way to register Ticker is through CompuServe - via Email. FAX and credit cards are the primary means of registration for overseas customers.

THE ABOVE PsL NUMBERS ARE FOR ORDERS ONLY.

To insure that you get the latest version, PsL will notify 121 Software the day of your order and I will ship the product directly to you.

Any questions about the status of the shipment of the order, refunds, registration options, product details, technical support, volume discounts, dealer pricing, site licenses, etc., must be directed to: [121 Software](#).

Ordering Through the CompuServe Shareware Registration Service

CHARGE TO YOUR COMPUSERVE ACCOUNT ONLY

To register Ticker from CompuServe enter GO SWREG and follow the instructions contained in "Instructions to Register Software". Select Ticker by its REGISTRATION ID (1897) or by the AUTHOR'S COMPUSERVE ID (71054,1130).

Ticker Source Code Cost (For registered users only)

The cost for the Ticker source code is \$25 (US) plus shipping and handling of \$4 (US) for US and Canadian orders and \$6 (US) for all other orders.

Texas residents must add 8.25% for sales tax.

What You Receive When Ordering the Source Code

The source code for Ticker is available only for educative or non commercial uses to registered Ticker users.

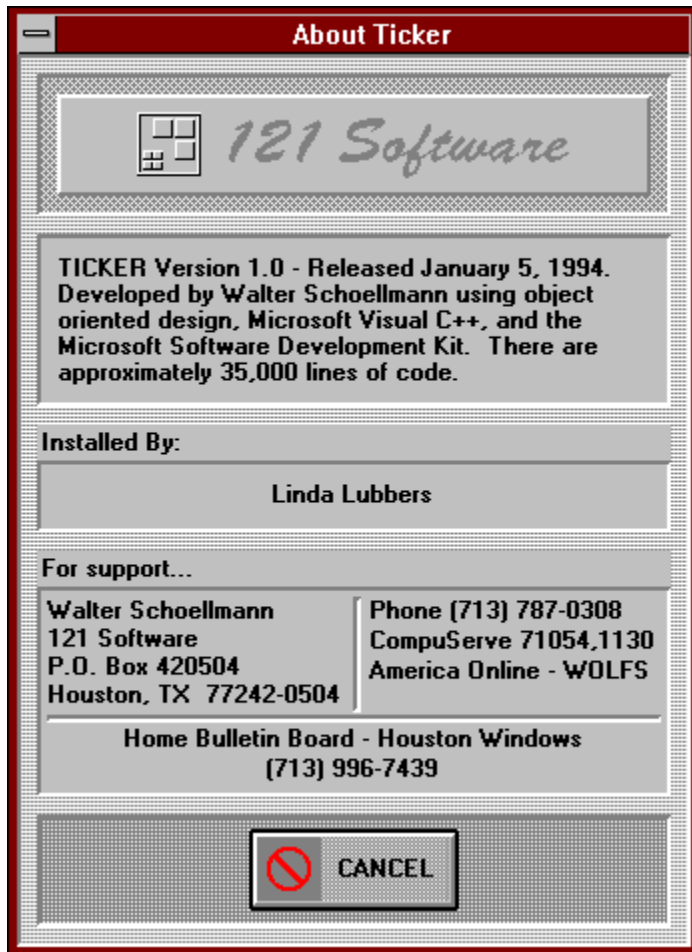
All orders for the Ticker source code must be made directly to 121 Software. Payment must be in cash, check or money order.

- 1) You will receive the complete C++ source, the DEF file, the RC file and all bitmaps, custom cursors and icons for Ticker.
- 2) You will also receive all of the RTF files, the SHG files, and the HPJ file for Ticker Help.
- 3) You will receive the FNT files, the DEF and RC files and a batch file to create the Ticker Fonts.
- 4) Finally, you will receive the MAK file and instructions on how to build Ticker.

This offer is made as is and updates will not be provided.

About Window

Use the hypergraphic screen image to select help for the actual controls of the window. Move the mouse to the control for which you want help. A hand indicates that specific help is available. Click the mouse and information particular to that control will be provided.



About Display - A little information about the construction of Ticker ... Ticker has over 30 modules, each performing their own memory management. There are 11 class objects to manage: rectangles, graphics, graphic objects, fonts, static screen objects, action screen objects, dates and times, drives, global data and timers. There are over 100 bitmaps, a custom cursor and 3 custom fonts. Graphics are performed by a combination of standard Windows functions and BitBlt raster operations. Screen flash is eliminated by inline assembly code.

Owner Display - The name of the registered owner is displayed if Ticker is registered. Otherwise the name of the person who installed Ticker is shown.

Author Address Display - Send your comments, problems, and registration moneys to this address. While the mail is cost effective, it is not always fast enough. For faster response, you may want to use one of the quick access methods to the right.

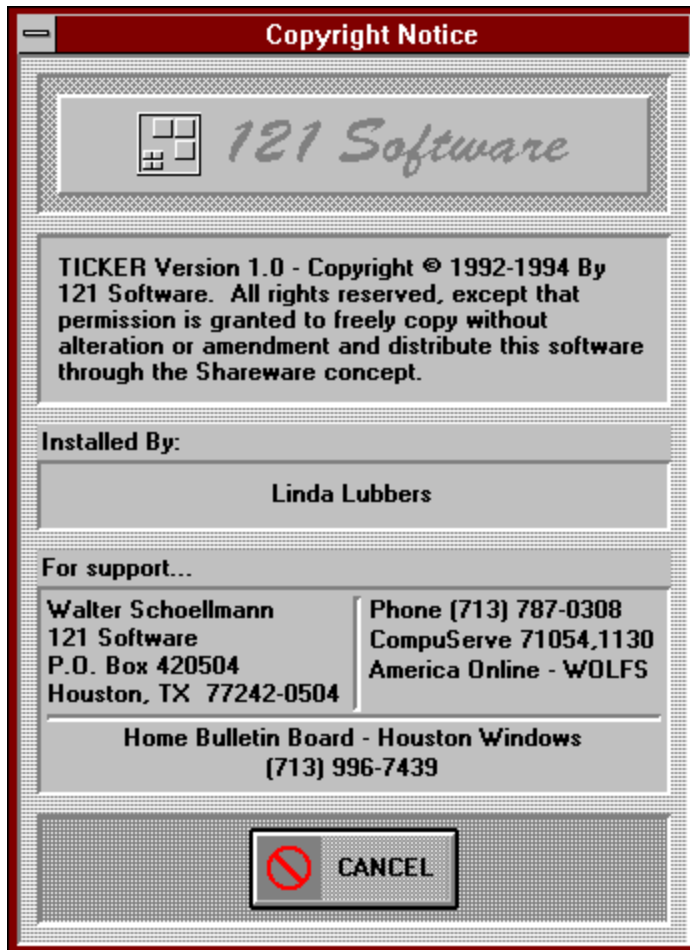
Author Quick Access Display - You can give me a call or send comments or problems using either CompuServe or America On-Line. I can also receive a fax if we coordinate. If you just want to get the latest version of Ticker, you should try the Home Bulletin Board listed below.

Home Bulletin Board Display - Houston Windows is the Home Bulletin Board for Ticker. The latest version of Ticker can always be found there. Messages for me can also be posted.

Cancel Button - The Cancel Button closes the window. It should be used after you have made changes and accepted them with the OK Button. You should also use the Cancel Button to close the window when you don't want to accept any changes that you have made.

Copyright Window

Use the hypergraphic screen image to select help for the actual controls of the window. Move the mouse to the control for which you want help. A hand indicates that specific help is available. Click the mouse and information particular to that control will be provided.



NOTE: The Copyright and Registration Reminder windows displayed at startup can be disabled by placing "no_notices" on the Ticker [Command Line](#).

Copyright Display - Through the Shareware concept, I am giving you the right to evaluate Ticker for a 30-day period. You may also copy and distribute Ticker to others so that they may evaluate its usefulness. You may upload Ticker to bulletin boards of your choosing. However, you may not use Ticker past the 30-day trial period. You may not distribute Ticker to others or to bulletin boards if you have changed it in any way. All rights to Ticker remain with me.

Owner Display - The name of the registered owner is displayed if Ticker is registered. Otherwise the name of the person who installed Ticker is shown.

Author Address Display - Send your comments, problems, and registration moneys to this address. While the mail is cost effective, it is not always fast enough. For faster response, you may want to use one of the quick access methods to the right.

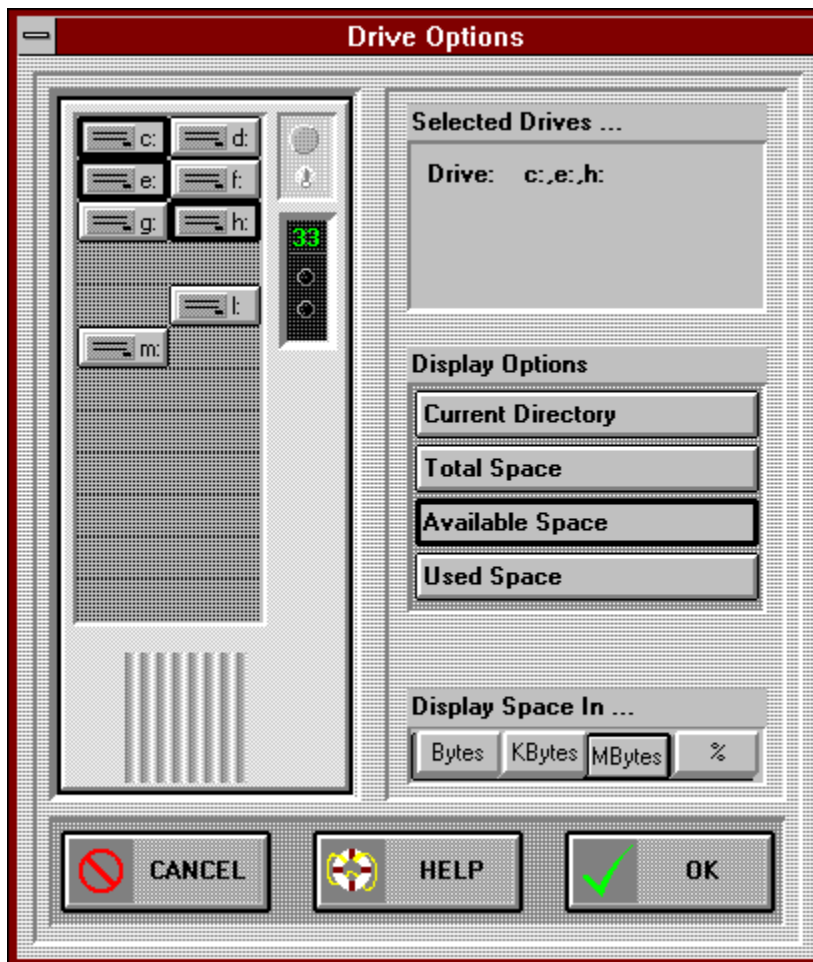
Author Quick Access Display - To send comments or get support on problems, you can give me a call or contact me using either CompuServe or America On-Line. I can also receive a fax if we coordinate. If you just want to get the latest version of Ticker, you should try the Home Bulletin Board listed below.

Home Bulletin Board Display - Houston Windows is the Home Bulletin Board for Ticker. The latest version of Ticker can always be found there. Messages for me can also be posted.

Cancel Button - The Cancel Button closes the window. It should be used after you have made changes and accepted them with the OK Button. You should also use the Cancel Button to close the window when you don't want to accept any changes that you have made.

Drive Options

Use the hypergraphic screen image to select help for the actual controls of the window. Move the mouse to the control for which you want help. A hand indicates that specific help is available. Click the mouse and information particular to that control will be provided.



Drive Button Latched - Each hard drive in your computer is represented by a Drive Button in the computer tower. Selected Drive Buttons are shown in a latched state. In the latched state the Drive Button loses its 3-D shadowing and has a dark border. Unlatched Drive Buttons are shown with 3-D shadowing (see d:, f:, g:, l: and m:). The options that you specify to the left will apply to all of the drives that are selected. Ticker Tape messages for the options are generated for each of the selected drives.

Drive Button - Each hard drive in your computer is represented by a Drive Button in the computer tower. Click on the Drive Button(s) for which you want hard drive information. To select multiple Drive Buttons hold the CONTROL key down when you click successive Drive Buttons. Selected Drive Buttons are shown in a latched state. In the latched state the Drive Button loses its 3-D shadowing and has a dark border (see c:, e: and h:). Unlatched Drive Buttons are shown with 3-D shadowing (see d:, f:, g:, l: and m:).

Drive Edit - You can specify selected drives with your keyboard using the Drive Edit control. The format for specifying the drives is the drive letter followed by a colon, with multiple drives separated by commas. The computer tower will confirm your selection.

Current Directory Button - Clicking on the Current Directory Button specifies a Ticker Tape message with the current directory for each of the selected hard drives. When the Current Directory Button is selected, it is shown in a latched state. In the latched state the Current Directory Button loses its 3-D shadowing and has a dark border (see Available Space).

Total Space Button - Selecting the Total Space Button specifies a Ticker Tape message with the total space for each of the selected hard drives. When the Total Space Button is selected, it is shown in a latched state. In the latched state the Total Space Button loses its 3-D shadowing and has a dark border (see Available Space).

Available Space Button - Choosing the Available Space Button specifies a Ticker Tape message with the available space for each of the selected hard drives. When the Available Space Button is selected, it is shown in a latched state. In the latched state the Available Space Button loses its 3-D shadowing and has a dark border (as shown).

Used Space Button - Clicking on the Used Space Button specifies a Ticker Tape message with the used space for each of the selected hard drives. When the Used Space Button is selected, it is shown in a latched state. In the latched state the Used Space Button loses its 3-D shadowing and has a dark border (see Available Space).

Units Radio Button - Use the Units Radio Button to specify the units (bytes, kilobytes, megabytes or percent) that should be used in the Ticker Tape messages that display disk space (see [Total Space Button](#), [Available Space Button](#) and [Used Space Button](#)).

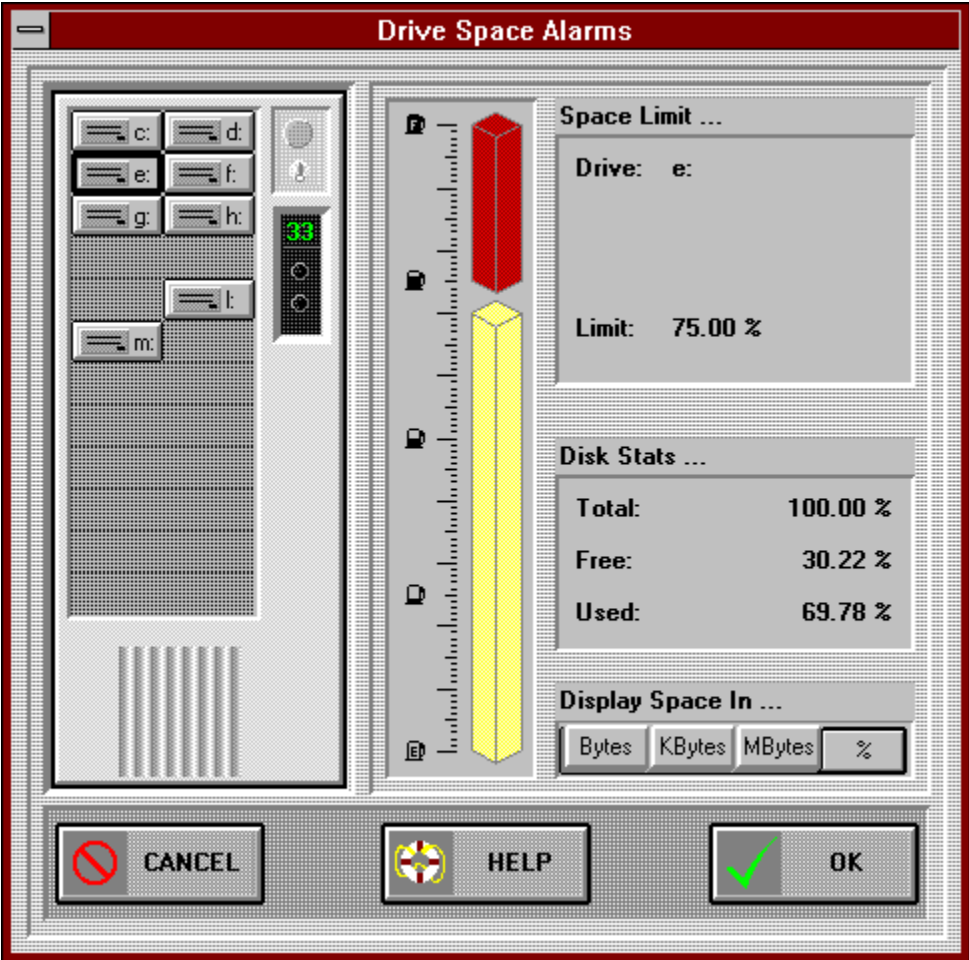
Cancel Button - The Cancel Button closes the window. It should be used after you have made changes and accepted them with the OK Button. You should also use the Cancel Button to close the window when you don't want to accept any changes that you have made.

Help Button - Use the Help Button to open context sensitive help for this window. Context sensitive help allows you to obtain information on each particular control used in the window. You may also access the entire contents of the Ticker help system.

OK Button - Use the OK Button to accept the changes that you have made. The window remains open to allow additional input. Use the Cancel Button to close the window after all input is complete.

Drive Space Alarms

Use the hypergraphic screen image to select help for the actual controls of the window. Move the mouse to the control for which you want help. A hand indicates that specific help is available. Click the mouse and information particular to that control will be provided.



Drive Button - Each hard drive in your computer is represented by a Drive Button. You can select a drive for a limit by clicking the mouse on the desired drive button. To select multiple Drive Buttons, hold the CONTROL key down when you click successive Drive Buttons. Selected Drive Buttons are shown in a latched state. In the latched state the Drive Button loses its 3-D shadowing and has a dark border (see g:). Unlatched Drive Buttons are shown with 3-D shadowing (as shown).

Drive Button Latched - Each hard drive in your computer is represented by a Drive Button. Selected Drive Buttons are shown in a latched state (as shown). In the latched state the Drive Button loses its 3-D shadowing and has a dark border. Unlatched Drive Buttons are shown with 3-D shadowing (see c:,d:, e:, f:, h:, l: and m:). The alarms that you specify will apply to all of the drives that are selected. Ticker Tape messages for the alarms are generated for each of the selected drives. NOTE: When specifying multiple drives, percent (%) units must be used.

Drive Limit Graph - The Drive Limit Graph depicts the existing space limit for the selected drive. The space limit is displayed as a red bar. The Drive Limit Graph is also an input control through which you can set the space limit. You can use the mouse to set the space limit by clicking in the Drive Limit Graph area. A limit cannot be set lower than the current used space on the drive (see [Drive Used Space Graph](#) or [Drive Used Space Display](#)). To clear a limit (set to total drive space), click just outside the top of the Drive Limit Graph area. The Drive Limit Graph cannot be used to display the limits of multiple selected drives. However, multiple drive limits can be set using the Drive Limit Graph.

Drive Used Space Graph - The Drive Limit Graph graphically depicts the existing used space for the selected drive. The used space is displayed as a yellow bar (also see [Drive Used Space Display](#)). A limit cannot be set lower than the current used space on the drive.
NOTE: The Drive Used Space Graph is only shown when one drive is selected.

Drive Edit - You can specify selected drives with your keyboard using the Drive Edit control. The format for specifying the drives is the drive letter followed by a colon, with multiple drives separated by commas. The computer tower will confirm your selection.

Drive Limit Edit - You can set drive limits with the keyboard. The default limit for the selected drive is the total space on the drive. A limit cannot be set lower than the current used space on the drive (see [Drive Used Space Graph](#) or [Drive Used Space Display](#)). The unit (bytes, kilobytes, megabytes, percent) used to set the limit is selected with the Units Radio Button below. Commas are used to display the limit but are not required when entering. Use the Disk Statistics display to verify the appropriateness of your limit. When multiple drives are selected, the drive limit is not displayed.

Drive Total Space Display - The total space is displayed for the selected drive. When multiple drives are selected, total space is not displayed.

Drive Free Space Display - The free space for the selected drive is displayed. When multiple drives are selected, free space is not displayed.

Drive Used Space Display - The used space is displayed for the selected drive (see also [Drive Used Space Graph](#)). When multiple drives are selected, used space is not displayed.

Drive Space Units Radio Button - Select your preferred units (bytes, kilobytes, megabytes or percent) for drive space displays (see [Drive Total Space Display](#), [Drive Free Space Display](#) and [Drive Used Space Display](#)) by clicking on your selection. Only percent (%) units are valid when multiple drives are selected.

Cancel Button - The Cancel Button closes the window. It should be used after you have made changes and accepted them with the OK Button. You should also use the Cancel Button to close the window when you don't want to accept any changes that you have made.

Help Button - Use the Help Button to open context sensitive help for this window. Context sensitive help allows you to obtain information on each particular control used in the window. You may also access the entire contents of the Ticker help system.

OK Button - Use the OK Button to accept the changes that you have made. The window remains open to allow additional input. Use the Cancel Button to close the window after all input is complete.

Date Assist

Use the hypergraphic screen image to select help for the actual controls of the window. Move the mouse to the control for which you want help. A hand indicates that specific help is available. Click the mouse and information particular to that control will be provided.



Previous Month Button - The Previous Month Button adjusts the calendar date backward one month. All displays on the calendar are updated. The selected day of the month is preserved. In the case when the previous month does not have enough days to preserve the selected day of the month, the last day of the previous month will be selected.

Previous Year Button - The Previous Year Button will adjust the calendar date backward one year. All displays are updated. The selected day of the month is preserved. In the case when the new month does not have enough days to preserve the selected day of the month, the last day of the new month will be selected. Years before 1900 are not supported.

Date Display - The Date Display shows the currently selected date. This date is provided to the window from which Date Assist was activated.

Next Month Button - Clicking the Next Month Button adjusts the calendar date forward one month. All displays are updated. The selected day of the month is preserved. In the case when the next month does not have enough days to preserve the selected day of the month, the last day of the next month will be selected.

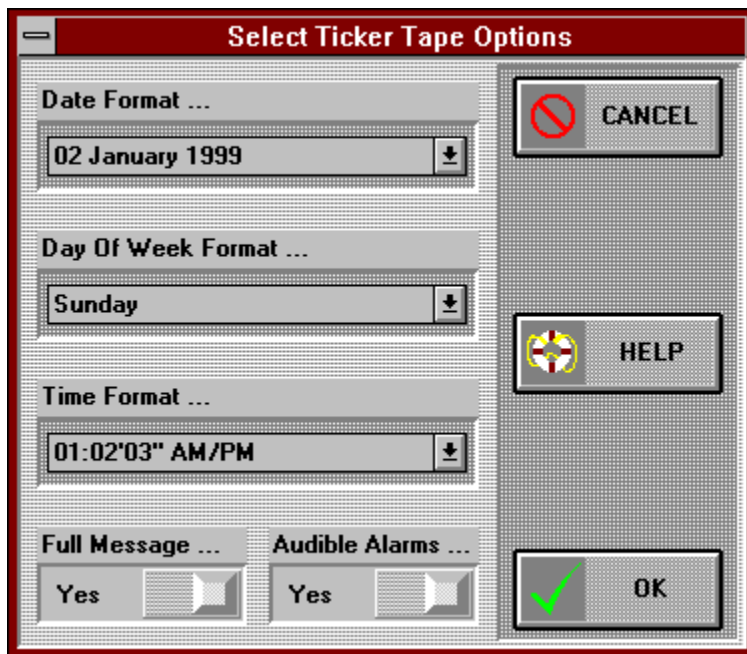
Next Year Button - Select the Next Year Button to adjust the calendar date forward one year. All displays are updated. The selected day of the month is preserved. In the case when the new month does not have enough days to preserve the selected day of the month, the last day of the new month will be selected. Years after 1999 are not supported.

Day Button - Use the Day Buttons to select the day of the month.

Day Button Latched - The selected Day Button is shown in a latched state. In the latched state the Day Button loses its 3-D shadowing and has a dark border.

Select Ticker Tape Options

Use the hypergraphic screen image to select help for the actual controls of the window. Move the mouse to the control for which you want help. A hand indicates that specific help is available. Click the mouse and information particular to that control will be provided.



Date Format Combo - Use the Date Format Combo to select a date format for Ticker Tape messages.

Day of Week Format Combo - Use the Day of Week Format Combo to select a day of week format for Ticker Tape messages.

Time Format Combo - Use the Time Format Combo to select a time format for Ticker Tape messages.

Full Message Slide - Use the Full Message Slide to select either the Full Message Format or the Abbreviated Message Format for Ticker Tape messages.

Audible Alarm Slide - Use the Audible Alarm Slide to select or deselect audible alarms for Ticker Tape alarm messages.

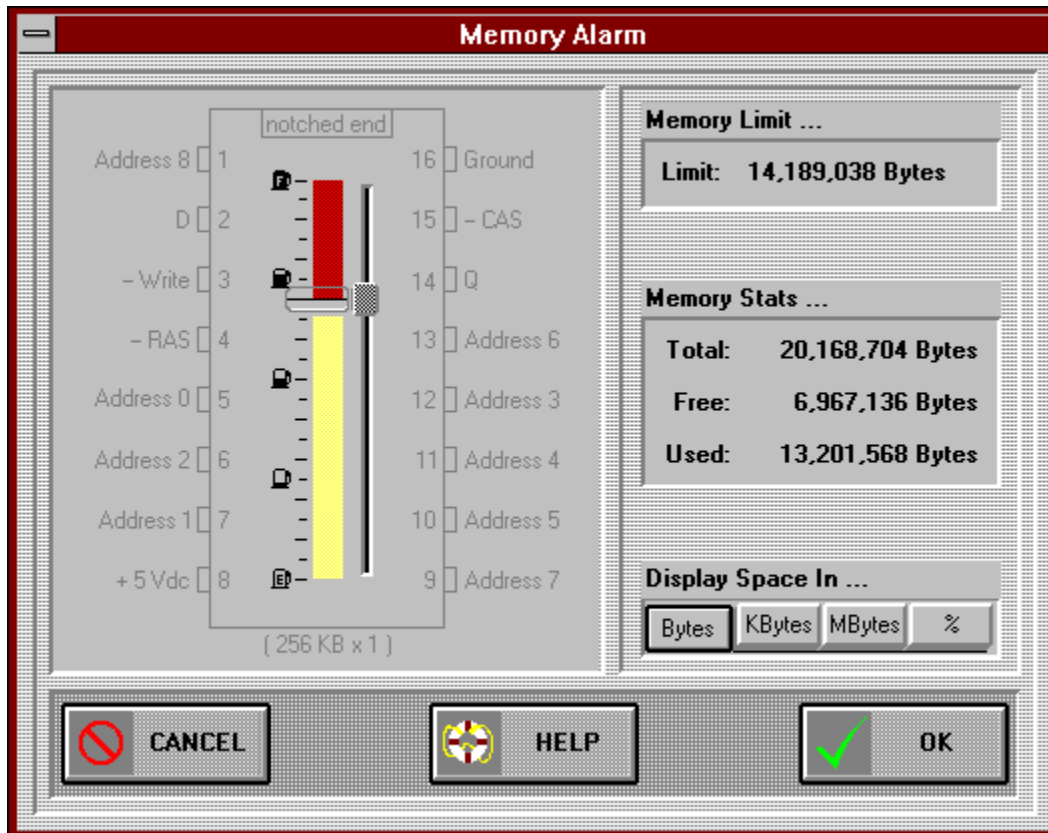
Cancel Button - The Cancel Button closes the window. It should be used after you have made changes and accepted them with the OK Button. You should also use the Cancel Button to close the window when you don't want to accept any changes that you have made.

Help Button - Use the Help Button to open context sensitive help for this window. Context sensitive help allows you to obtain information on each particular control used in the window. You may also access the entire contents of the Ticker help system.

OK Button - Use the OK Button to accept the changes that you have made. The window remains open to allow additional input. Use the Cancel Button to close the window after all input is complete.

Memory Alarm

Use the hypergraphic screen image to select help for the actual controls of the window. Move the mouse to the control for which you want help. A hand indicates that specific help is available. Click the mouse and information particular to that control will be provided.



Memory Limit Graph - The Memory Limit Graph depicts the existing memory limit. The memory limit is displayed as a red bar. The memory limit is also shown quantitatively in the [Memory Limit Edit](#).

Memory Limit Thumb Slide - Drag the Memory Limit Thumb Slide to set your memory limit. A limit cannot be set lower than the current used memory (see [Used Memory Graph](#) or [Used Memory Display](#)). Also, the memory limit cannot be set higher than the total memory in your system (see [Total Memory Display](#)). To clear a memory limit (set to total memory), drag the thumb slide to the top of the [Memory Limit Graph](#).

Used Memory Graph - The Used Memory Graph shows the amount of memory currently in use in your system. The used memory is displayed as a yellow bar. The used memory is also shown quantitatively in the [Used Memory Display](#).

Memory Limit Edit - Use your keyboard and the Memory Limit Edit to set your limit for the Memory Alarm. A limit cannot be set lower than the current used memory (see [Used Memory Graph](#) or [Used Memory Display](#)). Also, the memory limit cannot be set higher than the total memory in your system (see [Total Memory Display](#)). To clear a memory limit, set the Memory Limit Edit to 100%.

Total Memory Display - The Total Memory Display shows the total memory available to Windows and your applications. The amount shown is the total memory being managed by the Windows memory manager. Because Windows supports virtual memory, the amount shown may exceed the physical memory installed in your system.

Free Memory Display - The Free Memory Display shows the current free memory available in your system.

Used Memory Display - The Used Memory Display shows the amount of memory in use in your system.

Memory Units Radio Buttons - Select your preferred memory units for displays by clicking on bytes, kilobytes, megabytes or percent.

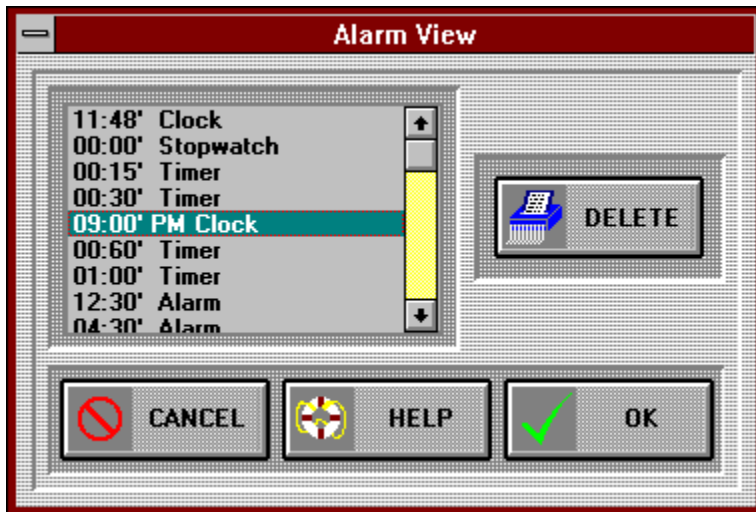
Cancel Button - The Cancel Button closes the window. It should be used after you have made changes and accepted them with the OK Button. You should also use the Cancel Button to close the window when you don't want to accept any changes that you have made.

Help Button - Use the Help Button to open context sensitive help for this window. Context sensitive help allows you to obtain information on each particular control used in the window. You may also access the entire contents of the Ticker help system.

OK Button - Use the OK Button to accept the changes that you have made. The window remains open to allow additional input. Use the Cancel Button to close the window after all input is complete.

Time Alarm View

Use the hypergraphic screen image to select help for the actual controls of the window. Move the mouse to the control for which you want help. A hand indicates that specific help is available. Click the mouse and information particular to that control will be provided.



Time Alarm List Box - Existing time alarms are displayed in the Time Alarm List Box. Selected time alarms are highlighted by the highlight color that you specified in Windows. A time alarm must be selected in this list box in order to be deleted using the Delete Button to the right. If more alarms exist than can be displayed, use the vertical scroll bar to scroll more into view.

Vertical Scroll Bar - The Vertical Scroll Bar scrolls additional time alarms into the Time Alarm List Box.

Delete Button - The Delete Button deletes the time alarm selected in the Time Alarm List Box. The delete action does not offer a confirmation notice. The time alarm is deleted when the Delete Button is clicked. The OK Button is not necessary for the delete operation.

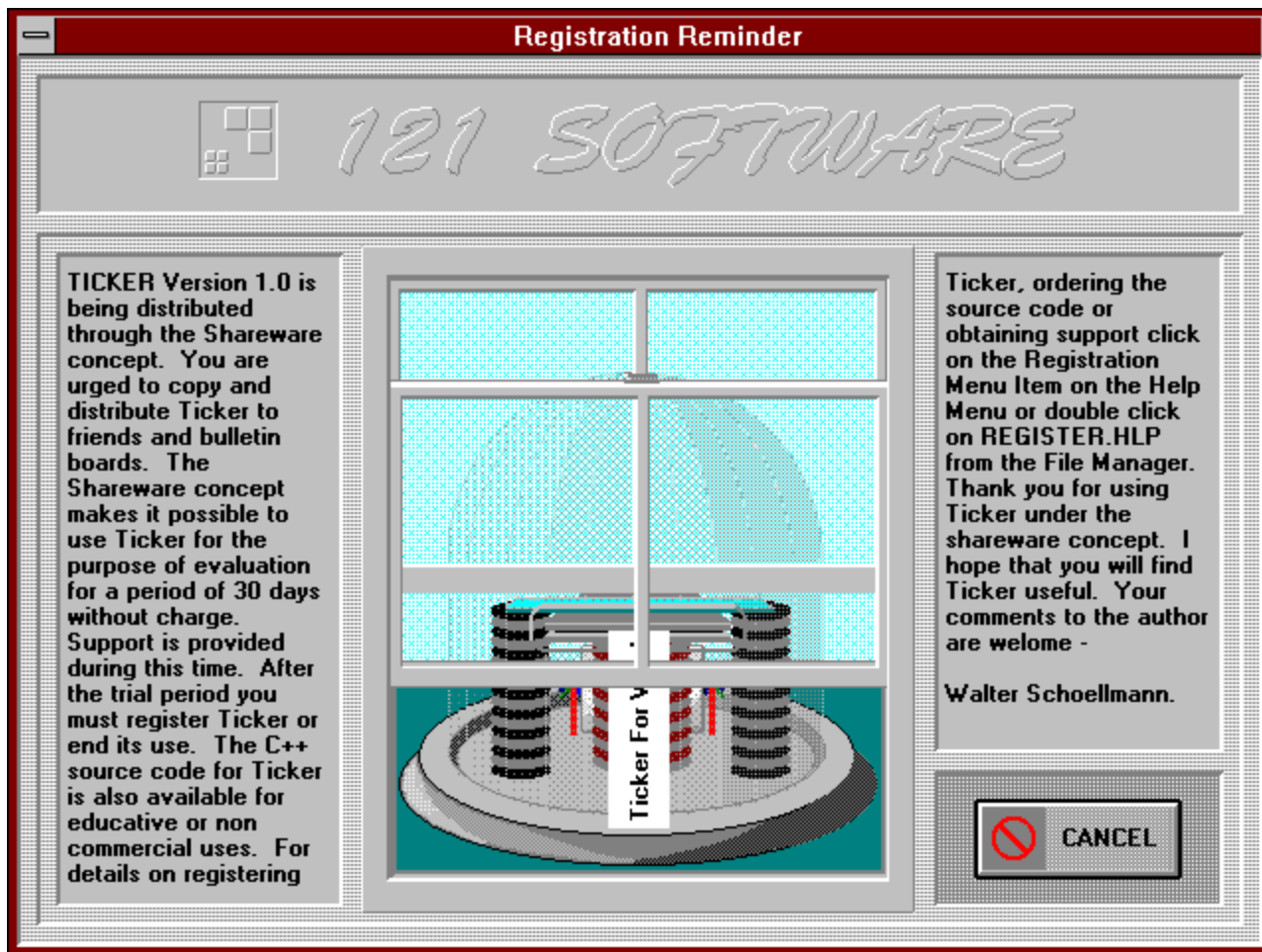
Cancel Button - The Cancel Button closes the window.

Help Button - Use the Help Button to open context sensitive help for this window. Context sensitive help allows you to obtain information on each particular control used in the window. You may also access the entire contents of the Ticker help system.

The OK Button is not functional for this window. Use the Cancel Button to close the window after all input is complete.

Registration Reminder Window

Use the hypergraphic screen image to select help for the actual controls of the window. Move the mouse to the control for which you want help. A hand indicates that specific help is available. Click the mouse and information particular to that control will be provided.

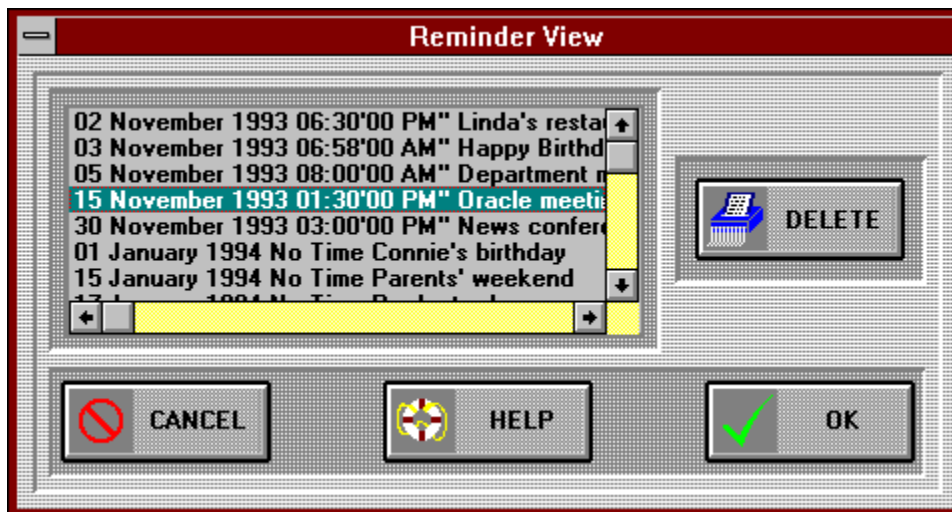


NOTE: The Registration Reminder and Copyright windows displayed at startup can be disabled by placing "no_notices" on the Ticker [Command Line](#).

Stock Market Ticker Display - This ticker tape machine is a concretization of Maxwell's equations. You can take the programmer out of physics, but you can't take the physicist out of the programmer.

Reminder View

Use the hypergraphic screen image to select help for the actual controls of the window. Move the mouse to the control for which you want help. A hand indicates that specific help is available. Click the mouse and information particular to that control will be provided.



Reminder List Box - Existing reminders are displayed in this list box. Selected reminders are highlighted by the highlight color that you specified in Windows. A reminder must be selected in this list box in order to be deleted using the Delete Button to the right. If more reminders exist than can be displayed, use the vertical scroll bar to scroll more into view.

Vertical Scroll Bar - The Vertical Scroll Bar scrolls additional reminders into the Reminder List Box.

Horizontal Scroll Bar - The Horizontal Scroll Bar scrolls the reminders horizontally allowing you to view reminders that are too long to fit the Reminder List Box.

Delete Button - The Delete Button deletes the reminder selected in the Reminder List Box. The delete action does not offer a confirmation notice. The reminder is deleted when the Delete Button is clicked. The OK Button is not necessary for the delete operation.

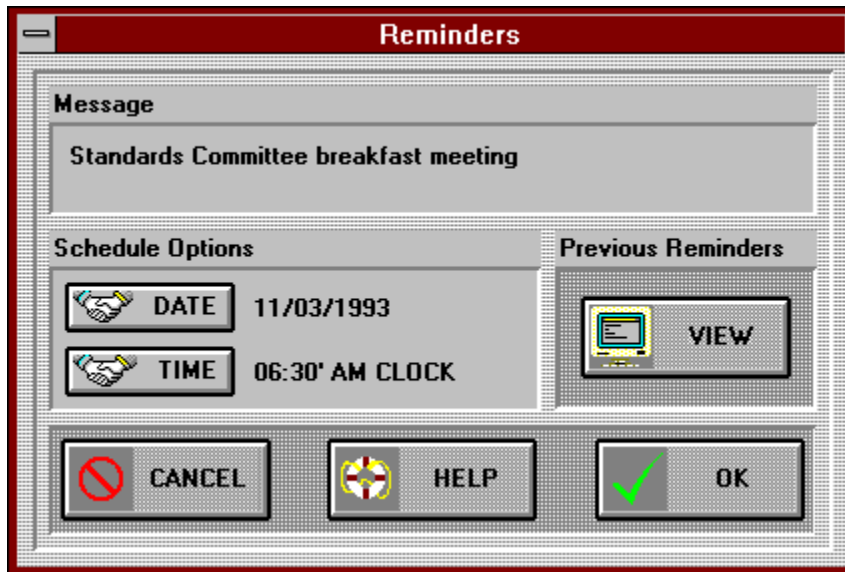
Cancel Button - The Cancel Button is the way to close the window.

Help Button - Use the Help Button to open context sensitive help for this window. Context sensitive help allows you to obtain information on each particular control used in the window. You may also access the entire contents of the Ticker help system.

The OK Button is not functional for this window. Use the Cancel Button to close the window after all input is complete.

Reminders

Use the hypergraphic screen image to select help for the actual controls of the window. Move the mouse to the control for which you want help. A hand indicates that specific help is available. Click the mouse and information particular to that control will be provided.



Note: The maximum number of reminders and time alarms is 20 for this version of Ticker.

Message Edit - Use the Message Edit control to enter the reminder message. The maximum length of the message is 70 characters. A reminder must consist of a message and either a date or a time.

Date Assist Button - Click on the Date Assist Button to activate the Date Assist calendar (see [Date Assist Window](#)). The Date Assist calendar can be used to select the display date for the reminder. If no time is specified, the reminder will be displayed all day on the date entered. If a time is specified, the reminder will be displayed after the time on the date entered. Years before 1900 and after 1999 are not supported.

Date Edit - Use your keyboard and the Date Edit control to enter the date for the reminder to be displayed. The format for the date is in the mm/dd/yyyy format. If no time is specified, the reminder will be displayed all day on the date entered. If a time is specified, the reminder will be displayed after the time on the date entered. Years before 1900 and after 1999 are not supported.

Time Assist Button - Choose the Time Assist Button to activate the Time Assist digital watch (see [Time Assist Window](#)). The Time Assist digital watch can be used to specify the time for the reminder to be displayed. If no date is entered, the reminder will be displayed every day after the time entered. If a date is specified, the reminder will be displayed after the time on the date entered.

Time Edit - Using your keyboard and the Time Edit control you can specify the time for the reminder to be displayed. The format for the time is hh:mm:ss" AM or PM. If 24 hour time is used, the AM/PM indicator should be omitted. The CLOCK time mode may be appended but is not required. When no time is specified, the reminder will be displayed all day on the date entered. If a time is specified, the reminder will be displayed after the time on the date entered.

View Button - Click the View Button to open the [Reminder View](#) window. From the Reminder View window, previous reminders can be viewed and deleted.

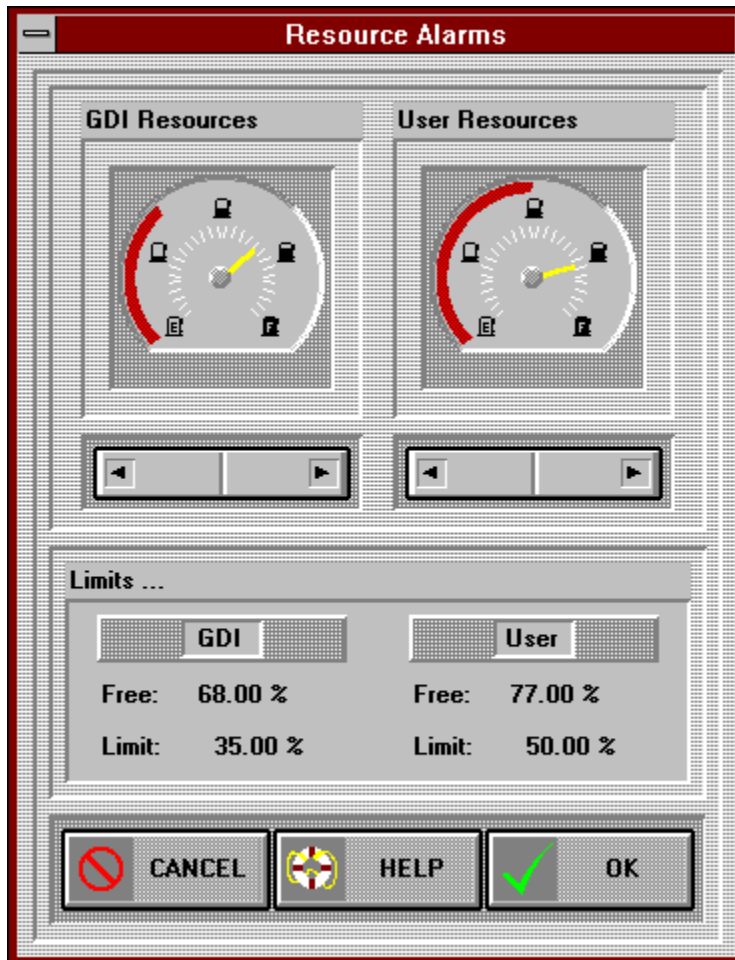
Cancel Button - The Cancel Button closes the window. It should be used after you have made changes and accepted them with the OK Button. You should also use the Cancel Button to close the window when you don't want to accept any changes that you have made.

Help Button - Use the Help Button to open context sensitive help for this window. Context sensitive help allows you to obtain information on each particular control used in the window. You may also access the entire contents of the Ticker help system.

OK Button - Use the OK Button to accept the changes that you have made. The window remains open to allow additional input. Use the Cancel Button to close the window after all input is complete.

Resource Alarms

Use the hypergraphic screen image to select help for the actual controls of the window. Move the mouse to the control for which you want help. A hand indicates that specific help is available. Click the mouse and information particular to that control will be provided.



GDI Limit Red Line - The GDI Limit Red Line graphically depicts the existing limit for free GDI resources. The GDI Limit Red Line is displayed as a red arc. The GDI Limit Red Line is also an input control through which you can set the free GDI resource limit. Use the mouse to set the GDI resource limit by clicking in the GDI Limit Red Line arc. A limit cannot be set higher than the current free GDI resource level (see [GDI Free Gauge](#) or [GDI Free Display](#)). A limit cannot be set lower than zero. To clear a limit (set to 0), click just outside the left bottom of the GDI Limit Red Line arc. To set the maximum limit (set to the free GDI resource level), click just outside the right bottom of the GDI Limit Red Line arc.

GDI Free Gauge - The GDI Free Gauge shows the current GDI resource level. The current GDI resource level is also shown quantitatively in the [GDI Free Display](#).

Left GDI Resource Rocker Button - The Left GDI Resource Rocker Button decrements the free GDI resource limit. Automatic decrementing can be activated by holding down the CONTROL key when you click the mouse. A limit cannot be set lower than zero. To clear a limit, click the Left GDI Resource Rocker Button until the GDI resource limit is zero.

Right GDI Resource Rocker Button - The Right GDI Resource Rocker Button increments the free GDI resource limit. Automatic incrementing can be activated by holding down the CONTROL key when you click the mouse. A limit cannot be set higher than the current free GDI resource level (see [GDI Free Gauge](#) or [GDI Free Display](#)). To set a limit to the maximum, click the Right GDI Resource Rocker Button until the GDI resource limit equals the current free GDI resource level.

User Limit Red Line - The User Limit Red Line graphically depicts the existing limit for free user resources. The User Limit Red Line is displayed as a red arc. The User Limit Red Line is also an input control through which you can set the free user resource limit. Use the mouse to set the user resource limit by clicking in the User Limit Red Line arc. A limit cannot be set higher than the current free user resource level (see [User Free Gauge](#) or [User Free Display](#)). A limit cannot be set lower than zero. To clear a limit (set to 0), click just outside the left bottom of the User Limit Red Line arc. To set the maximum limit (set to the free user resource level), click just outside the right bottom of the User Limit Red Line arc.

User Free Gauge - The User Free Gauge shows the current user resource level. The current user resource level is also shown quantitatively in the [User Free Display](#).

Left User Resource Rocker Button - The Left User Resource Rocker Button decrements the free user resource limit. Automatic decrementing can be activated by holding down the CONTROL key when you click the mouse. A limit cannot be set lower than zero. To clear a limit, click the Left User Resource Rocker Button until the user resource limit is zero.

Right User Resource Rocker Button - The Right User Resource Rocker Button increments the free user resource limit. Automatic incrementing can be activated by holding down the CONTROL key when you click the mouse. A limit cannot be set higher than the current free user resource level (see [User Free Gauge](#) or [User Free Display](#)). To set a limit to the maximum, click the Right User Resource Rocker Button until the user resource limit equals the current free user resource level.

GDI Free Display - The GDI Free Display shows the current system resource level. The current GDI resource level is also shown graphically in the [GDI Free Gauge](#).

GDI Limit Edit - Use the keyboard and the GDI Limit Edit control to specify the GDI resource limit. A limit cannot be set higher than the current free GDI resource level (see [GDI Free Gauge](#) or [GDI Free Display](#)). A limit cannot be set lower than zero. To clear a limit, set the GDI Limit Edit to zero. To set the maximum limit set the GDI Limit Edit to the free GDI resource level.

User Free Display - The User Free Display shows the current system resource level. The current user resource level is also shown graphically in the [User Free Gauge](#).

User Limit Edit - Use the keyboard and the User Limit Edit control to specify the user resource limit. A limit cannot be set higher than the current free user resource level (see [User Free Gauge](#) or [User Free Display](#)). A limit cannot be set lower than zero. To clear a limit, set the User Limit Edit to zero. To set the maximum limit, set the User Limit Edit to the free user resource level.

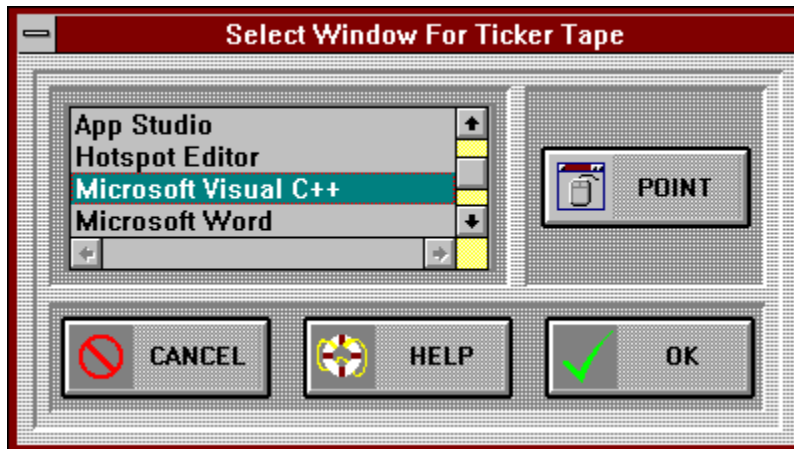
Cancel Button - The Cancel Button closes the window. It should be used after you have made changes and accepted them with the OK Button. You should also use the Cancel Button to close the window when you don't want to accept any changes that you have made.

Help Button - Use the Help Button to open context sensitive help for this window. Context sensitive help allows you to obtain information on each particular control used in the window. You may also access the entire contents of the Ticker help system.

OK Button - Use the OK Button to accept the changes that you have made. The window remains open to allow additional input. Use the Cancel Button to close the window after all input is complete.

Select Window For Ticker Tape

Use the hypergraphic screen image to select help for the actual controls of the window. Move the mouse to the control for which you want help. A hand indicates that specific help is available. Click the mouse and information particular to that control will be provided.



Select Window List Box - Select a window from the Select Window List Box for the Ticker Tape to reside. The Ticker Tape will occupy the title area of the window. All existing top level windows are displayed. The selected window is highlighted by the highlight color that you specified in Windows. If more windows exist than can be displayed, use the vertical scroll bar to scroll more into view.

Horizontal Elevator - The Horizontal Scroll Bar scrolls the top level window titles horizontally allowing you to view window titles too long to fit the Select Window List Box.

Vertical Elevator - The Vertical Scroll Bar scrolls additional top level windows into the Select Window List Box.

Point Button - Use the Point Button as an alternative to selecting a top level window from the Select Window List Box. Click on the Point Button and then click on the top level window on which you want the Ticker Tape to reside. The Ticker Tape will occupy the title area of the window selected.

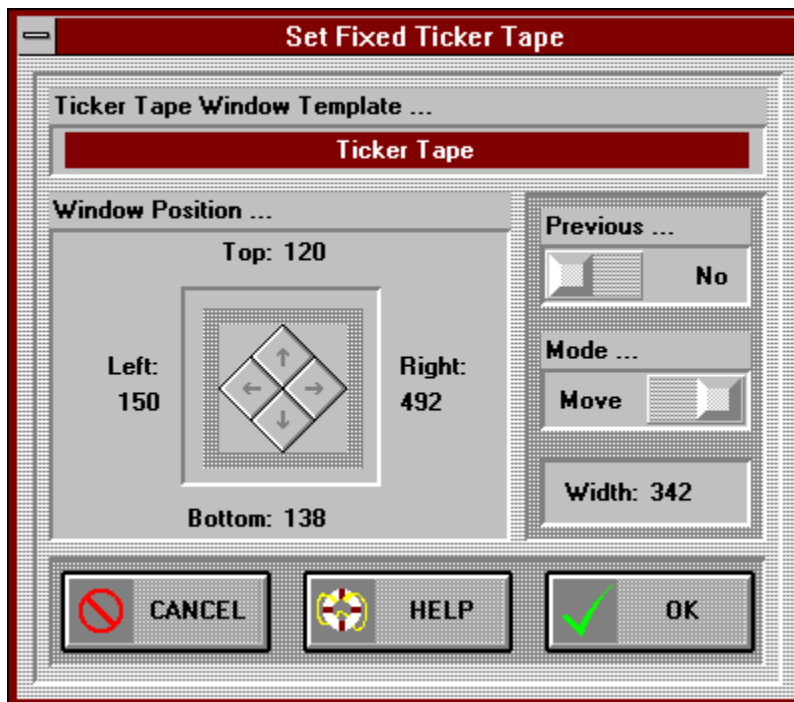
Cancel Button - The Cancel Button closes the window. It should be used after you have made changes and accepted them with the OK Button. You should also use the Cancel Button to close the window when you don't want to accept any changes that you have made.

Help Button - Use the Help Button to open context sensitive help for this window. Context sensitive help allows you to obtain information on each particular control used in the window. You may also access the entire contents of the Ticker help system.

OK Button - Use the OK Button to accept the changes that you have made. The window remains open to allow additional input. Use the Cancel Button to close the window after all input is complete.

Set Fixed Ticker Tape

Use the hypergraphic screen image to select help for the actual controls of the window. Move the mouse to the control for which you want help. A hand indicates that specific help is available. Click the mouse and information particular to that control will be provided.



Ticker Tape Window Template - Drag and drop the Ticker Tape Window Template to the screen location where you want to fix the Ticker Tape. The Ticker Tape Position Edit controls or the Ticker Tape Position Buttons can be used to precisely set a location. The width of the Ticker Tape can be adjusted by switching the Mode Slide to Size Mode. In Size Mode the Ticker Tape Window Template will have a sizing frame facilitating width changes. The minimum width is 100 pixels and the maximum width is the width of the screen. The height of the Ticker Tape cannot be adjusted. It is 18 pixels for small system fonts and 26 pixels for large system fonts.

Top Ticker Tape Position Edit - When the Mode Slide is in Move Mode, you can precisely set the top position of the Ticker Tape with the Top Ticker Tape Position Edit control. The bottom of the Ticker Tape will move along with the top value that you specify. When the Mode Slide is in Size Mode, the Top Ticker Tape Position Edit control has no function. The minimum top position is 0 pixels and the maximum is the screen height minus the height of the Ticker Tape.

Right Ticker Tape Position Edit - When the Mode Slide is in Move Mode, you can precisely set the right position of the Ticker Tape with the Right Ticker Tape Position Edit control. The left of the Ticker Tape will move along with the right value that you specify. When the Mode Slide is in Size Mode, the Right Ticker Tape Position Edit control resizes the right side of the Ticker Tape. The left side of the Ticker Tape will stay fixed. The minimum right position is 100 pixels and the maximum is the screen width. The minimum width is 100 pixels and the maximum width is the screen width.

Bottom Ticker Tape Position Edit - When the Mode Slide is in Move Mode, you can precisely set the bottom position of the Ticker Tape with the Bottom Ticker Tape Position Edit control. The top of the Ticker Tape will move along with the bottom value that you specify. When the Mode Slide is in Size Mode, the Bottom Ticker Tape Position Edit control has no function. The minimum bottom position is the height of the Ticker Tape and the maximum is the screen height.

Left Ticker Tape Position Edit - When the Mode Slide is in Move Mode, you can precisely set the left position of the Ticker Tape with the Left Ticker Tape Position Edit control. The right of the Ticker Tape will move along with the left value that you specify. When the Mode Slide is in Size Mode, the Left Ticker Tape Position Edit control resizes the left side of the Ticker Tape. The right side of the Ticker Tape will stay fixed. The minimum left position is 0 pixels and the maximum is the screen width minus 100 pixels. The minimum width is 100 pixels and the maximum width is the width of the screen.

Top Ticker Tape Position Button - When the Mode Slide is in Move Mode, you can precisely set the top position of the Ticker Tape with the Top Ticker Tape Position Button. Clicking the button increments the top position of the Ticker Tape by one pixel. Holding the SHIFT key while clicking the Top Ticker Tape Position Button decrements the top position of the Ticker Tape by one pixel. Automatic incrementing/decrementing can be activated by holding down the CONTROL key when you click the mouse. The bottom of the Ticker Tape will move along with the top value that you specify. When the Mode Slide is in Size Mode, the Top Ticker Tape Position Button has no function. The minimum top position is 0 pixels and the maximum is the screen height minus the height of the Ticker Tape.

Right Ticker Tape Position Button - When the Mode Slide is in Move Mode, you can precisely set the right position of the Ticker Tape with the Right Ticker Tape Position Button. Clicking the button increments the right position of the Ticker Tape by one pixel. Holding the SHIFT key while clicking the Right Ticker Tape Position Button decrements the right position of the Ticker Tape by one pixel. Automatic incrementing/decrementing can be activated by holding down the CONTROL key when you click the mouse. The left of the Ticker Tape will move along with the right value that you specify. When the Mode Slide is in Size Mode, the Right Ticker Tape Position Button increments the left side of the Ticker Tape width by one pixel to the left. Holding the SHIFT key while clicking the Left Ticker Tape Position Button decrements the left side of the Ticker Tape width by one pixel to the right. Automatic incrementing/decrementing can be activated by holding down the CONTROL key when you click the mouse. The minimum right position is 100 pixels and the maximum is the screen width.

Bottom Ticker Tape Position Button - When the Mode Slide is in Move Mode, you can precisely set the bottom position of the Ticker Tape with the Bottom Ticker Tape Position Button. Clicking the button increments the bottom position of the Ticker Tape by one pixel. Holding the SHIFT key while clicking the Bottom Ticker Tape Position Button decrements the bottom position of the Ticker Tape by one pixel. Automatic incrementing/decrementing can be activated by holding down the CONTROL key when you click the mouse. The top of the Ticker Tape will move along with the bottom value that you specify. When the Mode Slide is in Size Mode, the Bottom Ticker Tape Position Button has no function. The minimum bottom position is the height of the Ticker Tape and the maximum is the screen height.

Left Ticker Tape Position Button - When the Mode Slide is in Move Mode, you can precisely set the left position of the Ticker Tape with the Left Ticker Tape Position Button. Clicking the button increments the left position of the Ticker Tape by one pixel. Holding the SHIFT key while clicking the Left Ticker Tape Position Button decrements the left position of the Ticker Tape by one pixel. Automatic incrementing/decrementing can be activated by holding down the CONTROL key when you click the mouse. The right of the Ticker Tape will move along with the left value that you specify. When the Mode Slide is in Size Mode, the Left Ticker Tape Position Button increments the left side of the Ticker Tape width by one pixel to the left. Holding the SHIFT key while clicking the Left Ticker Tape Position Button decrements the left side of the Ticker Tape width by one pixel to the right. Automatic incrementing/decrementing can be activated by holding down the CONTROL key when you click the mouse. The minimum left position is 0 pixels and the maximum is the screen width minus 100 pixels.

Previous Slide - Clicking the Previous Slide handle to Yes will set the Ticker Tape Window Template to the position and width of the previous fixed window position. Your local settings are saved and can be restored by moving the Previous Slide handle to No.

Mode Slide - The Mode Slide sets the mode for the positioning controls associated with the Ticker Tape. Clicking on the Mode Slide handle toggles the positioning mode between Move and Size. In Move mode the positioning controls move the Ticker Tape. In Size mode the positioning controls are used to change the width the Ticker Tape. The positioning controls are: Ticker Tape Window Template, Ticker Tape Position Edits, Ticker Tape Position Buttons and the Width Edit.

Width Edit - When the Mode Slide is in Move Mode, the Width Edit has no function. When the Mode Slide is in Size Mode, the Width Edit sets the width of the Ticker Tape. The minimum width is 100 pixels and the maximum is the screen width.

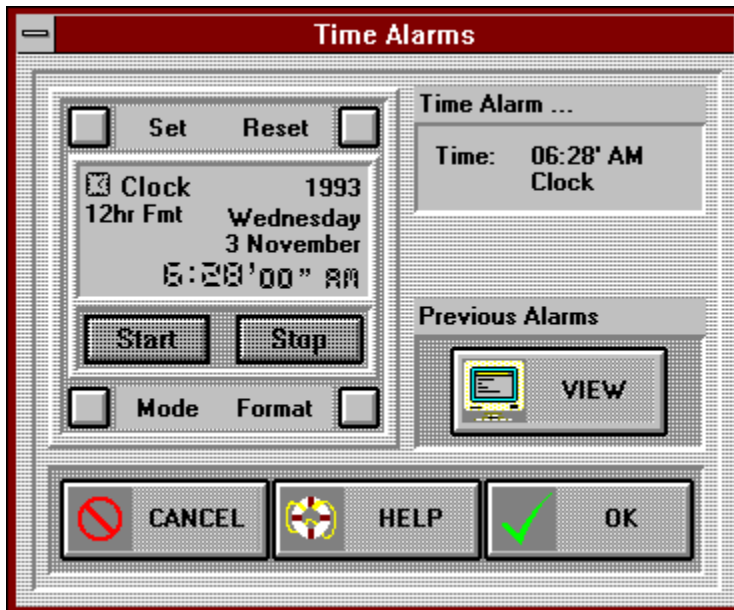
Cancel Button - The Cancel Button closes the window. It should be used after you have made changes and accepted them with the OK Button. You should also use the Cancel Button to close the window when you don't want to accept any changes that you have made.

Help Button - Use the Help Button to open context sensitive help for this window. Context sensitive help allows you to obtain information on each particular control used in the window. You may also access the entire contents of the Ticker help system.

OK Button - Use the OK Button to accept the changes that you have made. The window remains open to allow additional input. Use the Cancel Button to close the window after all input is complete.

Time Alarms

Use the hypergraphic screen image to select help for the actual controls of the window. Move the mouse to the control for which you want help. A hand indicates that specific help is available. Click the mouse and information particular to that control will be provided.



Note: The maximum number of time alarms and reminders is 20 for this version of Ticker.

Set Button - Click the Set Button to toggle on and off the Set Mode of the Digital Watch. The Set Mode must be on in order to change the time of the Digital Watch. When the Set Mode is on, the Set Button is shown in a latched state. In the latched state the Set Button loses its 3-D shadowing and has a dark border. When the Set Mode is off, the Set Button is shown in an up state with 3-D shadowing (as shown). To set the time you use the segment display ([Hour Edit](#), [Minute Edit](#), [Second Edit](#) and if necessary the [AM / PM Edit](#)). NOTE: The [Format Button](#) and the [Mode Button](#) are disabled when the Set Button is on.

Reset Button - The Reset Button sets the time on the Digital Watch to the current time when the Digital Watch Mode is either Clock or Alarm. When the Digital Watch Mode is either Stopwatch or Timer, the Reset Button Sets the time to zero.

Mode Display - The current Mode of the Digital Watch is shown in the Mode Display. The Modes are: Clock, Stopwatch, Timer, Alarm. In Clock Mode the time you specify will trigger an alarm that day at the specified time. In Stopwatch Mode an alarm will sound when the elapsed time is greater than the specified time. The elapsed time will continue to be displayed after the alarm. In Timer Mode time will count down from the specified time. An alarm will go off when the count down reaches zero. In Alarm Mode the time you specify will trigger an alarm every day at the specified time.

Format Display - The current Time Format of the Digital Watch is shown in the Format Display. The Time Formats are: 24hour, 12 hour and none.

Hour Edit - Use your keyboard and the Hour Edit control to set the hour for the Digital Watch. The minimum and maximum number of hours that you can enter depends on the Mode of the Digital Watch and the Time Format (i.e., 24hr Clock 0, 23; 12hr Clock 1, 12; Stopwatch 0, 99; Timer 0, 99; 24hr Alarm 0, 23; 12hr Alarm 1, 12). Don't forget to toggle the [Set Button](#) off when you've finished entering the time.

Minute Edit - Enter the desired number of minutes for the Digital Watch into the Minute Edit control. The minimum and maximum number of minutes that you can enter depends on the Mode of the Digital Watch (i.e., Clock 0, 59; Stopwatch 0, 99; Timer 0, 99; Alarm 0, 59). Don't forget to toggle the [Set Button](#) off when you've finished entering the time.

Second Edit - Specify the number of seconds for the time alarm using the Second Edit control. The minimum and maximum number of seconds that can be entered depends on the Mode of the Digital Watch (i.e., Clock 0, 59; Stopwatch 0, 99; Timer 0, 99; Alarm 0, 59). Don't forget to toggle the [Set Button](#) off when you've finished entering the time.

AM / PM Edit - Use the AM / PM Edit control to specify the 12 hour time format. The AM / PM Edit control serves no function when the Digital Watch Time Format is not set to 12hr.

Start Button - The Start Button is disabled for this application.

Stop Button - The Stop Button is disabled for this application.

Mode Button - Use the Mode Button to cycle through and select the desired Digital Watch Mode. The Modes are: Clock, Stopwatch, Timer, Alarm. In Clock Mode the time you specify will trigger an alarm that day at the specified time. In Stopwatch Mode an alarm will sound when the elapsed time is greater than the specified time. The elapsed time will continue to be displayed after the alarm. In Timer Mode time will count down from the specified time. An alarm will go off when the count down reaches Zero. In Alarm Mode the time you specify will trigger an alarm every day at the specified time.

Format Button - When the [Mode Button](#) is in Clock or Alarm Mode, the Format Button toggles the time between 24hr and 12hr format. The Format Button has no effect when the [Mode Button](#) is in Stopwatch or Timer Mode.

Time Edit - You can specify time directly with your keyboard using the Time Edit control. The format for specifying the time is or hh:mm:ss" AM or PM Mode. The Mode is one of the following: Clock, Stopwatch, Timer, Alarm. AM or PM is only needed in 12hr time format.

View Button - Click the View Button to open the Time Alarm View window. From the Time Alarm View window, previous time alarms can be viewed and deleted.

Cancel Button - The Cancel Button closes the window. It should be used after you have made changes and accepted them with the OK Button. You should also use the Cancel Button to close the window when you don't want to accept any changes that you have made.

Help Button - Use the Help Button to open context sensitive help for this window. Context sensitive help allows you to obtain information on each particular control used in the window. You may also access the entire contents of the Ticker help system.

OK Button - Use the OK Button to accept the changes that you have made. The window remains open to allow additional input. Use the Cancel Button to close the window after all input is complete.

Time Assist

Use the hypergraphic screen image to select help for the actual controls of the window. Move the mouse to the control for which you want help. A hand indicates that specific help is available. Click the mouse and information particular to that control will be provided.



Set Button - Click the Set Button to toggle on and off the Set Mode of the Digital Watch. The Set Mode must be on in order to change the time on the Digital Watch. When the Set Mode is on, the Set Button is shown in a latched state. In the latched state the Set Button loses its 3-D shadowing and has a dark border. When the Set Mode is off, the Set Button is shown in an up state with 3-D shadowing (as shown). To set the time you use the segment display ([Hour Edit](#), [Minute Edit](#), [Second Edit](#) and if necessary the [AM / PM Edit](#)). NOTE: The [Format Button](#) and the [Mode Button](#) are disabled when the Set Button is on.

Reset Button - The Reset Button sets the time in the Digital Watch to the current time when the Digital Watch Mode is in Clock Mode.

Mode Display - The current Mode of the Digital Watch is shown in the Mode Display. For this application only the Clock Mode is supported.

Format Display - The current Time Format of the Digital Watch is shown in the Format Display. The Time Formats are: 24hour, 12 hour and none.

Hour Edit - Use the keyboard and the Hour Edit control to set the hour for the Digital Watch. The minimum and maximum number of hours that you can enter depends on the Time Format (i.e., 24hr Clock 0, 23; 12hr Clock 1, 12). Don't forget to toggle the [Set Button](#) off when you've finished entering the time.

Minute Edit - Enter the desired number of minutes for the time alarm into the Minute Edit control. The number of minutes that you can enter is 0 minutes minimum and 59 minutes maximum. Don't forget to toggle the [Set Button](#) off when you've finished entering the time.

Second Edit - Specify the number of seconds for the time alarm using the Second Edit control. The number of seconds that can be entered is 0 seconds minimum and 59 seconds maximum. Don't forget to toggle the [Set Button](#) off when you've finished entering the time.

AM / PM Edit - Use the AM / PM Edit control to specify the 12 hour time format. The AM / PM Edit control serves no function when the Digital Watch Time Format is not set to 12hr.

Start Button - The Start Button is disabled for this application.

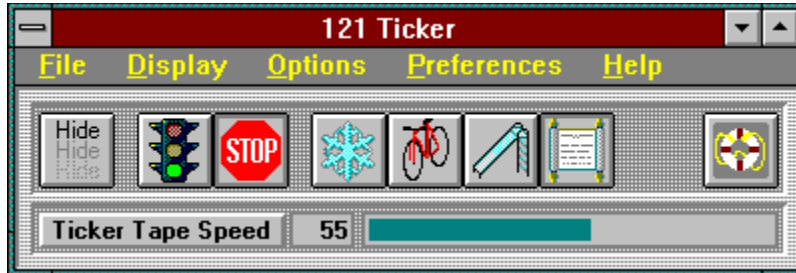
Stop Button - The Stop Button is disabled for this application.

Mode Button - For this application only the Clock Mode is supported. The Mode Button is disabled.

Format Button - The Format Button toggles the time between 24hr and 12hr format.

121 Ticker

Use the hypergraphic screen image to select help for the Ticker main window. Help is available for the toolbar and for Ticker's menu system. Move the mouse to the toolbar button or menu item for which you want help. A hand indicates that specific help is available. Click the mouse and information particular to that item will be provided. Clicking on sub menus can be used to thread through the Ticker menu system.



Hide Button - Choose the Hide Menu Item to hide the 121 Ticker Window when the Ticker Tape is active. Hide Menu Item has no effect when the Ticker Tape is not active. Hiding Ticker's main window is an alternative to iconizing Ticker; however, there is a difference. When you hide the Ticker main window, you will need a way of restoring its visibility. While hidden, Ticker will not appear on Window's Active Task List. To restore the visibility of Ticker's main window, double click on the Ticker Tape. The Hide Menu Item toggles between on and off states. If it is toggled to the on state when your settings are saved, Ticker will come up in the hidden state on future executions. Restoring visibility by double clicking on the Ticker Tape does not toggle the Hide Menu Item. If you want the Hide function toggled off, you must do so manually. Allowing the Hide function to remain set, supports automatic hiding when Ticker is started. The Hide Button is functionally equivalent to the Hide Menu Item in the [File Menu](#).

Go Button - Click the Go Button to start the ticker tape. The Go Button is functionally equivalent to the Start Display Menu Item in the [File Menu](#).

Stop Button - Use the Stop Button to stop the ticker tape. The Stop Button is functionally equivalent to the Stop Display Menu Item in the [File Menu](#).

Freeze Button - The Freeze Button pauses the ticker tape on the current message. Only the current message is displayed. The frozen message will continue to be updated by Ticker. The Freeze Button is functionally equivalent to the Freeze Menu Item in the [Ticker Mode Menu](#).

Cycle Button - Select the Cycle Button to set the Ticker Tape display mode to Cycle. In Cycle Mode the Ticker cycles through all of the selected messages. Each message is displayed centered in the Ticker Tape window. The Cycle Button is functionally equivalent to the Cycle Menu Item in the [Ticker Mode Menu](#).

Slide Button - Choose the Slide Button to set the Ticker Tape display mode to Slide. In Slide Mode the Ticker cycles through all of the selected messages. Each message is animated to slide from right to left in the Ticker Tape window, pausing against the left side for viewing. The Slide Button is functionally equivalent to the Slide Menu Item in the [Ticker Mode Menu](#).

Scroll Button - The Scroll Button selects the Scroll Ticker Tape display mode reminiscent of the stock market ticker tape machine for which Ticker is named . In Scroll Mode, Ticker concatenates all of the selected messages. The messages are then scrolled from right to left in the Ticker Tape window. The Scroll Button is functionally equivalent to the Scroll Menu Item in the [Ticker Mode Menu](#). **Note: Some system configurations may exhibit screen flicker when Ticker is scrolling the Ticker Tape. It is possible for Ticker to eliminate screen flicker in some configurations by placing "vertical_retrace_wait" on the Ticker command line (see [Command Line Options](#)).**

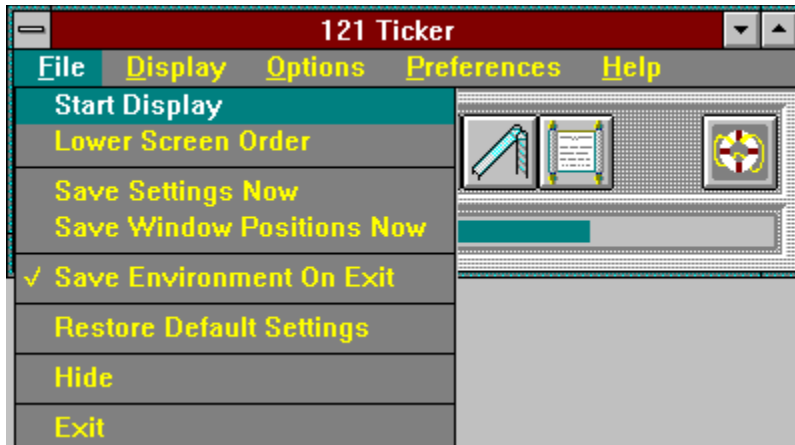
Help Button - Use the Help Button to open context sensitive help for this window. Context sensitive help allows you to obtain information on each particular control used in the window. You may also access the entire contents of the Ticker help system.

Ticker Speed Edit - Use the Ticker Speed Edit to set the speed of the Ticker Tape. The Ticker speed ranges from 1 to 100. The current speed setting is also shown in the Ticker Speed Gauge.

Ticker Speed Gauge - The Ticker Speed Gauge graphically depicts the speed of the Ticker Tape. It can also be used to set the Ticker Speed. Click anywhere in the gauge area to set the speed. The Ticker speed ranges from 1 to 100. The current speed setting is also shown in the Ticker Speed Edit.

File Menu

Use the hypergraphic screen image to select help for Ticker's menu system. Move the mouse to the menu item for which you want help. A hand indicates that specific help is available. Click the mouse and information particular to that menu item will be provided. Clicking on sub menus can be used to thread through the Ticker menu system.



Start Display Menu Item - The Start Display Menu Item is a dual menu item. The replacement menu item is the Stop Display Menu Item. These two menu items are used to start and stop the Ticker Tape. When the Ticker Tape is not active, the Start Display Menu Item will be visible. Clicking on the Start Display Menu Item will activate the Ticker Tape. When the Ticker Tape is active, the Stop Display Menu Item will be visible. Clicking on the Stop Display Menu Item will deactivate the Ticker Tape. The Start Display Menu Item is functionally equivalent to the Go Button in the toolbar of the [121 Ticker Window](#). The Stop Display Menu Item is functionally equivalent to the Stop Button in the toolbar of the [121 Ticker Window](#).

Lower Screen Order Menu Item - The Lower Screen Order Menu Item is a dual menu item. The replacement menu item is the Raise Screen Order Menu Item. These two menu items are used to lower and raise the visibility of the Ticker Tape display relative to the other windows on the screen. When the screen order is raised, no other windows on the screen will be allowed to obscure the visibility of the Ticker Tape. When the screen order is lowered, the Ticker Tape will not restrict the visibility of the other windows on the screen. The normal state of Ticker is to display the Ticker Tape on top of other windows. However, when you open a Ticker dialog box or Ticker help, Ticker no longer displays the Ticker Tape on top. You should use the Lower Screen Order Menu Item and Raise Screen Order Menu Item if you want to override this scenario.

Save Settings Now Menu Item - Select the Save Settings Now Menu Item to save your settings to the Ticker Data File (ticker.dat). The saved settings will be used by Ticker the next time it is run. The settings saved include: current menu settings, display settings, limits, drive options, reminders and preferences.

Save Window Position Now Menu Item - Select the Save Window Position Now Menu Item to save the positions of the Ticker windows to the Ticker Data File (ticker.dat). The positions of all Ticker windows are saved. **NOTE:** Ticker updates the window positions after the window is closed, so you should click the Save Window Position Now Menu Item after you close the window.

Save Environment On Exit Menu Item - The Save Environment On Exit Menu Item will direct Ticker to automatically save all of your settings and window positions each time it exits. Selecting the Save Environment On Exit Menu Item is the same as selecting the Save Settings Now Menu Item and the Save Window Position Now Menu Item when you exit Ticker.

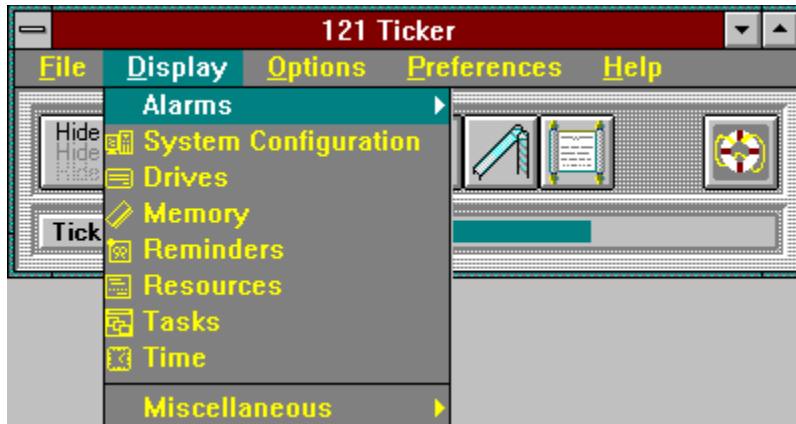
Restore Default Settings Menu Item - Click on this menu item to restore all of Ticker's settings to their default values. **NOTE: Choosing the Restore Default Settings Menu Item will erase all of your settings.**

Hide Menu Item - Chose the Hide Menu Item to hide the [121 Ticker Window](#) when the Ticker Tape is active. Hide Menu Item has no effect when the Ticker Tape is not active. Hiding Ticker's main window is an alternative to iconizing Ticker; however, there is a difference. When you hide the Ticker main window, you will need a way of restoring its visibility. While hidden, Ticker will not appear on Window's Active Task List. To restore the visibility of Ticker's main window, click on the Ticker Tape while holding the CONTROL Key down. The Hide Menu Item toggles between on and off states. If it is toggled to the on state when your settings are saved, Ticker will come up in the hidden state on future executions. Restoring visibility by double clicking on the Ticker Tape does not toggle the Hide Menu Item. If you want the Hide function toggled off, you must do so manually. Allowing the Hide function to remain set supports automatic hiding when Ticker is started. The Hide Menu Item is functionally equivalent to the Hide Button in the toolbar of the [121 Ticker Window](#).

Exit Menu Item - Clicking on the Exit Menu Item exits Ticker.

Display Menu

Use the hypergraphic screen image to select help for Ticker's menu system. Move the mouse to the menu item for which you want help. A hand indicates that specific help is available. Click the mouse and information particular to that menu item will be provided. Clicking on sub menus can be used to thread through the Ticker menu system.



System Configuration Menu Item - Selecting the System Configuration Menu Item activates the display of messages describing your system configuration. A check mark appearing next to the System Configuration Menu Item indicates that the display is on. When you see the System Configuration Icon next to the System Configuration Menu Item, the display is off. Messages include: Windows version, DOS version, CPU type, Coprocessor presence, Windows mode and Windows memory paging status.

Drives Menu Item - The Drives Menu Item activates the display of messages describing the hard drives in your system. A check mark appearing next to the Drives Menu Item indicates that the display is on. When you see the Drives Icon next to the Drives Menu Item, the display is off. You should select the drive information that you want displayed before you toggle the display on. Drive options are specified using the [Drive Options Window](#).

Memory Menu Item - Click the Memory Menu Item to activate the display of a message indicating the amount of free memory available in your system. A check mark appearing next to the Memory Menu Item indicates that the display is on. When you see the Memory Icon next to the Memory Menu Item, the display is off.

Reminders Menu Item - Selecting the Reminders Menu Item activates the display of reminder messages for events that you have specified. A check mark appearing next to the Reminders Menu Item indicates that the display is on. When you see the Reminders Icon next to the Reminders Menu Item, the display is off. You should create reminders that you want displayed before you toggle the display on. Reminders are specified using the [Reminder Window](#).

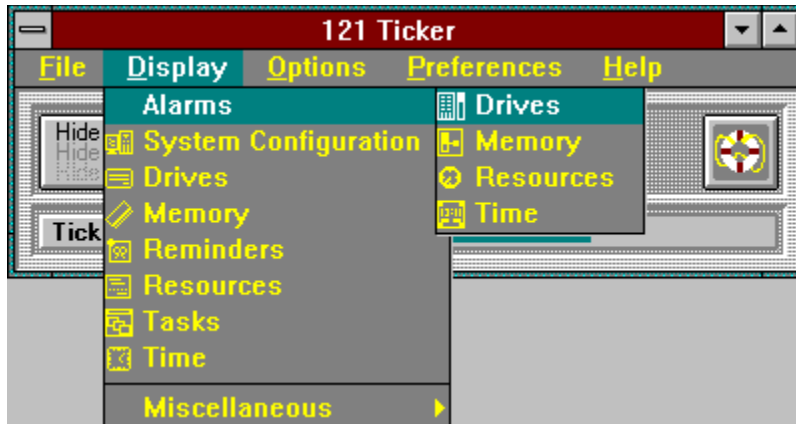
Resources Menu Item - Click the Resources Menu Item to activate the display of messages showing the amount of free resources available in your system. GDI (Graphics Device Interface) and user resource levels are displayed. A check mark appearing next to the Resources Menu Item indicates that the display is on. When you see the Resources Icon next to the Resources Menu Item, the display is off.

Tasks Menu Item - The Tasks Menu Item activates the display of messages showing the top level tasks active in your system. A check mark appearing next to the Tasks Menu Item indicates that the display is on. When you see the Tasks Icon next to the Tasks Menu Item, the display is off.

Time Menu Item - Clicking the Time Menu Item activates the display of time and date messages . A check mark appearing next to the Time Menu Item indicates that the display is on. When you see the Time Icon next to the Time Menu Item, the display is off.

Alarm Menu

Use the hypergraphic screen image to select help for Ticker's menu system. Move the mouse to the menu item for which you want help. A hand indicates that specific help is available. Click the mouse and information particular to that menu item will be provided. Clicking on sub menus can be used to thread through the Ticker menu system.



Drives Menu Item - The Drives Menu Item toggles on or off the display of drive alarm messages. A check mark appearing next to the Drives Menu Item indicates that the display is on. When you see the Drive Alarm Icon next to the Drives Menu Item, the display is off. You should set alarm conditions before you toggle the display on. Drive alarms are specified using the [Drive Space Alarms Window](#).

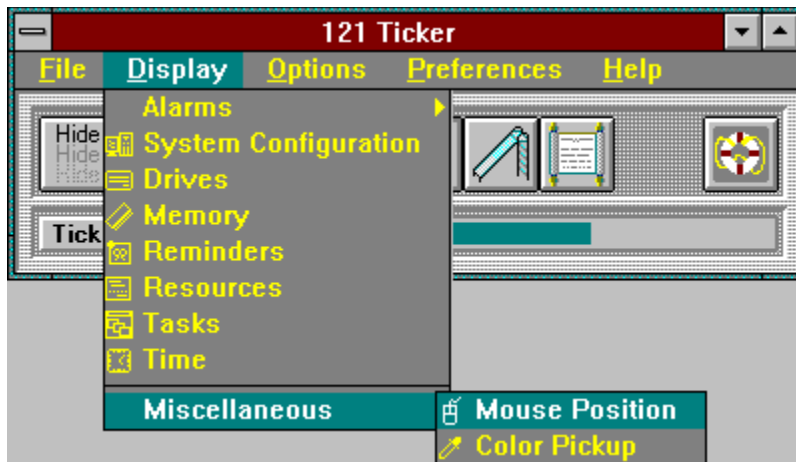
Memory Menu Item - Click on the Memory Menu Item to toggle on or off the display of the memory alarm message. A check mark appearing next to the Memory Menu Item indicates that the display is on. When you see the Memory Alarm Icon next to the Memory Menu Item, the display is off. You should set alarm conditions before you toggle the display on. A memory alarm is specified using the [Memory Alarm Window](#).

Resources Menu Item - Selecting the Resources Menu Item toggles on or off the display of the resource alarm messages. A check mark appearing next to the Resources Menu Item indicates that the display is on. When you see the Resources Alarm Icon next to the Resources Menu Item, the display is off. You should set alarm conditions before you toggle the display on. Resource alarms are specified using the [Resource Alarms Window](#).

Time Menu Item - Clicking the Time Menu Item to toggles on or off the display of time alarm messages. A check mark appearing next to the Time Menu Item indicates that the display is on. When you see the Time Alarm Icon next to the Time Menu Item, the display is off. You should set alarm conditions before you toggle the display on. A time alarm is specified using the [Time Alarms Window](#).

Miscellaneous Menu

Use the hypergraphic screen image to select help for Ticker's menu system. Move the mouse to the menu item for which you want help. A hand indicates that specific help is available. Click the mouse and information particular to that menu item will be provided. Clicking on sub menus can be used to thread through the Ticker menu system.

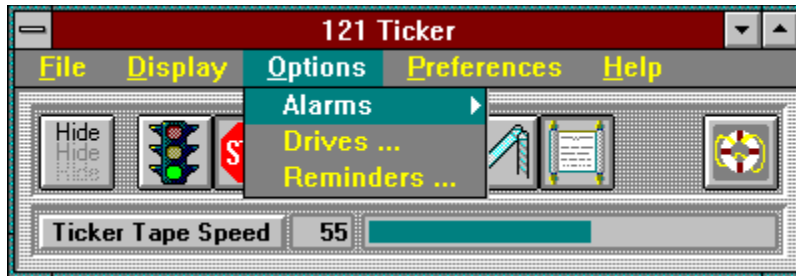


Mouse Position Menu Item - Click the Mouse Position Menu Item to activate the display of the mouse position in a Ticker Tape message. A check mark appearing next to the Mouse Position Menu Item indicates that the display is on. When you see the Mouse Position Icon next to the Mouse Position Menu Item, the display is off.

Color Pickup Menu Item - Click the Color Pickup Menu Item to activate the display of the screen color at the mouse position in a Ticker Tape message. A check mark appearing next to the Color Pickup Menu Item indicates that the display is on. When you see the Color Pickup Icon next to the Color Pickup Menu Item, the display is off.

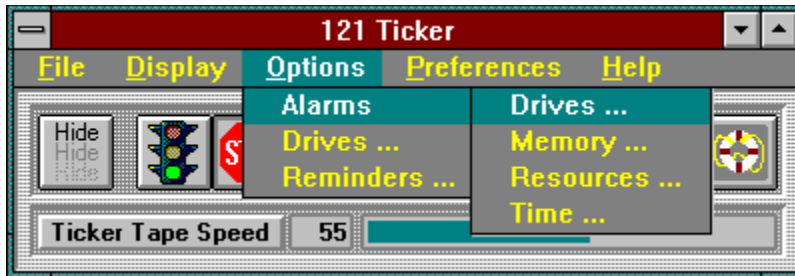
Options Menu

Use the hypergraphic screen image to select help for Ticker's menu system. Move the mouse to the menu item for which you want help. A hand indicates that specific help is available. Click the mouse and information particular to that menu item will be provided. Clicking on sub menus can be used to thread through the Ticker menu system.



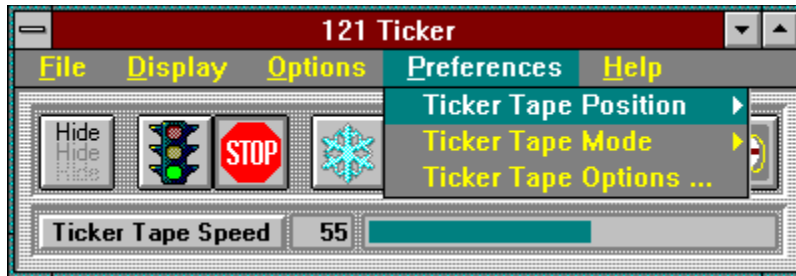
Alarms Menu

Use the hypergraphic screen image to select help for Ticker's menu system. Move the mouse to the menu item for which you want help. A hand indicates that specific help is available. Click the mouse and information particular to that menu item will be provided. Clicking on sub menus can be used to thread through the Ticker menu system.



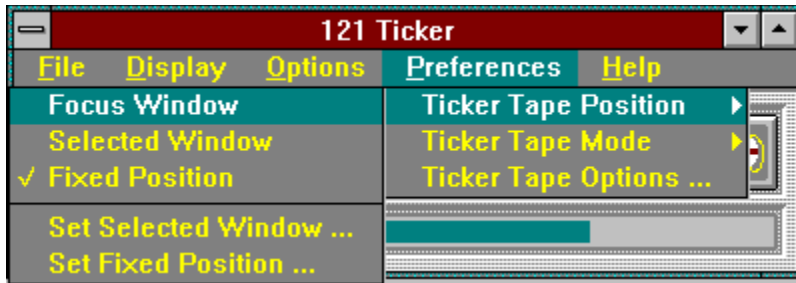
Preferences Menu

Use the hypergraphic screen image to select help for Ticker's menu system. Move the mouse to the menu item for which you want help. A hand indicates that specific help is available. Click the mouse and information particular to that menu item will be provided. Clicking on sub menus can be used to thread through the Ticker menu system.



Ticker Position Menu

Use the hypergraphic screen image to select help for Ticker's menu system. Move the mouse to the menu item for which you want help. A hand indicates that specific help is available. Click the mouse and information particular to that menu item will be provided. Clicking on sub menus can be used to thread through the Ticker menu system.



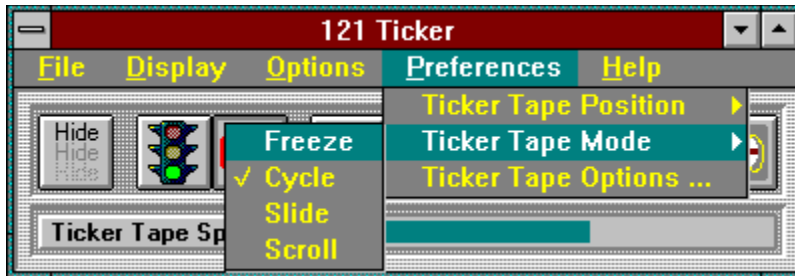
Focus Window Menu Item - Click the Focus Window Menu Item to set the position of the Ticker Tape to reside in the title area of the top level window which has input focus. As the focus changes from one window to another, the position of the Ticker Tape will change accordingly. In cases where there is temporarily no window which has input focus, the Ticker Tape will be invisible.

Selected Window Menu Item - Click the Selected Window Menu Item to set the position of the Ticker Tape to reside in the title area of a selected window. To select the host window, use the Set Selected Window Menu Item to open the [Select Ticker Tape Window](#).

Fixed Position Menu Item - Click the Fixed Position Menu Item to set the position of the Ticker Tape to reside in a fixed location on the screen. To select the fixed position, use the Set Fixed Window Menu Item to open the [Set Fixed Ticker Tape](#) window.

Ticker Mode Menu

Use the hypergraphic screen image to select help for Ticker's menu system. Move the mouse to the menu item for which you want help. A hand indicates that specific help is available. Click the mouse and information particular to that menu item will be provided. Clicking on sub menus can be used to thread through the Ticker menu system.



Freeze Menu Item - Click the Freeze Menu Item to set the Ticker Tape display mode to Freeze. In Freeze Mode the Ticker Tape freezes (pauses) on the current message. The frozen message will continue to be updated by Ticker. The Freeze Menu Item is functionally equivalent to the Freeze Button in the toolbar of the [121 Ticker Window](#).

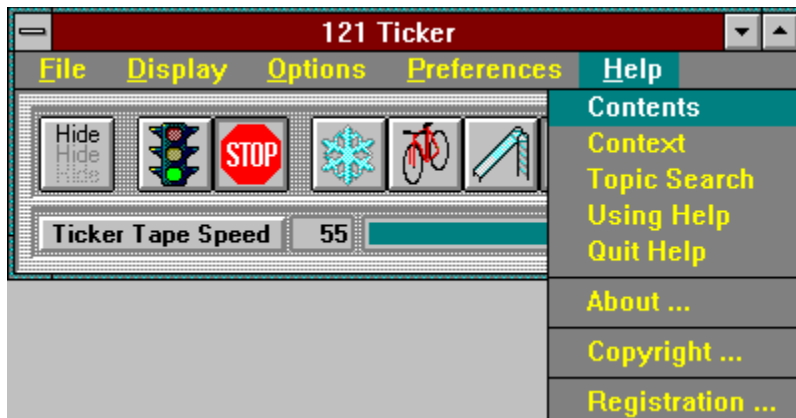
Cycle Menu Item - Select the Cycle Menu Item to set the Ticker Tape display mode to Cycle. In Cycle Mode the Ticker cycles through all of the selected messages. Each message is displayed centered in the Ticker Tape window. The Cycle Menu Item is functionally equivalent to the Cycle Button in the toolbar of the [121 Ticker Window](#).

Slide Menu Item - Choose the Slide Menu Item to set the Ticker Tape display mode to Slide. In Slide Mode the Ticker cycles through all of the selected messages. Each message is animated to slide from right to left in the Ticker Tape window, pausing against the left side for viewing. The Slide Menu Item is functionally equivalent to the Slide Button in the toolbar of the [121 Ticker Window](#).

Scroll Menu Item - The Scroll Menu Item selects the Scroll Ticker Tape display mode reminiscent of the stock market ticker tape machine for which Ticker is named . In Scroll Mode Ticker concatenates all of the selected messages. The messages are then scrolled from right to left in the Ticker Tape window. The Scroll Menu Item is functionally equivalent to the Scroll Button in the toolbar of the [121 Ticker Window](#). **Note: Some system configurations may exhibit screen flicker when Ticker is scrolling the Ticker Tape. It is possible for Ticker to eliminate screen flicker in some configurations by placing "vertical_retrace_wait" on the Ticker command line (see [Command Line Options](#)).**

Help Menu

Use the hypergraphic screen image to select help for Ticker's menu system. Move the mouse to the menu item for which you want help. A hand indicates that specific help is available. Click the mouse and information particular to that menu item will be provided. Clicking on sub menus can be used to thread through the Ticker menu system.



Contents Menu Item - Click on the Contents Menu Item to activate the Ticker Help System.
The Contents Menu Item will enter the Help system at the Table of Contents.

Context Menu Item - Choose the Context Menu Item to activate the Context portion of the Ticker Help System. In the Context portion you can walk through the actual menus and windows of Ticker.

Topic Search Menu Item - Select the Topic Search Menu Item to activate the Topic Search section of the Ticker Help System. In the Topic Search section you can get help based upon keywords.

Using Help Menu Item - Clicking the Using Help Menu Item activates help for the Ticker Help System. In the Using Help section you can get help on how to use Help.

Quit Help Menu Item - Use Quit Help to deactivate the Ticker Help System. You should quit Help after you are finished so that Windows can terminate Windows Help. Using the Quit Help Menu Item when finished with Ticker Help will reactivate the Put Ticker Tape on Top feature.

About Menu Item - When selected the About Menu Item displays the [About](#) window.

Copyright Menu Item - Use the Copyright Menu Item to display the [Copyright](#) window

Registration Menu Item - Click on the Registration Menu Item to find out [How To Register Ticker](#).

