

# Windows System Backup Version 3.0



Windows System Backup (c) 1994 by John N. Hodges All Rights Reserved

[Introduction](#)

[Getting Started](#)



[Backup Button](#)



[Restore Button](#)



[Print Button](#)



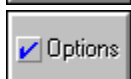
[Edit Button](#)



[Path Button](#)



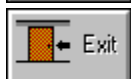
[Custom Button](#)



[Options Button](#)



[About Button](#)



[Exit Button](#)

[INI Editor](#)

[Version History](#)

[Other Programs by Me](#)

[The Shareware Concept](#)

[How to Order](#)

[How to Register](#)

[Order Form](#)

# Introduction



Windows System Backup is a small, Windows 3.x utility designed to backup your important Windows files such as \*.ini, \*.pif, \*.grp as well as your autoexec.bat and config.sys files. This newest version will also allow you to specify any five extensions for backing up from any directory. This is convenient for backing up any type of file that you want. It could even be used as a "Poorman's" backup program. It will also print out four of your system files, win.ini, system.ini, autoexec.bat and config.sys. In addition, it will allow you to edit any of the \*.ini or \*.pif files in your Windows directory using a Windows text editor of our choice.

It is quite simple in function, yet it can save the day. I thought of the original version one day when my Windows 3.0 crashed (buy Windows 3.1 if you haven't already) and I had to reinstall it. All the work I had put into getting my desktop just right was gone, and it took me quite a while to restore things. Realizing that all of that information was in a few easily backed up files, I immediately did so. Finding it a bit cumbersome to use DOS or File Manager, I wrote this utility to make easy such a task. From there it has expanded to include other useful capabilities. I hope that it proves to be something that you can use (and want to pay for).

[Getting Started](#)

[About](#)

## Getting Started

To run Windows System Backup, you will need to place the file BWCC.DLL somewhere on your path, probably the Windows directory (You may already have a copy, and if so, stick with the one with the most recent date).

The working of the program should be self-explanatory. Simply select what you want to do and do it. (Tough instructions, huh?). See your Windows manual for instructions on setting up System Backup in Program Manager. System Backup does create a file called 'Sysback.dat' in the directory in which it was started, and so if you move Sysback.exe around, please ensure that sysback.dat goes with it. Nothing bad will happen if you leave it behind, but you will lose the information about the files that you have backed up.

# About Dialog Box



This button brings up the "About" dialog box. It gives the current version of System Backup as well as the obligatory copyright notice. This program was written by me, Nick Hodges. I am a Lieutenant in the United States Navy and am currently attending the Naval Postgraduate School in Monterey, California, working towards a Masters of Science in Information Technology Management. I will be attending there until September of 1995. I don't know my next duty station. If you are reading this and it is after the above date, you undoubtedly have an older version (at least one without my current address!!!) Look for the latest one on CompuServe or America Online and register that!

I wrote this program first in Turbo Pascal for Windows and then migrated it over to Borland Pascal 7.0. Don't believe what they say about C++ being the only language to write Windows programs, as Pascal is a very powerful and well structured language. So far I am completely self taught and am pretty happy with the results. I really enjoy programming and harbour a secret desire to one day make a living doing it. (I have a few years left in the Navy to do first!!)

Thanks to Jim Lee for diligently testing each of my early versions and giving me the ideas for most of the features in this program.

This program may be distributed by any Shareware reseller as long as only a reasonable charge is asked for the distribution disks. SYSBCK??.ZIP itself or any of it's components may not be sold for any price. It may be freely distributed as long as it is not altered in any way and this Help file and the executable file are included with it.

[Nick Hodges](#)

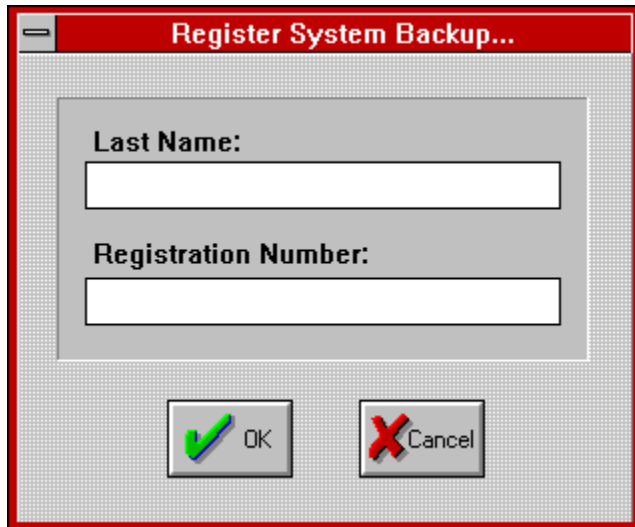
[How to Register](#)

[Order Form](#)

Post Office Box 221096  
Carmel, CA 93922  
TEL: 1-408-393-1547  
FAX: 1-408-393-9626  
Compuserve: 71563,2250  
America Online: NHodges

# Registration Information

To register System Backup, select the System Menu by clicking on the little box in the upper left corner of the main dialog. This will bring up the Registration box.



The image shows a screenshot of a Windows-style dialog box titled "Register System Backup...". The dialog has a red title bar. Inside, there is a grey background with two text input fields. The first field is labeled "Last Name:" and the second is labeled "Registration Number:". Below the fields are two buttons: "OK" with a green checkmark icon and "Cancel" with a red X icon.

Enter the name and number exactly as sent. Once registered, the program won't pester you one bit. Please contact me if you have any trouble registering System Backup.

[How to Order](#)

[Shareware Information](#)

[Order Form](#)

## How to Order

To obtain a registration number for Windows System Backup, send \$5 to:

[Nick Hodges](#)

PO Box 221096

Carmel, CA 93922

TEL: 1-408-393-1547

FAX: 1-408-393-9626

Compuserve: 71563,2250

America Online: NHodges

Please send money in US\$ or a draft payable in US\$.

You will receive your registration number promptly. Registering gives you the right to operate System Backup on one computer at a time. You should not have System Backup running on more than one computer with the same registration number. If desired, site licensing is available.

[Order Form](#)

[Shareware Information](#)

# Order Form

## Select "File/Print Topic" from the menu to print an order form

Please send your check or money order (in US Dollars) to:

Nick Hodges  
P.O. Box 221096  
Carmel, CA 93922  
TEL: 1-408-393-1547  
FAX: 1-408-393-9626  
American Online: NHodges  
Compuserve: 71563,2250

Name: \_\_\_\_\_

Company: \_\_\_\_\_

Address: \_\_\_\_\_

City: \_\_\_\_\_ State: \_\_\_\_\_ ZIP: \_\_\_\_\_

Country: \_\_\_\_\_ TEL: \_\_\_\_\_ FAX: \_\_\_\_\_

Online: \_\_\_\_\_

Windows <u>System Backup</u> .....	\$5.00	US x	___	unit(s) =	\$	_____
Windows Disk Information.....	\$1.00	US x	___	unit(s) =	\$	_____
Windows Wave Shell.....	\$3.00	US x	___	unit(s) =	\$	_____
Windows Start.....	\$3.00	US x	___	unit(s) =	\$	_____
		Add \$0.50 for 3.5" disk			\$	_____
Shipping & Handling (Only if ordering latest version):						
Within United States.....	\$ 2.00					
International.....	\$ 5.00				\$	_____
		Subtotal:			\$	_____
		California residents add 7.5% Sales Tax:			\$	_____
		TOTAL:			\$	_____

Please send only US Cash or checks payable in US Dollars!



## Shareware Information

I am distributing this program as shareware. Take a look at, use it, and if you like it and want to keep using it, please send me five dollars. That's really not much at all. I hate looking at a shareware program that is cool but is way over priced. This one is not. I am relying on your integrity. I won't lay any big guilt trips on you, but don't use shareware if you don't pay for it. It's only fair. I don't provide any support or manuals or anything beyond this help file. That would be a bit ridiculous for this program, don't you think? Sending in money gives you peace of mind, though. Pretty nice thing to have. Plus, I might just write that specific little utility you wished someone would write if I get a reasonable amount of support.

I distribute this program 'as is' with no guarantees of performance or compatibility with anything at any time. I won't be held liable for anything that gets broken, damaged, or lost because of this program. Use it at your own risk.

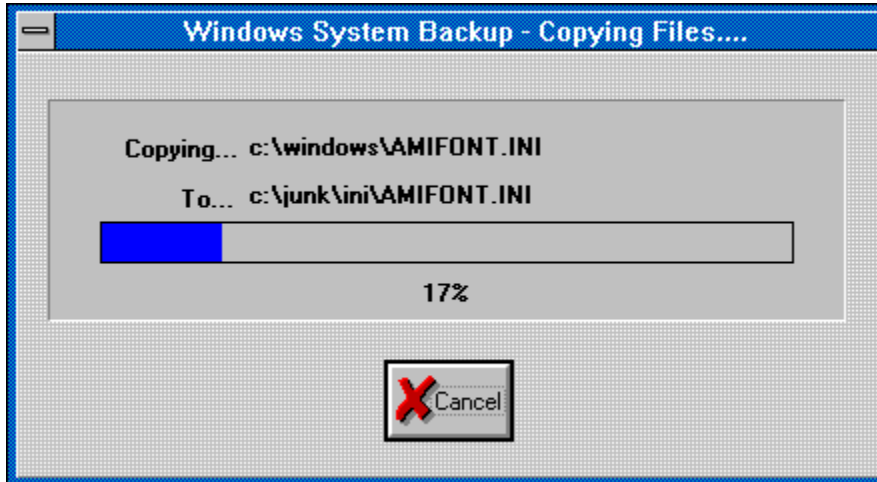
[How to Order](#)

[Order Form](#)

# Backup Button



This button will begin the backup process. The program will backup all programs from your source directory with the extensions that are checked in the main dialog box. System Backup will first check your destination directory to see if there is a possibility of overwriting any files and will ask you to say it is okay before it does so. Once it begins to backup, the Status dialog box will appear and let you know which files are being copied where.



You can cancel the process at anytime by selecting the 'Cancel' button inside the dialog. System Backup will continue copying until it is done or you cancel the operation. At the end of the backup procedure, the program will tell you how many files it copied. If you have selected the "Backup newer files only" option, this number will probably be lower than the total files in your Source Directory. You can minimize the program and it will run in the background. This version should multitask a little better than previous ones, but if you are backing up to a floppy, it will slow things down a bit. You can choose the "Exit when done backing up" option to have the program quit when it's done.

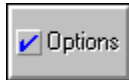
## Some Things to Note:

- n If you have selected the 'Create file-specific subdirectories' from the Options dialog box, then the Backup function will backup to subdirectories under your Destination Directory. The subdirectories will be named the same as the file extensions of the type of files being backed. For example, .ini files will be backed up to a subdirectory called \ini.
- n The program will not let you backup with invalid paths. It will account for just about any error in entering paths that I could think of except one -- spaces at the BEGINNING of a path. Please don't do that.
- n The program looks for your autoexec.bat and config.sys files in the root c: drive directory. If for some reason you have any other drive as your boot drive, edit 'SYSBACK.INI' (found in your windows directory and created by this program) to reflect your setup. You can use System Backup itself to edit that file.
- n System Backup will create a text file called "datestmp.txt" in your Destination Directory which contains the date and time that the last backup was done to that Destination Directory.
- n I figured out how to allow you to backup to more than one disk and not lose any files, so you can run on and on with this, using it to back up as much data as you like, though only from one directory. You can, then, use this as a basic backup for all your \*.doc files in Word for Windows,

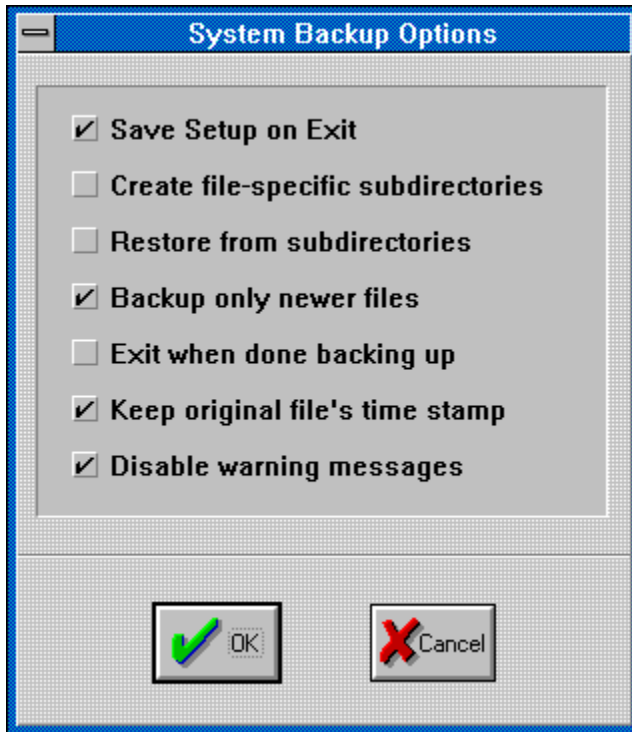
etc. Please let me know if this proves to be a problem.

Options

# Options Button



This button brings up the Options dialog box which allows you to select the options you want for running Windows System Backup. It provides you with five options:



## Save Setup on Exit:

This Checkbox allows you to save the current settings for the next session. This makes it easy to backup exactly what you want quickly each time you run Windows System Backup

## Create file-specific Subdirectories

If you select this option, System Backup will create subdirectories from your Destination Directory that are specific to the file type being backed up. For instance, if your Destination Directory is c:\backup, then System Backup will backup the \*.ini files to the directory c:\backup\ini, the \*.grp files to c:\backup\grp, etc. System Backup will create the subdirectories for you if necessary.

## Restore from Subdirectories

Select this if the files you want to restore have been previously backed up by System Backup using the above option. This lets System Backup know the correct source of the files you want restored.

## Backup Only Newer Files

Selecting this option will make your backups run much more quickly. When it backs up your files, System Backup will create a file called 'sysback.dat' which will store the names and time stamps of all the files you have backed up. If you choose to backup only newer files, System Backup will only backup those files whose time stamps are newer than the previously backed up version. It will still scan through all the files found, but only actually backup newer files. System Backup remembers the exact path name of each file, so if they are moved, they will be backed up again.

## Exit when done backing up

Selecting this option will cause System Backup to exit immediately upon completing the backup process.

### **Keep original file's time stamp**

Selecting this option will copy the files to your Destination Directory with their original time stamp on them. You may want to keep that time stamp on your files, particularly if you are backing up executables, DLL's or similar files, as time stamp on those files are often used to determine version numbers, etc. You may not want the original time stamp on, say, your \*.ini files as you may wish to know the date that a specific file was actually backed up. Leaving this option unselected will allow you to do that. Selecting it will keep the files time stamp from the Source Directory.

### **Disable warning messages**

Selecting this option will disable most of the warning messages in System Backup including:

- n warning you that you are about to overwrite previously backed up files
- n warning you that restore will copy over all duplicate files in your source directory
- n checking to be sure you want to delete a file in the Edit dialog box
- n telling you that the INI editor will not, because of the unusual nature of the SYSTEM.INI file, use the INI editor to edit that file (it will default to your text editor)..

It will not stop System Backup from pestering you about strange things you do like making your source and destination directories the same!!

## Restore Button



The Restore function will allow you quickly to restore your backed up files. It will copy the files currently selected from your Destination Directory to your Source Directory. If the data is backed up in subdirectories using System Backups subdirectory option, you must tell System Backup to look for the files in those subdirectories using the Options Box.

[Options](#)

# Print Button



This button brings up the print dialog box. Select the choices below for more information on each.



[Select Printer](#)



[Setup Printer](#)

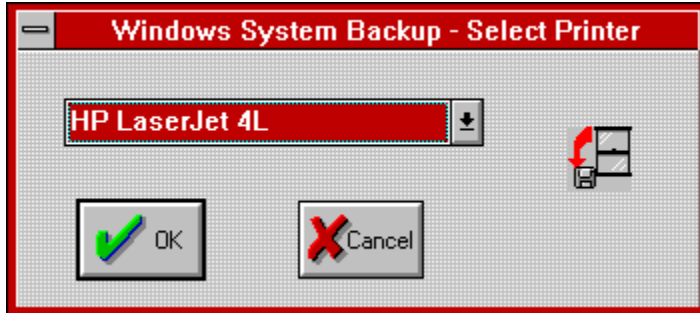
## Some Things to Note:

- n Windows System Backup should print on any printer. It checks your win.ini file for the current printer and uses those parameters. It also allows you to select any printer driver that you wish to choose. If anyone has any trouble with printing, let me know. I don't anticipate any problems.
- n For those of you with very long lines in your system files, this program will not print any more than 80 characters on a line. Sorry.
- n System Backup looks for your win.ini and system.ini files in the directory that Windows itself is in. If they are not there, you will have to move them there to take advantage of the printing capabilities!

## Printer Select Button



This button brings up the Printer select box which allows you to select from the various printer drivers you have installed. The Select Printer Dialog box is shown below.



The drop down box should contain all of the printer drivers installed on your system. You may select any printer as desired.

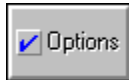


## Setup Button

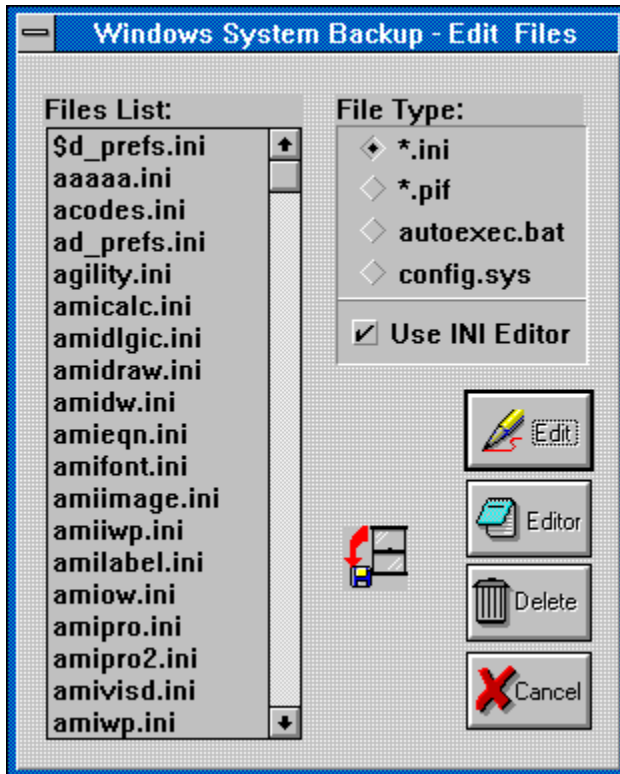


This button brings up the Printer Setup dialog box that is built in to your Windows Printer Driver. The dialog box will be printer dependent and they will vary from printer to printer. Consult your printer manual or the Windows manual for more information on configuring your printer.

# Edit Button



This button brings up the 'Edit' dialog box. From this dialog box you can edit a \*.INI file, a \*.PIF file or your autoexec.bat and config.sys files. The Edit Box is shown below.



Use the radio buttons to select the type of file that you want to edit and then select the filename from the listbox. You can double click on a filename to select it.

Select the 'Use INI Editor' Check box to use the built in INI editor to edit your files.

The Editor button allows you to select a text editor. You can enter the path to any Windows text editor, though the program must be able to take a file name as a parameter. Normally, Windows Notepad will work fine and is the default.

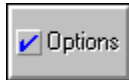
- n Note that System Backup assumes that the PIF editor is somewhere along your path. (It is normally in your Windows directory.
- n The Delete button will always confirm your deletes and will not let you delete your autoexec.bat or config.sys files.

[Ini Editor](#)

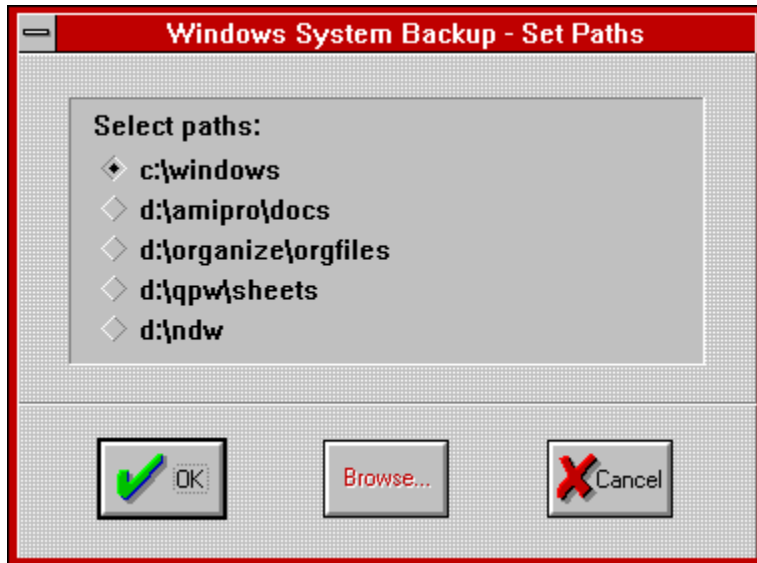
## INI Editor

The INI editor allows you to quickly and easily edit your \*.ini files without having to hassle with a text editor. The INI editor will allow you to edit or delete any portion of any \*.ini file found in your Windows directory. The two list boxes hold the sections and keys respectively, and the edit box holds the values for the selected key. Only a value can be edited directly. This helps keep editing simple and error free, as the sections and keys have to be exactly as their programs expect them. Sections and Keys can be added using the 'Add' key. Sections and keys can be deleted using the respective 'Delete' key. The INI editor will always prompt you for before deleting any section or key. If you make changes and decide to abandon them, the 'Cancel' button will set everything back as it was. Of course, the 'Ok' button save all your changes.

## Path Button

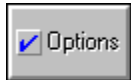


This button brings up the Path Dialog Box. From it you can set up five different directories from which to backup.

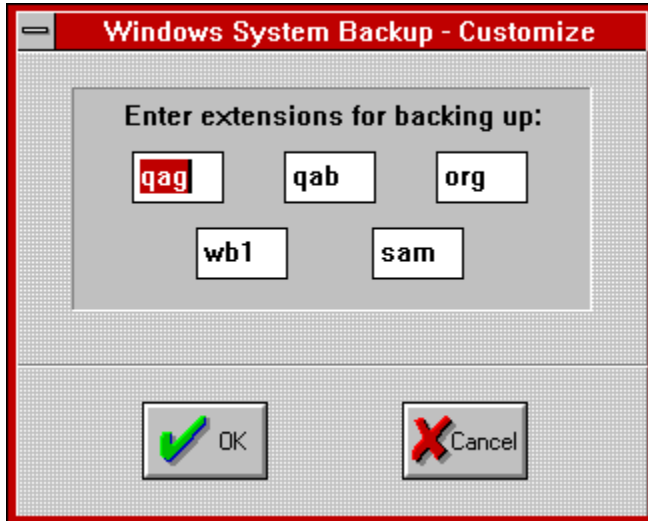


Select the desired path and use the Browse box to find the directories you want and they will automatically be added to the dropdown box in the main directory. Select Blank from the Browse Box to select no directory.

# Custom Button

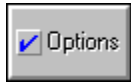


This button brings up the Custom Dialog Box.



In this box, you can enter up to five different extensions for backing up. The edit boxes will only allow you to input up to three letters, the maximum number of letters in a DOS filename. These five extensions will then show up on the main dialog box and can be selected as extensions for backing up from the source directory. Feel free to use wildcards (\*, ?) in the extension names. I back up both my \*.pas and my \*.res files (the files used to create this program) using "??S".

## Exit Button



This button will exit System Backup and save all settings if the Save Settings on Exit option is selected. What else did you think it would do?!?

Check out how the door opens when you push the button!!!

# Version History

Versions 1.0 - 1.2:

Beta versions

Version 1.3:

First version released. Included option to print \*.ini files.

Version 1.4:

Fixed a problem with Dialog Box sizing that some users were having

Version 1.5

Added ability to edit any \*.ini file using notepad and feature to customize any extension for backup.

Version 1.6 -

Added the ability to edit \*.pif files, autoexec.bat and config.sys from the program as well as cleaning up some cosmetic things with the program.

Version 1.6a - September 16, 1992

Added ability to double click on list boxes and to set your own text editor.

Version 2.0 - October 9, 1992

Added Borland Windows Custom Controls and two more custom backup extensions. Added 'Select All' and 'Deselect All' buttons for further convenience.

Version 2.1 October 21, 1992

Fixed a bug with the Custom extension back-ups, added two more custom extensions, and made 'Select All' button more convenient.

Version 2.2 November 10, 1992

Added 'Delete' button to Edit Dialog box enabling you to easily delete those unneeded \*.ini files, fixed tabs and tab order making it better for keyboard users, and added ability to save checkbox selections in main dialog.

Version 2.21 November 18, 1992

Gave the code a good tightening up and made Select/Deselect buttons switch to match your actions, i.e. says 'Select All' if you are selecting and vice versa.

Version 2.25 November 19, 1992 (I've been busy!!!)

Added the ability to set and select a variety of Source Paths

Version 2.30 February 5, 1993

Added browse capability to the Path Dialog Box

Version 2.3a March 30, 1993

Sorry, but I added some annoyware! It's a good way to keep track of registered users, and isn't too bothersome.

Version 2.3b June 21, 1993

Added cooler 'About...' box. Alt + I.

Version 2.4 September, 1993

Added this Help file and a button to call it up.

Version 3.0 January 1, 1994

Added a number of features including

- Added cool splash screen at start up
  - included an INI Editor
  - Put in buttons to edit win.ini and system.ini
  - Added percentage bar to status dialog box.
  - Restore Function
  - Options Box
    - Option to backup only newer files
    - Option to backup to file specific directories
    - Option to disable warning messages
  - creation of date stamp file in destination directory to mark backup time and date
  - added ability to keep original time stamps on backed up files
  - for you programmers, made the program completely object-oriented with no global variables
- (quite an accomplishment for a guy like me!)



## Other Programs by me:

### Windows Wave Shell

Wave Shell is quite simple -- it plays \*.wav files quickly and easily. It now supports drag-n-drop and can play wave files directly from File Manager with a simple double click! It will also call up any Wave Editor with a selected wave file. Quick, cheap, and simple!

### Windows Start

Windows Start allows you to customize your Windows start up. When placed in your startup group (or the 'run=' line of Windows 3.0), it will run specified programs on specific days. For example, since Thursday is a good day to run anti-virus software (Friday is a big day for viruses!), it will automatically run your anti-virus software on Thursdays. You might need to run a specific Excel file every Monday morning, etc. It is a good way to remind you to do certain tasks on specific days. It accepts parameters and file names for programs who run them. You can configure up to seven programs to run on any day or days of the week.

### Windows Disk Information

Disk Information monitors disk space on any or all of your hard disk and network disk drives. It can be set to monitor one disk or cycle through them all. You can vary the update time and monitor free space, used space or total disk space available.

[How to Order](#)

[Order Form](#)

# Play Button



## **There are four ways to play a wave file with Wave Shell**

- 1 Select a wave file from the list and push the 'Play' button
- 2 Double click on a wave file in the list box.
- 3 Drag one or more wave files onto the dialog box or icon.
- 4 Insert the line:

```
wav={Waveshell's Path} ^.wav
```

into the [associations] section of your Win.ini file and then double click on a wave file in File Manager.

**\$5**

Not a lot of money!!!

**\*.grp**

Files that hold all the information about your Program Manager groups.

## **\*.ini**

Files used by programs to store their initialization information

**\*.pif**

Files used by Windows to customize DOS programs run under Windows

**Alt + I.**

Hold down the 'Alt' key and push the letter 'i' when the About box is open. Cool, huh?

**autoexec.bat**

A file your computer uses to run programs and set environmental variables when your computer starts up.



## **Borland Pascal 7.0**

This is a trademark of Borland International

## **BWCC.DLL**

This file is the library that holds all the neat Borland custom controls and lets me uses all the pretty buttons.

**config.sys**

A file used by your computer at startup that runs device drivers, TSR and other such programs. Similar to the autoexec.bat function but at a lower level.

**five dollars**

Not a lot of money!

**path**

This is set in your autoexec.bat file and lists the directories you commonly use. It is a list of directories that DOS uses to look for files it can't find in the current directory.

## **System Backup**

Copyright (c) 1993 by Nick Hodges All Rights Reserved

## **Turbo Pascal for Windows**

This is a trademark of Borland International

# **United States Navy**

Hoooo Raahhh!







