

Speedoc's!

Speedoc's is like a folder from which to launch Documents. These Documents can be many different types, such as plain text TXT, Windows Write WRI documents, Windows Help HLP files or word processor DOC files. You can launch pictures or other graphics too.

Windows keeps track of what applications use the different types of documents. Windows associates that particular extension (TXT, WRI, BMP,...) with an application. Notepad uses TXT files, Write uses WRI files and Paintbrush uses BMP files. Some applications automatically associate with an extension (the spreadsheet EXCEL tells Windows that it uses files with XLS extensions). You can do this yourself from within File manager. Click on File/Associate. Enter the three letter extension in the box provided and search for an application that uses it.

Any document with an extension that's registered with Windows can be placed in Speedoc's folder. You can put the application itself in the folder if you want. You can even put another Speedoc's folder in a folder.

We are asking \$20 to register Speedoc's.
Send any comments or money to :

Dave Kurman

Digital Design Studio
53 Cemetery Road
Parkesburg, Pa. 19365.

Speedoc's!

NO WARRANTY IS PROVIDED. ANY USE BY YOU OF THE SOFTWARE IS AT YOUR OWN RISK. THE SOFTWARE IS PROVIDED FOR USE "AS IS" WITHOUT WARRANTY OF ANY KIND. DIGITAL DESIGNS DISCLAIMS ALL WARRANTIES OF ANY KIND, EITHER EXPRESS OR IMPLIED, INCLUDING, WITHOUT LIMITATION, IMPLIED WARRANTIES OF MERCHANTABILITY AND FITNESS FOR A PARTICULAR PURPOSE.

NO LIABILITY FOR CONSEQUENTIAL DAMAGES. In no event shall Digital Designs be liable for any damages whatsoever (including, without limitation, damages for loss of business profits, business interruption, loss of business information, or other financial loss) arising out of the use or inability to use this Speedocs, even if Digital Designs has been advised of the possibility of such damages. IN STATES THAT DO NOT ALLOW THE EXCLUSION OR LIMITATION OF LIABILITY FOR CONSEQUENTIAL OR INCIDENTAL DAMAGES, THIS PROGRAM **** MAY NOT **** BE USED!

Any comments, questions or other correspondence can be sent to :

Dave Kurman
Digital Design Studio
53 Cemetery Road
Parkesburg, Pa. 19365.

Speedoc's! Installation and Setup

System Requirements

Windows 3.1
VBRUN300.DLL

*VBRUN300.DLL is the Visual Basic 3.0 runtime. If you downloaded this file from a BBS or other online service, it should be available as a separate file. Be careful that you choose the VB 3.0 version. VBRUN200.DLL and VBRUN100.DLL are also online. These won't work with Speedoc's though. VBRUN300.DLL is on the disk if you got your copy from **Digital Designs**.*

Speedoc's Setup

1. Copy the following files to your X:\WINDOWS\SYSTEM\ directory:
VBRUN300.DLL
CMDIALOG.VBX *
THREED.VBX *

** Included in download archive.*

2. Create a directory (C:\SPEEDOCS) and copy the following files to that directory:

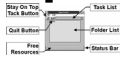
SPEEDOCS.EXE
FOLDER.FDR **
SPEEDOCS.WRI (This file that you are reading)

***FOLDER.FDR is the default folder that Speedoc's loads.*

3. Run **File Manager** from Windows. Click on **Associate** under the **File** menu. Type <FDR> in the box provided for an extension. Using the **Browse** button find **SPEEDOCS.EXE** in the directory that you placed it. You have now registered folder (FDR) files with Windows.

Create a new folder in Speedoc's. Add a few documents, and then save it. Now find the new folder in File Manager. Hold you mouse button down on the folder and drag it over to your desktop (such as **Main**, **App**, or **Accessories**) and drop it. You can change the desktop description of this folder by clicking on it once and then selecting **File** menu and **Properties**.

SpeedDoc's!



Status Bar

Along the bottom of SpeedDoc is an information bar that keeps track of memory (**MB**), resources free(%), and the time or date. By clicking on this bar, you toggle between the time and date.

The **free resources** are important for Windows 3.1 because if you kept all of the documents as icons on Program Manager, they would use these resources. SpeedDoc's can help since it keeps everything in one place to save resources and for convenience.

The **free resources** gauge is handy too for those times when you need to run a lot of applications. If they get too low, you'll need to close some of you applications.

You can hide the Status Bar from the **Edit** menu /**Options/Status_Bar_On/Off**.

Task List

The Task List keeps track of all of your currently running applications. Managing a project with several applications becomes a lot easier. Click on SpeedDoc's **Tack** to stay on top of all the windows, and then use the Task List to switch between the different applications.

Quit Button

With the menu hidden, the **Quit** button provides an easy way to exit SpeedDoc's.

Note:

You should use the Quit button or exit under the File menu to exit SpeedDoc's. If you double-click the control box (or use alt-F4 or Close from the system menu) SpeedDoc's won't be able to save your current settings. You can, however, save a Folder using File/Save- or File/SaveAs any time during a session.

Speedoc's!

Adding a Document

First you locate the document that you want using **Add** from the **Edit** menu or pressing **INS**. Then you give your own description of the document. You can come back and change the description later by using **Edit** on the **Edit** menu or by pressing **F3**.

- Corel Readme
- Corel Technical Note
- Freelance Readme
- Norton Help
- Windows Help
- ...And so on.

Deleting a Document

To delete a document from your list, select the document on the list and then use **Delete** on the **Edit** menu or press **DEL**.

Editing a Document

To edit a document from your list, select the document and then use **Edit** on the **Edit** menu or press **F3**. A dialog box pops up containing the document description from the list and the actual file name. You can edit the description from here. To change the file name, you need to first **delete** the document and then use **Add** to create a new list item.

Speedoc's!

Summary of Speedoc's features :

Documents associated with an application through File Manager can run from Speedocs.

Store an application in a Speedoc's folder.

Drag and Drop; you can drag a document from File Manager to Speedoc's.

Examine everything that is currently running under Windows by using the **Task List**. Switching to an application on the list is as simple as clicking.

Speedoc's alphabetically sorts your documents.

Help is available by pressing the menu item **File/Help** or **F1**.

Stay on Top; press the **thumb tack** to have Speedoc's remain on top.

Speedoc's window is sizable so that you can size it and place it where ever you want.

Speedoc's size and screen position are saved from session to session automatically. (You need to use Exit on the File menu or the Quit button)