

# The Rude Clock

By the Crypt Keeper  
(Sysop of the Night Gallery BBS)

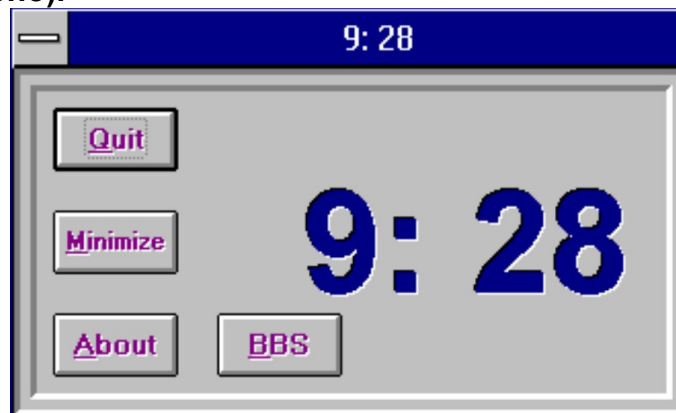
## What is Rudeclock?

Rude Clock was an experiment in taste (or lack thereof). I was working with the windows API and sounds, and found a few wave files of questionable nature.

I have always wanted a clock that actually tells you the time, but a chime can get irritating after a while. Ah! How about something to make you chuckle? Rude Clock to the rescue. Now, every 15 mins., you are prompted with the time (spoken), as well as a brief, but rude chime.

## Using Rude Clock

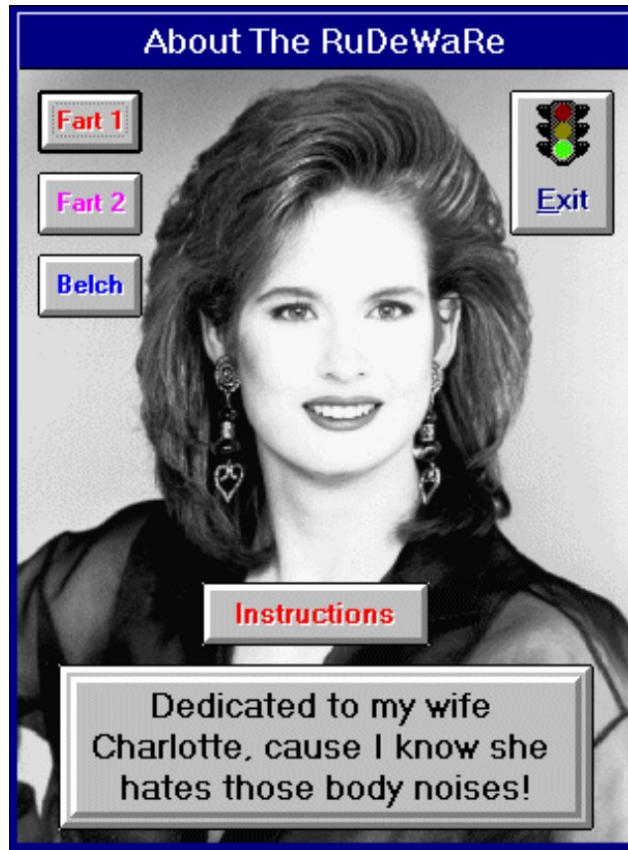
The Rude Clock required an audio card to be installed and setup under Microsoft Windows. Any sound card will do as the files are sampled 8-bit at 11,025 KHz (Mono).



Your Windows graphics mode should be set to 256 colours for some of the scanned images that appear throughtout the program.

The main screen consists of the following options :

- |          |   |
|----------|---|
| Quit     | - Exit program, and remove Rude Clock from Memory                   |
| Minimize | - Minimize the Rude Clock to an icon (still runs in the background) |
| About    | - Brings up the About menu with options and a few sound effects     |
| BBS      | - Information regarding my BBS and how to contact me                |




The about screen consists of the following options :

- |              |                                 |
|--------------|---------------------------------|
| Fart1        | - You tell me.. Sheesh!         |
| Fart2        | - Hmm, doesn't take Einstein... |
| Belch        | - Well brought up...            |
| Instructions | - This screen.                  |
| Exit         | - Return to the Rude Clock      |

The Night Gallery

**(306) 244-0129**



**The Night Gallery BBS**

A BBS for everyone featuring shareware games, graphics and custom programs. Full CD-ROM support online. 2400 - 14.4K, 24 hours

Excellent

The BBS screen consists of the following options :

Excellent      - Exit the BBS ad and return to the Rude Clock

The Rude Clock was written in Visual Basic for Windows version 3.0. A simple API call allows the system to play wave files. Do not remove the .WAV files from the Rudeclock directory or sound will cease to function.

Should you wish to change the chime sounds, change WHO.WAV and WHO\_ELSE.WAV to the sounds of choice. Simply copy your wave files into the Rudeclock directory, and rename them accordingly.

This program is RUDEWare.. Should you wish to contribute to the Crypt Keeper's efforts, you are welcome. All income from any programs created go to the expansion and maintenance of my 24 hour bbs, and into my kiddo's piggy bank..

Thank you for using Rude Clock.. Hope you enjoy it as much as I did writing it.

C.K. (a.k.a. Kevin Greggain)