

# Exit32 Version 1.4

*Exit32 help Contents*

[About Exit32](#)

[Installation](#)

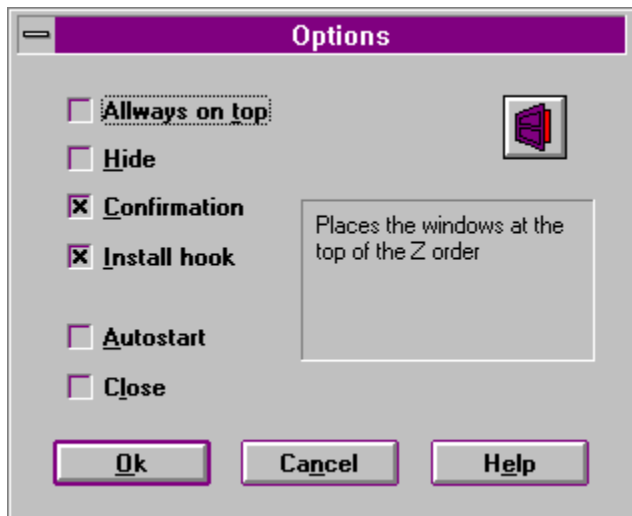
[Overview](#)

[Configuration](#)

## Configuration

The **Exit32** default configuration is shown in the following dialog box.

To configure **Exit32** select *Install options* in the control menu or press **CTRL+ALT+I**, and choose a new configuration.



## Overview

### What is it:

**Exit32** is an utility to logoff, shutdown or restart Windows NT™

It needs to run:

- Windows NT™ version 3.1
- The Rights to do certain actions.

To exit your Windows NT session you may choose:

- **Logoff** this will end the Windows NT session.
- **Shutdown** this will end the Windows NT session and prepare the computer to be turned off.
- **Restart** this will end the Windows NT session and prepare the computer to be restarted.

### How does it work:

To execute the default option, double click in the application's icon.

You can also choose an option from the control menu or if the keyboard hook is installed press:

CTRL+ALT+L to **logoff**.

CTRL+ALT+A to **shutdown**.

CTRL+ALT+R to **restart** the machine.

You can also use the keyboard hook from any console applications.

If **Exit32** is not visible you can always access to options pressing **CTRL+ALT+I**.

The program uses the Windows NT Registry to store the options.

If Exit32 is installed for the current user you can find the key

KEY\_CURRENT\_USER\Software\ARC Sft\Exit32

## About Exit32

By **Alex Ramon Cornet**, 12-1993.

It's freeware.

For information, suggestions ...

CompuServe id: **1000136,3146**

Internet: **100136.3146@compuserve.com**

## Always on top

Places the Exit32's icon at the top of the Z order.

## Hide

Hides the application **Exit32** , to restore, press **CTRL+ALT+I** and uncheck the **Hide** option.

## Confirmation

Ask for confirmation to exit Windows NT.

## Install keyboard hook

Installs the keyboard hook to execute an action (logoff, shutdown , restart) quickly and directly throw the keyboard..



## Close Exit32

Closes the program.

Useful if its icon is not shown.

Ok

Closes the dialog box and accepts the new configuration.

## Cancel

Cancels the dialog box.

## Help text

Shows an explanation about an option.

## Help

Shows this help file.

## Autostart

If you choose this option, every time this user logs on **Exit32** will be executed.

## Installation

### Files:

EXIT32.EXE	the program.
EXIT32EN.HLP	this help file.
CTL3D32.DLL	Microsoft 3D windows controls.
EXIT32.TXT	text file.

You only need the file EXIT32.EXE, if the program can locate the library CTL3D32.DLL you will see the dialog in 3D.

