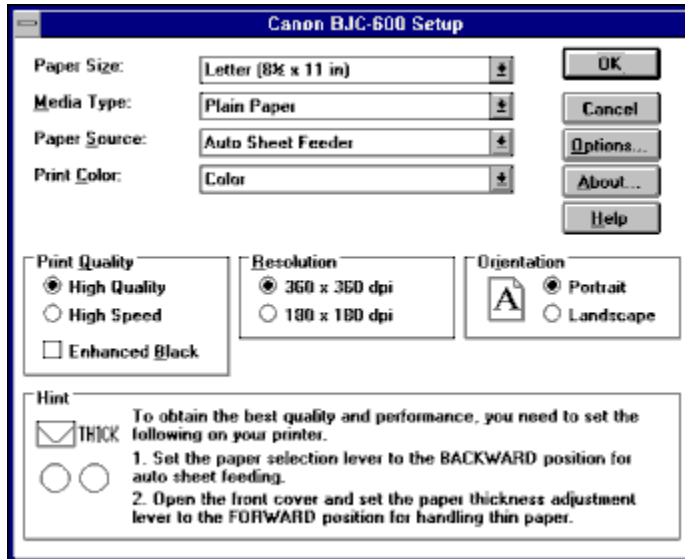


## BJC-600 Setup

You will find that the simple settings for the BJC-600 Windows Driver offer sophisticated control over how your color documents will be printed by the Canon BJC-600 printer.

Click on any of the components of the BJC-600 Setup window to learn about those features:



For additional information, please see the following topics:

[Printing a Document](#)

[Troubleshooting](#)

[Where to Find More Help](#)

## Paper Size

The **Paper Size** pull-down menu is used to specify the size of the paper inserted in the BJC-600 color printer.

The following paper sizes can be used with the BJC-600 printer:

### **Letter**

This paper size corresponds to the standard 8 1/2" x 11" (216mm x 279mm) paper size used in the United States. This is the default paper size.

### **Legal**

This paper size corresponds to the standard 8 1/2" x 14" (216mm x 356mm) paper size used in the United States.

### **A4**

This paper size corresponds to the standard A4 210mm x 297mm (8.27" x 11.69") paper size used in Europe and Asia.

### **B5**

This paper size corresponds to the standard B5 182mm x 257mm (7.17" x 10.12") paper size used in Europe and Asia.

### **#10 Envelope**

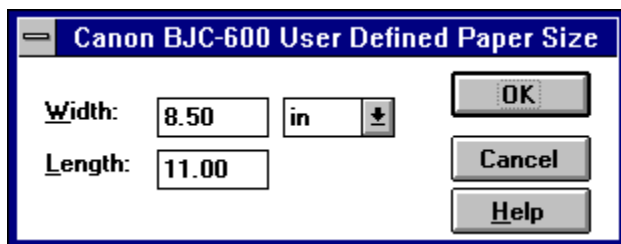
This paper size corresponds to the standard business size (#10) letter envelope. This size (9.5" x 4.1") is common in the United States.

### **DL-size Envelope**

This paper size corresponds to the standard European envelope size, which is 220 x 110 mm.

### **User Defined Size**

When User Defined Size is selected from the menu the following User Defined Paper Size dialog box will appear for you to specify the dimensions for the paper size that you want to use. Click on any of the components of the dialog box to learn about those features.



Canon BJC-600 User Defined Paper Size

Width: 8.50 in

Length: 11.00

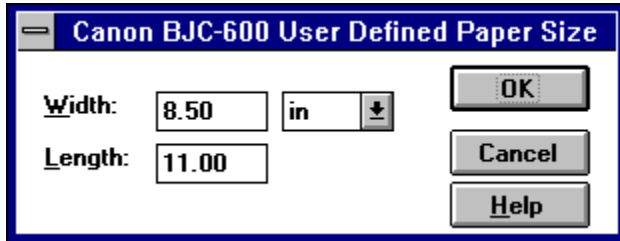
OK

Cancel

Help

## User Defined Paper Size

When User Defined Size is selected from the menu the following User Defined Paper Size dialog box will appear for you to specify the dimensions for the paper size that you want to use. Click on any of the components of the dialog box to learn about those features:



## Paper Width

You can enter any size from 4.1 inches to 8.5 inches.

## Paper Length

You can enter any size from 4.1 inches to 14 inches.

## **Measurement System**

This pull-down menu enables you to select an alternate measurement system. You can select inches (the default measurement for North America), or millimeters (default measurement for Europe and Japan).

## Media Type

The **Media Type** pull-down menu is used to define the type of media (such as paper, or transparency film) that is loaded in the Canon BJC-600 printer. This setting is important for controlling the quality of the final printed image. Specifying the correct Media Type setting is essential for producing high-quality printed images.

Five settings are available in the Media Type pull-down menu:

### **Plain Paper**

This setting is used when ordinary bond type paper is loaded in the Canon BJC-600 printer. This setting will set the color dots generated by the printer to yield the highest quality printed image with bond type paper.

### **Coated Paper**

This setting is specially configured for printing with Canon Color BJ Paper LC-101. The LC-101 paper is designed to minimize the color spread of the individual color dots that make up the printed image, and will yield the highest quality prints from the Canon BJC-600 printer. Canon recommends that you use the LC-101 paper to achieve the highest possible color fidelity.

### **Transparency**

This setting is used when transparency (such as overhead-projection) material is loaded in the Canon BJC-600 printer. Canon recommends that you use the Canon Color BJ Transparency CF-102 material to achieve the highest possible color fidelity.

### **Back Print Film**

This setting is used for media in which the output is printed on the back side of the paper. Use Canon recommended back print film for highest quality.

### **Other Paper**

This setting is used for media other than those mentioned above. In this case, you must select the appropriate print mode from the Operator Control Panel, and set the paper feed lever and paper thickness lever as required.

**Important:** When using heavy-bond (thick) paper, be sure to adjust the green paper-thickness handle on the BJC-600 printer. For complete information about setting the printer to accommodate various paper thicknesses, refer to the *Canon BJC-600 Users Manual*.

## Paper Source

The **Paper Source** setting defines how paper (or other media, such as transparency film) will be fed to the Canon BJC-600 printer.

There are two possible paper source settings:

### **Auto Sheet Feeder**

The default setting for the Paper Source is Auto Sheet Feeder, which means that the paper will be fed into the printer from the sheet feeder mechanism of the Canon BJC-600 printer.

### **Manual Feed**

The manual feed setting means that the media will be fed into the printer, by hand, one sheet at a time. The printer prompts you to insert each sheet of paper. Use manual feed for transparencies and back print film media.



## Print Color

The **Print Color** setting defines how colors are interpreted and printed by the Canon BJC-600 printer.

The following options are available from the Print Color pull-down menu:

### **Black and White**

This setting is used to define that documents will be printed in black & white only, without any other colors. You should use this setting when printing files that have no color or grayscale images, such as text files.

### **Grayscale**

This setting is used to define that text will be printed in black and white, and that graphic images will be rendered in grayscale. In other words, full-color images will be translated and printed in shades of gray. The Grayscale setting will result in a faster printing speed than the two color settings, and is useful for printing draft copies of color files.

### **Color**

This setting is used to define that documents will be printed in full color (up to 24-bit per pixel capability), but does not activate the Color Matching capability of the Canon BJC-600 Windows Driver. Without Color Matching, the printing speed of the Canon BJC-600 is somewhat improved. You should use this setting for printing color files that do not require Color Matching, such as bar charts that contain only simple colors.

### **Screen Matched Color**

This setting activates the Color Matching feature of the Canon BJC-600 Windows Driver, so that the colors of the print generated by the Canon BJC-600 printer will match the colors displayed on your computer screen. To use the color matching feature, you must first set your monitor type via the [Options button](#). This tells the Canon BJC-600 Windows Driver which series of color-correction calculations to implement to make the printed colors match those you see on the monitor screen.

### **Important:**

To ensure absolute color fidelity, the Color Matching feature of the Canon BJC-600 Windows Driver assumes the use of Canon Color BJ Paper LC-101. When you use the Color Matching feature, you insert this type of paper in the BJC-600 printer, and you should select the **Coated Paper** setting in the [Media Type](#) pull-down menu of the Canon Color BubbleJet BJC-600 Setup dialog box.

## Print Quality

The **Print Quality** settings are used to define the overall quality of the document printed by the BJC-600 printer. Three Print Quality settings appear in the Canon Color BubbleJet BJC-600 Setup dialog box:

### **High Quality**

This setting will result in the highest-quality printed output that can be created by the Canon BJC-600 printer.

### **High Speed**

This setting increases the print speed of the Canon BJC-600 printer, with a small sacrifice in the overall print quality. You should use this setting for printing draft or test copies of your work.

### **Enhanced Black**

This setting is used to intensify the black areas of the printed image. The Enhanced Black setting can be used only with the High Quality setting.

## Resolution

The **Resolution** setting influences the resolution (quality) level of the graphic image that is printed by the Canon BJC-600 printer.

**360 x 360 dpi:** This is the default setting and causes the Canon BJC-600 printer to print at its highest resolution. At this setting, the printer will print combinations of ink dots at 360 dots per inch, to create the highest quality image.

**180 x 180 dpi:** This Resolution sets the Canon BJC-600 printer to a lower resolution, causing the printer to print combinations of ink dots at 180 dots per inch.

## Orientation

The **Orientation** settings are used to define how the graphic image (and/or text) is printed on the page without changing the position of the paper in the paper tray of the BJC-600 printer.

Two options are available:

### **Portrait**

The Portrait setting enables you to print across the page vertically.

### **Landscape**

The Landscape setting enables you to print across the page horizontally.

## Hint

The **Hint** text field tells you the appropriate settings for the paper feed lever and the paper thickness lever.

## Cancel

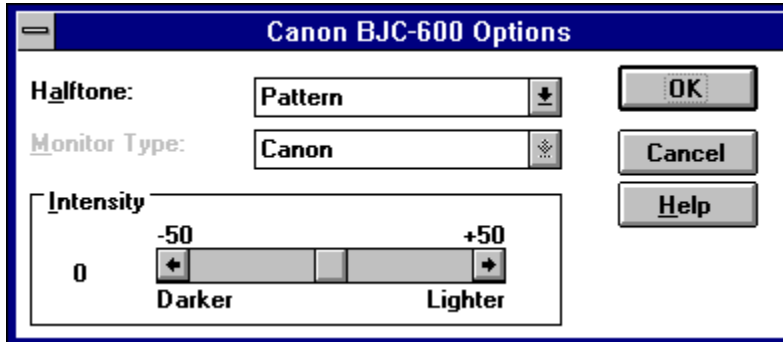
Pressing the **Cancel** button will close the window and cancel any changes you have made.

**OK**

Pressing the **OK** button will cause any changes you have made to take effect and close the window.

## Options

Pressing the **Options** button brings up the following dialog box. Click on any of the components of the Options window to learn about those features:





## Intensity

The intensity of the printed image can be manipulated if you have previously selected either Color or Grayscale in the Print Color pull-down menu. Adjust the Intensity control as necessary to make the printed image lighter or darker.

**NOTE:** When set to Screen-Matched Color, the Intensity is automatically adjusted to match the monitor screen display.

## Halftone

The Canon BJC-600 color printer contains four colors of ink: cyan, magenta, yellow, and black. Intermediate colors can be created by mixing combinations of these inks. To print the entire spectrum of color, the BJC-600 Windows Driver applies special halftone methods, where different colored dots of ink are placed closely together to create the illusion of other colors.

Two different halftone methods can be selected from the Halftone pull-down menu.

**Pattern:**

This method uniformly aligns individual dots of different colored inks to create the appearance of intermediate colors.

*This method offers faster printing speed, and is best suited for printing documents that contain large areas of solid color, such as bar charts and graphs.*

**Diffusion:**

This method randomly places individual dots of different colored inks to create the appearance of intermediate colors.

*The Error Diffusion method is best suited for printing documents that contain finely-detailed graphics, or photographic images that have been placed in the document.*

**NOTE:** The Halftone menu selections have no effect when printing monochrome graphic images.

## Monitor Type

The Monitor Type setting is used to define the type (i.e., manufacturers brand name) of the monitor that is connected to your computer. Because the absolute colors that appear on different brands of computer monitors may vary, the Canon BJC-600 Windows Driver allows you to specify the exact brand of monitor connected to your computer system. When set to Screen-Matched Color, the colors that appear on the final print will correspond to the color characteristics of the monitor that you have selected.

The Monitor Type pull-down menu offers pre-programmed settings for popular brands of monitors that can be used for printing with the Canon BJC-600 printer.

<b>Acer</b>	<b>NEC</b>
<b>Barco</b>	<b>Samsung</b>
<b>Canon</b>	<b>Seiko</b>
<b>Compaq</b>	<b>Sony 13</b>
<b>IBM</b>	<b>Sony 17</b>
<b>Mitsubishi</b>	<b>Other</b>

## About

Pressing the **About** button brings up a dialog box showing the copyright and version number of this printer driver.

## Help

Pressing the **Help** button brings you to this Help window.

## Troubleshooting

If you should experience a problem in using the BJC-600 Windows Driver software, first take a few minutes and try to isolate the problem. This section lists some common problems encountered when working with the BJC-600 Windows Driver and the Canon BJC-600 printer.

**Problem:** *The BJC-600 printer does not print at all.*

**Solution:** Make sure the printer is plugged in and turned on. Next, make sure that the printer is properly set up as specified in the users manual supplied with the printer. Review the Printer Configuration and Setup to verify that everything is set correctly as specified in this manual.

**Problem:** *A Windows application will not allow you to print from the File menu.*

**Solution:** Open the Main Control Panel - Printers, and set the Canon BJC-600 printer as the default printer by double clicking on its name. If this does not cause the Canon BJC-600 to be displayed as the default printer, click on the **Configure** button. Make sure the correct port (LPT 1:, LPT2:, etc.) is selected, and click on the **OK** button. Double-click on the Canon BJC-600 name once again. This will define that the BJC-600 printer is the default printer, and will be used when printing documents.

Also check to make sure that the printer is correctly connected to the computer, and that it is turned on.

**Problem:** *The page prints, but is not the output that you expected.*

**Solution:** Make sure you have selected the Canon BJC-600 setting either in the Windows Control Panel, or from the printer setting for your particular application.

**Problem:** *Fonts in the file do not print as smoothly rounded characters.*

**Solution:** Make sure that you have installed an outline font manager, such as TrueType (which is used in Windows 3.1), Adobe Type Manager, or Bitstream Facelift. Bit-mapped fonts designed for dot-matrix printers will not print smoothly rounded characters when used with high-resolution printers such as the BJC-600.

**Problem:** *There is a problem printing the file, and the BJC-600 printer is connected to a remote computer on a network.*

**Solution:** Make sure that all of your software is correctly configured. For example, with a Novell network, the Capture statement must be included. Refer to the users manuals supplied with your networking software for further information.

**Problem:** *An alert window appears, stating that Color Matching failed to initialize.*

**Solution:** It could be that one (or more) of the BJC-600 Windows Driver software files are not correctly installed. Reinstall the BJC-600 Windows Driver software files as described in your User's Manual. The alert window may also indicate that your system is low on memory. When this alert appears, you may click on the Continue button to print without the Color Matching feature.

## Where to Find More Help

In the event that you cannot solve a problem with BJC-600 Windows Driver software, review the [Troubleshooting section](#). Also make sure that you have reviewed all of the Troubleshooting information that appears in the *Canon BJC-600 Users Manual*. If you still cannot resolve the problem, contact the appropriate Canon office listed below:

### United States

Canon Computer Systems, Inc.  
123 East Paularino Ave.  
P. O. Box 5048  
Costa Mesa, CA 92628-5048  
(800) 423-2366

### Canada

Canon Canada Inc.  
Attn: Printer Product Support  
6390 Dixie Road  
Mississauga, Ontario, L5T 1P7, Canada  
(416) 795-1111

### Australia

Canon Australia Pty Ltd.  
One Thomas Holt Drive  
North Ryde, Sydney,  
N. S. W. 2113, Australia  
2-805-2642

### New Zealand

Canon New Zealand Ltd.  
Fred Thomas Drive, Takapuna  
P. O. Box 33-336  
Auckland, New Zealand  
9-486-1570

### United Kingdom

Canon U. K. Ltd.  
Canon House, Manor Road  
Wallington, Surrey SM6 OAJ  
United Kingdom  
081-647-4044

### Singapore, Malaysia, Thailand and Indonesia

Canon Singapore Pte. Ltd.  
95 South Bridge Road, #13-01/15  
Pidemco Centre  
Singapore 0105  
65-532-4400

## Printing a Document

Before you attempt to print a document or graphic, you should confirm that the Canon BJC-600 printer is correctly connected to your computer, and that it is turned on. Be sure that the parallel interface is selected from the Printers/Connect dialog in the Control Panel. You should also confirm that the printer has an adequate supply of paper and ink. If you have any questions, refer to the users manual supplied with the printer.

There are times when it will be useful to process the printing for the document in the background, so that you can do other work with your computer while printing documents with the BJC-600 printer.

The background printing capability does not apply if you have disabled the Print Manager in the Printers Control Panel. If the Print Manager is disabled, activating the print command from an application will temporarily suspend Windows multi-tasking capabilities until the document has been completely processed by the application.

Once the application has processed the document, you will be able to continue working, or, you can switch to a different application.

To print a document do the following:

1. Start the application which corresponds to the file that you want to print, and open the document.
2. Choose **Print Setup** from the File menu, and make the appropriate settings as described in Chapter 2: *BJC-600 Print Setup*. Click on the OK button to close the Print Setup dialog box and lock-in your settings.
3. Some applications will have a **Page Setup** command in the File menu. If available, this command may allow you to specify special page margins, headers, and footers.

Depending on the size of the paper loaded in the Canon BJC-600 printer, you may want to reduce the margins for printing your document. If the Page Setup choice is available in the File menu, refer to your application manual for detailed instructions.

4. Choose **Print** from the File menu, and the Print dialog box will appear.
5. Make the appropriate settings for the number of copies, and/or the page range that you want to print. You can also adjust scaling percentage (if the application includes this feature). It is also recommended that you allow the Canon BJC-600 printer to control the print resolution (if the application includes this feature), to obtain accurate scaling of your graphic or document. If the **Use Printer Resolution** option appears in the Print dialog box, you may enable this option by clicking on its check-box.
6. Click on the OK button to begin printing. While the document is printing, a status message will usually appear. The contents of this message will vary depending upon the application, to let you know that your computer is processing your print request.
7. When printing is complete, or when the print job has been turned over to the Print Manager, the Print status message will disappear.

Repeat the previous procedure to print other documents with the Canon BJC-600 printer.



