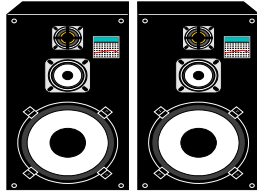




## Logicil MultiMedia Center



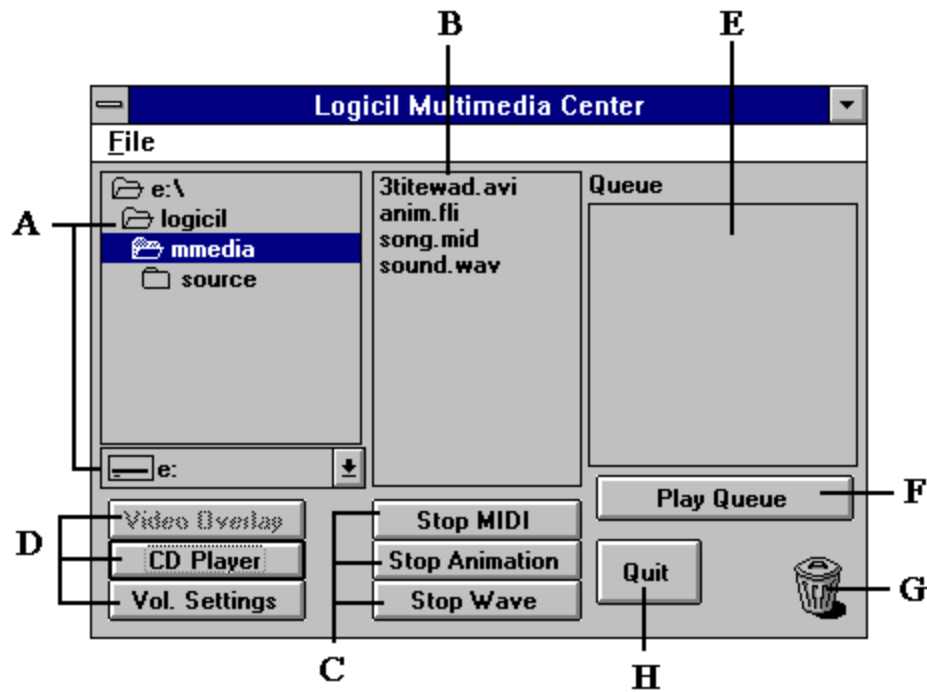
### **Instruction manual** **1993, July 10**

Welcome to the Logicil MultiMedia Center v1.0. We are sure that you will find this program to be the best MultiMedia program ever featuring :

- A **CD Player** that remembers the disc title and the track names
- A **Wav Player**
- A **Midi Player**
- An **Animation Player** (FLI)
- A **Video Player** (Microsoft Video for Windows AVI)
- An **Overlay Player** that allows you to view, capture and save bitmap images from video sources
- The possibility to play all the above simultaneously
- A Queue where you can drag and drop Wav, Midi, Fli and Avi files and play them one after another
- And much more

*If you are not a registered user of the Logicil MultiMedia Center, please read Register.wri before opening the LMC*

After launching the LMC you will see the following screen.



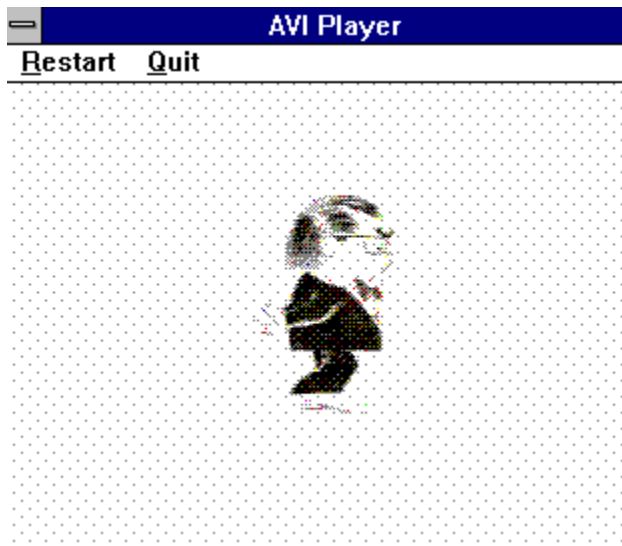
This is the main control center of the LMC. As you can see it's divided in many sections :

**Section A** allows you to choose the directory where you find your AVI, FLI, MID or WAV files. You will see their names in **Section B**.

If you want to start one just double click on the name of the file. In our example, if you want to start Song.mid you double click on it. You can then simultaneously start sound.wav, anim.fli and 3titewad.avi just by double clicking on them.

If you want to stop one file you can do so by using one of the buttons in **Section C**. Please note that if you click on Stop Midi, only the Midi file will stop and so on.

While playing the Avi files you have special controls that allows you to restart or quit the video file.



**Section D** allows you to launch another windows where you will be able to :

- See the video overlay. (A video source coming from a video card)
- Launch the Logicil CD Player. A full featured program
- Launch the Logicil Mixer program

**Section E** is a Queue Player, to use it, you select one or more file (s) with the left mouse button in **Section B**, you then click and hold the right mouse button, drag the files and drop then onto **Section E**. The names of the files should then appear in section E. You can drag any Wav, Mid, Fli or Avi file.

You then press the Start Queue Button (**Section F**) and the Queue player will begin to play all the files in **Section E**. If you want to jump one file, click on next Midi, Next Wave or Next Animation, depending on the file.

If you'd like to delete one file from the queue, select it with the left button, drag, and drop it onto the trash can. If you want to stop all the files in the queue press Stop Queue.

**Section H** of course allows you to quit the Logicil MultiMedia Center.

## Video Overlay

This feature allows you to view the incoming video picture in a window. The video frame resizes as you resize, minimize or maximize the display window.

The freeze/unfreeze feature allows you to capture a video frame.

The save feature allows you to save a captured frame to disk in PCX or BMP format.

In the option menu, you will find a nice feature "Put to desktop" which allows you to put the incoming video images as your windows wallpaper. Be advised however that you must use the MAUVE.BMP file included with the MultiMedia Center ZIP file as your primary wallpaper.

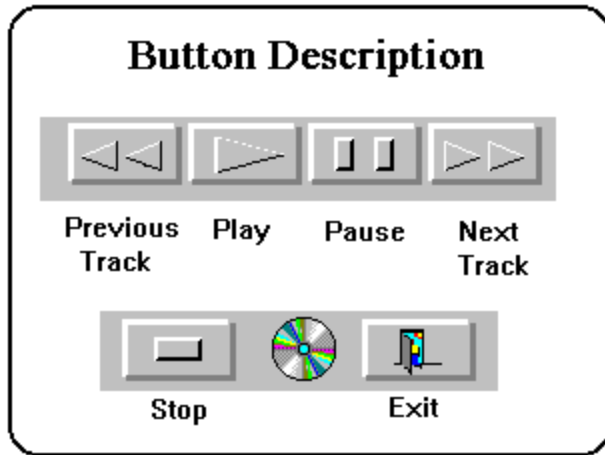
# The Logicil CD Player

The Logicil CD Player is a part of the Logicil MultiMedia Center. It features :

- The ability to record the disc title and the track names
- The possibility to be minimised so you can continue working while listening to your music
- Visualisation of the song name and time while minimized
- CD-like control buttons

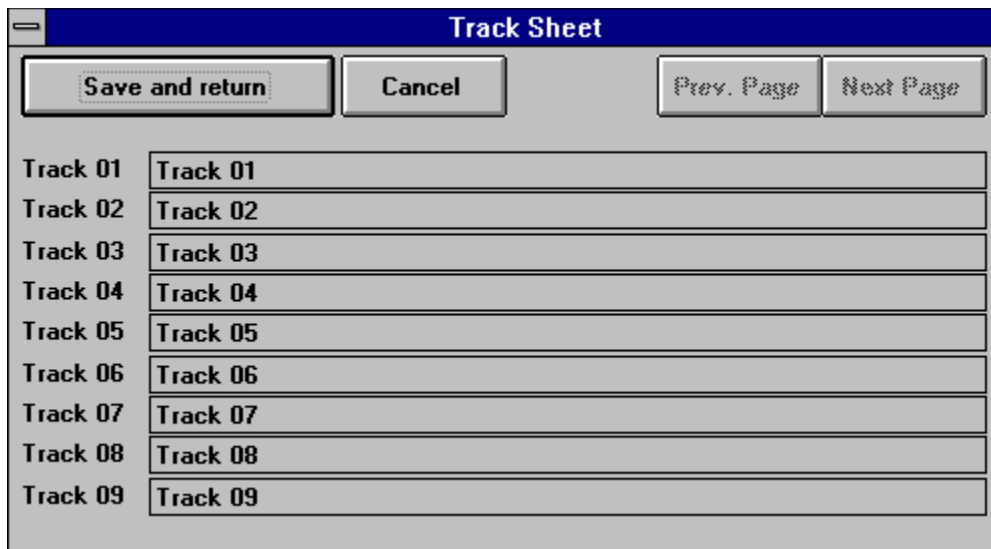


To use the Logicial CD Player, first make sure that you have a CD in your machine, then press on the appropriate button.



If you want to modify the disc title, click in the appropriate text box. The same applies for the artist name. You don't have to do nothing else, the Logicial CD Player will always recognize your disc.

If you want to enter the track names, click on track names.



Click on each track and type the name of the song. If needed, click on Next Page. When finish, click on Save and Return to save the track names. If you do not want to enter track names at this time, click on Cancel.

The Save Settings button saves the three choices above it.

If you want to change the volume Settings, click on the Volume Settings button, the Logicial Mixer will then appear.

## The Logicil Mixer

This program allows you to adjust you volumes according to your needs, you can record your preferences and restore them anytime you want.

This mixer will work with any sound card that has volume control capabilities.



## Minimum requirements

To use this program you must have :

- Windows 3.1, 3.0 with multimedia extension or Windows NT
- **VBRUN200.DLL** available on many CompuServe forums

For Wave audio output

- A sound board supported by Windows (Soundblaster, Microsoft Sound System, Adlib Gold)

For Midi output

- A midi interface board (like a Roland MPU-401) attached to a tone generator or any sound board that has FM Synthesizer capabilities

For the CD Player

- A CD Player recognized by Windows

For the overlay

- A video source port that uses MCI overlay capabilities (like Creative Labs Videoblaster)

For the Video Player

- Microsoft Video for Windows drivers

For the Animation Player

- Animation1 drivers

This program was fully tested on

- 486-33 PC
- Creative Labs Soundblaster and Soundblaster Pro
- Yamaha TG100 using the Yamaha serial drivers
- Mitsumi CD-ROM LU0005
- Creative Labs MultiMedia extension kit
- Creative Labs Video Blaster
- The Microsoft Sound system
- Nec CDR-84 CD-ROM with Adaptec 1542c SCSI board using Adaptec EZ SCSI package and CorelSCSI drivers



Thank you for using the Logiciel MultiMedia Center. If you're not registered, please read Register.wri.

If you have any questions or comments please send them via CompuServe to :

Gaetan Labrecque  
74200,3162

or via mail to :

Logiciel enr.  
2480 du Rhin #5  
Québec, PQ  
Canada, G1P 2Z6

Thank You and enjoy !