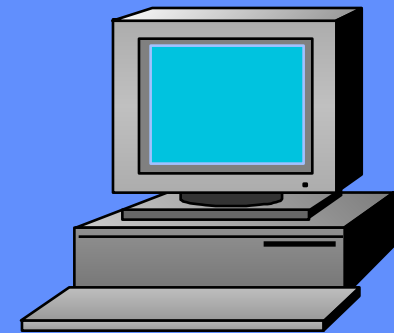


Data Communications Solutions

X.25 Packet over ISDN

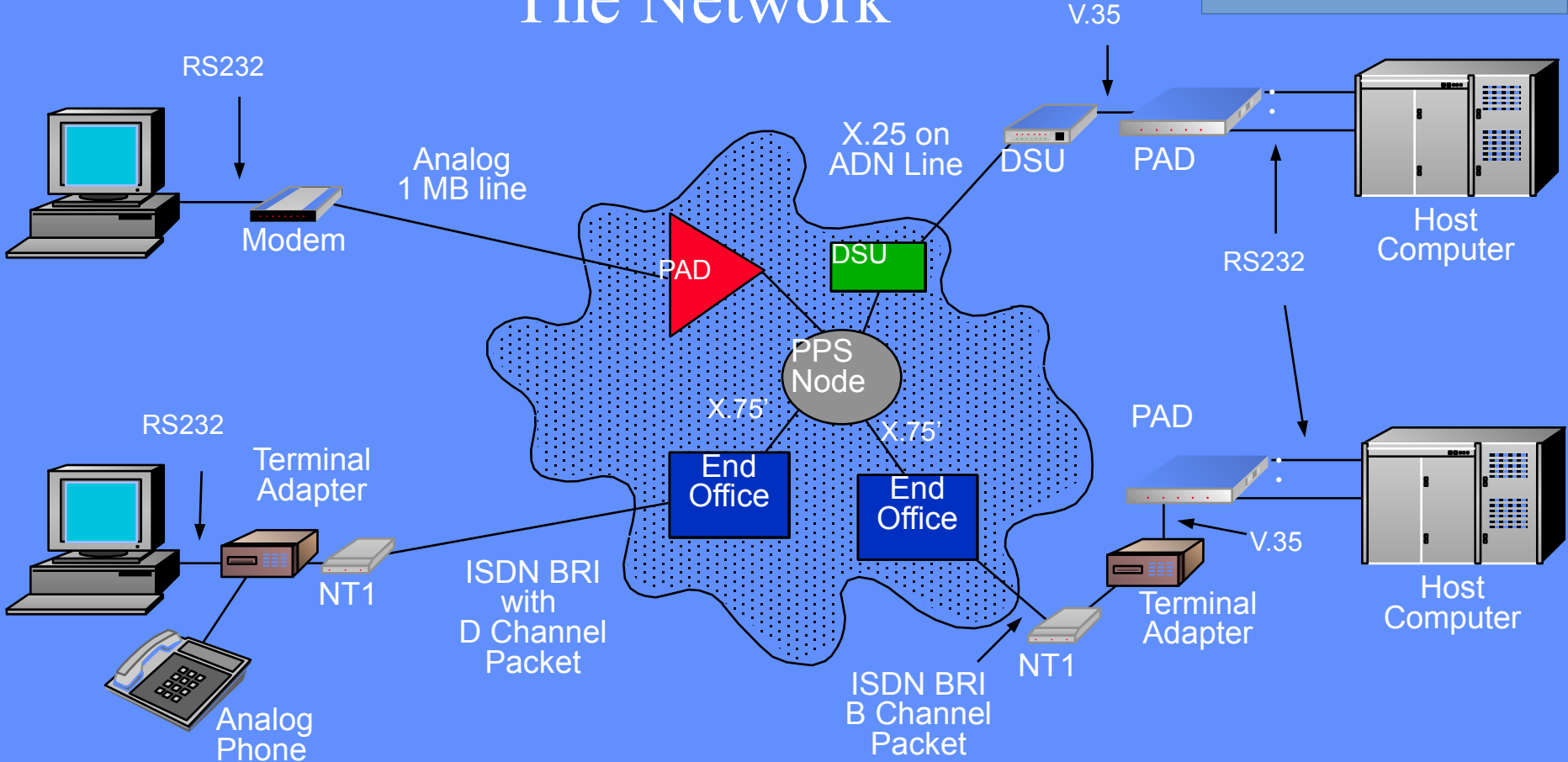
- B Channel Packet
- D Channel Packet



Public Packet Switching

- ISDN BRI
- X.25 packet
- Analog

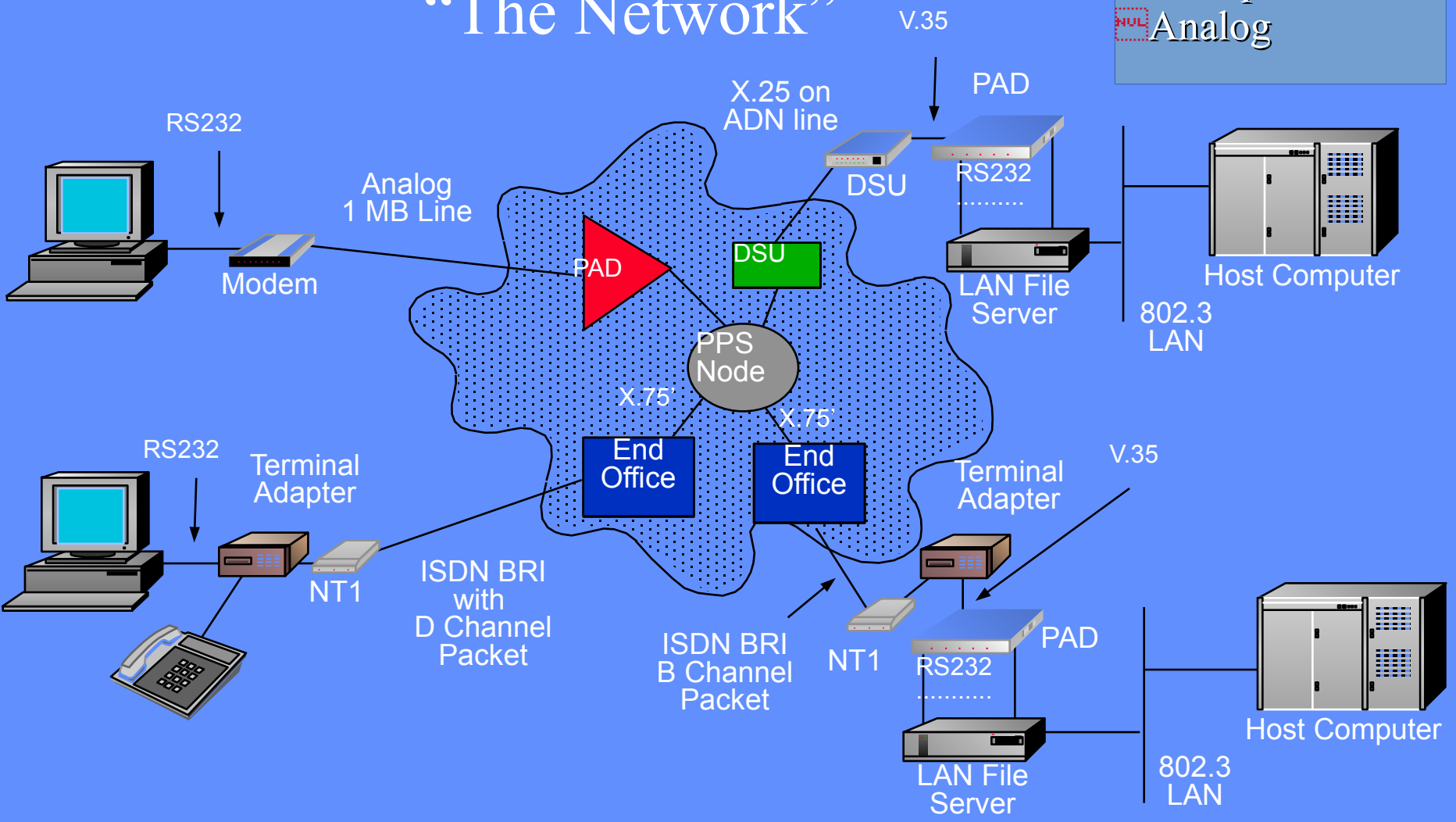
“The Network”



Public Packet Switching

“The Network”

- ISDN BRI
- LAN
- X.25 packet
- Analog



Market Applications
Development Lab, 8/94
Contact: 510-823-1663

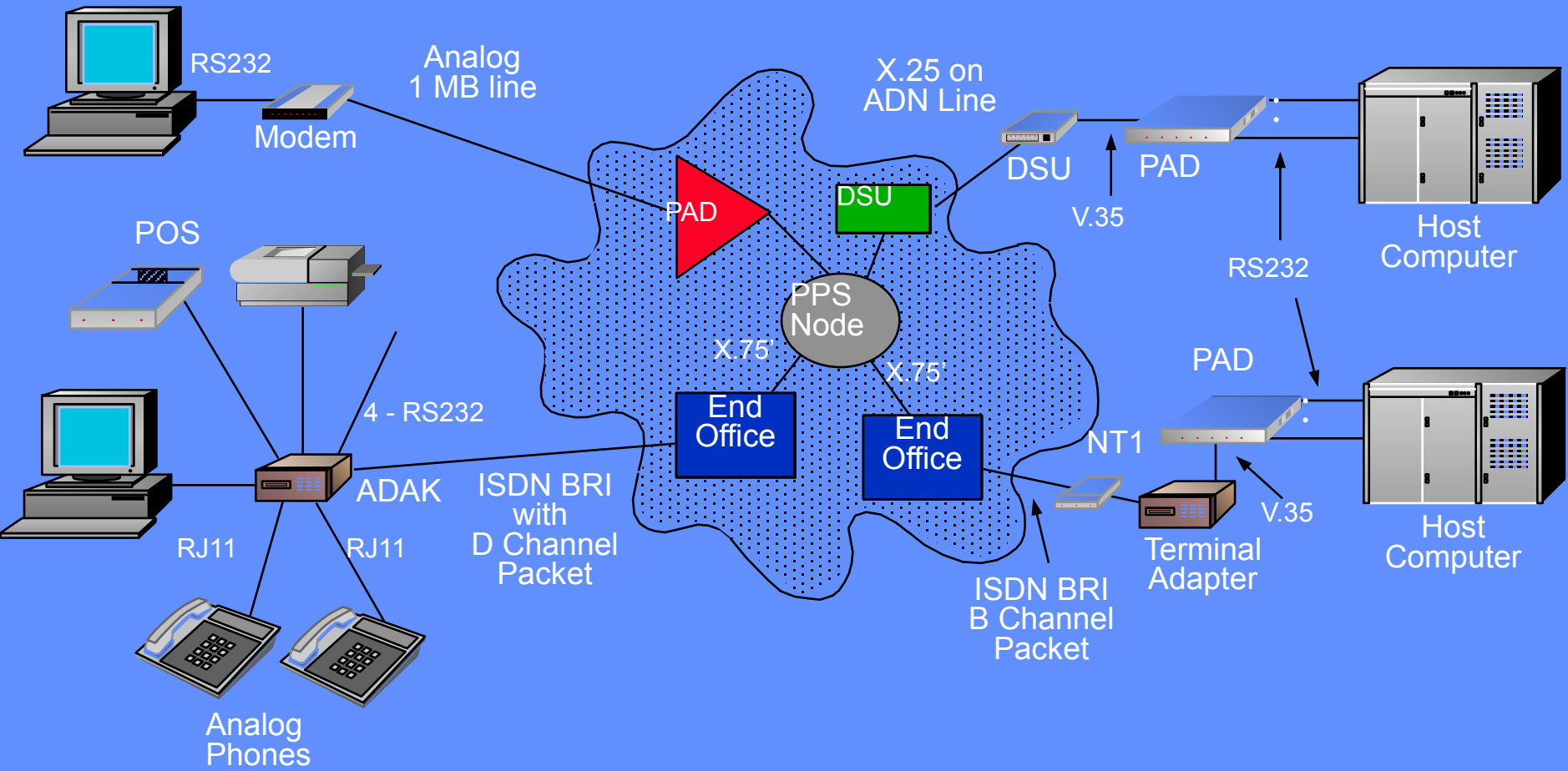
All brand and product names are trademarks or registered trademarks of their respective holders. These are only examples. Pacific Bell does not endorse the products of other companies. Products not shown may work equally well.



Point of Service

ISDN BRI
X.25 packet

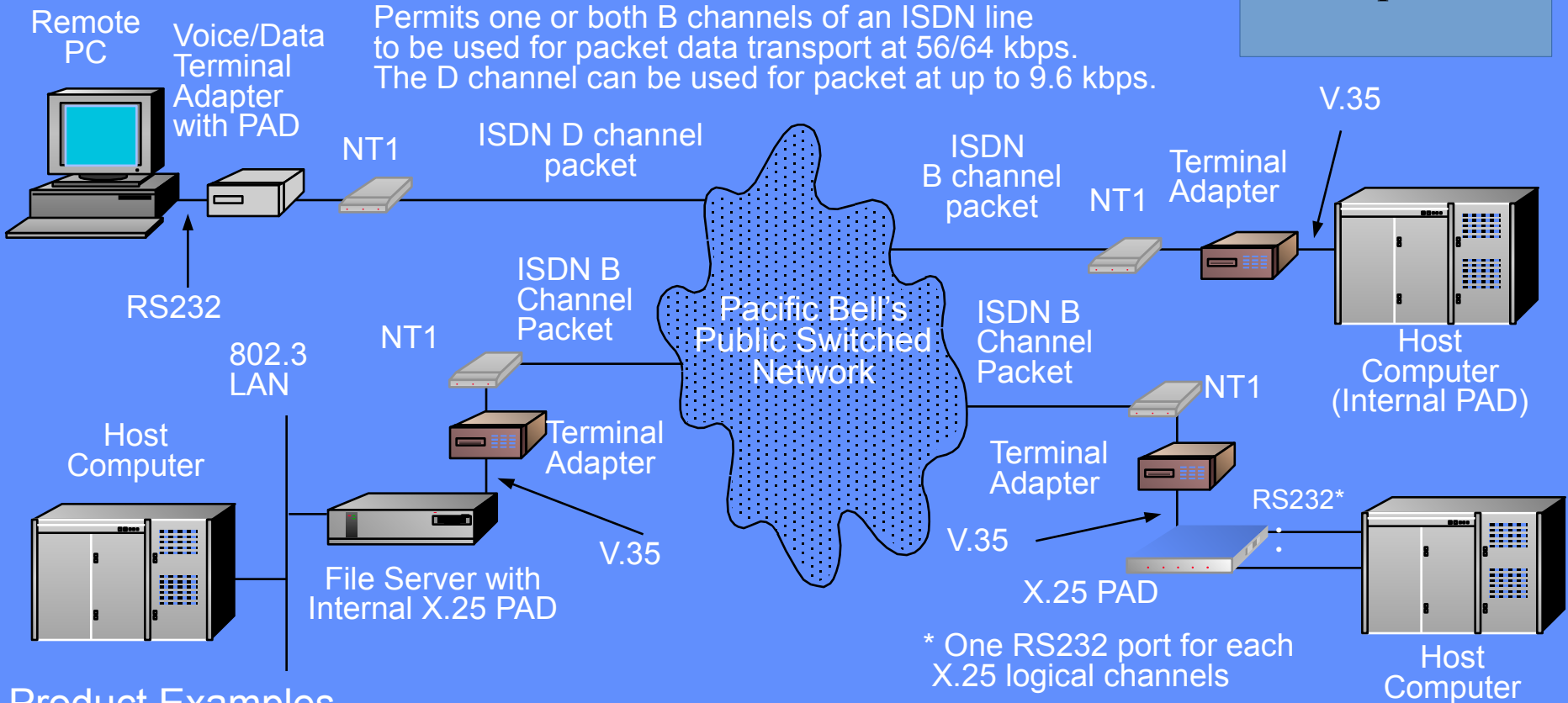
“The Network”



B and D Channel Packet Service

ISDN BRI
X.25 packet

Permits one or both B channels of an ISDN line to be used for packet data transport at 56/64 kbps. The D channel can be used for packet at up to 9.6 kbps.



* One RS232 port for each X.25 logical channels

Product Examples

ISDN: Centrex IS Package C or SDS IS with extra B packet tariff for both.
NT1: AT&T, Northern Telecom or Adtran
Terminal Adapter: See last page

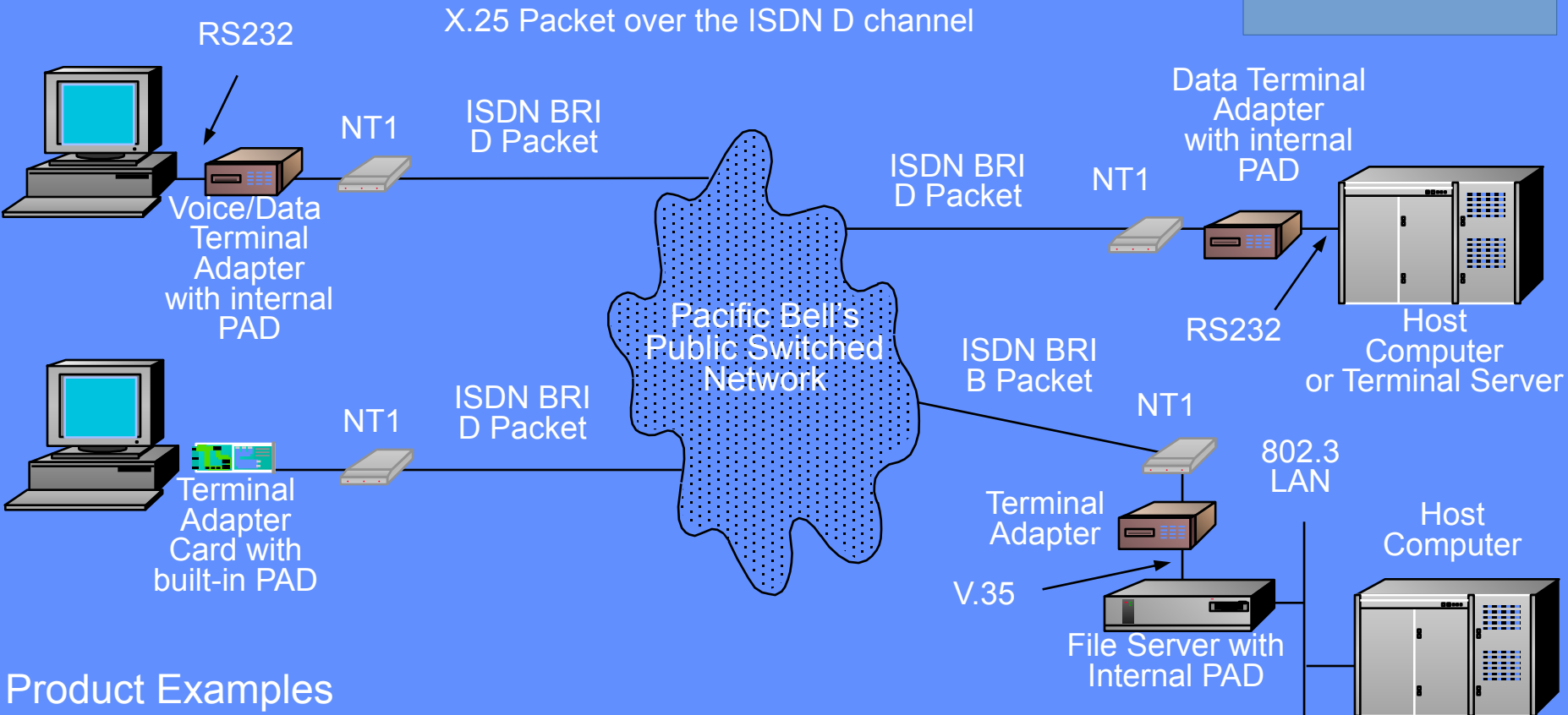
Data Speeds

D channel: 9.6 kbps, up to 15 logical channels
 B channel: 56/64* kbps, 15 to 100 logical channels

*56 kbps per B channel except for some types of calls within a switch.

ISDN Packet Terminal Access

ISDN BRI
X.25 packet



Product Examples

ISDN: Centrex IS Package B or C or SDS IS
NT1: AT&T, Northern Telecom or Adtran
Terminal Adapter: See last page

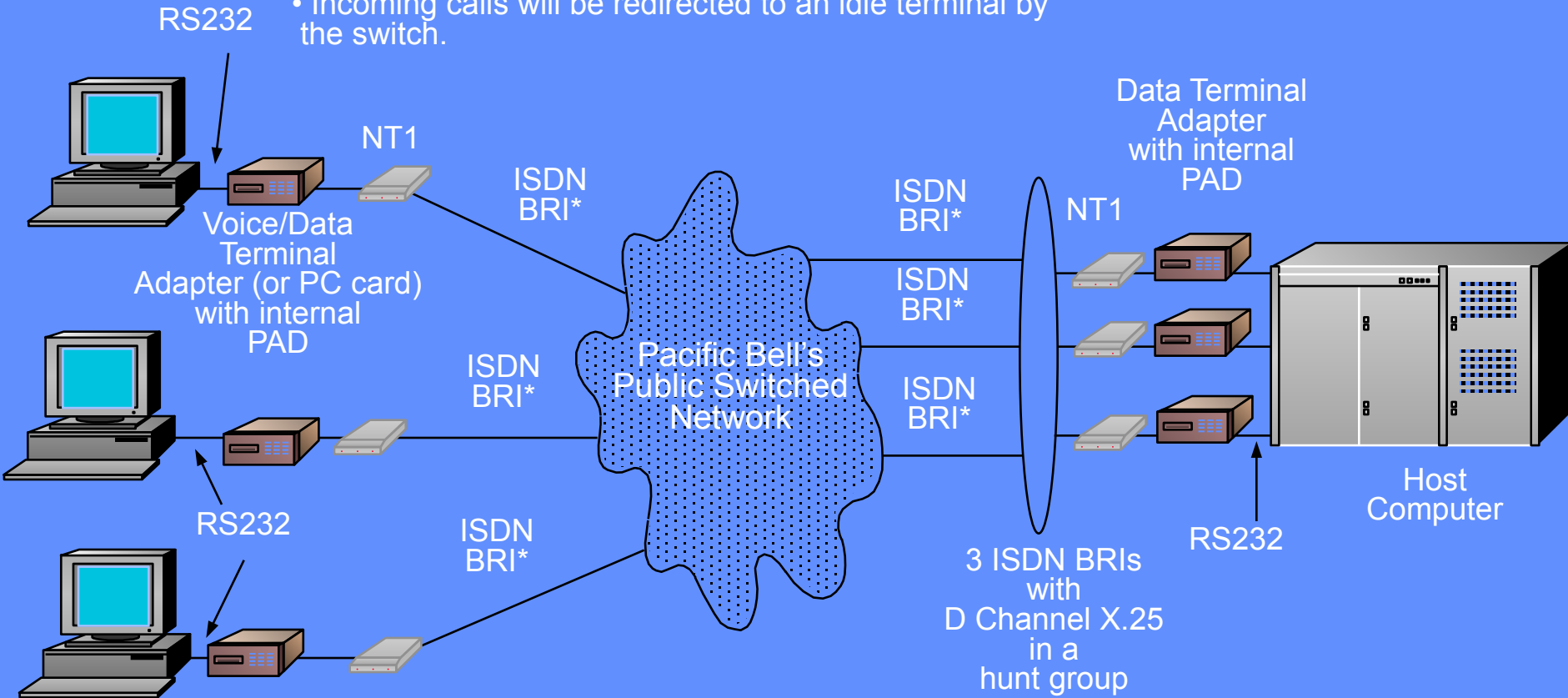
Data Speeds

D Packet: 9.6 kbps
 with up to 15 logical channels

Packet Data Hunting

ISDN BRI
X.25 packet

- Permits an ISDN customer to provide the hunting feature for a group of packet terminals
- Incoming calls will be redirected to an idle terminal by the switch.

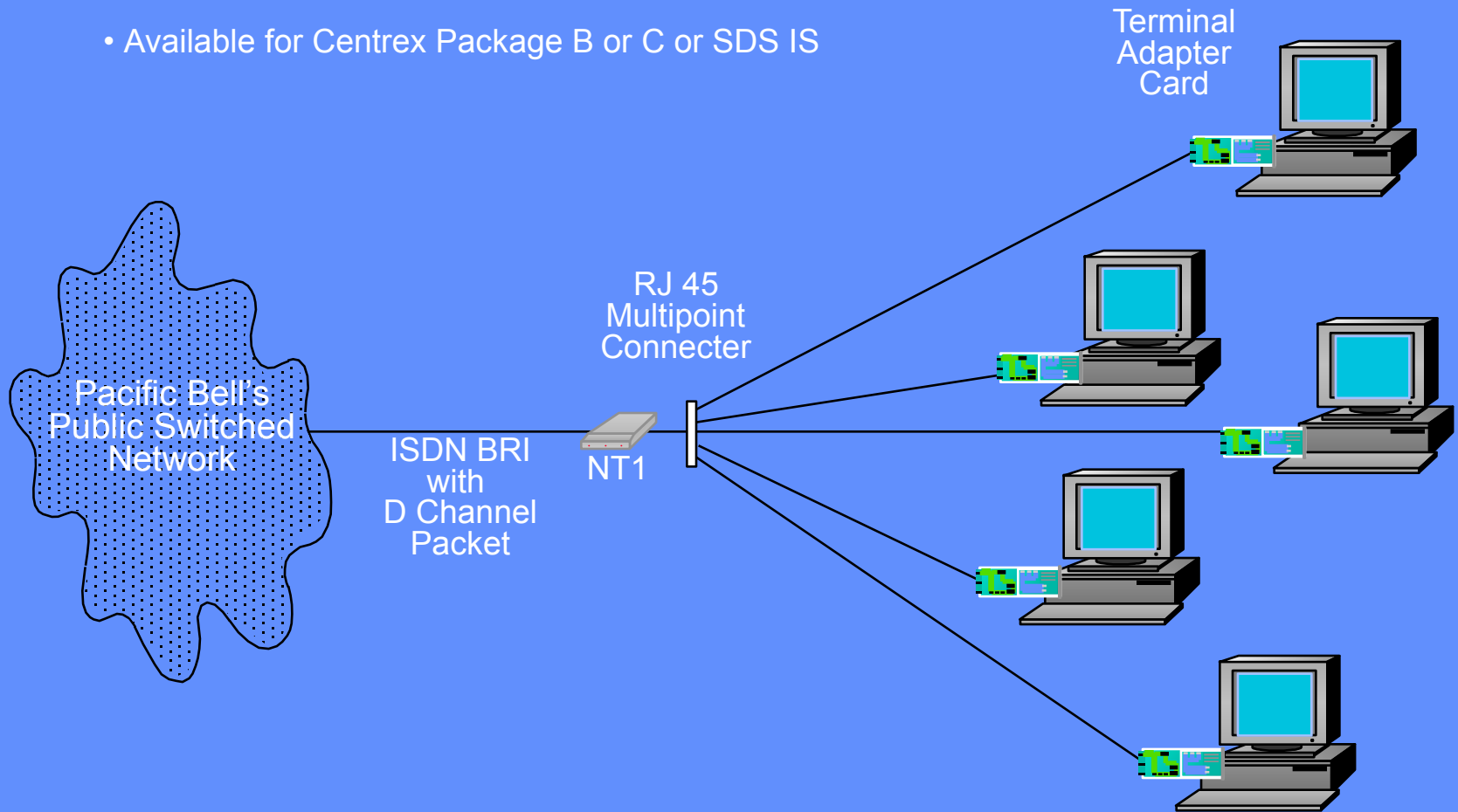


* Centrex IS Package B or C or SDS IS

D Channel Packet Devices

ISDN BRI
X.25 packet

- Allows up to five additional devices on the D Channel
- Available for Centrex Package B or C or SDS IS



Terminal Adapter (TA) Examples

Many additional models and vendors are available. Get updated information before acting.

	Form	Data Ports	Interfaces	X.25 Packet
AT&T 7500	Standalone	1	RS232**, V.35	B & D
AT&T 750X	Phone/TA	1	RS232	D
Fujitsu 410	Standalone	2*	V.35	B
Fujitsu 300/400	Standalone	2***	RS232	D
Fujitsu 2000/1050	Phone/TA	1	RS232	D
Gandalf TA1	Standalone	2	V.35	B
Hayes STA	Standalone	1	RS232, V.35	B & D
UDS 220	Standalone	1	RS232, V.35	B & D
NTI 5317/5209	Phone/TA	1	RS232	D
NTI M5000TD-1	Standalone	1	RS232, V.35	B & D
Hayes PCTA	PC Card		Comm Port Emulation	B & D
Teleos B102	PC Card		Comm Port Emulation	B & D
AT&T Packet 6 or 30	Standalone	6 or 30	RS232	B & D
ADAK	Standalone	4	RS232	D

* One if connected to a DMS switch. ** 2 ports if used for packet. *** Fujitsu 300 only on 5ESS.