

<a href="#">Introduction</a>		<a href="#">Late Breaking News</a>
<a href="#">Using SETapp</a>		<a href="#">Common Questions</a>
<a href="#">References</a>		<a href="#">Linder Software</a>
<a href="#">Technical Support</a>		<a href="#">Registration</a>
<a href="#">License and Purchasing Information</a>		

# License and Purchasing Information

[Copying Information](#)

[Disclaimer](#)

[What is shareware?](#)

[Why register?](#)

[How To Register?](#)

[Registration Form](#)

[How to Contact Linder Software Systems?](#)

[About Linder Software Systems](#)

[Revision History](#)

[Copyright Information \(Shareware\)](#)

[Copyright Information \(Registered Version\)](#)

[License Information](#)

[Product Price List](#)

[Upcoming Implementations](#)

## Copying Information

This system may be freely used and copied but may not be sold except for a nominal copying charge not to exceed US\$ 5,-. This file should be included with all copies of SETapp. If you decide you use SETapp after using it for 21 days you must register it.

## **Disclaimer**

SETapp is distributed as shareware. No warranty exists, either express or implied. No liability is assumed for any damage or loss resulting from the use of this program. No claims are made regarding the accuracy of this program. The author reserves the right to change pricing in future versions.

## **What is shareware?**

Shareware is a system where you get to try out a program for a period of time (in this case 21 days), after which, if you decide to continue using the product, you must legally pay the author the amount he or she asks for (in this case US\$ 99,- for a Standard License). Shareware products are generally very good quality products, and offer the user a chance to try out a product before they buy it.

Why register?

# Why Register?

**SETapp is not free.**

You may download [SETapp](#) and evaluate it for up to 21-days. If you continue using SETapp after the 21-day evaluation period, you are required to purchase it. The cost of SETapp Standard is US\$ 99,- and of SETapp Developer (one year update service) is US\$ 198,-.

By purchasing your copy of SETapp, you will receive several benefits.

- Access to SETapp's advanced features, including:
  - Time Stamping
  - CD-ROM and Network support
  - Add your copyright to all your installation projects
  - Convert older SETapp projects to the new release format
  - The ability to backup files before replacing them
  - The ability to display a License Agreement Dialog
- No more nag screen
- Free priority [online](#) technical support.
- Automatic e-mail notification of product upgrades.
- Free minor release upgrades.
- Free maintenance release upgrades within 45 days.
- Discounts on major version upgrades.
- Most importantly, your SETapp registrations are what allow us to continue upgrading the product. Developing this product takes time and money and we cannot do it without your support. We are still working on a native Windows 95 / Windows NT version of SETapp.

We have worked very hard to bring you what we feel is a world-class installation project system. Without your support, we cannot continue to enhance SETapp. Please make sure you register your copy of SETapp if you plan to continue using it.

[How To Register?](#)

[Product Price List](#)

# How To Register?

## ◆ Register via Albert's Ambry:

**Note:**

The registration service via Albert's Ambry will be available on and after Nov. 15,1996

The Registered Version of this program can be purchased and received immediately on the Internet at Albert's Ambry. This corporation handels the back-office things (http & ftp servers, Internet connection and credit card authorization). Registration at Albert's also eliminates shipping and handling costs. Please go to:

<http://www.alberts.com>

Search on: SETAPP19.ZIP

Click on the "**Buy It**" Hotlink to register this software.

**Note:**

It is possible that the files mentioned will not be available due to the product being upgraded. In that case look for files of a similar name with different version numbers at the end (e.g. SETAP191, SETAPP20).

## ◆ Register via Linder Systems e-mail:

If you will not be registering on-line or to update/upgrade your system, you can place orders by e-mail the Registration Form to [101737.2760@compuserve.com](mailto:101737.2760@compuserve.com). You will get the SETapp Installation System on account. Your registration will be processed as quickly as possible (normally within two working days) and your serial number and access authority to our ftp site to download the registered software will be sent to you via e-mail. Please pay the invoice amount directly into our German Bank account after you have received the software.

Thank you for registering this program.

[Product Price List](#)

[How to contact Linder Software Systems?](#)

# Registration Form

You can place orders by e-mail this order form to 101737.2760@compuserve.com.

Please do not forget to give details about your full address and the number of licenses you would like to order !

You will get the SETapp Installation System on account. Please pay the amount directly into our German Bank account after you have received the software.

The Standard Version eliminates the copyright message on the installation screen. It includes an Unlimited Application License, allowing each registered SETapp developer to create any number of installations. You can distribute the Pre-Loader SETUP.EXE, the Installer SETAPP.EX\_ and the Uninstaller UNINSTAL.EX\_ royalty-free to your customers. You only need to purchase one copy of SETapp for each developer who will use it.

The Developer Version of the SETapp Installation System includes not only all features of the Standard Version but A.R.I.S.1. (Automatic Release Improvement Service for one year). We'll keep your tools up to date by sending you our next scheduled releases for the next 12 month !

Product Name : Linder SETapp  
Version : 1.90 (or later)  
Release : 1900 (or later)

Linder SETapp Standard Version 1.90:

\_\_\_\_\_ copies at \$99 each = \_\_\_\_\_

Linder SETapp Developer (A.R.I.S.1.) Version 1.90:

\_\_\_\_\_ copies at \$198 each = \_\_\_\_\_

Upgrade SETapp 1.80 to 1.90:

\_\_\_\_\_ copies at \$35 each = \_\_\_\_\_

Upgrade SETapp 1.xxxx to 1.90:

\_\_\_\_\_ copies at \$50 each = \_\_\_\_\_

Upgrade from Standard to Developer Edition:

\_\_\_\_\_ copies at \$120 each = \_\_\_\_\_

S&H (add US\$ 8,- via snailMail or US\$ 4,- via  
download access to our FTP site) = \_\_\_\_\_

Total payment = \_\_\_\_\_

Contact Name :

Occupation :



Title :

Company :

Postal Address :

:

City :

COUNTRY :

Phone No :

Fax No :

Type and Speed of computer :

Type of display used :

Internet/Compuserve address :

Preferred method of receiving SETapp System:

[1]Snail Mail - or - [2]Download access to FTP Site  
within 24 hours

\_\_\_\_\_

Preferred method of receiving Serial Number:

[1]Snail Mail - or - [2]E-mail within 24 hours

\_\_\_\_\_

Disk Size (only if receiving via Snail Mail):

[1]3.5" - or - [2]5.25"

\_\_\_\_\_

What would you like to see improved or added in SETapp (optional):

What will you use SETapp for (optional):

What programming language will you use SETapp with (optional):

Where did you find out about SETapp (optional):

Terms/Conditions:

I agree SETapp is distributed as shareware. No warranty exists, either express or implied. No liability is assumed for any damage or loss resulting from the use of this program. No claims are made regarding the accuracy of this program. The author reserves the right to change pricing in future versions.

I agree that SETapp, if being used on more than one computer must have a license for each computer.

I will get the SETapp Installation System on account. I will pay the amount directly into your German Bank account after I have received the software.

A letter or e-mail will be sent to me providing me with my serial number.

My signature below indicates my acceptance of these terms and conditions.

Signed: \_\_\_\_\_ Date: \_\_\_\_\_

# How To Contact Linder Software Systems?

Linder Software Systems can be contacted through the Internet at: [101737.2760@compuserve.com](mailto:101737.2760@compuserve.com)

## ◆ **Orders**

cis: 101737,2760  
e-mail: [101737.2760@compuserve.com](mailto:101737.2760@compuserve.com)

## ◆ **Prices**

www: <http://members.aol.com/LinderSoft/Prices.html>

## ◆ **Technical Support**

e-mail: [101737.2760@compuserve.com](mailto:101737.2760@compuserve.com)  
ftp: [members.aol.com/LinderFtp](ftp://members.aol.com/LinderFtp)  
ftp: [members.aol.com/LinderSupp](ftp://members.aol.com/LinderSupp)  
www: <http://members.aol.com/LinderSoft>

We are very interested in hearing your comments or suggestions!

# About Linder Software Systems

Linder econitech was founded in 1989 to develop custom tailored software for MS-DOS and Windows systems.

The organization was renamed Linder Software Systems (LSS) in 1995. LSS new strategy is to develop powerful software tools based on Microsoft's Windows and distribute them via the Internet. With worldwide installations of nearly 450 packages, LSS has a presence in 30 countries. We have already customers (some FORTUNE's 500 GLOBAL CORPORATIONS) in USA, Europe, Australia, Latin America and Asia. LSS end-user base doubled between March 1996 and November 1996.

We are the "right size": small enough to be attentive and responsive to developer needs, yet big enough to substantially improve your development environment and undertake projects other vendors simply cannot.

Linder Software Systems believes that application development is an on-going process, that requires an active partnership between corporate developers and their tools providers.



[101737.2760@compuserve.com](mailto:101737.2760@compuserve.com)

# Revision History

<b>Version</b>	<b>Date</b>	<b>Release Information</b>
<u>1.90.1900</u>	96/11/04	Maintenance Release
1.80.1800	96/09/20	Maintenance Release
1.70.1701	96/08/30	Interim Release
1.70.1700	96/08/25	Maintenance Release
1.60.1601	96/08/13	Interim Release
1.60.1600	96/08/01	Maintenance Release (End of Introductory Period)
1.50.1500	96/07/08	Maintenance Release
1.40.1400	96/06/18	(Internal) Maintenance Release
1.30.1300	96/06/08	(Internal) Maintenance Release
1.20.1200	96/05/30	(Internal) Maintenance Release
1.10.1102	96/05/18	Interim Release
1.10.1101	96/05/06	Interim Release
1.10.1100	96/04/20	Maintenance Release
1.00.1000	96/03/21	First Final Release
0.96	96/03/14	Some bug fixes and functional additions
0.95	96/02/20	First published Pre-Release in U.S.A

## **Technical Support**

Please contact Linder Software Systems for technical support for the product. Preference will be given to registered users requesting support, but every attempt will be made to help all who request support.

# Introduction

## Conventions

Guides to the conventions used in this help file.

## How to Find Help

Teaches you how you can find help whenever you need it while working in SETapp.

## What is SETapp?

Introduces you to the powerful features of SETapp.

## Frequently Asked Questions

Answers to common questions.

# What is SETapp?

Linder SETapp is an easy to use but powerful Application Installation Program for Windows 3.1x (enhanced for Windows 95 but without Registration Database support yet). The SETapp System provides a fast and economical way to create a professional installation process for your software products, data files, graphic images or whatever else you want to distribute. We have consequently prepared SETapp for installing large applications or tools. The system includes inter alia a [Visual INF File Builder](#), a [Pre-Loader](#), an [Installer](#) and an [Uninstaller](#).

The SETapp System uses a completely visual approach. You can point and click your way with the visual INF File Builder Infrobot to your distribution disk set. Our Point and Click development process preserves you from the complexity and tedium of typical Windows Installation Systems (there is no script language to learn).

The [Standard Version](#) eliminates the copyright message on the installation screen. It includes an Unlimited Application License, allowing each registered SETapp developer to create any number of installations. You can distribute the pre-loader, the installer and the uninstaller royalty-free to your customers. You only need to purchase one copy of SETapp for each developer who will use it.

The [Developer Version](#) of the SETapp Installation System includes not only all of the features of the standard version but A.R.I.S.1. (Automatic Release Improvement Service for one year). We will keep your tool up to date by sending you our next scheduled releases for 12 month!

## Note:

SETapp for Windows is a hit. The third quarter of 1996 was the most profitable in our organization history. While our profit probably wouldn't Bill Gates sneeze, for all of us, who have worked so hard on SETapp for Windows, it was gratifying to see the way you have responded to our product. Together, we will work to provide you with the quality toolware you need to create great installation projects.

## [Features](#)

[How to get an evaluation copy of SETapp](#)

[Upcoming Implementations](#)



# Reference Information

## Menu Commands

Information on each menu command in SETapp.

## Parts of the SETapp System

Information on each SETapp System Application.

## Message Index

Lists all the messages that can be displayed by SETapp.

# Using SETapp

## Basics

[The SETapp Workplace](#)

[Overview of the Installation process](#)

[Quick Access to Files and Functions](#)

[The Development Environment Tool Bar](#)

[The Pick List](#)

[The Popup Menu](#)

[The Filename Dialog Boxes](#)

[The Open Project Dialog](#)

[The New Project Dialog](#)

[The Save As Dialog](#)

[The Delete Dialog](#)

## Development Flow

[Compress Files](#)

[General Installation Options](#)

[Insert a Text Message](#)

[Create the Main Installation Objects \(MIOs\) - Data Room](#)

[Built-In Macros](#)

[File Scan Engine](#)

[INI Settings](#)

[Registration Database](#)

[Autoexec.bat Settings](#)

[Config.sys Settings](#)

[Run Settings](#)

[Build Settings](#)

[Bug Checker](#)

[Build Distribution Medium](#)

## Customer Information System (CUSIS)

[Product Information](#)

[Customer Information](#)

# Copyright Information (Shareware)

SETapp Copyright © 1995-1996 by Linder Software Systems  
All rights reserved.

## License Agreement

You should carefully read the following terms and conditions before using this software.

## Shareware Version

You are hereby licensed to use the Shareware Version of the software for a 21 day evaluation period; make as many copies of the Shareware version of this software and documentation as you wish; give exact copies of the original Shareware version to anyone and distribute the Shareware version of the software and documentation in its unmodified form via electronic means. There is no charge for any of the above.

You are specifically prohibited from charging, or requesting donations, for any such copies, however made; and from distributing the software and/or documentation with other products (commercial or otherwise) without prior written permission.

Unregistered use of SETapp after the 21-day evaluation period is in violation of federal copyright laws.

## Evaluation and Registration

This is not free software. This license allows you to use this software for evaluation purposes without charge for a period of 21 days. If you use this software after the 21 day evaluation period a registration fee is required.

## Disclaimer of Warranty

THIS SOFTWARE AND THE ACCOMPANYING FILES ARE SOLD "AS IS" AND WITHOUT WARRANTIES AS TO PERFORMANCE OF MERCHANTABILITY OR ANY OTHER WARRANTIES WHETHER EXPRESSED OR IMPLIED. Because of the various hardware and software environments into which SETapp may be put, NO WARRANTY OF FITNESS FOR A PARTICULAR PURPOSE IS OFFERED.

Good data processing procedure dictates that any program be thoroughly tested with non-critical data before relying on it. The user must assume the entire risk of using the program. ANY LIABILITY OF THE SELLER WILL BE LIMITED EXCLUSIVELY TO PRODUCT REPLACEMENT OR REFUND OF PURCHASE PRICE.

Linder Software Systems  
CIS: 101737,2760  
Internet: 101737.2760@compuserve.com

# Copyright Information (Registered Version)

Linder Software Systems License Agreement  
- Proof of License -

IMPORTANT - READ CAREFULLY BEFORE OPENING SOFTWARE PACKET(S). By opening the sealed packet(s) containing the software, you indicate your acceptance of the following Linder Software Systems GbR mbH License Agreement.

## SINGLE-USER PRODUCTS

This is a legal agreement between you (either an individual or an entity) and Linder Software Systems GbR mbH. By opening the sealed software packages and/or by using the SOFTWARE, you agree to be bound by the terms of this Agreement. If you do not agree to the terms of this Agreement, promptly return the unopened software packet(s) and the accompanying items (including printed materials and binders or other containers) to the place from which you obtained them for a full refund.

## LINDER SOFTWARE SYSTEMS SOFTWARE LICENSE

1. GRANT OF LICENSE. This License Agreement ("License") permits you to use one copy of the specified version of the Linder Software Systems software product identified above, which may include "online" or electronic documentation (the "SOFTWARE") on a single computer. The SOFTWARE is in "use" on a computer when it is loaded into temporary memory (i.e., RAM) or installed into permanent memory (e.g., hard disk CD-ROM, or other storage device) of that computer except that a copy installed on a network server for the sole purpose of distribution to other computers is not "in use". If the anticipated number of users of the SOFTWARE will exceed the number of applicable Licenses, then you must have a reasonable mechanism or process in place to ensure that the number of persons using the SOFTWARE concurrently does not exceed the number of Licenses. If the SOFTWARE is permanently installed on the hard disk or other storage device of a computer (other than a network server) and one person uses that computer more than 80% of the time it is in use, then that person may also use the SOFTWARE on a portable or home computer.

2. UPGRADES. If the SOFTWARE is an upgrade, you may use or transfer the SOFTWARE only in conjunction with the prior version(s) of the SOFTWARE.

3. COPYRIGHT. The SOFTWARE (including any images, "applets, photographs, animations, video audio, music, and text incorporated into the SOFTWARE) is owned by Linder Software Systems or its suppliers and is protected by Germany copyrights laws, United States copyright laws and international treaty provisions. Therefore, you must treat the SOFTWARE like any other copyrighted material (e.g., a book or musical recording) except that you may either (a) make one copy of the SOFTWARE solely for backup or archival purposes, or (b) transfer the SOFTWARE to a single hard disk provided you keep the original solely for backup or archival purposes. You may not copy the printed materials accompanying the SOFTWARE.

4. OTHER RESTRICTIONS. You may not rent or lease the SOFTWARE, but you may transfer the SOFTWARE and accompanying written materials on a permanent basis provided you retain no copies and the recipient agrees to the terms of this Agreement. If the SOFTWARE is an upgrade, any transfer must include the most recent upgrade and all prior versions. You may not reverse engineer, decompile, or disassemble the SOFTWARE, except to the extent such foregoing restriction is expressly prohibited by applicable law.

5. DUAL-MEDIA SOFTWARE. You may receive the SOFTWARE in more than one medium. Regardless of the type or size of medium you receive, you may use only the medium appropriate for your single-user computer. You may not use the other medium on another computer on loan, rent, lease, or transfer the disks to another user except as part of the permanent transfer (as provided above) of all SOFTWARE and printed materials, nor print copies of any user documentation provided in "online" or electronic form.

6. INSTALLATION SOFTWARE. If the SOFTWARE is a Linder Software Systems installation product,

then you have a royalty-free right to distribute the installer of the SOFTWARE. Linder Software Systems grants you a royalty-free right to distribute the installer of the SOFTWARE provided that you: (a) distribute the run-time modules only in conjunction with and as a part of your software product; (b) do not use Linder Software Systems name, logo, or trademark to market your software product; (c) include a valid copyright notice on your software product; and (d) agree to indemnify, hold harmless, and defend Linder Software Systems and its suppliers from and against any claims or lawsuits, including attorney's fees, that arise or result from the use or distribution of your software product. The "run-time modules" are those files in the SOFTWARE that are identified in the accompanying printed materials as required during execution of your software program. The run-time modules are limited to run-time and database drivers files. If required in the SOFTWARE documentation, you agree to display the designated patent notices on the packaging and in the README file of your software product.

### **Limited Warranty**

**LIMITED WARRANTY.** Linder Software Systems warrants that the SOFTWARE will perform substantially in accordance with the accompanying written materials for a period of thirty (30) days from the date of receipt. Any implied warranties on the SOFTWARE are limited to thirty (30) days. Some states/jurisdictions do not allow limitations on duration of an implied warranty, so the above limitation may not apply to you.

**CUSTOMER REMEDIES.** Linder Software Systems and its suppliers entire liability and your exclusive remedy shall be, at Linder Software Systems option, either (a) return of the price paid, or (b) repair or replacement of the SOFTWARE that does not meet Linder Software Systems Limited Warranty and which is returned to Linder Software Systems with a copy of your receipt. This Limited Warranty is void if failure of the SOFTWARE has resulted from accident, abuse, or misapplication. Any replacement SOFTWARE will be warranted for the original warranty period or thirty (30) days, whichever is longer. Outside the United States, neither these remedies nor any product services offered by Linder Software Systems are available without proof of purchase from an authorized non-U.S. source.

**NO OTHER WARRANTIES.** To the maximum extent permitted by applicable law, Linder Software Systems suppliers disclaim all other warranties, either express or implied, including warranties of merchantability and fitness for a particular purpose, with regard accompanying printed materials. This limited warranty gives you specific legal which vary from state/jurisdiction to state/jurisdiction.

**NO LIABILITY FOR CONSEQUENTIAL DAMAGES.** To the maximum extent permitted by applicable law, in no event shall Linder Software Systems or its suppliers be liable for any damages whatsoever (including without limitation, damages for loss of business profits, business interruption, loss of business information, or any other pecuniary loss) arising out of the use of or inability to use this Linder Software Systems product, even if Linder Software Systems has been advised of the possibility of such damages. Because some states/jurisdictions do not allow the exclusion or limitation of liability for consequential or incidental damages, the above limitation may not apply to you.

### **RESTRICTED RIGHTS**

Should you have any questions concerning this Agreement or if you desire to contact Linder Software Systems for any reason, please contact the Linder Software System subsidiary serving your country, or write: Linder Software Systems GbR mbH, 101737.2760@compuserve.com. **ATTENTION:** Use of the software program on the enclosed disks is subject to the terms of the Linder Software Systems License Agreement printed on the license card. You should not open this packet until you have read the Linder Software Systems License Agreement. By opening this packet, you signify that you have read the Linder Software Systems License Agreement and accept its terms.

### **REMINDER NOTE:**

When you get a new computer, you have a choice to make concerning your Linder Software System software.

You may setup your software on your new computer if you delete it from your old computer. - OR -


If you leave your software on your old computer, you need to purchase additional software for your new computer.

Linder Software Systems  
Email: [101737.2760@compuserve.com](mailto:101737.2760@compuserve.com)

# Infrobot's Menu Commands

You can use the visual INF File Builder Infrobot to create your masterpieces on the fly.

Infrobot uses a completely visual approach. You can point and click your way to your distribution disk set. Our Point and Click development process preserves you from the complexity and tedium of typical Windows Installation Systems (there is no script language to learn).

You can click on any part of the screen picture where a hand cursor  is displayed to get further information on that part



# Message Index



LSS#1404 - (Locked - Check 'Enable non-executables to PM' and retry)

LSS#2007 -

LSS#2008 - (Duplicated Key)

LSS#xxxx - (Please run the external conversion tool Conrobot 1900)

LSS#xxxx



# Upgrade from a Previous Version

Welcome to the fast track for Installation Development SETapp Release 1900 for Windows. Thank you for using SETapp before.

Release 1900 of SETapp for Windows fixed a number of bugs that were discovered in 1800. In addition to the bug fixes, there are several new features in SETapp for Windows that were not in release 1800:

- ◆ New Pre-Loader SETUP.EXE
- ◆ New Uninstaller UNINSTALL.EXE
- ◆ New Online-Help SETAPP.HLP
- ◆ New basic Customer Information System (\_CUSIS.DLL, \_GLOBAL.DLL)
- ◆ General fixes in SETAPP.EX\_
  - (see Infrobot changes)
  - The LOG file function INI-Old works.
  - Restart Windows/Reboot System works also under Windows 95 correct.
  - The ability to backup files before replacing has been added.
- ◆ General fixes in INFROBOT.EXE
  - Shortcuts are now available (e.g. CTRL+N to create a New Project).
  - On Aborted Add/Change most dialogs now offer to save changes.
  - Infrobot.ini is placed in the SETapp directory.

## Data Room

- Add non-executables to the PROGRAM MANAGER (PM) Browse.
  - Limitation:** all uncompressed extensions allowed, but HLP, EXE, COM, BAT, DOC, TXT, WRI compressed extensions only.
- Change or correct file specifications within the FILE ARCHIVE Browse by double clicking.
- The PM Browse Group Name Item size has been increased from 13 to 80 characters.
- Icon Path Name Item has been added to the PM Browse (not supported in this release).
- Icon Number Item has been added to the PM Browse (not supported in this release).

## Infrobot Preferences

- Check Box "Enable non-executable to PM" has been added.
- Check Box "Start-Up Pick List" has been added.
- Tab "Variables" has been added. Pre-define your Project Copyright
- You can specify the EXTENDED drive size.

## General Settings

- Copyright Item size has been increased from 50 to 80 characters.
- Main Group Name Item size has been increased from 13 to 80 characters.
- Check Box "Backup of Replaced Files" and Backup Directory entry has been added.

## RUN Settings

- The ability to define the file sequence has been added.

## Text Message

- A License Agreement function has been added (with buttons 'I Agree' and 'I do not agree').
- The ability to customize the Text Font and the Text Font Size has been added.
- The Text size has been increased from 2K to 10K

## Bug Checker

- The function 'View INF' has been added to have a look at the INSTALL.INF file.  
The function also enables to print the file.

[The Conversion Tool Conrobot](#)

[Upcoming Implementations](#)

[Revision History](#)

SETapp stands for **SET**up your **app**lications.

The price is only US\$ 99,-

The price is only US\$ 198,- (included free upgrades for one year)

# Common Questions

[Is SETapp free?](#)

[What is the Pre-Loader?](#)

[What is the Installer?](#)

[What is Infrobot?](#)

[What is the Uninstaller?](#)

[What is Contobot?](#)

[How to use project files prior release 1900?](#)

[How to insert a Project to the Pick List?](#)

[How to use compressed files?](#)

[How to add non-executables to the Program Manager?](#)

[How to modify only the INF file without building the masterpiece?](#)

[How to insert a license agreement?](#)

[How to reboot Windows after the installation process?](#)

[How to restart the computer system after the installation process?](#)

[How to check the Windows Version?](#)

[How to check the disk space?](#)

[How to add a PATH SPECIFICATION to the autoexec.bat?](#)

[How to change the BUFFER value in the config.sys?](#)

[How to distribute the installation?](#)

**Error LSS#1404**

# Conventions

## General:

- Choose the **Infrobot|Preferences** menu command means "open the Infrobot menu and select the Preferences option".
- Shortcut menus are available in a number of places using the secondary (normally right) hand mouse button. These assist you to get your work done more quickly.
- You are the software developer and you want to distribute a software package.

## Dialogs:

- When referring to checkboxes in dialogs, selected means that a X is displayed in the checkbox, and therefore that the option is on.

For example:  **Build Disk Set**

Not selected means that no X is displayed and therefore, that the option is off.

For example:  **Build Disk Set**

## Keyboard:

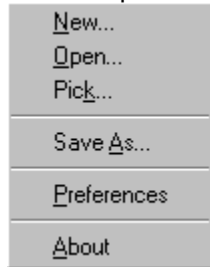
- All key names are shown in small capital letters. For example, the Control key is shown as CTRL.
- Keyboard combinations are denoted by a plus sign (+) placed between key names. For example, "press ALT + X" means that you must press and hold down the ALT key and at the same time press the X key.

## Mouse:

- The left mouse button is the primary mouse button unless you have configured it otherwise.
- "Point" means to position the mouse pointer until the tip of the pointer rests on whatever you want to point to on the screen.
- "Click" means to press and then immediately release the mouse button as you move the mouse.
- "Double-click" means point to an item, and then quickly press and release the mouse button twice.
- "Drag" means to point and then hold down the mouse button as you move the mouse.

Shortcut menus are popup menus available when you press the secondary mouse button in some areas of the screen. They contain commands related to the item you are working with. To choose an item after displaying a shortcut menu click a command name. To close a shortcut menu without choosing a command, click anywhere outside the shortcut menu or press ESC.

For example:





To get your evaluation copy of SETapp simply download the relevant files from one of the following on-line services (please note it is possible that the files mentioned will not be available due to the product being upgraded. In that case look for files of a similar name with different version numbers at the end):

**Internet:**

Via FTP from <ftp.winsite.com>. SETAPP19.ZIP is in the `pub/pc/win3/util` directory.


Via FTP from <ftp.simtel.com>. SETAPP19.ZIP is in the `pub/pc/win3/install` directory.

If you do not have access to either of these services then please contact Linder Software Systems for your free brochure and demo disk!

## Features

- The visual INF File Builder Infrobot creates the masterpiece on the fly.
- A pre-loader displays "Initializing SETapp..." during loading and decompressing the installer SETapp.
- Industry looking standard.
- Handling of multiple disk installation to install large applications or tools (up to 255 disks).
- The ability to prepare CD-ROM and Network installation projects.
- Infrobot can handle Time-Stamping in order to stamp the masterpieces to a required date and time.
- User supplied message (up to 10 KB) in the first dialog box -or-  
License Agreement Dialog with 'I Agree' and 'I do not agree' buttons.
- Multiple-textcolor.
- System configuration checking detects Windows version and free disk space.
- Subtree creation of directories.
- Include macros to define directory locations which would be impossible otherwise.
- Files can be uncompressed or compressed by using the Microsoft(TM) compress utility.
- Intelligent handling of identical filenames.
- Backup files before replacing.
- Build-In percentage bar presenting the installation status.
- SETapp creates groups and icons via DDE to the program manager.
- Place any value in any section of any .INI file.
- The ability for intelligent AUTOEXEC.BAT and CONFIG.SYS configuration setting.
- The ability to execute external programs.
- The ability to synchronize non-NE (New Executive) files.
- The ability to restart Windows if any drivers are installed.
- The ability to reboot the System.
- The entire installation can be logged to a file named INSTALL.LOG.
- The ability to uninstall a system (the uninstaller deletes its own).
- Support of 3D controls without Microsoft's CTL3D library.
- At the moment the installer SETapp is available in English and German language (Italian and Norwegian languages are in preparation).

# File Menu

You can click on any part of the screen picture where a hand cursor  is displayed you can get further information on that item



## File|New

Use this command to create a new installation project.

To open an existing project use the [File|Open](#) menu command.

**Note:**

It is not necessary to save an active project because of Infrobot's build-in quick save function.

**Shortcuts:**

Keys: CTRL+N

**See Also:**

[File|Open](#)

[File|Close](#)

# File|Open

Use this command to open a project that already exists.

- When you have completed work on a project and don't need it open you can use the [File|Close](#) menu command.

**Note:**

It is not necessary to save an active project because of Infrobot's build-in quick save function.

- To create a new project use the [File|New](#) menu command.

**Shortcuts:**

Keys: CTRL+O


**See Also:**

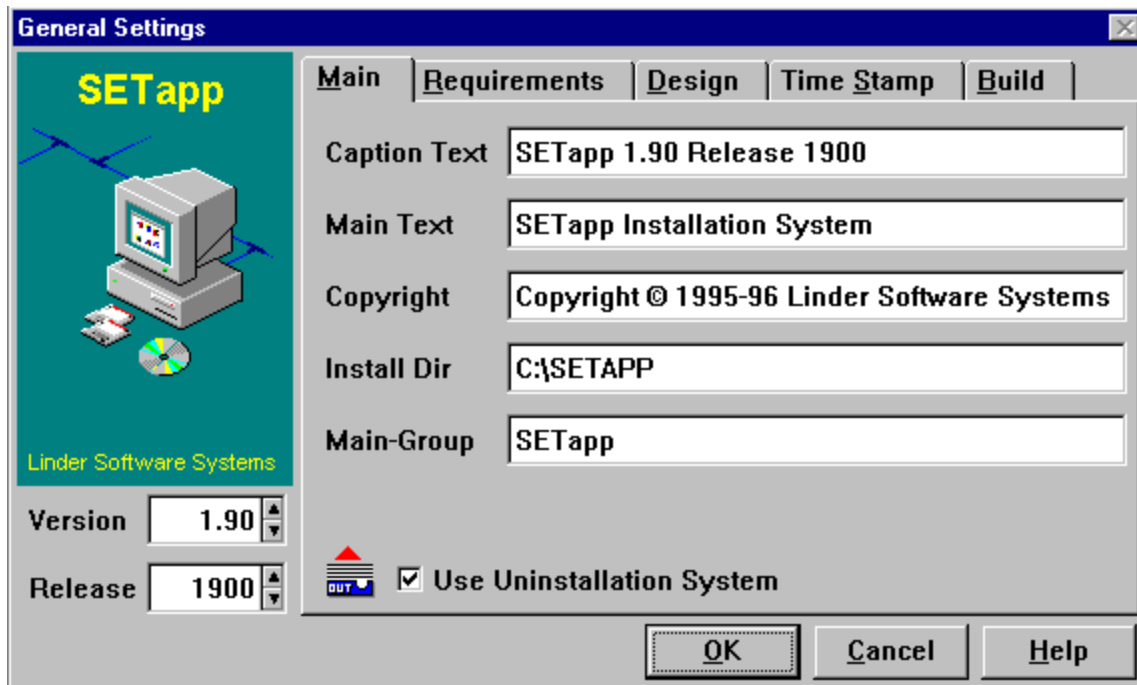
[File|New](#)

[File|Close](#)

[File|Pick](#)

# General Settings (Main)

You can click on any part of the following tab pictures where a hand cursor  is displayed to get further information on that item.



## Caption Text

This is used to specify the name or title of the application. This is what will appear in the title of the installation program's window during the installation process.

## Main Text

This appears at the top of the screen during the installation process.

## Copyright

This creates a message that is displayed at the bottom of the install dialog during the installation process.

**Tip** To insert a Copyright symbol © in the copyright field (or in any other output message), you can hold down the ALT key and type 0169 on your numeric keypad. To insert a Registered Trademark symbol ® type ALT 0174 (only for code page 850)

## Install Directory

This is used to specify the name of the Base Directory for the installation. The user will be able to change this at run time. If the Install Directory does not exist, SETapp will create it - and, if necessary, will create directories recursively. You only have to define your Installation Directory once in each project. The macro to relate to this base directory is #D.

## Main-Group

This is used to specify the DEFAULT name of the Program Manager Group in which the icons will be created. This can be the name of an existing group (e.g. „Main“, etc.) in which case, the items will just be added to the ones already in that group. However, you may specify a completely new group. If this does not exist, it will be created. This is the name of the Main-Group that pre-defines the group variable Infrobot uses to make your work faster and easier at the Infrobot Data Room.

### **Use Uninstall**

When this option is on, a compressed version of the SETapp Uninstall System will be copied to the first installation disk. Infrobot asked to add the Uninstall icon to the Program Manager browse. With Uninstall the end-user can remove your software from his system. Using Uninstall removes the icons from the Program Group and deletes the program files from the hard drive. Please note that it will not delete any files your application creates after being installed, nor will it delete files that have been directed to the Windows or System directories.


**Note:**

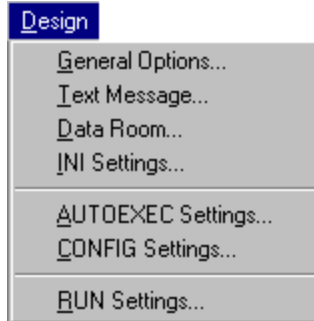
To activate the 'Use Uninstall' option you have to start the Data Room after checking 'Use Uninstall'.

### **Version/Release**

This fields provides a feature to help you better manage your project. Infrobot automatically places an internal version and release number to your project file. A new project automatically starts with Version 1.00 Release 1000. You can have a look to see the version number/release number in the generated INF file of your project. You should increase the version/release number, manually, whenever you make significant changes to a project.

# Design Menu

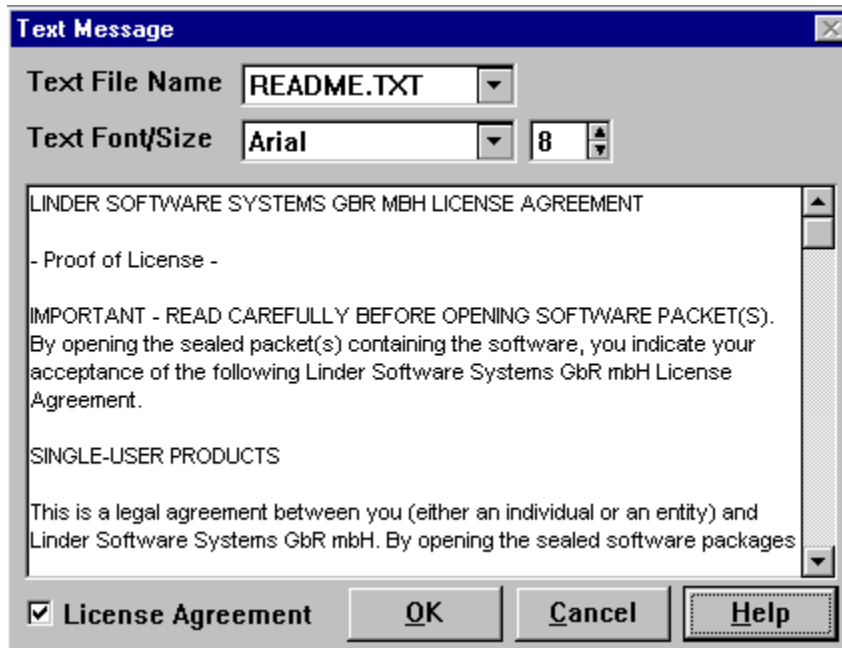
You can click on any part of the screen picture where a hand cursor  is displayed you can get further information on that item





## Text Editor

Use this function to edit the message that will be displayed on the first installation screen during the installation process. Doing this, simply select **Design|Text Message**.




You can define the name of the text file, e.g. README.TXT and a text with up to 10K. You are able to select a Text Font and the Text Font Size.

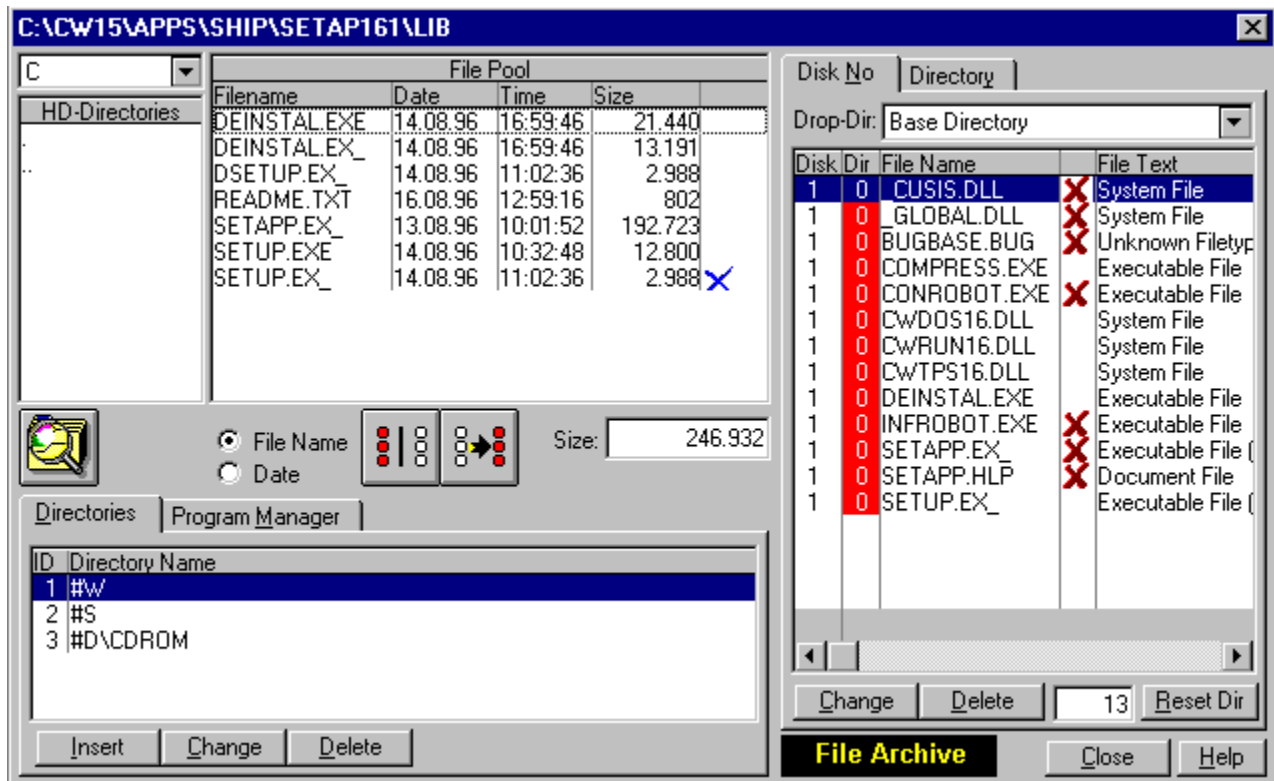
### License Agreement

If checked, the first installation dialog is not only a simple Text Message but a License Agreement dialog. The end-user has to press the **'I Agree'** button to continue the installation process.

# Data Room

You can click on any part of the screen picture where a hand cursor  is displayed to get further information on that item.

You can use the Data Room to create the Main Installation Objects (MIOs). Doing this, simply select **Design|Data Room**. You will notice that there are five browse boxes, two combo boxes and several buttons.



◆ The first combo box above the HD Directories Browse allows you to choose a specific hard disk drive or a network drive. You cannot select floppy disk drives (A or B).

◆ The HD Directories Browse allows you to "walk" the directory tree of a selected disk drive. To select a directory, DOUBLE CLICK on it and the contents will be displayed in the File Pool Browse.

◆ The File Pool Browse displays all files that are available in the currently selected directory. It displays also a number of general statistics about the files. Please note, that these fields are read-only and you cannot change them from within this dialog. The File Archive Browse defines all files that are currently defined in the actual project. To add a file to the File Archive drag it from the File Pool Browse and drop it to the File Archive Browse. To select all files click the TAG ALL button and press the COPY TAGED FILES button. All marked files will be added to the File Archive Browse. To select a number of files, mark the required files or press the TAG ALL button (to select all files) and unmark the unrequired files. The marked files will be added to the File Archive Browse by clicking the COPY TAGED FILES button.

**Note:** If a file has already been defined in the File Archive Browse it will be marked with a blue cross at the File Pool Browse.

◆ The Directories Browse displays defined directories that will be created on the end-user's system during the installation process. You can define the directory-id and the directory-specification. You can include macros to define directory locations which would be impossible otherwise. Simply place the desired macro at the beginning of the path-specification.

You can create many sub-directories in one command, if the sub-directories are in the same path. For example if you need to create c:\temp1\temp2 and neither temp1 nor temp2 exists, SETapp can create both directories in one command call.

**Note:**

All defined directories will be created at runtime.

◆ The second combo box is named Drop Dir. It allows you to select one of the already defined directories to determine the Infrobot's dropping process base directory. Select a directory and during the drag and drop process from the File Pool Browse to the File Archive Browse all files are handed over with the drop dir directory value. This is important if you have to define files with identical file names but different directories. In case of this you have to select a different drop dir for each identical file. The drop dir value 0 defines the user directory (#D).

◆ The File Archive Browse displays the project files. It stores disk-id, directory-id and file description. Infrobot predefines some standard file descriptions (also in case of compressed files) during the drag and drop process. You can change the description of a file at any time by editing the File Text or you can change the standard settings in the Infrobot Preferences Standard Tab.

<b>File Extension</b>	<b>Infrobot Description</b>
exe, bat, com,	Executable File
txt, wri, doc, hlp	Document File
dll, vbx	System File
jpg, gif, tga, bmp,	
tif, pcx, ico	Graphic File
underscore	Compressed

You can drag a file from the File Pool Browse and drop it to the File Archive Browse. The dropped file will be marked with a blue cross in the File Pool Browse and will be added to the File Archive Browse. To relate a file to a directory you can drag the specific directory from the Directories Browse and drop it to the file in the File Archive Browse. The directory-id will be added to the related file. To reset the directory-id highlight the specific file and press the RESET-DIR button. The file will be related (if possible) to the Installation Directory (Base Dir).

**Note:**

If an already defined file is not existing in the source directory (e.g. it was deleted or renamed) it will be marked with a red cross at the File Archive Browse. Please correct all "errors" by DOUBLE CLICK the item.

◆ The Program Manager Browse displays information about files that will be added to the Windows Program Manager during the installation process. Only drag the File Name from the File Archive Browse and drop it to the Program Manager Browse to add a specific file. To change settings please select the file and DOUBLE CLICK on it or press the CHANGE button. Then enter the name of the Program Group (usually pre-defined) and the Title Under Icon. The group and icon you enter will be added at installation runtime to the Windows Program Manager if you have the Make Group choice selected in the **Design| General Options**.

**Important:**

The Title Under Icon must be unique !! In this release Infrobot cannot detect duplicated Title Under Icons.




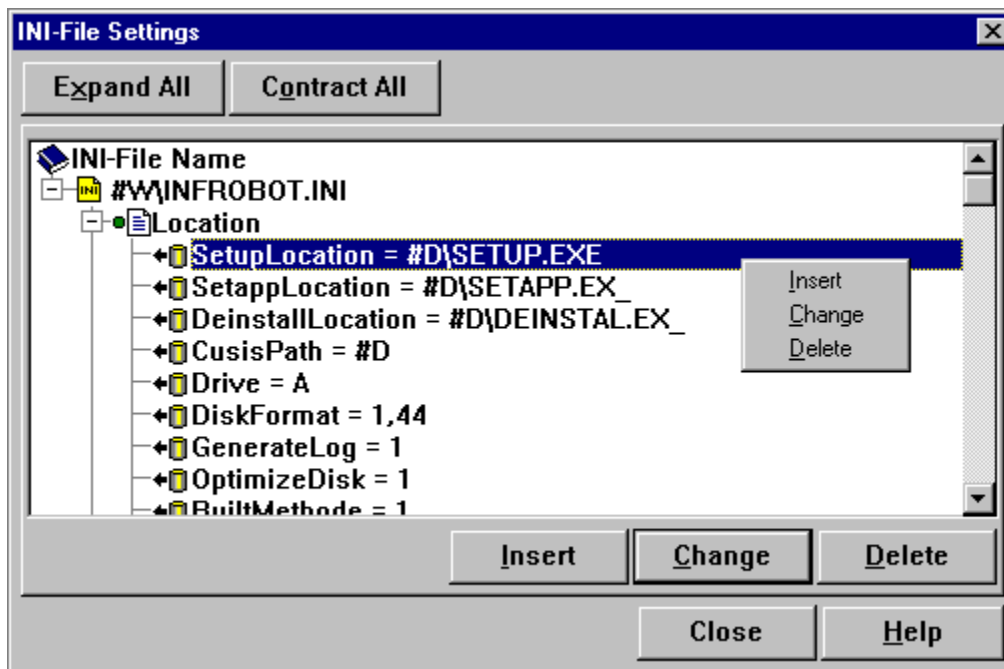
# INI Settings

Use **Design|INI Settings** to add, delete and modify the values in various Windows INI files.

**Note:**

You should **NOT** use this function to edit device entries in the SYSTEM.INI file! It should be used to edit the WIN.INI or your private INI files only.

You can click on any part of the screen picture where a hand cursor  is displayed to get further information on that part



You can DOUBLE CLICK to a record to change or a RIGHT CLICK calls a popup menu to insert, change, or delete records. A third method to edit a record is to use the Relation Tree Update Buttons (Insert, Change, and Delete).

Make INI-Settings

# RUN-Settings

Use **Design|RUN Settings** to define external DOS or Windows programs that are executed immediately after the installation is complete.

If running DOS applications (compress.exe, batch files and so on) please check the NE Checking box in the **General Setting Build Tab** to synchronize the DOS programs. When the Run File command executes, the new DOS program is loaded as the ontop and active program until termination. Windows applications are loaded and executed in the background. After SETapp terminates the already loaded applications will be still active.

The Run File field specifies the full qualified name of the file to run. You can use internal macros at the beginning of the field.

If the string does not contain a path, Windows searches the directories in this order:

1. The current directory.
2. The Windows directory (the directory containing WIN.COM).
3. The Windows system directory (the directory containing such system files as GDI.EXE).
4. The directory containing the executable file for the current task.
5. The directories listed in the PATH environment variable.
6. The directories mapped in a network.

The Command Line field specifies the optional parameters for the application to be run. You can use internal macros at every position of the field.

You can DOUBLE CLICK to a record in the Dialog to change or a RIGHT CLICK calls a popup menu to insert, change, or delete records. A third method to edit a record is to use the Browse Update Buttons (Insert, Change, and Delete).

The Change and Delete buttons correspond to the currently highlighted record.  
The Insert button adds a run entry.

## Note:

If running DOS application please check the NE Checking box.

## Important:

Please define the external applications with extension, e.g. notepad.exe. If the extension is missing SETapp cannot detect New Executive (NE) files !

See also:

How to execute a batch file?

# Bug-Checker

Before you choose **Build|Master Disk**, try to make sure that EVERYTHING is set up the way you want.

The Bug Checker detects syntax errors, e.g. a missing icon description or a file name defined in the File Archive but not any longer included in the File Pool. Click the *Start* button to check the syntax. If the "Final Check Result" status is "READY TO SHIP" you can build the disk set.

**Note:**

The Bug Checker also includes the disk# optimizing code.

If you press the "View INF" button you can have look at the INSTALL.INF file.  
The "View INF" function also enables to print the file.

## File Scan Engine

The File Scan Engine enables you to search for a specific file. This is mainly important if you don't know the location of a file.


**Note:** In this SETapp release the File Scan Engine is restricted to Hard-Disk C only. This limitation will be fixed in a future release.

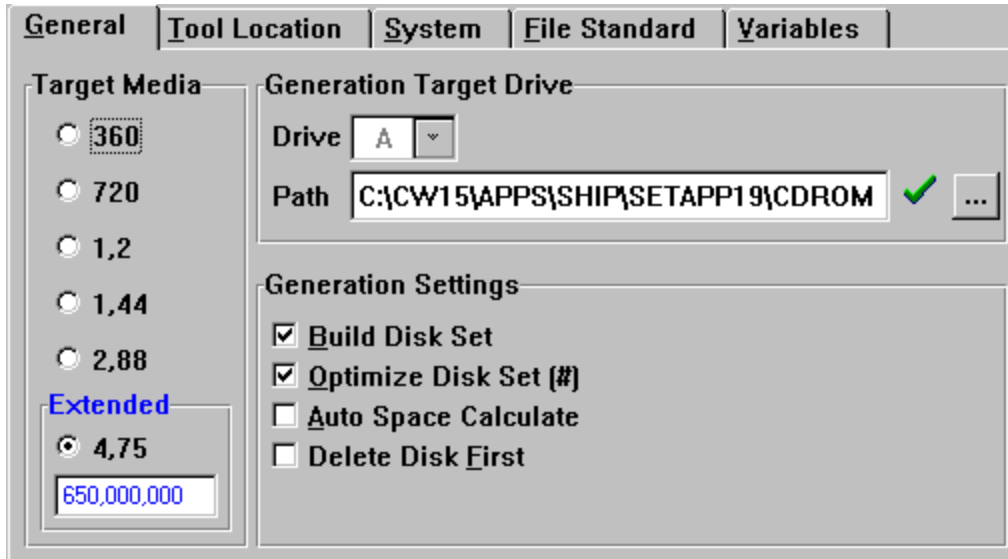


# Project Memo



# Infrobot Preferences (General)

You can click on any part of the following tab pictures where a hand cursor  is displayed to get further information on that item.



## Disk Format

Specifies the Target Disk Format. Infrobot supports the following formats:

360	-	Floppy Disk max. 360 KB
720	-	Floppy Disk max. 720 KB
1,2	-	Floppy Disk max. 1,2 MB
1,44	-	Floppy Disk max. 1,44 MB
2,88	-	Floppy Disk max. 2,88 MB
4,75	-	CD-ROM 4,75 inch or Network (you can specify the medium size)

## Build Target Drive

Specifies the drive to which Infrobot will build the masterpiece. Infrobot will not attend to this setting if building a CD-ROM target!

## Disk Path

Specifies a default path name that will be used to build a CD-ROM masterpiece. Press the ellipsis (...) button to choose the path with the Infrobot Directory dialog. The default value is the CDROM folder in the SETAPP directory created during the SETapp installation. During the masterpiece generation process all files will be installed to this path. You can use this option for installation testing too.

## Settings

### Build Disk Set

If this option is checked, Infrobot builds the complete installation masterpiece for you.

If it is unchecked, only the INF file and (optional) the readme file will be generated to the Target drive. You can use the unchecked option to change descriptions, options, requirements and so on. Please do not add a file to the File Archive without a "Full Generation".

### Optimize Disk Set

If this option is on, Infrobot builds the complete installation masterpiece in consideration of the minimum of installation disks. The pre-defined Disk-ID will not receive attention.

If unchecked the masterpiece will be build in view of the pre-defined Disk ID. **To optimize the disk set**

**you have to start the Bug Checker before building the masterpieces.**

Auto Calc

If this option is on, Infrobot calculates the required space automatically plus 5% during compiling the project (with the Bug Checker).

**Note:**

Please do not use this option in combination with compressed files.

Delete Disk First

If checked, Infrobot deletes the target disk before building the project files. Infrobot will not delete entries of hard-drives.

**Note:**

In this release Infrobot could not delete sub-directories nor the contents of sub-directories. This will be fixed in a future release.

## Pick|File

The Pick File Dialog is a specialized **Customer Information Used Files** list. As you begin using Infrobot for multiple projects, you'll appreciate this dialog because it quickly locates the files you need for any given project.

The Pick File Dialog provides the following buttons:

- Select**            Opens the currently selected file.
- New**                Allows you to create a project.
- Open**                Allows you to open a project not on the Pick list.

[How to insert a Project to the Pick List?](#)

# File|Close

Use this command to close the active project.

## Shortcuts:

Mouse: Double click the Close icon on the project's window:



Keys: CTRL+F4

## See Also:

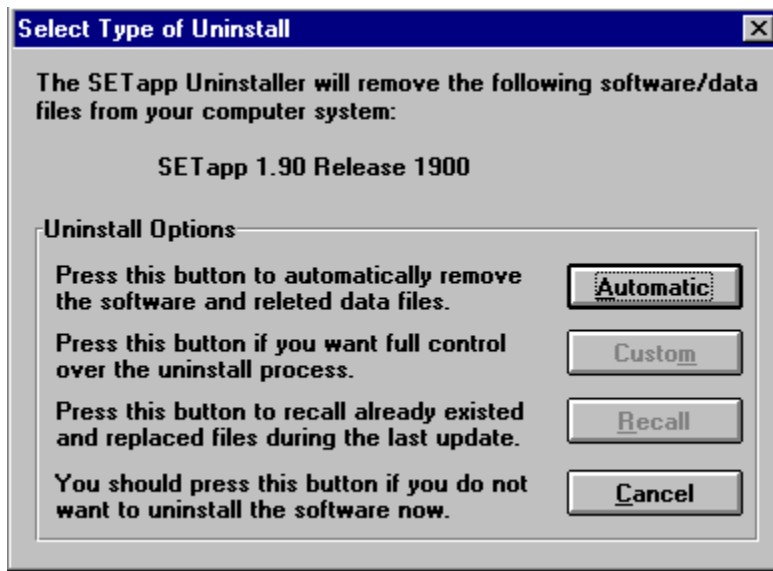
[File|Save As...](#)

[File|Exit](#)

# Uninstaller

Many Windows programs are easy to install but most are not easy to remove, because of INI files and DLLs thrown all over the place. A log-file is created during the installation that describes the changes that were made to the destination system. The installation log is called INSTALL.LOG and it is placed in the Base Directory (the user's destination directory).

The SETapp Uninstaller will undo anything that SETapp did on the system during the installation. This includes deleting the installed files, any directories created by SETapp, any Program Manager groups or icons created by SETapp and any entries made into INI files by SETapp, etc.



We are proud to note that we have implemented our new algorithm (Linder Self Eraser Algorithm) that enables the uninstaller to delete its own and the directory that contains the uninstal.exe.

## Note:

- Unless the INI files are in the program's home directory, the INI files themselves will NOT be deleted. Only the entries made into them by SETapp will be deleted. This is because entries could have been made into existing INI files, and deleting such files will be disastrous.
- Shared files installed into the Windows or Windows System directory are a special case. These files will not be deleted.
- Having an uninstaller is one of the requirements for the Windows 95 Logo.

# Print Project



# Parts of the SETapp System

## INFROBOT.EXE

The visual INF File Builder

## SETUP.EXE

The Pre-Loader

## SETAPP.EX

The Installer

## UNINSTAL.EXE

The Uninstaller

## CONROBOT.EXE

The Project Conversion Tool

## CONVERT.EXE

The CUSIS Conversion Tool (only for users of SETapp prior Release 1900)



# Project Conversion Tool

The project conversion utility Conrobot lets you convert the records in an existing project file to a new file format.

## Tip

**It is always a good idea to make backup copies of your files before running conversion process.**

The conversion tool in this 1900 Release converts files containing 1500, 1600, 1601, 1700, 1701, 1800, 1900 project data only. Our conversion initial position is the 1500 Release.

The project file should NOT be open when running the utility. Ensure that the file is closed before starting the utility.

To convert a project file format to the new 1900 project file run Conrobot.

1. Press the START button to select a project file from the Standard Open File dialog.
2. Press the OK button to convert the file.

If the "old" file definition is valid, Conrobot converts the project to a new file format.

## Warning

**If you convert a project file to a new file format you cannot open it again in earlier versions of SETapp.**

## Note:

The Conversion Tool cannot handle project formats prior release 1500 nor files that were created with a SETapp Beta Version.

# Late Breaking News

Welcome to the SETapp Community!

<a href="#">New Users</a>	<a href="#">Limitations</a>	<a href="#">Technical Support</a>	<a href="#">License Information</a>	<a href="#">New in 1900</a>
---------------------------	-----------------------------	-----------------------------------	-------------------------------------	-----------------------------

# Upcoming Implementations

You become an important part of the development process by providing suggestions and feedback on the usability and functionality of the product. Please e-mail your ideas or bug descriptions to [101737.2760@compuserve.com](mailto:101737.2760@compuserve.com). Thank you !

## **What's next ?**

---

- Support for Windows Registration Database.
- Full Featured Project Reporting Tool.
- Image (BMP etc.) Support.
- Native 32-Bit visual INF File Builder.
- Native 32-Bit pre-loader, installer and uninstaller.
- Win95 Control Panel uninstallation integration.
- Native look'n'feel under Win95 and NT.
- Support for Internationalization.
- Support for Version Checking (DLL, VBX, EXE).
- Built-In Infrobot Compression (we are still working on other compression methods).
- Full Featured Customer Information System with an integrated Order Processing System named CUSIS Pro.
- See Known Limitations (\*)

## Product Price List

All prices are Linder listed prices and are subject to change. **A.Ambry** pricing is for web delivery via [Albert's Ambry - http://www.alberts.com](http://www.alberts.com).

**Linder** pricing is for web delivery via <http://members.aol.com/LinderSoft>. Minor updates (x001, x002,...releases) are available free of charge from our Download Support section. Please send an e-mail to get the download password.

<b>A.Ambry</b>	<b>Linder</b>	<b>Product</b>
<b>\$99</b>	\$99	SETapp <u>Standard</u> 1.90 Release 1900
<b>\$198</b>	\$198	SETapp <u>Developer</u> 1.90 Release 1900
N/A	\$35	Upgrade 1.80 to 1.90
N/A	\$50	Update 1.x to 1.90
N/A	\$120	Update Standard to Developer Edition
N/A	<b>FREE</b>	Minor Updates
N/A	\$30	Printed Manual
N/A	<b>FREE</b>	English Pre-Loader and Installer 1.90 to German language

**Note:**

You can receive the SETapp System also via snail mail. Please e-mail to [101737.2760@compuserve.com](mailto:101737.2760@compuserve.com) to get an air-mail price list.

[How To Register?](#)

[How To Contact Linder Software?](#)

## Config.sys Settings

Use **Design|CONFIG Settings** to add, delete and modify the commands or values on the end-users CONFIG.SYS file. A backup file named CONFIG.999 will be created automatically.

The following descriptions apply to the target CONFIG.SYS file:

If the Section Line already exists and the Command Line matches the already defined command exactly, it will not be re-added.

If the Section Line already exists and the Command Line and the already defined command are different, the Command Line will replace the old value.

If the Section Line already exists and the Command Value is numeric, only a lower value will be replaced.

The handling of DEVICE is a special case. To add a device please enter DEVICE= to the Section Line and enter the device-specification to the Command Line. You can use macros, e.g. #D instead of the user defined directory. If the device already exist, it will not be re-added.

You can DOUBLE CLICK to a record in the Dialog to change or a RIGHT CLICK calls a popup menu to insert, change, or delete records. A third method to edit a record is to use the Browse Update Buttons (Insert, Change, and Delete).

The Change and Delete buttons correspond to the currently highlighted record.

The Insert button adds a config.sys entry.

# Make Ini Settings

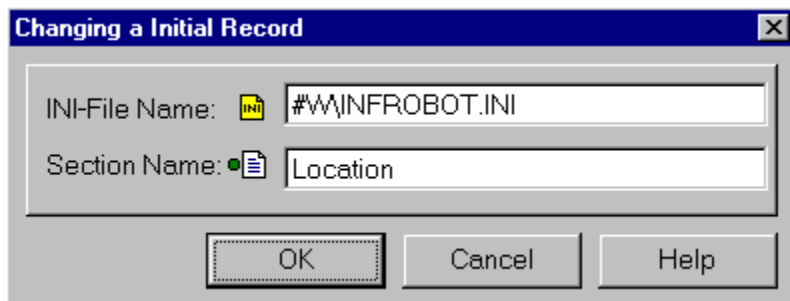


- **INI File Name**

This entry specifies the fully qualified path-name of the INI file. You can include Macros to enable defining directory locations that would be impossible otherwise. Simply place the desired Macro at the beginning of the entry.

If the INI file does not exist, it will be created.

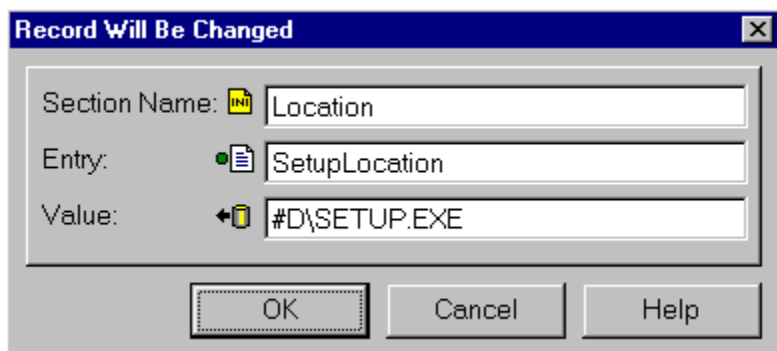
If a path specification (or a macro) is omitted, the INI File Name will be placed in the Windows directory.



- **Section Name**

This entry specifies the section that the INI command will be applied to, such as [Fonts] or [Desktop]. Please note, that you do NOT have to include the [] brackets when specifying the section - they will be added for you. If the section does not exist in the INI file, SETapp will create the section for you.

If the section does not exist, it will be created. The name of the section is case-insensitive.



- **Entry**

This entry specifies the key that will be used to refer to the value contained in a section of the INI file. If the key does not already exist in the section it will be added to that section and will be associated with the value. If the key already exists, the value will be replaced with the contents of the value.

- **Value**

This entry specifies the string that will be associated with the key specified in the key-attribute. The string that you specify will replace any string that is already associated with the key. You can include Macros to enable defining directory locations that would be impossible otherwise. Simply place the desired Macro at the beginning of the entry.

***Blank Line***

Enter a blank value line to delete the hole section.

**Ini Section Name**



Expands the INI tree and displays all defined information.

Contracts the INI tree. After that only the INI file names are displayed.

Correspond to the currently highlighted record.

Adds a child record (the next level down the tree structure).

# Installation Process

There is a two step process in the installation. First you (the programmer) uses SETapp's Infrobot to create an installation project. After you have created the installation project, you press the "Build Installation Disk" button to copy all of the files and the installation system onto the Distribution Medium.

**Note:**

**There is not one script item to write!**

Your client (the installer) then receives the installation project from you either via modem or floppy. They run the installation system SETapp under Windows (either via Program Manager File -> Run or File Manager double-click). The installation system then copies the files onto the clients computer.

The following graphic describes the installation process:



# Customer Information System (CUSIS)

The Customer Information System (CUSIS) contains a basic package to manage all your Software Installation Projects. You can manage Product Information and Customer Information to Installations you are shipping out with Linder SETapp.

**Note:**

If you are running a SETapp Version prior Release 1900 please convert your older CUSIS.LIN file to the new format. To convert this file please run the CONVERT.EXE system.

# Known Limitations

We try to fix the following marked (\*) known limitations as soon as possible.

- ◆ **Installer**
  - (\*) An early abort of the installation process leaves the already installed files on the host system.
  - (\*) If you suppress the new INSTALL.LOG generation to ship upgrades, bug-fixes or patches you cannot add or modify single INSTALL.LOG entries.
  - It is possible that SETapp cannot run on older monochrome Laptop displays.
  
- ◆ **INF File Builder**
  - (\*) Infrobot cannot delete sub-directories or entries in sub-directories during the masterpiece generation.
  
- ◆ **Uninstaller**
  - (\*) The Uninstaller cannot handle the LOG entry 'File Save:' to rebuilt replaced files yet.
  - (\*) The function 'Custom' to keep full control over the installation process has not been implemented yet.
  
- ◆ **Conrobot**
  - The Conversion Tool cannot handle project formats prior release 1500 nor files that were created with a SETapp Beta Version.

# Popup Menu

Access the popup menu by RIGHT-CLICKING the main window. All of the most recently used commands are available. To choose the command you want, click the command.



**Tip** To close a shortcut menu without choosing a command, click anywhere outside the shortcut menu or press ESC.

**See Also:**  
[The SETapp Workplace](#)



# The SETapp Workplace

Overview

**Working with Dialogs and commands**

Tabbed Dialogs

Shortcut menus

# Overview of the SETapp Workplace

The SETapp Workplace is what you see on your Infrobot screen. This includes toolbars, editors and the status bar. The SETapp Workplace also includes elements such as menu commands, dialog boxes, and windows.

SETapp makes it very easy to learn about the workplace. To learn about a screen element, click the Help button on the main toolbar, or press F1. When the mouse pointer changes to an arrow and a question mark, point at the screen element you want information on and then click. SETapp displays information on that screen item.

**See Also:**

[The SETapp Workplace](#)

## Tabbed Dialogs

Tabbed dialogs are a unique way of working with dialog boxes. They allow related options to be displayed in the same dialog. This reduces the number of different dialogs that you have to work with!



◆ To change the current tab, click the tab or TAB until the tabs have the focus. Then use the arrow keys to change tab.

### See Also:

[The SETapp Workplace](#)

# How to find Help

This documentation assumes that you are familiar with the Windows environment and how to use help files (as an end user). If are not familiar with either of these requirements please see your Windows manual and the how to use help file.

## Getting Help

You can get help in several ways. For example you can use the Help button on the toolbar to get context-sensitive help about items on the screen and commands. You can press F1 in every dialog box and message window to get help on that message or dialog. You can also use the **Help|Contents** menu command to display the help file contents.

## Searching for a specific command

You can use the Search feature of SETapp to quickly find information about a specific task or feature. To display the search dialog do one of the following:

- ◆ Use the **Help|Search for Help On...** menu command
- ◆ From within SETapp click on the Search button in the button bar.

With the Search Dialog displayed in SETapp you can type the keyword that you want to search for or pick from the list of keywords.

## Context-Sensitive Help

To learn about an item on the screen, click the Help Button on the main toolbar. When the pointer changes to a question mark you can choose the command or click on the window item you would like more information about. SETapp will then display the help topic for the command or window item you selected.

## General Settings (Requirements)

<b>M</b> ain	<b>R</b> equirements	<b>D</b> esign	<b>T</b> ime Stamp	<b>B</b> uild
Windows Version Checking	3.10	▼		
Free Disk Space Checking	0	▲ ▼	Bytes	

### Windows Version Checking

You can specify the minimum required version of Microsoft Windows. If you want to support only Windows 95 in the 16-Bit mode please select 3.95. If the detected Windows Version is less than the estimate, SETapp will warn user's and does not allow them to continue.

To disable Windows Version checking please select the **none** value

### Free Disk Space Checking

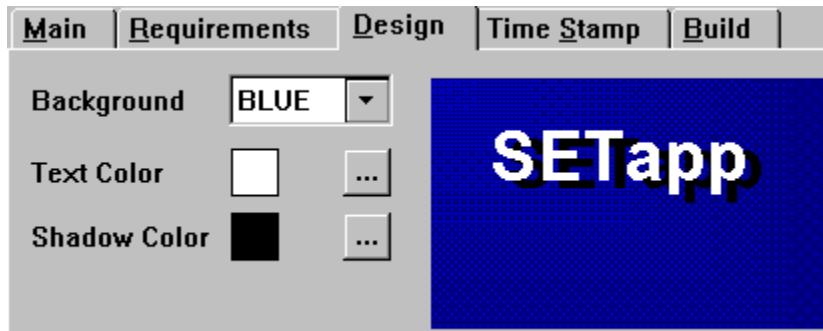
You can specify the minimum required hard-drive space in bytes. Calculating the available disk space is always difficult. You can't simply compute the free bytes on the disk and compare that number to the amount of space your software requires because DOS stores files in clusters. If a hard disk's cluster size is 2K, for example, each file stores in multiples of 2K. A 1-byte file takes 2K; so does a 1K file. A 3900-byte file requires 4K. Therefore, you should compute space requirements for each file based on the target hard disk's cluster size and compare the number of clusters.

However, this usually isn't worth the trouble. If the user employs a disk-compression program (Stacker, for example), the numbers are meaningless. Compression programs report an estimated free space that may be way off, depending on the nature of the files you store. There is no way to know how much actual space you have until you use it.

As a compromise, we usually compute an estimated free space and compare it to the space available on the disk. If the free space is less than the estimate, we'll warn users, but allow them to continue. Although not an optimal solution, this technique works in practice.

If the available disk space during the installation process is insufficient, than the message *Installation errors detected. Continue System Modification* will be displayed.

## General Settings (Design)



### **Background**

This can be used to customize the background color of the main Installer window. The default value is the blue background.

### **TextColor**

This can be used to customize the text color of the text in the main Installer window. The default value is white text color.

### **ShadowColor**

This can be used to customize the shadow (background) color of the text in the main Installer window. The default value is white text and black shadow.

# General Settings (Time)

The screenshot shows a software interface with five tabs: Main, Requirements, Design, Time Stamp, and Build. The 'Time Stamp' tab is active. It contains two sections. The first section, 'Stamp Method', has three radio buttons: 'Original File Time', 'Individual File Time' (which is selected), and 'Generation File Time'. The second section, 'Individual File Time', contains a date field with three spinners showing '01', '11', and '1996', and a time field with three spinners showing '01', '00', and '00'.

## Stamp Method

### Original File Time

If this option is on, Infrobot will stamp the original source date and time to the target file if generating the masterpieces.

### Individual File Time

If checked, Infrobot will stamp a specific date and time to the files if generating the masterpieces.

### Generation File Time

If checked, Infrobot generates the masterpieces and stamps the files automatically with the actual time.

# General Settings (Build)

The screenshot shows a dialog box with five tabs: 'Main', 'Requirements', 'Design', 'Time Stamp', and 'Build'. The 'Build' tab is active. It contains several checked and unchecked checkboxes. At the bottom, there is a text field labeled 'Backup Directory' containing the text 'BACKUP'.

Option	Checked
Make Groups and Icons	Yes
Restart Windows	No
Reboot System	No
File Exist Warning	Yes
Generate Install LOG	Yes
New Executive Checking	Yes
Backup of Replaced Files	Yes

Backup Directory:

## Make Group

If checked, the user is told that SETapp will create all defined Groups and Icons to the Windows Program Manager automatically. User can cancel this action.

## Restart Windows

If checked, the user is told that the installation will shut down and Windows will be restarted. User can cancel this action. In case of cancelation, the installation suggests to reset Windows before using your software. If the checkbox is unchecked, Windows will not be restarted. The restart Windows feature will especially be useful if you have made changes to the user's system that will only take effect when Windows is started up such e.g. changes to .INI files, system files or drives.

## Reboot System

If checked, the user is told that the installation will shut down Windows and that the computer system will be rebooted. User can cancel this action. If the checkbox is unchecked, the System will not be rebooted. The reboot feature will especially be useful if you have made changes to the user's system that will only take effect when the system is started up such e.g. changes to AUTOEXEC.BAT and CONFIG.SYS.

## Generate LOG

If checked, SETapp will generate a INSTALL.LOG file during the installation process.

In case of delivering a patch or an upgrade that only replaces files (no files will be added to the system) than uncheck this function.

We are still working on a solution to add single entries to an existing LOG.

## File Exist Warning

If checked, the installer SETapp warns the end-user during the installation process if a certain file with a equal or later date exists on the destination computer system. This can be useful in network installations or if detecting previous versions of software.

## NE Checking

If running external DOS applications (compress.exe, batch files and so on) please check this box to synchronize the DOS programs. If the Run File command executes, the DOS program is loaded as the ontop and active program until termination. Windows applications are loaded and executed in the background. After SETapp terminates the already loaded applications will be still active.

## Backup of Replaced Files



If checked, all files replaced by the installation will be backed up first.

**Backup Directory**

If you use the function 'Backup of Replaced Files', all files replaced by the installation will be placed into that directory.

# Macros

The following macro descriptions are the currently supported macros in this release.

**Note:**

Please do not use a colon ':' at the end of the macro, e.g. #W and not #W: and do not use a backslash '\' at the end of a macro **if there is no path specification after it**, e.g. #W and not #W\ but #W\temp1.

◆ Windows Directory

**#W enables defining the user's WINDOWS directory**

The Windows directory contains such files as Windows applications, initialization files, and help files. The Windows directory is the only directory where an application should create files. If the user is running a shared version of Windows, the Windows directory is the *only* directory guaranteed private to the user. The path this function retrieves does not end with a backslash unless the Windows directory is the root directory. For example, if the Windows directory is named WINDOWS on drive C, the path retrieved by this function is C:\WINDOWS. If Windows is installed in the root directory of drive C, the path retrieved is C:\.

◆ Systems Directory

**#S enables defining the user's SYSTEM directory**

The system directory contains such files as Windows libraries, drivers, and font files. Applications should *not* create files in the system directory. If the user is running a shared version of Windows, the application will not have write access to the system directory. The path that this function retrieves does not end with a backslash unless the system directory is the root directory. For example, if the system directory is named WINDOWS\SYSTEM on drive C, the path of the system directory retrieved by this function is C:\WINDOWS\SYSTEM.

◆ User Defined Directory

**#D the directory in which the installation actually occurs.**

# Compress Files

You can compress your files using the Microsoft Compress utility.

Compress (COMPRESS.EXE) creates compressed versions of one or more files. The resulting files are typically 25 to 45 percent smaller than the original files.

Command-line syntax for Compress is as follows:

**compress [/?]/[r] source destination**

Following are command-line options and parameters for Compress:

<code>/?</code>	Displays information about how to use Compress.
<code>/r</code>	Specifies that compressed files should be renamed.
Source	Specifies the source filename. The name can include a drive letter, a directory path, or both; and it can contain wildcards.
Destination	Specifies the destination. This parameter can consist of a directory (with optional drive letter), a filename, or any combination of the two.

If the source parameter contains wildcards and the destination parameter does not specify only a directory, the `/r` option must be used.

If the destination parameter does not contain a filename, Compress uses the filename or filenames specified by the source parameter when Compress copies the file or files to the location specified by the destination parameter.

**Note:**

To use compressed files within the SETapp System the **compress -r** command must be used.

# File|Exit

Use this command to end your Infrobot session. You can also use the Close command on the application Control menu as shown below.

**Note:**

It is not necessary to save an active project because of Infrobot's build-in saveing.

**Shortcuts:**

Mouse: Double-click the application's Control menu button.



Keys: ALT+F4

## File|Save As..

Use this command to save and name the active project.

### Note:

It is not necessary to save an active project because of Infrobot's build-in quick save function.

### Warning

Do **NOT** rename a project using a DOS command. Use Save As.. to rename an existing project. After renaming you can delete the source project (if not longer required).

### See Also:

File|New

File|Open

File|Delete

# File|Delete

Use this command to delete a project.

## Shortcuts:

Keys: CTRL+D

## See Also:

[File|Save As...](#)

## License Information

◆ A registered SETapp for Windows user **cannot** redistribute the following files outside of his/her organization.

INFROBOT.EXE  
CWRUN16.DLL  
CWTPS16.DLL  
CWDOS16.DLL  
CWASC16.DLL  
\_CUSIS.DLL  
\_GLOBAL.DLL  
SETAPP.HLP  
BUGBASE.BUG  
CONROBOT.EXE

◆ A registered SETapp for Windows user **can** redistribute the following files outside of his/her organization.

SETAPP.EX\_  
UNINSTAL.EX\_  
SETUP.EXE

---

Copyright © 1995,1996 Linder Software Systems, Germany  
Copyright © 1996 Friedrich Linder

All rights reserved worldwide

# Registration Database

NOT SUPPORTED IN THIS RELEASE.

We hope that we are able to support this function in release 190x but at the latest in release 2000.

You can e-mail to [101737.2760@compuserve.com](mailto:101737.2760@compuserve.com) to come to know the development status.

Linder Software Systems, Nov. 4, 1996



# Autoexec.bat Settings

Use **Design|AUTOEXEC Settings** to add, delete and modify the commands or values on the end-users AUTOEXEC.BAT file. A backup file named AUTOEXEC.999 will be created automatically.

The following descriptions apply to the target AUTOEXEC.BAT file:

If the Section Line already exists and the Command Line matches the already defined command exactly, it will not be re-added.

If the Section Line already exists and the Command Line and the already defined command are different, the Command Line will replace the old value.

If the Section Line already exists and the Command Value is numeric (not followed by character), only a lower value will be replaced.

The handling of PATH is a special case. To add a directory specification to the PATH environment variable please enter PATH= to the Section Line and enter the path-specification to the Command Line. SETapp handles the existence respective non-existence of semi-colon at the end of path-specifications automatically.

You can use internal macros, e.g. #D instead of the user defined directory. If the path already exist, it will not be re-added.

You can DOUBLE CLICK to a record in the Dialog to change or a RIGHT CLICK calls a popup menu to insert, change, or delete records. A third method to edit a record is to use the Browse Update Buttons (Insert, Change, and Delete).

The Change and Delete buttons correspond to the currently highlighted record.

The Insert button adds a autoexec.bat entry.

Enables you to tag or untag all files in the File Pool.

Enables you to add all tagged files to the File Archive.

Enables you to find the location of a file on the hard-disk drive.

## Infrobot Preferences (Tool Location)

General	Tool Location	System	File Standard	Variables
Setup	<input type="text" value="C:\CW15\APPS\SHIP\SETAPP19\SETUP.EXE"/>	✓	...	
SETapp	<input type="text" value="C:\CW15\APPS\SHIP\SETAPP19\SOURCE\SETAPP.EX_"/>	✓	...	
Uninstall	<input type="text" value="C:\CW15\APPS\SHIP\SETAPP19\UNINSTAL.EX_"/>	✓	...	
Cusis	<input type="text" value="C:\CW15\APPS\SHIP\SETAPP19"/>	✓	...	

### Setup

The Pre-Loader is required to start the installation on the target system. Press the ellipsis (...) button to select the SETUP.EXE file with the standard Open File Dialog.

### SETapp

The Installer is the compressed installation system file. Press the ellipsis (...) button to select the SETAPP.EX\_ file with the standard Open File Dialog.

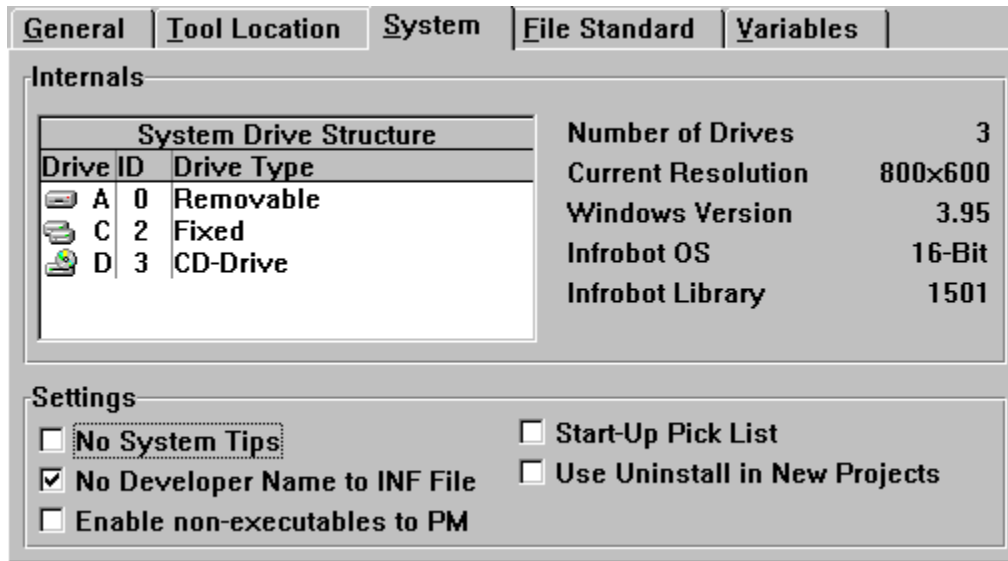
### Uninstall

You can specify an optional compressed uninstallation system to uninstall your software from the target system. Press the ellipsis (...) button to select the UNINSTAL.EX\_ file with the standard Open File Dialog.

### Cusis

Specify a default path name Infrobot uses to store Customer Information. Press the ellipsis (...) button to choose the path with the standard Infrobot Directory Room Dialog.

# Infrobot Preferences (System)



## Internals

Displays internal information about the Infrobot system.

## No System Tip

This disables or enables tooltip display.

## No Developer Name to INF File

This disables or enables the original copyright holder message of the INF File (in a future release you can add your own messages).

## Enable non-executables to PM

If checked, you can drag and drop non-executables from the File Archive Browse to the PM Browse. All uncompressed extensions are allowed but but HLP, EXE, COM, BAT, DOC, TXT, WRI compressed extensions only.

## Start-Up Pick List

If checked, the Pick List will be displayed after you have started Infrobot.

## Use Uninstall in New Projects

If checked and a new installation project will be created, the "Use Uninstallation System" check box in the General Settings Main Tab will be checked automatically.

## Infrobot Preferences (File Standard)

General	Tool Location	System	File Standard	Variables
Executable File	Executable File			
Graphic File	Graphic File			
Document File	Document File			
System File	System File			
Unknown File	Unknown Filetype			
Compressed Files	[compressed]			

The File Standard Tab enables you to customize the Standard File Descriptions that are used during the drag and drop process from the Data Room File Pool to the File Archive.

## Infrobot Preferences (Variables)

General	Tool Location	System	File Standard	Variables
Pre-Defined Copyright	<input type="text" value="© Copyright 1995-1996 Linder Software Systems"/>			
Pre-Defined Backup Dir	<input type="text" value="BACKUP"/>			

### Pre-Defined Copyright

If a new project has been created, the Copyright entry in the General Settings Main Tab will be automatically set to the Pre-Defined Copyright.

### Pre-Defined Backup-Directory

If a new project has been created, the Backup-Dir entry in the General Settings Build Tab will be automatically set to the Pre-Defined Backup.



## **Built Master Disk(s)**

If the Bug Checker's Final Check Result status is **READY TO SHIP** you can build the disk set. Infrobot will prompt for the disks as they are required.

## Product Master Data

The Product Information allows you to manage basic Information about your Software Products shipping out with Linder SETapp. Doing this, select **Distribution|Product**. The Product Information browse allows you to add, change or delete a Software Product.

You can DOUBLE CLICK to a record to change or a RIGHT CLICK calls a popup menu to insert, change, or delete records. A third method to edit a record is to use the Browse Update Buttons (Insert, Change, and Delete).

The Change and Delete buttons correspond to the currently highlighted record.

The Insert button adds a new software product.

[How to insert a Project to the Pick List?](#)

# Customer Master Data

The Customer Information allows you to manage basic Information about your Customer or to define Software Projects shipping out with Linder SETapp. Doing this, select **Distribution|Customer**. The Customer Information browse allows you to add, change or delete a Customer or a Software Project.

**Note:**

The Pick dialog lists all the projects defined in this browse.

You can DOUBLE CLICK to a record to change or a RIGHT CLICK calls a popup menu to insert, change, or delete records. A third method to edit a record is to use the Browse Update Buttons (Insert, Change, and Delete).

The Change and Delete buttons correspond to the currently highlighted record.

The Insert button adds a new customer or project.

◆ To associate a Software Product with a Customer or Project please choose the Licence Tab.

You can DOUBLE CLICK to a record to change or a RIGHT CLICK calls a popup menu to insert, change, or delete records. A third method to edit a record is to use the Browse Update Buttons (Insert, Change, and Delete).

The Change and Delete buttons correspond to the currently highlighted record.

The Insert button adds a new Licence Agreement.

[How to insert a Project to the Pick List?](#)

# Pre-Loader

SETUP.EXE is a pre-loader for the installer SETAPP.EXE.



The pre-loader display the "Initializing SETapp..." message during decompressing and loading the installer.

## **Installer SETAPP.EX\_**

The Installer SETAPP.EX\_ will copy files from floppy disks (or a directory on a hard disk, a cd-rom disk or a network drive) to the destination(s) directory(es), and do everything else that a Windows Installer is supported to do. If the files are compressed with Microsoft's COMPRESS.EXE they will be decompressed automatically.

## **CUSIS conversion tool**

To convert CUSIS files (CUSIS.LIN) prior Release 1900 to the new format please run the external conversion tool CONVERT.EXE. The Database must have the same location like the conversion tool.

To reset the Directory-ID highlight the specific file and press the RESET-DIR button. The file will be related (if possible) to the Installation Directory (Base Dir).

# How to insert a Project to the Pick List

## 1. Create a New Project (File|New)

## 2. Insert a Product Master Data

- Press the INSERT button

- Example:

### General Tab

Product Code : 96-10-1900

Product : SETapp 1.90 Release 1900

Category : Installation System

Disks : 1

### Version Tab

Version Date : 04.11.96

Version : 1.90

Release : 1900

## 3. Insert a Customer Master Data

- Press the INSERT button

- Example:

### General Tab

ID-Code : 2 (auto increment)

Project : Registered SETapp Version (Disk)

### License Tab

- Press the INSERT button

- Press the ellipsis (...) button to choose the product code (defined in Step 2).

- Press the ellipsis (...) button to choose the Archive Path of the Project File \*.TPS (defined in step 1).



**How to distribute the installation?**





