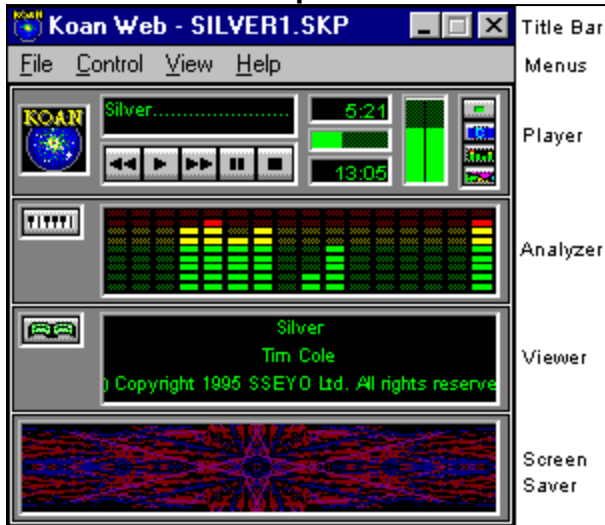


Koan Web V1.0 Help Contents



Click anywhere in the picture to get help

Quick Start

[Introducing Koan Web](#)

Menu Commands

[File menu](#) [Control menu](#) [View menu](#) [Help menu](#)

Further information

[PC Configuration](#)
[Setting up your MIDI MAPPER](#)
[Setup Options](#)
[Common Questions](#)
[Copyright issues](#)
[SSEYO](#)



[SSEYO Koan Pro](#)



[SSEYO Koan Albums/Koan Plus](#)

Copyright © 1994 - 96 SSEYO Ltd. All rights reserved.

Credits:

This SSEYO Koan software was developed by: Tim Cole, Peter Cole and John Wilkinson with special thanks to Tim Didymus, Jon Pettigrew and Joel Cutrara. Thanks also to our customers for their continuous enthusiasm and encouragement.

File Menu commands

Open

Connect to the SSEYO Web Page ...

File 1, 2, ...

Exit

Control Menu commands

Master Control Settings

Play

Stop

Fast Forward

Rewind

View Menu commands

Setup

Maximize Screenshot

Show Analyzer

Show Viewer

Show Screenshot

Piece Notes

Set Window background

No Title

Help Menu commands

[Index](#)

[Search](#)

[Using Help](#)

[About](#)

Open command (File menu)

Use this command to select a MIDI file or Koan SKP/SKD piece for playback

Shortcuts

Keys: CTRL+O

File Open dialog box

The following options allow you to specify which piece to play:

File Name

Type or select the piece you want to play

List Files of Type

Files can be selected with the extension SKP, SKD or MID.

Drives

Select the drive in which the file you want to play is stored.

Directories

Select the directory in which the file you want to play is stored.

Network...

Choose this button to connect to a network location, assigning it a new drive letter.

Connect to the SSEYO Web page (File menu)

Selecting this menu item will load the Web Browser you have defined in the View Setup dialog. It tries to run this program and then gets it to load up our URL (Uniform Resource Locator), or any other URL that is available off the menu and that you have selected. If your browser is set up to autodial then you can connect direct to our page this way (provided you are not connected when you select this menu option). Otherwise, you need to be connected to your services provider (with your browser closed*) before you launch the browser from our menu.

* If you have the Koan Web/Plug-in 32 bit version and a 32 bit browser, you should be able to call up the new page without closing your browser (another instance of the browser will be loaded).

Note:

You must already have a Web browser setup and functioning correctly (see your Web browser information, e.g. Microsoft Internet Explorer, Netscape Navigator, Mosaic etc.), for which you will need at least a Dialup account to the Internet with an Internet service provider. There are many sources of information on the Internet including magazines, friends and books. If you are new to the Internet or the WWW now is the time to learn about it and get connected!

1, 2, 3, 4 command (File menu)

Use the numbers and filenames listed at the bottom of the File menu to open the last four pieces you closed. Choose the number that corresponds to piece you want to play.

Exit command (File menu)/ Close Command (Application Control menu)

Use this command to end your Koan Web session. You can also use the Close command on the application Control menu.

Shortcuts

Mouse: Double-click the application's Control menu button.




Keys: ALT+F4

Play command (Control menu)

Use this command to play the currently selected piece. When a piece reaches its end it will automatically start playing again, as if in a continuous loop.


Shortcuts

Player module: 
Keys: CTRL+P

Stop command (Control menu)

Use this command to stop the piece currently playing.


Shortcuts

Player module: 
Keys: CTRL+T

Pause command (Control menu)

Use this command to pause the piece currently playing. The piece will resume playing when you release the pause button.

Shortcuts


Player module: 
Keys: CTRL+U

Fast Forward command (Control menu)

Use this command to move quickly forward through the playing piece. The piece will increment forward by 10% each time this command is used.

Note: Koan pieces (as opposed to MIDI files) do not actually rewind as they do not operate in this way. What happens is that the piece characteristics will be adjusted to new values appropriate for the new elapsed piece time.

Shortcuts


Player module: 
Keys: CTRL+F

Rewind command (Control menu)

Use this command to move quickly backwards through the playing piece. The piece will rewind by 10% each time this command is used.

Note: Koan pieces (as opposed to MIDI files) do not actually rewind as they do not operate in this way. What happens is that the piece characteristics will be adjusted to new values appropriate for the new elapsed piece time.

Shortcuts

Player module: 
Keys: CTRL+B

Maximize Screenshow

Use this command to set the Screenshow to display at full screen. When displayed at full screen size it will sit on top - other applications will not be able to display on top of it. Not all the screen savers are used in full screen mode. When maximized, click on the Screenshow background to dismiss it, or press any key whilst it has the focus.

Shortcuts

Keys: F4 to maximize the Screenshow

Set Window Background

Use this command to set the bitmap that you use as a background to the modules. If you do not choose a background then the module background will default to gray. This is another great way of customizing your desktop; the modules look really neat when you have your own background bitmap in place, e.g. marble, sand, clouds, stars. You can use any size bitmap, but small bitmaps work quite well (e.g. 50 pixels square). Get creative!

Shortcuts

Keys: F12 calls up the Windows Background

No Title command (Window menu)

Use this command to hide the Koan Web Title bar and menus. Press the Escape key to bring them back or toggle them on/off.

Shortcuts

Mouse: Double-click on any of the Koan Web modules
Keys: ESC

Show Analyzer/ Viewer/ Screenshow (Window menu)

Used to show (or hide) any of the Koan Web modules (with the exception of the Player module, see below). The display buttons are located on the Player module (and they double up as display/ hide buttons). When you hide a module Koan Web remembers this when you next run the program.

When a module is hidden its corresponding display button will be in the up position, ready to be depressed. When a module is open its corresponding display button will be shown as depressed.

Note: The display button has special significance on the Player Module as it closes down the Koan Web application. It is in effect a master power button.

Shortcuts

Keys: F5 - Viewer module
 F6 - Analyzer module
 F7 - Screenshow module
 ALT+F4 - Player module

Index command (Help menu)

Use this command to display the opening screen of Help. From the opening screen, you can jump to step-by-step instructions for using Koan Web and various types of reference information.

Once you open Help, you can click the Contents button whenever you want to return to the opening screen.

Search command (Help menu)

Use this command to search for topics on which you require help.

Using Help command (Help menu)

3 types of help are available:

- 1 Press F1 to bring up the Help Contents screen at any time
- 2 Press Shift F1 to bring up the context sensitive help arrow which you can click on an item or menu on which you want help.
- 3 Use the Help menu to call up the Search Dialog or the Help Contents screen.

About command (Help menu)

Displays the copyright notice, issue number and version number of your copy of Koan Web.

Context Help command

Press the Shift+F1 keys to call up the Context Help command and obtain help on some portion of Koan Web. The mouse pointer will change to an arrow and question mark. Then click somewhere in the Koan Web window, such as a button. The Help topic will be shown for the item you clicked.

Shortcut

Keys: Shift+F1

Minimize command (Application Control menu)

Use this command to reduce the Koan Web window to an icon or to your Taskbar or to .

Shortcut

Mouse: Click the minimize icon on the title bar.

Keys: ALT + Spacebar + N

Maximize command (Application Control menu)

Use this command to maximize the Koan Web window.

Shortcut

Mouse: Click the maximize icon on the title bar.
Keys: ALT + Spacebar + X

Close command (Application Control menu)

Use this command to close Koan Web.

Double-clicking a Control-menu box is the same as choosing the Close command.



Shortcuts

Keys: ALT+F4 closes Koan Web

Switch to command (Application Control menu/ Taskbar)

In Windows 3.1 use this command to display a list of all open applications. Use this "Task List" to switch to or close an application on the list.

In Windows 95 this opens up your task bar.

Shortcut

Keys: CTRL+ESC

Title Bar

The title bar is located along the top of a window. It contains the name of the application and open piece. To move the window, drag the title bar. Note: You can also move dialog boxes by dragging their title bars.

Setup Dialog command (View menu)

You may not need to change any of the other settings shown below, but you should be aware they are available - **SSEYO Koan Web Auto Play, Use Koan ADSR, Composer, Conductor, MIDI Output Device, Koan File Supplementary Search Path, Define Web Browser and Multithread (32 bit version only)**.

SSEYO Koan Web Auto Play

Checking this box will mean every time you open a piece it will start playing automatically. (See also [Running SSEYO Koan Web Minimised](#)).

Conductor Timer

Roughly speaking, the Conductor determines what how demanding the SKME is for your PC system resources. The bigger the value of Resolution and Cycle, the smoother the truly Ambient pieces sound as there is less precision required in the composition, however, it is generally best to use smaller values, which are required for the more rhythmic pieces. The default setting is High Priority.

Low Priority

Means the SKME is less likely to take system resources; so some pieces will sound smoother as there is less rigorous control of timings. However, this can have a detrimental effect on highly rhythmic pieces.

High Priority

If on **High Priority** at high **Resolution** (i.e. low actual millisecond (ms) value) the SKME will take as much system resources as it needs - highly rhythmic pieces require this. This can cause other applications to run more slowly.

Resolution

In conjunction with the **Cycle** parameter below, determines how accurately the SKME conducts its pieces/sends out its MIDI information. **Resolution** is the tolerance on the Cycle value. This means Koan will send out MIDI information every **Cycle +/- the Resolution**. The default setting is 10ms.

Cycle

This is the period in milliseconds between timer events, i.e. how often the SKME composes/sends out the MIDI information. Small values for **Cycle** (10 ms or less) mean the pieces will be very accurate time wise (important for rhythmic pieces), however this can sometimes be at the expense of some smoothness, especially on slower machines. Very small values of **Cycle** and **Resolution** can cause your PC to slow down its processing of other applications. The default setting is 10ms.

Composer

The Composer sets the time for which the SKME looks ahead, and the elapsed period over which it will carry harmony and other relationships.

Reaction Time

The amount of time in milliseconds (ms) the Composer has over which to compose. The larger the value the more the SKME can compose ahead, which is very useful for slower machines, and if you want to do a lot of processor-intensive work, i.e. displaying a screenshow. If you choose a small value for Reaction Time and totally remove the focus away from the program, i.e. hold down the mouse, the output can stop. It will resume when the focus passes back to SSEYO Koan Web.

Normally set to 5,000 ms (i.e. 5 seconds).

History Time

The period over which harmony relationships will hold good for long notes. Normally set to 20,000 ms

(i.e. 20 seconds).

Multithread

The 32 bit version of Koan Plus (designed for use with Windows 95 or later) supports a multi-threaded composer, which can be enabled through the Setup Dialog. This option enables Koan to keep on composing, even when the graphical user interface is fully engaged by the user. Previously, if the user interface were stopped while waiting for user input, the music could stop being played after the Composer Reaction time (View Setup) had elapsed. If you enable the multi-threading option, and later experience problems with multi-threaded operation, you may of course disable (and later re-enable) this option.

The most likely problem with multi-threading is that you might experience some lack of smoothness in the played music when you have a small amount of physical memory available (e.g. less than 16 Megabytes of base physical memory, and / or many applications loaded). If this is the case, simply disable the multi-threading option.

MIDI Output Device

Select where you want the SKME to send its MIDI output. Normally this will need to be set to the MIDI Mapper if you are using Windows with a soundcard, or alternatively, you can write directly to your soundcards driver. However, if you wish to drive an external synth then set this up to your MIDI Output device, e.g. SB16 MIDI out.

Use Koan ADSR

If your MIDI Output device solely uses the OPL3 chipset (e.g. SB16 and SB16 equivalents) or is one that [doesn't support](#) continuous volume controller changes then you should clear the Use Koan ADSR checkbox. If you have a Wavetable soundcard or one that [does support](#) continuous volume controller changes (e.g. AWE32, SCC1, DB50XG, Gravis, NuSound) then you should check the box. The first time you run Koan Web a dialog will display asking you to choose which of the above you have - this will update the Setup Options automatically.

Koan File Supplementary Search Path

Enter the path(s) here where you want SSEYO Koan Web to look for any supplementary files used by your pieces. These could be for example SoundFonts from a CD ROM drive, Gravis patches off a network drive or WAV files from another directory to that used by your piece. The format is that of your normal DOS PATH command. Separate your paths with semicolons and leave no spaces between entries. Adding a \ after your directory is optional and not required.

Example:

C:\WAV;D:\SBK;E:\KOAN\PIECES;C:\KOANPRO\TEMPLATE

Define Web Browser (button)

If you have an Internet account with a Internet Service Provider and have a web browser setup on your system (e.g. Microsoft Internet Explorer, Netscape Navigator or Mosaic) then you can automatically dial our [website](#) for the latest news, files and links. Press this button to call up the Select your browser application dialog, which is like a normal file open dialog. Find your browser and press OK to have it selected. Once you have done this you can select File, [Connect to the SSEYO Web Page](#) from the menu to automatically connect to our website (provided your browser is set up to autodial). This will launch your browser (it should not be loaded already) and set it to connect to our website URL - <http://www.sseyo.com>

Note 1: Changes to the Composer or Conductor values are implemented by the SKME as soon as it can accommodate them. You do not need to restart the piece for these changes to take effect.

Note 2: The values set here will be used by the SKME to play any piece you might load, so in some circumstances it may be necessary to alter them. You will be able to identify this if the piece

sounds jumpy or seems to give you bursts of notes. In this case try to increase the reaction time first and then raise or lower the values for cycle/resolution. However, once set to your satisfaction they should not require frequent adjustment.

Running Koan Web Minimised

You may want to set up Koan Web so that it loads your piece, starts it playing and then minimises to an icon. This means you never actually see Koan Web full screen (unless you maximise the application). You may wish to do this if all you want to do is listen to your piece with the minimum of effort. You could even then put the Koan Web icon in your Startup program group so that everytime you turn on your machine Koan Web kicks off playing behind the screens.

To setup Koan Web to run minimised do the following:

- 1 Select Setup Options and check the Autoplay box
- 2 From the Program Manager select the Koan Web icon and choose File Properties.
- 3 Make sure the Run Minimised box is checked and press OK.

See also

[Setup Options Command](#)
[Always on Top](#)

Always on Top (Application Control menu)

This feature allows you to force Koan Web to always display on the screen, no matter what other applications you are running. The option can be selected to toggle it on and off.

See also

[Running Koan Web Minimised](#)

Master Controls (Control menu)

These controls override, but do not alter any *piece* level settings that may be provided within the piece. They are additive in that they add a uniform amount to the value of this parameter for each instrument in the piece. Simply click on any slider with the mouse and drag the control setting to a new value, then release the mouse for the setting to take effect, or type in the numerical value.

Volume Sets the master volume (actual value shown on Player volume indicator).
Pan Sets the master stereo/ pan position of the output.

Reverb Sets master reverb level.
Chorus Sets master chorus level.

Note 1: The Volume control has no effect if your MIDI Output device solely uses the OPL3 chipset (e.g. SB16 and SB16 equivalents) or is one that **doesn't support** continuous volume controller changes - in which case use the soundcards own Mixer application or the Windows 95 Mixer application. If you have a Wavetable soundcard or one that **does support** continuous volume controller changes (e.g. AWE32, SCC1, DB50XG, Gravis, NuSound) then this works fine. See [Setup Options](#).

Note 2: Reverb and chorus settings will only have any effect on soundcards/ synths that support them.


Piece Notes command (View menu)

Pressing the Piece Notes button calls up the Piece notes window where you view notes provided about the piece. These notes are provided by the author and are not editable, however, you may copy the text to another file.

Note: Remember that the copyright on the Piece notes and the piece belongs to the Copyright holder detailed in the Piece.

Shortcut

Keys: F11

Viewer module: 

Player module

The Koan Web Player module is the major module in the application. It allows you to play Koan pieces and MIDI files and has controls similar to a CD player. It also provides buttons to launch the other modules that are part of Koan Web. To close the Main Control module either press the power button or select File Exit from the menu.

The Koan icon on the Player Module will sparkle when a piece is playing.

The trailing display shows the piece name. This scrolls across the screen and can be turned on and off by clicking on it.

When a module is open the appropriate module button will be grayed; conversely when the module is closed the button will be up and ready to be pressed.

The maximum combined volume of all the playing instruments is set with the Volume control.

A moving piece played marker give a visual indication of the pieces progress. How long the piece has been playing is displayed above it, and below is given the total piece length.

Tip: To see the menus double click with the mouse on any of the modules.

Analyzer module

The Koan Web Analyzer module is designed to allow you to see more deeply into what is happening with the music, and provide a pleasant moving indicator coupled to the piece output.

Toggles between one of 2 types of display: MIDI Channel / Frequency Spectrum



MIDI Channel display:

16 LED bars are shown, one for each MIDI channel. Each bar shows the relative volume of each note played on that channel and gives a good visual indication of the activity going on on that channel.



Frequency Spectrum Display:

16 LED bars are shown, spanning the range of around 10 octaves. Middle C is roughly in the middle- each bar represents roughly 8 semitones. The bars show the relative volume of each note played within their related keyboard range and give a good visual indication of the frequency balance of the piece.

Note: It is possible that some notes played by your sound source may continue to play whilst the display shows them to have faded away. Each meter responds to note on information in the MIDI stream and it assumes that all notes played have a natural decay curve. This will be correct for most types of instrument but it is possible that some instruments in the piece may play very long notes which hold their volume. In this instance you would see the note fade away but still hear it. For instance, an artist might decree that one of the instruments in the piece plays a pad - a soft sound which on a normal synthesiser will play for as long as a key is depressed - for a period of 20 seconds. Even though you will see the note displayed in the LED bars for a short while it will continue to play on for around 20 seconds.

Viewer module

The Koan Web Viewer module includes a main window in which the relevant abbreviated piece information is displayed, namely the name of the piece, the author and copyright information

Screenshow

The Koan Web Screenshow module will change as the music plays; and is in effect driven by the music. It can be viewed in the module or expanded to fill the entire screen. This is achieved by double clicking on the Screenshow module. There are 4 Screenshows, which are chosen at random. The Lava Screenshow (shimmering pattern) will run only where your current display mode supports the Palette Management functionality of Windows, and is never used in full-screen mode.

Piece

'Piece', 'track', 'song' and 'soundscape' are all terms used to describe the music created by Koan when it 'plays' the special file that is generated by SSEYO Koan Pro (the big brother of Koan Web) When the file is plugged into the SSEYO Koan Music Engine (SKME - what we refer to as the software technology behind the Koan range of products) it generates the beautiful music that ensues. The piece can either have the extension .SKP (encrypted) or .SKD (Koan Pro Design file). Koan Web can also play MIDI files.

Encryption

Pieces created by SSEYO Koan Pro can be encrypted so that others can not read them, offering a higher level of protection to those who spend time creating polished works. Encrypted files have the file extension .SKP. These can be played by Koan Web as well as the non-encrypted .SKD files.

Parameters

Parameters are the various types of variables the SKME uses to control its output.

Envelopes

Envelopes are a graphical way of displaying the way a parameter changes over time; they are analogous to a 'bar chart' in that the height of the bar is in direct proportion to the value of the parameter: the higher the bar the greater the value. These can only be seen in SSEYO Koan Pro.

Instrument

This is written into a piece by SSEYO Koan Pro and can be any of the General MIDI patch numbers (including capital series i.e. 125.6) and these are identified by their patch number i.e. 098 FX2. We support all drum sets, and these sounds are identified as the patch number preceded by a D, i.e. D60.

Voice

A voice in Koan terminology is a 'player', and each player is assigned an instrument. You can have up to 50 voices defined in a piece. Your sound card/synth provides the only real limitation on how many of these can play at once.

General MIDI

General MIDI is a standard adopted by many manufacturers where there are 128 patches which have pre-defined numbers. This allows MIDI files to sound roughly the same when they are played back, no matter what General MIDI soundcard/ synth is used to play them on. For instance, patch no 19 will always be a Rock Organ sound (or nearest equivalent) no matter what the card. However, not all soundcards are equal and in general a piece can sound quite different on another soundcard, due to the very wide range in quality and similarities available.

Note: Some cards do not actually provide the full complement of 128 sounds, in which case the manufacturer will generally provide a MIDI Mapper patch map which diverts those patch numbers to their nearest equivalent.

Module

Koan Web uses a number of stackable modules, rather like a Hi Fi system. Each module provides extra ways of viewing or hearing SSEYO Koan music and each one can be hidden or made visible as required. There are 4 modules in Koan Web; the Player module; Viewer module; Analyzer module. and Screenshow module

The maximum combined volume of all the playing instruments is set with this Volume control. This volume control is the same as that in the Master Controls.

Shows how long the piece has been playing

Total piece length

The moving piece marker give a visual indication of how far you are through the pieces. Click on it to move through the piece.

The trailing display shows the piece name. This scrolls across the screen and can be turned on and off by clicking on it.

SSEYO

"SSEYO - Creating a whole new musical experience "

Introduction to Koan and SSEYO by Tim Cole, co-founder of SSEYO

"The idea for Koan Music came to me back in 1986, whilst reading Isaac Asimov's Foundation Series. It occurred to me that it might be possible to create a computer music system which could affect you on an emotional level, in a soothing fashion or by enhancing or filtering your perceptions, and provide ever-changing, eventually interactive, music. A key premise was that much of the musical 'processing' would be carried out by the listener, who would bring to it their own perceptions, situation and 'wetware', so internalising and personalising the experience.

After considering how it might be possible to achieve the impossible, a small core of key people (the founding partners - including Pete Cole, the SKMEs architect and Jon Pettigrew, commercial director) came together and SSEYO was born in 1990, when development of the SSEYO Koan Music Engine (SKME) commenced in earnest. It has been through a great number iterations since then, and the first commercially available Koan product, Koan Plus V1.0, was launched in November 1994.

Koan Music can be thought of as being comparable to a ball bearing traveling down a guide or chute. Each time the ball bearing makes the journey it will travel a different path, but the available paths are constrained by the chute. In a similar way Koan Music is governed by an envelope of possibilities, these being set by the piece author with Koan Pro. Each time a Koan piece plays it will have certain boundaries set by the author, outside which the music will not go. All this means that the music can be different each time.

After much deliberation in early 1994 the term 'Koan' was finally chosen for the music. Koan is a Zen word meaning a mystery or puzzle with no logical solution. We felt that it was a good choice as the music is a 'now' phenomenon (much of Zen philosophy is about the present, as opposed to the future or past). In addition, there is a subtle intangibility to it through the use of random, changing events. As it is created in real-time there is no real 'solution' to the music generated.

In early 1995 we approached Brian Eno to see if he would like to experiment with our system and use it to create some of his own Koan pieces. To our delight he appreciated the music and the possibilities it afforded so he started work on a number of Koan pieces with Koan Pro, the Koan authoring system. In April 1996 SSEYO published 12 of his Koan pieces in a release titled Generative Music 1.

Because Koan music is generated by computer, there are tremendous opportunities for other programs to affect it in real time, to change the musical 'envelope' of possibilities as it plays. This opens up real possibilities for music that is interactive and where the listener is truly empowered to consider choices that affect their musical experience. It may take some time for the wider audience to understand and embrace the potential Koan technology can deliver, but I feel there is now a new opportunity for pioneering artists and multimedia developers to use music in new ways. The WWW will provide the main platform for a new, real-time musical experience."

SSEYO (pronounced SAY-OH) was established to respond to the ever increasing demand for quality of life and personal fulfillment. If you want to know more about the company or its products, have any ideas as to what you would like us to develop next, suggestions as to how we may improve our products or even feel you would like to be part of our company, please do contact us at the address below:

**SSEYO Ltd
Pyramid House
Easthampstead Road
Bracknell
Berks RG12 1YW
UK**

Sales and general information:

Internet: koaninfo@sseyo.com

WWW: <http://www.sseyo.com>

CompuServe: GO SSEYO

Tel: +44 (0) 1344 712017
(9:00am to 4:00pm GMT Monday to Friday, excluding holidays)

Fax: +44 (0) 1344 712005

Trademarks

SSEYO, Koan and the SSEYO logo are registered trademarks of SSEYO Ltd in the UK and are trademarks of SSEYO Ltd in other countries. Other products mentioned may be trademarks or registered trademarks of their respective companies and are the sole property of their respective manufacturers.

SSEYO Koan Web requirements

Recommended (or greater):

- 486 DX 66MHz PC (or greater)
- 8Mb RAM (minimum)
- DOS 5.0 or higher
- Windows 3.1 or Windows 95
- Mouse
- 3.5" 1.44Mb floppy drive for installation
- 3Mb free hard disk space
- PC soundcard/ MIDI interface with MIDI Mapper support and with a high quality sound synthesiser - Wavetable or LA (Creative Labs SoundFont or Gravis patch compatible preferred)

There are no special display requirements. You may use any sound card or MIDI interface and external synth that can connect to the [Windows MIDI mapper](#) (refer to your Windows manual for details on the MIDI Mapper). This noted, SSEYO Koan Web will sound the best if you are using a high end sound card or external synth/sampler; this is because the quality of the music produced is generally only limited by the sound quality of your sound card/ synthesizer.

Note: Windows 3.1: We recommend you use the MIDI Mapper, but the SKME will pick up any other Windows MIDI driver if the MIDI Mapper is not installed.

Note: SSEYO Koan Web supports the [General MIDI standard](#), and all instructions assume your sound card or synth does, too.

Trademarks

SSEYO, Koan and the SSEYO logo are registered trademarks of SSEYO Ltd in the UK and are trademarks of SSEYO Ltd in other countries. Other products mentioned may be trademarks or registered trademarks of their respective companies and are the sole property of their respective manufacturers.

World Wide Web

An inter-connected series of electronic pathways, allowing you to access information on computers all over the world, mostly via the POTS system (Plain Old Telephone System). You need a modem and an Email account with one of the network service providers. SSEYO Koan pieces can be downloaded over the WWW and played by SSEYO Koan Web, configured as a Helper Application, or directly with the SSEYO Koan Plug-in for Netscape Navigator 2 - **while you are online**.

With a 28800 modem you can typically download a 7Kb Koan piece (an average file size) in 3 seconds - SSEYO Koan Web/Koan Plug-in will then start playing it immediately. One of the main advantages of SSEYO Koan technology for net use is that the piece you download would only be a few Kb in size yet it could play beautiful music for many hours. Koan file sizes typically range from less than 1Kb to 20Kb.

Dont forget that any files you place on your website are covered by copyright (the right to copy - see Copyright discussion) and likewise any files you download, too!! If you want to put someone elses Koan files on your website you need their permission (as you will have copied them). However, we have produced a number of files (the Koan Giftbox) that we will allow you to put on your own website for FREE, meaning you can have music on the net for FREE.

Check out our web site for the latest demos, files and links (also see the Connect to the SSEYO Web Page menu option):

WWW: <http://www.sseyo.com>

CompuServe® forum

Purchasing SSEYO Koan Pro or SSEYO Koan Albums will enable you to get a FREE Membership to CompuServe, some details are given below:

Get valuable SSEYO support around the clock on CompuServe

CompuServe gives you a direct connection to our technical support team and easy access to the most current updates. To access the SSEYO Section of the Multimedia A Vendor Forum, click on the **GO** button of the CompuServe Information Manager software (see Membership below) and enter **SSEYO**. There you will gain valuable information on all our products, as well as late-breaking news on soon-to-be and newly released products.

- **Stay in touch 24hrs a day.**
Post your messages for us and share your views and knowledge with others. Catch the latest Press Releases and information on our products
- **Get product demos and download files.**
We will always have the latest versions of demos of our products here in the Library. You will also find many demo pieces and we encourage you to make your own submissions - who knows, you might even get famous in our Forum section!
- **Talk to support experts.**
There is no better place to get support on our products!
- **Provide product feedback.**
Tell us what you want to see in our products. What do you like most about them? What could be better? What other services could we offer you? We always want to know!

Get a FREE Membership to CompuServe...

As a valued SSEYO customer, you would be entitled to a **FREE** CompuServe Membership, including:

- One free month of Membership (a \$9.95 value)
- An additional 5 hours free in your first month
- CompuServe Information Manager (CIM) software (for Windows or Mac)
- A complementary subscription to CompuServe's monthly magazine
- A personal User ID number and private electronic mailbox
- Access to popular internet services.

GO SSEYO. We look forward to meeting you.

Introducing SSEYO® Koan® Web

Welcome to SSEYO Koan Web - real Web Music has now arrived.....

To date the only type of music you have been able to listen to on the Web has been pre-recorded and pre-canned (unless you have been playing along with or listening to a live MIDI jam session). Irrespective of whether the music comes as audio or MIDI files, they are always recorded (or recorded and compressed) BEFORE you get to hear them. Surely your experience on the web leads you not to expect just more of the same, but to expect something revolutionary and different?

Enter Koan Music, ever-changing real-time generated music. Every time you hear it, it can be different. The feel of a Koan piece is dependent on how it has been designed by the author, and this can range from a 4 on the floor drumnbass groove, through to a chillout ambient style. Even classical sounding music is possible! Because of its novel design it can ebb and flow in many beautiful ways.

Koan Music also travels in very small files, typically around 7Kb, but some can be even less than 1Kb - and play for up to 8 hours!! This makes it ideal to have on your website for people to download and listen to while they browse your site, or while they are downloading large files. Imagine real ever-changing music on your site to help keep your readers coming back.... Well, all they need is a copy of the freely available Koan Web/Koan Plug-in for Netscape Navigator 2 and a MIDI soundcard. All you need is some Koan files on your webpage (and we provide some free ones for you, too - see our website for details).....

Koan Web is a 'player' application that plays standard MIDI files, as well as Koan Music. You can use SSEYO Koan Web to play Koan music over the World Wide Web (WWW) or as a standalone Koan Music player on your PC. It loads and plays single Koan/MIDI files and comes with a number of Koan pieces that you can put up on your own site, meaning you can now have music on your site for FREE!!!

SSEYO Koan Web plays the encrypted SSEYO Koan Play files (SKP) generated by SSEYO Koan Pro. New Koan pieces can be created in the SSEYO Koan Pro authoring system. Why not give it a try?

Computer music - how it was made in the past

The most commonly used method to create 'generated' or auto-composition music was developed by Mozart. He created a system of automatic composition which used a fairly large set of generally short musical phrases of a fixed length. He would roll dice to determine in which order he should string them together. The result was generally quite reasonable, but fairly limited in expression.

The new Koan approach

The unique SSEYO Koan Pro uses nearly 150 specially designed variable controls to influence and produce its music as it goes. The values of these controls, some of which are time sensitive, are written into a SSEYO Koan 'piece' created with SSEYO Koan Pro. They determine the notes and melodies generated when you play the 'piece' through the SSEYO Koan Music Engine (SKME). It is these very controls that allow the creation of music that is smooth, non-intrusive and natural sounding. The SKME's real power is that it composes and harmonizes everything in real time according to your selections. And because Koan Pro still lets you use the 'roll the dice' technique (i.e. for selecting music patterns), you can create pieces spanning the complete range from simple old style 'roll the dice' constructions to completely free-wheeling, ever changing atmospheric productions.

What music do people want to hear on YOUR website?

With SSEYO Koan Pro you can create ever-changing highly rhythmic leading edge Techno pieces or beautiful soothing Ambient music, it's up to you. And, if you take advantage of its built in support for Creative Lab's AWE32 SoundFonts, Gravis Patches and WAV files you can create stunningly atmospheric and contemporary 'radio ready' material. Become a real pioneer in what is a new WWW music and new genre of our time.

`Zentertainment' ... great. What is it?

The music you hear with SSEYO Koan Web is ideally matched to the new forms of software - or 'Zen Ware', - now appearing on the market. We like to use the term Zentertainment™ for the music created by SSEYO Koan Pro, because as well as creating relaxing and reflective musical material it can also be used to produce exciting techno music. Because the music is always different it requires an intuitive response from you, helping you to 'surf' with more freedom and instant appreciation.

'Koan' itself is a Japanese Zen word which means a puzzle or mystery with no logical solution. There is a famous Koan: if you clap two hands together you get the sound of two hands clapping. What is the sound of one hand clapping? Our music is well suited to this description, as it never repeats itself (unless specifically requested to do so) and so it is never wholly quantifiable: it is like an endless stream.

Where you might hear it....

We also have an Application Programming Interface (API) available for the SKME for developers who wish to include it in their own applications. You might therefore hear it included in software games or multimedia titles.

Remember, SSEYO Koan music is not muzak, which is a rendition of a song people already know and love: SSEYO Koan music is always fresh and different. Perhaps the closest analogy to the SSEYO Koan products is that of an Aeolian harp, where the wind 'plucks' its strings in an uncertain and changing manner, thus producing quite 'ethereal' music. Or think of it the aural equivalent of a glowing, burning log fire. SSEYO Koan music can be ethereal or more down to earth.

SSEYO Koan Web is easy and fun to use

The real beauty of SSEYO Koan Web is that it is so fun to play with. Not only fun to use, but easy to use too. The standard Windows user interface that you see whenever you use a Windows type program means that you don't have to guess where to find everything, as you would in a old DOS type program.

We have provided special LED displays to show you how the music is changing as it plays; these show you the general frequency spread of the notes being played together with the MIDI channel output, for those more technically inclined. They can be quite mesmerizing to look at. We also include a few simple screenshows that react to the music played.

SSEYO Koan Web and General MIDI

As SSEYO Koan Web supports General MIDI your piece will have access to many special effects and ways of manipulating sounds if your sound card supports General MIDI too.

Copyright, licensing and ownership discussion

Important: *SSEYO provides no warranties whatsoever as to the accuracy or legality of the statements provided below. We recommend you should consult your lawyer should you have any questions about Copyright. See also the software licence accompanying this product.*

Copyright

Computer generated music is currently a hot topic in Copyright circles and there are no real precedents set either way. The wording of the UK Copyright, Designs and Patents Act 1988 states that the owner of a copyright in a musical work is the person that created it, whereas this contrasts with computer generated musical works where the owner of the copyright in the work is the person by whom the arrangements necessary for the creation of the work are undertaken. We have designed SSEYO Koan Pro so that we allow the author of a SSEYO Koan file/ piece - i.e. the .SKD, .SKT, .SKP or any other file it might be possible for it to generate in the future - to state explicitly what rights they are prepared to relinquish.

The originator of a SSEYO Koan file/piece is the owner of the copyright on that piece. Just as a Record Company can sell you a record or CD on which their artist's song is recorded, the originator of a SSEYO Koan file can provide a floppy disk/CD ROM containing their own file/piece(s). Although you DO own the record or floppy disk once you have purchased it, you DO NOT own the actual song or file itself; nor (for an audio recording) do you own the recording of that song: in effect YOU are licensed to use or listen to that particular song or SSEYO Koan's interpretation of the file (in real-time)YOURSELF. The SSEYO Koan file is a literary work and so enjoys the full protection of International Copyright law. Licensing software for use is the normal situation for software, and the originator of the software is the copyright holder under International Copyright law.

Note: The reason a person has to pay the Performing Rights Society a fee when playing pre-recorded music in public is that a large number of people are listening to it, and not just you.

Live output from the SKME

Where the SKME is composing music in real time, we call this 'live' use (see below). Our standard licence allows you to use the product for personal use where the Software is 'in use' on a computer when it is loaded into the temporary memory or installed in the permanent memory of that computer. However, we specifically preclude use of this software in an unattended mode of operation for any purpose whatsoever, other than for personal use (by attended use we mean you as an individual are controlling it, interacting with it or playing it). We also preclude use for public broadcast (please see the software licence accompanying this product).

This means you can use SSEYO Koan products for all your daily personal requirements whatever they may be. But, if you want to use any SSEYO Koan product in an unattended form (i.e. no-one is regularly attending it) for non-personal use (i.e. company or business) you will need a special licence from us.

Examples:

Use covered by standard licence

Live attended use

Personal

SSEYO Koan personal background music on your work/ home computer
Creating your own SSEYO Koan pieces with SSEYO Koan Pro

Yes
Yes

Non-personal (i.e. used by or for business)

Presentations with SSEYO Koan background (loaded with presentation)
Live use at gigs, DJ work, performances

Yes
Yes

Live unattended use

Personal

Wake up to it in the morning
General music around the house

Yes
Yes

Non-personal (i.e. used by or for business)

Sending out Product Demo disks with SSEYO Koan music	No
SSEYO Koan music for telephone hold systems	No
SSEYO Koan music for hotel foyers, reception rooms, lobbies, rest areas	No
SSEYO Koan music for environmental control systems (buildings etc.)	No
SSEYO Koan music for broadcast (radio stations/ in flight rest music etc.)	No

SSEYO would be pleased to discuss our licensing terms with you for Unattended, non-personal use, as outlined above.

SSEYO Koan Pro

SSEYO Koan Pro is the sophisticated Authoring System provided by SSEYO to create the pieces that you can play in SSEYO Koan Web or SSEYO Koan Plus.

We have produced a demo version for you to evaluate and see what amazing things you can do with Koan music. SSEYO Koan Pro Demo is available from our [website](#). Please also check out our website for other demo pieces which we will post from time to time.

SSEYO Koan Pro Demo has the following limitations over the full version:

- No saving of pieces or templates
- No MIDI file save
- No exporting of patterns to MIDI file
- Plays for 5 minutes before it stops playing. You can restart it by pressing play.
- Only a few sample pieces and templates.

Note: The demo version is only to be used for demonstrating and evaluating what SSEYO Koan Pro can do.

Koan Pro features:

Nearly 150 parameters to shape your musical pieces:

- Up to 50 separate voices (soundcard dependent)
- Rhythm templates and demo pieces provided
- Separate windows for Power, Voice X, Rules and Piece level parameter views
- 5 different voicetypes: Ambient, Rhythmic, FixedPattern, Follows or RepeatBar. Use Follows voices to `follow` another, allowing easy counterpoint; use RepeatBar voices to repeat material from earlier bars; use Ambient voices to create notes with durations in milliseconds, seconds or fractions of a beat
- 4 music rule types: Scale, Harmony, Next Note and Rhythm
- Envelopes to control Volumes, Pans, Velocities, and Tempo
- Controllers for Reverb/ Chorus/ Portamento/Sostenuto/Expression/ Damper/ Softness and 4 special Koan ADSR controllers
- Support for GS/GM patches
- Creative Labs AWE32: Define in your piece and auto-load multiple Creative Labs AWE32 SoundFont™ compatible banks from any directory location (could be a CD ROM on your D: drive for instance). Controllers for all 25 EMU8000 LFOs, Oscillators and Envelopes on the AWE32.
- Gravis Ultrasound/ Ultrasound MAX: Define in your piece and auto-load Gravis Technology patch banks from any single directory location (could be a CD ROM on your D: drive for instance).
- Roland SCC1/Yamaha DB50XG: Controllers for Attack/Decay/Release
- Import MIDI files & record your SSEYO Koan piece output to a type 0 MIDI file
- Random patch changing as a voice is playing
- Mutation of phrases
- Micro-level controls for real time, subtle random changing of a voice's volume, pitch, start time and modulation
- Support for WAV files, stored externally or even used from a CD ROM
- Lists of values for every parameter
- Create encrypted .SKP demo pieces that will stop playing after a pre-determined time (allowing you to create and send out encrypted demos of your work, to be played with SSEYO Koan Web); add pieces notes for others to see when they load your pieces
- Extensive mouse and keyboard support
- Comprehensive online help system

Each of the pieces it creates contains a number of voices, and each voice plays an instrument. The sound and output of each voice is controlled by a number of parameters which can be given envelope values so that they vary in a controllable and predetermined way over the life of the piece. The notes that each Voice plays are governed by various rules as well.

Should you want further details please contact SSEYO directly or refer to the latest list of dealers/distributors in the README.TXT accompanying Koan Web.

SSEYO Koan Albums/ SSEYO Koan Plus

SSEYO will be releasing a number of Koan Albums. The SSEYO albums will come with the SSEYO Koan Plus software for playing back the albums.

In April 1996 SSEYO published the Koan title - Generative Music 1 - by the Ambient Music pioneer and producer of U2/David Bowie - **Brian Eno**. Please see our website for details.

Note: The Brian Eno Koan product is released specifically for the AWE32 because of the amazing things he does with the EMU8000 controllers in the card

Koan Plus software is similar to Koan Web in that it is a player, but it has a number of extended capabilities (in addition to those of Koan Web):

- Creation of albums of Koan pieces (SKP/SKD/SKT) and MIDI files
- Playback of Albums of these pieces and MIDI files
- Muting of the playing piece
- Random/Ordered playlist selection
- Can be used as an upgrade to Koan Web and will play pieces over the Web

It is ideal as a standalone Koan Music player on your PC.

The next SSEYO Koan album - Float - will be released in July (check our website for final details) on both CD ROM and audio CD (one studio cut of a number of the pieces). It will come with a large number of pieces specially written for the following soundcards:

- Creative Labs AWE32/ SB32
- Creative Labs SoundBlaster 16
- Yamaha DB50XG
- Yamaha SoftSynth
- Gravis Ultrasound and Ultrasound MAX
- Roland SCC1
- Orchid NuSound PnP
- IBM MWave

Support/ serial number/ registration

Sorry, but no support is provided on Koan Web

See also

[SSEYO](#)

Setting up the MIDI Mapper

Note: We recommend you use the Windows 3.1 or 3.11 MIDI Mapper, but we will pick up any other Windows MIDI driver if the MIDI Mapper is not installed. This section is not appropriate for the Windows 95 MIDI Mapper, for which we refer you to your Windows 95 documentation.

General reference

The MIDI Mapper is a very useful Windows utility and it makes it easier for software to communicate with your sound card or MIDI interface card. It acts as an intermediary through which Koan Pro talks to your sound card. It basically one big patch map (or post office) which allows you to match up your sound card with any software generating a MIDI output. Koan Pro supports the General MIDI standard, so, if not already set-up in this mode, you will need to set up the MIDI Mapper to match this standard.

Incidentally, Windows 3.1 supports a number of sound cards/devices, and these are currently the Creative Labs Sound Blaster v1.0/ v1.5, Roland MPU401, Roland LAPC1, Ad Lib, Media Vision Thunder Board etc. If your card/interface is not apparently supported by Windows then the card/interface manufacturer should produce a 'driver' that allows it to talk to the MIDI Mapper. To see the list of drivers supported (and to make sure your sound card is configured properly) select the Drivers icon in the Program Manager Control Panel. If your card is not already set up, refer to the card/interface maker's instructions.

The MIDI Mapper comes with 4 patch maps as standard; MT32, MT32 perc, Prot/1 and Prot/1 perc. The MT32 perc is actually set up as the General MIDI patch map (quite obvious really), but for the example below we are going to assume that you have a Roland SCC1 card fitted, and you need to create a patch map for this card.

We have chosen this card to represent the case of those cards which do not have a preset setup in the MIDI Mapper. Although you may be able to follow the example, we do recommend that you have a quick read through the section on the MIDI Mapper in the Windows manual before proceeding.

Note: You should also follow the instructions provided by the supplier of your sound card/interface, because you may need a special set-up for some cards. SoundBlaster, MediaVision and similar cards do not always support the 128 General MIDI sounds.

Double click on the Control Panel icon in the Program Manager, and then double click on the MIDI Mapper (if there is no MIDI Mapper, then you have not properly set-up your sound card, or there is no sound card installed - refer to the Windows manual).



Windows 3.1 MIDI Mapper

Select Show Patch Maps and open the Name drop box. You will see there is no General MIDI set-up up so we are going to create one.

Select New and in the Name and Description boxes type General MIDI, then press OK.

You are presented with a table with the headings Src Patch, Src Patch Name, Dest Patch, Volume %, and Key Map name. We want to set up a General MIDI patch map, and this entails matching the Src Patch

to the Dest Patch.. Kindly, this is the default. Press the button at the top (which toggles between '1 based patches' and '0 base patches') so that the first Src patch is 1, which corresponds to acoustic grand piano. Make sure the Key Map name is 'none' and press OK.

Next, select Show Setup and open the Name drop box. You will see there is no General MIDI set-up (however, Extended MIDI really is General MIDI, without the Patch Map set up properly!) so we are going to create one.

Select New and in the Name and Description boxes type General MIDI, then press OK.

You are presented with a table with the headings Src Chan, Dest Chan, Port Name, Patch Map Name and Active. The Src and Dest Channel matchings are beyond the scope of this manual, but we are going to pair 1 with 1, and 2 with 2 etc. The Port Name is the driver you have set up to talk to your sound card.

Go through each of the 16 Src Channels and set Port Name to the driver your card is using (e.g. MIDI 401 for the SCC1), and Patch Map name to the General MIDI patch map we have just made. Make sure all of the Active boxes is ticked.

Note: Koan Pro requires that channel 10 is reserved for drums/percussion

Your sound card should now be ready to work with Koan Pro.

Common Questions

Below are some common questions asked about SSEYO Koan Web/ Koan Plug-in. To see the answer to the question, click [ANSWER](#).

1. Why do I get no sounds at all coming out of my soundcard? [ANSWER](#)
2. Why do I get different quality sounds on different cards? [ANSWER](#)
3. Why can some pieces sound jumpy? [ANSWER](#)
4. Why do pieces sometimes take time to stop? [ANSWER](#)
5. Why do pieces using Creative Labs SoundFont compatible banks or Gravis Ultrasound patches not seem to play correctly? [ANSWER](#)
6. I am using an external synth module and SSEYO Koan Pro keeps crashing [ANSWER](#)
7. Reverb and chorus do not seem to work correctly [ANSWER](#)

Q: Why do I get no sound (or only a few sounds) coming out of my soundcard

A: Firstly check that the Mixer application (if any) used by your soundcard has its sliders for MIDI and Volume turned up and the channels are not muted. Make sure your MIDI Mapper is set up correctly. Look in the on-line help or refer to your soundcard instruction manual. Some soundcards come with default configurations that only use the first 10 MIDI channels (e.g. AWE32), and Koan pieces often use more. **Win 3.1:** You should make sure that all 16 channels are 'active'.

Another common problem can be you are using the wrong MIDI output:

Win 3.1: If you have the 'Port Name' in the MIDI Mapper 'Setups' to be an 'out', i.e. SB16 Out. This has the effect of sending the MIDI information to the MIDI output port, rather than to the synthesizer chip on the soundcard, which is used to generate the sound. Access this through the Control Panel, MIDI Mapper, Setups and select Edit. Click on the Port name combo box and select the appropriate driver (e.g. Voyetra Super Sapi FM driver). Refer to your soundcard documentation for more information.

Win 95: Make sure the MIDI output for you your Multimedia Properties for MIDI does not point to MIDI for external MIDI port

Koan: Make sure in Setup options your MIDI Output Device is not a MIDI Out (where the MIDI information never gets sent to your soundcard synthesiser but gets sent to the MIDI output port instead), e.g. SB16 MIDI Out.

Q: Why do I get different quality sounds on different cards?

A: Although General MIDI is positioned as being a savior for the music industry, as it defines a standard mapping for 128 different sounds, each soundcard has different qualities of sound for each 'patch' (various pre-defined sounds your soundcard plays). This means that the instruments that the pieces use will sound better/worse depending on the soundcard on which you play the piece, or on which card the piece was originally authored (no author can check that their piece sounds good on every soundcard - which is where General MIDI provides only *some* help, in practice). If you really do not like the particular patch on your card that corresponds to one used in a piece you have to either not play the piece, contact the author(!) or use the MIDI mapper to reassign say patch 39 to play as patch 40.

Also, some soundcards support reverb or chorus (and some dont) which is very useful for ambient pieces. SSEYO Koan pieces can also be written to take advantage of other useful controls, such as portamento or modulation for instance, but not all cards support these parameters. The volume of each patch will also vary from soundcard to soundcard.

Q: Why can some pieces sound jumpy?

A: Some SSEYO Koan pieces can be very complex, and to compose and play these in real time requires considerable processing power. We have developed a system whereby the SKME will compose in advance, as far ahead as you want it to, to provide a buffer of music that will continue to play should other applications require your processors attention. If a piece sounds jumpy, the reason is probably that your processor just has not got the resources to carry out all the calculations it needs to create the flowing music. The first thing to try is to increase the Compose Reaction Time (in Options Setup off the menu) to adjust how far in advance it actually composes.

If this does not provide a solution you may need to set your Resolution and Cycle values (Options Setup) to higher values, maybe 50, 100, 200 or even higher. Higher values can even sometimes help to give it that extra smoothness at the expense of rhythmic accuracy, (which for highly rhythmic piece could make is sound sloppy, rather than jumpy) even with more powerful machines. If the software is making too many demands on your processor you can select Low priority mode.

Q: Why do pieces sometimes take time to stop?

A: The time it takes for a piece to stop is directly governed by your soundcard windows driver, and some are faster than others. If you are using the SB16 MIDI Out device to get SSEYO Koan Web/Koan Plug-in to drive an external synth you will find the piece can take a few seconds to stop. This delay is to do with the driver and is not the fault of SSEYO Koan Web/Koan Plug-in.

Q: Why do pieces using Creative Labs SoundFont Banks or Gravis Ultrasound patches not seem to play correctly?

A: Both cards

Make sure you have the correct path information included in the Options Setup Dialog and the Koan File Supplementary Search Path box. This determines where the Koan Music Engine will look for special patches, banks or WAV files. When you play a piece across the WWW that piece is first downloaded into a temporary directory. If you have put your SoundFont bank in another directory the SKME will not be able to find it unless you define this path in the Koan File Supplementary Search Path.

Creative Labs SoundFont compatible banks on an AWE32

If you have tried to load too large an SBK for the memory available on your AWE32, then the SBK will not load at all. Try setting up the AWE32 Control Panel to use the GM SoundFont Bank, which will free up maximum memory.

Check that the Creative Labs Mixer settings for MIDI and Volume are both up and not muted.

Gravis patches

Make sure you set up your MIDI Mapper to use the 'Ultrasound' setup (for patch caching apps) and not any of the other setups like Ultra 1024, Ultra 512 or Ultra 256 which are for non-patch caching applications. If you don't do this then some patches will be loaded incorrectly.

You may have tried to load too many patches into the onboard SRAM and so some of the patches have been unloaded. Gravis cards operate on a FIFO (First In First Out) principle.

Check that the Ultrasound Mixer settings for MIDI and Volume are both up and not muted.

Q: I am using an external synth module and SSEYO Koan Web/Koan Plug-in keeps crashing

A: Make sure you are not using your external synth setup up to use its own internal MIDI clock. It should be set up to use an external MIDI clock.

Q: Reverb and chorus do not seem to work correctly

A: Reverb and chorus settings will only have any effect on soundcards/ synths that support them. At the time of going to press cards like Creative labs SB16, Gravis Ultrasound and Orchid NuSound do not provide this support.

