

ASCII Chart

CTRL	CHAR	DEC	HEX
@	NUL	0	00
A	SOH	1	01
B	STX	2	02
C	ETX	3	03
D	EOT	4	04
E	ENQ	5	05
F	ACK	6	06
G	BEL	7	07
H	BS	8	08
I	HT	9	09
J	LF	10	0A
K	VT	11	0B
L	FF	12	0C
M	CR	13	0D
N	SO	14	0E
O	SI	15	0F
P	DLE	16	10
Q	DC1	17	11
R	DC2	18	12
S	DC3	19	13
T	DC4	20	14
U	NAK	21	15
V	SYN	22	16
W	ETB	23	17
X	CAN	24	18
Y	EM	25	19
Z	SUB	26	1A
[ESC	27	1B
\	FS	28	1C
]	GS	29	1D
^	RS	30	1E
_	US	31	1F
	SP	32	20
	!	33	21
	"	34	22
	#	35	23
	\$	36	24
	%	37	25
	&	38	26
	'	39	27
	(40	28
)	41	29
	*	42	2A
	+	43	2B
	,	44	2C
	-	45	2D
	.	46	2E
	/	47	2F
	0	48	30
	1	50	32
	3	51	33
	4	52	34

5	53	35
6	54	36
7	55	37
8	56	38
9	57	39
:	58	3A
;	59	3B
<	60	3C
=	61	3D
>	62	3E
?	63	3F
@	64	40
A	65	41
B	66	42
C	67	43
D	68	44
E	69	45
F	70	46
G	71	47
H	72	48
I	73	49
J	74	4A
K	75	4B
L	76	4C
M	77	4D
N	78	4E
O	79	4F
P	80	50
Q	81	51
R	82	52
S	83	53
T	84	54
U	85	55
V	86	56
W	87	57
X	88	58
Y	89	59
Z	90	5A
[91	5B
\	92	5C
]	93	5D
^	94	5E
~	95	5F
·	96	60
a	97	61
b	100	64
e	101	65
f	102	66
g	103	67
h	104	68
i	105	69
j	106	6A
k	107	6B
l	108	6C
m	109	6D
n	110	6E

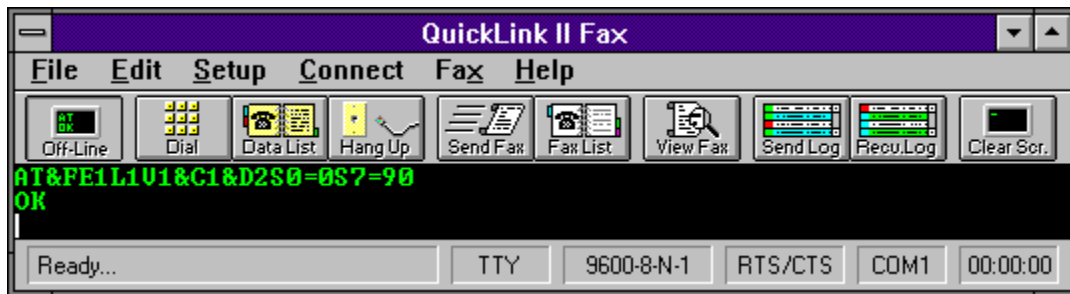
o	111	6F
p	112	70
q	113	71
r	114	72
s	115	73
t	116	74
u	117	75
v	118	76
w	119	77
x	120	78
y	121	79
z	122	7A
{	123	7B
	124	7C
}	125	7D
~	126	7E
DEL	127	7F



On-Line



The **On Line/Off Line** option in the **Connect Menu** opens and closes the **Terminal Window**.



Dial Modem



The **Dial** option in the **Connect Menu** allows you to manually dial and connect to another computer.

Number To Dial

Enter the number you wish to dial.

Dial Prefix

Enter any special numbers or characters that need to be dialed before the actual phone number.

Dial Timeout

Enter the number of seconds QuickLink will wait for a response from a dialed phone number.

Re-dial Delay

Enter the number of seconds to wait before attempting to re-dial the previously busy phone number.

Re-dial Attempts

Specifies the number of times to re-dial a busy phone number.

Re-dial On Busy

Causes QuickLink to redial when a busy signal has been detected.

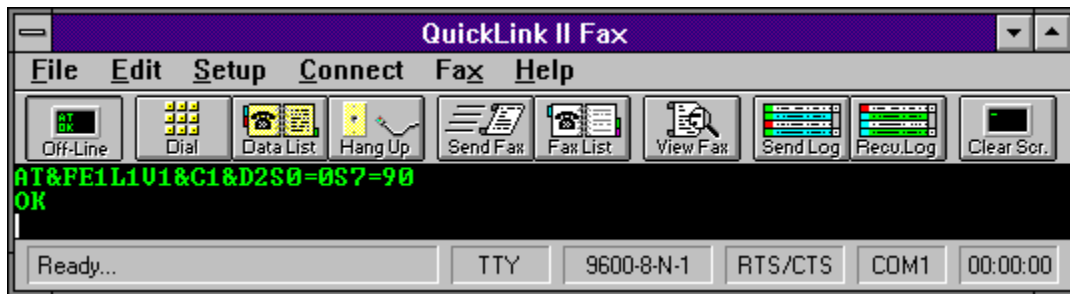


Hang-up Phone Line



The **Hang-up** option in the **Connect Menu** causes QuickLink to issue a hang-up command to the modem.

The hang-up command only applies for data connections, not fax. The hang-up command sequence is defined in the Modem Setup dialog under the **Setup Menu** where it can be modified.



Send Break Condition

The **Send Break** option in the **Connect Menu** sends a command break to the receiving computer.

Command breaks are necessary on some systems to act as a cancel command. This feature is not in use much today but is necessary for compatibility with older systems. If the computer system you are connected to requires a break signal for cancellation, use the **Send Break** command.



Data Phone List



The **Phone List** option in the **Connect Menu** allows frequently called numbers to be stored and dialed.

To select an entry from the phone list, click on the desired entry and then click the **Dial** button or simply double-click on the entry.

Multiple data phone lists can be selected for data communications. To select a different data phone list, click on the **Browse** button. Enter the name of an existing file or enter a new file name and a new data phone list will be created.

Frequently called numbers may be added, edited or deleted from the phone list. To delete an entry, click on the entry and then click the **Delete** button. You will be prompted to confirm the deletion.

Related Topics:

[Adding or editing phone list entries.](#)



Run Script

The **Run Script** option in the **Connect Menu** runs the commands found in the indicated script file.

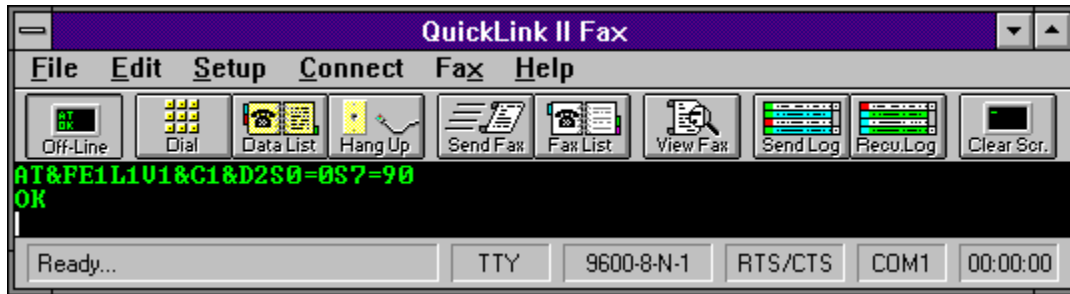
Script files contain commands for automatically logging on to your favorite on-line services. Commands can be issued for outputting text, waiting for input from the connected computer, or even dialing a number.

Script files are plain ASCII text files that can be created in **Windows Notepad** or your favorite ASCII text editor.

To select a script to run, click on the file name and then click on the **OK** button. You may also double-click on the file name. Scripts may also be run by associating them with a Macro Keys.

Related Topics:

[Script Language Reference](#)



Connect to CompuServe

The **CompuServe** option in the **Connect Menu** accesses the CompuServe on-line service.

Before using this option, you must setup your CompuServe account information in the Account Information Dialog found in the **Setup Menu**.



Connect to DowJones

The **Dow Jones** option in the **Connect Menu** accesses the Dow Jones on-line service.

Before using this option, you must setup your Dow Jones account information in the Account Information Dialog found in the **Setup Menu**.

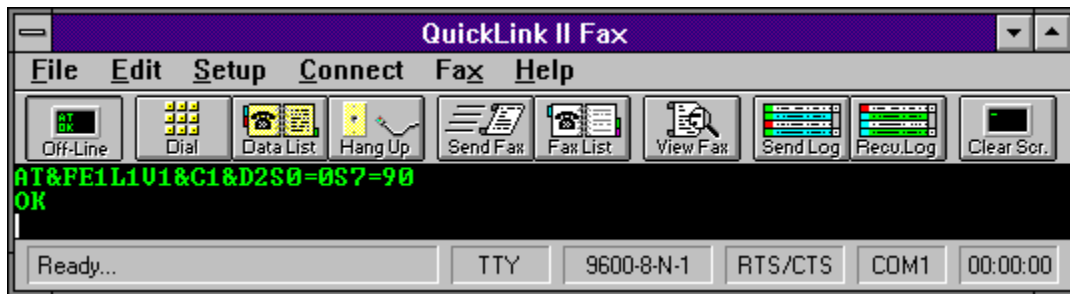


Connect to GENie

The **GENe** option in the **Connect Menu** accesses the GENie on-line service.

Before using this option, you must setup your GENe account information in the Account Information Dialog found in the **Setup Menu**.

Do not remove this directory. CMW 8/95



Copy All

The **Copy All** option in the **Edit Menu** copies the entire screen buffer to the clipboard.

All information, including data in the screen-buffer and the terminal window, will be saved to the clipboard. Data can then be transferred from the clipboard to other applications.

Related Topics:

[Paste To Host](#)

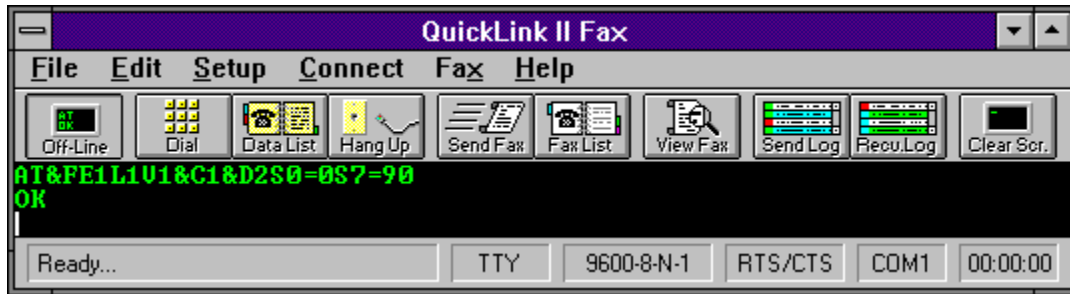


Paste To Host

The **Past To Host** option in the **Edit Menu** sends any information in the clipboard over the modem to the receiving computer. Data in the clipboard must be in a text format to be sent. Graphics such as bitmaps from PaintBrush cannot be sent using **Paste To Host**.

Related Topics:

[Copy All](#)



Clear Screen



The **Clear Screen** option in the **Edit Menu** clears the entire terminal window.



Start/Stop Session Timer

The **Start/Stop Timer** option in the **Edit Menu** starts or stops the session timer in the lower right corner of the status bar.

A timer can be activated to keep track of time spent on-line. This can be useful for calculating connect charges to services such as CompuServe.

Select **Start Timer** from the **Edit Menu** to start the timer. The menu option will change to **Stop Timer** so that it may be stopped.

If the status bar is not displayed, the timer will still proceed.



Reset Timer

The **Reset Timer** option in the **Edit Menu** resets the session timer to 00:00:00.

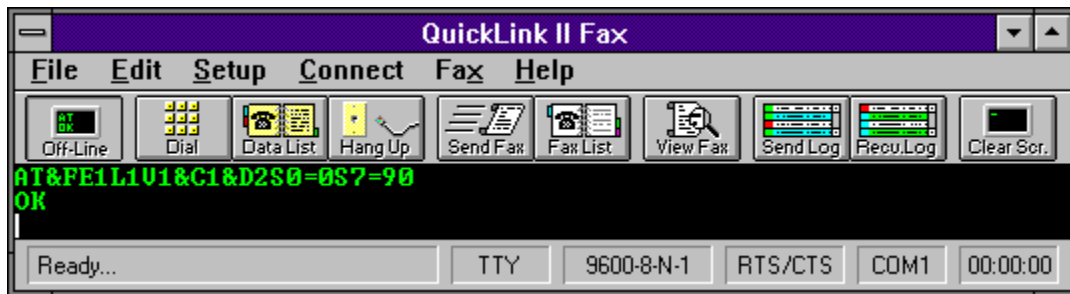
If the status bar is not displayed, the timer will still be reset.



Show/Hide Button Bar

The **Show/Hide Button Bar** option in the **Edit Menu** shows or hides the Button Bar at the top of the QuickLink window.

The Button Bar allows quick access to common QuickLink features. There are two states of the Button Bar depending on whether the terminal window is open or closed. When the terminal window is open, all of the available buttons are displayed in the Button Bar. When the terminal window is closed, the Dial and Data List buttons are omitted.



Show/Hide Status Bar

The **Show/Hide Status Bar** option in the **Edit Menu** shows or hides the Status Bar at the bottom of the QuickLink window.

The status bar displays important information regarding the current state of QuickLink. Six items of information are displayed:

1. Status message
2. Current terminal emulation
3. Current line settings
4. Flow control currently in use
5. Communications port being used
6. The session timer

When the terminal window is closed, the status bar will display only the status message, comm port, and session timer.

This status bar field displays a message explaining the current menu option or action.

This status bar field displays the current terminal emulation. Single clicking on this field will bring up the Terminal Options Dialog where the terminal emulation type can be changed.

This status bar field displays the current line settings. Single clicking on this field will bring up the Line Settings Dialog where the line setting can be changed.

This status bar field displays modem flow control type currently in use. Single clicking on this field will bring up the Line Settings Dialog where the flow control type can be changed.

This status bar field displays the current communications port being used. Single clicking on this field will bring up the Modem Setup Dialog where the comm port can be changed.

This status bar field displays the session timer. Single clicking on this field will start and stop the timer. Double clicking on this field will reset the timer to 00:00:00.



Run Notepad

The **Run Notepad** option in the **Edit Menu** runs the Windows Notepad program.

Notepad can be used to create text files to be faxed or sent by way of a file transfer, or it can be used for creating and editing QuickLink script files.

NOTE: Notepad cannot be used to modify received fax files. In order to modify received fax files, OCR (Optical Character Recognition) software must be used. Received fax files are stored in a graphics format and must be converted to text using the OCR software before they can be modified using Notepad or any other text editor.

Do not remove this blank page. CMW 8/95

Error Codes

100 - 199	<u>Modem Errors</u>
200 - 299	<u>File Errors</u>
300 - 399	<u>Send Fax Errors</u>
400 - 499	<u>Receive Fax Errors</u>
500 - 599	<u>Miscellaneous Errors</u>

Modem Errors

Error: 101 Unable to open COM port.
Error: 102 Unable to detect modem.
Error: 103 Modem not a fax modem.

Error: 101

Unable to open COM port.

Cause

The COM port specified in setup could not be opened. Most likely, the COM port is not present on the system.

Remedy

Check the COM port setting in Modem Setup to ensure that the correct COM port is chosen. If the correct port is chosen, the jumper settings on the modem may be set incorrectly or the modem may be defective.

Error: 102

Unable to detect modem.

Cause

A modem could not be found on the specified COM port.

Remedy

Check the COM port setting in Modem Setup to ensure that the correct COM port is chosen. If the correct port is chosen, the jumper settings on the modem may be set incorrectly or the modem may be defective.

The modem may be in an unstable state. Exiting Windows and turning the computer off and on and rerunning Windows may solve the problem.

Error: 103

Modem not a fax modem.

Cause

A fax modem could not be found on the specified COM port.

Remedy

Ensure that the correct type of software is being used with the modem. For example, a class 2 fax modem should be used with class 2 software. Check for any memory or port conflicts. Memory resident programs can cause unpredictable results with a fax modem.

File Errors

<u>Error: 201</u>	Unable to create necessary file.
<u>Error: 202</u>	Out of disk space.
<u>Error: 203</u>	Error reading file.
<u>Error: 204</u>	Error writing file.
<u>Error: 205</u>	Unable to close file.
<u>Error: 206</u>	Unable to access file.
<u>Error: 207</u>	Unable to open fax file.
<u>Error: 208</u>	Unable to open exchange file.
<u>Error: 209</u>	Unable to open setup file.
<u>Error: 210</u>	Unable to create/send cover page.
<u>Error: 211</u>	Unable to create/send headers.
<u>Error: 212</u>	Unable to open file.
<u>Error: 213</u>	Error reading exchange file.

Error: 201

Unable to create necessary file.

Cause

QuickLink could not create a necessary file on your disk. This could be due to insufficient disk space or a corrupted disk.

Remedy

Ensure that you have enough disk space on your drive. You should have at least 1 megabyte of disk space free at all times. Run the DOS CHKDSK program to check the structure of your hard disk.

Error: 202

Out of disk space.

Cause

QuickLink did not have enough disk space to create or write to a file.

Remedy

Free up some disk space by removing unnecessary files and programs.

Error: 203

Error reading file.

Cause

QuickLink could not read from a file on your disk. This could be due to a corrupted disk or program.

Remedy

Run the DOS CHKDSK program to check the structure of the disk. If the error persists, reinstall the QuickLink software. Be sure to remove all files relating to the QuickLink software before reinstalling.

Error: 204

Error writing file.

Cause

QuickLink could not write a file to your disk. This could be due to a corrupted disk or program or not enough available disk space.

Remedy

Ensure that you have enough disk space available. You should have at least 1 megabyte of disk space free at all times. Run the DOS CHKDSK program to check the structure of the disk. If the error persists, reinstall the QuickLink software. Be sure to remove all files relating to the QuickLink software before reinstalling.

Error: 205

Unable to close file.

Cause

A file could not be closed on the system.

Remedy

Exit Windows, reboot the computer and retry the fax transmission.

Error: 206

Unable to access file.

Cause

The current user on a network does not have access to the file.

Remedy

The user must gain access rights to the file in order to use the application.

Error: 207

Unable to open fax file.

Cause

QuickLink could not open the fax file for sending. This could happen if a file is scheduled to send and then deleted before QuickLink could send the file.

Remedy

Recreate the file. If the error persists, you may need to reinstall the QuickLink software.

Error: 208

Unable to open exchange file.

Cause

QuickLink could not open the schedule file for sending. This could happen if the schedule file is deleted by accident.

Remedy

Reschedule the faxes.

Error: 209

Unable to open setup file.

Cause

The file SMSSETUP.DAT could not be opened. This is the file in QuickLink that holds all setup information.

Remedy

Check for the existence of the file SMSSETUP.DAT in the QuickLink subdirectory. If the file does not exist, exit the QuickLink software and reenter to recreate the file.

Error: 210

Unable to create/send cover page.

Cause

QuickLink could not send the cover page file. The file could have been deleted.

Remedy

Recreate the fax to be sent. If the error persists, check for available disk space. Be sure that at least 1 megabyte of disk space is available.

Error: 211

Unable to create/send headers.

Cause

QuickLink could not send the header page file. The file could have been deleted.

Remedy

Recreate the fax to be sent. If the error persists, check for available disk space. Be sure that at least 1 megabyte of disk space is available.

Error: 212

Unable to open file.

Cause

QuickLink could not open a necessary file.

Remedy

Recreate the fax to be sent. If the error persists, check for a corrupted disk by running the DOS CHKDSK program.

Error: 213

Error reading exchange file.

Cause

The schedule exchange file could not be read. The file may have been deleted.

Remedy

Recreate the schedule of faxes to be sent.

Send Fax Errors

<u>Error: 301</u>	No dial tone detected from modem.
<u>Error: 302</u>	Number dialed was not a fax machine.
<u>Error: 303</u>	Number dialed was busy.
<u>Error: 304</u>	No carrier detected after dial.
<u>Error: 305</u>	Error occurred during fax training.
<u>Error: 306</u>	No CONNECT message from remote.
<u>Error: 307</u>	No End Of Page acknowledgment received.
<u>Error: 308</u>	No phase D page response received.
<u>Error: 309</u>	Unknown phase D error.
<u>Error: 310</u>	No End Of Page response received.
<u>Error: 399</u>	Unknown send error.

Error: 301

No dial tone detected from modem.

Cause

QuickLink could not detect a dial tone from your modem.

Remedy

Check phone cables to be sure they are connected properly. QuickLink can be told to ignore a NO DIALTONE message by setting the option for Dial Prefix in Modem Setup.

Error: 302

Number dialed was not a fax machine.

Cause

A fax machine was not detected on the number dialed.

Remedy

Ensure that you are dialing the proper phone number.

Error: 303

Number dialed was busy.

Cause

A busy signal was detected from the modem after the specified number of re-dials.

Remedy

Re-send the fax. If a busy signal is falsely detected, you may need to tell the modem to ignore dial tones. This can be done by setting the option for Dial Prefix in Modem Setup.

Error: 304

No carrier detected after dial.

Cause

A fax machine was not detected on the number dialed.

Remedy

Ensure that you are dialing the proper phone number.

Error: 305

Error occurred during fax training.

Cause

The sender and the receiver were having problems handshaking. This could be due to an incompatibility between the two faxes.

Remedy

Retry sending the fax. If the problem persists, try sending the fax to a different machine. If the transmission is fine to the other machine, there is most likely an incompatibility between the two faxes.

Error: 306

No CONNECT message from remote.

Cause

The sender and the receiver were having problems handshaking. This could be due to an incompatibility between the two faxes.

Remedy

Retry sending the fax. If the problem persists, try sending the fax to a different machine. If the transmission is fine to the other machine, there is most likely an incompatibility between the two faxes.

Error: 307

No End of Page acknowledgment received.

Cause

The sender and the receiver were having problems handshaking. This could be due to an incompatibility between the two faxes.

Remedy

Retry sending the fax. If the problem persists, try sending the fax to a different machine. If the transmission is fine to the other machine, there is most likely an incompatibility between the two faxes.

Check for other programs conflicting with the QuickLink. Memory resident applications can cause problems with communication programs.

Error: 308

No phase D page response received.

Cause

The sender and the receiver were having problems handshaking. This could be due to an incompatibility between the two faxes.

Remedy

Retry sending the fax. If the problem persists, try sending the fax to a different machine. If the transmission is fine to the other machine, there is most likely an incompatibility between the two faxes.

Check for other programs conflicting with the QuickLink. Memory resident applications can cause problems with communication programs.

Error: 309

Unknown phase D error.

Cause

The sender and the receiver were having problems handshaking. This could be due to an incompatibility between the two faxes.

Remedy

Retry sending the fax. If the problem persists, try send the fax to a different machine. If the transmission is fine to the other machine, there is most likely an incompatibility between the two faxes.

Check for other programs conflicting with the QuickLink. Memory resident applications can cause problems with communication programs.

Error: 310

No End of Page response received.

Cause

The sender and the receiver were having problems handshaking. This could be due to an incompatibility between the two faxes.

Remedy

Retry sending the fax. If the problem persists, try sending the fax to a different machine. If the transmission is fine to the other machine, there is most likely an incompatibility between the two faxes.

Check for other programs conflicting with the QuickLink. Memory resident applications can cause problems with communication programs.

Error: 399

Unknown send error.

Cause

An unknown error occurred during the transmission.

Remedy

Retry sending the fax.

Receive Fax Errors

<u>Error: 401</u>	Remote fax failed to train.
<u>Error: 402</u>	Remote fax failed to train.
<u>Error: 403</u>	Error during End Of Fax handshake.
<u>Error: 404</u>	Error occurred during End Of Page.
<u>Error: 405</u>	Unknown phase D error.
<u>Error: 406</u>	Receive no acknowledgment during End Of Page.
<u>Error: 407</u>	Time-out on end of reception.
<u>Error: 408</u>	Not end of transmission acknowledgment received.
<u>Error: 499</u>	Unknown fax receiving error.

Error: 401

Remote fax failed to train.

Cause

The sender and the receiver were having problems handshaking. This could be due to an incompatibility between the two faxes.

Remedy

Retry receiving the fax. If the problem persists, try receiving a fax from a different machine. If the transmission is fine from the other machine, there is most likely an incompatibility between the two faxes.

Check for other programs conflicting with the QuickLink. Memory resident applications can cause problems with communication programs.

Error: 402

Remote fax failed to train.

Cause

The sender and the receiver were having problems handshaking. This could be due to an incompatibility between the two faxes.

Remedy

Retry receiving the fax. If the problem persists, try receiving a fax from a different machine. If the transmission is fine from the other machine, there is most likely an incompatibility between the two faxes.

Check for other programs conflicting with the QuickLink. Memory resident applications can cause problems with communication programs.

Error: 403

Error during End Of Fax handshake.

Cause

The sender and the receiver were having problems handshaking. This could be due to an incompatibility between the two faxes.

Remedy

Retry receiving the fax. If the problem persists, try receiving the fax from a different machine. If the transmission is fine from the other machine, there is most likely an incompatibility between the two faxes.

Check for other programs conflicting with the QuickLink. Memory resident applications can cause problems with communication programs.

Error: 404

Error occurred during End of Page.

Cause

The sender and the receiver were having problems handshaking. This could be due to an incompatibility between the two faxes.

Remedy

Retry receiving the fax. If the problem persists, try receiving the fax from a different machine. If the transmission is fine from the other machine, there is most likely an incompatibility between the two faxes.

Check for other programs conflicting with the QuickLink. Memory resident applications can cause problems with communication programs.

Error: 405

Unknown phase D error.

Cause

The sender and the receiver were having problems handshaking. This could be due to an incompatibility between the two faxes.

Remedy

Retry receiving the fax. If the problem persists, try receiving the fax from a different machine. If the transmission is fine from the other machine, there is most likely an incompatibility between the two faxes.

Check for other programs conflicting with the QuickLink. Memory resident applications can cause problems with communication programs.

Error: 406

Received no acknowledgment during End of Page.

Cause

The sender and the receiver were having problems handshaking. This could be due to an incompatibility between the two faxes.

Remedy

Retry receiving the fax. If the problem persists, try receiving the fax from a different machine. If the transmission is fine from the other machine, there is most likely an incompatibility between the two faxes.

Check for other programs conflicting with the QuickLink. Memory resident applications can cause problems with communication programs.

Error: 407

Time-out on end of reception.

Cause

The sender and the receiver were having problems handshaking. This could be due to an incompatibility between the two faxes. Even though this error occurred, the fax was probably transmitted correctly.

Remedy

Retry receiving the fax. If the problem persists, try receiving the fax from a different machine. If the transmission is fine from the other machine, there is most likely an incompatibility between the two faxes.

Check for other programs conflicting with the QuickLink. Memory resident applications can cause problems with communication programs.

Error: 408

No End of Transmission acknowledgment received.

Cause

The sender and the receiver were having problems handshaking. This could be due to an incompatibility between the two faxes.

Remedy

Retry receiving the fax. If the problem persists, try receiving the fax from a different machine. If the transmission is fine from the other machine, there is most likely an incompatibility between the two faxes.

Check for other programs conflicting with the QuickLink. Memory resident applications can cause problems with communication programs.

Error: 499

Unknown fax receiving error.

Cause

An unknown error occurred during the fax transmission.

Remedy

Retry receiving the fax.

Miscellaneous Errors

Error: 501 Unable to allocate memory.
Error: 502 The selected document contains 0 pages.

Error: 501

Unable to allocate memory.

Cause

QuickLink could not allocate enough memory to run the current task.

Remedy

Quit other running applications to free up more memory.

Error: 502

The selected document contained 0 pages.

Cause

The fax document contained 0 pages. The file is most likely corrupted.

Remedy

Reconvert the fax file.



Send Fax



The **Send Fax** option in the **Fax Menu** allows you to send faxes to remote locations.

Select the file that you would like to send by clicking on the file name and then clicking the **Add** button. Multiple files may be selected at one time by clicking on each file before clicking on the **Add** button.

If the file selected has not already been converted to a faxable format (*.QFX), QuickLink will convert the file for you. A dialog will appear asking you the format of the document to be converted. Valid formats that QuickLink can convert are ASCII TEXT, BMP, PCX, DCX, TIFF, and MacPaint. Be sure you indicate the right type for your file.

NOTE: Do not confuse ASCII TEXT files with word processor files. ASCII TEXT files do not have any formatting as do word processor documents. An example of an ASCII TEXT file is a document created in Windows Notepad.

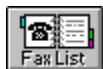
After selection of the document type, the file name will be placed in the right column of the dialog box. This column is for the files to be sent. When all files have been selected, click the **OK** button. The Send Fax Dialog will then allow you to indicate where and when the fax should be sent.

Related Topics:

- [Send Fax Dialog](#)
- [Fax Phone List](#)
- [Convert Documents](#)
- [View Fax Log](#)
- [View Fax Schedule](#)
- [How To Send A Fax](#)



Fax Phone List



The **Fax Phone List** option in the **Fax Menu** allows you to send faxes to frequently called numbers.

Faxes can be sent to single or multiple locations using the fax phone list. The fax phone list can store as many numbers as can be held in RAM. The lower the amount of RAM available, the smaller the number of entries which can be stored.

Selecting a Fax Phone List

Multiple fax phone lists can be created and maintained. To view a different fax phone list or create a new one, click on the **Browse** button. Enter the name of an existing file or enter a new file name and a new fax phone list will be created.

Selecting a Fax Phone List entry

To select an entry from the fax phone list, click on the entry in the list and then click the **Mark** button. If you are only going to be selecting one entry, you can double-click on the entry. This will mark the entry and exit you from the fax phone list dialog. You can mark as many entries as you like to send the fax to. An icon will appear next to all marked entries. To select multiple entries at one time, you may select the **Mark Group** button. The **Mark Group** button will mark every entry in the fax phone list with the same group character as the currently highlighted entry.

Entries can be unmarked by clicking on the entry and then clicking on the **Un-Mark** button. The same applies for un-marking an entire group.

Adding/Editing an entry in the Fax Phone List

You can add an entry into the Fax Phone List by clicking on the **Add** button. To edit an existing entry, click on the entry in the list and then click on the **Edit** button.

There are four fields for each entry in the Fax Phone List:

1. Name
2. Company Name
3. Fax Phone Number
4. Group

The only required fields are the **Name** and **Fax Phone Number** fields. Fill in the appropriate information and click on the **Add** or **Edit** button depending on which operation you are performing.

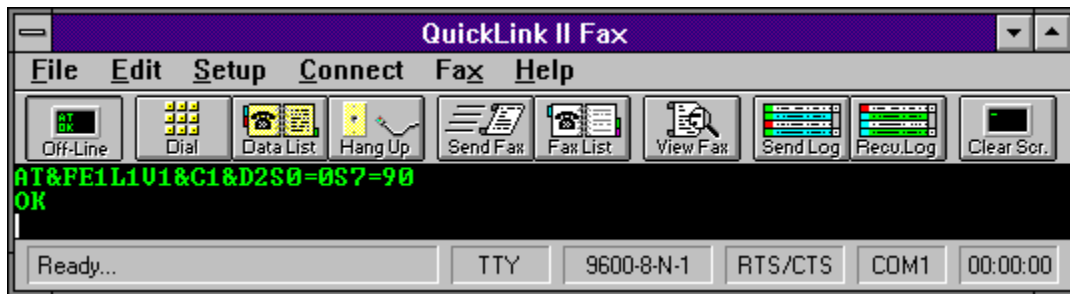
Getting more info on an entry

All entries in the Fax Phone List will only display a portion of the name, the fax phone number, and the group. The entire record can be viewed by clicking on the entry and then clicking on the **Info** button. The full fields of the entry will be displayed at the bottom of the dialog box.

When you are satisfied with your selections, click on the **OK** button to proceed to the [Send Fax Dialog](#).

Related Topics:

[Send Fax Dialog](#)
[Send Fax](#)
[Convert Documents](#)
[View Fax Log](#)
[View Fax Schedule](#)
[How To Send A Fax](#)



Send Faxes on Hold

The **Send Faxes on Hold** option in the **Fax Menu** immediately sends all faxes which were previously scheduled as **On Hold**.

When scheduling a fax, the Send Fax Dialog allows you to place a fax on hold rather than give it an actual date and time to be sent. Choosing the **Send Faxes On Hold** from the **Fax Menu** will load the Fax Manager, if not already loaded, and all faxes **On Hold** will be sent one at a time.



Load/Unload Fax Manager

The **Load/Unload Fax Manager** option in the **Fax Menu** Loads or unloads the Fax Manager application.

The Fax Manager application is the portion of QuickLink that controls all operations of sending and receiving faxes. When a fax is sent, the Fax Manager is loaded automatically for you. If you would like to receive faxes, the Fax Manager will have to be loaded manually, or by setting the option in the Receive Fax Setup Dialog to load it automatically for you.

To load the Fax Manager, select the **Load Fax Manager** option from the **Fax Menu**. The menu option will change to **Unload Fax Manager**. To unload it, select the option again.



Enable/Disable Fax Receiving

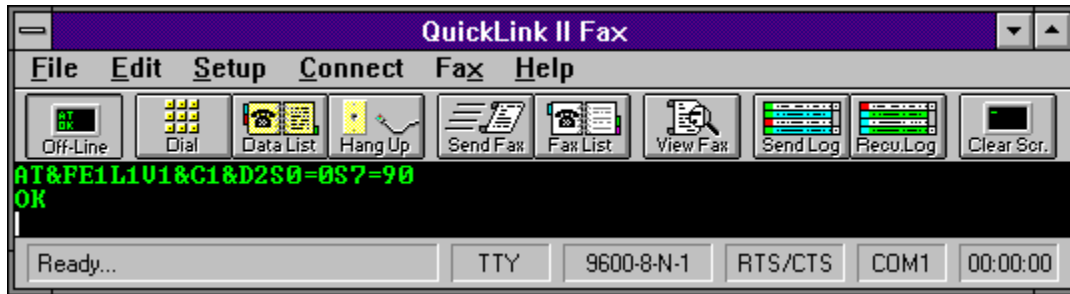
The **Enable/Disable Fax Receiving** option in the **Fax Menu** toggles the ability to receive faxes.

In order to receive faxes, the Fax Manager must be enabled for fax receiving. This option can be toggled by selecting the **Fax Receiving** option from the **Fax Menu**. When fax receiving is enabled, a check mark will appear next to the menu option. To disable fax receiving, select the option once more and the check mark will disappear.

Fax receiving can be enabled automatically when the Fax Manager is loaded by setting the option in Receive Fax Setup Dialog.

Related Topics:

[How To Receive A Fax](#)



Manual Fax Receive

The **Manual Fax Receive** option in the **Fax Menu** instructs QuickLink to immediately start receiving a fax.

Manual Fax Receive can be used when a voice call has been initiated and you wish to receive a fax without disconnecting the line and calling again.



Convert Documents



The **Convert Documents** option in the **Fax Menu** allows you to choose data files to convert into QuickLink Fax files (*.QFX) or choose fax files to convert into graphics format.

Fax Out...

Export...



Convert Documents to Fax Format



The **Import to Fax** option in the **Fax/Convert Documents Menu** converts files from their current form to QuickLink fax files (*.QFX). The original file is unchanged. Instead a new file with the same name as the original and an extension of *.qfx is created in the current directory. This fax file can then be sent by QuickLink or viewed in the Fax Viewer.

These are the valid document types that QuickLink can convert:

1. Black & White BitMap files (*.BMP)
2. Black & White Paintbrush files (*.PCX)
3. Multi-Page Black & White PCX files (*.DCX)
4. Black & White TIFF files (*.TIF)
5. ASCII Text files (*.TXT)
6. Black & White MacPaint files

Any other format must be sent from within the application that created it by using the QuickLink Printer Driver. For more information please see the section on [How to send a fax from within a Windows program](#).

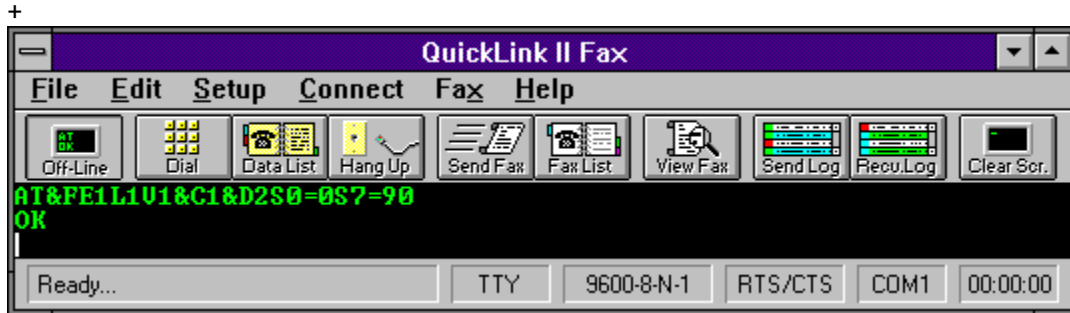
One file or a number of files may be converted at one time using **Convert Documents to Fax**. To select a file for conversion, click on the file in the list box and click the **Add** button. You may also double-click on the file name.

QuickLink will need to know what kind of document it is converting. A dialog box will appear with the list of available document types. Be sure to select the right document type. Otherwise, unpredictable results may appear on the converted file.

Select as many files as you wish to convert. When all files have been selected, click on the **OK** button. All conversion will then take place.

Related Topics:

[Export...](#)



Export Fax Files



The **Export from Fax** option in the **Fax/Convert Documents Menu** converts QuickLink fax files (*.QFX or *.REC) to black & white PCX or TIFF files.

Select the file you wish to export by clicking on the file name in the list box or typing the name in the **File** edit field and click on the **OK** button.

Type in the file name that you wish to use for the converted file. The file name will be defaulted to the base name of the QuickLink file with an extension corresponding to the type of file that will be created.

Select the type of file you wish to create. Valid types are PCX, DCX, Compressed TIFF and Uncompressed TIFF.

You may export only the pages you wish by enter the page numbers in the **From Page** and **To Page** edit fields.

If you would like to export the file at high resolution, check the **High Res** box. If the fax file is currently high resolution, you should export it at high resolution also.

When all options are selected, click the **OK** button.

Related Topics:

[Fax Out...](#)

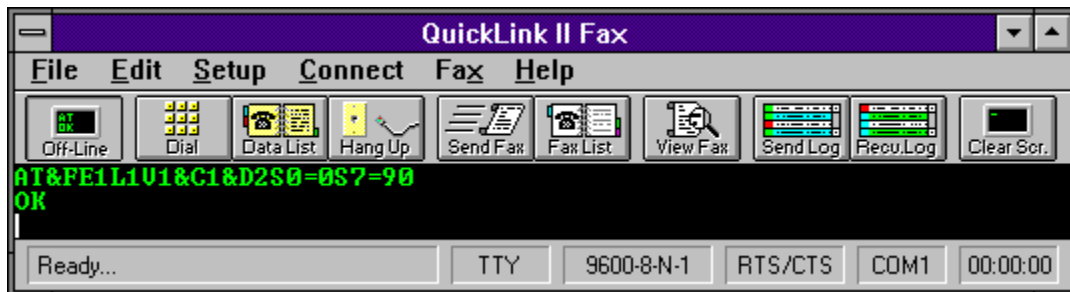


View Send/Receive Logs

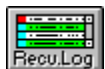
The **View Fax Log** option in the **Fax Menu** allows you to choose to view one of the fax logs.

Receive Log...

Send Log...



View Receive Log



The **Receive Log** option in the **Fax/View Fax Log Menu** shows the **Receive Fax Log**. This dialog displays important information about received faxes which includes success or failure of the transmission and information pertaining to the sending fax machine.

A list box is displayed with the date and time received, the name of the saved fax and the status of the transmission. Detailed information about the transmission may be viewed by clicking on the entry and then clicking the **Info** button.

Detailed information includes the following:

Remote ID

The ID string of the sending fax machine. If the sending fax machine did not have an ID defined, this field will be blank.

Document

The file name that the fax was saved to on your disk.

Pages

The numbers of pages sent and the number of pages received.

Resolution

The resolution at which the fax was received. This can be normal or high resolution.

Status

The status of the transmission. The status can be one of three items: OK, ERROR or CANCEL. If an error occurred, a brief explanation of the error will be displayed. A listing of all Error Codes can be viewed along with suggested fixes in on-line help by clicking on the **Errors** button.

Date/Time

The date and time the fax was received.

The **View** button will load the received fax into the Fax Viewer. Double clicking on an entry in the list box

will also load the received fax into the Fax Viewer

To easily send out a previously received fax, highlight the entry and click on the **Forward** button. The Send Fax Dialog will appear.

Entries can be removed from the logs either one at a time or all entries may be removed. To remove one entry, click on the entry to remove and then click the **Remove** button. To remove all entries, simply click the **Remove All** button.

NOTE: All received faxes are stored in the **InBox** which is indicated in the Receive Fax Setup Dialog. When deleting a log entry in the **Receive Fax Log**, the received fax is not deleted from the **InBox**. All received faxes will remain in the **InBox** until you either delete it manually or move it to another directory. If you find that you are running low on disk space, manually delete any received faxes from the **InBox** which are no longer needed.

Related Topics:

[Send Fax Log](#)

[Error Codes](#)



View Send Log



The **Send Log** option in the **Fax/View Fax Log Menu** shows the **Send Fax Log**. This dialog displays important information about sent faxes which includes success or failure of the transmission.

A list box is displayed with the date and time sent, the name of the document, the number dialed and the status of the transmission. Detailed information about the transmission may be viewed by clicking on the entry and then clicking the **Info** button. You may also simply double-click on the entry.

Detailed information includes the following:

Fax Name

The name of the person to which the fax was sent.

Number

The fax number dialed.

Document

The file name of the fax that was sent.

Pages

The total numbers of pages attempted and the total number of pages actually sent.

Resolution

The resolution at which the fax was sent. This can be normal or high resolution.

Status

The status of the transmission. The status can be one of three items: OK, ERROR or CANCEL. If an error occurred, a brief explanation of the error will be displayed. A listing of all [Error Codes](#) can be viewed along with suggested fixes in on-line help by clicking on the **Errors** button.

Date/Time

The date and time at which the fax was sent.

Duration

The duration of the fax call.

Entries can be removed from the logs either one at a time or all entries may be removed. To remove one entry, click on the entry to remove and then click the **Remove** button. To remove all entries, simply click the **Remove All** button.

The **View** button will load the Fax Viewer with the first document associated with the send event.

The **Reschedule** button allows you to reschedule a previously sent fax, whether the send was successful or not. Rescheduling a fax event will load all the associated documents into the [Send Fax Dialog](#), create new temporary files in the **OutBox**, and create a new scheduled event. The original log entry and its temporary files remain unchanged.

NOTE: In order to maintain information about faxes which are sent, QuickLink creates several temporary files in your **OutBox** which is indicated in the [Send Fax Setup Dialog](#). These temporary files are deleted by QuickLink when you delete the corresponding log entry from the **Send Fax Log**. It is important that you do not delete these temporary files manually. If you find that you are running low on disk space, though, you will want to delete any entries from the **Send Fax Log** which are not needed so their corresponding temporary files will be deleted from your **OutBox**.

Related Topics:

[Receive Fax Log](#)
[Error Codes](#)



View Fax Schedule

The **View Fax Schedule** option in the **Fax Menu** shows the **Fax Schedule**. This dialog displays information regarding scheduled fax transmissions. All entries that have been scheduled will be displayed with the Date, Time, Destination, Phone #, and Locations.

Date

Date to send the transmission.

Time

Time to send the transmission.

Destination

The name of the receiver to whom you sent the fax. If more than one destination is being sent to, only the first name will be displayed.

Phone #

The number of the destination fax. If more than one destination is being sent to, only the first one will be displayed.

Locations

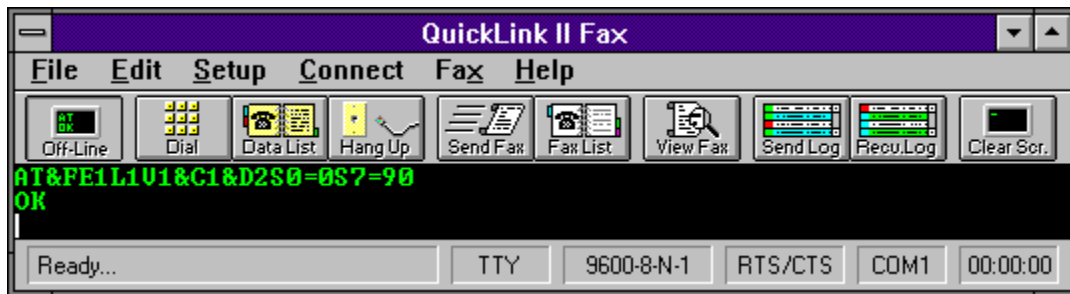
The number of locations to which the fax will be sent.

The **View** button will load the Fax Viewer with the first document associated with the send event.

The **Reschedule** button allows you to reschedule a pending fax event. Rescheduling a fax event will load all the associated documents into the Send Fax Dialog, create new temporary files in the **OutBox**, and allow you to change the time, date and cover page information for the fax event.

Entries may be removed from the schedule by clicking on the entry and then clicking the **Remove** button. All entries may be removed at one time by clicking on the **Remove All** button.

NOTE: In order to maintain information about faxes which are to be sent, QuickLink creates several temporary files in your **OutBox** which is indicated in the Send Fax Setup Dialog. It is important that you do not delete these temporary files manually. QuickLink will automatically delete these temporary files when they are no longer needed.



Send File

The **Send File** option in the **File Menu** allows your computer to send files to a remote computer when both are connected with modems. Any type of file may be sent including word processing documents, spreadsheets or even program files (EXE's).

QuickLink provides several transfer protocols for sending files. Protocols provide an efficient way to organize data and control error correction during the transfer. Error correction is necessary to ensure that data is received in the same form as it was sent. It is important to note that both computers, the sending and the receiving, must use the same transfer protocol.

QuickLink provides the following file transfer protocols:

- [ASCII File Transfer](#)
- [KERMIT File Transfer](#)
- [SUPER KERMIT File Transfer](#)
- [XMODEM File Transfer](#)
- [XMODEM-1K File Transfer](#)
- [XMODEM-CRC File Transfer](#)
- [YMODEM File Transfer](#)
- [YMODEM-G \(batch\) File Transfer](#)
- [ZMODEM File Transfer](#)
- [Compuserve B/B+ File Transfer](#)

Related Topics:

[How to send a data file](#)



Receive File

The **Receive File** option in the **File Menu** allows your computer to receive files from a remote computer when both are connected with modems. Any type of file may be received including word processing documents, spreadsheets or even program files (EXE's).

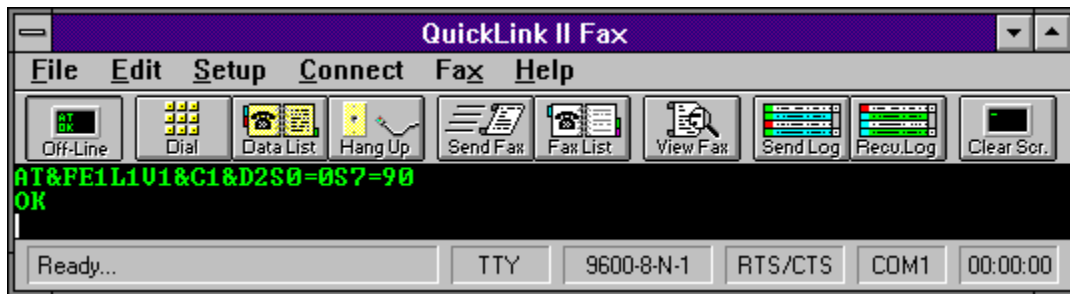
QuickLink provides several transfer protocols for receiving files. Protocols provide an efficient way to organize data and control error correction during the transfer. Error correction is necessary to ensure that data is received in the same form as it was sent. It is important to note that both computers, the sending and the receiving, must use the same transfer protocol.

QuickLink provides the following file transfer protocols:

- [ASCII File Transfer](#)
- [KERMIT File Transfer](#)
- [SUPER KERMIT File Transfer](#)
- [XMODEM File Transfer](#)
- [XMODEM-1K File Transfer](#)
- [XMODEM-CRC File Transfer](#)
- [YMODEM File Transfer](#)
- [YMODEM-G \(batch\) File Transfer](#)
- [ZMODEM File Transfer](#)
- [Compuserve B/B File Transfer](#)

Related Topics:

[How to receive a data file](#)



Capture Text

The **Capture Text** option in the **File Menu** is used for saving information that appears in the terminal window to a text file. The file can then be edited using Windows Notepad or most popular word processors.

When you select **Capture Text**, you will be asked to specify the file name where the received information is to be stored. If the file already exists, select it from the list of files. Otherwise, type in the new file name in the **File** edit field. Click on the **OK** button to confirm your selection.

Once **Capture Text** is turned on, a check mark will appear next to the menu choice. Any text that appears on the terminal window will be saved into the capture file. Any information that was on the terminal window prior to selecting **Capture Text** will not be store in the file.

To turn off **Capture Text**, select the option from the menu once more. The check mark will disappear from the menu option.

When using **Capture Text** while the terminal emulation is set to anything other than TTY, text may not appear the same in the file as it did on the terminal window. This is due to cursor positioning in the extended terminal emulators.



Print Documents

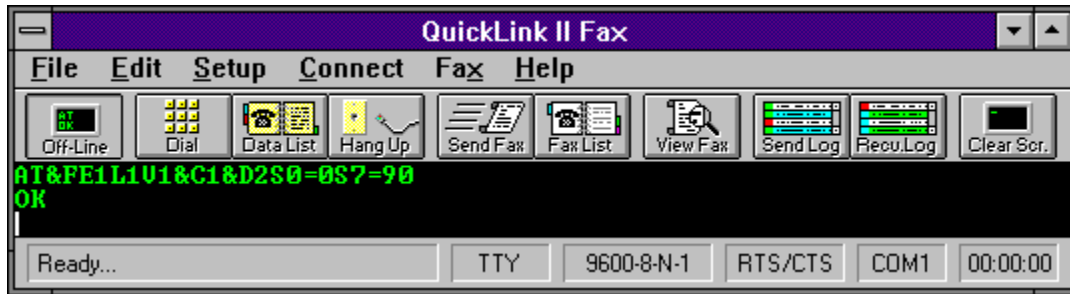


The **Print** option in the **File Menu** allows you to print various QuickLink files such as the send and receive logs, the fax phone list, the data phone list, ASCII text files or fax files.

Select the desired report or file to print by clicking on the item and then click the **Print** button.

Related Topics:

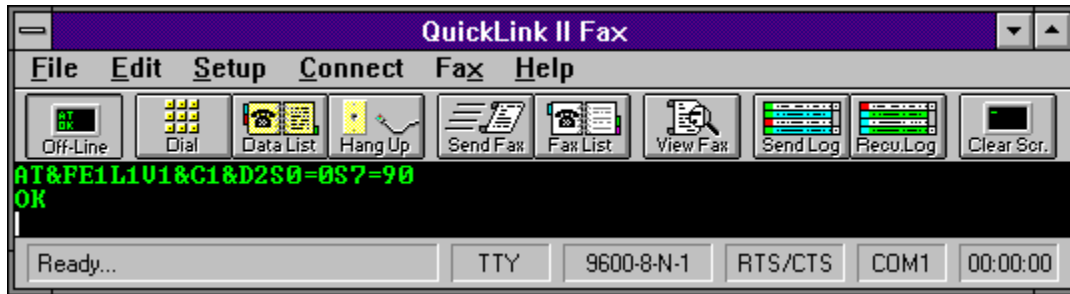
[Log Report Type](#)



Printer Setup



The **Printer Setup** option in the **File Menu** allows you to select the print driver that QuickLink will print to. Select from the list the correct driver that corresponds to your printer.



Exit QuickLink

The **Exit** option in the **File Menu** closes QuickLink and returns to the previous running application. If the modem is on-line at the time of exiting, QuickLink will prompt you to whether you want to disconnect the line. Leaving the modem on-line allows you to switch to another application and continue your communication session

Glossary of Terms

ASCII

AT command

Bit map

Byte

CCITT

Class 1

Class 2

Compression

Cover page

CPU (Central Processing Unit)

CRC (Cyclic Redundancy Check)

Decompression

Default

Dial prefix

Dial suffix

Dialog box

DOS directory

Download

DPI (Dots Per Inch)

Export

Fax (Facsimile)

Fax/Modem

Filename

Home path

Import

Install

Install program

Kilobyte (Kb)

Menu Bar

Megabyte (Mb)

MNP (Microcom Networking Protocol)

Modem

Notepad

OCR (Optical Character Recognition)

Packet

Paste

Phase

Protocol

Pulse dialing

Record

Resolution

RTS/CTS (Request to Send/Clear to Send)

Scan line

T.30

T.4

Tone Dialing

Upload

V.42/V.42bis

XON/XOFF

American Standard Code for Information Interchange. A standardized system for the binary representation of characters. ASCII files can be read by most popular software applications including QuickLink.

A command issued from the computer to the modem.

A collection of bits or dots that make up a fax image.

A unit of information consisting of eight bits, equivalent to one character of information.

The International Telegraph and Telephone Consultative Committee: The international telecommunication standard making body.

A specification of how a fax/modem and fax software should communicate. The Class 1 specification defines that the fax software is responsible for both T.4 and T.30.

A specification of how a fax/modem and fax software should communicate. The Class 2 specification defines that the fax software is responsible for T.4 and the fax/modem is responsible for T.30.

The process of squeezing data into a form that takes up less disk space, but requires unsqueezing before it can be used normally.

The first page of a fax transmission. This page usually contains information about who the fax was sent from and the total number of pages of the transmission.

The main processor in a computer

An error detection method for data transmission. This method provides 99.9984% accuracy.

The process of unsqueezing compressed data so that it can be used normally.

The setting that is shipped with the QuickLink program; this setting can be used in most circumstances.

A series of characters or digits dialed before a phone number.

A series of characters or digits dialed after a phone number.

Boxes that appear on the screen that contain entry fields or to provide you with information.

The name given to an area on your hard disk in which you store files. The DOS directory name is preceded by a backslash symbol (\). For example, "C:\QL2FAXW" represents a DOS directory named "QL2FAXW" located on the C: drive.

The process of receiving a data or program file from a remote computer.

Used to measure resolution.

To create an editable image file (.PCX or .TIF) from a fax file (.QFX or .REC).

The transmission of an image of a document over telephone lines.

A hardware device which has the capabilities of a modem and has the additional capability of transmitting (and/or receiving) faxes to other fax machines or fax/modems.

The name given to a DOS file.

The DOS directory in which the QuickLink program files (.EXE and .DLL) are located.

To create a faxable file (.QFX or .REC) from a non-faxable image file.

To put the QuickLink software onto your computer system.

The program used to install QuickLink. The name of the executable program is INSTALL.EXE.

A unit of measurement consisting of 1,024 bytes.

The list of menus displayed on your screen when you start QuickLink.

A unit of measurement consisting of 1,024 Kilobytes.

A set of classes which defines error correction and data compression which can be used with modem to modem connections. This protocol is an industry de facto standard developed and licensed by Microcom, Inc.

A hardware device which translates digital information from a computer into analog information which can be transmitted over a phone line. It also can take analog information from the phone line and convert it to digital signals.

The text file editor that is run from QuickLink. This file is named NOTEPAD.EXE. This program is shipped with every copy of Windows.

The process by which text in a fax file is recognized and converted to a file which can be understood and edited by a word processor.

A pre-defined number of bytes in a file transfer. A file transfer is a stream of data packets.

To send the text scrap to the modem.

Refers to the 5 different consecutive parts of the T.30 handshake.

Phase A - setting up the call

Phase B - the pre-message procedure and selecting facilities (handshaking)

Phase C - image transmission

Phase D - post-message procedure including end of page confirmation

Phase E - call release

A method of data transmission. Different protocols use different methods to transmit data.

A method of dialing phone numbers using mechanically generated pulses. Rotary telephones use pulse dialing.

An entry in the Data Phone List or the Fax Phone List.

The density of dots on an image or on screen, measured in dots per inch. High resolution faxes are 200 by 200 dots per inch, and normal resolution faxes are 200 by 100 dots per inch.

A type of hardware flow control. The RTS signal indicates to the modem that the computer can accept data. The CTS signal indicates to the computer that the modem can accept data.

A one horizontal line of a fax image. On a high resolution fax there are 2200 scan lines per fax. On a normal resolution fax there are 1100 scan lines per fax.

The CCITT specification which defines the procedures and signals to be used between facsimile equipment. This is often referred to as the fax "handshaking."

The CCITT specification which defines the coding scheme used for image data in a fax transmission. Data compressed in this manner is what is transmitted over phone lines during a fax.

Dialing phone numbers using electronically generated tones. Push-button telephones often use tone dialing. QuickLink defaults to tone dialing.

The process of sending a data or program file to a remote computer.

A standard developed by CCITT which defines error correction and data compression which can be used with modem to modem connections.

A type of software flow control. An XOFF character (ASCII character 19) is sent over the line if the receiver wants to temporarily stop data transmission. An XON character (ASCII character 17) is sent to continue the data transmission.

How To:

These topics show you how to perform commonly used functions of QuickLink:

[How to send a fax from QuickLink](#)

[How to send a fax from within a Windows program](#)

[How to receive a fax.](#)

[How to send a data file.](#)

[How to receive a data file.](#)

How To Send a Fax

This section explains the steps involved in sending a fax to another fax machine or fax modem.

1. Before we can send a fax, we must create something to send. Pull down the **Edit** menu and select **Run Notepad**. Windows Notepad must be installed on your system for this exercise.
2. You may type in anything you wish in the Notepad window. Type in a few lines of text.
3. Pull down the **File** menu and select **Save**.
4. Type *C:\TEST.TXT* in the File Name field and click the OK button.
5. Pull down the **File** menu again and select **Exit**.
6. Pull down the **Fax** menu of QuickLink and select **Send Fax**.
7. In the File Specification field type *C:*.TXT* and press *RETURN*. The Files Available list box will change to reflect the new file specification. You should see the file, TEST.TXT in the list.
8. Locate the file TEST.TXT in the list of files available and double-click on the file name.
9. The Document Type selection box will appear asking you what kind of document it is. Select TEXT and click the OK button. The file will appear in the list of Files Selected.
10. Click on the OK button. The Send Fax Information box will appear.
11. Enter the proper text in the Phone, Name and Attention fields.
12. Click the Send Fax button. QuickLink will then convert the document to fax format and the Fax Manager will appear showing you the status of the transmission.
13. You can monitor the status of the transmission or switch to another application if you wish.

How To Send a Fax From Within a Windows Program

The most convenient way to send out a fax is to do it directly from your Windows programs. The benefits of sending out faxes in this manner are that there is no need to interrupt your work to fax out and that all of your fonts, graphics, and formatting are incorporated; You get true WYSIWYG faxing!

1. Before we can send a fax, we must create something to send. Pull down the **Edit** menu and select **Run Notepad**. Windows Notepad must be installed on your system for this exercise.
2. You may type in anything you wish in the Notepad window. Type in a few lines of text.
3. Pull down the **File** menu located on Notepads menu bar and select **Print Setup**.
4. In the **Print Setup Dialog**, choose the **Quick Link on FAX/MODEM** print driver from the drop down list of print drivers. Select **OK** to close the dialog.
5. Pull down Notepads **File** menu again and select **Print**. This will cause Notepad to print to the QuickLink Fax Driver.
6. The QuickLink Fax Driver will pop up the Send Fax Dialog. Fill in the **Phone** field with a fax number and press **OK**. There will be a small pause while Notepad prints the fax. Next you will see the Fax Manager loaded, if it was not already, and it will begin sending the fax which you just printed.

How To Receive a Fax

This section explains the steps involved in receiving a fax from another fax machine or fax modem.

1. First, lets set up a few options in QuickLink. Pull down the **Setup** menu and select **Receive Fax Setup**.
2. You will see two options, Enable fax receiving at Fax Manager startup and Run Fax Manager maximized. If either of those two items are unchecked, place a check in the box next to them by clicking on the box. Then click on the OK button.
3. Pull down the **Fax** menu and select **Load Fax Manager**. If the Fax Manager is already loaded, the menu option will say **Unload Fax Manager**.
4. The Fax Manager status box will appear in the lower right hand corner of the screen indicating that it is waiting for a call. The Fax Manager is now ready to receive.
5. Have someone send a fax to you. When the fax comes in, the status of the transmission will be displayed in the Fax Manager window as the fax progresses. The fax will be stored in the directory you have specified as the InBox.
6. We can now take a look at the file. Pull down the fax menu and select **View Fax Log**. Then select the **Receive Log**.
7. The fax just received will be the first on in the list. To view the fax simply double-click on the entry. This will launch the Fax Viewer and load in the fax for viewing.
8. Receiving faxes can be done entirely in the background while you are running other applications. Just make sure the Fax Manager is loaded and **Fax Receiving** is enabled and your ready to receive.

How To Send a Data File

This section explains the steps involved in sending a data file to another computer. Sending a data file is also known as uploading.

1. First, a connection must be made between two computers. For this exercise, we'll connect to the Smith Micro Software, Inc. BBS (Bulletin Board System), American Email. Pull down the **Connect** menu and select **Phone List**. Then double-click on the American E-Mail entry.
2. QuickLink will then dial the American E-Mail computer. If the connection is made, you will see a **CONNECT** message appear in the dialer dialog box.
3. If you have connected to American E-Mail before, enter your ID and password. Otherwise type the word *NEW*. If you are a new user, you must enter information about yourself in the sign-up process. Enter all the necessary information when prompted. When sign-up is complete, you will be placed at the main menu.
4. From the main menu, hit the *L* key and press *RETURN* to switch to the Library of Files.
5. Hit the *U* key and press *RETURN* to select the uploading process.
6. Type in a valid DOS file name for the file to upload and press return. This can be any valid file name. If the file already exists on American E-Mail, you must reenter a different name. The name does not need to be the same as the name of the file we will be sending; Pick any random name.
7. Hit the *C* key and press *RETURN* to select the Xmodem CRC transfer protocol.
8. American E-Mail is now ready to receive the file. You must setup QuickLink to send the file now. Pull down the **File** menu and select **Send File**.
9. Select **Xmodem CRC** transfer protocol. Since this is the protocol that was selected on American E-Mail, we must select it here also.
10. We must now select a file to send. For this exercise we'll send one of the QuickLink script files, *EMAIL.SRP*. Type in *EMAIL.SRP* in the File field and click on the OK button. You must be located in the subdirectory where QuickLink is stored in order to access this file. If you are located in another subdirectory, either switch to the QuickLink directory or you must give the full path name of the file.
11. The file will then start to transfer. This is a very small file and should take about 10 or 15 seconds. When the transfer is done, a Transfer Complete dialog box will appear. Click on the OK button.
12. Hit the *N* key and press *RETURN* when asked if you would like to edit the file description.
13. This concludes the operations involved in sending a data file. You are still connected to American E-Mail so you may want to browse around. When you are ready to log off, pull down the **Connect** menu and select **Hangup**.

How To Receive a Data File

This section explains the steps involved in receiving a data file from another computer. Receiving a data file is also known as downloading.

1. First, a connection must be made between two computers. For this exercise, we'll connect to the Smith Micro Software, Inc. BBS, American E-Mail. Pull down the **Connect** menu and select **Phone List**. Then double-click on the American E-Mail entry.
2. QuickLink will then dial the American E-Mail computer. If the connection is made, you will see a **CONNECT** message appear in the dialer dialog box.
3. If you have connected to American E-Mail before, enter your ID and password. Otherwise type the word *NEW*. If you are a new user, you must enter information about yourself in the sign-up process. Enter all the necessary information when prompted. When sign-up is complete, you will be placed at the main menu.
4. From the main menu, hit the *L* key and press *RETURN* to switch to the Library of Files.
6. Press the *D* key and press *RETURN* to activate the downloading procedure.
7. Type *SMSILOGO.QFX* and press *RETURN*.
8. Hit the *C* key and press *RETURN* to select the Xmodem CRC transfer protocol.
9. American E-Mail is now ready to send the file. QuickLink must now be set to receive the file. Pull down the **File** menu and select **Receive File**.
10. Select **Xmodem CRC** as the transfer protocol. Since this is what we selected on American E-Mail, we must select it here also.
11. Now you must enter the name to store the file as on your disk. Enter *WINTTEST.QFX* in the File field and click on the OK button.
12. QuickLink will now start receiving the file. When the transfer is complete, a dialog box will appear stating that the transmission is complete. Click on the OK button.
13. The file is now located on your disk as *WINTTEST.QFX*. This is a sample fax file that may be viewed using the Fax Viewer.
14. This concludes the operations involved in receiving a data file. You are still connected to American E-Mail. You may want to browse around and possibly download another file. When you are ready to log off, pull down the **Connect** menu and select **Hangup**.

Send File
Receive File
Capture Text
Print...
Printer Setup...
Exit

Copy All
Paste To Host
Run Notepad...
Clear Screen
Start/Stop Timer
Reset Timer
Button Bar
Status Bar

Line Settings...
Modem Setup...
Terminal Options...
Connection Setup...
Send Fax Setup...
Receive Fax Setup...
Cover Page Setup...
Services Setup...
Macro Keys...

On-Line...
Dial...
Hangup
Send Break
Phone List...
Run Script...
CompuServe
DowJones
GEnie

[Send Fax...](#)
[Fax Phone List...](#)
[Send Faxes On Hold](#)
[Load/Unload Fax Manager](#)
[Fax Receiving](#)
[Manual Fax Receive](#)
[Convert Documents](#)
[View Fax Document](#)
[View Fax Log](#)
[View Fax Schedule...](#)

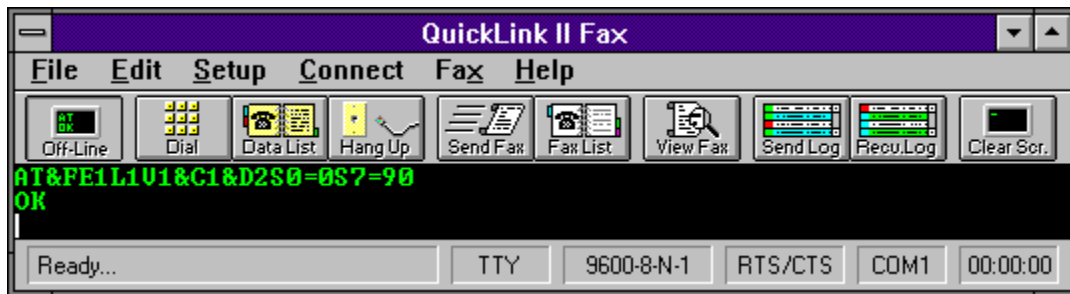


Screen Color Setup



The **Screen Color Setup Dialog** sets colors for the terminal screen.

Colors can be selected for the foreground and background text colors for the normal text of the terminal screen. For text that comes in with the blinking attribute, you may either select foreground and background colors for the blinking text or use the colors that come in but use italics to distinguish the text from normal text. The italics option is suggested. An example of the colors is displayed at the bottom of the dialog.



VT100 Terminal Setup

The **VT Terminal Setup Dialog** sets options for the VT100/102 terminal emulator.

VT100 supports the following options:

New Line Mode

Translates carriage returns to carriage return - line feed pairs. If New Line Mode is enabled, carriage return characters (ASCII 13) received from the remote computer will be translated to carriage return - line feed combinations (ASCII 13, ASCII 10). With this option off, carriage returns will remain intact.

Answer Back Message

The Answer Back Message is used to hold a text message that will be transmitted when the remote computer requests it. Some host computers require you to have a log in ID in the Answer Back Message so that it can log you in automatically when you connect. The text you must enter will vary between systems. You should find out from the host computer what should be placed in this box or if you should place anything into it at all.

Tab Stops

Sets the column positions for each tab character for display on the terminal window. These are tab characters that are sent from the remote computer. The default for tab stops are every eighth column. When entering the tab positions, all numbers must be separated by commas.



Send Fax Dialog



The **Send Fax Dialog** is used to indicate information about when and where a fax is to be sent.

This dialog is the same when you are sending from the QuickLink main application or the [QuickLink Fax Driver](#) from within another application. The only exception is the **Save To File** button which only appears when using the **Fax Driver**.

Note: If your **Window Background** color is set to be the same as your **Disabled Text** color in the control panel some of the **Phone**, **Name**, etc. field entries may appear to disappear when **Manual Send** is checked or **Modify** (and then **OK**) is pressed. They have not disappeared, but are only grayed out. You may change either the **Window Background** or **Disabled Text** colors via the control panel to make those disabled fields visible.

Phone

The phone number to which the fax will be sent.

Name

Sets the name to which the fax is being sent.

Attention

Defines an attention field for the fax.

Prefix

A dialing prefix, if any, that should be used before dialing the actual phone number. This could be a credit card number or a number that is required to get an outside phone line in your company.

Manual Send

A fax can be sent without entering the phone number in the phone field. Manual Send can be invoked by selecting the Manual Send check box or placing the letter M in the first position of the phone field. Instead of dialing a phone number, QuickLink will prompt you to dial the number manually..

Add

Automatically adds a new record to the phone list with the Company, Attention, and Phone fields.

Phone List

Accesses the fax phone list.

Schedule

Sets the date and time at which the fax should be transmitted. The date and time are defaulted to the current date and time so that the fax will be sent immediately.

To change the date or time, click on the number you wish to change and then you may either type in the new number manually or you may use the up and down arrow buttons. For example, if you would like the fax to be sent at 11:00 PM, first click on the hour in the time field and use the arrow buttons to change the number to 11. Then click on the minute and change that number to 00.

Hold For Later

Rather than indicate a specific date and time for the fax to be sent, you may check the **Hold For Later** option which will place the fax on hold. To send the fax at a later time, either reschedule the fax from the [Fax Schedule](#), or choose the [Send Faxes On Hold](#) menu option from the **Fax Menu**.

Cover Page

Enables the sending of a cover page along with the fax. If you would like a cover page sent along with your fax, check this option.

Cover Page Modify

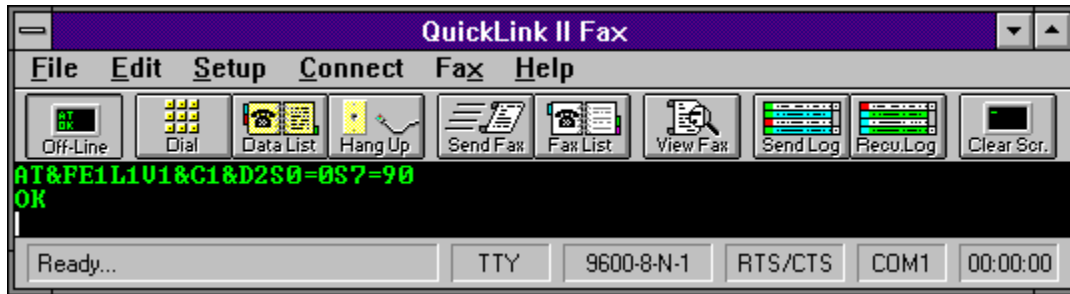
Allows you to modify the fields in the cover page. The cover page fields may be changed to differ from the normal entry fields for Company, Attention and Phone. This allows you to type the Company, Attention and Phone fields. Add them to the phone list. Then go back and modify them for this transmission only.

Save To File (Only when using the QuickLink Fax/Print Driver)

Saves the printed output to a QFX file instead of sending the fax out.

Related Topics:

[Modify Cover Page](#)
[Fax Phone List](#)
[View Fax Schedule](#)
[How To Send A Fax](#)



Modify Cover Page



The **Modify Cover Page Dialog** allows you to modify the fields of the fax cover page for the current send. You can modify the **Name**, **Company**, and **Fax Phone** number fields.

In addition you can add a free-form note. Any text can be typed into the **Note** field. Your message has a maximum length of approximately 900 characters (about 200 words). If a larger note is required, you should create it in an ASCII text file and include it as one of the documents in the fax transmission.



Document Type Selection



The **Document Type Selection Dialog** asks you to select the type of document that QuickLink is to convert.

When QuickLink needs to convert a document to a fax (*.QFX) format, it will ask you for original document format. It will only ask you if it does not recognize the format.

Select the format of the original document, Valid types are ASCII Text, BMP, TIFF, PCX, DCX and MacPaint. If your document is not one these types, it will not convert correctly.

NOTE: Do not confuse word processor documents with ASCII Text files. ASCII Text files do not contain any formatting in them at all. An example of an ASCII Text file would be a file created in Windows Notepad.



Open File

All file open dialogs in QuickLink use the standard Windows common dialogs interface. For a description of these dialogs, refer to your Windows documentation.



Open File

All file open dialogs in QuickLink use the standard Windows common dialogs interface. For a description of these dialogs, refer to your Windows documentation.



InBox Setup



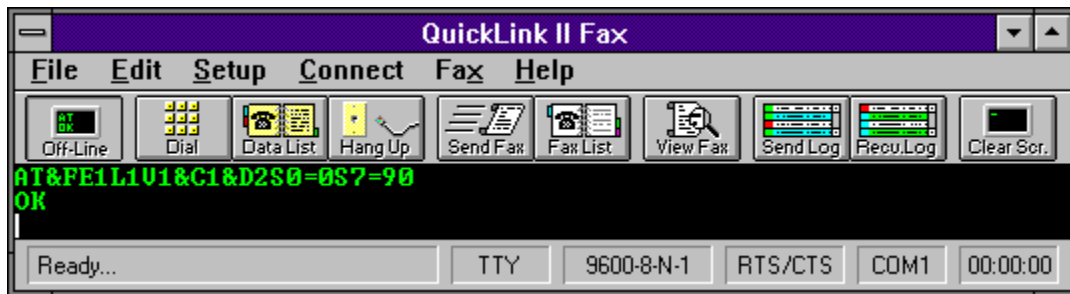
The **InBox Path Setup Dialog** indicates where QuickLink should store received faxes.

QuickLink can store received faxes anywhere on your disk that you like. Only drives and directories will be displayed in the list box. Select the location you would like your received faxes to be located.

NOTE: It is highly recommended that you do not receive faxes to a floppy drive. Faxing is a very timing sensitive operation and due to the slowness of a floppy drive, it could cause serious problems in receiving.

Related Topics:

[QuickLink Outbox](#)



OutBox Setup



The **OutBox Path Setup Dialog** indicates where QuickLink should store outgoing faxes.

QuickLink can store outgoing faxes anywhere on your disk that you like. Only drives and directories will be displayed in the list box. Select the location you would like your outgoing faxes to be located.

NOTE: It is highly recommended that you do not send faxes from a floppy drive. Faxing is a very timing sensitive operation and due to the slowness of a floppy drive, it could cause serious problems in sending.

Related Topics:

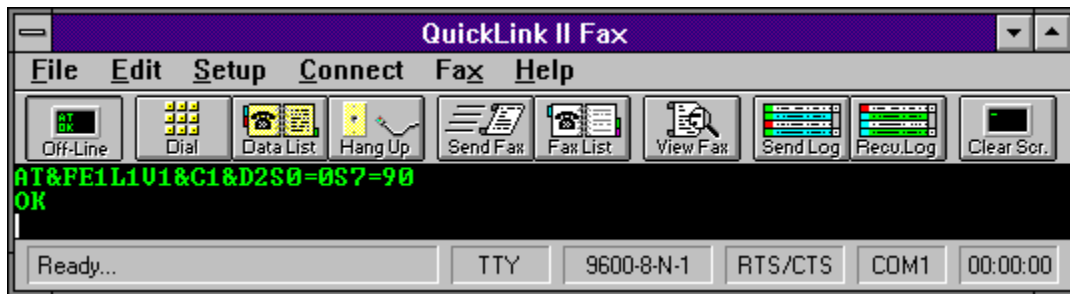
[QuickLink Inbox](#)



Multiple File Selections



All file open dialogs in QuickLink use the standard Windows common dialogs interface. For a description of these dialogs, refer to your Windows documentation.



Add/Edit Phone List Entry

The **Data Phone List - Add/Edit Dialog** adds or edits an entry in the Data Phone List.

Entries in the phone list can be set up to automatically change various settings when dialing such as baud rate and terminal type. A script can even be run automatically.

Enter the name and phone number to dial for this entry. You may set up the baud rate, terminal type, data bits, parity and stop bits for connecting to this computer.

If you would like to automatically run a script when you dial the computer, check the **Script** box and type in the name of the script to run. Scripts are useful for entering passwords and IDs automatically.

Related Topics:

[Modem Line Settings](#)

[Terminal Options](#)

[Run Script](#)

[Script Language Reference](#)



Add/Edit Fax Phone List Entry

The **Fax Phone List - Add/Edit Dialog** adds or edits an entry in the Fax Phone List.

Four fields can be entered for each record in the fax phone list:

Name	Name of recipient. Limited to 40 characters
Company	Name of recipients company. Limited to 40 characters
Fax Phone #	Fax phone number. Limited to 40 characters
Group	Fax group for the phone list entry. Limited to 1 character



Auto Detect Modem



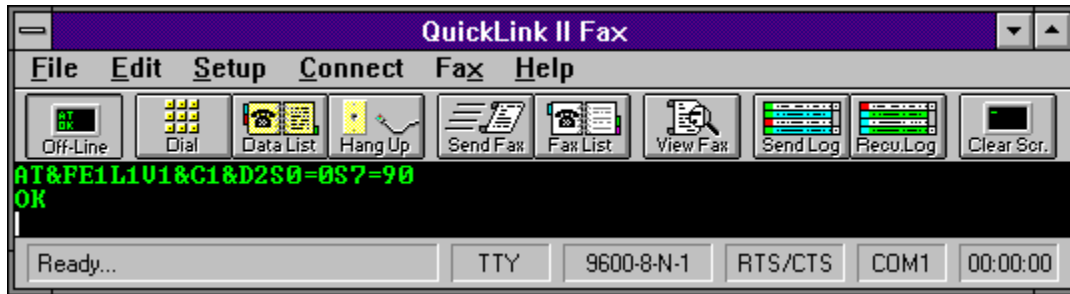
The **Auto Detect Modem Dialog** allows you to manually select the COM port to use or will poll each COM port in search of a modem.

You can manually select the desired COM port to use with your modem or you can let QuickLink automatically check each COM port for an available modem

To let QuickLink find the modem for you, select the Auto Sense button and click OK. Otherwise, click on the desired COM port and click OK.

Related Topics:

[Select Available Modem](#)



Select Available Modem



The **Select Modem Dialog** allows you to select the COM port to use if QuickLink has found more than one modem on your system.

Select the desired COM port to use.

Related Topics:

[Auto Detect Modem](#)



Select Page Range



The **Print Dialog** allows you to select the page range and number of copies to print.

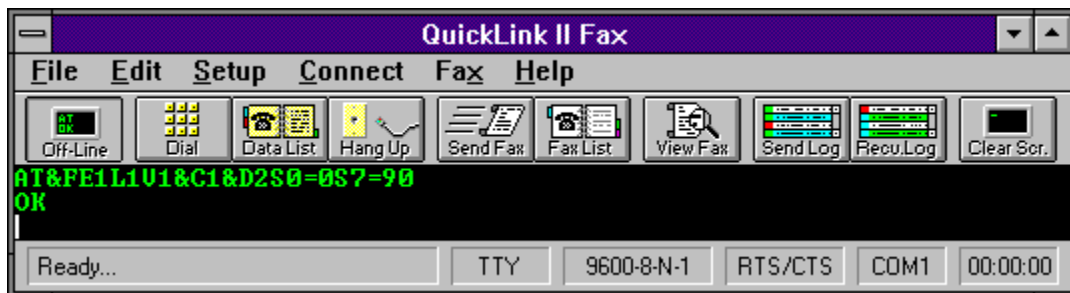
When printing text or fax files from QuickLink, you may specify the number of copies to print and the page range for printing.

Enter the number of copies to print.

Select the page range of the document to print. If you would like to select a specific page range, click on the **Pages** radio button and then enter the **From** and **To** pages.



Log Report Type

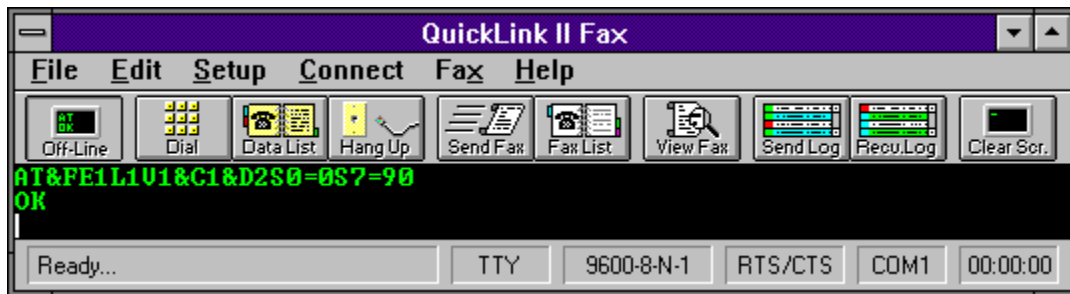


The **Print Fax Log Dialog** allows you to select the type of log report to be printed.

When printing the send or receive fax logs, either a summary or a complete report may be generated. Select the type of report to print by clicking on the desired item and then click the **Print** button.

The complete report includes all information found in the log.

The summary report includes the fax name, the document sent, the status of the transmission, the duration and the date and time. The summary report of the send log also includes the total duration of all the calls. This is very useful for estimating phone charges.



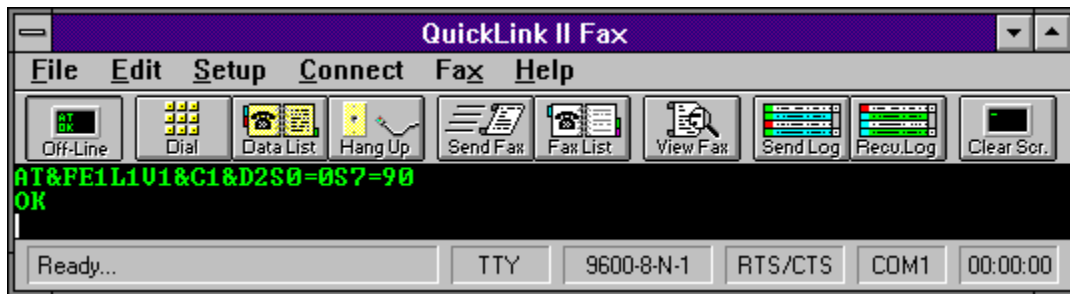
User Registration

The **User Registration Dialog** is used to automatically register your modem with the modem manufacturer.

Begin by filling in all the registration information. Certain versions of QuickLink will have a **More** button which will pop up other dialogs with additional registration questions.

Pressing **Register Now** after filling in the user registration information will call up the manufacturer of your modem and automatically register your modem with the company. Pressing **Save For Later** will allow you to save the information you have entered and let you continue at a later time.

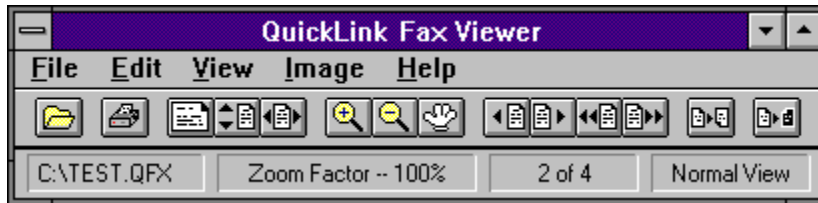
The **Terminal Window** is where communication with your modem takes place. Characters coming from the modem are displayed here, as well as characters which are sent to the modem by typing at your keyboard.



QuickLink Fax Driver

The **QuickLink Fax Driver** is used to print a fax from within an application other than QuickLink. By printing to the **QuickLink Fax Driver**, the document is converted into a fax file and the Send Fax Dialog is activated allowing you to indicate where and when the fax is to be sent. When the application is done printing, the Fax Manager is started, and you will see the fax being sent.

Please see [How to send a fax from within a Windows program](#) for more detailed help.



QuickLink Fax Viewer

The QuickLink Fax Viewer is used to view a fax. It allows you to view the fax in a number of sizes and positions. Use the menu to manipulate the fax for viewing. The Button Bar also provides easy access to all the features of the QuickLink Fax Viewer. Buttons that are dimmed are not available for use at that time. The Status Bar displays information about the fax currently being viewed.

Click on an area of the picture above to receive help about that portion of the QuickLink Fax Viewer.

Open...

Print...

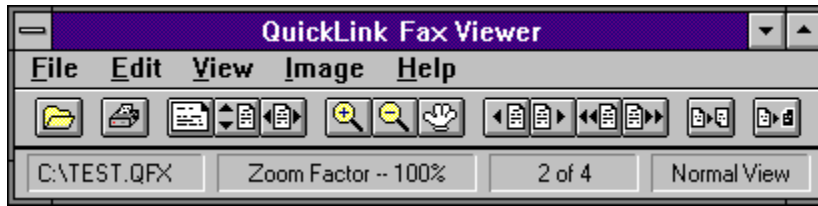
Printer Setup...

Exit


Button Bar

[Normal View](#)
[Fit Vertical](#)
[Fix Horizontal](#)
[Zoom In](#)
[Zoom Out](#)
[Grabber](#)
[Next Page](#)
[Last Page](#)
[Previous Page](#)
[First Page](#)

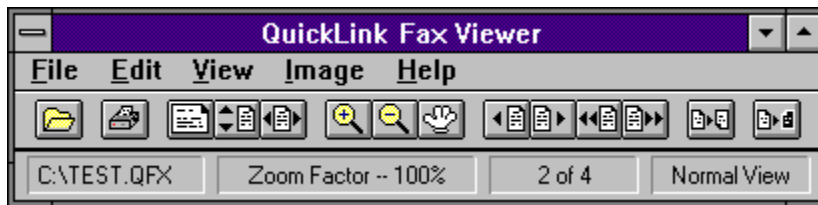
Flip Page
Inverse Page



Open Fax File

 Opens a fax file for viewing. The QuickLink Fax Viewer uses the standard Windows Open File Dialog.

Only QuickLink fax files (*.QFX, *.REC) can be viewed in the QuickLink Fax Viewer.



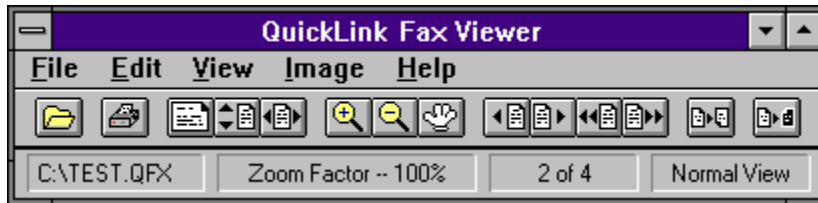
Print Fax File



Prints the fax file being viewed.

Related Topics:

[Printer Setup](#)

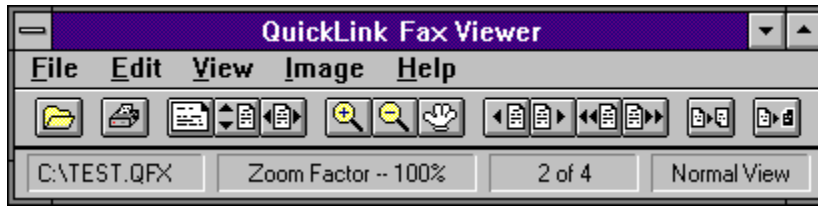


Printer Setup

Allows you to select the print driver that QuickLink will print to. Select the correct driver from the list that corresponds to your printer.

Related Topics:

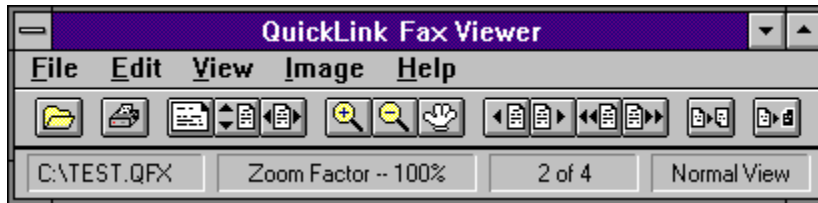
[Print Fax File](#)



Exit Viewer

Exit the QuickLink Fax Viewer and return to the previously running task.

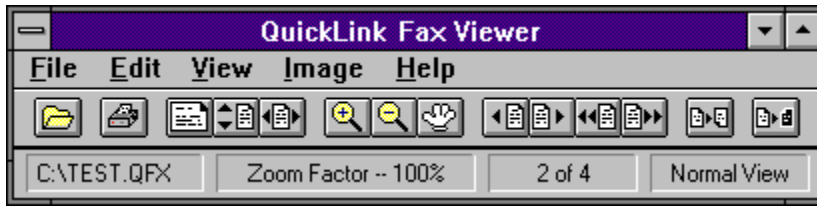
If the QuickLink Fax Viewer was invoked from within the main QuickLink application, you will return to that application after exiting. Otherwise, you will be returned to the previously running task.



Show/Hide Button Bar

Shows or hides the Button Bar.

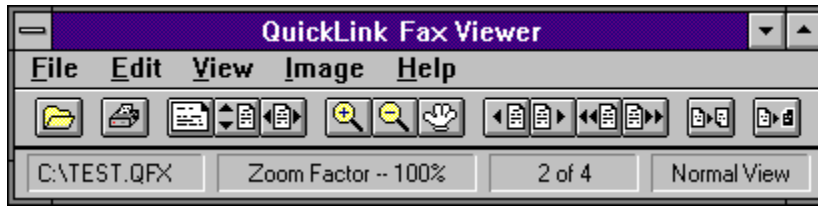
Select the Button Bar option from the edit menu to show the Button Bar. A check mark will be placed next to the menu option indicating that it is active. To turn off the Button Bar, select the option from the menu once more.



Fit Fax Vertically



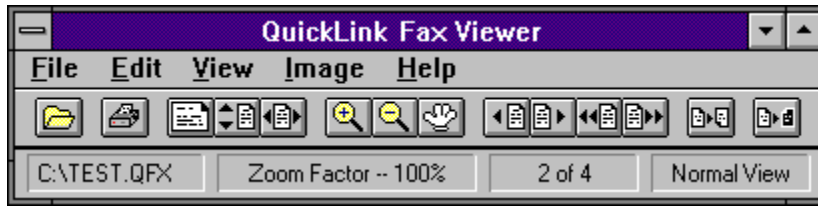
Displays the currently viewed fax page so that the entire height of the page can be viewed.



Fit Fax Horizontally



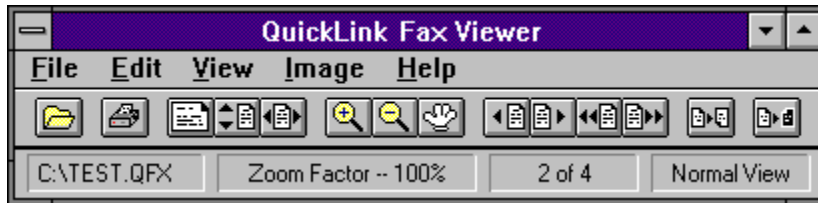
Displays the currently viewed fax page so that the entire width of the page can be viewed.




Normal Fax View



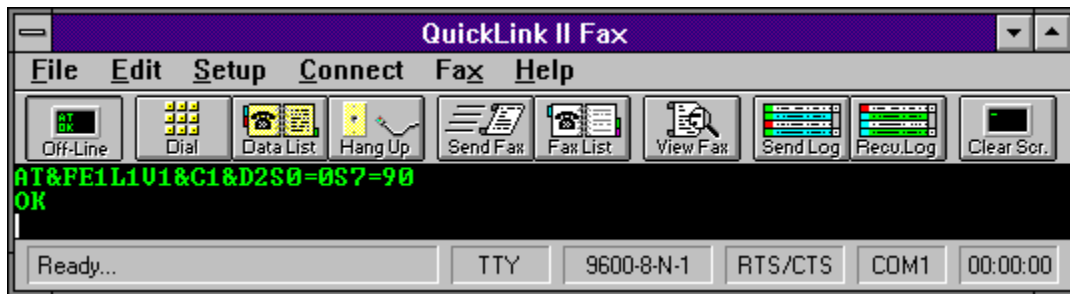
Displays the currently viewed fax page in normal size.



Zoom In

 Zooms in on an area of the fax page.

When Zoom In mode is in effect, the cursor will change to a magnifying glass allowing you to select the area to be enlarged. Place the cursor on the area you wish to magnify and click the left mouse button.



Zoom Out



Zooms out on an area of the fax page.

When Zoom Out mode is in effect, the cursor will change to a magnifying glass allowing you to select the area to be zoomed out. Place the cursor on the area you wish to zoom out and click the left mouse button.



Grabber



Allows the fax to be moved within the viewer window.

When grabber mode is in effect, the cursor will change to a hand allowing you to select the area of the fax to be moved. Place the hand on the area, click and hold the left mouse button and drag the fax to the new position. Then release the mouse button.



View Next Page



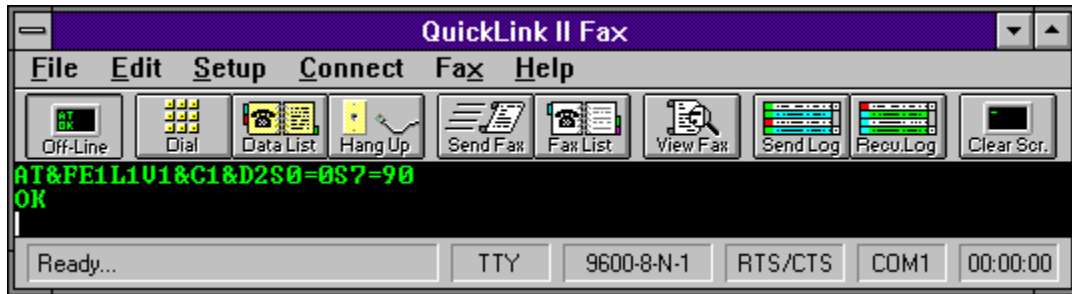
Displays the next page of the fax.



View Previous Page



Displays the previous page of the fax.



View First Page



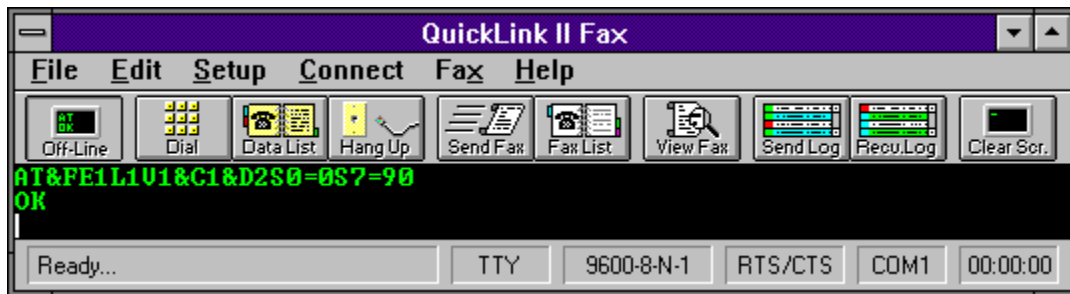
Displays the first page of the fax transmission.



View Last Page



Displays the last page of the fax transmission.



Flip Fax Horizontally



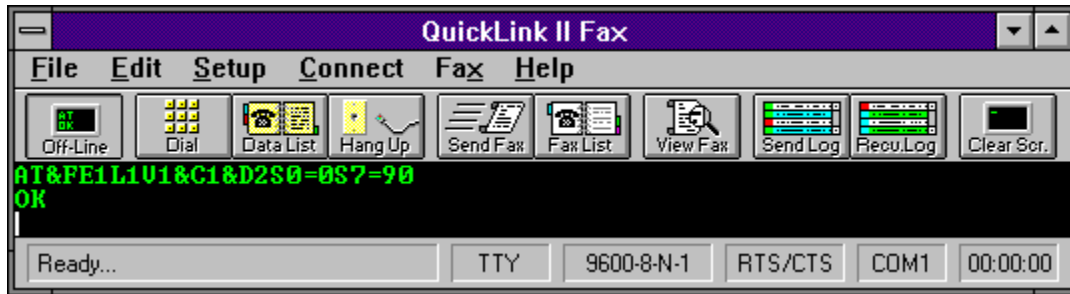
Flips the fax page horizontally.



Invert Page



Inverts the fax page so that the foreground color becomes the background color and the background color becomes the foreground color.



Viewer Status Bar

Displays information pertaining to the viewed fax.

The Viewer Status Bar displays important information about the fax being viewed. From left to right, the items displayed are: the fax file being viewed; the current zoom factor; the page being viewed and the total pages in the document; the current view mode.

ASCII File Transfer Protocol

The ASCII file transfer protocol is for sending basic DOS text files. DOS text files do not have any formatting within them as with a word processor. For example, documents created in Windows Notepad are ASCII text files. Documents created in Windows Write are not ASCII text files.

The ASCII transfer provides for no error correction. If line noise distorts the data, it will not match the file as it was sent. In many cases, the distortion will be obvious and may be edited using any ASCII text editor.

Related Topics:

[How to send a file](#)

[How to receive a file](#)

Kermit File Transfer Protocol

The Kermit transfer protocol was primarily designed for data transfers to and from mainframe style computers. Kermit is a batch transfer protocol that allows multiple files to be sent at the same time. The Kermit protocol sends data in very small packet sizes which will decrease transfer speed.

Related Topics:

[How to send a file](#)

[How to receive a file](#)

Super Kermit File Transfer Protocol

Super Kermit is a useful protocol for transferring and receiving data over data networks such as Telenet and Tymnet. These networks have long communication delays that significantly degrade the performance of file transfers. Multiple packets of information are sent at one time which help overcome the delays on the data networks.

Super Kermit also has a simple data compression ability that increases transfer performance.

Related Topics:

[How to send a file](#)

[How to receive a file](#)

Xmodem File Transfer Protocol

The Xmodem transfer protocol, also known as Xmodem Checksum, is one of three Xmodem type transfer protocols. In all of the Xmodem type protocols, data must be sent using the line settings, 8 data bits, 1 stop bit and no parity. If the line settings are set to anything other than this, they will automatically be changed during the transfer.

Xmodem sends data in a smaller packet size (128 bytes) and uses a checksum method of error correction. The checksum method compares two computations, one calculated by the sending computer before a packet is sent and one calculated by the receiving computer after the packet is sent. If these numbers match, the data was assumed to be transferred correctly. This method provides for a high degree of error correction, but it is not impossible for an error to go undetected.

Related Topics:

[Xmodem-1K File Transfer Protocol](#)

[Xmodem-CRC File Transfer Protocol](#)

[How to send a file](#)

[How to receive a file](#)

Xmodem-1K File Transfer Protocol

Xmodem 1K is very similar to Xmodem Checksum with the exception that it send packets of data 1K (1024 bytes) at a time. Provided that no errors are detected, Xmodem 1K will send the data in 1K packets for as long as possible. The increase in packet size, boosts performance over the standard Xmodem Checksum.

Xmodem 1K is, in essence , the same protocol as Ymodem. Ymodem, however, has the ability to send multiple files at one time where Xmodem 1K can send only one at a time.

When sending data using the Xmodem 1K protocol, if the receiving computer does not support this protocol, QuickLink will fall back to the Xmodem CRC protocol, which in turn will fall back to the Xmodem Checksum protocol if the receiving computer does not support the Xmodem CRC method either.

Related Topics:

[Xmodem-File Transfer Protocol](#)

[Xmodem-CRC File Transfer Protocol](#)

[Ymodem-File Transfer Protocol](#)

[How to send a file](#)

[How to receive a file](#)

Xmodem-CRC File Transfer Protocol

Xmodem CRC is the best error correcting protocols of the Xmodems. It replaces the Checksum error correcting method with a CRC (Cyclic Redundancy Check). This change provides a 99.9984% assurance of detecting any transmission errors. With the checksum method, it is possible for 1 out of 256 bad data packets to go undetected. With the CRC method, the possibility for a bad packet to go undetected drops to 1 in 700 billion.

When sending data using the Xmodem CRC protocol, if the receiving computer does not support this protocol, QuickLink will fall back to the Xmodem Checksum protocol.

Related Topics:

[Xmodem-File Transfer Protocol](#)

[Xmodem-1K File Transfer Protocol](#)

[How to send a file](#)

[How to receive a file](#)

Ymodem File Transfer Protocol

Ymodem transfer protocol is very similar to the Xmodem 1K protocol in that it sends 1k (1024 bytes) of data in each data packet. Ymodem, however, can send multiple files at one time. This is also known as a batch transfer.

Some programs, such as older versions of Procomm, incorrectly call Xmodem 1K, Ymodem. Others call Ymodem, Ymodem Batch. When sending data to a computer using Procomm, you will need to select 1K Xmodem while the user of Procomm application selects Ymodem.

Related Topics:

[Ymodem-G File Transfer Protocol](#)

[Xmodem-1K File Transfer Protocol](#)

[How to send a file](#)

[How to receive a file](#)

Ymodem-G File Transfer Protocol

Ymodem-G is a multiple file transfer protocol. Ymodem-G was designed for modems that have error correction built in such as modems that include MNP (Microcom Networking Protocol). Ymodem-G does not have any error correction during the transmission. If you do not have an error correcting modem, you do not want to use Ymodem-G.

Multiple files may be sent or received at one time with Ymodem-G. Along with the data that is sent during the transmission, Ymodem-G sends information regarding the filename, file attributes and creation date of the files.

Related Topics:

[Ymodem-File Transfer Protocol](#)

[How to send a file](#)

[How to receive a file](#)

Zmodem File Transfer Protocol

Zmodem transfer protocol sends variable size data blocks, depending on line condition. Zmodem can send and receive multiple files at one time. It also allows automatic file reception and sends file names, sizes, and creation dates. Both 16- and 32-bit error checking are available. Interrupted data transmissions can be resumed from the point at which they were interrupted.

Zmodem is a relatively new protocol and there are variations in its implementation by different software vendors. If you have problems with Zmodem, try Ymodem or Xmodem.

Related Topics:

[How to send a file](#)

[How to receive a file](#)

CompuServe B/B+ File Transfer Protocol

The CompuServe B/B+ transfer protocol allows for automatic batch file transfers between your local computer and CompuServe.

Related Topics:

[How to send a file](#)

[How to receive a file](#)



QuickLink Index

To find out more about a particular portion of QuickLink, click the left mouse button on the picture above or one of the topics below.

Introduction

[Getting Started...](#)

[How To...](#)

Appendices

[Glossary of Terms](#)

[Troubleshooting](#)

[Error Codes](#)

[Script Language Reference](#)

[ASCII Chart](#)

Getting Started

QuickLink is a fax and data communications package all in one. Faxes can be sent and received entirely in the background from within the main QuickLink application or any other Windows application.

If you are unfamiliar with the Windows environment, please refer to the Getting Started section of the WINHELP.HLP help file.

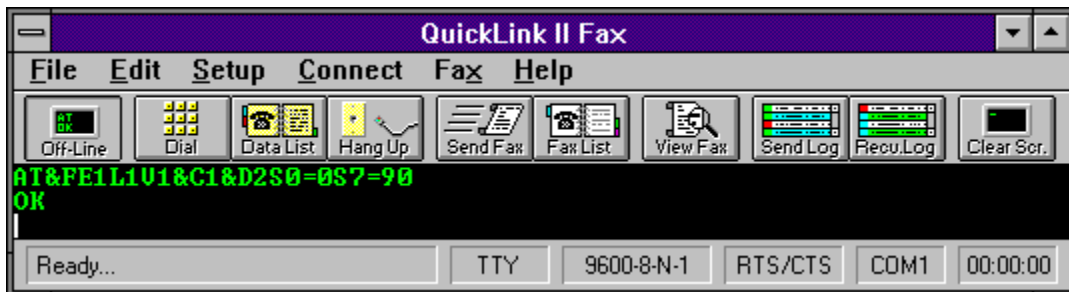
QuickLink consists of three applications. The main QuickLink application, the Fax Manager and the Fax Viewer. The Fax Manager is responsible for all fax transmissions. Faxes can be viewed or printed using the Fax Viewer. During installation of QuickLink, a group will be created in the Program Manager. Below are the three icons that are placed in the QuickLink group and what they are.



Main QuickLink application.



Fax Viewer.



Fax Manager.

The Fax Manager has four basic idle states. Waiting for an incoming call, scheduled faxes waiting to go out, waiting for an incoming call and faxes scheduled to go out, or just simply idle. When the Fax Manager is loaded and iconized, it will appear on your desktop with the following icons:



Idle



Faxes scheduled to be sent.



Ready to receive a call.



Faxes schedule to be sent and also ready to receive a call.



The Fax Manager contains a feature called ModemMonitor. The ModemMonitor is a panel of status lights simulating the status lights of an external modem. The ModemMonitor and the percentage bar of the Fax Manager occupy the same space. You can toggle between these two options by clicking the left mouse button on the percentage bar or ModemMonitor.

Script Language Reference

Below is a list of the commands in the QuickLink Script Language.

Baud Statement:

This statement allows you to specify the baud rate to be used when the script file is executed.

Format: **Baud "rate"**

"Rate" can be set to 110, 150, 300, 600, 1200, 2400, 4800, 9600, 19200, 38400, 57600, or 115200.

Clearstring Statement:

This command will clear the contents of the special variable called InString. This variable is created by the use of the second form of the In Statement defined below.

Format: **Clearstring**

CLS Statement:

This command will clear the Terminal Window and has the same effect as selecting Clear Screen on the Edit Menu.

Format: **CLS**

The CLS statement will not impact the contents of the Line Buffer.

Data Statement:

This statement is used to specify the number of data bits, either 4, 5, 6, 7 or 8 to be used during the execution of the script.

Format: **Data "#"**

Where # is either 4, 5, 6, 7 or 8.

Dial Statement:

This command will instruct QuickLink to dial a specified telephone number.

Format: **Dial "xxx-xxxx"**

Where xxx-xxxx is the telephone number to be dialed. QuickLink will use the dialing prefix defined on the Modem Setup Dialog Box. You must have an AT command set compatible modem and have English Responses set on to use this statement.

Example: **Dial "1-714-362-5822"**

The example above would instruct QuickLink to dial the Smith Micro Software support BBS.

Echo Statement:

This command will cause a literal string that follows the command to be displayed in the local

Terminal Window.

Format: Echo "xxxxxx"

Where xxxxxx is a literal string to be echoed to the Terminal Window. The string must be enclosed by double quotes.

Example: Echo "This is a sample string"

The string, *This is a sample string*, will be displayed in the local Terminal Window.

End Statement:

This command is used to mark the logical end of a set of script commands.

Format: End

Execution of the script instructions is halted upon encountering an END command.

Goto Statement:

This command will transfer the execution to a specified procedure name.

Format: Goto Procedure:

Where *Procedure:* is the name of a procedure defined in the script file. The procedure name must end with a colon. The following script code shows the use of the GOTO statement.

Example Start:
Echo "This is an example"
Goto Step2:
Step1:
End
Step2:
Goto Step1:

If you follow the execution of the script above, the last procedure executed is Step1: that terminates the script with the END Statement.

If Statement:

The If Statement allows you to test the contents of a special variable called InString. InString is created by using the second form of the In Statement defined below.

Format: If InString = "xxxxxxx" Goto Procedure:

Where xxxxxx is a literal string not longer than 40 characters. If InString equals the specified literal string then execution is transferred to the procedure specified in the Goto.

Example: If InString = "Password" Goto Step2:

In Statement:

There are two forms of the In Statement. The first form of the statement will cause QuickLink to wait "n" seconds for string of characters to be received from a remote computer.

Format: **In "xxxxxx" n**

Where xxxxxx is a string for which you want QuickLink to wait. QuickLink will wait up to "n" seconds for a message to be received from a remote computer. If after waiting "n" seconds, the string is not received, the remainder of the commands in the script file will be bypassed.

Example: **In "Password?" 30**

QuickLink will wait 30 seconds for the string, *Password?*, to be received from the remote computer before continuing with the execution of the script.

The second form of the In Statement allows you the capability to receive one character at a time from your modem. Each character will be added to a special buffer called InString.

Format: **In InString**

InString may contain up to 40 characters of input and will generate an error if more than 40 characters are received. InString may be used in an If statement for testing and controlling the flow of the script execution.

Out Statement:

This command will cause a string to be transmitted to a remote computer.

Format: **Out "xxxxxx"**

Where, xxxxxx is a string to be transmitted to a remote computer.

Example: **Out "DEMOPASS\r"**

QuickLink will transmit the string, *DEMOPASS*, to the remote computer followed by a Return character (\r).

Pause Statement:

This statement will cause the execution of a script file to be temporarily halted until the user presses a key on the keyboard.

Format: **Pause**

A message will be displayed in the terminal window, instructing the user to Press a Key to Continue.

Parity Statement:

This statement is used to specify the parity to be used during the execution of the script.

Format: **Parity "x"**

Where, x is "N" for none, "O" for odd, "E" for even, "M" for mark, and "S" for space parity.

RtsCts Statement:

This statement is used to specify whether the RTS/CTS hardware flow control is to be used when executing this script.

Format: RtsCts "xx"

Where xx is "ON" for on or "OFF" for off.

Stop Statement:

This statement is used to specify the number of stop bits, either 1, 1.5 or 2 to be used during the execution of the script.

Format: Stop "#"

Where # is either 1, 1.5 or 2.

Until Statement:

This command will cause QuickLink to wait until a specified time before continuing with the execution of the script.

Format: Until "hh:mm"

The time must be specified in the form of 24 hour military time.

Wait Statement:

This command will cause QuickLink to delay for 'n' seconds before proceeding with the next script command.

Format: Wait n

Where 'n' is the number of seconds you want QuickLink to wait before proceeding to the next script command.

Example: Wait 15

QuickLink will wait 15 seconds before executing the next step in the script file.

XonXoff Statement:

This statement is used to specify whether the Xon/Xoff flow control is to be used when executing this script.

Format: XonXoff "xx"

Where xx is "ON" for on or "OFF" for off.

In addition to the above script commands, the QuickLink script language includes a number of predefined variables that may be used in writing a script. Many of these variables are used by QuickLink to provide automatic connection to CompuServe, Dow Jones and GENie. The following list of variables are included in the script language:

Variable	Meaning
Compunet	Telephone number for CompuServe's own network
Telenet	Telephone number for Telenet
Tymnet	Telephone number for Tymnet
Cacct	CompuServe account number

Cpass
Dpass
Guser
Gpass

CompuServe password
Dow Jones password
GEnie user number
Genie password



Configure Line Settings

The **Line Settings** option in the **Setup Menu** sets up communication port line settings.

Baud Rate

Set the correct baud rate for your modem. Any baud rate from 110 to 115200 may be selected, provided the rate is supported by the modem.

Data Bits

Set the correct data bits required for the communications session. Connections to personal computers will normally use 8 data bits. Connections to larger mainframe style computers will normally use 7 data bits. Data bits may be set from 4 to 8.

Parity

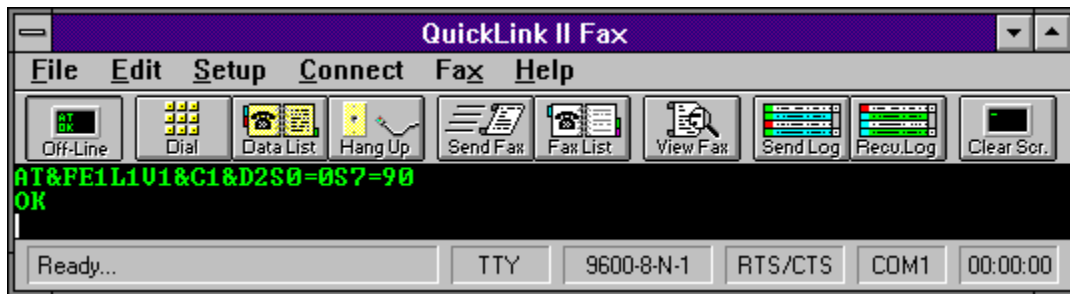
Set the correct parity required for the communications session. Connections to personal computers will normally use no parity. Connections to larger style mainframe computers will normally use even parity.

Stop Bits

Set the stop bits required for the communication session. The most common stop bit setting is 1.

Flow Control

Flow control is the method of regulating data as it is sent over the modem. RTS/CTS is the more common of the controls. RTS/CTS should only be used with high speed data modems that have flow control built into the modem. XonXoff flow control is an older method of flow control that is not in use much today.



Distinctive Ring Settings

If your modem has distinctive ring capabilities, QuickLink may be able to take advantage of them. If so, the Distinctive Ring dialog allows you to determine what action QuickLink will take for each ring type. The choices for each ring type include:

Ignore Ring	Never answer
Fax Only	Answer but only respond to fax calls
Data Only	Answer but only respond to data calls
Fax & Data	Answer and respond to both fax and data calls

Unless you select Ignore Ring, the call will always be picked up for that ring type, and a detection tone will be emitted to the caller.



Configure Terminal Settings

The **Terminal Options** option in the **Setup Menu** allows you to setup how QuickLink displays itself and its terminal window.

Local Echo

Local echo enables QuickLink to echo characters to your terminal window. If characters that you type do not appear on your screen, enable local echo.

CR->CR/LF (Inbound)/(Outbound)

Translates carriage return characters (ASCII 13) to a carriage return-line feed (ASCII 10) combination.

Line Wrap

Wraps lines in the terminal window. Characters will wrap to the current width of the window.

Destructive Backspace

Erases characters when the backspace key is pressed. If **Line Wrap** is off, the cursor will be moved to the previous character but it will not be erased.

Show Button Bar

Enables the button bar at the top of the terminal window.

Show Status Bar

Enables the status bar at the bottom of the terminal window.

On-Line At Startup

Instructs QuickLink to open the terminal window when the program is started.

Off-Line At Hangup

Instructs QuickLink to close the terminal window when a data connection is terminated. This will only occur if the connection is terminated by selecting Hangup from the Connect menu.

Re-Dial On Busy

Enables re-dialing when a busy signal is detected by the modem.

Auto Baud

Allows QuickLink to automatically adjust to the baud rate of the called modem.

Terminal Emulator

Allows QuickLink to act like various terminal types. Available terminal emulators are TTY, VT100, ANSI, VT52 and VT102. TTY and ANSI are two of the more common types for connecting to personal computers. VT100 is more common with larger mainframe style computers like CompuServe.

Related Topics:

[Colors](#)
[VT100](#)



Configure Send Fax Settings

The **Send Fax Setup** option in the **Setup Menu** allows various options to be set for sending faxes.

Center Text/Graphics On Page

Centers text or graphics information horizontally on the page.

High Resolution

Allows documents to be sent at high resolution. High resolution is 200 x 200 dots per inch. Normal resolution is 200 x 100 dots per inch. Documents should be converted and sent at the same resolution. Otherwise, unpredictable results could occur.

Full Page Text/Graphics

Forces a full fax page to be sent no matter how much information is on the page. For example, if the document only has one line of text, a full 8½ x 11 sheet of paper will be sent.

Page Layout

Various aspects of the page may be adjusted including page width and height, margins and the width of tab stops with the Page Layout options.

Include Cover Page

Sends a cover page along with the document to be faxed.

Dedicate CPU During Send

Dedicates the entire CPU during the process of sending a fax. If dedicate CPU is enabled, other programs running will be suspended until the fax transmission is complete. If problems occur with your modem hanging up at undesirable times, enable Dedicate CPU.

Delete Fax Files After Send

Deletes converted fax files after they have been sent.

Remove Fax Manager After Send

Removes the Fax Manager program from memory after the fax transmission.

Run Fax Manager Maximized

Enables the Fax Manager to be initially loaded in its full windowed state.

RTS/CTS Flow Control On Fax Send

Uses RTS/CTS hardware flow control during a fax send instead of XON/XOFF software flow control.

Re-Dial Attempts

Specifies the number of times QuickLink should re-dial a number after a busy signal has been detected.

Re-Dial Delay

Specifies the amount of time QuickLink should wait before re-dialing a phone number.

Max Fax Baud

Specifies the maximum baud rate that QuickLink may use while sending a fax.

Related Topics:

[QuickLink Outbox](#)



Configure Receive Fax Settings

The **Receive Fax Setup** option in the **Setup Menu** configures various options used during the receipt of faxes.

Fax ID String

Specifies the text ID to be sent to the sending fax machine. This text is only to let the sending machine know who it is sending to. The Fax ID String does not have to be entered for proper operation.

Load Fax Manager At Windows Startup

Enables the loading of Fax Manager automatically when Windows is started.

Enable Fax Receiving At Fax Manager Startup

Enables faxes to be received as soon as the Fax Manager is loaded.

Run Fax Manager Maximized

Runs the Fax Manager program in its full windowed state instead of as an icon.

Beep On Receive

Alerts you with a beep when a fax has been received.

Display Message Box On Receive

Alerts you with a message box when a fax has been received.

Dedicate CPU On Receive

Dedicates the entire CPU to the Fax Manager during the receipt of a fax. When Dedicate CPU is enabled, all other programs running will be suspended until the fax transmission is complete. If problems occur with the fax modem hanging up at undesirable times, enable Dedicate CPU.

Spawn QuickLink On Data Call

Launches QuickLink automatically when a data call has been detected. This option is only available if the Fax Manager is loaded into memory.

Print On Receive

Enables QuickLink to automatically print incoming faxes on your printer. Use the Select button to select which printer to print to if more than one printer is configured.

Related Topics:

[QuickLink Inbox](#)



Configure Cover Page Settings

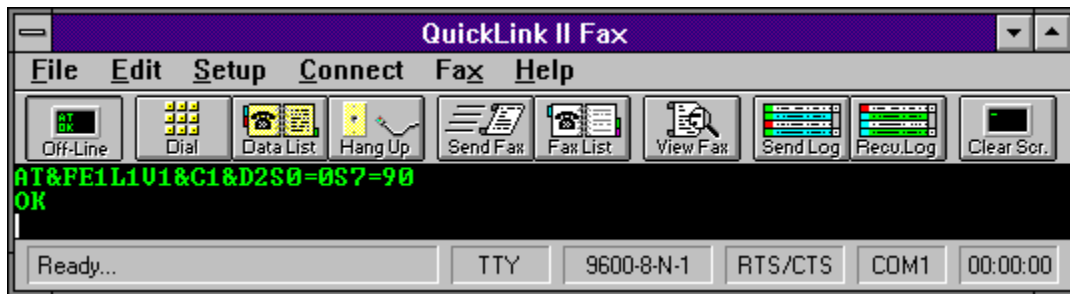
The **Cover Page Setup** option in the **Setup Menu** allows you to define options for the fax cover page.

Enter text into the appropriate fields for Company Name, Fax From, Fax Number and Voice Number. Any or all fields may be blank.

A cover page graphic may be selected which will be placed at the top of the cover page. Graphics must be in a format that is convertible by QuickLink. Valid file types are TEXT, BMP, TIFF, PCX, DCX and MacPaint.

To select the graphic file, type in the full DOS path and file name in the **Cover Page Graphic** field or you may select it from available files on your disk by clicking on the **Browse** button.

To un-select a cover page graphic, erase the file name in the **Cover Page Graphic** field.



Configure On-Line Services Settings

The **Services Setup** option in the **Setup Menu** sets up account and phone number information for quick access to Compuserve, Genie and Dow Jones on-line services.

Account information may be entered for automatic logging into Compuserve, Genie, or Dow Jones. Enter the appropriate data in the ID or Account and Password fields.

Select which network service you will be using, Telenet, Tymnet or Compunet. You can find out the appropriate network by contacting the service.

Enter the telephone number for the service in one of the network phone number fields. Be sure to enter the number in the corresponding field with the network service.

Related Topics:

[Accessing Compuserve](#)

[Accessing Genie](#)

[Accessing Dow Jones](#)



Configure Macro Keys

The **Macro Keys** option in the **Setup Menu** sets up single key launching of scripts or the output of literal text.

Twelve hot keys (F1 to F12) may be set up to automatically run QuickLink scripts or output literal text to the terminal window.

To output a literal string when a function key is pressed, enter the text in the corresponding edit field. If a carriage return is required after the text is output, it can be simulated by entering "\r" after the text in the edit field.

Characters that do not appear on your keyboard may also be output as long as the character is part of the standard ASCII character set. For example, if you needed to output an ESCAPE character (ASCII 27) you would enter a backslash "\", followed by the ASCII value 27. It would be entered in the form of "\27". Do not enter any leading zeros in the ASCII value.

To launch a script when a function key is pressed, enter the file name of the script in the corresponding edit field. Click on the script box next to the edit field to enable the script launching. If text has not been entered in the edit field when the script box is checked, a dialog will pop up allowing you to select the script name from the available files on your disk.

Related Topics:

[Running Scripts](#)

[Script Language Reference](#)

[ASCII Chart](#)



Configure Connection Settings

NOTE: This menu item will only be available if your modem supports software error correction and compression.

The **Connection Setup** option in the **Setup Menu** sets up MNP/V.42/V.42bis connection parameters. This dialog applies type of connection made during the answering of incoming data calls, and calls dialed with the Dial command.

Each entry in the Data Phone List has a separate **Connection Setup** dialog box. When you select add an entry to the Data Phone List, a **Connection** button will be available which will open the **Connection Setup Dialog** for that phone list entry.

Protocol Type

This group of radio buttons selects which type of connection you wish to make. This is the most important selection in Connection Setup. V.42 Auto-reliable will instruct the QuickLink software to try to connect using V.42 first, then try MNP, then if both fail, connect as a standard modem. V.42 Reliable will only try to make a V.42 connection and if no V.42 connection is established, the call will be terminated. MNP Only means that only a MNP connection will be tried. The None selection will instruct QuickLink to make a normal data connection without error correction. If you are having trouble connecting with the other selections, try using the None connection type.

V.42bis Type

If a V.42 connection is made, this option tells QuickLink how to use V.42bis. The Both selection is the most common and is the default. If you wish to disable V.42bis with a V.42 connection, select the Disabled option.

MNP 5 compression

If an MNP connection is made, this check box will control the use of the MNP 5 data compression method. If you wish to disable the use of MNP 5 during a MNP connection, un-check this option.



Configure Modem Settings

The **Modem Setup** option in the **Setup Menu** sets up initialization and command strings for the modem.

Init String

The initialization string sent to the modem during QuickLink startup. Any valid AT command may be placed in this string. Refer to your modem documentation for a listing of the AT command set. If your modem supports the S95 register, you may add S95=40 in your initialization string to have the protocol and compression displayed after a data connection. If your modem doesn't support S95, but supports the W command, you may add W1 in your initialization string to display the protocol after a data connection.

For QuickLink to correctly operate, the S0 register must not be set to anything but zero. This register tells the modem on what ring to answer the phone, but QuickLink needs to have control of when the modem will answer.

Dial String

Command sent to dial the modem.

Dial String Options

Various commands can be inserted into the dial string automatically. These options include pulse or tone dial, detect dial tone, detect busy signal, or disable call waiting. The standard command to disable call waiting is *70. If a different command is required for your phone system, this command will have to be entered into the dial string manually.

Hang Up String

Command sent to hang up the modem connection.

Dial Prefix/Suffix

Numbers that need to be dialed before the normal telephone number may be placed here. For example, you could put a calling card account number in the dial prefix to be dialed before the normal telephone number.

Answer Mode

The answer mode allows you to select the type of calls QuickLink will acknowledge. The choices are:

Ignore Ring	Never answers the phone
Fax Only	Answers all calls but only responds to incoming fax calls
Data Only	Answers all calls but only responds to incoming data calls
Fax & Data	Answer all calls and responds to both fax and data calls

Unless you select never answer (ignore ring), the call will always be picked up, and a detection tone will be emitted to the caller.

If your modem has Distinctive Ring capabilities, QuickLink may be able to take advantage of them. If so, the **Distinctive Ring** option will be one of the choices in the **Answer Mode** box. Selecting **Distinctive Ring** will enable the **Ring Type** button which allows you to determine what action to take for each type of ring detected.

Comm Port

Selects the communications port to which your modem is connected.

Answer On # Rings

Set the number of rings on which to answer the phone. Depending on the computer speed, it may take 1 to 2 extra rings to actually answer the phone.

Caller ID

If your modem has caller ID capabilities, your version of QuickLink may have the **Caller ID** check box. Checking this box will enable the Fax Manager to display any caller ID information as it is received. Un-checking this item will cause the Fax Manager to ignore any caller ID information received.

Hardware

Selects the class of modem for QuickLink to use. The modem class is automatically detected during initial startup of QuickLink. If you change modem types, you may need to set this option manually. Be sure to select the correct type for your particular modem.

Default

Sets the modem settings to their default values.

Do not remove this directory. CMW 8/95

Do not remove this directory. CMW 8/95

Do not remove this blank page. CMW 8/95

Troubleshooting

This section describes some common errors and help for fixing them.

1. **The sent fax comes out squashed or elongated.**

The fax was sent using a different resolution than when the fax was converted. Ensure that the resolution setting is the same for both cases.

2. **Laser printers will not print using a high resolution.**

The printer does not have enough internal memory to store the entire page at high resolution. More memory must be added to the printer or a lower resolution must be used during printing.

3. **Graphic files come out very large after conversion.**

The graphic files are saved at either a very high resolution or low resolution. This mostly occurs in scanned graphic files that were scanned at unsupported resolutions. Graphics should be scanned at resolutions ranging from 100 to 200 dots per inch.

4. **"Unable to convert file - Bilevel error" message appears when converting Windows BMP files.**

In order for BMP files to be converted to Fax, they must be black and white format. BMP files may contain only the colors black and white but they are not true black and white files. Files must be saved as Monochrome Bitmap in Windows Paintbrush. This option can be found by selecting the Options button on the Save dialog.

5. **"Modem not a fax modem" or "Unable to detect modem" message appears when sending a fax.**

A memory or port conflict is present on the system or inappropriate software is being used with the modem. Ensure that the appropriate software is being used with the modem such as class 1 software with a class 1 fax modem or send/receive software with a send/receive modem. If proper software is being used, check for any memory or port conflicts.

If your modem is located on COM3 or COM4, Windows 3.0 sometimes has a problem with these ports in 386 Enhanced mode. If you are having problems sending or receiving faxes and your modem is on COM3 or COM4, you may wish to move your modem to COM1 or COM2 or upgrade to Windows version 3.1.

Related Topics:

[Error Codes](#)

