



WEBactive HTTP Server v1.00

' *World-wide-web servers made easy ...* '

Copyright (C) 1996 by Alistair Carruthers. All rights reserved.



" Zero to Webmaster in seconds ... "

- Alistair Carruthers, Author of WEBactive.

CONTENTS

- | | |
|--|----------------------------------|
| 1. {button Introduction,JI('','Introduction')} | 1.1 What is WEBactive ? |
| 1.2 System Requirements | |
| 1.3 Installing WEBactive | |
| 1.4 Software Copyright &
License Agreement | |
| 1.5 Customer Policy | |
| 1.6 Trademark Notice | |
| 2. {button Getting Started,JI('','Getting_Started')} | 2.1 The WEBactive User Interface |
| 2.2 <i>The File Menu</i> | |
| 2.2.1 Initiate Server | |
| 2.2.2 De-Initiate Server | |
| 2.2.3 Clear Past Process Log | |
| 2.2.4 Exit | |
| 2.3 <i>The Configuration Menu</i> | |
| Services | |
| 2.3.1 HTTP IP Port | |
| 2.3.2 Start Minimized | |
| 2.3.3 Auto-Initiate Server | |
| WEB File/Directory Information | |
| 2.3.4 HTML Root Dir | |
| 2.3.5 Default Document | |
| 2.3.6 Registration Name | |
| 2.3.7 Registration Code | |
| 2.4 <i>The Help Menu</i> | |
| 2.4.1 General Help | |
| 2.4.2 About | |
| 3. {button Order ActiveWEB,JI('','Order_ActiveWEB')} | 3.1 Benefits of Registering |

WEBactive

- 3.2 WEBactive Pricelist
- 3.3 International Order Form

- 4. {button How to Contact us and Support,JI('','How_to_Contact_us_and_Support')}

 - 4.1 itAfrica Distribution
 - 4.2 How to contact the Author



WEBactive v1.00

Copyright (C) 1996 by Alistair Carruthers.
All rights reserved.



WEBactive HTTP Server v1.00

' World-wide-web servers made easy ... '

Copyright (C) 1996 by Alistair Carruthers. All rights reserved.

Getting Started

2.1 The WEBactive User Interface

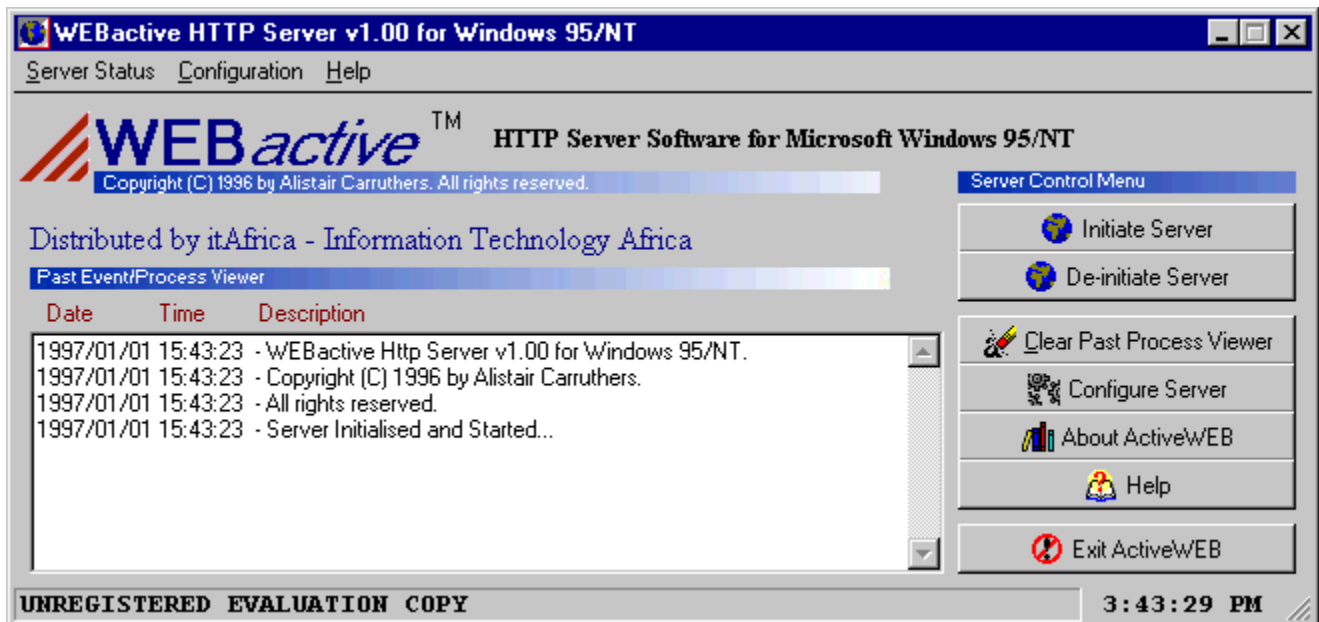


Diagram of the WEBactive HTTP Server Frontend.

2.2 The File Menu

2.2.1 Initiate Server

This option initiates and starts the HTTP Server and allows the HTTP server to process inbound requests from remote users on the Internet.

2.2.2 De-Initiate Server

This option de-initiates the HTTP Server and will not allow or process any inbound requests from remote users on the Internet.

2.2.3 Clear Past Process Log

This option clears the *Past Event/Past Process* Window on the Frontend.

2.2.4 Exit

This option De-Initiates the HTTP server and terminates the Server.

2.3 The Configuration Menu

Services

2.3.1 HTTP IP Port

This field contains the TCP/IP Protocol port number that will be assigned to the HTTP server. The default port usually used for WWW servers is Port 80.

2.3.2 Start Minimized

If this option is selected the *WEBactive* server will on execution minimize itself on the desktop.

2.3.3 Auto-Initiate Server

This option if enabled will automatically initiate the HTTP server when the server is executed. If disabled the HTTP server will have to be manually initiated.

WEB File/Directory Information

2.3.4 HTML Root Dir

This field contains the path to the root location of the HTML files.

2.3.5 Default Document

This field contains the default document that will be displayed if no file is requested by the remote HTTP client.

2.3.6 Registration Name

This field contains the name of the entity who/which registered the copy of *WEBactive*. This will be sent to you when you register *WEBactive*..

2.3.7 Registration Code

This field contains the matching registration code for the name of the entity who/which registered the copy of *WEBactive*. This will be sent to you when you register *WEBactive*..

2.4 *The Help Menu*

2.4.1 General Help

This option loads the *WEBactive* online help file for Windows 95/NT Help.

2.4.2 About

This option displays various information about *WEBactive*.



***WEBactive* HTTP Server v1.00**

Copyright (C) 1996 by Alistair Carruthers.
All rights reserved.



WEBactive HTTP Server v1.00

' *World-wide-web servers made easy ...* '

Copyright (C) 1996 by Alistair Carruthers. All rights reserved.

How to Contact us and Support

You may contact us for information or support via the following methods:

4.1 itAfrica (Information Technology Africa) Distribution



Postal Address

c/o WEBactive Orders
itAfrica Distribution
P.O. Box 34983
Newton Park
6055
PORT ELIZABETH
SOUTH AFRICA

Telephone	(041) 33-4916
EMAIL	itafrika@nis.za
Beltel	*OMNI# or MN# 751610

OR You can visit us on the World Wide Web at :

<http://www.nis.za/homepgs/itafrika.html>

4.2 How to contact the Author

If you wish to contact the author directly you can write to the following address or E-MAIL him at **alistair@nis.za** .

c/o Alistair Carruthers
4 Heythrop Drive
Linkside
PORT ELIZABETH
6001
REPUBLIC OF SOUTH AFRICA

Alternatively you may contact him via *itAfrica* Distribution via the above contact information.



WEBactive HTTP Server v1.00

' World-wide-web servers made easy ... '

Copyright (C) 1996 by Alistair Carruthers. All rights reserved.

_____ WEBactive v1.00 \$ 25-00 / R 115-00
BASIC VERSION

— _____ WEBactive v1.00 \$ 35-00 / R 160-00
FULL VERSION

TOTAL

ADDITIONAL COPIES MUST BE PURCHASED PER EACH COPY OF WEBactive RUNNING SIMULTANEOUSLY.

PAYMENT IS TO BE ENCLOSED WITH YOUR ORDER FORM, BE MADE VIA CROSSED CHECK/CHEQUE OR SOUTH AFRICAN POSTAL ORDER MADE PAYABLE TO ALISTAIR CARRUTHERS OR Information Technology Africa. PLEASE *DO NOT* SEND ANY CASH WHATSOEVER.

•
Printed Name

•
Signature

Date

/

/

•



WEBactive HTTP Server v1.00

' *World-wide-web servers made easy ...* '

Copyright (C) 1996 by Alistair Carruthers. All rights reserved.

Introduction

1.1 What is WEBactive ?

WEBactive v1.00 is a World Wide Web Server (HTTP Server) for Windows 95/NT which allows you to create your own Website on any PC running Windows 95/NT with a TCP/IP Connection to the Internet.

WEBactive was designed to be easy-to-use and installation as well as configuration can be done within minutes. The advantage of this is that almost anyone with an Internet Connection, be it dialup or leased connectivity, will be able to run their own Web server. Another benefit is that **WEBactive** can be used for either Personal or Corporate Applications and automatically adapts to your available hardware. For example the more system resources are available the more threads will be made available for responses to incoming requests and the more efficient **WEBactive** will run.

In conclusion you will find that **WEBactive** is the most easy-to-use, efficient, professional and affordable World Wide Web Server on the market.

1.2 System Requirements

Supported Operating Systems

Microsoft Windows 95
Microsoft Windows NT

Recommended HTML Client Browsers

We recommend the usage of Netscape Communication Corporation's Netscape Navigator or Microsoft's Internet Explorer however any HTML browser should be compatible with **WEBactive**.

Please note that WEBactive will not execute under Windows 3.1 with or without WIN32S extensions.

Recommended Hardware

Because **WEBactive** is a Windows based Application it will run on any machine capable of running Windows 95 or Windows NT. However the performance will be based on the type and speed of hardware which you have installed.

WEBactive has been successfully tested on the following machines :

Intel 80486 DX2-66mhz, 8MB RAM, with Windows 95.
Intel 80486 DX4-100mhz, 16MB RAM with Windows NT
Intel Pentium 100mhz, 32MB RAM with Windows NT

We recommend a minimum of 8 MB RAM when running WEBactive.

1.3 Installing WEBactive

To install WEBactive to your hard disk please follow the following instructions :

1) **Installation from Archive**

If you downloaded **ACTIVE100.ZIP** the following procedure will be applicable to you.

PLEASE NOTE: You will need PKWare's **PKUNZIP.EXE** to uncompress the file.

1) From the DOS Command Prompt enter the following :

PKUNZIP active100.zip

NB! You must be in the directory which **active100.zip** is!

(This will uncompress the files into the current directory)

2) From the DOS Command Prompt type **SETUP** and press **ENTER**

If you were supplied with original copies of **WEBactive** on disk the following procedure will be applicable to you.

1) Insert the **WEBactive** original disk in the disk drive.

2) From the Windows95 / Windows NT desktop select from the launchpad

START then **RUN** then **BROWSE** followed by entering **A:SETUP.EXE**

(assuming you put the disk in DRIVE A:) and then select **OK**.

1.4 Software Copyright & License Agreement

The use and copying of this product is subject to a license agreement. Any other use is prohibited. No part of this publication may be reproduced, transmitted, transcribed, stored in a retrieval system or translated into any language in any form by any means without prior written consent from the author, Alistair Carruthers. Information in this manual is subject to change without prior notice and does not represent a commitment on the part of the vendor.

itAfrica SOFTWARE LICENSE AGREEMENT AND WARRANTY

WEBactive is Copyright © 1996 by Alistair Carruthers. All rights reserved.

This document contains legal binding information about licensing and distribution policy of **WEBactive**. If you do not agree to abide by the conditions and rules as stated in this agreement,

please remove your copy of *WEBactive*.

For information regarding the procedure for registration of *WEBactive*, see Registering *WEBactive*.

- The Term **WEBactive** refers to **WEBactive v1.00**.
- The term "**SHAREWARE version**" identifies the complete package containing the Microsoft Windows 95/NT version of *WEBactive v1.00*.
- By **complete package** we mean: *WEBactive*'s executable file and associated help file.
- The term "**SHAREWARE copy**" identifies an instance of the **SHAREWARE** version.
- The term "**REGISTERED version**" identifies a **SHAREWARE** version *WEBactive* , together with registered user information being entered.
- The term "**REGISTERED copy**" identifies an instance of the **REGISTERED** version.

No component part of *WEBactive* may be distributed individually, disassembled, copied, reverse-engineered, or altered in any form. This includes all elements in the *WEBactive* package, interface items, menus and dialogs, in both the Registered and Unregistered Shareware versions of the software.

- **SHAREWARE VERSIONS MAY BE USED BY PRIVATE AND COMMERCIAL PARTIES FOR TRIAL EVALUATION FOR A PERIOD NOT EXCEEDING 20 DAYS AFTERWHICH CONTINUED USAGE WILL REQUIRE REGISTRATION. FAILURE TO ADHERE TO THIS WILL RESULT IN LEGAL PROSECUTION. IF YOU DO NOT WISH TO MAKE USE OF WEBACTIVE AFTER THIS EVALUATION PERIOD WEBACTIVE SHOULD BE TOTALLY REMOVED FROM THE SYSTEM.**

Distribution

➤ **SHAREWARE** copies may be freely distributed by individual users for trial and leisure usage.

➤ **SHAREWARE** copies may be uploaded to Bulletin Board Systems, FTP Sites, Usenet newsgroups and network sites providing its users with access to download it for trial leisure purposes. Bulletin Board Systems should restrict downloading charges for the **SHAREWARE** version to flat rate connection fees.

➤ **SHAREWARE** copies may **NOT** be distributed as a component of any commercial software collection including but not limited to Shareware CDROMS and Internet Starter Kits without prior written consent from the author and/or distributor. **Permission** is granted to those who are in possession of a "**Non-exclusive Shareware Distribution License**"

➤ **REGISTERED** copies may only be distributed by the author of *WEBactive*, or by the official distributor, itAfrica..

➤ **REGISTRATION** entitles the user to run one copy of *WEBactive* at a time. If you wish to run more than one copy of *WEBactive* simultaneously additional registered copies will have to be purchased for each machine that will be running *WEBactive*. Individual users or sites who wish to use this version of *LView Pro* as a software tool are required to register.

Non-exclusive Shareware Distribution License Agreement

A Non-exclusive Shareware Distribution License Agreement must be signed by the official distributor Information Technology Africa (itAFRICA) or the author of *WEBactive* **BEFORE:**

- Including **WEBactive** in a software product package
- Distribution of *WEBactive* in any form, including but not limited to, Shareware CDROM disks and Internet Starter Kits, be it for Commercial or Educational purpose.

AGREEMENTS MAY, AT THE SOLE DISCRETION OF THE LICENSER, INCLUDE CUSTOMIZATION OF PROGRAM INTERFACE AND/OR EXECUTION FILE OR EVEN TOTAL DISCLOSURE OF THE SOURCE CODE, MAINTENANCE AND/OR UPGRADE CLAUSES.

1.5 Customer Policy **(APPLICABLE TO REGISTERED USERS ONLY)**

Please take the time to complete and return your registration card.

We are committed to your satisfaction of our product. If you have any problems or queries as regard to this software please do not hesitate to contact us via our contact information contained in this document.

1.6 Trademark Notice

WEBactive is a trademark of Alistair Carruthers and Information Technology Africa..
Netscape Navigator is a trademark of **Netscape Communications Corporation**

The following are trademarks of the **Microsoft Corporation:**

Microsoft Internet Explorer
Microsoft DOS
Windows
Windows for Workgroups
Windows 95
Windows NT

 **WEBactive** HTTP Server v1.00
Copyright (C) 1996 by Alistair Carruthers.
All rights reserved.



WEBactive HTTP Server v1.00

' World-wide-web servers made easy ... '

Copyright (C) 1996 by Alistair Carruthers. All rights reserved.

Ordering WEBactive v1.00

3.1 Benefits of Registering WEBactive

Benefits of registering WEBactive include :

- 1) Full Product Support via **itAFRICA** Distribution and the Author.
- 2) Removal of UNREGISTERED Shareware Notice on Frontend and on HTTP Error codes displayed to clients when HTTP request errors occur.
- 3) Notification when new versions or accompanying software for WEBactive is made available as well as discounts on future products.

3.2 WEBactive Pricelist

NB! WEBactive original pricing below is based on the US Dollar \$ and the US\$ price reflected below **will remain constant throughout the period of January 1997 to January 1998**. The South African price will be valid while the US Dollar to South African Rand exchange rate is between R 4,20 and R5,00 to the **one** US Dollar. In the event of the exchange rate being outside this criteria the suitable conversion from US Dollars to South African Rand are to be made.

Product Description	Package Contents	Notes	Price (US Dollars \$)	Price (S.African Rand)
WEBactive v1.00 Registered BASIC VERSION	Registration Code delivered via EMAIL or POST. FULL Support	Registered Educational Institutions qualify for a 15 % discount at time of purchase.	\$ 25-00	R 115-00
WEBactive v1.00 Registered FULL VERSION	Registration Code Laser Printed Manual Original Disks FULL Support Postage, Packing & Insurance	Registered Educational Institutions qualify for a 15 % discount at time of purchase.	\$ 35-00	R 160-00

3.3 International Order Form

