



Getting Started...

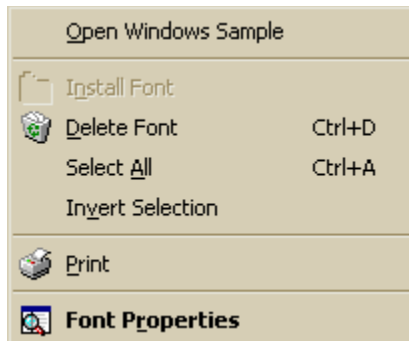
When you start FontLister, you'll see the main screen with a listview-window (located to the left) with all your fonts, and a text-window (located to the right). By clicking on one of the fonts in the fontlist-window, you'll notice that the text in text-window immediately changes its font to the selected one. Click somewhere in the text-window and you can write your own text. You can also import text from file or copy text from another program using standard windows Ctrl+C and Ctrl+V shortcuts).

Try selecting several fonts from the list by holding down Ctrl or Shift while left-clicking in the list. Now change the view-mode by clicking on the  (Compare Mode) button located in the top toolbar. You will get a list of all selected fonts. From this list, you can unselect some of them by right-clicking the font and choose Unselect font from the context popup-menu. Again, you can use Ctrl/Shift to select multiple items.

List of Fonts

This window shows the list of your fonts. Click on a font to view it in the Edit Mode window to the right. If you want to view multiple fonts, click on  (Compare Mode) located in the Tools Toolbar.

To select multiple fonts, press and hold Control (Ctrl) key while selecting fonts. You're able to select a range of fonts by clicking first font and then press & hold Shift while selecting last font in range.



Right-click in this window to bring up the popup-menu shown below. Click on an item to read about its function.

Open Windows Sample

Opens Windows Sample Window with currently focused font.

Install Font

Installs selected fonts on your Windows system (copying selected fonts into Windows system subfolder 'Fonts') and adds them to Windows Font Table. This option is only available in [Fonts in a Folder View](#).

Delete Font**Ctrl+D**

Deletes fonts from Fonts Folder and removes them from Windows Font Table. This option is only available in [Installed Fonts View](#).

Select All

Selects all fonts in list.

Ctrl+A

Invert Selection

Inverts current selection of fonts. This is especially useful if you have selected all fonts in the list and while you were browsing them you unselected the one you did not like. Now you are able to invert the selection and delete them if that is what you want.

Print

Prints selected fonts without prompting you first using settings selected in the Print Window (Ctrl+P). It is especially useful if you want to make a quick print of some fonts without going through the Print Window dialog each time.

Font Properties

Shows Font Properties Window for selected font.

Edit Mode Window

The Edit Mode enables you to type in your own sample text. It works like the Windows Notepad application, i.e. you're able to cut, copy, paste, undo, etc. using the same shortcuts or menuitems. It's only possible to view one font at the time when using this mode; if you want to view multiple fonts use Compare Mode.

Notice: The first line will be used as Sample Text in Compare Mode.

List of useful shortcuts

Undo	Ctrl+Z
Cut	Ctrl+X
Copy	Ctrl+C
Paste	Ctrl+V
Select All	Ctrl+A

Compare Mode Window

You are using this mode to compare multiple fonts. Select fonts you want to compare from the List of Fonts and this window will automatically be updated (and sorted alphabetically) with the selected fonts.

You're able to unselect fonts directly from this list by right-clicking its sample and selecting *Unselect font(s)*. If you want to unselect multiple fonts at once, click them holding down Control (Ctrl) or select a range by clicking the first, press and hold Shift and then press last.

Windows Sample Window

If you have FONTVIEW.EXE installed on your computer and you're in either Fonts in a Folder View or Installed Fonts View, you are able to view the standard Windows Sample for a selected font. Select a font from the List of Fonts and click View->Windows Sample. The FONTVIEW.EXE application will open with the selected font.

Screen Fonts View

This view will list all Screen fonts supported by your Windows system (normally all available). When using Screen Fonts View you are limited in a number of ways, e.g. you are **not** allowed to delete fonts, view extended information about a fonts NameTable, etc. because FontLister only reads the fonts from memory and not from a physical fontfile. That is why Screen Fonts View is much faster in loading your fonts than e.g. Installed Fonts View. If you want to be able to delete fonts, you will have to use [Installed Fonts View](#).

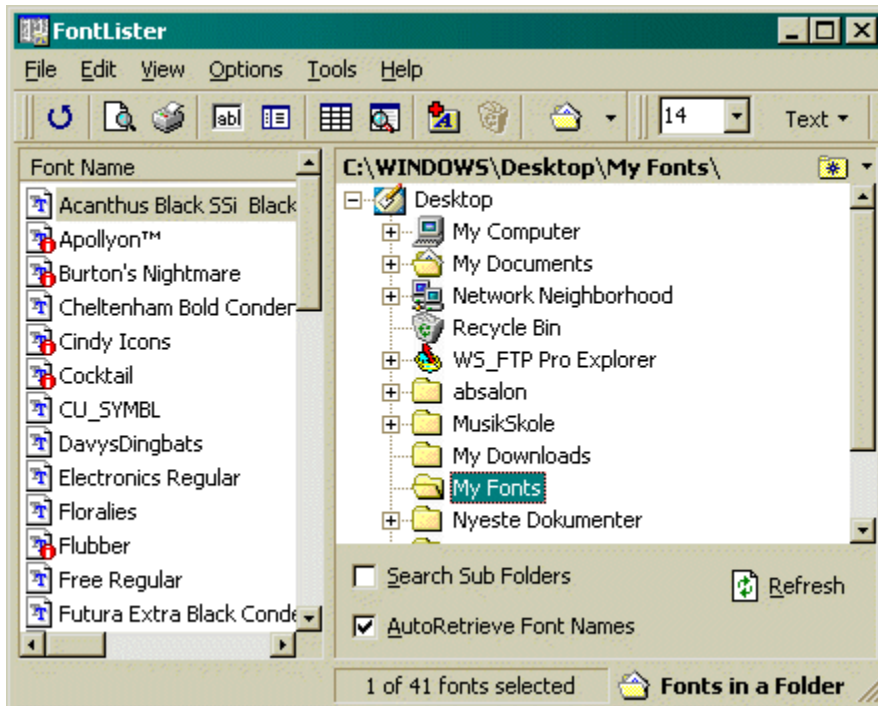
Printer Fonts View

Printer fonts View shows all fonts supported by your selected printer (this is normally all fonts because Windows GUI simulates TrueType fonts like graphics). This View was only meant to be an alternative to the Screen Fonts View which you will normally use for finding your fonts. You are **not** able to delete fonts from this View; use instead the Installed Fonts View.

Fonts in a Folder View

Fonts in a Folder View enables you to view fonts from a CD-ROM or from a specific directory on your harddrive (not installed on system).

When you choose this view (either from the menu or the toolbar) the current Mode (Edit/Compare) will be switched with an Explorer interface as shown below. If you want to search for fonts on your c:\ harddrive expand Desktop -> My Computer -> HDNAME (C:). FontLister will automatically read any fonts it encounters if you have checked 'AutoRetrieve Font Names'.



It might be you want to search your entire C: drive for fonts. To do this, select the root of your C: drive and make sure you have 'Search Sub Folders' set. If FontLister doesn't search your harddrive for fonts, click the Refresh button to initiate the search.

The result of the search is shown in the List of Fonts to the left. If the list is empty, no fonts were found in the specified directory/directories.



Use the **Favourite Folders** button if you want to add the current folder to your Favourites List. This makes it easy for you to access commonly used Fonts Folders.

Click [here](#) for the meaning of legends used in List of Fonts.

Installed Fonts View

This view lists all your installed fonts, i.e. all fonts located in your system Fonts Folder. This is normally the C:\WINDOWS\FONTS directory. When you are using Installed Fonts View, you are able to do certain things not available in Screen/Printer Fonts View, e.g. delete fonts, view Windows Samples, retrieving extended information about a fonts name, etc.

To delete a font from your system, select it from the List of Fonts and use the Edit 4 Delete Font menu-item.

Print Methods

That are the available print methods illustrated with pictures. When you click on one of them, some information about the method will be shown in frame Range below.

All Fonts

When All fonts is selected, all available fonts from fontlist-window will be printed.

Selected Fonts

If **Selected fonts** is checked, only selected fonts from the font listview will be printed.

Print Method Description

This is some information about the above selected print method. Select method by clicking on one of the above layouts.

About FontLister

FontLister is a most comprehensive utility for managing **True Type**, **Adobe Type 1** and **Raster fonts** on Windows 95/98 machines today.

Features:

- 8 easy installing/deinstalling fonts on Windows system
- 8 very detailed informations about fonts
- 8 best catalogization and printing fonts

You can get context help on almost any control. If there's a (question button) in the upper-right corner of dialog, click it, then click on control and you'll get the short description about that control. If there's no question button, press F1 button while the control is active (has focus).

Print Range

If you only want to print the fonts you have selected in the fonts listview, check the **Selected fonts** item or if you want to print all available fonts, then check the **All fonts** item.

Legends of Views

When browsing the different Views you might encounter some different legends to the left of the fontname. Below is a list of all used legends and a short description of its meaning.



Indicates a TrueType (*.ttf) font.



Indicates a TrueType (*.ttf) font already installed on your system. This icon only makes sense, if you are viewing Fonts in a Folder (uninstalled fonts).



Indicates a Raster font.



Indicates an Adobe Type 1 Font.

Frequently Asked Questions (FAQ)

For latest release of the FontLister FAQ make sure to check the online FAQ page at:

<http://www.conquerware.dk/fl.htm> -> FAQ

How do I change the font sample-text, used in compare-mode?

The compare-mode uses the first line in the text-window in edit-mode. Change to edit-mode and write the wanted sample, then change back to edit-mode.

I'm having trouble removing some of my fonts, what's wrong?

If you want to delete some of your installed fonts, I suggest you select the "Installed fonts"-option in the View-menu. This loads **all** your fonts, including all the different font-styles. Ex. the Arial font will be several fonts, like "Arial Bold", "Arial Italic" and "Arial Underline". When viewing your fonts with the "Screen fonts"-option the Arial fonts only shows *one* occurrence - "Arial".

Why can't I print or view the Windows 95 font sample?

To use the default Windows 95 font sample, you need to know the filename of the font you want to view. If you're viewing "Screen fonts" or "Printer fonts" and selects the "Arial" font, FontLister doesn't know which of the "Arial"-fonts to use (Bold, Italic, Underline, ect.). Therefore, you have to view your fonts with the "Installed fonts"- or the "Fonts in a Folder"-option.

How do I install some fonts?

Simple. Just select the "Fonts in a Folder"-item in the View-menu. Now browse to the directory with the fonts. Click on OK when you see the facename and filename of the fonts you want to install. All the fonts are shown in the fontlist to the left in the window. Select the fonts you want to use and go up in the Edit-menu and select "Install font" or "Install fonts" depending on how many fonts you would like to install.

How do I delete some fonts?

Be sure to read the "I'm having trouble removing some of my fonts, what's wrong?" question first! Select the fonts you want to remove from your system from the fontlist to the left. Go to the Edit-menu and select "Delete font" or "Delete fonts", depending on how many fonts you would like to delete. Notice: All fonts are placed in the Recycle Bin if you regret the removal.

Why doesn't the "Refresh"-button refresh my fonts?

The "Refresh"-button is used to refresh the *windows*. If you would like to reload (refresh) the fontlist, go to the View-menu and click the checked mode (Screen, Printer, Fonts In Folder or Installed).

I don't like the standard header and footer on my prints!

If you would like to change them, go to the File-menu and select the "Paper Setup..."-item. In this window, you can customize your header and footer. Ex. you can change the headerfont, tell FontLister to insert current time and/or date and the pagenummer.

The gap between the fontname and the sample is way to small/big!

Go into the Paper Setup (File -> Paper Setup...) and change the value of the splitterline. You'll see three values, the first is the actual line, the second is the minimum value for the line and the third is the maximum.

Is it possible to change the margins of my prints?

Yes! Go into the Page Setup (File -> Page Setup...) and change the values for the left, top, right and bottom margins.

I don't want to be asked if I would delete a font; can I change that?

Yes! Select the Options-menu and uncheck the "Confirm Font-delete"-item.

My computer seems to lock up when I'm using FontLister. Why's that?

It's probably because you have some **bad fonts** installed. Try to remove *all* fonts from "Bayer Corporation an AGFA Division". To do that, click "Start" button, then "Find -> Files or Folders". In the first window, browse to your Fonts directory (e.g. C:\WINDOWS\FONTS) as the one to search in, then type in "Bayer Corporation" (without the quotes) where it says "Containing text", and it will look for that string of text inside all your font files! When you get a bunch of fonts listed as a result, you can get rid of them right by just highlighting and deleting them. If Windows tells you they can't be deleted, right-click on the name and choose "Properties". Remove any checkmarks in any of the boxes marked "Read only" and "Archive" and such. Click OK and try deleting the file again.

When you have removed all these fonts, reboot your system and everything should be working again. Bad fonts are typically included with HP Printers (HP Font Disks).

Some of the images on the toolbar and in the menus are missing.


Older versions of the COMCTL32.DLL file (located in your \WINDOWS Folder) are not able to

show images correctly. Download newest version from the Microsoft Site to correct this. Just click [here](#) to get the install file (it's around 400 kb).

Why doesn't the memobox in Edit Mode save modified text for future sessions?

You'll have to use the Import text option. Go File->Import Text (or press Ctrl+M on your keyboard) and select a textfile you want to use as your sample text. FontLister will ask you, if you want to use this text as your default text. If you confirm, FontLister will always try to load and use this file at startup.

List of Fonts

Click a font to view a sample of it in the Edit Window or Compare Window (located to the right). You are able to view multiple fonts by changing to Compare Mode. Click  to change Mode. Try to right-click in this list. A menu will popup with which allows you to access common functions.

[Read more...](#)

Refresh

Tries to search selected Folder for fonts. Use Refresh if you have changed 'Search Sub Folders' and want to start your search from current Folder.

Search Sub Folders

Search for fonts in *all* sub Folders starting from current one. Especially useful if you want to search entire drives.

AutoRetrieve Font Names

Reads names automatically when found. Especially useful if you want to browse single Folders with few fonts.

Favourite Folders

Use this button if you want to add the current folder to your Favourites List. This makes it easy for you to access commonly used Fonts Folders.

Folder Path

The currently selected Folder. If it reads *Not a valid Folder* you are unable to start a search from here.

Fonts in a Folder Shell Tree

Select a Folder with fonts from this Explorer like tree. Expand nodes by clicking the plus (+) to the left of its name and close nodes by clicking the minus (-). Right-click nodes to bring up a standard shell context popupmenu.

File Menu

Import Text... Ctrl+M

This option is enabled only if you are using Edit Mode. It loads text from a text file into the Edit Mode Window. After importing text FontLister asks if you want this text to be default text.

Export Sample As Bitmap...

This option exports your text sample in Windows bitmap (*.BMP) image file. This option is especially useful for creating various text captions in HTML pages.



Page Setup...

This option calls standard Windows Page Setup dialog for changing size, source, orientation and margins of working page.



Printer Setup...

This option calls standard Windows Print Setup dialog for choosing printer and adjusting its properties.



Print Preview

Previewing the outgoing page.



Print... Ctrl+P

Change options for printing, e.g. header/footers, method, etc.

Exit

Exiting FontLister.

Edit Menu



Undo Ctrl+Z
Undo last action performed in Edit Mode Window.



Cut Ctrl+X
Cuts selected text from Edit Mode Window into Clipboard.



Copy Ctrl+C
Copies selected text from Edit Mode Window into Clipboard.



Paste Ctrl+V
Paste text from Clipboard into Edit Mode Window.

Select All Ctrl+A
Selects all text in Edit Mode Window or all fonts in List of Fonts depending on the focus.



Install Font
Installs selected fonts on Windows system (copying selected fonts into Windows system subfolder 'Fonts') and adds them to Windows Font Table. This option is only available in Fonts in a Folder View.



Delete Font Ctrl+D
Deletes fonts from Fonts Folder and removes them from Windows Font Table. This option is only available in Installed Fonts View.

Every time you try deleting font FontLister ask you for confirmation but if you know what you're doing you can from the Settings Dialog (Option menu) deselect *Confirm Font Delete* and FontLister will not annoy you any more with deleting confirmations.

View Menu



Screen Fonts

Switch to Screen Fonts View.



Printer Fonts

Switch to Printer Fonts View.



Fonts in a Folder...

Switch to Fonts in a Folder View.



Installed Fonts

Switch to Installed Fonts View.



Mode 8 Edit

Switch into Edit Mode.



Mode 8 Compare

Switch into Compare Mode.



ANSI-table

Show ANSI-table Window for selected font.



Font Properties

F4

Show Font Properties Window for selected font.

Windows Sample

Open standard Windows Sample with selected font.

Toolbars 8 Operation Toolbar

Show/Hide Operation Toolbar

Toolbars 8 Text Toolbar

Show/Hide Text Toolbar

FontList

Show/Hide List of Fonts.

Status Bar

Show/Hide Status Bar



Refresh

F5

Refresh all controls.

Options Menu

B

Styles 8 **B**old

Ctrl+B

Use Bold fontstyle.

I

Styles 8 **I**talic

Ctrl+I

Use Italic fontstyle.

U

Styles 8 **U**nderline

Ctrl+U

Use Underline fontstyle.



Text 8 **C**lear All

Clear all text in Edit Mode Window.

Text 8 **D**efault Text

Clear all text in Edit Mode Window and insert default text, e.g. three lines with all letters in the alphabet (uppercase and lowercase), numbers and symbols.

Text 8 **A**NSI Characters

Generate all 255 ANSI Characters and insert in Edit Mode Window.

Use **s**tandard-text

Uses standard text, i.e. one line with uppercase letters, one line with lowercase letters and one line with numbers and symbols.

WordWrap

Wrap lines if they can't fit in Edit Mode Window.



Settings...

Opens Settings Window.

Tools Menu

Open Fonts Folder

Opens up Windows Fonts Folder containing all installed fonts.



Character Map

Opens Windows Character Map with selected font.

Help Menu



[Contents](#)

Opens the [Contents](#) page of this helpfile.

[How to Use Help](#)

Calls standard Windows guide "How to Use Help".

[About FontLister...](#)

Opens a dialog with information about FontLister, i.e. version, release date, install date, registration info, etc.

Settings Window

In this dialog you are able to change various settings. The Window has been split in two sections:

General

Handles general options of FontLister

Layout

Handles options regarding visual layout of FontLister.

OK

Close dialog and save any changes made.

Cancel

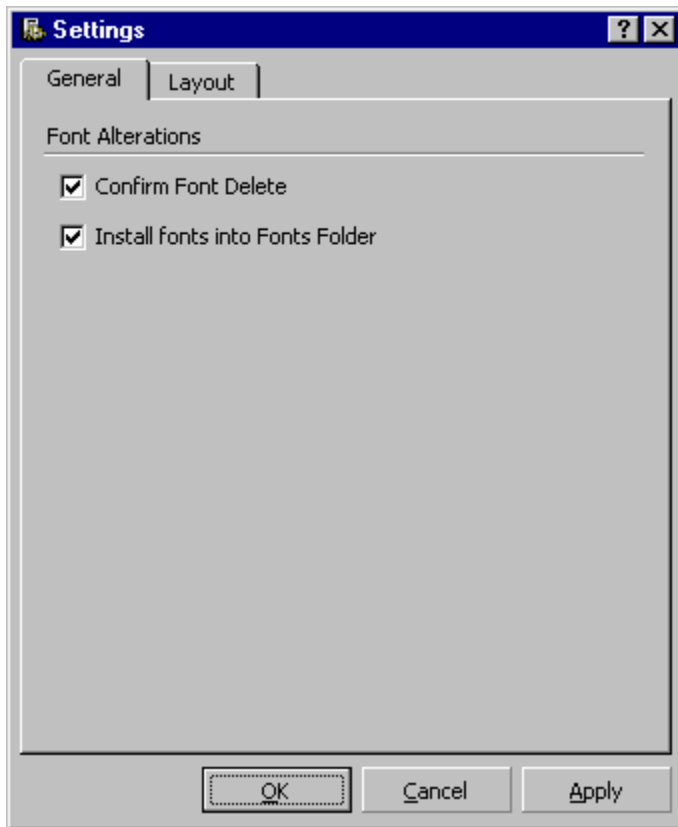
Close dialog and cancel any changes made.

Apply

Apply changes made without closing dialog.

Settings Window: General

Click on the image below to get more information about the different options.



Confirm Font Delete

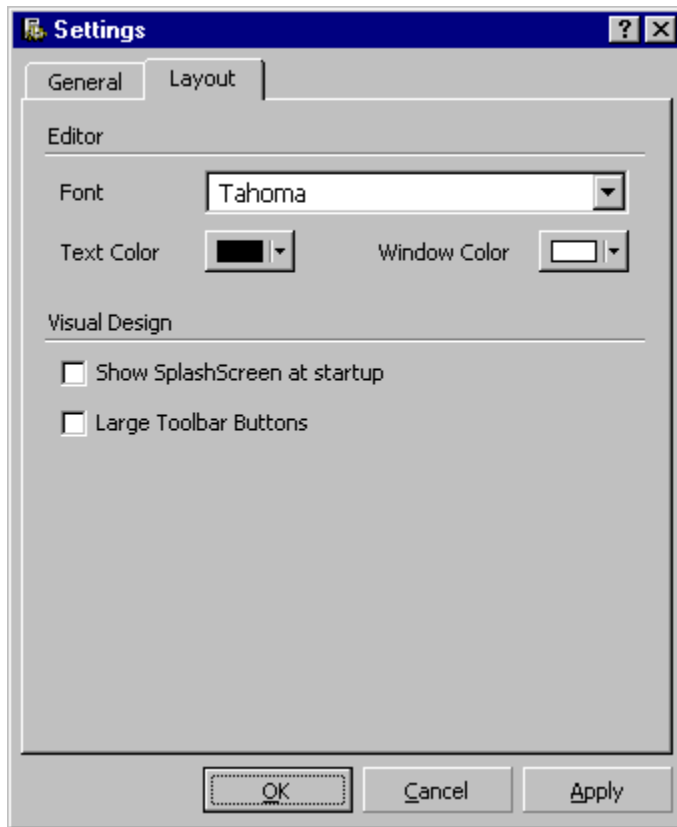
You will be asked to confirm every font delete. If you are going to delete a lot of fonts you might consider unchecking this box before doing so.

Install Fonts in Fonts Folder

Copies all installed fonts into your Windows Fonts Folder (default location is C:\WINDOWS\FONTS). When this box is unchecked, installed fonts will only be installed virtually, i.e. no copy necessary. It's **not** recommended to uncheck this box if you're installing fonts from a CD-ROM because the fonts will become unavailable if you remove the CD-ROM from your drive.

Settings Window: Layout

Click on the image below to get more information about the different options.



Fonts combobox

Selects which font to use as default font in [List of Fonts](#). It should only be necessary to change this if you're having troubles reading certain fonts.

Text Color

Selects color to use as global textcolor in FontLister. If you don't want to use any predefined Windows colors, click 'others' and define your own color.

Window Color

Selects color to use as global window color (background color) in FontLister. If you don't want to use any predefined Windows colors, click 'others' and define your own color.

Show SplashScreen at startup

FontLister will as default show an image while loading. You are able to disable the 'splashscreen' by unchecking this checkbox.

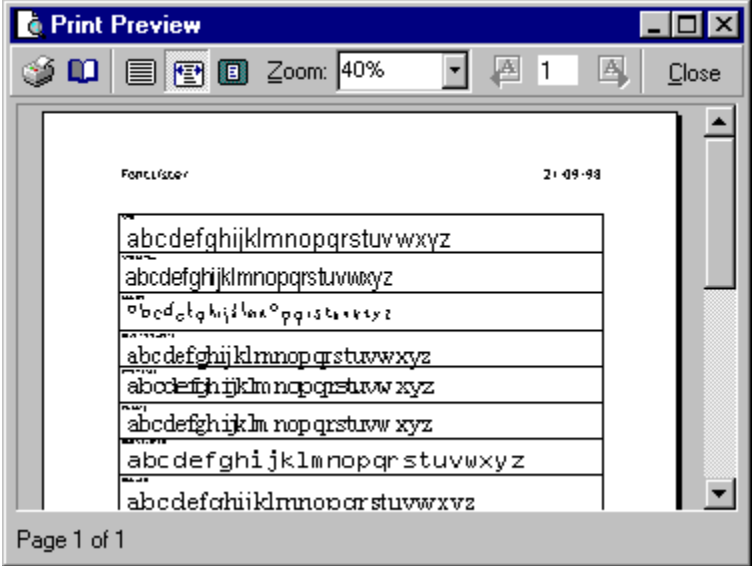
Large Toolbar Buttons

Uses large (32x40) buttons in toolbars. The buttons will furthermore show the buttons function as a text string below the images.

Print Preview Window

You are able to get a preview of the fonts before printing them to your printer, by selecting Print Preview from the File menu.

Click on image to read a description of each item.





Print shown preview.

 **Page Setup**

Open Windows Page Setup Dialog.

100% Zoom

Show preview using real size.

Fit to width

Show preview with a full page width.

Fit to page

Show preview of full page.

Zoom

Select a predefined percent from this combo or type in your own.

Previous page

Move to previous page in set (if available).

Current/Go to page

Type in a page to jump to. Especially useful if your preview contains many pages.

Next page

Move to next page in set (if available).

Close

Close Print Preview.

Preview area

This area shows a preview of all selected fonts.

Statusbar

Shows information about current preview, e.g. number of pages.

Print Window

You are able to change the layout of your prints (e.g. header/footer/size) in this window. The Window is split in three part:

Layout

Select Method and number of fonts to print.

Name and Sample

Select fontname and fontsizes.

Header and Footer

Select Header & Footer.

Print

Print using selected options.

Preview

Open Print Preview Window.

OK

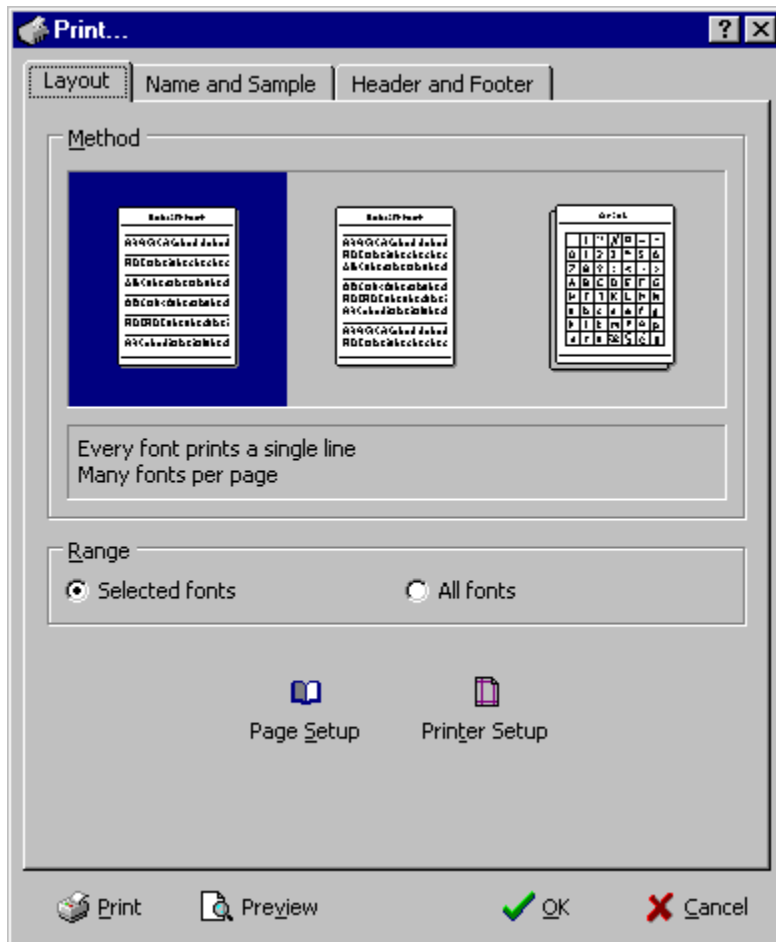
Close dialog and save any changes made.

Cancel

Close dialog and discard any changes made.

Print Window: Layout

Click on the image below to get a description of the options.



Method

The available print methods illustrated with pictures. When you click on one of them, some information about the method will be shown in the frame below.

Range

If *Selected fonts* is checked, only selected fonts from List of Fonts will be printed. If *All fonts* is checked, all fonts will be printed regardless of how many fonts' selected.

Page Setup

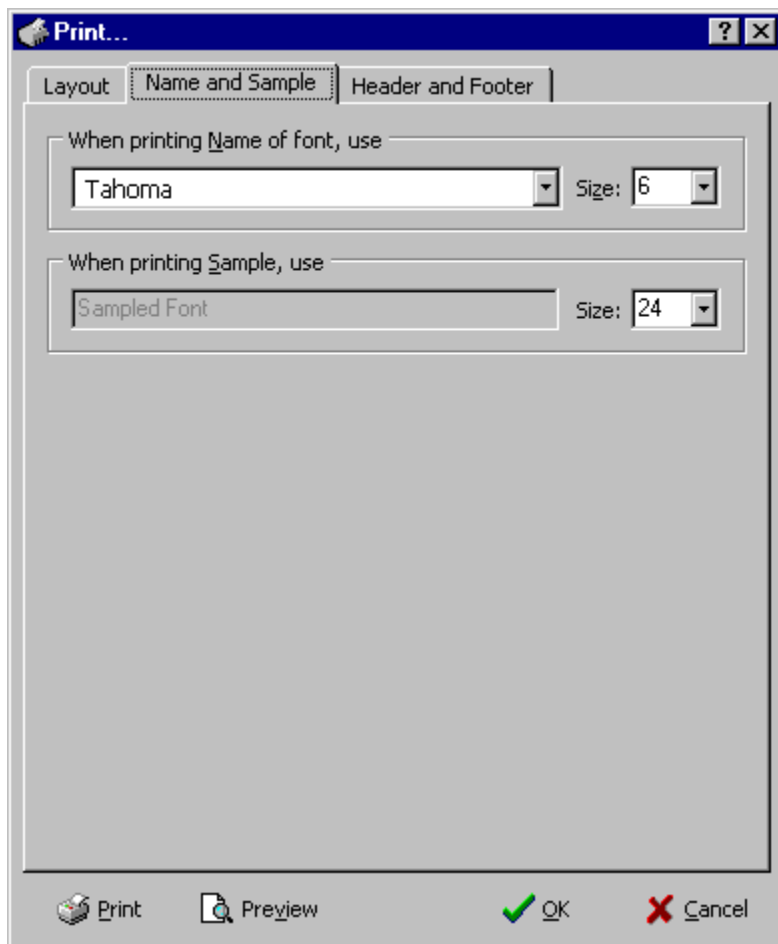
Opens Page Setup Dialog where you can change i.e. margins of page.

Print Setup

Opens Printer Setup Dialog where you can change default printed, DPI, orientation, print quality etc.

Print Window: Name and Sample

Click on the image below to get a description of the options.



Name fontname

Choose which font to use when printing name label of font. This box shows the fontname rendered using the font itself. This makes it easier to pick a readable font.

Name fontsize

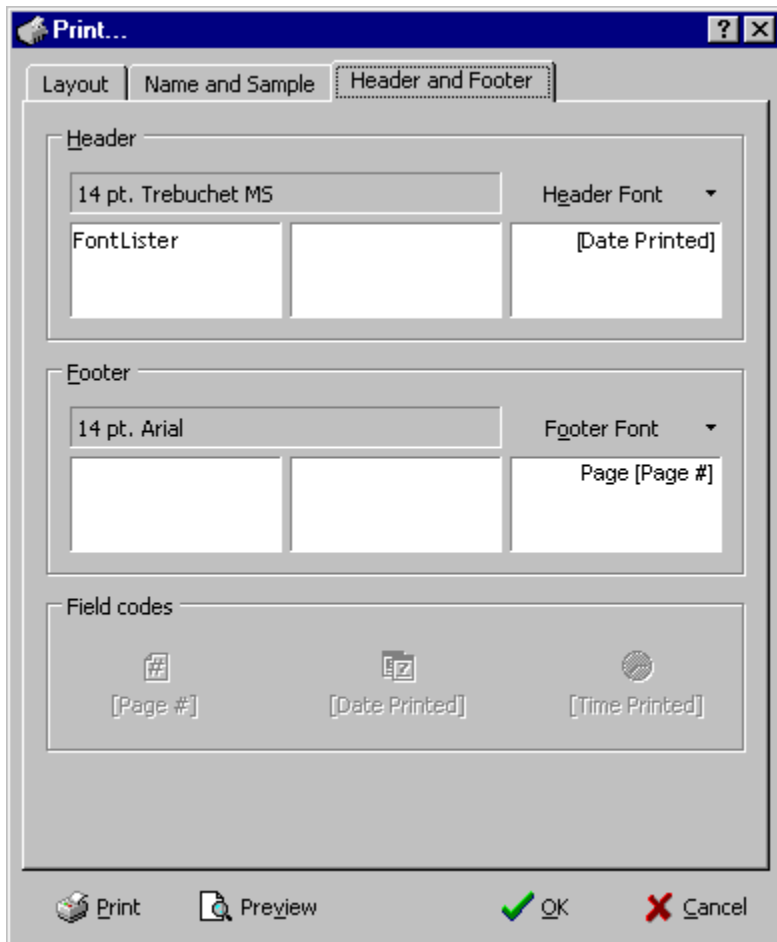
Choose which size to use when printing the fontname itself.

Sample fontsize

Choose which size to use when printing sample of a font.

Print Window: Header and Footer

Click on the image below to get a description of the options.



Selected Header Font

Currently selected header font. If you want to change this font, click *Header Font* button.

Header Font button

Select which font to use in the header.

Header Left

The text or field in this box, will be printed in the upper left corner on every page.

Header Center

The text or field in this box, will be printed in the upper center on every page.

Header Right

The text or field in this box, will be printed in the upper right corner on every page.

Selected Footer Font

Currently selected footer font. If you want to change this font, click Footer Font button.

Footer Font button

Select which font to use in the footer.

Footer Left

The text or field in this box, will be printed in the lower left corner on every page.

Footer Center

The text or field in this box, will be printed in the lower center on every page.

Footer Right

The text or field in this box, will be printed in the lower right corner on every page.



Page Field

Inserts auto-page number field in selected region of header or footer. Auto-page number field automatically shows current page number on printed page.



Date Field

Inserts auto-date field in selected region of header or footer. Auto-date field automatically shows current date on printed page.

**Time Field**

Inserts auto-time field in selected region of header or footer. Auto-date field automatically shows current time on printed page.

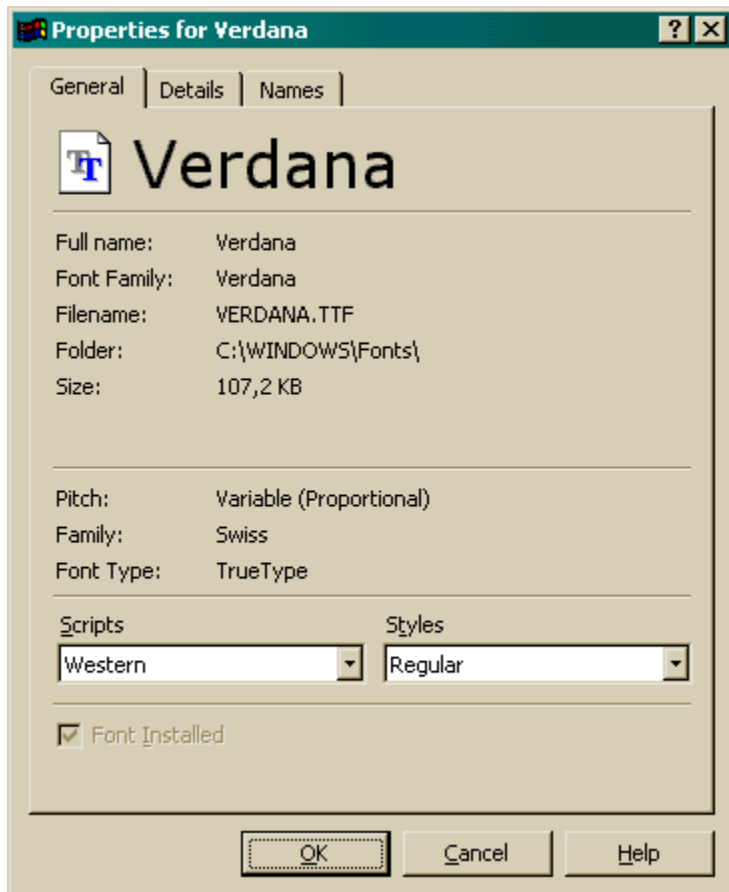
Font Properties Window

The Font Properties Windows shows extended information about fonts.

There's three different tabs in the Font Properties window (General, Details and Names), but only the first two (General and Details) are available when using Screen Fonts View or Printer Fonts View since it's not possible to read Name-information from these fonts.

Font Properties - General

Click on image below to get specific information.



The General tab contains information you mostly would like to know about a font. This is: Full Name, Font Family, Filename, Folder, Size, Pitch, Family, Font Type, Scripts, Styles and if the font's installed.

Font Sample

Rendered sample of font.

Full Name

This is usually a concatenation of the Font Family and the style, e.g. Arial with a style of Bold Italic would typically have Arial Bold Italic as it's full name.

Font Family

The Font Family shows which family the font belongs to, e.g. Arial Bold, Arial Bold Italic and Arial Italic would all belong to the Arial Font Family.

File Name

This is the filename of the physical font.

Folder

This is the path to the physical font.

File Size

This is the size (in kilobyte) of the physical font.

Pitch

A font can either be a fixed pitch (or monospaced) or variable pitch (proportional). A fixed pitch font use the same amount of space for every characters, ie. the width of the letter "i" is equal the the width of the letter "w". A typewriter font are usually using this pitch. In a variable pitch font every characters has it's own breadth, thus the distance between two letters is various. Most text in books and newspapers are written using a variable pitch font (e.g. Arial, Times New Roman and Tahoma).

Family

Font families describe the look of a font in a general way. The values for families are as follows:

Decorative	Novelty fonts. Old English is an example.
Don't Care	Don't care or don't know.
Modern	Fonts with constant stroke width (monospace), with or without serifs. Monospace fonts are usually modern. Pica, Elite, and CourierNew® are examples.
Roman	Fonts with variable stroke width (proportional) and with serifs. MS® Serif is an example.
Script	Fonts designed to look like handwriting. Script and Cursive are examples.
Swiss	Fonts with variable stroke width (proportional) and without serifs. MS® Sans Serif is an example.

Font Type

Specifies the type of the font. The values for font types are as follows:

TrueType	Indicates a TrueType font (e.g. 'Arial' and 'Times New Roman')
Raster	Indicates a Raster font (e.g. 'Courier' and 'System')
Vector	Indicates a Vector font (e.g. 'Myriad Roman' and 'Lithos')

Scripts

Specifies the supported scripts of the font. For example, "Cyrillic".

Styles

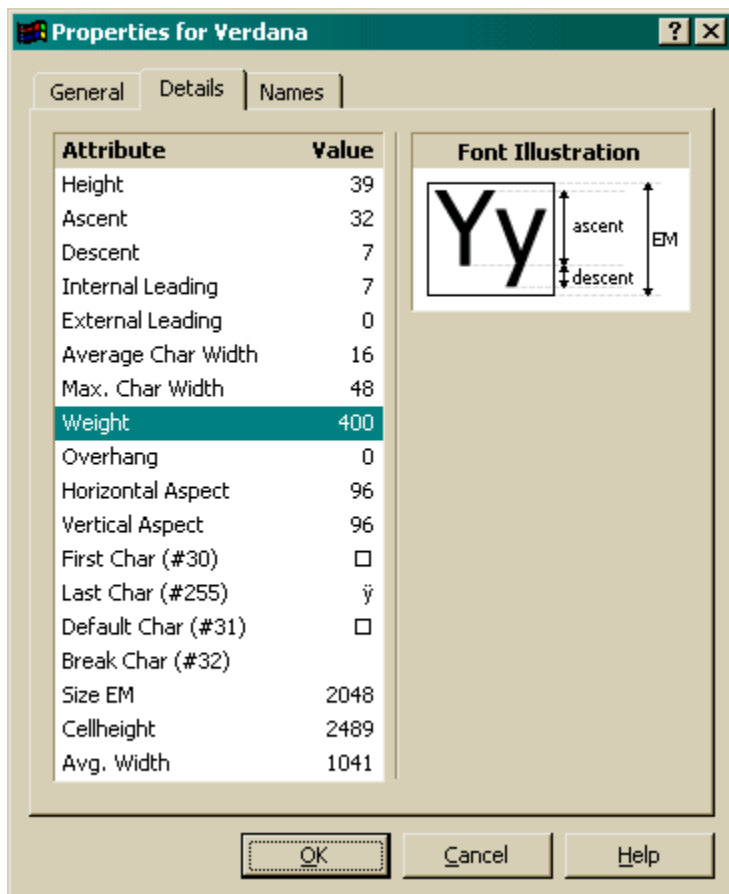
Specifies the styles of the font. For example, "Bold Italic".

Installed checkbox

This combobox is checked if the font is installed (available for use) on the system.

Font Properties - Details

Click on image below to get specific information.



The Details tab contains more detailed information about the font, e.g. height, ascent, descent, weight, etc.

Font Properties Details Tab: Attribute List

Height

Specifies the height (ascent + descent) of characters.

Ascent

Specifies the ascent (units above the base line) of characters.

Descent

Specifies the descent (units below the base line) of characters.

Internal Leading

Specifies the amount of leading (space) inside the bounds set by the `tmHeight` member. Accent marks and other diacritical characters may occur in this area. The designer may set this member to zero.

External Leading

Specifies the amount of extra leading (space) that the application adds between rows. Since this area is outside the font, it contains no marks and is not altered by text output calls in either OPAQUE or TRANSPARENT mode. The designer may set this member to zero.

Average Char Width

Specifies the average width of characters in the font (generally defined as the width of the letter x). This value does not include overhang required for bold or italic characters.

Max. Char Width

Specifies the width of the widest character in the font.

Weight

Specifies the weight of the font.

Overhang

Specifies the extra width per string that may be added to some synthesized fonts. When synthesizing some attributes, such as bold or italic, graphics device interface (GDI) or a device may have to add width to a string on both a per-character and per-string basis. For example, GDI makes a string bold by expanding the spacing of each character and overstriking by an offset value; it italicizes a font by shearing the string. In either case, there is an overhang past the basic string. For bold strings, the overhang is the distance by which the overstrike is offset. For italic strings, the overhang is the amount the top of the font is sheared past the bottom of the font.

Horizontal Aspect (Digitized Aspect X)

Specifies the horizontal aspect of the device for which the font was designed.

Vertical Aspect (Digitized Aspect Y)

Specifies the vertical aspect of the device for which the font was designed. The ratio of the `tmDigitizedAspectX` and `tmDigitizedAspectY` members is the aspect ratio of the device for which the font was designed.

First Character

Specifies the value of the first character defined in the font.

Last Character

Specifies the value of the last character defined in the font.

Default Character

Specifies the value of the character to be substituted for characters that are not in the font.

Break Character

Specifies the value of the character to be used to define word breaks for text justification.

Size EM

Specifies the size of the em square for the font. This value is in "notional units" (that is, the units for which the font was designed).

CellHeight

Specifies the height, in notional units, of the font. This value should be compared with the value of the ntmSizeEM member.

Avg. Width

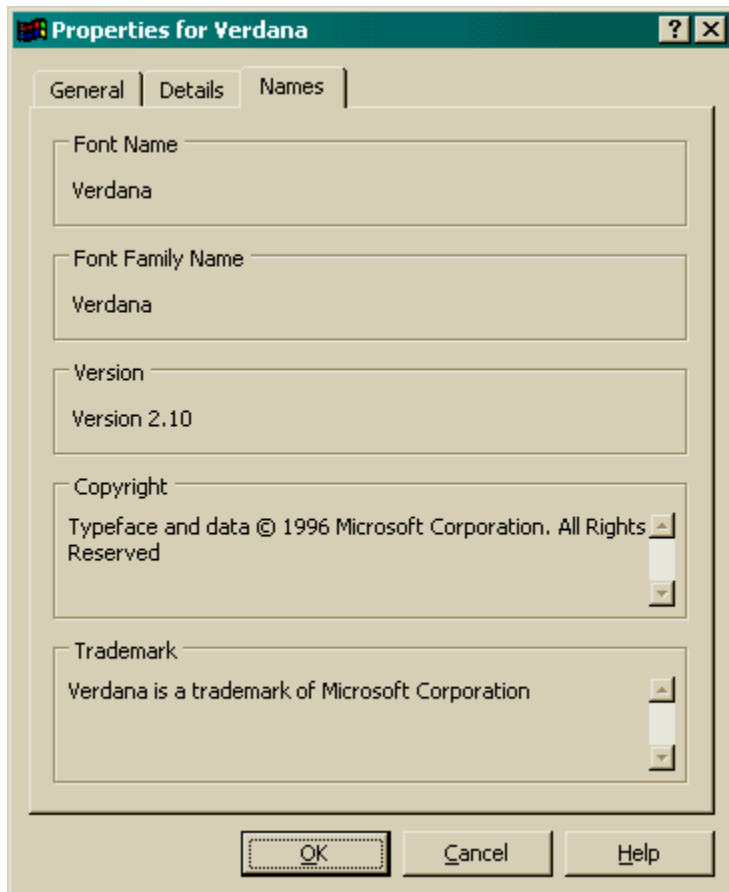
Specifies the average width of characters in the font, in notional units. This value should be compared with the value of the ntmSizeEM member.

Font Illustration

This bitmap illustrations some of the font attributes.

Font Properties - Names

Click on image below to get specific information.



The Names tab contains information about the font and its names, e.g. Font Family and copyright notice. This information is read from the physical font file and is thus only available when current View is [Fonts in a Folder](#) or [Installed Fonts](#).

Font Name

Displays the name of the font, including specific attributes, such as italic or bold.

Font Family Name

Displays the name of the font family to which this font belongs.

Version

Displays the version number of the font.

Copyright

Displays the font's copyright information as included by the font manufacturer. Do not assume that missing copyright information indicates a public domain font, as it is not uncommon for hackers and font-pirates to remove the copyright information contained in commercial fonts.

Trademark

Displays the font's trademark information set by the font manufacturer.

OK

Closes Font Properties dialog and saves any changes made.

Cancel

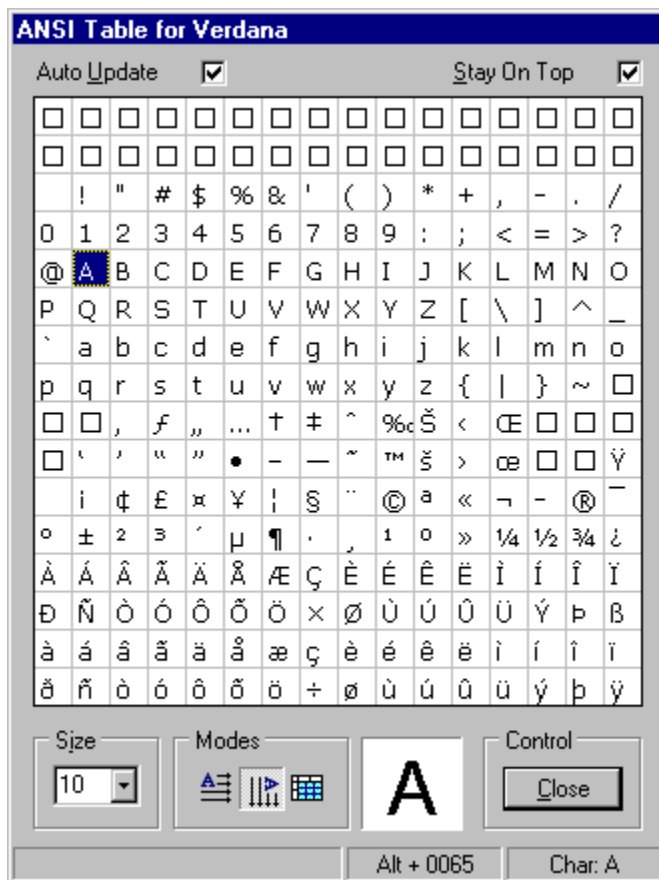
Closes Font Properties Window and cancel any changes made.

Help

Opens FontLister Help for more help about the different items.

ANSI-Table Window

This Window shows all 255 characters of the selected font.



Auto Update

FontLister will automatically update ANSI-table when you pick another font.

Stay On Top

ANSI-Table will stay on top of all other open windows.

Character Table

The ANSI-table (characters from 0-255) for selected font. Right-click to bring up a popup-menu.

Font Size

Selects size for characters in table.

Table Modes



View horizontal table (32 x 8 characters)



View vertical table (16 x 16 characters)



View table with large fields (enables larger font sizes)

Preview Character

Shows currently selected character in table.

Controls

Close ANSI-Table Window.

How do I register?

It's quite easy to register your own copy of FontLister; and it's **only \$5**. Visit the FontLister homepage (see URL below) and select 'order copy' from the left menu or visit the order-page directly by using this url:

<https://www.regnow.com/softsell/nph-softsell.cgi?item=1389-1>

You'll be transferred to a secure server using the latest secure server technology (SSL and RSA), and can ensure secure transactions with users of Netscape, Internet Explorer, and other browsers supporting this technology. It's possible to pay using all major credit cards (VISA, MasterCard, etc).

If you don't feel safe to pay using your credit card, you can mail me a \$5 bill. You *have* to send me the money in cash, since it would cost me too much to exchange a cheque. Please be sure to include your name and your email address in your letter.

Mailing address:

ConquerWare
Attn: Peter Theill
Kalundborgvej 173
4300 Holbaek
Denmark

FontLister page on the .net

<http://www.conquerware.dk/fl.htm>

Email Address

peter@conquerware.dk

