

TOOLKIT for ECCO Professional version 6.1

by Walter E. Heindl

TOOLKIT for ECCO consists of the following five useful add-ins for ECCO:

ORPHAN

Identifies "orphan" items (items that have been removed from all folders but which remain in the file) which cannot otherwise be easily identified or removed from the file.

BIRTHDAY

Searches for all upcoming birthdays and creates a list, showing the current age. **Correctly handles birthdays before 1940!**

CLIPFORM

Copies selected fields (columnar data) for the selected item to the clipboard, in the format of your choosing.

[See CLIPFORM.DOC for complete ClipForm documentation.](#)

EDITNOTE

Permits editing of multi-line notes for the selected item, using a familiar 3x5 card.

[See EDITNOTE.WRI for complete ClipForm documentation.](#)

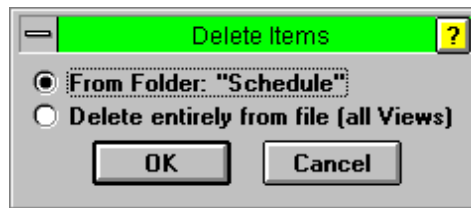
LAUNCHER

Enables ECCO to launch a file specified in a column called "File." This allows the item text to be used for a true file description. If no file is specified, LAUNCHER will provide a file selection dialog. The selected file is then saved in the File column.

All programs rely on DDE and require ECCO Professional 2.0d or later. In addition, certain features of ClipForm require ECCO Professional 3.0 or later. In addition, VBRUN300.DLL (not included but freely available) and THREEED.VBX (included) must be present in your Windows or System directory.

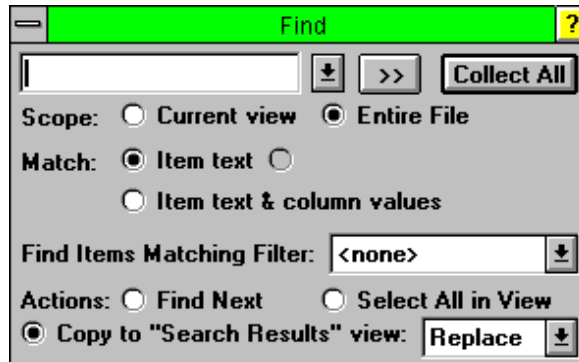
ORPHAN v. 1.0

ECCO Professional permits items to be deleted (unassigned) from a particular folder without removing the item entirely from the file. A byproduct of this, however, is that it is possible to remove an item from *all* folders. Such an item becomes an "orphan" and, since it is not a part of any folder, it cannot easily be viewed, identified or deleted from the file. The larger your .ECO file, and the longer you've worked with it, the more orphan items you are likely to accumulate. These items take up space in the file; and, since ECCO Professional loads the entire file into memory, takes up system memory as well.



ORPHAN provides a simple and *SAFE* way to identify all orphan items in a file. To use ORPHAN, follow these steps.

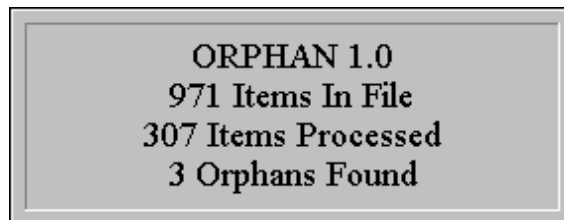
First, select Edit, Find... from the ECCO Professional menu (or press Ctrl-F). This should bring up the following dialog box. (If it doesn't, then click on the ">>" button.)



Make sure the search text box is completely blank. Select "Entire File," "Match Item Text," and "Copy to Search Results View," as shown. Press "Collect All." This will copy every item in the ECCO file, including orphans, to the "Search Results" view. (Be patient. For a large .ECO file, this may take a few moments.)

Second, select all items in the view. You can do this by selecting the first item in the view (not the "Search Results" header, then pressing Ctrl-Shift-End.

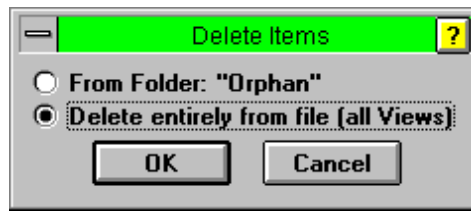
Third, without disturbing your selection, run ORPHAN.EXE from Program Manager or File Manager. ORPHAN will analyze your file and will identify all items that are orphans.



The first time it is run, ORPHAN creates a folder titled Orphan. As it processes your file, each time ORPHAN finds an orphan, it assigns that item to the "Orphan" folder.

Fourth, when ORPHAN has completed its processing, open the Folder window in ECCO and double-click on the Orphan folder. This will display the Orphan folder, which will contain the items that were identified as orphans. (To verify that an item is an orphan, select Item, Show Item Info... from the ECCO menu. This shows all folders containing an item. You will see that the only folder shown is the Orphan folder.)

Finally, either delete the item(s) (assuming they were intended to have been deleted in the first place), or assign them to the appropriate folder(s) (assuming they were partially deleted by accident). If you're deleting the item(s), be sure you delete them completely from the file!

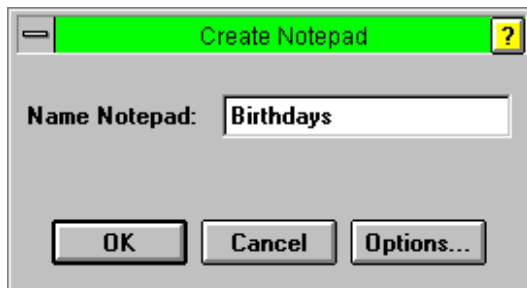


BIRTHDAY v. 1.0

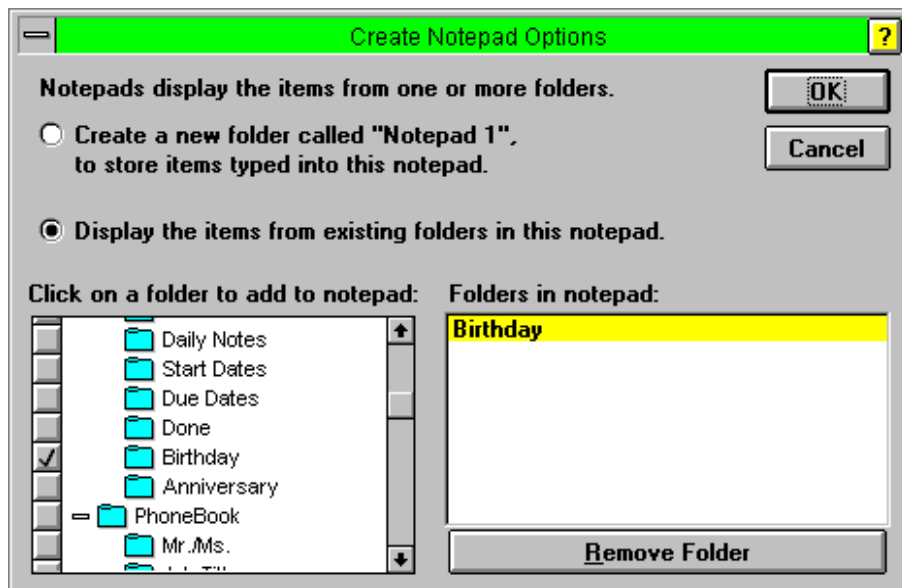
Have you wanted a way to have ECCO Professional remind you of upcoming birthdays? BIRTHDAY creates a list of all upcoming birthdays, and figures out the age. Moreover, BIRTHDAY automatically corrects for birthdays earlier than 1940, which ECCO does not handle directly.

To use BIRTHDAY, simply follow these steps.

First, create a Notepad in ECCO Professional. Title the Notepad "Birthdays."

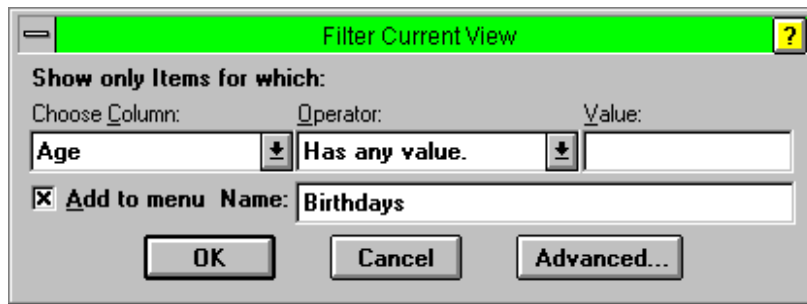


Second, press the "Options" Button. The following dialog box will appear. Select "Display Existing Folders" and choose the "Birthdays" folder.

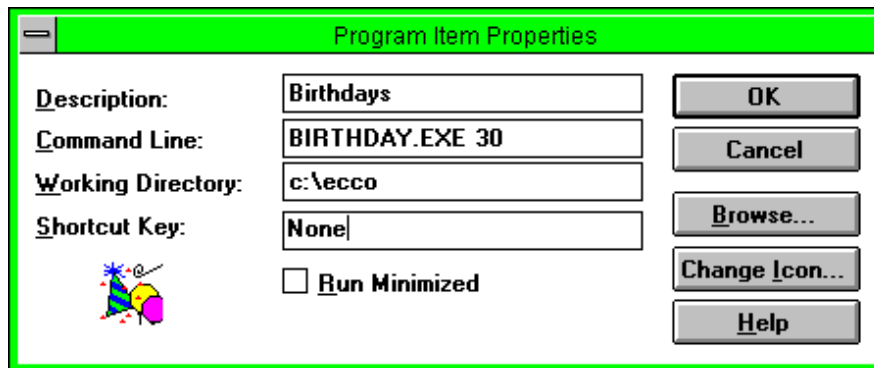


This will create a new notepad titled "Birthdays." Go to this notepad. It should show all names in your ECCO file to which you've assigned birthdays. Now, add a new text column to this view called "Age."

Next, create a filter for this view. The filter should only show items for which there is a value in the "Age" column. When you first apply this filter, all items in the Birthday notepad should disappear.



Go to Program Manager and create a program item for BIRTHDAY.EXE. Registered version only: include the number of days' desired advance warning on the command line. (The Shareware version is preset to warn 17 days in advance.)



Now run BIRTHDAY. If your ECCO Birthdays notepad is visible, you'll see the next 30 days' birthdays appear in the view, one by one, with each person's age in the "Age" column!

Each time you run BIRTHDAY, the list will be updated. Please note that ECCO must be running and the desired file must be active. (The Birthdays notepad need not be visible, but if it is visible, it will display the progress of the program.)

BIRTHDAY has two special features. First, ECCO does not directly handle dates before 1940. That is, if you enter "12/25/39," ECCO interprets this as "December 25, 2039." BIRTHDAY automatically compensates for this and subtracts a century from years before 40, so that "12/25/39" would be interpreted as "December 25, 1939." This makes handling birthdays practical in ECCO.

Second, the year "00" has special meaning. Use this year for persons whose year of birth is unknown (like Zsa Zsa Gabor). The age will be displayed as "???" (Apologies to persons born in 1900 . . . but wouldn't you rather have your age appear as "???"?)

LAUNCHER v. 2.0

ECCO Professional permits files (programs and documents) to be added as items, and will launch those files. However, ECCO requires that the file name and path name both appear in the item text – thus still confining the user to cryptic DOS 8+3 filenames and pathnames. While it is possible to add a column to show a description, there has to be a better way.

Now there is! LAUNCHER permits the name of the file to be placed in a column titled "File," and will launch that file when it is run. Now the item text can be used for a true file description!

To use LAUNCHER, copy LAUNCHER.EXE to the directory of your choice (e.g. your ECCO directory). You may add LAUNCHER to your ECCO toolbar (follow the directions given below for CLIPFORM). You must then create a column in your .ECO file titled File. For each file that you want to launch, put the name of the

file, along with the full pathname, in this column. Then, enter a full description as the item text! When the LAUNCHER icon is pressed, the file will be launched. LAUNCHER looks in WIN.INI to find the name of an associated application, and runs that application (e.g. PBRUSH.EXE associated with .BMP files, etc.).

LAUNCHER has two additional features. First, if you omit the full path name, LAUNCHER will look in the WIN.INI in a section titled [Ecco Launcher] for the extension of the file, to find a default location. For example, if you place all your .PCX files in a directory called c:\clipart, place the following entry in WIN.INI under [Ecco Launcher]:

```
pcx=c:\clipart\
```

Please note that the trailing backslash **MUST** be included. This feature allows the full path to be omitted from the .ECO file, as long as the file is in the location specified in WIN.INI. This helps keep down the size of the .ECO file, and makes entering data easier.

LAUNCHER will also launch a default application if none is associated with the document. For example, to make Notepad the default application, add the following line to WIN.INI in the [Ecco Launcher] section:

```
Default=notepad.exe
```

The full pathname can be omitted if the application is in the DOS path.

The enclosed file ADD2WIN.INI shows typical entries in this section.

NEW TO VERSION 2.0: If there is not already a file in the File column, Version 2.0 will launch a file selection dialog box. This will permit the user to select a file, which will then be saved in the File column. If you run LAUNCHER again, it will launch the file!

NOTE: If the file's path matches the default path in WIN.INI, then LAUNCHER will strip the path name when saving the file name to the File column. For example, if the following entry is present in WIN.INI:

```
[ECCO Launcher]  
pcx=c:\clipart\
```

and if you select the file "c:\clipart\logo.pcx," then LAUNCHER will save "LOGO.PCX" in the File column, since the full pathname is not necessary. If, however, you select the file "c:\business\logo.pcx," then the entire pathname will be saved to the Files column.

REGISTRATION

To register TOOLKIT for ECCO, send \$19.95 to:

Walter E. Heindl
271 Misty Patch Road
Coatesville, PA 19320

You will receive a password which will remove the shareware delay and activate the registered user features of CLIPFORM and EDITNOTE. **Please provide an e-mail address for delivery of your password.**

TOOLKIT can now be registered online on CompuServe. Type GO SWREG for details. Toolkit's registration number is 7927.

Please report any comments, bugs, suggestions for enhancements, etc.:
Internet: usk77ueb@ibmmail.com

DISCLAIMER

This software is offered "as is," without any warranty, express or implied.
TOOLKIT for ECCO, Shareware version, may be freely distributed, provided all files are intact.
ECCO is a registered trademark of NetManage, Inc.

Copyright © 1994-1996 by Walter E. Heindl