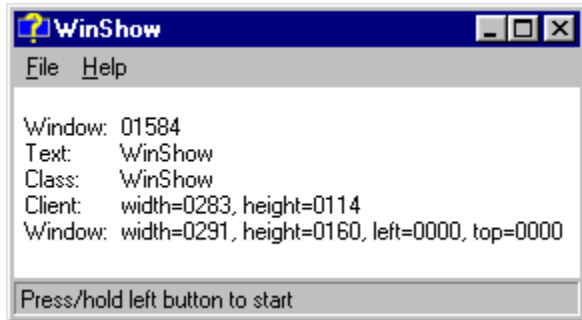


WinShow

WinShow is a simple utility which displays the characteristics of windows underneath the cursor as the cursor is moved across the screen.

When WinShow is started, the following window will appear:



By clicking and holding the left mouse button down and moving it across the screen, the window under the cursor will have its attributes displayed in the **WinShow** window. These attributes include:

Window Handle

Text caption

Class

Client width and height

Window width, height, and position

For more information please see the WinShow World Wide Web home page at <http://rampages.onramp.net/~kolban/shareware.htm>

Please let me know what you think of this utility by sending E-Mail to kolban@onramp.net.

