

Table of Contents

[Introduction \(READ ME!\)](#)

[Advent31 vs. Advent96](#)

[Main Window / Menu](#)

[Setup MIDI Ports](#)

[Advanced Gravis UltraSound](#)

[Thanks and Acknowledgments](#)

[Technical Support](#)



TM

Advent31TM

Freeware Win 3.1 General MIDI Advent Calendar
Copyright © Jeff Cazel, 1992-1996
All Rights Reserved

Introduction to Advent31

Welcome! We hope you enjoy **Advent31**.

Jeff Cazel

PowerJam Systems

February 1996

Internet: jeff@powerjam.com CompuServe: 72461,3345

Overview

Advent31 is a freeware Advent Calendar that plays a different Christmas carol each day. Larry Roberts has created beautiful arrangements of twenty-five public domain carols. When you select the appropriate day from the **Advent31** screen, you'll read that day's Bible verse accompanied by beautiful music. And **Advent31** lets you choose between the New International and King James Versions of the Holy Bible.

There is also a shareware (non-free) version of **Advent** for Windows 95. Check the [Advent96 vs. Advent31](#) help topic for more details

Minimum System Requirements

Microsoft Windows 3.1, mouse or other pointing device, 256-color video, 386sx processor
General MIDI device with Windows driver, including [Gravis UltraSound](#)

Note: computers without MIDI can still use **Advent31**; they simply will not be able to play any music. Similarly, 16-color video drivers will work, but the Advent scene will be ugly.

Quick Start

- 1 **Run SETUP** and follow the instructions on the screen.
- 2 **Start Advent31**—double-click on the **Advent31** icon in the **PowerJam Systems** Program Manager group.
- 3 **Read the opening dialog box's instructions** and you're on your way!

Legal Information

Advent31 is a copyrighted program—you may not change it in any way. You may not reverse engineer, decompile or disassemble the software.

PowerJam Systems hereby disclaims any and all warranties relating to this software and documentation both express and implied, including any merchantability or fitness for a particular purpose. **PowerJam Systems** will not be liable for any incidental, consequential, indirect or similar damages due to loss of data or any other reason. The person using the software bears all risk as to the quality and performance of the software.

Advent31, **Advent96**, **Advent97** and **Advent98** and the sunglassed Beethoven are trademarks of Jeff Cazel.

Please help us distribute **Advent31** as widely as possible (thanks!) by making sure all of your favorite bulletin boards have a current copy of the **official Advent31 archive** file (the official archive displays *Authentic files Verified! #VHI634 Jeff Cazel* above your DOS prompt upon dearchiving—be sure to look for it!). You may freely distribute **Advent31** as long as you include only the unmodified **Advent31 archive** file and you charge no money except for a maximum copying fee of \$10 US.

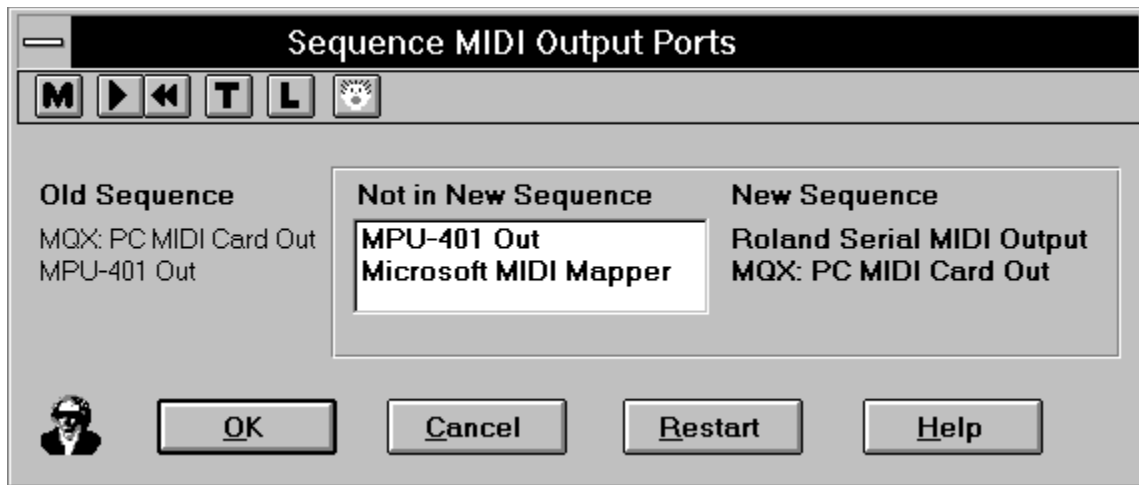
You are welcome to include **Advent31** (i.e., the unmodified **Advent31 archive** file by itself) on your shareware CD-ROM collections, etc., as long as you notify us that you plan to do so (either via e-mail or a phone call).

Setup MIDI Ports

(Most users will not need to read this topic, since the default should work correctly.)

Setting up your MIDI ports consists of the **Setup-Select Output Port** menu option and the **Setup-Sequence MIDI Output Ports** dialog box.

Select Output Port lists each MIDI port you have sequenced (see below) and places a check mark to the left of the port that **Advent31** is currently using. To change to a different port, simply select it from the **Select Output Port** menu. (If the menu does not list the desired output port, you must run the **Sequence MIDI Output Ports** dialog first (as shown below).)



If you have more than one output port, you can have **PowerJam Systems** programs use some or all of them. To do so, sequence the output ports to match your multi-port MIDI files. Do so by double-clicking, in order, on the relevant ports in the **Not in New Sequence** column (this will move them to the **New Sequence** column). For example, the picture above shows that I am changing my sequence from the MQX as #1 and the MPU-401 as #2 (**Old Sequence**) to the Roland Serial as #1 and the MQX as #2 (**New Sequence**). If I want to, I can still add the MPU-401 and the MIDI Mapper to the **New Sequence** column as #3 and #4 before selecting **OK**.

In summary, when you select **OK**, the **New Sequence** takes effect. If you select **Cancel**, however, the **Old Sequence** remains in effect.

If you have a single MIDI interface like most of us, you can simply move it by itself into the **New Sequence** column.

If you sequence the ports incorrectly, select the **R**estart button to move all **New Sequence** ports back to **Not in New Sequence**. You can then restart sequencing your ports.

Advent96 vs. Advent31

Many users will recognize that **Advent31** is essentially the same as the unregistered version of **Advent95** for Windows 3.1. In essence, we have discontinued the Windows 3.1 (16-bit) series of **Advent** and are focusing on Windows 95. So, for 1996 and beyond, we will concentrate on improving the 32-bit **Advent** series.

All users are welcome to continue using **Advent31** under both Windows 3.1 and Windows 95. However, if you have Windows 95 (or its successors), you might wish to look at **Advent96** and its successors—**Advent96** has several features not available in **Advent31**. For example,

- 1 — **Advent96** program is generally ‘prettier’—it does not ‘stretch’ the Advent picture(s) to fill the screen, it displays the carol names as they play, and its Setup screen is nicer.
- 2 — **Advent96** allows you to play all songs in order or at random (‘album play’ mode). In addition, you can customize the tempo and key of each song.
- 3 — **Advent96** automatically plays that day’s song and displays that day’s verse from December 1 through December 25.

Remember—**Advent96** is shareware, so it doesn’t cost you anything to take a look. [Click here](#) to locate an **Advent96** host site.

Advent31 Archive File

PowerJam Systems creates the official **Advent31** archive file by packing all necessary files into a maximally-compressed PKZIP 2.04 archive. We also use PKZIP's authenticity verification feature; this helps ensure that no one has tampered with the archive file that you download. When you PKUNZIP the archive, the process will end by displaying

```
Authentic files Verified!   # VHI634  
Jeff Cazel
```

Please be sure to look for this authenticity verification message.

Note that simply renaming the archive file does not cause any problems. In fact, many bulletin board systems prefer that the ZIP filename contains version information (e.g., ADV_100.ZIP for **Advent31** version 1.00). Thus, feel free to rename the archive file when you upload it, but do not add your own ZIP comments, do not add or remove any files, etc.—future downloaders have no idea what else, if anything, might have been tampered with. Thank you for adhering to this policy.

Main Window / Menu

Advent31's main window consists simply of a Christmas-oriented picture. This window is a 5x5 matrix that creates a 25 day Advent Calendar (one cell for each December day through Christmas). As you move the cursor through this matrix, its shape changes to note the underlying date. When it assumes the desired shape (e.g., '24' for Christmas Eve), simply left click to display that day's verse and play its carol.

Advent31's menu does not normally display so as not to interfere with the Christmas scene. To display the menu, however, simply click the right mouse button whenever a Bible verse is not displaying.

Advent31 has keyboard accelerators for *Mute* (Ctrl+M) and *Exit* (Alt+F4).

Advent31's main menu consists of four options: Setup, Mute, Help, and Exit.



Setup Menu

Setup-Select Output Port (see)

Setup-Sequence MIDI Output Ports (see)

Setup-Use Christmas Colors

This option allows you to alternate between using your default system colors and **Advent31**'s red, green and white motif. **Advent31** starts in non-Christmas color mode.

Mute / Panic Button

This option stops the song (if playing) and sends "all notes off" and "reset all controllers" messages on each MIDI channel of each sequenced MIDI port.

Help Menu

Help-Contents

This option displays the table of contents for **Advent31**'s online help system.

Help-Search for Help on

This option displays the list of cross-referenced **Advent31** help keywords. You can search for information on any indexed word or phrase as listed here.

Help-How to Use Help

This option displays Windows' own 'how to use help' tutorial.

Help-About Advent31

This option displays the sunglassesed Beethoven trademark and plays the **PowerJam Systems** fanfare. Its purpose is to list copyright and program version information.

Exit—terminates **Advent31**.

Thanks...

Thank you very much **Larry Roberts** and **Jacqui Kinnie**!

The quality of Larry's efforts are obvious anytime you start a song. He arranged and sequenced forty Christmas carols for this project. He also researched the history of each song and provided it in a Write file for our enjoyment.

Jacqui Kinnie, CompuServe's *Sight and Sound* forum sysop, contributed the beautiful winter scene to the program. Contact Jacqui at Blue Valley DesignWorks at 1-800-545-6172. Artwork used by permission of Jacqui Kelley Kinnie.

Thanks again for the help!

...and Acknowledgments

NIV Scripture taken from the HOLY BIBLE, NEW INTERNATIONAL VERSION. Copyright © 1973, 1978, 1984 International Bible Society. Used by permission of Zondervan Bible Publishers.

MIDI Programmer's ToolKit for Windows, Copyright © 1994, by Paul A. Messick and Music Quest, Inc.

Advanced Gravis UltraSound Support

Thanks to John Cowles for this information and help topic. If you have any problems using your GUS with **Advent31**, feel free to contact John on CompuServe at #72074,451 or on the Internet at cowles@hydra.convex.com

How to use Advent with your GUS

Because **Advent31** is not a patch-caching application, we have included a configuration file to use with the GUS Patch Manager.

To use the configuration file, open the Patch Manager, and in the 'FILE' menu, click on 'Load configuration...'

Change to the directory where **Advent31** is installed and load the file 'GUSINIT.PCF'

After this file is loaded, you may exit Patch Manager and start **Advent31**.

Note that the patches used in Advent require 900KB of memory on your GUS, so you will need to have a full megabyte installed in order to hear all the instruments correctly.

Because you may want to substitute your own patches for those which are standard from Gravis, we have included a full list of all the patches used below.

The carols used in **Advent31** were originally voiced for a Roland Sound Canvas, and some of the GUS patches are louder or softer than those on other synthesizers. Because of this, you *might* want to use the GUS program "Patchmaker" to change the volume level of individual patches. **Remember to save the original patch before you do this!**

Have fun!

Patches For Advent31 Carols

Patch 0	Piano
Patch 6	Harpsichord
Patch 10	Music Box
Patch 11	Vibraphone
Patch 14	Tubular Bells
Patch 19	Church Organ
Patch 24	Nylon String Guitar
Patch 46	Harp
Patch 47	Timpani
Patch 48	Fast Strings
Patch 49	Slow Strings
Patch 56	Trumpet

Patch 57	Trombone
Patch 58	Tuba
Patch 59	French Horn
Patch 68	Oboe
Patch 69	English Horn
Patch 70	Bassoon
Patch 71	Clarinet
Patch 72	Piccolo
Patch 73	Flute
Patch 82	Synth Calliope or Pan Pipe

Standard Percussion Set

38	Snare Drum
55	Splash Cymbal
57	Crash Cymbal 2
67	High Agogo
76	High Woodblock
77	Low Woodblock
78	Mute Cuica
79	Open Cuica
81	Open Triangle
83	Jingle Bell
84	Belltone

PowerJam Systems

General Information

January 1996

Table of Contents

How to Contact Us

Bulletin Board

Updated Versions?

Order Form



™

**Rhodes Warrior, CanvasMan, Advent95, and the
sunglassed Beethoven picture are trademarks of Jeff Cazel**

Copyright © 1994-1995 Jeff Cazel All Rights Reserved

How to Contact PowerJam Systems

There are several ways to contact us. The best and fastest way is via a message on the CompuServe MIDI forum (“GO CIS:MIDIFORUM”).



We scan the MIDIFORUM's Windows section at least daily unless we are on vacation. Other **PowerJam** customers can see these messages, too, and perhaps answer some better than we can. For these and other reasons, the MIDIFORUM's Windows section is the official support forum for **PowerJam** applications.

Though you will probably get the best response if you ask questions publicly in the MIDIFORUM, you can certainly send us private electronic mail, too. Our CompuServe e-mail address is

72461,3345

You can also reach us via Internet e-mail at

jeff@powerjam.com

Lastly, you can also visit our World-Wide Web site at

<http://ourworld.compuserve.com/homepages/powerjam>

If you have problems with any **PowerJam Systems** program, please note the program's version number. This information displays on the **Help-About** screen.

Getting Updated Versions of PowerJam Systems Programs

See also [PowerJam Systems BBS](#)

Overview

Registered users of any **PowerJam Systems** shareware program are always entitled to use the latest version of the program(s) they registered. Though you can always order an update via the order form, the fastest way to get a current version is to download it as described in this help topic.

If you have purchased a retail version of one of these programs, contact either the dealer or **PowerJam Systems** directly for upgrade information. The rest of this help topic does not apply to retail versions.

Internet

The latest version of **PowerJam Systems** shareware applications are available via our World-Wide Web site. Fire up your Web browser and go to

<http://ourworld.compuserve.com/homepages/powerjam>

The helpful screens will take you to the software quickly.

CompuServe



As mentioned in [Contacting PowerJam](#), the CompuServe Information Service is the official support forum for **PowerJam Systems** programs. New versions will arrive here first. All programs are in the MIDIFORUM (type **GO CIS:MIDIFORUM** at any ! prompt). The **Rhodes Warrior** and the **SongCanvas** are in library 7 (DOS) as RHODES.ZIP and SNGCVS.ZIP, respectively. **CanvasMan** and **Advent95** are in library 11 (Windows) as CNVSMN.ZIP and ADVENT95.ZIP, respectively.

Bulletin Boards

In addition to CompuServe and the Internet, many bulletin board systems (BBSs) also carry our programs. The file names will vary, but generally they will be the same as those on CompuServe plus the version number. For example, version 4.9 of **CanvasMan** would be CNVSMN49.ZIP. Similarly, version 3.2 of the **SongCanvas** would be SNGCVS32.ZIP. Note that we have used PKZIP 2.0 to archive the programs.

Also note that we have used PKZIP's authenticity verification feature; if you do not see **Authentic files Verified! #VHI634 Jeff Cazel** upon unarchiving, please ask your BBS operator to use our original ZIP files in the future—they have a better chance of being virus-free.

We upload to these BBSs ourselves, so they definitely carry current versions:

<u>Name</u>	<u>Location</u>	<u>Access #</u>
MIDI-IT!	Portland, OR	503-761-9600
Sound Management	Mundelein, IL	708-949-6434

*(**MIDI-IT!** is the official BBS for **PowerJam Systems** programs. File area #70 is the **PowerJam Systems** section.)*

Finally, most BBS software has a “keyword” search of some kind. You should be able to search for “CanvasMan”, “Christmas”, “Advent”, “PowerJam”, etc. and find if the programs are there. You can always find current versions on the **PowerJam Systems BBS**, too.

BBS SysOps—Please Note:

Phil Patrick, sysop at **MIDI-IT!**, supports “magic name” file requests. To request the then-current version of **CanvasMan** or the **SongCanvas**, use the magic filenames listed below.

CanvasMan sends the current **CanvasMan** program

SongCanvas sends the current **SongCanvas** program

File requests are available 22.5 hours each day and are not case-sensitive.

PowerJam Systems Bulletin Board

See also **Getting Updates to PowerJam Systems Programs**

Overview

The sole purpose of the bulletin board system (“BBS”) is to give users at least one place where they can always find the most current copies of **PowerJam Systems** shareware and freeware—the **Rhodes Warrior**, the **SongCanvas**, **CanvasMan**, and **Advent95**. Everyone is free to check things out.

If you have purchased a retail version of one of these programs, contact either the dealer or **PowerJam Systems** directly for upgrade information—the BBS does not apply to retail versions.

Accessing the BBS

The BBS is really just a simple download site—it runs a small subset of ProComm Plus for Windows’ host mode. The modem runs at speeds up to 14.4kbps using no parity, 8 data bits and 1 stop bit (i.e., 14,400-N-8-1). The modem supports v.42 data compression and v.42bis error control, but you’re unlikely to benefit much from the compression since files are already compressed via PKZIP 2.0.

The phone number is 503-524-5820. Since we use the same telephone number for data and fax, your communication software must tell our line sharing device to route the call to the modem.

The modem routing code is **11**. Your comm software should over dial the code by appending it to the phone number; i.e., add four **11**s to the end of the number as follows:

ATD524-5820,11,11,11,11 (local)

ATD1-503-524-5820,,,11,11,11,11 (USA long distance)

You might need to experiment with the number of commas before the first **11** (e.g., one for local and three for long distance (each comma represents a short pause)). Finally, you might need to set your communications software’s timeout value to 60 seconds or more.

Files Available For Download

General

POWERJAM.EXE **PowerJam Systems** overview—Windows 3.1-based help database containing general **PowerJam Systems**

information (how to get technical support and updated programs, etc.). All help files for our Windows-based programs incorporate this file.

PowerJam Systems Programs

- ADVENT.ZIP** **Advent95**—Windows 95-based General MIDI Advent Calendar for Christmas 1995. **Shareware**. The BBS also has some supplementary files (see below) available only to registered users of **Advent95**. (The Windows 3.1 version of **Advent95** is in the file WIN31ADV.ZIP.)
- CNVSMN.ZIP** **CanvasMan**—Windows 3.1-based editor/librarian for the Sound Canvas line of GS synthesizers (supports over a dozen synths). **Shareware**.
- RHODES.ZIP** **Rhodes Warrior**—DOS-based editor/librarian for the Roland Rhodes MK-80 digital piano. **Freeware**.
- SNGCVS.ZIP** **SongCanvas**—DOS-based editor/librarian for the Sound Canvas line of GS synthesizers (supports several older Sound Canvas synths). **Freeware**.
- WIN31ADV.ZIP** **Advent95**—Windows 3.1-based General MIDI Advent Calendar for Christmas 1995. **Shareware**. The BBS also has some supplementary files (see below) available only to registered users of **Advent95**. (The Windows 95 version of **Advent95** is in the file ADVENT.ZIP.)

Supplemental Files

- AC95REG1.EXE** **Advent Registration Pack #1**—supplemental songs for **Advent95**. This file is for registered users only—it is password-protected.
- AC95REG2.EXE** **Advent Registration Pack #2**—supplemental pictures for **Advent95**. This file is for registered users only—it is password-protected.
- CANQUEST.ZIP** **CanQuest**—**CanvasMan** glossary and Sound Canvas tutorial file in Windows 3.1 help database format. **CanQuest** is copyright 1993-1994 Lodi Claessen—all rights reserved.

CMCNVRT.ZIP Converts **CanvasMan** Combos and Sounds from CM1-format to CM2-format. You will want this file if you upgrade your 'old-style' synth (e.g., SCC-1, SC-55) to a 'new-style' synth (e.g., SC-50, SC-55mkII).

Beta Test—read the **Beta Testing Note** before downloading any beta files

CMBETA.ZIP Beta test version of **CanvasMan**

Sorry, but because our bank charges us too much to process them, we can no longer accept checks drawn on banks outside of the USA. If you do not have a bank account in the United States, please send us an e-mail message (to jeff@powerjam.com) so we can respond with information on current payment options.

Ludwig van Beethoven, 1770-1827, was one of the world's greatest composers. This picture of him wearing sunglasses is a trademark of Jeff Cazal. Our other trademarks include **Rhodes Warrior**, **CanvasMan** and **Advent95**.

This picture is the official logo of the MIDI forum on the CompuServe Information Service. The MIDI forum's Windows section is the primary technical support channel for **PowerJam Systems** software. CompuServe is also the first site to receive new releases of **PowerJam** shareware applications.

If you're not yet on CompuServe, you're missing out on a powerful computing tool. Contact them at 800-848-8990 (614-457-8650 outside the USA) for more information.

Beta Testing Note: we do not show beta test files within the bulletin board's list of files. We 'hide' them because we designed the beta versions to function only for registered users of the shareware version of that program. So, for example, if you did not register the shareware version of **CanvasMan**, do not download CMBETA.ZIP—it will NOT work. For the same reason, please do not re-upload beta files to any other bulletin boards.

We will send out a broadcast on CompuServe when beta test files are available. If we are not currently beta testing a given program, its listed beta file will not be available for download. If you try to download a file that is not available, don't worry; your download attempt will simply fail harmlessly.)

PowerJam Systems is the State of Oregon business name for our music/MIDI programming, performing and consulting enterprise. On the MIDI software end, our programs include **CanvasMan**, **Advent95**, the **SongCanvas** and the **Rhodes Warrior**.

If you need to contact us, the best way is via Internet e-mail to

jeff@powerjam.com

If you wish to place an order, please make **checks** payable to “Jeff Cazel” rather than to “PowerJam Systems”. See the **order form** for complete details.

MIDI-IT! BBS—Access Instructions

The **MIDI-IT!** BBS in Portland, Oregon USA is the official BBS for **PowerJam Systems** programs. Set your modem to no parity, 8 data bits and 1 stop bit; use any carrier speed up to 28,800bps (i.e., 28.8-N-8-1); and dial 503-761-9600. When connected, follow the on-screen instructions to sign-on; this will eventually get you to the **MIDI-IT! [MAIN MENU]**. At this point, press **F** for the **[FILE MENU]** and **A** to select your **File Area**. This will display the first ~100 Areas and ask if you wish to see more. Press **Y** (so you can see everything **MIDI-IT!** has to offer). Type **70** and press **<Enter>** to select the **PowerJam Systems** File Area.

At this point the procedures become more or less standard BBS fare: press **F** to see all **PowerJam Systems** files/filenames or **D** to download a file (if you know its filename). After pressing **D**, the BBS will ask for a filename. Type it in (e.g., CNVSMN.ZIP) and press **<Enter>**. Respond as follows: AddToTagList—**Y**; ContinueSearch—**N**; Add/Delete/Clear—**<Enter>**; DownloadDescriptions—**N**. The rest of the procedures depend on your datacomm software. Good luck!

Ordering Instructions

[Print Order Form](#)

[View Order Form](#)

You can register all **PowerJam Systems** shareware programs with the attached order form. Read these instructions and then click on the [Print Order Form](#) above.

Registered shareware users can access the enhanced features of and download free updates to the program(s). And finally, your “please register” screen will go away.

You must register to legally continue using a shareware program. However, as shown on the order form, buying the disk and manual are optional.

CompuServe users can register **CanvasMan** and/or **Advent96** online. The charge for the program will show up on your next CompuServe billing statement. Type **GO CIS:SWREG <Enter>** and follow the instructions. **CanvasMan** is program #660; **Advent96** is #4329. *If we receive a registration for an Advent program after February 1, we will apply it to that year's program; e.g., if we receive a request for **Advent98** on February 3, 1999, we will register the user for **Advent99**, not for **Advent98**. Please let us know if you disagree with this policy—however, we do not anticipate many registrations between January 1 and October 1. Note also that registered users of the prior year's Advent program can register the current year's program for half-price (and for 1996 only, users of **Advent94** can also register for half-price since we did not properly document this in 1995).*

Important Electronic Mail Note: if you don't register via CompuServe SWREG but you do have an Internet e-mail address (e.g., via CompuServe, Prodigy, America Online, or the ‘real’ Internet, etc.), please include it on the order form. This will allow me to electronically send your Registration Information, getting you up and running as quickly as possible with the enhanced version.

Print this form, fill it in and send your check (drawn on a US bank and payable in US dollars) to:

Jeff Cazel
13265 SW Cottontail
Beaverton, OR 97008-8077 USA

January 1996

Your Name: _____
Address: _____

City/State/ZIP: _____
Country: _____
Internet Address: _____

<u>Quantity</u>	Shareware Registration	Total
_____	Each CanvasMan (Windows 3.1 / Win95 GS Editor/Librarian)	\$59 _____
_____	Advent96 (Windows 95 General MIDI Advent Calendar for Christmas 1996)	\$20 _____
_____	Advent96 (discounted for registered users of Advent94 or Advent95)	\$10 _____
_____	CanvasMan and CanvasMan User's Guide	\$64 _____
_____	CanvasMan and current version on 3½" diskette	\$64 _____
_____	CanvasMan and current 3½" diskette and CanvasMan User's Guide	\$69 _____
_____	Advent96 and current 3½" diskette	\$25 _____
_____	Advent96 and current 3½" diskette for registered Advent95/94 users	\$15 _____
	Foreign orders please add \$10 for shipping if ordering a disk or manual:	\$10 _____
	Grand Total Enclosed	_____

Send your check (drawn on a US bank and payable in US dollars). Thank you!

Where did you get your shareware copy and what improvements would you like?
Please be as specific as possible:

