

Contents

How Tos

Special Features

Windows

Dialog Boxes

Menus

Copyright Message

Dialog Boxes

[New Activity Log Dialog Box](#)

[Export Log Dialog Box](#)

[Activity Stopped Dialog Box](#)

[Enter New Activity Dialog Box](#)

[Activity Log Information Dialog Box](#)

[About Dialog Box](#)

Windows

Main Application Window

List / Edit Window

Menus

Main Window Menu

List / Edit Window Menu

How Tos

[Creating New Activity Logs](#)

[Creating Activities](#)

[Importing Activity Log into Word 6](#)

[Entering Valid Dates](#)

[Entering Valid Times](#)

Copyright Message

Activity Log is Copyright Swamp Tech, 1995

Swamp Tech is a Trade Mark of Mathew Dredge.

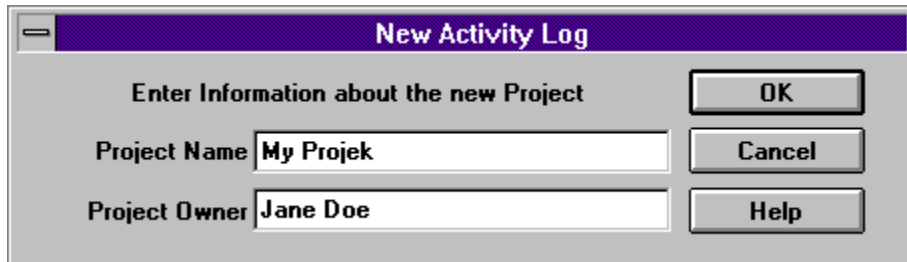
New Activity Log Dialog Box

This dialog box is for entering in information about the project.

The information needed:

Project Name: The name of the project that the activity log is for.

Project Owner: The name of the person who the activity log is for.



Enter Information about the new Project

Project Name

Project Owner

OK

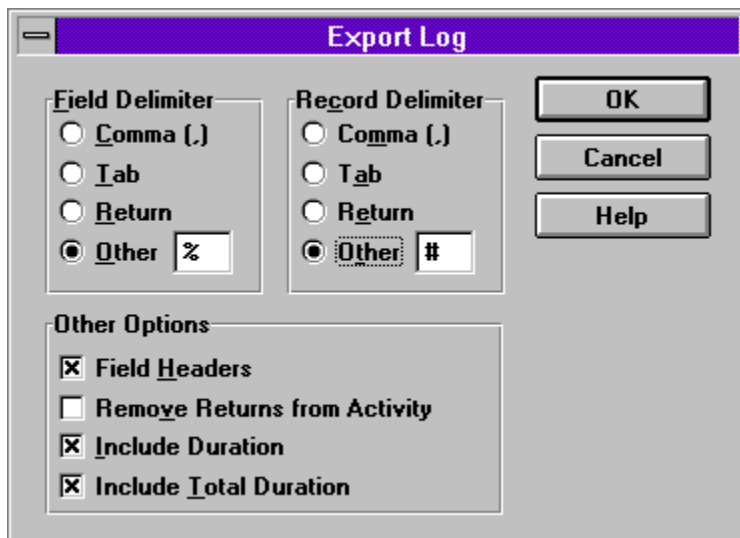
Cancel

Help

Click on an object in the dialog picture above for a description.

Export Log Dialog Box

This dialog box is for setting options for the exported log file.



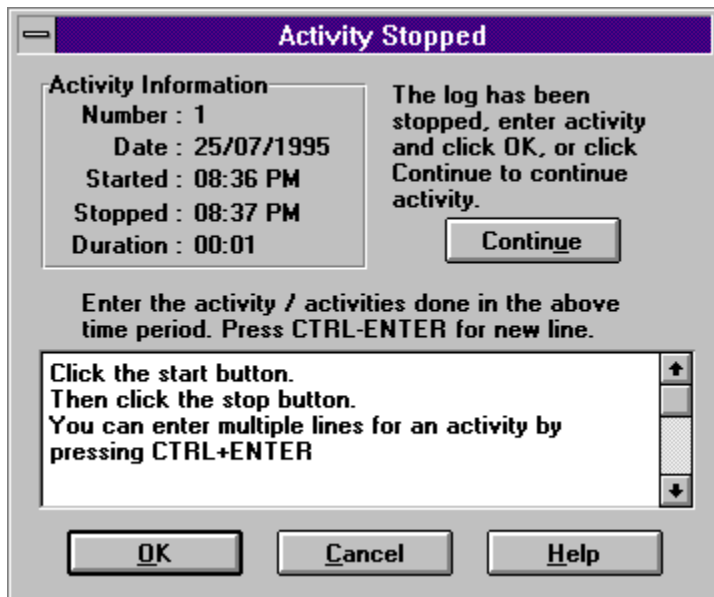
Click on an object in the dialog picture above for a description.

See [Importing Activity Log into Word 6](#) to see how to import the exported file into Word 6.

Activity Stopped Dialog Box

This dialog appears when an activity has been stopped, It shows the start and stop times of the activity and the date. The duration of the activity is calculated and shown. If the *Cancel* Button is clicked the activity is not saved. If the *Continue* Button is clicked the activity will continue and anything entered into the *Activity Edit* is lost.

Enter what was done in the time period into the *Activity Edit* area.



Click on an object in the dialog picture above for a description.

Enter New Activity Dialog Box

This dialog is for entering activities that have taken place away from the Activity Log program, you enter the date, start time, stop time and the activity. The date and times entered are subject to validation and various error messages will appear when the *Ok* Button is clicked. If a validation error has occurred then a error message will appear. See [Entering Valid Dates](#) and [Entering Valid Times](#) for information about valid dates / times and examples of the error messages. After a validation error message the offending part of the date or time will be selected allowing immediate correction.

Note: It is recommended that after entering a number of activities to sort the log, especially before exporting.

Enter New Activity

Activity Information

Number : 102

Date : 24/07/1995

Activity Started : 08:15 AM

Activity Stopped : 12:02 PM

Enter information for a new activity entry.
Enter date in format dd/mm/yyyy.
Enter time in format hh:mm:AM.

Enter the activity / activities done in the above time period. Press CTRL-ENTER for new line.

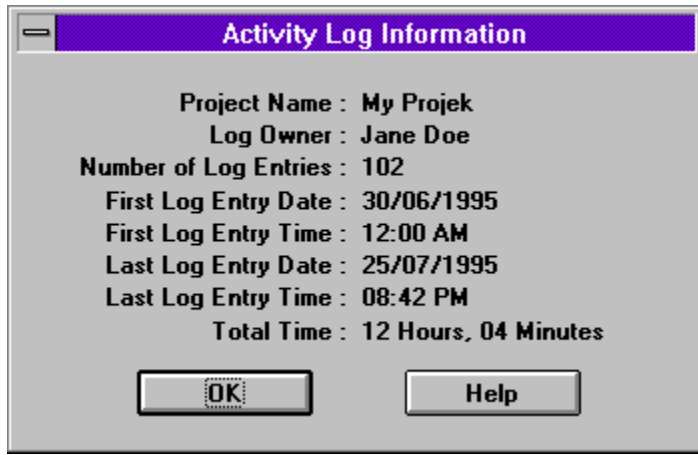
Wrote Lots of boring letters to boring people

OK Cancel Help

Click on an object in the dialog picture above for a description.

Activity Log Information Dialog Box

This dialog displays information about the activity log.

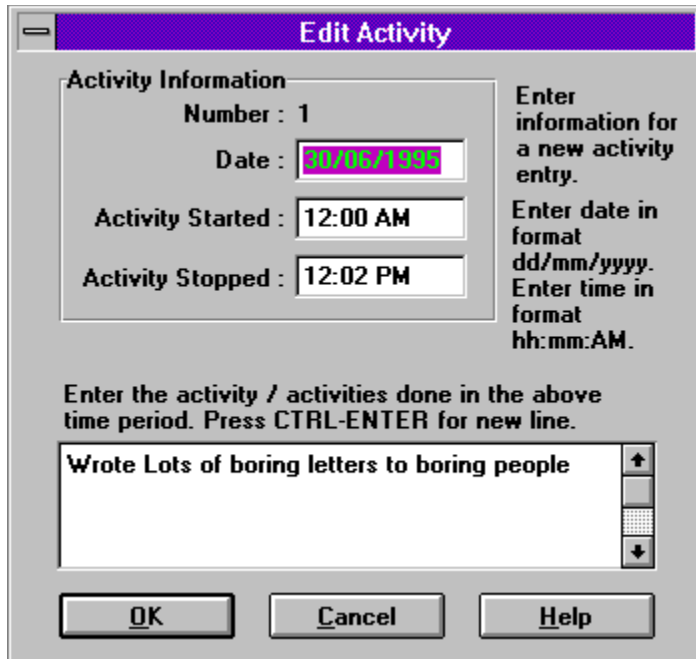


Click on an object in the dialog picture above for a description.

Edit Activity Dialog Box

This dialog is for editing activities you can edit the date, start time, stop time and the activity. The date and times entered are subject to validation and various error messages will appear when the *Ok* Button is clicked. If a validation error has occurred then a error message will appear. See [Entering Valid Dates](#) and [Entering Valid Times](#) for information about valid dates / times and examples of the error messages. After a validation error message the offending part of the date or time will be selected allowing immediate correction.

Note: It is recommended that after entering a number of activities to sort the log, especially before exporting.



Edit Activity

Activity Information

Number : 1

Date : 01/05/1995

Activity Started : 12:00 AM

Activity Stopped : 12:02 PM

Enter information for a new activity entry.

Enter date in format dd/mm/yyyy.

Enter time in format hh:mm:AM.

Enter the activity / activities done in the above time period. Press CTRL-ENTER for new line.

Wrote Lots of boring letters to boring people

OK Cancel Help

Click on an object in the dialog picture above for a description.

About Dialog Box

This dialog box shows various irrelevant pieces of information about the program, version information e.t.c.



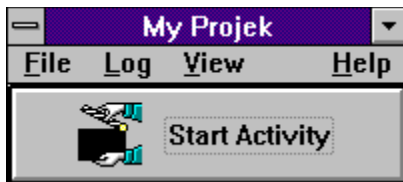
Main Application Window

The main window of Activity Log, is where it all happens. You can initiate all the functions of the activity log from here.

When Activity Log Application has just started it would look like this...



When an Activity Log has been opened the caption on the window changes and the window will look like this...



When an activity is being logged the button changes its look and the window will look like this...



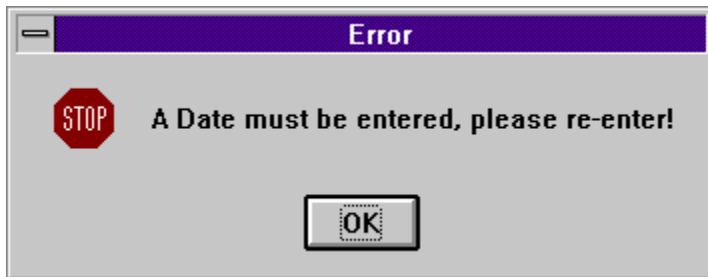
Click on an object in the window pictures above for a description.

Entering Valid Dates

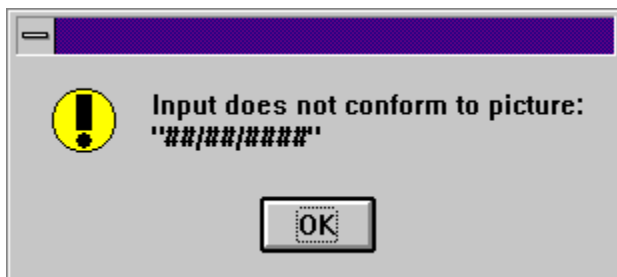
Dates when entered, must be a correct date. The program handles validation of the dates to make sure they are of a correct format. Dates are entered in the day/month/year numerical format. That means that the date must be entered as 23/07/1995. When entering dates the / character is automatically entered for you. When the *Ok* Button is pressed in the dialog, the date is validated and if there is a problem you will be notified and the offending part of the date is selected ready for reentering. Valid dates must follow some rules, these are:

Date must be entered and include all digits.
Year 1994 to 2000 inclusive.
Month 01 to 12 (Leading 0 must be typed).
Day 01 to Number of days in the month.

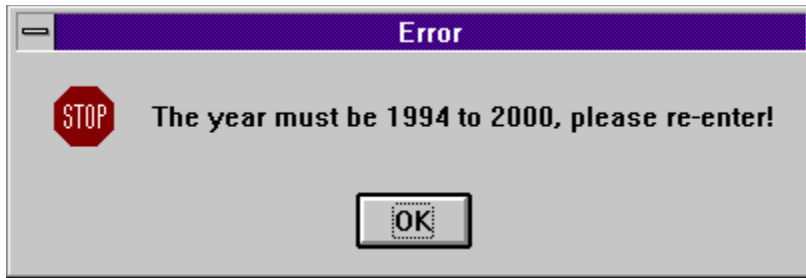
The error messages are as follows:



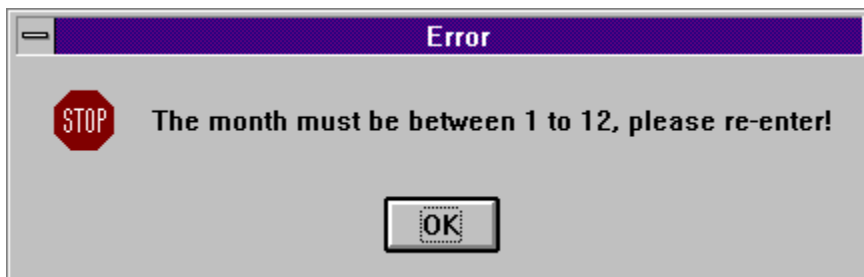
This message is shown when no date has been entered, The cursor will be placed ready to enter a date.



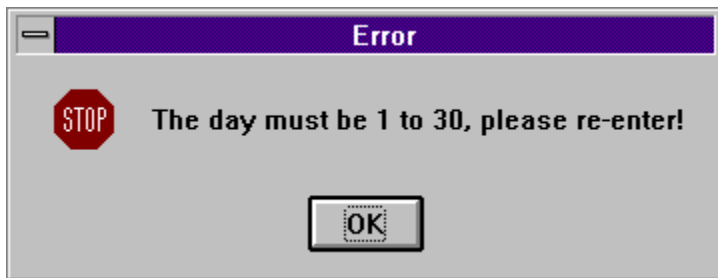
These two messages are shown when the date is not completely entered, The entire date will be selected allowing editing.



This message is shown when the year is out of range, The year will be selected allowing editing.



This message is shown when the month is out of range, The month will be selected allowing editing.



This message is shown when the day is out of range, The day will be selected allowing editing.

Entering Valid Times

Times when entered, must be a correct time. The program handles validation of the times to make sure they are of a correct format. Times are entered in the hour:minute am format. That means that the time must be entered as 10:15 AM. When entering dates the :, and M of PM & AM characters are automatically entered for you. When the *Ok* Button is pressed in the dialog, the time is validated and if there is a problem you will be notified and the offending part of the time is selected ready for reentering. Valid times must follow some rules, these are:

- Time must be entered and include all digits.
- Last letters AM or PM
- Hour 01 to 12 (Leading 0 must be typed).
- Minute 00 to 59 inclusive. (Leading 0 must be typed for minutes < 10).
- Start Time must be before the Stop Time.

Remember that 12:00 PM is noon midday, and 12:00 AM is midnight.

The error messages are as follows, the actual program may replace start time with stop time :



This message is shown when no time has been entered, The cursor will be placed ready to enter a time.

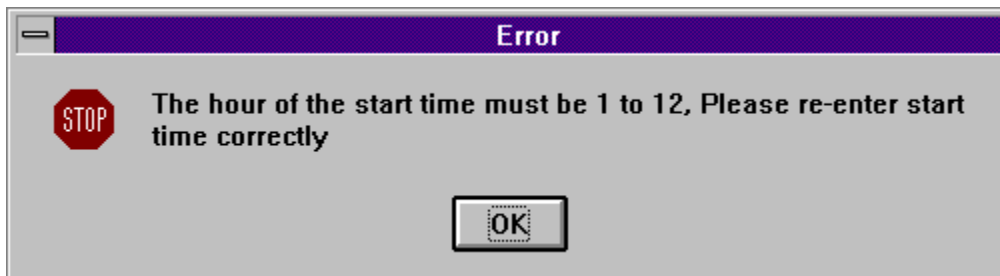


These two messages are shown when the time is not completely entered, The entire time

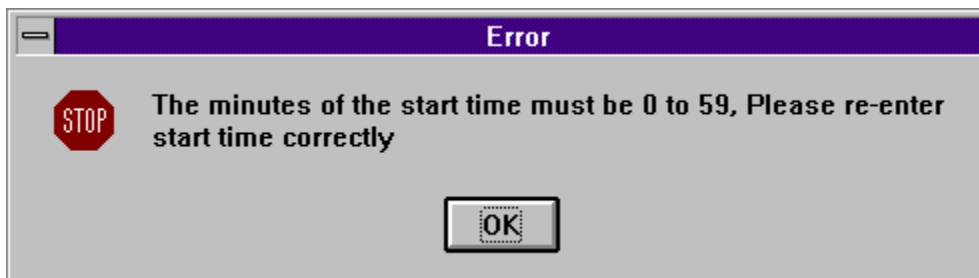
will be selected allowing editing.



This message is shown when AM or PM is not entered correctly, The offending letters will be selected allowing editing.



This message is shown when the hour is out of range, The hour will be selected allowing editing.



This message is shown when the minute is out of range, The minute will be selected allowing editing.



This message is shown when the start time is after the stop time, The start time will be selected allowing editing.

Main Window Menus

These are the menus from the main window, some of the items may be disabled at various points in time. Click on a item in the menu for an description:

File Menu

<u>N</u> ew...	
<u>O</u> pen...	Ctrl+O
Sa <u>v</u> e a <u>s</u> ...	
<u>C</u> lose	
<u>E</u> xport...	
<u>E</u> xit	Ctrl+X

Log Menu

<u>S</u> tart Activity	Enter
<u>E</u> nter New...	Insert
<u>S</u> ort	

<u>S</u> top Activity...	Enter
<u>E</u> nter New...	Insert
<u>S</u> ort	

View Menu

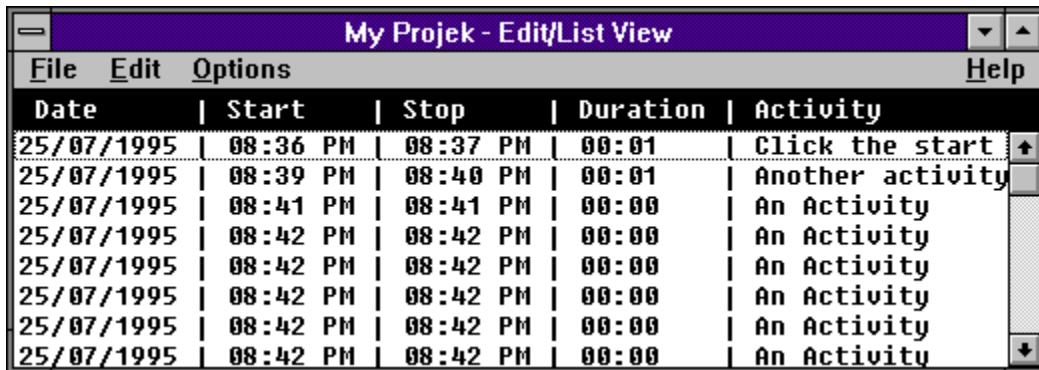
<u>L</u> ist / Edit...	Ctrl+L
<u>I</u> nformation...	Ctrl+I

Help Menu

<u>C</u> ontents	F1
<u>H</u> ow To's	
<u>W</u> indows	
<u>D</u> ialog Boxes	
<u>M</u> enus	
<u>A</u> bout...	

List / Edit Window

This window is accessible using the View-> List / Edit menu option from the main window or by using the CTRL+L key combination. This view lets you preview the Activity Log and edit, add, delete activities. After a change is made to the log, the log file is saved. This is for compatibility with how the main window handles the files. The Main Window can be used when this window is open. The Activity description text is concatenated to the first 50 characters or the first line, if the text is concatenated it will be followed by three periods.



The screenshot shows a window titled "My Projek - Edit/List View" with a menu bar containing "File", "Edit", "Options", and "Help". The main area displays a table with the following columns: "Date", "Start", "Stop", "Duration", and "Activity". The table contains eight rows of activity log entries.

Date	Start	Stop	Duration	Activity
25/07/1995	08:36 PM	08:37 PM	00:01	Click the start
25/07/1995	08:39 PM	08:40 PM	00:01	Another activity
25/07/1995	08:41 PM	08:41 PM	00:00	An Activity
25/07/1995	08:42 PM	08:42 PM	00:00	An Activity
25/07/1995	08:42 PM	08:42 PM	00:00	An Activity
25/07/1995	08:42 PM	08:42 PM	00:00	An Activity
25/07/1995	08:42 PM	08:42 PM	00:00	An Activity
25/07/1995	08:42 PM	08:42 PM	00:00	An Activity

Click on a part of the window picture above for a description.

List / Edit Window Menus

These are the menus from the list / edit window, some of the items may be disabled at various points in time. Click on a item in the menu for an description:

File

Close

Edit

Edit Selected Activity Enter	
A dd New Activity	I nsert
D elete Selection	D elete

Options

<input checked="" type="checkbox"/> S how Duration
<input checked="" type="checkbox"/> S how H eaders
<input checked="" type="checkbox"/> D elete Confirm

Help

C ontents F1
H ow To's
W indows
D ialog Boxes
M enus
A bout...

Creating New Activity Logs

There is 3 steps to creating an Activity Log:

- 1) Select File-New from the Main Window Menu. (Remember to close the List / Edit Window if it is open).
- 2) Enter Project Name and the Project Owner into the New Activity Log Dialog Box and then click the *Ok* Button.
- 3) Enter a filename into the File Open Dialog Box, Activity Logs have the extension of ALG, it is not required to enter this. Then click the *Ok* Button.

The Activity Log is now created, see Creating Activities for information about creating activities.

Creating Activities

If you have not yet created an Activity Log, see [Creating New Activity Logs](#).

There is 3 steps to creating an activity.

- 1) Click the Start Activity Button, Press ENTER or select Log->Start Activity from the Main Window Menu when you are to start doing something.
- 2) Click the Stop Activity Button, Press ENTER or select Log->Stop Activity from the Main Window Menu when you have finished what you were doing. The [Stop Activity Dialog Box](#) appears.
- 3) Enter what you did into the activity edit. Then click the *Ok* Button.

If you have accidentally stopped the activity, you can continue the activity by clicking the *Continue* button.

If you do not want the activity to be logged for any reason, stop the activity and click the *Cancel* Button.

Activities can be entered from scratch using one of the Enter New Activity menu options, this will show the [Enter New Activity Dialog Box](#) where you can enter the details about the activity.

See [Special Features](#) for more information about how activities are handled.

Special Features

There are a number of features in the Activity Log Program, these are:

- When the program is started, the last activity log is re-opened, if no activity log was open when the program was quit, then no log is loaded.

- When a Activity Log is closed, or the program is quit and an activity was being logged, then when that file is re-opened or the program is re-started that activity is continued. This allows you to turn the computer off / quit to dos e.t.c to work and when you come back you can continue the activity.

Note: An activity cannot span days, if this has happened, the activity is stopped at 11:59 PM of the day it was started.

- If the List / Edit Window is open and an activity was stopped or entered using the Main Mindow, the list will update automatically.

Importing Activity Log into Word 6

This is the method I use for printing an Activity Log using Word 6.

- 1) Export the Activity Log, using % for the *Field Delimiter* and # for the *Record Delimiter*.
- 2) Load Word 6 and place cursor in document where I want the log to go.
- 3) Select *Insert->Database* from the menu.
- 4) In the *Database* Dialog Box, click the *Get Data* button.
- 5) Select the exported log file in the *Open Data Source* Dialog Box.
- 6) In the *Header Record Delimiters* Dialog Box, select % as the *Field Delimiter* and # as the *Record Delimiter* and click *OK*.
- 7) In the *Database* Dialog Box click the *Table Autoformat* Button.
- 8) In the *Table Autoformat* Dialog Box, select *simple3* from the *format* list.
- 9) Click off the *First Column* check Box, under the *Apply Special Formats* to Group, then click *OK*.
- 10) In the *Database* Dialog Box, click the *Insert Data* Button.
- 11) In the *Insert Data* Dialog, click the *OK* Button..
- 12) Done..

The result of the above 12 steps will look like this:

Date	Start Time	Stop Time	Duration	Activity
01/07/1995	01:00 AM	01:00 PM	12:00	Thsa.dsa
02/07/1995	02:00 AM	03:00 AM	1:00	dfkjdfgh
25/07/1995	09:34 AM	09:35 AM	0:01	dfkf.lgd
25/07/1995	09:35 AM	09:41 AM	0:06	balh
25/07/1995	09:46 AM	09:49 AM	0:03	baah
			13:10	Total Project Duration

Ok Button

Clicking on the *Ok* Button accepts what was entered into the dialog box, or clears the dialog box if the dialog is only showing information.

Cancel Button

Clicking on the *Cancel* Button clears the dialog without accepting the data that was entered.

Help Button

Clicking in the *Help* Button shows the help for the dialog.

Activity Number

The number represents an index of the activity that is being entered / edited.

Date

The *Date* is the date that the activity has taken place.

Start Time

The *Start Time* is the time that the activity was started.

Stop Time

The *Stop Time* is the time that the activity was stopped.

Duration

The *Duration* is how long the activity has taken, the duration is in hours and minutes.

Continue Button

The *Continue Button* allows you to continue the activity if it was accidentally stopped.

Activity Edit

The *Activity Edit* allows you to enter in what was done for the activity period. You can enter multiple lines and long lines will word-wrap.

Edit Selected Activity

The *Edit Selected Activity* menu item brings up the Edit Activity Dialog Box, for the activity that was selected in the list. Pressing the Enter key does the same as using the menu item.

Add New Activity

The *Add New Activity* menu item brings up the Enter New Activity Dialog Box. You can enter details of an activity that was done without the use of this program. Pressing the Insert key does the same as using the menu item.

Delete Selection

The *Delete Selection* menu item deletes the activity that was selected in the list. Confirmation may be asked for if the Delete Confirm menu item in the Options menu is checked.

Date

The date the activity was done on can be entered or edited here. See Date Validation for information about how to enter a valid date and what any error messages might mean.

Activity Started

The time the activity started can be entered or edited here. See Time Validation for information about how to enter a valid time and what any error messages might mean.

Activity Stopped

The time that the activity stopped can be entered or edited here. See Time Validation for information about how to enter a valid time and what any error messages might mean.

New

The *New* menu option creates new Activity Logs, see [Creating Activity Logs](#) for more information.

Note: This option is disabled if the List / Edit window is open or an activity is being logged.

Open

The *Open* menu option opens existing activity log files, if an activity log is open it will be closed.

Note: This option is disabled if the List / Edit window is open or an activity is being logged.

Save As

The *Save As* menu option saves the currently loaded activity log in a new location and under a different file name.

Note: This option is disabled if the List / Edit window is open or an activity is being logged.

Close

The *Close* menu option closes the current activity log, if an activity is currently being logged the activity will be resumed the next time the activity log is opened.

Note: This option is disabled if the List / Edit window is open.

Export

The *Export* menu option exports the current activity log to a file that can be imported into a word processor or database. The Export dialog box is displayed. See Exporting Activity Logs for more information.

Note: This option is disabled if the List / Edit window is open or an activity is being logged.

Exit

The *Exit* menu option exits the program. If there is a activity log open then it is closed and if there is an activity being logged then it will resume when the file is reopened. When the program is restarted the last activity log will be reopened.

Contents

The *Contents* menu option loads the help [Contents](#) page.

How Tos

The *How Tos* option loads the help [How Tos](#) Index page.

Windows

The *Windows* option loads the help Windows Index page.

Dialog Boxes

The *Dialog Boxes* option loads the help [Dialog Boxes](#) Index page.

Menus

The *Menus* option loads the help [Menus](#) Index page.

About

The *About* menu option shows the About Dialog Box for a bit more irreverent information.

Field Delimiter

Select one of the radio buttons in this group to select what character fields will be delimited (separated) with, you should use a character that has not been entered into the activity log. For more information see Exporting Activity Logs and [Comma](#), [Tab](#), [Return](#), [Other](#).

Comma ,

Selecting this radio box uses the comma character to delimit (separate) the fields when they are exported.

Tab

Selecting this radio box uses the tab character to delimit (separate) the fields when they are exported.

Return

Selecting this radio box uses the return character to delimit (separate) the fields when they are exported.

Other

Selecting this radio box uses the character that is entered into the edit next to it to delimit (separate) the fields when they are exported. The edit will only be enabled when the Other radio is selected.

Record Delimiter

Select one of the radio buttons in this group to select what character records will be delimited (separated) with, you should use a character that has not been entered into the activity log. For more information see Exporting Activity Logs and Comma, Tab, Return, Other.

Comma ,

Selecting this radio box uses the comma character to delimit (separate) the records when they are exported.

Tab

Selecting this radio box uses the tab character to delimit (separate) the records when they are exported.

Return

Selecting this radio box uses the return character to delimit (separate) the records when they are exported.

Other

Selecting this radio box uses the character that is entered into the edit next to it to delimit (separate) the records when they are exported. The edit will only be enabled when the Other radio is selected.

Other Options

The *Other Options* group contains check boxes for turning on and off options for the export. For more information see Exporting Activity Logs and [Field Headers](#), [Remove Returns from Activity](#), [Include Duration](#), [Include Total Duration](#).

Field Headers

Selecting *Field Headers* will write the headers for each field as the first record exported to the file.

Remove Returns from Activity

Selecting *Remove Returns from Activity* will remove all returns (line breaks) from the activity fields, the returns will be replaced with a semi colon and a space ; .

Include Duration

Selecting *Include Duration* will export the duration field for each activity.

Include Total Duration

Selecting *Include Total Duration* will export the total duration of the project as the last record.

Start Activity

The *Start Activity* menu option will start a new activity, the Enter key or clicking the Start Activity will do the same as this menu option.

Stop Activity

The *Stop Activity* menu option will stop the current activity and bring up the Activity Stopped Dialog Box, the Enter key or clicking the Stop Activity will do the same as this menu option.

Enter New

The *Enter New* menu option brings up the Enter New Activity Dialog Box. You can enter details of an activity that was done without the use of this program. Pressing the Insert key does the same as using the menu item.

Sort

The *Sort* menu option sorts the activity log in the order of date then start time. Use this option if activities have been entered using the Enter New menu item, and you want to export the log.

Main Windows Caption

The caption will show Activity Log if there is no activity log opened, otherwise the name of the project will be displayed.

Main Window Menu
See Main Window Menus.

Start Activity Button

Click the *Start Activity* button to start a new activity, the Enter key or the Start Activity menu item will do the same as clicking the button.

Stop Activity Button

Click the *Stop Activity* button to stop the current activity and bring up the Activity Stopped Dialog Box, the Enter key or the Stop Activity menu item will do the same as clicking the button.

Project Name

Enter the name of the project that the activity log is for in this edit.

Project Owner

Enter the name of the person who is keeping the activity log in this edit.

List / Edit

The *List / Edit* menu item displays a list window that can be used to view and edit the activity log. See [List / Edit Window](#) for more information, pressing CTRL+L is the same as using this menu option.

Information

The *Information* menu item displays the Activity Log Information Dialog Box.

Show Duration

Checking the *Show Duration* menu item shows the durations of the activities in the List / Edit Window.

Show Headers

Checking the *Show Headers* menu item shows the field headers in the window.

Delete Confirm

Checking the *Delete Confirm* menu item sets confirmation when activities are deleted.

Project Name

This is the name of the project that the activity log is being kept for.

Log Owner

This is the name of the person who is keeping the activity log.

First Log Entry Date

This is the date of the first activity in the log.

First Log Entry Time

This is the start time of the first activity in the log.

Last Log Entry Date

This is the date of the last entry in the activity log.

Last Log Entry Time

This is the stop time of the last entry in the activity log.

Total Time

This is the total time (duration) the activity has taken.

List / Edit Window Caption

This caption shows the Project Name of the activity log.

List / Edit Window Menu
See List / Edit Window Menus

List / Edit Window Headers

This is the field headers for the list, this can be turned on and off using the [Show Headers](#) menu item.

Date Field

This shows the date of the activities.

Start Field

This shows the start time of the activities.

Stop Field

This shows the stop time of the activities.

Duration Field

This shows the duration of the activities, this can be turned on and off using the Show Duration menu item.

Activity Field

This shows part of the activity text for the activities. The first fifty characters of the first line is shown, or only the first line. If the activity is truncated three periods are shown (...).

