

Graphix Park™

A drag & drop image converter.
© Copyright 1994 Ward Technologies Inc. All rights reserved.
SHAREWARE

If you find yourself in the imaging loop of Open, Look, Convert and Save all through a maze of menus, then Graphix Park is for you.

Why?

Purchasing

CompuServe Registration

Usage

Toolbar

Preview Option

Setup

Supported Image File Formats

Bonus True Type Fonts

WARDTechnologies Inc.

11468 Blackfoot Street Northwest
Coon Rapids, MN. 55433
CompuServe Mail: 71062,3212
Voice: 612-427-9336

No part of this manual may be copied, reproduced, translated or transmitted in any form by any means for any purpose without the express written permission of Ward Technologies Inc.

INFORMATION CONTAINED IN THIS MANUAL IS SUBJECT TO REVISION AND ALTERATION WITHOUT NOTICE AND DOES NOT REPRESENT AN OBLIGATION OF ANY SORT ON THE PART

OF WARD TECHNOLOGIES INC.

Microsoft®, and MS-DOS® are registered trademarks and Windows is a trademark of Microsoft Corporation. IBM®, and PC AT® are registered trademarks and Personal System/2 is a trademark of International Business Machines. All other products are trademarks or registered trademarks of their respective owners.

Usage

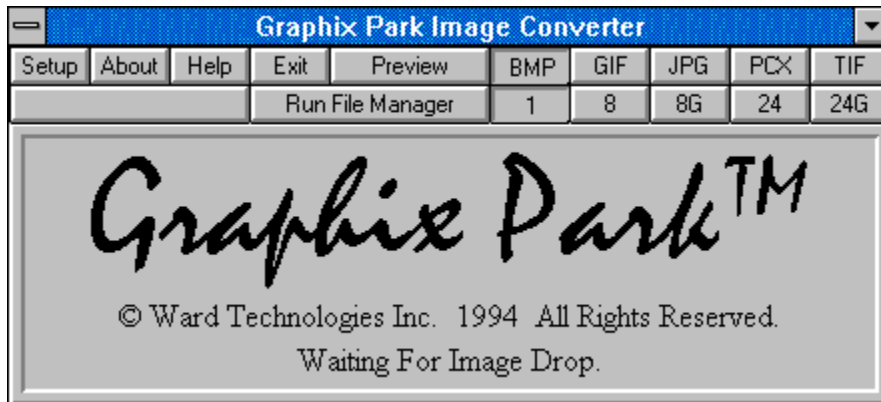
Graphix Park™

Is Simple.

Select an output directory.

Select the output format.

Then, with your pointing device, select one or more supported image files from the File Manager drag them over the Graphix Park client area and drop them. Graphix Park will place them in a Q, convert them, one at a time, to the current output format and place them in the current output directory.



Normal Mode.

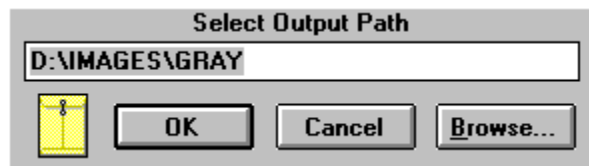
[Return](#)

Setup

Graphix Park™

needs to know where to put the new converts when it has finished processing them.

To setup an appropriate path to store your new images in, select [Setup](#) from the Main Toolbar and the dialog below will appear.



Enter the desired path, if the path does not exist a prompt will appear and query for creation rights. If you wish press the [Browse](#) button and traverse the directory tree and select the desired path.

Note: If the input and output path are identical the output supersedes the input and the input will be overwritten.

[Return](#)

Purchasing

Index

Select "File-Print Topic" from the menu bar to print this form.

You can order from **Ward Technologies Inc.**
by payment with check.

Graphix Park™

Version 1.0.0a

NAME _____
COMPANY _____
STREET _____
STREET _____
CITY _____
STATE _____ ZIP _____
COUNTRY _____
TELEPHONE NUMBER _____

Disk Size preferred 3.5" _____ 5.25" _____

Graphix Park™

Version 1.0.0a \$25.00 _____ ea.
Shipping/Handling
US or Canada \$ 5.00 _____
Outside of US or Canada \$14.50 _____

bonus
WT True Type Fonts (s&h included) \$ 1.25 _____ ea.

MN residents add 6.5% sales tax _____

Total in US Funds drawn on a US Bank _____

Make checks payable to: Ward Technologies Inc.

Mail to:

Ward Technologies Inc.

11468 Blackfoot Street Northwest
Coon Rapids, MN 55433
USA

Supported Image File Formats

The following image file formats are supported:

BMP
GIF
JPG
PCX
TGA
TIF

[Return](#)

Browse

During Setup **Graphix Park™** allows direct directory traversal when selecting an output path for converted images.



Return

Toolbar

Graphix Park™

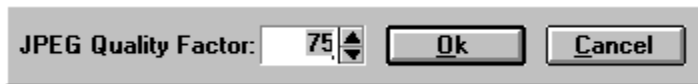
The toolbar for Graphix Park™ is separated into two sections.

The first section functions as a menu, allowing access to the [setup screen](#), about dialog, [preview mode](#) and this help system.

The second section is use to determine the [output format](#) and the [color depth](#) for storing the image.

Setup	About	Help	Exit	Preview	BMP	GIF	JPG	PCX	TIF
Run File Manager				1	8	8G	24	24G	

The JPG (JPEG) output switch has one additional hidden feature. Holding the CONTROL key down when selecting this button will activate the quality factor dialog.



The JPEG format is "lossy" in that not all of the information contained in the image is retained.

Depending on the quality factor, more or less image information is retained. This makes possible excellent compression ratios, often 10:1 without much apparent loss of image quality.

The quality factor range is 1 to 100. A quality factor of 100 retains the most image data. A quality factor of 75 is the default and produces and excellent images often indistinguishable from the original with substantial file size reduction.

[Return](#)

Bonus True Type Fonts

As a bonus to any **Graphix Park™** user, Ward

Technologies Inc. has included and installed the three high quality True Type Fonts listed below. You may use them at no charge if you purchase Graphix Park™. If you do not purchase Graphix Park you may use them for 30 days. If after 30 days you continue to use them you must purchase them.

WT Plazzic

WT Plazzic Bold

WT Mist

[Return](#)

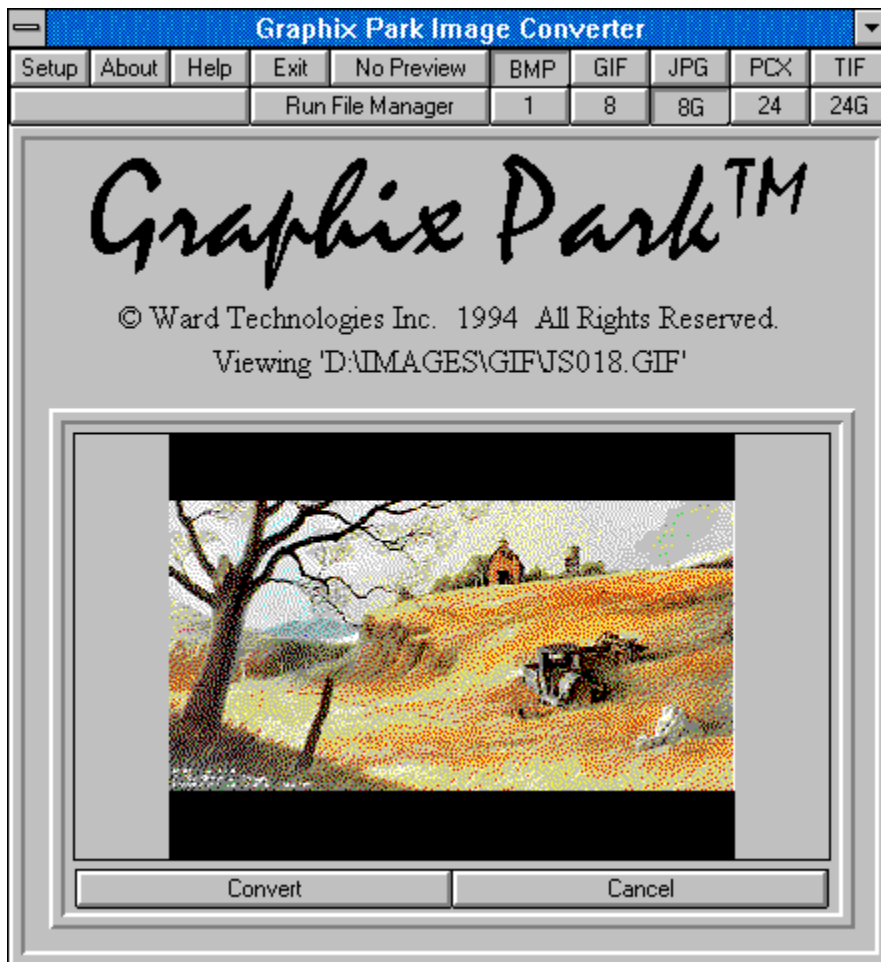
Preview Mode

Graphix Park™ preview mode is activated and deactivated with the same button. By selecting the Preview button when in Normal Mode the Graphix Park window will grow downward and reveal a preview area.

The preview area allows the user to thumbnailishly examine any supported image and decide whether to stored or discarded it.

Pressing the Convert button will convert the viewed image and store it in the current selected output format, discard the image from the image Q and display the next image in the Q.

Pressing the Cancel button will delete the image from the image Q. If the image Q contains other images the next image in the Q will display in the preview window.



Preview Mode.

To return to Normal Mode press the No Preview button on the Main Toolbar.

Return

Bit Depth

Different image file formats are capable of holding different quantities of colors. Each file format will have a reference to the number of bits-per-pixel that the format is capable of supporting.

1 refers to an image with up to 2 colors.

8 refers to an image with up to 256 colors.

8G refers to an image with up to 256 grays levels.

24 refers to an image with up to 16,777,216 colors.

24G refers to an image with up to 16,777,216 colors all of which are gray so there is really only 256 gray levels.

Preview Convert Button

Pressing the **Convert** button will convert the viewed image and store it in the current selected output format, discard the image from the image Q and display the next image in the Q.

Preview Cancel Button

Pressing the [Cancel](#) button will delete the image from the image Q. If the image Q contains other images the next image in the Q will display in the preview window.

Image Q

A place holder for the dragged and dropped image file names.

Run File Manager

Graphix Park™

Is NOT Freeware. You may use it for 30 days. If after 30 days you would like to continue using Graphix Park then you must purchase a licensed version. To obtain information about Graphix Park press the HELP button and select 'Purchasing'.
To continue, click the left mouse button.

Why?

We have quit a few requests for products that remove the redundant aspects of computing. DTP, MultiMedia and Computer Artists ask for a program that converts graphics formats and color depths and puts them in a specific directory with out having to traverse a menu for each load/convert/color-depth-change/save sequence.

When we do a projects we want to keep all the bits and pieces together including the images. we want the images converted to a particular format and color depth, put in the current project directory and we want it done quickly. This gives us easy access to the images and enables easy archival of the whole lot.

Graphix Park™ is our solution.

CompuServe Registration

Register **Graphix Park™** **Version 1.0.0a** though
CompuServe Shareware Registration Forum.

Just Type "GO SWREG" and register product #3333

It is only \$25.00 to register!

