

Yahtsee - Contents

[How To Play](#)

Windows and Dialog Boxes

[Main Window](#)

[New Game Dialog Box](#)

[Players Dialog Box](#)

[Series Summary Dialog Box](#)

[Scoresheet Print Preview](#)

[Options Dialog Box](#)

[Player Statistics Dialog Box](#)

[Shortcut Keys](#)

[Contact Information](#)

Yahtsee - Overview

Yahtsee is a computerized version of the popular dice game, Yahtzee. Yahtsee can be played by up to six players. Players can be human or computer-controlled. The winner is the player who scores the most point in a series of up to six games.

Starting a New Series Of Games

To start a new series of games, select **New Game** from the **Game menu**. The New Game dialog box will appear. Select the players who will play the game. If a player is playing for the first time, click on the **Players** button to bring up the Players dialog box and add the new player. Once the players are selected, click the **Ok** button to start the game.

If more than one player is playing, each player will roll the dice once to determine the order of play for the first game in the series. The order is determined by the sum of all five dice, with the player rolling the highest score going first. The order of play for subsequent games is determined by the previous games scores with the highest score going first.

Playing The Game

A player's turn begins with the player rolling all five dice. The player can then, if desired, re-roll any or all the dice twice more before selecting a scoring category. However, a score can be entered after the first, second or third roll. See the Main Window topics for information on how to select and roll the dice. Players score in the following manner. Each of the thirteen categories has a rule for scoring. They are:

Upper section

Aces -	Sum of all 'Ones'.
Twos -	Sum of all 'Twos'.
Threes -	Sum of all 'Threes'.
Fours -	Sum of all 'Fours'.
Fives -	Sum of all 'Fives'.
Sixes -	Sum of all 'Sixes'.

If the total for the upper section is 63 or more, a 35 point bonus is added.

Lower section

3 Of A Kind -	If you have 3 of a kind, you sum all dice.
4 Of A Kind -	If you have 4 of a kind, you sum all dice.
Full House -	If you have 3 of one dice and 2 of another, score 25 points.
Small Straight -	If you have a sequence of 4 dice, score 30 points.
Large Straight -	If you have a sequence of 5 dice, score 40 points.
Yahtsee -	If you have 5 of a kind, score 50 points.
Chance -	Sum of all dice.

After each turn, a player must choose one of these categories, even if it scores a zero. A score can be entered by clicking the **Score** button and using the Score dialog box or by double-clicking the location on the scoresheet where you want the score to be entered. If the score is entered on the wrong line, click the **Undo** button to erase the score. The **Undo** button will be active for a couple of seconds after the score is entered.

The computer will show the possible scoring choices, if the **Possibilities** button is clicked. The game continues until all categories are filled. The scoring ends after the selected number of games (up to six) are completed. The player with the highest point total is the winner.

If during a game, a second Yahtsee is rolled and the first Yahtsee was scored as a Yahtsee, then the player receives a bonus of 100 points. In addition, if the appropriate row in upper section is filled, the Yahtsee can be used as a wild card for Full House, Small Straight or Large Straight.

Final Notes

To receive help on a window or dialog box, press F1.

The screen shots in this help file are for the 32-bit version. The 16-bit version may vary slightly. However, both version contain all of the features described.

Yahtzee - Shortcut Keys

Key(s) Action

- 1 - 5 Toggle select of dice for re-roll.
- R Roll/Re-roll dice.
- S Score current dice.
- P Show possible scores.
- U Undo the last score entered.
- F1 Show on-line help for the selected control.

Yahtsee - Contact Information

This version of Yahtsee is provided as freeware. Feel free to distribute it.

If there are any questions, comments, bug reports, etc., you can send e-mail to the author, Cary Stone, at 70314.1677@compuserve.com.

Upper Section

Aces through Sixes

Score the total of all the dice showing the specified value. (i.e. If you roll 3 fives, a one and a three, you could score 1 in **Aces**, 3 in **Threes**, 15 in **Fives**, or zero in **Twos**, **Fours** or **Sixes**).

Total

The total of the **Aces** through **Sixes** entries.

Upper Bonus

If the Total is 63 or more, a 35 point bonus is awarded. Three of each of the six values give you a total of 63.

Upper Total

Total for the upper section including the bonus.

Lower Section

3 Of A Kind

If you roll 3 or more of the same value, score the total of all five dice.

4 Of A Kind

If you roll 4 or more of the same value, score the total of all five dice.

Full House

If have three dice showing one value and the two other dice showing a pair of a second value, score 25 points.

Small Straight

If you roll a sequence of four consecutive value (i.e. 1 2 3 4, etc.), score 30 points.

Large Straight

If you roll a sequence of five consecutive value, score 40 points.

Yahtsee

If you roll 5 of the same value, score 50 points.

Chance

Score the total of all five dice.

Lower Total

The total of the **3 Of A Kind** through **Chance** entries.

If the dice do not show the require pattern, a zero is scored on the selected line.

Totals Section**Game Total**

The total score for the upper and lower sections.

Yahtsee Bonus

After one Yahtsee is scored, each additional Yahtsee is worth a 100 point bonus. If the line in the upper section corresponding to the value of the dice has been filled, the Yahtsee can be used to score a Full House, Small Straight or Large Straight.

Grand Total

The total of the upper section, lower section and Yahtsee bonus.

Shows the name of the player whose scores are shown on the scoresheet. After each turn, the selected player is automatically switch to the player who is next to roll. The message to the right will indicate the player currently rolling, if it is different from the selected player.

These represent the five rolled dice values. After the first or second roll, you can re-roll one or more dice. Whether the player selects the dice to re-roll or the dice to keep depends on how Yahtzee is configured (see [Options dialog box](#)).

To select a die, click on the die with the mouse or type the number corresponding to the position of the die. The number **1** corresponds to the top die and **5** corresponds to the bottom die. Clicking the mouse or typing the number again will toggle the selection off. Once the dice are selected, click on the **Roll** button to re-roll the dice.

Click on this button to roll or re-roll the dice.

Click on this button to see the [Score Dialog Box](#). To select which line to score, either double-click on the selection or select the line and click on the **Score** button. You can also select the line to score by double-clicking on the scoresheet on desired line in the column for the current game.

Click on this button to show all of the possible scores for the current roll. The scores will be shown in italics on the scoresheet. Clicking a second time turn the scores off.

Click this button to erase the last entered score. Once the score is erased, either enter a score on another line or re-roll the dice (if less than three rolls have been taken).

Player Statistics

Shows the Player Statistics dialog box. Many statistics including high and low game and scoring percentages are shown.

Help Topics

Shows this help file.

About

Shows a dialog box with various program information.

Click this button to enter the score on the selected line.

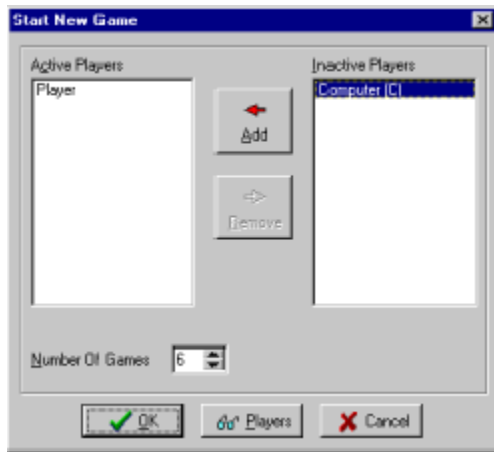
This list shows the players for the next game. Up to 6 players can be play at one time.

To add a player to this list either double-click on the player in the **Inactive Players** list or select the player in the **Inactive Players** list and click the **Add** Button.

To remove a player either double-click on the player or select the player and click the **Remove** button.

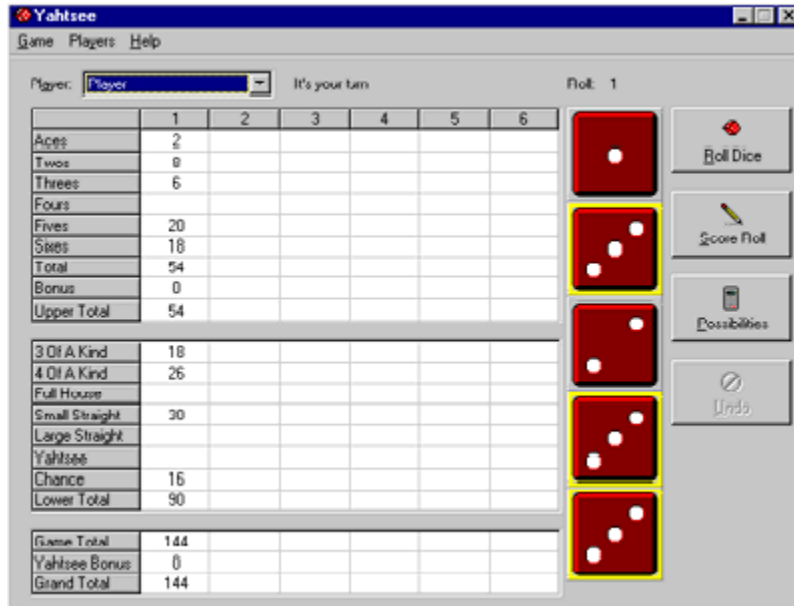
Yahtzee - New Game Dialog

You start a new game from this dialog box. Click on any control shown below to show a description of its function.



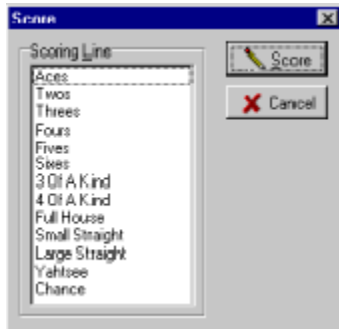
Yahtzee - Main Window

You play the game of Yahtzee from this window. Click on any control shown below to show a description of its function.



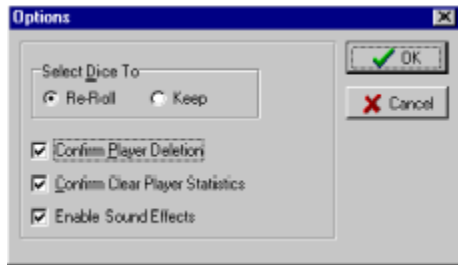
Yahtzee - Score Dialog

Select where to enter a score from this dialog box. Click on any control shown below to show a description of its function.



Options Dialog

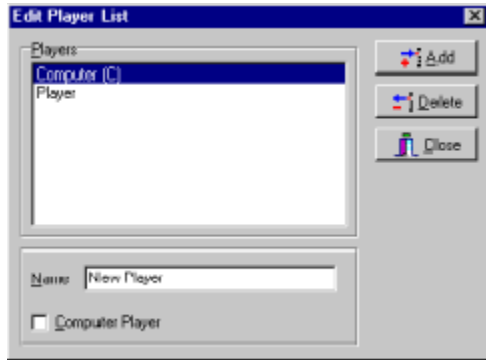
You can change program options from this dialog box. Click on any control shown below to show a description of its function.



This option determines how selected dice are interpreted when a player rolls for the second or third time. If **Re-Roll** is selected, the only selected dice will be rolled. If **Keep** is selected, the dice which are not selected will be rolled.

Yahtzee - Player Dialog

Edit the list of available players from this dialog box. Click on any control shown below to show a description of its function.



Shows a list of all available players. The name of a computer player is followed by **(C)**.

Yahtzee - Print Preview

Shows a preview of the printout of all the scoresheets for the current series of games. Click on any control shown below to show a description of its function.

Yahtzee Score Sheets - Page 1 of 1

Zoom Full Page < Previous > Next Print Close

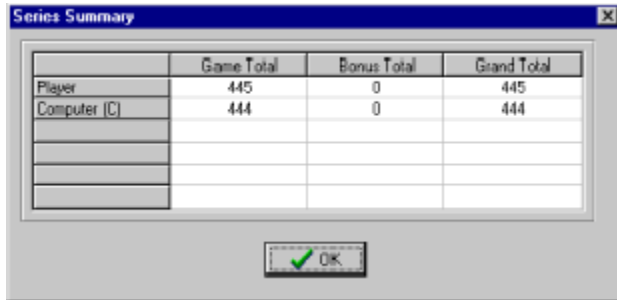
Player: Computer

	1	2	3	4	5	6
Game 1	1	1	1	1	1	1
Game 2	2	2	2	2	2	2
Game 3	3	3	3	3	3	3
Game 4	4	4	4	4	4	4
Game 5	5	5	5	5	5	5
Game 6	6	6	6	6	6	6
Game 7	7	7	7	7	7	7
Game 8	8	8	8	8	8	8
Game 9	9	9	9	9	9	9
Game 10	10	10	10	10	10	10
Game 11	11	11	11	11	11	11
Game 12	12	12	12	12	12	12
Game 13	13	13	13	13	13	13
Game 14	14	14	14	14	14	14
Game 15	15	15	15	15	15	15
Game 16	16	16	16	16	16	16
Game 17	17	17	17	17	17	17
Game 18	18	18	18	18	18	18
Game 19	19	19	19	19	19	19
Game 20	20	20	20	20	20	20
Game 21	21	21	21	21	21	21
Game 22	22	22	22	22	22	22
Game 23	23	23	23	23	23	23
Game 24	24	24	24	24	24	24
Game 25	25	25	25	25	25	25
Game 26	26	26	26	26	26	26
Game 27	27	27	27	27	27	27
Game 28	28	28	28	28	28	28
Game 29	29	29	29	29	29	29
Game 30	30	30	30	30	30	30
Game 31	31	31	31	31	31	31
Game 32	32	32	32	32	32	32
Game 33	33	33	33	33	33	33
Game 34	34	34	34	34	34	34
Game 35	35	35	35	35	35	35
Game 36	36	36	36	36	36	36
Game 37	37	37	37	37	37	37
Game 38	38	38	38	38	38	38
Game 39	39	39	39	39	39	39
Game 40	40	40	40	40	40	40
Game 41	41	41	41	41	41	41
Game 42	42	42	42	42	42	42
Game 43	43	43	43	43	43	43
Game 44	44	44	44	44	44	44
Game 45	45	45	45	45	45	45
Game 46	46	46	46	46	46	46
Game 47	47	47	47	47	47	47
Game 48	48	48	48	48	48	48
Game 49	49	49	49	49	49	49
Game 50	50	50	50	50	50	50

Choose the level of magnification for the scoresheet print preview.

Yahtzee - Series Summary

This dialog box shows the scoring totals for the series. Click on any control shown below to show a description of its function.



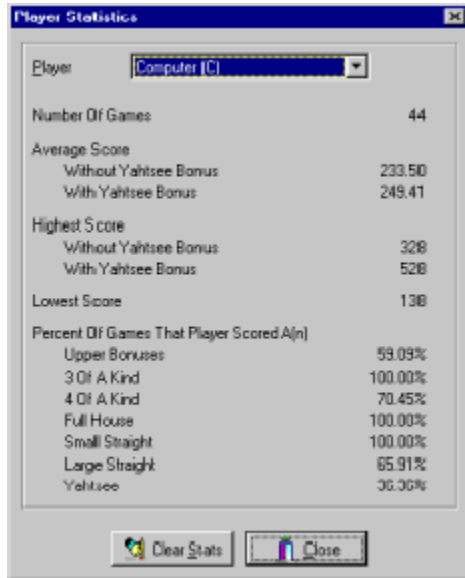
	Game Total	Bonus Total	Grand Total
Player	445	0	445
Computer (C)	444	0	444

OK

The totals for all completed games in the series are shown here. Game Totals (sum of all game total scores without bonus), Bonus Totals (sum of all Yahtzee bonuses) and Grand Totals (sum of all game total scores and bonus) for all players are shown.

Yahtzee - Player Statistics

Many player statistics are shown in this dialog box. Click on any control shown below to show a description of its function.



Clears all the statistics for the currently selected player. If the Confirm Clear Player Statistics option is enabled, then you will be asked to confirm the request before the statistics are cleared.

New Game

Start a new game. The New Game dialog box will be shown, allowing the selection of players for the game. If a game is in progress, you will be asked if you wish to save the current game.

Load Saved Game

Loads in a previously saved game. If a game is already in progress, you will be asked if you want to save the current game. Once the saved game is loaded, the save game file will be automatically deleted.

Save Game

Saves the current game, allowing it to be continued at a later time.

Show Series Standings

Shows the Series Summary dialog box. The Game Totals, Bonus Totals and Grand Totals are shown. This summary is also shown automatically at the end of each game.

Print Score Sheets

Shows a Print Preview of the scoresheets for the current game. You can print the scoresheets and, if required, change printer options.

Print Setup

Select printer and change printer options.

Options

Shows the Options dialog box.

Exit

Exits the program. If a game is in progress, you will be asked if you want to save the game.

This list shows the players not selected to play the next game.

Click this button to exit the dialog box without entering a score.

Shows a list of all currently available scoring choices. Enter a score by double-clicking the on the desired scoring line or by selecting a scoring line and clicking the **Score** button.

Adds the selected inactive player to the list of active players.

Removes the selected active player from the list of active players.

Use this control to select the number of games in the series. You can select from 1 to 6 games.

Starts a new game with the selected players.

Brings up the Player dialog box allowing the adding and deleting of players.

Closes this dialog box without starting a new game.

If checked, you will be asked to confirm any request to delete a player in the Players dialog box.

If checked, you will be asked to confirm any request to clear a player's statistics from the [Player Statistics dialog box](#).

If checked, you will hear the roll of the dice and other sounds during the game.

Accepts the new option settings and closes the dialog box.

Closes this dialog box without changing any of the options.

Type the name for a new player here.

Indicates whether the new player is controlled by the computer or is a human player.

Adds a new player to the list of players. This button will be disabled unless a unique name for the player is entered.

Deletes the currently selected player. If the Confirm Player Deletion option is enabled, then you will be asked to confirm the request before the player is deleted.

Closes the dialog box.

Shows the previous page of scoresheets.

Shows the next page of scoresheets.

Prints the scoresheets.

Closes the dialog box.

Shows one page of the scoresheet printout.

Closes the dialog box.

Shows the name of the player whose statistics are shown below.

Closes the dialog box.

Shows the accumulated statistics for the selected player. Statistics include the number of games played, high and low scores, average scores (with and without bonus), and scoring percentages.

