

SpellWrite User's Guide

Introduction

SpellWrite is a unique and innovative spell checker that is designed to be a companion to Windows. SpellWrite is a spell checker which works in any application of Windows at the touch of a single key. Easy to use and simple to install. SpellWrite will provide you with the ability to spell check over 85,000 words, anywhere in your Windows software. SpellWrite can expand this base to include any proper nouns or acronyms peculiar to your company or department.

[Using SpellWrite](#)

[SpellWrite Setup Program](#)

[WordPad Enhancements - WordPadPlus](#)

[Trouble Shooting](#)

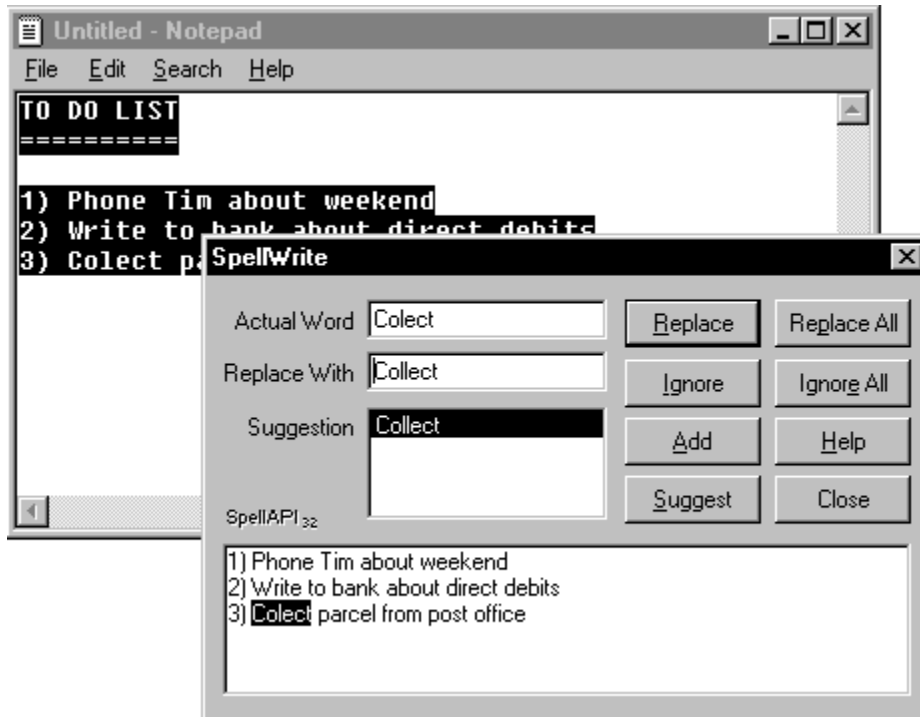
[Uninstalling](#)

[Technical Support](#)

Using SpellWrite

Once installed, SpellWrite is constantly active in all applications. In order to activate SpellWrite you will need to press the designated hot key. By default this key will be the F9 function key. Note: you can only activate and use SpellWrite when you are editing text.

The example below shows a user in the Notepad program. The user has simply typed some text and then pressed the hot key to start the spell checker.



SpellWrite has read the text from the application and extracted the word *Colect* as inaccurate. It has searched its dictionary for the correct spelling and suggested that word to the user. In order to replace the incorrect spelling simply press the *Replace* button. The following list is an explanation of the other buttons and entry fields in the SpellWrite windows.

ACTUAL WORD

This text field displays the word that has been designated as an error.

REPLACE WITH

This text field can be edited and includes the text that can be used to replace the incorrectly spelled word.

SUGGESTION

This is a simple list of all possible suggestions. If you click on a word in the list then that word is copied into the *Replace With* text field.

REPLACE ALL

This button will replace all occurrences of the incorrect word with the suggestion held in the *Replace With* text field.

IGNORE

Press this button and the spell checker will ignore the incorrect word.

IGNORE ALL

This will cause all occurrences of the incorrectly spelled word to be ignored.

ADD

Pressing this button will add the word held in the *Actual Word* text field to the dictionary of words. Valid words to add can only include the letters A to Z, hyphens and apostrophes.

SUGGEST

Clicking on this button will cause SpellWrite to search for suggestions on the word held in the *Replace With* text field. Try an experiment by typing some words into the *Replace With* field and pressing the *Suggest* button.

CANCEL

This button will cancel the spell check and return the user to the application that he or she was using.

SPELL CHECKING IN SPREADSHEETS

To use SpellWrite with spreadsheets simply place the cursor at the start of the text you wish to spell check and press the hot key. All text for that line will be checked. It is possible, in some spreadsheets to highlight an area to spell check. However, be aware that when SpellWrite pastes the changes back to the application, any formulae or fonts will be lost.

SPELL CHECKING IN WORD PROCESSORS

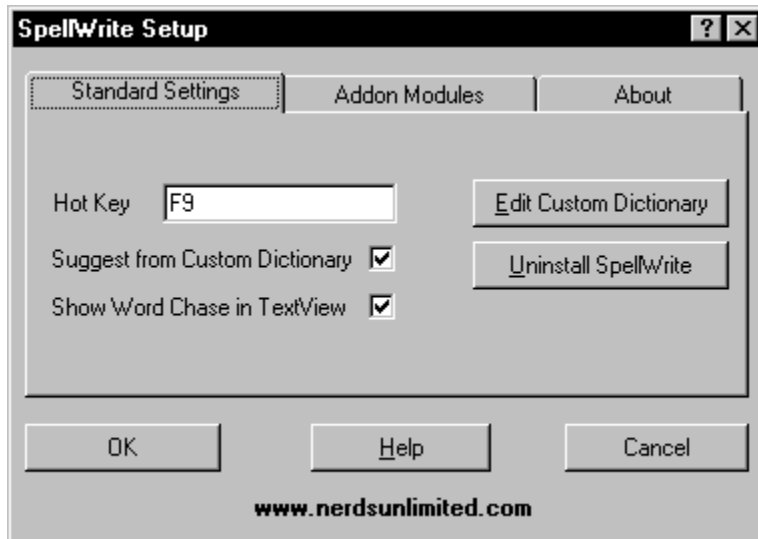
When using SpellWrite with word processors simply highlight the area of text, or the whole document, then press the hot key. As with spreadsheets any special fonts will be lost when the new text is pasted back to the application, apart from if you are using Windows Write. A quick tip is to quickly type your letter, spell check it and then format as necessary.

SPELL CHECKING IN OTHER PROGRAMS

When using other software with SpellWrite just remember to be in Text Editing Mode before accessing SpellWrite.

SpellWrite Setup Program

From the SpellWrite folder on the Startup Menu choose SpellWrite Setup. You will be presented with a screen as below :



HOT KEY

This text field allows the user to choose which hot key activates SpellWrite. Simply click into this field and press the Hot Key you want to run SpellWrite.

SUGGEST FROM CUSTOM DICTIONARY

A tick in this box indicates that suggestions will be given, where appropriate, from the custom dictionary file. Switching this option off will speed up the process of suggesting words.

SHOW WORD CHASE IN TEXT VIEW

Word chase simply shows the words being checked in real time, in other words - you will see each word highlighted in the document as it is checked against the dictionary files. A tick in this box indicates it is active. Switching off word chase will speed up spell checking.

EDIT CUSTOM DICTIONARY

Choosing this option will launch you into the program Notepad with the Custom Dictionary file open. The file is held in standard text format and you may add and delete words from the list. The maximum size of the Custom Dictionary is 64k.

UNINSTALL SPELLWRITE

Click on this button to uninstall SpellWrite, do not use any other method.

ADDON MODULES

Clicking on Addon Modules, gives a list of the programs that have been written to specifically integrate with SpellWrite. This version only has WordPad listed.



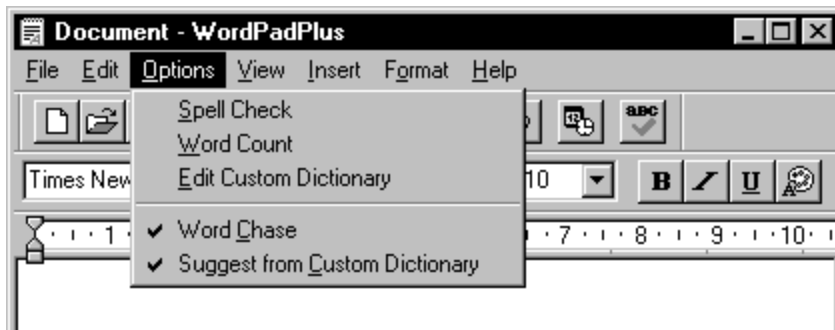
Simply click the check box to stop any enhancements from taking place to WordPad.

WordPad Enhancements - WordPadPlus

WordPadPlus is a simple, easy to use utility that adds spell checking and word count capabilities to the free word processor with Windows 95, known as WordPad. This brings WordPad up to full word processing standards. If your word processing needs include letter writing, reports and memos then this package is ideal for you. Dictionaries are available in both US and UK English formats.

Using WordPadPlus

WordPadPlus integrates fully with Microsoft WordPad, you do not need to run or call up any external programs. Once WordPad is launched, the extra features are incorporated immediately. When WordPad is running you will notice an extra menu called Options and a spell checker button in the toolbar.



Spell Check

To spell check either select the Spell Check menu option or the ABC button on the toolbar. You may either select a portion of text to check or if none is selected, the whole document will be selected. As with any other spell checker you may ignore, replace and add words. Any words added will be placed into the custom dictionary and can be edited at a later date.

Trouble Shooting

Limitations

SpellWrite works with all applications that support the ability to copy text from their text entry fields to the Windows clipboard using the Ctrl-C keys and allow paste back to the application by the Ctrl-V keys. An example of a program that does not support this feature is the old Windows 3.1 Paintbrush. It is impossible to copy text to the clipboard in text format with this program. Also the application must retain its selected text when another application is activated and the user clicks back on to the first application. If you do have an application that supports different keystrokes then please inform our technical support, they should be able to resolve this problem quickly.

Hot Keys

In the event that you do experience a hot key conflict with an application simply redefine your hot key to a key combination that does work with your application.

Uninstalling

In the unlikely event that you wish to uninstall SpellWrite run the uninstall program held in the SpellWrite folder from your Start Menu. The Setup program also has an uninstall button which calls this program. In the event that the uninstall program has been deleted run the setup/install program with the /U option (e.g. a:.exe /u).

Technical Support

Technical support is available, to reach us either write to the address below, fax or call us.

NERDS UNLIMITED
5 Rowes Mews
St Peters Basin
Quayside
Newcastle Upon Tyne
NE6 1TX
England

email : technicalsupport@nerdsunlimited.com
Phone/Fax : +44 (0) 191 2765056

