

10-04-92

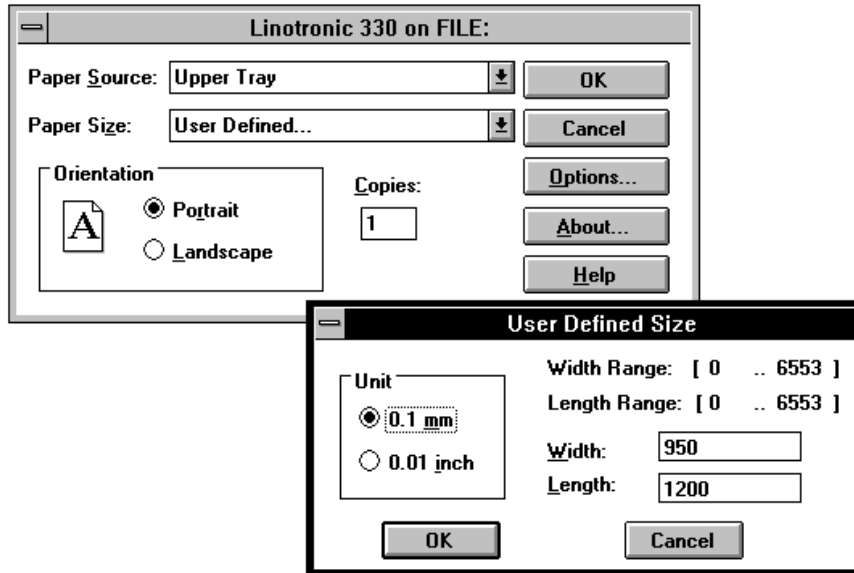
Here is a list of the most common problems that might be encountered in Corel DRAW V2.01L with Windows 3.1. This list will be updated as required:

- 1) When the interruptible display option is enabled, the scroll bars on Corel Draw's working screen have a mind of their own. If you hold down a scroll arrow or, in some cases, move the scroll handle, they tend to stay depressed. This causes your page to scroll out of view. Most of the time you can recover from this by doing a full page zoom.
- 2) WFNBOSS 2.01S converted Type 1 fonts will NOT download to PostScript printers (if the conversion is done under 3.1). Version 2.01T fixes this *.
- 3) If you use the Zoom tool to enlarge an area, the image may not clear before the repaint of the screen starts. This causes the image to overwrite itself on screen. Refresh Wireframe cures it.
- 4) Pasting of images into Corel DRAW from Paintbrush does not work.
- 5) a- Mosaic has problems directly related to video drivers, usually Super-VGA.
b- If you run Mosaic in standalone mode, minimize it and then open Corel DRAW, a SAVE in Corel DRAW will cause Mosaic to restore itself. If you close Mosaic, it will actually minimize. The only way to close Mosaic is from the Task List. Version 1.10K of Mosaic behaves correctly *.
- 6) The PostScript driver (version 3.5) shipping with Windows 3.1 will cause several serious problems with Corel DRAW and other Windows applications.
 - 1- The error handler rarely gives feedback on Corel Draw generated files.
 - 2- The user defined page size dialog has mislabelled checkboxes.

The first problem will affect the ability to diagnose complexity problems with PostScript files.

The second problem is already causing serious confusion at service bureaus. Device independent software, like Corel DRAW, will not show the problem until the file is output to the imagesetter. Device dependent software (Word for Windows, Pagemaker and Ventura Publisher) will show the problem right away. In the Paper Size combo box (see Fig. 1) of the Linotronic setup dialog, there is an option for User Defined... . The 'Extra' sizes (that are required for separations with crop marks) have been dropped. The User Defined selection brings up a dialog with various units options. THESE ARE MISLABELLED! In order to set up a 9.5 x 12 portrait page (Letter Extra) you MUST select 0.01mm units and key in the Width and Height of the page in 100ths of an inch. Fig. 1 illustrates the correct setup of the above mentioned page. DO NOT select 0.01inch in the units area.

Fig. 1



There is a new PSCRIPT.DRV available - version 3.51. It fixes the User Defined page problems, but not the error handler problem. It can be found, in the form of a self extracting .EXE on the following:

- Microsoft Download Service: 206-936-6735 (Drivers Library)
- CompuServe (Microsoft - driver library... GO MSL)
- Genie Network
- On-Line America (WDL - Windows Driver Library)

* Wfnboss V 2.01T and Mosaic V 1.10K, can be downloaded from the Corel DRAW 24hr. BBS at 613-728-4752 (up to 9600 bps, 8,n,1) or from CompuServe (GO COREL, Lib. 2).

