

The best auto-mercenary money can buy, Antonio Malochio is a Vietnam vet who did three consecutive tours of duty. This guy was into some heavy shit deep in the jungles of Cambodia, where he supposedly had dealings with Pol Pot, leader of the Khmer Rouge. Since the war, he's returned to his business as a furniture importer/exporter... but it all seems to be a front. Based on loose accounts, Malochio's been dealing with some "businessmen" in the Middle East who have been "funding" him. And now he's recruited every freelance auto-mercenary in the American Southwest. He's building an army... and something big is going down.

## Background Story

The year is 1976... a different 1976. You are Groove Champion, auto-vigilante, and you drive to avenge the death of your sister Jade, who was brutally murdered by known auto-mercenary Antonio Malochio. His plan, should he succeed, would leave the United States economy in shambles. He intends to destroy the U.S. strategic oil reserve and leave the country dry. His employer—OPEC. Jade tried to stop him... and failed. With help from seasoned auto-vigilante Taurus, former partner of Jade and now your wingman, and grease monkey Skeeter, who can fix just about anything, it's now up to you...

## Before The Installation

- Uses Microsoft DirectX 3 video and audio drivers. It is important that you check with your audio and video card manufacturer to determine if your hardware will support DirectX. Please see the [DirectX 3](#) section in this file for more information.
- Should not be installed to a compressed drive.
- Please make sure your computer system is 100% Windows 95-compatible; *Interstate '76* for Windows 95 is not compatible with Windows 3.1.
- To operate best, *Interstate '76* requires that your system have the latest Windows 95 32-bit drivers for your CD-ROM drive, sound, and video card. If you have any problems running the program, outdated drivers are the most likely cause.
- If you need help obtaining the latest sound and video drivers, check out the [Vendor List](#).

## **Can I listen to the game soundtrack on my audio CD player?**

Yes. The game music is streamed from the CD. Starting with track 2, all the music tracks will play on an audio CD player (e.g. CD player in car, house stereo).

## Can I run the game without the CD in the drive?

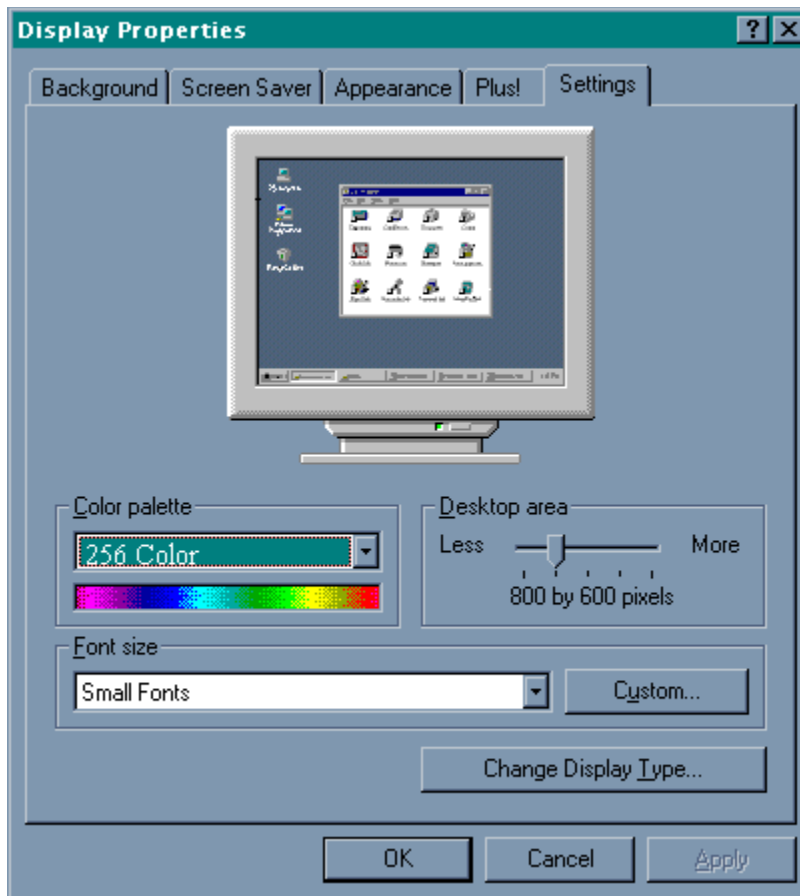
For single-player games, the *Interstate '76* CD #2 (Play CD) must remain in the CD-ROM drive at all times in order to run *Interstate '76*. The game accesses files from the CD during game play. Therefore, there is no way to play without a CD in the drive.

## Color Settings

This game utilizes the Direct Draw libraries of Microsoft's DirectX. Some video cards do not yet have driver support for Direct Draw. Updated drivers are being developed by manufacturers to remedy this. To obtain information on these updates, contact your [Video Card Manufacturer](#) and download their latest Windows 95 drivers for your video card. If you are not sure about your video card or its capabilities, please refer to the section called [Check Your Display Type Settings](#) for more information, or contact your [Video Card Manufacturer](#).

### To Change Your Color Setting:

You need to change the **Color palette** box of the window shown below to at least 256 Color. To go to the Display Properties window to change it, [click here](#).



If you choose to make this change at some other time, you can always return to this Help file and try again, or follow the steps listed below to access these settings.

1. Place your mouse cursor over an empty area of your desktop and click the right button on your mouse. At the bottom of the list that appears, click on **Properties**. This will bring up the Display Properties window. You can also bring this window up by clicking on the **Display** icon in the Control Panel.

2. Choose the **Settings** tab and change the color setting to 256 Color as shown in the **Color palette** box above.

If you have a video card that supports 256 Color, but you cannot select this as an option, check to see that you have the most updated Windows 95 video driver.

# Common Audio Problems

Half of the problems with sound cards are remedied by newer sound card drivers. This is highly recommended and is usually free and easy to do. You can contact your Sound Card Manufacturer for details.

## **Game Specific:**

[Can I listen to the game soundtrack on my audio CD player?](#)

## **General:**

[Installing a new sound card.](#)

[I just installed a new sound card. How come I'm not getting any sound?](#)

[Checking your sound card for conflicting settings.](#)

[I have only partial or no sound when running the game.](#)

[I have a Diamond Telecommander sound/modem card and it does not work with the game. What do I do?](#)

[I have a Packard Bell with little and/or no sound when playing the game.](#)

[I have an Advanced Gravis UltraSound ACE and I am experiencing severe lock-up problems.](#)

[Why is the sound fuzzy on my Sound Blaster Pro 2 sound card?](#)



# Common Input Device Problems

## Game Specific:

Joystick does not work in the game (e.g. Microsoft Sidewinder 3D Pro, Thrustmaster)

## General:

General Troubleshooting for Joysticks and Game Pads

Joystick Calibration

Mouse

# Common Tips & Troubleshooting for General Issues

## Game Specific:

Why does the game sometimes quit to the desktop?

Why does the game play slower on a Cyrix 686 processor?

Can I run *Interstate '76* on Windows 3.1, Windows NT or OS/2?

Can I run the game without a CD in the drive?

Can I listen to the game soundtrack on my audio CD player?

The taskbar hides a portion of the game window. Can I fix this?

## General:

My screen saver runs really slow when the game is running. What can I do about that?

The fonts on my game screen are too large and extend off the screen. Why is this happening?

## Power Saver Functions

Ctrl-Alt-Del locks up my system.

How can I improve performance?

Where do I go for game updates and/or patches?

# Common Troubleshooting Tips

Activision thoroughly tests its games on a variety of systems before they are released, but it is virtually impossible to test on all combinations of software and hardware. Many of the issues you may encounter in Windows 95 are caused by device drivers for video cards, sound cards, and CD-ROM drives that are not fully compatible with the Windows 95 operating system and/or DirectX. The following troubleshooting tips are intended to assist you in solving some of the common issues that occur with the Windows 95 operating system and the game.

**Installation** - This will focus on basic problems that might occur during the installation process.

**DirectX 3** - This will explain the DirectX 3 process and state general answers to frequently asked questions.

**Autoplay** - This is where to go if you are encountering problems with the title screen automatically appearing.

**Video** - Where to go if you are encountering video related problems.

**Audio** - Where to go if you are encountering audio related problems.

**Input Devices** - Where to go if you are encountering input device related problems (e.g. mouse, joystick, or gamepads).

**General Issues** - Commonly asked questions.

# Common Video Card Problems

Half of the problems with video cards are remedied by newer video card drivers. This is highly recommended and is usually free and easy to do. You can contact your [Video Card Manufacturer](#) for details.

## **Game Specific:**

### **Matrox Millennium error with DirectX 3**

**When I launch into a mission the screen goes black and freezes.**

**Why do I have wavy lines across my screen when I enter a mission?**

**How do I set my display for 256 Color?**

## **General:**

**The images are very choppy and slow while playing the game.**

**I installed a new video card, and the game doesn't look right. What do I do?**

**Changing the standard Windows 95 cursors causes video corruption.**

**When I launch the game from the title screen or from the taskbar, my screen stays blank and the game doesn't start. What should I do?**

**Game graphics are faded and/or strange in appearance.**

**The fonts are too large and/or extend off the screen.**

# Credits

## PRODUCTION TEAM

Directed By  
Sean Vesce

Produced By  
Scott Krager

Lead Designed and Written By  
Zachary Norman

Interstate '76 Conceived By  
Zachary Norman  
Sean Vesce

Lead Programmer  
Dan Stanfill

Art Director  
Rick Glenn

Associate Producer  
Doug Pearson

Technical Game Design  
David White

Associate Designers  
Lars Fuhrken-Batista  
Michael Fletcher

Assistant Designer  
Scot Kramarich

Additional Mission Layout  
Brian Dean Jennings

Additional Design Coordination  
Chip James

Engine Programmers  
Kurt Arnlund  
Scott T. Etherton  
Marshall Robin  
Henry Yu

3D Programmer  
Julio Jerez

Artificial Intelligence Programmer  
Karl Meissner

Audio Programmer

Scott T. Etherton

Multi-player Programmers

Dan Kegel  
Marshall Robin  
Jerry Waldorf

Vehicle Dynamics Programmer

Dan Stanfill

Engine Optimizations

Jean-Marc Morel

Tools Programmers

Patrick Griffith  
Marshall Robin  
David White

Additional Programmers

Michael Douglas  
Glenn Eychaner  
John Northan  
Bill Nunan  
Dominik Weber

3D Artists

Lance Charnes  
Paul Waggoner

2D Artists

Gary Brunetti  
Jeff Jorczak  
Juan Carlos Rodriguez

Production Coordinator

Chip James

Assets Management

David White  
Sung Yoo

QA Project Lead

Jason Wong

Testers

Chuck Bonini  
Jermaine Clarke  
James Coriston  
Chris Keim  
Todd Komesu  
Anthony Hatch Korotko  
Margie J. Luke  
Emily S. Moher  
Marietta Pashayan  
Matt Powers  
David Robkin

Curtis Shenton  
Tony Villalobos

Music Produced By  
Kelly W. Rogers  
Jason Slater

Musical Direction By  
Kelly W. Rogers  
Arion Salazar  
Jason Slater

Original Music By  
Bullmark

Music Written By  
Arion Salazar

Music Performed By  
Jon Bendich  
Tom Coster  
Les Harris  
Brain Mantias  
Arion Salazar  
David Schul

Additional Cutsценe Music By  
Jeehun Hwang  
Jeremy Ruzumna

Cutsценe Animation by Mondo Media

Project Supervisors  
Tova Adelman  
Melissa Kangeter

Assistant Project Supervisor  
Vivian Barad

Lead Artist  
Marco Bertoldo

Artists  
Eric Chadwick  
Cody Chancellor  
Goose  
Dave Horowitz  
Manny Marquez  
Mat Smiley  
Donald Wang

Sound Effects By Mix Magic Post Sound

Project Supervisors  
Diana Blake  
Oscar Coy

Sound Design and Mixing  
Derek Sample

Additional Engineering  
Joel Avila  
Robert Corbett  
Mike Klinger  
Lou Thomas

Simulation Weapon Sound Effects By SoundDelux, Inc.

Additional Sound Effects and Engineering  
Michael Schwartz

Vocal Direction  
Zachary Norman

Voices  
Groove Champion.....Andrew Heckler  
Taurus.....Greg Eagles  
Skeeter.....Tom Kane  
Antonio Malochio.....John DeLancie  
Jade Champion.....Lisa Picotte

Additional Voices  
Kurt Arnlund  
Aaron Cammarata  
Lance Charnes  
Lars Fuhrken-Batista  
Jesse Donahue  
Greg Eagles  
Michael Fletcher  
Rick Glenn  
Sarah Hanlon  
Chris Hepburn  
Chip James  
Brian Dean Jennings  
Scott Lahman  
Tom Kane  
Michael Kirby  
Scott Krager  
Scot Kramarich  
Zachary Norman  
Doug Pearson  
Lisa Picotte  
Marshall Robin  
David Stohl  
Sean Vesce  
Travis

Interstate '76 uses Smacker Video Technology.  
Copyright 1994 by Invisible, Inc. d.b.a. RAD Software.

Handwritten Font by T/Maker Company. Copyright 1997.



All rights reserved. ClickArt is a registered trademark of T/Maker Company. ClickArt Images copyright 1984-1994 by T/Maker Company. All rights reserved.

## ACTIVISION

Executive Producer/Director of Production  
Frank Evers

Director of Development  
Scott Lahman

Vice President of Technology  
Stephen Crane

Director of Multimedia Technology  
Henry Yu

Director of QA and Customer Service  
Jim Summers

QA Manager  
David Arnsperger

Public Relations  
Kerstine Johnson

Marketing  
Henk Hartong

Games Analysts  
John Harris  
Jonathon Moses

Documentation and Packaging  
Rick Glenn  
Erik Jensen  
Scott Krager  
Sylvia Orzel  
Mike Rivera  
Belinda Van Sickle

Installer and Technical Help Files  
Adam Goldberg  
Mark Lamia  
Ronnie Lane  
Frankie Tam

The Team Would Like To Thank The Following:

Dion Brain  
Jack Burton  
Elizabeth Capps  
Gerald Chao

John Clarke  
Jim Corbett  
Eveline Cureteu  
Eric Dandridge  
Woody England  
Maria Flagg  
J.J. Franzen  
Daren Friedendal  
Alan Gershenfeld  
Jamie Green  
David Grijns  
Matt Harmon  
Chris Hepburn  
Eric Johnson  
Brian Kelly  
Sean Kinnear  
Bobby Kotick  
Maryanne Lataif  
John Lemberger  
Jack Mamais  
Howard Marks  
Barbara Matias  
Veronica Milito  
Christi Moore  
Marc Norman  
Stephanie O'Malley  
John Peck  
Lewis Petersen  
Huisok Pyon  
Kenny Ramirez  
Alec Tam  
Bob Troy  
Cindy Tse  
Trey Watkins  
Andy Zavattero

Quality Assurance and Customer Support Team

Mr. Styles' Wardrobe Provided By  
Mr. Brown

Vehicles Provided By  
ABX  
Dover-Picard Corporation  
Glenn, Inc.  
Major Motors  
Moth Trucks  
Phaedra Motor Company  
Vikea International

Helicopters Provided By  
Quillery Helicopters of Lubbock

No polygonal animals were harmed  
during the making of this product

"Do not follow where the path may lead. Go instead  
where there is no path and leave a trail."  
-Anonymous

Dedicated to the memory of Joseph C. Vesce (1949-1995)

STAY TUNED FOR THE NEXT  
EPISODE OF INTERSTATE '76

# Customer Support

If you have any comments, questions, and/or suggestions about *Interstate '76* or any other Activision product, please feel free to contact us. If you are experiencing difficulty, please consult this help file before contacting Customer Support. The help file contains the answers to some of our most frequently asked questions and may quickly provide a solution to your problem. If, after reviewing the *Interstate '76* Help file, you are still experiencing problems, please feel free to contact us through any of the services listed. So that we can better help you, please be at your computer and have the following information ready:

1. Complete product title
2. Exact error message reported (if any) and a brief description of the problem
3. Your computer's processor type and speed (e.g. Pentium 90MHz)
4. Video and sound card makes and models (e.g. Diamond Stealth 64 video, Sound Blaster 16 sound...)

## Customer Support:

[North America](#)

[UK and Europe](#)

[Australia and Pacific Rim](#)

For Technical Support and Customer Service in areas not listed, please contact your local distributor or Activision via online (Please note, online support is in English only).

**Please Note: The network portion of this game is supported via our online services only. (available in English only)**

Locations for Updates and/or Patches:

[Where do I go for Game Updates and/or Patches?](#)

# DirectX 3

Upon completion of the *Interstate '76* setup, the install process will continue by determining if Microsoft DirectX 3 needs to be installed on your computer. If so, the Microsoft DirectX 3 setup program will install the appropriate files on your computer. If you choose not to install DirectX 3, and you find that later you need to install DirectX 3, follow these directions. With the disc #1 in your CD-ROM drive, install Microsoft DirectX 3 by right-clicking on the *Interstate '76* CD icon to get the Context menu. From that menu, select Install DirectX.

## Who makes DirectX and how can I contact them?

Microsoft created DirectX. If the answer to the question you are looking for is not found on this page you may want to contact Microsoft via mail at:

Microsoft Customer Sales and Service  
One Microsoft Way  
Redmond, WA 98052-6399, USA

Microsoft can also be reached in the USA at (800) 426-9400, or internationally at +1(206) 882-8080.

## What is DirectX and why do I need it?

Microsoft's DirectX 3 is an API (Application Programming Interface) set that increases the speed at which games play under the Windows 95 operating system. These APIs allow direct access to the enhanced features of hardware under Windows 95. With DirectX 3, a program has instant access to the hardware, allowing for great advances in graphics, sound, video, 3-D, and network capabilities of games.

Since Windows 95 and DirectX 3 are relatively new in the computer world and have not achieved compatibility with some older video cards, many manufacturers are releasing updated drivers for Windows 95 to meet the DirectX standard. If you are not sure about your video card's compatibility, consult the company that makes your video card.

If the Microsoft DirectX Installer does not detect DirectX 3 on your computer, it can install DirectX 3 for you. After installation is complete, you will need to restart your computer in order for DirectX 3 to take effect.

If you have other Windows 95 games on your computer, chances are you already have an earlier version of DirectX installed on your computer. In this case, the Microsoft Installer will write over that version with DirectX 3. At that point, the DirectX installation process will be complete. You will need to restart your computer for the changes to take effect.

If however, you already have DirectX 3 installed on your computer, the Microsoft DirectX 3 installer will detect that and not overwrite any DirectX 3 files. You will not need to restart your computer after installation in order to run *Interstate '76*.

DirectX 3 should not affect any titles designed for the original version of DirectX. Should you encounter difficulties with DirectX 3, please contact Microsoft for further information.

## How do I check to see if my computer supports Direct X?

1. Place the #1 disc in the CD-ROM drive and exit from any autoplay screens.
2. Double-click on "My Computer".
3. Right-click on your CD-ROM drive and choose Install DirectX.

If any of the components of DirectX are not certified, please call your hardware manufacturer for the updated drivers that support DirectX.

**I have heard DirectX is not compatible with some video cards. What can you tell me about that?**

Windows 95 and DirectX are relatively new in the computer world and have not achieved compatibility with some older video cards. Many manufacturers are releasing updated drivers to meet the DirectX standard. If you are not sure about your video card's compatibility, consult the [Vendor List](#) for the company that makes your video card.

**If I don't have DirectX will *Interstate '76* for Windows 95 install it for me?**

Yes. If the Microsoft DirectX Installer does not detect DirectX on your computer, it will install DirectX for you. After installation is complete, you will need to restart your computer in order for DirectX to take effect.

**If the DirectX Installer copied over a previous version, will the UnInstaller remove DirectX 3? How will this affect my other Windows 95 games?**

DirectX 3 will remain on your computer and you will be able to run other Windows 95 games that use Microsoft's DirectX libraries. DirectX 3 should not affect any titles designed for the original version of DirectX. Should you encounter difficulties with DirectX 3, please contact Microsoft for further information (address and phone number stated above).

**How do I restore my video and/or audio drivers once DirectX has been installed?**

1. Place the #1 disc in the CD-ROM drive and exit from any autoplay screens.
2. Double-click on "My Computer".
3. Right-click on your CD-ROM drive and choose Install DirectX.

Choose the button that satisfies your want (e.g. Restore Audio drivers). This process will install your past drivers and prompt you to restart Microsoft Windows.

**I am having problems with running *Interstate '76* and I think it might be related to my Direct X installation. What should I do?**

If you experience problems running *Interstate '76*, try turning off the enable 3D acceleration option in the DirectX setup program. To disable 3D Acceleration, double click on the dxsetup icon located in located in Program Files\DirectX\Setup. Uncheck the option for 3D acceleration in the middle of the DX Setup window.

**The following manufacturers suggest running DirectX3 with their products in the following configurations. If you need further assistance, please contact your [video card manufacturer](#) directly.**

**Diamond Multimedia**

For the following video cards, Diamond recommends using their proprietary video drivers instead of DirectX supplied drivers.

Stealth SE  
Stealth 64 Graphics 2000  
Stealth 64 Video 2000  
Stealth 64 Video 3000  
Stealth Video 2001  
Stealth Video 2001\TV  
Stealth Video 2500  
Stealth 3D 2000

If the Diamond drivers for your particular card are overwritten by the DirectX installation, re-install your video drivers or restore them from the DirectX setup file folder.

If problems still persist, it is recommended that you contact [Diamond Multimedia Systems](#).

### **Orchid Righteous 3D**

The Orchid Righteous 3D will not play in 320x 240 mode. It should work fine in 640 x 480 and higher resolutions.

STB Powergraph64 with Vision 95

We have experienced numerous problems with STB video cards running the STB Vision 95 set of display tools. Please uninstall your STB Vision 95 display tools and reinstall the STB drivers without the STB Vision 95 display tools if you experience any problems playing *Interstate '76*.

### **ATI MACH 64**

If you experience problems running with a ATI Mach 64, click on your Start Button and select Run, then enter SYSTEM.INI, then click OK.

Locate the section within the files labeled  
[Display]

and add the line STRETCHENGINE=0

Example:

```
[Display]
STRETCHENGINE=0
```

Click on FILE, then the SAVE option and exit your System Configuration Editor. Reboot the system and try playing *Interstate '76* again.

# Electronically Registering

There are three ways to access the registration for Windows 95:

- ® Select **Register Now** during the installation process.
- ® Insert the *Interstate '76* disc #1 (Install CD). From the *Interstate '76* title screen, click on **More**. Then, click on **Electronic Registration**.
- ® Right-click on the ***Interstate '76* CD** icon with the disc in your CD-ROM drive and select **Electronic Registration** from the menu.



# Game Controls

## Driving

Accelerate	Numpad Up	Joystick Forward
Brake	Numpad Down	Joystick Back
Steer Left/Right	Numpad Left/Right	Joystick Left/Right
Emergency Brake	Z	
Reverse	Backspace	
Shift Up	. (Period)	
Shift Down	, (Comma)	

## Radar

Radar Range	R
Target Nearest Enemy	T
Target Next Enemy	E
Cancel Target	Y
Target Under Reticle	Q

## Weapons

Fire Weapon	Space Bar	Joystick Button 1
Cycle Weapon	Enter	Joystick Button 2
Link Similar Weapons	L	
Fire Hardpoint 1	1	
Fire Hardpoint 2	2	
Fire Hardpoint 3	3	
Fire Hardpoint 4	4	
Fire Hardpoint 5	5	
Aim Handgun	Arrow Key Left/Right	Joystick Left/Right

## Views

Glance Down (View Dash)	Arrow Key Down	Joystick Hat Down
Glance Left/Right	Arrow Key Left/Right	Joystick Hat Left/Right
Glance Back	Arrow Key Up	Joystick Hat Up
Toggle V-Pit/G-Pit	F1	
External Cam Forward	F2	
External Cam Rear	F3	
External Cam Left	F4	
External Cam Right	F5	
External Cam Starsky Front	F6	
External Cam Starsky Rear	F7	
External Cam Beauty Front	F8	
External Cam Beauty Rear	F9	
Satellite View	F10	
Lock Player to Target	F11	
Lock Target to Player	F12	
Zoom In (External Cam)	Page Up	
Zoom Out (External Cam)	Page Down	

## ***Other***

Horn	G
Headlights On/Off	H
View Map	M
View Notepad	N
Binoculars	B

Pause Game	Pause
Exit Game	Esc

## ***Net Functions***

Invite Net Player (Host)	Ctrl + Y
Decline Net Player (Host)	Ctrl + N
Skip Net Player (Host)	Ctrl + X
Toggle Net Scores	Ctrl + S
Toggle Net Player Names	Ctrl + T
Toggle Net Chat Text	Ctrl + C
Regenerate After Death	Space Bar
Network Chat	Backspace

That's his name, Groove Champion—son of Nick and Tammy Champion. Nick, a four-time winner at Daytona, and Tammy, a former Miss America. Groove has spent his fair share of time on the track but his racing career has been stalled by his sister Jade, who consistently qualifies better than he. But now the murder of Jade has thrust Groove into the world of auto-vigilantism, where he must quickly learn the tricks of the trade in order to avenge her death and save America.

## How to Start the Game

[How do I start the game?](#) - Basic instructions on how to begin playing the game.

[How do I start network game play?](#) - Basic instructions on how to begin playing the network version of the game.

# Installing & Uninstalling the Game

## [Before the installation](#)

[Installing \*Interstate '76\* for Windows 95](#) - This contains install instructions and information about this version.

## [Electronically Registering](#)

[Uninstalling the Windows 95 version of the game](#) - Basic instructions on how to uninstall the game.

[Common Installation Problems](#) - Problems that might be encountered before and/or after installation.

# Installing the Game

## How to Install

1. Before installing, close all other applications. Also make sure Virtual Memory (located in your System Control Panel under Performance) is *not* disabled.
2. Insert the *Interstate '76* disc #1 (Install CD) into your CD-ROM drive and wait a few moments until the *Interstate '76* title screen appears. (If the title screen does not appear, please refer to the [AutoPlay](#) Troubleshooting section.)
3. Click the **Install** button to begin the installation process and follow the on-screen instructions.

**NOTE:** The game will play faster and smoother with the larger installs. *Interstate '76* can access game art and sound much faster from your hard drive than from your CD, so the more *Interstate '76* files installed on your hard drive, the quicker the game will play.

4. After *Interstate '76* installation is complete, your computer will install Microsoft's DirectX 3 drivers if you do not already have them. After installation of DirectX 3 is complete, you will need to restart your computer for the new drivers to take effect. For more information on DirectX 3, see the [DirectX 3](#) section of this file.
5. You can now run *Interstate '76 for Windows 95* by choosing **Start**→**Programs**→**Interstate '76**→**Interstate '76** from the **Start** menu or by clicking **Play** on the *Interstate '76* title screen.

## ***Interstate '76 Information***

**Minimum System Requirements for the Windows 95 Version**

**Minimum System Requirements for Network Play**

Sister to Groove and partner to Taurus, Jade is whip-quick, hot like a lick of flame and an ace behind the wheel. She's Daisy Duke, Mario Andretti and a Molotov Cocktail rolled into one. Jade has had a secret life as an auto-vigilante for some time. Her family never knew...



## Joystick does not work in the game (e.g. Microsoft Sidewinder 3D Pro, Thrustmaster)

If the joystick does not respond in the game, the odds are that it is not set up correctly. You can correctly set it up by following the instructions as follows:

1. Insert your *Interstate '76* disc #2 into the CD-ROM drive.
2. Click on **Start**→**Programs**→**Interstate '76**→**Interstate '76**.
3. From the *Interstate '76* launch screen choose **Options**.
4. Select **Control Configuration**.
5. Click on **Calibrate**. Under Joystick Selection, choose your joystick. If you have a Microsoft Sidewinder 3D Pro and choose to use that driver you should also make sure to set your switch on the joystick to the side with 2 dots.
6. Calibrate it, test it, and from the Joystick Properties windows choose the **Apply** button then the **OK** button. If you cannot calibrate or test your joystick from that point you probably have chosen the wrong driver. If you have a Microsoft Sidewinder 3D Pro and you have switched the switch to the side with 2 dots and it still does not calibrate contact Microsoft for assistance. If it calibrates correctly go to step 7.
7. You should be placed back at the *Interstate '76* Control Configuration window.
8. Now choose **DONE** and start the game.

## Matrox Millennium Error with DirectX 3

This card does not support Direct3D acceleration. You must disable this feature within the DirectX setup menu. Please follow these instructions to do so:

1. Place the *Interstate '76* disc #1 (Install CD) in the CD-ROM drive and exit from any autoplay screens.
2. Double-click on "My Computer".
3. Right-click on your CD-ROM drive and choose Install DirectX.
4. Click on the box labeled "Direct3D Hardware Acceleration Enabled", (this box should be empty) this will disable Direct3D.
5. Click on the OK button.

If problems persist contact [Matrox Graphics Inc.](#) for assistance.

## Minimum System Requirements for *Interstate '76*

- 100% Microsoft Windows 95 compatible computer system (including compatible 32-bit drivers for CD-ROM drive, video card, sound card and input devices)

- Windows 95 operating system
- Processor Type: Pentium 90MHz
- 40MB of uncompressed hard disk space
- 256 Color (640x 480) VLB or PCI video card with 1MB RAM
- 100% Sound Blaster compatible sound card
- 4X speed CD-ROM drive (600K/second sustained transfer rate)
- 100% Microsoft compatible mouse and driver
- Dedicated game card is highly recommended for joystick

### Memory:

- 16MB RAM:
- 80MB of uncompressed hard drive space for minimum install and 110MB for recommended install.
- Additional 40MB of uncompressed hard drive space for virtual memory if you have less than 32MB RAM

Supports any 100% Microsoft Windows 95 compatible input device, including but not limited to: Microsoft Sidewinder; CH Flightstick Pro and Virtual Pilot; Gravis Analog Joystick, Analog Joystick Pro, and Gamepad; Thrustmaster Flight Control System.

**NOTE:** The Windows 95 version uses new Microsoft DirectX 3 technology, and requires that your system have the most updated drivers that fully support DirectX.

**NOTE:** You may experience slower performance when playing the game using a Cyrix 686 processor.

**NOTE:** In order to play single player *Interstate '76* for Windows 95, the *Interstate '76 #2* (Play CD) must be in your CD-ROM drive at all times. To join a network game, the *Interstate '76 #2* (Play CD) is not required.

*Interstate '76* may have trouble working with some 1993 or earlier Matsushita CD-ROM drives. These CD-ROM drives have trouble reading beyond 63 minutes on CDs, and *Interstate '76* uses the full CD. These drives were sold under the names of Panasonic, JVC, Reveal, Creative Labs and Plextor. Gameplay may occasionally slow down and the CD-ROM drive will be accessed constantly. We highly recommend that you upgrade to a newer CD-ROM drive to avoid problems with other programs in the future.

[Click here](#) if you have a NexGen Pentium compatible processor or [click here](#) if you have a Cyrix 686 processor and are receiving a warning message during the install process.

Skeeter is different. He has no known family and people have been taking advantage of him all his life. He's probably wanted by the law for crimes he doesn't even know he committed. Eventually got a job on the one of the pit crews for Champion Motors, then left with Jade when she decided it was time to join the fight. One thing can be said—Skeeter is the best damn mechanic around and can fix anything. He'll follow you and Taurus in his van and cannibalize the vehicles you destroy. Then when the action slows down, he'll hook up with you and do any salvage work you want done. The weird thing about Skeeter is that he often sees things more clearly than anyone ever could—he can say some pretty dark shit. A word of advice—watch out when he drives, he seems to be narcoleptic.

## Starting the Game

After installing the game, insert the Interstate '76 disc #2 (Play CD) into the CD-ROM drive and choose the **START** button and select **PROGRAMS**. Click on **Interstate '76** and choose **Interstate '76**.

# Supported Operating Systems

This game supports one operating system at this time; Microsoft Windows 95

The following operating systems are not supported:

MS-DOS 6.22

MS-DOS Mode 7.0

Microsoft Windows NT

IBM OS/2 (All Varieties)

# Table of Contents



**NOTE:** For your benefit, we have created a [Readme.txt](#) file that contains last minute information that could not be included in this on-line help file. If information is not found within this on-line help file, please view our [Readme.txt](#) file.

## **System & Setup Requirements**

## **Background Story**

## **Installing & Uninstalling the Game**

## **How to Start the Game**

## **Game Controls**

## **Information for *Interstate '76* Multi-Melee Play**

**Common Troubleshooting Tips** - Where to go when you are having problems with the game.

**Vendor List** - A directory of hardware/software companies for compatibility issues.

**Activision Customer Support** - Information about our support services.

**Hints** - Where to go when you need hints.

**Credits** - The people who made this game possible.

## Taskbar Always on Top

In order to launch *Interstate '76*, the Windows 95 taskbar cannot have the option Always On Top selected.

For directions on how to turn this option off, please see the Microsoft Help system. [Click Here](#) to display the Microsoft Help system subject on Configuring the Taskbar.



Taurus is not his name, it's what people call him. He's a seasoned auto-vigilante who was Jade's partner. Originally from New England, where he was a poet, his wife and daughter were killed by criminals—don't ever bring it up with him, though. He came to the desert to clear his head and never left. Instead he figured it was time to start cleaning up society his way. After a while he hooked up with Jade and has been driving together ever since. And now he must help Groove in his quest for revenge. Taurus drives a '66 Jefferson Sovereign with a bull's skull on the hood. He calls it "Eloise." @\*%# with Taurus and you'll get the horns.

## The taskbar hides a portion of the game window. Can I fix this?

This can happen if your taskbar is always on top. You can hide the taskbar by right-clicking on it and selecting **Properties**. Click **Auto Hide** and then **OK**. The taskbar will hide when it is not used. To make the taskbar reappear, place your mouse in the area where the taskbar once was and it will appear.

# Uninstalling the Game

## How to uninstall *Interstate '76*.

The Uninstall option in *Interstate '76* allows the game to remove itself completely from your hard drive. From the **Start** button, go to **Programs**→**Interstate '76**→**Interstate '76 Uninstall** and follow the Uninstaller instructions.

**NOTE: You should always uninstall the game with the Uninstaller provided.**

If you remove the game from your hard drive by dragging your *Interstate '76* folder to the Recycle Bin, certain files may be left behind causing problems with a later reinstallation of the game. Should this occur, completely remove all *Interstate '76* files from your computer, complete the following steps:

1. Make sure you have deleted the entire directory to which you installed *Interstate '76*.
2. Remove *Interstate '76* from the **Start** menu.
  - a. From the **Start** button go to **Settings**→**Taskbar**.
  - b. Select the **Start Menu Programs** tab.
  - c. Click the **Remove** button.
  - d. Highlight and then delete the entire ***Interstate '76*** entry.
3. You must also clean up the Windows 95 Registry in order to be able to reinstall *Interstate '76* again.
  - a. Go to the **Start** menu on your taskbar, select **Run**.
  - b. In the Run dialog box, type **REGEDIT** and click on the **OK** button.
  - c. Once REGEDIT is open, double-click the entry called **HKEY\_LOCAL MACHINE**.
  - d. Double-click on **SOFTWARE**. If you have any other Activision programs installed, open the Activision folder and delete only the ***Interstate '76*** folder. Otherwise, delete the entire item called **Activision**.

## **When I launch into a mission the screen goes black and freezes.**

We have found this to be the case when you do not have DirectX certification. In most cases you can fix this problem by updating your video card drivers. This is highly recommended and is usually free and easy to do. You can contact your Video Card Manufacturer for details.

## **Why do I have wavy lines across my screen when I enter a mission?**

We have found this to be the case when outdated DirectX drivers are present on a system. This can be fixed by updating your video card drivers. This is highly recommended and is usually free and easy to do. You can contact your Video Card Manufacturer for details.

## Why does the game play slower on a Cyrix 686 processor?

You may experience slower performance when playing the game using a Cyrix 686 processor. This is partially due to the fact that *Interstate '76* is designed for use on a Intel Pentium processor. Try adjusting the settings in the Graphic Detail menu within the game to get better performance.

## Why does the game sometimes quit to the desktop?

Occasionally, *Interstate '76* will suddenly quit to the desktop. This may be a result of a conflict with the EZDesk desktop utility, which is used to organize icons on your desktop. Disable EZDesk whenever playing *Interstate '76*.

The game may also suddenly minimize to the taskbar if you are running an electronic mail program (e.g MS Exchange) in the background. Quit all applications before playing *Interstate '76*.

