

This list box contains a list of entries.

Existing entries may be changed by transferring them to the edit box, making the changes and reinserting the new data in the list

Depending on the page, the list may be sorted or unsorted, case-insensitive or not

## Remote

This dialog can be used to select a remote computer running NTMail and allow the user to remotely configure the NTMail servers on that machine.

The CPL will only connect to the remote machine if the software version on that machine matches that of the CPL.

If the CPL applet is connected to a remote machine, files cannot be written or deleted so some functionality is lost.

A connection via a low speed modem link.

It is recommended that the following options are set as listed.

non-default Outgoing:Remote Mail Servers  
disable Outgoing:Send Outgoing Mail Immediately  
disable Outgoing:Retry interval

## Mail Manager Mailables

This page is used to Add, Remove or Change Mail Manager mailables.

The Mailable field contains a list of existing Mail Managers. When one is selected, the Help text edit box is filled.

The Mail Manager can be removed by pressing the Remove button.

The Mail Manager Help Message may contain a subject heading and variables. If a subject is present, the subject text will be used in the description field of the Accounts List.

If either of the selected fields is changed, the Add button is enabled, allowing the user to add the changed entry - note if the mailable name is not changed, the effect is to replace the existing user.

If the Add or Remove buttons are used, the Accounts list is updated accordingly, but the Registry is only updated when the Apply

## Fax Maildrops

This page is used to Add, Remove or Change Fax maildrops.

The Fax field contains a list of existing Fax maildrops. When one is selected, the Banner Message and either the phone number or the Access File list are filled.

The Edit Template button is used to open a dialog allowing the user to edit the fax template file. The template for new accounts is based on the default template defined in the file 'default.fax' in the NTMail base directory.

If the maildrop has an associated Access Control File, the access list is filled with entries from that file. The Insert button can be used to insert a new access control line to the top of the list.

An existing entry can be deleted by first selecting the line, which enables the Edit and Delete buttons, and then pressing the Delete button.

Similarly, an existing entry can be edited by first selecting the line, and then pressing the Edit button. This can also be done in one step by double-clicking the line.

The Up and Down arrows to the right of the list can be used to reorder the sequence of lines in the access control list.

The selected maildrop can be removed by pressing the Remove button.

If any of the fields for a selected entry are changed, the Add button is enabled, allowing the user to add the changed entry - note that if the Fax field is not changed, the effect is to replace an existing fax maildrop.

If the Add or Remove buttons are used, the Accounts list is updated accordingly, but the registry is only updated when the Apply button is pressed.

The Account Selection dialog allows the user to select which type of account to add.

The allowed types are:

User Maildrops

Forwarding Maildrops

Executable Maildrops

Auto Responder Maildrops

Fax Maildrops

Mail Manager Maildrops

This button can be used to add text in the edit box on the left of the button to the list box on the right

this button can be used to remove a selected entry from the list box on the right of the button and to place it in the edit box to the left



## Variables

NTMail will check for a sequence %command% in an information or holiday message. The sequence will be replaced with a value.

The following commands are available:

%subject%                      subject of incoming mail message

%from%                         who the message is from

%to%                            who the message is to

%date%                         date and time of the original message

%messages:maildrop-name%   the number of messages currently waiting in the given POP account. The value is 0 if the account does not exist.

**see also**

[Subject Heading](#)

## Account Type

## Access Control File

This is a text file containing an ordered sequence of access control lines.

An access control line has the form:

```
access_mode email_address telephone_number [cost_code]
```

where `access_mode` is either 'A' or 'Allow' for allow access or 'D' or 'Deny' for denied access. The strings are matched independent of case.

`email_address` is a wild card email address

`telephone_number` is a wild card telephone number.

`cost_code` is an optional cost code, which will be placed in the log file with the statistics for this entry.

Pressing this button will cause the CPL applet to write any outstanding changes to the registry, and then close returning control to the Control Panel.

The caption bar shows the name of the currently connected machine

This edit box may be used to enter text for new entries to be inserted in the associated list box, or to change existing entries.

Mail to a Fax account is sent on via Fax rather than e-mail.

An e-mail message is sent automatically in reply to anyone sending mail to this account.



Mail sent to an Executable account causes the action defined by the command line to be automatically invoked.

A Forwarding account can be used to reject mail or to forward it to alternative destinations, eg if someone has changed job.

## **Contents**

General Configuration

Accounts List

## default.fax

The default fax template is:

-----FAX STARTS-----

From: %from%

To: %to%

Subject: %subject%

Date: %date%

%message%

-----FAX ENDS-----

## Incoming

The Incoming page contains:

- The default Domain Name - none will be added to any mail message where none is specified.
- An optional list of Local Domain names
- Provision for limiting message size to n kBytes. - If the Limit check box is not checked or the limit value is zero, then there is no limit to the allowed message size. If you wish to use this option, the recommended minimum size is 64K.
- Provision for defining a single line message to be added to every message passing through the NTMail system. - This may be used to add your own customised message advertising your services. The message is limited to a maximum of 60 characters.

## Outgoing

The Outgoing page contains:

- The list of Remote Mail servers is a list defining how NTMail will send outbound mail. If a '\*' is used, the mail server defined in the message will be used. A list of mail servers may be defined to allow redundancy in the case that mail must be delivered (for example, on a dial-up line).
- The Check button will attempt to reach the specified mail server. If the mail server cannot be reached, then it will fail.
- An Explain button that gives an explanation of the action if mail is sent to the selected entry in the Remote Mail Server list. The action for '\*' is to send mail to the address given in the email message.
- If the 'Send Outgoing Mail Immediately' option is selected, NTMail will immediately send outbound mail when it arrives at the server. This option should not be checked for dial-up connections..
- The retry interval specifies how often NTMail will try to send mail to servers that cannot be reached. The default interval is 12 minutes. This should not be set for dial-up connections.
- Provision for sending a warning if mail could not be sent. If the 'Send warning' check box is not checked or the limit value is zero, then the default retry interval is 24 hours.
- Provision for setting a delay period, after which unsent mail is returned to the sender. If the limit value is zero, then the default delay is 72 hours.

## Configuration

The Configuration page contains:

- Provision for setting the Time Zone for the server.
- Provision for sending receipts when requested. - Some POP clients allow a return receipt to be sent when the mail arrives at the destination SMTP server. Checking this option will allow NTMail to send such a receipt when requested.
- Provision for resolving Host names on connection. - NTMail will attempt to carry out a reverse lookup on the address of any client when it connects. If there is no local DNS, it is recommended that this option be checked otherwise every message sent to the server will experience a 30 second delay.

## Configuration

The Configuration page contains:

- Provision for setting the Time Zone for the server.
- Provision for configuring the interface for the Mail Monitor utility. The Mail Monitor is located on the Hostname machine and NTMail communicates via the port specified.
- If the Verify Incoming Addresses option is enabled, NTMail ensures that the address given in the MAIL FROM protocol entry is valid. If the address is not valid, the mail is rejected. The default is to disable this option as it significantly slows down mail transfers.
- If the Verify Outgoing Addresses option is enabled, NTMail ensures that the address given in the RCPT TO protocol entry is valid. If the address is not valid, the mail is rejected. The default is to disable this option as it significantly slows down mail transfers.
- Provision for saving Bad Messages in the NTMail BadMes directory. Bad messages include those sent to null@compnay.com (typically bounced list messages) and mail that cannot be delivered.
- Provision for sending receipts when requested. - Some POP clients allow a return receipt to be sent when the mail arrives at the destination SMTP server. Checking this option will allow NTMail to send such a receipt when requested.
- Provision for resolving Host names on connection. - NTMail will attempt to carry out a reverse lookup on the address of any client when it connects. If there is no local DNS, it is recommended that this option is left unchecked otherwise every message sent to the server will experience a 30 second delay.
- Provision for a daily summary of message Statistics to be sent to the PostMaster.



## User Maildrops

This page is used to Add, Remove or Change User maildrops.

The User Name field contains a list of existing Users. When one is selected, the Password and Alias entries are filled. If the user has a holiday maildrop rather than a pop maildrop, then the Holiday message is also filled.

The user can be removed by pressing the Remove button.

Toggling the Holiday message check box causes the maildrop type to change from pop to holiday or from holiday to pop.

If a holiday maildrop is changed to a pop maildrop, then the holiday message is cleared. If the changes are applied using the Apply button, the the original message is lost.

The Holiday message may contain a subject heading and variables. If a subject is present, the subject text will be used in the description field of the Accounts List.

If either of the selected fields is changed, the Add button is enabled, allowing the user to add the changed entry - note if the user name is not changed, the effect is to replace the existing user.

If the Add or Remove buttons are used, the Accounts list is updated accordingly, but the Registry is only updated when the Apply button is pressed

## Accounts List

This page has a list of all the known maildrops. The four buttons at the head of the list can be used to sort the list - either by alias, by type, by user or by description.

New maildrops are created using the Add button. This takes the users to the Account Selection dialog. Once the user has selected the type of maildrop, the appropriate maildrop page is activated.

Existing entries can be edited by double-clicking on the appropriate line. This causes the appropriate maildrop page to be filled with the data for that maildrop.

The Remove button can be used to remove a selected entry. An entry may be selected by means of a single click or by dragging the focus rectangle.

The Move button is activated once a POP or Holiday account is selected. It can be used to move the account to a new Full Domain. Note that the action cannot be undone by the Cancel button - the account has to be moved by selecting the new Domain, selecting the account and then moving it back to the original Domain.

### **see also:**

[User Maildrops](#)

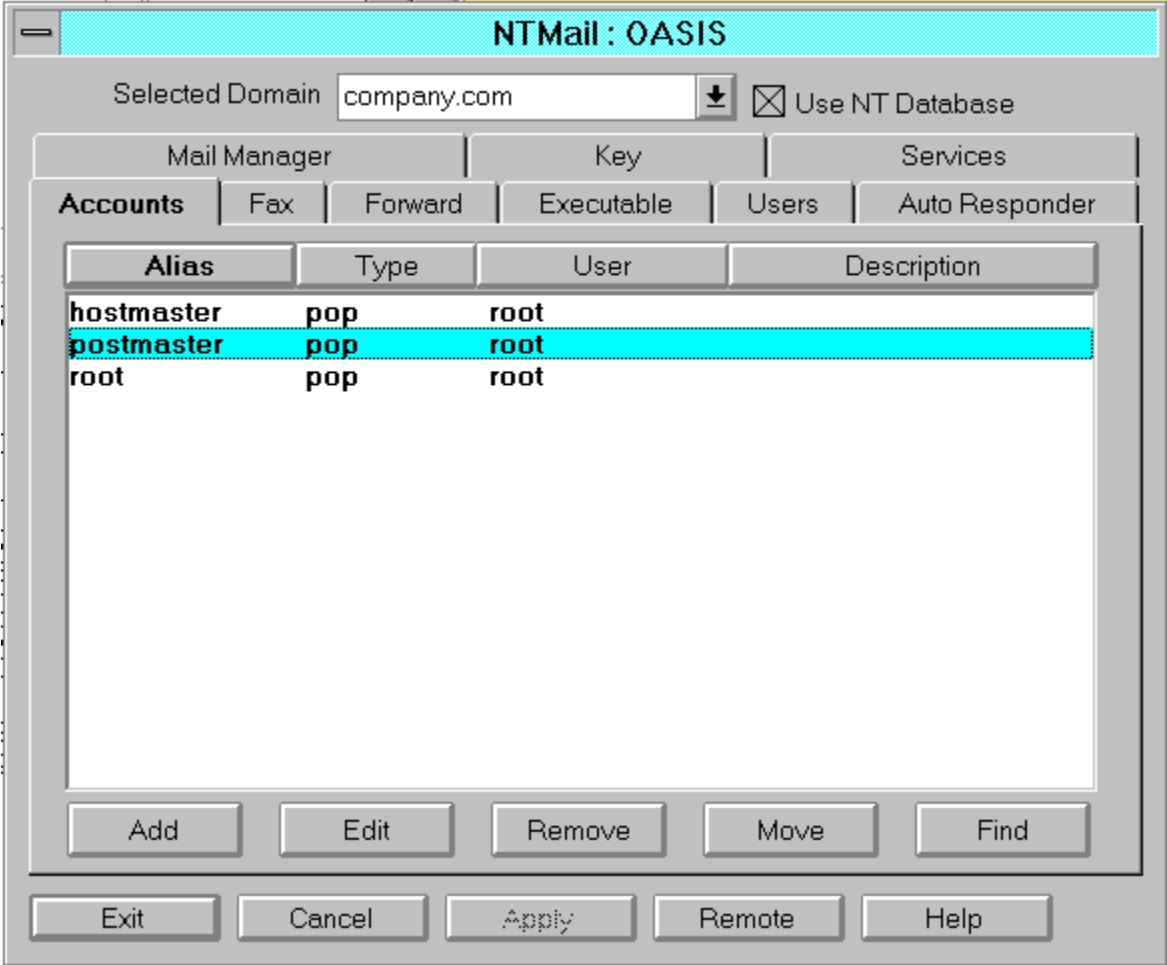
[Forwarding Maildrops](#)

[Executable Maildrops](#)

[Auto Responder Maildrops](#)

[Fax Maildrops](#)

[Mail Manager Maildrops](#)



## Forwarding Maildrops

This page is used to Add, Remove or Change Forwarding maildrop.

The Maildrop field contains a list of existing Forwarding maildrops. When one is selected, the Reject or Forward fields are filled - including the list of addresses for the forward mode.

The maildrop can be removed by pressing the Remove button.

If the Reject button is selected, the maildrop is converted to a moved maildrop.

If the Forward button is selected, the maildrop is made converted to a forward maildrop, and a list of one or more email addresses must be supplied.

If either of the selected fields is changed, the Add button is enabled, allowing the user to add the changed entry - note if the maildrop is not changed, the effect is to replace the existing maildrop.

If the Add or Remove buttons are used, the Accounts list is updated accordingly, but the Registry is only updated when the Apply button is pressed.

## fax template file

This file defines the layout of the fax page. The default file for new templates is the file 'default.fax' in the NTMail base directory.

The following parameters are supported:

%subject%	The message subject.
%from%	The complete from line
%from-email%	Email address in the From: clause
%from-user%	User's name if it is in the From: clause, otherwise email-address
%to%	
%to-email%	Email address in the to clause
%to-user%	User's name if it is in the To: clause, otherwise email-address
%date%	
%cc%	
%message%	the entire message body
%header%	the entire message header
%mailbox:box-name%	

## Auto Responder Maildrops

This page is used to Add, Remove or Change Auto Responder maildrops.

The Maildrop field contains a list of existing Executable maildrops When one is selected, the corresponding Message field is filled.

The message may contain a subject heading and variables. If a subject is found, the subject text will be used in the description field of the Accounts List.

If either of the selected fields is changed, the Add button is enabled, allowing the user to add the changed entry - note if the maildrop is not changed, the effect is to replace the existing maildrop

If the Add or Remove buttons are used, the Accounts list is updated accordingly, but the Registry is only updated when the Apply

## Executable Maildrops

This page is used to Add, Remove or Change Executable maildrops.

The Maildrop field contains a list of existing Executable maildrops When one is selected, the corresponding Command Line field is filled.

If either of the selected fields is changed, the Add button is enabled, allowing the user to add the changed entry - note if the maildrop is not changed, the effect is to replace the existing maildrop

If the Add or Remove buttons are used, the Accounts list is updated accordingly, but the Registry is only updated when the Apply button is pressed.

## Log Actions

The Log Actions page contains:

- Provision for tuning the logging actions for POP, POST and SMTP services. The default action is to log all failures for each service.
- You may also elect to delete files when the disk space drops below a specified limit. This is disabled by entering 0 in the log size edit box.



## Key

This page shows the current software key, along with a description of the facilities enabled by this key.

If the system key is invalid when the CPL applet is activated, the user must enter a valid key in order to proceed.

## Mail Server List

This page has a list of domains and their associated aliases. The two buttons at the head of the list can be used to sort the list - either by domain or by alias.

New maildrops are created using the Add button. This takes the user to the [Mail Server](#) page.

Existing entries can be edited by double-clicking on the appropriate line. This causes the [Mail Server](#) page to be filled with the appropriate data.

The Remove button can be used to remove a selected entry. An entry may be selected by means of a single click or by dragging the focus rectangle.

### **see also:**

[Mail Server](#)

## Mail Server

This page is used to Add, Remove or Change Mail Server entries

The Domain field contains a list of existing Domains. When one is selected, the Destination Machine edit box is filled with the name of the Destination Machine to be used for the given Domain.

The alias can be removed by pressing the Remove button.

If either of the selected fields is changed, the Add button is enabled, allowing the user to add the changed entry - note if the alias is not changed, but the domain is, then the effect is to replace the existing alias.

If the Add or Remove buttons are used, the Domain Alias list is updated accordingly, but the Registry is only updated when the Apply button is pressed

This account is used for normal e-mail. A holiday message can be setup to be used as a reply should someone be temporarily unavailable.

## Domain Status

## Services

This page allows the user to start, stop or update selected services.

The Apply button can be used to do this immediately, otherwise the user will be asked to confirm this should be done after exiting the CPL applet.

## General Configuration

The following pages are used to configure NTMail

[Configuration](#)

[Outgoing](#)

[Log Actions](#)

[Threads](#)

[Mail Server List](#)

[Mail Server](#)

[Key](#)

[Services](#)

The image shows a screenshot of the NTMail: OASIS Configuration dialog box. The window title is "NTMail : OASIS". The dialog has a tabbed interface with the following tabs: Mail Server, Key, Services, Configuration (selected), Outgoing, Log Action, Threads, and Mail Server List. The Configuration tab is active and contains the following settings:

- Time Zone: GMT
- Offset: +0000
- Daylight Saving: GMT
- Mail Monitor section:
  - Hostname: localhost
  - Using port: 22200
- Verify Incoming Addresses
- Send Receipts when requested
- Verify Outgoing Addresses
- Resolve Host Name on connection
- Save Bad Messages
- Send daily statistics to Postmaster

At the bottom of the dialog, there are five buttons: Exit, Cancel, Apply, Remote, and Help.

The Apply button is activated if there are outstanding changes on one or more pages.

Pressing this button forces all outstanding changes to be written to the Registry.

It is not necessary to apply all changes before leaving one page for another.



A user maildrop may have one or more aliases.

Auto Responder, Executable, Fax and Forwarding maildrops have just one alias.

The type field may be one of the following:

- executable
- fax
- forward
- holiday
- info
- list
- list manager
- moved
- pop
- robot

The user field contains the actual user name for the maildrop. In the case of pop or holiday maildrops, where the user may have aliases, there will be one entry per alias.

The description field gives further information about a maildrop.

Fax maildrop: either the telephone number to be dialled or the name of the fax access control file.

Forward maildrop: the email address where mail is to be forwarded.

Holiday maildrop: either the subject of the holiday message or the name of the holiday message file if no subject could be found.

Info maildrop: either the subject of the information message or the name of the information message file if no subject could be found.

Robot maildrop: the command line for the executable.

## Subject Heading

NTMail will allow you to change any elements of the the mail message header. To change the subject you would set the first line to:

-Subject: new subject text

It is also a good idea to set the 'From:' field using:

-From: null@company.com (User Name)

**see also**

[Variables](#)

Pressing this button leads to this file

Pressing this button will cause the CPL applet to discard any outstanding changes and to close returning control to the Control Panel

## Threads

- Provision for changing the maximum number of simultaneous incoming messages - the allowed range is 5 to 128, with a default of 20
- Provision for changing the maximum number of simultaneous outgoing messages - the allowed range is 5 to 128, with a default of 20
- Provision for changing the maximum number of simultaneous POP clients - the allowed range is 5 to 128, with a default of 20
- Provision for enabling (default) or disabling the Password server, which can be used by Eudora.
- Provision for enabling (default) or disabling the FINGER server, which will display the number of messages waiting for a user.



## **Selected Domain**

This list box shows a list of all existing Full Domains.

These domains are created by the NTDomain CPL

## **NT User Database**

This check box is only present if the NTMail key supports unlimited users and the servers are running under Windows NT.

If selected, the accounts list will show NT User Database POP accounts as well as the normal Registry accounts.

These buttons allow the accounts list to be sorted by the appropriate parameter.

These tabs allow access to the individual account entry pages

Press one of these tabs to configure NTMail options and settings



