

[About SPEA MEDIA XTC driver](#)

[Basic Configuration](#)

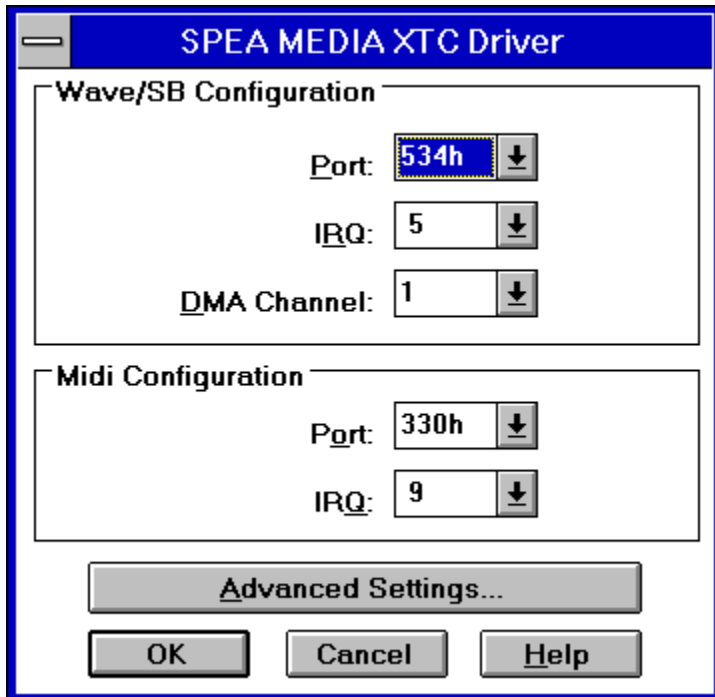
[Advanced Configuration](#)

About SPEA MEDIA XTC Driver

The SPEA MEDIA XTC driver setup allows you to configure the SPEA MEDIA XTC hardware settings in the Windows environment. The SPEA MEDIA XTC driver inherits all the hardware settings made by SSInit. Any changes made to the driver setup will be reflected in the SSInit settings. Conversely, any settings made in SSInit will be reflected in this driver setup screen.

Basic Configuration

This is the main driver configuration screen. To select help on a particular option click the mouse on the appropriate area below.



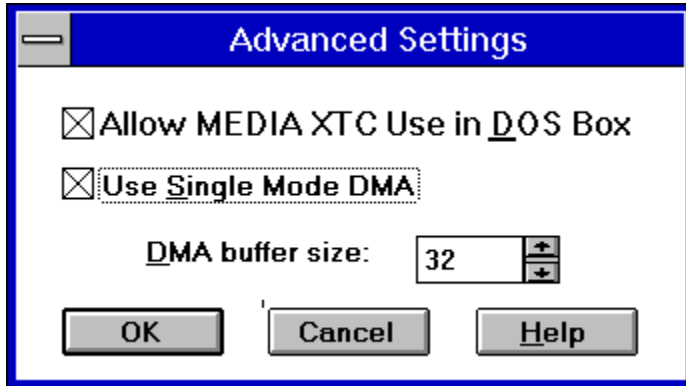
The image shows a Windows-style dialog box titled "SPEA MEDIA XTC Driver". It contains two main configuration sections: "Wave/SB Configuration" and "Midi Configuration". Each section has three dropdown menus for "Port", "IRQ", and "DMA Channel". At the bottom, there are four buttons: "Advanced Settings...", "OK", "Cancel", and "Help".

Section	Parameter	Value
Wave/SB Configuration	Port	534h
	IRQ	5
	DMA Channel	1
Midi Configuration	Port	330h
	IRQ	9

Buttons: [Advanced Settings...](#), [OK](#), [Cancel](#), [Help](#)

Advanced Settings

This is the advanced driver configuration screen. To select help on a particular option click the mouse on the appropriate area below.



This selection changes the port address of the SPEA MEDIA XTC Wave device. This corresponds to the Wave / SB Port selection made in the Hardware Settings screen of SSINIT. It also must correspond to the JP3 jumper settings on the card itself. The default is 534.

This selection changes the IRQ of the SPEA MEDIA XTC Wave device. It also changes the IRQ used for SoundBlaster emulation. This value corresponds to the Wave / SB IRQ selection made in the Hardware Settings screen of SSInit. The default is 5.

This selection changes the DMA channel the SPEA MEDIA XTC Wave device will use for wave (digital audio) data transfer. It also changes the DMA channel used for SoundBlaster emulation. This value corresponds to the DMA selection made in the Hardware Settings screen of SSInit. The default is 1.

This selection changes the port address of the SPEA MEDIA XTC synthesizer and MPU-401 compatible MIDI interface. This value corresponds to the MIDI Port selection made in the Hardware Settings screen of SSInit. It also must correspond to the JP2 MIDI Port address jumper setting on the card itself. The default is 330.

This selection changes the IRQ of SPEA MEDIA XTC'S synthesizer and MPU-401 compatible MIDI interface. This value corresponds to the MIDI IRQ selection made in the Hardware Settings screen of SSInit. The default is 2.

This option enables or disables the SPEA MEDIA XTC card in a DOS shell under Windows. Generally, you will want this option enabled. Disable it if you have a DOS program that uses sound and you wish to use it in conjunction with a Windows program that also has sound.

This option allows you to change the size of the DMA buffer allocated to the SPEA MEDIA XTC driver. Generally, a DMA buffer size of 32 is acceptable. If you are doing large amounts of digital audio playback or video playback increasing this value may yield better performance.

This option toggles the DMA mode from Single to Demand Mode. Demand mode DMA is used for compatibility with certain motherboards. If digital audio playback is not working turn off Single Mode DMA.

[BLANK PAGE]

