

Sheetfed Gray Help Contents



[Main Window](#)

Explanations on how to use the scanner interface



[Operating the Sheetfed Scanner](#)

Instructions on how to insert and scan documents

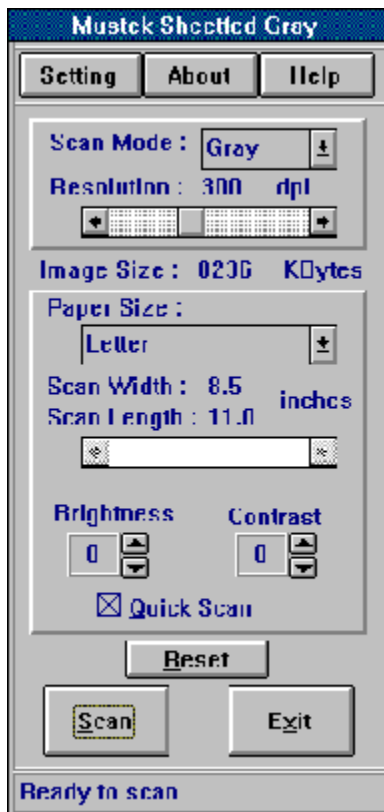


[Tips for using the Sheetfed Scanner](#)

Information to help you scan more efficiently

Main Window

Please click any element in the dialog box for an explanation



Setting

There are three functions to choose from when you click **Setting**:

Select **Save Setting** if you wish to save settings you made in the **Sheetfed Gray** dialog box.

Choose **Load Setting** if you want to load previously saved settings.

Language Setting lets you select the desired language you wish to work in.

Scanner Calibration recalibrates your scanner. It is only necessary to choose this function after you have used your scanner for a long period of time and the images have become gradually darker.

About

Contains copyright information about this version of [TWAIN Data Source](#).

Help

Click Help for an explanation of how to use TWAIN Data Source.

Scan Mode

Click the Scan Mode drop-down menu to select your scan mode.

Gray

Images scanned in Gray mode show up to 256 shades of gray.

Line-art/Text

This mode is best used for scanning text for conversion to word processing formats (OCR) or scanning black-and-white art work.

Resolution

Click the **Resolution** scroll bar to select your resolution.

Resolution can be set from 100-600 [dpi](#). Images scanned at a higher resolution contain more detail but consume more of your RAM and disk space. The recommended setting for scanning text is 300 dpi.

Image Size

Displays the amount of disk space your scanned image will occupy.

Paper Size

Click the **Paper Size** drop-down menu to select your paper size.

If you want to make your own size, select **Custom** and use the scroll bar to adjust the paper length.

Brightness

Click the arrows to adjust the [brightness](#) of your image.

Contrast

Click the arrows to adjust the [contrast](#) of your image.

Reset

This resets all of your scanner's present settings to the previously loaded setting.

Quick Scan

The **Quick Scan** option is for use only when scanning in Gray mode. Check the **Quick Scan** box if you desire a faster scanning speed and do not mind slightly reduced clarity on the edges of your scan. Do not check the **Quick Scan** box if you want full clarity for your entire scan at a reduced scanning speed.

Scan

Click **Scan** or push the **Start /Stop** button on the right side of the sheetfed scanner to begin scanning.

Exit

Click the **Exit** button to close the dialog box.

Operating the Sheetfed Scanner

For the best possible image scans, it is important that you position your documents correctly and carefully. Procedures for document positioning are as follows:

1. Position the slide guides on the alignment marks for the paper size that you wish to use.
2. Pull out the paper tray under the door of the scanner.
3. Place the document upside down in the paper guide with the text facing away from you. The procedure is the same for multiple documents (max. 10 pages).
4. Click **Scan** in your scanning program or press the **Start/Stop** button on the right side of the scanner.

Tips for using the Sheetfed Scanner

To avoid paper jams, the sheets making up the document stack should be of the same size

Make sure you adjust the slide guides until they touch the side of the paper.

Do not open the scanner door while scanning

Do not move your mouse during a scan since this may affect image quality

To prevent paper jams, make sure the paper is properly aligned and not loaded at an angle.

dpi

The resolution measured in number of dots per inch of a device used to display images or text (scanner, monitor, printer).

brightness

The amount of whiteness in an image. A pure white image has maximum brightness, whereas a pure black image has minimum brightness.

contrast

The range of brightness or gray shades in an image. A high contrast image is a black and white image with no gray shades. A low contrast image shows many midrange gray shades.

TWAIN Data Source

TWAIN Data Source is the software driver for your scanner. Control of the scanner is done by using TWAIN Data Source's scanning functions within another Windows application. You don't have to quit your application to scan, save, and then import the image file.

