

Contents

The following Help Topics are available:



Overview



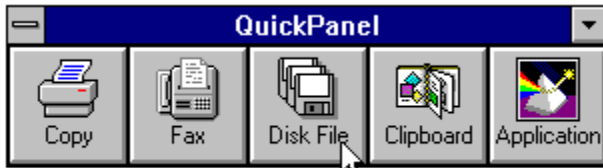
Wizard



HowTo...

Overview

Click the area on which you wish to obtain information.



Untitled Job1 to c:\windows\twain\microtek\scanning.tif

System box

Click on this System box to enter Command Wizard or bring up Select Scanner dialog box.

Bubble help

The Bubble Help message indicates current parameter settings. You can change parameters in Command Wizard.

Copy Preferences

Click the area on which you wish to obtain information.



The image shows a "Command Wizard" dialog box with a blue title bar. On the left is a vertical sidebar with five icons: a printer (Copy), a fax machine (Fax), a floppy disk (Disk File), a clipboard (Clipboard), and a rainbow star (Application). The "Copy" icon is highlighted with a blue background. The main area is divided into three sections: "Command Button:" with a printer icon and a text field containing "Copy"; "Scanning setting:" with a dropdown menu showing "Untitled Job1" and a "Setup" button; and "Output device:" with a dropdown menu showing "Apple LaserWriter Plus on LPT1:" and a "Setup" button. Below these is an "Option:" section with three checkboxes: "Scale to fit", "Center horizontally", and "Center vertically", all of which are unchecked. To the right of the checkboxes is a "Copies:" label and a spinner box containing the number "1". On the far right of the dialog are four buttons: "Close", "Update", "Duplicate", and "Delete".

Command Wizard

Command Button:

 Title: Copy

Scanning setting:

Untitled Job1

Output device:

Apple LaserWriter Plus on LPT1:

Option:

Scale to fit Copies: 1

Center horizontally

Center vertically

Buttons: Close, Update, Duplicate, Delete

Setup

Click on this button to set up your output device.

Selected

This is the selected device in the Command Wizard.

Scanning Setting

This is the name of your scan job in the Scan Job window of the ScanWizard program.

ScanWizard turnkey icon

This is the icon to click for launching ScanWizard for Windows.

Output Device

This is the device selected in Windows Control Panel where your job will be output.

Update

Click on this button to confirm the changes you have made in the Command Wizard dialog box.

Scale to fit

This option determines how your image will appear when it's printed on paper. If this box is checked, the image is resized when printed; the image may be enlarged or reduced to scale to fit the maximum size allowed by the paper.

If unchecked, the image is printed at its normal size; the image will be cropped to fit the paper if the image is larger than the paper on which it's being printed.

Center horizontally

This option centers the image along the horizontal axis of the paper.

Center vertically

This option centers the image along the vertical axis of the paper.

Copies

This option lets you specify the number of copies to be printed.

Duplicate

Click on this button to make a duplicate icon for the QuickPanel.

Delete

Click on this button to delete any of the duplicate icons that have been created. You cannot delete the main command icons (the original Copy, Fax, Disk File, Clipboard, and Application icons).

Fax Preferences

Click the area on which you wish to obtain information.



Disk File Preferences

Click the area on which you wish to obtain information.



Info

This is where the image will be saved.

Browser

Clicking on this button brings up a standard Save box in Windows, where you can specify the path in which the image will be saved (drive and directory, the file format of the image, and other related file-saving information).

File Name Options

This is the place where you can specify directly the path in which the image will be saved; or if you do not wish to input the path directly, click on the Browser icon beside the box for help.

Close

Click on this button to close the Command Wizard dialog box.

Clipboard Preferences

Click the area on which you wish to obtain information.



Format

This is a Windows-related option that allows you to specify how your image is captured and transferred to the Windows clipboard. Select from the options Device Independent Bitmap or Device Dependent Bitmap.

Output Device

This refers to the Microsoft Windows clipboard where the image will be saved.

Copy

Automatically scans a document (image or text) and sends it to a designated printer.

Fax

Scans a document and sends it through your fax software to a designated destination.

Note: For this function to work, you must have installed a PC fax software with its corresponding driver in your computer.

Disk File

Scans a document (image or text) and saves it to a designated directory in your hard drive as an image file.

Clipboard

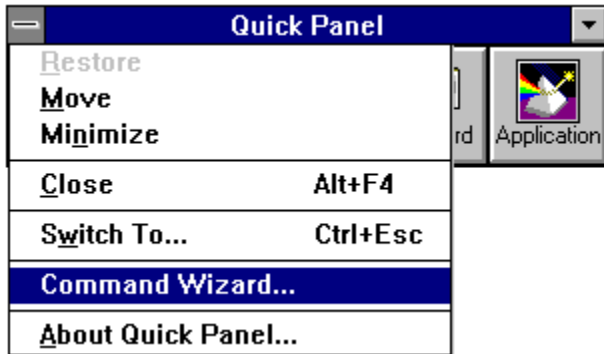
Scans a document (image or text) and sends it to the Microsoft Windows clipboard.

Plugged-in Application

Automatically opens an image-editing application (such as Adobe Photoshop) from where an image can be acquired for scanning. You can assign the application of your choice to this icon.

System box

Click on the System box to call up the Command Wizard (for setting up your parameters) or to exit the QuickPanel.

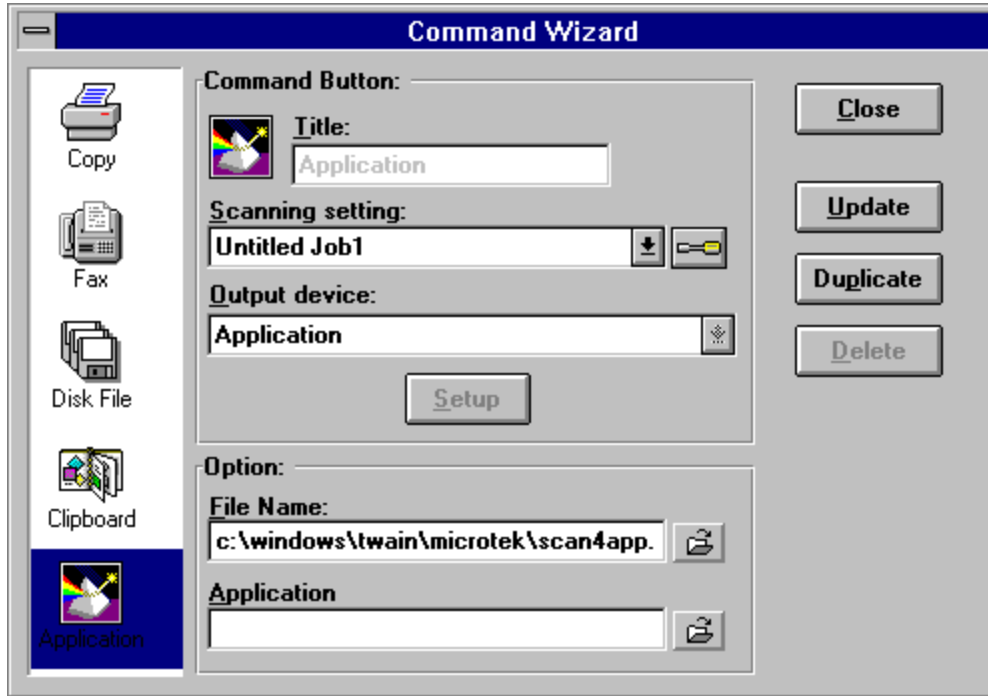


Command Wizard

Select this command to set your Command Wizard preferences.

Application preferences

Click the area on which you wish to obtain information.



Application Information

This area displays a message: application.

Application directory

This is the place where you specify the path for the application name. When you scan one or more documents, the documents will be opened in this application.

If you do not wish to input the path directly, click on the Browser icon beside the box for help.

Option file name

This is the place where you can specify the file name for scanned-in images. The first scanned image file name is Scan4app.tif. The following file names are in the order of Scan4ap0.tif, Scan4ap1.tif, Scan4ap2.tif, and so forth to Scan4ap9.tif. If over 10 documents are scanned, the file name begins with Scan4a00.tif, Scan4a01.tif, and so forth to Scan4a09.tif, etc.

Browser button

This is the Browser icon for your locating the application directory.

How to

- ▶ Set preferences to a device icon.
- ▶ Duplicate a device icon.
- ▶ Use the PC fax device icon.
- ▶ The QuickPanel device icons appeared garbled. How to solve this?
- ▶ The default Application device icon is not the one I need. How do I add the Application device icon?
- ▶ How to solve the "TWAIN error detected, unable to continue" problem?
- ▶ Scanner not ready.

How to set preferences to a device icon

1. Drag the System menu from the QuickPanel, then choose Command Wizard. The Command Wizard dialog box appears.
2. Click on the device icon (such as Copy) which is at the top left corner. Both the Command Button and Options windows display current parameter settings of the Copy command.

How to duplicate a device icon

Duplicating the Copy icon will have the effect of creating an additional Copy icon in the QuickPanel (aside from the original). You may wish to have two Copy icons if you have two printers, with each Copy icon corresponding to a particular printer and its own parameters.

To duplicate the Copy icon:

1. Click on the QuickPanel System box. From the menu that appears, choose Command Wizard.
2. When the Command Wizard dialog box appears, click on the Copy icon.
3. Click on the Duplicate button, and give a new name in the Title box to the duplicate icon. For example, you can name the duplicate Copy icon Copy 2.
4. Click on the Output Device box and select an output device that's different from the one used by the original Copy icon.
5. Click on the Close button. The duplicate icon then appears in the QuickPanel.

The above procedure applies for duplicating the other QuickPanel icons (Fax, Disk File, and Clipboard).

How to use the PC fax device icon

1. Click on the QuickPanel System box, and from the menu that appears, choose Command Wizard.
2. When the Command Wizard dialog box appears, click on the Fax icon.

Note: If you are unable to suitable fax program, click on the Close button, then go the Windows printer module of the control panel, and add your fax specifications to the control panel as a printer.

Device icons garbled

Situation: The QuickPanel device icons appeared garbled.

Solution: This happens when you duplicate too many icons. To resolve this:

1. Exit Windows.
2. Change to the directory that contains the QuickPanel. exe utility.
3. Delete the QPICON.PAR file.
4. Launch Windows and restart QuickPanel. You will have to rebuilt your QuickPanel parameters and icons.

Unexpected Application device icon

Situation: The default Application device icon is not the one I need. How do I add the Application device icon that I need?

Solution: Follow these steps:

1. Choose Command Wizard from the QuickPanel System box.
2. When the Command Wizard dialog box appears, click on the Application icon along the Toolbar section on the left side of the dialog box.
3. When the parameters of the Application icon appear, click on the Browser icon (the folder beside the File Name box).
4. When the Browser dialog box appears, choose the application program to be called up (usually an executable .EXE program).
5. Click on the *Update* button to save your settings, then click on the *Close* button to close the Command Wizard dialog box. An application icon representing your chosen application will then appear in the QuickPanel.

TWAIN error detected, unable to continue

Situation: This error may arise if you installed more than one Twain-compliant scanning module and did not choose the module you need in the Select Source command.

Solution: Check your scanner power, check to see if there is any SCSI number conflict, and your cable connections. Other possible cause is, you may have selected the wrong scanner. If so, follow these steps to fix:

1. Choose *Select Scanner* from the QuickPanel System box.
2. When the Select Scanner dialog box appears, choose *Microtek ScanWizard*.

Scanner not ready

Situation: This error usually occurs when ScanWizard cannot establish communication with your scanner.

Solution: Make sure you can scan from within an image-editing application first before trying to use the QuickPanel. If the same problem still occurs, refer to the main troubleshooting section in the manual for details on how to resolve communication errors.

