

Contents

The following help topics are available:



Overview



Wizard



HowTo...

Overview

Click the area on which you wish to obtain information.



System box

Click on the System box to enter the Command Wizard or to bring up the Select Scanner dialog box.

Bubble help

The Bubble Help message indicates the current parameter settings. Parameters can be changed in the Command Wizard.

Copy

Automatically scans a document (image or text) and sends it to a designated printer.

Fax

Scans a document and sends it through your fax software to a designated destination.

Note: For this function to work, you must have installed a PC fax software with its corresponding driver in your computer.

Disk File

Scans a document (image or text) and saves it to a designated directory in your hard drive as an image file.

Clipboard

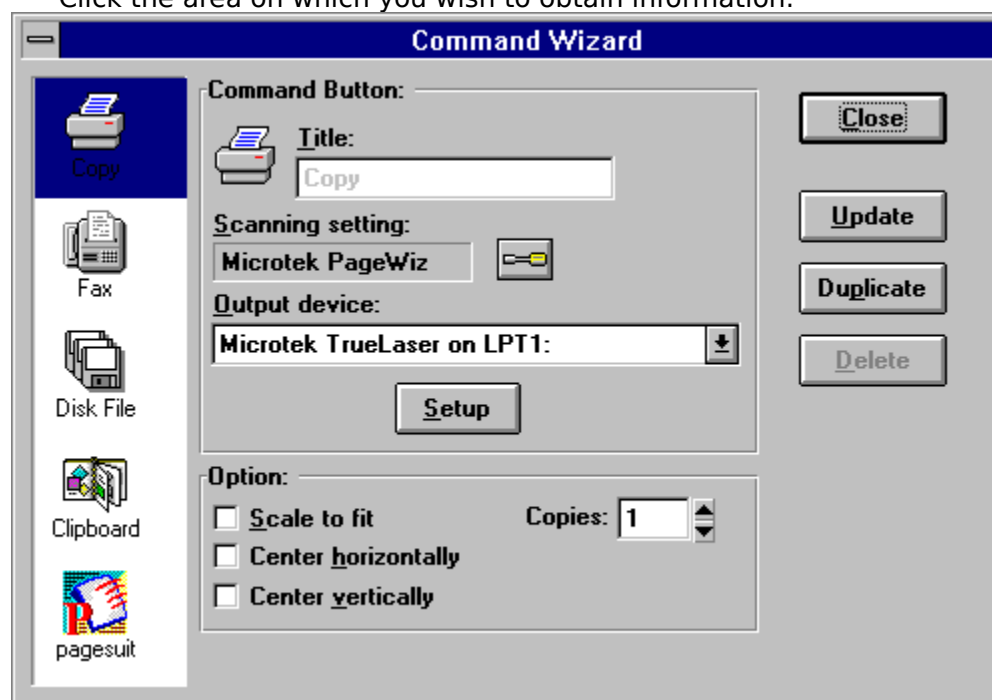
Scans a document (image or text) and sends it to the Microsoft Windows clipboard.

Plugged-in Application

Automatically opens a document management application (such as PageSuite) from where an image can be acquired for scanning. You can assign the application of your choice to this icon.

Copy Preferences

Click the area on which you wish to obtain information.



The screenshot shows a dialog box titled "Command Wizard" with a blue header bar. On the left is a vertical sidebar with five icons: a printer (Copy), a fax machine (Fax), a floppy disk (Disk File), a clipboard (Clipboard), and a document with a magnifying glass (pagesuit). The "Copy" icon is highlighted with a blue background. The main area of the dialog is divided into several sections:

- Command Button:** A label with a printer icon and a text box containing "Copy".
- Scanning setting:** A label, a button labeled "Microtek PageWiz", and a small icon of a scanner.
- Output device:** A label and a dropdown menu showing "Microtek TrueLaser on LPT1:" with a downward arrow.
- Option:** A label, three checkboxes, and a "Copies" spinner box.
 - Scale to fit
 - Center horizontally
 - Center vertically

On the right side of the dialog, there are four buttons: "Close" (with a dotted border), "Update", "Duplicate", and "Delete". A "Setup" button is located below the "Output device" dropdown.

Selected device

This is the selected device in the Command Wizard.

Title

Displays the selected icon command and its name.

Scanning Setting

This is the name of your scan job in the Scan Job window of the ScanWizard program.

PageWiz Controller turnkey icon

Clickon this button to display the PageWiz Setting dialog box for changing your scanning parameters.

Output device

This is the device where your job will be output. The list of output devices is determined by the entries listed in your Microsoft Windows Control Panel.

Setup button

Click on this button to set up your output device.

Scale to fit

This option determines how your image will appear when it's printed on paper. If this box is checked, the image is resized when printed; the image may be enlarged or reduced to scale to fit the maximum size allowed by the paper.

If unchecked, the image is printed at its normal size. The image is also cropped to fit the paper if the image is larger than the paper on which it's being printed.

Center horizontally

This option centers the image along the horizontal axis of the paper.

Center vertically

This option centers the image along the vertical axis of the paper.

Copies

This option lets you specify the number of copies to be printed.

Close button

Click on this button to close the Command Wizard dialog box.

Update button

Click on this button to confirm the changes you have made in the Command Wizard dialog box.

Duplicate button

Click on this button to make a duplicate icon for the QuickPanel.

Delete button

Click on this button to delete any of the duplicate icons that have been created. You cannot delete the main command icons (the original Copy, Fax, Disk File, Clipboard, and Application icons).

Fax Preferences

Click the area on which you wish to obtain information.



Waiting Time

The time within which successive pages must be faxed for the pages to be sent to the same destination. For example, if waiting time is set to 5, you should fax the next page within 5 seconds for the documents to reach the same receiver.

Disk File Preferences

Click the area on which you wish to obtain information.



Output device

This is where the image will be saved.

Browser

Clicking on this button brings up a standard Save box in Windows, where you can specify the path in which the image will be saved (drive and directory), the file format of the image, and other related file-saving information.

Browser

Clicking on this button brings up a standard Save box in Windows, where you can specify the path in which the image will be saved (drive and directory), the file format of the image, and other related file-saving information.

File Name Options


This is the place where you can specify directly the path in which the image will be saved; or if you do not wish to input the path directly, click on the Browser icon beside the box for help.

Clipboard Preferences

Click the area on which you wish to obtain information.

Command Wizard

Command Button:

 **Title:**

Scanning setting:
 

Output device:
 

Option:

Format: 

Close

Update

Duplicate

Delete

Copy

Fax

Disk File

Clipboard

pagesuit

Format option

This is a Windows-related option that allows you to specify how your image is captured and transferred to the Windows clipboard. Select from the options Device Independent Bitmap or Device Dependent Bitmap.

Output device

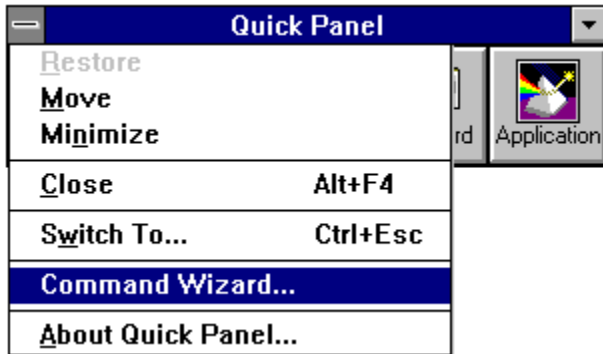
This refers to the Microsoft Windows clipboard where the image will be saved.

System box

Click on the System box to call up the Command Wizard (for setting up your parameters) or to exit the QuickPanel.

Command Wizard

Select this command to set your preferences in the Command Wizard.



Application Preferences

Click the area on which you wish to obtain information.

The screenshot shows a dialog box titled "Command Wizard" with a blue header bar. On the left side, there is a vertical list of icons representing different actions: Copy, Fax, Disk File, Clipboard, and pagesuit. The "pagesuit" icon is highlighted with a blue background. The main area of the dialog is divided into several sections:

- Command Button:** A section containing a "Title:" field with the text "pagesuit".
- Scanning setting:** A section with a dropdown menu set to "Microtek PageWiz" and a small icon of a scanner.
- Output device:** A section with a dropdown menu set to "Application" and a "Setup" button below it.
- Option:** A section containing two fields:
 - File Name:** A text field containing "c:\windows\twain\microtek\scan4app." with a file icon to its right.
 - Application:** A text field containing "c:\pagewiz\pagesuit.exe" with a file icon to its right.

On the right side of the dialog, there are four buttons: "Close", "Update", "Duplicate", and "Delete".

Output device

This area displays the name of the application that is called up when you click on the Application icon.

Application directory

This is the place where you specify the path for the application name. When you scan one or more documents, the documents will be opened by the application.

If you do not wish to input the path directly, click on the Browser icon beside the box for help.

File name

This is the place where you can specify the file name for scanned-in images; the first scanned image file name is Scan4app.tif. If you have purchased the optional Auto Document Feeder, the following file names will be in this order: Scan4ap0.tif, Scan4ap1.tif, Scan4ap2.tif, and so on up to Scan4ap9.tif.

Browser button

This is the Browser icon for your locating the application directory.

How to

- ▶ Set preferences for a device icon.
- ▶ Duplicate a device icon.
- ▶ Use the PC fax device icon.
- ▶ Clear up the QuickPanel device icons if they appear garbled.
- ▶ Change the default Application device icon if it is not what you need.
- ▶ Resolve this error: "TWAIN error detected, cannot continue."
- ▶ Resolve this error: Scanner not ready.

How to set preferences for a device icon

1. Click on the System menu from the QuickPanel, then choose Command Wizard. The Command Wizard dialog box appears.
2. Click on the device icon (such as Copy) for which preferences are to be set. The screens will change to reflect the parameters needed to be set for the device icon that was selected.

How to duplicate a device icon

Duplicating the Copy icon will have the effect of creating an additional Copy icon in the QuickPanel (aside from the original). You may wish to have two Copy icons if you have two printers, with each Copy icon corresponding to a particular printer and its own parameters.

To duplicate the Copy icon:

1. Click on the QuickPanel System box. From the menu that appears, choose Command Wizard.
2. When the Command Wizard dialog box appears, click on the Copy icon.
3. Click on the Duplicate button, and give a new name in the Title box to the duplicate icon. For example, you can name the duplicate Copy icon *Copy 2*.
4. Click on the Output Device box and select an output device that's different from the one used by the original Copy icon.
5. Click on the Close button. The duplicate icon then appears in the QuickPanel.

The above procedure applies for duplicating the other QuickPanel icons (Fax, Disk File, and Clipboard).

How to use the PC fax device icon

1. Click on the QuickPanel System box, and from the menu that appears, choose Command Wizard.
2. When the Command Wizard dialog box appears, click on the Fax icon.

Note: If you are unable to choose a suitable fax program, click on the Close button, then go the Windows printer module of the control panel, and add your fax specifications to the control panel as a printer.

Device icons garbled

Situation: The QuickPanel device icons appeared garbled.

Solution: This happens when you duplicate too many icons. To resolve this:

1. Exit Windows.
2. Change to the directory that contains the QuickPanel.exe utility.
3. Delete the QPICON.PAR file.
4. Launch Windows and restart QuickPanel. You will have to rebuild your QuickPanel parameters and icons.

Unexpected Application device icon

Situation: The default Application device icon is not the one I need. How do I add the Application device icon that I need?

Solution: Follow these steps:

1. Choose Command Wizard from the QuickPanel System box.
2. When the Command Wizard dialog box appears, click on the Application icon on the left side of the dialog box.
3. When the parameters of the Application icon appear, click on the Browser icon (the folder beside the File Name box).
4. When the Browser dialog box appears, choose the application program to be called up (usually an executable.EXE program).
5. Click on the *Update* button to save your settings, then click on the *Close* button to close the Command Wizard dialog box. An application icon representing your chosen application will then appear in the QuickPanel.

TWAIN error detected, unable to continue

Situation: This error may arise if you installed more than one Twain-compliant scanning module and did not choose the module you need in the Select Source command.

Solution: Check your PageWiz power and cable connections. If communication has been established between the PageWiz scanner and your PC, the PageWiz icon should appear at the lower left corner of your screen.

This error may also arise if you selected the wrong scanner. If this is the case, follow these steps:

1. Choose the *Select Scanner* command from the QuickPanel System box.
2. When the Select Scanner dialog box appears, choose *Microtek PageWiz*.

Scanner not ready

Situation: This error usually occurs when PageWiz cannot establish communication with your scanner.

Solution: Make sure you can scan from within an image-editing application first before trying to use the QuickPanel. If the same problem still occurs, refer to the main troubleshooting section in the manual for details on how to resolve communication errors.

