

## **System Requirements**

Your system must meet or exceed the following minimum to use NetView USB PC camera and software:

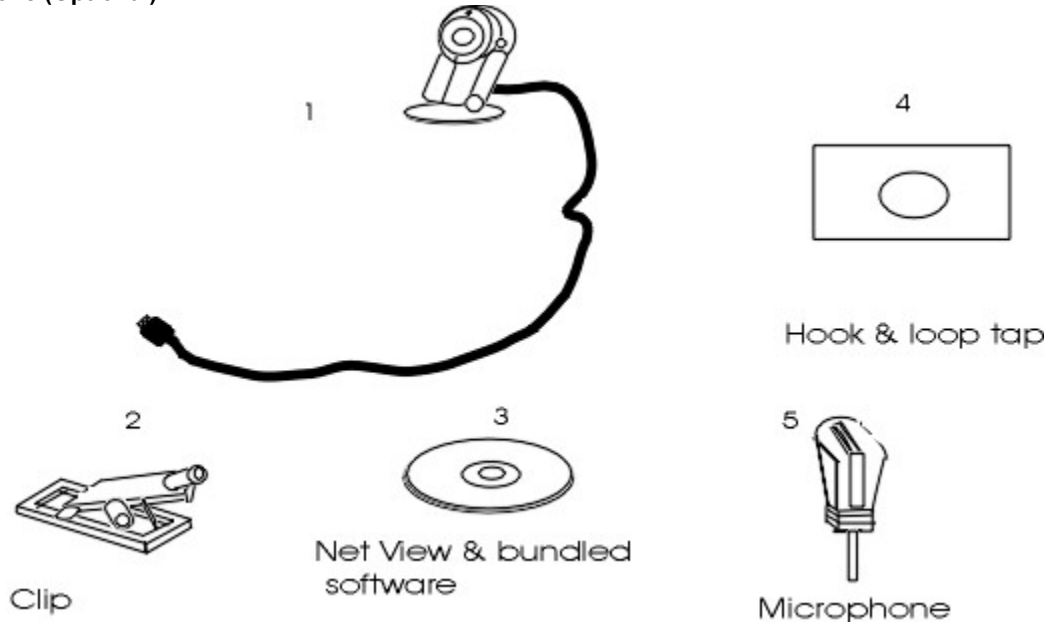
- Windows98 with Pentium processor.
- 32 M RAM and 20 MB free hard disk space.
- High color VGA display or better.
- CD-ROM device for installation of the bundled software.
- Full or half duplex sound card, microphone and speakers are required for audio support.

**Your computer dealer can help you upgrade your system if it does not meet the above requirements.**

## Check Package Contents

Please check your NetView PC camera package for the following items. If any of the items are missing, please contact our company or distributor immediately.

1. NetView USB PC camera unit
2. Clip (Optional)
3. NetView Driver & bundled software
4. Velcro
5. Microphone (Optional)



**Save all packing and protective materials in case you need to transport the PC camera for maintenance later.**

It is included in " The device driver & NetView test program ", " Video-Mail, Card Maker and Album software of Live Express" and " NetMeeting software of Microsoft" On CD-ROM that shipped with your PC camera. The CD-ROM contains the following software:

- **PC camera driver & NetView test program**  
The PC camera driver gives you complete control over your PC digital camera. You can make setting changes such as Saturation, Contrast mode and format. The NetView test program allows you to check the current status of your PC camera. It also provides some functions such as Video format, Preview, Frame rate, Capture single frame and motion frames, Save file and play file etc.
- **Live Express " Video-Mail, Card Maker and Album " software**  
The Live Express- Video-Mail, Card maker and Album can provide some functions such as direct send of Video-mail or Image-mail, Capture single frame and motion frames, photo editor etc.
- **Microsoft " NetMeeting " software**  
The NetMeeting provides videoconference functions via Internet or Intranet.

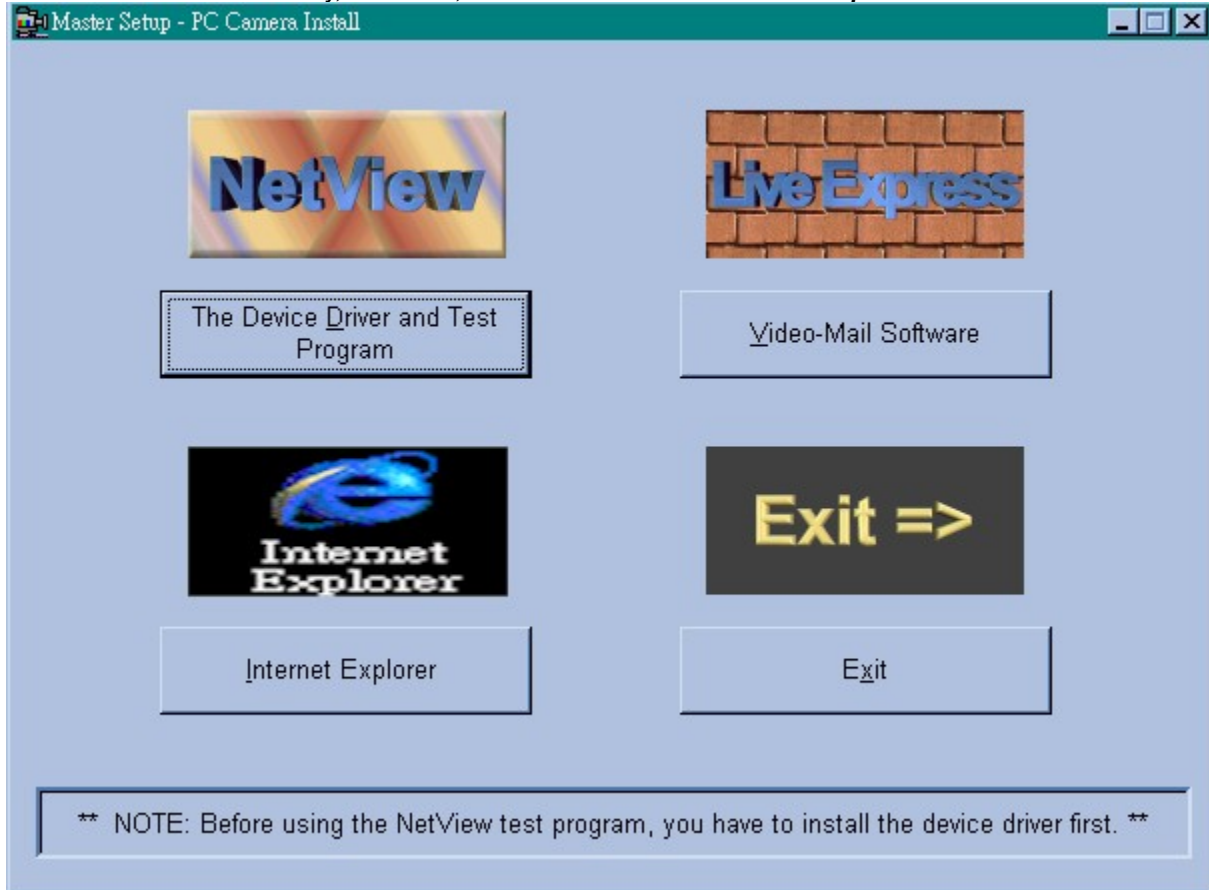
## Installing the NetView test program and WDM driver in your PC

**Note!:** It is necessary to install USB PC camera driver first, then connects PC camera with USB port of PC.

Follow these steps to install WDM driver of the USB PC camera and NetView test program in Windows98

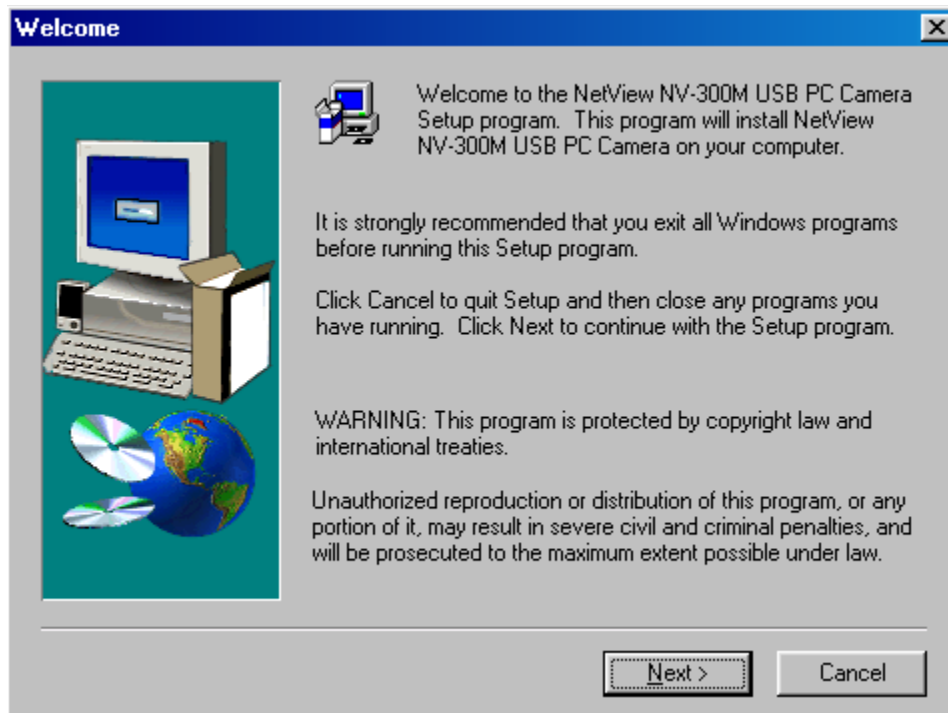
**Step 1** Turn on the computer and begin loading Windows98.

**Step 2** Insert the CD-ROM into your CD-ROM device, the NetView installer should come up automatically and list all the available software. **NOTE:** If the NetView installer does not appear on the screen automatically, click **Start**, then **Run** and execute the file "**Setup.exe**" on the CD-ROM.



**Step 3** Click NetView "The device driver and test program" button. And select "NV-300M PC camera USB Interface".

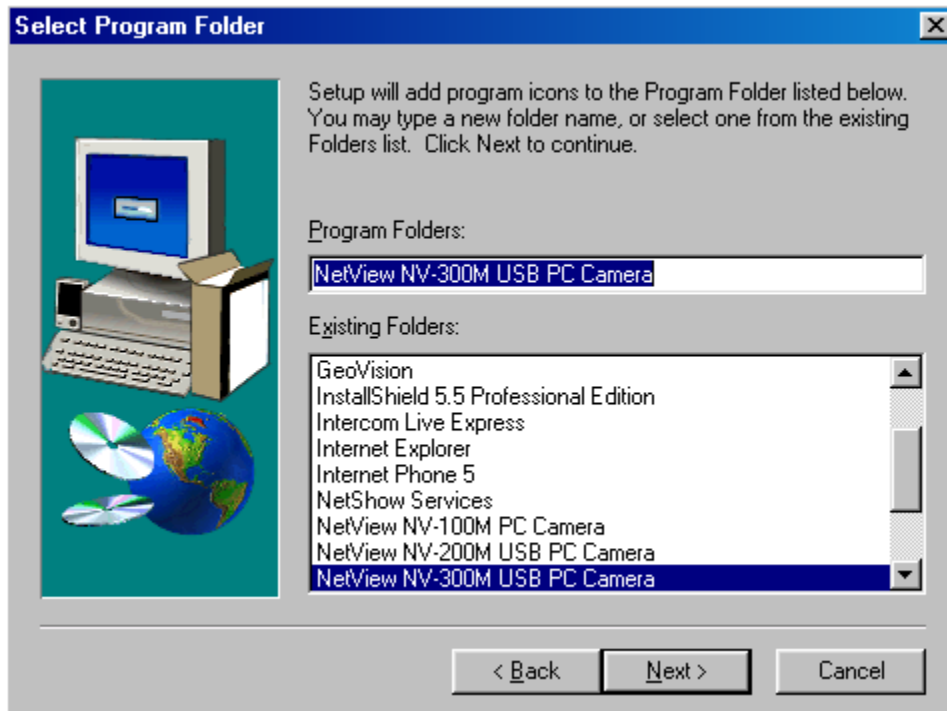
**Step 4** Click **Next**, then start to install.



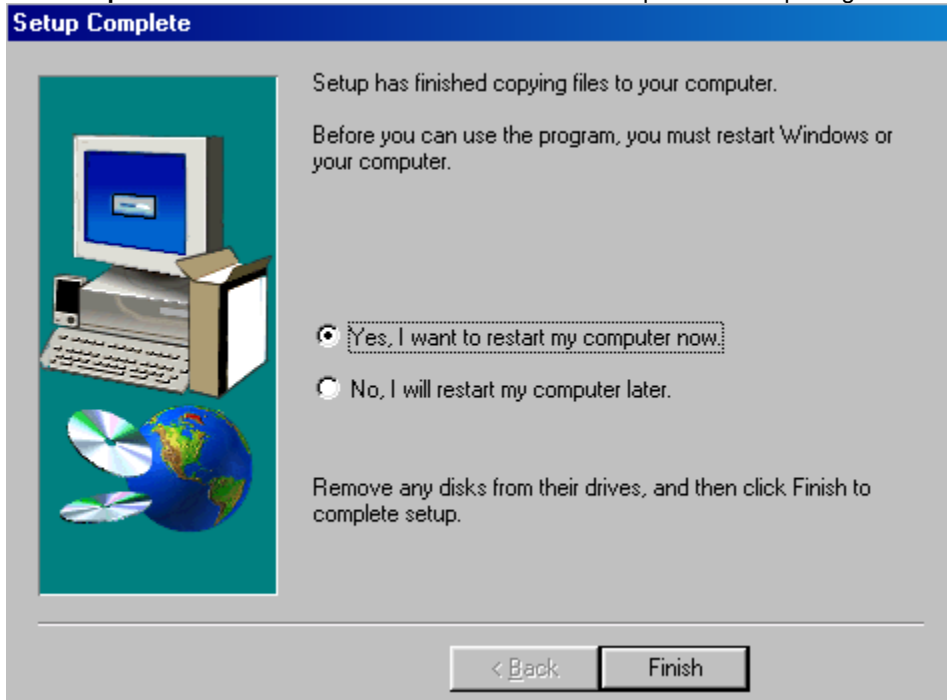
**Step 5** (Optional) Click **Browse** button to change the destination or click **Next** to continue.



**Step 6** Click **Next** to continue.



**Step 7** Press the **Finish** button to restart the computer for completing the installation.

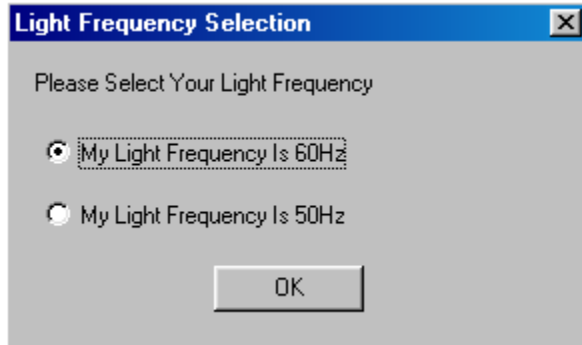


### Installing the TWAIN driver into your PC.

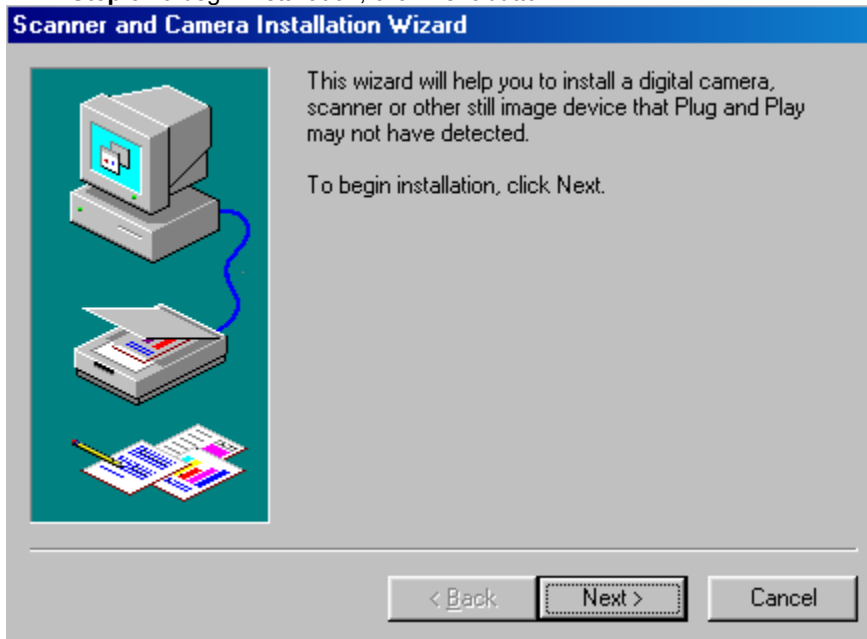
Follow these steps to install the NetView USB PC camera TWAIN driver into your PC

**Step 1** Connects USB PC camera to USB port of PC, then start to install.

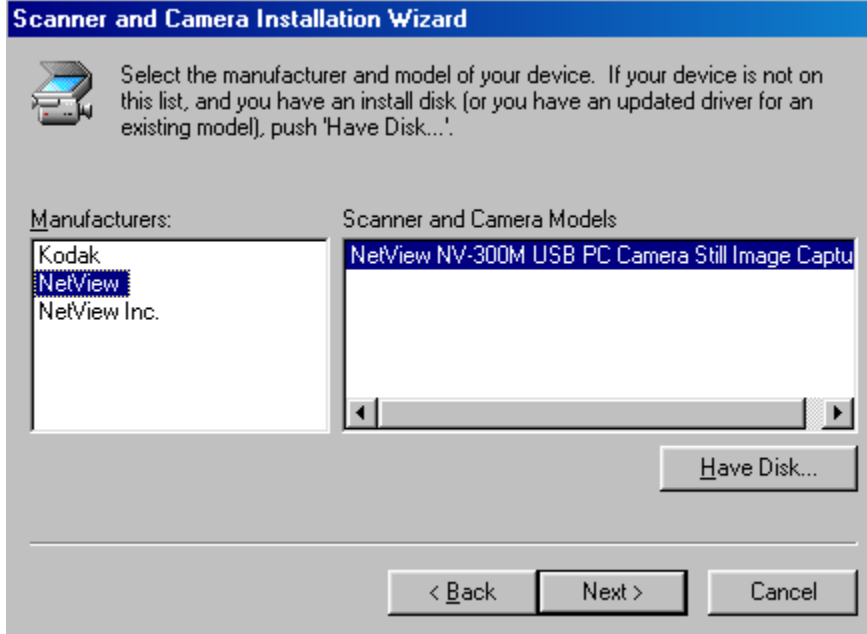
**Step 2** Select your light frequency, then click **OK** button.



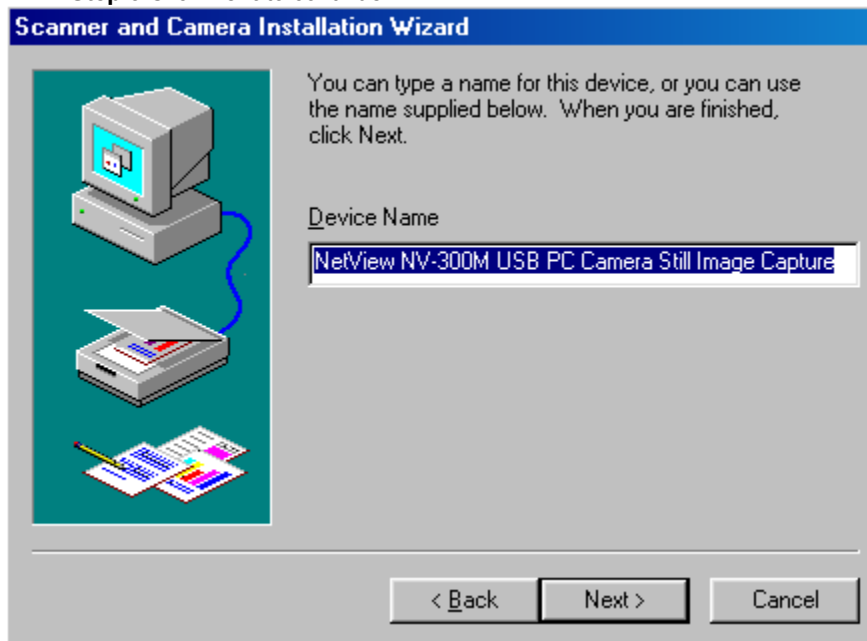
**Step 3** To begin installation, click **Next** button.



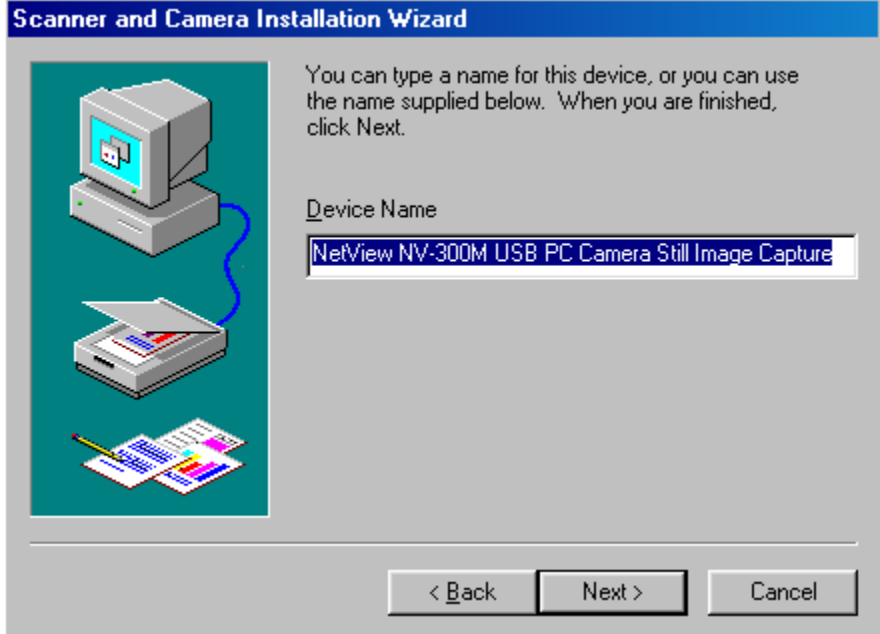
**Step 4** Select the NetView and NV-300M USB PC camera, then click "**NEXT**" button.



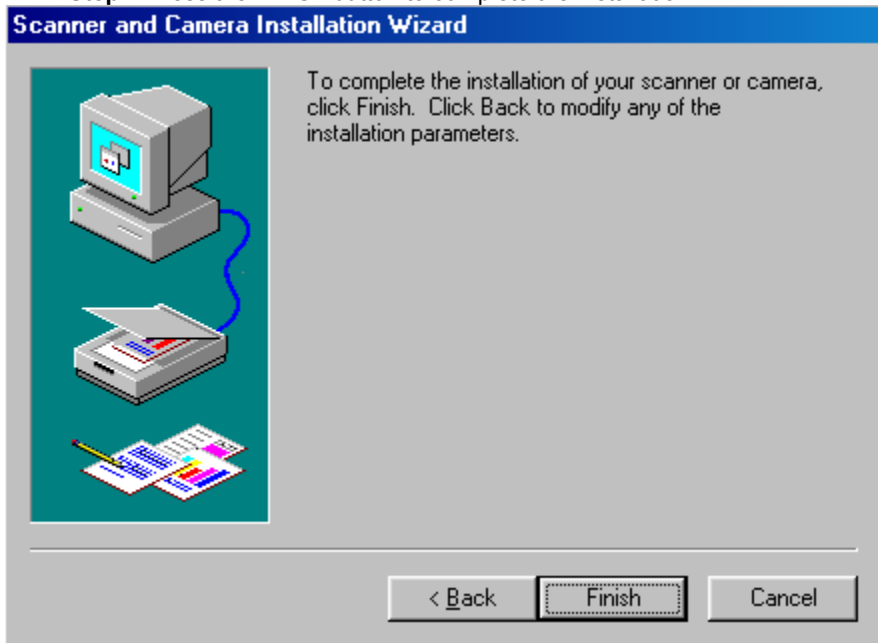
**Step 5** Click **Next** to continue.



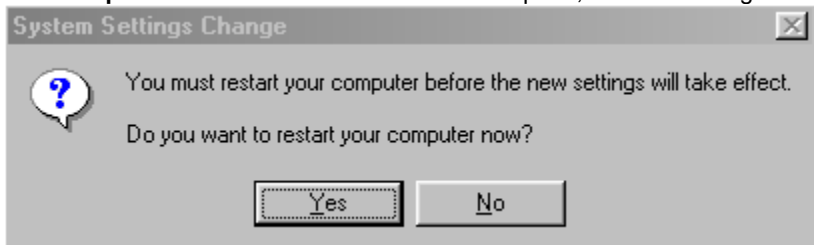
**Step 6** Click **Next** to continue.



**Step 7** Press the **Finish** button to complete the installation.



**Step 8** Press **Yes** button to restart the computer, then the settings will take effect.



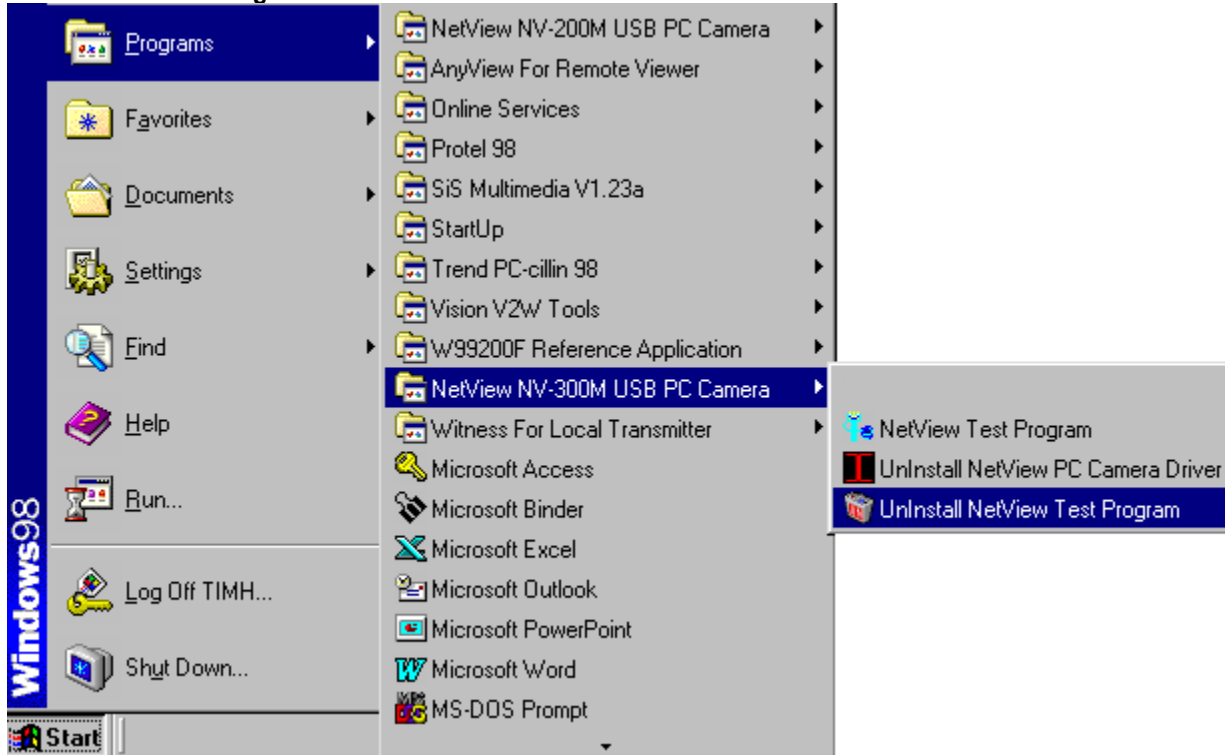


## Uninstallation NetView Test Program

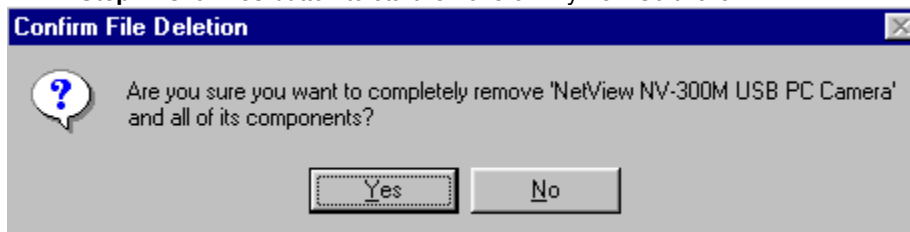
### Remove AnyView software on your compute computer

This Chapter describes remove of AnyView software.

**Step 1:** Click **Start**, **programs**, then select **NetView NV-300M USB PC camera** and click **Uninstall NetView Test Program**.



**Step 2:** Click **Yes** button to start remove of AnyView Software.



**Step 3:** Click **Ok** button to Complete remove of NetView Test Program.

## Remove Programs From Your Computer



unInstallShield will remove the software 'NetView NV-300M USB PC Camera' from your computer. Please wait while each of the following components is removed...

- ✓ Shared program files...
- ✓ Standard program files...
- ✓ Folder items...
- ✓ Program folders...
- ✓ Program directories...
- ✓ Program registry entries...



Uninstall successfully completed.

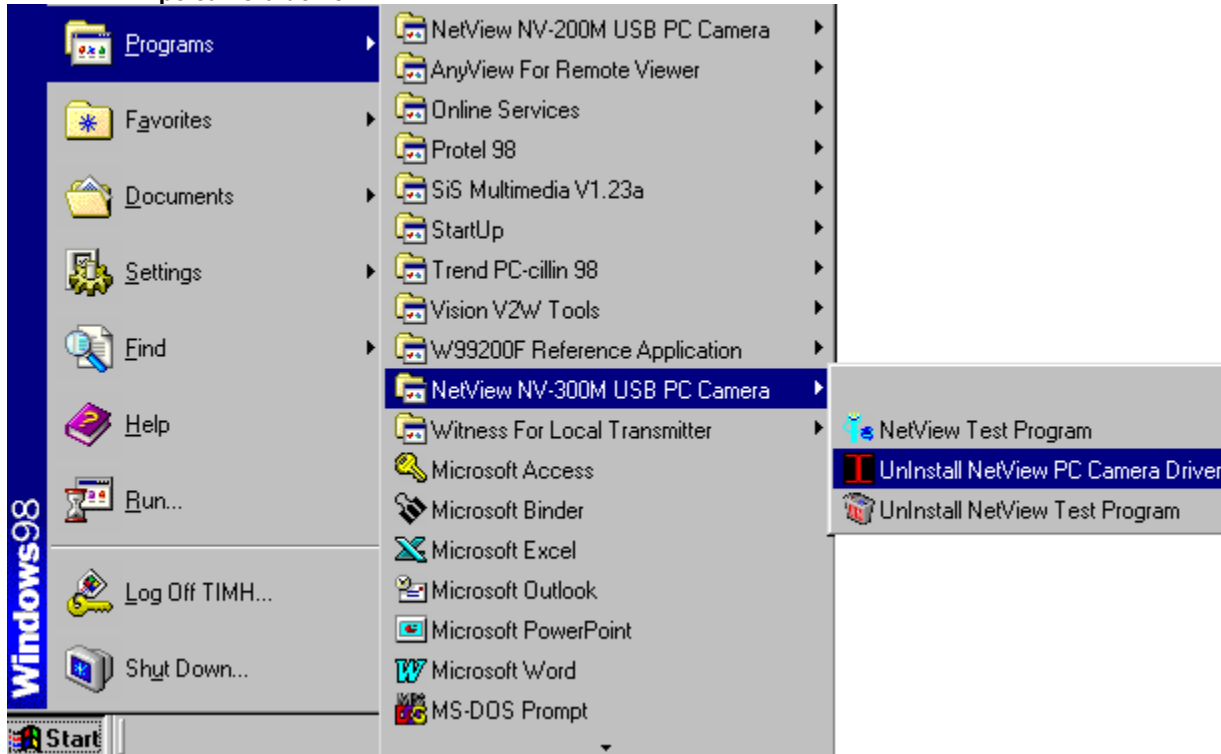
OK

## Uninstallation The NV-300M Driver

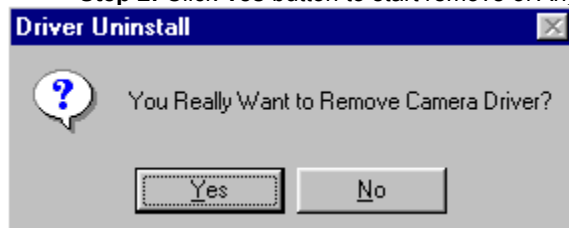
### Remove the NV-300M Driver on your compute computer

This Chapter describes remove of AnyView software.

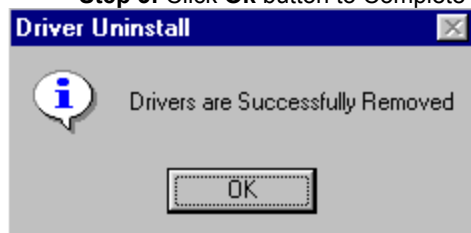
**Step 1:** Click **Start, programs**, then select **NetView NV-300M USB PC camera** and click **Uninstall NetView pc camera deiver.**



**Step 2:** Click **Yes** button to start remove of AnyView Software.

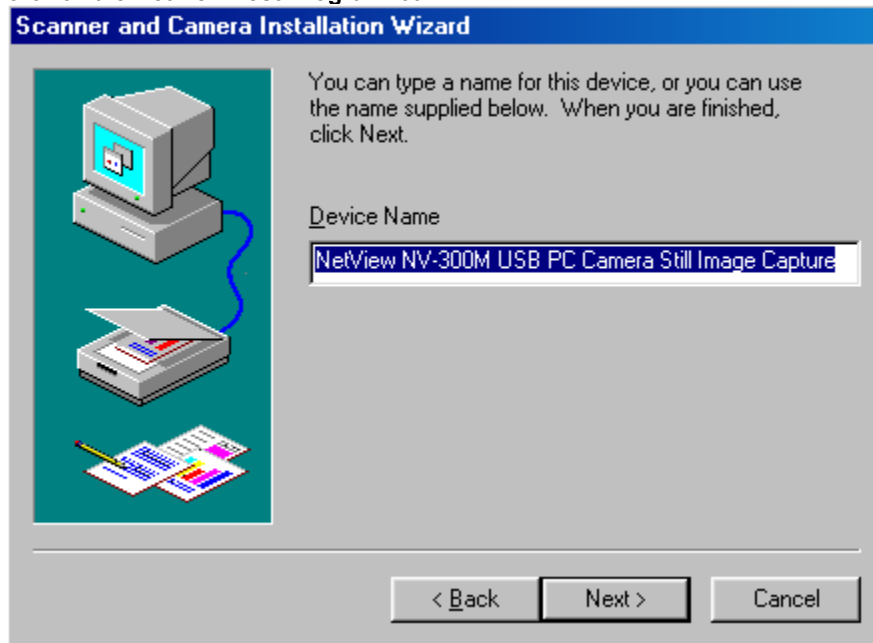


**Step 3:** Click **Ok** button to Complete remove of NetView Test Program.



## Use the NetView Software

Once you have finished installing the software new groups and icons will be created for you. You may access them by clicking on the **start** button and then the **Programs** folder, **NetView NV-300M USB PC camera** Group and finally click on the **NetView Test Program** icon.



### The description of NetView Tools Bar

Before you begin using the NetView test program, it is important that you learn how to use the **Tools Bar**. You may want to experiment with these settings later to optimize setting for your system. More information shows as below.

There are 11 headings on the Toolbar:



**OFF**: Close the **NetView** application

**Minimize**: Click this icon the NetView will minimize the window.

**?** **Online help**: This menu provides important information about the application.

**Video** **Playback Video**: Execute the current recorded video file directly.

If you press the button, the screen will display name of camera for you to select a video file from the camera name list. Before you can play a recorded video, you need to select and open camera name file you want. Then you can click a file to select it and press Play button to play it. Or, just click twice at the targeted file. This file will be played from the input beginning time. The file will show camera channel, location and record time, it is a easy way to find out the video clip that you would like to playback. Before you choose the image file, you can easily preview it on the dialog box. It is so friendly designed.

**Video** **Video**: Click this icon then you can select the other video device to run on the NetView test program.

**Video record**: Active video capture.

**Copy Image**: This button freezes the video image as a photograph. That can be saved as a BMP file or copy it to the Windows clipboard.



**Setup:** The button is designed to change the **format** and **source** of video window. After pressing the button, the following change **format** icon and you will can change the resolution of display window. Select the that you would like to change, then just click the left button of Mouse. This display window will go to change the resolution from 160x120, 176x144, 320x240, 352x288 and 640x480 format. And you also can select **source** icon adjust the color parameter of camera that includes Brightness, Contrast, Hue, Saturation Sharpness Gamma, White Balance and Backlight.



**Test Frame rate:** Enable or disable the function to test frame rate that video souce can be captured.



**Original window:** The button is designed to recover the display image. After pressing the button, the following original window size icon will show up for you to recover the size of display window. Select the video window that you would like to recover, then just quickly click the left button of Mouse. This display window will go to original video size of the window.



**Sequence preview:** Enable or disable the function to increase speed of preview.

# Connecting the NetView USB PC Camera to your PC

Plug USB A type connector into your computer using the USB B type port. **Show as below:**

## Installation Chart

