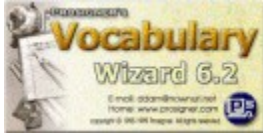


Vocabulary Wizard V6.2



Vocabulary Wizard is a full-featured English vocabulary learning tool for 32-bit Windows 95/98/NT/2000. Click on one of the topics below to find out more.

Overview:

[What is Vocabulary Wizard and what can it do?](#)

[What's new in Vocabulary Wizard 6.2?](#)

Using Vocabulary Wizard:

[Desk & Bookstand screen](#)

[Study screen](#)

[Test screen](#)

[How to create wordlists](#)

[How to record voice](#)

[Miscellaneous](#)

How to register and so on:

[How to register](#)

[License and Copyright](#)

[Other programs from Prosigner](#)

Prosigner:

URL: <http://www.prosigner.com>

E-mail: ddam@nownuri.net

copyright (c) 1998-1999 by Prosigner

What is Vocabulary Wizard and what can it do?

Vocabulary Wizard is a vocabulary learning tool for Windows 95/98/NT/2000. (32-bit) Vocabulary Wizard gives you an *efficient, fast* and *easy* way to study words. It was made for you and your friends or your students or your children who prepare for English vocabulary-related examinations such as the SAT, GRE, ACT, TOEFL, and so on.

Vocabulary Wizard has a built-in dictionary of over 6,000 carefully chosen words that appear frequently on standardized tests. Moreover, you are not limited to these 6,000 words; you can edit the dictionary and even add your own words in it. The data for each word in the dictionary consists of the following 9 components: (*word*), (*pronunciation*), (*part*), (*origin*), (*meaning*), (*2nd meaning*), (*example*), (*2nd example*), and (*reference*). By importing text files, you are able to add wordlists and word data easily.

Each word in the Vocabulary Wizard's dictionary has its own specific attributes: Study Index, Check Mark, and Master Mark. The Study Index of a word indicates how many times you have correctly answered test questions of that word. At the beginning of a test, all the Study Indices of the words are 0. As your study goes on, the Study Index of a word may be changed as a result of your answer. It can have one of the numbers between -3 to +3 as its value. For example, if your answer is correct once, the corresponding Study Index will be +1. If wrong, it will be -1. If you are correct twice, it will be +2. If wrong three times, it will be -3 and so on. But the pattern of updating Study Index is not always proportional to the total counts of the correct answers because Vocabulary Wizard also considers the frequency of the correct answers during updating Study Index. Anyway, if all the Study Indices reach +3, you may think that your study is successful and almost perfect. A *Check Mark* of a word can be given or removed by you. If you find an unfamiliar word or a word to review more, you can add a Check Mark on it for later use. By doing this, you can collect the words with Check Marks exclusively and study them in an intensive way. You can even save them into a special wordlist and print it on paper. A *Master Mark* of a word is the opposite of a Check Mark. If you already know a word very well, you can give a Master Mark to it. After that, it will be considered as a trivial word that you don't have to study any more. Vocabulary Wizard usually ignores the words with Master Marks while creating test questions. Of course, you can remove the Master Mark at any time. In order to enhance your vocabulary power faster than before, you should concentrate on the words whose Study Indices are below 0 (i.e. -1, -2, -3.) and which have Check Marks.

Vocabulary Wizard offers three screens: the Desk, Study, and Test screens.

In the Bookstand of the *Desk* screen, you can pick wordbooks or wordlists you wish to learn and then put them on the Desk. This is the first step for preparing your study. After setting up the Desk, you can go to the Study screen or the Test screen.

In the *Study* screen, Vocabulary Wizard presents you with a flashcard slide-show of words. It gives you a variety of options to customize your study. You can adjust the display frequency. You can make some components visible or invisible on the screen. You can even extract only the words with a specific Study Index or a Check Mark from the Desk. You can also view the wordlist sorted by a specified order. As mentioned above, you can save and print wordlists easily. You can insert the saved wordlist as a new wordlist into the Bookstand.

In the *Test* screen, Vocabulary Wizard generates various test questions from the wordlists on the Desk. In the test option dialog box, you can choose a test style and the attributes (a Study Index, a Check Mark, and a Master Mark) of the words for the test. There are three test styles: Test1 (word-to-meaning multiple choice), Test2 (meaning-to-word multiple choice), and Test3 (spelling exercise). You can make Vocabulary Wizard present questions only for the words whose Study Indices are below 0. You can refer to the dictionary at any time for your further study. You can even print a series of questions and corresponding answers into plain text files.

Vocabulary Wizard records your voice.

Not only to enhance your visible ability, but also to develop your audible skill, Vocabulary Wizard provides the feature of voice recording. With a microphone connected to a PC sound card, you can record your own voice pronunciation into the Vocabulary Wizard's voice dictionary. The recorded voice will be

automatically re-played when it is needed. Moreover there is a specific test option that enables Vocabulary Wizard to present voice questions. You can even replace the registered voice with a new one. By importing audio files from outside, a great deal of voice pronunciations can be registered in the dictionary at a time.

Sounds complicated? Don't worry. Vocabulary Wizard is also easy to use. You can quickly learn how to navigate from screen to screen, and Vocabulary Wizard offers a variety of keyboard and mouse shortcuts and a nice toolbar. If you get into trouble or can't figure out how to do something, just look at these Help topics, or send an email to ddam@nownuri.net. Vocabulary Wizard is quite the thing! Once you've studied with it for a while, you'll see how much it can help you prepare for exams.

See also:

[What's new in Vwiz 6.2?](#)

What's new in Vocabulary Wizard 6.2?

A Pure 32-bit Application

Vocabulary Wizard 6.2 runs faster and more safely than ever. Now it doesn't support the 16-bit Windows platforms like Windows 3.1. It works on 32-bit Windows such as Windows95, 98, NT, and 2000.

Easy to Create Your Own Wordlists!

Since the format of wordlist file (*.WLF) has been changed from a binary format to a simple ASCII text format, it gets easier and more intuitive to build up your own wordlists than before. Just type your wordlist with a text editor and save it as *.WLF file. Or use the built-in editor, 'Wordlist Editor' in Vocabulary Wizard 6.2.

Voice Recording

You can record your voice pronunciations into the Voice Dictionary. Every voice pronunciation in the dictionary will be played at proper moments and even will be used as voice questions. This feature will be a great help to enhance your vocabulary skill.

One-Click Popup Reference

When you want to get the meaning of a certain word, right-click the word on the screen. Then Vocabulary Wizard 6.2 searches the most similar word in its Dictionary and shows the meaning in a pop-up (tool-tip) window.

Improved Graphic User Interface

Vocabulary Wizard 6.2 has been featured with new advanced buttons, icons, background images and modeless dialog boxes.

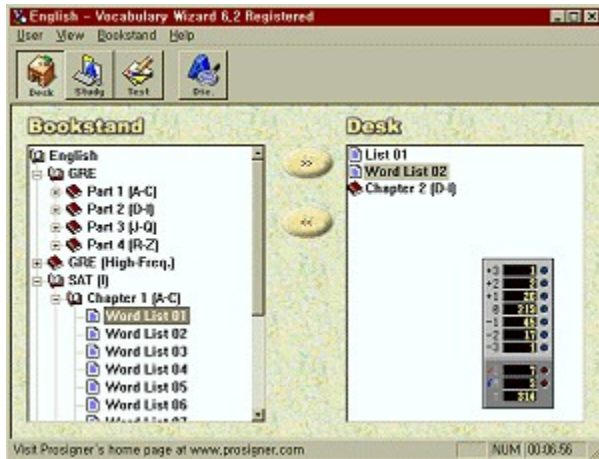
Setup and Uninstall Program

Newly developed uninstall program will be provided as well as a setup program. All you have to do for installing and uninstalling Vocabulary Wizard is to run these programs.

See also:

[What is Vwiz?](#)

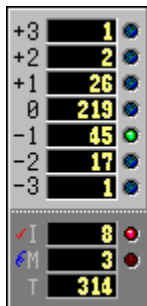
Desk & Bookstand Screen



In the **Desk** screen, Vocabulary Wizard lets you prepare your vocabulary study. You can also create new wordlists and edit existing wordlists in the Bookstand.

Basic Procedures:

- Select a workbook or a wordlist that you wish to study in the Bookstand. The Bookstand is featured as a tree structure like the left pane of Windows' Explorer. Double-click a workbook if you want to unfold or fold it. To edit a wordlist, select it, and then press Alt+Enter. If you right-click a workbook or a wordlist, a pop-up menu will appear.
- Click >> button. The selected workbook or wordlist will be loaded on the Desk. In order to unload a workbook (or a wordlist) from the Desk, select it and click << button. By pressing INS key or ctrl-clicking on workbooks and wordlists, you can get them selected in the Bookstand. You can load and unload as many workbooks (wordlists) as you want at the same time.



- LCD panel shows you the statistics of study record about the workbooks (wordlists) on the Desk. Those numbers indicate how many words have a certain Study Index (-3,-2,-1,0,+1,+2,+3) or a Check Mark or a Mater Mark in the Desk. Even if a word is included more than twice in the Desk, it will be counted only once in the statistics.

- Now, are you ready? Go to the **Study** screen or the **Test** screen!

See also:

[How to create wordlists](#)

How to Create Wordlists.

There are several ways to create your own wordlists. The following instructions will help you to get started.

General Information:

- 1 Be aware of these two words: **Wordlist & Wordbook**. A 'Wordlist' is a text file that has word entries in it. (One word per line.) Its extension is '.wlf', meaning 'Wordlist File.' A 'Wordbook' is a folder (or a directory) that contains wordlists and sub-wordbooks in it. By default, the root folder (i.e. the root wordbook) is the '**English**' directory which is located in Vocabulary Wizard's directory.



- 2 With Vocabulary Wizard's built-in editor, '**Wordlist Editor**' or any kind of text editor like Notepad, you can create and edit wordlists. If you create wordlists outside Vocabulary Wizard, make sure to put them in appropriate folders. At this point, you should be careful to distinguish these two editors: **Wordlist Editor & Word Editor**. In the Wordlist Editor, you can type word entries to create or update a wordlist. (One word per line.) In the Word Editor, you can input and edit the components of a word: Spelling, Pronunciation, Part of speech, Origin, Meaning, 2nd Meaning, Example, 2nd Example, and Reference.
- 3 In Vwiz, you can study '**registered**' words only. Before you study a wordlist, all the words in the list should be registered in Vwiz's dictionary. This means that those words must exist in Vwiz's vocabulary database. Even if a word exist in a wordlist (i.e. a text file), you cannot study the word that has not been registered. How can you check if a word is registered or not? If you can find a word in the current Vwiz's dictionary, that is a registered word. If you can't, then it is an unregistered word. How can you register a word in Vwiz's dictionary? Just open the dictionary, and type the new word in the Find edit-box, and then click the **[R]** (Register) button to open Vwiz's Word Editor. In the Word Editor, you can add its components and save them.

Creating a new wordlist:

Assume that:

- We are going to create a new wordlist, 'Fruits' in 'English' wordbook.
- The wordlist, 'Fruits' will consist of 4 words: apple, banana, grape, and melon.
- Among the above words, the word 'grape' has been already registered in Vwiz's Dictionary. (i.e. it is a registered word.) Other words are unregistered words.

- 1 In the Desk & Bookstand screen, select the 'English' wordbook.
- 2 On the **Bookstand** menu, point to **New**, and then click **Wordlist**. The new wordlist appears with a temporary name. You can right-click the selected wordbook to bring out the same pop-up menu on the screen.

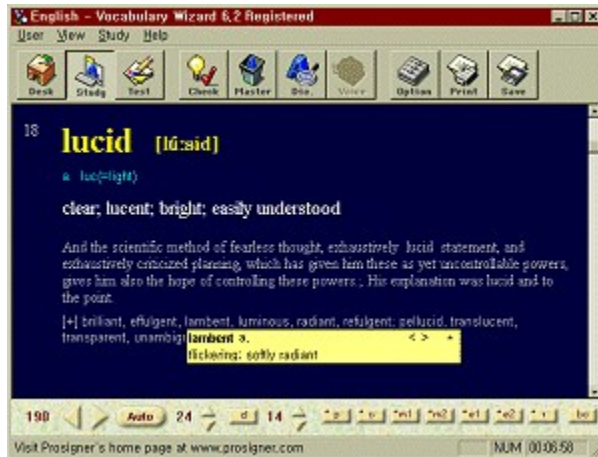
- 3 Type the name, 'Fruits' for the new wordlist, and then press ENTER.
- 4 To open Vwiz's Wordlist Editor, click the **Edit Wordlist** item on the **Bookstand** menu. Or right-click the wordlist and click the Edit Wordlist in the pop-up menu. Or press Alt+Enter, when the wordlist is currently selected.
- 5 In the Wordlist Editor, type the word entries like the following: (One word per line.)
 - apple**
 - banana**
 - grape**
 - melon**
- 6 Double click the word, 'apple' to open Vwiz's Word Editor. Or locate input cursor (i.e. caret) on it and click **[E]**(Edit) button.
- 7 In the Word Editor, fill in the components of the word, and then click **Save**.
- 8 Repeat step 6 and 7 with banana, melon. Because the word, 'grape' has been registered by the assumption, you don't have to open the Word Editor.
- 9 Click **[S]**(Save) button, and then close the Wordlist Editor.

See also:

[Using the Dictionary](#)

[How to use Memo Pad](#)

Study Screen



In the **Study** screen, Vocabulary Wizard presents you a flashcard slide-show of words that come from the wordlists on the Desk. By the Study Options you can decide which kind of words will be shown in the screen. You can set slide-show parameters (e.g. frequency, delay of word's meaning display, visibility of word's components) as you want. After setting the options, you can play the slide-show automatically or manually. You can even print the wordlist on paper. Vocabulary Wizard gives you comfortable ways to review words and check your knowledge of them as fast as possible.

Basic Procedures:

- In the **Study Options** dialog box:
 - Select a wordlist source and the attributes of the words to be shown.
 - Select a method by which the words are sorted.
 - Set the other options.
 - Click **OK** button.
 - Based on the above settings, Vocabulary Wizard creates a temporary wordlist for a slide-show.
 - The first word of the wordlist will be displayed on the screen.
- Click **>** button or press **RIGHT** arrow key or right-click to see the next word.
- Click **<** button or press **LEFT** arrow key or left-click to see the previous word.
- You can specify visible components of a word through the toggle buttons at the bottom of the screen. (See below.)
- You can adjust the frequency of a slide-show on the fly.
- If you find an unfamiliar word, add a Check Mark by clicking **Check Mark** on the toolbar or pressing **INS** key.
- If you want to remove a word from the current wordlist, press **DEL** key. This action is different from adding a Master Mark.
- By clicking **Auto**, Vocabulary Wizard play the slide-show automatically. To stop it, click **Stop**.
- If you right-click on any word in the screen, Vwiz will search for the word in the Dictionary and show you a closest word and its meaning in a pop-up window.

Controls (Numbers and Buttons) at the bottom of the screen:



Number (left)	Indicates the total number of the words in the current wordlist
[<]	Goes to the previous word
[>]	Goes to the next word (step)
[Auto/Stop]	Plays automatically or stops the slide-show
Number (middle)	Indicates the interval time between a word and a word in 0.1 second unit (you can adjust this number by clicking the up/down arrow buttons next to it.)
[d]	Delays displaying word meanings, examples, and references
Number (right)	Indicates the interval time between showing a word spelling and showing the rest of its components (you can adjust this number by clicking the up/down arrow buttons next to it.)
[p]	Makes (pronunciation) visible or invisible
[o]	Makes (origin) visible or invisible
[m1]	Makes (meaning) visible or invisible
[m2]	Makes (2nd meaning) visible or invisible
[e1]	Makes (example) visible or invisible
[e2]	Makes (2nd example) visible or invisible
[r]	Makes (reference) visible or invisible
[bc]	Leads a user to change the background color of the screen

Keyboard and Mouse:

INS	Adds a Check Mark or removes it
DEL	Removes a word from a slide-show wordlist
Ctrl+I	Adds a Check Mark or removes it
Ctrl+M	Adds Master Mark
Alt+O	Displays the Study Options dialog box
F5	Plays voice pronunciation
LEFT	Goes to previous word
RIGHT	Goes to next word
DOWN	Goes to next word (step)
ENTER	Goes to next word (step)
SPACE	Goes to next word (step)
RIGHT (MOUSE)	Refers to the pop-up dictionary or goes to next word (step)
LEFT (MOUSE)	Goes to previous word.

See also:

[Printing a wordlist on paper](#)

[Saving a wordlist](#)

[Inserting words to a wordlist](#)

Printing a wordlist on paper

You can print the current wordlist of the Study screen on paper.

- 1 Click **Print Wordlist** on the **Study** menu, or click **Print** on the toolbar.
- 2 Select the printing items, the number of columns, the size of font, margins, and header.
- 3 On the **User** menu, if you click **Printer Setup**, you can select the output printer and the paper size, etc.
- 4 To preview, click **Preview**. To print, click **Print**.

See also:

[Saving a wordlist](#)

[Inserting words to a wordlist](#)

[Printing questions as a text file](#)

Saving a wordlist

You can save the current wordlist of the Study screen. The saved wordlist can be used as wordlist resource when you create a new wordlist in the Bookstand.

- 1 Click **Save Wordlist** on the **Study** menu, or click **Save** on the toolbar.
- 2 In the File Open dialog box, type a WLF filename and click **OK**.
- 3 Vwiz's Wordlist Editor will pop-up with the saved wordlist.

See also:

[Printing a wordlist on paper](#)

[Inserting a word to a wordlist](#)

Inserting words to a wordlist

You can insert a word to the current wordlist in the **Study** screen on the fly.

- 1 In the **Study** screen, open the Dictionary by clicking **Dictionary** on the toolbar or pressing **Ctrl+D**.
- 2 In the **Dictionary**, type or find the word that you want to insert into the current wordlist. You can register a new word into the Dictionary if necessary.
- 3 Shift-click **[*]** (Word Memo) button.
- 4 You can insert a word before or after the current word in the wordlist.
- 5 You can repeat 2,3,4 as many times as you want.
- 6 The inserted words are also written down onto Vwiz's Memo Pad automatically. It will be useful when you create a new wordlist in the Bookstand.

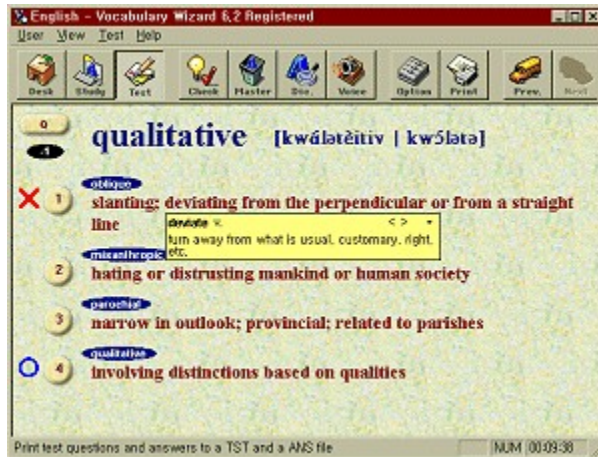
See also:

[Printing a wordlist on paper](#)

[Saving a wordlist](#)

[Using the Dictionary](#)

Test Screen



Vocabulary Wizard gives you various test questions. It automatically generates questions under the Test option settings. There are three types of the test questions. You can preset the attributes of the words to be questioned. You can even print questions as a text file for paper tests. Through this session, you can exercise yourself for real tests.

Basic Procedures:

- In the **Test Options** dialog box:
 - Select type of question and attributes of the question words.
 - Select a style(format) of the multiple-choice examples.
 - Set the other options.
 - Click **OK**.
 - The first question will appear on the screen.
- In **Test1**, you should choose a correct meaning of the given word.
- In **Test2**, you should choose a word of the given meaning.
- In **Test3**, you should type a word of the given meaning.
- After short guess, click a number button or press a numeric key on the keyboard or enter a word and press **ENTER**. If you press **0** in the multiple-choice questions, Vwiz will show you the correct answer immediately.
- To pass a test question without answering it, click **Q** or push **ENTER** key or press **RIGHT (MOUSE)** button.
- Then Vocabulary Wizard shows the result of your answer. If you are correct, **O** sign will be displayed next to the correct answer. If wrong, **X** sign will be also displayed next to your wrong answer.
- To get more information about words, just click the corresponding number buttons. Then the Dictionary will pop up and shows you the detail about the words.
- Of course, the result is to be reflected on the Study Index of the word.
- Youd better not hesitate to assign a Check Mark or a Master Mark whenever you think it is needed.
- If you right-click any word on the screen, Vwiz will search for the word in the Dictionary and show you a closest word and its meaning in a pop-up window.
- If the mouse cursor becomes a 'loud speaker' symbol, left-click to play the corresponding voice pronunciation.

Keyboard and Mouse:

Ctrl+INS	Adds a Check Mark or removes it
Ctrl+DEL	Adds a Master Mark or removes it
Alt+O	Displays the Test Options dialog box
F5	Plays voice pronunciation
ENTER	Goes to next question
RIGHT (MOUSE)	Refers to the pop-up dictionary or goes to the next question

See also:

[Printing questions as a text file](#)

Printing questions as a text file

You can print questions and answers as a text file. The extension of the file is TST which means Test. If you create a TST file, the corresponding ANS text file will be automatically created, which contains the correct answers of the questions.

- 1 On the **Test** menu, click **Print Questions as a text file** or click **Print** on the toolbar.
- 2 In the file dialog box, type the filename of the TST file, and then click **OK**.
- 3 In the **Print Test File** dialog box, add question items by clicking **Add**.
- 4 When you see **Test Options** dialog box, select the options, type the number of questions, and then click **OK**.
- 5 You can repeat 3,4 as many times as you want.
- 6 To remove a existing question item, select it in the list box, and click **Delete**.
- 7 After adding question items, click **Save**, and then click **Close**.
- 8 Tab characters will be inserted in the output files so that you can easily layout the text in your word processing programs.

See also:

[Printing a wordlist on paper](#)

How to Record Voice

Through Vwiz's Voice Recorder, you can record your own voice as voice pronunciations. If a voice pronunciation of a word has been recorded and registered to Vwiz's Voice Dictionary, it is automatically played by Vwiz while you're studying the word.

General Information:

- 1 In Vwiz, there is a special dictionary, '**Voice Dictionary**' which has voice recordings as its contents. It is different from the normal Vwiz's Dictionary. (i.e. vocabulary database.) You can record your own voice and register the recording as a voice pronunciation into the **Voice Dictionary**.
- 2 Before recording your voice, a microphone should be connected to your PC's sound card. Make sure that your microphone works well in Windows' Recorder program that resides in the Windows' directory as '**SndRec32.exe**.'
- 3 To obtain better quality of recording, you should calibrate the input volumes in Windows' Mixer program. The mixer program is also located in the Windows' directory as '**SndVol32.exe**.' When you run this, you can see the output volumes by default. But you need to control the input volume for the microphone, not its output volume. In the **Property** menu, you can switch the volume controls from 'output' to 'input'. Repeat testing until you can get better recording.

How to Open Vwiz Recorder: (3 ways)



- 1 In Vwiz's **Word Editor**, click **Voice** button.
- 2 In Vwiz's **Dictionary**, Shift-Double-Click a word in the list box located at the right hand side of the Dictionary.
- 3 In the **Study** or the **Test** screen, press **Ctrl+W**.

Basic Steps for Recording Voice Pronunciations:

- 1 Open Vwiz's **Voice Recorder**. (See above.) It's title bar shows the current word whose pronunciation will be recorded or updated.
- 2 If a voice pronunciation of the current word has been registered in Vwiz's Voice Dictionary, you can hear it whenever you open the Voice Recorder.
- 3 To start your recording, press **1(Record)** and speak out the word.
- 4 To end your recording, press **1(Stop)** again. Then Vwiz plays the recorded voice so that you may check the result of the recording. By setting the value of 'Record Time Limit', you can change the maximum length of recording.
- 5 If you want to hear the recording again, press **2(Play)**.

- 6 To register the new recording as a voice pronunciation of the current word, press **3**(Register).
- 7 To play the registered voice pronunciation, click **Play** button in the 'Registered Voice' Section.
- 8 To remove the registered voice pronunciation, click **Delete** button.
- 9 While recording your voice, you'd better use 1, 2, and 3 keyboard buttons instead of mouse clicks.
- 10 In the **Study** screen, there appears **Next** button in the Voice Recorder. It is convenient to use this button when you are going to record a voice pronunciation of the next word in the wordlist.

Importing Voice Pronunciations from a WAV file with a VDF:

Assume that:

- We are going to import voice pronunciations of these words: apple, banana, grape, and melon.
- In other wave editor programs (such as CoolEdit and GoldWave), you have recorded the above voice pronunciations in a wave file named as 'Fruits.wav.' The format of the wav file should be **PCM, 8bit, Mono, 11,025 Hz**.
- You may know the start/end offsets (in byte) of those voice pronunciations in Fruits.wav.
- VDF is an acronym for 'Voice Data File.'

- 1 First, you have to create Fruits.vdf which is a simple text file. Open Windows' NotePad or any other text editor programs.
- 2 Type the following: ('/' is a comment tag. Don't type comment strings.)

```

apple // The spelling of the word
0 // The index of 'apple.' (starts from 0)
10 // The start offset of 'apple' in Fruits.wav.
13415 // The end offset of 'apple' in Fruits.wav
// Empty Line
banana // The spelling of the word
1 // The index of 'banana.'
13500 // The start offset of 'banana' in Fruits.wav.
31771 // The end offset of 'banana' in Fruits.wav
// Empty Line
grape // The spelling of the word
2 // The index of 'grape.'
32001 // The start offset of 'grape' in Fruits.wav.
47908 // The end offset of 'grape' in Fruits.wav
// Empty Line
melon // The spelling of the word
3 // The index of 'melon.'
49881 // The start offset of 'melon' in Fruits.wav.
61252 // The end offset of 'melon' in Fruits.wav
// Empty Line

```

- 3 Save the above text as 'Fruits.vdf.' (Its extension should be 'VDF.')
- 4 Run Vwiz, and open Vwiz's Voice Recorder.

- 5 Click **Menu** button, and then click **Import VDF** item.
- 6 Select Fruits.vdf, and click **OK**.
- 7 Check the imported voice pronunciations in Vviz.

See also:

[How to import text data](#)

Miscellaneous

General Topics:

[How to initialize Study Record](#)

[Fonts Setup](#)

[Using the Dictionary](#)

[How to use Memo Pad](#)

[How to import text data](#)

[How to back up data](#)

[How to record voice](#)

Desk & Bookstand:

[How to create wordlists](#)

Study:

[Printing a wordlist on paper](#)

[Saving a wordlist](#)

[Inserting words to a wordlist](#)

Test:

[Printing questions as a text file](#)

How to Initialize Study Record

Study Record means Study Indices, Check Marks, and Master Marks of the words that you have studied. You can reset the Study Indices to 0, remove Check Marks and Master Marks. You can also initialize only the words on the Desk not the whole words in Vwiz's Dictionary.

Basic Steps for Initializing Study Record:

- 1** On the **User** menu, click **Initialize Study Record**.
- 2** Select the target words of initialization in the '**Intialize What?**' section.
- 3** Select the options that you want and click **Change**.
- 4** Repeat step 3 if necessary.
- 5** After initialization, click **OK**.

Fonts Setup

You can change the fonts of the characters to be printed on the screen.

- 1 On the **User** menu, click **Fonts**.
- 2 Select the display item in the list box and then click **Change**.
- 3 Select a font from the **Font** dialog box.
- 4 You can repeat 2,3 if you want.
- 5 To reset all the fonts with default values, click **Reset**.

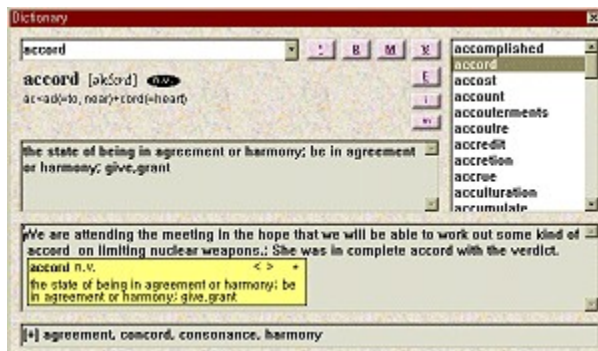
Using the Dictionary

You can refer to Vocabulary Wizards Dictionary at any time. This dictionary plays an important role as a database internally and gives you quick references for unfamiliar words. You can add new words or additional information into it. You can also edit the existing data.

Components of a word:

(Word)	spelling of the word
(Pronunciation)	phonetic symbols
(Part)	part of speech
(Origin)	information of its origin
(Meaning)	1st meaning (mainly in English)
(2nd Meaning)	extra meaning or translation of its 1st meaning in foreign languages
(Example)	1st example (mainly in English)
(2nd Example)	extra example or translation of its 1st example in foreign languages
(Reference)	synonyms [+], antonyms [-]

How to open:

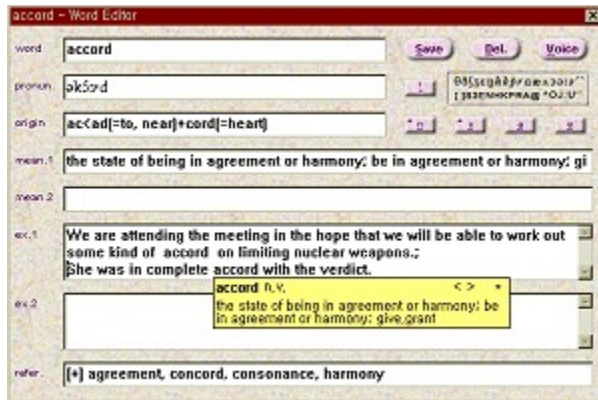


- 1 Click **Dictionary** on the **View** menu or on the toolbar. Or press **Ctrl+D**.
- 2 In the **Study** screen, it pops up with the current word initially.
- 3 In the **Test** screen, it pops up with the answer word. If you want to know details among the words of the multiple-choice examples, click the number buttons, then it shows you the corresponding words.
- 4 You can change the size of the Dictionary by checking or unchecking the **Extended Size** item in the **Menu**. (Press **[M]** button to view the menu.)

Finding a word:

- 1 Type the word in the **Find** edit-box and press **ENTER**.
- 2 If the word already exists in the Dictionary, it will be shown to you. Otherwise, the similar words will be listed on the list box. You can also click a word in the list box to see details.
- 3 If the word has its voice pronunciation, the Dictionary plays it at the same time. You can hear it again with clicking **[V]**(Voice).

Adding(Registering) a new word:



- 1 In the **Find** edit box, type a word that you want to add, and then click **[R]**(Register) button.
- 2 In Vwiz's Word Editor, fill in the appropriate components of the word as much as you can. (See [Components of a word.](#)) You should check at least one of the four 'part of speech' buttons.
- 3 To type phonetic symbols of the word, refer to the [Keyboard mapping.](#)
- 4 After typing, click **Save** and then press **ESC** to close the Word Editor.

Editing an existing word:

- 1 Type and find a word you want to edit.
- 2 Click **[E]**(Edit) or double-click the word in the list box to open the Word Editor.
- 3 Update the existing data or add some components of the word.
- 4 After editing, click **Save** and then press **ESC** to close the Word Editor.

Refreshing the Dictionary:

- 1 To arrange the Dictionary, click **[M]**(Menu) button and select **Refresh Dictionary.**
- 2 You can remove redundancy of data in the Dictionary files. But this process will be very lengthy.
- 3 Youd better refresh the Dictionary once or twice a month.

Keyboard mapping for phonetic symbols:

symbol	▶ θð}zεηήpɾoæΛoæzə˘`
key	▶ []S3ENHPRA@^OJ:U``

- 1 In the above figure, the first row indicates the phonetic symbols and the second row indicates the corresponding keys.
- 2 You can input the first accent(') and the second accent(') of the word. The second accent(') should be located before a vowel while the first accent(') should be located after a vowel.
- 3 After typing and saving, Vocabulary Wizard converts the accent symbols into the adequate formation.

See also:

[How to create wordlists](#)

Inserting words to a wordlist
How to record voice

How to Use Memo Pad

Vocabulary Wizard can have a special temporary wordlist where you can put word entries at any time. Based on the contents of the temporary wordlist, you are able to create a new wordlist. The Wordlist Editor in which you can deal with the temporary wordlist is called as '**Memo Pad.**' The Memo Pad is almost same as the Wordlist Editor in terms of its functions and appearance. Remember that the purpose to use it is to save words instantly and keep them temporarily.

- 1 To open Vwiz's Memo Pad and see its contents, press **Ctrl+M**.
- 2 When it is opened, type word entries in it. You can copy words from the Memo Pad, and paste them to other wordlists. You can even save it as a new wordlist.
- 3 In the **Dictionary**, click **[*]**(Word Memo) button to save the current word into the Memo Pad.
- 4 In the **Mini-Dictionary** (Pop-up Dictionary) click * button to save the current word into the Memo Pad.

See also:

[Using the Dictionary](#)

[How to create wordlists](#)

How to Import Text Data

You can import text files(DDFs) into Vwiz's Dictionary. As you know, Vwiz's Dictionary is the main vocabulary database. In this topic, we are going to show you a batch processing to import word data from text files. By importing a DDF, you can add a number of data into the Dictionary at a time without using Vwiz's Word Editor..

What is DDF?:

- 1 DDF is an acronym for 'Dictionary Data File.' A DDF is a simple text file. You can create a DDF in text editor programs and import it to Vwiz's Dictionary.
- 2 When you write a DDF, it must have two units in it: **Header & Data Unit**. The header unit is enclosed between [DDF HEADER BEGIN] tag and [DDF HEADER END] tag. The data unit part is enclosed between [DDF VOCA BEGIN] tag and [DDF VOCA END] tag.
- 3 Inside the **Header** part, there will be two tags: **[DDF HEADER COUNT]** & **[DDF HEADER FIELD]**. In the next line of [DDF HEADER COUNT] tag, total number of word entries in the DDF has to be written. In the next line of [DDF HEADER FIELD] tag, the list of components in the DDF has to be written. The sequence of the components in the list is very important because, for example, '(Word)(Part)(Meaning)' is significantly different from '(Word)(Meaning)(Part)'. The components are named as these strings: (Word), (Pronunciation), (Part), (Origin), (Meaning), (2nd Meaning), (Example), (2nd Example), and (Reference).
- 4 Inside the **Data Unit** part, according to the sequence in the [DDF HEADER FIELD] section, the corresponding components of words will be listed. (See the next example.)

Let's create a DDF:

Assume that:

- We are going to create a DDF which contains data of 4 words: apple, banana, grape and melon.
- The DDF's name will be 'Fruits.ddf.'

- 1 Open an empty file with a text editor program such as Windows' NotePad.
- 2 Type entries like this: ('//...' strings are comments. You don't have to type them.)

```
[DDF HEADER BEGIN] // Header unit begins.
[DDF HEADER COUNT]
4 // Total number of words in Fruits.ddf.
[DDF HEADER FIELD]
(Word)(Part)(Meaning) // List of word's components in Fruits.ddf.
[DDF HEADER END] // Header unit ends.
// Empty Line
[DDF VOCA BEGIN] // Data unit begins.
apple
n. // 'n.' (noun), 'v.' (verb), 'a.' (adjective), 'e.' (etc)
The fruit of the apple tree, from which cider is made.
// Empty line

banana
n.
```

A species of the genus Musa, and its fruit.

grape

n.

a cluster of the fruit of the vine.

melon

n.

The name of certain plants and their fruit, as the water-melon, the musk-melon.

[DDF VOCA END] // Data unit ends.

- 3 Save the text as 'Fruits.ddf.'

Importing a DDF:

- 1 Open Vwiz's Dictionary.
- 2 Click **[M]**(Menu) button, and select **Import *.DDF**.
- 3 Choose a DDF (such as Fruits.ddf) in the file open dialog box, and click **OK**.

See also:

[How to create wordlists](#)

[How to record voice](#)

How to Back-Up Data

Sometimes you may feel that you should back-up all the data in your Vwiz, because you don't want to lose your data in abnormal cases. There are a lot of data files in Vwiz's directory. **It is strongly recommended to back-up periodically all the files in Vwiz's directory, even subdirectories and files of them.** You'd better compress them into one file. The following information will give you more knowledge for the back-up process.

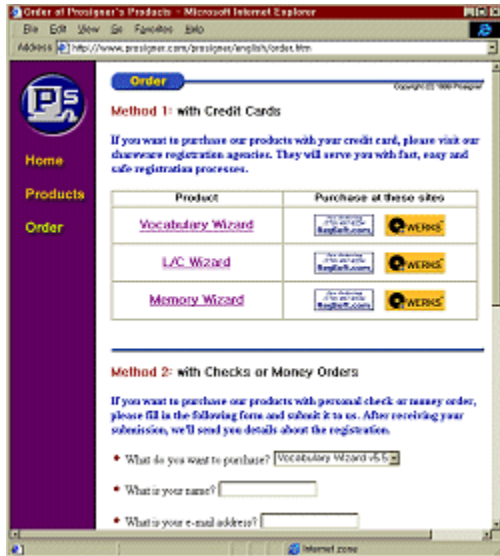
In Vwiz's Directory: (Root)

- **EVWIZ62R.EXE (or EVWIZ62D.EXE):** Vocabulary Wizard's EXE file. 'EVWIZ62R.EXE' is the registered version. 'EVWIZ62D.EXE' is the unregistered(demo) version.
- **EVWIZ62.HLP:** This help document file.
- **VWIZVOCA.PAT:** Voice pronunciation information file.
- **VWIZVOCA.PIX:** Voice pronunciation index file.
- **PRONUN??.WAV:** Voice pronunciation wav files.
- **PRONUN.TTF:** Pronunciation True-Type font file.

In Vwiz's [English] Directory:

- **ENGLISH.FAT:** Vocabulary data information file.
- **ENGLISH.SON:** Vocabulary data file.
- **ENGLISH.DIX:** Vwiz's Dictionary index file.
- **ENGLISH.SMK:** Study record file. (includes Study Indices, Check Marks, and Master Marks.)
- **ENGLISH.USR:** User environment file. (i.e. User configuration file)
- **ENGLISH.MLF:** Memo Pad's wordlist file.
- ***.WLF:** Wordlist files.
- **Subdirectories:** Wordbooks.

Vocabulary Wizard Registration Information



If you visit Prosigner's home page at <http://www.prosigner.com>, you can purchase a registered copy of Vocabulary Wizard with your credit cards. There are several links to our shareware registration agents. You can even pay for the registered copy with your personal check and international money order. Within 2 business days after receiving your order, Prosigner will send a registered copy to you via e-mail attachment. (i.e. attached binary file) If you have any question about ordering, please feel free to send an e-mail to Prosigner at ddam@nownuri.net.

With a Registered Copy:

- 1 There is no limit on the number of the words that can be loaded on the Desk at a time. In an unregistered (demo) version, it is limited to only 7 words.
- 2 As a registered user, you can get the next upgrade versions at discounted prices from Prosigner.

Registration Fee (Price): **US\$ 36.00** (for personal license)

(see [License and Copyright](#) for multiple licenses)

How to Register:

- 1 First! Visit Prosigner's home page at <http://www.prosigner.com>. It will show you several ways to purchase our products.
- 2 You can pay in one of these ways: credit cards, personal checks, money orders, cashier's checks, and international money orders drawn in US dollars.
- 3 As soon as receiving your payment, we'll send you a registered copy via e-mail file attachment. (within 2 business days)

Prosigner:

E-mail: ddam@nownuri.net
Home page: <http://www.prosigner.com>

See also:

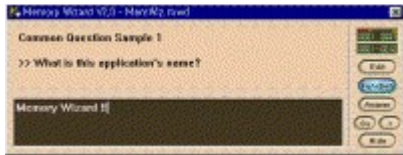
[License and Copyright](#)

[Other programs from Prosigner](#)

Other programs from Prosigner

You can find information on Prosigner's other products at <http://www.prosigner.com>. You can also download the latest versions of our shareware products.

Memory Wizard:



- Memory Wizard is a small-sized Windows95/NT(32Bit) application truly helps you memorize whatever you have to learn by heart.
- MemWiz pops up periodically with user-prepared questions and answers on your monitor.
- For anyone who works on a PC every day.
- For anyone who has a lot of things to memorize steadily.
- Especially for students and those preparing themselves for examinations!
- You don't have to worry about when and how to brush up on your knowledge.
- MemWiz will take care of your review practice for you.
- Enjoy the user-friendly interface of Memory Wizard!

L/C Wizard (Listening Comprehension):



- LCWiz is a Windows95/NT(32Bit) application that helps to develop your listening skills in foreign languages!
- LCWiz records human voice or music from your audio tapes and compact disks into digitally remastered files, and provides you with convenient ways to transcribe audio recording into text.
- For anyone who has to learn how to listen and how to speak foreign languages efficiently and comfortably. Especially for students & teachers of foreign languages.
- You don't have to wrestle with your cassette player any more.
- From now on, you won't need pencils & notebooks to transcribe your recordings.

See also:

[How to register](#)

[License and Copyright](#)

License and Copyright

Vocabulary Wizard was created by Prosigner.

Software License

Please read the following lines carefully before using this software. If you disagree with any of the following, you are not allowed to use this program. You MUST then delete it immediately.

Vocabulary Wizard may be freely distributed subject to the conditions below, but please consider registering if you decide to use this program after evaluating the unregistered shareware version. Vocabulary Wizard may NOT be distributed in any retail package (Shareware collection or otherwise) without written consent of Prosigner. If Vocabulary Wizard is included in any non-retail CD-ROMs or other packages, please let us know so that we can keep track of the distribution. If you would like to include Vocabulary Wizard in a retail package, please contact us for more information. The registered copy granting the full use of all the functions in Vocabulary Wizard may only be used on a single machine at any given time. By receiving a registered copy from us, you are agreeing to this license. A registered copy can only be given out by Prosigner, or an agent acting on behalf of Prosigner officially authorized by Prosigner.

Registered version (personal license)

The registered version may be installed on as many computers as desired, as long as it is ONLY running on one at any one time (i.e. one installation at home and one at the office used by the same person). The usage by multiple people at the same time (on multiple computers) requires additional licenses.

Multiple licenses (additional licenses)

Multiple licenses allow an institution, company or school to install the program on multiple computers or on a server. It must be guaranteed that the program does not run on more machines at the same time than the number of licenses purchased. Additional licenses cost US\$ 27.00 for the 2nd to 20th license, etc. For larger amounts than 20 please contact Prosigner. Each additional license also allows a single user to use the program at home.

Warranty Disclaimer:

Prosigner makes no warranty of any kind, expressed or implied, including any warranties of fitness for a particular purpose. In no event will the company be liable for any incidental or consequential damages arising from the use of, or inability to use, this program.

Vocabulary Wizard is a trademark of Prosigner. Windows, Windows 95, Windows 98, Windows NT, and Windows 2000 are trademarks or registered trademarks of Microsoft Corporation. All other products mentioned are trademarks or registered trademarks of their respective manufacturers.

See also:

[How to register](#)

[Other programs from Prosigner](#)

