



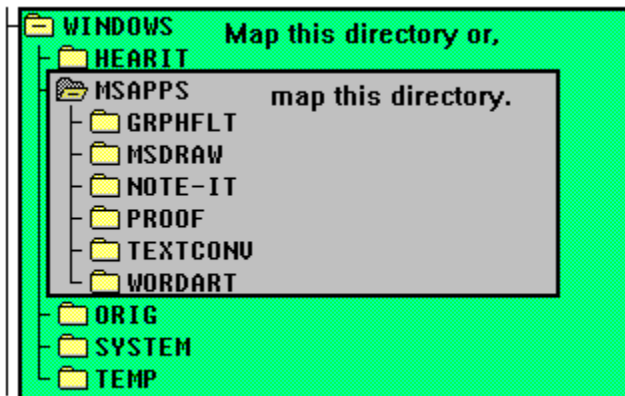
SpaceMap

SpaceMap's purpose:

SpaceMap is a utility designed to help you visually graph your disk drive space utilization. By visually showing you the space consumed by each directory or sub-directory, it helps you better manage your disk drive free space. SpaceMap lets you quickly determine the directories that are the largest consumers of space, so that you can focus your disk clean up activities to those directories. SpaceMap gives you the total for the directory not just the current branch of the directory tree as you get with File Manager.

Directory Graphing

SpaceMap will total any directory tree and create a [Graph Panel](#). SpaceMap looks at all the files under the directory you select using the [Specification Panel](#). This includes all the sub-directories under the directory selected.



You can select the root directory, any directory or sub-directory, and SpaceMap will graph the total space for all files under that directory hierarchy.

In addition, you can select all hidden files to be included in the graph, and to have the graph bar indicate how much of the space consists of files that have the archive bit on. A file with the archive bit on normally indicates that the file has not been backed up since it was updated, since most backup utilities set the archive bit off when a file is backed up.

[SpaceMap Specification Panel](#)

[Graph Panel](#)

[SpaceMap Print Request Panel](#)

[SpaceMap Licensing Information](#)

[Un-Install Instructions](#)



SpaceMap Specification Panel

SpaceMap Options

Select Directory to Map: C:\

Minimum Bytes to Show on Graph: 1,000,000

File List:

- c:\
- anykey
- apps
- cad
- cbw
- cbwlite
- cmake

Drive: c: [MS-DOS_5]

Graph Hidden and System Files

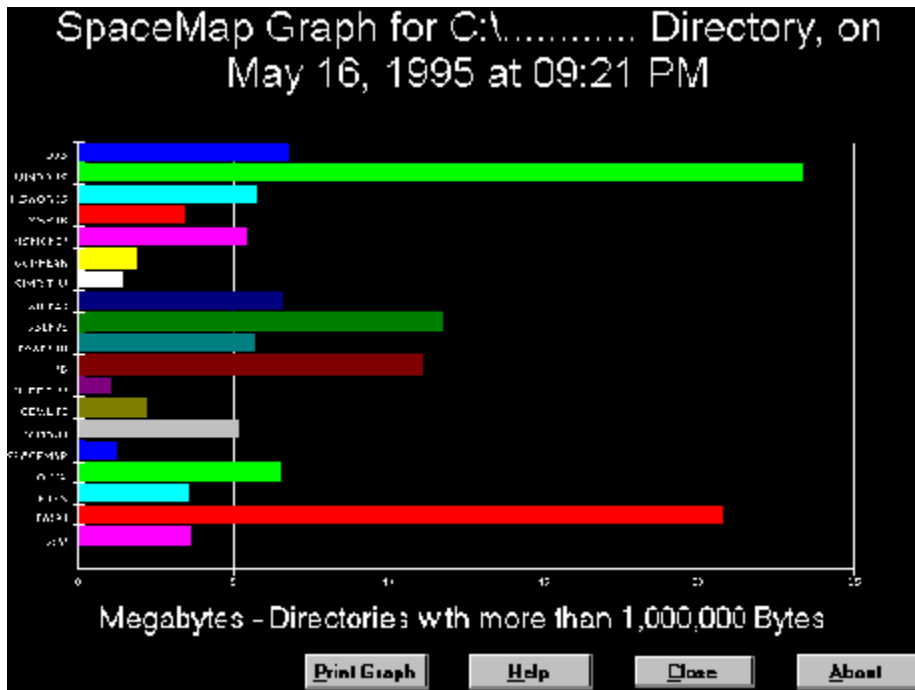
Highlight Amount with Archive On

Buttons: CANCEL, RUN GRAPH, HELP, ABOUT

This panel allows you to specify which directory or sub-directory to graph. Click on each field for a description.



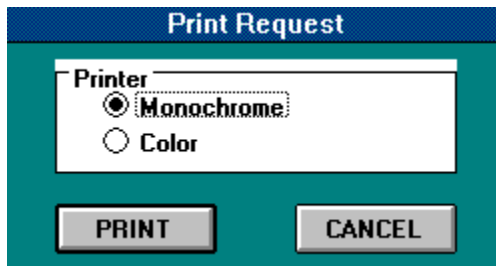
SpaceMap Graph Panel



This panel displays the graph bars for the directories that you have selected. Click on each field for a description of each.



SpaceMap Print Request Panel



This panel allows you to request the graph to be printed. Click on each field for a description of each.



SpaceMap Licensing Information:

SpaceMap is a freeware program, all rights reserved. Which means you have free use of this program, and may distribute it for free, but not for re-sale. This product is provided "AS IS" without warranty of any kind. The entire risk as to the results and performance of the program is assumed by you.

I hope SpaceMap helps you manage your disk space. Comments and suggestions are encouraged. I will try to answer questions sent to my e-mail address.

Jerry Ramaekers
12660 "O" Street
Omaha, NE 68137-1907
U.S.A.
CompuServe- 71514,112



Un-Install Instructions for SpaceMap

Sorry that SpaceMap doesn't meet your needs. Any feedback that you could give to help make SpaceMap a better product would be appreciated. My e-mail address is CompuServe 71514,112.

Below is information to clean all SpaceMap related files off of your hard drive. To remove SpaceMap from your computer, you should delete the following: (You can print this list for use during the delete process, since this file you are reading will be deleted.)

Delete SPACEMAP directory and all files in it (or the name you chose if other than SPACEMAP).

Delete SpaceMap Setup Icon and SpaceMap Help Icon from the SpaceMap Group and **delete** the SpaceMap Group.

Delete SPACEMS1.EXE in your Windows directory.

Special Note:

SpaceMap uses VBRUN300.DLL, GRAPH.VBX, GSW.EXE, and GSWDLL.DLL, which are on your Windows System directory. These are a Visual Basic Version 3 Run Time DLL, Graph object, Graph Program, and Graph DLL respectively. **DO NOT** delete these unless you are sure you are not running any other Visual Basic programs. If you are not sure, try renaming them for awhile to find out if you need them before deleting them.

Displays the directory name that you selected to graph or map space, and the date and time that you ran the SpaceMap program. If you have a directory path (i.g. C:\DOS\) that is longer than 23 characters, the date and time will be truncated from the right, one character for each character the path is over 23.

SpaceMap will display all directories or sub-directories that have this number of bytes or more of file space consumed.

Lists the names of the directories that have equal to or more than the minimum number of bytes specified. Each line will have a graph bar representing the amount of space consumed by all files in the directory listed and all files BELOW that directory or sub-directory in the hierarchy. If you checked the "**Highlight Amount with Archive On**", the bar of each directory will show the amount of space in each directory that consists of files with the Archive Bit set on. As

example: 

Close Button:

Click this button to end the SpaceMap program.

Minimum Bytes Entry Box:

Enter the number bytes that you want to be the selection criteria for graphing directories.

SpaceMap will graph all directories or sub-directories that have equal or greater than this amount of space consumed.

Cancel Button:

Ends the SpaceMap program.

Run Graph Button:

Accepts the directory selected and starts the graphing process.

Displays the directory or sub-directory currently selected for graphing.

Use these selection list boxes to select your directory or sub-directory.

Hidden and System Files Check Box:

Check here to include hidden and system files in the graph.

Print Graph Button:

Click here to display print request panel.

Help Button:

Displays the help file you are viewing.

About Button:

Displays licensing information for SpaceMap.

Option Buttons:

Select either monochrome or color printer.

Print Button:

Click to print graph.

Cancel Button:

Cancels the print selection and returns to the graph display panel.

Highlight Check Box:

Check to highlight the graph bar to indicate the amount of space in each directory that consists of

files with the Archive Bit set on. As example:

