



## **CONTENTS**

About Resource

Installation

System

Memory

User

GDI

Configuration

Running Low

Ordering Information

License

Coming Soon





## About Resource

Copyright (C) 1995 University Software, Inc. All Rights Reserved.

Resource© was developed in order to solve a problem. We felt that Windows Users should know how their system is holding and not rely on a crash to alert them to low resources. Hence Resource©, a graphical tool to give the user vital information. Resource© will tell the user GDI USER and SYSTEM free resources in percentage form. Resource© will also tell you the time and your amount of free memory. Resource© can be configured in three sizes to fit most screens. You can also set it to alarm you with sound to extremely low resources.





## **Installation**

If you received this version of Resource© on a floppy disk please follow the instructions on the disk label to install Resource©. If you received this version of Resource© in a self-extracting ZIP file (for example, Gauge.exe), you can install it as follows: activate the Program Manager, move Gauge.exe to an empty directory and double click Gauge.exe. If you received this version of Resource© in a ZIP file, extract the files to an empty directory. Select File/new from program manager. Select Program Item. Choose Browse and select Resource.exe







## **Memory**

The free memory is displayed in KB.







## User

The USER.EXE heap contains information about windows being used by active applications. The data structure for each window, including any minimized windows, is stored in this heap.

Examples of windows include application windows, dialog boxes, and controls (such as buttons and check boxes). Closing Windows applications, frees most USER.EXE objects. However, GDI.EXE objects such as pens and brushes are not always freed, even when heavily graphics-oriented applications are closed. Some portion of the GDI.EXE heap may be lost until you restart Windows.





## **GDI**

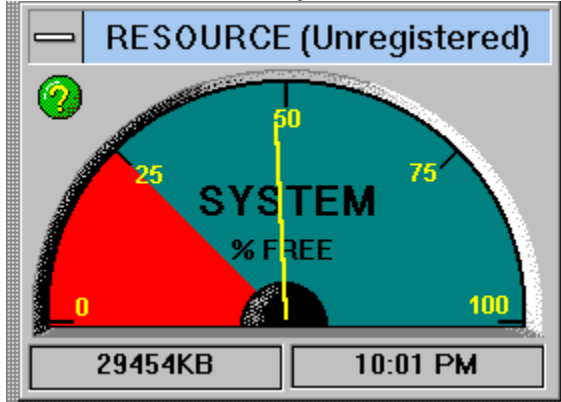
The information given in percentage form will inform you as to how stressed is your machine at a given time. The GDI.EXE heap contains graphical objects, such as cursors, fonts, and icons. When exhausted you should try to close any windows and icons that are not in use. For example; Closing any unused program groups in program manager.



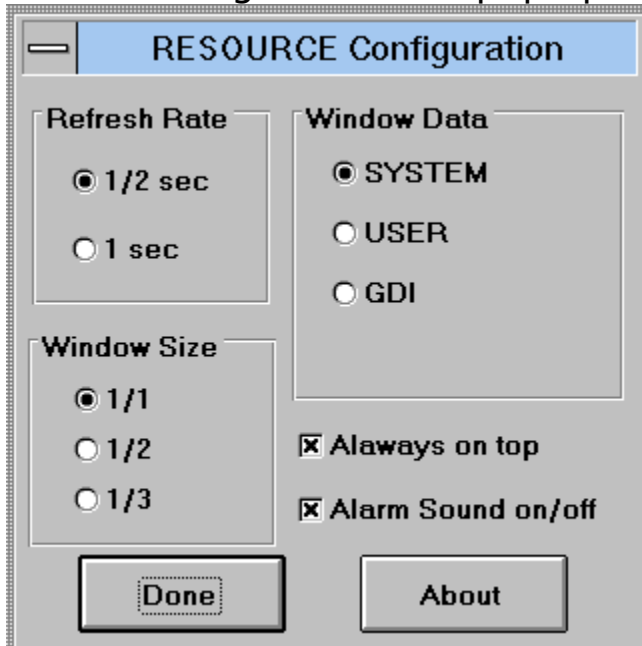


## Configuration

To configure Resource simply click with the mouse on the green circle with the question mark.



The following screen will pop up.



Press on any part of the picture for a brief description.











## Ordering Information

For CompuServe on line registration click here [CompuServe Registration](#)

Please Print This Form

Resource© 1.0 Registration Form/Invoice. To order by check send this order form and a check to University Software, Inc. 7004 Blvd. East, 37B Guttenberg, NJ 07093. Payments must be in US dollars drawn on a US bank, or you can send international postal money orders in US dollars. To order by credit card, (MasterCard, Visa, American Express, or Discover) call UniSoft at 1-800-942-8393 or 201-662-7514 or send your order by FAX to 201-662-1486. A site license for Resource© entitles an organization to receive one copy of the distribution package and duplicate the distribution disk for the specified number of copies.

Resource© Single Copy \_\_\_\_\_ copies at \$19 each = \_\_\_\_\_

Resource© Site License

2 to 9 computers: \_\_\_\_\_ computers at \$15 each = \_\_\_\_\_

10 to 24 computers: \_\_\_\_\_ computers at \$12 each = \_\_\_\_\_

25 to 49 computers: \_\_\_\_\_ computers at \$ 10 each = \_\_\_\_\_

50 to 99 computers: \_\_\_\_\_ computers at \$ 9 each = \_\_\_\_\_

100 to 199 computers: \_\_\_\_\_ computers at \$8 each = \_\_\_\_\_

New Jersey residents add 6% sales tax + \_\_\_\_\_

Total payment \_\_\_\_\_

Prices guaranteed through June 30, 1995

Name: \_\_\_\_\_ Date: \_\_\_\_\_

Company: \_\_\_\_\_

Address: \_\_\_\_\_

City, State, Zip: \_\_\_\_\_

Country: \_\_\_\_\_

Day Phone: \_\_\_\_\_ Eve: \_\_\_\_\_



You can set the frequency by which Resource© ichecks your systems resources. The choices are 1 second and 1/2 a second.

You may configure Resource© to display either the System, GDI or User status. To get more information on these options see the related help topic.

You may select the size of the resource gauge. You might prefer different sizes depending on your screen size and resolution.

You may select Resource© to stay on top regardless of any other applications you are running.

You can choose Resource© to alarm you when your resources are dropping under 25%. To do so simply select the Alarm box.





## License

Resource© version 1.0 Copyright (C) 1995 University Software Inc. All Rights Reserved For ordering information, see Ordering information topic in the help file.

### License Agreement

You should carefully read the following terms and conditions before using this software. Unless you have a different license agreement signed by University Software Inc. Your use of this software indicates your acceptance of this license agreement and warranty. Shareware version is not free software. You are licensed to use this software for evaluation purposes without charge for a period of 20 days. If you use this software after the 20 day evaluation period a registration fee of \$19 is required. Payments must be in US dollars drawn on a US bank, and should be sent to University Software Inc. Credit card ordering and quantity discounts are available, When payment is received you will be sent a registration code and or a registered copy of the latest version of Resource©. Unregistered use of Resource© after the 20-day evaluation period is in violation of U.S. and international copyright laws. You are licensed to make as many copies of the Shareware version of this software as you wish; give exact copies of the original Shareware version to anyone; and distribute the Shareware version of the software and documentation in its unmodified form via electronic means. There is no charge for any of the above. You are specifically prohibited from charging, or requesting donations, for any such copies, however made; and from distributing the software and/or documentation with other products (commercial or otherwise) without prior written permission. One registered copy of Resource© may either be used by a single person who uses the software personally on one or more computers, or installed on a single workstation used non-simultaneously by multiple people, but not both. You may access the registered version of Resource© through a network, provided that you have obtained individual licenses for the software covering all workstations that will access the software through the network. For instance, if 4 different

workstations will access Resource© on the network, each workstation must have its own Resource© license, regardless of whether they use Resource© at different times or concurrently. This agreement shall be governed by the laws of the State of New Jersey.

Disclaimer of Warranty

THIS SOFTWARE AND THE ACCOMPANYING FILES ARE SOLD "AS IS" AND WITHOUT WARRANTIES AS TO PERFORMANCE OF MERCHANTABILITY OR ANY OTHER WARRANTIES WHETHER EXPRESSED OR IMPLIED. Because of the various hardware and software environments into which Resource© may be put, NO WARRANTY OF FITNESS FOR A PARTICULAR PURPOSE IS OFFERED. ANY LIABILITY OF THE SELLER WILL BE LIMITED EXCLUSIVELY TO PRODUCT REPLACEMENT OR REFUND OF PURCHASE PRICE.



## **Coming Soon**

The development of this program will benefit from your feedback. The users whose suggestions we implement will receive a free customized upgrade. For feed-back please contact University Software, Inc. via electronic mail to 775057,1727 on CompuServe, or [unisoft@ios.com](mailto:unisoft@ios.com) on Internet.



## System

The information given in percentage form will inform you as to how stressed is your machine at a given time. Percentage is derived from two of the three major Windows components, USER.EXE and GDI.EXE. (The third component is KRNL286.EXE or KRNL386.EXE, depending on the mode in which Windows is running.) USER.EXE and GDI.EXE each have a data segment (that is, heap) limited to 64K. The 8086/80286 platform architecture imposes this 64K limit. When the System option is selected Resource checks the percentage of free heap space for both USER.EXE and GDI.EXE. It then reports the smaller of the two percentages. For example, if USER.EXE has 50 percent free heap space, and GDI.EXE has 70 percent free heap space, System reports 50 percent.



## **Running Low**

If your system resources are often low, keeping few applications running is probably the best solution; however, you may also want to:

Minimize seldom-used groups to conserve system resources. Try not to keep groups that have many icons open. If you run an application that uses system resources every time it runs, try to keep it open instead of closing and reopening it many times during the day. Try not to load fonts that aren't needed.



## CompuServe Registration

Resource© is not freeware. You are allowed 20 days to use the program free of charge in order to evaluate it. After which time, you are required to register Resource©. Upon registration, you will be given a registration ID which can be used by clicking on the register option when activating the program. Enter your name in the **exact** same form as in registration ID.

Register directly on-line with CompuServe by typing GO SWREG.  
The registration ID is 5683.

Support for Resource© may be obtained via the following:

CompuServe: 75057,1727  
Internet: unisoft@ios.com  
<http://www.ios.com:80/~unisoft/>

