

- ▶ Link Check
- ▶ Version 1.10 - August 1995
- ▶ Copyright (C) Karri Software Ltd. 1994-1995.



Contents for Link Check Help

To learn how to use Help, please press F1.

Please select one of the following:

[Overview](#)

[System Requirements](#)

[Menu Options](#)

[Toolbar](#)

[Module Window](#)

[Key Window](#)

[DLL Scanner Window](#)

[How to Register/Order](#)

[Registered Version Details](#)

[Copyright/License/Warranty](#)

[Trademarks](#)

NOTE: Always backup any files you are about to delete.



Overview

Link Check enables the user to view the links between an executable file and the modules it requires to run on the system. Furthermore, the program allows the user to view version information on these modules for identification purposes.

Link Check has a built-in scanner to identify modules on the hard disk which are apparently not called by any executable. This enables the user to backup those files and remove them from the disk to free up some valuable disk space.

VERY IMPORTANT: Always backup any files you are about to delete.

The program evolved from two basic needs, namely to identify which modules needed to be backed up with a particular executable as well as identifying the modules that were likely candidates for deletion upon the removal of the executable.

Link Check also comes in handy when a program cannot run because some of the modules it requires are not present on the system. **Link Check** shows what those missing modules are.

This shareware version of **Link Check** supports 16-bit Windows executables only. Please click on [Registered Version details](#) for more information on what you'll receive if you decide to register with **Link Check**.



System Requirements

Link Check requires Windows 3.1 or later or Windows for Workgroups 3.11.

This package consists of the following files:

- 1) WLCHECK.EXE Program itself
- 2) WLCHECK.HLP Help file
- 3) CTL3DV2.DLL Optional, 3D effects in dialogs



Menu Options

Please select one of the following:

File:

Open executable

Exit

Options:

Find unused modules

Expand selected module

Expand all modules

Key

View:

Toolbar

Status Bar

Window:

Cascade

Tile

Arrange icons

Close all

Help:

Contents

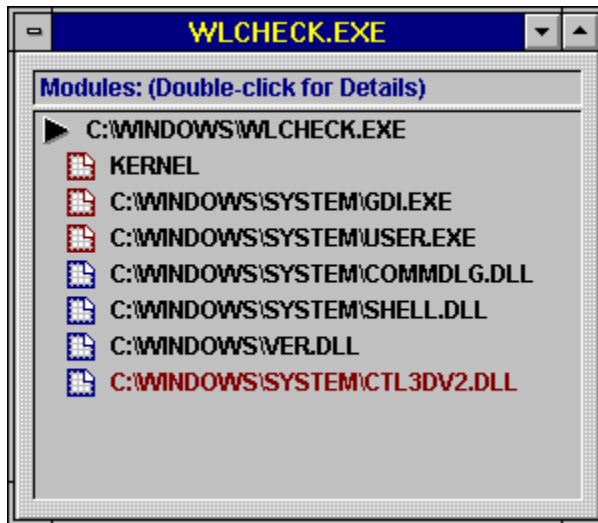
Search for Help on

How to Use Help

How to Register

About Link Check

Module Window



To open a module window, please use the **File** menu option followed by the **Open executable** option or click on the short cut on the toolbar.

This window shows all of the modules that the selected file (indicated by the ► symbol) is linked to. These modules are required to be present in your system for the executable to run.

If a **X** symbol appears next to a module name, then that component cannot be found in the system. **Link Check** verifies the presence of a module by searching the directory of the executable (current directory) followed by the Windows System directory and then finally goes through all the directories listed in your **PATH** statement as set in your **AUTOEXEC.BAT** file to find the component. Note, however, that some programs use their own directory structure to locate their modules. Neither the system nor **Link Check** would pick these up.

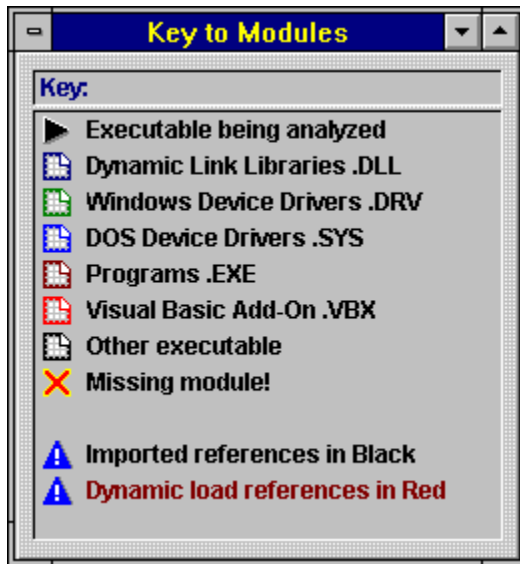
If the text color of the module name appears in **black**, then that module is required to be on the system for that executable to run. If the text color appears in **red**, then a reference to that module exists in the executable. This does not necessarily mean that the module is required by the executable at all times but that it loads it upon request.

If you double-click (or press the Enter key) on any of the modules listed, a brief description of the module is shown including what the component actually is as well as version information.

You can also select Expand selected module or Expand all modules from the **Options** menu to display another module window showing all the modules that one is linked to.

For more information on the symbols used in the Module Window, please click on [Key Window](#).

Key Window

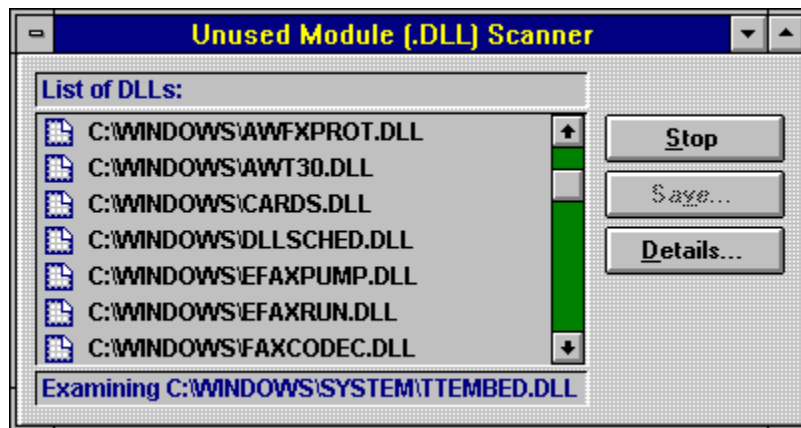


To open the key window, please use the **Options** menu option followed by the **Key** option or click on the short cut on the toolbar.

This window shows the symbols and their meaning as used by the Module window.

Each different type of module is represented by a different color. The last two items in the key window are the explanations of the different text colors. If the text color of the module name appears in **black**, then that module is required to be on the system for that executable to run. If the text color appears in **red**, then a reference to that module exists in the executable. This does not necessarily mean that the module is required by the executable at all times but that it loads it upon request.

DLL Scanner Window



To open the DLL scanner window, please use the **Options** menu option followed by the **Find unused modules** option or click on the short cut on the toolbar.

Use this window to scan your hard disk for a list of **possibly** unused Dynamic Link Libraries (.DLLs).

To start the scan, click on the **Scan** pushbutton (in the above image, as the scanner is in full flow, the Stop pushbutton is in place of the Scan pushbutton). During scanning, you can select a module from the list and click on the **Details** pushbutton to view information about the file.

To stop or cancel the scan, click on the **Stop** pushbutton.

When the scanner has finished scanning the whole of your disk, the **Save** pushbutton becomes enabled and you can save the list to any ASCII or text file.

NOTE: During scanning, **ALL** of your .DLLs are listed. During the latter part of the scan, the scanner removes (from the list, not the disk) the .DLLs that have valid links. The ones remaining have no executable files calling them.

VERY IMPORTANT: Always backup any files that you're about to delete. This list is NOT always 100% accurate.



File: Open executable

Click on this menu option to open an executable file or click on the short cut on the toolbar.

A new Module Window is created listing all of the components required by the executable to run.

 **File: Exit**

Click on this menu option to exit **Link Check** or click on the short cut on the toolbar.

Options: Expand selected module

Click on this menu option to expand the selected module or click on the short cut on the toolbar.

A new Module Window is created listing all of the components required by it to run.



Options: Expand all modules

Click on this menu option to expand all the modules listed in a Module Window. Alternatively, click on the short cut on the toolbar.

Options: Key

Click on this menu option to show the Key Window. Alternatively, click on the short cut on the toolbar.

This window explains the symbols used in the Module Window.

 **Options: Find unused modules**

Click on this menu option to show the [DLL Scanner Window](#) or click on the short cut on the toolbar.

Window: Cascade

Arranges open windows in an overlapping pattern so that the title bar of each window is visible.

View: Toolbar

Shows and hides the toolbar.



Toolbar

The toolbar contains the following short cuts:



Open Executable



Find Unused Modules



Expand Selected Modules



Expand All Modules



Key Window



Exit Program



Help Contents

View: Status Bar

Shows and hides the Status Bar.

Window: Tile

Arranges open windows side by side so that all windows are visible.

Window: Arrange icons

Arranges all icons into rows.

Window: Close all

Closes all open windows.

Help: Contents

This menu item shows the Contents page of the help file.

Help: Search for Help on

This menu item shows the Search dialog box for the help file.

Help: How to Use Help

This menu item shows how to use Help.

Help: About Link Check

Use this dialog box to view the copyright information for this program. You may also review the license agreement as well as the order form for this program.

Order Form

Link Check 1.10 Order Form/Invoice

Print this form by using the **File** menu option followed by **Print Topic** menu option at the top of this page. Send this order form and a cheque payable to Karri Software Limited to:

Karri Software Limited
10 Regency Close,
Woodville Gardens,
Ealing,
London W5 2LP,
England.

Payments must be in English pounds (sterling) for the time being, or you can send international postal money orders in English pounds. **Prices include shipping and handling fees.**

3.5 inch diskettes will be sent unless 5.25 inch diskettes are requested.

Please send me ____ copies of Link Check 1.10

at 11 pounds sterling in the UK each = _____

or at 13 pounds sterling outside the UK each = _____

UK residents please add 17.5% VAT = _____

Total (in English pounds sterling) = _____

Ship to:

Name: _____

Company: _____

Address: _____

Postcode/Zip: _____

Country: _____

Telephone: _____

Electronic Mail: _____

Comments:



Registered Version Details

Link Check is shareware and not available for free. You are allowed a 21-day evaluation period free of charge for this program and then you should either register it with the author or remove it from your disk(s). Should you use it after the 21-day evaluation period, you are violating US and international copyright laws and treaties.

To register this program, please click on [How to Register/Order](#).

As a registered user of **Link Check**, you will receive the following benefits:

1. Technical support over the telephone and Email
2. Free updates for minor improvements
3. Information on other programs/utilities as they become available.
4. Other interesting offers that will appear to registered users only.

The registered version will also support 32-bit file formats, delete and backup facilities. Registered users can also suggest features they'd like to see incorporated into **Link Check**. Any of these features implemented will result in free upgrades for the suggester for the rest of the life of the program.

Technical support is not restricted to **Link Check**; with the discretion of the authors, other areas of technical support will also be supplied free of charge for the time being.

Copyright and License Agreement

Link Check 1.10 (Shareware Version)
Copyright (C) Karri Software Limited 1994-1995

The above is from now on known as SOFTWARE.

You should read this section carefully **before** using this SOFTWARE. By using this SOFTWARE you are agreeing to the terms and conditions of this license agreement.

This SOFTWARE is shareware and not available for free. You are hereby granted a license for a 21-day evaluation period free of charge for this SOFTWARE. After the evaluation period has passed you **must** either register the SOFTWARE with Karri Software Limited or remove it from your disk(s). Should you use the SOFTWARE after the 21-day evaluation period, you are violating US and International copyright laws and treaties.

You are hereby granted a license to make as many copies of the SOFTWARE as you wish, and distribute it to anyone as long as the SOFTWARE is distributed in its entirety and without any modifications what so ever. Bulletin Board Systems are allowed to add a small file describing the BBS with the SOFTWARE.

You are prohibited from charging or requesting donations from this SOFTWARE in any form. You are also prohibited in distributing the SOFTWARE as part of other products (commercial or otherwise) without prior written permission from Karri Software Limited. Only Disk Vendors approved by the Association of Shareware Professionals are permitted to redistribute the SOFTWARE, subject to the conditions in this license agreement, without prior written permission.

You may not rent, lease, sell, modify, decompile, disassemble, otherwise reverse engineer or transfer the licensed SOFTWARE except as provided in this agreement. Any such unauthorised use shall terminate this license immediately.

All rights not expressly granted here are reserved to Karri Software Limited.

Disclaimer of Warranty

THIS SOFTWARE AND THE ACCOMPANYING FILES ARE SOLD "AS IS" WITHOUT WARRANTY OF ANY KIND, EITHER EXPRESS OR IMPLIED, INCLUDING, BUT NOT LIMITED TO, THE IMPLIED WARRANTIES OF MERCHANTABILITY OR FITNESS FOR A PARTICULAR PURPOSE.

THE USER MUST ASSUME THE FULL RISK OF USING THIS SOFTWARE.

ANY LIABILITY OF THE SELLER WILL BE LIMITED EXCLUSIVELY TO PRODUCT REPLACEMENT OR REFUND OF THE PURCHASE PRICE.

Trademarks

Windows, Windows 3.1 and Windows for Workgroups 3.11 are registered trademarks of Microsoft Corporation.
OS/2 is a registered trademark of International Business Machines Corporation.

