



Table of Contents

Introduction

[What Is AnyView Professional?](#)

Interfaces

[AnyView Professional's "Stay-With-Me" Toolbar](#)

[AnyView Professional's Control Panel](#)

[The Desktop File Button](#)

[The "Desktop" Folder Tab](#)

[What's a Color Depth? And What's a Resolution?](#)

[Switching Between Color Depths and Resolutions](#)

[Hardware Zoom](#)

[The "Virtual Desktop" Folder Tab](#)

[Bird's Eye View](#)

[The Options File Button](#)

[The "Interface" Folder Tab](#)

[Using Hot Keys](#)

[Configuring the Toolbar](#)

[Enabling Extended Features](#)

[The "Arrange Windows" Folder Tab](#)

[TrueSwitch Auto Match](#)

[The "Associate" Folder Tab](#)

[TrueSwitch Auto Return](#)

[The Calibration File Button](#)

[The "Color WYZARD" Folder Tab](#)

[The "DPI WYZARD" Folder Tab](#)

[Large and Small Font Emulation](#)

[The Display File Button](#)

[The "Power" Folder Tab](#)

[The "Display" Folder Tab](#)

[The System File Button](#)

[The "OptiMemm" Folder Tab](#)

[The "Catalyst" Folder Tab](#)

What Is AnyView Professional?

Whether you're a software developer, a graphic artist or a computer "novice," you're about to watch your computer perform in ways never before thought possible.

Manage Your Windows Memory with OptiMemm

How many times have you opened just a few applications and watched your system come to its knees? Did your icons turn black or receive constant "out of memory" errors? Now you'll watch AnyView Professional take care of your system memory with OptiMemm, the easiest way to conquer the "out-of-resources" monster.

Speed Up Your Graphics with Catalyst

The minute you install AnyView Professional is the same minute you see your system's graphics display run up to 25% faster! You might think this involves some fancy new hardware lucky for you, AnyView Professional provides Catalyst, the software solution. Using advanced acceleration technology, Catalyst speeds up the Windows repainting process so you can work instead of wait.

TrueSwitch Color Depth and Resolution Switching "On-The-Fly!"

Someday when you look back on the golden age of computers, you'll wonder how you tolerated having to restart Windows every time you wanted to see your display in a different light. With AnyView Professional, switching between color depths and resolutions is as easy as the click of a button your display changes instantly. Don't worry about having to reopen and replace your applications AnyView Professional means coming back to a desktop where your applications and files, even your cursor, will be just as you left them.

The WYZARDS Keep You in Control

What you see is truly what you get with both the Color WYZARD and DPI WYZARD. As you know, the blue in Windows isn't always the same blue you see after your document prints out. And when's the last time an inch on your display in Microsoft Word was less than an inch and a half in real life? The Color WYZARD and the DPI WYZARD help you take control of the color and measurement calibration process. Set your display to be what you want it to be, not what someone else *thinks* you want it to be.

Green Screen: Display Power Management Software!

During the past decade, we've heard a lot about recycling, replanting and saving energy. With AnyView Professional, protecting the environment really begins at home or in the office, as the case may be. With Green Screen and your DPMS compliant monitor, you'll save energy and increase the life of your display hardware.

Making Room with the Virtual Desktop

The AnyView Professional Virtual Desktop allows you to expand your desktop beyond the size of your screen. Scrolling in large spreadsheets or desktop publishing documents no longer means stopping to click on Windows' scrolling arrows. With AnyView Professional's Virtual Desktop, you move your mouse pointer past the edge of the display and the screen automatically pans or scrolls to make more of the desktop visible.

The Virtual Desktop feature is hardware dependent and may not be available for use with all video controllers.

Getting Closer with the Hardware Zoom

The Hardware Zoom feature allows you to magnify any portion of the Windows desktop and to pan and scroll smoothly in the magnified view. Fix those pesky graphics problems or align your text perfectly you don't need to rely on intuition anymore.

The Hardware Zoom feature is hardware dependent and may not be available for use with all video controllers.



AnyView Professional's "Stay-With-Me" Toolbar

Click on any of the Toolbar's buttons to find out what it does.



The Toolbar initially appears as a horizontal row of buttons in the lower corner of your screen. The first button on the Toolbar, labeled AnyView Professional, brings up the AnyView Professional Control Panel (described below) if it is not already displayed. The Control Panel offers an alternative interface for the basic AnyView Professional features, plus the ability to customize many of AnyView Professional's features. If the Control Panel is already displayed, the AnyView Professional button will close it.

All of the other buttons on the Toolbar access AnyView Professional's features as described in the next few sections. You can add, remove or change the order of the buttons on the Toolbar quickly and easily. Please refer to the "Interface" Folder Tab section later in this chapter for more information.

If you've installed AnyView Professional using the default settings, the program provides you with an easy way to call the Toolbar to your mouse simply double click the right mouse button and the Toolbar will appear at your mouse pointer.



See also:

[Configuring the Toolbar](#)

AnyView Professional's Control Panel

The AnyView Professional Control Panel provides access to advanced options that control the way many of AnyView Professional's features behave. In addition, it is an alternate user interface to the Toolbar. The Control Panel appears when you initially install AnyView Professional, but you can display it at other times by clicking on the AnyView Professional button on the Toolbar.

When you call up the AnyView Professional Control Panel, the left side contains five buttons labeled Desktop, Options, Calibration, Display and System. We call these "file" buttons because different AnyView Professional file folders are displayed when they are chosen.

As we begin to explore the features of AnyView Professional, remember that most of them can be accessed in two ways through the "Stay-With-Me" Toolbar or through the Control Panel.



The Desktop File Button

Clicking on the Desktop file button changes the display so that two 3-D file folders appear with tabs labeled "Desktop" and "Virtual Desktop." To switch between the two file folders, simply click on the appropriate tab at the top of your Control Panel.

See also:

[The "Desktop" Folder Tab](#)

[The "Virtual Desktop" Folder Tab](#)

What's a Color Depth? And What's a Resolution?

"Color depth" refers to the number of different colors that can be displayed simultaneously on your screen. AnyView Professional currently supports five different color depth options:

- * **16 colors (4 bits-per-pixel)**
- * **256 colors (8 bits-per-pixel)**
- * **32K colors (15 bits-per-pixel)**
- * **64K colors (16 bits-per-pixel)**
- * **16M colors (24 bits-per-pixel)**

"Resolution" refers to how many pixels are displayed on your monitor. For instance, when in 640 by 480 resolution, 640 pixels are displayed horizontally and 480 pixels are displayed vertically. As you increase the resolution, your display fits more pixels in to the same amount of space that's why objects in a 1024 by 768 resolution look smaller than in a 640 by 480 resolution. The following resolutions are supported by AnyView Professional:

- * **640 by 480**
- * **800 by 600**
- * **1024 by 768**
- * **1280 by 1024**
- * **1600 by 1200**

Note: *The resolutions and color depths that you can switch between are dependent on the abilities of your video controller and monitor. AnyView Professional cannot extend your hardware's abilities.*



See also:

[Switching Between Color Depths and Resolutions](#)

Switching Between Color Depths and Resolutions

AnyView Professional allows you to change the color depth and resolution of your display "On-The-Fly" in one of three ways:

- * ***by clicking a button on the AnyView Professional Toolbar***
- * ***by selecting the appropriate radio button on the AnyView Professional Control Panel***
- * ***by associating an application with a certain color depth and/or resolution as discussed in the "Associations" Folder Tab section***

Using any of these methods produces exactly the same effect: the display switches instantly to the selected color depth or resolution. Depending on your hardware, this change might take a couple of seconds or switch to an alpha-numeric mode before completing.

You can disable either resolution switching or color depth switching by unchecking the appropriate box on this folder tab. You may choose to turn these features off to maximize the capabilities of other features such as Catalyst. If you have disabled these features, AnyView Professional provides you with one-step resolution and color depth switching simply click on the resolution or color depth you want and AnyView will restart Windows in the appropriate resolution or color depth.

Screen resolution and color depth can be selected from two groups of radio buttons on the Control Panel those resolutions and color depths that are not available on your system will be "grayed out."

Hint: There are times where you might not be able to switch to some resolutions in some color depths due to the video memory restrictions of your video controller. In these cases, switch to a lower color depth if you want to work in a higher resolution or switch to a lower resolution if you want to work in a higher color depth. AnyView Professional can automatically ensure that you are in a correct resolution for a color depth if you activate TrueSwitch Auto Match under the "Arrange" file tab.



See also:

[What's a Color Depth?](#) [What's a Resolution?](#)

Register Your Software

AnyView Professional provides an easy way to register your new software simply click the Register button on the "Desktop" Folder Tab. After filling in the appropriate information, print the registration form and mail it to the address provided on it.



Hardware Zoom

The Hardware Zoom utility allows you to magnify a selected portion of the screen and then pan or scroll around the magnified screen. Selecting Hardware Zoom causes the mouse pointer to change into a small magnifying glass. Move the magnifying glass to any point on the screen, then click the left mouse button to magnify the area centered under the pointer. Pull the mouse to the edge of the screen in order to scroll or pan to other areas of the desktop. You can click on the Hardware Zoom button again to shut it off or you can use the "Restore Last Mode" hot key.



See also:

[The Virtual Desktop Folder Tab](#)
[Enabling Extended Features](#)

The "Virtual Desktop" Folder Tab

Note: *This tab is not visible if the Virtual Desktop feature is not available to your video controller.*

The Virtual Desktop utility creates a Windows desktop that is larger than your monitor's display. This is helpful when you have several applications open and want quick access to them all.

You can move quickly and smoothly around this expanded desktop simply by moving your mouse pointer just past the edge of the screen. The display scrolls or pans to reveal the rest of the expanded desktop. AnyView Professional uses the video memory on your video controller to store the complete image of the Virtual Desktop and uses the graphics controller chip to provide smooth, quick scrolling and panning. Activate the Virtual Desktop by pressing the Virtual Desktop button on the Toolbar or the Control Panel.

You can change the size of the Virtual Desktop by clicking on the "Virtual Desktop" tab. On the top left of the file folder is an option called "Virtual Desktop Size." Choose one of the preset options like resolutions, the sizes are measured in pixels.

The two options called "Maximize Windows" and "Minimize Windows" refer to what should happen when you choose to maximize or minimize applications while using the Virtual Desktop. If you choose "To Screen," AnyView Professional will maximize or minimize your applications to the size of the monitor even though the Virtual Desktop might be larger. If you choose "To Desktop," AnyView Professional will maximize or minimize your applications to the size of the Virtual Desktop rather than the display this can mean that some objects will appear off screen after sizing them. If you should ever "lose" an application on the Virtual Desktop, use the Bird's Eye View to locate it quickly.



See also:

[Hardware Zoom](#)

[Enabling Extended Features](#)

[Bird's Eye View](#)

Bird's Eye View

Bird's Eye View exists primarily as a "navigational aid" for the Virtual Desktop, although it is available whether or not the Virtual Desktop is active. Activating the Bird's Eye View opens a window showing a shrunken view of your full desktop. Moving the mouse pointer over the Bird's Eye View window and clicking on any point moves you instantly to that point on the desktop.



See also:

[The Virtual Desktop Folder Tab](#)

The Options File Button

After you have clicked the Options file button, you'll see three tabbed file folders which allow you to personalize your AnyView Professional setup: Interface, Arrange and Associate.

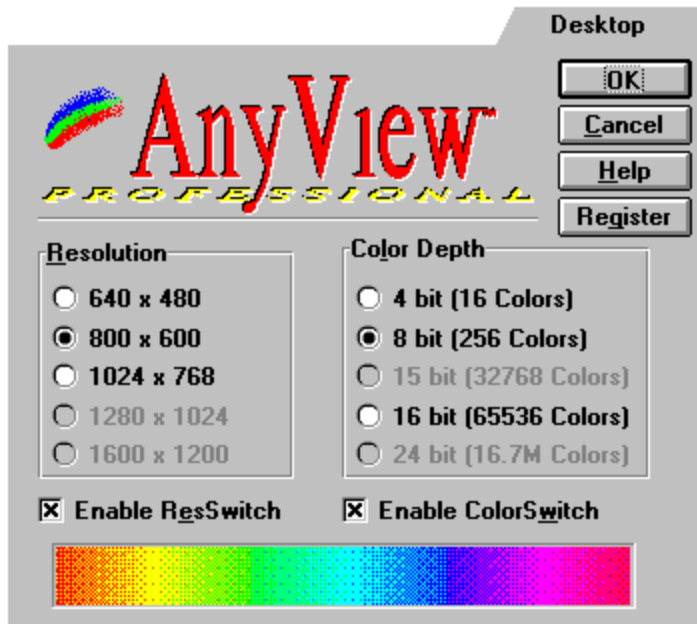
[Interface Folder Tab](#)

[Arrange Folder Tab](#)

[Associate Folder Tab](#)



The Desktop Folder Tab



The Desktop Folder Tab gives you access to TrueSwitch resolution and color depth switching, as well as the Virtual Desktop and Hardware Zoom extended features.



See also:

[Switching Between Color Depths and Resolutions](#)

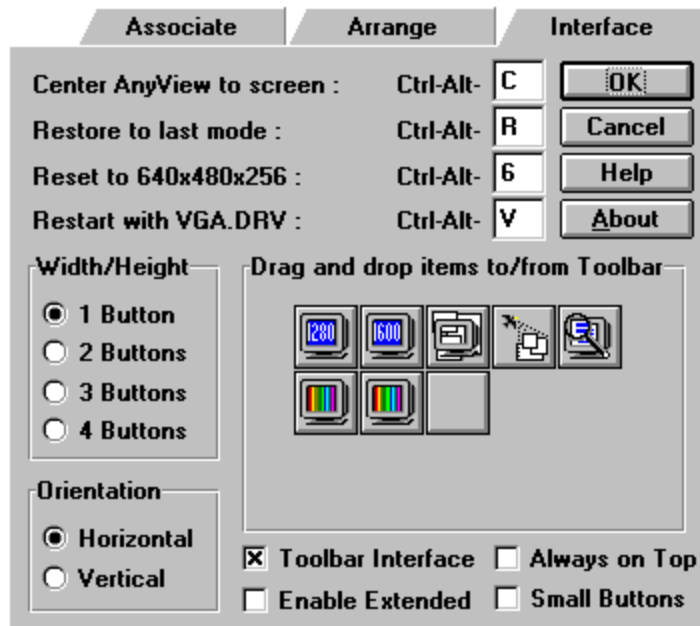
[Enabling Extended Features](#)

[Virtual Desktop](#)

[Hardware Zoom](#)

[Bird's Eye View](#)

The "Interface" Folder Tab



Use the Interface file folder to makes changes to the Toolbar, set hot keys, or choose to have the Control Panel be the default interface.



See also:

[Using Hot Keys](#)

[Configuring the Toolbar](#)

[Enable Extended Features](#)

Using Hot Keys

AnyView Professional has provided you with four hot keys to get you out of trouble quickly should you select a configuration that doesn't work properly or if you "get lost" on the Virtual Desktop. Their default settings are listed in the upper left of the "Interface" file folder:

- * [CTRL]+[ALT]+[R] Restore to Last Mode. Choosing this hot key causes AnyView Professional to return you to your last screen mode. This option is useful when exiting the Hardware Zoom or when you have chosen an invalid screen mode that renders the screen unviewable.
- * [CTRL]+[ALT]+[C] Center AnyView to Screen . This hot key brings the AnyView Professional Toolbar or Control Panel to the center of the screen
- * [CTRL]+[ALT]+[V] Restart with VGA.DRV. This key sequence is used to restore Microsoft's VGA.DRV. We recommend that you try [CTRL]+[ALT]+[R] before resorting to this key sequence. Try using [CTRL]+[ALT]+[V] if AnyView Professional does not install correctly and you are presented with a blank screen.
- * [CTRL]+[ALT]+[6] Reset Resolution to 640x480. This hot key restores the display to 640 by 480 in 256 colors.

You may change these hot keys to any [CTRL]+[ALT] combination that you find convenient. This is helpful if you find that one or more of your hot key combinations conflict with those of another application.



Configuring the Toolbar

Configuring AnyView Professional's Toolbar is easy. To add features to the Toolbar, you simply pick up a button from the "Drag and Drop Items to/from Toolbar" section of the file folder and drop it on the Toolbar. Conversely, pick up a button on the Toolbar and drop it back on the "Interface" tab panel to delete it from the Toolbar. To arrange the order of the icons, just pick them up on the Toolbar and move them where you'd like. While the "Interface" tab is showing, the Toolbar won't react to its normal commands. This also means that you can't rearrange the Toolbar buttons unless the "Interface" file folder is active. Whether the Toolbar should be vertical or horizontal is controlled by the section of the file folder called "Orientation." "Width/Height" indicates how many buttons across or down you would like the Toolbar to show.

"Toolbar Interface" allows you to choose whether you would like the Toolbar to be AnyView's default interface. If you uncheck this option, the Control Panel will be the interface you'll use while working. "Always on Top" indicates whether or not you want the AnyView Professional interface to be displayed no matter what you are working on. This is convenient when the Toolbar is active so that you can choose an AnyView Professional command with a simple click of a button. On the other hand, if you prefer to use the Control Panel as your main interface, you may choose to turn off "Always Topmost" due to the Control Panel's size. "Small Buttons" makes the Toolbar buttons about half their default size. To switch back to large buttons, just uncheck the "Small Buttons" option.



See also:

[AnyView Professional's "Stay-With-Me" Toolbar](#)

Enabling Extended Features

The Virtual Desktop and the Hardware Zoom are called *extended features* because they are a bonus available for some video controllers. The following chipsets have some support for extended features:

- * ATI Wonder, Mach 8, Mach 32
- * Cirrus Logic 5422, 5426, 5434
- * ET-4000, ET-4000 W32i, ET-4000 W32p
- * Oak 067, 077, 087
- * S3 801/805, 911, 924, 928
- * Trident 8800, 8900
- * Video 7 HT 209, HT 216
- * Western Digital WD90C30, WD90C31, WD90C33

After successfully completing installation, check the "Enable Extended Features" checkbox in order to try the Virtual Desktop and Hardware Zoom features, details of which are described earlier in this section.

Note: *In most cases, the Virtual Desktop and Hardware Zoom feature will function without any problems with the above chipsets. There are times, due to system limitations, when the Virtual Desktop and Hardware Zoom features will not be available even if the video controller uses one of the above chipsets.*

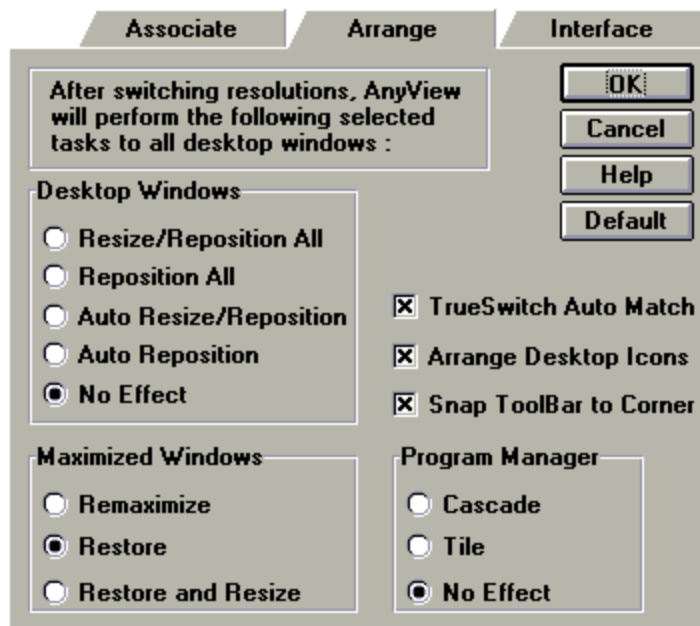


See also:

[Hardware Zoom](#)

[Virtual Desktop](#)

The "Arrange Windows" Folder Tab



AnyView Professional can automate your desktop so that you don't have to resize your applications every time you switch to a higher or lower resolution.

The first option, "Desktop Windows," determines the way windows and other screen elements are sized and positioned when the screen resolution changes. Choose "No Effect" if you don't want your windows to change size or position after switching resolutions.

Beside the "Desktop Windows" options are two check boxes: "Arrange Desktop Icons" and "Snap Toolbar to Corner." You can avoid accidentally forcing minimized application icons off screen when you switch to lower resolutions by clicking the "Arrange Desktop Icons" checkbox it makes sure that the icons remain on your screen. "Snap Toolbar to Corner" keeps the AnyView Professional Toolbar a constant distance in pixels from the nearest corner of the screen. Keeping both of these checked ensures that you will always be able to see your open application icons and the AnyView Professional Toolbar.

The next group of radio buttons, with the heading "Maximized Windows," determines how maximized windows should behave after resolution changes. "Remaximize" keeps maximized windows at full screen size regardless of the resolution. "Restore" keeps your windows at a non-maximized state. "Restore and Resize" makes the window the same size in pixels at the new resolutions that it was at the previous resolution. The last option has an effect only when changing from a lower to a higher resolution.

To the right of the "Maximized Windows" section, under the heading "Program Manager," are radio buttons labeled "Cascade" and "Tile". These two selections tell AnyView Professional to automatically tile or cascade your Program Manager groups after a resolution switch. Choose "No Effect" if you don't want your Program Manager rearranged after a resolution change.



See also:

[True Switch TrueSwitch Auto Match](#)

TrueSwitch Auto Match

Because of limitations in your video controller's video memory or driver capabilities, AnyView Professional provides a feature called TrueSwitch Auto-Match. Enabling this feature instructs AnyView Professional to intelligently decide which resolution or color depth to switch to should your video controller be unable to meet your request.

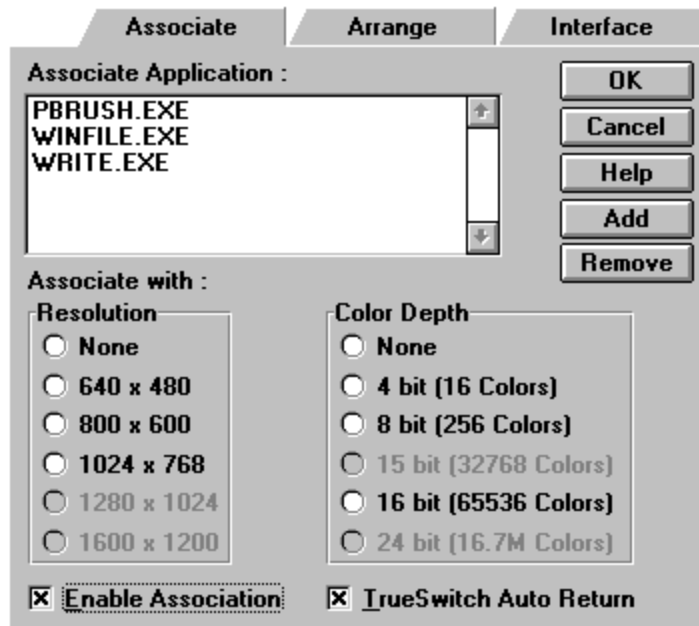
As an example, let's say that you are working at resolution 640 by 480 in the 16 million color depth. If you tried to switch to 1024 by 768 and your video controller could not accommodate you, AnyView Professional would normally give you an error message saying that the switch could not be made. Enabling TrueSwitch Auto-Match can avoid this error by downwardly switching your color depth so it can meet your 1024 by 768 resolution request. The same kind of downward switch occurs with resolutions should an "illegal" request for a higher color depth be made.



See also:

[The "Arrange Windows" Folder Tab](#)

The "Associate" Folder Tab



AnyView Professional can link a particular application with a specific resolution and/or color depth with its Association feature. After you have created an association, AnyView Professional automatically sets the desired screen resolution and color depth whenever you launch or change focus to the associated application. Access this feature by choosing the "Associate" Folder Tab under the "Options" file button.

The list box in the upper left corner shows the applications that currently have associations. To create a new association, click on the Add button. Select the program file with which you want to form an association by typing a file name or selecting a file from the list box. You can change the drive and directory if necessary by using the drive and directory selection boxes. Once you have selected the appropriate program file, select OK to return to the main Association dialog box, then use the radio buttons under "Associate With" to select the desired resolution and/or color depth.

To use the associations you have created, simply select the "Enable Associations" at the lower left side of the file folder. AnyView Professional will retain the setups for the associations as you created them even when you turn off the Enable Associations option.

Once associations have been created, you simply select an application by any of the normal Windows methods and AnyView Professional will automatically change to the assigned resolution and/or color depth.



See also:
[TrueSwitch Auto Return](#)

TrueSwitch Auto Return

If you are using the Association feature, you may find it helpful to have AnyView Professional's TrueSwitch Auto-Return take you back to whatever color depth and resolution you were in before you opened the associated application. Check the TrueSwitch Auto-Return box to turn on this feature.



The Calibration File Button

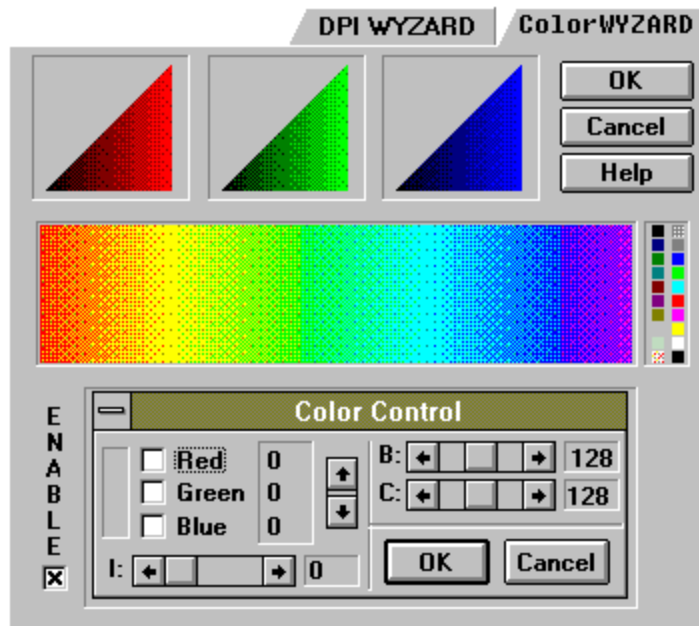
The Calibration File Button gives you access to two powerful calibration tools -- the Color WYZARD and the DPI WYZARD.

[The "Color WYZARD" Folder Tab](#)

[The "DPI WYZARD" Folder Tab](#)



The "Color WYZARD" Folder Tab



Using AnyView Professional's color correction utility, the Color WYZARD, all your color design tasks can be quick and easy. Color correction, by its nature, may seem confusing at first; however, you'll find that even its most basic properties are extremely useful in the long run.

Note: *Color calibration is available in 8-bit color depth (256 colors) only.*

The "Color WYZARD" file folder is divided into three areas. The first area, in the top left portion of the file folder, is what we call the Color Index boxes. The second area we will look at is the detachable Color Control toolbar near the bottom of the folder. The third portion of the folder is the long rainbow strip in the middle of the file folder called the Color Spectrum, next to which are examples of the twenty most common system colors.

Windows has a set of three primary colors with which it creates all the colors you ever see on your display. These colors are red, blue and green. To create any other colors, Windows puts certain values of the three primary colors together. Windows refers to these color combinations as RGB (red, green, blue) values. It uses an index of 0 to 255 to keep track of the values for each color. For instance, the color purple is made up of high values of red and blue, but none of the color green. Light blue is made up of higher values of blue, with some green, but very little red. If all three colors have an index of 0, the resulting color is black. White occurs when all three colors have an index of 255.

There are 255 shades each of red, green and blue with which Windows works. When you change one of these shades using the Color WYZARD, you actually calibrate the display to change the color of any other colors which use the same value. For instance: the color gray is made up of equal parts of red, green and blue all of their values are 192. If you were to change the shade of red 192, any color on the screen that uses the shade of red 192 will change as well. A purple that used the shade red 192 would change its shade to reflect the correction as well.

The Color Index boxes help you keep track of any corrections you've made to your system. They are actually graphs which display the default value of any shade versus any changed valued. You will notice that the Color Index boxes have right triangles in them where the colors on the left side are darker and the colors on the rights side are lighter. The horizontal axis of the boxes represents the "name" of the shade while the vertical axis represents the value of the shade, even if the name and the value are the same. For instance, we would say that, by default, the shade with the name red 10 has the value of 10. This would be a very dark red and would display in the box at the "10" intersection point of both the "name" axis and the "value" axis. When we change that shade's value to 56 for example, the shade which Windows sees as red 10 will now have the value of 56. That change will be reflected in the red Color Index box.

The Color Control toolbar is where you make your color corrections. There are two ways to pick a color which you would like to change. The first and easiest is to click on the system control menu (the box in the upper left corner of the Color Control toolbar with a hyphen centered in it) and choose "Pick Color." Your cursor will change into a "wand" with which you can choose any color on the Color Spectrum or anywhere else on your screen, including any colors on other windows. That color will appear in a box just left of the three color index value boxes labeled red, green and blue. The second way to choose a color is to use the index slider bar which is on the bottom left of the Color Control toolbar. Think of the index slider bar as the way to choose the "name" of a shade, as discussed earlier in this section. Sliding it from left (value 0) to right (value 255) chooses the shade you would like to change. All three color shade "names" will change at the same time.

In order to change the value of a color, check the checkbox of the color and then move the vertical slider bar up and down until you have achieved the color you wanted. You can change two color values or all three at the same time if you check the appropriate check boxes. When you have corrected the color to your specifications, hit the OK button. You will see that the Color Index boxes at the top of the file folder will reflect any changes that you made in addition to any changes on the screen.

Note: *Because the 256-color depth is palette aware, you see changes you make as you slide the Color Control slider bars. Clicking OK will accept any changes you make and clicking Cancel will discard them.*

Brightness and contrast, the slider bars on the right side of the Color Control toolbar, will change your display much like the knobs on your monitor. Having software controls for brightness and contrast, however, makes it easy to make changes for one or more sessions and then quickly return to your previous state.

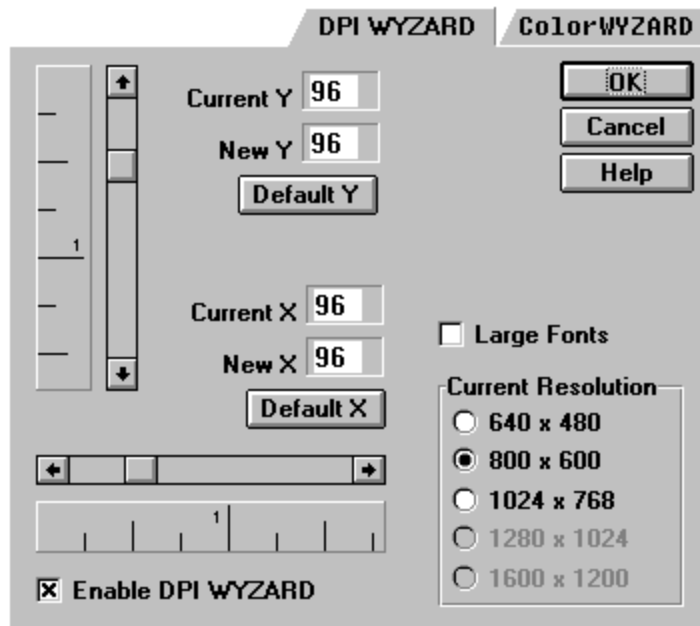


See also:

[The "DPI WYZARD" Folder Tab](#)

[Large and Small Font Emulation](#)

The "DPI WYZARD" Folder Tab



The DPI WYZARD allows you to adjust the number of dots-per-inch displayed on your screen so that one inch on the screen equals one inch on your final printed output. This feature is especially useful for desktop publishing, illustration, CAD or any other programs where an accurate screen preview is important. The default DPI setting is 96 dots per inch for the 640x480, 800x600 and 1024x768 resolutions. For larger resolutions, the default setting is 120 dots per inch.

Use the sliders in the dialog box to adjust both the horizontal and vertical scaling as you hold a ruler against the screen. Make separate DPI adjustments for each resolution that you use then you can be sure your measurements will be accurate both on the screen and on paper.

You may want to note that the adjustments made with the DPI WYZARD will only affect applications started after the DPI WYZARD has been changed. After changing the DPI, you must close any open applications and restart them in order for the new DPI settings to take effect at the resolution. AnyView Professional does, however, record your DPI WYZARD adjustments for future Windows sessions so that you only need to set it once.

Note: *Any application that does not check the Windows DPI when it starts will not be affected by DPI WYZARD. If you have an application that is not responding to your DPI settings, check with its manufacturer for more information.*



See also:

[The "Color WYZARD" Folder Tab](#)

Large and Small Font Emulation

Checking the "Enable Large Fonts" checkbox allows for the one-step switch to large fonts. After selecting this feature and restarting Windows as prompted by AnyView Professional, the following two changes will have been made to your system:

- * System fonts enlargement: The system and Program Manager fonts will have changed to a larger size, making them more readable in higher resolutions.
- * Resource enlargement: Resources such as buttons and title bars are enlarged for easier viewing.

You may also want to adjust the DPI to be higher in the higher resolutions. 120 dots per inch is the normal DPI setting for large fonts.

Note: *Using large fonts on your system affects all resolutions the large system fonts and resources will be viewable in the lower resolutions as well as the high.*



See also:

[The "DPI WYZARD" Folder Tab](#)

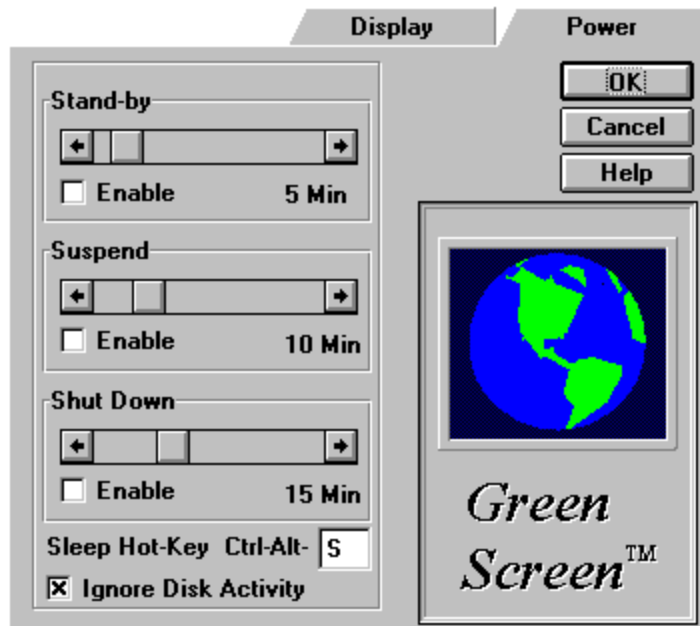
The Display File Button

Pressing the Display file button displays two new tabbed file folders: "Power" and "Display."

Green Screen / The "Power" Folder Tab
The "Display" Folder Tab



The "Power" Folder Tab



AnyView Professional provides an easy way for you to conserve energy and the life of your display monitor. Using Green Screen's Display Power Management Signaling (DPMS™) technology and a "green" monitor, your system can be instructed to "shut down" or "suspend" your screen's display after certain time intervals. With the need to protect both your monitor investment and our environment, it's important that Green Screen be an integral part of your computer's set up.

To make sure that Green Screen can work for your particular system, you should first check your monitor's documentation and confirm that your monitor is compliant with the Video Electronics Standards Association's (VESA criterion for DPMS monitors. If you're not sure if your monitor is compliant, Green Screen is still safe for use no harm can come to your monitor.

There are three settings which you can adjust for Green Screen which allows your monitor to go into energy saving states. The difference between them is simply the amount of energy your system saves during the mode and how much time it takes your monitor to "recover" or come back from its "sleep" state.

- * Stand-By Mode: Stand-By mode saves the least amount of energy of all the modes but takes the least time to recover from its "sleep" state. This mode is available on many, but not all, VESA compliant DPMS monitors.
- * Suspend Mode: Suspend mode saves a substantial amount of energy but

requires more time to recover from its "sleep" state. This mode is available on all VESA compliant DPMS monitors.

- * Shut Down (Off) Mode: Shut Down mode promotes maximum energy savings; however, your monitor is physically turned off and requires the most time to recover from its "sleep" state. This mode is available on all VESA compliant DPMS monitors. Non-DPMS monitors will not shut down.

All of these modes are canceled by the click of a key on the keyboard or by movement of the mouse even if your monitor turns itself off. Recovery time, even after Shut Down mode, is most often just a few seconds.

Green Screen helps non-DPMS monitors save energy as well any of the above states causes a non-DPMS monitor to go into alpha-numeric mode from the current graphical mode. This represents a 20% reduction in energy usage. Again, the graphical mode is restored simply by pressing a key or moving the mouse.

Activate Green Screen by clicking on the "Enabled" checkbox in one or all appropriate sections. The slide bars control the amount of time in which mode activation should take place.

When your monitor permits, we suggest that you set Green Screen to "cascade" the times for the separate modes so that it first enters Stand By mode, followed a short time later by Suspend mode, then going into Shut Down mode an interval after that.

Green Screen's hot key will activate the first mode you have enabled. The default key is [CTRL]+[ALT]+[S]. You may change the hot key to any [CTRL]+[ALT] combination that you find convenient.

Enabling "Ignore Disk Activity" means that Green Screen activates every time the keyboard or mouse is not touched for the allotted amount of time regardless of any disk activity that maybe taking place.



The "Display" Folder Tab

Look under the "Display" file folder if you have changed your monitor or added video memory to your video controller, and you need to inform AnyView Professional so that it can fulfill all of its functions correctly.

You can choose your monitor off the list in the upper left hand corner of the file folder if it appears there. If it doesn't appear on the list, choose one of the "generic" settings near the top of the list that best matches your monitor. The keyword "Max" next to a resolution indicates that it is the maximum resolution your monitor can achieve. Non-interlaced refers to the way the monitor presents the picture on the screen. Check your monitor's documentation for information on its maximum resolution and whether it is interlaced or non-interlaced.

For a video memory change, simply highlight the new value.

Once you have completed your changes, click OK. Otherwise, click Cancel to exit the folder without making any changes.



The System File Button

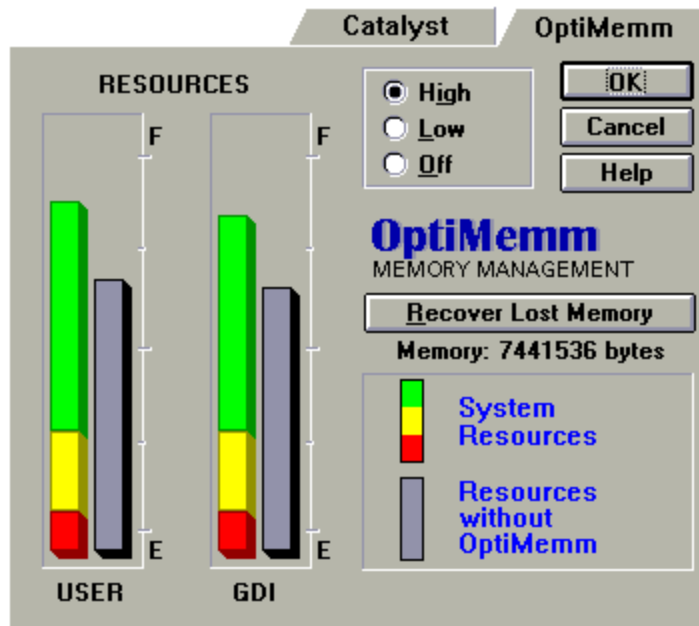
The System File Button provides access to the OptiMemm and Catalyst folder tabs.

[The "OptiMemm" Folder Tab](#)

[The "Catalyst" Folder Tab](#)



The "OptiMemm" Folder Tab



When Windows gets low on its resources, you can frequently get "out of memory" or "out of resources" messages that stop you from working. AnyView Professional gets you out of that rut with OptiMemm, the Windows memory management tool it extends your existing cap on available resources.

There are two sets of resources upon which Windows depends and have been designated by the system for use. The first are the User resources these resources are primarily menus and controls for the files and applications that you open. The second group, called GDI resources, are graphics related objects such as bitmaps, text and icons. Normally, when Windows runs low on these resources, your bitmaps can turn to black and your display begins to alter in strange ways. It used to be that the only way to get a grip on the situation was to restart Windows. Now, OptiMemm will take over resource control and keep you going even when normally you would receive "out of memory" errors.

There are three settings to OptiMemm they are Off, Low, and High. OptiMemm is turned to High by default. Because freeing and allocating resources can use up some global memory, AnyView Professional has a Low setting. You may want to use this setting if you only have four megs of RAM. If the AVPRO.DRV driver is not being used as your video driver, OptiMemm is turned to "Off."

Note: *Using OptiMemm's Off switch affects other features such as TrueSwitch Resolution and Color Depth Switching. Please see Appendix B, "Interdependence of AnyView Professional Features" of*

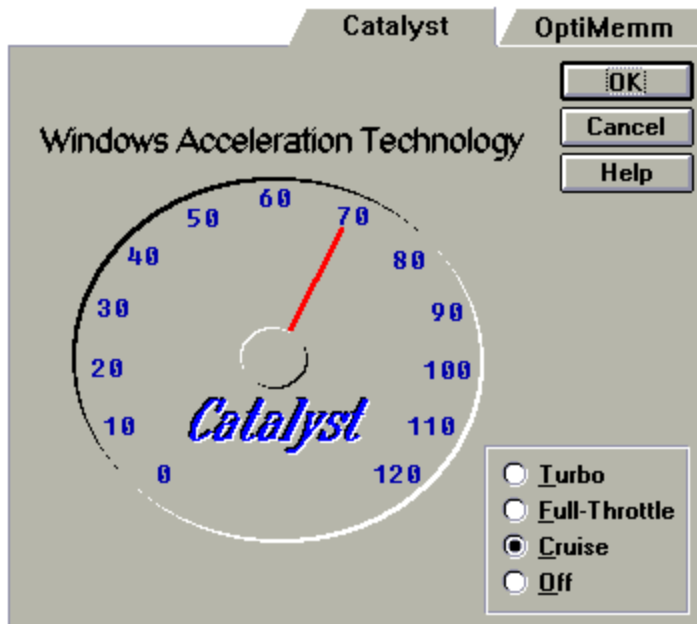
your manual for more information.

You can compare OptiMem's extension of your resources allotment simply by looking at the bar graphs. The right bars for each of the sets of resources show the "before OptiMem" state of your resource allotment. The left side displays a color coded bar reflecting the OptiMem state of the resources. If the top of the bar is green, you're in good shape with your resources. If yellow is showing, your allotment of resources is shrinking. At the red stage, you might want to consider closing down some applications or restarting your computer.

Note: The AnyView Professional video driver frees some resources simply by being loaded even if you have disabled the OptiMem feature. In this case, the bar graphs in the "OptiMem" file folder still display your current allotment savings. The Windows Program Manager and other resources displays will also reflect this savings.



The "Catalyst" Folder Tab



Catalyst uses a new technology that optimizes your graphics display by speeding up the Windows painting process. While you'll always receive some sort of speed increase, the actual percentage is dependent upon your current video drivers and how fast they are. In most cases, the speed increase in your system will be 10-25% faster than it was before AnyView Professional was installed.

The four settings for Catalyst are Off, Cruise, Full-Throttle and Turbo. Cruise is set as the default. The Full Throttle and Turbo settings increase Catalyst's performance; however, using the Cruise setting ensures that you are maximizing the capabilities of other AnyView Professional features such as TrueSwitch Resolution and Color Depth Switching and OptiMemmm.

Selecting this button will call the AnyView Control Panel.

Selecting this button will Change Resolution to 640 by 480 if your monitor and display adapter have this capability.

Selecting this button will Change Resolution to 800 by 600 if your monitor and display adapter have this capability.

Selecting this button will Change Resolution to 1024 by 768 if your monitor and display adapter have this capability.

Selecting this button will Change Resolution to 1280 by 1024 if your monitor and display adapter have this capability.

Selecting this button will Change Resolution to 1600 by 1280 if your monitor and display adapter have this capability.

Selecting this button will Change Color Depth to 16 colors if your monitor and display adapter have this capability.

Selecting this button will Change Color Depth to 256 colors if your monitor and display adapter have this capability.

Selecting this button will Change Color Depth to 32,000 colors if your monitor and display adapter have this capability.

Selecting this button will Change Color Depth to 64,000 colors if your monitor and display adapter have this capability.

Selecting this button will Change Color Depth to 16 million colors if your monitor and display adapter have this capability.

Selecting this button will execute the Virtual Desktop.

Selecting this button will execute the Bird's Eye View.

Selecting this button will execute the Hardware Zoom.

Selecting this button will call this Help file.

This isn't a button -- just an empty space. It doesn't do anything.

The manual and help file for AnyView Professional was written and laid out by Sean Kenefick. The Project Manager who oversaw this process was Janice V. Roberts.

They are both very nice people.

