

# TxEdit for Windows 95/NT

Copyright © 1995-1998 by Gregory Braun. All rights reserved.

## Overview

TxEdit is an easy-to-use text editor that makes a nice replacement for the MS Windows Notepad. Multiple documents can be edited using this MDI editor. Search and replace options are included. Text files of up to 10 Megabytes each can be edited and printed.

TxEdit for Windows 95/NT is fully Y2K compliant and will work with MS Windows 98 as well as Windows 95/NT systems.

## Drag & Drop

Drag and Drop documents to quickly open files for editing and viewing. To open files directly from the MS Windows Explorer or the desktop simply drag the file's icon to the TxEdit window and the file or files you have selected will be opened.

## Macintosh and UNIX Files

TxEdit can open and view Macintosh and UNIX formatted text files as well as normal Microsoft Windows and MS DOS ASCII text documents.

## SysEdit Utility

TxEdit can also be used as a replacement for the original SYSEDIT.EXE program that shipped with MS Windows 3.x systems.

## Custom Tools Menu

TxEdit can be configured to launch your favorite programs and development tools. TxEdit will optionally load your choice of tools and include the contents of the currently active window as that tool's command line argument.

## Automatic Text Macros

TxEdit can be configured to automatically insert predefined text and phrases that you type often. One command key can be used to insert entire paragraphs of text that you define. Up to 2000 characters of text can be used for each TxEdit macro that you define.

## Purchasing TxEdit

TxEdit for Windows 95/NT is a fully functioning program. It is **not** crippled in any way.

TxEdit for Windows 95/NT is distributed as shareware. You may evaluate it free of charge for 30 days. After 30 days you are required to register it. If after evaluating TxEdit for 30 days you decide not to register it you are required to remove it from your computer.

Registration entitles you to unlimited free updates and support via E-Mail or telephone.

You may also purchase TxEdit for Windows 95/NT using your credit card via the Internet or by telephone.

## Desktop Locations

TxEdit's location on the desktop is saved when the program is exited. Whenever you start TxEdit it will reappear on the desktop where you last placed it. TxEdit property sheet locations are also stored and reused the next time they are opened.

## Taskbar Tray

TxEdit for Windows 95/NT can be optionally configured to place its program icon in the Taskbar Icon Notification Tray. This option provides a simple means of keeping the taskbar button region clear for other running programs.

# Installing TxEdit

## Installation

To install TxEdit for Windows 95/NT on your computer simply create a new, empty folder and place the files; TXEDIT.EXE, TXEDIT.HLP and TXEDIT.CNT there.

<b>TXEDIT.EXE</b>	- The TxEdit Application
<b>TXEDIT.HLP</b>	- The Windows 95/NT Help File
<b>TXEDIT.CNT</b>	- The Help Contents File

If you installed TxEdit for Windows 95/NT using the SETUP.EXE program and selected the default installation setting TxEdit for Windows 95/NT will be installed in the **C:\Program Files\Software by Design** folder.

To integrate TxEdit for Windows 95/NT with the MS Windows Explorer select the **Help | Setup** menu item to open the TxEdit [Explorer Setup](#) property sheet.

## Note to Previous Users

If you are upgrading from an earlier version of TxEdit for Windows 95/NT make certain the older version is not running before installing the new release. Install the new version in the same folder as the prior version. Your TxEdit Settings will be retained and used by the new release.

**Note** The TXEDIT.INI file is no longer used and can be deleted. The various application settings specified in the [TxEdit Options](#) property sheet as well as the main window's size and location on the desktop are now stored in the MS Windows 95/NT [System Registry](#).

**Note** Some earlier versions of TxEdit for Windows 95/NT included a TXEDIT.WRI documentation file. This file has been replaced by the TXEDIT.HLP file and can now be deleted.

**Warning** If you rename the TXEDIT.EXE file you must also rename the HLP file using the same basename. For example if you change the TxEdit application file name to NewName.exe, rename the help file to NewName.hlp. Do not rename the TXEDIT.CNT file however. The HLP and CNT files *must* reside in the same folder as the TxEdit application file itself.

# Configuring TxEEdit

## **TxEEdit Options**

Select the **File | Options** menu item to display the TxEEdit Options property sheet. This window will allow you to change the various TxEEdit program settings listed below.

## **Show Tool Bar Tips**

Check this item to display small popup tip windows when the mouse pointer is placed over toolbar ribbon pushbuttons. A short description of the button currently beneath the mouse will be shown when this item is checked.

## **Place Icon in the Taskbar Tray**

Check this item to display a small TxEEdit program icon in the Taskbar Icon Notification Tray. If this item is selected and the TxEEdit window is minimized a button will not be added to the Taskbar, to restore the TxEEdit window on the desktop press the small icon in the taskbar tray instead. This option is available to keep the taskbar free for other running programs.

**Note** When this option is selected, clicking on the Close box in the upper right-hand corner of the window title bar will minimize TxEEdit instead of closing the application. To quit TxEEdit right-click with your mouse on the TxEEdit icon in the Taskbar tray. You may also use the **File | Exit** menu command or the **Ctrl+Q** keyboard shortcut.

## **Confirm Program Exit**

Check this item to confirm quitting TxEEdit for Windows 95/NT. When this option is selected you will be prompted to confirm your intention to exit TxEEdit and return to the MS Explorer desktop. This item is useful if you run TxEEdit from the tray and wish to avoid accidental exits when you right-click on the TxEEdit tray icon.

## **Dark Window Backgrounds**

Check this item to display the text in list windows with a dark background instead of the paper white background MS Windows normally uses when displaying text.

## **Set Word-Wrap when Opening Windows**

Check this box to turn word wrapping on when opening or creating new text document windows.

## **New Windows 95/98 Toolbar Style**

Check this item to display the toolbar ribbon using the newer “flat style” buttons.

## **Zoom the Editor Window at Startup**

Check this item to automatically zoom the editor window when TxEEdit is started. This option is provided to maintain consistency with the MS Windows Notepad editor’s default behavior.

## **Create a New Window at Startup**

Check this box to automatically create a new untitled document when TxEEdit is first started. This option is provided to maintain consistency with the MS Windows Notepad editor’s default behavior.

## **Reopen the Last File Used at Startup**

Check this box to reopen the last file used when TxEEdit is launched.

## **Open Locked Files as Read-Only**

Check this box to open write protected files as read-only. If this item is not checked and a locked file is opened you will be prompted to load the file as read-only.

## **Make Backup Copies**

Check this box to automatically make a backup copy of documents that have been edited. Backup files will have the same file name and a file extension of BAK. This item is included to maintain consistency with the MS Windows Notepad editor’s default behavior.

## **Save Changes when Closing**

Check this box to automatically save editing changes when a document is closed or TxEEdit is exited. If this box is not checked you will be prompted before closing documents that have changed.

## **Warning Sounds with Dialog Boxes**

Check this box to play a short beep sound when TxEEdit displays a warning dialog box or an error occurs.

## **OK**

Press this button when you have completed your selection of TxEEdit program options. When you press this button the TxEEdit Options property sheet will be closed and your settings will be saved.

## **Cancel**

Press this button to close the TxEEdit Options property sheet without making any changes. If you have made any changes to the option settings, and then press this button your changes will not be used, and your previous settings will remain in use.

**Default**

Press this button to use default TxEdit program options in this property sheet. These will be the same settings that were created when TxEdit was run for the first time.

**Help**

Press this button to open the TxEdit Help window and go directly to the Configuring TxEdit topic.

**Note** The options you have selected will be saved when you press the **OK** button. The desktop location of the TxEdit Options window itself will also be stored. Your settings will be saved in the MS Windows 95/NT [System Registry](#).

# TxEdit Explorer Setup

## **TxEdit Explorer Setup**

Select the **Help | Setup** menu item to display the TxEdit Setup property sheet. This window will allow you to integrate TxEdit for Windows 95/NT with the Microsoft Windows 95/NT Explorer. Use this command to create and remove MS Explorer shortcuts.

### **Create a Start Menu Item**

Check this item to create a TxEdit Start Menu entry. The TxEdit for Windows 95/NT program will be located in the Software by Design folder on the Programs menu. This item will be disabled (grayed) if a TxEdit item already exists in the Software by Design folder.

### **Remove this Start Menu Item**

Check this item to remove the TxEdit entry located in the Software by Design folder on the Programs menu. This item will be disabled (grayed) if a TxEdit item does not already exist in the Software by Design folder.

### **Create a Desktop Icon**

Check this item to create a TxEdit for Windows 95/NT program icon on the Explorer desktop. This item will be disabled (grayed) if a TxEdit desktop icon already exists.

### **Remove Icon from the Desktop**

Check this item to remove the TxEdit for Windows 95/NT program icon from the Explorer desktop. This item will be disabled (grayed) if a TxEdit desktop icon does not already exist.

### **Create a Startup Folder Item**

Check this item to automatically run TxEdit for Windows 95/NT whenever Microsoft Windows is started. This option creates a TxEdit program icon in the MS Windows Explorer Startup folder. This item will be disabled (grayed) if a TxEdit startup item already exists in the Startup folder.

### **Remove the Startup Folder Item**

Check this item to remove TxEdit from the MS Windows Explorer Startup folder. This item will be disabled (grayed) if a TxEdit startup item does not already exist in the Startup folder.

### **OK**

Press this button when you have completed your selection of MS Explorer shortcuts. When you press this button the TxEdit Setup property sheet will be closed and the MS Explorer shortcuts you have selected will be created or removed.

### **Cancel**

Press this button to close the TxEdit Explorer Setup property sheet without creating or removing any MS Explorer shortcuts.

### **Help**

Press this button to open the TxEdit Help window and go directly to the TxEdit Explorer Setup topic.

# TxEdit as a NotePad Replacement

## **TxEdit as a NotePad Replacement**

TxEdit for Windows 95/NT can be used as a replacement for the standard MS Windows NotePad editor. Select the **File | Options** menu item to display the TxEdit Options property sheet, and then pick the **Files** tab to specify file types that you would like to be associated with TxEdit instead of NotePad. The file types you specify will be opened by TxEdit when you double-click your mouse on any of these file icons.

You can also use this window to define custom file types that you would like to associate with TxEdit. Any file type you define will be opened by TxEdit when you select them using the MS Windows Explorer.

## **Edit ASCII Text Documents with TxEdit**

Check this item to associate ASCII text documents with TxEdit instead of MS NotePad. If this item is checked double-clicking your mouse on text files will automatically open them for editing using TxEdit instead of MS NotePad. Text documents have a file extension of TXT. Uncheck this box to re-assign MS NotePad as your default text file editor.

## **Edit Batch Scripts with TxEdit**

Check this item to associate MS DOS Batch Command Scripts with TxEdit instead of MS NotePad. If this item is checked right-clicking your mouse on batch files and then selecting **Edit** from the MS Explorer Popup menu will automatically open them for editing using TxEdit instead of MS NotePad. MS DOS Batch Scripts have a file extension of BAT. Uncheck this box to re-assign MS NotePad as your default batch file editor.

## **Edit Configuration Files with TxEdit**

Check this item to associate program configuration files with TxEdit instead of MS NotePad. If this item is checked double-clicking your mouse on configuration files will automatically open them for editing using TxEdit instead of MS NotePad. Configuration files have a file extension of REG, INI and INF. Uncheck this box to re-assign MS NotePad as your default configuration file editor.

## **Custom File Types to be Opened by TxEdit**

You may also specify custom file types and icons that you would like to associate with TxEdit. The file associations you specify will automatically be opened for editing in TxEdit when you double-click your mouse on these file icons in the MS Windows Explorer.

### **Type**

Use this entry field to specify a file extension type to be associated with TxEdit. The file type you specify will be opened for editing by TxEdit when you double-click your mouse on a file icon in the MS Windows Explorer.

### **File Description**

Use this entry field to specify a short file description for this file type. The file description you enter here will appear in MS Explorer file property sheets and in various file listings.

### **File Icons**

Use the [**<**] and [**>**] arrow buttons to select an icon to be associated with the custom file type and description you are creating. The icon you select for this file type will appear in the MS Windows Explorer.

### **OK**

Press this button when you have completed your selection of file associations. When you press this button the TxEdit file associations you have selected will be created or removed.

### **Cancel**

Press this button to close the TxEdit Options property sheet without creating or removing any TxEdit file associations.

### **Help**

Press this button to open the TxEdit Help window and go directly to the TxEdit NotePad Replacement topic.

# Configuring the Tools Menu

## Configuring the Tools Menu

TxEdit allows up to nine (9) applications to be added to the Tool menu. To define a tool select the **Tools | Define Tools** menu item. A property sheet will be displayed allowing you to specify the various tool parameters for the tool menu item you are defining.

### Tools

Use this list dropbox to select the tool menu item you would like to define or modify. Tool menu items that are not defined will have a title of Undefined. The Tool menu item properties for the tool you have selected will be reflected in the window below.

### Name

Enter a short name to be used as the tool menu item name. This name will appear on the Tools menu.

### Active

Check this box to enable the tool menu item. If this item is not checked the tool name will appear on the Tools menu but the item will be disabled (grayed).

### Minimize TxEdit on Tool Launch

Check this box to minimize to TxEdit's main program window to an icon on the MS Explorer Taskbar or Icon Notification Tray. This option is useful to reduce screen clutter when TxEdit is used with other applications.

### Program

Enter the name of the program you would like to associate with the tool menu item. Use the entire path when specifying a tool menu item, or press the browse button [...] to the right of the entry field to select an application using the standard MS Windows file browser.

### Command

Enter any option command arguments this tool definition may need. This is an optional item and may be left blank if you simply need to launch a program without any additional command arguments.

### Use Active Window as Command Tail

Check this box to add the current TxEdit editing window as the program's command tail. This selection allows you to use the current editing window's filename as an additional argument to the program being launched. If a command line argument is specified and this box is also checked the program will be invoked with both the command line arguments you specified and the window's filespec as the command tail.

### Save Changes Before Launching

Check this box to automatically save any editing changes made to the current window before launching the tool menu item you are specifying.

### Working Directory

If this entry is filled with a directory name, the folder you specify will be selected and made the default working directory before launching the menu item tool. Press the browse button [...] to the right of this entry field to automatically select a folder using the folder browser dialog box.

### OK

Press this button when you have completed your selection of Tool settings. When you press this button the Tool Customization property sheet will be closed and your tool settings will be saved.

### Cancel

Press this button to close the Tool Customization property sheet without making any changes. If you have made any changes to the tool settings, and then press this button your changes will not be used, and your previous settings will remain in use.

### Delete

Press this button to delete the currently displayed Tool Settings. You will be asked to confirm this command before the current tool is deleted.

### Help

Press this button to open the TxEdit Help window and go directly to the Configuring the Tool Menu topic.

**Tip** Use the **Ctrl+1** through **Ctrl+9** [shortcut keys](#) to quickly invoke the tool menu items you have defined.

**Note** The Tool Menu settings you have selected will be saved when you press the **OK** button. The desktop location of the Tool Customization window itself will also be stored. Your settings will be saved in the MS Windows 95/NT [System Registry](#).

# Setting File Filters

## Setting File Filters

TxEdit can be configured to open selected file types using the **File | Options** menu item and then picking the **Filters** tab.

Both the file description and extension types can be customized. To specify custom file filters select the item to be edited and change the text field for that item. After making the desired change press the **[Accept]** button at the bottom of the list box to save the changes.

The file filters you have defined will be available in the File Open dialog box.

## Descriptions

This list displays the currently defined file filter descriptions. To edit these select an item from the list. The item you select will appear in the editing window directly above the Description list. Make the changes you desire and then press the **[Accept]** button at the bottom of the list of descriptions.

**Note** Press the **[Accept]** button below this list immediately after editing a File Filter Description or your changes will not take effect.

## File Extensions

This list displays the currently defined file filter extensions. To edit these select an item from the list. The item you select will appear in the editing window directly above the File Extension list. Make the changes you desire and then press the **[Accept]** button at the bottom of the list of extensions.

**Note** File extensions must be separated by a semi-colon if you define more than a single file type.

**Note** Press the **[Accept]** button below this list immediately after editing a File Filter Extension or your changes will not take effect.

## Select this Folder when Starting TxEdit

Check this box to set the current working directory to the folder specified above. When this settings is active TxEdit will select the specified directory at launch.

## OK

Press this button when you have completed your selection of File Filter settings. When you press this button the File Filters property sheet will be closed and your settings will be saved.

## Cancel

Press this button to close the File Filters property sheet without making any changes. If you have made any changes to the File Filter settings, and then press this button your changes will not be used, and your previous settings will remain in use.

## Default

Press this button to use default TxEdit File Filters settings in this property sheet. These will be the same settings that were created when TxEdit was run for the first time.

## Help

Press this button to open the TxEdit Help window and go directly to the Setting File Filters topic.

**Note** The File Filters you have selected will be saved when you press the **OK** button. The desktop location of the File Filters window itself will also be stored. Your settings will be saved in the MS Windows 95/NT [System Registry](#).



# TxEdit Page Setup

## TxEdit Page Setup

TxEdit can be configured to use custom headers and footers when printing text documents using the **File | Page Setup** menu item.

## TxEdit File Information Macros

Displayed below is a list of TxEdit File Information Macros available for inclusion in custom headers and footers.

<b>\$F</b> = File Name	The current document name with full drive and path will be inserted at the point where the \$F macro appears.
<b>\$f</b> = File Name	The current document name without a drive or path will be inserted at the point where the \$f macro appears.
<b>\$P</b> = Page Number	The current page number will be inserted at the point where the \$P macro appears.
<b>\$T</b> = Current Time	The current time will be inserted at the point the \$T macro appears.
<b>\$D</b> = Current Date	The current date in long format will be inserted at the point the \$D macro appears.
<b>\$d</b> = Current Date	The current date in short format will be inserted at the point the \$d macro appears.

Any other text specified in a header or footer will be treated as literal and will appear just as defined. To include the actual '\$' character in a header or footer use '\$\$'.

## Header

Define the header text you wish to have appear at the top of each page printed. See the File Information Macros section above for a complete description of those items that can automatically be included in a header.

## Print Header

Check this item to enable the header defined above. If this item is not checked the header you defined above will not be printed. This item is included to facilitate turning header printing on and off with out deleting the header you have defined

## Center Header

Check this item to center the header at the top of each printed page. If this item is not checked the header you have defined above will be printed starting at the left margin.

## Footer

Define the footer text you wish to have appear at the bottom of each page printed. See the File Information Macros section above for a complete description of those items that can automatically be included in a footer.

## Print Footer

Check this item to enable the footer defined above. If this item is not checked the footer you defined above will not be printed. This item is included to facilitate turning footer printing on and off with out deleting the footer you have defined

## Center Footer

Check this item to center the footer at the bottom of each printed page. If this item is not checked the footer you have defined above will be printed starting at the left margin.

## Printer Page Margins

Use the following four entry fields to specify the page margins to be used when printing documents. Margin widths are expressed in decimal inches, for example 1.25, 0.50, .25 or 1 are all valid margin widths.

## Left

Enter the left margin width in this field. Document text will be printed starting from this position on the left side on the page.

## Right

Enter the right margin width in this field. Document text will be printed across the page to this position.

## Top

Enter the top margin width in this field. Document text will be printed starting from this position at the top of the page.

## Bottom

Enter the bottom margin width in this field. Document text will be printed down to this position at the bottom of the page.

**Note** If you have defined a header or footer to be printed on each page make certain that you set the top and bottom margin widths to at least 0.10 inches or your document text will be printed directly on top of the headers and footers you defined.

**OK**

Press this button when you have completed your selection of Page Setup settings. When you press this button the Page Setup property sheet will be closed and your settings will be saved.

**Cancel**

Press this button to close the Page Setup property sheet without making any changes. If you have made any changes to the Page Setup settings, and then press this button your changes will not be used, and your previous settings will remain in use.

**Help**

Press this button to open the TxEdition Help window and go directly to the TxEdition Page Setup topic.

**Note** The Page Setup settings you have selected will be saved when you press the **OK** button. The desktop location of the Page Setup window itself will also be stored. Your Page Setup settings will be saved in the MS Windows 95/NT [System Registry](#).

# Defining TxEdit Macros

## Defining TxEdit Macros

TxEdit allows up to nine (9) custom text macros to be added to the Macros menu. To define a macro select the **Macros | Define Macros** menu item and pick the text macro item you would like to create or modify. A property sheet will be displayed allowing you to specify the macro name and text to be used for the macro menu item you are defining.

TxEdit text macros provide a simple means of inserting standard text and phrases in the documents you create and edit. Each TxEdit macro you define can contain up to 2000 characters of text.

## Macro

Use this list dropbox to select the text macro item you would like to define or modify. Text macro items that are not defined will have a title of Undefined. The Text macro item properties for the macro you have selected will be reflected in the window below.

## Name

Enter a short name to be used as the macro menu item name. This name will appear on the Macros menu.

## Active

Check this box to enable the text macro item. If this item is not checked the text macro name will appear on the Macros menu but the item will be disabled (grayed).

## Text

Enter the text you want to have inserted automatically in the current document when this macro is invoked from the Macros menu.

## OK

Press this button when you have completed your selection of TxEdit macro settings. When you press this button the TxEdit Macro definition property sheet will be closed and your text macro settings will be saved.

## Cancel

Press this button to close the TxEdit Macro definition property sheet without making any changes. If you have made any changes to the text macro settings, and then press this button your changes will not be used, and your previous settings will remain in use.

## Delete

Press this button to delete the currently displayed TxEdit Macro Settings. You will be asked to confirm this command before the current text macro is deleted.

## Help

Press this button to open the TxEdit Help window and go directly to the Defining TxEdit Macros topic.

**Tip** Use the **Alt+1** through **Alt+9** shortcut keys to quickly invoke the macro menu items you have defined.

**Note** The Macro Menu settings you have selected will be saved when you press the **OK** button. The desktop location of the TxEdit Macro Definition window itself will also be stored. Your settings will be saved in the MS Windows 95/NT System Registry.

# TxEdit Time Stamp Settings

## **TxEdit Time Stamp Settings**

Select the **File | Options** menu item to open the TxEdit Options property sheet and then click on the **Time Stamp** tab to display Time Stamp Settings. This window will allow you to specify the time stamp format used when inserting timestamps in TxEdit text documents. A description of the various settings follows.

### **Regional**

Press this button to open and view the MS Windows 95/NT Regional Settings Control Panel. These settings determine the **Time** and **Date** formats that MS Windows uses. It is from here that you can specify the time format for 12 or 24 hour time strings as well as the format for long and short date strings. The settings specified here will be used when TxEdit inserts a timestamp in a text document.

As you make changes to the Time Stamp settings the currently selected format will be displayed in the TxEdit Time Stamp Settings property sheet. The format displayed will be what is inserted when you add timestamps to TxEdit documents.

### **Use System Date**

Check this box to include the current system date in timestamps inserted in TxEdit documents. If this box is checked the long and short date format radio buttons directly beneath this item will be active.

### **Long Dates**

Check this radio button to display dates in a long format such as; Mon, Jan 1 1997 or Monday, January 1 1997.

### **Short Dates**

Check this radio button to display dates in a short format such as 01/01/97.

### **Use System Time**

Check this box to include the current system time in timestamps inserted in TxEdit documents. If this box is checked the time and date format radio buttons directly beneath this item will be active.

### **Date - Time**

Check this radio button to display the current system date before the time.

### **Time - Date**

Check this radio button to display the current system time before the date.

### **OK**

Press this button when you have completed your selection of Time Stamp settings. When you press this button the TxEdit Time Stamp Settings property sheet will be closed and your settings will be saved.

### **Cancel**

Press this button to close the TxEdit Time Stamp Settings property sheet without making any changes. If you have made any changes to the settings, and then press this button your changes will not be used, and your previous settings will remain in use.

### **Help**

Press this button to open the TxEdit Help window and go directly to the TxEdit Time Stamp Settings topic.

**Note** The options you have selected will be saved when you press the **OK** button. The desktop location of the TxEdit Time Stamp Settings window itself will also be stored. Your settings will be saved in the MS Windows 95/NT System Registry.

# Recent Files Configuration

## **Recent File Configuration**

Select the **Recent | Settings** menu item to open the Recent Files Configuration dialog box. Use this window to select the various Recent Files settings described below.

The first section of this dialog box allows you to specify file names to be ignored when adding file names to the Recent Files menu.

### **Ending with the 'BAK' File Extension**

Check this item to ignore files ending with the *.BAK* file extension.

### **Starting with the Prefix 'Backup of'**

Check this item to ignore files starting with the prefix *Backup of*.

The second section of this dialog box allows you to remove all file names from the Recent Files menu.

### **Clear the Recent Files Menu**

Check this item to clear the Recent Files menu. Checking this item will delete the 9 most recently loaded TxEEdit documents.

### **OK**

Press this button when you have completed your selection of Recent File settings. When you press this button the Recent Files Configuration dialog box will be closed and your settings will be saved.

### **Cancel**

Press this button to close the Recent Files Configuration dialog box without making any changes. If you have made any changes to the Recent File settings, and then press this button your changes will not be used, and your previous settings will remain in use.

### **Help**

Press this button to open the TxEEdit Help window and go directly to the Recent Files Configuration topic.

# File Menu

## File Menu Commands

The File menu provides commands to work with the document files used by TxEEdit. A short description of each item follows:

### **New**

Creates a new TxEEdit document. The **Ctrl+N** shortcut can be used for this command.

### **Open**

Opens an existing TxEEdit document, and loads it for editing or viewing. When this item is selected the standard MS Windows Explorer file browser will be displayed, use this window to select the document you wish to work with. Check the **Open as Read-Only** box to load documents for viewing only. The **Ctrl+O** shortcut can be used for this command.

### **Properties**

Displays a small window showing file properties for the currently selected TxEEdit document. This window will display the document's file name, folder location, size, last modification date and file access permissions. The **Alt+Enter** shortcut can be used for this command.

### **Close**

Closes the currently active document. If the document has been edited you will be prompted to save or discard the changes before closing. The **Ctrl+W** shortcut can be used for this command.

### **Save**

Saves changes made to the currently selected document. This menu will be disabled (grayed) if no changes have been made to the document since it was last loaded or saved. The **Ctrl+S** shortcut can be used for this command.

### **Save As**

Saves the currently active document with a new name. When this item is selected the standard MS Windows Explorer file browser will be displayed, use this window to specify a new name for the document. If a file extension is not specified the default .TXT extension will be automatically appended. To intentionally save a file without a file extension add a single '.' character at the end of the file name.

### **Discard**

Use this item to discard editing changes made to a document, and reload the previous version from disk. This item will be disabled (grayed) if the document currently being edited has not changed since it was last saved or loaded.

### **Page Setup**

Opens the Page Setup property sheet and allows you to change TxEEdit page layout settings.

### **Printer Setup**

Opens the standard MS Windows Printer Setup dialog box. Use this command to select a printer and page orientation.

### **Print**

Prints the currently selected TxEEdit document on your system's printer. A dialog box will appear before printing is started to allow you to select the printer to be used and various other printer options. The **Ctrl+P** shortcut can be used for this command.

### **Options**

Opens the TxEEdit Options property sheet and allows you to change TxEEdit program settings. Use this command to configure the TxEEdit program.

### **Recent Files**

This command displays a sub-menu containing up to 9 recently edited files. Select a file name from this list to quickly reopen a recently edited file.

### **Exit**

Closes the TxEEdit program and returns control to the Explorer desktop. The **Ctrl+Q** shortcut can be used for this command.

**Tip** Commonly used File commands can be invoked using shortcut keys or buttons on the toolbar ribbon.

# Edit Menu

## Edit Menu Commands

The Edit menu provides commands used to edit the contents of TxEdit documents. A short description of each item follows:

### Undo

Undoes the last editing operation. The **Ctrl+Z** and **Alt+Backspace** shortcuts can be used for this command.

### Cut

Cuts the current selection from the document and places it on the Clipboard. The **Ctrl+X** and **Shift+Del** shortcuts can be used for this command.

### Copy

Copies the current selection to the Clipboard. The **Ctrl+C** and **Ctrl+Ins** shortcuts can be used for this command.

### Paste

Pastes the contents of the Clipboard at the current selection point. The **Ctrl+V** and **Shift+Ins** shortcuts can be used for this command.

### Delete

Deletes the current selection, but does not place a copy on the Clipboard. The **Del** shortcut can be used for this command.

### Select All

Selects the entire contents of the current document. The **Ctrl+A** shortcut can be used for this command.

### Save Selection As

Saves the currently selected section of text as a separate disk file. You will be prompted to enter a file name for the text you wish to save using the standard MS Windows Explorer File Browser.

### Insert File

Opens and inserts an ASCII text file at the current cursor location. You will be prompted to enter the name of the file you wish to insert using the standard MS Windows Explorer File Browser.

### Insert Date

Use this command to insert the current date and time in the active document. The **Ctrl+D** shortcut can be used for this command. Use the [Time Stamp Settings](#) to specify the format of timestamps.

### Find

Opens the [Find](#) dialog box and allows you to search for specified text in the currently active document. The **Ctrl+F** or **F2** shortcut can be used for this command.

### Find Again

Repeats the current search. The **F3** shortcut can be used for this command.

### Replace

Opens the [Replace](#) dialog box and allows you to search for specified text and optionally replace it in the currently active document. The **Ctrl+R** shortcut can be used for this command.

### Sort Selection

Sorts the currently selected range of lines in the active document. The **Alt+S** shortcut can be used for this command.

### Lowercase

Converts the currently selected text to all lowercase characters. The **Alt+L** shortcut can be used for this command.

### Uppercase

Converts the currently selected text to all uppercase characters. The **Alt+U** shortcut can be used for this command.

### Read Only

Turns editing permission on and off. If this item is checked the document can be viewed but editing is not allowed.

### Show Clipboard

Opens the MS Windows Clipboard and displays its current contents.

**Tip** Commonly used Edit commands can be invoked using [shortcut keys](#) or buttons on the [toolbar ribbon](#).

# View Menu

## View Menu Commands

The View menu provides commands used to change TxEEdit display options. These items provide a means of changing the TxEEdit window appearance. A short description of each item follows:

### **Toolbar**

Use this command to turn the toolbar ribbon on and off. If this item is checked the TxEEdit toolbar ribbon will be displayed below the menu bar. To hide the toolbar ribbon uncheck this item. Most commonly used TxEEdit menu commands have a toolbar button. If the toolbar ribbon is turned off you will have to use the normal TxEEdit menu commands.

### **Status Bar**

Use this command to turn the status region on and off. If this item is checked the TxEEdit status region will be displayed at the bottom of the TxEEdit window. To hide the status region uncheck this item. The status region displays current program status and will also display a brief description of each menu command as the mouse is moved through these items.

### **Customize Toolbar**

Use this command to customize the TxEEdit for Windows 95/NT toolbar ribbon. The standard MS Windows Toolbar Customization dialog box will be opened and displayed when this command is selected.

### **Word-Wrap**

Use this command to turn word wrapping on and off if the currently active window. When word wrapping is activated for the current document a small check mark will appear next to this menu item.

### **Go to Line**

Opens the Go To Line dialog box and allows you to specify the line you wish to place the cursor on. The **Ctrl+G** shortcut can be used for this command.

### **OEM to ANSI**

Converts the text in the currently active window from the OEM character set to ANSI characters.

### **ANSI to OEM**

Converts the text in the currently active window from the ANSI character set to OEM characters.

### **Font**

This item displays a popup menu containing **D**isplay and **P**rinter font selections. When either of these items is selected the standard MS Windows Font selection dialog box will be displayed. Use this window to select the font face, size and style to be used for display windows and printing. The font information you select will be saved and used whenever TxEEdit is launched.

### **Minimize**

Minimizes the TxEEdit window to a button or icon on the taskbar. The **Ctrl+Y** shortcut can be used for this command.

### **Always on Top**

Use this command to keep the TxEEdit window top most on the desktop. When this item is checked the TxEEdit window will float above all other non-topmost windows on the desktop. This item is useful if you normally run TxEEdit with a small window that would be easily obscured by other applications. The **Ctrl+T** shortcut can be used for this command.

### **Refresh**

Reloads a document from disk. The **F5** shortcut can be used for this command. This item will be disabled (grayed) if the document has been modified. To reload a document that has been modified use the Discard command found on the File Menu.

**Tip** Commonly used View commands can be invoked using shortcut keys or buttons on the toolbar ribbon.



## Tools Menu

### **Tools Menu Commands**

The Tools menu provides commands used to launch TxEEdit custom tools. The custom tools you have defined can easily be launched using this menu.

The upper region of this menu contains room for up to 9 custom tool items. To define a custom tool use the **Tools | Define Tools** menu command and select the tool you wish to configure.

**Tip** Commonly used Tool commands can be invoked using the shortcut keys; **Ctrl+1 – Ctrl+9**.

## Macros Menu

### Macros Menu Commands

The Macros menu provides the commands used to insert user-defined text in the document currently being edited. The custom text macros you have defined can easily be inserted in the documents you create and edit using this menu.

The upper region of this menu contains room for up to 9 custom text macro items. To define a custom text macro use the **Macros | Define Macros** menu command and select the text macro item you wish to define. Each TxEit macro you create can contain up to 2000 characters of text.

**Tip** Commonly used Macro commands can be invoked using the shortcut keys; **Alt+1 – Alt+9**.

## Recent Files Menu

### **Recent Files Menu Commands**

The Recent Files menu contains a list of the last 9 TxEEdit documents loaded.

Select a file name from this menu to quickly re-open a TxEEdit document you worked with recently.

Select the **Recent | Settings** menu item to configure the Recent Files menu.

# Windows Menu

## **Windows Menu Commands**

The Windows menu provides commands used to manipulate TxEEdit document windows. A short description of each item follows:

### **Tile Vertically**

Arranges all open document windows vertically within the TxEEdit window. The **F7** shortcut can be used for this command.

### **Tile Horizontally**

Arranges all open document windows horizontally within the TxEEdit window. The **F4** shortcut can be used for this command.

### **Cascade**

Arranges all open document windows in an overlapping fashion within the TxEEdit window. The **F6** shortcut can be used for this command.

### **Arrange Icons**

Arranges all minimized document windows along the bottom edge of the TxEEdit window. The **F8** shortcut can be used for this command.

### **Duplicate**

Makes a copy of the currently active document in a new window.

### **Close All**

Closes all document windows currently opened for editing. If document windows contain modified text you will be prompted to save the changes first before the windows are closed.

### **Open a List**

Opens a list of documents specified in an indirect file list. The standard MS Windows Explorer File browser will be displayed, allowing you to select the indirect file list to be opened. The **Ctrl+L** shortcut can be used for this command.

### **Build a List**

Builds an indirect file list of all currently open document windows. This list can be saved to disk and used later to open a group of files associated with a specific project. The **Ctrl+B** shortcut can be used for this command.

### **Error Codes**

Opens a small window and displays a complete list of MS Windows 95/NT error codes and descriptions. The **Ctrl+E** shortcut can be used for this command.

### **ASCII Chart**

Opens and displays the ASCII Chart window. Use this window to display ASCII character codes and to copy characters not easily available from the IBM PC keyboard.

### **SysEdit Files**

Opens the SysEdit property sheet and allows the specification of up to nine configuration files to be opened automatically when the TxEEdit /L switch is used.

**Tip** Commonly used Window commands can be invoked using shortcut keys or buttons on the toolbar ribbon.

# Help Menu

## Help Menu Commands

The Help menu provides commands used to get help with TxEdit operations. A short description of each item follows:

### **Contents**

Opens the TxEdit Help window and displays the Table of Contents. The **F1** shortcut can be used for this command.

### **Search**

Opens TxEdit Help and displays the Search window. You can use this window to search for specific TxEdit help topics.

### **How to Use Help**

Opens a Help window that explains how to use the MS Windows 95/NT Help program.

### **Register**

Displays the TxEdit Shareware Registration Wizard. This wizard allows you to register TxEdit for Windows 95/NT for authorized use.

### **Setup**

Displays the TxEdit Explorer Setup property sheet. This window provides options to integrate TxEdit with the MS Windows Explorer. Use this window to create MS Explorer Start Menu items and desktop icons.

### **Web Site**

Opens your web browser application and goes directly to the Software Design web site on the Internet.

### **Send E-Mail to Author**

Opens your Internet eMail client application and allows you to send an eMail message directly to the author at [Gregory\\_Braun@CompuServe.com](mailto:Gregory_Braun@CompuServe.com).

**Note** You must have your Internet eMail client software configured as your default Simple MAPI client for this command to work properly.

### **About TxEdit**

Displays the TxEdit splash box. This window contains program information, the current version of TxEdit you are running and a program copyright notice. Click the mouse anywhere in this window to close it

**Tip** Commonly used Help commands can be invoked using shortcut keys or buttons on the toolbar ribbon.

# Customizing the Toolbar

## Customizing the Toolbar Ribbon

The TxEEdit toolbar ribbon can be customized by selecting the **View | Customize Toolbar** menu item. The standard MS Windows 95/NT Toolbar Customization dialog box will be opened when this command is invoked. Use this window to add and remove TxEEdit toolbar buttons as well as to change the order that the buttons appear on the toolbar ribbon.

**Tip** you can also move and delete toolbar buttons without opening the Toolbar Customization dialog box by simply shift-clicking with your mouse and dragging the button to a new location on the TxEEdit toolbar ribbon itself. To delete a button, shift-click and drag the button off of the TxEEdit toolbar ribbon.

**Note** Some versions of MS Windows 95 redraw the toolbar ribbon height incorrectly after customization, if this happens exit TxEEdit and then restart it again to restore the proper toolbar ribbon height.

## Available Buttons

This list will contain the buttons available for adding to the TxEEdit toolbar ribbon. Only buttons not currently installed on the toolbar ribbon will be displayed in this list.

## Toolbar Buttons

This list will contain the buttons currently installed on the TxEEdit toolbar ribbon.

## Add

Press the **Add** button after selecting a toolbar button from the Available list. The tool button you have selected will be added to the TxEEdit toolbar ribbon at the current selection point.

## Remove

Press the **Remove** button after selecting a toolbar button from the Toolbar list. The tool button you have selected will be removed from the TxEEdit toolbar ribbon.

## Close

Press the **Close** button to finish toolbar customization. The selection of toolbar buttons that you chose to include will be saved and reloaded whenever TxEEdit for Windows 95/NT is started.

## Reset

Press the **Reset** button to restore the TxEEdit toolbar ribbon to its original default settings.

## Help

Press the **Help** button to open the TxEEdit Help file and go directly to the Customizing the Toolbar topic.

## Move Up

Use this button to move the currently selected button up one place in the toolbar button list. The currently selected button will appear one place to the left on the actual TxEEdit toolbar ribbon when this command is used.

## Move Down

Use this button to move the currently selected button down one place in the toolbar button list. The currently selected button will appear one place to the right on the actual TxEEdit toolbar ribbon when this command is used.

# Toolbar Buttons

## Tool Ribbon Buttons

Most commonly used TxEEdit menu commands can also be quickly invoked by pressing a button on the toolbar ribbon displayed at the top of the main window. These buttons work exactly the same way as the corresponding menu items that they duplicate.

The Toolbar selection on the View menu must be selected to display the toolbar ribbon.

The number of buttons and the order that the buttons appear on the TxEEdit toolbar ribbon may differ from this description if you have customized the toolbar ribbon.



**New** - Create a new document



**Open** - Open an existing document



**Save** - Save changes made to a document



**Close** - Close the current document



**Save As** - Save document with a new name



**Close All** - Close all open documents



**Save All** - Save all modified documents



**Print** - Print the current document



**Properties** - Show document properties



**Undo** - Undo last editing change



**Cut** - Cut the current selection



**Copy** - Copy the current selection



**Paste** - Paste Clipboard contents



**Delete** - Delete the current selection



**Uppercase** - convert to uppercase



**Lowercase** - convert to lowercase



**Show Clipboard** - Open the Clipboard



**Timestamp** - Insert current date and time



**Find** - Find the specified text



**Again** - Find the specified text again



**Replace** - Search and replace specified text



**Go To** - Go to a specified line



**Sort** - Sort the current selection



**Word Wrap** - Toggle word wrapping



**Duplicate** - Duplicate current window



**Tile Vertically** – Tile windows vertically



**Tile Horizontally** – Tile windows horizontally



**Cascade** – Arrange windows



**Build a List** – Create an indirect list



**Open a List** – Open an indirect list



**Topmost** – Make the TxEEdit window topmost



**Refresh** – Reload the current document from disk.



**Chart** – Display the ASCII/ANSI Chart



**Errors** – Display MS Windows 95/NT Error Codes



**Font** - Open the Font selection dialog



**Options** - Open the TxEEdit Options dialog



**Help** - Open this Help file



**About** - Show TxEEdit splash box

**Tip** If the Show ToolBar Tips option is selected a small popup tip window will appear when the mouse pointer is placed over a button. A short description of what each button does can be viewed using this method.



# Shortcut Keys

## Shortcuts

Shortcut keys allow you to quickly invoke TxEdit menu commands without first displaying the menu and then selecting an item from it. The most commonly used TxEdit commands can be invoked using the following shortcut keys.

### File Menu

<b>Ctrl+N</b>	Create a new Document
<b>Ctrl+O</b>	Open an existing document
<b>Alt+Enter</b>	Show properties for current document
<b>Ctrl+W</b>	Close the current document
<b>Ctrl+S</b>	Save changes made to the document
<b>Ctrl+P</b>	Print the current document
<b>Ctrl+Q</b>	Exit TxEdit, and return to the desktop

### Edit Menu

<b>Ctrl+Z</b>	Undo the last editing change
<b>Alt+Backspace</b>	Undo the last editing change
<b>Ctrl+X</b>	Cut the current selection
<b>Shift+Del</b>	Cut the current selection
<b>Ctrl+C</b>	Copy the current selection
<b>Ctrl+Ins</b>	Copy the current selection
<b>Ctrl+V</b>	Paste to the current position
<b>Shift+Ins</b>	Paste to the current position
<b>Del</b>	Delete the current selection
<b>Ctrl+A</b>	Select the entire document
<b>Ctrl+D</b>	Insert date and time in the current document
<b>Ctrl+F</b>	Find specified text
<b>F2</b>	Find specified text
<b>F3</b>	Find specified text again
<b>Ctrl+R</b>	Search and replace specified text
<b>Alt+S</b>	Sort the current selection alphabetically
<b>Alt+L</b>	Convert current selection to lowercase
<b>Alt+U</b>	Convert current selection to uppercase

### View Menu

<b>Ctrl+Y</b>	Minimize TxEdit to a button or icon
<b>Ctrl+T</b>	Make the TxEdit window topmost
<b>F5</b>	Reload a document from disk

### Tools Menu

<b>Ctrl+1 – Ctrl+9</b>	Launch a custom tool
------------------------	----------------------

### Macros Menu

<b>Alt+1 – Alt+9</b>	Insert a custom text macro
----------------------	----------------------------

### Windows Menu

<b>F7</b>	Tile windows vertically
<b>F4</b>	Tile windows horizontally
<b>F6</b>	To cascade windows
<b>F8</b>	To arrange icons
<b>Ctrl+L</b>	Open an AutoLoad file list
<b>Ctrl+B</b>	Build an AutoLoad file list
<b>Ctrl+E</b>	Open the MS Windows 95/NT Error Codes window

### Help Menu

<b>F1</b>	Display this Help file
-----------	------------------------

## Macintosh and UNIX Files

### Using Macintosh and UNIX Text Files

TxEEdit will automatically detect the type of text file being loaded when a file is first opened. It does this by looking at the end-of-line character. UNIX files terminate lines using the newline character (ASCII 10), Macintosh files use a single carriage return character (ASCII 13), while Microsoft Windows and MS DOS files use a combination of both (ASCII 13 / ASCII 10).

To save a file using a different file format select the Save As item on the File menu and specify the file type in the combo box at the bottom of the Save File dialog.

If you simply load a file, make editing changes and then save it again the file format originally detected will be used when the file is saved back to disk.

**Note** Text files must contain at least one end of line terminating sequence for TxEEdit to determine the file type. Single line text files that do not contain an end of line character are assumed to be MS DOS text files.

## Loading a Group of Files

### Loading a Group of Files (indirect method)

TxEEdit provides a means of loading a group of files specified through an indirect file list. An indirect file list is simply a text file with filenames listed one per line. Each file name listed will be opened at launch. See the INDIRECT.LST sample file for an example of an indirect file list.

**Syntax** TxEEdit @filename.lst

**Note** Do not put a space after the '@' character, and do not create an indirect list file named '@filename.lst'. The '@' character is a part of the command line, not part of the filename on disk.

**Tip** Indirect file lists can also be opened while TxEEdit is running by selecting the **Open a List** option on the Windows menu.

# AutoLoading Documents

## Automatic Document Loading

TxEEdit can be configured to open a set of up to nine specified configuration files by invoking TxEEdit with the /L command line switch.

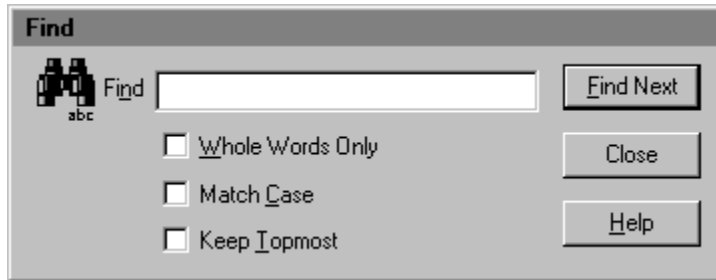
**Syntax** TxEEdit /L

Use the **Windows | SysEdit Files** menu item to open the SysEdit file specification property sheet. This property sheet will allow you to specify the configuration files you would like to open automatically whenever the /L command line switch is invoked.

# Finding Words and Phrases

## Finding Words and Phrases

TxEdit for Windows 95/NT can be used to search for selected words and phrases using the **Edit | Find** menu command or the **Ctrl+F** and **F2** keyboard shortcuts. When the Find command is issued the Find dialog box will be displayed as illustrated below:



Use this window to specify the word or phrase you would like to find using the settings described below.

### Find

Use this entry field to specify the word or phrase to be found.

### Whole Words Only

Check this box to search for complete words only. If this item is not checked partial words matching the search text will be found as well.

### Match Case

Check this box to search for words and phrases that exactly match the search criteria. If this item is not checked capitalization will be ignored when searching for words and phrases.

### Keep Topmost

Check this box to keep the Find dialog box topmost on the desktop. If this item is not checked matching words and phrases will be highlighted and the text editing cursor will be set to the selection.

**Note** If this option is selected the **F3** (Find Again) key will be disabled.

### Find Next

Press this button to begin or continue searching for the specified words and phrases you have chosen.

**Note** If the **Keep Topmost** option is not selected the **F3** key (Find Again) can be used to continue searching for the specified word or phrase.

### Close

Press this button to close the Find dialog box and return to normal editing.

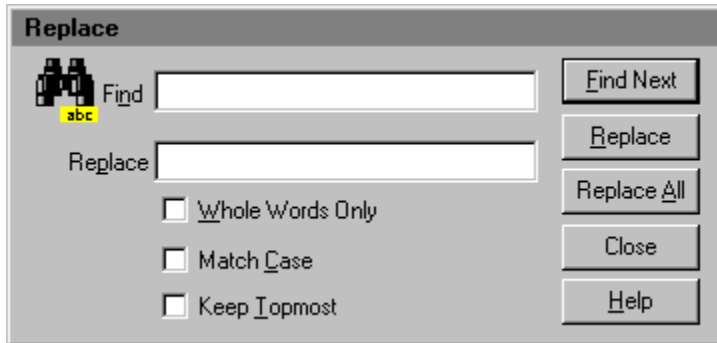
### Help

Press this button to open the TxEdit for Windows 95/NT help file and go directly to the Finding Words and Phrases help topic.

# Replacing Words and Phrases

## Replacing Words and Phrases

TxEdit for Windows 95/NT can be used to replace selected words and phrases using the **Edit | Replace** menu command or the **Ctrl+R** keyboard shortcut. When the Replace command is issued the Replace dialog box will be displayed as illustrated below:



Use this window to specify the word or phrase you would like to replace using the settings described below.

### Find

Use this entry field to specify the word or phrase to be found.

### Replace

Use this entry field to specify the word or phrase to be used as a replacement.

**Note** If this field is left blank instead of replacing matching words and phrases the selected text will be deleted.

### Whole Words Only

Check this box to search for complete words only. If this item is not checked partial words matching the search text will be found as well.

### Match Case

Check this box to search for words and phrases that exactly match the search criteria. If this item is not checked capitalization will be ignored when searching for words and phrases.

### Keep Topmost

Check this box to keep the Find dialog box topmost on the desktop. If this item is not checked matching words and phrases will be highlighted and the text editing cursor will be set to the selection.

**Note** If this option is selected the **F3** (Find Again) key will be disabled.

### Find Next

Press this button to begin or continue searching for the specified words and phrases you have chosen.

**Note** If the **Keep Topmost** option is not selected the **F3** key (Find Again) can be used to continue searching for the specified word or phrase.

### Replace

Press this button to change the currently selected word or phrase with the replacement text.

### Replace All

Press this button to search and replace all matching words and phrases.

### Close

Press this button to close the Replace dialog box and return to normal editing.

### Help

Press this button to open the TxEdit for Windows 95/NT help file and go directly to the Replacing Words and Phrases help topic.

## Comments and Upgrades

### Comments and Suggestions

If you have comments, questions or find any bugs in TxEdit for Windows 95/NT please feel free to contact me via email or on CompuServe.

### Gregory Braun – Software Design

**CompuServe:** 71613,2175  
**Email:** Gregory\_Braun@CompuServe.com  
**Web Site:** <http://www.execpc.com/~sbd>  
**Phone:** 1.414.444.8497

### Web Site

Visit my web site on the Internet to download the latest versions of all of my [software offerings](http://www.execpc.com/~sbd).



### Software Design Web Site

(<http://www.execpc.com/~sbd>)

# Release History

## TxEdit for Windows 95/NT Release History

- v2.0** Original in-house development and testing of MS Windows 95/NT conversion using the Microsoft Win32 SDK.
- v2.1** Added 95/NT splash box for release.
- v2.2** Added option to place the TxEdit program icon in the taskbar notification tray. All dialog box desktop locations are now saved in the INI file.
- v2.3** Added a File Filters dialog box. Fixed several minor bugs, and improved the overall loading speed.
- v2.4** Added an option to select Word-Wrapping when opening and creating new files. Added a right-button popup menu and the **Save Selection As** option.
- v2.5** Fixed several printing bugs.
- v2.6** Increased document size from 512K to 1 meg. Increased the MRU list to 9 items. Fixed missing tabs when printing.
- v2.7** Fixed popup menu Find/Replace bug. Added support for screen colors as defined in the Display Properties dialog. Added default user and company name to the splash box.
- v2.8** Fixed a bug that caused a program crash (GPF) when loading or converting UNIX and Macintosh text files.
- v2.9** Added the **Save Changes when Closing** option. Added facility to open and create new windows using the current MDI window state, i.e. normal or maximized.
- v3.0** Added Tool Menu and Customization dialog. Fixed the bug that prevented exits if the autosave option was specified and a new file was created.
- v3.1** Added MS Windows 95/NT Help file. Fixed printer bug that prevented the last character on a line from being printed properly when word-wrapping was active. Increased document size to 2.5 meg. Moved program settings and options to the MS Windows 95/NT System Registry, eliminating the need for the TXEDIT.INI configuration file. Added MS Windows 95/NT Explorer Setup facilities. Fixed a bug that prevented user-specified file extensions from being properly applied. Fixed a bug in the MRU file menu, items now appear in the order of most recent use. Added OEM / ANSI character conversion facilities.
- v3.2** Added an ASCII Chart window. Fixed a bug in the Save Selection As function that prevented the proper selection of a portion of a document from being saved to disk.
- v3.3** Increased document size to 5 Megabytes per file. Added user-defined text insertion macros.
- v3.4** Added Page Setup dialog to specify custom headers, footers and page margins. Added a command to open and insert files at the current cursor location. Converted the TxEdit Options dialog box to an eight-tab property sheet. Increased the maximum document size to 10 Megabytes.
- v3.5** Fixed a bug that prevented the printing of single ‘&’ characters, and the miscalculation of printer page heights.
- v3.6** Added facilities to customize the toolbar ribbon.
- v3.7** Fixed a bug that prevented the proper repositioning of TxEdit windows on the desktop when the MS Explorer taskbar was located on the left edge or at the top of the display and Auto Hide was active. Added options to the Edit Menu to insert the current system date and time in a document and to sort text selections alphabetically. Added an option to the View Menu to refresh the currently active document from disk. Improved the speed of Find and Replace operations by using native Win32 RichEdit control messages. Added new toolbar buttons for Save All, Close All, Sort, Topmost, Refresh, Timestamp, the ASCII Chart and MS Error Code commands.
- v3.8** Fixed a bug that prevented the proper font size when printing TxEdit documents. Fixed a bug that prevented the Enter key from properly initiating a search from the Find and Replace dialog boxes. Added quotes to custom tool filename arguments that contained spaces.
- v3.9** Fixed a bug that prevented the original file creation and modification timestamps from being retained when backup files were created. TxEdit now behaves like a true Taskbar Tray application when the **Place Icon in the Taskbar Tray** option is selected. Added facilities to assign TxEdit as the replacement for the Microsoft Windows NotePad editor. Several other minor bugs have been fixed.
- v4.0** Added the .REG file type to TxEdit NotePad replacements. The Save As command now appends the default .TXT file extension when only a file name is specified. Right-clicking the mouse on the TxEdit icon in the Taskbar tray will quit



TxEdit and return to the MS Explorer Desktop. Added the [Shareware Registration Wizard](#). The MS Windows Error Code list can now be printed.

- v4.1 Added the Save As menu command for the MS Windows 95/NT Error codes. Fixed several minor bugs.
- v4.2 Restored the older MS Windows 3.0 editing [shortcut keys](#). Fixed several minor bugs.
- v4.3 Added settings to start from a [specified folder](#) when launching TxEdit. Added support for MS Windows 98. Fixed several minor bugs.
- v4.4 Added the **Find Again** (F3) [Edit Menu](#) item. Fixed several minor bugs.
- v4.5 Added a [Recent Files Menu](#). Fixed several minor bugs.
- v4.6 Added a facility to optionally keep the focus on the Find and Replace dialog boxes. Added new buttons to the [toolbar ribbon](#). Added an [option](#) to display the toolbar ribbon using the newer MS Windows 95/98 flat style buttons. Fixed several minor bugs.

**Last Update** November 11th, 1998

**Web Site**

Visit my web site on the Internet to download the latest versions of all of my [software offerings](#).



**[Software Design Web Site](#)**

(<http://www.execpc.com/~sbd>)

# System Registry

## **TxEdit for Windows 95/NT System Registry Key**

TxEdit for Windows 95/NT stores configuration settings in the MS Windows 95/NT System Registry. These settings are updated automatically while TxEdit is running. There is no need to edit these settings manually.

If you insist upon editing these settings, you do so at your own risk. TxEdit automatically updates registry entries when it exits. If you edit these settings make sure TxEdit is not running while you edit them. If TxEdit is currently running your changes will be overwritten when TxEdit exits.

TxEdit for Windows 95/NT stores configuration settings in the following system registry key:

```
HKEY_CURRENT_USER
Software
  Software by Design
    TxEdit for Windows 95/NT
      Section
        Label = Value
```

**Warning** There is no need to edit these settings manually. TxEdit will automatically maintain these settings for you. If you do edit these, you do so at your own risk.

# Removing TxEEdit

## Removing TxEEdit for Windows 95/NT

If you find that TxEEdit for Windows 95/NT does not meet your ASCII text editing needs you can remove it from your computer system by simply deleting the following files from your hard drive.

All of these files will be located in the folder that you originally installed TxEEdit in.

The default location for all TxEEdit for Windows 95/NT program files is the **C:\Program Files\Software by Design** folder. Unless you specified a different folder when you ran SETUP.EXE you will find the TxEEdit files here.

<b>TxEEdit.exe</b>	TxEEdit application program.
<b>TxEEdit.cnt</b>	TxEEdit Help Topics File
<b>TxEEdit.hlp</b>	TxEEdit Help File

If you have opened and used the TxEEdit for Windows 95/NT Help files your system may contain the following two (2) files. These files are created by the standard MS Windows 95/NT Help program WinHlp32.exe. These files may also be safely removed.

<b>TxEEdit.gid</b>	MS Windows Help settings file. This file contains the TxEEdit Help window size and desktop location as well as any bookmarks you may have created.
--------------------	--

<b>TxEEdit.fts</b>	MS Windows Help word database. This file is created when you build a custom word list for TxEEdit Help files. This file is used to search for words and phrases in the TxEEdit Help files.
--------------------	--

TxEEdit for Windows 95/NT does not use any custom DLL files or system drivers. If you delete the files mentioned above from your system's hard drive you will have completely removed TxEEdit from your computer system.

**Note** If you have installed TxEEdit shortcuts on the MS Explorer Start Menu use the **Help | Setup** command to remove the shortcuts you created before you delete the TxEEdit files mentioned above.

# Software Design Web Site

## Software Design

You can download the latest versions of all of my software from my web site on the Internet. I post the latest releases of my software there first. Click your mouse on the link listed below to visit the Software Design web site.



## Software Design Web Site

(<http://www.execpc.com/~sbd>)

## Software Titles

The following software titles are available at my web site on the Internet and can also be found on CompuServe, ExecPC, MSN and ZD Net.

NoteBook for Windows	(NBOOK.ZIP)
NoteBook for Windows 95/NT	(NBOOK32.ZIP)
Reminders for Windows	(REMIND.ZIP)
Reminders for Windows 95/NT	(REMIND32.ZIP)
ToolBar for Windows	(TBAR.ZIP)
ToolBar for Windows 95/NT	(TBAR32.ZIP)
Screen Loupe for Windows	(LOUPE.ZIP)
Screen Loupe for Windows 95/NT	(LOUPE32.ZIP)
Screen Loupe for Macintosh	(LOUPE.SEA)
Audition for Windows 95/NT	(AUDITION.ZIP)
Password Keeper for Windows 95/NT	(PASSKEEP.ZIP)
CardBase for Windows 95/NT	(CARDBASE.ZIP)
Go Postal for Windows 95/NT	(GOPOSTAL.ZIP)
File Editor for Windows	(FXEDIT.ZIP)
File Editor for Windows 95/NT	(FXEDIT32.ZIP)
Crypto for Windows 95/NT	(CRYPTO.ZIP)
Icon Extractor for Windows	(ICONX.ZIP)
Icon Extractor for Windows 95/NT	(ICONX32.ZIP)
TxEit for Windows 95/NT	(TXEDIT.ZIP)
DLL Show for Windows 95	(DLLSHOW.ZIP)
RGB Editor for Windows	(RGB.ZIP)
RGB Editor for Windows 95/NT	(RGB32.ZIP)
Quiz Wizard for Windows 95/NT	(QUIZWIZ.ZIP)
FontShow for Windows 95/NT	(FONTSHOW.ZIP)
Submit It for Windows 95/NT	(SUBMITIT.ZIP)
File Shredder for Windows 95/NT	(SHREDDER.ZIP)
Submit It for Windows 95/NT	(SUBMITIT.ZIP)
Programmer's IDE	(PMAN.ZIP)
Programmer's IDE 95/NT	(PMAN32.ZIP)
Touch for Windows	(WTOUCH.ZIP)
Disk CleanUp for Windows 95/NT	(CLEANUP.ZIP)
BattleStar for Windows	(BSTAR.ZIP)
BattleStar for Windows 95/NT	(BSTAR32.ZIP)
World Radio for Macintosh	(WRADIO.SEA)

**Note** The latest versions of my software programs are always posted on my web site first. Versions found on the other online services may be earlier releases.

# BBS and Internet Operators

## Webmasters

Please upload the original ZIP file intact and title the submission:

"TxEdit for Windows 95/NT v4.6"  
--Author Gregory Braun

## Web Site

Visit my web site on the Internet to download the latest versions of all of my [software offerings](#).



**Software Design Web Site**

(<http://www.execpc.com/~sbd>)

**Note** This site also supports anonymous FTP transfers.

## What is Shareware

### **The concept of "Shareware"...**

Shareware, also known as user supported software and other names, is a concept not understood by everyone. The author of Shareware retains all rights to the software under the copyright laws while still allowing free distribution. This gives the user the chance to freely obtain and try out software to see if it fits their needs. Shareware should not be confused with Public Domain software even though they are often obtained from the same sources.

If you continue to use Shareware after trying it out, you are expected to register your use with the author and pay a registration fee. What you get in return depends on the author, but may include a printed manual, free updates, telephone support, etc. Only by paying for the Shareware you use do you enable the Shareware author to continue to support his software and create new programs. Considering that the Shareware registration fees are almost always far less than the purchase price of comparable commercial software it's obvious that Shareware is a good deal for everyone.

There are real advantages to you in the Shareware system. You get to try out software to make sure it is compatible with your hardware and that it fits your needs before you "buy" it with your registration. The author saves the expense of advertising, packaging and distribution and passes the savings on to you. Plus, most Shareware authors are much more accessible than commercial software sources so that your questions and suggestions are much more likely to be responded to.

*Thank you for your support.*

## Registering TxEdit for Windows 95/NT

### Registering TxEdit

TxEdit for Windows 95/NT is distributed as shareware. You may evaluate it free of charge for 30 days. After 30 days you are required to register it. If after evaluating TxEdit for 30 days you decide not to register it you are required to remove it from your computer.

Registration entitles you to unlimited free updates and telephone support.

You can register TxEdit for Windows 95/NT by mailing the Order Form provided with this software. When you register TxEdit for Windows 95/NT you will receive your registration code by E-Mail, or optionally you may request that your registration code be mailed to you.

You may also purchase TxEdit for Windows 95/NT using your credit card via the Internet or by telephone.

The software you are currently using is a fully functioning program. As a registered user you will however be able to disable the initial splash box that appears when TxEdit for Windows 95/NT is first launched.

To register your copy of TxEdit for Windows 95/NT select the **Help | Register** menu command. The Shareware Registration Wizard will be displayed when this menu command is selected. Use this window to fill in the following entry fields:

#### **User Name**

Enter the user name you originally specified when you ordered TxEdit for Windows 95/NT.

#### **Organization**

Enter the name of your organization as originally specified when you ordered TxEdit for Windows 95/NT. If you did not specify an organization name leave this field blank.

#### **Registration**

Enter the registration code that was provided to you. Enter your registration code exactly as provided. Do not include spaces when entering your registration code.

**Note** The registration code was provided to you when you purchased TxEdit for Windows 95/NT. Refer to the notification letter that was mailed to you or the E-Mail message you received for your personal shareware registration code.

#### **Show Splash Box at Startup**

This box will be initially checked if you have not registered TxEdit for Windows 95/NT. When you successfully register your copy of TxEdit this box will automatically be unchecked for you. If you wish to see the splash box when TxEdit is launched return to this Registration Wizard and check this box.

#### **OK**

Press this button after you have filled out the Shareware Registration Wizard to complete TxEdit for Windows 95/NT shareware registration.

#### **Cancel**

Press this button to close the Shareware Registration Wizard without making any changes.

#### **Help**

Press this button to open the TxEdit Help window and go directly to the Registering TxEdit topic.

# Purchasing Information

## **Purchasing Information**

TxEEdit for Windows 95/NT is distributed as shareware. You may evaluate it free of charge for 30 days. After 30 days you are required to register it. If after evaluating TxEEdit for 30 days you decide not to purchase it you are required to remove it from your computer.

Registration entitles you to unlimited free updates and telephone support.

You can register TxEEdit for Windows 95/NT by mailing the Order Form provided with this software. When you register TxEEdit for Windows 95/NT you will receive your registration code by E-Mail, or optionally you may request that your registration code be mailed to you.

You may also purchase TxEEdit for Windows 95/NT using your credit card via the Internet or by telephone.

The software you are currently using is a fully functioning program. As a registered user you will however be able to disable the initial splash box that appears when TxEEdit for Windows 95/NT is first launched.

## **Single User Licensing**

Individual users can register TxEEdit for Windows 95/NT for \$20.00 dollars. If you would also like a 3 ½" floppy disk sent to you please add an additional \$5.00 dollars. Registration entitles you to unlimited free updates and telephone support. You can always download the latest release of TxEEdit directly from the Software Design web site on the Internet. Print the TxEEdit for Windows 95/NT Order Form and mail it with your check to become a registered user of TxEEdit for Windows 95/NT.

## **Site Licensing**

TxEEdit for Windows 95/NT can also be registered for use at an entire site for \$250.00 dollars. If you would like to install and use TxEEdit on multiple workstations at a single location choose this type of licensing. Registration includes a 3 ½" floppy disk and entitles you to unlimited free updates and telephone support. You can always download the latest release of TxEEdit directly from the Software Design web site on the Internet. Print the TxEEdit for Windows 95/NT Order Form and mail it with your check to become a registered user of TxEEdit for Windows 95/NT.

## **Corporate Licensing**

TxEEdit for Windows 95/NT can also be registered for use at multiple sites for \$1000.00 dollars. If you would like to install and use TxEEdit on multiple workstations at multiple locations choose this type of licensing. Registration includes a 3 ½" floppy disk and entitles you to unlimited free updates and telephone support. You can always download the latest release of TxEEdit directly from the Software Design web site on the Internet. Print the TxEEdit for Windows 95/NT Order Form and mail it with your check to become a registered user of TxEEdit for Windows 95/NT.



# TxEdit for Windows 95/NT Order Form

To print this order form, press the **Print** button above, or select **Print Topic** from the **File** pull-down menu.

Secure on-line credit card orders can be placed from the Software Design web site.

To order by check, send this order form and a check to:

**Gregory Braun**  
**P.O. Box 1307**  
**Milwaukee, WI 53201-1307 U.S.A.**

Payments must be in US dollars drawn on a US bank, or you can send international postal orders in US dollars.

All orders are subject to the License Agreement.

Customer information is considered confidential and will not be shared or distributed to any third parties.

Registered users of TxEdit for Windows 95/NT are entitled to unlimited free program updates.

Single User Copy \_\_\_\_\_ at \$20.00 each = \_\_\_\_\_

Optional 3 1/2" Disk \_\_\_\_\_ at \$5.00 each = \_\_\_\_\_  
Site License \_\_\_\_\_ at \$250.00 each = \_\_\_\_\_

*Includes 3 1/2" Disk*  
Corporate License \_\_\_\_\_ at \$1000.00 each = \_\_\_\_\_

*Includes 3 1/2" Disk*

Wisconsin Residents add 5.5% sales tax: \_\_\_\_\_

**Total Payment:** \_\_\_\_\_

Date \_\_\_\_\_

Name \_\_\_\_\_

Organization \_\_\_\_\_

Shipping Address \_\_\_\_\_  
\_\_\_\_\_

City \_\_\_\_\_

State \_\_\_\_\_

Zip Code \_\_\_\_\_

Country \_\_\_\_\_

Day Phone \_\_\_\_\_

E-Mail Address \_\_\_\_\_

Please send registration code via E-Mail

Comments:



## Credit Card Purchases

### Credit Card Purchases

You may purchase TxEdit for Windows 95/NT by credit card over the telephone or directly from my web site on the Internet.

### On-line Registration

Secure on-line registration using a major credit card is available directly from the Software Design web site. Simply go to the TxEdit for Windows 95/NT program description page and click your mouse on the **RegNet** link. You may register TxEdit for Windows 95/NT using your Master Card, Visa, American Express, Discover or EuroCard. Registration keys will be sent to you via eMail.

### Telephone Registration

You may also purchase TxEdit for Windows 95/NT toll-free by telephone. Please specify TxEdit for Windows 95/NT when ordering.

Toll-Free: **1.800.999.2734**  
International: **1.805.288.1827**  
FAX Line: **1.805.288.1867**

### Web Site

Click your mouse on the underlined link below to purchase TxEdit for Windows 95/NT by credit card.



**Software Design Web Site**

(<http://www.execpc.com/~sbd>)

# License Agreement

## License Agreement

You should carefully read the following terms and conditions before using this software. Unless you have a different license agreement signed by Gregory Braun, your use of this software indicates your acceptance of this license agreement and warranty.

## Registered Version

One registered copy of TxEEdit for Windows 95/NT may either be used by a single person who uses the software personally on one or more computers, or installed on a single workstation used nonsimultaneously by multiple people, but not both.

## Site License

Any number of users at a single location may access the registered version of TxEEdit for Windows 95/NT through a network, provided that you have obtained a site license for the software covering all workstations that will access the software through the network. Any number of users at a single location can install and use the software on one or more computers or workstations.

## Corporate License

Any number of users at any number of locations may access the registered version of TxEEdit for Windows 95/NT through a network, provided that you have obtained a corporate license for the software covering all workstations that will access the software through the network. Any number of users at any number of locations can install and use the software on one or more computers or workstations.

## Software Updates

Registered users of TxEEdit for Windows 95/NT are entitled to unlimited free program updates. Software updates can be downloaded directly from the Software Design web site on the Internet.

## Governing Law

This agreement shall be governed by the laws of the State of Wisconsin.

## Disclaimer of Warranty

THIS SOFTWARE AND THE ACCOMPANYING FILES ARE SOLD "AS IS" AND WITHOUT WARRANTIES AS TO PERFORMANCE OR MERCHANTABILITY OR ANY OTHER WARRANTIES WHETHER EXPRESSED OR IMPLIED. NO WARRANTY OF FITNESS FOR A PARTICULAR PURPOSE IS OFFERED.

Good data processing procedure dictates that any program be thoroughly tested with non-critical data before relying on it. The user must assume the entire risk of using the program. ANY LIABILITY OF THE SELLER WILL BE LIMITED EXCLUSIVELY TO PRODUCT REPLACEMENT OR REFUND OF PURCHASE PRICE.

# Customizing Help

## Customizing Help

You can customize this help file to better suit your needs and uses. The following topics describe the various settings that can be configured. The settings you specify will be saved and used again each time you view this help file.

### Font Size

The size of the font used in this help file can be made larger or smaller by selecting the **Font** item from the **Options** menu above. Select **Small**, **Normal** or **Large** fonts from the popup menu. The font size you select will be saved and used again each time you view this help file.

### Window Size

The size of this Help window and its location on the desktop can be adjusted using the standard Windows resizing and placement methods. The window size and its location on the desktop will be saved and used again each time you view this help file.

### Window Background Color

The background color for this help window can be changed to white if you prefer. To change the background color to white select the **Use System Colors** item from the **Options** menu above. For the color changes to take effect you will have to close and then reopen the Help file. You will be prompted to confirm this action. Your background color selection will be saved and used again each time you view this help file.

### Window Placement

By default this help window positions itself in front of all other open windows. If you would prefer to have it covered up by other active windows select the **Keep Help on Top** item from the **Options** menu and then select **Not on Top** from the popup menu. Your selection will be saved and used again each time you view this help file.



