

Finance overview

- Briefly introduce yourself and your company

Contents

Numbers

Assumptions

Market range

Balance sheet

Branch

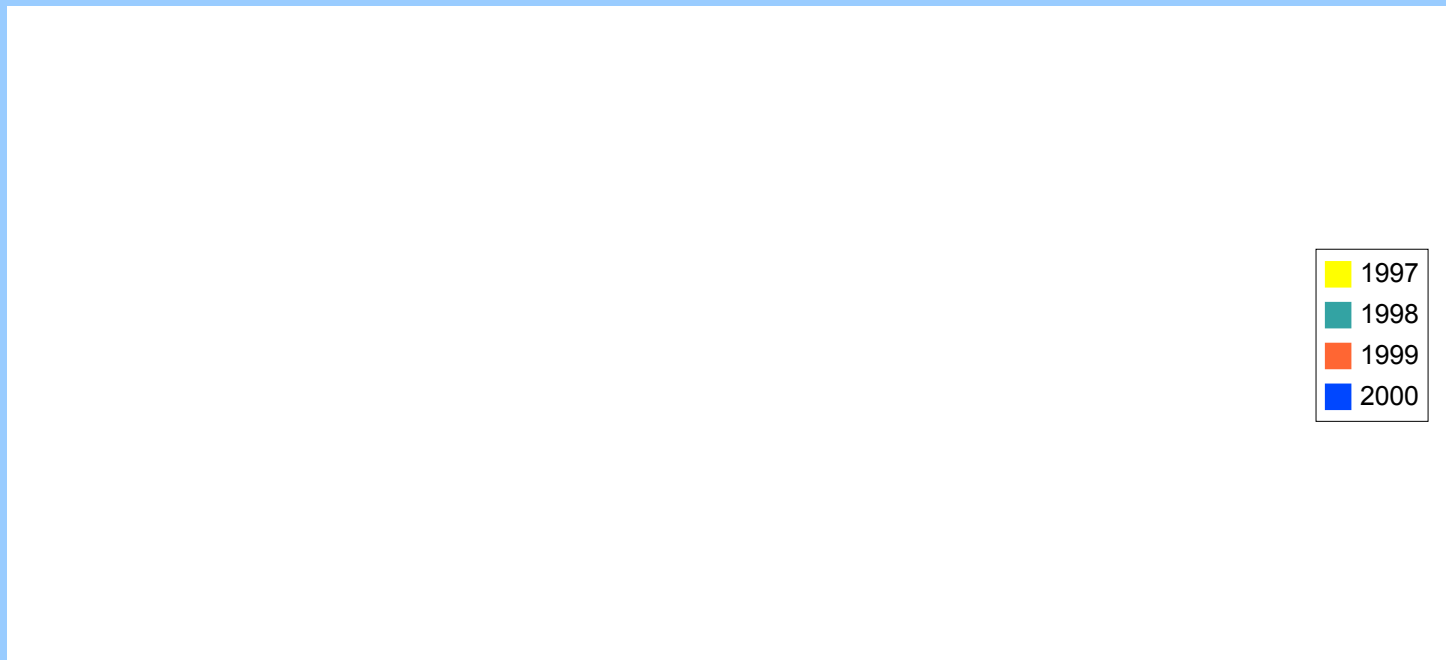
Stock development

Numbers

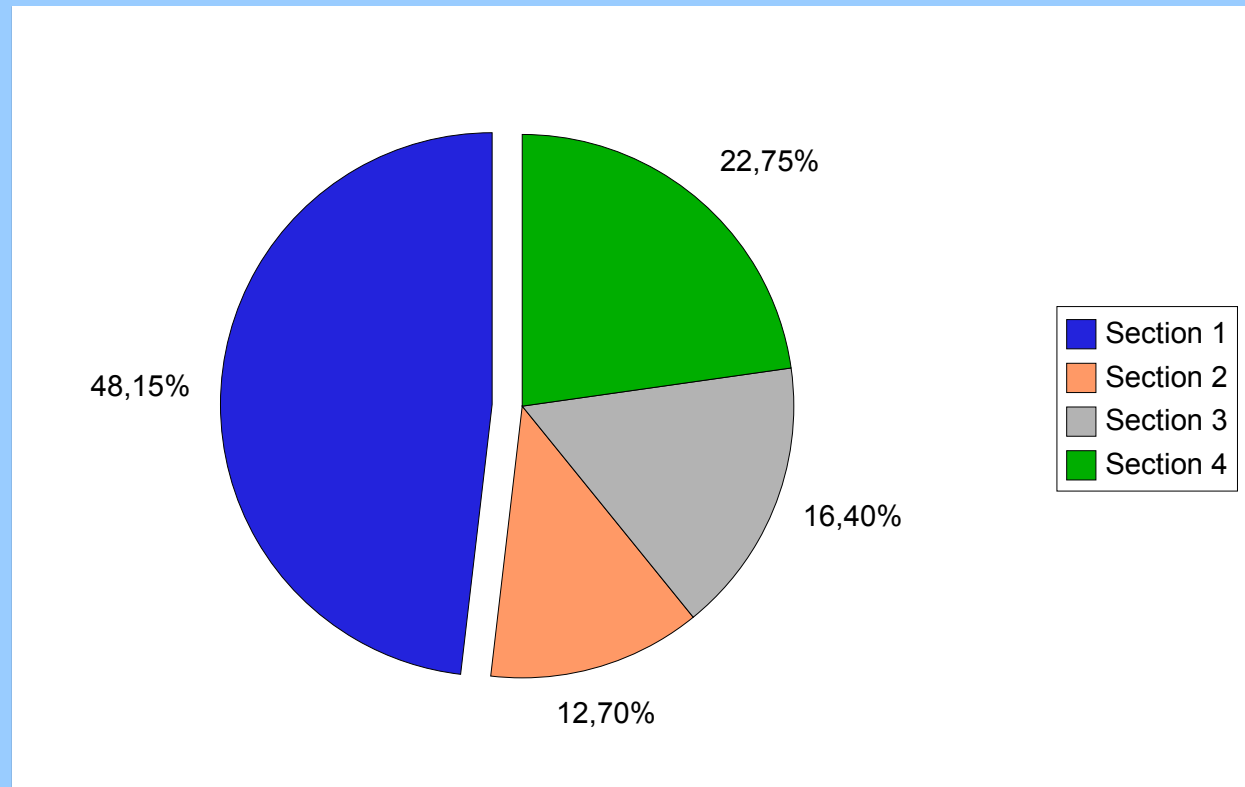
	1999	2000
Turnover	\$1,234,567,900	\$1,234,567,900
Profit	\$123,456,790	\$123,456,790
Profit per Stock	\$0,003.40	\$0,004.50
Investments	\$12,345,678	\$12,345,678
Assets	\$1,234,567,900	\$1,234,567,900

Revenues

Give a short statement of the company revenues



Share of the company's sections

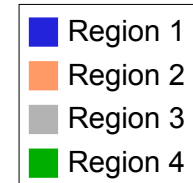


Balance Sheet

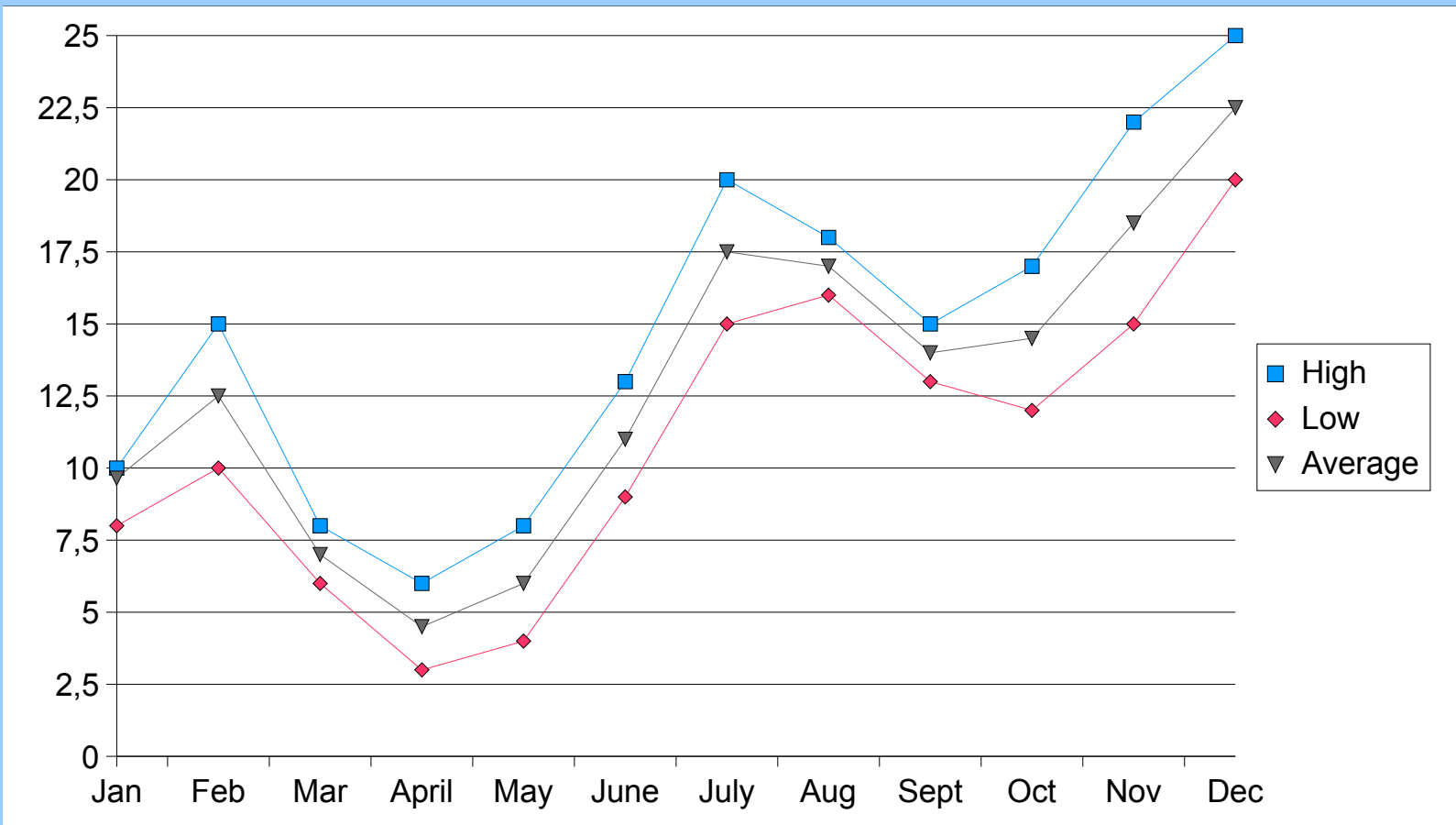
	1999	2000
Assets (All)	\$1,234,567,900	\$1,234,567,900
Capital Assets	\$123,456,790	\$123,456,790
Circulating Capital	\$1,111,111,100	\$1,111,111,100
Liabilities (All)	\$123,456,790	\$123,456,790
Own Capital	\$12,345,678	\$12,345,678
Foreign Capital	\$111,111,110	\$111,111,110

Branches

Briefly describe the share of each branch in the final statement



Stock Development



End

Judge the current situation

Look to the future