



# WinNc 1.3

[Index](#)



## **Welcome at WinNc 1.3**

We created Windows Native Commander to fill in a lack of file-management software, Explorer is a fine tool but has some limitations.

## **Licence and warranty**

The software which accompanies this license (the "Software") is the property of Speets and Hamers SoftWare or its licensors and is protected by copyright law. While we continues to own the Software, you will have certain rights to use the Software after your acceptance of this license. Except as may be modified by a license addendum which accompanies this license, your rights and obligations with respect to the use of this Software are as follows: You may: 1 freely use the freeware version of WinNc on your computer. 2 freely distibute the freeware version of WinNc YOU MAY NOT: 1 sublicense, rent or lease any portion of the Software; 2 reverse engineer, decompile, disassemble, modify, translate, make any attempt to discover the source code of the Software, or create derivative works from the Software

## **Disclaimer of Warranty**

THIS SOFTWARE AND THE ACCOMPANYING FILES ARE SOLD "AS IS" AND WITHOUT WARRANTIES AS TO PERFORMANCE OF MERCHANTABILITY OR ANY OTHER WARRANTIES WHETHER EXPRESSED OR IMPLIED. Because of the various hardware and software environments into which WinNc may be put, NO WARRANTY OF FITNESS FOR A PARTICULAR PURPOSE IS OFFERED.

Good data processing procedure dictates that any program be thoroughly tested with non-critical data before relying on it. The user must assume the entire risk of using the program. ANY LIABILITY OF THE SELLER WILL BE LIMITED EXCLUSIVELY TO PRODUCT REPLACEMENT.

## **WinNc Index**

[WinNc Help Index.](#)



# **WinNc 1.3 Help Index**

[Index](#)

[WinNc 1.3 32-Bit Shell](#)

[System Requirements](#)

[Panels](#)

[Networking](#)

[Menus](#)

[Compression tools](#)

[Toolbar Configuration](#)

[Panel Operations](#)

[Select Files](#)

[WinNc Tips](#)



# System Requirements

[Index](#)

## **Software Requirements**

WinNc require some additional applications to work properly:

- **You need a good all purpose fileviewer. (we suggest QuickView plus)**
- **To edit properly you must register all extensions properly to their application.**
- **Help Contents**

## **Hardware Requirements**

To work with WinNc you must match the next requirements:

- **Standard Requirements for Windows 95**
- **Harddisk at drive C (otherwise WinNc will fail)**

## **Windows version**

You need a true 32-bit operating system. Win32s on windows 3.1 will not work. we suggest you use the following OS:

- **Windows NT 4.0 or higher.**
- **Windows 95 (4.0) or Higher.**

## **System suggestions**

We programmed WinNc in Windows 95 with Plus installed at 800x600x65536 on a Pentium 133 with 32 MB system Ram. We tested WinNc on the next configurations:

- **486DX2/66-8MB 486DX4/120-16MB**

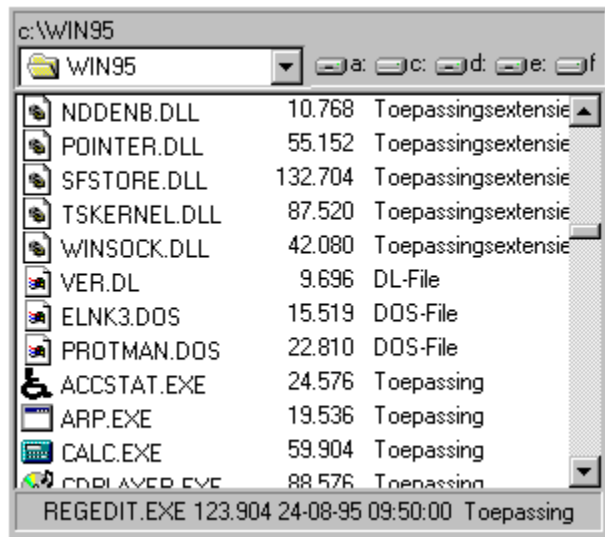
It works fine as you turn iconextraction off.

- **Pentium 120/133 with 32/48 MB, 1024x768x65536**

It works 100% smooth even with Full Iconextraction.

# Panels

## Index



WinNc works with two panels. These are to operate shell functions like Copy and Move. The principle is that you need for those operations a From and a To.

- **Copy FormFile ToFile**

You can use the panels to seek your source and destination directory, select some files and copy them from panel to panel.

## **Sorting Panels**

You can sort the panels out by name, extension, Date and size. To do so you select menuoption Left or Right to select the sort method for the panel.

## **Select Drive**

there are 5 ways to select a drive:

- **By selecting a drive from the combobox.**
- **By clicking on a drive icon below the combobox.**
- **By pressing Alt-F1 or Alt-F2 (The Combobox will be hilighted)**
- **By selecting the Left/Rigth menuoption Drive (Same as F1 or F2)**
- **By Entering drivename on the command line.**

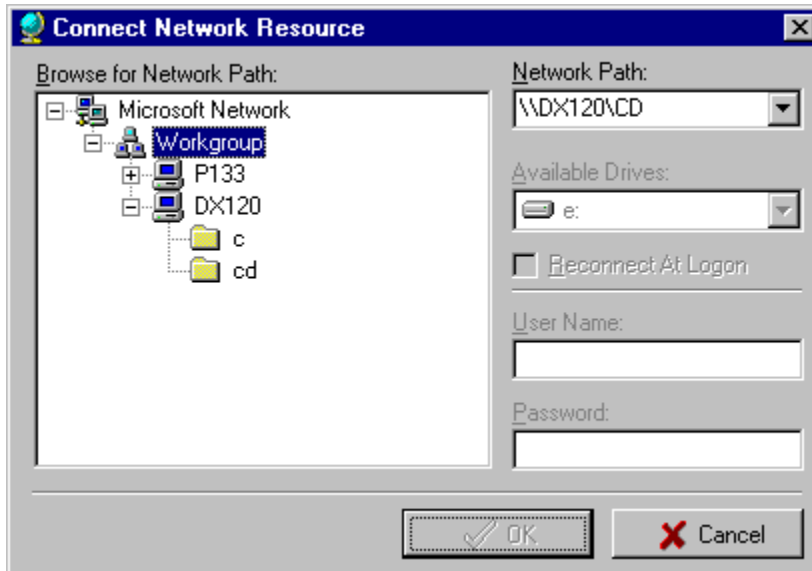


# NetWorking

## [Index](#)

Winnc is created to handle networkdrives. You can add and delete a networkdrive and enter the networkneighborhood.

## **Managing Network resources with the toolbar**



There are tree buttons assigned for the network

- **Add Network connection: 5th Button form left**
- **Delete Networkdrive: 6th Button form left.**
- **Entering networkneighborhood (7th Button form left.)**

The last Button is an Lnk-file. this button belongs to the user buttons so you are able to delete it.

## **Reallocation Networkdrives**

This is an menuoption in the 'Command' Menu. It will reallocate all drives including new networkconnections created outside WinNC.



# menu's

[Index](#)

## ***the Speedmenu***

There are 2 types of menus. The first is the normal pull-down menu and the other menu are the buttons below the panels.

**These speedbuttons are connected to :**

- **F1:Properties**
- **F2:Compression Tools**
- **F3:View**
- **F4:Edit**
- **F5:Copy**
- **F6:Move**
- **F7:MkDir**
- **F8: Delete**
- **F10:Quit.**

[Left/Right menu](#)

[Files Menu](#)

[Command Menu](#)

[Options menu](#)



# Left-Right Menu

[Index](#)

## **Full/Brief/Tree**

If you check full (Default) all file-information will be shown, If you check Brief you get three file columns  
You can use Tree to view the disks directory structure

## **Sort Types**

The sort types refer to panel sorting method. there are 5 types of sort:

- **Name**
- **Extention**
- **Date/Time**
- **Size**
- **Unsorted.**

## **Drive**

Select Drive for the panel.

## **Filter**

With this option you can filter files.



# FileMenu

[Index](#)

## Contents of files menu

The files menu exists out of all fileoperations which can be done in WinNc. These are the same as the Speedmenu below the panels. Except for one:File properties

## File Properties

**File Properties**

Enter attributes:

Attributes

System       Read Only

Hidden       Achive

Date & Time

Date

Time

Include Subdirs

Set Date & Time

With fileproperties you can set the attributes and date/time of one or more file's to set all properties for a Subdirectory you need to check 'Include Subdirs'. All selected files and all files in selected subdirectory's will get these attributes. You can leave attributes as the are by checking the attribute at gray. If more than one file is selected there are three possibilities:

- **Unchecked attribute:**  
All matching attributes will Unset.
- **Checked Attribute:**  
All matching attributes will Set.
- **Grayed Attribute:**  
Noting done by matching attributes.





# Command Menu

[Index](#)

## **Contents of options menu**

The command menu exists out of the following options:

- **Compare Directory's**
- **Reread Directory**
- **System information**
- **Find file**
- **Tree view**
- **Control Panel**
- **Reallocate networkdrives**
- **DiskCopy**
- **Format Disk**
- **Compression tools.**
- **Decompression.**
- **Split File**
- **Merge File**

### **Compare Directory's**

The two panels will be compared, all files which differs form both panels will be selected.

### **Reread Directory**

The directory of a panel will be reread. this is usefull after a not WinNc command or after a Unpack command.

### **System Information**

WinNc gives a report about your system (CPU,Memory,Video adapter, Operating system and haddisks.

### **FindFile**

Coupling to Explorers Findfile, For help see explorer.

### **Tree view**

A tree-structured view of the disk.

### **Control Panel**

Windows controlpanel will be executed.

### **Reallocate Networkdrives**

All new networkdrives will be added to WinNc and all removed networkdrives will be removed.

### **Compression Tools**

[See Compression tools](#)



# Options Menu

[Index](#)

## **Contents of options menu.**

With the options menu you can modify WinNc to your style.

- **panel font**
- **Show Statusbar**
- **Printers**
- **Icon Options**
- **Panel Width**
- **Panel options**

### **Panel Font**

With this option you can change the Panel font.

### **Show Statusbar**

The status bar gives information about your drives. The statusbar's height is the same as the taskbar, so if you use option 'autohide Taskbar' the taskbar will not overlap the speedbuttons. If you hide the statusbar the taskbar can overlap but you save screenspace.

### **Icon Options**

there are four iconmodes.

#### **Internal icons**

All icons will be displayed from the memory (Fastest)

#### **Default icons**

no icons will be extracted from the directory's and files. Only WinNc's internal and pre-extracted icons are used. (Very fast)

#### **Extract exe,lnk,ico**

Only the Exe,lnk and Icon files are extracted. For all other files the internal icons and pre-extracted icons are used. (Rather fast).

#### **Extract All**

All icons are extracted from the files. this is the slowest option.(not recommended for a 486 or a low end Pentium).

### **Panel width**

You can alter the panel's filenamewidth. for a more specific setup you can alter the WinNC.Ini file.

### **Panel Option**

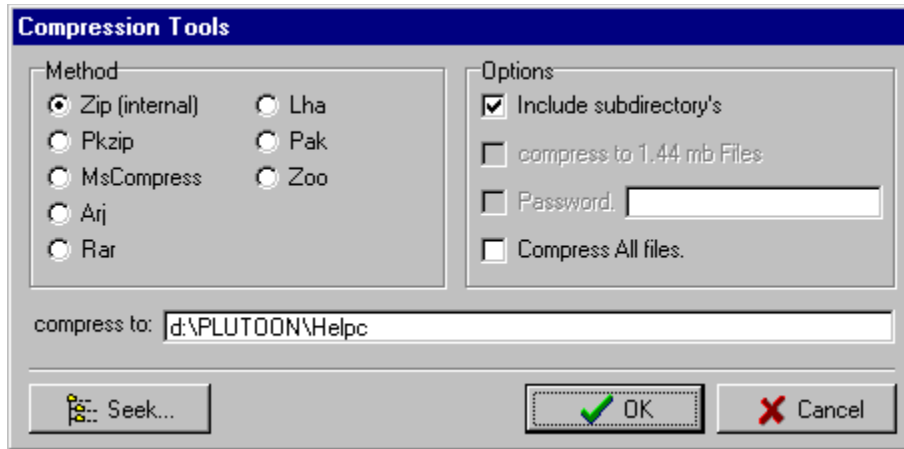
With this option you can choose whether you want to show the file's attributes or the file's specification.



# Compression

[Index](#)

## ***FileCompressing.***



## ***Methods purposes and limitations***

Internal Zip is the fastest compression tool. It has 2 limitations:

- **It cannot compress to 1.44 mb (Disk format) files**
- **It cannot compress encrypted**

## ***Searching for Compression utils***

The button 'Search' will search your harddrives for compression utilities for use with winnc.

## ***Compression and Decompression***

[Compressing a set](#)

[Decompressing.](#)



## Compress Set

### [Index](#)

If you wish to compress a view files without compressing all files in the directory you must select the files you want to compress. Be sure your cursor is highlighted at the panel with the selected files. otherwise the other panel will be compressed. Uncheck option 'compress all files' and press okee.

### **Warning:**

Warning:Pkzip cannot compress many selected files. (some memoryproblems of Pkzip.) If this occure use internal zip' instead.

if you select a directory be sure option 'Include subdirectorys' is checked.

### **Password**

If you want to use an password. Check option Password and type the password next to the option. Please be sure that you remember the password otherwise you cannot extract the archivefile.



# Decompress Files

[Index](#)

## ***How to enter the decompress tool***

Its quite simple to enter this tool. You put the cursorbar at the achive file (At least the first achive file) and press enter.

## ***Handeling PkzipFiles.***

If the PkZip file contains long filenames you'd rather use Internal, because it can handle long filenames. If you insist to use Pkzip the long filenames will be lost.

## ***Password***

If the achivefile contains a password be sure you checked option password with the righth password filled in. if you don't enter a password Pkzip or Arj cannot unpack.

# **User Toolbar**

[Index](#)

Configuring the user toolbar



## **Adding items to the user toolbar.**

To Add items to the usertoolbar You have to drag an executable, document or LNK. file form a panel and drop it to the user toolbar. WinNC will create a button.

## **Removing items from the usertoolbar.**

To remove items you have to rightclick on the button. A popupmenu will show. Select the edit-mode to remove. Drag the button from the toolbar and drop it on a panel. WinNc removes the button.

## **Moving Buttons.**

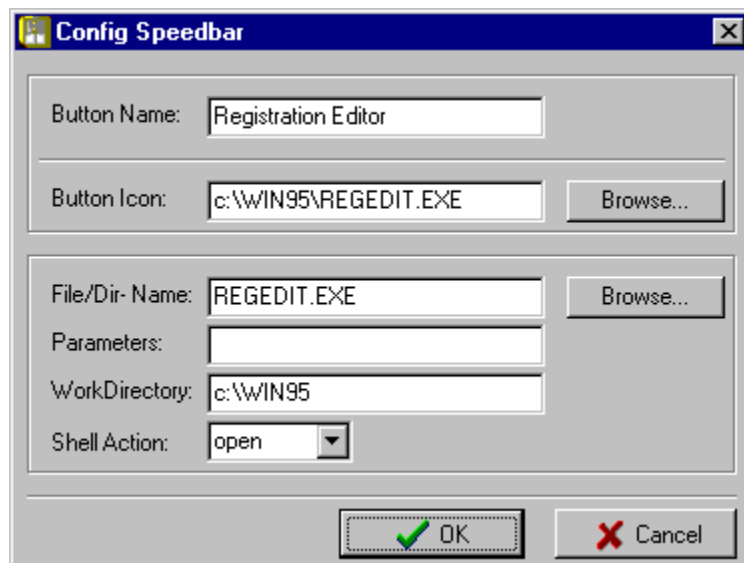
To move items you have to rightclick on the button. A popupmenu will show. Select the edit-mode. Drag the button from the toolbar and drop it at an other place on the toolbar. WinNc moves the button to the new location. If you drop the item at an other button, the other button will be deleted first.

## **Customizing the button.**

The buttoninformation is saved in WinNC.Ini. You can access this file by using notepad.

```
[Button1]
Command=WINWORD.EXE
Parameter=
Directory=c:Files
Action=open
Text=Microsoft Word 7.0
```

## **Using the Config Option**



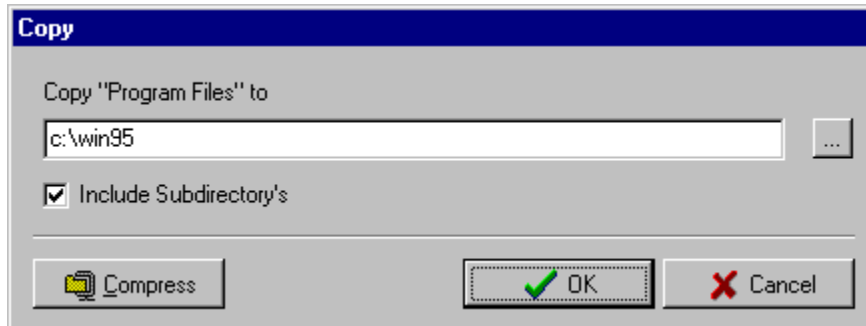
If you right-click on a button a menu will appear, Choose 'Config Mode'. When you click on a button a window will appear. With this option you customize a button, for example if you want to change the Button's name or the button's Icon.



## Panel Operations

### [Index](#)

Almost all panel operations (Copy, Move, Delete, MakeDir ect) uses the following window:



### **Copy and Move**

To copy or move you can press F5 or F6. The file on which the cursor stands on will be displayed in this window. The directory of the other panel will be Displayed in the Edit Box. This is the directory the file will be copied to. You can alter this directory or press on the browsebutton (...) to copy to an other directory and or drive. You can also choose an other computer if you are using a network.

### **Copying a set of files**

To copy a set of files you need to select them You can select by right-clicking on a file or pressing 'Insert' (See Selecting Files)

### **Compress**

On the copy and move windows a button 'Compress' is available. With this function you can compress your Selected Files.



# Selecting Files

## [Index](#)

There are many ways to select files. We will handle the most used.

## **Selecting with the Mouse**

if you Right-Click with the mouse on a File the file will be selected (Blue) or Unselected (Black)

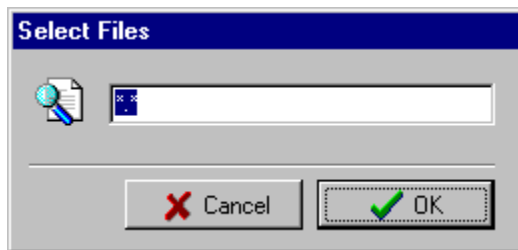
## **Selecting With Keyboard**

'Insert' A single file will be selected or unselected.

'Num+' A dialog will appear, You can enter what you want to select.

'Num-" A dialog will appear, You can enter what you want to deselect.

'Num-\*' The selectionset will be inverted.







## ***Index***

[WinNc 1.3 32-Bit Shell](#)

[WinNc Contents](#)

[System Requirements](#)

[Panels](#)

[Networking in WinNc](#)

[WinNc Menus](#)

[Compression Tools](#)

[Toolbar Configuration](#)

[Panel Operations](#)

[How to Select Files](#)

[WinNc Tips](#)



# WinNc Tips

[Index](#)

## **Drag and Drop**

WinNc can handle features like drag and drop. For example: If you want to copy a File or directory from your DeskTop or from the explorer folder interface. you can drag them onto a panel in WinNc. If you have opened a compressed file you can add the files you drag to the archive.

## **Command Line**

Below the panels there is a Command line. This can be compared with the MS-Dos(c) command prompt. there are some extra's comparing to the command prompt:

```
c:\Program Files\Accessories> _
```

You can drag a file from a panel to the commandline to add the filename to your command. This can also be done with [Ctrl-Enter]

You can return your last command with [Ctrl-E]

## **Copying a file to another filename**

WinNc puts the file you copy or move into the clipboard this can be very handy.

If you need to copy a filename to an other name or extention you van simply paste the file you copy, example:

you want to copy 'autoexec.bat' to 'autoexec.bak'

- **select Autoexec.bat**
- **Press F5 or drag to other panel**
- **use paste (this can be performed by [Shift-Ins] or [Ctrl-V])**

## **Seeking files**

you can quickseek files by pressing [Ctrl+Alt]. You can type the filename you seek in the popup dialog.

## **Tips for low end systems**

If you are using a computer slower than a 486DX2/66 you can speed up WinNc by:

- **Using 'Internal Icons' in icon options.**
- **Set paneloption Size-Filetype**
- **Panel Width to 'All Characters'**

when WinNc start, it creates or reads a database from the disk with all registered filetypes (regprop.dat). it also contains information about the icons. If WinNc encounters a registered filetype for the first time, it will extract the icon and keep it in memory. if it encounters the filetype again it paints the icon directly from the memory.

For registered icons it will gain speed. this trick will not work for types like \*.exe, \*.lnk etc. because they are allways.

All the extractionlevels except 'Use internal' will use this trick for extracting registered types.



