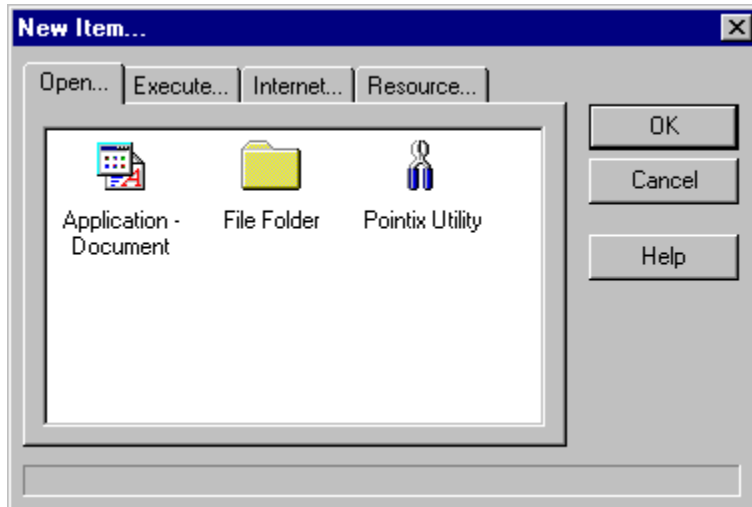





New Item Type Selector

Only for Pop-Mouse Commercial Version






This dialog allows you to select the type of the item about to be created. Pop-Mouse command-types are organized in four categories:




1) Open Commands:

Icon	Name	Action
	Application-Document	Open an application or document.
	File Folder	Open a folder in an Explorer window
	Pop-Mouse Utility	Activate a Pop-Mouse Utility



2) Executable Commands:

Icon	Name	Action
	Keyboard Sequence	Simulate a sequence of keystrokes (macro)
	Stamp	Paste a text clip on the active document
	Generic Command	Execute an internal Windows command (e.g., minimize)

3) Internet Commands:

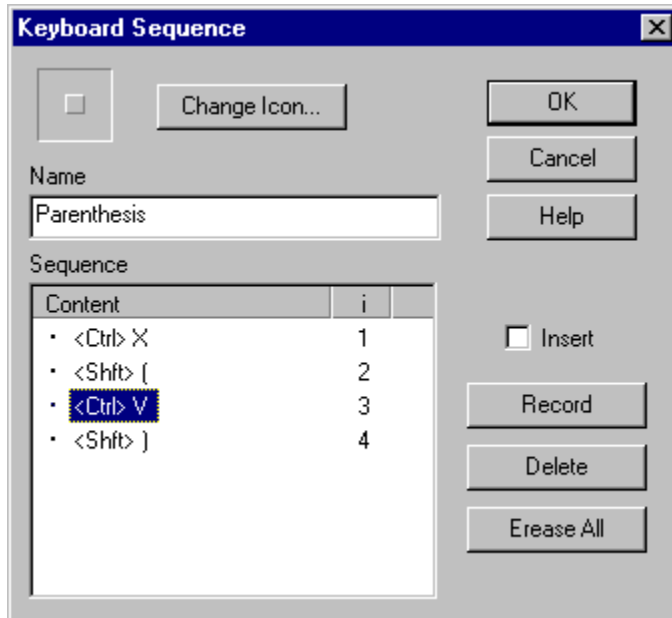
Icon	Name	Action
	WWW Page	Open your default browser at the specified URL
	E-Mail	Open your default e-mail application and aims it at the specified e-mail address
	Telnet	Open a Telnet session to the specified host

4) Resource Commands:

Icon	Name	Action
	Floatbar	Pop-Up the specified Pop-Mouse floatbar
	Menu	Pop-Up (or displays alongside) the specified Pop-Mouse floatbar

Keyboard Sequence Command Editor

Only for Pop-Mouse Commercial Version



A **keyboard sequence** is a series of keystrokes performed automatically when you execute the command. You can use k-sequences to:

- Create customized pop-up menus for your applications
- Automate simple operations that requires a series of tedious operations
- Enter repetitive data (e.g., programming syntax structures)
- Automate any specific task that can be performed with a keyboard

Pop-Mouse describes k-sequences internally as a series of steps. Each step is represented a key other than "Control", "Shift" and "Alt" plus any combination of the "Control", "Shift" and "Alt" keys.

Recording A new Keyboard Sequence

To record a new sequence, follow the next steps:

- 1) Press "Record" .
- 2) Enter the key sequence. Be careful to press and release each key accurately).
- 3) Press "Record" again when you have finished entering the sequence.
- 4) Type the name of the sequence and press "Ok" to let Pop-Mouse store the sequence.

You can define a name and a specific icon to identify the sequence easily.

Editing a Sequence

To edit a sequence, follow the next steps:

- 1) Select the step you wish to modify
- 2) Press "Record"
- 3) Enter the new keystroke
- 4) Press "Record" again

Keep entering the sequence if you want to modify more than one step.

Inserting Steps

By default, Sequence Editor will *replace* or *add* steps as you enter them. If you want to *insert* steps, check the box labeled "Insert". It works similar to a text editor in "insert mode".

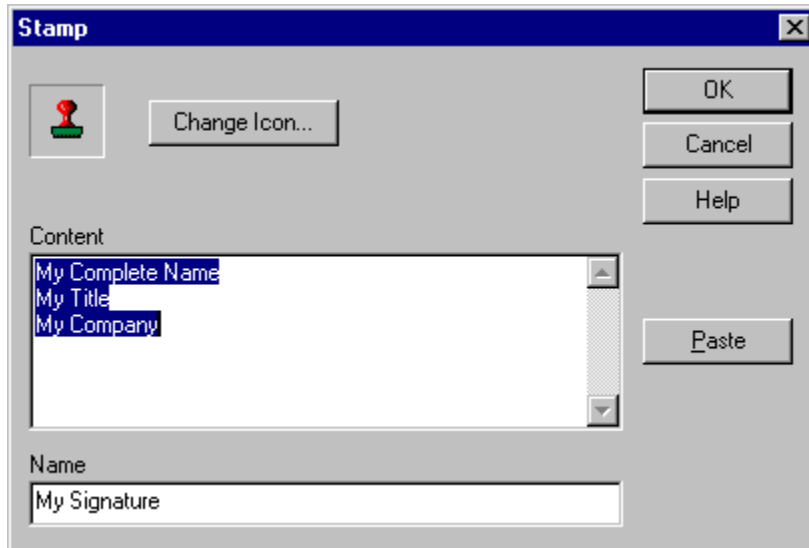
Deleting Steps

To delete a step, just select the step and press "Delete". You can delete one step at a time. If you want to erase the whole sequence, click "Erase All".

Note: Capacity of Keyboard Sequences is limited to 48 steps.

Stamp Command Editor

Only for Pop-Mouse Commercial Version



A **stamp** is a text clip that you use frequently (just as the real-life object). The stamp is pasted on the current document (if any) when you execute the command. You can use stamps to:

- Include your signature at the end of a letter or e-mail.
- Include frequently used phrases in your documents.
- Include frequently used programming structures in your source files.
- Store short paragraphs (e.g., product descriptions) that you need every once in a while.
- Store any piece of text that you may need to paste somewhere else with some frequency.

Creating a New Stamp

To create a new stamp simply type its content on the editor or paste it from the clipboard. You can define a name and a specific icon to identify the stamp easily.

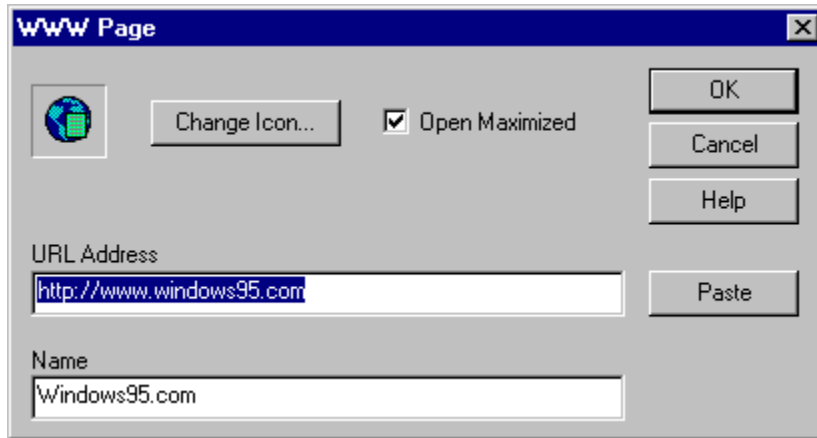
Editing a Stamp

You can edit the stamp freely using the basic editing techniques used in any simple text editor.

Note: Stamps can store up to 250 characters.

WWW-Page Command Editor

Only for Pop-Mouse Commercial Version



A **WWW-Page** command opens your default browser at a specified URL address. It lets you open all your frequently visited www pages without having to launch your browser and type the address or search for a bookmark.

Creating a WWW-Page Command

To create a new WWW-Page command just type or paste the URL address in the box labeled "URL Address". You don't need to specify the prefix "http://".

You can define a name and a specific icon to identify the WWW-Page command easily.

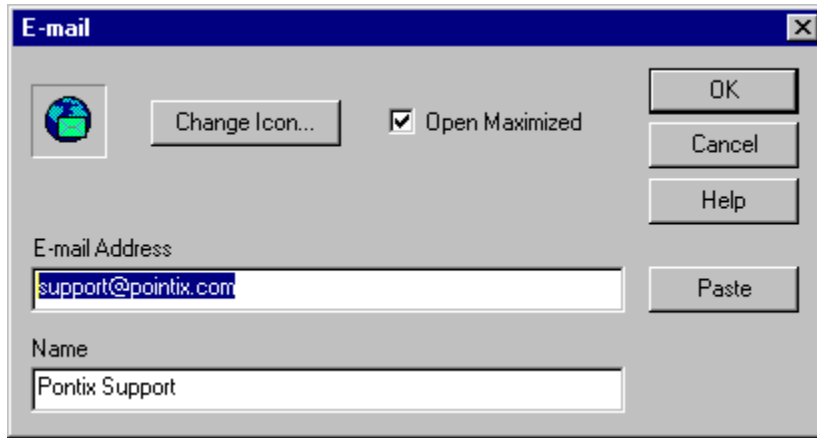
Editing a WWW-Page Command

You can edit the URL address using the basic editing techniques used in any simple text editor.

Note: The URL address capacity is limited to 250 characters.

Mail-To Command Editor

Only for Pop-Mouse Commercial Version



A **Mail-To** command opens your default mail client application ready to send e-mail to a specified address. It lets you e-mail all your most active e-mail contacts without having to launch your e-mail application and type the address or search for an address-book entry.

Creating a Mail-To Command

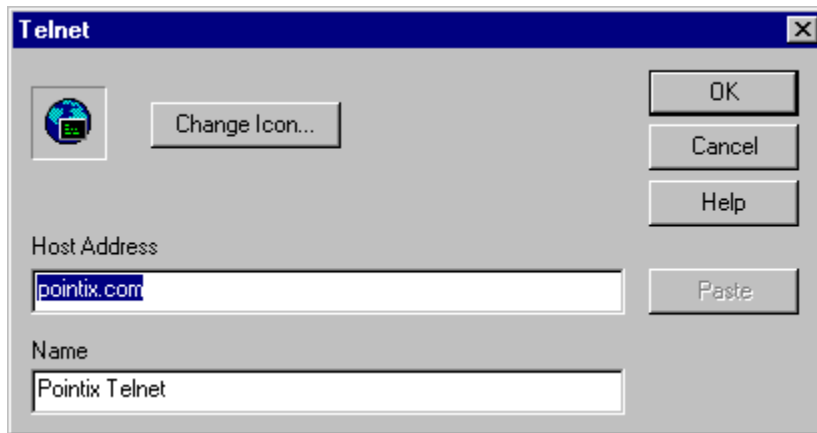
To create a new Mail-To command just type or paste the address of the target e-mail's account in the box labeled "E-mail Address" . You don't need to specify any prefix.

You can also define a name and a specific icon to identify the Mail-To command easily.

Editing an Mail-To Command

You can edit the e-mail's account address using the basic editing techniques used in any simple text editor.

Telnet Command Editor



A **Telnet** command opens your default Telnet client application aimed at a specified address. It lets you telnet your frequently visited hosts without having to launch your telnet application and type the address or search for an address-book entry.

Creating a Telnet Command

To create a new Telnet command just type or paste the host's address in the box labeled "Host Address" . You don't need to specify any prefix.

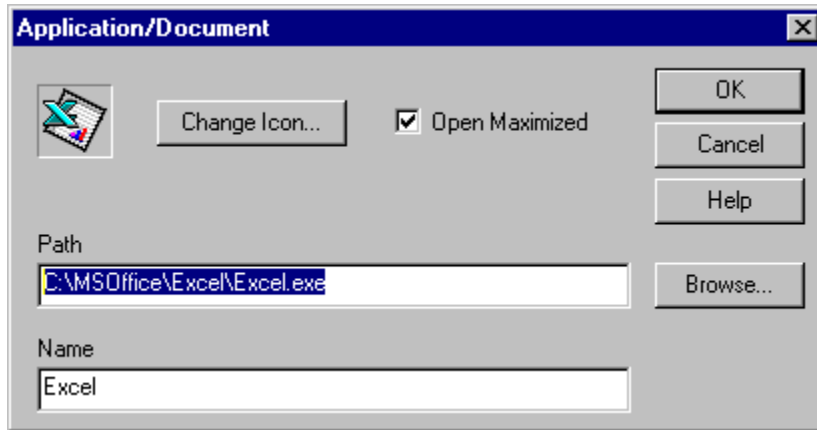
You can define a name and a specific icon to identify the telnet command easily.

Editing a Telnet Command

You can edit the host's address using the basic editing techniques used in any simple text editor.

Application - Document Command Editor

Only for Pop-Mouse Commercial Version



An **Application - Document** command opens an application or document located in a specified path. It lets you easily launch your frequently used applications and documents.

Creating an Application - Document Command

To create a new Application - Document command just click on "Browse..." and select the application's executable file or document's file. You can also type or paste the file's path directly into the box labeled "Path" if you prefer.

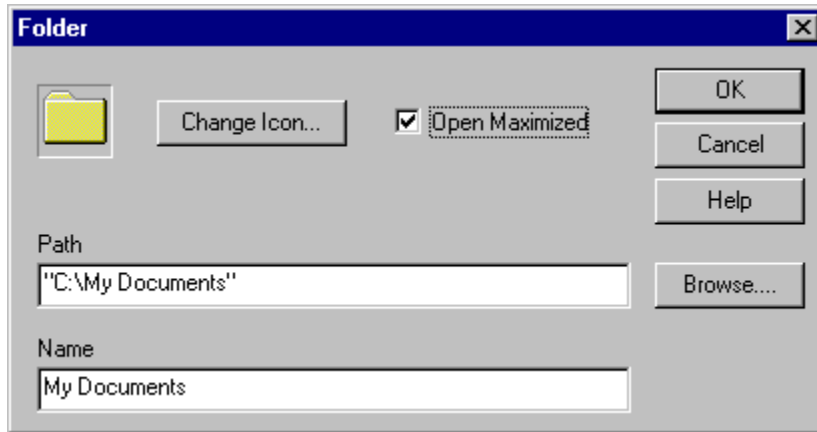
You can define a name and a specific icon to identify the Application - Document command easily.

Editing an Application - Document Command

You can click "Browse..." to set a new path or you can edit the path using the basic editing techniques used in any simple text editor.

File Folder Command Editor

Only for Pop-Mouse Commercial Version



A **file folder** command opens a folder located in a specified path when you execute the command. It lets you easily open your frequently accessed folders for exploring.

Creating a File Folder Command

To create a new folder command just click on "Browse..." and select the folder's path. You can also type or paste the folder's path directly into the box labeled "Path" if you prefer.

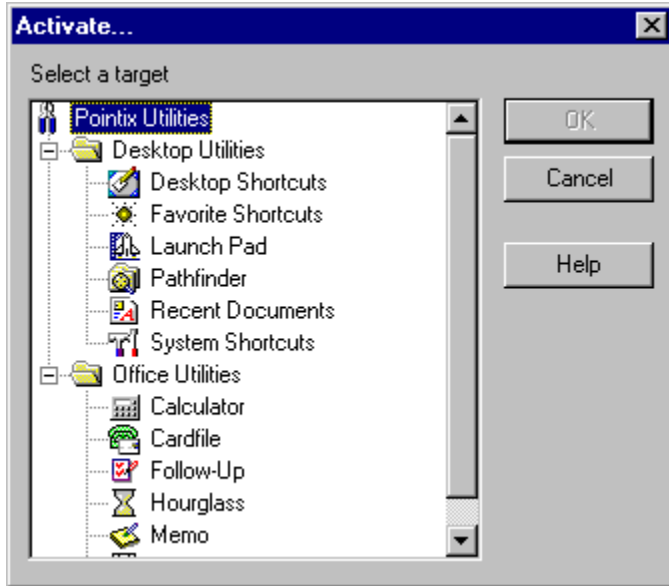
You can define a name and a specific icon to identify the folder command easily.

Editing a File Folder Command

You can click "Browse..." to set a new path or you can edit the path using the basic editing techniques used in any simple text editor.










Pop-Mouse Utility Command Selector

Only for Pop-Mouse Commercial Version



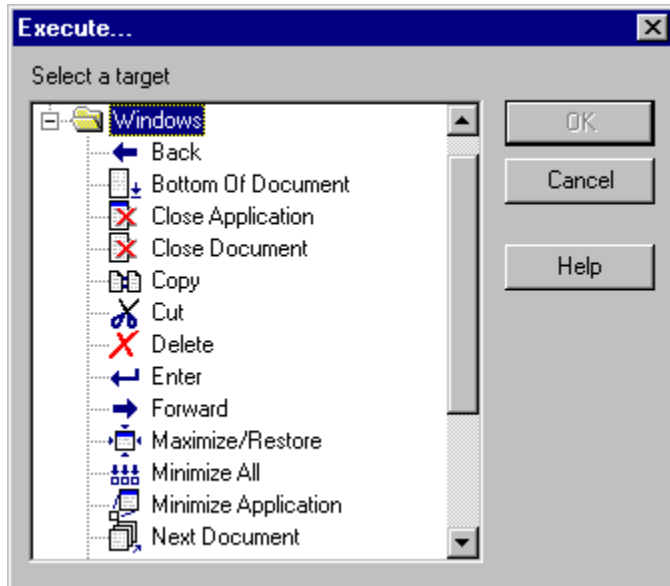
Pop-Mouse includes a set of utilities that run in pop-up windows and let you perform a variety of functions with minimum effort. Use this dialog to create an item linked to one of these utilities.

Among the Pop-Mouse utilities included in version 3.0 you will find:

	Pathfinder	Explorer-like utility for browsing files and folders
	Favorite Shortcuts	Explorer-like folder-view holding shortcuts to your most frequently accessed objects
	System Shortcuts	Idem, for system objects
	Scheduler	Personal scheduling and alarm utility
	Follow - Up	Personal to-do-list utility
	Memo	Floating multi-notepad utility
	Card File	Card file utility
	Calculator	Programmable commercial calculator
	Hourglass	Useful alarm utility for short-range reminders

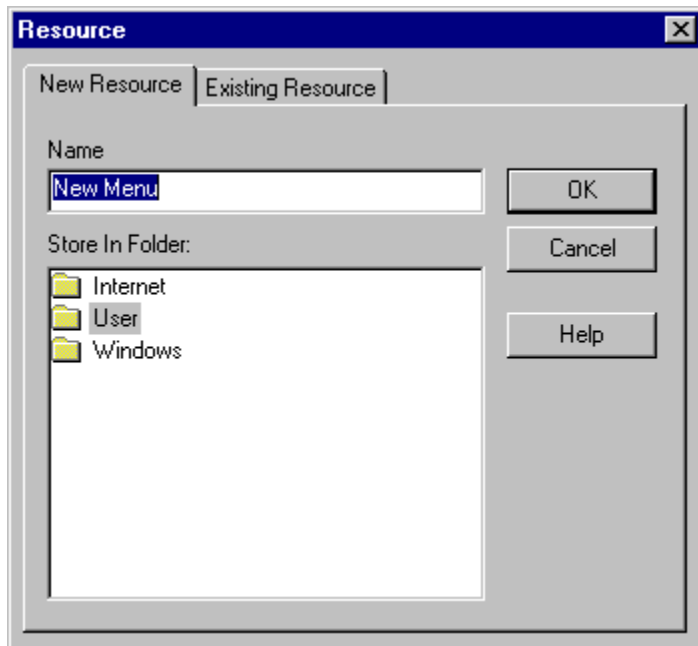
Generic Command Selector

Only for Pop-Mouse Commercial Version



A generic command is a Windows command or an internal Pop-Mouse command related to window management. Pop-Mouse 3.0 includes a set of the most used generic commands. Generic commands are not editable.

Resource Link Command Selector



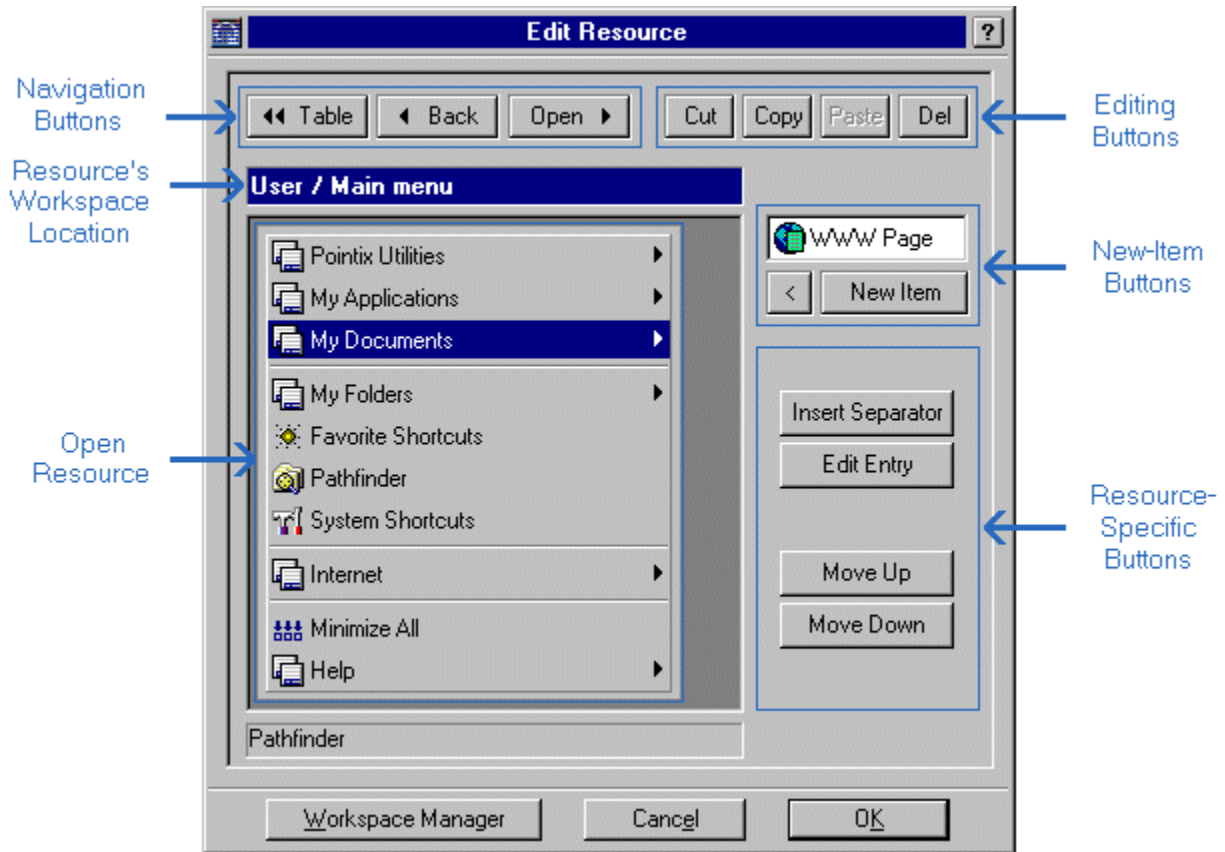
Resource items can be commands of any type, including a link to another resource. When this type of command is executed, the linked resource pops-up on the screen either replacing the calling resource (if it is a floatbar) or at one side (if it is a menu). This feature lets you create your own **floating shell** from which you can access all your most frequently used objects with minimum effort.

When creating a link to another resource, you can specify an existing resource or a new one. When you create a link to a new resource, Resource Editor creates the new resource and builds a link to it in the current resource. You must specify a folder in which to store the new resource.

Note: When you delete a link to a resource, the resource is not deleted from the workspace. To delete the resource permanently, you must use Workspace Manager.

Resource Editor

Only for Pop-Mouse Commercial Version



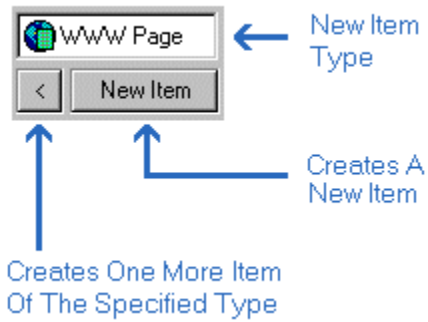
The Resource Editor allows you to modify and create tables, menus and floatbars (resources). Once a resource is open in the editor's window, you can edit the content of all items and add new ones.

Navigation Buttons



Use the navigation buttons to "move" the editor over linked resources. Double clicking on an item has the same result as clicking "Open", when it is enabled.

New Item Buttons



Use the navigation buttons to create new items on the current resource. The items can be commands of any type, including links to other resources. When creating a link to another resource, you can specify an existing resource or a new one. When you create a link to a new resource, Resource Editor creates the new resource and builds a link to it on the current resource. To open the new resource use the navigation buttons.

Note: When you delete a link to a resource, the resource is not deleted from the workspace. To delete the resource permanently, you must use Workspace Manager.

Workspace Manager

Only for Pop-Mouse Commercial Version

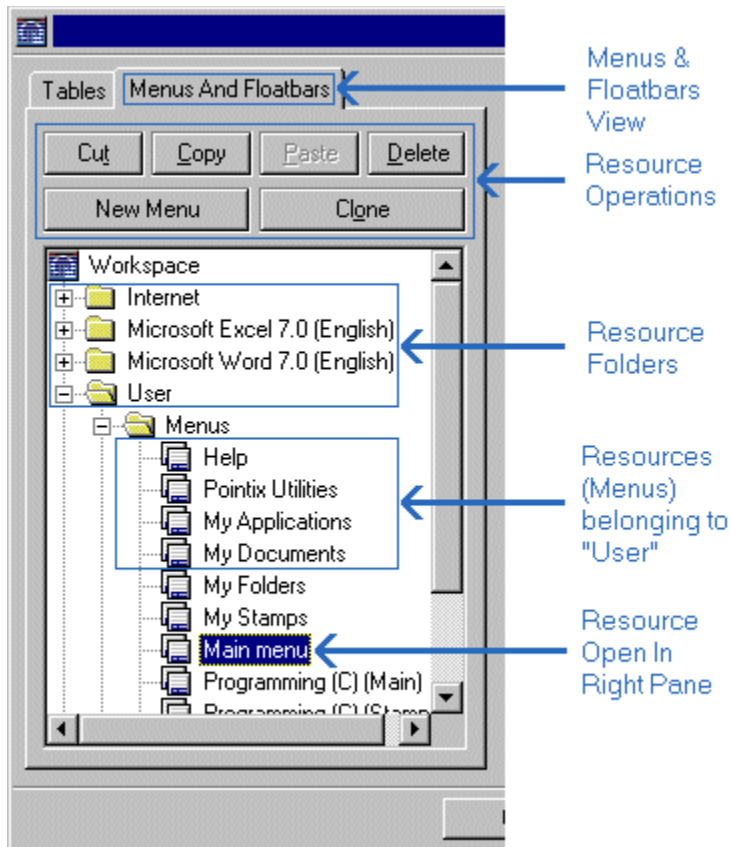
Pop-Mouse stores all your resources in a virtual space called "workspace". Pop-Mouse resources can be organized in the workspace in user-defined folders which resemble the Windows Explorer file-folders.

In Workspace Manager you can:

- create, delete and rename resources
- cut, copy and paste resources between folders
- create, delete and rename folders
- import resource files
- load/save the workspace data from/to and external file

Left Pane

The left pane of Workspace Manager allows you to create, modify, delete and perform other housekeeping tasks on your resources. You can use the clipboard to manipulate resources and move them between folders.



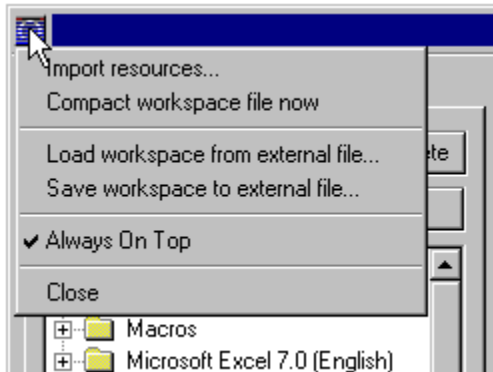
Right Pane

The right pane of the Workspace Manager is an instance of Resource Editor showing the currently selected resource.

Note: Resource folders do not exist as physical file folders; all Pop-Mouse resources are actually stored in a single file and Workspace Manager arranges them in a folder-like view to ease management.

Menu

Click on Workspace Manager's system icon to display the file menu, as shown in the following figure:



Import Resources

Allows you to import a set of resources from an external file. You can use this function to import pre-programmed resources provided with Pop-Mouse, for enhancing the use of some popular applications.

Compact Workspace File Now

Pop-Mouse saves all changes to your configuration in an incremental manner, to minimize the time required by file operations. This increases the workspace file fragmentation each time you make any changes to your workspace. Pop-Mouse will automatically ask you if you want to compact the workspace file when the fragmentation is above 50%. You can also do it manually by selecting this menu option.

Load Workspace From An External File

This option allows you to load a previously-saved workspace file. Warning: The current content of the workspace file is discarded and replaced by the new one.

Save Workspace To An External File

This option allows you to save the current workspace to an external file. You can use this function to take your workspace data to another computer or to make a backup copy.

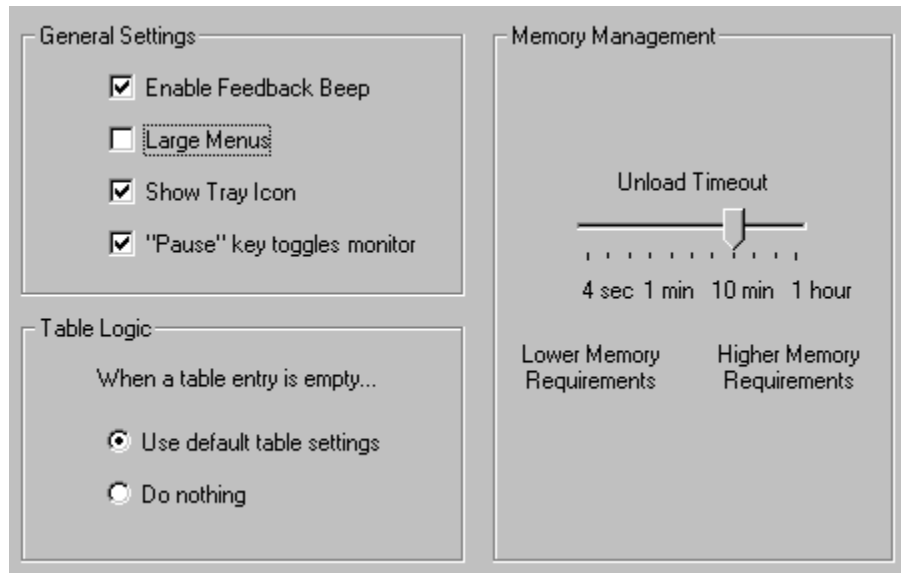
Always On Top

This option allows you to keep the Workspace manager window on top of all other windows, so that you can drag files and shortcuts within the open resource's area. This option is always set by default.

Close

Saves any changes made and closes the Workspace Manager Window.

Options - General Settings



Enable Feedback Beep

Enables/disables audio feedback for glicks and borders.

Large Menus

Displays menus **large** size (larger fonts and total dimensions).

Show Tray Icon

Displays/hides the animated icon on the system tray. If you hide it, you can always access the programs menu by re-launching it (e.g., double clicking on the program's icon on the Desktop while Pop-Mouse is already running).

"Pause" Key Toggles Monitor

The "Pause/Break" key is assigned to turn the monitor window (former "coach") on or off. This feature allows you to peek the current table settings without opening the program's menu. The monitor always shows the table settings according to the current table logic.

Table Logic (Only for Pop-Mouse Commercial Version)

This setting controls how will Pop-Mouse handle an empty cell. If you set "Use default table settings", when a glick or border is unspecified in the current table (i.e., an empty cell is found) Pop-Mouse will trigger the command specified in the same cell of the default table.

This feature allows you to work with a primary table including only general or system-wide settings (the default table) and use the other tables as modifiers of the default table, filling in only the cells that you want to act different from default. If you set "Do Nothing", Pop-Mouse behaves as Engine 3.0.

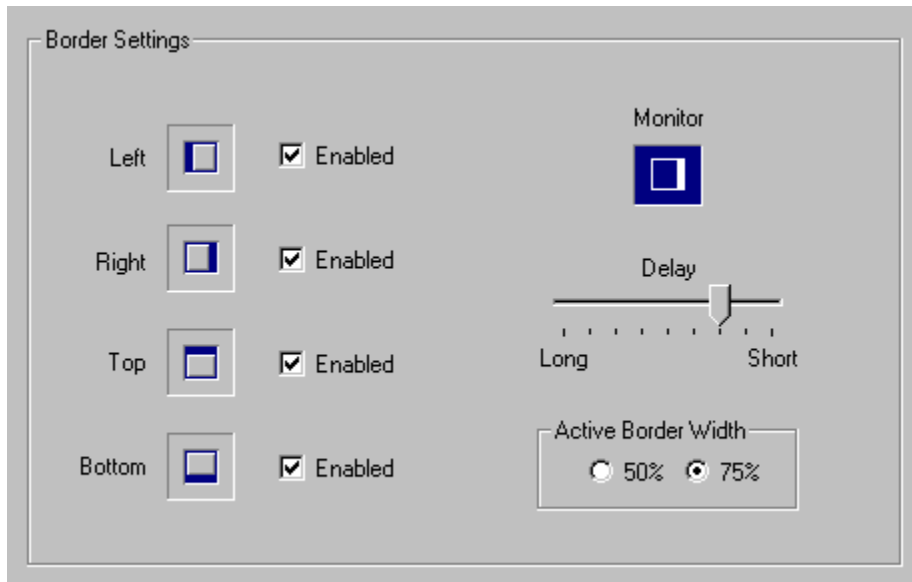
Unload Time-Out

In Pop-Mouse you never need to "close" a window; Pop-Mouse manages resources so that the commands you use most frequently are already loaded in memory at the moment you need them.

Ideally, all commands should be loaded in memory all the time, but this may become a heavy load for your system.

This control allows you to adjust the way Pop-Mouse will handle memory. If you slide the control to the right (longer time-out) Pop-Mouse will try to keep all commands loaded so that they pop up instantly when you call them. If you have enough memory, this might be your choice. On the other hand, if you slide the control to the left (shorter time-out), Pop-Mouse unloads all commands as soon as they are removed from the screen (e.g., by clicking outside the window), releasing system memory. The tradeoff is that next time you invoke that command, it may take a little longer to pop-up.

Options - Border Settings



This dialogue box allows you to adjust the sensitivity with which Pop-Mouse interprets your border commands.

Enabled

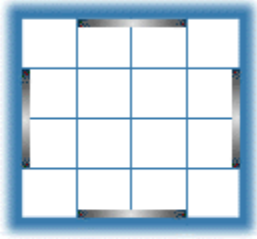
Enables border detection.

Delay

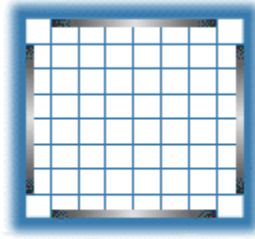
Sets the amount of time Pop-Mouse waits while you keep the pointer attached to a border until it triggers a border command. Adjust this parameter according to your style.

Active Border Width

Borders are not active near the screen corners to minimize unintentional triggering. Set the borders' active width to 50% or 75%, according to your preference.

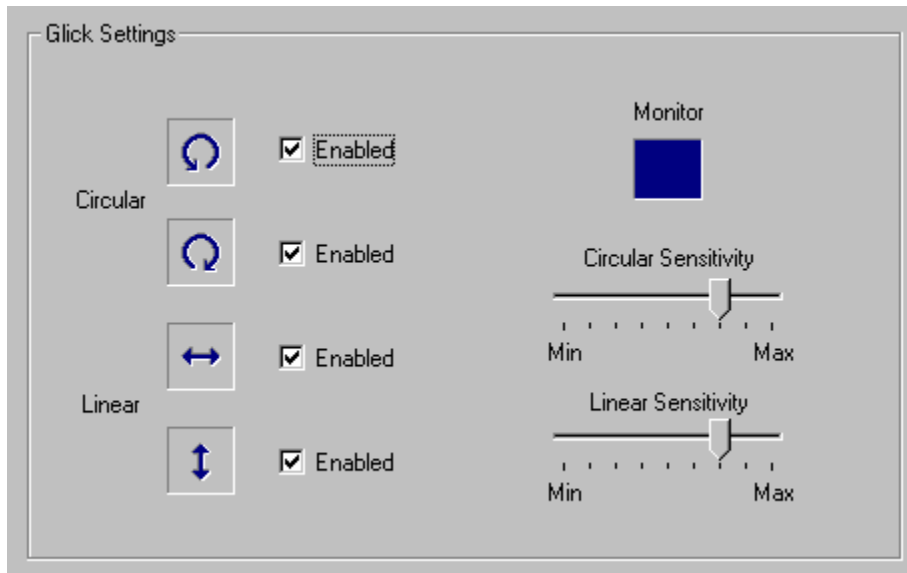


50%



75%

Options - Glick Settings



This dialogue box allows you to adjust the sensitivity with which Pop-Mouse interprets your glick commands.

Enabled

Enables glick detection.

Circular Sensitivity

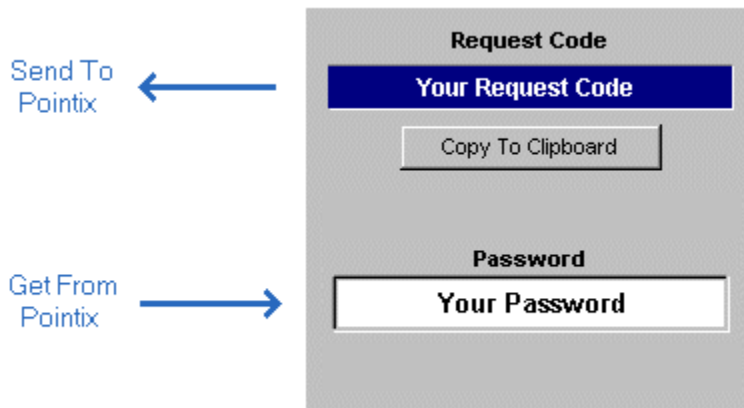
Sets the minimum "size" of the circular glicks (i.e., "p" and "q"). A *low* sensitivity means that small movements are "filtered" to avoid unintentional triggering.

Linear Sensitivity

Sets the minimum "size" of the linear glicks (i.e., "t" and "i"). A *low* sensitivity means that small movements are "filtered" to avoid unintentional triggering.

Registration Codes

Once you have installed Pop-Mouse in your computer, it will work in **Trial Mode**, which means that it will not work continuously but with periodic interruptions. You can switch from **Trial Mode** to **Normal Mode** at any time once you get your **password** from Pointix.



Note: REGISTRATION OF POP-MOUSE LITE IS FREE

How To Order your Password

You can order your password by filling in a simple form at the Pointix web site (www.pointix.com).

You will find the **Request Code** at the dialog box "Options", section: "Registration Codes", accessible from the program's menu.

Note: The request code is variable according to the exact release ID of your program files. Once you get your password, you will be able to use it with your original files every time you need to re-install the program. The Request Code may vary from one release of Pop-Mouse to the next, but it doesn't change otherwise, so that your password will always be valid if you re-install your original files.

Auto-Switch

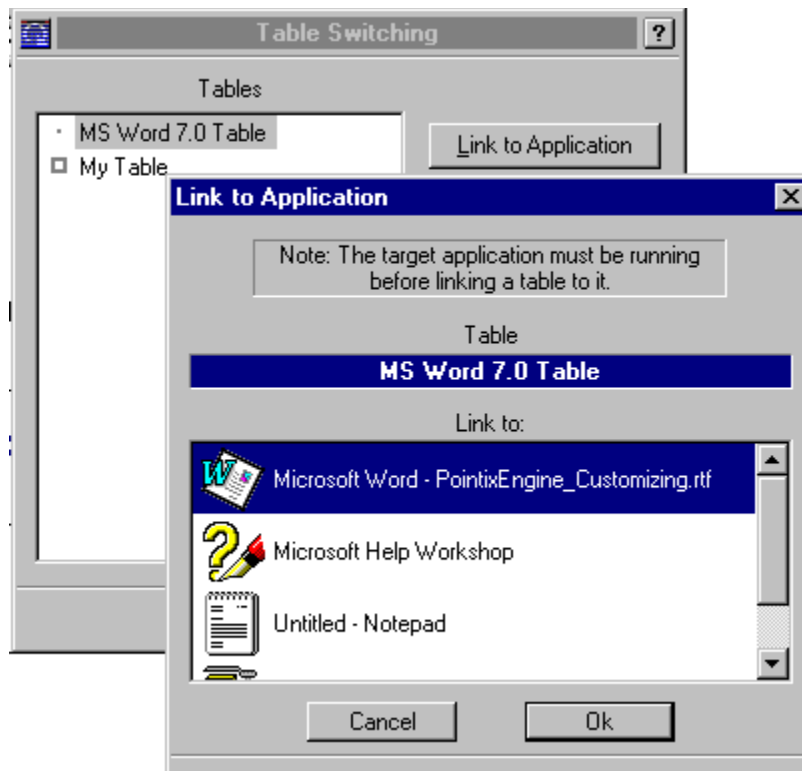
Only for Pop-Mouse Commercial Version

The **Default Table** is the table that Pop-Mouse loads at startup. You must specify a default table, otherwise you must select a table every time you start the program. To specify a default table just select the desired table and click on "Set As Default".

Pontix also includes a very useful feature for advanced users which allows you to link tables to applications, so that those tables switch automatically when you activate their associated applications.

To let Pop-Mouse switch tables for you, you must first **link** the table to the **target application**. To link a table to an application follow the next steps:

- 1) Launch the target application.
- 2) Open "Auto-Switch" from the program's menu (click on the animated icon).
- 3) Select the table.
- 4) Click on "Link To Application"
- 5) Select the target application and click on "Ok"



Note: Tables may be linked on a one-to-one basis, i.e., if you want to link a table to more than one application, you must clone the table and link it to the target application.

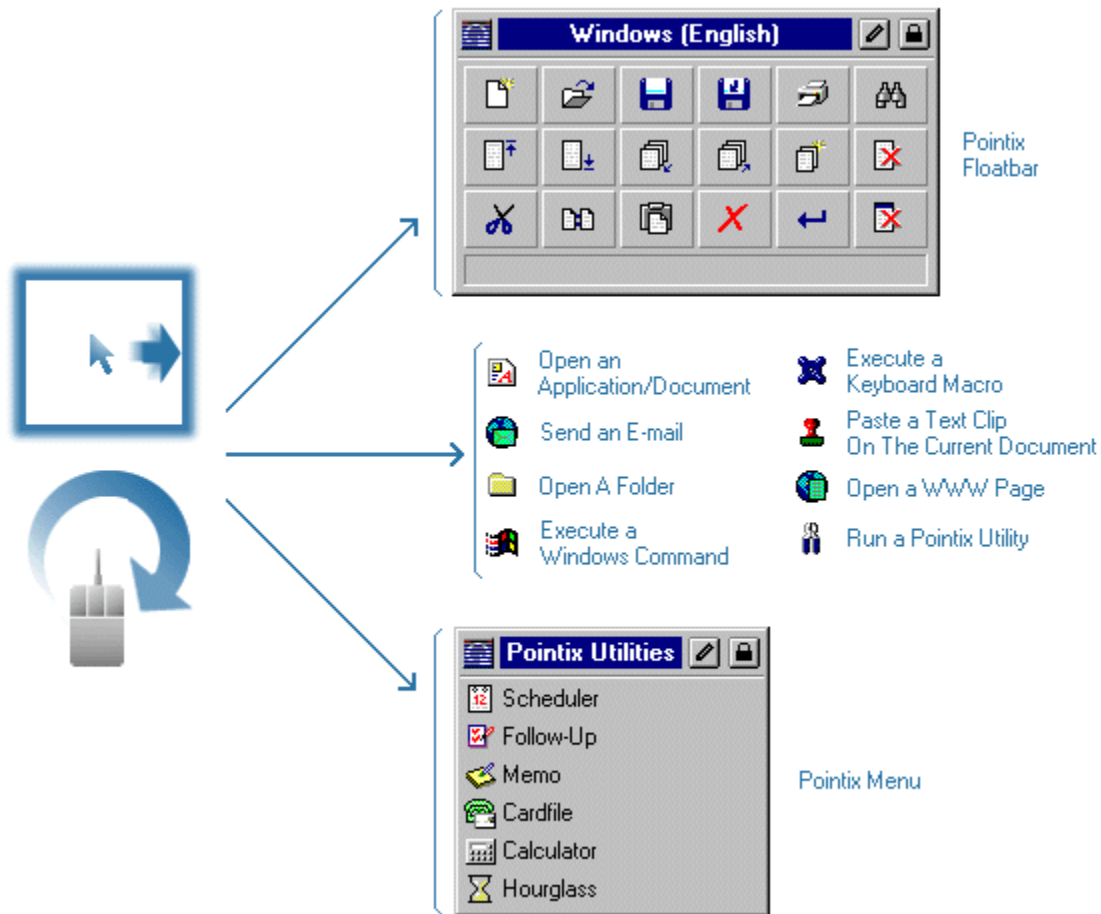
Introduction

Pop-Mouse is a novel utility that enhances the use of a mouse through an exclusive technology that interprets mouse movements and turns them into actions.

Once installed in your computer, Pop-Mouse works on the background, looking at the pointer as it moves around the screen and detects certain mouse actions which include "borders" and "glicks". A border is detected when the mouse pointer hits any screen border and stays still for a short time. A "glick" is detected when the pointer is moved quickly in a circular or back-and-forth fashion.

When a border or glick is detected, an associated pop-up resource (menu, floatbar or application) is displayed.

Pop-Mouse Pro can execute several types of commands, for example: open an application, open a document or www page, launch your e-mail client to send e-mail to a specified address, execute a keyboard macro, pop-up a customized menu containing other commands, etc. etc.



Pop-Mouse commands can be triggered directly with a border or glick or they can also be arranged in menus and floatbars (from floating-toolbars) that pop-up when a border or a glick is detected. Menus and floatbars can be linked to each other allowing you to create a

"floating shell" customized to your needs.

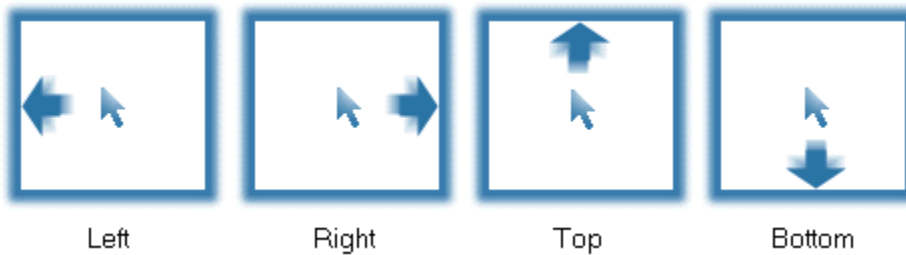
Note: Pop-Mouse Lite includes just a limited set of commands intended to let you appraise the power behind the Pop-Mouse concept. Menus and floatbars in Pop-Mouse Lite are not customizable.

Borders And Glicks

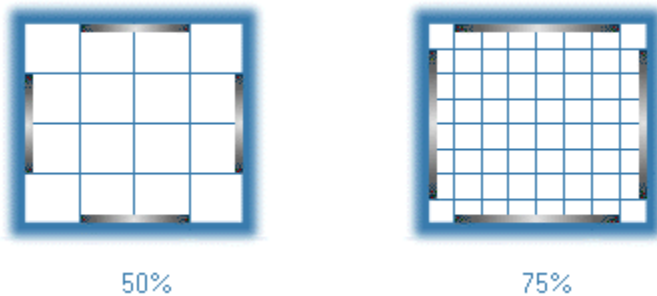
A mouse is used moving the pointer to different screen areas and clicking to select objects, drag them to another screen location, performing tasks on them, etc.

Pop-Mouse enhances your mouse by adding eight actions that can be triggered without pressing any button. These actions include "borders" and "glicks".

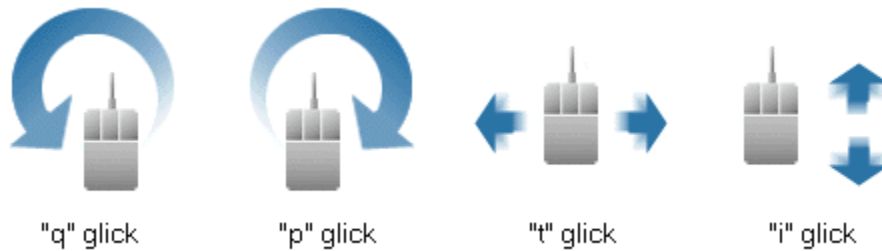
A "border" is detected when the pointer hits any screen border and stays still for a short time. All four borders (i.e., Left, Right, Top and Bottom) can be programmed to trigger any Pop-Mouse command.



Borders are not active near the screen corners to minimize unintentional triggering. You can set the borders' active width to 50% or 75%, according to your preference.



Glicks are certain mouse movements that are rarely done during normal operation of a computer and which are interpreted as commands by Pop-Mouse. There are four glicks: "q", "p", "t" and "i". q and p are circular mouse motions (counterclockwise and clockwise respectively), while t and i are performed moving the mouse back and forth, on the horizontal and vertical axis respectively.



Borders and glicks are used to trigger pop-up resources (menus, floatbars, and utilities). You can adjust the sensitivity with which Pop-Mouse interprets your mouse movements according to your mousing style.

Tip >> : Glicks are more comfortable if done using only wrist and fingers. Try to avoid moving your arm to move the mouse pointer.

Only for Pop-Mouse Commercial Version

Borders and glicks can be used alone or they can also be combined with the "Control" or "Shift" keys to produce 24 combinations. Pop-Mouse uses internal arrays called tables to define which command is associated to each border or glick.

Tip >> : It is convenient to use borders to trigger general functions (e.g., launching applications, menus, floatbars, etc.) and leave glicks for more specific, time-consuming commands (e.g., zoom-in/zoom-out).

Tables

Pop-Mouse uses internal arrays called **Tables** to define which command or resource is associated to each border or glick.

Note: Pop-Mouse Lite includes just a limited set of commands intended to let you appraise the power behind the Pop-Mouse concept. Menus and floatbars in Pop-Mouse Lite are not customizable.

Only for Pop-Mouse Commercial Version

Borders and glicks can be used alone or they can be combined with the "Control" or "Shift" keys to produce 24 combinations.

Direct	+Control	+Shift
<input type="checkbox"/> Cell 1	<input type="checkbox"/> Cell 1 C	<input type="checkbox"/> Cell 1 S
<input type="checkbox"/> Cell 2	<input type="checkbox"/> Cell 2 C	<input type="checkbox"/> Cell 2 S
<input type="checkbox"/> Cell 3	<input type="checkbox"/> Cell 3 C	<input type="checkbox"/> Cell 3 S
<input type="checkbox"/> Cell 4	<input type="checkbox"/> Cell 4 C	<input type="checkbox"/> Cell 4 S
<input type="checkbox"/> Cell 5	<input type="checkbox"/> Cell 5 C	<input type="checkbox"/> Cell 5 S
<input type="checkbox"/> Cell 6	<input type="checkbox"/> Cell 6 C	<input type="checkbox"/> Cell 6 S
<input type="checkbox"/> Cell 7	<input type="checkbox"/> Cell 7 C	<input type="checkbox"/> Cell 7 S
<input type="checkbox"/> Cell 8	<input type="checkbox"/> Cell 8 C	<input type="checkbox"/> Cell 8 S

Tables are the basic resource within Pop-Mouse. Tables define the path to reach all your commands because they are always at the first position in the command chain.

Use Resource Editor to create, clone, and edit tables to configure Pop-Mouse for different purposes and applications.

Rule: There is always one (and only one) active table.

You can switch to a different table by selecting it from the programs menu. You can also program Pop-Mouse to switch the table automatically when you activate a particular application.

Default Table

One of the tables must be defined as the **Default Table**. The default table serves two purposes:

1) It is the table that Pop-Mouse loads at startup.

2) When a table cell is empty and the associated border or click is performed, Pop-Mouse triggers the command it finds (if any) in the same cell in the default table. This feature allows you to work with a primary table including general or system-wide settings, and use the other tables only as modifiers of the default table, filling in only the cells that you want to act different from default. (Note: this feature may be disabled for compatibility with previous versions).




You can set the default table from the Workspace Manager or from the dialog Auto-Switch , both accessible from the program's menu.

Tip >> : If you are working with a table other than the default one, you can switch to the default table momentarily by pressing "Alt".




Pop-Mouse Commands

Within Pop-Mouse, a command is any action performed as a unit either by doing a border or click or by clicking an item in a Pop-Mouse resource. Pop-Mouse 3.10 commands are organized in four categories:




1) Open Commands:

Icon	Name	Action
	Application-Document (COM)	Open an application or document.
	Folder (COM)	Open a folder in an Explorer window
	Pop-Mouse Utility	Activate a Pop-Mouse Utility



2) Executable Commands:

Icon	Name	Action
	Keyboard Sequence (COM)	Simulate a sequence of keystrokes (macro)
	Stamp (COM)	Paste a text clip on the active document
	Generic Command	Execute an internal Windows command (e.g., minimize)

3) Internet Commands:

Icon	Name	Action
	WWW Page	Open your default browser at the specified URL
	Mail-To	Open your default e-mail application and aim it at the specified e-mail address
	Telnet (COM)	Open a Telnet session at the specified host

4) Resource Commands:

Icon	Name	Action
	Floatbar	Pop-Up the specified floatbar
	Menu	Pop-Up (or display alongside) the specified menu.

(COM) Only available in Pop-Mouse Commercial Version

Only for Pop-Mouse Commercial Version

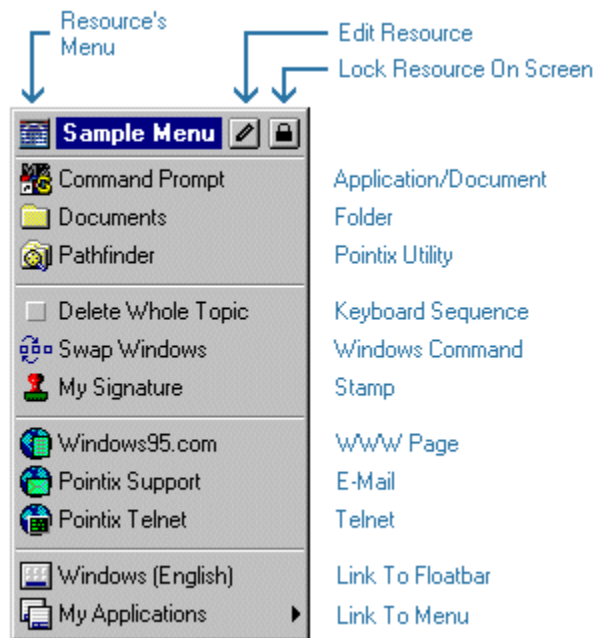
Any command can be assigned to a border or glick (i.e., to a table cell) or can also be included in a Pop-Mouse resource, so that it can be accessed by clicking on it. You can create, clone, and edit commands and you can also arrange them on tables, menus and floatbars (resources) as you prefer.

Pop-Mouse Resources

Any Pop-Mouse command can be placed in a table cell (i.e., it can be associated with a border or glick), or it can also be placed in a menu or floatbar so that it can be triggered by clicking on it. Tables, menus and floatbars act as command repositories in which you store your commands and from which you can trigger those commands. Tables, menus and floatbars are called generically *resources*.

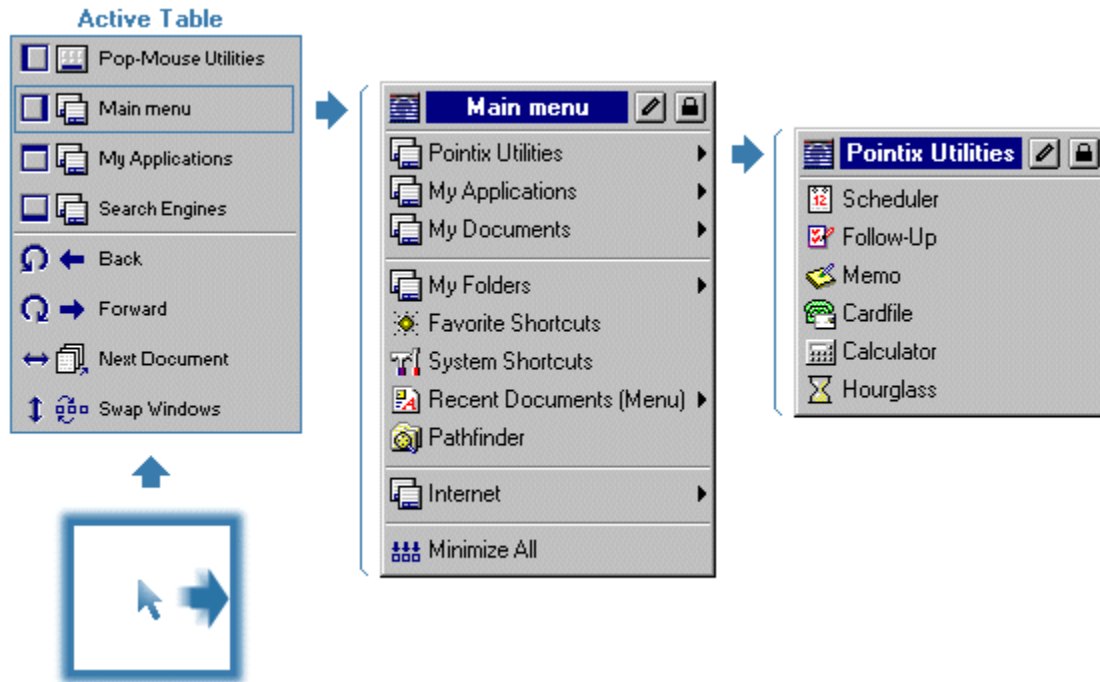
Rule: By definition, a Pop-Mouse command always resides on a resource. If it resides on a table, it is triggered by a border or glick. If it resides on a menu or floatbar, it is triggered by a mouse click.

The following figure shows a sample menu holding a variety of commands (one of each type):



A Pop-Mouse command can be a link to another Pop-Mouse resource. This feature allows you to define chains of menus and/or floatbars to configure a floating desktop that lets you access your most used objects without ever minimizing a window.

The following figure shows an example of how Pop-Mouse is used to access your commands.



Although tables are considered Pop-Mouse resources because they hold commands, tables have substantial differences respect of menus and floatbars in the way they behave and the way they are used.










For example: menus and floatbars can be cross-linked to provide access to more commands. Tables can not be linked from other resources, since they are always the first link of the chain (i.e., any action performed through Pop-Mouse begins with a border or a click).

Note: Pop-Mouse Lite includes just a limited set of commands intended to let you appraise the power behind the Pop-Mouse concept. Menus and floatbars in Pop-Mouse Lite are not customizable.

Pop-Mouse Utilities

Pop-Mouse includes a set of utilities that run in pop-up windows and allow you to perform a variety of functions with minimum effort.

Among these utilities you will find:

	Pathfinder (COM)	Explorer-like utility for browsing files and folders
	Favorite Shortcuts	Explorer-like folder-view holding shortcuts to your most frequently accessed objects
	System Shortcuts	Idem, for system objects
	Scheduler (COM)	Personal scheduling and alarm utility
	Follow - Up (COM)	Personal to-do-list utility
	Memo (COM)	Floating multi-notepad utility
	Card File (COM)	Card file utility
	Calculator	Programmable commercial calculator
	Hourglass (COM)	Useful alarm utility for short-range reminders

(COM) Only available in Pop-Mouse Commercial Version

All these utilities were designed following the Pointix guidelines for Pop-Mouse Floating Utilities (PFUs).

Some of these rules follow:

Pop-Mouse utilities need never be closed. They are loaded and unloaded from memory according to usage.

They follow you around the screen. Pop-Mouse utilities pop-up always at the **focus point** as defined in the PFU API.

Volatile windows. Pop-Mouse utilities do not consume any screen real estate while they are not in use. When you click outside a PFU window, it is hidden until you invoke it again.

Note: Pop-Mouse Lite includes just a limited set of commands intended to let you appraise the power behind the Pop-Mouse concept. Menus and floatbars in Pop-Mouse Lite are not customizable.

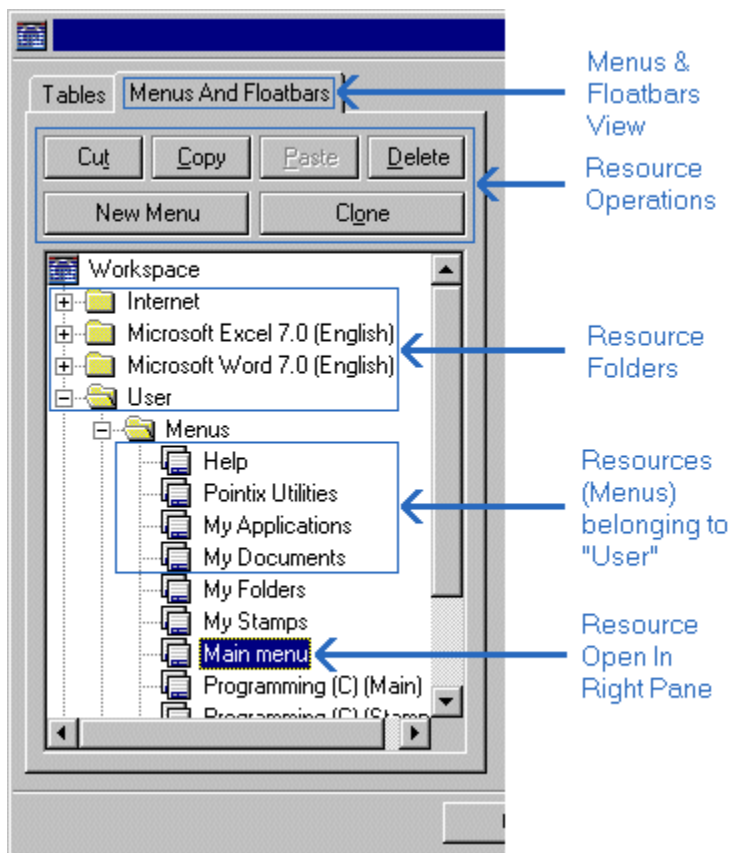
The Pop-Mouse Workspace

Only for Pop-Mouse Commercial Version

Pop-Mouse allows you to create as many commands and resources as you need. You can combine those commands and resources to create your own *floating shell*, including shortcuts to just every frequently used object of your system and organize them according to your needs.

To ease maintenance, your resources can be organized in *folders* in the same way you manage your files in Windows. You use the Workspace Manager to create, edit and maintain your resources.

The following figure shows a typical workspace view while using Workspace Manager:



When you select a resource in the left pane, Workspace Manager opens that resource in the Resource Editor so that you can edit its content. To Create, Delete, Rename, Copy, Cut, Paste or Clone resources use the left pane buttons. The right-pane buttons modify only the items of the selected resource.

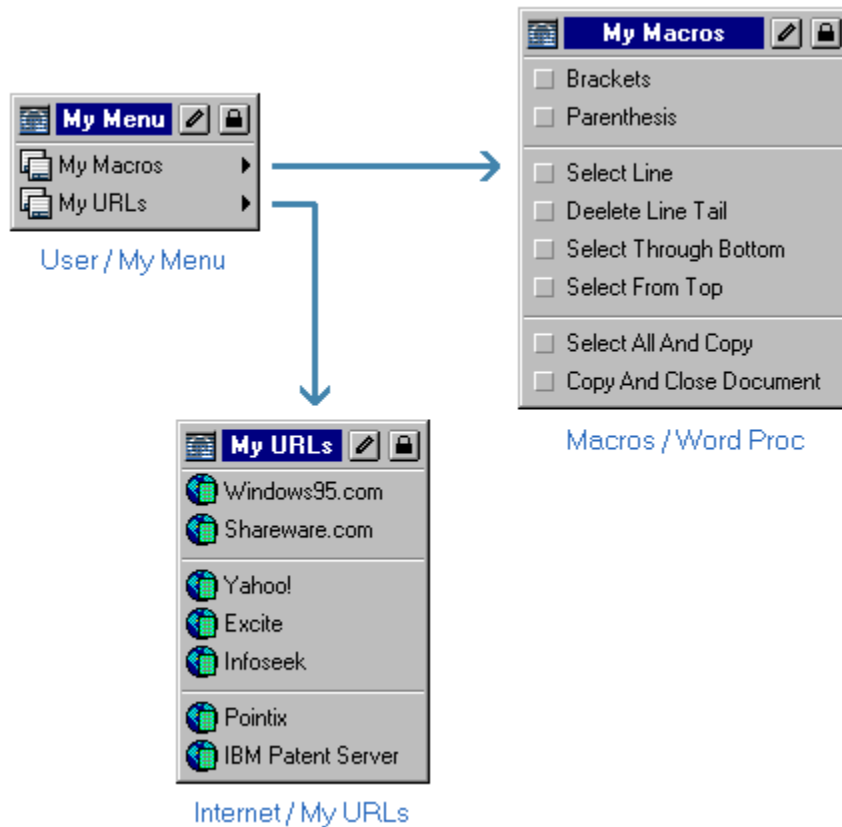
Access To Resources vs. Resource Location

The location of a resource in the workspace has no relation to the way you access that resource. The location of a resource in the workspace is defined by you and it only affects

ease of management. The way you access that resource depends on how you define your links to it.

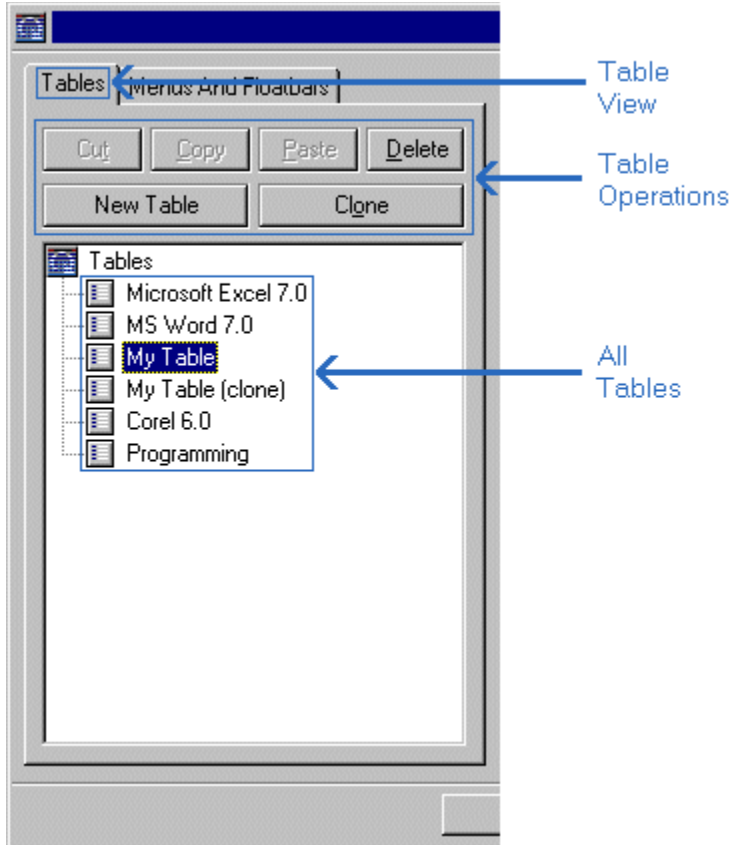
For example, if you decide to create a menu holding your most visited URLs, it would be a good idea to create that menu on the "Internet" folder, so that it is easy to locate. You may also decide to create another menu with a bunch of keyboard sequences to automate some tasks while you work in your word processor. You would probably place that resource in the "User" folder, or you might even want to create another folder called "Macros". Later, you decide to create a menu that holds links to all your menus, so that they are easily accessed from your default table. That menu may be called "My Menu" and would probably be a good idea to place it in the "User" folder.

The following figure shows how that configuration would look like:



Rule: The way the menus are linked has no relation with the location of those menus in the workspace.

Although tables are considered resources and belong to the workspace, they are not organized in folders. The following figure shows the workspace in "table-view" mode.



Workspace Files

Pop-Mouse keeps all workspace resources and folders in a single internal file, so that you don't need to open and close this file each time you run Pop-Mouse or make changes in its configuration.

You can save your workspace data in an external file to take your data to another computer or to make a backup copy. You can also load an entire workspace from a previously-saved workspace file.

Pop-Mouse comes with a bunch of **resource files** containing pre-programmed resources to enhance your work with a variety of popular applications.

Note: The name of the workspace file is "USER.PWK" and resides in the "Data" sub-folder.

Note: Pop-Mouse Lite includes just a limited set of commands intended to let you appraise the power behind the Pop-Mouse concept. Menus and floatbars in Pop-Mouse Lite are not customizable.

DEFINITIONS

Workspace

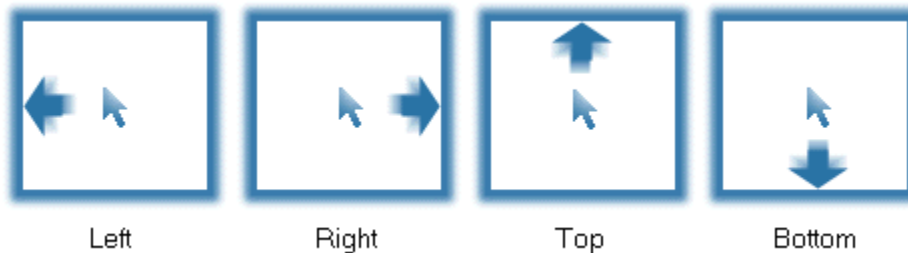
A virtual space where Pop-Mouse stores all resources.

What Is Pop-Mouse?

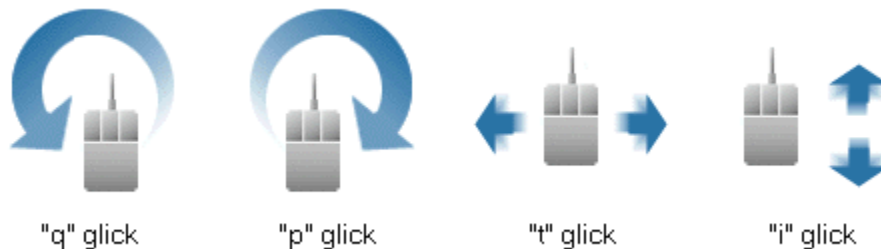
What is Pop-Mouse?

Pop-Mouse is a new way of operating and managing your PC. It's based on an exclusive technology that allows you to trigger a variety of commands either by "touching" the screen borders with the pointer or doing slight mouse movements called "glicks".

The four screen borders (i.e., left, right, top and bottom) are activated when you hit them gently with the pointer. After a short time-out (which is adjustable), Pop-Mouse executes a command associated with that border.



Glicks comes from glide-clicks, which are pointer motions that are rarely done during normal operation of your applications and therefore can be used as mouse input commands. Pop-Mouse uses four glicks which are:



Borders and glicks are used to pop-up menus, floating toolbars (floatbars), and utilities with which you can perform a variety of commands, like for example: opening a www page, opening your e-mail application, executing a keyboard macro, etc.

With Pop-Mouse, all repetitive operations can be performed with just a few mouse movements, therefore significantly improving your productivity and comfort at work.

Pop-Mouse Commands

You use Pop-Mouse to trigger commands. Within Pop-Mouse jargon, a command is any action triggered from a Pop-Mouse resource. Pop-Mouse commands are organized in three categories:

Open Commands:	Bringing an application, a document, a folder or a Pop-Mouse utility to the top of the screen.
Executable Commands:	Performing an action like a keyboard sequence, a window command (close, minimize, etc.), pasting a text clip on the current document (stamps), etc.
Internet Commands:	Opening a frequently visited www page, opening your e-mail application ready to send a message to a specified address, opening a Telnet session to a frequently visited host.
Link Commands:	Showing up a Pop-Mouse menu or floatbar which contains another group of commands.

Note: Pop-Mouse Lite includes just a limited set of commands intended to let you appraise the power behind the Pop-Mouse concept. Menus and floatbars in Pop-Mouse Lite are not customizable.

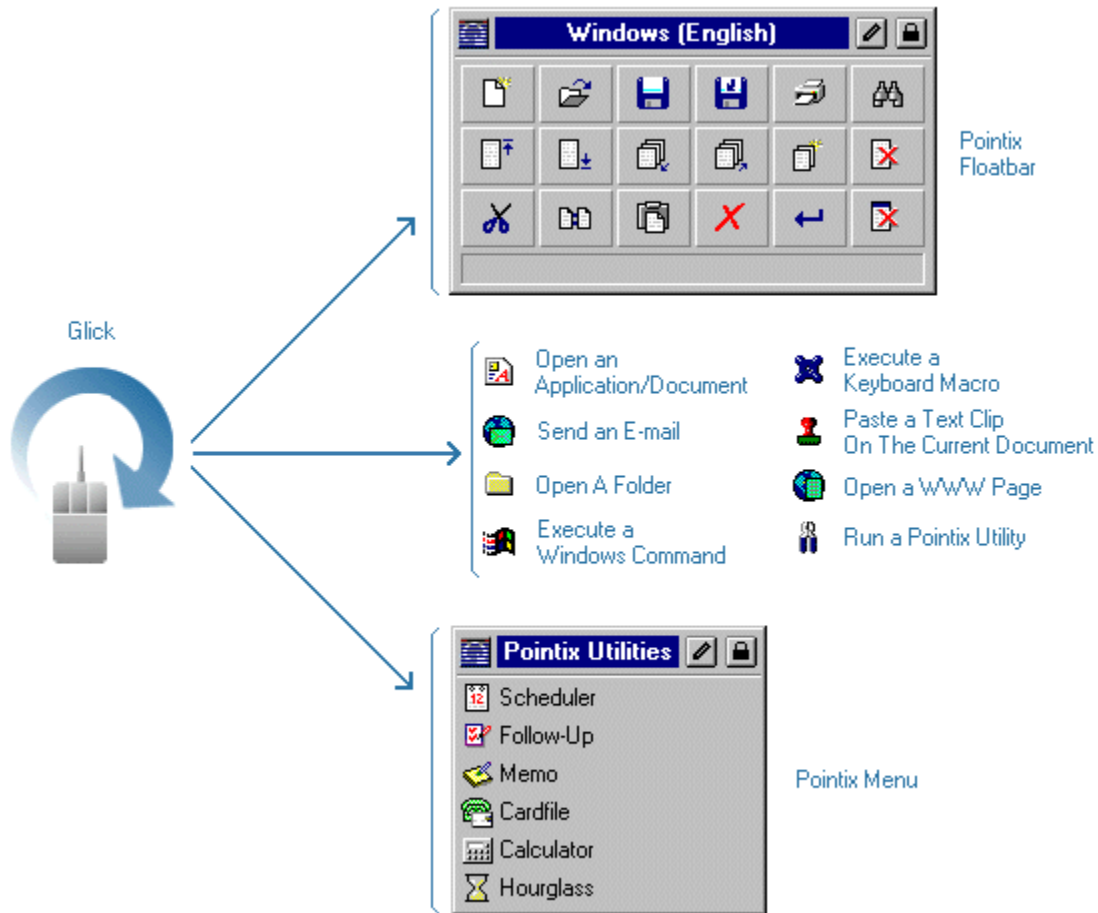
Pop-Mouse Resources

Pop-Mouse allows you to trigger commands either directly doing a border or glick, or indirectly by clicking their items on a Pop-Mouse resource.

A Pop-Mouse command can be triggered by several methods:

- 1 Assigning it to a border or glick so that it can be triggered just with a mouse movement.
- 2 Selecting it from a menu which, at the same time, is assigned to a border or a glick. You can then trigger the command doing the corresponding border or glick and clicking on the command's item.
- 3 Selecting it from a menu which is referenced in another menu which, in turn, is referenced in a third menu assigned to a border or a glick... and so on.

The following figure shows how Pop-Mouse is used for this purpose:



Pop-Mouse Utilities

The Pop-Mouse kernel is a highly developed operating code capable of managing applications developed according to the Pop-Mouse Floating Utilities (PFU) standard. This standard provides a framework for writing applications that can run in a pop-up window and never need to be closed or minimized, optimizing screen real estate usage.

Pop-Mouse comes with a set of floating applications that will help you in a variety of tasks. All these applications behave as Pop-Mouse commands, so they can be opened by a border or glick or they can be invoked from a Pop-Mouse menu or floatbar, as any other command.

The great advantage of using these utilities is that they never need to be launched or closed since the Pop-Mouse kernel loads and unloads them automatically as needed. They are always there, available just a mouse movement away and you'll never have to take care of closing or minimizing them.



Note: Pop-Mouse Lite includes just a limited set of commands intended to let you appraise the power behind the Pop-Mouse concept. Menus and floatbars in Pop-Mouse Lite are not customizable.

Using Pop-Mouse For The First Time

Basic Concepts About Using Pop-Mouse

Rule: Within Pop-Mouse, you don't need to close any windows. To hide a window, just click outside it.

When you start using Pop-Mouse, the first thing you may note is that Pop-Mouse windows don't have a "Close" button. Instead, they have a "Lock" button on the same place. This is because in Pop-Mouse, windows are shown only while they are needed.

In Windows, it is assumed that you want all windows shown until you decide to **close** any of them. In Pop-Mouse, it is assumed you want all windows hidden until you decide to **show** any of them. If you want a given window to be shown all the time, you may lock it on the screen so that it doesn't hide when you click outside the window.

So, how do you close a Pop-Mouse window or application?

When you click outside a Pop-Mouse window or when you invoke another application or resource through a border or glick, Pop-Mouse hides the window but it doesn't close it. Pop-Mouse uses a time-based method to load and unload applications, so that you don't need to take care of launching and closing them. After a window is hidden, Pop-Mouse will wait a predefined time-out, and if you haven't used that window during that time, it will close the window and unload the associated application from memory. The application's status is generally saved before closing, so that next time you open it you find everything the way it was the last time you used it. The time Pop-Mouse waits before closing an application is called "Unload Time-out" and can be adjusted from the "Options" dialog.

Getting Used To The Border and Glick Concepts

The first stage in using Pop-Mouse is getting used to the border and glick concepts. In "conventional mousing" you can move the pointer freely because you know that nothing will happen until you click something or somewhere. When you start using Pop-Mouse you must become aware that certain mouse movements now operate as commands. This requires that you to move your mouse in a more definite manner, following straighter trajectories and avoiding random movements. Once you have incorporated Pop-Mouse's glicks to your customary operation, you will have added great functionality to your interface and will realize how convenient it is to use the mouse for more than just pointing and clicking. Take a few minutes to "play" with the mouse and adjust the sensitivity parameters to agree with Pop-Mouse on your way of doing borders and glicks .

Try To Use A High Quality Mouse

Since borders and glicks are interpreted on the basis of pointer movements, the more precise your mouse is, the better Pop-Mouse will be able to interpret your movements. If your mouse does not faithfully reproduce the movements of your hand, Pop-Mouse cannot interpret you correctly. For the same reasons, it is important that your mouse be in a good condition. If you have a ball-type mouse (which is the most commonly used) try to keep the ball and mechanisms free from lint to avoid the erratic operation which frequently occurs when foreign materials accumulate in the mouse mechanical parts.

Customize It!

Pop-Mouse is an incredibly powerful tool if you learn how to program its functions. It comes with a pre-programmed set of menus and floatbars so that you can start testing it right away. But the real power behind Pop-Mouse is in its ability to replace most of the shell functions (Start menu) providing shortcuts to just every frequently used object. To have a feel of what Pop-Mouse can do for you, follow the configuration example given in [Test Drive](#).

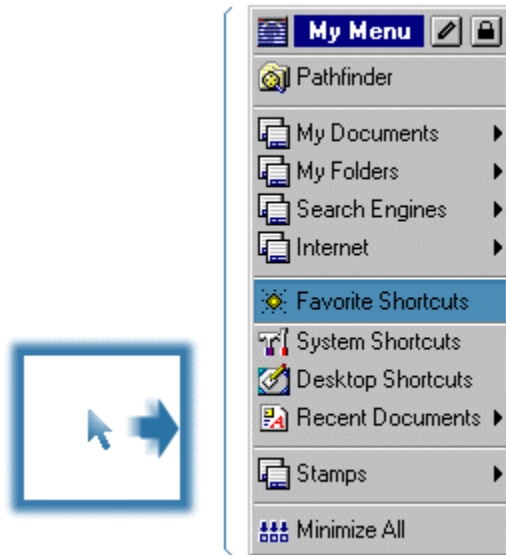
Note: Pop-Mouse Lite includes just a limited set of commands intended to let you appraise the power behind the Pop-Mouse concept. Menus and floatbars in Pop-Mouse Lite are not customizable.

Test Drive

You have just installed [Pop-Mouse Lite](#) and you want the shortest path to be up and running. Okay, we'll help you to get there ASAP. Just follow the next guidelines and you will be using Pop-Mouse Lite immediately.

Step 1: Configure Your Favorite Shortcuts Window

If you do a right border (hit the right border of your screen with the pointer), you will activate [My Menu](#). There you will find [Favorite Shortcuts](#):



Open it and lock the window somewhere on your screen.



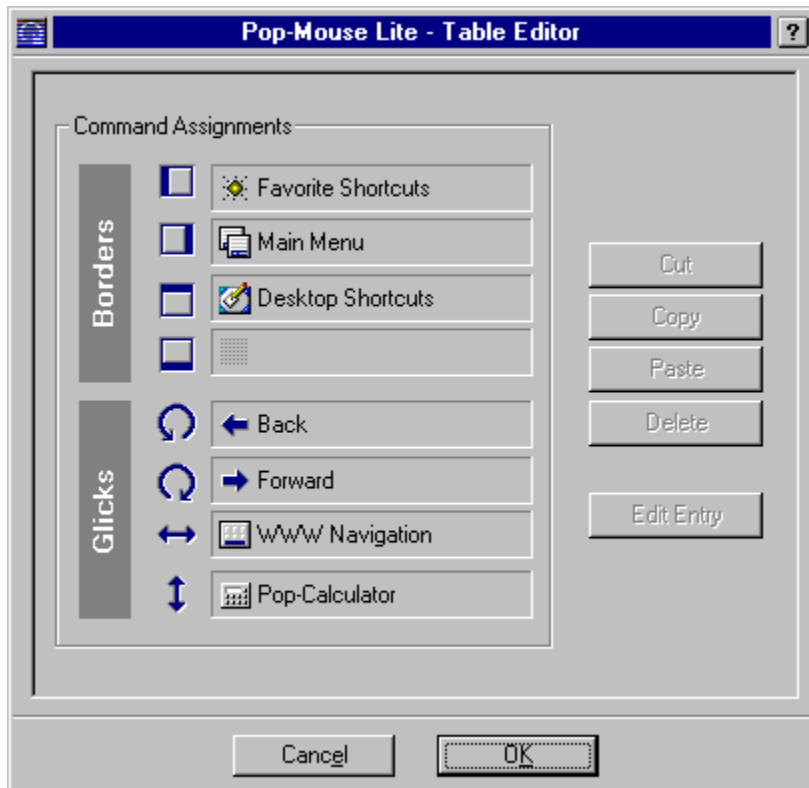
Now grab all your favorite shortcuts from all frequently accessed places (like for example the desktop and the Start menu) and paste them inside the window. You can do this by copy-and-paste, drag-and-drop or you can also press "Create New Shortcut" (shown on the figure) and browse your disk to locate the shortcut files.

You can do the same with [System Shortcuts](#) which is intended to hold shortcuts to system

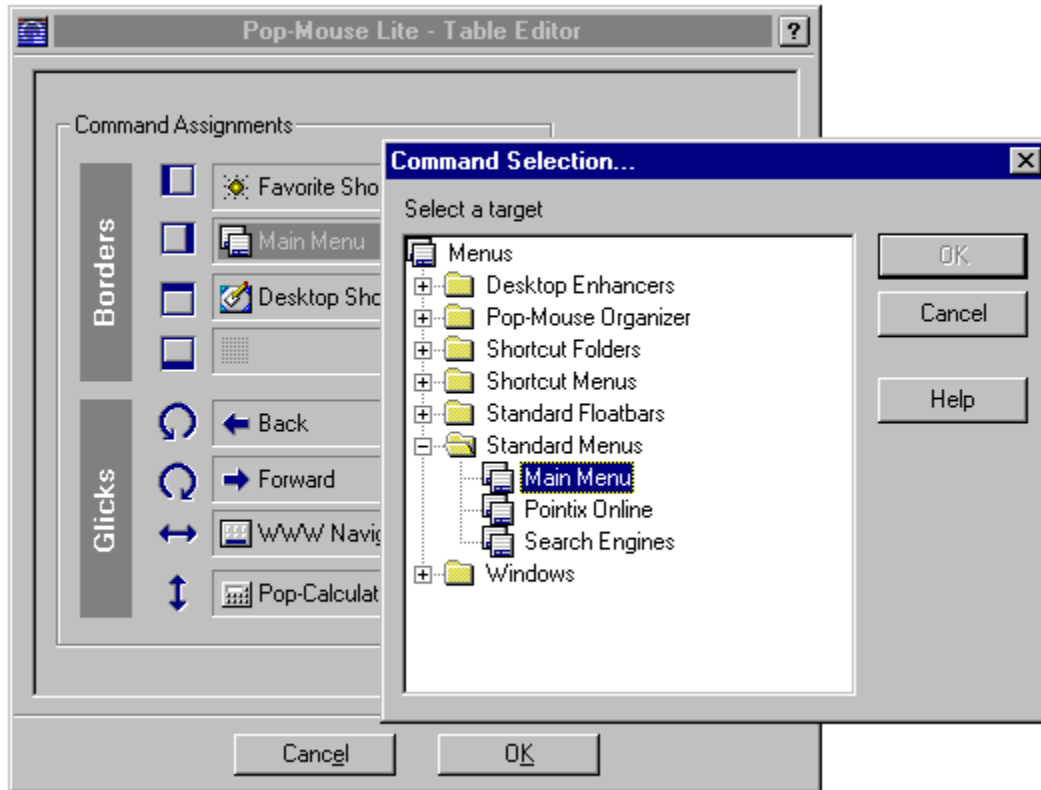
dialogs and folders.

Step 2: Configure Your Table

Pop-Mouse uses borders and glicks to trigger commands. Pop-Mouse Lite includes a table which you can customize to associate borders and glicks to commands. To edit the table, select "Edit Table..." from the program's command.



To change a table entry, just select it and press "Edit Entry..." or double-click on the cell. Pop-Mouse Lite will show you all available commands (floatbars, menus, applications and windows shortcuts).



Summary

Pop-Mouse Lite includes a limited set of general purpose menus, floatbars and utilities, so that you can appraise the power behind the Pop-Mouse concept. Although you have seen just a tiny fraction of what Pop-Mouse can do for you, you should get the picture now of how useful it is and how can you use it to improve your everyday work.

Enjoy Pop-Mouse!

How To Register Pop-Mouse Lite

Pop-Mouse Lite is freeware, i.e., you don't need to pay for a license to use it. All we ask is that you register your copy so that we can contact you for new updates, special offers about our other products, etc.

The enabling password is sent to your e-mail account exclusively (no snail mail) within two business days from the time we receive the request.

To register Pop-Mouse Lite, just fill in the form on our web site at <http://www.pointix.com>

You need to specify the **Request Code**, which you will find at the dialog box "Options", section: "Registration Codes", accessible from the program's menu.

Technical Support

Technical support is available at no charge for registered users. Support options are:

e-mail: support@pointix.com
www: <http://www.pointix.com>

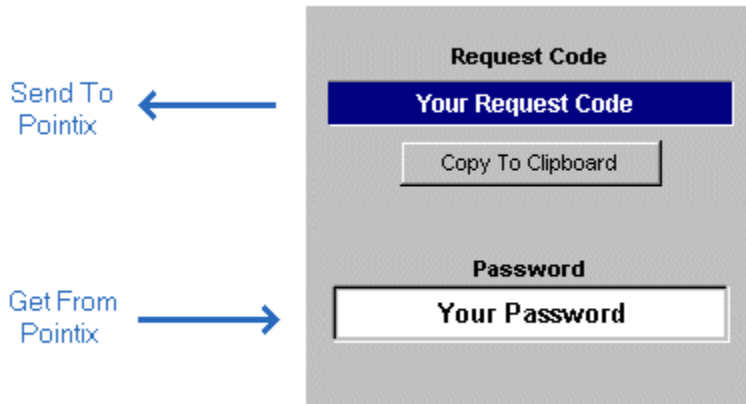
Postal Mail: Write to:

"Technical Support"
Pointix Corporation
1519 Pennsylvania Ave. #2,
Miami Beach, FL 33139, USA

Phone: Not available as of June 1998.

How To Enable Pop-Mouse Lite

Once you have installed Pop-Mouse Lite in your computer, it will work in **Trial Mode**, which means that it will not work continuously but with periodic interruptions. You can switch from **Trial Mode** to **Normal Mode** at any time once you get your **password** from Pointix Corporation (at no charge).



How To Get your Password

You can request your password by filling in a simple form at the Pointix web site (www.pointix.com).

You will find the **Request Code** at the dialog box "Options", section: "Registration Codes", accessible from the program's menu.

System Requirements

Minimum configuration required to run Pop-Mouse Lite:

- An 486 IBM PC compatible or higher
- Windows 95/NT
- 5 Mb of free hard disk space
- 8 Mb RAM
- Any mouse or other two-dimensional pointing device

During installation Pop-Mouse Lite does not alter any configuration parameters in your PC, nor does it make any changes to your drivers.

If you find any problems installing Pop-Mouse Lite please send e-mail to support@pointix.com.

License Agreement

POINTIX CORPORATION ELECTRONIC END USER LICENSE AGREEMENT FOR POP-MOUSE LITE

NOTICE TO USER: THIS IS A CONTRACT. BY INSTALLING THIS SOFTWARE YOU ACCEPT ALL THE TERMS AND CONDITIONS OF THIS AGREEMENT.

This Pointix Corporation ("Pointix") End User License Agreement accompanies the **Pop-Mouse Lite** product (freeware version) and related explanatory materials ("Software"). The term "Software" also shall include any upgrades, modified versions or updates of the Software licensed to you by Pointix.

Upon your acceptance of this Agreement, Pointix grants to you a nonexclusive license to use the Software, provided that you agree to the following:

1. Use of the Software.

- You may install the Software on a hard disk or other storage device; install and use the Software on a file server for use on a network for the purposes of (i) permanent installation onto hard disks or other storage devices or (ii) use of the Software over such network; and make backup copies of the Software.

- You may make and distribute unlimited copies of the Software, including copies for commercial distribution, as long as each copy that you make and distribute contains this Agreement, the Pop-Mouse Lite installer, and the same copyright and other proprietary notices pertaining to this Software that appear in the Software. If you download the Software from the Internet or similar on-line source, you must include the Pointix copyright notice for the Software with any on-line distribution and on any media you distribute that includes the Software.

2. Intellectual Property. The Software is owned by Pointix and its suppliers, and its structure, organization and code are the valuable trade secrets of Pointix and its suppliers. The Software also is protected by United States Patent Law, United States Copyright Law and International Treaty provisions. You may use trademarks only insofar as required to comply with Section 1 of this Agreement, in accordance with accepted trademark practice, including identification of trademark owner's name. Such use of any trademark does not give you any rights of ownership in that trademark. Except as stated above, this Agreement does not grant you any intellectual property rights in the Software.

3. Restrictions. You agree not to modify, adapt, translate, reverse engineer, decompile, disassemble or otherwise attempt to discover the source code of the Software.

4. No Warranty. The Software is being delivered to you AS IS and Pointix makes no warranty as to its use or performance. POINTIX AND ITS SUPPLIERS DO NOT AND CANNOT WARRANT THE PERFORMANCE OR RESULTS YOU MAY OBTAIN BY USING THE SOFTWARE OR DOCUMENTATION. POINTIX AND ITS SUPPLIERS MAKE NO WARRANTIES, EXPRESS OR IMPLIED, AS TO NONINFRINGEMENT OF THIRD PARTY RIGHTS, MERCHANTABILITY, OR FITNESS FOR ANY PARTICULAR PURPOSE. IN NO EVENT WILL POINTIX OR ITS SUPPLIERS BE LIABLE TO YOU FOR ANY CONSEQUENTIAL, INCIDENTAL OR SPECIAL DAMAGES, INCLUDING ANY LOST PROFITS OR LOST SAVINGS, EVEN IF A POINTIX REPRESENTATIVE HAS BEEN ADVISED OF THE POSSIBILITY OF SUCH DAMAGES, OR FOR ANY CLAIM BY ANY THIRD PARTY. Some states or jurisdictions do not allow the exclusion or limitation of incidental,

consequential or special damages, or the exclusion of implied warranties or limitations on how long an implied warranty may last, so the above limitations may not apply to you.

5. Governing Law and General Provisions. This Agreement will be governed by the laws of the State of Florida, U.S.A., excluding the application of its conflicts of law rules. If any part of this Agreement is found void and unenforceable, it will not affect the validity of the balance of the Agreement, which shall remain valid and enforceable according to its terms. You agree that the Software will not be shipped, transferred or exported into any country or used in any manner prohibited by the United States Export Administration Act or any other export laws, restrictions or regulations. This Agreement shall automatically terminate upon failure by you to comply with its terms. This Agreement may only be modified in writing signed by an authorized officer of Pointix.

Unpublished-rights reserved under the copyright laws of the United States.
Pointix Corporation, Miami Beach, Florida.

Pointix is a trademark of Pointix Corporation.

**YOUR ACCEPTANCE OF THE FOREGOING AGREEMENT WAS INDICATED DURING
INSTALLATION.**

About...



Module: **Pop-Mouse Lite**
Version: **3.10**

Copyright 1996-1998, Pointix Corporation. All rights reserved.

Contact Pointix:

Address:

Pointix Corporation
1519 Pennsylvania Ave. #2
Miami Beach, FL 33139, USA

URL:

<http://www.pointix.com>

Toll Free Number:

[1-888-POINTIX](tel:1-888-POINTIX)

E-mail addresses:

_ Technical Support	support@pointix.com
_ Sales	sales@pointix.com
_ General Feedback	feedback@pointix.com
_ Press Releases and Investing Information	press@pointix.com
_ Developers	development@pointix.com
_ Trade Shows	events@pointix.com

