

ĵiÄŠT—v
Æ°½p,É%ž,ı,é“Á’ŷ
ÖÆ°,İ□□—

œĭÄŠT—v

@- {f\ftfg, íAMicrosoft Access 2.0/95/97/2000/2002
, Åĭĭ¬, μ, ½ff [f^fx [fX, ðÅ“K%»;, é, ±, Æ, Æ, Å, «, Ü, ·B, Ü, ½AMicrosoft Access
2.0/95/97 , Åĭĭ¬, μ, ½ff [f^fx [fX, ðC•œ, ·, é, ±, Æ, Æ, Å, «, Ü, ·BMicrosoft Access
, Åff [f^fx [fX, ðĭĭ¬, μ, ½Æă, ÉfÆfR [fh, ì'Ç%»Á, âíœ“™, ðJ•Ô, μ, Ä, ç
, é, ÆAff [f^fx [fX, Æ•æ'f, Æ, èŽŸ'æ, Éftf@fCfç, Æ"ì'â%»;, μ, ÄÅ“K, Èó'Ô, Å, í, È, -
, È, Å, Å, «, Ü, ·B, ±, ì, æ, æ
, Èó'μ, É, È, é, ÆfNfGfŠ [“™ ff [f^ÆŸö, É, àŽžŠÔ, Æ, ©, ©, Á, ½, èAfpftfH [f}f“fX, à
—Ž, ĭ, Å, «, Ü, ·B, »; ±, ÅA, ±, ì, æ, æ, È"ì'â%»;, μ, Ä, μ, Ü, Á, ½ff [f^fx [fX'èŠú“ì, ÈÅ“K
%»»ĭf“fefif“fXĭ, ·, é•K—v, Æ, Å, Ä, , é, ì, Å, ·B, Ü, ½A“—R Microsoft Access
, É, íĭĭ¬, μ, ½ff [f^fx [fX, ðÅ“K%»»E C•œ, ·, é, ½, Æ, ì<@“\, ð"ö, ì, Ä, ç
, Ü, ·, ÆA'N, ĭfpfRf“, É, à Microsoft Access , ÆC“fXfg [fç, Æ, Ä, ç
, é, Æ, íÆÀ, è, Ü, ì, ñB'P, È, éf%of“f^fCf€f%ofCfuf
%ofŠ“™, Åff [f^fx [fX, ðŽÀs, μ, Ä, ç, éê±, à, , è, Ü, ·B, æ, Á, ÄA- {f\ftfg, ĭfpf
fRf“, É Microsoft Access , ÆC“fXfg [fç, Æ, Ä, ç
, È, çŠÅ«», Åff [f^fx [fX (Microsoft Accessĭĭĭ¬Å“K
%»»E C•œ, ·, é, ½, Æ, ĭŠÅ«», ð'ñ<Ÿ, μ, Ü, ·B

☐œÆ°½ƒ,É%ž,|,é“Á’¥

☐E^À‘S☐«,đŠm•Ů,·,é,½,βff☐lf^fx☐lfX,đ‘¼,ì-¼‘O,ÁfRfs☐l,μ,Ä,©,ç☐Á“K
%»»,μ,Ä,ç,Ü,·☐B

☐Efff☐lf^fx☐lfX,đ☐Á“K%»»,·,éžž,É•K—v,Æ,È,éŠÂ«☐\‘z,đŽ-‘O,É’m,ç,¹,Ü,·☐B

☐E☐Á“K%»»‘O,Æ☐Á“K
%»»CEã,ìff☐lf^fx☐lfX,ìftf@fCf<fTfCfY,đ”äŠr,μ,½CE<%»Ê,đ’m,ç,¹,Ü,·☐B☐iCEã,
ĂŽQ☐Æ%»Ă☐j

☐EMicrosoft Access 2.0 / 95 / 97 / 2000 / 2002
,Ă☐i☐¬,³,é,½ff☐lf^fx☐lfX,đ☐Á“K%»»,Ă,«,Ü,·☐B

☐EMicrosoft Access 2.0 / 95 / 97
,Ă☐i☐¬,³,é,½ff☐lf^fx☐lfX,đ☐C•œ,Ă,«,Ü,·☐B

☐EMicrosoft Windows 98 / Me / NT / 2000 Professional / XP
Professional ☐ã,Ă,ì“®☐i,đŠm”F,μ,Ä,ç,Ü,·☐B

□œÖÆ°,ì□\□-

□Eì§²Ù(F)

□@□@□b

□@□@□{□|□|□{Ãp°Àp°½,ìŽw'è(A)... or (Ctrl+A)

□@□@□@□@□@□b

□@□@□@□@□@□@□{□Å“K%»'OĚã,ì”äŠr(C)... or (Ctrl+C)

□@□@□@□@□@□b

□@□@□@□@□@□@□{□%β<Ž,É□Å“K%»-”,í□C•œ,μ,½Ãp°Àp°½-¼

□@□@□@□@□@□b

□@□@□@□@□@□@□{,³,ç,Ä,«ĈEN,ì□|—¹(X)...

□EÃp°ÀŠÇ—□(M)

□@□@□b

□@□@□{□|□|□{°Ěβ°(C)...

□@□@□@□@□@□b

□@□@□@□@□@□@□{-¼'O,ì•Ī□X(R)...

□@□@□@□@□@□b

□@□@□@□@□@□@□{Ěp⁻,±⁻ìβ(B)...

□@□@□@□@□@□b

□@□@□@□@□@□@□{□í□œ(D)...

□Eμìβ¼®Ý(O)

□@□@□b

□@□@□{□|□|□{Û°p,ì•\Ž!(L)

□@□@□@□@□@□b

□@□@□@□@□@□@□{ÀpìpÙ,Ø⁻,Å□|—¹(D)

□@□@□@□@□@□b

□@□@□@□@□@□@□{°œ-Ě,ì¾¼ÝÀØÝ, p(C)

□@□@□@□@□@□b

□@□@□@□@□@□@□{ìβÙĚβÃ⁻,ì□Ý'è(P)...

□EíÙìβ(H)

□@□@□b

□@□@□{□|□|□{ÄĚβ⁻,ìĈĚÝ□ö(H) or (F1)

□@□@□@□@□@□b

□@□@□@□@□@□@□{-ÚŽŸ(C)

□@□@□@□@□@□b

□@ □@□@□@□@□@□@□{Ěp°¼p®Ý□î•ň(A)...

fXfefbfv.P□`S

☐œfXfefbfv,P☐` ,S

‡@ , ,ç, ©, ¶, ß☐Afvf☐fpfefB, ì☐Ý'è, Åff☐[f^fx☐[fX, ð☐Å“K
%»», ·, é, ©☐C•œ, ·, é, ©, ð'l'ð, µ, Ä
%º, ³, ç☐B, Ü, ½☐A, » , ì☐Û, ÉŠeŽí, ìf☐fbfZ☐[fW, ³E» , ê, é, æ, x, É, ·, é, ©"Û, ©, à☐Ý'è, µ, Ä
%º, ³, ç☐B

☐Efvf☐fpfefB, ì☐Ý'è

‡A ☐Å“K%»»-” , í☐C•œ, ·, éff☐[f^fx☐[fX, ðŽw'è, µ, Ä%º, ³, ç☐B

☐Eff☐[f^fx☐[fX, ìŽw'è

‡B Microsoft Access “™☐A, ³, ç, Ä, «EN^ÈŠO, ìfAfvfŠfP☐[fVf‡f“fjftfg, Å☐Å“K
%»»-” , í☐C•œ, ·, éff☐[f^fx☐[fX, ðŠ], ç, Ä, ç, ½, ç•Ä, ¶, Ä%º, ³, ç☐B

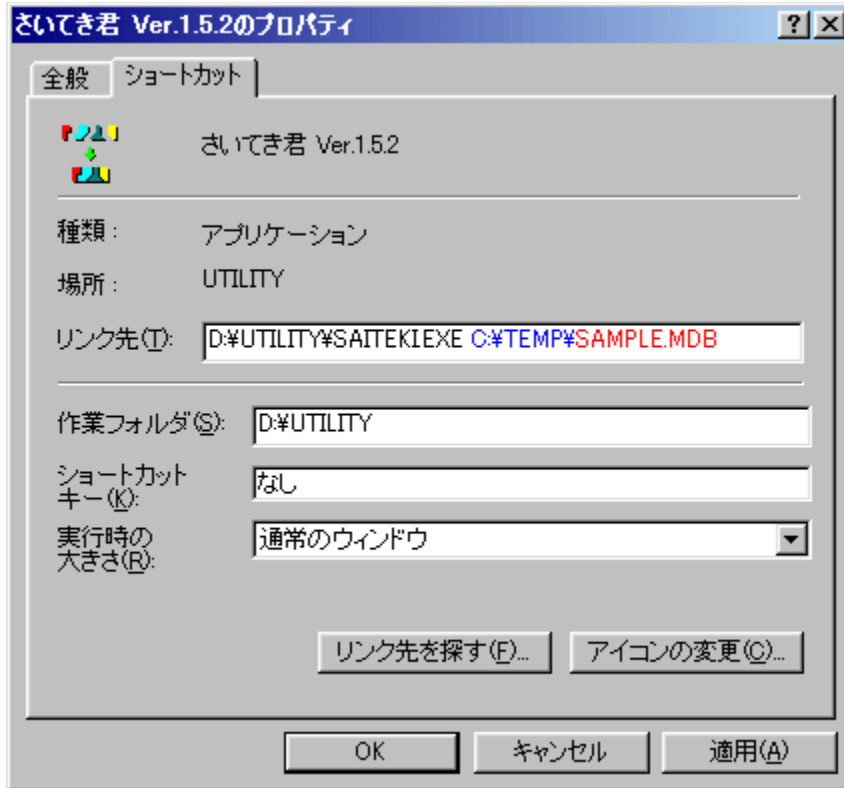
‡C ff☐[f^fx☐[fX, ð☐Å“K%»»-” , í☐C•œ, µ, Ü, ·☐B

☐œ, » , ì'¼

☐@☐í, É“~ , ¶ff☐[f^fx☐[fX, ð☐Å“K%»»-” , í☐C•œ, ·, é☐ê‡, É☐Ý'è, µ, Ü, ·☐B

‡@ , ³, ç, Ä, «EN, ìfVf‡☐[fgfjfbfgfAfcRf“ , ð%EfNfŠfbfN, µ, Ä☐Afvf☐fpfefB, ð'l'ð, µ, Ä
%º, ³, ç☐B

‡A fVf‡☐[fgfjfbfgf^fu, ð'l'ð, µ, Ä%º, ³, ç☐B



#B fŠf“fN□æ(T): ,ì%œE—““à,É<L□q,³,ê,Ä,ç,é□uD:\UTILITY\SAITEKI.EXE□v,ìCEã,ÉfXfy□[fX,ð“ü,ê,Ä□AfpfX-¼□i□ÔŽš C:\TEMP\□j,Æff□[f^fx□[fX-¼□i□ÔŽš SAMPLE.MDB□j,ð<L□q,μ,Ä%œº,³,ç□B

#C □u,n,j□vf{f^f“,ð%œÿ,μ,Ä%œº,³,ç□B

#D
 fVf#□[fgf]fbfgfAfCfRf“,ðf_fuf<fNfŠfbfN,·,é,Æ□A, ,ç,©,¶,ßŽw’è,³,ê,½ff□[f^fx□[fX,ð□Ä“K%œ»-“,ì□C•œ,μ,Û,·□B□i-^%œñ□A“~,¶ff□[f^fx□[fX,ðŽw’è,·,é•K—v,í, ,è,Û,¹,ñ□j

□j ,±,ì—á,í D:\UTILITY ,É□u,³,ç,Ä,«CEN□v,³fCf“fXfg□[f<,³,ê□AC:\TEMP,É□uSAMPLE.MDB□v,³¶□Ý,·,é□ê□¶,ðŽ!,μ,Ä,ç,Û,·□B□Ý’è,É□Û,μ,Ä,í□A,»,è,¼,ê,“Žg,ç,ìŠÄ««,É□¶,í,¹,Ä“K□Ø,É□s,Á,Ä%œº,³,ç□B

Êp°¼p®Ý± ñìß□A•ï□X
Êp. pì. ½

☐œÊþ°¼þ®Ý±`İß☐A•İ☐X

☐Ÿ Ver.1.5.2 (Date 2003/01/26)

☐Efvf#☐[fgfjfbfgfAfcfRf""™,İfvf☐fpfefB,Å☐AfŠf"fN☐æ,ì—" ,É☐i—á☐j☐usaiteki.exe
c:\temp\sample.mdb☐v,Æff☐[f^fx☐[fX-¼,ð<L☐q,·,é,±
,Æ,Å☐A☐í,É"~,¶ff☐[f^fx☐[fX,ð☐Å"K%»»,Å,«,é<@"\,ð'Ç
%»Á,μ,Û,μ,½☐B☐iŽ©"®ŽÀ☐s%»Å"\☐j

☐Efvfjf...☐[☐uİ\$²Ù(F)☐v,ì%»º,É☐A%»ß<Ž,É☐Å"K
%»»—" ,Í☐C•œ,ðŽÀ☐s,μ,½ff☐[f^fx☐[fX-¼,ì—š—ð,ð•\Ž!,μ☐A'ì'ð,Å,«,é<@"\,ð'Ç
%»Á,μ,Û,μ,½☐B

☐EMicrosoft Access 2.0/95/97 ,Å☐ì☐¬,³,ê,½ff☐[f^fx☐[fX,ì☐C•œ<@"\
,ð•œŠ^,³,¹,Û,μ,½☐B

☐Ÿ Ver.1.2.2 (Date 2003/01/01)

☐Efvf☐[f^fx☐[fX,ð☐C•œ,μ,æ,κ,Æ,·,é,ÆfGf%»☐[f☐fbfZ☐[fW,ªE»»,ê,Ä☐C•œ,Å,«,È,ç
,½,ß☐A- {<@"\,Í"~•ª,ìŠÔ,»»,ì"®☐ì,ªŠm"F,Å,«,é,Û,Å'âŽ~ ,μ,Û,μ,½☐B

☐E☐ÅCEã,É☐Å"K%»»,μ,½ff☐[f^fx☐[fX,ì'¶☐Ý,·,éftfHf<f_,ð<L%»¯,·,é<@"\,ð'Ç
%»Á,μ,Û,μ,½☐B

☐EfvfŠfWf#f"fif"fo☐[,ð'Ç%»Á,μ,Û,μ,½☐B

☐Ÿ Ver.1.2 (Date 2002/07/10)

☐EŽQ☐Æ,μ,Ä,ç,é Microsoft DAO Object Library ,İfo☐[fWf#f" ,ð 3.6 ,É•İ☐X,μ
Microsoft Access 2000 / 2002 ,Å☐ì☐¬,³,ê,½ff☐[f^fx☐[fX,à☐Å"K%»»,Å,«,é,æ,κ
,É,μ,Û,μ,½☐B

☐Ÿ Ver.1.1 (Date 2002/05/12)

☐Efvfjf...☐[☐uİ\$²Ù(F) ☐Ë Åþ°Áþ°½,ìŽw'è(A)... or (Ctrl+A)☐v,É•İ☐X,μ,Û,μ,½☐B

☐E☐Å"K%»»'OCEã,İftf@fcf<fTfCfY,ð"äŠr,μ,½☐î•ñ,ð•\Ž!,·,é<@"\,ð'Ç
%»Á,μ,Û,μ,½☐B

☐Efvfjf...☐[☐uİ\$²Ù(F) ☐Ë ☐Å"K%»»'OCEã,ì"äŠr(C)...☐v,ð'Ç%»Á,μ,Û,μ,½☐B

☉œÊþ, þì” , ½

☉@”»-¾,µ,Ä,ç,é”íí,Å^È%º,ìfofO,ª, ,è,Û,µ,½☉B’å•ïA,²-
Å~f,ð,¨,©,¨’v,µ,Û,µ,½,±,Æ,ðA,±,±,É☉[,¨,¨¨l,Ñ☉\,µ☉ã,º,Û,·☉B☉fm()m☉,,

☉ÿ Ver.1.5.2 (Date 2003/01/26)

☉Efo☉[fWfþ”☉î•ñ,Éœë,è,ª, ,è,Û,µ,½☉B

☉ÿ Ver.1.2.2 (Date 2003/01/01)

☉Efff☉[f^fx☉[fX,ð☉C•œ,µ,æ,κ
,Æ,·,é,Æ☉uŽw’è,µ,½ff☉[f^fx☉[fX,ª’¶☉Ý,µ,Û,¹,ñ☉B’¶☉Ý,ðŠm”F,µ,Ä
%º,³,ç☉B☉v,ÆfGf%º☉[f☉bfZ☉[fW,ªœ» ,ê,Ä☉A☉C•œ,Å,« ,Û,¹,ñ,Å,µ,½☉B

☉Efrfs☉[☉A-¼’O,ì•ïX”™ ,ðŽÀ☉s,·,é☉ê☉þ☉A,³,ç,Ä,«œN,ì•Û’¶☉æ,ì☉
%ºŠú☉Ý’è,ª☉A,³,ç,Ä,«œN,ð<N”® ,µ,Ä,ç,éftfHf<f_ ,É,È,Á,Ä,ç,È,ç,±,Æ,ª, ,è,Û,µ,½☉
B

☉ÿ Ver.1.2 (Date 2002/07/10)

☉E“Á,É,È,µ☉B

☉ÿ Ver.1.1 (Date 2002/05/12)

☉E“Á,É,È,µ☉B

ŠJ"ŠÂ<<
"®ïŠm"FŠÂ<<
•K—vŠÂ<<
□U□xİ¼°YŠÂ<<

☐œŠJ”ŠÂ<<

☐EOS ☐F“ú- {Œê Microsoft Windows 98 Ver.4.10

☐EŒ¾Œê☐FVisual Basic Professional Edition Ver.6.0 (SP5)

☐Eï¼°Ÿ☐FGateway GP7-500 (%ü) P3-850 (Up to 1015MHz)

☐œ“®☐ìŠm”FŠÂ<<

☐EOS ☐F“ú-☐{œê Microsoft Windows 98 Ver.4.10☐iSE ,Í-çŠm”F☐j

☐@☐@ ☐F“ú-☐{œê Microsoft Windows Me

☐@☐@ ☐F“ú-☐{œê Microsoft Windows NT Workstation 4.0 (SP6a)

☐F“ú-☐{œê Microsoft Windows 2000 Professional (SP3)

☐@☐@ ☐F“ú-☐{œê Microsoft Windows XP Professional (SP1)

☐E<@Ží☐FGateway GP7-500 (%oü) P3-850 (Up to 1015MHz) , SOTEC PC STATION G3101AVX (Microsoft Windows Me ²Ý½Ä°Û)

☐œ•K—vŠÂ««

☐EVisual Basic Ver.6.0 ,ìf%of“f^fCf€f%ofCfuf%ofŠ☐AŠeŽí☐A*.DLL☐A*.OCX
ftf@fCf<☐i,» ,ê,¼,ê☐AVer.6.0 SP5 ,É‘í%ož,μ,½,à,í,ª•K—v,Å,·☐j

☐i -{f}ftfg,í☐A32bit fR☐[fh,Å☐i☐¬,μ,Ä,ç,Ü,·,ì,Å☐AMicrosoft Windows 3.1
☐ã,Å,í“®☐ì,μ,Ü,¹,ñ☐B,Ü,½☐A3.1 ☐ã,É Win32s ,đ“±“ü,μ,Ä,ç,é☐ê☐‡,Å,à“—
l,É“®☐ì,μ,Ü,¹,ñ,ì,Å,²’☐^Ó%oº,³,ç☐B

☐œ☐Ú☐×İ¼°ÝŠÂ<<<

☐ECPU ☐FIntel Pentium!!! 850MHz (Coppermine core)

☐EM/B ☐FABIT SH6

☐EChipSet☐FIntel 815E

☐EBIOS ☐FAWARD

☐EFSB ☐F119.52MHz (Base FSB 100MHz)

☐ERAM ☐F384MB

☐@☐@☐@☐@ ☐F256MB SDRAM DIMM 168pin PC133 CL=2

☐@☐@☐@☐@ ☐F128MB SDRAM DIMM 168pin PC100 CL=3

☐EGraphic☐FAOpen PA256MX Plus (nVIDIA GeForce2 MX) (32MB)

☐EAudio ☐FAC'97 ,QÁ→ÝÈÙ Audio CODEC “<☐Ú (On Board)

☐EHDD ☐FQuantum U-ATA100 60GB 7,200rpm (Quantum AS60.0)

C:\ 10GB (FAT32) Microsoft Windows 98 (SP1)

D:\ 25GB (FAT32) Application soft & Data

E:\ 5GB (NTFS5) Microsoft Windows NT Workstation 4.0 (SP6a)

F:\ 10GB (NTFS5) Microsoft Windows 2000 Professional (SP3)

G:\ 10GB (NTFS5) Microsoft Windows XP Professional (SP1)

☐ECD-R/RW☐FRICOH 24/6/4 ”{‘→ Buffer☐F256K (MP7060A)

☐ECD-ROM ☐FMithumi 32”{‘→ Buffer☐F256K

☐EFD ☐F1.44MB/720KB ,Qmode ‘İ%ž

☐ENetWork☐FPLANEX (FNW-9702-T/T3 PCI Fast Ethenet Adapter)

☐ECase ☐FGateway ☐» İÙÀÜ°¹¹½

☐E“dœ¹ ☐FATX <KŠİİ°ž“dœ¹ (200V)

☐İ ,à,Æ,à,Æ Gateway GP7-500 ,Æ,ç,ıf}fV☐[f“ ,đfx☐[fX,É,μ,Ä,ç
,Ü,·☐B☐Â•İŽš,İfn☐[fhfEjFfA,İ,Ý☐w“üŽž,İ☐ó’Ô,İ,à,İ,Â,·☐B

Ãp°Àíp°½,ìžw'è

□Å“K%»'OŒã,ì”äŠr

%oß<ž,É□Å“K%»-”,í□C•œ,µ,½Ãp°Àíp°½-¼

,³,ç,Ä,«ŒN,ì□|—¹

☐œÃƆ°ÀÍƆ°½,ìŽw'è

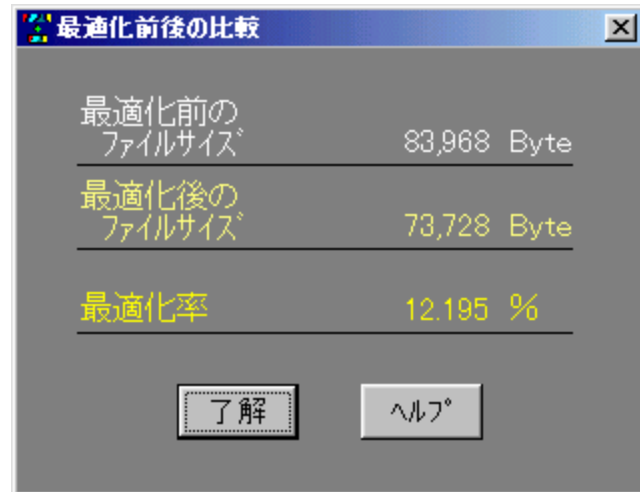
‡@ f[]ff...☐[☐uì\$²Ù(F) ☐Ë ÆƆ°ÀÍƆ°½,ìŽw'è(A)...☐v-”,í☐uCtrl+A☐v,ð'I'ð,µ,Ä
%oº,³,ç☐B☐iff☐[f^fx☐[fXŽw'è%oæ-Ê,ªCE»,ê,Û,·☐j

‡A ☐Å“K%o»-”,í☐C•œ,µ,½,çff☐[f^fx☐[fX,ðŽw'è,µ☐uŠ],☐vf{f^f“,ð%oÿ,µ,Ä
%oº,³,ç☐B

最適化前後の比較

最適化前のファイルサイズ 83,968 Byte

最適化後のファイルサイズ 73,728 Byte



最適化率 12.195 %

最適化前のファイルサイズ 83,968 Byte

最適化後のファイルサイズ 73,728 Byte

最適化率 12.195 %

□œ%œβ<Ž,É□Å“K%œ»-”,Í□C•œ,μ,½ÃP°ÀÍP°½-¼

‡@ f□fCf“%œ-Ê,ìf□ffj...□[□uì§²Ù(F)□v,đ‘l’đ,μ,Ä%œ°,³,ç□B

‡A □Å“K%œ»-”,Í□C•œ,·,éff□[f^fx□[fX-¼,đ‘l’đ,μ,Ä□AŠJ,f{f^f“,đ%œÿ,μ,Ä%œ°,³,ç□B

□i,P ,±,ì‘€□ì,đ□s,æ,Æ□A□f□ffj...□[□uì§²Ù(F)□v^È%œ°,É—š—
đ□i,TÆÂ□j,Æ,μ,Ä“o~^,³,ê,Ü,·□B

□i,Q —š—đ,Æ,μ,Ä“½%œf,³,ê,é,ì,Í□AŽÿ%œň,É,³,ç
,Ä,«œN,đ<N“® ,μ,½Žž,©,ç,É,È,è,Ü,·□B

☐œ,³,ç,Ä,«CEN,ì☐I—¹

‡@ f☐ffj...☐[☐uì\$²Ù(F) ☐Ë,³,ç,Ä,«CEN,ì☐I—¹(X)...☐v,đ'ı'đ,μ,Ä
%°[°],³,ç☐B☐if☐fbfZ☐[fWf{fbfNfX,³CE»,é,Ü,·☐j

‡A☐u,n,j☐v—",í☐u·¬Ý³/₄Ù☐vf{f^f",đ%°ÿ,μ,Ä%°°[°],³,ç☐B

$\frac{\circ\ddot{E}\beta^\circ}{-1/4'O,i\cdot i\Box X}$
 $\frac{\hat{E}P_{\pm}\hat{I}\beta}{\Box i\Box \alpha e}$

☐œ°Ëß°

‡@ f[]ff...[][[]uÃP°À,ÌŠÇ—[](M) ☐Ë °Ëß°(C)...[]v,ð'ì'ð,μ,Ä
%°°°,³,☐[]B[]iff[]f^fx[]fX,ì^ê—,ªCE»,ê,Ü,·[]j

‡A ff[]f^fx[]fX,ð'ì'ð,μ[]uŠJ,[]vf{f^f“,ð%°ÿ,μ,Ä%°°°,³,☐[]B

‡B 't%°>,lfefLfXfgf{fbfNfX,ì't,Éff[]f^fx[]fX-¼,ð“ü—í,μ,Ä[]u—¹%°ð[]vf{f^f“,ð
%°ÿ,μ,Ä%°°°,³,☐[]B



☐@[]! ·ª,©,ç,È,☐,±,Æ,ª”[]¶,μ,½Žž,í[]Afwf<fvf{f^f“[]i,R,Â, ,éf{f^f“,ì,α
,¿%°E'[,lf{f^f“[]j,ð%°ÿ,μ,Ä%°°°,³,☐[]B[]i,±,lfwf<fv,ª•\Ž!,³,ê,Ü,·[]j

☐œ-¼'O,ì•ï☐X

‡@ f☐ffj...☐[☐uÃP°À,ìŠÇ—☐(M) ☐Ë -¼'O,ì•ï☐X(R)...☐v,đ'l'đ,μ,Ä
%°³,☐☐B☐iff☐[f^fx☐[fX,ì^ê—,ªCE»»,ê,ê,Ü,·☐j

‡A ff☐[f^fx☐[fX,đ'l'đ,μ☐uŠJ,☐vf{f^f“,đ%°ÿ,μ,Ä%°³,☐☐B

‡B '+%°>,ìfefLfXfgf{fbfNfX,ì't,Éftf@fCf<-¼,đ“ü—í,μ,Ä☐u—¹%°đ☐vf{f^f“,đ
%°ÿ,μ,Ä%°³,☐☐B



☐@☐! •ª,©,ç,È,☐,±,Æ,ª”☐¶,μ,½Žž,í☐Afwf<fvf{f^f“☐i,R,Â, ,éf{f^f“,ì,α
,¿%°E'[,ìf{f^f“☐j,đ%°ÿ,μ,Ä%°³,☐☐B☐i,±,ìfwf<fv,ª•\Ž!,³,ê,Ü,·☐j

⊠œÊƒ, ±`ìß

‡@ f[]fj...[][[]uÃƒ°À, ÌŠÇ—[](M) []Ë Êƒ, ±`ìß(B)...[]v, ð'ì'ð, μ, Ä%°°, ³, ç[]B

‡A ft[]fbfs[][fffBfXfN, ðft[]fbfs[][fhf%ofCfu, ÉfZfbfg, μ, Ä%°°, ³, ç[]B

‡B ft[]fbfs[][fffBfXfN, ðfZfbfg, μ, ½, ç[]u, n, j[]vf{f^f“, ð%°ÿ, μ, Ä%°°, ³, ç[]B

í

ff...[uãp°à,ìšç—(M) Ě í(D)...v,đ'í'đ,μ,Ä%°³,çBiff[f^fx[fX,ì^ê—,ªE»ê,Û,·j

A ff[f^fx[fX,đ'í'đ,μuŠj, vf{f^f“,đ%ÿ,μ,Ä%°³,çB

B 'í'đ,μ,½ff[f^fx[fX,đíœ,·,éê#,Íu,n,j vf{f^f“,đ%ÿ,μ,Ä%°³,çB

Ū°p,ì•\Ž!
ÀPÌPÙ Ø̄,À□I—¹
%oæ-É,ì³/₄YAØY, p
ÌSÛÊBǞ,ì□Y'è

☐œÛ°ƒ,ì•\Ž!

‡@ fffjf...☐[☐uμìß¼®Ý(O) ☐Ë Û°ƒ,ì•\Ž!(L)☐v,đ%œÛ,μ,Ä☐Af☐ffjf...☐[,ì☐¶'œ
,ìf`fFbfN,đ,n,m☐ifœ,ì•t,ç,½☐ó'Ô☐j,Û,½,Í☐A,n,e,e☐ifœ,ì•t,ç,Ä,ç
,É,ç☐ó'Ô☐j,É☐Ý'è,μ,Ä%œ°³,ç☐B☐i<N“®Žž,ìÛ°ƒ,ì•\Ž!,Û,½,Í”ñ•\Ž!,É☐Ý'è,Ä,«,Û,·☐j

☐! ☐%œ,ß,Ä☐u,³,ç,Ä,«œN☐v,đ<N“® ,μ,½Žž,Í☐uÛ°ƒ,ì•\Ž!☐v☐ifœ,ì•t,ç
,½☐ó'Ô☐j,É☐Ý'è,³,è,Ä,ç,Û,·☐B

ÀÒÙ,Ø,Å|—¹

‡@ fffj...[uµìß¼®Ý(O) È ÀÒÙ,Ø,Å|—¹(D)v,ð%ÿ,µ,ÄAfffj...[,ì¶'æ
,ì`fFbfN,ð,n,mifCE,ì•t,ç,½ó'Ôj-“,í,n,e,eifCE,ì•t,ç,Ä,È,çó'Ôj,ÉY'è,µ,Ä
%º,³,çBifCf“%æ-Èã,ðÀÒÙ,Ø,.,é,ÆA,³,ç,Ä,«EN,ð|—¹,Å,«,é,æ,æ
,ÉY'è,Å,«,Û,·j

¡; %º,ß,Äu,³,ç,Ä,«ENv,ð<N“® ,µ,½Žž,íuÀÒÙ,Ø,Å|—¹,·,évifCE,ì•t,ç
,½ó'Ôj,ÉY'è,³,ê,Ä,ç,Û,·B

☐œ%œ-Ê,ì¾¼ÝÀØÝ, Þ

‡@ f[]fjf...[][]uμìß¼®Ý(O) ☐Ë %œ-Ê,ì¾¼ÝÀØÝ, Þ(C)☐v,ð%œÿ,μ,Ä☐Af[]fjf...[][,ì[]¶'æ
,ìf`fFbfN,ð,n,m☐ifœ,ì•t,ç,½☐ó'Ô☐j-" ,í,n,e,e☐ifœ,ì•t,ç,Ä,ç,É,ç☐ó'Ô☐j,É☐Ý'è,μ,Ä
%œ^{0,3},ç☐B☐if[]fCf""œ-Ê""™ ,ðŽ©—R,È^Ê'u,É☐Ý'è,Å,«,Û,·☐j

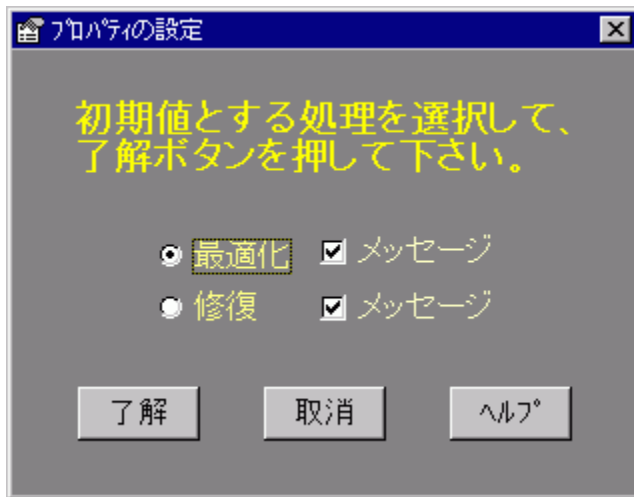
☐; ☐%œ,ß,Ä☐u,³,ç,Ä,«œN☐v,ð<N" ® ,μ,½Žž,í☐u%œ-Ê,ì¾¼ÝÀØÝ, Þ☐v☐ifœ,ì•t,ç
,½☐ó'Ô☐j,É☐Ý'è,³,è,Ä,ç,Û,·☐B

☐œìßÛÊßÃ¨,ì☐Ý'è

‡@ f☐ffj...☐[☐uμìß¼@Ý(O) ☐Ë ìßÛÊßÃ¨,ì☐Ý'è(P)...☐v,ð'ì'ð,μ,Ä
%º,³,☐☐B☐ìßÛÊßÃ¨,ì☐Ý'è%ºæ-Ê,ª☐☐»»,è,Û,·☐j

‡A ☐u☐Å“K%º»☐v-”,í☐u☐C•œ☐v,ì,Ç,¿,ç,©,ð'ì'ð,μ,Ä
%º,³,☐☐B,Û,½☐A,»»,ì☐Û,ÉŠeŽí,í☐f☐bfZ☐[fW,ð•\Ž|,;é,©”Û,©,ì☐Ý'è,à☐s,Á,Ä
%º,³,☐☐B☐if☐☐,ì•t,☐,½☐ó'Ô,í☐f☐bfZ☐[fW,ð•\Ž|,μ,Û,·☐j

‡B ☐u—¹%ºð☐vf{f^f”,ð%ºÿ,μ,Ä%º,³,☐☐B



☐; ☐%º,ß,Ä☐u,³,☐,Ä,«☐☐☐☐v,ð<N“@,μ,½ŽŽ,í☐u☐Å“K%º»☐v☐A☐uf☐bfZ☐[fW,ð•\Ž|,;é☐v☐if☐☐,ì•t,☐,½☐ó'Ô☐j,É☐Ý'è,³,è,Ä,☐,Û,·☐B

ÄËß_.,ìŒŸ□ö
-ÚŽŸ
ÊP°¼P®Ý□î•ň

☐œÄËß˘, ìŒÿ☐ö

‡@ f☐ffj...☐[☐uíÙìß(H) ☐Ë ÄËß˘, ìŒÿ☐ö(H)☐v-”, í☐uF1☐v, ð%oÿ, µ, Ä
%o^o, ³, ç☐B☐iÄËß˘, ìŒÿ☐ö%oœ-Ê, ^aŒ», ê, Ü, ·☐j

‡A %o^o‘x, ì˘g“à, É•\Ž!, ³, ê, Ä, ç, é ·°Ü°Äp , ðfNfŠfbfN, µ, Ä☐A•\Ž!f{f^f”, ð%oÿ, µ, Ä
%o^o, ³, ç☐B☐i•K—v, Ê☐€-Ü, ìfwf<fv, ^a•\Ž!, ³, ê, Ü, ·☐j

☐i fwf<fv%oœ-Ê, É, , é ·°Ü°Äbf^fu , ðfNfŠfbfN, µ, Ä, àŒÿ☐ö, Å, «, Ü, ·☐B

☐œ-ÚŽŸ

‡@ f☐ffj...☐[☐uíÙìß(H) ☐Ë -ÚŽŸ(C)☐v,đ%oŸ,μ,Ä%oo^o,³,¢☐B☐ifwf<fv,^oŒ» ,ê,Ü,·☐j

☐œÊƒ°¼ƒ®Ý☐î•ñ

‡@ f☐ffj...☐[☐uÍÙìß(H) ☐Ë Êƒ°¼ƒ®Ý☐î•ñ(A)...☐v,ð%œÿ,µ,Ä
%œº,³,ç☐B☐ifo☐[fWf#f"☐î•ñ%œ-Ê,ªCE»„ê,Û,·☐j

☐| Outlook Express <y,Ñ Internet Explorer ,ì'¶☐Ý,µ,Ä,ç,éfpfX,Í **Microsoft
Windows ,ð☐V<K,ÉfCf"fxfg☐lf< ,µ,½☐ê☐‡,ð'z'è,µ,Ä,ç,Û,·☐B**

☐|,P %œ-Ê☐¶%œº,ì E-Mail Address ,ð%œÿ,·,Æ Outlook Express
,ª<N"® ,µ☐u"s'±☐v^¶,Éf☐☐[f<,ð'—☐M,·,é,±,Æ,ª,Å,«„Û,·☐B

☐|,Q %œ-Ê☐¶%œº,ì URL Address ,ð%œÿ,·,Æ Internet Explorer
,ª<N"® ,µ☐u"s'±☐v,ìfz☐[f€fy☐[fW,É☐Ú'±,·,é,½,ß,ì☐Ú'±%œ-Ê,ªCE»„ê,Û,·☐B

☐|,R ,½,¾,µ☐A,»„ê,¼,ê Outlook Express <y,Ñ Internet Explorer
,ªfCf"fxfg☐lf<,³,ê,Ä,ç,È,çŠÂ««„©,ç,ì☐A- {<@"\,ðŽg,ª,±,Æ,ì☐o—^,Û,¹,ñ☐B

$$\frac{\frac{1}{4}a + 3a}{10^{3a}}$$

,,ñ,´,ñCEN Ver.3.6.2

,ç,ê,©,¡CEN Ver.1.5.0

,¨,µ,ç,¹CEN Ver.3.4.6

,¹,ç,ê,ÂCEN Ver.4.2.0

,¹,«,ª,¡CEN Ver.4.2.4

,é,æ,ê,Á,ÆCEN Ver.2.0.2

☐œ, ,ñ, ´, ñĈEN Ver.3.6.2

☐@☐|,ª☐¶Š^,µ,Ä☐s,☐ã,Å☐u'«,µŽZ☐A^ø,«ŽZ☐A<ã<ã☐AŠ|
, -ŽZ☐AŠ,,,èŽZ☐A☐A"i☐Å,ð☐|—¶,µ,½Š|, -ŽZ☐v,ì•K—v☐«,í'½☐X, ,é,à,ì,Å,·☐B—
á,ì,ì☐A"f,ç•" ,ìŽŽ,È,Ç,Í—Ç,çŽ—
á,Å,µ,â,☐B,µ,©,µ☐AZ,,,½,¿,íŽÀ☐Û,ÉŽ©•ª,ì"ª,ðŽg,Á,ÄĈvŽZ,·,é<@
%oi,ª☐A"d`ì,ì•☐<y,àŽè" ,Á,Ä^ÓŠO,ÆĈ, ,Á,Ä,ç,é,ì,Å,Í,È,ç,Å,µ,â,☐,©☐H☐@,©,-
Ĉ¾,☐u, ,ñ, ´, ñĈEN☐v,ìŠj"ŽÒ,Å, ,é"s'±
,à☐A,½,Û,ÉŽ©•ª,Å☐u'«,µŽZ☐A^ø,«ŽZ☐AŠ|, -ŽZ☐AŠ,,,èŽZ☐v,È,ñ,Ä,â,ë,☐
,à,ì,È,ç☐AZŽŠÔ,ª,©,©,Á,Ä,©,©,Á,Ä☐E☐E☐E☐B(^_^;) Å»¹Å²
☐@,»,±,Å☐AĈvŽZ—Í,ð—{,☐,±,Æ,ð-Ú"l,É—{f\ftfg☐u, ,ñ, ´, ñĈEN☐v,ðŠj"-
,µ,Û,µ,½☐B;Ĉã,ìŠj"ŽÒŽ©,ç☐A,±,ìf\ftfg,ÅĈvŽZ—Í,ð—{,☐,Å,à,è,Å,·☐B(^_^;) ÅĈĈ

☐@nifty☐ifVfFfAfeFfFA'—<à"Ô☐†☐F11003☐j

☐EFGALAP☐@LIB #8☐@ Win☐yMES06☐z%oÆĈv•ë/<³^ç/À²ìßÄÚ°Å/<Æ-± 2

☐EFWINAC☐@LIB #10☐@WINDOWS software☐s -ù%oð,Èf\ftfg☐I ☐t

☐EFWINNT☐@LIB #3☐@ WINDOWS NT software☐sfAfvfŠfP☐[fVf#f"☐t

☐EFCAl☐@ LIB #7 ☐sCAI SOFT☐tŽ©☐ì<³^ç for Windows

☐@Home Page☐ifxfNf^☐[☐☐ifĈfW☐ì•i"Ô☐†☐FSR19080☐j

☐E<http://www.vector.co.jp/soft/win95/edu/se155251.html>

☐@Home Page☐iDownload ASCII☐j

☐E<http://download.desk.ne.jp/win/2/00027/5403.html>

☐@Home Page☐i"s'±☐j

☐E<http://homepage3.nifty.com/nao-chan/>

☐@fĈfWfXfg—¿<à

☐E\1,200

☐œ,ç,ê,©,;|CEN Ver.1.5.0

☐@,ç,ê,©,;|CEN,í☐A☐À☐È,ì☐#”Ô,đ’ñ<ÿ,;é,½,ß,ÉŠJ” ,đ,μ,½,à,ì,Å☐A”- ,¶,-
☐É☐# ,đ’ñ<ÿ,;é,½,ß,í\ftfg,Å, ,é☐u,¹,«,ª,;|CEN☐v,ì☐ã^Ê,ífo☐[fWf#f” ,É, ,½,è,Ü,·☐B—~
—pŠÂ««,Æ,μ,Ä,ÍŽå,Éfp☐[fgf^fCf}☐[,âfA f<fofCfg”™ ,ª☐A’â☐”i100☐I☐j” , ,æ,æ,
È☐ó<μ☐i☐H☐ê,í%ofCf”™☐j,đ’z’è,μ,Ä,ç,Ü,·☐B’A,μ☐A”Ä—p☐«,đŽ☐,½,¹,é-
Ú”I,©,ç☐A,»,ì¹¼,ÌŠJ”ŽÒ,ª’z’è,μ,Ä,ç,É,çŠÂ««☐ifNf%ofX☐I☐” ,ì¹½,ç’åŠw”™☐j,É, ,ç,
Ä,à,»,íj☐[fY,É%ž,ì,ç,ê,é,æ,æ,ÉŠJ” ,đ☐s,Ä,Ä, ,è,Ü,·☐B☐]—^ ,©,ç,ì,¹,«,ª,;|CEN,Æ”-
—I,É☐A,í, ,© 10 •b,Å,¹,«☐# ,đCE^ ,ß,é,±,Æ,ª,Å,« ,Ü,·☐B

☐@@nifty☐ifVfFfAfEfFfA’—<à”Ô☐+☐F,È,μ☐j

☐EFWINNT☐@LIB #3☐@ WINDOWS NT software☐sfAfvfŠfP☐[fVf#f”☐t

☐EFWINAC☐@LIB #10☐@WINDOWS software☐s -ù%ö,É\ftfg☐I ☐t

☐EFGALAP☐@LIB #8☐@ Win☐yMES06☐z%oÆCEv•ë/<³^ç/À²ìßÄÚ°Å/<Æ-± 2

☐@Home Page☐ifxfNf^☐[☐j☐ifCEfW☐i•i”Ô☐+☐FSR032849☐j

☐E<http://www.vector.co.jp/soft/win95/business/se197862.html>

☐@Home Page☐iDownload ASCII☐j

☐E<http://download.desk.ne.jp/win/2/00028/5404.html>

☐@Home Page☐i“s’±☐j

☐E<http://homepage3.nifty.com/nao-chan/>

☐@fCEfWfXfg—¿<à

☐E\1,500

☐œ,¨,µ,ç,¹CEN Ver.3.4.6

☐@,¨,µ,ç,¹CEN,Í☐A☐Ý'è,³,ê,½"ú,É,È,é,Æ☐A<ß☐X,ÉfCxf"fg,ª"☐¶,·,é,±
,Æ,ð☐u,¨,µ,ç,¹☐v,µ,Ä,,ê,é\ftfg,Å,·☐B,æ☐` ,ñ☐@,È,ñ,¾,©☐A•ª,©,é,æ,æ,
,È•ª,©,ç,È,ç,æ,æ,É☐E☐E☐E☐B(^_^;))
,» ,ê,Å,Í<í"l,È—á,Å☐à-¾,µ,Ü,µ,ã,æ☐B(^_^)☐^
☐@—á,¡,Í☐A2003"N 2CEŽ 2"ú,ª☐A, ,È,½,Ì'a☐¶"ú,¾,Æ,µ,Ü,·☐B,» ,µ,Ä☐A,» ,Ì 32
"ú'O☐i"C^Ó,É"ú☐",ð☐Ý'è%oÅ☐A,Ü,½fjfCef"f_☐[CE`Ž® ,É,æ,è☐A2003"N 1CEŽ
1"ú,Æ☐Ý'è,·,é,±,Æ,à%oÅ☐j,É☐u2003"N 2CEŽ 2"ú,ª'a☐¶"ú,Å, ,é☐v,Æ,ç,æ,±
,Æ,ð☐u,¨,µ,ç,¹☐v,µ,Ä,,ê,Ü,·☐B(^_^)

☐@@nifty☐ifVfFfAfEfFfA'—<à"Ô☐t☐F10568☐j

☐EFGALAP☐@LIB #3☐@ Win☐yMES03☐z½¹¼p°Ü/"ú<L/±ÄpÚ½/CEÂ☐l☐î•ñ

☐EFWINNT☐@LIB #3☐@ WINDOWS NT software☐sfAfvfŠfP☐[fVf†f"☐t

☐EFWINAC☐@LIB #5 ☐@WINDOWS software☐s ŽžCEv☐^fjfCEf"f_ ☐t

☐@Home Page☐ifxfNf^☐[☐j☐ifCEfW☐ì•i"Ô☐t☐FSR016171☐j

☐E<http://www.vector.co.jp/soft/win95/personal/se129067.html>

☐@Home Page☐iDownload ASCII☐j

☐E<http://download.desk.ne.jp/win/2/00021/5405.html>

☐@Home Page☐i"s'±☐j

☐E<http://homepage3.nifty.com/nao-chan/>

☐@fCEfWfXfg—<à

☐E\700

☐œ,¹,ç,ê,ÂĈEN Ver.4.2.0

☐@,¹,ç,ê,ÂĈEN,ÍfL☐[f{☐[fh,©,ç“Á’è,ì’g,Ý☐‡,¹,ÌfL☐[,ð
%oÿ,µ,½,è☐AfAfcRf”,âfXf^☐[fgf{f^f”,ð%oEfNfŠfbfN,·,é,±
,Æ,ÂfEfBf”fhfE,ð☐AMicrosoft Windows ,Á,Í•s%oÂ”\,È•À,x•û,Á☐®—☐,·,é,±
,Æ,ª,Á,«,Ü,·☐B—á,ì,Î☐AfffXfNfgfbfv☐ã,É,S,Â,ÌfEfBf”fhfE,ª\Ž,³,ê,Ä,ç
,é☐ê☐‡☐A’É☐í☐AMicrosoft Windows ,Á,Í“c,ÌŽŠ,É•À,x,Ä☐®—☐,³,ê,Ü,·,ª☐A,¹,ç
,ê,ÂĈEN,Í’S,Ä,ð☐cĈ^,â%o;Ĉ^,É•À,x,Ä☐®—☐,·,é,±
,Æ,ª,Á,«,Ü,·☐B•;☐”,ÌfEfBf”fhfE,ª•À,x,Ä☐®—☐,³,ê,Ä,ç,ê,Î☐A%oæ-
É,àfXfbfLfŠ,µ,Ä☐ì<ÆĈø—ì,àfAfbfv,µ,Ü,·☐B,¨,Ü,¯,ì<@”\,Æ,µ,ÄŽžŠÔŽw’è,É,æ,è
Windows ,ð☐l—¹,µ☐Afvfffbfgf_fEf”,Á,«,é<@”\,à, ,è,Ü,·☐B

☐@nifty☐ifVfFfAfEfFfA’—<à”Ô☐†☐F,È,µ☐j

☐EFGALTLA LIB #6 ☐yf\ftfg☐z ì³½Â°Ù/ºpĐ” /Ãp½,Ä`ìßÕ°Ã¨ØÃ”

☐EFWINAC☐@LIB #8☐@ WINDOWS software ☐sfffXfNfgfbfvŠÂ,P

☐EFWINNT☐@LIB #3☐@ WINDOWS NT software☐sfAfvfŠfP☐[fVf‡f”☐t

☐@Home Page☐ifxfNf^☐[☐j☐ifĈfW☐ì•i”Ô☐†☐FSR026498☐j

☐E<http://www.vector.co.jp/soft/win95/util/se218490.html>

☐@Home Page☐iDownload ASCII☐j

☐E<http://download.desk.ne.jp/win/1/00006/5406.html>

☐@fĈfWfXfg—¿<à

☐E\700

☐œ,¹,«,ª,¡☐EN Ver.4.2.4

☐@1996"N11☐Ž29"ú,Éfffrf...☐[μ,½☐u,¹,«,ª,¡☐EN☐iftfŠ☐[f\ftfg"Å☐j☐v,lfVfFfAfEfFfA"Å☐u,¹,«,ª,¡☐EN☐v,Å,·☐B(*^_^*)
ftfg,ì"à—e,í☐A☐]—^,ì,¹,«,ª,¡☐EN,É☐X,É,é☐{fz☐i'j☐—•É,ì—ñ,ì☐Y'è"™☐j,ì<@"\
,đ☐·,è☐ž,ñ,Å☐A,¹,«☐#,'đ'ñ<Y,μ,Ü,·☐B☐u,¹,«,ª,¡☐v,Å,Ä,ç,Â,àfKf,,fKf,,',ª,μ,-
☐#”Ô,đ☐Ď^,β,Ä,ç,Ü,·,æ,É☐B(^_~;) ;
,» ,ì,æ,α,É☐ó<μ,đ☐A,ç,Æ,àŠÈ'P☐i10 •b^È"à☐j,É☐A,» ,μ,Ä☐Ä,©,É☐o—^ ,é,æ,α
,É,ÆŽv,ç-{f\ftfg,đŠj” ,μ,Ü,μ,½☐B(^_~^)

☐@@nifty☐ifVfFfAfEfFfA'—<à"Ô☐+☐F10757☐j

☐EFGALAP☐@LIB #8 Win☐yMES06☐z%œÆ☐Ev•ë/<³^ç/À²ìβÄÜ°Å/<Æ-± 2

☐EFWINAC☐@LIB #10☐@WINDOWS software☐s -ù%œđ,Éf\ftfg☐I ☐t

☐EFWINNT☐@LIB #3☐@ WINDOWS NT software☐sfAfvfŠfP☐[fVf#f"☐t

☐EFCAI☐@ LIB #11 ☐sCMI SOFT☐t☐-☐Ñ/☐Z-±☐^—☐ for Windows

☐@Home Page☐ifxfNf^☐[☐j☐if☐EfW☐i•i"Ô☐+☐FSR016070☐j

☐E<http://www.vector.co.jp/soft/win95/business/se138205.html>

☐@Home Page☐iDownload ASCII☐j

☐E<http://download.desk.ne.jp/win/2/00028/5407.html>

☐@f☐EfWfXfg—¿<à

☐E\1,200

☐œ,é,ꝛ,ê,Á,ÆŒEN Ver.2.0.2

☐@,é,ꝛ,ê,Á,ÆŒEN,Í☐A☐F☐X,È—p“r,ÉŽg,ꝛ,±,Æ,º%oÁ“\,Á,·☐B—á,¡,Î☐E☐E☐E☐B

☐ECase,P☐i,“‘<<x,Ý,É%o½☐^,Ì,“X,Ö☐H,x,É☐s,±,ꝛ,©-À,Á,½☐ê☐#☐j

☐ECase,Q☐i☐s,,“X,ÍŒ^,Ü,Á,Ä,ç,é,º☐A%o½,ð☐H,x,é,©-À,Á,½☐ê☐#☐j

☐ECase,R☐i,“‘|☐œ“-”Ô,ð’N,É,·,é,©-À,Á,½☐ê☐#☐j

☐ECase,S☐i,,¶^ø,«,ð☐s,ꝛ☐ê☐#☐j

☐ECase,T☐i,é,ꝛ,ê,Á,Æ,ð,P,O%oñ,Ü,í,µ,Ä•ó,,¶,à,Ç,«,Å—V,Ñ,½,ç☐ê☐#☐j

☐@“™,È,Ç☐E☐E☐E☐B,Â,Ü,è☐A•j☐”,ì☐€-Ú,ì’t,©,ç☐A—☐—R,Í,Æ,à,©,-

,P,Â,ðŒ^,ß,È,,Ä,Í,È,ç,È,ç☐I ,»ñ,ÉŽž☐u,é,ꝛ,ê,Á,ÆŒEN☐v,Í,“-ð,É—§,¿,Ü,·☐B(^_^)

☐@@nifty☐ifVfFfAfEfFfA’—<à”Ô☐+☐F,È,µ☐j

☐EFGALAP LIB #7 Win☐yMES07☐z ·P-ÝìbÙ/½Îß°Â/ŒâŠy/☐è,ç/etc

☐EFWINNT LIB #3 WINDOWS NT software☐sfAfvfŠfP☐[fVf#f“☐t

☐EFWINAC LIB #10 WINDOWS software ☐s -ù%oö,Èf#ftfg☐I ☐t

☐@Home Page☐ifxfNf^☐[☐j☐ifŒfW☐i•i”Ô☐+☐FSR020229☐j

☐E<http://www.vector.co.jp/soft/win95/game/se165238.html>

☐@Home Page☐iDownload ASCII☐j

☐E<http://download.desk.ne.jp/win/6/00044/5408.html>

☐@Home Page☐i“s’±☐j

☐E<http://homepage3.nifty.com/nao-chan/>

☐@fŒfWfXfg—¿<à

☐E\700

3,ç,Ä,«CEN Ver.1.5.2
1,«,ª,¡CEN Ver.1.9F
Ö^{-3/4}°^{1/4}¡CEN Ver.3.3

œ,³,ç,Ä,«CEN Ver.1.5.2

@-{\ftfg,í Microsoft Access 2.0/95/97/2000/2002
,Åîï¬,µ,½ff[f^fx[fX,ðÅ“K%»;,é,±,Æ,ª,Å,«,Ü,·B,Ü,½AMicrosoft Access
2.0/95/97 ,Åîï¬,µ,½ff[f^fx[fX,ðC•œ,·,é,±,Æ,ª,Å,«,Ü,·B“-‘R Microsoft
Access ,É,íîï¬,µ,½ff[f^fx[fX,ðÅ“K%»E C•œ,·,é,½,ß,ì<@“\,ð”ö,!,Ä,ç
,Ü,·,ªA’N,lfpfRf“ ,É,à Microsoft Access ,ªCf“fXfg[f<,³,è,Ä,ç
,é,Æ,íÆÀ,è,Ü,¹,ñB’P,È,éf%of“f^fCf€f%ofCfuf
%ofŠ“™ ,Åff[f^fx[fX,ðŽÀs,µ,Ä,ç,éê±,à, ,è,Ü,·B,æ,Á,ÄA-{\ftfg,lfpf\
fRf“ ,É Microsoft Access ,ªCf“fXfg[f<,³,è,Ä,ç,É,çŠÀ««,Åff[f^fx[fX(Microsoft
AccessjÅ“K%»E C•œ,·,é,½,ß,ìŠÀ««,ð’ñ<Ÿ,µ,Ü,·B

@@nifty

EFWINNT@LIB #3@WINDOWS NT softwaresfAfvfŠfP[fvf#f“t

@Home PageifxfNf^[[jifÆfWî•i”ÔtFSR024205j

E<http://www.vector.co.jp/soft/win95/business/se234507.html>

@Home PageiDownload ASCIIj

E<http://download.desk.ne.jp/win/1/00018/5472.html>

☐œ,¹,«,ª,¡CEN Ver.1.9F

☐@☐u,¹,«,ª,¡CEN☐v,ìCE³'c,Å☐A'î☐Ù☐I☐",ª 28 ☐I,Ü,Å☐A'j☐—
•É,ì,¹,«,ª,¡,ª☐s,ì,É,ç“™☐A<@“\“I,É,íftfŠ☐[fEfFfA'Š“-
,ì,à,ì,Å,·☐B☐i,Ü,Å'½☐",ìŽGŽ☐,ì•t~^ CD☐|ROM
,ÉŽû~^,³,ê☐A☐³Šm,Ěf_fEf“f☐☐[fh☐”,í'è,©,Å,í, ,è,Ü,¹,ñ,ª Vector ,ì HP ,¾,-,Å,à
7,200 CE☐^É☐ã,ì•û,©,çf_fEf“f☐☐[fh,³,ê,Ä,ç,é,æ,æ,Å,·☐B☐fm(☐)m☐,, ²±²²α
±Ø¶pÄ³²p»p²ì½j

☐@@nifty

☐EFGALAP☐@LIB #8 Win☐yMES06☐z%oÆCEv•ë/<³^ç/À²ìßÄÚ°Å/<Æ-± 2

☐EFWINAC☐@LIB #10☐@WINDOWS software☐s -ù%oõ,Ěf\ftfg☐I ☐t

☐EFWINNT☐@LIB #3☐@ WINDOWS NT software☐sfAfvfŠfP☐[fVf#f“☐t

☐EFCAI☐@ LIB #11 ☐sCMI SOFT☐t☐-☐Ñ/☐Z-±☐^—☐ for Windows

☐@Home Page☐ifxfNf^☐[☐j

☐E<http://www.vector.co.jp/soft/win95/business/se043340.html>

☐@Home Page☐iDownload ASCII☐j

☐E<http://download.desk.ne.jp/win/2/00028/5402.html>

☐@Home Page☐i“s'±☐j

☐E<http://homepage3.nifty.com/nao-chan/>

œÒ^{-3/4}°1/4PCEN Ver.3.3

œÒ^{-3/4}°1/4PCEN, íA, ", μ, ç, ¹CEN, đŠJ", , é, ÉŽŠ, Á, 1/2 • ê e, Ý, 1/2, ç, È, à, ì, ÅA, , éfCxfxf"fg, ÉCEü, , ÄA, , Æ%oo1/2"ú, , é, ©, đ•\Ž!; iŽŽCE±, È, Ç, ìê#Aup(^_^)q fKf"fofCEAfKf"fofCE, È, Ç, ìf[]fbfZ[]fW, à•\Ž!, Å, «, Ü, ·[]j, ·, é, 1/2, ß, ì\ ftfg, Å, ·B, ", μ, ç, ¹CEN, Æ^á, Å, ÄAfCxfxf"fg"ú, Ü, Å-^"úAfjEf"fgf_fEf"•\ Ž!, μ, Ü, ·B, ±, ç, ìftfg, à[]; Ü, Å'1/2", ìŽGŽ, ì•t~^ CD[]ROM , ÉŽû~^, ³, êA³Šm, Éf_fEf"fh", ì'è, ©, Å, ì, , è, Ü, ¹, ñ, ^a Vector , ì HP , ^{3/4}, , Å, à 7,000 CE^Êã, ì•û, ©, çf_fEf"fh, ³, è, Ä, ç, é, æ, x, Å, ·Bfm()m, , °p±²⁹x ±Ø¶pÄ³⁰p»p²i^{1/2};

@@nifty

EFGALAP@LIB #9@ Win[]yMES05[]zŽŽCEv/"d'ì/—i^{1/2}, Ø°Ý^{3/4}°Êp/±, ^{3/4}»Ø

EFWINNT@LIB #3@ WINDOWS NT software[]sfAfvfŠfP[]fVf#f"[]t

EFWINAC@LIB #5 @WINDOWS software[]s ŽŽCEv[]^ffCEf"f_ []t

@Home Page[]ifxfNf^[][]j

E<http://www.vector.co.jp/soft/win95/personal/se053037.html>

@Home Page[]iDownload ASCII[]j

E<http://download.desk.ne.jp/win/2/00022/1561.html>

@Home Page[]i"s'±[]j

E<http://homepage3.nifty.com/nao-chan/>

'~̀ìĈ

-ÆŌ

—~—pE"z•zđĈ

ŠJ"ŽŌ

-â‡,¹æE»îſ°Ä

ŽŌŽ«

☐œ'~☐ì☐

☐@☐u,³,☐,Ä,«☐EN☐v,É,Â,☐,Ä,ì'~☐ì☐ ,ÉŠÜ,Ü,ê,éŠe☐ —~ ,í☐AŠJ"ŽÒ,Å ,é"s'±,± ,Æ☐u☐Ó☐Í '¼Ž÷☐i , ,©,☐,μ,È," ,«☐j☐v,^a•Ú—L,μ,Ä,☐,Ü,·☐B

☐œ-Æ☐Ó

☐@,³,ç,Ä,«œN,ìŽg—p,É,æ,Á,Ä☐¶,¶,½-â'è,É'î,μ,ÄŠJ"ŽÒ,Å, ,é☐u"s'±☐v,±
,Æ☐u☐Ô☐Î '¼Ž÷☐i, ,©,ç,μ ,È,"«☐j☐v,Í☐A^ê☐Ø,ì☐Ó"C,ð•%o,ç
,Ü,¹,ñ,ì,Å☐A, ,ç,©,¶,ß,²—¹☐³%o^o,³,ç☐B

□œ—~—p□E"z•z□δCE□

□@•i□>CE □A"^^ê□«•ÛŽ□CE □A—L□ü'—□MCE "™,É,Â,ç,ÄŽŸ,ÉŽ!,μ,Û,μ,½□B

□E□u,³,ç,Ä,«CEN□v,ð'~□ìCE ŽÒ,É-³f,Å%oc—~—Ú"l,È—~—p,ð,·,é,±,Æ,Í□ACE
'¥"l,É"F,β,Ä,ç,Û,¹,ñ,^a□A,à,μ—~—p,ð,μ,½,ç□ê□‡,Í'~□ìCE ŽÒ,É'S'k,·,é,±,Æ,^a•K—
v,Ä,·□B'A,μ□AZŸ,ì,æ,α,È□ê□‡,Í—áŠO"l,É"F,β,Û,·□B

□Efpf\jRf"fVf‡bfv"™ □A"X"^a,Ä,İfff,—pfpf\jRf",ÉfCf"fXfg□[f<,μ□A^ê"Ê<q,É—~—
p,³,¹,é,±,Æ□B

□EŽGŽ□,ì•t~^,É"Y•t,·,é,±,Æ□B□i'A,μ□A'~□ìCE ŽÒ,É"Y•t,·,éŽ|,ð•ñ□□,·,é,±,Æ□j

□EŽGŽ□,â'P□s-{,È,Ç,ì□o"Å•",É□D%oi<LŽ-,ð□Ú,¹,é,±,Æ□B□i'A,μ□A'~□ìCE ŽÒ,ÉCEf
□Ú,·,é•ñ□□,·,é,±,Æ□j

□EŠé<Æ"à,Ä,ì'¼□Ú"l,È—~%ov,ð"º,í,È,ç□ê□‡,ì—~—p□B

□E□u,³,ç,Ä,«CEN□v,Æ,μ,Ä□\□¬,³,ê,½□AŠeftf@fCf<,É'î,μ,Ä,ì•ï□X□E
%ü•ï,Í□A'~□ìCE -@
'æ20□ð□i"^^ê□«•ÛŽ□CE □j,ì,Q,Å"F,β,ç,ê,½"í'í"à,ì,Ý,Æ,μ,Û,·□B,»,é^ÈŠO,ì—□—
R,É,æ,é□A•ï□X□E%ü•ï,ÍCE '¥"l,É<ÖŽ~ ,μ,Û,·□B

□E□u,³,ç,Ä,«CEN□v,É,æ,è"□¶,μ,½□A'ŠQ□Efgf%ofuf<,É,Í□A'~□ìCE ŽÒ,Í^ê□Ø,ì□Ó"
C,ð•%o,ç,Û,¹,ñ□B

□E"z•z,É,Â,ç,Ä,Í□A"z•zŽÒ,^a"z•z□s^x,É,æ,è□A'¼□Ú"l,È—~%ov,ð"³/₄,È,ç,±
,Æ,ð□δCE□□i-³□ž"z•z□A,Û,½,ÍŽÀ"i"z•z□j,ÉŽ©—R,Æ,μ,Û,·□B

□E"z•z,·,é□ê□‡,Í□ALHA.EXE ,É,æ,Á,ÄfA□[fjCfu,³,ê,½□ó'Ô,ì,Û,Û,Å□s,ç□A•ï□X□E
%ü•ï,ð□s,α,±,Æ,ð"F,β,Û,¹,ñ□B"Á•Ê,È—□—R,É,æ,è□A,Ç,α
,μ,Ä,à'¼,ìCE`'Ô,Å"z•z,μ,½,ç□ê□‡,Í□A'~□ìCE ŽÒ,É'S'k,μ,Ä%oº,³,ç□B

□E"z•z,·,é"}'ì^Žè'i□i•û-@□j,ÍŠî-{ "l,É"z•zŽÒ,ìŽ©—R,Ä,·,^a□AZŸ,ìfp□[fX,É,Â,ç
,Ä,Í"Á•Ê,È□δCE□,^a, ,è,Û,·□B

□EŽGŽ□,ì•t~^"™,É"Y•t,μ,Ä"z•z,·,é□Ú,Í□A'~□ìCE ŽÒ,É•ñ□□,^a•K—v,Ä,·□B

□E'½□",ì"z•z,ð□s,Á,½□ê□‡,â□A,»,α,È,é%oÄ"□«,^a, ,é•û-
@,ð,Æ,Ä,½□iflfbfgf□□[fN,Ó,ì"]□Ú"™ □j□ê□‡,Í□A'~□ìCE ŽÒ,É,»,ìŽ|,ì•ñ□□,ð,"Šè,ç
,μ,Û,·□B

☐œŠJ”ŽÒ

☐EÊÝÄpÙ -¼☐F“s’±

☐ECE %ot CE^☐FA CE^ (RH+)

☐E”N☐@☐@—î☐F•s☐Ú ?

☐E☐«☐@☐@•Ê☐F☐%o

☐E☐o ☐¶ ’n☐FG CE§

☐ECE» ☐Z ☐Š☐FS CE§

☐EHP ±ÄpÚ½☐F<http://homepage3.nifty.com/nao-chan/>

☐Efpj\jRf“☐F☐,☐Z☐¶,lfNf%ofuŠ^“® ,ìŽž,©,ç☐i’S,Ä,Í,±,±,©,ç☐j

☐ECEoCE±<@Ží☐FFM77-L4 , FM-16fÀ , FM-TOWNS II , FMR-60 , FMR-70 , FMV-590T , PC-8801 Mark II , PC-9801 VX , PC-9821 Xn “™☐A¼½☐”

☐ECEoCE±CE¾CEê☐FFORTRAN 77 , F-BASIC , Quick Basic , MS-FORTRAN , N88-BASIC , MS-C , Visual Basic , COBOL , VBA , Visual C++☐i•x<’†☐j

☐ECEoCE± OS ☐FCP/M , OS-9 , MS-DOS 3.1☐`3.3 , MS-Windows 3.0☐`3.1 , OS/2 , DOS/V , MS-Windows NT Server 3.51☐`4.0 , MS-Windows NT Workstation 4.0 , MS-Windows 95☐`98 , MS-Windows 2000 Professional , MS-Windows Me , MS-Windows XP Professional

☐EŽi☐@☐@-j☐F’æ,P^Ê☐@fjftfgfEjFfAŠJ”
☐@☐@☐@☐@☐@☐@’æ,Q^Ê☐@fCf“f^☐[flfbfg
☐@☐@☐@☐@☐@☐@’æ,R^Ê☐@☐...%oj
☐@☐@☐@☐@☐@☐@’æ,S^Ê☐@%o¹ŠyŠÓ☐Ü☐ižâ,É☐u☐¼”C’J—
RŽA☐v,μ,á,ň,ì<È,ð’® ,«☐A☐Å<ß,í¼,ì<È,à’® , ,æ,α,É,È,Á,½☐j
☐@☐@☐@☐@☐@☐@’æ,T^Ê☐@—☐EŽGŽ☐,ð“Ç,p

☐œ-â☐‡,¹☐æ☐E»Îß°Ä

☐@- {f\ftfg,ÉŠÖ,·,é,²^ÓŒ☐A—v-]☐A-â☐‡,¹☐AfofO☐î•ñ,Í☐AŠJ”ŽÒ,Å, ,é☐u“s’±☐v,
±,Æ☐A☐Ó☐Í ’¼Ž÷ ,Ü,Å ,d-mail ,Å, ”Šè,ç’v,μ,Ü,·☐B“Á,ÉfofO,É,Â,ç,Ä,Í☐A,È,é,x,-
☐ã^Ê,Ìfo☐[fWf‡f“,ðfŠfS☐[fX,·,é,Ü,Å,ÉftfBfNfX,·,é,æ,x“w,ß,Ü,·,ª☐u☐â^î,ÉftfBfNfX
,·,é☐I☐v,Æ,ç,xŠm-ñ,í,Å,«,Ü,¹,ñ,ì,Å☐A, ,ç,©,¶,ß,²—¹☐³%º,³,ç☐B

☐@,Ü,½☐A“®☐ìŠm”FŠÂ««,É,Â,ç,Ä,Å,·,ª☐A☐ð☐j,Í☐F☐X,ÈŠÂ««☐iWindows
98,SE,Me☐AWindows NT Workstation (SP1☐`SP6a)☐AWindows 2000
Professional☐AWindows XP Professional
“™,È,Ç☐j,ª’¶☐Ý,μ,Ü,·,ì,Å☐AŽc”O,È,ª,ç,±,ê,ç’S,Ä,ìŠÂ««%º,Å **100 %**
“®☐ìŠm”F,·,é,±,Æ,í•s%ºÄ”\,Å, ,é,±,Æ,ð☐A, ,ç,©,¶,ß,²—¹☐³%º,³,ç☐B

☐@,È, ”☐A☐u,³,ç,Ä,«ŒEN☐v,ì“®☐ìŠm”F,É,Â,ç,Ä,Í☐u“®☐ìŠm”FŠÂ««☐v,ðŽQ☐Æ,μ,Ä
%º,³,ç☐B

☐! @nifty ID ,Ö,ì’—☐M,í vef00623@nifty.ne.jp ,Æ,μ,Ä%º,³,ç☐B

☐œŽÓŽ«

☐E☐u'~☐ìCE ☐A—~—p☐E"z•z☐đCE☐☐v,ÉŠÖ,í,é
%oÓ☐Š,đŽQ☐l,É,^{3,1},Ä',,«,Ü,μ,^{1/2}☐AAKIBAMAP.HLP ,ìŠJ"ŽÒ,Å, ,é ☐í<' •¶CE' Ž☐☐i,±
,±,Ü,ÅŠJ", ,é,±,Æ,^a☐o—^,^{1/2},ç☐E☐E☐E☐j

☐E☐uf☐☐[fxfr☐[fh☐v,ì•Ò☐WŽž,É☐Af}fEfXfj☐[f\
f<,ì^Ú"® ,Å☐d•ó,^{3,1},Ä',,«,Ü,μ,^{1/2}☐ATYU32.EXE ,ìŠJ"ŽÒ,Å, ,é ☐]CEû <œ Ž☐☐iŠJ"CEø
—|,^afAfbfv,μ,^{1/2},©,à☐E☐E☐E☐j

☐E☐ufwf<fvftf@fCf<☐v,ì☐ì☐¬,É"—,^{1/2},è☐A—~—p,^{3,1},Ä',,«,Ü,μ,^{1/2}☐ASCRI.N.EXE ,ìŠJ"-
ŽÒ,Å, ,é Hata Teruaki Ž☐☐iŽèCEy,È,Æ,±,ë,^a,æ,ç☐j

☐E☐u%œ'œftf@fCf<☐v,ìCE ,☐F,É"—,^{1/2},è☐A—~—p,^{3,1},Ä',,«,Ü,μ,^{1/2}☐AGV.EXE ,ìŠJ"-
ŽÒ,Å, ,é ,Æ,Ñ,^{1/2} Ž☐☐i,±,ê,ÅftfŠ☐[fvftfg,^{3/4},È,ñ,Ä☐E☐E☐E☐j

☐E☐u,³,ç,Ä,«CEN☐v,ìŠJ",É"—,^{1/2},è☐Afpfjfrf",ÉCEü,©,Á,Ä,Î,©,è,ì'U"ß,ÉŠ°'ã,Å, ,Á,^{1/2}
%œ,³,ñ,ì☐A,ç,á,ì☐i%^{1/4-1/4}☐j,³,ñ☐i,ç,Ä,à☐A—ç—☐,đ—L"i,ç☐j

^È☐ã,ì•û☐X,É'í,μ,Ü,μ,Ä☐A,±,±,É☐[,Š'ŽÓ,ì^Ó,đ•\,μ,Ü,•☐B

