



Display Effect

Copyright (C) 1997-99 I-O DATA DEVICE, INC.

Introduction

- [About Display Effects](#)
- [Run Display Effects](#)
- [About Start Up Icon of Display Effects](#)
- [Run Start Up Icon of Display Effects](#)

Explanation of Display Effects

- [Explanation of Resolution](#)
- [Explanation of Shortcut Key](#)
- [Explanation of Cursor](#)
- [Explanation of Adjust Color](#)
- [Explanation of Other](#)

Explanation of Start Up Icon of Display Effects

- [Configuration](#)
- [Version](#)
- [Information](#)

Explanation of Marks

- : Display items on 1st level.
- : Display items on more than 2nd level.
- 95** : Explanation for Windows95.
- 98** : Explanation for Windows98.
- 9x** : Explanation for Windows95 or 98.
- NT** : Explanation for WindowsNT4.0.
- : Information you should remember.
- : Information you should be care with.

The bitmap images shown on this HELP are using the pictures of

I-O DATA's card "LCD-D15T2"

Thus, the bitmap images will be different from actual images of your card.



Display Effect

Copyright(C) 1997-99 I-O DATA DEVICE,INC.

About Display Effects

- Display Effects is a 32 bit application compatible with Windows95 and WindowsNT4.0.
- Display Effects has the function of altering resolution, setting cursors, adjusting color adjustment and much more.
- Using Display Effects, some boards can output to LCD monitor and TV.



Run Display Effects

- To startup Display Effects, click with the right mouse button on the wallpaper of
- ☞ Windows, and select "Properties". (Figure 1)
- ☞ Select the tab "Display Effects" from "Display Properties". (Figure 2)



Figure 1 : Popup menu

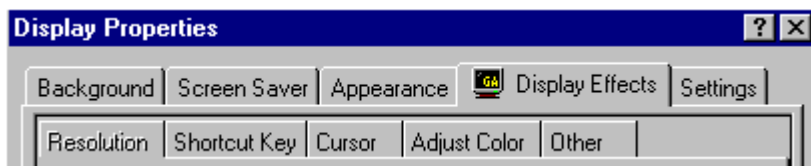


Figure 2 : Tab of Display Effects

- If you use the Start Up Icon of Display Effectson Task Tray (Figure 3),
- ☞ you can open Display Effects quickly with clicking with the left mouse button.



Figure 3 : Start Up Icon of Display Effects



About Start Up Icon of Display Effects

- Start Up Icon of Display Effects is a 32 bit application compatible with Windows95(98)
- ▣ and WindowsNT4.0.
- Making Start Up Icon of Display Effects stay resident, you can enjoy Shortcut Keys to
- ▣ use various linefunction of Display Effects.
- ▣ If you use Start Up Icon of Display Effects on Task Tray, the speed of graphics may
- ▣ sometimes slows down.



Run Start Up Icon of Display Effects

- In order to start "Start Up Icon of Display Effects", after starting Display Effects,
- ☞ select "Resolution" --> "Configuration" --> "Add to Task Tray".
- ☞ Start Up Icon of Display Effects stays on Task Tray with checking "Add to Task Tray".
- ☞ (Figure 4)



Figure 4 : Start Up Icon of Display Effects



Display Effect

Copyright(C) 1997-99 I-O DATA DEVICE,INC.

Windows, select "Resolution"

To start it automatically at the startup of



Display Effect

Copyright(C) 1997-99 I-O DATA DEVICE,INC.

after starting Display Effects.

--> "Configuration" --> "Run at starting Windows"



Display Effect

Copyright(C) 1997-99 I-O DATA DEVICE,INC.

startup of Windows.

"Run at starting Windows" is enable at the



Display Effect

Copyright(C) 1997-99 I-O DATA DEVICE,INC.

"Add to Task Tray".

If you want it to be resident at any time, check



Display Effect

Copyright(C) 1997-99 I-O DATA DEVICE,INC.

with the right mouse button on Start Up

Popup menu (Figure 5) is opened by clicking



Display Effect

Copyright(C) 1997-99 I-O DATA DEVICE,INC.

Icon of Display Effects.

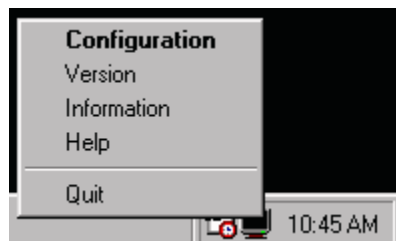


Figure 5 : Popup menu

Quit

Quit Start Up Icon of Display Effects.



Display Effect

Copyright(C) 1997-99 I-O DATA DEVICE,INC.

Resolution



Display Effect

Copyright(C) 1997-99 I-O DATA DEVICE,INC.

colors.

This tab is used to alter resolutions and



Display Effect

Copyright(C) 1997-99 I-O DATA DEVICE,INC.

Click the place you want to look in.



Display Effect

Copyright(C) 1997-99 I-O DATA DEVICE,INC.

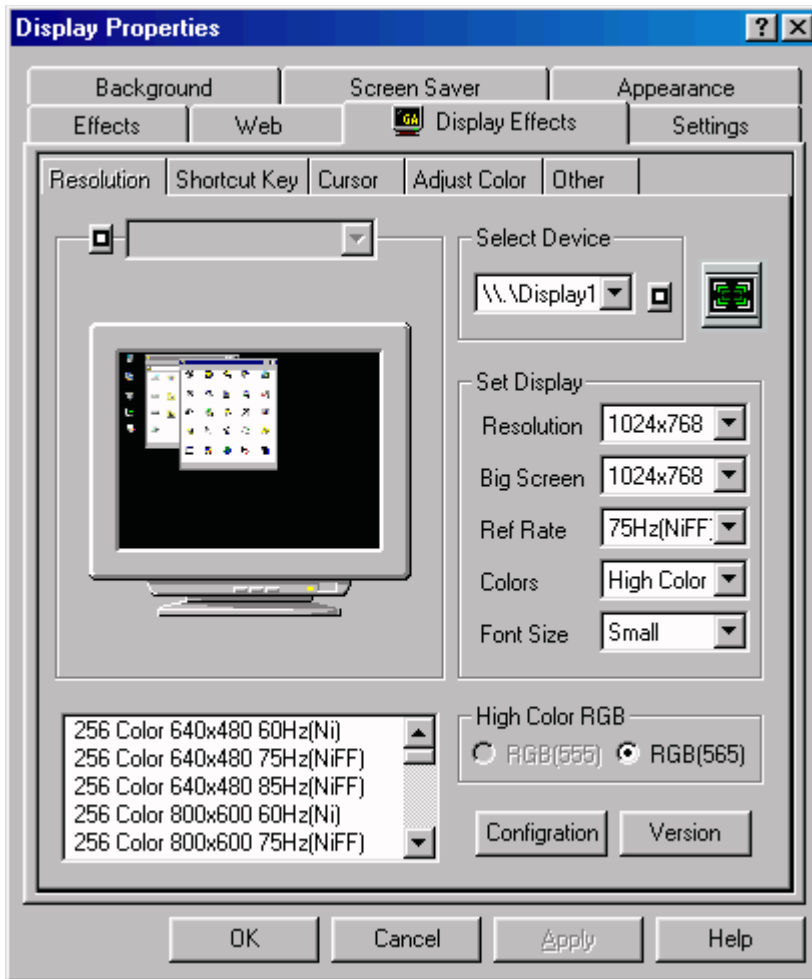


Display Effect

Copyright(C) 1997-99 I-O DATA DEVICE,INC.

version).

You need to install DirectDraw (DirectX3 or later



Display Effect

Copyright(C) 1997-99 I-O DATA DEVICE,INC.

[Configuration](#)



Display Effect

Copyright(C) 1997-99 I-O DATA DEVICE,INC.

[Version](#)



Display Effect

Copyright(C) 1997-99 I-O DATA DEVICE,INC.

Resolution



Display Effect

Copyright(C) 1997-99 I-O DATA DEVICE,INC.

colors.

This tab is used to alter resolutions and



Display Effect

Copyright(C) 1997-99 I-O DATA DEVICE,INC.

Click the place you want to look in.



Display Effect

Copyright(C) 1997-99 I-O DATA DEVICE,INC.

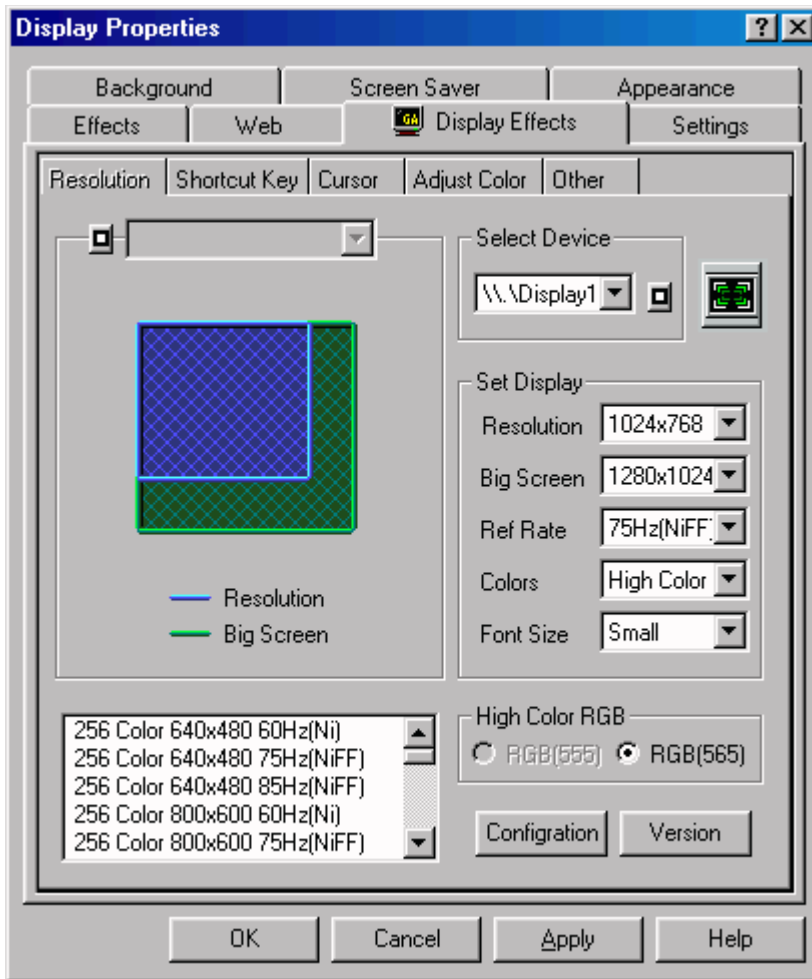


Display Effect

Copyright(C) 1997-99 I-O DATA DEVICE,INC.

version).

You need to install DirectDraw (DirectX3 or later



Display Effect

Copyright(C) 1997-99 I-O DATA DEVICE,INC.

[Configuration](#)



Display Effect

Copyright(C) 1997-99 I-O DATA DEVICE,INC.

[Version](#)

Resolution Image

It can display image of the resolution selected.
You can change a bitmap to be shown in Configuration.

[Desktop] : It displays an image which is a reduced image of actual desktop.



Display Effect

Copyright(C) 1997-99 I-O DATA DEVICE,INC.

memory.

This mode consumes lots of



Display Effect

Copyright(C) 1997-99 I-O DATA DEVICE,INC.

shows down.

Sometimes swapping occurs and the speed

[Sample Image] : It displays a fixed image. The speed is faster than "Desktop".

[None] : There is no image to be shown. Fastest speed is attained.

Big Screen Image

It displays image of ratio between actual resolution and Big Screen when Big Screen is changed.

Select CRT Type

Select CRT type.

Select Device

Select display device.



Display Effect

Copyright(C) 1997-99 I-O DATA DEVICE,INC.



Display Effect

Copyright(C) 1997-99 I-O DATA DEVICE,INC.

Windows98 only.

Test Device

This button is testing device.



Display Effect

Copyright(C) 1997-99 I-O DATA DEVICE,INC.



Display Effect

Copyright(C) 1997-99 I-O DATA DEVICE,INC.

Windows98 only.

Alter Resolution

It lists the alternative resolutions under the colors currently selected.
Select from this list the resolution you want to change.

Change Big Screen

It lists the attainable Big Screens under the resolution currently selected.
Select from this list the big screen you want to change.

Change Refresh Rates

It lists the attainable refresh rates under the resolution currently selected.
Select from this list the refresh rate you want to change.

Change Colors

It lists the attainable colors for the card currently used.
Select from this list colors you want to change.

Change Font Size

It lists the attainable font sizes under the Windows currently used.
Select font size from this list.



Display Effect

Copyright(C) 1997-99 I-O DATA DEVICE,INC.

not be able to select the font size.

If small font or big font isn't registered, you may



Display Effect

Copyright(C) 1997-99 I-O DATA DEVICE,INC.

process; "Displays Properties" -->

Fonts is registered through the following



Display Effect

Copyright(C) 1997-99 I-O DATA DEVICE,INC.

"Settings" --> "Fonts Sizes"

List of Resolution

It lists alternative resolutions for the card currently used.
You can change resolutions, refresh rates and colors at the same time.

High Color RGB

When high color is selected, you can also choose either (555)32768 colors or high colors (565)65536 colors.



Display Effect

Copyright(C) 1997-99 I-O DATA DEVICE,INC.

them

Depending on your board (driver), only one of



Display Effect

Copyright(C) 1997-99 I-O DATA DEVICE,INC.

may be selected.

Decide to change resolution



Display Effect

Copyright(C) 1997-99 I-O DATA DEVICE,INC.

If you use function on this tab like resolutions

and



Display Effect

Copyright(C) 1997-99 I-O DATA DEVICE,INC.

colors on WindowsNT4.0, decide by this button.



Display Effect

Copyright(C) 1997-99 I-O DATA DEVICE,INC.



Display Effect

Copyright(C) 1997-99 I-O DATA DEVICE,INC.

Can't change resolution on the "Apply" or "OK"

button.



Display Effect

Copyright(C) 1997-99 I-O DATA DEVICE,INC.



Display Effect

Copyright(C) 1997-99 I-O DATA DEVICE,INC.

This button doesn't appear in Windows95.



Display Effect

Copyright(C) 1997-99 I-O DATA DEVICE,INC.

Configuration



Display Effect

Copyright(C) 1997-99 I-O DATA DEVICE,INC.

this dialog.

You can change setting of Display Effects in



Display Effect

Copyright(C) 1997-99 I-O DATA DEVICE,INC.

Click the place you want to look in.

Configuration

Position at the startup

- Default
- Recall Former Position
- Center of Desktop
- Upper Left of Desktop
- Lower Left of Desktop
- Upper Right of Desktop
- Lower Right of Desktop

Tab opening with preference

- Recall Former Tab
- Resolution
- Shortcut Key
- Cursor
- Color Adjust
- Other

Image of Resolution

- Desktop
- Sample Image
- None

Run at starting Windows

Add to Task Tray

Restart for changing colors

OK Cancel

Position at the startup

You can start Display Effects by clicking with the left mouse button on Start Up Icon of Display Effects.

You can select the starting up position.



Display Effect

Copyright(C) 1997-99 I-O DATA DEVICE,INC.

menu by

If you open "Display Properties" from Pop up



Display Effect

Copyright(C) 1997-99 I-O DATA DEVICE,INC.

wallpaper

clicking with the right mouse button on the



Display Effect

Copyright(C) 1997-99 I-O DATA DEVICE,INC.

of Windows, the tab isn't automatically changed.



Display Effect

Copyright(C) 1997-99 I-O DATA DEVICE,INC.

"Apply"

The previous tab is memorized by only clicking



Display Effect

Copyright(C) 1997-99 I-O DATA DEVICE,INC.

or "OK" button in Display Effects.



Display Effect

Copyright(C) 1997-99 I-O DATA DEVICE,INC.

(If you click "Cancel", the tab isn't memorized.)

Tab opening with preference

You can start Display Effects by clicking with the left mouse button on Start Up Icon of Display Effects.

You can select tab to automatically be opened.



Display Effect

Copyright(C) 1997-99 I-O DATA DEVICE,INC.

menu by

If you open "Display Properties" from Pop up



Display Effect

Copyright(C) 1997-99 I-O DATA DEVICE,INC.

wallpaper

clicking with the right mouse button on the



Display Effect

Copyright(C) 1997-99 I-O DATA DEVICE,INC.

of Windows, the tab isn't automatically changed.



Display Effect

Copyright(C) 1997-99 I-O DATA DEVICE,INC.

"Apply"

The previous tab is memorized by only clicking



Display Effect

Copyright(C) 1997-99 I-O DATA DEVICE,INC.

or "OK" button in Display Effects.



Display Effect

Copyright(C) 1997-99 I-O DATA DEVICE,INC.

(If you click "Cancel", the tab isn't memorized.)

Resolution Image

You can select bitmap image of resolution.

[Desktop] : Displays smaller image of actual desktop.



Display Effect

Copyright(C) 1997-99 I-O DATA DEVICE,INC.

This mode consumes lots of memory.



Display Effect

Copyright(C) 1997-99 I-O DATA DEVICE,INC.

Sometimes swapping occurs and the speed shows down.

[Sample Image] : It displays a fixed image. The speed is faster than "Desktop".

[None] : There is no image to be shown. Faster speed is attained.

Run at starting Windows

Check with this box, then Start up Icon is automatically started at starting Windows.



Display Effect

Copyright(C) 1997-99 I-O DATA DEVICE,INC.

startup of Windows.

"Run at starting Windows" is enable only at the



Display Effect

Copyright(C) 1997-99 I-O DATA DEVICE,INC.

resident at any time.

Check "Add to Task Tray" if you want it to be

Add to Task Tray

Start up icon is resident on Task Tray with checking this box.
Removing the check of this item, start up icon quits.



Display Effect

Copyright(C) 1997-99 I-O DATA DEVICE,INC.

"Add to Task Tray " is in effect only at that time.



Display Effect

Copyright(C) 1997-99 I-O DATA DEVICE,INC.

Windows,

If you want it to be resident at the startup of



Display Effect

Copyright(C) 1997-99 I-O DATA DEVICE,INC.

check "Run at starting Windows".



Display Effect

Copyright(C) 1997-99 I-O DATA DEVICE,INC.

from Start up Icon.

This can't be selected if you open this dialog

Restart for changing colors

With checking this box, it restarts Windows95 when altering colors on changing resolutions. If you change colors without restarting, colors of icon, a part of displays may not be changed correctly.



Display Effect

Copyright(C) 1997-99 I-O DATA DEVICE,INC.



Display Effect

Copyright(C) 1997-99 I-O DATA DEVICE,INC.

You can select this item only for Windows95.



Display Effect

Copyright(C) 1997-99 I-O DATA DEVICE,INC.



Display Effect

Copyright(C) 1997-99 I-O DATA DEVICE,INC.

You can't change colors using Shortcut Key with



Display Effect

Copyright(C) 1997-99 I-O DATA DEVICE,INC.



Display Effect

Copyright(C) 1997-99 I-O DATA DEVICE,INC.

a check in this box.



Display Effect

Copyright(C) 1997-99 I-O DATA DEVICE,INC.

Version



Display Effect

Copyright(C) 1997-99 I-O DATA DEVICE,INC.

In this dialog you can find the version of

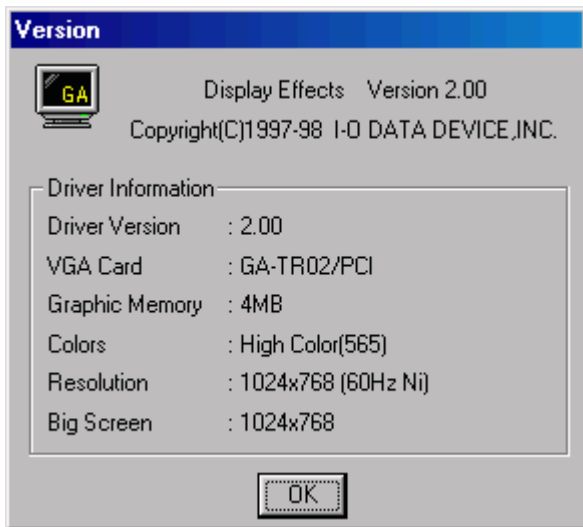
Display Effects and



Display Effect

Copyright(C) 1997-99 I-O DATA DEVICE,INC.

the current information for display driver.





Display Effect

Copyright(C) 1997-99 I-O DATA DEVICE,INC.

Shortcut Key



Display Effect

Copyright(C) 1997-99 I-O DATA DEVICE,INC.

altering resolutions and others.

This tab is used to assign Shortcut Key to



Display Effect

Copyright(C) 1997-99 I-O DATA DEVICE,INC.

[F11] key is [VF1] key,

For PC-98 series [ALT] key is [GRPH] key,



Display Effect

Copyright(C) 1997-99 I-O DATA DEVICE,INC.

[F12] is [VF2] key respectively.



Display Effect

Copyright(C) 1997-99 I-O DATA DEVICE,INC.

cases:

Shortcut Key can't be used for the following



Display Effect

Copyright(C) 1997-99 I-O DATA DEVICE,INC.

* Startup icon of Display Effects isn't resident.



Display Effect

Copyright(C) 1997-99 I-O DATA DEVICE,INC.

opened.

* Display Effects ("Display Properties") is



Display Effect

Copyright(C) 1997-99 I-O DATA DEVICE,INC.

colors with altering resolution,

* It ignores the Shortcut Keys, when changing



Display Effect

Copyright(C) 1997-99 I-O DATA DEVICE,INC.

colors" on Configuration.

in the case you check "Restart for changing



Display Effect

Copyright(C) 1997-99 I-O DATA DEVICE,INC.

which can't accept from Shortcut Keys

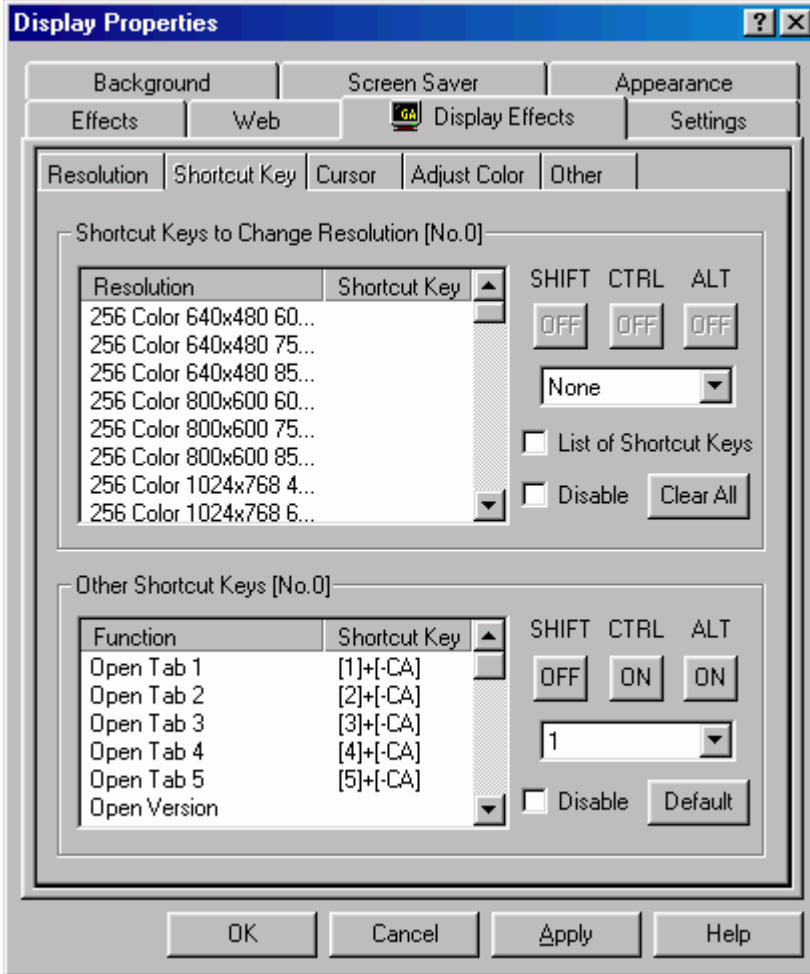
* In the case that an application is active,



Display Effect

Copyright(C) 1997-99 I-O DATA DEVICE,INC.

like (MS-DOS prompt, and so on).



Shortcut Key

Shortcut Key (also called Hot Key) is used to execute some actions by pressing some assigned keys. For example, if you assign [3]+[CTRL]+[ALT] to the resolution "256colors 1024x768 75Hz(NiFF)", press [3],[CTRL],[ALT] at the same time, makes resolution "256colors 1024x768 75Hz(NiFF)".

Shortcut Keys to Change Resolution

Select form this list a resolution you want to assign to a Shortcut Key.



Display Effect

Copyright(C) 1997-99 I-O DATA DEVICE,INC.

as follows:

The Shortcut Key started as [TAB]+[SCA] means



Display Effect

Copyright(C) 1997-99 I-O DATA DEVICE,INC.

* [TAB] : The Main Key is [TAB] key.



Display Effect

Copyright(C) 1997-99 I-O DATA DEVICE,INC.

[ALT] keys.

* [SCA] : The Sub Keys are [SHIFT],[CTRL],



Display Effect

Copyright(C) 1997-99 I-O DATA DEVICE,INC.

started as [S-A].

If Sub Keys are only [SHIFT] and [ALT], it is



Display Effect

Copyright(C) 1997-99 I-O DATA DEVICE,INC.

appeared as "-".

The location of Sub Keys which is not used is

Other Shortcut Keys

Select from this list other items you want to assign to a Shortcut Key.



Display Effect

Copyright(C) 1997-99 I-O DATA DEVICE,INC.

as follows:

The Shortcut Key started as [TAB]+[SCA] means



Display Effect

Copyright(C) 1997-99 I-O DATA DEVICE,INC.

* [TAB] : The Main Key is [TAB] key.



Display Effect

Copyright(C) 1997-99 I-O DATA DEVICE,INC.

[ALT] keys.

* [SCA] : The Sub Keys are [SHIFT],[CTRL],



Display Effect

Copyright(C) 1997-99 I-O DATA DEVICE,INC.

started as [S-A].

If Sub Keys are only [SHIFT] and [ALT], it is



Display Effect

Copyright(C) 1997-99 I-O DATA DEVICE,INC.

appeared as "-".

The location of Sub Keys which is not used is

Sub Keys

Select keys which should be pressed with a main key (keys such as [TAB],[A-Z],[0-9])

If you want to set Shortcut Key to [TAB],[SHIFT],[CTRL],

select [TAB] from the main key list, and turn ON [SHIFT] and [CTRL] buttons, and turn OFF [ALT] button.

Main Key

It is a main key for Shortcut Key, such as [TAB],[A-Z],[0-9] and so on.
Select [None] to disable Shortcut Key.



Display Effect

Copyright(C) 1997-99 I-O DATA DEVICE,INC.

key is [VF1] key,

In PC-98 series [ALT] key is [GRPH] key, [F11]



Display Effect

Copyright(C) 1997-99 I-O DATA DEVICE,INC.

[F12] is [VF2] key.

List of Shortcut Keys

It displays only the Shortcut Keys set forth in the resolution list shown left.

Disable

Shortcut Key is disable temporarily by checking this box.

Clear All

Shortcut Key is disable temporarily by checking this box.

Default

Clicking this button clears all Shortcut Keys previously assigned to altering resolution.



Display Effect

Copyright(C) 1997-99 I-O DATA DEVICE,INC.

Cursors



Display Effect

Copyright(C) 1997-99 I-O DATA DEVICE,INC.

This tab is for changing a Hardware Cursor.



Display Effect

Copyright(C) 1997-99 I-O DATA DEVICE,INC.

Click the place you want to look in.



Display Effect

Copyright(C) 1997-99 I-O DATA DEVICE,INC.

If cursor is a Software Cursor [Change],

[Special], [Cursor Colors],



Display Effect

Copyright(C) 1997-99 I-O DATA DEVICE,INC.

[Default] buttons can't be used.



Display Effect

Copyright(C) 1997-99 I-O DATA DEVICE,INC.

If there is no check on "GA Cursor",

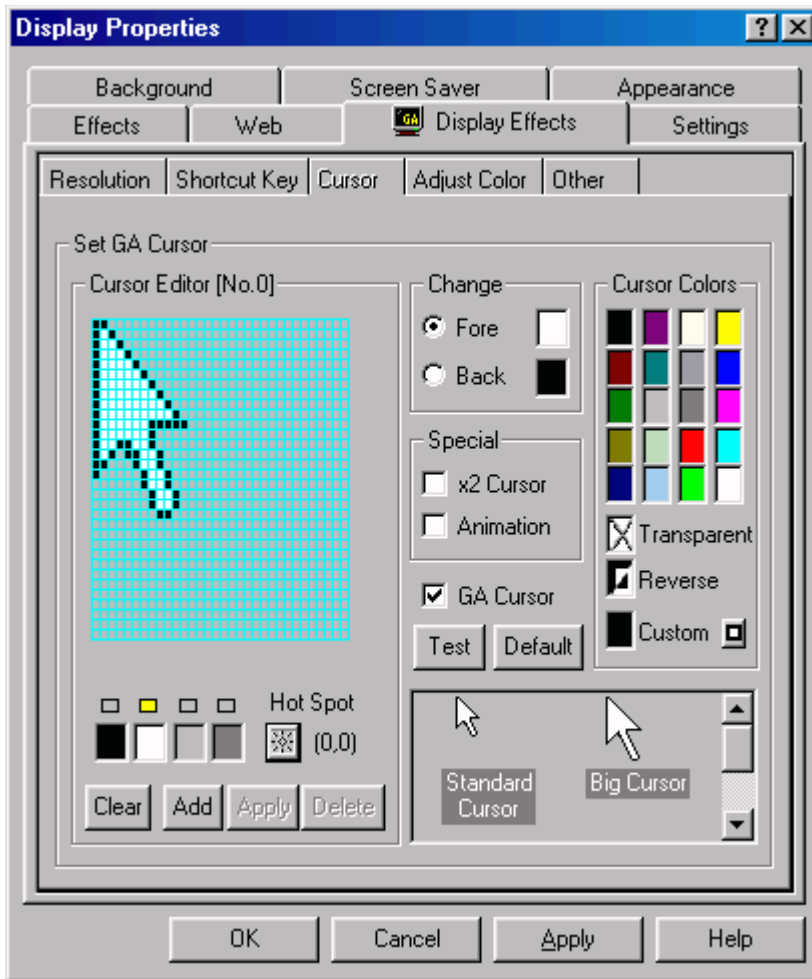
[Change], [Special], [Cursor Colors],



Display Effect

Copyright(C) 1997-99 I-O DATA DEVICE,INC.

[Test] button and [Default] button can't be used.



Display Effect

Copyright(C) 1997-99 I-O DATA DEVICE,INC.

Custom

Hardware Cursors

It is a cursor that a graphics card outputs directly to a display.
There is no relation with drawing pictures. Drawing is not be affected.



Display Effect

Copyright(C) 1997-99 I-O DATA DEVICE,INC.

click "Start" on the left bottom of display.

To make the current cursor a hardware cursor,



Display Effect

Copyright(C) 1997-99 I-O DATA DEVICE,INC.

Select [Setting] --> [Control Panel].



Display Effect

Copyright(C) 1997-99 I-O DATA DEVICE,INC.

"Mouse" in "Control Panel"

Start up "Mouse Properties" with double click on



Display Effect

Copyright(C) 1997-99 I-O DATA DEVICE,INC.

"Windows Standard".

Open "Pointer" tab, and change "Design" to



Display Effect

Copyright(C) 1997-99 I-O DATA DEVICE,INC.

from "Display" in "Pointer Locus".

Next open "Action" tab, and remove the check



Display Effect

Copyright(C) 1997-99 I-O DATA DEVICE,INC.

Now, you get a hardware cursor.

Software Cursor

It is the cursor that Windows draws to a display.

Moving the cursor causes redrawing the cursor, it affects drawing of all parts of display.

Compared with a hardware cursor, the drawing speed is slow.

Cursor Editor

You can edit the style of cursor.

You can draw dot by clicking with the left mouse button on the display.

You can write lines by dragging with the left mouse button clicked.

The number is the current cursor number you select.

This cursor number is saved by clicking "Apply" and "OK" buttons.

Pen Type

The color you selected here is used to paint in "Cursor Editor".
Clicking "Clear" button, "Cursor Editor" is filled with the selected color.



Display Effect

Copyright(C) 1997-99 I-O DATA DEVICE,INC.

The explanation of colors is as follows:



Display Effect

Copyright(C) 1997-99 I-O DATA DEVICE,INC.

color.

* Black : Part to affect Background



Display Effect

Copyright(C) 1997-99 I-O DATA DEVICE,INC.

color.

* White : Part to affect Foreground



Display Effect

Copyright(C) 1997-99 I-O DATA DEVICE,INC.

* Clear gray : Transparent part.



Display Effect

Copyright(C) 1997-99 I-O DATA DEVICE,INC.

* Dark gray : Reversed color part.

Hot Spot

Decide a hot spot of a cursor.
Press the button, click any place on "Cursor Editor".

Clear

Fill "Cursor Editor" with the color selected in the above box("Pen Type").

Add

Register cursor data located on "Cursor Editor", at the end of cursor data currently registered. The cursor number becomes an additional data number by pressing "Add".

Apply

Apply the current cursor number to the data on "Cursor Editor".
The standard cursor(No.0) can't be changed.

Delete

Delete the data of cursor number you select.
The standard cursor(No.0) can't be deleted.

Change

Specify the place you want to use "Cursor Color"

First, select either foreground color or background color. Then select "Cursor Color".



Display Effect

Copyright(C) 1997-99 I-O DATA DEVICE,INC.

Can't use it if there is no check in [GA Cursor], or
in case of software cursor.

x2 Cursor

Make cursor size double.



Display Effect

Copyright(C) 1997-99 I-O DATA DEVICE,INC.

Can't use it if there is no check in [GA Cursor],



Display Effect

Copyright(C) 1997-99 I-O DATA DEVICE,INC.

or in case of software cursor.

Animation Cursor

Continuously change cursor color.



Display Effect

Copyright(C) 1997-99 I-O DATA DEVICE,INC.

Can't use it if there is no check in [GA Cursor],



Display Effect

Copyright(C) 1997-99 I-O DATA DEVICE,INC.

or in case of software cursor.

GA Cursor

It forces a cursor to GA cursor, when Display Effects is in active, or Start Up Icon is resident.

It doesn't make a cursor GA cursor without a check.

You can't use "Changing", "Special Function", "Cursor Color", "Decide", "Default" button without a check.

Test

Change temporary cursor style to the one displayed in "Cursor Editor".



Display Effect

Copyright(C) 1997-99 I-O DATA DEVICE,INC.

This decision is temporary.



Display Effect

Copyright(C) 1997-99 I-O DATA DEVICE,INC.

"Apply" data,

If you finish Display Effects without "Add" or



Display Effect

Copyright(C) 1997-99 I-O DATA DEVICE,INC.

data is cleared.



Display Effect

Copyright(C) 1997-99 I-O DATA DEVICE,INC.

Can't use it if there is no check in [GA Cursor].

Default

Return to default setting. It sets Foreground color to white, Background color to black respectively remove the check from "x2 Cursor" and "Animation Cursor". The cursor figure will not change to the default.



Display Effect

Copyright(C) 1997-99 I-O DATA DEVICE,INC.

Can't use it if there is no check in [GA Cursor],



Display Effect

Copyright(C) 1997-99 I-O DATA DEVICE,INC.

or in case of software cursor.

System Colors

Display 20 system colors (16 colors according to your card).
You can set colors of "Foreground Color" and "Background Color" from them.



Display Effect

Copyright(C) 1997-99 I-O DATA DEVICE,INC.

in case of software cursor.

Can't use it if there is no check in [GA Cursor], or



Display Effect

Copyright(C) 1997-99 I-O DATA DEVICE,INC.

color

Depending on your board and colors, the actual



Display Effect

Copyright(C) 1997-99 I-O DATA DEVICE,INC.

may be different from the system color.

Transparent Color

Make either "Foreground Color" or "Background Color" transparent.



Display Effect

Copyright(C) 1997-99 I-O DATA DEVICE,INC.

Can't make both colors transparent.



Display Effect

Copyright(C) 1997-99 I-O DATA DEVICE,INC.

Can't use it if there is no check in [GA Cursor],



Display Effect

Copyright(C) 1997-99 I-O DATA DEVICE,INC.

or in case of software cursor.

Reverse Color

Make "Foreground Color" or "Background Color" reversed.



Display Effect

Copyright(C) 1997-99 I-O DATA DEVICE,INC.

Can't use it if there is no check in [GA Cursor],



Display Effect

Copyright(C) 1997-99 I-O DATA DEVICE,INC.

or in case of software cursor.

Color you create in Custom Color

It displayed the color you create in "Custom Color".

"Foreground color" and "Background color" can be changed by clicking this box.



Display Effect

Copyright(C) 1997-99 I-O DATA DEVICE,INC.

Can't use it if there is no check in [GA Cursor],



Display Effect

Copyright(C) 1997-99 I-O DATA DEVICE,INC.

or in case of software cursor.

Cursor List

Select from this list the cursor you want to edit.
The name can be changed by clicking on the cursor name.



Display Effect

Copyright(C) 1997-99 I-O DATA DEVICE,INC.

Create cursor color



Display Effect

Copyright(C) 1997-99 I-O DATA DEVICE,INC.

create colors.

This dialog is a Windows standard dialog to



Display Effect

Copyright(C) 1997-99 I-O DATA DEVICE,INC.

You can create and decide colors.



Display Effect

Copyright(C) 1997-99 I-O DATA DEVICE,INC.

some cards or specific colors.

This function may not be able to use on





Display Effect

Copyright(C) 1997-99 I-O DATA DEVICE,INC.

Adjust Color



Display Effect

Copyright(C) 1997-99 I-O DATA DEVICE,INC.

This tab is used to adjust colors for display.



Display Effect

Copyright(C) 1997-99 I-O DATA DEVICE,INC.

Click the place you want to look in.

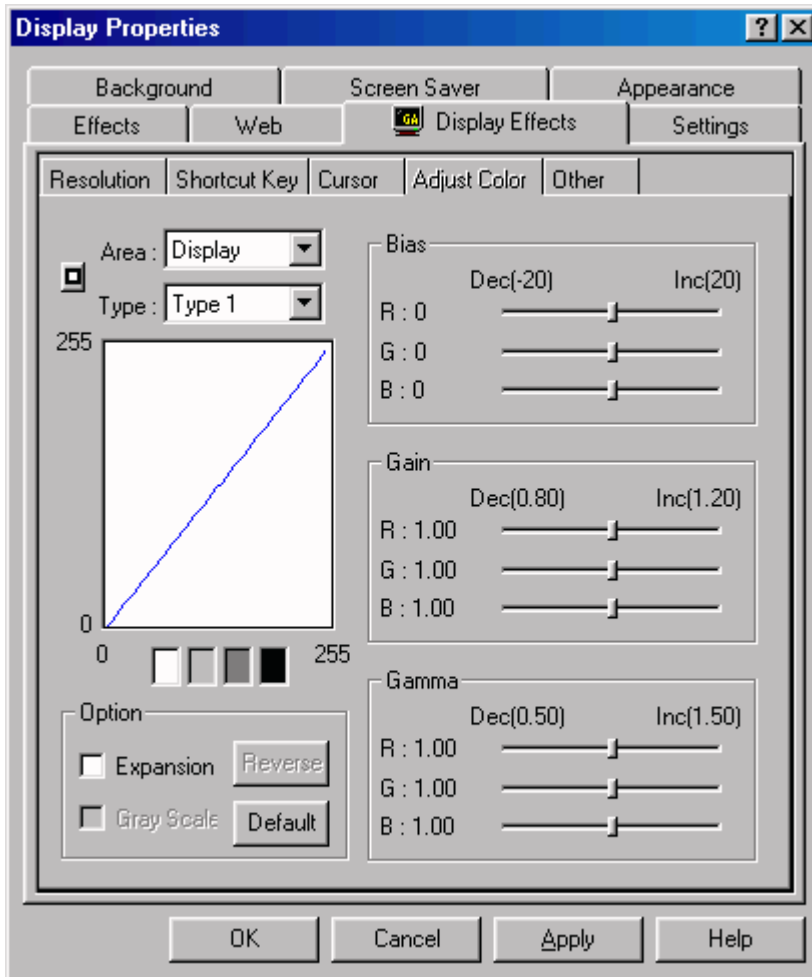


Display Effect

Copyright(C) 1997-99 I-O DATA DEVICE,INC.

and specific colors.

This function can't be used for some cards



Adjust Color Area

Select adjust color area.



Display Effect

Copyright (C) 1997-99 I-O DATA DEVICE, INC.

This function may not be used for some boards and colors.

Type of Color

Can save 5 values of color adjustment.

Select from this list the type in which you want to register color adjustment.

Color adjustment graph

This graph shows the input / output of colors you adjust using on the right bars.

If it is hard to see it, change the background color in the Background Color Box located below.

Background Color of graph

Change the background color by clicking this box if it is hard to see the above color adjustment graph.

Expansion

Color adjust area to expansion.

Gray Scale

Change display to Gray Scale.



Display Effect

Copyright(C) 1997-99 I-O DATA DEVICE,INC.

This function can't be used for same card and specific colors.

Reverse

Reverse the current color.

Default

Turn all values of selected color type to default.

Bias

Adjust bias (brightness) values of display.
Move the bars to adjust RGB (Red, Green, Blue).

Gain

Adjust gain (Contrast) values of display.
Move the bars to adjust RGB (Red, Green, Blue).

Gamma

Adjust gamma (brightness in the center) values of display.
Move the bars to adjust RGB (Red, Green, Blue).

Test Program

Run start up test program.



Display Effect

Copyright(C) 1997-99 I-O DATA DEVICE,INC.

Others



Display Effect

Copyright(C) 1997-99 I-O DATA DEVICE,INC.

This tab is used for executing Position and

Zoom of display.



Display Effect

Copyright(C) 1997-99 I-O DATA DEVICE,INC.

Click the place you want to look in.

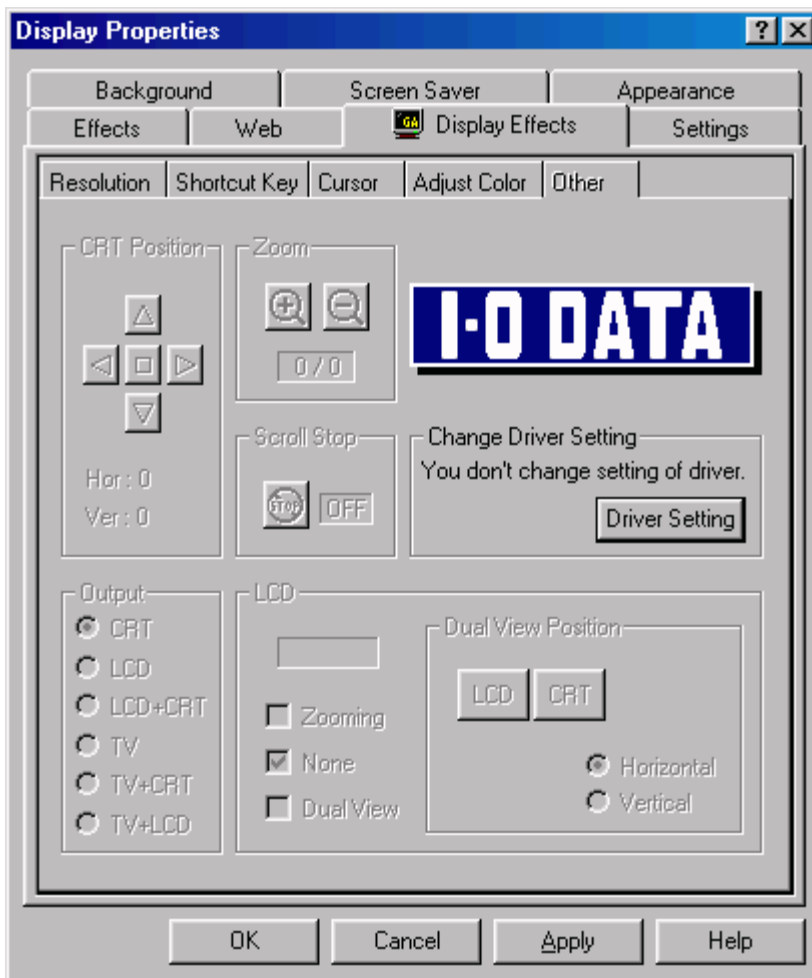


Display Effect

Copyright(C) 1997-99 I-O DATA DEVICE,INC.

Some functions of this tab can't be used for

some cards and OS's.



Position

Adjust display position.

Adjust display position from left to right by using the left and right button.

Adjust display position from upper to bottom by using the upper and bottom button.

The center button fixes the adjustment to 0(No adjustment).



Display Effect

Copyright(C) 1997-99 I-O DATA DEVICE,INC.

your card.

The maximum amount of adjustment depends on



Display Effect

Copyright(C) 1997-99 I-O DATA DEVICE,INC.

limit values.

If you press the buttons but the position, that is



Display Effect

Copyright(C) 1997-99 I-O DATA DEVICE,INC.

may be distorted or the edges may be

Depending your monitor, an adjusted display



Display Effect

Copyright(C) 1997-99 I-O DATA DEVICE,INC.

position any more.

black out. If it happens, do not move the

Zoom

Zoom in and out display with [+] and [-] buttons.



Display Effect

Copyright(C) 1997-99 I-O DATA DEVICE,INC.

This function can't be used for some cards and resolutions.

Scroll Stop

In the case of Zoom or Big Screen that the display is scrollable, pressing [Scroll Stop] button disables scrolling.

Type of LCD Panel

If the board currently used is compatible with a LCD monitor, it shows your monitor type(TFT, DSTN) here.



Display Effect

Copyright(C) 1997-99 I-O DATA DEVICE,INC.

The LCD function may not be used for some boards.

Zooming

If the board currently used is compatible with zooming feature, checking this box enables zooming.



Display Effect

Copyright(C) 1997-99 I-O DATA DEVICE,INC.

boards.

The LCD function may not be used for some

FRC / Dither / TMED

If the board currently used is compatible with display enrichment technology, the type of enrichment (FRC, Dither, TMED and so on) is shown. That adjustment can be used with checking this box.



Display Effect

Copyright(C) 1997-99 I-O DATA DEVICE,INC.

boards.

The LCD function may not be used for some

DualView

Switch to Dual View feature.

Dual View doubles the work area by displaying a consecutive image on both LCD and CRT.



Display Effect

Copyright(C) 1997-99 I-O DATA DEVICE,INC.

The LCD function may not be used for some boards.

DualView Position

Reverse CRT and LCD monitor position.



Display Effect

Copyright (C) 1997-99 I-O DATA DEVICE, INC.

boards.

The LCD function may not be used for some

DualView Position

Select horizontal or vertical monitor position.



Display Effect

Copyright(C) 1997-99 I-O DATA DEVICE,INC.

boards.

The LCD function may not be used for some

Output

You can select an output monitor here
if the current board can output to other than CRT.



Display Effect

Copyright(C) 1997-99 I-O DATA DEVICE,INC.

Output may not be used for some boards.

Driver Setting

You can open the dialog to set the driver with "Driver Setting" button if it is possible to set the driver of the currently used.



Display Effect

Copyright(C) 1997-99 I-O DATA DEVICE,INC.

and OS's.

Driver setting may not be used for some boards



Display Effect

Copyright(C) 1997-99 I-O DATA DEVICE,INC.

unique depending on your board.

Even if you can set your driver, a dialog may be



Display Effect

Copyright(C) 1997-99 I-O DATA DEVICE,INC.

Configuration



Display Effect

Copyright(C) 1997-99 I-O DATA DEVICE,INC.

environment of Display Effects.

In this dialog you can configure the



Display Effect

Copyright(C) 1997-99 I-O DATA DEVICE,INC.

Click the place you want to look in.

Configuration

Position at the startup

- Default
- Recall Former Position
- Center of Desktop
- Upper Left of Desktop
- Lower Left of Desktop
- Upper Right of Desktop
- Lower Right of Desktop

Tab opening with preference

- Recall Former Tab
- Resolution
- Shortcut Key
- Cursor
- Color Adjust
- Other

Image of Resolution

- Desktop
- Sample Image
- None

Run at starting Windows

Add to Task Tray

Restart for changing colors

OK Cancel



Display Effect

Copyright(C) 1997-99 I-O DATA DEVICE,INC.

Version



Display Effect

Copyright(C) 1997-99 I-O DATA DEVICE,INC.

of Start Up Icon of Display Effects,

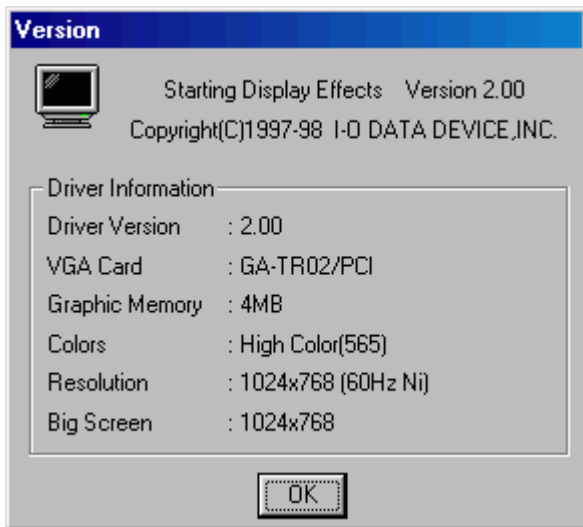
This dialog shows for the version information



Display Effect

Copyright(C) 1997-99 I-O DATA DEVICE,INC.

and the current display driver.





Display Effect

Copyright(C) 1997-99 I-O DATA DEVICE,INC.

Information



Display Effect

Copyright(C) 1997-99 I-O DATA DEVICE,INC.

This dialog shows for the device information

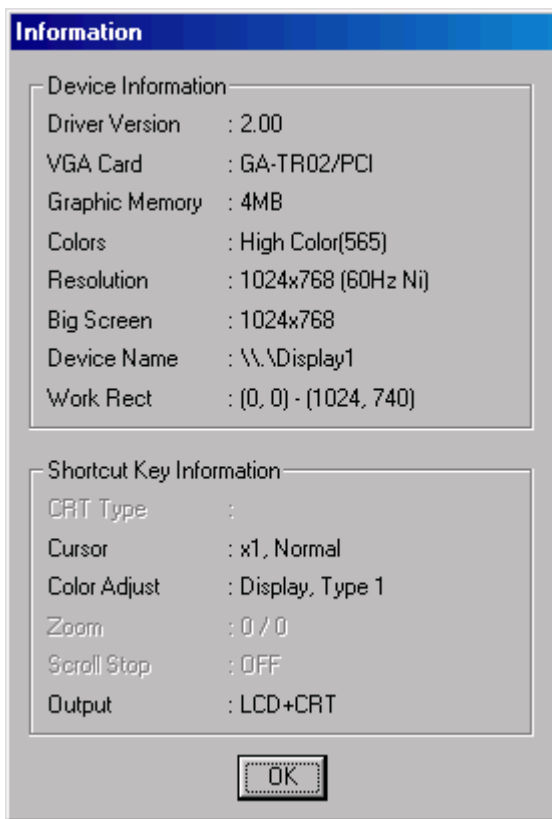
and



Display Effect

Copyright(C) 1997-99 I-O DATA DEVICE,INC.

shortcut key information.



Resolution

This tab is used to alter resolutions and colors.



Display Effect

Copyright(C) 1997-99 I-O DATA DEVICE,INC.

You have to restart Windows in changing colors,



Display Effect

Copyright(C) 1997-99 I-O DATA DEVICE,INC.

font size, high color RGB.



Display Effect

Copyright(C) 1997-99 I-O DATA DEVICE,INC.

(Colors can be changed without restarting

Windows.)



Display Effect

Copyright(C) 1997-99 I-O DATA DEVICE,INC.

Changing font size needs to restart Windows.

Shortcut Key

This tab is used to assign Shortcut Key to altering resolutions and others.

Cursors

This tab is for changing a Hardware Cursor.

Adjust Color

This tab is used to adjust colors for display.



Display Effect

Copyright(C) 1997-99 I-O DATA DEVICE,INC.

It may not be used for some boards and colors.

Others

Set Position, Zoom, Scroll Stop.



Display Effect

Copyright (C) 1997-99 I-O DATA DEVICE, INC.

Some functions may not be used for some conditions of boards and colors.

Configuration

Configure the environment of Display Effects.

Version

Show the version information of Display Effects and the information of the board.

Change Image

Change image to Display or Big Screen.

Resolution

It lists the alternative resolutions under the color currently selected.
Select resolution from this list.

Big Screen

It lists the attainable Big screens under the resolution currently selected.
Select big screen from this list.

Refresh Rates

It lists the attainable refresh rates under the resolution currently selected.
Select refresh rate from this list.

Colors

It lists the attainable colors for the card currently used.
Select color from this list.

Font Size

It lists the attainable font sizes under the Windows currently used.
Select font size from this list.



Display Effect

Copyright(C) 1997-99 I-O DATA DEVICE,INC.

Windows, you may not be able to change the font size.

If small font and big font aren't registered in



Display Effect

Copyright(C) 1997-99 I-O DATA DEVICE,INC.

"Display Properties" --> "Settings" --> "Font Size".

Font is registered through the following process;

Resolution Lists

It lists alternative resolutions for the board currently used.
You can change resolutions, refresh rates, colors at the same time.

High Colors(555)

If you select High Colors in changing colors, select high colors (555) 32768 colors.



Display Effect

Copyright(C) 1997-99 I-O DATA DEVICE,INC.

Depending on your board (driver), only one of them may be selected.

High Colors(565)

If you select High Colors in changing colors, select high colors (565) 65536 colors.



Display Effect

Copyright(C) 1997-99 I-O DATA DEVICE,INC.

Depending on your board (driver), only one of them may be selected.

Decide to change resolution



Display Effect

Copyright(C) 1997-99 I-O DATA DEVICE,INC.

resolutions and colors on Windows NT4.0,

If you use such functions on this tab as



Display Effect

Copyright(C) 1997-99 I-O DATA DEVICE,INC.

use this button for your decision.



Display Effect

Copyright(C) 1997-99 I-O DATA DEVICE,INC.

button.

Can't change resolution by the "Apply" or "OK"



Display Effect

Copyright(C) 1997-99 I-O DATA DEVICE,INC.



Display Effect

Copyright(C) 1997-99 I-O DATA DEVICE,INC.

This button doesn't appear in Windows95.

Select CRT Type

Select CRT type.

Select Device

Select display device.



Display Effect

Copyright(C) 1997-99 I-O DATA DEVICE,INC.



Display Effect

Copyright(C) 1997-99 I-O DATA DEVICE,INC.

Windows98 only.

Test Device

This button is testing device.



Display Effect

Copyright(C) 1997-99 I-O DATA DEVICE,INC.



Display Effect

Copyright(C) 1997-99 I-O DATA DEVICE,INC.

Windows98 only.

List of Shortcut Key to alter resolutions

Select from this list resolution you want to assign to a Shortcut Key.



Display Effect

Copyright(C) 1997-99 I-O DATA DEVICE,INC.

as follows:

The Shortcut Key stated as [TAB]+[SCA] means



Display Effect

Copyright(C) 1997-99 I-O DATA DEVICE,INC.

* [TAB] : The main key is [TAB] key.



Display Effect

Copyright(C) 1997-99 I-O DATA DEVICE,INC.

[ALT] keys.

* [SCA] : The sub keys are [SHIFT],[CTRL],



Display Effect

Copyright(C) 1997-99 I-O DATA DEVICE,INC.

stated as [S-A].

If sub keys are only [SHIFT] and [ALT] keys, it is



Display Effect

Copyright(C) 1997-99 I-O DATA DEVICE,INC.

appeared as "-".

The location of sub key which is not used is

List of other Shortcut Keys

Select from this list other items you want to assign to a Shortcut Key.



Display Effect

Copyright(C) 1997-99 I-O DATA DEVICE,INC.

as follows:

The Shortcut Key stated as [TAB]+[SCA] means



Display Effect

Copyright(C) 1997-99 I-O DATA DEVICE,INC.

* [TAB] : The main key is [TAB] key.



Display Effect

Copyright(C) 1997-99 I-O DATA DEVICE,INC.

[ALT] keys.

* [SCA] : The sub keys are [SHIFT],[CTRL],



Display Effect

Copyright(C) 1997-99 I-O DATA DEVICE,INC.

stated as [S-A].

If sub keys are only [SHIFT] and [ALT] keys, it is



Display Effect

Copyright(C) 1997-99 I-O DATA DEVICE,INC.

appeared as "-".

The location of sub key which is not used is

Sub Keys

Select keys which should be pressed with a main key (keys such as [TAB],[A-Z],[0-9])

If you want to set Shortcut Key to [TAB],[SHIFT],[CTRL],

select [TAB] from the main key list, and turn ON [SHIFT] and [CTRL] buttons, and turn OFF [ALT] button.

Main Key

It is a main key for Shortcut Key, such as [TAB],[A-Z],[0-9] and so on.
Select [None] to disable Shortcut Key.



Display Effect

Copyright(C) 1997-99 I-O DATA DEVICE,INC.

For PC-98 series [ALT] key is [GRPH] key, [F11]

key is [VF1] key,



Display Effect

Copyright(C) 1997-99 I-O DATA DEVICE,INC.

[F12] is [VF2] key respectively.

List of Shortcut Keys

It displays only the Shortcut Keys set forth in the resolution list shown left.

Disable

Shortcut Key is disable temporarily by checking this box.

Clear All

Clicking this button clears all Shortcut Keys previously assigned to altering resolution.

Default

Clicking this button sets to default all Shortcut Keys assigned to others.

Pen Type

The color you selected here is used to paint in "Cursor Editor".
Clicking "Clear" button, "Cursor Editor" is filled with the selected color.



Display Effect

Copyright(C) 1997-99 I-O DATA DEVICE,INC.

The explanation of colors is as follows:



Display Effect

Copyright(C) 1997-99 I-O DATA DEVICE,INC.

color.

* Black : Part to affect Background



Display Effect

Copyright(C) 1997-99 I-O DATA DEVICE,INC.

color.

* White : Part to affect Foreground



Display Effect

Copyright(C) 1997-99 I-O DATA DEVICE,INC.

* Clear gray : Transparent part.



Display Effect

Copyright(C) 1997-99 I-O DATA DEVICE,INC.

* Dark gray : Reversed color part.

Hot Spot

Decide a hot spot of a cursor.
Press the button, click any place on "Cursor Editor".

Clear

Fill "Cursor Editor" with the color selected in the above box("Pen Type").

Add

Register cursor data located on "Cursor Editor", at the end of cursor data currently registered. The cursor number becomes an additional data number by pressing "Add".

Apply

Apply the current cursor number to the data on "Cursor Editor".
The standard cursor(No.0) can't be changed.

Delete

Delete the data of cursor number you select.
The standard cursor(No.0) can't be deleted.

Change

Specify the place you want to use "Cursor Color"

First, select either foreground color or background color. Then select "Cursor Color".



Display Effect

Copyright(C) 1997-99 I-O DATA DEVICE,INC.

in case of software cursor.

Can't use it if there is no check in [GA Cursor], or

x2 Cursor

Make cursor size double.



Display Effect

Copyright(C) 1997-99 I-O DATA DEVICE,INC.

Can't use it if there is no check in [GA Cursor],



Display Effect

Copyright(C) 1997-99 I-O DATA DEVICE,INC.

or in case of software cursor.

Animation Cursor

Continuously change cursor color.



Display Effect

Copyright(C) 1997-99 I-O DATA DEVICE,INC.

Can't use it if there is no check in [GA Cursor],



Display Effect

Copyright(C) 1997-99 I-O DATA DEVICE,INC.

or in case of software cursor.

GA Cursor

It forces a cursor to GA cursor, when Display Effects is in active, or Start Up Icon is resident.

It doesn't make a cursor GA cursor without a check.

You can't use "Changing", "Special Function", "Cursor Color", "Decide", "Default" button without a check.

Test

Change temporary cursor style to the one displayed in "Cursor Editor".



Display Effect

Copyright(C) 1997-99 I-O DATA DEVICE,INC.

This decision is temporary.



Display Effect

Copyright(C) 1997-99 I-O DATA DEVICE,INC.

"Apply" data,

If you finish Display Effects without "Add" or



Display Effect

Copyright(C) 1997-99 I-O DATA DEVICE,INC.

data is cleared.



Display Effect

Copyright(C) 1997-99 I-O DATA DEVICE,INC.

Can't use it if there is no check in [GA Cursor].

Default

Return to default setting. It sets Foreground color to white, Background color to black respectively remove the check from "x2 Cursor" and "Animation Cursor". The cursor figure will not change to the default.



Display Effect

Copyright(C) 1997-99 I-O DATA DEVICE,INC.

Can't use it if there is no check in [GA Cursor],



Display Effect

Copyright(C) 1997-99 I-O DATA DEVICE,INC.

or in case of software cursor.

Cursor List

Select from this list the cursor you want to edit.
The name can be changed by clicking on the cursor name.

System Colors

Display 20 system colors (16 colors according to your card).
You can set colors of "Foreground Color" and "Background Color" from them.



Display Effect

Copyright(C) 1997-99 I-O DATA DEVICE,INC.

in case of software cursor.

Can't use it if there is no check in [GA Cursor], or



Display Effect

Copyright(C) 1997-99 I-O DATA DEVICE,INC.

color

Depending on your board and colors, the actual



Display Effect

Copyright(C) 1997-99 I-O DATA DEVICE,INC.

may be different from the system color.

Transparent Color

Make either "Foreground Color" or "Background Color" transparent.



Display Effect

Copyright(C) 1997-99 I-O DATA DEVICE,INC.

Can't make both colors transparent.



Display Effect

Copyright(C) 1997-99 I-O DATA DEVICE,INC.

Can't use it if there is no check in [GA Cursor],



Display Effect

Copyright(C) 1997-99 I-O DATA DEVICE,INC.

or in case of software cursor.

Reverse Color

Make "Foreground Color" or "Background Color" reversed.



Display Effect

Copyright(C) 1997-99 I-O DATA DEVICE,INC.

Can't use it if there is no check in [GA Cursor],



Display Effect

Copyright(C) 1997-99 I-O DATA DEVICE,INC.

or in case of software cursor.

Color you create in Custom Color

It displayed the color you create in "Custom Color".

"Foreground color" and "Background color" can be changed by clicking this box.



Display Effect

Copyright(C) 1997-99 I-O DATA DEVICE,INC.

Can't use it if there is no check in [GA Cursor],



Display Effect

Copyright(C) 1997-99 I-O DATA DEVICE,INC.

or in case of software cursor.

Custom

Create cursor color.



Display Effect

Copyright(C) 1997-99 I-O DATA DEVICE,INC.

Can't use according to boards and colors.



Display Effect

Copyright(C) 1997-99 I-O DATA DEVICE,INC.

cursor],

Can't use it if there is no check in [Using GA



Display Effect

Copyright(C) 1997-99 I-O DATA DEVICE,INC.

or in the case of software cursor.

Test Program

Run start up test program.

Adjust Color Area

Select adjust color area.



Display Effect

Copyright (C) 1997-99 I-O DATA DEVICE, INC.

This function may not be used for some boards and colors.

Type of Color

Can save 5 values of color adjustment.

Select from this list the type in which you want to register color adjustment.

Background Color of graph

Change the background color by clicking this box if it is hard to see the above color adjustment graph.

Expansion

Color adjust area to expansion.

Gray Scale

Change display to Gray Scale.



Display Effect

Copyright(C) 1997-99 I-O DATA DEVICE,INC.

This function can't be used for same card and specific colors.

Reverse

Reverse the current color.

Default

Turn all values of selected color type to default.

Bias

Adjust bias (brightness) values of display.
Move the bars to adjust RGB (Red, Green, Blue).

Gain

Adjust gain (Contrast) values of display.
Move the bars to adjust RGB (Red, Green, Blue).

Gamma

Adjust gamma (brightness in the center) values of display.
Move the bars to adjust RGB (Red, Green, Blue).

Position

Adjust display position.

Adjust display position from left to right by using the left and right button.

Adjust display position from upper to bottom by using the upper and bottom button.

The center button fixes the adjustment to 0(No adjustment).



Display Effect

Copyright(C) 1997-99 I-O DATA DEVICE,INC.

your card.

The maximum amount of adjustment depends on



Display Effect

Copyright(C) 1997-99 I-O DATA DEVICE,INC.

limit values.

If you press the buttons but the position, that is



Display Effect

Copyright(C) 1997-99 I-O DATA DEVICE,INC.

may be distorted or the edges may be

Depending your monitor, an adjusted display



Display Effect

Copyright(C) 1997-99 I-O DATA DEVICE,INC.

position any more.

black out. If it happens, do not move the

Zoom

Zoom in and out display with [+] and [-] buttons.



Display Effect

Copyright(C) 1997-99 I-O DATA DEVICE,INC.

This function can't be used for some cards and resolutions.

Scroll Stop

In the case of Zoom or Big Screen that the display is scrollable, pressing [Scroll Stop] button disables scrolling.

Zooming

If the board currently used is compatible with zooming feature, checking this box enables zooming.



Display Effect

Copyright(C) 1997-99 I-O DATA DEVICE,INC.

The LCD function may not be used for some boards.

FRC / Dither / TMED

If the board currently used is compatible with display enrichment technology, the type of enrichment (FRC, Dither, TMED and so on) is shown. That adjustment can be used with checking this box.



Display Effect

Copyright(C) 1997-99 I-O DATA DEVICE,INC.

The LCD function may not be used for some boards.

DualView

Switch to Dual View feature.

Dual View doubles the work area by displaying a consecutive image on both LCD and CRT.



Display Effect

Copyright(C) 1997-99 I-O DATA DEVICE,INC.

The LCD function may not be used for some boards.

DualView Position

Select horizontal or vertical monitor position.



Display Effect

Copyright(C) 1997-99 I-O DATA DEVICE,INC.

boards.

The LCD function may not be used for some

DualView Position

Reverse CRT and LCD monitor position.



Display Effect

Copyright (C) 1997-99 I-O DATA DEVICE, INC.

boards.

The LCD function may not be used for some

Output

You can select an output monitor here
if the current board can output to other than CRT.



Display Effect

Copyright(C) 1997-99 I-O DATA DEVICE,INC.

Output may not be used for some boards.

Driver Setting

You can open the dialog to set the driver with "Driver Setting" button if it is possible to set the driver of the currently used.



Display Effect

Copyright(C) 1997-99 I-O DATA DEVICE,INC.

and OS's.

Driver setting may not be used for some boards



Display Effect

Copyright(C) 1997-99 I-O DATA DEVICE,INC.

unique depending on your board.

Even if you can set your driver, a dialog may be

