

SPECTRA 5400 User's Manual

How to...

- [SPECTRA Information](#)
- [Set your desktop resolution](#)
- [Set your desktop color depth](#)
- [Set the refresh rate of your monitor](#)
- [Set the screen position of your monitor](#)
- [Set the gamma of your display](#)
- [Set your cursor color](#)
- [Display on your TV](#)

Using Screen Control II

- [Loading / Unloading Screen Control II](#)
- [Setting the Options](#)
- [Assigning Hotkeys](#)
- [Set your desktop resolution and color depth](#)
- [Set your refresh rate](#)
- [Set your refresh rate custom](#)

Using Adapter Control

- [How the Adapter Control works](#)

Using Refresh Control II

- [How the Refresh Control II works](#)
- [Set your refresh rate](#)

Using SnapShot

- [How the SnapShot works](#)

Using Media Scope

- [Understanding the Media Scope controls](#)
- [Playing MPEG and AVI files](#)
- [Playing Video and Audio CDs](#)
- [Creating a Program List](#)
- [Setting Options for Media Scope](#)

Advanced Options

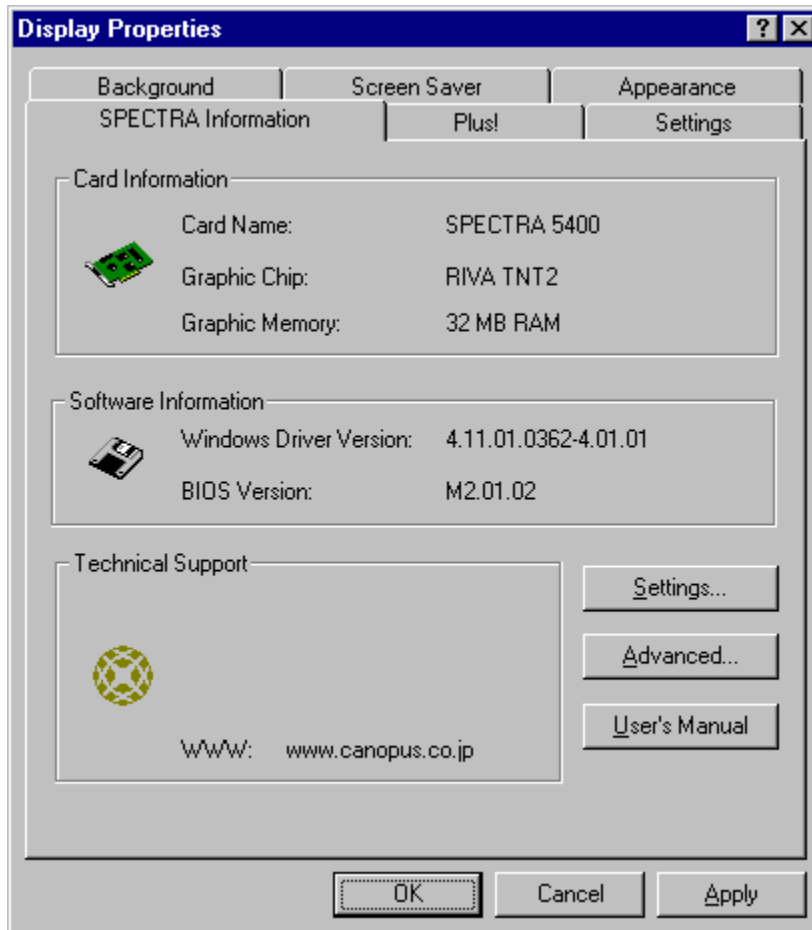
- [Setting the General Options](#)
- [Setting OpenGL Options](#)
- [Setting Mode List Options](#)

Setting Boot Options

SPECTRA Information

To show the SPECTRA Information:

1.  Bring up the Control Panel's Display Properties window.
2. Click on the **SPECTRA Information** tab.



Card Information

Show the display card information.

Software Information


Show the driver and BIOS version.

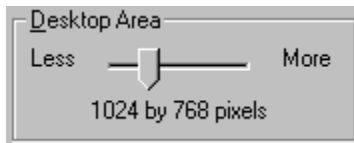
Technical Support

Show the technical support information.

Set your desktop resolution


To set the resolution of your desktop:

1.  Bring up the Control Panel's Display Properties window.
2. Click on the **Settings** tab.
3. Under "Desktop area," drag the slider to the desired resolution:




4. Click **OK** or **Apply**.

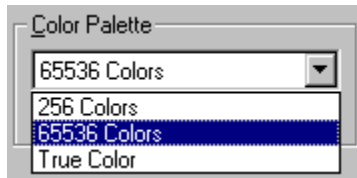
-or-

1. Click on the **Screen Control II** icon  in the taskbar.
2. Click on the resolution (and color depth) you want.

Set your desktop color depth

To set the color depth of your desktop:

1.  Bring up the Control Panel's Display Properties window.
2. Click on the **Settings** tab.
3. Under "Color palette," select the desired color depth:




4. Click **OK** or **Apply**.

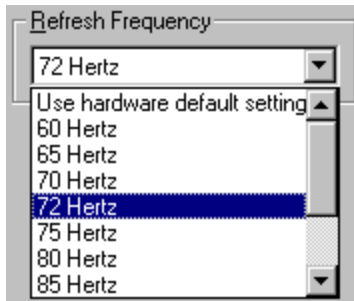
-or-

1. Click on the **Screen Control II** icon  in the taskbar.
2. Click on the color depth (and resolution) you want.

Set the refresh rate of your monitor


To set the refresh rate of your monitor:

1.  Bring up the Control Panel's Display Properties window.
2. Click on the **Settings** tab.
3. Under "Refresh Frequency" drag the list box to the desired refresh rate:





4. Click **OK** or **Apply**.

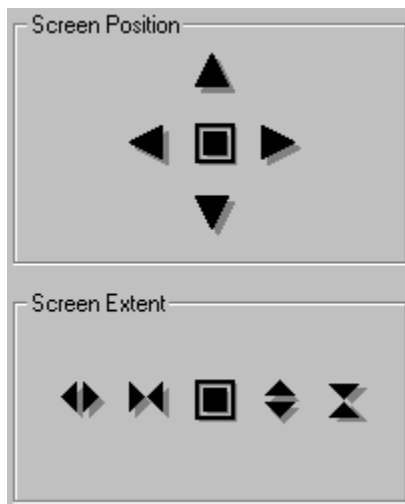
-or-

1. Click on the **Screen Control II** icon  in the taskbar.
2. Click on the resolution (and color depth) you want.

Set the screen position of your monitor

To set the screen position of your monitor:

1.  Bring up the Control Panel's Display Properties window.
2. Click on the **SPECTRA Information** tab.
3. Click on the **Setting...** button and then click on the **Desktop** tab.
4. Click the left, right, up or down arrow buttons in the Screen Position/Refresh box to shift your screen. Each click of a button shifts the screen in the indicated direction. You can click on the center button  to reset the screen to its original position.
5. Click **OK** or **Apply**.




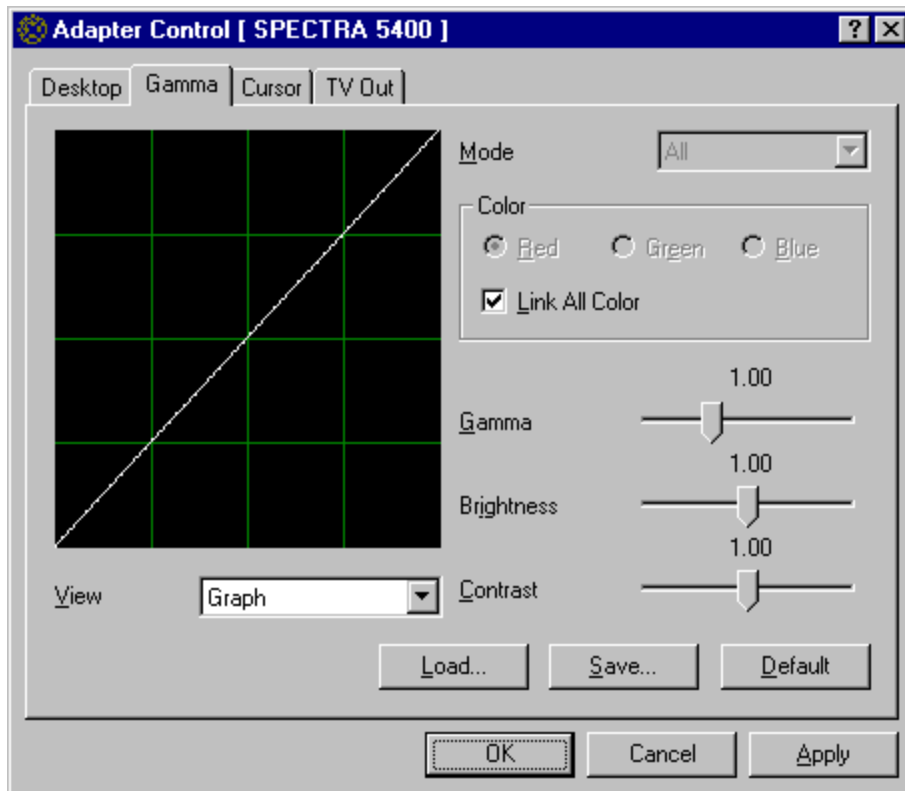
Note:

You cannot use SPECTRA display utilities to adjust your monitor's screen position while TV-out is enabled.

Set the gamma of your display

To set the gamma of your display:

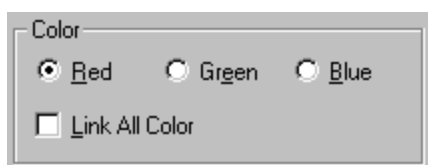
1.  Bring up the Control Panel's Display Properties window.
2. Click on the **SPECTRA Information** tab.
3. Click on the **Setting** button and then click on the **Gamma** tab.
4. Move the top slider, marked **Gamma, Brightness and Contrast**, to the left or right to achieve the desired level.
5. Click **OK** or **Apply**.



6. To save this new setting for later use, select **Save** and type a file name for the new setting.
7. To use a previously saved setting, select **Load** and the file name for that setting.
8. To reset to the standard setting, select **Default**.
9. Click **OK** or **Apply**.

You can also set the gamma of the red, green, or blue hues in your display separately:

1. Remove the check from Link All Color in the Color section. Then you can select the color Red, Green and Blue individually. Select the color that you want to adjust.




2. Move the top slider, marked **Gamma, Brightness and Contrast**, to the left or right to achieve the desired level.
3. Click **OK** or **Apply**.

To change the image for adjust window:

1. Select the View from the List box.
2. You can select Graph, Color Bar and Custom.
3. You can use your original image for Gamma control. Select the Custom, right click on the adjust window, select File from menu. Then file select window will open. If image is larger than 224 x 192, you can drag the image by left click.

Set your cursor color

To set the color of your display:


1.  Bring up the Control Panel's Display Properties window.
2. Click on the **SPECTRA Information** tab.
3. Click on the **Setting** button and then click on the **Cursor** tab.
4. Move the sliders on the left hand side of the Cursor Color box to adjust the cursor body color.
5. Move the sliders on the right hand side of the Cursor Color box to adjust the cursor outline color.

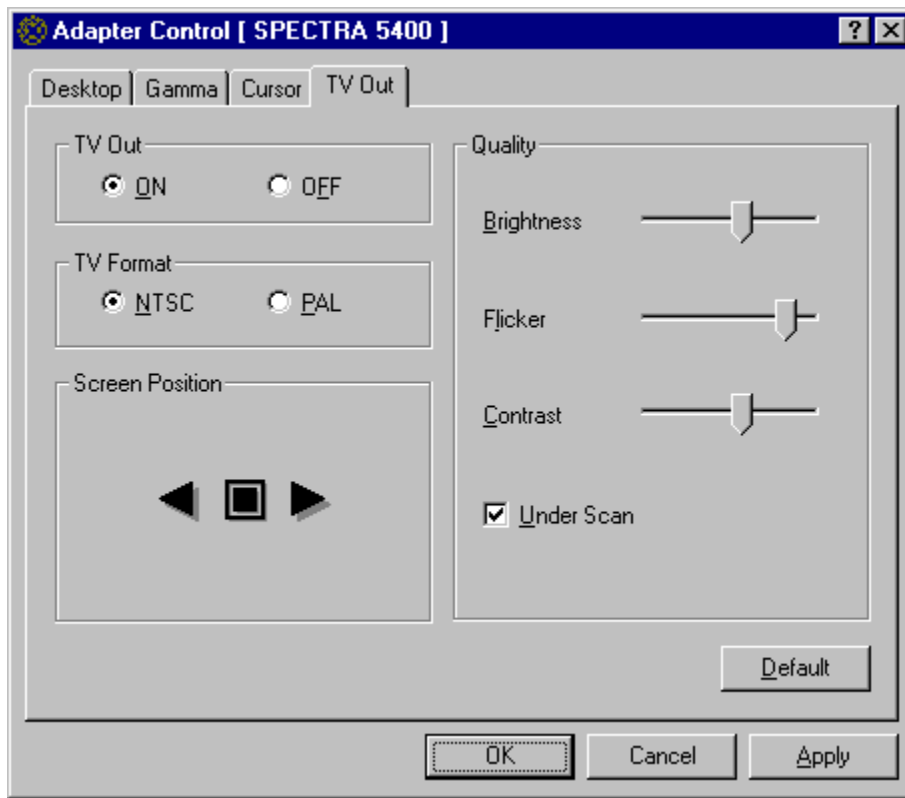


6. Click **OK** or **Apply**.

Displaying on your TV


Turning on TV output:

1.  Bring up the Control Panel's Display Properties window.
2. Click on the **SPECTRA Information** tab.
3. Click on the **Setting** button and then click on the **TV Out** tab.
4. Select the desired options in the TV Output section



5. You will then be asked if you want to change your desktop to a TV compatible mode. Click **OK**. Your desktop resolution will be reset to 640x480x60 Hz (50 Hz if you select PAL mode). 800x600 are also supported.
6. Click **OK** or **Apply**.

Adjusting the screen position on your TV:

1. Click the left, right, up or down arrow buttons in the Screen Position box to shift your screen. Each click of a button shifts the screen in the indicated direction. You can click on the center button  to reset the screen to its original position.
2. Click **OK** or **Apply**.

Note: You cannot adjust the screen position of your monitor while TV-out is enabled.

TV Format

Set the TV output format.

Quality

Brightness

Control the brightness.

Flicker

Control the flicker. Flicker will reduce if move the slider to left. Image quality will good if move the slider to right.

Contrast

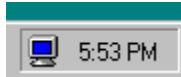
Control the contrast.

Under Scan

Under Scan Mode fits the desktop into the TV viewable display area.

Loading / Unloading Screen Control II

Screen Control II installs automatically in the tray bar of the start menu.




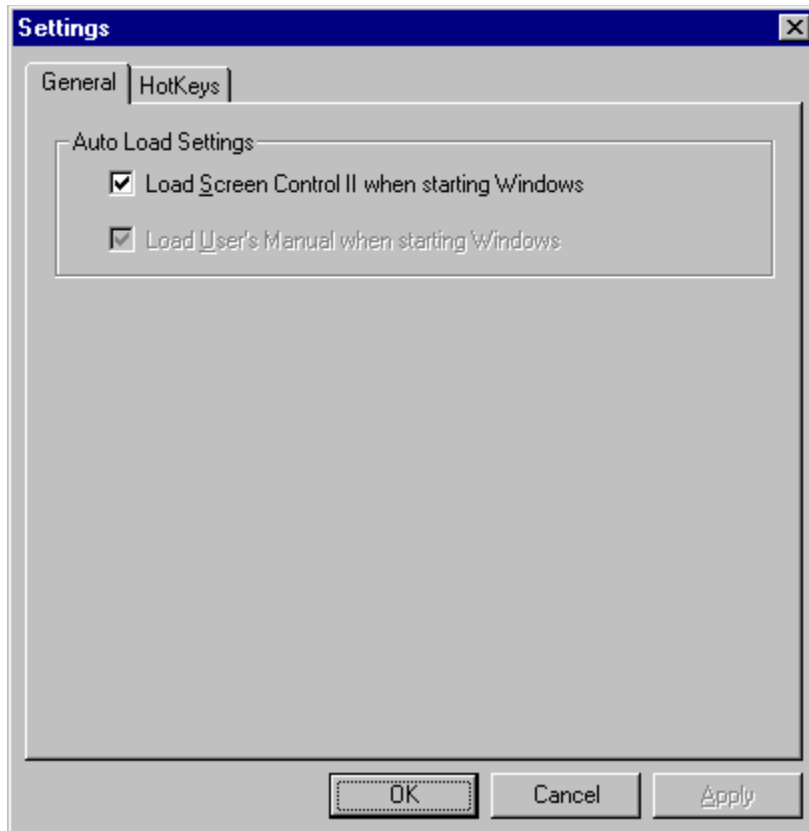
To unload Screen Control II utility click on the Screen Control II icon in the tray bar to activate its menu and select Exit.

To have Screen Control II not automatically load each time Windows runs bring up the Screen Control II dialog window and uncheck the option "Load Screen control II when starting Windows".



Setting the Options

1. Click on the **Screen Control II** icon  in the taskbar.
2. Click on the **Settings** menu.
3. Select the desired options in the Auto Load Setting and Compatibility section
4. Click **OK** or **Apply**.



Auto Load Settings:

Load Screen Control II when starting Windows.

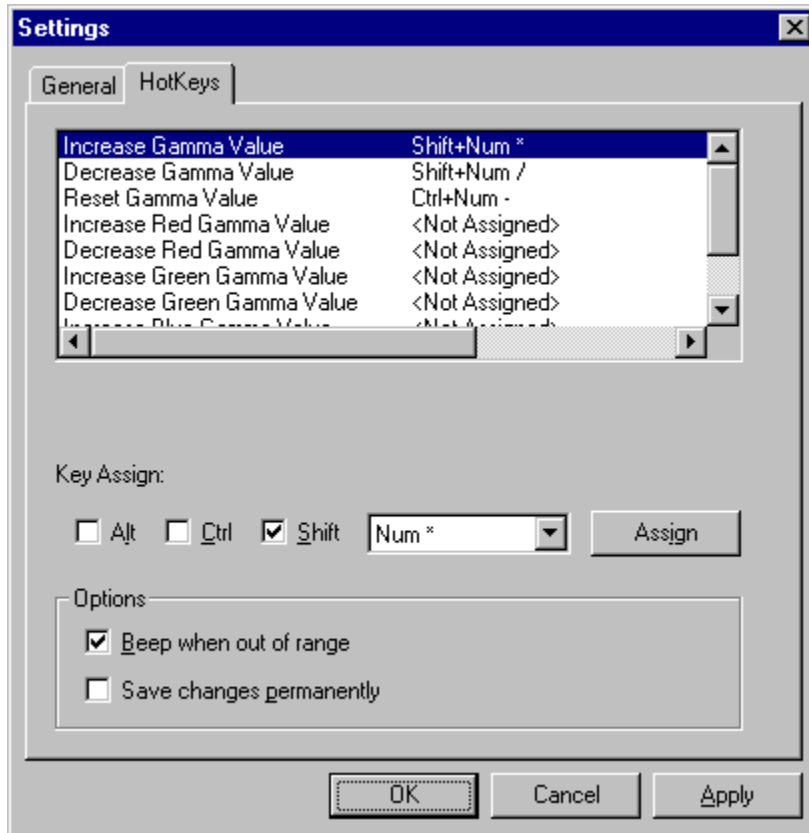
To have Screen Control II automatically load each time Windows runs bring up the Screen Control II and check the option "Load Screen control II when starting Windows". Uncheck the option to not automatically load.

Load User's Manual when starting Windows.

To have Screen Control II automatically load each time Windows runs bring up the User's Manual and check the option "Load User's Manual when starting Windows". Uncheck the option to not automatically load.


Assigning Hotkeys

Hotkeys are assigned in the Screen Control II . By default only the Increase and Decrease Gamma Values are available in the Hotkey list. Click on the Advanced List check box to see all of the functions available.




Setting Your Desktop Resolution and Color Depth

To set the resolution and color depth of your desktop:

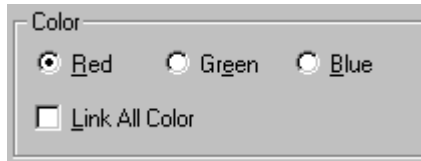
1. Click on the Screen Control II icon  in the taskbar.
2. Click on the resolution and refresh rate you want.

-or-

1.  Bring up the Control Panel's Display Properties window.
2. Click on the **SPECTRA Information** tab.
3. Click on the **Setting** button and then click on the **Desktop** tab.
4. In the Resolution section select the desktop size from the list box.
5. In the Refresh rate section select the rate from the list box.
6. Click **OK** or **Apply**.

Setting the Refresh Rate for Your Monitor

To set the vertical refresh rate of your monitor:



1. Click on the Screen Control II icon in the taskbar.
2. Click on the refresh rate you want. When you select the Custom, [Custom Refresh Rate](#) dialog will appear.
3. Refresh rate will change automatically. If monitor can display correctly, click **Yes** button to apply the setting.

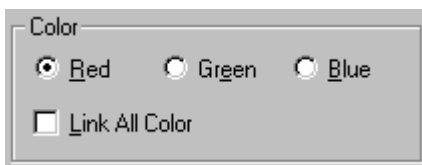
Setting the Custom Refresh Rate for Your Monitor

Important Information:

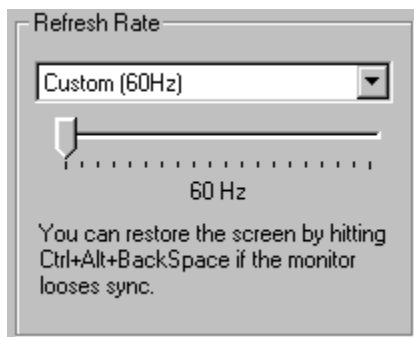
You can set custom refresh rates and adjust the screen width by using the Custom Timings control. Please note there is a possibility to damage your Monitor if you use this control and set the timings to beyond the monitors capability. Only experienced users should use this control and do so at their own risk.

Note: The Custom timing is available when you specify Custom setting in Screen Control. II and SPECTRA Information tab.

To set the vertical custom refresh rate of your monitor:



1. Bring up the Control Panel's Display Properties window.
2. Click on the **SPECTRA Information** tab.
3. Click on the **Setting** button and then click on the **Desktop** tab.
4. In the Refresh rate section select the custom rate from the list box.
5. Move the top slider, **Refresh Rate**, to the left or right to achieve the desired level.
6. Click **OK** or **Apply**.



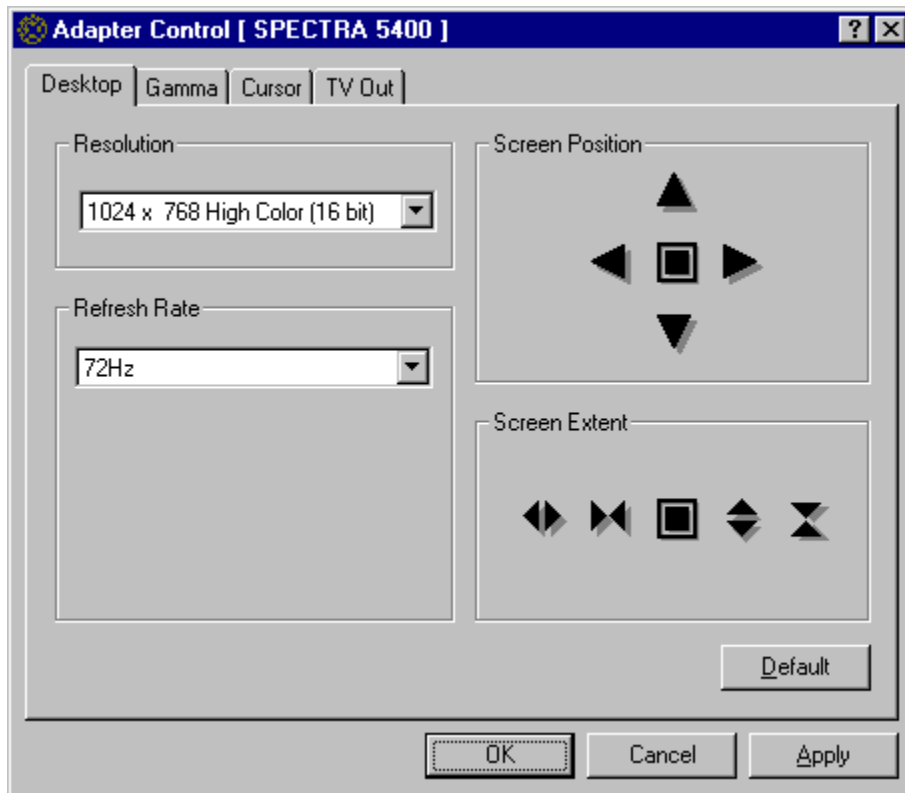
Refresh Rate:

You can select a custom refresh rate by moving the slider control. There is the possibility of selecting a refresh rate to high for your monitor and you may damage it.

Note:

If the screen loses sync and goes blank you can restore the previous setting by hitting **Alt-D**.

Using How the Adapter Control works



Desktop

The Desktop tab allows you to set the resolution, color, refresh rate and [Screen Position](#).

Gamma

The Gamma tab allows you to adjust the [Gamma](#) setting.

Cursor

The Cursor tab allows you to set the [Cursor Color](#).

TV Out

The [TV Out](#) tab only appears when you are using the SSH Type-D/TV option board allowing you to set the TV out mode.

Using Refresh Control II

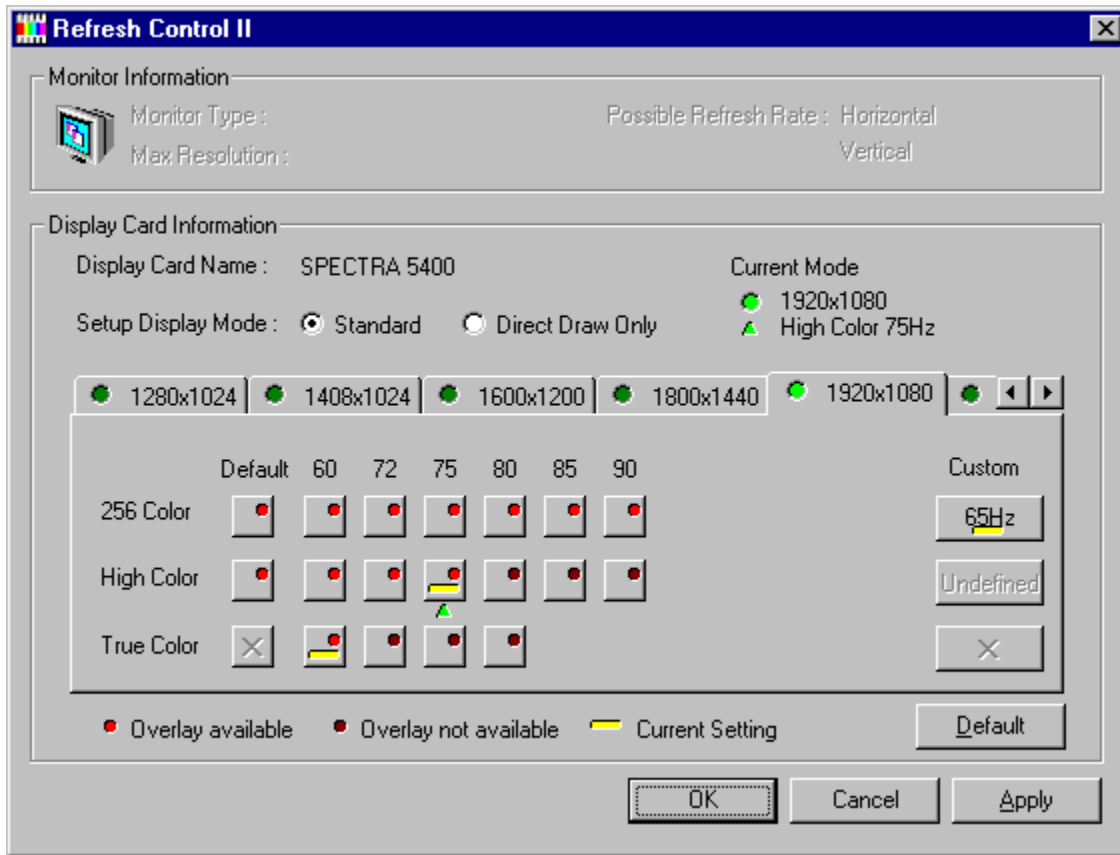
Refresh Control II is a Windows utility to set the refresh rate for all resolutions in each color mode at one time.

Loading Refresh Control II:

Select the Refresh Control II from the Screen Control II.

Caution!!!

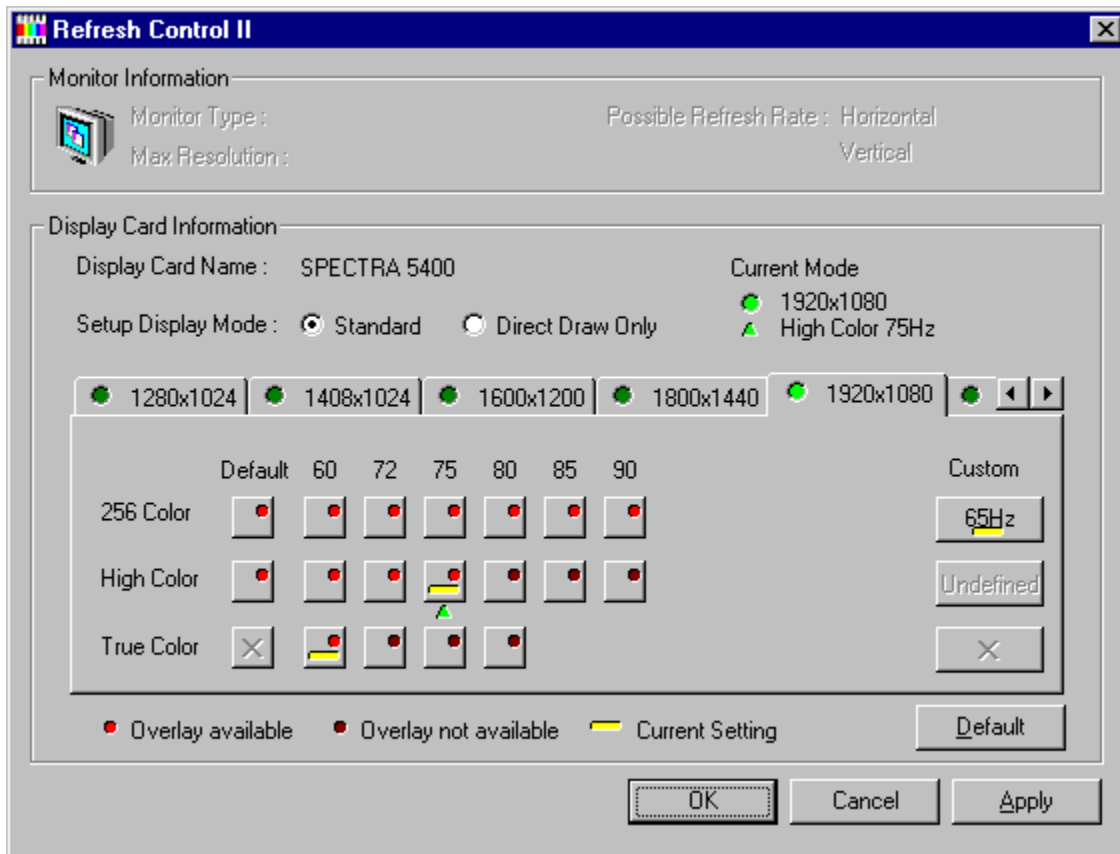
Do not set the refresh rate above your monitor's specifications. This may damage your monitor.



Setting Refresh rate

To set the vertical refresh rate of your monitor:

1. Open the Refresh Control II window from Screen Control II.
2. Select the Standard or Direct Draw Only depending on which mode you want to change.
3. Select the resolution.
4. Select the refresh rate.
5. The Testing dialog box will appear. Click **OK** button to proceed.
6. The Test image will show on your monitor. Push any key or click mouse left button to return. It will automatically return after 10 seconds.
7. Click **Yes** button to enable the new setting.
8. Click **OK** or **Apply**.



Button



Overlay available. Red light turn on.



Overlay unavailable. Red light turn off.



Current setting.




Over the maximum refresh rate of your monitor. Or mode is Inactive in the Mode List setting.

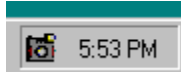


Frequency Undefined. Defined button will display the refresh rate.

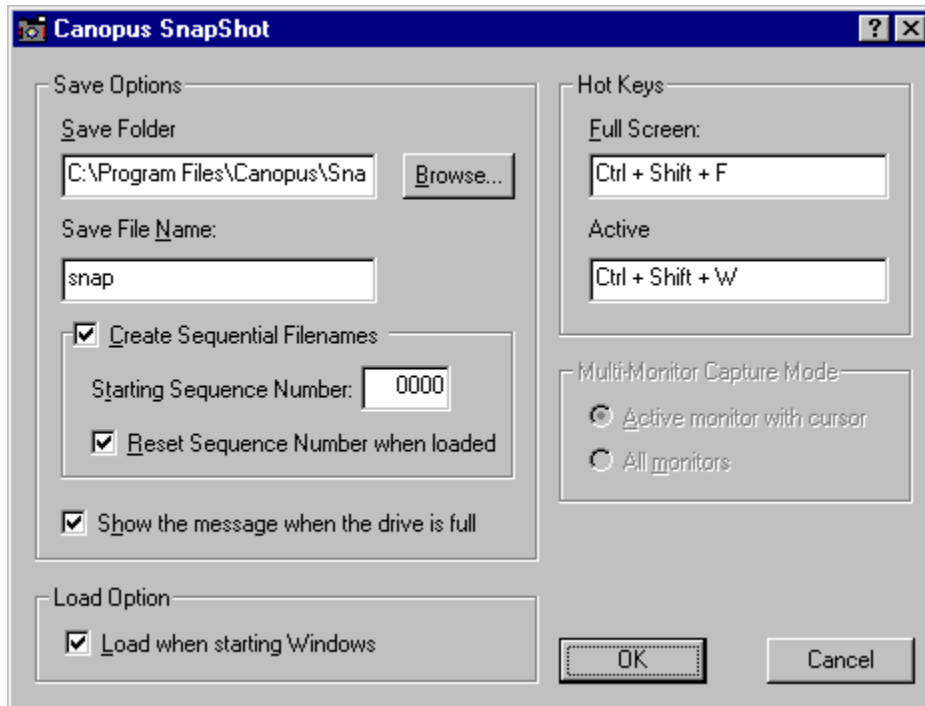
How the SnapShot works

Snap Shot is a Windows utility which captures screen or window images and automatically saves them to a file. It works in a multi-monitor environment and supports DirectDraw and Direct3D as well as secondary 3D graphics card screen captures.

Images are captured by hitting a hot key combination. These hot keys are defined in the Snap Shot Settings window. The Settings window can be accessed from the Snap Shot icon  in the Windows Task Bar tray.



The saved image captures are stored in a file with an automatic numbering sequence. The file naming and the location of where the images are saved can be changed in the Settings window.



Understanding the Media Scope Controls



Power: Exit Media Scope.

Drive: Select the CD-ROM drive to use for Video CD playback.

Media: Select what media to play. You can choose from **File**, **Video CD**, **Audio CD**, or **Live Video**.

Eject: When playing a CD, ejects the CD on drives that support it. When playing a file, closes the display window and brings up an Open File dialog box.

Icon: Minimize Media Scope to an icon.



Play: Open the playback window and begin playback. You can control playback by using the slide bar and controls at the bottom of the display window, or by using the controls on the remote.

Pause: Pause playback; click again to resume.

Stop: Stop playback.



Prev: When playing back a video or audio CD, go to the previous track. When playing back a file, go to beginning of the file and pause.

Next: When playing back a video or an audio CD, go to the next track. When playing back a file, go to end of the file and pause.

Return: For controlling playback of Video CD 2.0 titles.

Rec: Capture live video to disk.



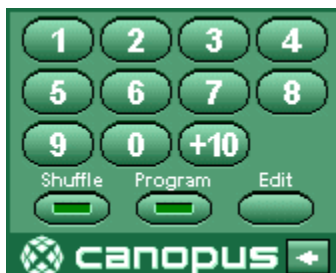
- Rew:** Rewind while the button is held down.
- FF:** Fast forward while the button is held down.
- Back:** Go back one frame while playback is paused. (Works when playing back AVI files.)
- FW:** Advance one frame while playback is paused. (Works when playing back AVI files.)



- Size:** Choose display size (**1x**, **2x**, **3x**, **Maximize**, **Full Screen**). Unavailable sizes are displayed in gray.
Note: When playing in **Full Screen**, double-click on the video to return to the display window.
- Save:** Capture the currently displayed frame and save it as an image file. Use the **OPTION** button to select how the image will be saved.
- Option:** Set preferences for Media Scope.




- Volume:** Adjust playback volume: + increases volume,- decreases volume.
- Speed:** Adjust playback speed:+ increases speed,- decreases speed.(Works only with AVI files.)
- Repeat:** Play back file or track in a loop.
- Mute:** Stop sound output. Click again to resume.





- Keypad:** Specify track number (or file order) for playback.
- Shuffle:** Play back tracks (or files) in random order.
- Program:** Play back tracks (or files) in the order specified with the **Edit** button.

Edit: Select tracks (or files) to play back as a Program Change the size of the Media Scope control.

 : Change the size of the Media Scope control.



Playing MPEG and AVI Files

To play MPEG or AVI files

1. Click on the **Media**  selector at the top of the remote and set it to **File**.
2. Click on the **Play** button  to bring up an Open File dialog box.
3. Locate the file, and click **Open** to bring up a display window and begin playing.

Playing Video and Audio CD

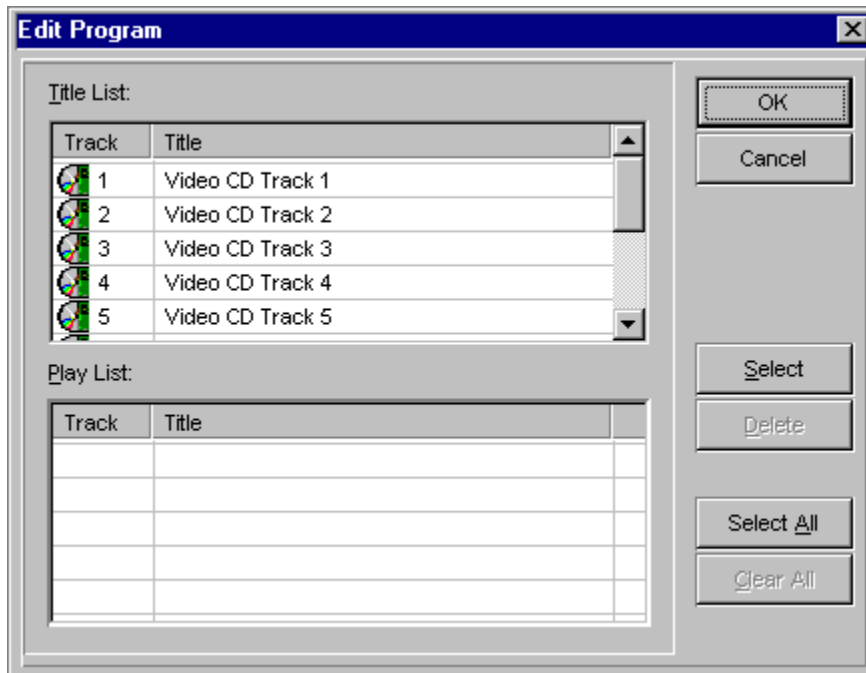
To play Video or Audio CD

1. Insert the CD into the CD-ROM drive. If you have multiple CD-ROM drives, use the **Drive** button to select a CD-ROM drive.
2. Click on the **Media**  selector at the top of the remote and set it to **V**ideo CD or **A**udio CD.
3. Click on **Play**  to load the CD, and begin playback from the first track.
4. You can now use the keypad to select a track to play, or use the **EDIT** command to create a pre-programmed play list.

Creating a Program List

To create a Video and Audio CD program list

1. Begin playing a Video or Audio CD. Or, select a directory containing Video or Audio CD files by playing one of those files.



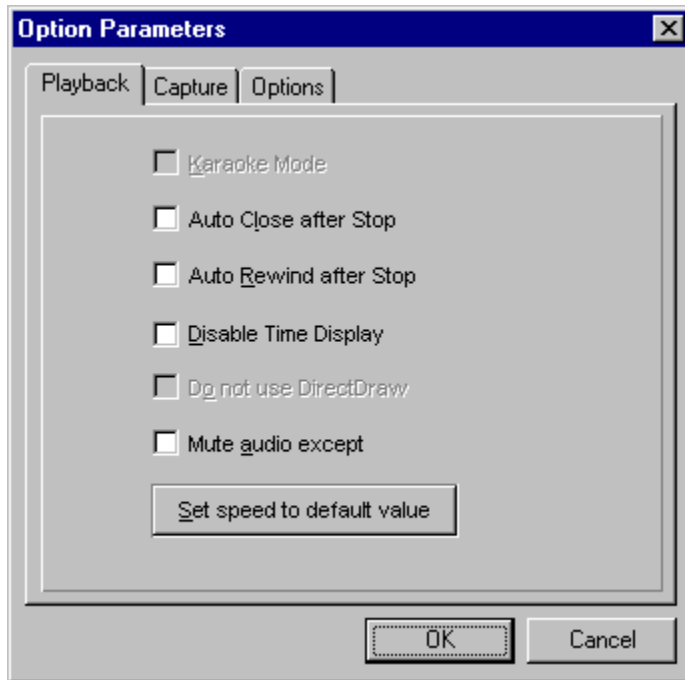
2. From the **Title List**, click on each track (or file) you want to play, and then click on the **Select** button. The selected tracks will be saved in the **Play List**.
3. When finished selecting titles, click **OK**.

To create a MPEG and AVI File program list

1. Begin playing a MPEG or AVI Files. Or, select a directory containing MPEG or AVI files by playing one of those files.

Setting Options for Media Scope

You can set the following preferences with the **Options** button:



Karaoke Mode

Change audio to Karaoke during Karaoke Video CD playback.

Auto Close after Stop

When playback ends, close the display window.

Auto Rewind after Stop

After playing back a file, automatically rewind to the beginning.

Disable Time Display

Do not display the time elapsed during playback.

Do not use DirectDraw

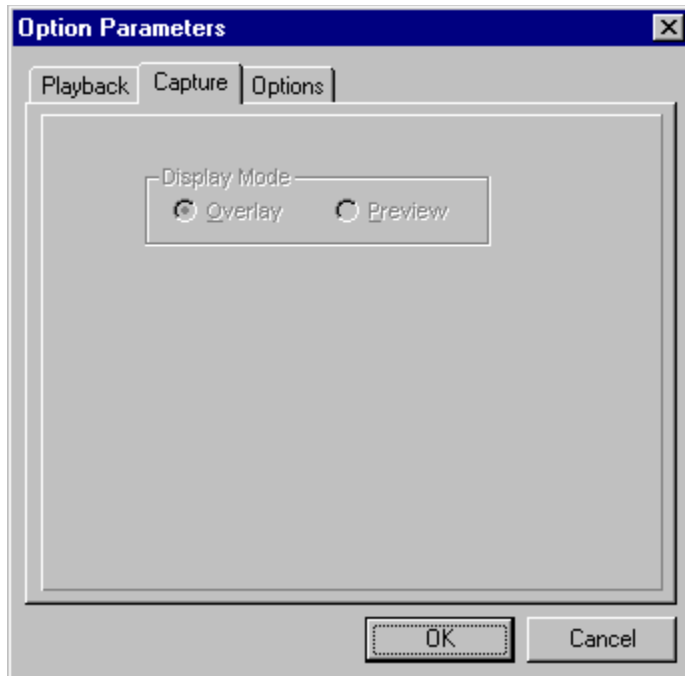
Do not use DirectDraw for draw images.

Mute audio except Live Video

Media Scope will mute Line In except Live Video.

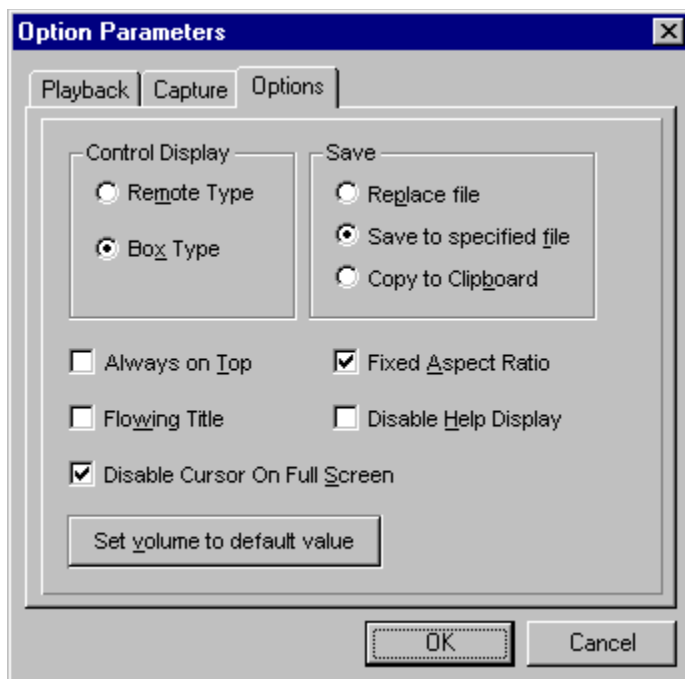
Set speed to default value

Set the playback speed to default.



Display Mode

Change the display mode to Overlay or Preview in Live Video.



Control display

Change the Media Scope controller type to Remote or Box.

Save

Select how to save images captured from AVI files.

Replace file

Once a file name has been specified, save the captured image without bringing up the Save File dialog box.

Save to specified file

Always bring up a Save File dialog box to select the file name and file format for the captured image.

Copy to Clipboard

Copy the captured image to the clipboard.

Always on the top

Show the Media Scope always on the top.

Flowing title

Display the title to Media Scope display while playing it. (E.g. Karaoke CD supporting title display.)

Fixed Aspect Ratio

Keep the horizontal and vertical size of playback to the same proportions as the source size.

Note: Depending on the size of the source image, some of the image may be cut off on the sides during full-screen playback. To display the entire image, leave this box unchecked.

Disable Help Display

Disable bubble help messages normally displayed as the cursor passes over each control button.

Disable Cursor on Full Screen

During full screen display mode, do not display the cursor.

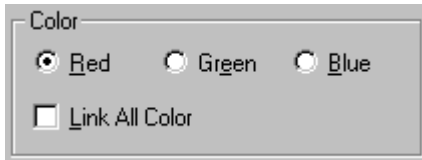
Set volume to default value

Set the volume setting to default.

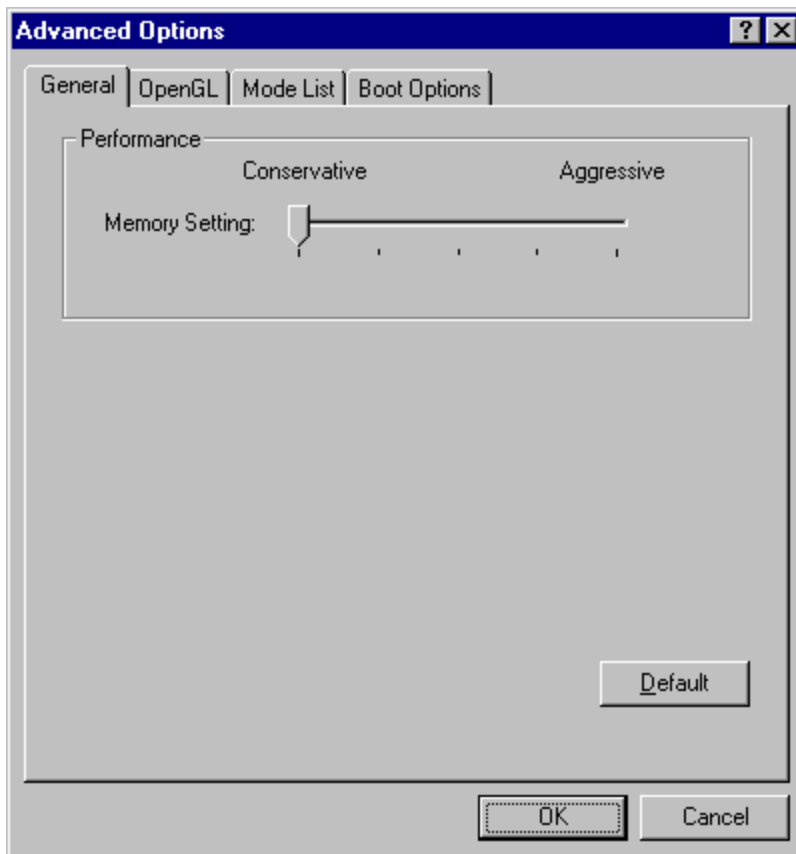
Setting the General Options

Moving the slider beyond "Conservative" mode will violate the card's specifications. The card may not function properly resulting in rendering errors, locking up, or possible damage to your system. Warranty will void once you choose "Yes" button at the end of this message, and Canopus will not make any compensation caused by it in any case.

To set the General setting:



1. Bring up the Control Panel's Display Properties window.
2. Click on the **Settings** tab and then click on the **Advanced ...** button.
3. Click on the **SPECTRA Information** tab.
4. Click on the **Advanced...** button and then click on the **General** tab.
5. In the System section use the Memory Setting slider control and AGP check box.
6. Click **OK** or **Apply**.



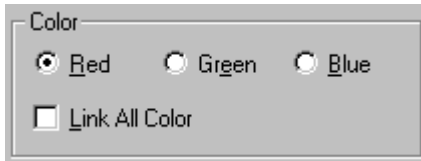
Performance

Memory Setting

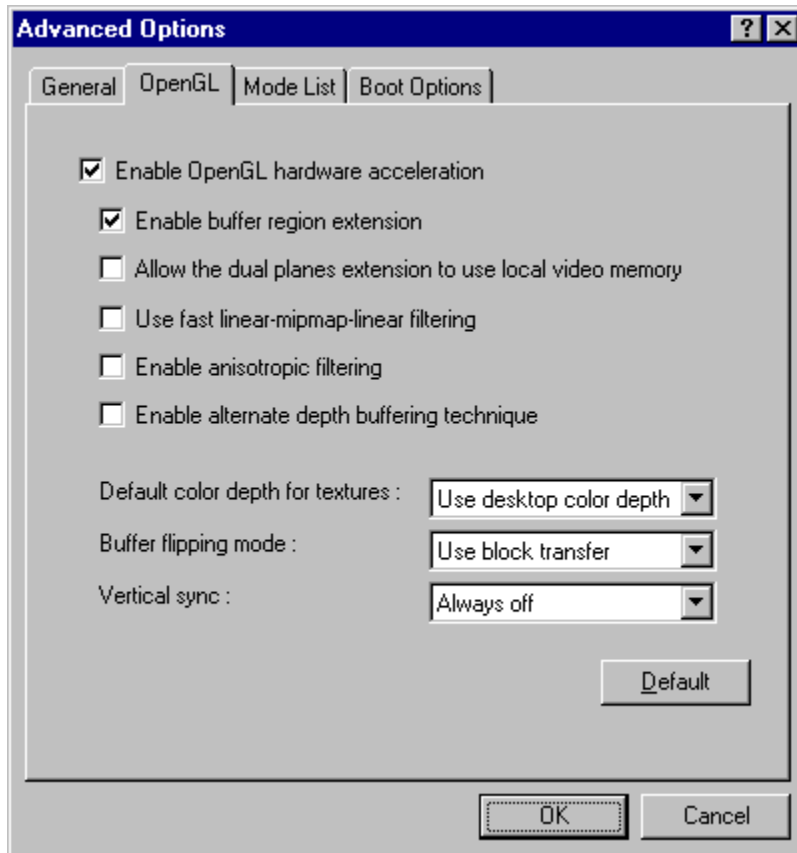
Memory Setting slider control to change the setting in the range from Conservative to Aggressive.

Setting the OpenGL Options

To set the OpenGL setting:



1. Bring up the Control Panel's Display Properties window.
2. Click on the **Settings** tab and then click on the **Advanced ...** button.
3. Click on the **SPECTRA Information** tab.
4. Click on the **Advanced...** button and then click on the **OpenGL** tab.
5. In the Options section use the setting check box.
6. Click **OK**.



Options

Enable OpenGL hardware acceleration

OpenGL hardware acceleration will use the SPECTRA 5400 to improve the performance of OpenGL applications.

Enable buffer region extension

Allows the drivers to use the OpenGL extension **GL_KTX_buffer_region**. This can increase application performance in 3D modeling applications that support this extension.

Allow the dual plane extension to use local video memory

Allows the use of local video memory when the GL_KTX_buffer_region extension is enabled. However, if there are less than 8 MB of local video memory available, dual planes extension support will not be enabled. This setting has no effect if the "Enable buffer region extension" option above is disabled.

Use fast linear-mipmap-linear filtering

Allowing fast linear-mipmap-linear filtering will provide increased application performance at the expense of some image quality. In many cases, a loss of image quality may not be noticeable, so you may wish to take advantage of the extra performance gained by enabling this feature.

Enable anisotropic filtering

Anisotropic filtering provides better texture image quality as the texture surface becomes more oblique to the eye point. It is disabled by default to comply with OpenGL conformance settings.

Enable alternate depth buffering technique

Enables an alternate technique for depth buffering. This lets the hardware use a different mechanism for depth buffering in 16 bit applications. Enabling this setting can produce higher quality rendering of 3D images.

Default color depth for textures

This option determines whether textures of a specific color depth should be used by default in OpenGL applications. **Use desktop color depth** will always use textures of the color depth at which your Windows desktop is currently running. The **Always use 16 bpp** and **Always use 32 bpp** options will force the use of textures of the specified color depth, regardless of your desktop settings.

Buffer flipping

This option determines the buffer flipping mode for full-screen OpenGL applications. You can select from the block transfer method, the page flip method or auto-select. Auto-select allows the driver to determine the best method based on your hardware configuration.

Vertical sync

This option lets you specify how vertical sync is handled in OpenGL. **Always off** will always disable vertical sync in all OpenGL applications. **Off by default** will keep vertical sync disabled, unless an application specifically requests that it be enabled. **On by default** will keep vertical sync enabled, unless an application specifically requests that it be disabled.

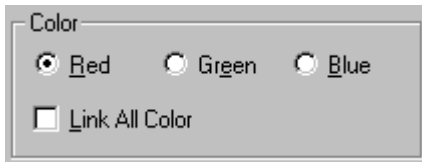
Setting the Mode List Options

The number of the resolution is limited by the Windows NT system specification. The SPECTRA Series has a Mode List Options to select the resolution you want to use.

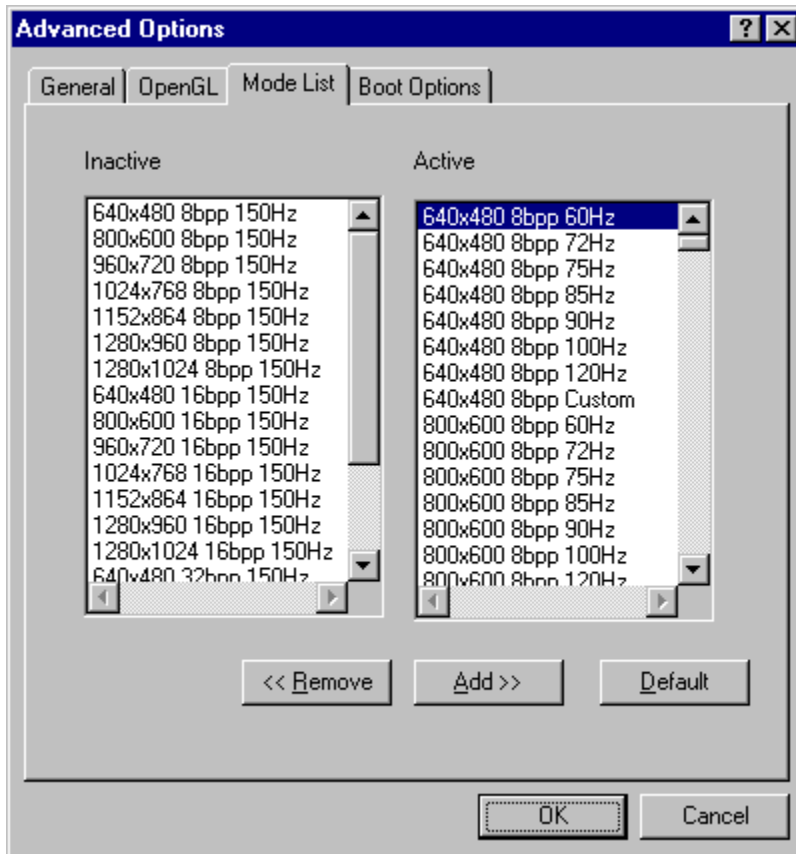
Note:

Add 640 x 480 and 800 x 600 mode if you are using SSH Type-D/TV option board. The TV-out option will need these resolutions.

To set the Mode List option setting:



1. Bring up the Control Panel's Display Properties window.
2. Click on the **SPECTRA Information** tab.
3. Click on the **Advanced...** button and then click on the **Mode List** tab.



Inactive

Display inactive resolution mode list.

Active

Display active resolution mode list.

<< Remove

Remove the selected resolution from Active mode list.

Note: Can not remove the current resolution and 640 x 480 60Hz from the Active mode list.

>> Add

Add the selected resolution to Active Mode list.

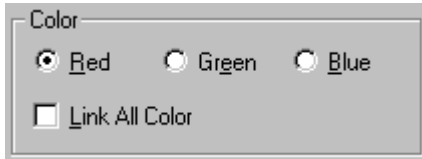
Default

Mode list will set to the default.

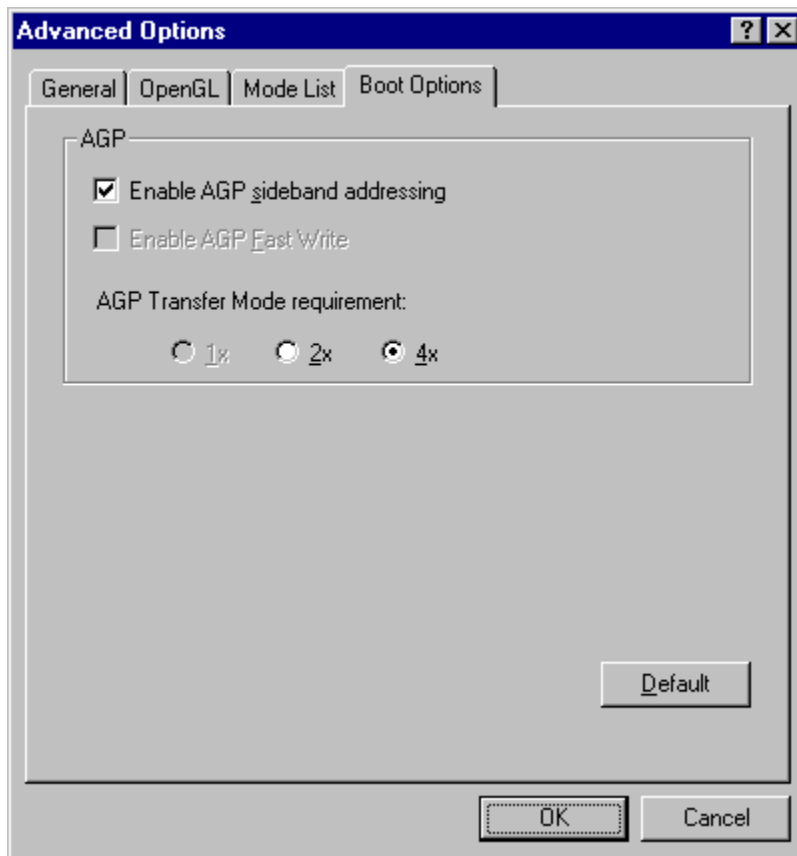
5. Change the setting.
6. Click **OK**.
7. Restart the system.

Setting the Boot Options

To set the Boot option setting:



1. Bring up the Control Panel's Display Properties window.
2. Click on the **Settings** tab and then click on the **Advanced ...** button.
3. Click on the **SPECTRA Information** tab.
4. Click on the **Advanced...** button and then click on the **Boot Option** tab.
5. In the Options section use the setting check box.
6. Click **OK**.
7. Restart Dialog Windows Click **Yes**.



AGP

Enable AGP sideband addressing

Enable AGP Sideband addressing.

Enable AGP Fast Write

Enable AGP Fast Write.

AGP Transfer Mode requirement

AGP Transfer Mode 1X, 2X and 4X.

