

WindowsNTŠÖ~A fIf“f%fCf“f\ftfgfEjFfA

POWER REPORT“Á‘I □V□ìfIf“f%fCf“f\ftfgfEjFfA



nMenu4 ver 1.0.1.0



POWER REPORT“Á‘I 'è”ôfIf“f%fCf“f\ftfgfEjFfA



□GTerm for Windows95 / □GTerm for WindowsNT Version 3.06



□GCaps32 for WindowsNT Version 0.4fÀ f\□[fX•t,«



□GŠÛfGfffBf^32 for WindowsNT Version 1.55



‰pÆê□GŠÛ□ì□-fLfbfg for □GŠÛfGfffBf^32 for WindowsNT v1.55



GCaps32 for WindowsNT Version 0.4fÀ f\ [fX•t,«

インストールの実行



Žû~^ffBf&fNfgfŠ DISC1:\OLS\WINNT\HCAPS32



□ìžò □Ä“i □G•v Ž□  
<http://www2.mitene.or.jp/maruo/>



“à-e

□@□GCaps32 for  
WindowsNT, Í□AWindows”Å, Ì□Gcaps, ðWindowsNT, É^Ú□A, ·, é, ±, Æ, ð-  
Ú“I, Æ, μ, ½f\ftfg, Å, ·□B’S•”, Í^Ú□A, Å, «, Ü, ¹, ñ, Å, μ, ½, º□A, Æ, è, , !  
, , fJ□[f\ f<^Ú“®, Ì%Á’¬, Æ%p□”fL□[, ðCapsLock%»», ·, é<@”\  
, Í□³□í, É“®□ì, ·, é, Ì, Å, »», ê, ¾, -, Å, à•Ö-~ , ©, ÆŽv, ç, Ü, ·□B



ftf@fCf<□\□¬

HCAPS32 LZH 25,635 96-10-08 0:15



□GŠŪfGffBf^32 for WindowsNT Version 1.55

インストールの実行



Žû~^ffBfçfNfgfŠ DISC1:\OLS\WINNT\HMNT155



□ìŽÒ □Ä“; □G•v Ž□  
<http://www2.mitene.or.jp/maruo/>



“à-e

### 32bit”Å,É,Â,ç,Ä

□GŠŪfGffBf^32 for WindowsNT,Í□AWindowsNT-  
p,É32bitfAfvfŠfP□[fVf#f“ ,Æ,μ,Ä□ì,è,È,¨,μ,½□GŠŪ,Å,·□B

Šî-{"I,É□A□GŠŪ32,Í□GŠŪ,Æ,Ù,Æ,ñ,Ç“¨,¶•¨,Å,·□BŽå,È□V<@“\,Í^È  
‰º,Ì,Æ,¨,è,Å,·□B

□|□@f□f“f0ftf@fCf<fl□[f€‘Î‰ž  
□|□@CTL3D32.DLL,ª,¨,é,Æ3Df\_fCfA□f0  
□|□@100-œ□s,Û,ÅOK  
□|□@□ÄfI□[fvf“,Ì□,‘-‰»<@“\□i“@□ìŠÅ<<-•Ò□W,Å□Ý‘è□j  
□|□@hidemaru.ini□Ahidemaru.dat,É<L‰¨,μ,Ä,ç,½“à-  
e,ð,·,×,ÄfçfwfXfgfŠ,É<L~^  
□@□@,·,é,æ,κ,É,μ,½□B  
□|□@fçfwfXfgfŠ‘€□ì,Ìf}fNf□  
□|□@fŠf\_fCfçfNfg‰Å“\,Èfvf□f0f‰f€ŽÀ□s  
□|□@ŽŸ,Ì□GŠŪ,à‘±,¨,ÄçŸ□ö  
□|□@Unicode/EUCftf@fCf<,ð•İŠ·f□□[fh/fZ□[fu,Å,«,é  
□@□@□iUnicode,Ì“ü-Í,Í,Å,«,Û,¹,ñ□j  
□|□@□F,ÌŽw‘è,ÌUI,ª•İ,í,Á,½  
□@□@fñfCfJf‰□[^È□ã,Ì□ê□#□A32K□F□`1677-œ□F,©,ç□F,ð‘I,×,é

□GŠŪ32,Í□A□GŠŪ,Ìfo□[fwf#f“fAfbfv^μ,ç  
,Å,·□B□GŠŪ,Ìfo□[fwf#f“fAfbfv,Í-³-  
¿,È,Ì,Å□A□GŠŪ,É‘-<à,μ,½□l,Í□GŠŪ32,à‘ç‰Á,Ì‘-<à,È,μ,Å-~-  
p,Å,«,Û,·□B  
□GŠŪ,ÌŽg,í,È,ç,¨,ç,à□GŠŪ32,ðŽg,κ□l,à□A□GŠŪ,É,Å,ç

,Ä' - < à, μ, Ä, ,  $\frac{3}{4}$ , <sup>3</sup>, ç □ B



ftf@fCf < □ \ □ □ -

HMNT155

LZH

453,395

96-01-19

8:50



□GTerm for Windows95 / □GTerm for WindowsNT Version

3.06

インストールの実行



Žû~^ffBf@fNfgfŠ DISC1:\OLS\WINNT\HTNT306



□ìžò □Ä“; □G•v ž□  
<http://www2.mitene.or.jp/maruo/>



“à-e

□GTerm, ì□Đ%î

□@□GTerm , Í□AWindows95/WindowsNT , ì, à, Æ, Å“®□ì, . , é'Ê□Mf\  
ftfg, Å, . □B□u, Đ, Å, ½□[ , p□v, Æ”%<sup>1</sup>, μ, Å, , ¾, <sup>3</sup>, ç□B, ±, ±, Å, Í, ±  
, Ì□u□GTerm for Windows95□v, ð'P, É□GTerm, ÆÇ<sup>3</sup>/<sub>4</sub>, π, ±, Æ, É, μ, Ü, . □B

□@□GTerm for Windows95 / □GTerm for WindowsNT, Í□A□]-  
^, ÌWindows3.1-p, Ì□GTerm, ð□AWindows95/WindowsNT-  
p, É'â•□, É□ì, è•Ï, |, ½□GTerm, Å□AWindows95/WindowsNT, Ì□V<@“\  
, ð'â•□, Éžæ, è“ü, ê, Å, ç, Ü, . □B

□@□]-^, ÌWindows3.1, Å□GTerm, ð“®□ì, <sup>3</sup>, <sup>1</sup>, é, É, Í□A□GTerm for  
Windows Version 2.19^Ê%<sup>o</sup>, ð, <sup>2</sup>-~-p, , ¾, <sup>3</sup>, ç□B

□@□GTerm for WindowsNT, Í□AWindowsNT  
3.51^Ê□ã, Å“®□ì, μ, Ü, . □BWindowsNT3.1, Ü, ½, ÍWindowsNT  
3.5, Å, Í“®□ì, μ, Ü, <sup>1</sup>, ñ□B

□@□GTerm, ÍfVfFfAfEfFfA, Å, . □BÇp'±  
, μ, Äžg, π□ê□‡, Í□A, “<à5000%~ , ð□ìžò, É'-<à, . , é•K-v, <sup>a</sup>, , è, Ü, . , <sup>a</sup>□  
AZž-p, Äžg, π□ê□‡, Í-<sup>3</sup>-ž, Å, . □B

□@□GTerm, Ì“Á'¥, Í^Ê%<sup>o</sup>, Ì'Ê, è, Å, . □B

- 'Ê□Mf\  
ftfg, Æ, μ, Ä•K-v, È<@“\  
, Í, Ü, Æ, ñ, ÇfTf|□[fg, μ, Ä, ç  
, é, Ì, Å□A, Æ, è, , |, . □GTerm, <sup>a</sup>, , é, Ífpf\  
fRf“'É□M, Å•s•Ö, Í-  
<sup>3</sup>, ç□i, Æžv, π□j□B

-□GTermAPI,Æ,ç,∞□AfAvfšfP□[fVf‡f“fvf□f0f  
%f~f“f0fCf“f^ftfF□[fX,ð”õ,!,Ä,ç,Ä□A,»,ê,ð~–  
p,μ,½fI□[fgfpcf□fbfgfvf□f0f%f€,âNIFTY-Serve–  
p,İfifrQ□[fVf‡f“f\ftfg□Af□□[f<ŠÇ–□f\  
ftfg□Af`fffbfgfAf\_fvf^,È,Ç□A‘½□”,İŠÖ~AfAvfšfP□[fVf‡f“,â, ,  
é□B

-“ÆŽ©,İfXfNfšfvfgÆ¼Æê,ð”õ,!,Ä,ç  
,Ä□A,»,ê,ðŽg,Á,ÄŽ©•ª,ÅfI□[fgfpcf□fbfgfvf□f0f%f€“™,ª□ì□–  
%Â”\□B

-□,‘–’Ê□MŽž‘ã,É‘Î%ž,μ,Ä□A’x,ê,Ì,È,çfXfNf□□[f<,ðŽÀÆ»,μ,Ä,ç  
,é□B’Ê□M’–“x,ÉfXfNf□□[f<,ª’Ç,ç,Ä,©,É,-  
,È,é,ÆŽ©“®“I,É•;□”□s,Ü,Æ,ß,ÄfXfNf□□[f<,. ,é,æ,∞,É,È,é□B

-telnet□Ú‘±,ðfTf|□[fg,μ,Ä,ç  
,Ä□AVT100ÆÝŠ·,İf^□[f~fif<,Æ,μ,Ä,àŽg,!,é□B

-□Á‘â,Á10–æ□s,Ü,ÅfofbfNfXfNf□□[f<,ª,Á,«,é□B

-fvfFfAfEfFfA,Æ,μ,ÄöŠJ,μ□Aft□[fU,©,ç,Ì–v–],É,æ,Á,Ä□í,É□i  
%»μ,Ä,Ä,–,Ä,ç,é□B,μ,©,àfo□[fWf‡f“fAfbfv,ª–³–¿□BNIFTY-  
Serve,İ%ï<cŽº,ÅfTf|□[fg,à□s,í,ê,Ä,ç,é□B



ftf@fcf<□\□–

HTNT306

LZH

360,158

96-02-20

18:16



1.55 %pĒĒGŠŪi~fLfbfg for GŠŪfGffBf^32 for WindowsNT

ファイルのコピー



Žû~^ffBfĒfNfgfŠ DISC1:\OLS\WINNT\MARU0155



ižò Ā“i G•v ž  
<http://www2.mitene.or.jp:80/maruo/>



“à-e

@, ±, ê, Í%pĒĒGŠŪimaruo.exej~  
 p, ĩ••ªftf@fCf<, »Ī¼, Å, •B^È%º, ĩftf@fCf<, ªŠÜ, Ü, ê, Ä, ç, Ü, •B

@makemaru.exe ... %pĒĒGŠŪi~p••ª  
 @maketags.com ...  
 %pĒĒ”Åhidetags.exei~p••ª  
 @makebar.com ...  
 %pĒĒ”Åhidembar.dlli~p••ª

@makemaru.exe, ÍÅhidemaru.exe, ©, ç, ĩ••ª, É, È, Á, Ä, ç  
 , Ü, •Bhidemaru.exe, Ē“~, ¶ffBfĒfNfgfŠ, ÅAMS-  
 DOS, ĩfRf}f“fhfvf“fvfg, ©, çumakemaru.exeØÅ°Ýv, Ē, â, é, ĒAma-  
 ruo.exe, ªi~, º, ê, Ü, •B

@“~  
 l, ÉAmaketags.com, Íhidetags.exe, ©, çmarutags.exe, ði~, µAma-  
 kebar.com, Íhidembar.dll, ©, çmarubar.dll, ði~, µ, Ü, •B

@marutags.exe, Ēmarubar.dll, ÍA, »ê, ¼, êhidetags.exe, Ēhidemb-  
 ar.dll, É¼’0, ð•ĪX, µ, Åžg, Á, Ä, ¼, çB, »Ī, Ü, Ü, ĩftf@fCf<-  
 ¼, Å, Ížg, |, Ü, ¹, ñB



ftf@fCf<~

MARU0155 LZH

85,338

96-01-19

8:50





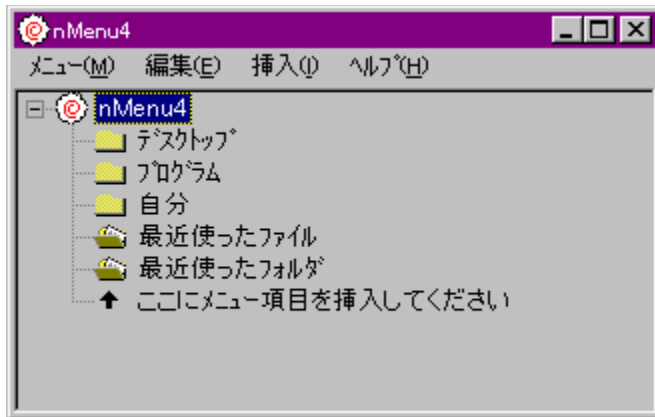


nMenu4 ver 1.0.1.0

インストールの実行



%æ-ÉfCf□□[fW



Žû~^ffBfCfNfgfŠ DISC1:\OLS\WINNT\NM41010



□ìžò ,È,é,ç Ž□



“à-e

Windows NT4.0/95,Å“@□ì,·,é□Aft□[fUfJfXf^f}fCfY%Å”\,Èf|  
fbfvfAfbfvf□fjf...□[,Å,·□B  
□@256□FŠÅ<<,Å,à“®,<<,Û,·,ª□AfnfCfJf%□[^È□ă,đ□,,□\$ ,μ,Û,·□B



ftf@fCf<□\□~

NM41010 EXE 139,164 96-12-19 8:23



