

Windows 95ŠÖ~A fIf“f%fCf“f\ftfgfEfFfA

Visual Basicf%f“f^fCf€ fCf“fXfg□[f<-pfvf□f0f%f€



POWER REPORT“Á□»fJf€f“f\_□[ '97 2€Ž



f0f%ftfBfbfNfrf...□[fA“Á□WfIf“f%fCf“f\ftfgfEfFfA



ACDSee '95 V1.0



Windows95\_2~\_Ëp°±-p%æ'æÛ°Àp°DLL□W Version 1.3



GV.EXE f}f<f`ftfH□[f}fbfg'Î%ž%æ'æf□□[f\_□[ Ver 0.76



%æ'ærf...□[f□ Susie for Win32 Ver0.36



Susie32 plug-in library Ver0.05

POWER REPORT“Á'I □V□ìfIf“f%fCf“f\ftfgfEfFfA



PowerToys, ð“ú-{€Ê%», ., é(□æTweak UI)





LHAFt [fefBfŠfefB,R,Q@Ver1.00



WinLM32 ^3 kİş²ÙEÖYÃÄÝ½EİBÛ, p×ÑiWin32'Î%Ž"ÅjVer 1.21



LMZIP32.DLL WinFM32 & WinLM32 ZIP'ÆÉ^³k/%đ"€DLL Ver 1.10



feJfXfNfgfbftKfAfCfRf"fjff... for Win95 v1.02



FreeCell Try Recorder Ver 2.20



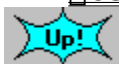
**POWER REPORT"Á'I 'è"ôfIf"f%fcf"f\ftfgfEjFfa**



EmTerm95 Ver3.17



ğŞÛfL[f[fhf`fFf"fwff V2.2



LHMELT Ver0.64



UNLHA32.DLL Ver0.71



秀 GŠÛfGfffBf^ for Win95 Ver2.13



%pÆê GŠÛ ì ñ fLfbfg for GŠÛfGfffBf^ Ver2.13



GTerm Ver3.15 for Win95/NT



GTermf%f`f` Version 1.0



GŠÛ%»Æv%æ Version 2.03



GÆ©,¡ for Windows95 Version 6.1



GCaps for Windows95 Version 4.2



DDwin32 Ver1.56



,c,n,b,d,w,d .DOCftf@fCf<,İŽ©“®”»•Ê



LHASA Ver 0.09



UNARJ32.DLL Ver 0.07



DDwin32 Ver1.56

インストールの実行



検索機能



検索対象のディレクトリ: DISC1:\OLS\WIN95\DDW156



検索結果: 1件見つかりました



検索結果

### 検索結果

検索結果: 1件見つかりました  
検索対象のディレクトリ: DISC1:\OLS\WIN95\DDW156  
検索キーワード:   
検索開始  
全文  
目録  
画像  
全て 解除 表示  
連続表示 質問はNIFTY-Serve FWINMMへお願いします 後退

検索結果: 1件見つかりました  
検索対象のディレクトリ: DISC1:\OLS\WIN95\DDW156  
検索キーワード:   
検索開始  
全文  
目録  
画像  
全て 解除 表示  
連続表示 質問はNIFTY-Serve FWINMMへお願いします 後退

v, Å, · □ B f A f \_ f v f ^, Í □ A f C f R □ [ f h " X □ A f I □ [ f f f B f I " X "™, Å □ w " ü, μ, Ä, -  
, ¾, ³, ç □ B □ i, ½, ¼, μ □ A 8 c m C D, ð, » , Ì, Ü, Ü Ž g, !, é f h f % f C f u, Å, Í • K - v, , è  
, Û, ¹, ñ □ B □ j

, Å, «, é, ±, Æ  
Ë ÿ □ ö Š Ö ~ A

□ E

Ë © □ o, μ Ê Ê Ë ÿ □ ö □ A □ ð Ë □ Ë ÿ □ ö □ A Ë © □ o, μ Ê Ê □ ð Ë □ E f N f □ f X Ë ÿ □ ö □ i D D w i n, Å, Í  
, ±, ê, ç, ð ' □ □ Ì, μ, Ä f C f " f f f b f N f X Ë ÿ □ ö, Æ Ë ¾, » □ j

□ E f □ f j f ... □ [ Ë ÿ □ ö □ A • ; □ ð Ë ÿ □ ö □ A f 0 f % f t f B f b f N Ë ÿ □ ö □ A % æ -  
Ê Ê Ê Ë ÿ □ ö □ A ' ¼ □ ' □ ð Ë ÿ □ ö

□ E ' S • ¶ Ë ÿ □ ö

□ E ^ ê Š ± Ë ÿ □ ö

□ E ' â - Ê Ë ÿ □ ö □ i Š Y " - 3 2, 0 0 0 Ê ê, Ü, Å □ j % Å " \

□ E f C f " f f f b f N f X Ë ÿ □ ö, Æ ' S • ¶ Ë ÿ □ ö, Å A N D □ A O R □ A N O T □ ð Ë □ Ž w ' è

□ E ' ¼, Ì f A f v f Š f P □ [ f v f # f " , ©, ç f z f b f g f L □ [ , Ê, æ, é Ë ÿ □ ö < @ " \

□ i 1 6 f r f b f g " Å, Ì, Ý □ j

□ E f N f Š f b f v f { □ [ f h Ê o - R, Ì Ž © " @ Ë ÿ □ ö < @ " \

• \ Ž ! Š Ö ~ A

□ E f □ f j f ... □ [ □ A f \_ f C f A f □ f 0, Ì % p Ê ê • \ Ž !

□ E % Å • Ì f s f b f ` f t f H f " f g Ž g - p % Å " \

□ E Ë ÿ □ ö Ê < % Ê, Ì • \ Ž !, Ê ~ A ' ± f, □ [ f h □ i " d Ž q f u f b f N f Š □ [ f \_ □ [ , Æ " ^ , ¶ • \

Ž ! • û - @ □ j, Æ ¶ € - Ú f, □ [ f h □ i Ë ÿ □ ö, μ, ½ □ € - Ú, ¾, ^ , ð □ Ø, è • ª, ^ , Ä • \

Ž !, • , é f, □ [ f h □ j, ª Ž g - p % Å " \

□ E % p • ¶, Ì f □ □ [ f h f % f b f v

□ E < Ö ' ¥ □ ^ - □

, » , Ì ' ¼

□ E Ë ÿ □ ö Ê < % Ê f t f @ f C f < □ o - Í □ i f □ f j f ... □ [ , Ì □ u f G f f f B f ^ < N " @ □ v □ j

□ E % æ ' æ, ð Š Ü, P Ë ÿ □ ö Ê < % Ê, Ì f N f Š f b f v f { □ [ f h, Ö, Ì • ; Ž Ê

□ E □ " à " Å □ A Š C Š O " Å □ i E B G □ j f ^ f C f g f < , Ì Ž © " @ □ Ø, è ' Ö, !

□ E % p ~ a □ Ì ~ a % p Ž © " @ □ Ø, è ' Ö, ! < @ " \

□ E • ; □ " D D w i n, Ì " ^ Ž Ž Ž g - p

□ E C D, Ì " à - e, ð f n □ [ f h f f f B f X f N, É f R f s □ [ , μ, Ä Ž g - p % Å " \

□ E E P W I N G < K - ñ C D - R O M, Ì % ¹ □ ° □ o - Í

, Å, «, È, ç, ±, Æ

□ E " d Ž q f u f b f N, Ì % ¹ □ ° □ o - Í

□ E □ F Ê © - { , Ì • \ Ž !

□ E ^ ó □ ü

□ ! f C f " f X f g □ [ f < □ I - ¹ Ê ä □ A ç I N S T \_ T M P £ f t f H f < f \_ , Í □ í □ æ, μ, Ä, , ¾, ³, ç



ftf@fCf<\□□-

DDW156  
8:20

LZH

603,319

96-07-16



,c,n,b,d,w,d .DOCftf@fCf<,iZ@“@”»•Ê

インストールの実行



%æ-ÊfCf[]fW



Žû~^ffBf@fnfgfŠ DISC1:\OLS\WIN95\DOCEX210



□ižò □, < '¼□\□i, ÿ, å, , ♯, ñ□j Ž□  
<http://www.sm.rim.or.jp/~naoto/>



“à-e

□@DOCEXE.EXE , ÍŠg'£žq DOC , ìftf@fCf<, ð□AMicrosoft Word -  
p•¶□'ftf@fCf<, È, Ì, ©fefLfXfgftf@fCf<, È, Ì, ©, ð”»•Ê, μ□A<N“@, ., é  
fAfvfŠfP□[fVf+f“ , ðž@“@“I, É□Ø, è'Ö, †, éft□[fefBfŠfefBfvf□f0f  
%f€ , Å, .□B

□@DOCEXE , ðžg, ✖, Æ□A•□'Ê, ìfefLfXfgftf@fCf<, ðf□□[fhfpfbfh, â  
MS-Word , Å“Ç, Ý□ž, Þžž, Ì'Ö, ¿žžŠÓ, ©, ç%ð•ú, ³, é, Û, .□B



ftf@fCf<□\□~

DOCEX210 LZH

23,980

96-09-11

20:26

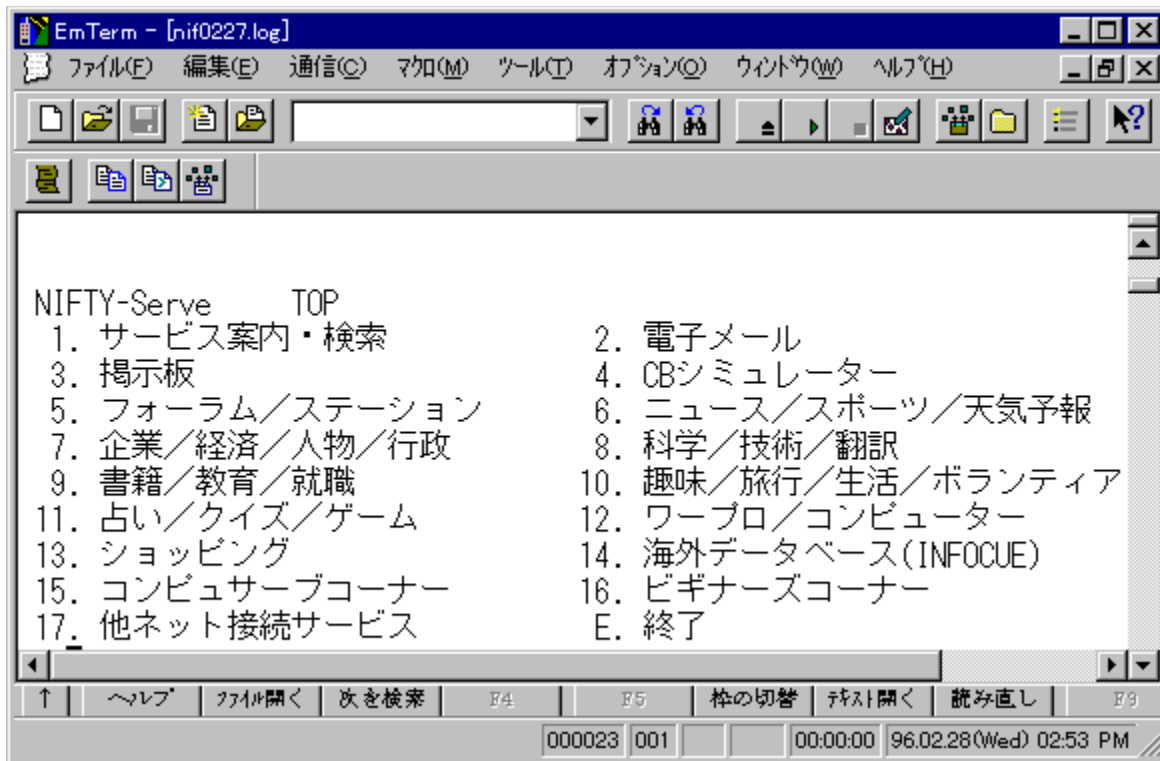




EmTerm95 Ver3.17



%æ-Éfcf[]fw



Žû~^ffBf€fnfgfš DISC1:\OLS\WIN95\EMT317



□ižò -L€À%ižĐfgf€f\ftfg



“à-e

EmTerm 95 ,Í□AWindows 95 ,É,ç,¿'□, 'Î  
 %ž,µ□A^À'è"x"²€Q,İ32frfbfg,İ'è"Ô'Ê□Mf\ftfg,Å,·□BEmTerm 95  
 ,É,İŽŸ,İ,æ,α,È“A'·,ª, ,è,Û,·□B

□š^À'è,μ,½□, '¬'É□M  
□@Win32f}f<f`fXfƒfbfh,ð~--  
p,μ,½"Æ"Á,Ì'É□M•ûŽ®,É,æ,è□A"ñ□í,É□, '¬,É"®□ì,μ,Û, ·□B'â-  
Ê,Ìf□fbfZ□[fW,ð"Ç,ñ,Å,ç,é,Æ,«,àƒy%ö,ÉfXfNf□□[f<,μ□A,ç  
,ç,¾,¿,ðŠ',¶,³,¹,Û,¹,ñ□B^ê"xŽg,Á,Ä,Ý,é,Æ□A,â,ß,ç,ê,È,,É,é  
%ö"K,³,Å, ·□B

□š□[ŽÀ,μ,½f^□[f~fif<<@"\  
□@Color ANSI, VT-100, VT-52 '[—fGf~f...fƒ□[fvf#f",â□ASHIFT  
JIS, □VJIS, <ƒJIS, NEC JIS, EUC,È,Ç,Ì"ú-{ƒêfR□[fh'Î  
%ž,È,Ç□Af^□[f~fif<,Æ,μ,Ä,Ì{-^,Ì<@"\  
,Û, ·,Ï,Å□A-á,|,Î□AUNIX,Ì'[—,Æ,μ,Ä,à-â'è,È,-  
"®□ì,μ,Û, ·□B,à,¿,ë,ñ□AANSI,É'Î%ž, ·,é'n•û,âŠČŠO,ÌBBS,Å,àfJf  
%□[•\Ž|,Å%ö"K,É,²~--p,ç,½,¾, ·,Û, ·□B

□šWindows 95 TAPI ,É'Î%ž  
□@TAPI ,É'Î%ž,μ,Ä,ç,Û, ·,Ï,Å□A-  
á,|,Î□Af\_fCf,,f<,Ìfvf□fpfefB,ð•Ï□X, ·,é,¾, ·,Å□A□'"Ô□t,âžsŠO<Ç  
"Ô,ªŽ©"®"I,É•Ï□X,³,ê,Û, ·□B,Û,½□A'¼,ÌTAPI,É'Î%ž,μ,Ä,ç,éFAXf\  
ftfg,ðŽö□M'Ò<@,³,¹,È,ª,ç□A'É□M,ð□s,±,  
,Æ,à,Å,«,Û, ·□B,à,¿,ë,ñ□A□]-^,Ï,æ,±,Éf,fff€,ð'¼□Ú□§ƒä, ·,é,±,  
,Æ,à,Å,«,Û, ·□B

□šTelnet ,É'Î%ž  
□@Telnet ,Å,Ï□Ú'±,à□AfVfŠfAf<ƒo-R,Æ'S, ·,Ï,í,ç,È,çŠ'Šo,Åžg-  
p,Å,«,Û, ·□B,»,Ï□ê□±,Å,à□A"']-fvf□fgfRf<,É,æ,éfofCfifŠ"']'-  
,ðfTf|□[fg,μ,Ä,ç,Û, ·□B'½□",Ì telnet -pf^□[f~fif<  
fEfBf"fhfE,ð"~Žž,É•\Ž|,μ□A•j□",ÌfzfXfg,Æ"~Žž,É□Ú'±  
,μ,Ä,à□A^À'è,μ,Ä"®□ì,μ,Û, ·□B•Đ•û,Å□AZMODEM ,Å"']'-  
,μ,È,ª,ç□A,à,±•Đ•û,Å B Plus ,Å"']'-, ·,é,Æ,ç,±žg,ç•û,à%Â"\  
,É,Ï,Å, ·□B

□š□, <@"\fGfffBf^"à'  
□@'É□Mf\ftfg,É,Í•K-v,ÉfGfffBf^,ª"à' ,μ,Ä,ç,Û, ·,Ï,Å□AEmTerm  
95 ,Æ•É,ÉŠO•"fGfffBf^,ð-p^0, ·,é•K-  
v,Í, ·,è,Û,¹,ñ□B,μ,©,à□AfefLfXfg,ð'-□M, ·,é□Ú,É•ö-  
~,È<Ö'¥•¶Žš,Ìžw'è<@"\□A-³□§ƒAUNDO&REDO<@"\□AOLE2fhf  
%fbf0□•fhf□fbfv<@"\  
□M,à"ñ□í,ÉŠÉ'P,Å, ·□B-á,|,Î□AfefLfXfg,Ì^ê•",ð'-  
□M,μ,½,ç□ê□±,Í□A,»,Ì•"ª,ðf}fEfX,Å'I'ð,μ□Af^□[f~fif<fEfBf"f  
hfE□ã,Éfhf%fbf0□•fhf□fbfv, ·,é,¾, ·,Æ,ç,±žèƒy,³,Å, ·□B

□šLHAftf@fCf<, Ì%ð"€<@"\  
□@LHA,Ï□'ƒÉftf@fCf<,ðf\_fEf"f□□[fh, ·,é,Æ□AŽ©"®"I,É%ð"€  
,μ□A,μ,©,à□A%ð"€,μ,½ftf@fCf<,ÌftfHf<f\_,ðž©"®•\Ž|,³,¹,é,±,  
,Æ,à%Â"\  
,Å, ·□B,Û,½□A'É□Mf□fO,Ìftf@fCf<,ð"NƒŽ"ú,Ìƒ` ,Å•Û'¶,μ,Ä□AƒŽ•Ê,

É<sup>3</sup> k, μ, ÄŠÇ–, ., é, ±, Æ, à, Å, «, Ü, . □B (UNLHA32.DLL, <sup>a</sup>•K–v)

□šISHfefLfXfg, Ì•œÉ<sup>3</sup> <@”\  
□@’É□Mf□f0, ÉISH%»<sup>3</sup>, è, ½fefLfXfg, <sup>a</sup>, , é□ê□‡, Í□Af}fEfX, Å’I’ð, μ  
, Å□AISH•œÉ<sup>3</sup> fRf}f“fh, ð’I’ð, ., é, ¾, -, Å□A, »<sup>3</sup>, Ì•”•<sup>a</sup>, ð, ., ®, É•œÉ<sup>3</sup>, .  
, é, ±, Æ, <sup>a</sup>, Å, «, Ü, . □B (ISH32.DLL, <sup>a</sup>•K–v)

□š□, <@”\f}fNf□, Ì“<□Ú  
□@□‡Év182Ží–p, à, ÌfRf}f“fh, <sup>a</sup>–~–p, Å, «, é□, <@”\f}fNf□ EmTerm  
Basic , <sup>a</sup>“<□Ú, <sup>3</sup>, è, Å, †, Ü, ., Ì, Å□AfI□[fgfpcf□fbfg, È, ÇŽ©–  
RŽ©□Ý, É’É□M, ð’É, é, ±  
, Æ, <sup>a</sup>, Å, «, Ü, . □B, Ü, ½□Af}fNf□, Ìfffofbf0, Í□A□\•¶fJf%□[•\Ž|, Ì“à’  
fGfffBf^, ð~–p, μ, ½“□□‡SJ”ŠÅ««<sup>3</sup>, Å□s, †, Ì, Å□AVisual Basic  
•À, Ý, Ì%ö“K, È’É□ì□«<sup>3</sup>, ðŽÀ«»<sup>3</sup>, μ, Ü, μ, ½□B, Ü, ½□A’½, -  
, Ìft□[fU□[ , ÌŠF, <sup>3</sup>, ñ, É, æ, Å, Å□ì, ç, è, ½ftfŠ□[ , Ìf}fNf□, <sup>a</sup>’½□“œöŠJ,  
<sup>3</sup>, è, Å, †, Ü, . □B

□šEmTerm for Windows, ©, ç, Ì^Ú□s, É, à”z–¶  
□@EmTerm 95 , Í□AEmTerm for Windows , ÅŽg–p, μ, Å, †  
, ½□Af}fNf□, âEmTermftf@fCf< (Šg’fŽq, <sup>a</sup>.emt, Ìftf@fCf< )  
, <sup>a</sup>, »<sup>3</sup>, Ì, Ü, Ü–~–p, Å, «, Ü, ., Ì, Å□A16bitŠÅ««<sup>3</sup>, ©, ç, Ì^Ú□s, àŠy, Å, . □B

□š□%□SŽÒ, É, à^À□S□I  
□@Žâ–v, È’É□Mflfbfg (ASCII-NET, CompuServe, NIFTY-Serve,  
PANA-VAN Silk, PC-VAN, People, RIMNET, “úœoMIX)–  
p, ÌEmTermftf@fCf< , <sup>a</sup>•W□€’•”ö<sup>3</sup>, è, Å, †  
, Ü, . □BEmTerm, ðfZfbfgfAfbfv, μ, ½, ç□A“d~b”Ô□†, ÆID, ÆfpfXf□□[fh,  
<sup>3</sup>, |, , è, Ì, ., ®, É’É□M, <sup>a</sup>Žn, ß, ç, è, Ü, ., Ì, Å□A%□SŽÒ, É, à^À□S, Å, . □B

□š□[ŽÀ, μ, ½fTf|□[fg’Ì□\$  
□@NIFTY-Serve, PC-VAN, Ìftf|□[fgftfH□[f%f€  
, âfCf“f^□[flfbfg, Ìf□□[fŠf“f0fŠfXfg, ð’É, μ, Å□A’|“š, Ì□[ŽÀ, μ, ½f  
Tf|□[fg, ð□s, Å, Å, “, è, Ü, ., Ì, Å□A^À□S, μ, Ä–~–p, Å, «, Ü, . □B

□!fCf“fXfg□[f<□I–<sup>1</sup>œä□A†INST\_TMP£ftfHf<f\_ , Í□í□œ, μ, Å, , ¾, <sup>3</sup>, †



ftf@fCf<□\□~



GV.EXE f}f<f`ftfH[f}fbfg'Î%ž%æ'æf[f\_[] Ver 0.76



%æ-ÊfCf[]fw



Žû~^ffBfæfNfgfš DISC1:\OLS\WIN95\GV076



[]ž0 ,Æ,Ñ,½ Ž[]



“à-e

, ±, Ìf\ftfgfEjFfA, ÍAWindows95/NTã, Å, ç, ë, ç, ë, È  
æ'æftf@fCf<, ðœ©, é, ½, ß, Éì¬, µ, Ü, µ, ½B"Á'¥, Æ, µ, Ä^Èº, Ì, æ, x  
, È, à, Ì, ª, , è, Ü, ·B

E'½, , Ìf0f%ftfBfbfNftfH[f}fbfg, É'Îž  
Eæ'æff[f^, ð256/16F, Éœ, F, µ, Ä•\Ž!%Ä"\  
E•;%"æ'æff[f^, ÌŽ©"®~A'±•\Ž!  
Eæ'æff[f^, Ì%E^¶%ñ"]AŠg'å^k¬•\Ž!  
E•;%"æ'æff[f^, ÌŽ©"®~Aœ<•\Ž!  
Eff[f^'t, ÌfRf"fg•\Ž!  
EfhfLf...f"fgftf@fCf<•\Ž!  
E'Sæ-Ê-~p•\Ž!



ftf@fCf<¬\¬

GV076

LZH

231,385

96-12-03

23:52



□G Caps for Windows95 Version 4.2



%æ-ÊfCf□□lfw

秀Capsの設定

秀Caps for Windows95  
Version 4.2  
programed by 秀まるお  
PEH00775@niftyserve.or.jp

OK  
キャンセル  
ヘルプ  
終了(×)

英数→CapsLock  
 英数でカナOFF  
 半角/全角→Esc  
 変換→Space  
 無変換→カナ  
 ひらがな→漢字  
 右Ctrl→カナ  
 右Alt→漢字  
 漢字切り替え時にカナロックも切り替え  
 CtrlとCapsLockの入れ替え(101キーボードのみ)

カーソル移動の加速  
遅延時間: 250 ミリ秒  
リピート間隔: 50 ミリ秒



Žû~^fffbf@fNfgfŠ DISC1:\OLS\WIN95\HCAPS420



□ižò □Ä“i □G•v Ž□  
<http://www2.mitene.or.jp/maruo/>



“à-e

□u□GCaps95□v, Í□Afl□[f{□[fh'€□ì, ÉŠÖ~A, μ, ½ŠeŽí, Ì<@"\ , ð'ñ<ÿ, μ, Ü, ·□B^È%°, Ì, æ, x, È<@"\, ^, , è, Ü, ·□B

□E□@□u%p□"□vfl□[ , ð□uCapsLock□vfl□[ , É, μ, Ä, μ, Ü, x□BShiftfl□[ , ð %ÿ, ^, È, , Ä, àCapsLock, ^□Ø, è'Ö, |, ê, é, æ, x, É, È, é

□E□@□u%p□"□vfl□[ , ð%ÿ, μ, ½Žž, ÉŽ©“®“I, ÉfJfif□fbfN%ð□æ

□E□@□u"¼Šp/'SŠp□vfl□[ , ð□uEsc□vfl□[ , É, μ, Ä, μ, Ü, x□B98, Ìfl□[f{□ [fh, ÉŠμ, ê, ½□l, É, Í, Æ, Á, Ä, à•Ö~

□E□@□u, Ð, ç, ^, È□vfl□[ , ð□uŠ;Žš□vfl□[ , É, μ, Ä, μ, Ü, x□B, ©, ÈŠ;Žš•İŠ ·, Ì<N“®, ^Šy, É, È, é

□E□@□u•İŠ·□vfl□[ , ðSpacefl□[ , É, μ, Ä, μ, Ü, x□B

%pÆéfl□[f{□[fh, â98, Ìfl□[f{□[fh, ÉŠμ, ê, ½□l, É, Í, Æ, Á, Ä, à•Ö~

□E□@□u-³•İŠ·□vfl□[ , ðfJfifl□[ , É, μ, Ä, μ, Ü, x

□E□@, ©, ÈŠ;Žš•İŠ·on/offŽž, ÉŽ©“®“I, ÉfJfif□fbfN□Ø, è'Ö, |, à, ·, é

□E□@%Ectrlfl□[ , ðfJfifl□[ , É, μ, Ä, μ, Ü, x

□E□@%Ealtfl□[ , ðŠ;Žšfl□[ , É, μ, Ä, μ, Ü, x

□E□@Ctrlfl□[ , ÆCapsLockfl□[ , ð“ü, ê'Ö, |, Ä, μ, Ü, x□B□i101fl□[f{□[ fh, Ä, Ì, Ý□j

□E□@fJ□[f\ f<^Ú“®, ð%Á'¬, ·, é□B

□@, ±, ê, ç, Ì<@"\, Í, » , ê, ¼, êON/OFF, ·, é, ±, Æ, ^, Å, «, Ü, ·□B



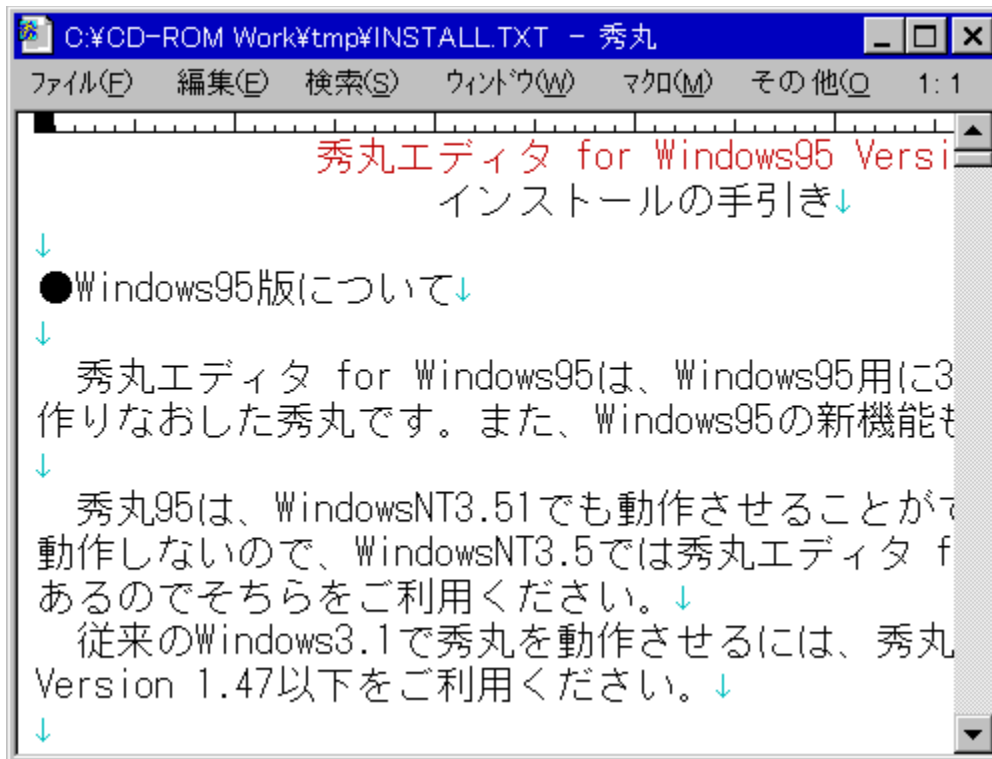
ftf@fCf<□\□-



秀丸エディタ for Win95 Ver2.13



秀丸エディタ for Win95 Ver2.13



DISC1:\OLS\WIN95\HM213



http://www2.mitene.or.jp/maruo/



秀丸エディタ for Win95 Ver2.13

秀丸エディタ for Windows95, 32bit版  
インストールの手引き  
秀丸95は、WindowsNT3.51でも動作させることが出来ます。ただし、WindowsNT3.5では秀丸エディタ for Windows95版は動作しないので、WindowsNT3.5では秀丸エディタ for Windows3.1版をご利用ください。従来のWindows3.1で秀丸を動作させるには、秀丸 Version 1.47以下をご利用ください。



, à 'â•□, ÉŽæ, è“ü, ê, Ä, ç, Ü, ·□B

□@□GŠŮ95, Í□AWindowsNT3.51, Å, à“®□ì, ³, ¹, é, ±

, Æ, ð, Å, «, Ü, ·□BWindowsNT3.5, Å, Í

“®□ì, µ, È, ç, Ì, Å□AWindowsNT3.5, Å, Í□GŠŮfGffffBf^ for

WindowsNT, ð•Ê“r-p^Ó, µ, Ä

, , é, Ì, Å, »,, ç, ð, ²-~-p,, ¾, ³, ç□B

□@□]-^, ÌWindows3.1, Å□GŠŮ, ð“®□ì, ³, ¹, é, É, Í□A□GŠŮfGffffBf^ for  
Windows

Version 1.48^È%º, ð, ²-~-p,, ¾, ³, ç□B

□!fCf“fXfg□[f<□I-¹Æä□AçINST\_TMP£ftfHf<f\_, Í□í□œ, µ, Ä, , ¾, ³, ç



ftf@fCf<□\□-

HM213

LZH

541,468

96-09-20

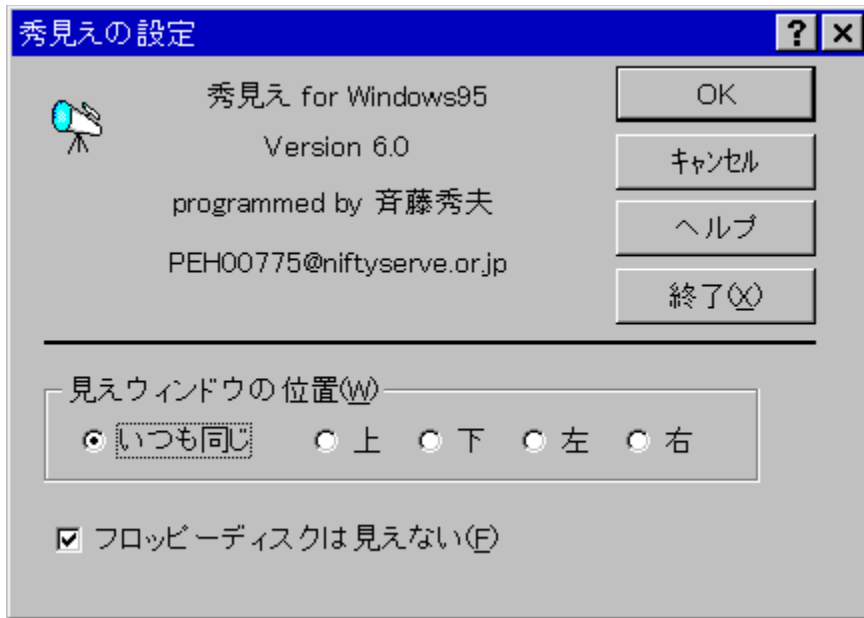
14:51



□G©,| for Windows95 Version 6.1



%æ-ÊfCf□□lfW



Žû~^ffBf@fNfgfŠ DISC1:\OLS\WIN95\HMIE610



□ižò □Ä“; □G•v Ž□ <http://www2.mitene.or.jp/maruo/>



“à-e

□@□u□G©,| for Windows95□v,Í□AWindows3.1-  
p,Í□GfSf~fSf~,ðWindows95-p,É□ì,è,È,¨,μ,½•¨,Å,·□B^È%º,ì“Á'¥  
,ª, ,è,Û,·□B

□EfAfvfŠfP□lfVf#f“,Ìf\_fCfAf□fOf{fbfNfX't,Åftf@fCf<-¼,ð“ü-





秀丸化計画 Version 2.03



秀丸化計画



Źû~^fffbf@fnfgfš DISC1:\OLS\WIN95\HMIZE203



Źžò ŹG,Û,é,“ Źž  
<http://www2.mitene.or.jp/maruo/>



“à-e

ŹGŠÛ»»Ev%æ, ÍŹAŹGŠÛ^ÈŠ0, ÌfEfBf“fhfE, àŹA%Â”\  
, ÈÈÀ, èŹGŠÛ, Æ“~, ¶, æ, ¨, È‘€Źì, ª, Å, «, é, æ, ¨, ÈŠg'£, ·, é, ±, Æ, ð-  
Ū“I, Æ, µ, ½Źí'“fAfvfŠfPŹ[fVf±f“, Å, ·ŹB  
, ½, Æ, |, ÎŹGŠÛ, ÌfLŹ[Š,, è“- , Ä, ÅCtrl-E S D X, ÉfJŹ[f\

f<^Ú“®,đŠ,,è“-,Ä,½□ê□#□A‘¼,ÌfAfvfŠfP□[fVf#f“,Å,à“-l,ÉCtrl-  
E S D X ,ÅfJ□[f\^f<^Ú“®,μ,½,,È,é,à,Ì,Å,·□B□GŠŮ»Æv  
%æ,Å,Í□A,»,Ì,æ,κ,Èfj□[fY,đ%Å”\,ÉÆÀ,èfTf|□[fg,μ,Û,·□B

,<sup>3</sup>,ç,É□A‘¼,ÌfAfvfŠfP□[fVf#f“,É,Í-{-^--<sup>3</sup>,ç<@”\  
,Å□GŠŮ,ªŽ□,Á,Ä,ç,é<@”\,à□A,»,ÌfAfvfŠfP□[fVf#f“,É•t%Á,·,é,±  
,Æ,à-Ú“I,Æ,μ,Ä,ç,Û,·□B,½,Æ,|,Î□GŠŮ,Ï□uÊÝ¶,É•ÏŠ·□v,È,Ç,Ï-  
L•x,È•ÏŠ·<@”\,ª‘¼,ÌfAfvfŠfP□[fVf#f“,Å,àŽg,|,é,Æ•Ö-~ ,Å,·□B

□GŠŮ»Æv%æ,đ“®□ì,<sup>3</sup>,<sup>1</sup>,é,É,Í□A, ,ç,©,¶,ß□GŠŮfGfffBf^,ªfCf“fXf  
g□[f<,<sup>3</sup>,ê,Ä,ç,È,-,é,Î,ç,-,Û,<sup>1</sup>,ň□B



ftf@fCf<□\□-

HMIZE203 LZH

27,286

96-07-30

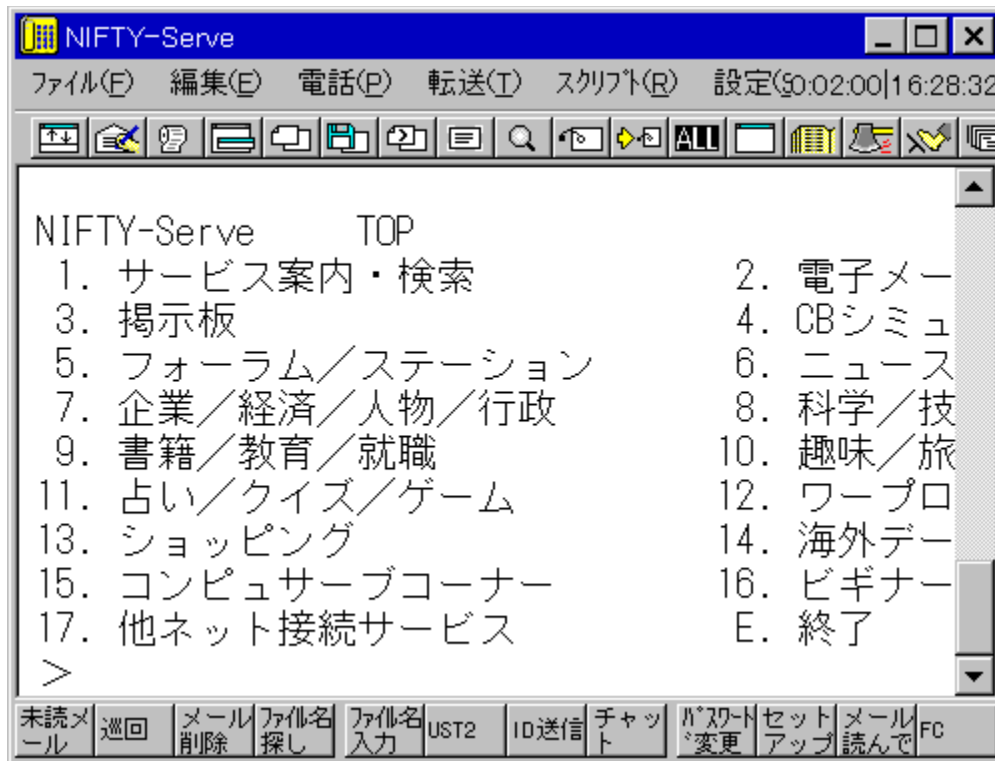
11:01



□GTerm Ver3.15 for Win95/NT



‰æ-Êfcf□□[fw



Žû~^ffjBf¢fNfgfŠ DISC1:\OLS\WIN95\HT315



□ìžò □ö“; □G•v ž□  
<http://www2.mitene.or.jp/maruo/>



“à-e

□@□GTerm , í□AWindows95/WindowsNT , Ì, à, Æ, Å“@□ì, ., é'Ê□Mf\  
ftfg, Å, .□B□u, Ð, Å, ½□[, P□v, Æ"‰¹, µ, Ä, , ¾, ³, ¢□B, ±, ±, Å, Í, ±  
, Ì□u□GTerm for Windows95/WindowsNT□v, ð'P, Ê□GTerm, Æ¢¾, ±, ±

,Æ,É,μ,Û,·B

[@]GTerm for Windows95/WindowsNT,Í[A]-^,ÌWindows3.1-  
p,ÌGTerm,ðAWindows95/WindowsNT-  
p,É'â•,Éì,è•Ï,|,½GTerm,ÅAWindows95/WindowsNT,ÌV<@"\  
,ð'â•,ÉŽæ,è"ü,ê,Ä,ç,Û,·B

[@]-^,ÌWindows3.1,ÅGTerm,ð"®ì,<sup>3</sup>,<sup>1</sup>,é,É,ÍAGTerm for  
Windows Version 2.19^È%º,ð,<sup>2</sup>-~p,,<sup>3</sup>/<sub>4</sub>,<sup>3</sup>,çB

!fCf"fxfg[f<I-¹æãAçINST\_TMP£ftfHf<f\_,Ííœ,μ,Ä,,<sup>3</sup>/<sub>4</sub>,<sup>3</sup>,ç



ftf@fCf<\-~

HT315

LZH

395,687

96-07-30

11:04



□GTerm%f`f` Version 1.0

ファイルのコピー



Žû~^ffBf&fNfgfŠ DISC1:\OLS\WIN95\HTLAUNCH



□ìžò □Ä“i □G•v ž□  
<http://www2.mitene.or.jp/maruo/>



“à-e

□@□u□GTerm%f`f` Version 1.0□v,Í□GTerm,Ìf□ffj...  
□[,Ì't,ÉfAfvfŠfP□[fVf#f“,ð“o~^,μ,½,è□AfXfNfŠfvfgftf@fCf<,ð“  
o~^,μ,½,è,Å,«,é,æ,π,É,·,éfAfhfCf“fAfvfŠfP□[fVf#f“,Å,·□B  
□@CD-ROM,ìžû~^ftf@fCf<,ð□GTerm-  
p,ÌfffBf&fNfgfŠ,ÉfRfs□[,μ□A□u□Ý'è□EfAfhfCf“fAfvfŠfP□[fVf#f“  
,ì“o~^...□v,Åhtlaunch.dll,ð“o~^,μ□A□u□GTerm,Æ,¢  
,Á,μ,å,É<N“®□v,à0N,É,μ,Ä,²~~p,,¾,¾,¾,¢□B



ftf@fCf<□\□~

HTLAUNCH LZH

11,392

96-01-23

16:17



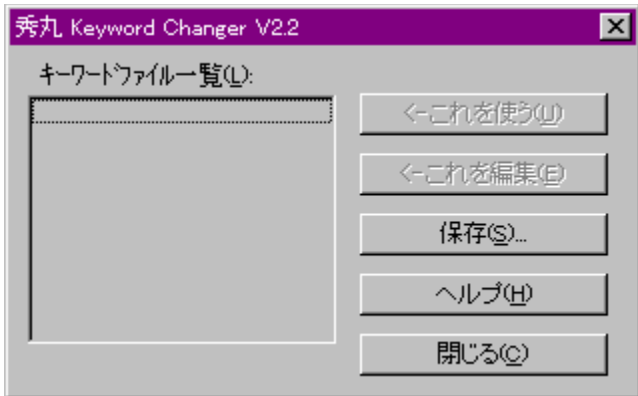


秀丸 Keyword Changer V2.2

ファイルのコピー



秀丸 Keyword Changer V2.2



秀丸 Keyword Changer V2.2 DISC1:\OLS\WIN95\KWCH22



秀丸 Keyword Changer V2.2 <http://www2.mitene.or.jp/maruo/>



秀丸 Keyword Changer V2.2

秀丸 Keyword Changer V2.2 ikwch.exe, ÁA秀丸 Keyword Changer V2.2, bE  
¼E<'²fL[f[f[h,Ì"à-  
e, ðfefLfxfgftf@fCf<E`Ž®, Á•Ù'¶, µ, ½, èAfefLfxfgftf@fCf<E`Ž®, Á  
•Ù'¶, ³, ê, ½"à-  
e, ð"Ç, Ý□ž, ñ, ÁE»Ý, Ì秀丸, ÌÝ'è, Æ, µ, ½, è, ·, é, ½, ß, ÌfAfvfšfP[fV  
f‡f", Á, ·□B

<@"\

, ±, ê, ðŽg, ✕  
□@•Ù'¶, ³, ê, Ä, †

, éfL[f][fhftf@fCf<, ð“Ç, Ýž, ñ, Å»Ý, ÌGŠÛ, Ì<'²·\  
Ž!fL[f][fh, Æ, µ, Û, ·B

, ±, ê, ð·òW  
@fL[f][fhftf@fCf<, ðGŠÛ, Å·òW, µ, Û, ·B

•Û'¶...  
@»Ý, ÌGŠÛ, ÉÝ'è, ³, ê, Ä, ç, é<'²·\Ž!fL[f][fh, ð·Û'¶, µ, Û, ·B

fL[f][fhf`fFf“fWff, ðGŠÛf}fNf, ©, çŽg, «·û-@  
@kwch.exe, ÌÆã, ë, Éfpf  
%f^, Æ, µ, Ä·Û'¶, ³, ê, ½fL[f][fhftf@fCf<, Ì-  
¼'0, ðŽw'è, ·, é, ÆAfL[f][fhf`fFf“fWff, Íf\_fCfAf{fbfNfX, ð  
o, ³, , ÉfL[f][fh, Ì“Ç, Ýž, Ý, ¾, ¯s, Á, Ä'!Ä, ÉI⁻¹, µ, Û, ·B, ±  
, ê, ðŽg, Á, ÄA-á, |, ÌGŠÛf}fNf, ©, çfL[f][fh, ð', «Š·, |, é, ±  
, Æ, ªŠÉ'P, É, Å, «, Û, ·B

f}fNf, Ì-áF  
run hidemarudir + "\\kwch.exe asm.kwd";



ftf@fCf<[]\[-

KWCH22

LZH

16,061

96-12-12

17:53



LHa extractor "Lhasa" ver0.09



%.Efcf[]fw



Žû~^ffBf@fnfgfš DISC1:\OLS\WIN95\LHASA009



□ižò , ½, -, i, ñ ž□  
<http://www.st.rim.or.jp/~otake/>



“à-e

Lhasa , í□u, ç, ³□v, Æ“Ç, ñ, Å, , ¾, ³, ç□B  
Lhasa , í LHa , Æ Zip , ÌfA□[fJfCfufutf@fCf<, ð%ð“€ , · , éf\  
ftfg, Å, ·□B

<N“®,μ,Äftf@fCf<f}fl[]fWff,©,çfhf[]fbfv,·,é,¾,¯,ìŠÈ’P’€[]ì,Å  
%ð“€[]o-^,Ü,·[]B  
Win95,È,çfffXfNfgfbfv,ÉfVf#[]fJfJfbfg,ð[]ì,Á,Ä,»,±  
,Éfhf[]fbfv,·,é  
,¾,¯,Å,·[]B



ftf@fCf<[]\[]-

LHASA009 EXE  
ŽÀ[]sftf@fCf<

176,128

96-09-18

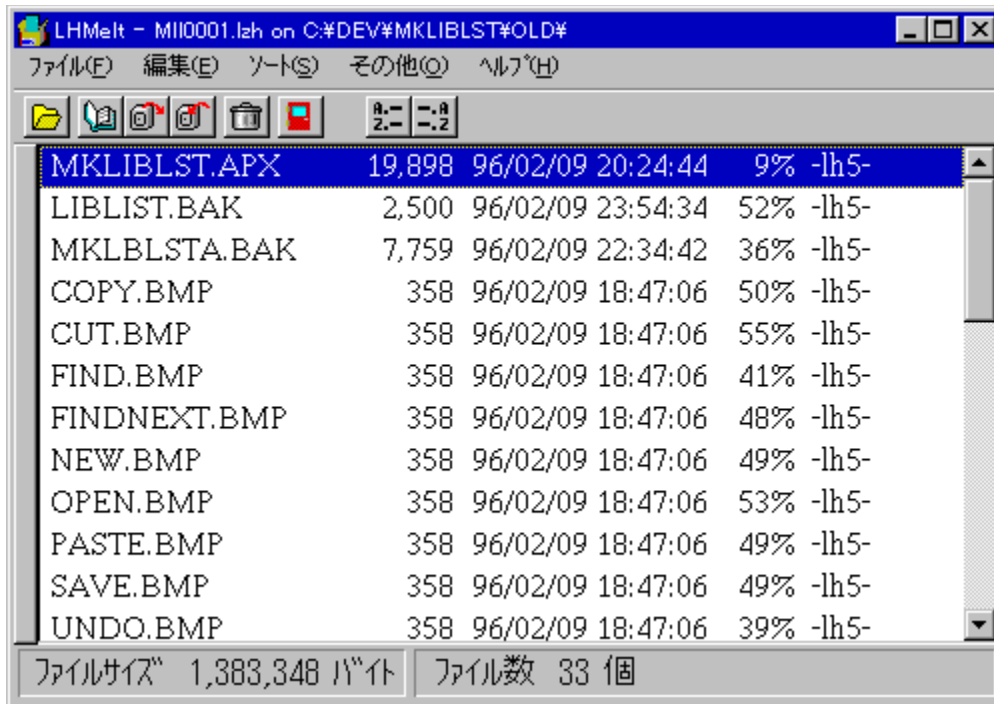
1:42



LHMELT Ver0.64



☎-ÉfCf☐☐lfW



Žû~^fffbf@fnfgfš DISC1:\OLS\WIN95\LMELT064



☐ižò Micco ž☐



“à-e

☐@LHMELT.EXE ,í LZH ,È,Ç,Ì☐‘@É,ÉŠi”[,<sup>3</sup>,ê,Ä,ç  
,éftf@fCf<,đ^<sup>3</sup>☐k☐E%đ“€,. ,é,½,ß,İfvf☐fOf%f€,Å, .☐B-¼‘0, <sup>a</sup>^á,ç  
,Ü, ., <sup>a</sup>☐C☐Ù☐ì,İ CHKUNARJ.EXE ,İ,R,Qfrfbfg”Å,Å, .☐B



ftf@fCf<\[]~

LMELT064 EXE

210,905

97-01-08

22:49





ftf@fCf<[]\[]-

MARU0213 LZH

218,047

96-09-20

14:53





Susie32 plug-in library Ver0.05



Žû~^fffbfĉfnfgfš DISC1:\OLS\WIN95\SPI32005



□ižò ,½, ^, ě, ñ Ž□  
<http://www.st.rim.or.jp/~otake/>



“à-e

Win32-p, Ì%æ'æfrf...□[f□Susie ver0.20^È□~ , ÅŽg, ¢plug-in, Å, ·□B  
Susie-{ 'Ì, Æ“ ^, ¶fffbfĉfnfgfš, É'u, ĉ, Ä%º, ³, ĉ□B

, Ü, ½□A, , È, ½, Ìfvf□f0f%ƒ€, ©, ç, ±, ê, ç, ÌPlug-in, ðĈÄ, Ñ□o, µ, Ä  
ŽèĚy, É%æ'æ, ð“Ç, Ý□ž, ÞŽ-, ¢□o-^ , Ü, ·□B



ftf@fCf<□\□~

SPI32005 LZH

199,557

96-07-16

7:43



%æ'æfrf...[]f[] Susie for Win32 Ver0.36



%æ-ÊfCf[][]fW



Žû~^ffjBf@fNfgfŠ DISC1:\OLS\WIN95\SUSIE336



[]ižò ,½, -, ÿ, ñ Ž[]  
<http://www.st.rim.or.jp/~otake/>



“à-e

Susie, ì32bit”Å, Å, ·□B  
 NT, 95 , Ü, ½, Í Win32s, ÌŠÂ<«, ÅŽg, !, Ü, ·□B  
 ‘Í%ž, µ, Å, ϕ, éftfH□[f}fbfg, Í^È%º, Í’È, è, Å, ·□B  
 Susie.exe“à’ f□□[f\_  
 Windows Bitmap (.bmp)  
 ftf<fJf%□[, ×, ½ ((.q0|.rgb)&(.fal|.ipr))  
 Š0•”Plug-in □; •Ê“r SPLUG002.LZH “™, ðf\_fEf“f□□[fh, µ, Å, -  
 , ¾, ³, ϕ□B  
 Pi 16,256□F (.Pi)  
 MAG 16,256□F (.mag)  
 XLD4 16□F (.q4)  
 Pic 8,15,16bit (.pic)  
 Pic2 8,15,24bit ŽZ□p^³□k/fnftf}f“^³□k/, ×, ½ (.p2)  
 JPEG(JFIF) YVU/GrayScale fnftf}f“^³□k  
 GIF (.gif)  
 TIFF (.tif)  
 HG (.hg) (□ì□¬:, µ, ϕ, È, ³, ñ)  
 MAKI (.mki) (□ì□¬:, µ, ϕ, È, ³, ñ)  
 LHa lh0-lh6 (.lzh)  
 Zip



ftf@fCf<□\□¬

SUSIE336 LZH

266,773

96-11-19

3:24



UNARJ32.DLL Ver 0.07



Žû~^fffbf@fnfgfš DISC1:\OLS\WIN95\UARJ3007



□ižò Micco Ž□



“à-e

UNARJ.DLL ,ì Win32 "Å□CUNARJ32.DLL ,Å, .□B



ftf@fCf<□\□~

UARJ3007 EXE

92,458

96-11-06

21:37

ŽÀ□sftf@fCf<



UNLHA32.DLL Ver0.71



Žû~^fffbfçfNfgfš DISC1:\OLS\WIN95\ULHA3071



□ìžò Micco ž□



“à-e

UNLHA32.DLL , í□CLzhç`ž®, ì^³□k□E%ð“€ , ð%Â”\ , É , . , é DLL , Å , . □B

□@UNLHA32.DLL , í□CLHA.EXE , ð Windows 3.1 -p, É^ú□A, μ, ½ UNLHA.DLL , ð□C, ³, ç, É Windows NT “™, R, QfrfbfgšÂ<<, Åžg-p%Â”\ , È, æ, x, É□Ä^ú□A, ð□s, Á, ½, à, Ì, Å, . □B-¼‘0, É”½, μ, Å Ver 0.19 , ©, ç, Í^³□k, É, à‘Í%ž, μ, Ä, ç, Ü, . □BWin “Åž©çÉ%ð“€□‘çÉ, É, Å, ç, Ä, í UNLHA.DLL “-l , □, g, ³, ñ, Ì□uftf@fCf<f}fl□[fwffšg’f□fj... □[□v, Å□ì□-, ³, ê, é, à, Ì, Æ“-“™, Ì, à, Ì, º□ì□-%Â”\ , Æ, È, Å, Å, ç , Ü, . □iWindows <y, Ñ NT “Å□j□B

□@, È, “□CVer 0.25 , ©, ç, Í NT <y, Ñ Win95 , Ì, Ý, Å“®□ì, μ, Ü, . □B Win32s “Å, É, Å, ç, Ä, Í□C□··º, ð“Y•t, . , éç`‘Ô, Æ, μ, Ü, . □B”½‘Í, É Win32s “Å, Í□§çÀ•t, <<, Å, Í, , è, Ü, . , º□CNT , â Win95 , Å, à“®□ì, μ, Ü, . □B(^;)

□@UNLHA32.DLL , ÍšJ”’t, Ìfo□[fwf#f“ , Å , , è□CAPI “™, É, Å, ç , Ä, Í□;çã•İ□X, ³, ê, é, ± , Æ, º□l, |, ç, ê, Ü, . □Bç»□Ý, Ì, à, Ì, º□Å□Iç^‘è”Å, Å, Í, È, ç, Æ, ç, x, ± , Æ, ð□\•º, ²-□%ð, Ì□ã, ²žg-p, , ¾, ³, ç□B, Ü, ½□CLHA for NT , Ìžd-l, É”º, ç□C UNLHA32.DLL , É, “, ç , Ä, à□‘çÉ<y, Ñfwfbf\_ç`ž®□CfRf}f“fh, âfXfCfbf`“™, Ìžd-l, º□;çã•İ□X, ³, ê, é, ±, Æ, à□l, |, ç, ê, Ü, . □B



ftf@fCf<□\□~

ULHA3071 EXE

162,159

97-01-08

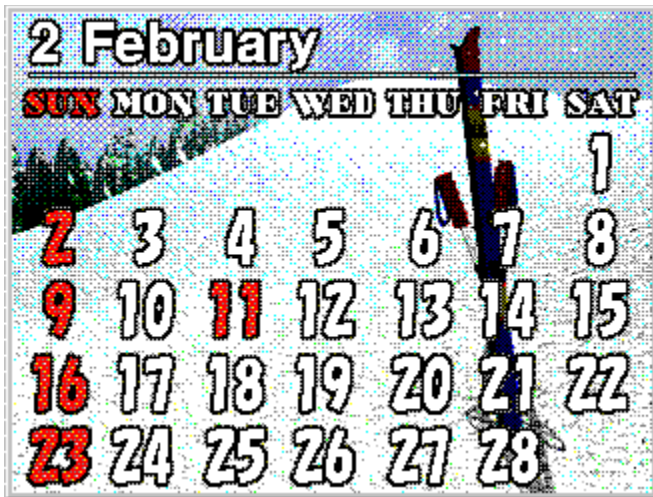
22:52



POWER REPORT "Á»»fJfEf"f\_[] '97 2EŽ



%æ-ÊfCf[][]fW



Žû~^ffBfEfNfgfŠ DISC1:\OLS\WIN95\CAL02\_32



[]žò "i" c []L"ñ With Grandmaster



"à-e

DOS/V POWER REPORT "Á»»fIfŠfwfif<fJfEf"f\_[][,Á,·[]B  
[]iEŽ,Í"~,ç,μ,[]AfXfL[][,^f,f`[][]ft,Æ,É,Á,Ä,Ü,·[]B  
fffXfNfgfbfv,İ•Đ<÷,É,Á,à,Ç,¤,¼[]B

,±,İfJfEf"f\_[][,ðfCf"fXfg[][]f<,·,é,±  
,Æ,É,æ,Ä,ÄVisualBasic,Ä[]ì[]-,³,ê,½fIf"f%fCf"f\ftfg,É•K-  
v,ÈDLL,^'g,Ý[]ž,Ü,ê,Ü,·[]B



ftf@fCf<[]\[]-

CAL02\_32 EXE

283,648

96-12-21

17:47

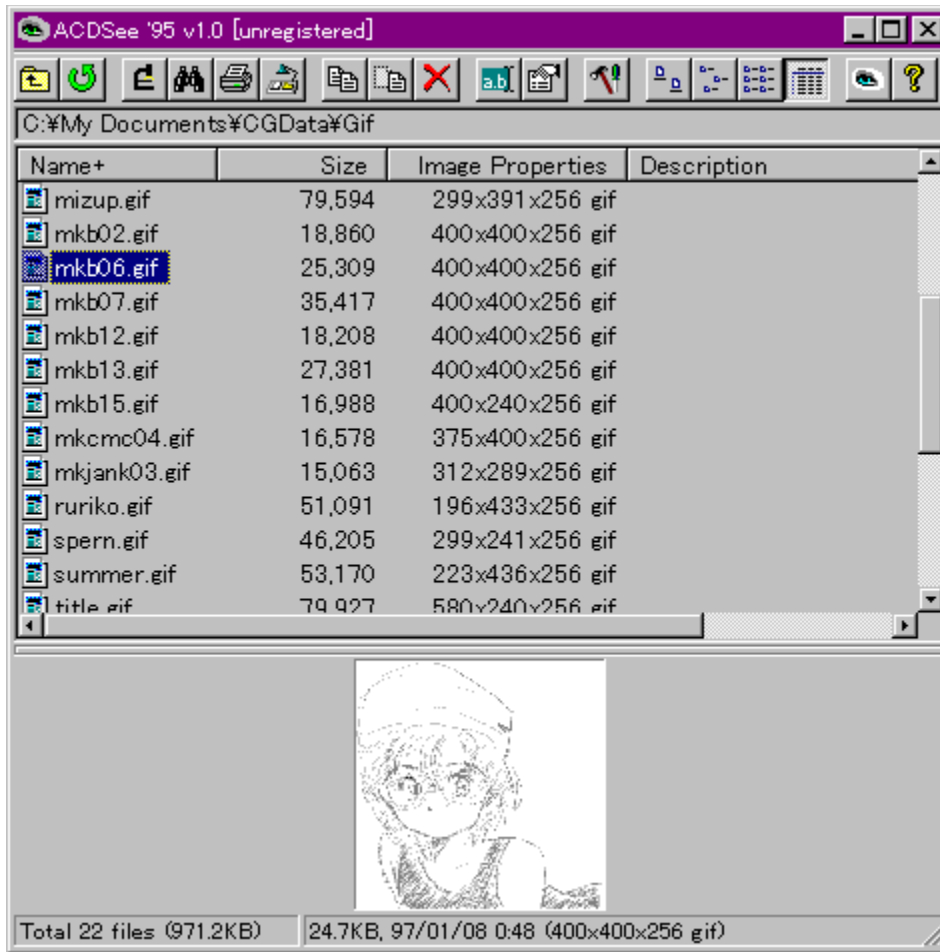




ACDSee '95 V1.0



æ-ÊfCf[]fw



Žû~^ffBf@fNfgfš DISC1:\OLS\WIN95\ACDC3210



□ižò David S Hooper Ž□  
<http://acdsystems.com/>



"à-e

Windows95/NT' î%ž, ì Aftf@fCf% [Š' Šo, ÅŽg, |, é-f-Í, ìf0f  
%ftfBfbfNfrf... [fA, Å, · B



ftf@fCf< \ \ -

ACDC3210 EXE

488,244

96-12-18

0:09



ffXfNfgfbftKfAfCfRf“ffjf... for Win95 v1.02



æÊfCf fW



Žû~^ffBfCfNfgfŠ DISC1:\OLS\WIN95\DSIC0102



ìžò '²ø±½ ž



“à-e

ffXfNfgfbfvã, ÌfAfCfRf“, ðffjf... [•\Ž!, µ, Û, •B



ftf@fCf< \~

DSIC0102 LZH

506,849

96-12-08

18:32



FreeCell Try Recorder Ver 2.20



%æ-ÊfCf[]fW



Žû~^ffBfçfNfgfŠ DISC1:\OLS\WIN95\FCMAN220



[]ižò Teamwind Ž[]



“à-e

-{f\ftfg,Í[]AWindows[]ã,Å“@[]ì,·,éfJ[][fhfQ[][f€[]uFreeCell[]v  
 -p,Ïfc[][f<f\ftfg,Å,·[]B  
 []uFreeCell[]v,Í[]A1"Ô,©,ç32000"Ô,Û,Å,ÏfJ[][fh"z-ñ,ªÆ^,Û,Á,Ä,ç  
 ,Û,·,Ï,Å32000'Ê,è-V,x,Û,·,ªfNfŠfA,µ,½"Ô[]t,ð<L~^,·,é<@"\,ª-  
 ³,ç,Ï,Å[]u^ê"xfnfŠfA,µ,½"Ô[]t,Í,à,ª,â,è,½,-  
 ,È,ç[]v,Æ,©[]u32000'Ê,è'S"fnfŠfA,µ,½,ç[]v,Æ,[]l,!,É,È,Á,Ä,ç  
 ,é<M•û,Ï'ã,è,É-{f\ftfg,ªfTf|[][fg,ç,½,µ,Û,·[]B  
 Žg,ç•û,Í[]A,Æ,Ä,àSË'P,Å[]uFreeCell[]v,Å-V,Ô,Æ,«,É-{f\  
 ftfg,ð<N"@,µ,Ä,°, -  
 ,¾,°,·[]BfnfŠfA,µ,½"Ô[]t,Íž"@"@,Å<L~^,³,é,Û,·[]B,Û,½[]AfnfŠfA,  
 µ,½,±,Æ,Ï-³,ç"Ô[]t,ð[]uFreeCell[]v,Ï"Ô[]t"ü-ÍfgfŠfA,Öž"@"[]'-  
 ,·,é<@"\,à,·,è,Û,·[]B  
 ,P,0-¼,Û,Å,Ïft[][fU[][,ðŠç-[],Å,«,Û,·[]B  
 -{f\ftfg,Å[]uFreeCell[]v,ð"0'ê"I,É-V,Ñ,Û,µ,å,ª[]B



ftf@fCf<[]\[]-

FCMAN220 LZH

58,668

96-12-10

20:16



LHAft[] [fefBfŠfefB,R,Q[]@Ver1.00



%æ-ÊfCf[] [fw



Žû~^fffbf@fNfgfŠ DISC1:\OLS\WIN95\LHUT3200



[]iž0 'â'|~a'¥ ž[]



“à-e

"LHUT32.EXE Ver1.00" , íWINDOWS95-p, ÌLHAft[] [fefBfŠfefB, Å, ·[]B  
 fEfBf“fhfEfY,X,T, ÌŠÂ<«, Å[]ALHA, ZIPftf@fCf<, Ì^³[]k[]E  
 %ð“€[]A[]‘@É“àftf@fCf<, Ì[]í[]æ[]E%{—[]E^ó[]ü[]EžÀ[]s, ^, Å, <<, Ü, ·[]B



ftf@fCf<[]\[]-

LHUT3200 EXE

375,117

96-12-05

16:07





LMZIP32.DLL WinFM32 & WinLM32 ZIP 'ĀÉ^³k/%đ“€DLL

Ver 1.10



Žû~^ffjBfĀfNfgfŠ DISC1:\OLS\WIN95\LZIP3110



□ižò -ö□@'¼ž÷ ž□



“à-e

□@WinFM32 □• WinLM32 ,Å□u,y,h,o□'ĀÉ□v,đ^μ,π,½,β,İŠg'£  
,c,k,k,Å,·□B  
-{fo□[fWf#f“,æ,è□A,y,h,o□'ĀÉ,İ%đ“€,%¼,-,Å,È,^³□k,àfTf|  
□[fg,μ,Ä,ç,Ü,·□B

~~~~

~~~~



ftf@fCf<□\□~

LZIP3110 LZH

120,048

96-12-09

16:41



PowerToys, ð“ú- {Œê%» , · , é (□æTweak UI)



Žû~^ffjBfŒfNfgfŠ DISC1:\OLS\WIN95\POWERJ2



□ìžò Kome Ž□



“à-e

Microsoft, Ìftfš□ [f\ftfg, Å, , éPowerToys, Í□ATweak  
UI, CabView, SendToX, È, Ç, É, Â, ç  
, Ä, Í, P, Á, ¿, á, ñŽ□, È, Ç, Ìžè, É, æ, Á, Ä“ú- {Œê  
%» , Ì, ½, ß, Ì□••<sup>a</sup>ftf@fCf< , <sup>a</sup>□ì□¬, <sup>3</sup>, ê, Ä, ç  
, Ü, · , <sup>a</sup>□A, » , Ì ‘¼, Ì, à, Ì, É, Â, ç, Ä, Í ‘¶□Ý, μ, Ü, <sup>1</sup>, ñ□B, » , ±  
, Å, » , Ì ‘¼, Ì, à, Ì, É, Â, ç, Ä, à“ú- {Œê  
%» , Ì, ½, ß, Ì□••<sup>a</sup>ftf@fCf< , ð□ì□¬, μ, Ü, μ, ½□B



ftf@fCf< □\□¬

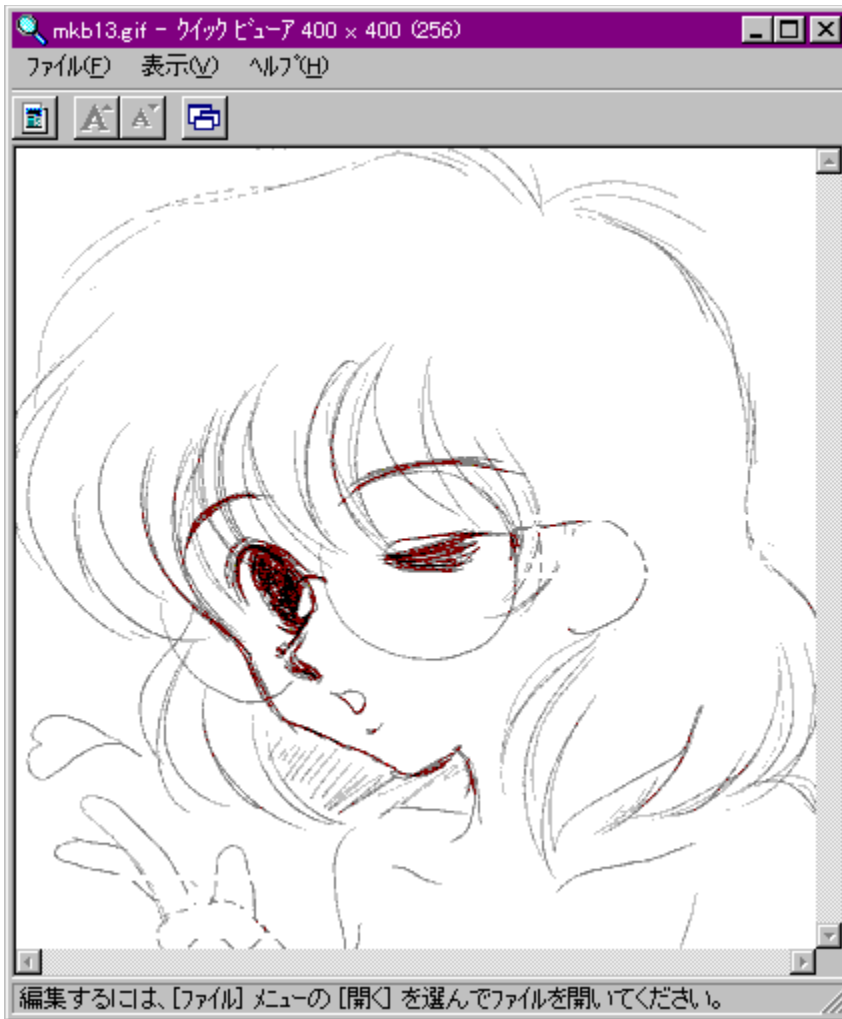
POWERJ2 LZH 39,454 96-12-19 8:24



Windows95, 2~, ĘP°±-p%æ'æŪ°ÀP°DLL□W Version 1.3



%æ-ÊfCf□□lfW



Žû~^fffbf@fnfgfŠ

DISC1:\OLS\WIN95\QVDLL13



□ìžò K.Shimizu Ž□



“à-e

QVDLL, Í□CWindows95, Å%æ'æftf@fCf<, ðšÈ'P, É•\  
 Ž!, <sup>3</sup>, <sup>1</sup>, é, <sup>1</sup>/<sub>2</sub>, ß, Ìf\ftfg, Å, •□D  
 QVDLL, ðfCf“fXfg□[f<, •, ê, Î□CWindows95, Ìf}fCfRf“fsf...  
 □[f^, âfGfNfXfvf□□[f%, ÌfEfBf“fhfE, Ì't, Å  
 %æ'æftf@fCf<, ð'I, ñ, ÅŠÈ'P, É•\Ž!, Å, «, é, æ, x, É, È, è, Ü, •□D  
 %æ'æftf@fCf<□ã, Åf}fEfX, Ì%Ef{f^f“, ðfNfŠfbfN, µ□Cf□fjf...  
 □[, ©, çfNfCfbfNfrf...□[fA, ð'I, Ô, Å%æ'æftf@fCf<, Ì•\  
 Ž!, <sup>a</sup>, Å, «, Ü, •□DQVDLL, Ì^É%º, Ì, P, VŽí-p, ÌftfH□[f}fbfg, É'î  
 %ž, µ, Ä, ç, Ü, •□D

BMP, GIF, JPEG, MAG, MAKI, PCX, PI, PIC, PICT, Q0, Q4, RAS, RGB, RLE, TGA, TIFF, XBM

LZHftf@fCf<“à, Ì%æ'æftf@fCf<, à'Ê□í, Ì%æ'æftf@fCf<, Å“^-  
 l, ÉfNfCfbfNfrf...□[fA, ÅŠÈ'P, É•\  
 Ž!, Å, «, Ü, •□iQVDLL, Ì'<sup>1</sup>/<sub>4</sub>, ÉUNLHA32.DLL, <sup>a</sup>•K-v, Å, •□j□D

□ê-pfCf“fXfg□[f  
 %•t, «, È, Ì, ÅfCf“fXfg□[f<, àšÈ'P, Å, •□DWindows95, ÌfRf“fgf□□[f<f  
 pflf<, ©, ç, ÌfAf“fCf“fXfg□[f<<@“\, É, à'î%ž, µ, Ä, ç, Ü, •□D



ftf@fCf<□\□-

QVDLL13 LZH 135,191 97-01-07 22:02



WinLM32 ^ 3 k i s 2 U E O Y A A Y 1/2 E I B U , p x N i Win32 ' I % z " A j Ver

1.21



%æ-E f C f [ f w



Z u ~ ^ f f f B f e f N f g f S DISC1:\OLS\WIN95\WLM32121



i z o - o @ ' 1/4 z ÷ z



" a - e

@LHA , , æ, N ZIP  
 , É, Ä ^ 3 k , 3 , ê , 1/2 ' æ É f t f e f C f < , i f f " f e f i f " f X f c [ f < , Å , . B  
 @WinLM, I32 f r f b f g ' I % z " Å , Å , . B



ftf@fCf<[]\[]-

WLM32121 EXE

357,089

96-12-24

18:23



