

# Graphic Viewer for Windows (GV)



TIFF, Q0対応版

**Graphic Viewer**



Version 0.63

<N"®•û-@

fRf}f"fh

%ooæ'œĒ`Ž®

,æ,, ,é,p□•,`

ŠÖ~A—pĒê

,c,c,dŽd—l



## f,u,É,Â,ç,Ä

Æ,Ñ,½Ž□□,ìMS-Windows'í%ž%æ'œfrf...□f□□[,Å,·□BMS-Windows'í  
%ž,Å,·,©,ç'â%æ-Ê□E'½□F•\Ž!,í"-R,Å,·,ª□A□"à,ì—L-¼,È  
%æ'œCE`Ž®□i,l,`fCE`Ž®□A,l,`j,hCE`Ž®□A,p,SE`Ž®□A,o,h,bCE`Ž®□A,p,O  
CE`Ž®,È,Ç□j,É'í%ž,μ,Ä,ç,é,ì,í,f,u,¾,¯,Å,μ,â,æ□B

f,u,ì"Á'¥

Žg—p□ă,ì'□^Ó"

—š—ö,T

## ,f,u,ì“Á’¥

MS-Windows 3.0/3.1'î%ž,ì%æ'œ•\Ž!fvf[]Of%of€

'½,,ì%æ'œ€`Ž®,É'î%ž

16[]Fff[]f^,Ípf[]Efbfg,đŽg,Á,Ä•\Ž![]i,f,u,¾,¯,ì“Á’¥,Á,·[]B[]j

[]i'[][]F16[]FŠÂ<«,Á,íMS-Windows,ÍEÁ'èfp[]Efbfg,Á,·[]B[]j

%æ'œff[]f^,ÌRf[]f“fg[]EfhfLf...f[]f“fgftf@fCf<,đ•\Ž!%Á“\

,È,Ç,ª[]A“Á’¥,Á,·[]B, ,Æ[]A^È%º,ì,æ,æ,È,“,Ü,¯<@“\,ª, ,è,Ü,·[]B

,P[]DfNfŠfbfvf{[]fh,Æ,ÌRfs[][]^fy[]fXfg[]i,c,h,a[]j

,Q[]D,a,l,o€`Ž®,Á,Ìff[]f^,ÌZ[]fu

,R[]D•i[]“%æ'œ,Ìfhf%fbfO[]•fhf[]fbfv,É,æ,éŽ©“®[]^Žè“®~A'±•\Ž!

,S[]D%æ'œff[]f^,ì%E[]^[]%ñ“]•\Ž!

,T[]D•i[]“%æ'œff[]f^,ìŽ©“®[]^Žè“®~A€<•\Ž!

,U[]DfEfBf“fhfEfTfCfYŽ©“®•İ[]X<@“\

,V[]DfRf[]f“fg•\Ž!

,W[]DfhfLf...f[]f“fgftf@fCf<•\Ž!

,X[]DfffBfXfvf[]fC<@“\•\Ž!

## <N“®•û-@

"C^Ó,ìffBfĈfNfgfŠ[] ,ÉGV.EXE[]AGV.HLP,ð%ð“€ ,μ[]Afvf[]fOf  
%of€f}f[]fWff[] ,É“o~^ĈĚã[]AŽÀ[]s,μ,Ä  
%oº,³,ç[]BŠÖ~A•t,¯,ð[]s,!,îftf@fCf<f}f[]fWff[] ,È,Ç,©,ç  
%oæ’œftf@fCf<,ðf\_fuf<fNfŠfbfN,·,é,±  
,Æ,Å<N“® ,Å,«,Ü,·[]B,Ü,½[]Aftf@fCf<f}f[]fWff[] ,©,ç%oæ’œftf@fCf<,ðfhf  
%ofbfO[]•fhf[]fbfv,·,é,±,Æ,É,æ,è<N“® ,·,é,±,Æ,à%oÂ“\,Å,·[]B

,f,u,ì,ç,ë,ç  
,ë,È[]Ý’è,í<N“®ĈĚã,É•Ī[]X“o~^,Å,«,Ü,·,ª[]A<N“®flfvfVf±f“,ð,Â,¯,é,Æ[]A[]Ý’è,ð, ,  
ç,©,¶,ßĈ^,ß,Ä,©,ç<N“® ,Å,«,Ü,·[]B

## <N“®f|fvfVf#f“

GV [<@ŽíŽw'è>] [/FP[+|-]] [/PG=<Pager>] [/EXT=<TYPE>]  
[/ZM=<ZoomRate>] [/AS=<AspectRatio>] [/AA[+|-]]  
[/WD=<DataDir>]  
[/ICON[+|-]] [/UC[+|-]] [/QT{-|= {0|1|2}}] [/DT[+|-]] [/VI[+|-]]  
[/C={16|256}] [/ESC[+|-]] [/APT={W|H|I|D}] [/BMP[+|-]] [/AL[+|-]]  
[/OD[+|-]] [/PS={1|2|3}] [/DDE]  
[<DataFile>]

<@ŽíŽw'è>	<u>&lt;@ŽíŽw'èf fvfVf#f“</u>
/FP[+ -]	<u>Ā'èfpfĀfbfgf fvfVf#f“</u>
/PG=<Pager>	<u>fŷ[]fWff[]Žw'èf fvfVf#f“</u>
/EXT=<TYPE>	<u>f^fCfv[]Ÿ'èf fvfVf#f“</u>
/ZM=<ZoomRate>	<u>fY[]f€—;Žw'èf fvfVf#f“</u>
/AS=<AspectRatio>	<u>fAfXfyfNfg”äŽw'èf fvfVf#f“</u>
/AA[+ -]	<u>Ž©“®fAfXfyfNfg”ä'²[]®f fvfVf#f“</u>
/WD=<DataDir>	<u>fffBfĀfNfgfŠŽw'èf fvfVf#f“</u>
/ICON[+ -]	<u>fAfCfRf“%»Žw'èf fvfVf#f“</u>
/UC[+ -]	<u>”ňfAfNfefBfuŽŽ[]Ä•`%æf fvfVf#f“</u>
/QT{- = {0 1 2}}	<u>Ā.[]f fvfVf#f“</u>
/DT[+ -]	<u>fffBfUf fvfVf#f“</u>
/VI[+ -]	<u>fZ[]fu•\Ž;fCf[][]fWf fvfVf#f“</u>
/C={16 256}	<u>Ā.[]F[]”f fvfVf#f“</u>
/ESC[+ -]	<u>ESCfL[][%Ÿ%°ŽŽ[]—¹f fvfVf#f“</u>
/APT={W H I D}	<u>fAfXfyfNfg”ä'²[]®f.[]f[]fh[]Ÿ'èf fvfVf#f“</u>
/BMP[+ -]	<u>frfbfgf}fbfv—~—pf fvfVf#f“</u>
/AL[+ -]	<u>Ž©“®~ĀĀ&lt;•\Ž;f fvfVf#f“</u>
/OD[+ -]	<u>fhfLf...f[]f“fg•\Ž;f fvfVf#f“</u>
/PS={1 2 3}	<u>PhotoCDftfH[]f}fbfg•\Ž;fTfCfyf fvfVf#f“</u>
/DDE	<u>.c.c.df fvfVf#f“</u>

## <@ŽíŽw'èlfvfVf#f">

<<@ŽíŽw'è>F{ /98 | /98N | /98E | /98E1 | /98EA | /GA | /VGA }  
/98,/98N PC9801(16F)+NEC  
WIN3.0/3.0A/3.1,EPSON WIN3.1  
/98E,/98E1 PC9801(16F)+EPSON  
WIN3.1(/98N,ÅF,ª,¨,©,µ,¢ê#)  
/98EA PC9801+EPSON WIN3.0A  
/GA PC9801+GA1024i/  
W(Ā'èfpfĀfbfg"Å)  
/VGA VGA  
Default Ā<L^ÈŠO,ìfpfĀfbfgf}fì[fWff[Ā'  
%oŽ<@Ží

## Ā'èfpfĀfbfglfvfVf#f">

/FP[+|-]  
,f,u,ìÝ'è,µ,½,o,b,X,W,ìfpfĀfbfg,ð'¼,ìAfvfŠfP[fVf#f",ªfAfNfefBfu,É,È,Á,Ä,  
à∅,è'Ö,ì,È,,È,è,Ü,·B

## fy [fWff [Žw'èlfvfVf:f“

/PG=<Pager>

%æ'æftf@fCf<,lfhfLf...

f“fgftf@fCf<,đ“Ç,p,½,ß,lfy [fWff [đŽw'è,μ,Ü,·BfpfX,³Ê,Á,Ä,ç  
,È,¯,ê,îftf<fpfX,Å,Å<Lq,μ,Ä%º,³,çBffftfHf<fg,Ínotepad.exe,Å,·B

## f^fcfvY'èfifvfVfjf"

/EXT=<TYPE>

□F{ MAG | MKI | Q4 | JPG | GIF | PIC | PI | TIFF | PCD | Q0 | XBM | X |  
BMP | ALL }

MAG ,Ü,«,¿,á,ñNET,ÌMAKI02Ì«°İ-Ä(,l,`,fCE`Ž®)  
MKI(MAKI ,Ü,«,¿,á,ñNET,ÌMAKI01A□AMAKI01BÌ«°İ-Ä(,l,`,j,hCE`Ž®)  
)  
Q4 QLDÌ«°xÑ,ÅŠJ",³,ê,½Ì«°İ-Ä(,p,SCE`Ž®)  
JPG(JPEG) JFIFÌ§²ÙÌ«°İ-Ä,ÌJPEGLÌ«°İ-Ä(,i,o,d,fCE`Ž®)  
GIF CompuServe,ÅŠJ",³,ê,½Ì«°İ-Ä(,f,h,eCE`Ž®)  
PIC -ö'ò,³,ñ,ÌŠJ",³,ê,½,w,U,W,j—p,ÌÌ«°İ-Ä□i,o,h,bCE`Ž®□j  
PI -ö'ò,³,ñ,ÌŠJ",³,ê,½16/256□F—p,ÌÌ«°İ-Ä□i,o,%oCE`Ž®□j  
TIFF TIFF(Tagged Image File Format) □i,s,h,e,eCE`Ž®□j  
PCD KodaKŽĐ,ªŠJ",µ,½Photo-CDÌ«°İ-Ä□i,o,b,cCE`Ž®□j  
Q0 QLDÌ«°xÑ,ÅŽg,í,ê,Ä,ç,éRGBÍpÀ,ÌÌ«°İ-Ä□i,p,OCE`Ž®□j  
XBM X Window,ÌËp-Äİ-ÌßÌ«°İ-Ä(,w,a,lCE`Ž®)  
X JUNET,Å,ÌXBM,ð%ü—Ç,µ,½Ì«°İ-Ä(,wCE`Ž®)  
BMP MS-Windows,Å,ÌËp-Äİ-ÌßÌ«°İ-Ä(,a,l,oCE`Ž®)  
  
ALL □ã<L,ÌftfH□[f}fbfg,ðŠg'£Žq,É,æ,Á,ÄŽ©“®”»•Ê,·,éf,□[fh

## fY□[f€—;Žw'èfifvfVfjf"

/ZM=<ZoomRate>

%oæ'œff□[f^,ì•Ž;Žž,ÌfY□[f€—;ðŽw'è,µ,Ü,·□B□i,P,O□"□` ,X,X,X□"□j



## fAfXfyfNfg"äŽw'èlfvfVf†f“

/AS=<AspectRatio>

%œ'œff[f^,ì•\Ž|Žž,lfAfXfyfNfg"ä,đŽw'è,μ,Û,·B[i,T,O`,`Q,T,Oj

## Ž © “ ® fAfXfyfNfg” ä’² □ ® flfvfVf‡f“

,o,h,bCE`Ž®ff□[f^•\Ž|Žž□Aff□[f^f^fCfv,đ,Ý,é,±  
,Æ,É,æ,èfAfXfyfNfg”ä,đŽ©“®’²□®,μ,Ä•\Ž|,μ,Ü,·□B

## fffBfCEfNfgfŠŽw'èlfvfVf†f“

/WD=<DataDir>

<N“®Žž,ì%œ'œff□[f^,ìfffBfCEfNfgfŠ,đŽw'è,μ,Û,:□B

## fAfCfRf“%o»Žw'èlfvfVf‡f“

/ICON[+|-]

<N“®Žž,ÉfAfCfRf“%o»,μ,Ä<N“®,;é,Æ,«Žw'è,μ,Ü,·□B,à,¿,ë,ñ'¼,ĭfAfvfŠfP□[f  
Vf‡f“,Æ“˘,ŕ,æ,α,É SHIFT +  
f\_fuf<fNfŠfbfN,Å<N“®,μ,½,Æ,«,àfAfCfRf“%o»,³,ê,Ü,·□B

## ”ňfAfNfefBfuŽžÄ•`%œfIfvfVf#f“

/UC[+|-]

,f,u,řfAfNfefBfu,Å,È,,È,Á,Ä,ç,é,Æ,«,à□A,Å,«,éĀÀ,è'%ŽÀ,È□F,Å•\  
Ž!,μ,Ü,·□B'¼,İfAvfŠfP□[fVf#f“ ,É,æ,Á,Ä□AfpfĀfbfg,ª•İ□X,³,ê,½,Æ,«,É%œ-  
Ê,İ□F,đ'²□®,·,é,ì,Å□A•\Ž!,ª'x,,È,è,Ü,·□B

## CE, □FfifvfVf#f“

/QT{-|= {0|1|2}}

%æ'æff□[f^•\Ž|Žž,ìCE, □FfifvfVf#f“,đŽw'è,μ,Û,·□B-Žw'è,ì,Æ,«,íCE, □F-  
³,μ□A0,ì,Æ,«,ífffBfXfvfCEfC,ì•\Ž!□F□“,ª32K^È□ã,ì,Æ,«,íCE, □F-³,μ,Å□A,»,ê^È  
%º,ì□F□“,ì,Æ,«,ífffBfXfvfCEfCfhf%ofCfo,ì“\—í,É, ,í,¹,ÄCE, □F,·,é□A1,í1fpfX□A2,í  
2fpfX,ìCE, □F,đŽw'è,μ,Û,·□B1fpfX,ì•û,ª•\Ž!,í'½□□,‘¬,Å,·,ª□A□F,ì□ÄCE»□«,í^«,-  
,È,è,Û,·□B,Û,½□A“-‘R,ìŽ-,È,ª,ç□ACE, □F,đ,μ,È,çŽw'è,É,·,é,ÆfnfCjff%o□[□A  
ftf<fjff%o□[,ì•\Ž!%oÂ“\f}fvf“,Å,í□,‘¬,É•\Ž!,³,ê,Û,·□B

## fffBfUfIfvfVf#f“

/DT[+|-]

fffBfU,đ□s,α,©,Ç,α,©,đŽw'è,μ,Û,·□B

## fZ[fu•\Ž!fCf[fWf!fvfVf#f“

/VI[+|-]

ff[f^,đfZ[fu,·,é,Æ,«Æ»Ý,ì•\Ž!ó'ÔifY[f€AfXfyfNfg”äj,ì,Ü,Üs,æ  
,©,Ç,æ,©,đÝ'è,µ,Ü,·B



## CE, F "fifvfVf#f"

/C = {16|256}

CE, F Žw'èŽž, ÉCE, F, ·, éF", Å, ·BŽw'è, μ, ½F", æ, è, à  
%œ'œff[f^, ìF", ì•û, ð, È, çê#f, íACE, F, ís, í, ê, Ü, ð, ñB

## ESCfL[][%oY%o°Žž[]I—<sup>1</sup>fifvfVf‡f“

/ESC[+|-]

ESCfL[],đ%oY,·,Æ,f,u,ª[]I—<sup>1</sup>,·,é,æ,ɣ,É,È,è,Ü,·[]B,½,¾,μ[]A  
%oæ'œ,đf[][]fh'†,É,Í[]I—<sup>1</sup>,μ,È,ç,æ,ɣ,É,μ,Ä,,¾,³,ç[]B

# fAfXfyfNfg"ä'²®f,[]fh[]Ý'èlfvfVf†f“

/APT= {W|H||D}

fAfXfyfNfg"ä,ð'²® ,·,éf,[]fh,ð^È%ºº,ì,æ,æ,É[]Ý'è,µ,Ü,·[]B  
,v[]F·\Ž!·[],ð'²®,µ,ÄfAfXfyfNfg"ä,É, ,í,¹,é  
,g[]F·\Ž![],,³,ð'²®,µ,ÄfAfXfyfNfg"ä,É, ,í,¹,é  
,h[]FfIfŠfWfif<,æ,èŠg'å,³,ê,é·û€ü,É'²®,µ,ÄfAfXfyfNfg"ä,ð, ,í,¹,é  
,c[]FfIfŠfWfif<,æ,è[]k[]¬,³,ê,é,æ,æ,É'²®,µ,ÄfAfXfyfNfg"ä,ð, ,í,¹,é

## frfbfgf}fbfv~—pfIfvfVf#f“

/BMP[+|-]

,f,u,ì“à•”,Å•`%oæ□iff□[f^•\Ž!□AfXfNf□□[f<,È,Ç□j,ì‘¬,çftfH□[f}fbfg,ì—~—p,ì  
—L-³,đ□Ý’è,μ,Ü,·□B,±,ìftfH□[f}fbfg,đ—~—p,μ,È,ç,æ,α,É,·,é,Æ□A□Á”if□f,fŠ—  
Ê,đ—},!,é,±,Æ,º□o—^,Ü,·□B

## Ž © “ ® ~ ACE < • \ Ž ! f l f v f v f f f “

/AL[+|-]

ftf@fCf<,đ“Ç,Ý□ž,P,Æ,«□Aftf@fCf<-  
¼,ì□ĀCEã,ì,P•ŕŽš,Ü,½,Í,Q•ŕŽš,đCE©,Ä□A^È%º,ì<K'¥,É, ,xřff□[f^ftf@fCf<,ª“~  
ŕřffBfCEfNfgfŠ,É'ŕ□Ý,·,é,Æ,«□AŽ © “ ® “I,É,·,x,Ä,ìftf@fCf<,đ“Ç,Ý□ž,ň,Ā~ACE<,μ,  
Ä•\Ž!,·,é<@“\,đ□Ý'è,μ,Ü,·□B

ftf@fCf<-¼,ì<K'¥□@

□ã%º            xxxxU.ext + xxxxD.ext ,Ü,½,Í xxxxU.ext + xxxxS.ext  
□ã'+%º        xxxxU.ext + xxxxM.ext + xxxxD.ext ,Ü,½,ÍxxxxU.ext  
                 +□@xxxxM.ext + xxxxS.ext  
□ŕ%ºE            xxxxL.ext + xxxxR.ext  
□ŕ'+%ºE        xxxxL.ext + xxxxM.ext + xxxxR.ext  
,Q,~ ,Q        xxxxUL.ext + xxxxUR.ext + xxxxDL.ext + xxxxDR.ext  
                 ,Ü,½,Í xxxxUL.ext + xxxxUR.ext + xxxxSL.ext + xxxxSR.ext

## fhfLf...f[]f“fg•\Ž!flfvfVf#f”

/DC[+|-]

,±,lf|fvfVf#f”,³Y’è,³,ê,é,Æ[]A%œ’œ•\Ž!,Æ”~Žž,ÉfhfLf...f[]f“fgftf@fCf<,đ•\Ž!,μ,Ü,·[]B

fhfLf...f[]f“fg,đ•\Ž!,·,é•û-@,Æ,μ,Ä[]A%Ef{f^f”,lf\_fuf<fNfŠfbfN,Å,à%œÂ”\ ,Å,·[]B

## PhotoCDftfH[f]fbfg•\Ž;fTfCfYfifvfVf#f“

/PS={1|2|3}

PhotoCDftfH[f]fbfg,ìff[f^,đ•\Ž|,·,é,Æ,«,ìfTfCfY,đŽw'è,μ,Û,·B

1 : 192 x 128

2 : 384 x 256

3 : 768 x 512

,c,c,dflfvfVf:fj“

,c,c,d,đŽg—p,·,é,Æ,«,ÉŽw'è,μ,Ü,:□B



## fRf}f“fh



ftf@fCf<f f f f... [

•Ö f f W f f f f... [

•\Z f f f f... [

f l f v f V f f f f... [

f w f < f v f f f f... [

f L [ f { [ f h ' € [ , É, Â, ç, Ä

f } f E f X ' € [ , É, Â, ç, Ä

, v, % o o, Ž, , , , [ , - , " , } f C f " f ^ [ f t f F f C f X, É, Â, ç, Ä





## f}fEfX'€ì

,f,u,ìff□[f^•\Ž!‰æ-Ê,É^È‰°ì,æ,α,Èf}fEfX'€ì,ð,·,é,±  
,Æ,É,æ,Á,ÄfRf}f“fh,ðŽÀ□s□o—^,Ü,·□B

□¶f{f^f“,ð‰ÿ,μ,½,Ü,Ü'Ò,Â  
Žÿ,ìff□[f^□^'O,ìff□[f^•\Ž!“™,ìf□fjf...□[,ð•\Ž!  
‰Ef{f^f“,ð‰ÿ,μ,½,Ü,Ü'Ò,Â  
•\Ž!Šg'å—!,ìf□fjf...□[,ð•\Ž!  
□¶f{f^f“,ðf\_fuf<fNfŠfbfN  
Žÿ,ìff□[f^,ð•\Ž!  
‰Ef{f^f“,ðf\_fuf<fNfŠfbfN  
•\Ž!ìff□[f^,ìhfLf...f□f“fgftf@fCf<,ð•\Ž!

[ftf@fCf<f□fjf...□I](#)

ftf@fCf<□{“C,Ý□ž,Ý

ftf@fCf<□{□V<K•Û‘¶

ftf@fCf<□{ŠÂ<<•Û‘¶

ftf@fCf<□{□I—<sup>1</sup>

fRf}}f“fh

## ftf@fCf<{“Ç.Ýž.Ý(ftf@fCf<{ŠJ.)

f\_fCfAf□fOf{fbfNfX,ª•\Ž!,³,ê,Ü,·,ì,Å□A%œ'œĚ`Ž®(File Type)  
,đŽw'èĚã□AĚ©,½,¢%œ'œ,ì, ,éffBfĚfNfgfŠ□[,É^Ú“®□A-Ú“l,ì  
%œ'œftf@fCf<,đf\_fuf<fNfŠfbfN,·,é,©□A'l'đĚãOpen,đfNfŠfbfN,μ,Ä  
%œª,³,¢□B

- Auto Link            Ž©“®~AĚ<•\Ž!flfvfVf#f“
- Open Document    fhfLf...f□f“fg•\Ž!flfvfVf#f“

ftf@fCf<f□fjf...□l

## ftf@fCf<□{□V<K•Ů'¶(ftf@fCf<□{-¼'O,đ•t,-,Ä•Ů'¶)

•\Ž!,μ,Ä,ϕ,é

%oæ'œ,đ,a,l,oE`Ž®,Å•Ů'¶,μ,Ü,·□BOptions,đfNfŠfbfN,·,ê,î□AfZ□[fuŽž,ì□

î•ñ□Ý'è,ª,Å,«,Ü,·□B□iflvfVf#f“□{•Ů'¶ŠÂ<<□j

ftf@fCf<f□fjif...□l

[ftf@fCf<{ŠÂ<<•Û'¶](#)

%oæ'œCE`Ž® ,â<N“® flfvfVf#f“ ,ìÝ'è,ð%Šú

%o»ftf@fCf<iGV.INIj,É' ,«ž,ÝAŽŸ

%oň<N“® Žž,í•ïX,μ,½Ý'è,Å<N“® ,μ,Û,·B

ftf@fCf<f¶fj...¶



## ftf@fCf<□{□I—<sup>1</sup>(ftf@fCf<□{,f,u,ì□I—<sup>1</sup>)

,f,u,đ□I—<sup>1</sup>,μ,Û,·□B,±,ì,Æ,«□AfhfLf...f□f“fg,đ•\Ž!,μ,Ä,φ  
,½,Æ,«,í,»,)fvf□fZfX,à□I—<sup>1</sup>,<sup>3</sup>,<sup>1</sup>,Û,·□B

ftf@fCf<f□fif...□I

## •Ò□Wf□fj...□I

- Ò□W□{•jŽÊ
- Ò□W□{•\Ž!fCf□□[fW•jŽÊ
- Ò□W□{Žæ,è□ž,Ý
- Ò□W□{•\Ž!fNfŠfA
- Ò□W□{CE,□F
- Ò□W□{%oň“]
- Ò□W□{%oæ'œ~ACE<

fRf}f“fh

## •ÒW{•;ŽÊ(•ÒW{fRfs[])

•\Ž!fCf[]fW,đfNfŠfbfvf{[]fh,ÖfRfs[],μ,Ü,·B

•ÒWf[]fj...[]

•ÒW{•Ž!fCf[]fW•;ŽÊ(•ÒW{‰œ'œfRfs[])

CE»Ý•\Ž!,μ,Ä,ç,éCf[]fW,ì,Û,ÛfNfŠfbvf{[]fh,ÖfRfs[],μ,Û,·B

•ÒWf[]fj...[]

•Ò□W□{Žæ,è□ž,Ý(•Ò□W□{“\,è•t,¬)

fNfŠfbfvf{□[fh,©,ç%œ‘œ,đ,f,u,Öfy□[fXfg,μ,Û,·□B

•Ò□Wf□fj...□[

•ÒW{•Ž!fNfŠfA(•ÒW{Á<Ž)

Œ»Ý•Ž!,<sup>3</sup>,ê,Ä,ç,é%œ'œ,ðÁ<Ž,μ,Û,·B

•ÒWfjfj...I

## •ÒW{CE,F

Žw'è,<sup>3</sup>,ê,<sup>1/2</sup>F",É•Ž!,μ,Ä,φ,éff[f^,đCE,F,μ,Ü,:B

•ÒWfjfj...I

## •ÒW{‰ñ“]

‰æ‘œ,ì¶¶^‰E‰ñ“]•\Ž,đ,μ,Û,·B

•ÒWf¶fj...¶[



## • Ò W { % œ ' œ ~ ACE <

• \Ž!,<sup>3</sup>,ê,Ä,ç,é

%œ'œ,ìŽw'è,<sup>3</sup>,ê,½ • ûœü,É A V,½,Éff[f^,ð“Ç,Ýž,Ý A ~ ACE < • \  
Ž!,μ,Û,· B

• Ò W f f f f ...

## •\Ž!f□fjf...□I

•\Ž!□{‘S%oæ-Ê•\Ž!

•\Ž!□{fTfCfYŽ©“®’²□®

•\Ž!□{Šg’â•\Ž!

•\Ž!□{‰oæ’œ□î•ñ

•\Ž!□{fhfLf...f□f“fg

•\Ž!□{fffBfXfvfĀfC□î•ñ

fRf}f“fh

•\Ž![]{'S%œ-Ê•\Ž!

'S%œ-Ê•\Ž!,μ,Û,·[]BfL[],đ%Ÿ,·,©[]Af}}fEfXfNfŠfbfN,ÅCE³,É-ß,è,Û,·[]B

•\Ž!f[]fif...[]

•\Ž!{ftfcfYŽ©“®’²®

Œ»Ÿ,î^Ê’u,ÅACE»Ÿ,ì•\Ž!ff[f^,đ,Å,«,é,¾,´’â,«,•\Ž!,Å,«,é,æ,α  
,ÉfEfCf“fhfE,ìTfCfY,đ•ïX,μ,Û,·B

•\Ž!föfif...[]

## •\Ž!□{Šg'â•\Ž!

Žw'è,<sup>3</sup>,ê,<sup>1/2</sup>Šg'â—!,Åff□[f^,đ•\Ž!,μ,Ü,·□BŽÀ□Ů,É,íflfvfVf#f“□{Šg'â—  
↓,Å□Ý'è,<sup>3</sup>,ê,<sup>1/2</sup>Šg'â—!,Æ□A,±,ìf□fjf...□[,ÅŽw'è,<sup>3</sup>,ê,<sup>1/2</sup>Šg'â—!,đŠ|  
,□#,í,<sup>1</sup>,<sup>1/2</sup>”{—!,Å•\Ž!,<sup>3</sup>,ê,Ü,·□B,Ü,<sup>1/2</sup>□A,±,±,ÅŽw'è,μ,<sup>1/2</sup>Šg'â—  
!,í□ACE»□Ý,ìff□[f^,ì•\Ž!,ì,Ý,É”<sup>1/2</sup>%of,<sup>3</sup>,ê,Ü,·□B

•\Ž!f□fif...□[

## •\Ž!;{‰œ'œî•ñ

•\Ž!,μ,Ä,ç,éff[f^,ìî•ñ,đ•\Ž!,μ,Ü,·B•\Ž!,³,ê,éî•ñ,í‰œ'œ,ìŽí—  
p,É,æ,Á,Ä^Ù,È,è,Ü,·,ªAŠî-{"I,É,ÍTfCfYAff[f^,É,Â,ç,Ä,ç  
,éfRf"fg,È,Ç,Å,·B

•\Ž!;fif...[]

## •\Ž!{fhfLf...f“fg

%œ'œftf@fCf<,ÉfhfLf...f“fgftf@fCf<,ª•t'® ,μ,Ä,ϕ,ê,î,» ,ê,đ•\  
Ž!,μ,Ü,·Bf}fEfX,ì%œEf{f^f“ ,ìf\_fuf<fNfŠfbfN,Å,à%œÂ”\,Å,·B

•\Ž!f“fif...[]

•\Ž!{fffBfXfvfCfCî•ñ

fffBfXfvfCfCfhf%ofCfo,ì<@”\,đŽ!,μ,Û,·B

•\Ž!fñfif...L



## f!fvfVf#f“f[]fj...[]



f!fvfVf#f“f[]{—~—pŠÂ<<



f!fvfVf#f“f[]{Šg'â—!



f!fvfVf#f“f[]{CE,[]E



f!fvfVf#f“f[]{fAfXfyfNfg”ä



f!fvfVf#f“f[]{•\Ž!ff[]f^



f!fvfVf#f“f[]{•Û'¶ŠÂ<<



f!fvfVf#f“f[]{ftfHfgCD[]Ý'è

fRf}f“fh

## lfvfVf#f" { - ~ - pŠÂ<<

### Machine

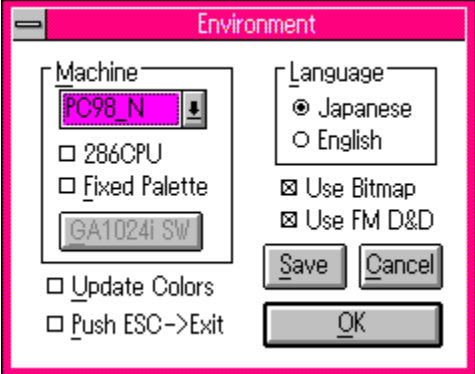
^È%º,ì<@Ží,ª'í'ð,Å,«,Ü,·B  
PC98\_N PC9801(16F)+NEC  
WIN3.0/3.0A/3.1,EPSON WIN3.1  
PC98\_E31 PC9801(16F)+EPSON  
WIN3.1(/98N,ÅF,ª,¨,©,µ,¢ê#)  
PC98\_E3A PC9801+EPSON WIN3.0A  
GA1024i PC9801+GA1024i(Ā'èfpfĀfbfg"Ā)  
VGA\_16 VGA  
OTHERS Ā<L^ÈŠO,ìfpfĀfbfg}f[]fWff[í%ž<@Ží  
[] 286CPU 286<@Ží,ĀŽw'è,µ,Ā%º,³,¢  
[] Fixed Palette Ā'èfpfĀfbfglfvfVf#f"  
GA1024i SW <@Ží,ðGA1024i,É,µ,½,Ā,«[]Ý'è"Ô[]†,ðŽw'è,µ,Ü,·

### Language

•\Ží,·,é,Ā,«,ÉŽg—p,·,éĀ¾Āê,ðŽw'è,µ,Ü,·

[] UpdateColor "ñfAfNfefBfuŽž[]Ā•`%ºælfvfVf#f"  
[] Push ESC->Exit ESCfL[][%ºŸ%ºŽž[]l—¹lfvfVf#f"  
[] Use Bitmap f[]fbfgf}fbfv—~—p[]lfvfVf#f"  
[] Use FM D&D ftf@fCf<f}f[]fWff"ĀŽ©,ìfhf%ºfbfO[]•fhf[]fbfv,ì—  
~—p,ì—L-³,ð[]Ý'è,µ,Ü,·[]BWindowsNT,Ā—~—  
p,·,é,Ā,«,É,í[]A,±,ìlfvfVf#f",ðOFF,É,µ,Ā  
%º,³,¢[]B

lfvfVf#f" f[]jf...[]



## flvfVf#f“□{Šg’â—!

•\Ž!ff□[f^,đŽw’è,μ,½”{—!,Å•\Ž!,μ,Ü,·□BfY□[f€—  
!,đŽw’è,·,éf\_fCfAf□fOf{fbfNfX,ª•\  
Ž!,³,ê,Ü,·□BŽw’è,Å,«,é”í^í,í10,©,ç999,Ü,Å,Å,·□B



## Quantization Options

Quantization    ON/OFF/AUTO

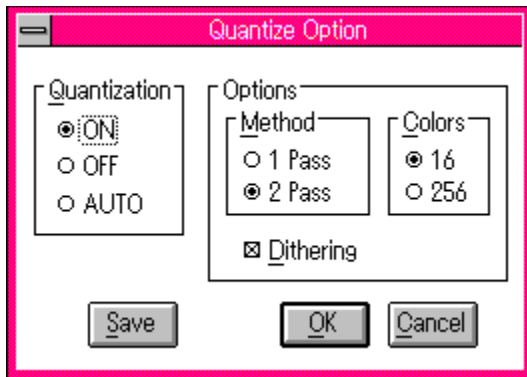
Options

Methods 1pass/2pass    1 Pass/2 Pass

Colors 16/256    16/256

Dithering     Dithering

Quantization Options



## fifvfVf#f“ fAfXfyfNfg”ä

Aspect Ratio fAfXfyfNfg”äŽw’èlfvfVf#f“

Auto Adjust to CG •\

Ž!ff[f^,É#f,í,1,ÄfAfXfyfNfg”ä,đŽ©“®’2®,,éi, o,h,bCE`Ž®,ì,Ýj

### Method

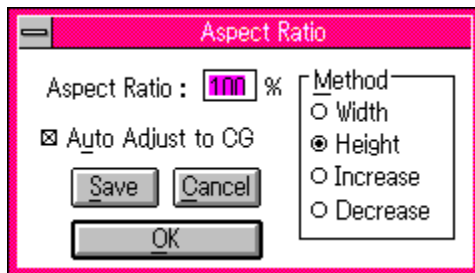
Width •\Ž!•f,đ’2® ,μ,ÄfAfXfyfNfg”ä,É, ,í,1,é

Height •\Ž!f,,3,đ’2® ,μ,ÄfAfXfyfNfg”ä,É, ,í,1,é

Increase flfŠfWfif<,æ,èŠg’â,3,é,é•ûCEü,É’2® ,μ,ÄfAfXfyfNfg”ä,đ, ,í,1,é

Decrease flfŠfWfif<,æ,èk[-,3,é,é,æ,α,É’2® ,μ,ÄfAfXfyfNfg”ä,đ, ,í,1,é

fifvfVf#f“ f fjf... f



## flfvfVf#f“f{•\Ž!ff[f^

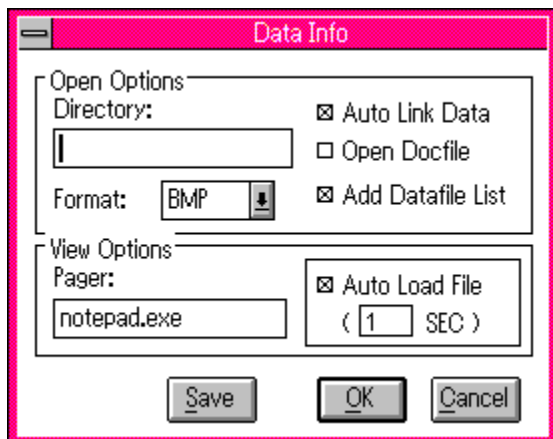
### Open Options

Directory ff[f^ftf@fCf<,l'¶[Y,·,éfffBfCEfNfgfŠ,ì[Y'è  
Format “Ç,Ý[ž,P%œ'œCE`Ž®,ì[Y'è  
 Auto Link Data Ž©“®~ACE<•\Ž!flfvfVf#f“  
 Open Docfile fhfLf...f[f“fg•\Ž!flfvfVf#f“  
 Add Datafile List fhf  
%fbfO•fhf[fbfv,μ,½[V,μ,çff[f^,ðff[f^f  
ŠfXfg,É%Á,!,é,Æ,«,É[Aff[f^fŠfXfg,ÉŠù,É,  
éff[f^,ðŽc,·,©[AfNfŠfA,·,é,©,ì[Y'è

### View Options

Pager fhfLf...f[f“fgftf@fCf<,ð“Ç,P,½,ß,lfy[fWff[l,ì[Y'è  
 Auto Load File •i“%œ'œ~A'±•\Ž|Žž,ÉŽ©“®•\  
Ž|,·,é[iŽ©“®•\Ž|,·,é[é[¶[Af|  
[fYŽžŠÔ,ð[Y'è,·,é[j

## flfvfVf#f“f[fj...[



## fifvfVf#f“□{•Ů‘ŕŠÂ<<

View Image

%œ’œfZ□[fuŽž,É•\

Ž!fCf□□[fW,ÅfZ□[fu,·,é,©,Ç,æ

,©,ìŸ’è,Å□ACE,□FÆã,ì□F□”,Å□A•\

Ž!’t,ìŠg’â—

!□AfifvfVf#f“□{fAfXfyfNfg”ä,ì’l,ª”½%of,³,ê,é

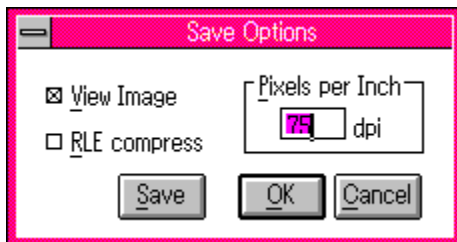
RLE compress

RLE^³□k,ð,μ,ÄfZ□[fu,·,é□Ÿ’è

Pixels per Inch

fZ□[fu,·,éftf@fCf<,ÉŽw’è,³,ê,½

%ð’œ“x,ð□’,<□ž,þ

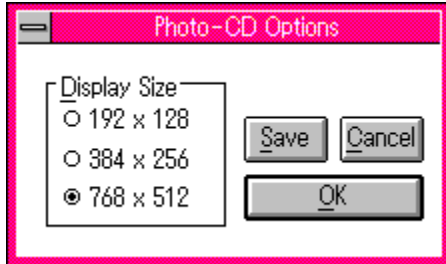




## ftfHfgCD

ftfHfgCD,ì•\Ž!fTfCfY,đŽw'è,·,é

ftfHfgCD



fwf<fvf fjf...l



fwf<fv {ø^ø

fwf<fv {fRf}f“fh

fwf<fv {fwf<fv, iŽg, ç•û

fwf<fv {fo [fWf+f“î•ñ

fRf}f“fh

[fwf<fv□{□õ^ø](#)

.f,ufwf<fv,ì-ÚŽŸ,ð<N“®,μ,Ü,·

fwf<fvf□fjf...□[

## **$f_{w \leftarrow f_v} \{f_{Rf}\} f^{\text{fh}}$**

$f, u_{f_{w \leftarrow f_v}, \{f_{Rf}\} f^{\text{fh}}}$  —,  $\delta \langle N \rangle^{\otimes}, \mu, \ddot{U}, \cdot$

$f_{w \leftarrow f_v} \{f_{Rf}\} f^{\text{fh}}$

## fwf<fv □ {fwf<fv, ðŽg, ç•û

fwf<fv, ðŽg, ç•û, ðfwf<fv, ð•\Ž!, µ, Ü, ·

fwf<fv □ fjf... □ [

## fwf<fv□{fo□[fWf#f“□î•ñ

.f,u,É,Â,ç,Ä,ì'~`ì`CE □î•ñ“™,ð•\Ž!,μ,Ü,·□B

fwf<fvf□jf...□[

## [fhfLf...f f“fgftf@fCf<](#)

%oæ'œftf@fCf<,i□à-¾,ª“ü,Á,½ftf@fCf<,i,±,Æ□B  
%oæ'œftf@fCf<,Æ“~,¶ffBfÆfNfgfŠ,É“~,¶ftf@fCf<-  
¼,ÅŠg'£Žq,ªDOC,Q4D,TXT,ìftf@fCf<,ª'¶□Ý,·,é,Æ,«,íŽw'è,μ,½fy□□fWff□□,ÅfhfL  
f...f□f“fg,đ•\Ž!,μ,Ü,·□B

## Žg—pã,ì'ò“

- 1) f,u,É,Â,ç,Ä,Í,Æ,Ñ,½,ª□A,Ü,½,f,u,lfwf<fvftf@fCf<,É,Â,ç,Ä,Í□AZRCE`'ãŠw,n,a,<sup>3</sup>ñ□A,x,t,h,o,n,<sup>3</sup>ñ□A,Æ,Ñ,½,ª'~ìCE ,ð—L,μ,Ä,ç,Ü,·□B,Ü,½□AfAfCfRf“ ,É,Â,ç,Ä,Ípfl,<sup>3</sup>ñ,ª'~ìCE ,ð—L,μ,Ä,ç,Ü,·□B
- 2) ,±,lfvf□fOf%of€ ,ì'~ìCE □î•ñ□iCopyright•\Ž!j,ð□' ,«Š·,¡,È,ç,Å,,¾,<sup>3</sup>,ç□B
- 3) ,±,lfvf□fOf%of€ ,ðBBS“™ ,Å”Đ•z,·,é,±,Æ,ÍŽ©—R,Å,·□B  
 ,» ,ì□Ú,É,Í□A^È%º,ì,±,Æ,ð□...Žç,μ,Ä,,¾,<sup>3</sup>,ç□B
  - a) flfŠfWfif<,ì,Ü,Ü,Å”Đ•z,μ,Ä,,¾,<sup>3</sup>,ç□B
  - b) ”Đ•z,·,é□Ú,É,Í□A•t'® ,lf}ffj...fAf<□EfhfLf...f□f“fg,ð“Y•t,μ,Ä,-¾,<sup>3</sup>,ç□B,Ü,½□A□Ä”Đ•z,·,é,Æ,« ,Í□A'~ìŽÒ,É,» ,ìŽ|~A—□,ð%º,<sup>3</sup>,é,ÆŠð,μ,ç,Å,·□B
  - c) ,±,lfvf□fOf%of€ ,ð”Đ•z,·,é,É“—,Á,Ä<à'K,ìŽöŽó,<sup>a</sup> ,Á,Ä,Í,È,è,Ü,<sup>1</sup>,ñ□B' A,μ□AfffBfXfPfbfg'ã,È,Ç,ìŽÀ”i,É,Â,ç,Ä,Í,±,ìCEÀ,è,Å,Í, ,è,Ü,<sup>1</sup>,ñ□B
  - d) □κ<Æ“l—Ú“l,Å”Đ•z,·,éŽž,É,ì'~ìŽÒ,É~A—□,ð%º,<sup>3</sup>,ç□BCEÂ•É,É'î%ž,μ,Ü,·□B
  - e) “ñŽŸ“ ]□Ú(Nifty Serve FWINF/FGALAV/FQLD1^ÈŠO,©,ç,ì“ ]□Ú) ,ì□ê□‡,Í□A^êŽŸ“ ]□ÚŽÒ,<sup>a</sup>□A□ã<L“o~^□æ,ìfo□[fWf‡f“fAfbfv,É'î%ž□o—^ ,é□ê□‡,ì,Ý,É,μ,Ä,,¾,<sup>3</sup>,ç□B
- 4) -{fvf□fOf%of€ ,ðŽg—p,·,é,±,Æ,É,æ,Á,Ä<N,« ,é'ŠQ“™ ,É,Â,ç,Ä□A'~ìŽÒ,Í^ê□Ø□Ó”C,ð•%º,ç,Ü,<sup>1</sup>,ñ,ì,Å,» ,ì,p,È,<sup>2</sup>—<sup>1</sup>□<sup>3</sup>,-¾,<sup>3</sup>,ç□Bfo□[fWf‡f“fAfbfv□AfofO'î%ž,È,Ç,É'î,·,é□Ó”C,à•%º,í,È,ç,à,ì,Æ,μ,Ü,·□B



—š—đ,Ĳ

V0.63b 1994/05/02

V0.63b 1994/05/09

CTL3D.DLL/CTL3DV2.DLL,ì,Ç,¿,ç,©,ª, ,ê,îŽg,æ<@“\’Ç%Á□B  
fpfX-¼,ì’,çftf@fCf<,đ”FŽ~,µ,È,çfofO,đFIX□B  
DDE,ìFileOpen/FileOpenEx,ìftf@fCf<-¼,đ””,ÅŠ±,Á,Ä,à”FŽ~,·,é,æ,æ,æ  
,É□C□³□B  
<N“®fifvfVf±f”,ì□®—□□B  
□V,µ,ç%æ’œ,đ•\Ž|,µ,½,Æ,«,ÉfAfNfefBfu,É,È,é,æ,æ,æ,É-ß,µ,½□B%æ’œ  
%œñ”]ŽŽ“™,ÉfXfNf□□[f<□%Šú%œ»,đ,µ,È,ç,±,Æ,ª, ,éfofO,đFIX□B

V0.63a 1994/04/30

,s,h,e,eCE`Ž®“Ç,Ý□ž,ÝŽž,É,à\_lxxxx()CEnŠÖ□”,đŽg,æ,æ,æ,É•ī□X□B  
f<□[fgfffBfCefNfgfŠ,ìftf@fCf<,đ”FŽ~,µ,È,çfofO,đFIX□B  
ftfCfYŽ©“®’²□®,ìfofO,đFIX□B

V0.63□@1994/04/20

,s,h,e,eCE`Ž®,É’î%ž□B  
,p,OCE`Ž®,É’î%ž□B  
,q,k,dCE`Ž®,É’î%ž□B  
,o,h,bCE`Ž®(0x0f:24Bit),É’î%ž□B  
DDEfT□[fo,Æ,µ,Ä,ì<@“\’Ç%Á□B  
Šg’£Žq,đRLE/DIB->BMP□ARGB->Q0,É’u,«Š·,ì,Ä•\Ž!(Drag&Drop,ì,Ý)□B  
fZ□[fuŽž,ìrfbfgf}fbfv,ì%đ’œ“x(dpi),ìŽw’è<@“\,ì’Ç%Á□B  
fZ□[fuŽž,ìRLE,É,æ,é^³□k<@“\,ì’Ç%Á□B  
f□fjf...□[□\□→,ì•ī□X□B  
•\Ž!,ì,Ý,ìŠg’â—ì,ì’Ç%Á□B  
JPEGf%ofCfuf%ofŠ,đV3->V4,É•ī□X(GrayScale,ìftfj□[fg]□B  
JPEG•\Ž!%Á”\ftfH□[f}fbfg,ì’Ç%Á(fRf□f“fg□AMulti Strip)□B  
JPEG,ì“ÁŽê,Èff□[f^,ª•\Ž!□o—^,é,æ,æ,æ,É-ß,µ,½(PICT/JPEG)□B  
PhotoCD,ì•\Ž!,ÉŽg,Á,Ä,ç,½hpcdtoppm,ìf<□[f`f”,đŽ©’O,ìf<□[f`f”,É’u,«  
Š·,ì,½□B  
f□f,fŠ,ª’«è,È,ç,Æ,«,íUseBitmap,ªON,Å,àBitmap,đŽg,í,,É•\Ž!,·,é<@“\’Ç  
%Á□B  
ftf@fCf<f}f□[fWff“Á—Lfhf%ofbfO□•fhf□fbfv<@“\,ì—~—p,đ□Ý’è□o—  
^,é,æ,æ,æ,É•ī□X□B  
f□[f{□[fh,É,æ,éŽÀ□s%Á”\,È<@“\,ì’Ç%Á□B  
’S%œ-É•\Ž!,đfL□[,ª%Ÿ,³,ê,½,Æ,«,É,à”²,\_,é—ì,É•ī□X□B  
fpfCefbfg,ì^Ù,È,Á,½%œ’œ,ì~ACE<<@“\,ì’Ç%Á□B  
CE,□Ff□fjf...□[,ì’Ç%Á□B  
fy□[fXfgŽž,ÉBITMAP,ì,Ý/BITMAP+PALETTE,ìff□[f^,É’î%ž□B  
fy□[fXfg,µ,Ä,«,½ff□[f^,ìî•ñ,ì•\Ž!<@“\,ì’Ç%Á□B

EPSON Windows3.1f,[]fh,ì'Ç%oÁ[]A<y,ÑWindows3.0f,[]fh,ì"pŽ~[]B  
JPEG"Ç,Ýžž,ÝŽž,ìfGf%o[][^—[](error\_exit),ìfofO,ðFIX[]B  
OpenFile,©,ç\_lopen/\_lcreatŠÖ[]",ì—~—p,É•ì[]X[]B  
GIF,ì[]ì<Æ—ì^æŠm•Û•û-@,ì•ï[]X[]B  
GIF,ì8[]Fff[]f^,ì"Ç,Ýžž,ÝŽž,ìpfÆfbfg[]",ìÝ'è,ìfofO,ðFIX[]B  
ViewImage,Å•Û'¶,·,é,Æ,«[]AZ,"s,·,é,±,Æ,ª, ,éfofO,ðFIX[]B  
/Wdfìfvfvf#f",ìfofOFIX[]B  
BMP,ì•\ŽìfCf[][]fW,ª, ,é,é,±,Æ,ª, ,éfofO,ðFIX[]B  
%opÆêf,[]fh,ÅXBM,ìINFO,ð•\Žì,·,é,ÆfGf%o[][,É,È,éfofO,ðFIX[]B  
%oæ'œ[]Ä•`%oæŽž,É98fpfÆfbfg,ª"½%of,³,è,È,ç,±,Æ,ª, ,éfofO,ðFIX[]B  
/ZM[]A/AS,Å[]Ý'è,ª,æ,Û,,ç,©,È,çfofO,ðFIX[]B  
ftf@fCf<fZ[]fuŽž,É""^êftf@fCf<,ª, ,Á,½,Æ,«,ì[^—[],ìfofO,ðFIX[]B

—š—đ,S

V0.62 1993/10/16

,o,%œ`Ž®,É'î%ž□B  
PhotoCDftfH□[f}fbfg□i,o,b,cœ`Ž®□j,É'î%ž□B  
Ž©“®~A'±•\Ž|<@“\,l'Ç%Á□B  
'S%œ-É•\Ž|<@“\,l'Ç%Á□B  
,o,h,bœ`Ž®,lŠg'£fwfbf\_,l^ê•“,É'î%ž□B  
ftf@fCf<fŠfXfg,Ö,l□X□V“o~^f,□[fh,l'Ç%Á□B  
ftf@fCf<fŠfXfg,l'SfNfŠfAf{f^f“,l'Ç%Á□B  
ftf@fCf<fZ□[fuŽž,Éf}fEfXfj□[fj<,đ•l□X□B  
ftf@fCf<“Ç,Y□ž,YŽž,Éf}fEfXfj□[fj<,l□»Žžœv%»□B  
ftf@fCf<fZ□[fu“r't,Á□',«□ž,YfGf  
%o□[l,ì,Æ,«□A□',«□ž,Y,ÉŽ,“s,μ,½ftf@fCf<,đ□í□œ,·,é,æ,α,É•l□X□B  
,l,`fœ`Ž®,lftf%ofoA,lftfCfY,lœvŽZ•û-@,đ•l□X□B  
<@“\Šg'£,³,ê,½,à,l,É,Á,ç,Ä□A^ø□“Žw'è,đ%Á“\,É,μ,½□B  
V0.61,Á,ç,ê,Ä,μ,Û,Á,½,o,h,bœ`Ž®,l0x00/16bitff□[f^,ª\Ž|□o—  
^,É,çfofO,đFIX□B  
ftf@fCf<fŠfXfg,l•l□X,ªftf@fCf<fŠfXfgf□jfj...□[,Ö”½%of,³,ê,È,çfofO,đFIX□B  
ftf@fCf<f}fl□[fWff,©,ç•\Ž|'t,ÉDrag&Drop,ª□o—^,½fofO,đFIX□B  
Šg'â□^□k□-Žž,ÉfTfCfY,ª,Pfhfbfg^Û,É,é,±,Æ,ª, ,éfofO,đFIX□B  
“Ç,Y□ž,Yf\_fCfAf□fO,Á□A'l'đ□o—^,éfhf%ofCfu□“,lžæ“¾•û-@,l□C□³□B  
Šg'â—l,ì•l□XŽž,ÉfXfNf□□[f<^Ê'u,l,l,Y□o,·fofO,đFIX□B

—š—đ,R

V0.61 1993/08/20

•i;□"ftf@fCf<,ìDrag&Drop,ì~A'±•\Ž!<@"\□B  
Šù•\Ž!ftf@fCf<,ìÄ•\Ž!<@"\□B  
f□fjf...□[,ì"ú- {Œê%»□B  
Ž©"®~ACE<"Ç,Ý□ž,Ý•\Ž!<@"\□B  
%œ'œ•\Ž!žžfhfLf...f□f"fg"~Žž•\Ž!<@"\□B  
•\Ž!fCf□□[fwfZ□[fu□EfRfs□[<@"\,ì'Ç%Á□B  
f}fEfX,ì□f\_fuf<fNfŠfbfN,É,æ,éŽŸftf@fCf<•\Ž!<@"\□B  
f}fEfX,ì%Ef\_fuf<fNfŠfbfN,É,æ,éfhfLf...f□f"fg"•\Ž!<@"\□B  
.o,h,bCE`Ž®(0x01:88VA/8Bit,0x0f:8Bit),É'î%ž□B  
.o,h,bCE`Ž®,Á8/4Bit,ì" ,ì•\Ž!,μ,½ff□[f^,àŒ³,Æ" ,□Bit□",Á•\Ž!, ,é,æ,α  
,É□C□³□B  
.o,h,bCE`Ž®•\Ž!žž,É□F,ª^Ã,©,Á,½•"(0x21:88VA/8Bit)  
,đ□C□³□Bftf@fCf<,đ<N"®Žž□A<y,ÑDrag&Drop,ÁŽw'è,μ,½ftf@fCf<,ª•\  
Ž!□o—^,É,ç,à,ì,ì,Æ,«,ì□^—□,đ•ì□X□B98flfvfVf#f"Žž□Af□fjf...  
□[ì'đŽž,ÉfpfŒfbfg,ª•W□€,É-β,é,æ,α,É•ì□X□B  
ff□[f^,ì"Ç,Ý□ž,Ý't,ì□|—¹□o—^,È,ç,æ,α,É,μ,½□B  
fTfCfY,ì'â,«,É,i,o,d,fCE`Ž®,ì•\Ž!žž,lfnf"fOfAfbfv,đ%ň"đ□B  
fAfXfyfNfg"äŽ©"®'²□®,ª,o,h,bCE`Ž®^ÈŠO,É%œ<¿,đ—^,ì,éfofO,đFIX□B  
UseBMP,đŽw'è,μ,È,ç,Æ,«,Éff□[f^,æ,è'â,«,ÈfEfBf"fhfE,É, ,é,Æ•\  
Ž!,μ,È,çfofO,đFIX□B  
fpfŒfbfg□",ªffftfHf<fg'ì^ÈŠO,ì,a,l,oCE`Ž®,ì"Ç,Ý□ž,ÝŽž,ìfofO,đFIX□B

V0.60a 1993/07/02

.o,h,bCE`Ž®(X68K)4BitftfH□[f}fbfg(0x00),É'î%ž□B  
fAfXfyfNfg"ä,ì'²□®•û-@,ì'Ç%Á□B  
□Èf□f,fŠf,□[fh,ì'Ç%Á□B  
%œ'œ%ň"]Žž,ìŽ©"®'²□®fAfXfyfNfg"ä,ì•â□³□B  
ESCfL□[‰Ÿ%žž□|—¹f|fvfVf#f",ì'Ç%Á□B  
—~—p□F□",ì□,È,ç%œ'œ,đŒ,□F,μ,½,Æ,«,ìfofO,đFIX□B

—š—đ,Q

V0.60 1993/06/13

CE, □F□^ —□,đ,·,x,Ä, ðftfH□[f}fbfg, ÅTf|□[fg□B  
CE, □F-³, μ, ðftf|□[fg□B  
, o, h, bCE`Ž®(X68K), ðftf|□[fg□B  
MS-Windows3.1, ðCEöŠj” ÅDrag&Drop<@”\, ð’í%ž□B  
%œ’œf□□[fh□ó<μ, ð\Ž!·û-@, ð·ï□X□if□ff...□[ -> f^fCfgr<□j□B  
flfvfVf†f”Žw’è·û-@□AfZ□[fu·û-@, ð·ï□X□B  
□%Šú%œ»ftf@fCf<, ðftfH□[f}fbfg, ð^ê·”·ï□X□B  
<@”\Šg’£, ³, ê, ½, à, ð, É, Â, †, Ä□A^ø”Žw’è, ð%Â”\, É, μ, ½□B  
fpfCEfbfg, ð·ï□X, ðfAfCfRf”Žž, É, í, s, í, È, †, œ, †, É, μ, ½□B  
, i, o, d, fCE`Ž®, Å·, ³0, ðfRf□[fg, ðff□[f^, ð·Ž!□o—^, È, †fofO, ðFIX□B  
, l, ` , fCE`Ž®, ð·”·œZ□[fu, ð”»’èŠî€□ACEvŽZ·û-@, ðfofO, ðFIX□B  
%œ’œ%œñ”]Žž, ðŽ©“®fEfBf”fhfEfTfCfY·ï□X□^—□, ðfofO, ðFIX□B

V0.59d 1993/05/21

□V<K%œ’œ, ð□ã□’, «Žž, É%œ-Ê, ðfNfŠfA, μ, È, †, œ, †, É·ï□X□B  
fhfLf...f□f”fgftf@fCf<, ðŠg’£Žq, É, s, w, s, à<- , ·, œ, †, É, μ, ½□B  
, l, ` , fCE`Ž®, ð·Ž!□s□”, ðfofO, e, h, w□B  
, a, l, oCE`Ž®, ðfy□[fXfg, ðfofO, e, h, w□B  
ŠžŽšff□[f^ftf@fCf<-¼, ðžæ, è^μ, †, ðfofO, e, h, w□B  
MS-Windows3.1j, Å, ðfhf%œfbfO□·fhf□fbfv, ðftf@fCf<-  
¼, ðžæ”¾, ðfofO, e, h, w□B

V0.59c 1992/12/14

<N”®Žž, ðff□[f^“Ç, Ý□ž, ÝffBfCEfnfgfŠ, ðŽw’è, Å, «, é—l, É, μ, ½□B  
, f, h, eCE`Ž®, ð·Ž!, ·, é, Æ, «, É, l, ` , b, ðfwfbf\_ , ð , Å, Ä, à%Â”\, É, μ, ½□B  
, f, h, eCE`Ž®·Ž!Žž, ðfofO□iVer.0.58^È□~□j, ð, e, h, w□B

V0.59b 1992/12/13

, l, ` , fCE`Ž®, ðCEŸ□ , ð’¼, ðff□[f\_ , É, , í, ¹, Ä, ä, é, , μ, ½□B  
, f, h, eCE`Ž®, Å·Ž!, Å, «, é, à, ð, ð^ê·”’Ç%Á, μ, ½□B

—š—ö,P

V0.59a 1992/11/25  
V0.59 1992/11/15  
V0.57a 1992/08/13  
V0.57 1992/08/05  
V0.56a 1992/07/01  
V0.56 1992/06/27  
V0.55a 1992/06/03  
V0.55 1992/06/01  
V0.54 1992/05/12  
V0.53 1992/04/11  
V0.52a 1992/04/05  
V0.52 1992/04/03  
V0.51 1992/03/31  
V0.50 1992/03/20

□i□·•ªŒöŠj"Å□j

[%œ'œĎŽ](#)

,f,u,Å,íĎÈ%œ,ì%œ'œĎŽ,đŽæ,è^μ,π,±,Æ,ª,Å,«,Û,·B

.a,l,oĎŽA,c,h,aĎŽA,l,`fĎŽA,l,`j,hĎŽA,p,SĎŽA,i,o,  
d,fĎŽA,f,h,eĎŽA,o,h,bĎŽA,o,%œĎŽA,s,h,e,eĎŽA,o,b,  
cĎŽA,p,OĎŽA,w,a,lĎŽA,wĎŽA,q,k,dĎŽ

^È%œ,ìĎŽ,íĎŽ»ÝAŽæ,è^μ,π,±,Æ,ªo—^,Û,<sup>1</sup>,ñB

.h,b,nĎŽA,b,t,qĎŽA,v,l,eĎŽA,X,Wfxf^ĎŽA,l,q,aĎŽ  
A,r,g,fĎŽA,b,f,lĎŽA,o,b,wĎŽA,l,r,oĎŽA,o,h,b,sĎŽA,  
d,o,rĎŽA,u,RĎŽA,c,w,eĎŽA,c,q,gĎŽA,c,q,vĎŽA,g,o  
|,f,kĎŽA,f,o|,f,kĎŽA,q,c|,f,kĎŽ





## ,c,h,aĀ`Ž®

fffofCfX,É^Ě'¶,μ,È,ϕfrfbfgf}fbfv,ì•\Ā»Ā`Ž® ,Ā,·BfffofCfX,É^Ě'¶,μ,È,ϕ,Ā,ϕ  
,Ā,Ā,à□A□F□",ì^Ù,È,é<@Ží,Ā•\Ží,³,ê,½□ê□#□A,» ,ì<@Ží,Ā,à,Ā,Ā,à<β,ϕ  
,Ā"»'f,³,ê,½□F,đŽg—p,μ,Û,·□B,²□A,±,ê,²Ā<□\,Ā,½,ç,β,È,ñ,Ā,·□B,Û,³,É,±,ê,đ  
%ođĀ^ , ,é^x,É,f,u,² , ,é,ĀĀ³⁄₄,Ā,Ā,à%oβĀ³⁄₄,Ā,Í,È,ϕ,Ā,μ,â,π□B



[.l,`j,hCE`Ž®](#)

,Ü,«,¿,á,ň,m,d,s,ÅŠJ",³,ê,½MAKI01A□AMAKI01BCE`Ž® ,Å,·□B—L-  
¼,ÈCE`Ž® ,Å,·□B

## **,p,SCE`Ž®**

,p,k,cftfH[]f%of€,ÅŽg,í,ê,Ä,ç,é-,□—Ž□,ìŠ” ,³,ê,½CE`Ž® ,Å,·□B  
 ,f,u,Å,Í,a,` ,sftf@fCf<,ì“à’ ,³,ê,½%œæ’œff[]f^ ,Í□A,a,` ,sftf@fCf<,ì•”•ª,ð-  
³Ž<,μ,Äff[]f^ ,ð•Ž!,μ,Ü,·□B,Ü,½□A,p,Sftf@fCf<,Æ“~ ,¶ffBfCEfNfgfŠ,É“~ -  
¼,ì,q,f,aftf@fCf<,ª“¶□Ý,·,é,Æ,« ,É,ÍpfCEfbfg,ð,q,f,aftf@fCf<,ì“à—  
e,É□Ý’è,μ,Ü,·□B

## .i,o,d,fCE`Ž®

,i,o,d,f[i]oint Photographic Experts Group[i]

,h,r,n[i]i'Ů•W[€%o»<@[]j,Æ,b,b,h,s,s[i]i'Ů“d[M“d~bŽ[-â^î^ö  
%oi[]j,É,æ,Á,Ä'g[D,³,ê,½[A%oæ'œff[f^³[]k,ì,½,ß,ìš[€É,ì,Á,Æ,Á,½^³[]k  
%oæ'œff[f^CE`Ž®,Å,·[]B  
,i,e,h,eCE`Ž®,ì,i,o,d,fCE`Ž®,Å,·[]B,o,b[]  
,u,`,m,ì,r,h,f[F'm“l[î•ñ[]ŽY“™,Éff[f^,è,Ü,·[]B  
,i,o,d,fff[f^“Ç,Ý[]ž,Ý[A•İŠ•”•ª,É,ÍIndependent JPEG  
Group,É,æ,Á,Ä[ì-³,ê,½f<[f`f“,ðCE³,É,µ,Ä,ç,Ü,·[]BCE»[Ý—~—p,µ,Ä,ç,éf  
%ofCfuf%ofŠ,ìfo[]fWf#“,í,S,Å,·[]B,i,o,d,fCE`Ž®,ð•\Ž|,·,é,É,½,Á,Ä[A,ç,-  
,Â,©,ìf|fvfVf#“,è,Ü,·,ì,Å[Af[]fj...[]l,ì'l'ð,ð,µ,Ä,¾,³,ç[]B  
CE,[]ff|fvfVf#“,ðŽw'è,·,é,Æ[A,i,o,d,fff[f^,ð•\Ž|,·,é,Æ,«Éftf<fj  
%o[],©,ç,Q,T,U[F,ÉCE,[]F,·,é,Æ,«É,P,o,`,r,r,Å[]s,æ,æ  
,É,µ,Ü,·[]B,»,ìCE<%oÊ[A•\Ž|,í'½[]-,,È,è,Ü,·,ª[A[]F,ìÄCE»[]«ª^«,,È,è,Ü,·[]B  
,Ü,½[AMAC,È,Ç,Á,Â,ç,ê,½PICT/JPEG^³[]k,ìftf@fCf<,É,à'í%ž,µ,Ä,ç  
,Ü,·[]B,P,Â,ìftf@fCf<,É•i[]”,ìff[f^,ªŠÜ,Ü,ê,Ä,ç,é[]ê[]#,É,í[A[]æª,ìff[f^,ì%  
i•[],Æ,»,ê^È~,ìff[f^,ì%o;•[],ª“~,[]žž,É,í[]c,É~ACE<,µ,Ä•\Ž|,µ,Ü,·[]B

## **,f,h,eĀ`Ž®**

,f,h,eĀGraphics Interchange FormatĀj

CompuServe ,Ā,ĭšj” ,<sup>3</sup>,ĕ,½Ā`Ž® ,Ā,·ĀB

Ā»foĀ[fwf#f” ,Ā,ĭ,f,h,e,w,v,ĀĀA,w,x,Ā,ĭĀĀ,ç,ĕ,½  
%œ’œffĀ[f^Āi,Pftf@fCf<,P%œ’œĀj,ĭ,Ÿ•\Žĭ%Ā”\,Ā,·ĀB,½,¾ĀĀĭ-  
{“ĭ,Ē,ĭ,w,x,Ā,Āšg’Ē,<sup>3</sup>,ĕ,½<@”\,Ē,Ā,ç,Ā,ĭ’ĭ%ž,μ,Ā,ç,Ů,<sup>1</sup>,ňĀB

## **,o,h,bCE`Ž®**

-ö`ò@-¾,¾,ñ,¾½F%œ'œi"Á,É,w,U,W,j—p,j,ÉŠ",¾,ê,½  
%œ'œftfH[f]fbfg,Å,·B"Á,ÉŽè',«,ì%œ'œff[f^,ì³k,É,Í,ç,æ,π  
,Å,·B,à,Æ,à,Æ,Í,w,U,W,jê—  
p,É<β,©,Á,½,ì,Å,·,ªACE»Ý,Å,íA,l,` ,bA,o,b,W,WA,» ,ì¼,ç,ë,ç  
,ë,È<@Ší,É^ÚA,¾,ê,Ä,ç,Û,·B,o,h,bCE`Ž®,í,i,o,d,fCE`Ž®,Æ^á,çA  
%oÂ<t³k,Å,·,ì,Å%œ'œî•ñ,ì—ò%» ,í, ,è,Û,¹,ñB,½,¾,μA,» ,ì•ª³k—|,ª'á,ç  
,½,βA,æ,è³k—|,ì,,çPIC2i%¼ìjftfH[f]fbfg,ðŠj""t,Å,·B  
CE³XX68K,Åì,ç,ê,½ff[f^,ª½,ç  
,½,βAX68K,ìff[f^f^fCfv,ì,à,ì,ífAfXfyfNfg"ä,ðŽ©"®"l,ÉC³,μ,Ä•Ž!,·,é,±  
,Æ,ª%oÂ"\,ÈflfvfVf†f",ª—p^Ó,μ,Ä, ,è,Û,·B0x00/0x01/0x03/0x11/0x21/0x52/  
0xC2/0x0F/0X1F/0XFF,ÅA16/256/4096/32K/64K/16M\F,ì,à,ì,ðCE»Ýftf|  
[fg,μ,Ä,ç,Û,·B,½,¾,μA•"•ª•Ž!<@"\,ífTf|[fg,μ,Ä,ç  
,Û,¹,ñBŠg'£ftfH[f]fbfg,ìê•",É'í%ž,μ,Û,μ,½B

## ,o,%oCE`Ž®

-ö'ò@-¾,³,ñ,ŠJ",³,ê,½,P,U□FfOf  
%oftfBfbfNftfH□[f}fbfg,Å,·□B□i,o,h,bCE`Ž®,æ,è,b(olor),²□,È,ç,½,ß,o,%o  
,Æ,È,Á,Ä,ç,Ü,·□B"Á'¥,Æ,μ,Ä,Í^³□k—!,â"WŠJ'—"x,²CE<□\—D,ê,Ä,ç,é"\_,²,°,ç,ê,  
Ü,·□B  
ff□[f^,É,Í□A16/256□F□AfpfCEfbfg□î•ñ, ,è□^ffftfHf<fgfpfCEfbfg—~—  
p,ì'g,Ý□‡,í,¹,Å,SŽÍ—P'¶□Ý,μ,Ü,·,²□AŽèŽ□,¿,ìff□[f^,ÉffftfHf<fgfpfCEfbfg—~—  
p,ì,à,ì,²,È,©,Á,½,½,ß□AfefXfg,μ,Ä,ç,Ü,¹,ñ□B



## .s,h,e,eCE`Ž®

Tagged Image File Format ,ÍfAf<f\_fXŽĐ<y,Ńf}fCfNf□f\  
ftfgŽĐ,afXfLfffi,ì^x,ÉŠJ” ,μ,½CE`Ž® ,Å□AfOfCE□[fXfP□[f<,đ□\_“î,É•\CE»□o—  
^,é,ì,ª“Á¥,Å,·□Bf^fOf□[f^,Æ,μ,Ä<@Ží,ìî•ñ,đŠÜ,Ü,¹,é,±,Æ,ª□o—  
^,é,½,β□A,½,,³,ñ,ìŽí—p,ª, ,è,Ü,·□B,f,u,U,R,í^È%º,ì,à,ì,É^î%ž,μ,Ä,ç,Ü,·□B

- ”□•2^l%ºæ’œ (Class B)
- ”□•¹½ŠK’²%ºæ’œ (Class G)
- ÊßÚ~Ä¶x°ºæ’œ (Class P)
- 24ËP~ÄìÜ¶x°ºæ’œ (Class R)
- CMYKCE`Ž®¶x°ºæ’œ (Class S)
- TOWNSCE`Ž®%ºæ’œ (TOWNS“ÆŽ©)

,Ü,½□Af%ofCfuf%ofŠ,Æ,μ,ÄTIFFKIT v1.27,đ,f,u—p,É’²□β,μ,½,à,ì,đ—~—  
p,μ,Ä,ç,Ü,·□B

Based in part of TIFFKIT Copyright(C) 1991-1994 Noboru Abe

□! TIFF ,àŽž’ă,Æ<α,É•î’J,μ,Ü,μ,½□BCE»fo□[fWf#f“,Í□ATIFF Version 6.0  
,ª•□’É,Å,·□B

**,o,b,cE`Ž®**

KodakŽĐ,ì“o~^□x•W□i,¾,ÆŽv,ç,Ü,·□H□j,Å□AŽÊ□^,đCD-ROM,É□Ä,«•t,¯,é,Æ,«,ÉŽg,xE`Ž®,Å,·□B□iPHOTO-CD□j

,f,u,Å,Í^È%º,ìfvf□fOf%of€,đE³,É□A,Ü,½“ÆŽ©,Éff□[f^%đ□í,đ,“,±,È,Á,Ä•\Ž!,μ,Ä,ç,Ü,·□B

/\* hpcdtoppm (Hadmut's pcdtoppm) v0.5pl1  
□@\* Copyright (c) 1992, 1993 by Hadmut Danisch  
(danisch@ira.uka.de).

,Ü,½□A,f,u,Å,Í□¬,³,çfTfCfY,R,Â,É,μ,©'í%ž,μ,Ä,ç,Ü,¹,ň□B

## **,p,OE`Ž®**

%œ'œ•\Ž!,ì,½,ß,Éff[f^fTfCfY,ìî•ñ,đFAL/IPRftf@fCf<,©,çŽæ“¾,μ,Ä,φ  
,Ü,·B,±,ì,Ç,¿,ç,©,ìftf@fCf<,³Q0ftf@fCf<,Æ“˘,¶fffBfÆfNfgfŠ,É'¶Y,μ,Ä,φ,È,φ  
,Æ,«,É,íA640x400,ì%œ'œ,Æ,μ,Ä•\Ž!,μ,Ü,·B

[,w,a,ICĚ`Ž®](#)

,w|,v,%o,Ž,,,□,— ,Ā,ìĚ`Ž® ,Ā,·□B

,f,u,Ā,íff□[f^“à,ì /\* fRf□“fg \*/ •”•<sub>q</sub>,đ•\Ž!,μ,Ü,·□B

**,wCE`Ž®**

,i,t,m,d,s□ã,Å,ì,w,a,l,đ%ü—Ç,μ,½CE`Ž®,Å,·□B

## **,h,b,nĚ`Ž®**

,v,h,m,c,n,v,r,É,¨,´,éAfCfRf“,ì•W□€Ě`Ž® ,Å,·□B,v,h,m,c,n,v,r,R□D,P•t’® ,ì  
fAfNfZfTfŠ,ì’t,ìfAfCfRf“fGfffBf^ ,Å“Ç,Ý□ž,p,±,Æ,ª□o—^,Ü,·,ª□A^ê•”,ìftfŠ□[f\  
ftfg,Å□ì,ç,ê,½fAfCfRf“,í“Ç,Ý□ž,ß,È,ç,±,Æ,ª, ,è,Ü,·□B,» ,ì□ê□‡,ífvf□fOf  
%of€f}f|□[fWff“™ ,É“o~^ ,µ,½Ěă□AfXfifbfvfVf‡fbfg,É,æ,é,a,l,o,Ö,ì•İŠ, ð□s,ꝛ  
,±,Æ,ª□o—^,Ü,·□B

## **,b,t,q€`Ž®**

,v,h,m,c,n,v,r,É,¨,¯,éj][f]f<,ì•W[€€`Ž®,Å,·[B,v,h,m,c,n,v,r][  
,r,c,j,R[D,P•t'®],ìCf][fWfGfffBf^,Å“Ç,Ý[ž,p,±,Æ,ª[o—  
^,Ü,·[B,»],ì€ă,a,l,o€`Ž®,Æ,µ,ÄfNfŠfbfvf{[f]h,É“]’—[o—^,Ü,·[B

## [.q,k,dCE`Ž®](#)

,v,h,m,c,n,v,r,É,¨,¯,é•W□€,ì%œ‘œ^³□kCE`Ž®,Å,·□Bf  
%of“fCEf“fOfXfGf“fR□[fhftf@fCf<(Run-Length Encoded File),ÆCEÄ,Î,ê,Ä,ç  
,Ü,·□B,v,h,m,c,n,v,r,ì□Å□%o,ì□fS%œ-Ê,Í,±,ìCE`Ž®,ÅŠi”[,³,ê,Ä,ç,Ü,·□B  
,f,u,Å,Í,a,l,oCE`Ž®,Æ,μ,Ä“Ç,Ý□ž,ň,Å%oº,³,çŽ©“®Ž`•Ê,³,ê,Ü,·□B  
frfWf...fAf<,a,`,r,h,b,ì LoadPicture f□f□bfh,Å“Ç,Ý□ž,p,±,Æ,à□o—^,Ü,·□B



## ,v,l,eĀ`Ž®

,v,h,m,c,n,v,r,f^ftf@fCf<Ā`Ž®,Å,·B,v,h,m,c,n,v,r,l·W€fxNf^Ā`Ž®,Å,  
·B,l,r|,v,n,q,c·t'®,l,l,r|,c,q,`,v,l|u·"·i"Ç,Ýž,Ýv,Å"Ç,Ýž,p,±,Æ,ªo—  
^,Ü,·B'A,μ,c,q,`,v,Å"Ç,Ýž,pê#|c|',«ftfHf"fg,Í³,μ,"Ç,Ýž,β,È,ϕ,æ,κ  
,Å,·B,c,q,`,v,Å"Ç,Ýž,ñ,¾Āă,ÍXfifbfvfVf#fbfg,É,æ,é,a,l,o,Ö,ì·İŠ,ðs,Á,Ä,a,l,  
oĀ`Ž®,É,μ,Ü,·B^êŽžŠúfAf<f\_fXŽĐ,İŠg'£,É,æ,é·ûĀ¾,à, ,è,Ü,μ,½,ª,v,h,m,c,  
n,v,r,RD,P,Å,Í,»,ê,à³Ž®,ÈĀ`Ž®,Æ,μ,Ä"F,β,ç,ê,½—l,Å,·B

## [.X,Wfxf^Ā`Ž®](#)

,o,b|,X,W,O,P|i,»,)ĀÝŠ·<@,đŠÜ,P|j,lfof  
%oftfBfbfN,u,q,` ,l,l|f,fšfCf|fW,đ,»,)Ü,Üftf@fCf<,É,μ,½,à,ì,Å,·|B,SfvfĀ[f“  
|i,q|A,f|A,a|A,x|j,ª•Ēftf@fCf<,É,È,Á,Ä,č,é,Ā,«,í|A,m,W,W|  
,a,` ,r,h,b,ì,a,k,n,` ,c-½—β,Å“Ç,Ýž,þ,±,Ā,ª|o—  
^,Ü,·|B,v,h,m,c,n,v,r,ì,c,n,r|v|f“fvfg,©,ç,m,W,W|,a,` ,r,h,b,đ—š,¿|ã,°,Ä,“,č  
,Ä|A|ã<L•û-@,Å“Ç,Ýž,Ý|A|Xf|f|b|f|v|f|f|b|f|g,É,æ,é,a,l,o,Ö,ì•ĪŠ,đ|s,±  
,Ā,Å|A,a,l,oĀ`Ž®,É,·,é,±,Ā,ª|o—^,Ü,·|B

## .l,q,a Ć`Ž®

.l,q,a(Multi Resolution Bitmap)

f}f<f`‰đ'œ"x'Î‰žfrfbfgf}fbfv,Å,·B"Á'è,ì‰đ'œ"x,đŽ,ÂfffBfXfvfĈfC(—  
á,î,Î VGA ,â 8514 ) ,î^x,ÉŸĈv,³,ê,½frfbfgf}fbfv,đ•i"ĈĀŠÜ,þ,v,h,m,c,n,v,r  
—p,îfrfbfgf}fbfvtf@fCf<,Å,·B—á,î,îfwf<fv<N"®Žž,ífffBfXfvfĈfC,ì‰đ'œ"x,âjff‰[•\Ž!"\—  
Í,đ'²,xĈAfffBfXfvfĈfC,É,à,Á,Æ,à"KØ,Èfrfbfgf}fbfv,đ•\Ž!,μ,Û,·B

## [,r,g,fĀ`Ž®](#)

,v,h,m,c,n,v,r,ì•W□€fnfCfp□[fOf  
%oftfBfbfNfXĀ`Ž®,Å,·□B,v,h,m,c,n,v,r•W□€  
,ì,a,l,oĀ`Ž®,â□A,v,l,eĀ`Ž®,È,Ç,ì  
%œ'œ,ÉfRf“fefLfXfg□î•ñ,Æ,»,ì□À•W,Æ,ð'Ç%oÁ,μ,½,à,ì,Å,·□B—  
á,ì,îfwf<fvftf@fCf<,É,±,ìĀ`Ž®,ð—p,ç  
,ê,î□Afrfbfgf}fbfv“à•”,ì“Á'è,ì“\_ðfNfŠfbfN,·,é,¾,¯,Å,»,ìfgfsfbfN,ÖfWfff“fv,<sup>3</sup>,<sup>1</sup>,é  
,±,Æ,<sup>a</sup>□o—^,é,æ,α,É,È,è,Ü,·□B  
,v,h,m,c,n,v,r□|,r,c,j,R□D,P□AfrfWf...fAf<,b□^,b□{□{□AfrfWf...  
fAf<,a,` ,r,h,b□i,o,q,n□j•t'® ,ìfzfbfgfXf|fbfgfGfffBf^,Å“Ç,Ý□ž,p,±,Æ,<sup>a</sup>□o—  
^,Ü,·□B,»,ìĀ`Ž®,a,l,oĀ`Ž®,Æ,μ,ÄfNfŠfbfvf{□[fh,É“]—□o—^,Ü,·□B

## **,b,f,lĀ`Ž®**

, ` ,m,r,h,Å\$`è,<sup>3</sup>ê,<sup>1/2</sup>xfNf^Ā`Ž®,ì•W€,Å,·B,l,r],v,n,q,c•t'®,ì,l,r]  
,c,q,`,v,ìu•”•i“Ç,Ýž,Ýv,Å“Ç,Ýž,p,±,Æ,<sup>3</sup>o—  
^,Ü,·B'A,μ“Ç,Ýž,β,é,ì,ÍA,`,m,r,h CGM Specification Version 1  
,lfTfufZfbfg,ÉĀ`è,<sup>3</sup>ê,Ä,ϕ  
,Ü,·B,c,q,`,v,Å“Ç,Ýž,ñ,<sup>3/4</sup>Āã,ÍXfifbvfVf#fbfg,É,æ,é,a,l,o,Ö,ì•İŠ,ðs,Á,Ä,a,l,  
oĀ`Ž®,É,μ,Ü,·B

## [,o,b,wCE`Ž®](#)

PC Bitmap,ÆCEÄ,î,ê,éCE`Ž®|B,l,r|,v,h,m,c,n,v,r•t'®,ìufyfCf“fgfuf  
%ofV|v,Å“Ç,Ýž,þ,±,Æ,ºo—^,Û,·BfyfCf“fgfuf  
%ofV,Å“Ç,Ýž,ñ,¾CEã,í,a,l,oCE`Ž®,Å•Û'¶,·,é,±,Æ,ºo—^,Û,·B

## .l,r,oĀ`Ž®

fo[]fWf#f",Q[]D,w^È'O,ì,v,h,m,c,n,v,r,É•t'®,μ,Ä,φ,½,ŠG•`,`«f\ftfg[]ufyfCf"fg[]v,ìĀ`Ž®[]B,l,r[]|,v,h,m,c,n,v,r•t'®,ì[]ufyfCf"fgfuf%ofV[]v,Å"Ç,Ý[]ž,þ,±,Æ,³[]o—^,Û,·[]BfyfCf"fgfuf%ofV,Å"Ç,Ý[]ž,ñ,¾Āã,í,a,l,oĀ`Ž®,Å•Û'¶,·,é,±,Æ,³[]o—^,Û,·[]B

## ,o,h,b,sŒ`Ž®

,o,h,b,s□iPicture□j

f}fbfLf“fgfbfVf...,i•W□€fOf  
%oftfBfbfNŒ`Ž®,ÅxfNf^Œ`Ž®,Å,·□B(Macintosh PICT Œ`Ž®)  
,v,l,eŒ`Ž®,Ö,i•İŠ,ª□l,l,ç,ê,Ü,·,ª□,“x,Èfvf□fOf%of€,ð□i□¬,·,é•K—v,ª, ,è,Ü,·□B



## ,d,o,rE`Ž®

,d,o,r,e iEncapsulated PostScript Format j

Adobe SystemsŽĐ,ÁŠJ",³,ê,½E`Ž®,Á,·B,·iŽž,ìo—  
Í,ª³⁄₄,ç,ê,é,ª<Lq,µ,½"à—e,ª'.,,ÈE±"\_,ª, ,è,Ü,·B,Ü,½APostscript ,ìff[f^,Í  
Mac ,Æ,» ,ê^ÈŠO,Æ,ç,ª<æ•Ê,ª, ,è,Ü,·B  
f|fXfgfXfNfŠfvfg'î%ž,ìfvfŠf"f^,Á^óŽš,³,¹,é,±,Æ,Ío—  
^,Ü,·B,a,l,oE`Ž®,Ö,ì•İŠ,Í,l,r|,c,q,`,v,Á"Ç,Ýž,ª,±,Æ,Á%Å"\,Á,·B

## ,u,RĀ`Ž®

fAfXfL[†Š,ì,b,`,m,c,xfvfš[fY,ÅŠO•"fAfvfšfP[fVf†f",ì^x,ÉfTf|[fg,μ,Ä,†  
,éxfNf^Ā`Ž®,Å,·B,m,W,W|,a,`,r,h,b,ÅŠÈ'P,Èfvf[fOf%of€,đì¬,·,é,±,Æ,Å  
%œ-Ê,É·\Ž!o-^,Û,·B,v,h,m,c,n,v,r,ì,c,n,r,fv[f"fvfg,©,ç,m,W,W|  
,a,`,r,h,b,đ-š,ž,ã,°,Ä,"†,ÄAã<L•û-  
@,Å"Ç,Ýž,ÝAfXfifbfvf†bfbg,É,æ,é,a,l,o,Ö,ì•İŠ,đs,±,±  
,Æ,ÅA,a,l,oĀ`Ž®,É,·,é,±,Æ,ªo-^,Û,·B

,c,w,eĀ`Ž®

,c,w,e□iData Exchange Format□j

‘â’Ē□π%öi‡Š,ì,`,•,”,□,b,`,cfVfŠ□[fY,ÅŠO•”fAfvfŠfP□[fVf‡f“,ì^×,ÉfTf|  
□[fg,μ,Ä,ç,éxfNf^Ā`Ž®,Å,·□B,©,È,è•;ŽG,È^×□A,a,l,oĀ`Ž®,Ö,ì•İŠ,Í□  
ç“i,Å,·□B

## ,c,q,gĀ`Ž®

fWfffXfgfVfXfef€‡Š,ì%oÔŽq,ÅfTf|[]fg,μ,Ä,ϕ  
,éxfNf^Ā`Ž®,Å,·[]B,v,h,m,c,n,v,r,ì,c,n,r,fv[]f“fvfg,©,ç%oÔŽq,đ—  
š,¿[]ã,°,Ä,¨,ϕ,Ä[]AfXfifbfvfVf‡fbfg,É,æ,é,a,l,o,Ö,ì•iŠ:,đ[]s,±  
,Æ,Å[]A,a,l,oĀ`Ž®,É,·,é,±,Æ,ª[]o—^,Ü,·[]B

## ,c,q,vĚ`Ž®

f}fCfNf[]fOf%oftfBfbfNfX†Š,ìffUfCfi,ÅfTf|[]fg,μ,Ä,φ  
,éxfNf^Ě`Ž®,Å,·[]BffUfCfi,đ—š,¿[]ă,°,Äftf@fCf<,đ“Ç,Ý[]ž,ÝfNfŠfbfvf{[]fhĚo  
—R,Å[]A,a,l,oĚ`Ž®,É,·,é,±,Æ,ª[]o—^,Ü,·[]B

## .g,o|,f,kĚ`Ž®

fqf...|[fĚfbfgfpfbfj|[fhŽĐ,ĀŠ]” ,<sup>3</sup>,ê,½fvf|fbf^,ì^x,ìxfNf^Ě`Ž®|B,â,â-Ê“|  
,Ā,·,ª,m,W,W|,a,`,r,h,b,Āfvf|fOf%of€ ,đì|¬,·,é,±,Æ,Ā%æ-Ê,É•\Ž!|o—  
^,Û,·|B,v,h,m,c,n,v,r,ì,c,n,r|fvf|f“fvfg,©,ç,m,W,W|,a,`,r,h,b,đ—š,ž|ã,°,Ā,“,ç  
,Ā|A|ã<L•û-@,Ā“Ç,Ý|ž,Ý|A|X|f|b|f|v|f|f|b|f|g,É,æ,é,a,l,o,Ö,ì•İŠ,đ|s,±  
,Æ,Ā|A,a,l,oĚ`Ž®,É,·,é,±,Æ,ª|o—^,Û,·|B,Û,½fffUfCfi“™,|f\  
ftfg,Ā,í¼|Ú“Ç,Ý|ž,þ,±,Æ,ª|o—^,Û,·|B|u,g,o|,f,k|€<|v,Æ|’,ç,Ā, ,Á,Ā,à,©,È  
,è,ì•ûĚ¾,ª‘¶|Ý,·,é,ì,ª“i“\_ ,Ā,·|B|fvf|fbf^,ì^x,ìĚ`Ž®,Æ,μ,Ā,í|A¼,É,f,o|  
.f,kĚ`Ž®|A,q,c|,f,kĚ`Ž®|A|f|€|f|g|f|E|š|Ě`Ž®“™,ª, ,è,Û,·|B

## [,f,o|,f,kĚ`Ž®](#)

fOf%oftfefbfNŽĐ□i<Ě-¼□F“n•Ó‘Ši‡Š□j,ÅŠj”-  
,³,é,½fvf□fbf^,ì^x,ìfxfNf^Ě`Ž®□B,â,â-Ê“|,Å,·,ª,m,W,W□|,a,`,r,h,b,Åfvf□fOf  
%of€,đ□i□¬,·,é,±,Æ,Å%œ-Ê,É•Ž!□o—  
^,Ü,·□B,v,h,m,c,n,v,r,ì,c,n,r,fvfvf“fvfg,©,ç,m,W,W□|,a,`,r,h,b,đ—š,¿□ã,°,Ä,“,¢  
,Ä□A□ã<L•û-@,Å“Ç,Ý□ž,Ý□AfXfifbfvfvf#fbfg,É,æ,é,a,l,o,Ö,ì•İŠ·,đ□s,π,±  
,Æ,Å□A,a,l,oĚ`Ž®,É,·,é,±,Æ,ª□o—^,Ü,·□B

## .q,c|,f,kE`Ž®

f|[f%of“fh,c,f+Š,ÅŠJ”,³,ê,½fvf|fbf^,ì^×,ìxfNf^CE`Ž®|B,â,â-Ê“|  
,Å,·,ª,m,W,W|,a,`,r,h,b,Åfvf|fOf%of€,ðì|¬,·,é,±,Æ,Å%oæ-Ê,É•\Ž!|o—  
^,Ü,·|B,v,h,m,c,n,v,r,ì,c,n,r|vf|f“fvfg,©,ç,m,W,W|,a,`,r,h,b,ð—š,¿|ã,°,Ä,“,ç  
,Ä|A|ã<L•û-@,Å“Ç,Ý|ž,Ý|AfXfifb|fvfVf±fbfg,É,æ,é,a,l,o,Ö,ì•İŠ,ð|s,±  
,Æ,Å|A,a,l,oCE`Ž®,É,·,é,±,Æ,ª|o—^,Ü,·|B



## fxNf^Ď`Ž® (fXfgf[] [fNĎ`Ž®)

%æ'œ,đü,â%~ĎĎ,ì'g,Ý#,í,<sup>1</sup>,Æ,μ,Ä•\Ď»;,é•û-@,ì'[]ì[]Bf  
%fXf^Ď`Ž®,ÉŠr,x,Äf[]f,fŠ,ì'Á"i,â[],È,ç[]A[]L[]k,âŽ©—  
RŽ©[]Ý"™,ì'[]Š,đŽ[],Â,â[]A•`  
%æ,â'x,ç"i"\_,đŽ[],ž,Ü,·[]BfXfgf[] [fNĎ`Ž®[]Afhf[] [Ď`Ž®[]A"™,Æ,àĎÄ,î,ê,é  
[]B,b,`,c,âfOf%oft,ì•\Ď»,ÉĎü,ç,Ä,ç  
,Ü,·[]B,f,u,ífxfNf^Ď`Ž®,đ^μ,xfhf[] [Ďn,ìf\ftfg,Å,í, ,è,Ü,<sup>1</sup>,ň[]B

## f%ofXf^Ĉ`Ž®(fsfNf`ff[Ĉ`Ž®)

%œ'œ,đ" \_ìW,Ü,è,Æ,μ,Ä•\Ĉ» , ,é•û-  
@,ì' \_ìBfxfNf^Ĉ`Ž®,ÉŠr,x,Ä'€ì,², '¬A•;ŽG,È%œ'œ,đ^μ,|,éA,ÆĈ³/4,κ  
—~" \_², ,é,²Af[]f,fš,đ'â—Ê,ÉÁ"i, ,éAfffofCfX^Ě'¶«,đ%ñ"đo—  
^,È,ç"™,ì"i" \_², ,è,Ü,·Bfrfbfgf}fbfvĈ`Ž®Afycf"fgĈ`Ž®AfsfNf`ff[Ĉ`Ž  
®"™,Æ,àĈÄ,î,ê,Ü,·BŽÊ^AfCf%ofXfg"™,ì•\Ĉ» ,ÉĈü,ç,Ä,ç,Ü,·B,f,u,ÍŠî-  
{ "l,Éf%ofXf^Ĉ`Ž®,đ^μ,κfyfCf"fgĈn,lf\ftfg,Å,·B

## **fXfifbfvfVf#fbfg,É,æ,é,a,l,o,Ö,ì•İŠ.**

fXfifbfvfVf#fbfg,Æ,í•\Ž!,<sup>3</sup>,ê,Ä,ç,é%œ-  
Ê,ð,a,l,oĚ`Ž®,Æ,μ,ÄfNfŠfbvf{[fh,Ö"]'—,·,é,±,Æ,Å, ,é□B,v,h,m,c,n,v,r,R□D  
,O,æ,è'O,Å,í□A,r,c,j•t'® ,ìfXfifbfvfVf#fbfg,ÆĚ<sup>3/4</sup>,xfAfvfŠfP□[fVf#f" ,<sup>a</sup>•K—  
v,<sup>3/4</sup>,Á,<sup>1/2</sup>,<sup>a</sup>□A,v,h,m,c,n,v,r,R□D,O^È~ ,Å,ífVfXfef€ ,Å,ìftfj□[fg,Æ,È,Á,<sup>1/2</sup>□B  
%œ-Ê,ð-Ú"l,ìó'Ô,É,μ□A,b,n,o,xfL□[ ,ð%ÿ,·,Æ%œ-  
Ê,<sup>a</sup>fNfŠfbvf{[fh,ÉfRfs□[ ,<sup>3</sup>,ê,é□B, ,Æ,í,v,h,m,c,n,v,r•t'® ,ìfyfCf"fgfuf  
%ofV,É□u•Ò□W□{"\,è•t,~□v,·,ê,î—ç,ç□B,±,ì,Æ,«—\,ß□u•\  
Ž!□{□k□-□v,ð,μ,Ä," ,©,È,ç,Æ%œ-Ê'S'ì,<sup>a</sup>"\,è•t,~□o—^ ,È,ç,ì,Å'□^Ó,·,é□B-  
Ô,©, ,ìó'Ô,É,È,Á,<sup>1/2</sup>,ç,à,π^ê"x□u•Ò□W□{"\,è•t,~□v,ð,·,é□B, ,Æ,ìftf@fCf<,Æ,μ  
,Ä•Ù'¶,·,é,È,è,È,ñ,È,è,Æ□B  
,c,n,r,vf□f"fvfg"à,Å,ìfXfifbfvfVf#fbfg,í□A,o,h,eftf@fCf<,©,ç,ì<N"® ,<sup>a</sup>•K—  
v,É,È,é□B,v,h,m,c,n,v,r•t'® ,ì,o,h,efGfffBf^ ,Å□Ú□×□Ý'è,ì%œ-Ê•\  
Ž!,ðfefLfXfg,© ,çfOf%oftfBfbfNfX,É□Ý'è,μ,Ä," ,□B•W□€  
,ì,c,n,r,vf□f"fvfg,© ,ç,Å,ífOf%oftfBfbfNfX%œ-Ê,Å,í,È,-  
□AfefLfXfg,<sup>a</sup>fNfŠfbvf{[fh,É"]'—,<sup>3</sup>,ê,Ä,μ,Ü,π,ì,ÅfjXf^f}fCfY,<sup>a</sup>•K—v,<sup>3/4</sup>□B,±  
,ì•û-@,Å-w,ç,ì%œ'œ,ð,a,l,oĚ`Ž®,É•İŠ• ,Å,« ,é,<sup>a</sup>□A,±,π,μ,ÄfRfs□[ ,μ,<sup>1/2</sup>  
%œ'œ,ífpfĚfbfg,ì%œ<ç,ð"½%of,μ,Ä,ç,È,ç,ì,Å□A,f,u,ì" "W,<sup>a</sup>-],Ü,è,é,Æ,±  
,è,<sup>3/4</sup>□B

## fyfCf“fgCEn,lf\ftfg

Žå,Éf%oofXf^`Ž®,\ff[]f^,đ^μ,xf\ftfg[]B,v,h,m,c,n,v,r•t'®,\fyfCf“fgfuf  
%oofV,ª,»,\i'ă•\Ši[]B,f,u,à,±,ê,É'®,·,é[]BfAfcfRf“fGfffBf^,âfcf[][]fWfGfffBf^,ª, ,  
é[]B

## [fhf \[CEn,lf\]ftfg](#)

Žå,ÉfxNf^Ĉ`Ž®,ìff[f^,ð^μ,xf\ftfg[B,l,r],v,n,q,c•t'®,ì,l,r]  
,c,q,`,v,ðŽn,β[Af}fCfNf]fOf  
%oftfBfbfNfXŠ,ìfffUfCfi[A"üŠ;fA[f]g[AfC[fXfgŠ,ìfAfbfVf...fhf[A"ā"]  
,v,h,m,b,`,c[A'á'Ě]x%oi,ì,`,•,"[,b,`,c"™,ª, ,é[B,c,n,r"Å,Å,í[AfAfXfL[,ì,b,`,  
m,c,x,âf\_fCfifEjFfAŠ,ìf\_fCfi,b,`,c"™,ª—L-¼[B

## ŠÖ~A—pĀÊ

fhf%ofbfO□•fh□fbfv  
fNfŠfbfvf{□[fhftfH□[f}fbfg  
fvf%ofCfx□[fgftfH□[f}fbfg  
fffBfĀfCfhfĀf“f\_Šf“fO  
fffBfU  
fy□[fWff□[  
fAfXfyfNfg”ä  
fpfĀfbfg□î•ñ  
fpfĀfbfg<@”\  
fmf“fvfŠfGf“fvfefBfu  
□%oŠú%o»ftf@fCf<  
f\_fCfif~fbfNff□[f^fGfNfXf`fFf“fW(,c,c,d)

## fy[]fWff[]

%oæ'œftf@fCf<,Æ“~,¶ffBfCEfNfgfŠ,É□A“~,¶ftf@fCf<-¼,ÅŠg'£Žq,ª DOC ,©  
Q4D,ìftf@fCf<,ª¶Y,·,é,Æ,«,ÍŽw'è,μ,½fy[]fWff[],ÅfhfLf...f[]“fgftf@fCf<,ð·\  
Ž!,μ,Ü,·□Bfy[]fWff[],ìffftfHf<fg,Í notepad.exe  
,Å,·□B,Ü,½□A·i”%oæ'œff[]f^,ì~ACE<<@“\,ðŽg—  
p,μ,½,Æ,«,í□A,Q,Â,ìff[]f^ftf@fCf<-¼,ì<æ'Ê,ì·”·ª,ðftf@fCf<-  
¼,Æ,μ,ÄŽ□,Á,½fhfLf...f[]“fgftf@fCf<,ð·\Ž!,·,é,±,Æ,ª□o—  
^,Ü,·□B,Ü,½□Afy[]fWff[],í·\Ž!%oæ'œ,ª·ï,í,Á,½Žž□A,f,u,ì□I—  
¹Žž,Éž©“®“l,É□I—¹,μ,Ü,·□B

## [fhf%ofbfO□•fhf□fbfv](#)

Windows3.0,Æ3.1,É'í%ž,μ,Ä,ϕ  
,Ü,·□Bftf@fCf<f}f□□fWff,È,Ç,©,çftf@fCf<,ðfhf  
%ofbfO,μ□A,f,u,É□ifAfCfRf"□ó'Ô,Å,à%oÂ□jfhf□fbfv,μ,Ü,·,Æ□A,»,ìff□f^,ð•\  
Ž!,μ,Ü,·□B

•i□"ftf@fCf<,ìfhf%ofbfO□•fhf□fbfv,ì□ê□#□AZè"®~A'±•\  
Ž!,",æ,ÑŽ©"®~A'±•\Ž!,<sup>a</sup>%oÂ"\  
,Å,·□BŽè"®É,·,é,©Ž©"®É,·,é,©,íμß¼®Ý□^•\Ž!ff□f^,É,Ä□s,ϕ  
,Ü,·□BŽè"®~A'±•\Ž!,ì□ê□#□A,Ü,,D,Æ,Â,ìff□f^,ì,Ý,ð•\Ž!,μ□A'¼,ìftf@fCf<,í•\  
Ž!fŠfXfg,É"o~^,³,ê,Ü,·□Bf}fEfX,ì□¶f{f^f",ð%oÿ,·,Æ^È%o<sup>o</sup>,ìf□ff...□[,<sup>a</sup>•\  
Ž!,³,ê,Ü,·□B

Next Data:Žÿ,ìff□f^•\Ž!  
Previous Data:'O,ìff□f^,ì•\Ž!  
DATA List...:ff□f^,ìfŠfXfg•\Ž!

,Ü,½□A□¶f{f^f",ð%oæ'œ,<sup>a</sup>•\Ž!,³,ê,Ä,ϕ  
,éfEfBf"fhfE,Åf\_fuf<fNfŠfbfN,·,é,Æ□AZÿ,ìff□f^,<sup>a</sup>•\Ž!□iNext  
DATA□j,³,ê,Ü,·□B,±,ì<@"\,ìŽÀ□Ú,ì—~—p•û-  
@,Æ,μ,Ä,í□A•i□"ftf@fCf<,ð,f,u,Éfhf□fbfvÆã□A□¶f}fEfXf{f^f",ìf\_fuf<fNfŠfbfN,  
É,æ,Á,Ä□#Žÿ%oæ'œ,ð•\Ž!,³,¹,é,Æ,ϕ,Á,½,à,ì,É,È,è,Ü,·□B

Ž©"®~A'±•\Ž!,ì□ê□#,í□AZw'èŽžŠÔŠÔŠu,Å,"±,È,ì,Ü,·□B,±  
,é,ç,ì□Ý'è,ìfìfvfVf†f",ìData Info...,Å,Å,«,Ü,·□B



## fNfŠfbfvf{[fhftfH[f}fbfg

fNfŠfbfvf{[fhftfH[f}fbfg,ìĚ`Ž®,í,c,h,aĚ`Ž®A,a,l,oĚ`Ž®<y,ŇfpfĚfbfg  
[í•ň,Å,·Bfvf  
%ofCfx[fgftfH[f}fbfg,íŽg,!,Ü,<sup>1</sup>ňB,Ü,<sup>1/2</sup>fffBfĚfCfhfĚf“f\_fŠf“fO,àfTf|  
[fg,μ,Ä,č,Ü,<sup>1</sup>ň,ì,ÅAf[f,fŠ,ì,È,č•ú,í,<sup>2</sup>^Ó%º,<sup>3</sup>,čB

,f,u,Å,ífNfŠfbfvf{[fh,Ö,lfRfs[[^fy[fXfg,íA,c,h,aĚ`Ž®,Å[s,í,ê,Ü,·BMS-  
Windows,É•W[€,lfyfC“fgfuf%ofV,Å,ífy[fXfg[o—^,Ü,<sup>1</sup>ňB

## **fvf%ofCfx[]fgftfH[]f}fbfg**

,f,u,Å,ÍfTf|[]fg,μ,Ä,ç,Ü,<sup>1</sup>,ñ[]B  
fNfŠfbfvf{[]fh,É,Í[]AfAvfŠfP[]fVf#f“CEÅ—L,ìCE`Ž® ,đ“o~^ ,; ,é<@“\,ª , ,è[]A,» ,  
ìCE`Ž® ,đfvf%ofCfx[]fgftfH[]f}fbfg,ÆCE¾,ç,Ü,·[]B,±,ê,ªfTf|[]fg,<sup>3</sup>,é,é,Æ  
%o½,ªŠđ,μ,ç,©,Å,·,ª[]ACE»[]Ý,ì,f,u,đ,Q,Â<N“® ,μ,Ä,Ý,Ä  
%oº,<sup>3</sup>,ç[]B•Đ•û,Å,l,` ,fCE`Ž®,ì  
%oæ’œ,đf|[]fvf“ ,μ,Ü,·[]Bf}fvf“ ,đ[]Ý’è ,; ,é,Æ[]F,ª[]³,μ,•\Ž|,<sup>3</sup>,ê,Ü,·,Ë[]B,±  
,ê,đ[]u•jŽÊ[]v,μ,Ä¼,ì,f,u,Ö[]u“\,è•t,`[]v,ÄCE©,Ü,μ,â,æ[]B,±  
,ñ,ç,Í[]Af}fvf“ ,đ[]Ý’è,μ,Ä,à[]F,ª•ï,í,è,Ü,<sup>1</sup>,ñ,Å,μ,½,Ë[]H,Â,Ü,è,l,` ,fCE`Ž®,Í“]’—  
,<sup>3</sup>,é,È,©,Á,½,ì,Å,·[]B,à,Æ,à,Æ,v,%o,Ž,,,,[],—  
,“ ,É,Í,l,` ,fCE`Ž®,Í“FŽ` ,Å,« ,Ü,<sup>1</sup>,ñ,©,ç[]A,±,æ,ç,Á,½,à,ì,đ“]’— ,; ,é,É,Ífvf  
%ofCfx[]fgftfH[]f}fbfg,Æ,μ,Ä“o~^ ,; ,é•K—v,ª , ,é,ì,Å,·[]B  
[]iCEã,l,` ,f[]ê—p,ÌfyfCf“fgfc[]f<,È,ñ,©,ª[]o,½,Æ,«—~ ,μ,ç<@“\  
,Å,·,Ë[]Bfvf[]fof%of€,à’â•ï,Å,·,©,ç[]A<C’·,É’Ò,ç,Ü,μ,â,æ[]B

[ffBfU](#)

À,ç,ê,½,F",Å'tŠÔF,ð•\CE»,·,é,½,ß,ìŽè-@,ì,Ð,Æ,ÂB,½,Æ,!,îfsf"fN,ð•\CE»,·,é,ì,Éf}f[f"f^,Æ"" ,ì`fFfX-Í-I,ðì,Á,Ä•\CE»,μ,Ü,·B

## fpfCEfbfgî•ñ

fpfCEfbfgî•ñ,Æ,íA,Ç,ìF,<sup>a</sup>Ç,ìF,Éf}fbfv,<sup>3</sup>ê,Ä,ç  
,é,©,ďŽ!,·,à,ì,ÅAfpfCEfbfgf}fI[fWff,É,æ,Á,Ä—~—  
p,<sup>3</sup>ê,é,à,ì,Å,·BfAfvfŠfP[fVf†f“,í,»,ê,¼,ê•ÊÊÂ,É~\_—  
fpfCEfbfg,đì¬A•ÛŽ,μA•;ŽÊ,μ,½,è“\,è•t,¬,½,è,·,é,±,Æ,<sup>a</sup>Å,«,Ü,·B  
,¬,ê,Ç'Êí,ì,X,W,Å,ÍTf[f<sup>3</sup>g,ê,Ä,ç,È,ç,ì,ÅAŽ,,,É,í-<sup>3</sup>%o,ì<@“\  
,Å,·B,¿,á,ñ,Æf}fjf...fAf<,É',ç  
,Æ,¬Ii, m,d,bj,X,W,ìfn[fhfEfFfA,É,æ,éfpfCEfbfg<@“\,Æ,í•Ê,ì^Ó-  
j,Å,·,ì,ÅA¬—,μ,È,ç,æ,α,É,μ,Ä%o<sup>o</sup>,<sup>3</sup>,çB

## [fpfCEfbfg<@”\](#)

•\Ž|‰Ŧ”\,È□F□” ,æ,èŽÀŦ»‰Ŧ”\,È□F□” ,ª□,È,ç  
,Æ,«□A,» ,ì’I,Ñ•û,ð□Ý’è,·,é<@□\,ðfpfCEfbfg<@”\,ÆŦÄ,Ñ,Û,·□B,v,‰,Ž,,□,—  
 ,“ ,Ŧ,Í,R□D,O,©,çfTf|□[fg,³,ê,Û,μ,½,ª□Afm□[f}f<,X,W,Ŧ,ÍfTf|  
□[fg,³,ê,Û,¹,ñ,Ŧ,μ,½□B  
 ,©,½,â,â,X,W,É,Í□ì,©,çfpfCEfbfg<@”\,ðfTf|□[fg,·,éfn□[fhfEfffA,ª”ð,¡,Ä, ,è□A  
ŠŽí,ìfAfvfŠfP□[fvf#f” ,ª,±,ê,ð—~—p,μ,Ä,¨,è,Û,μ,½□B,Æ,±  
,ë,ª□ã□q,ì□ó<μ,©,ç,v,‰,Ž,,□,—,“fAfvfŠ,Í,±,ê,ð—~—p,Ŧ,« ,È,-  
,È,Á,Ä,μ,Û,Á,½,ì,Ŧ,·□B  
 ,v,‰,Ž,,□,—,“ ,É,Í<@Ží^È’¶□« ,ð  
‰Ŧñ”ð,·,é^×□A’¼□Úfn□[fh,ÉfAfNfZfX,μ,Ä,Í,È,ç,È,ç,ÆŦ¾,æ“S,ì□,ª ,è,Û,·□B,f,  
u,Í, ,¡,Ä,±,ê,ð”j,è,Û,μ,½□B,f,u,Í, ,é^Ó-¡,Ŧ,Æ,Ä,à□s<V,ì^« ,çf\ftfg,Ŧ,·,ª□A,» ,ìŽÀ  
—p“l,È‰ž’l,Í,Í•Í,« ,È^Ó< ,ì, ,é,à,ì,¾,ÆŽv,ç,Û,·□B□i,æ,ç,μ,â□A,æ,ç  
,μ,â□B□O□O□G□j

## fffBfCefCfhfCef“f\_fŠf“fo

,f,u,Å,ÍfTf|□[fg,μ,Ä,ç,Ü,<sup>1</sup>,ñ□B  
frfbfgf}fbfv,ì,æ,æ,È‘å,«,Èff□[f^,Íf□f,fŠ,ðŽg,æ,ì,Å□AŽg,ç,à,μ,È,ç  
,ì,ÉfNfŠfbfvf{□[fh,É“ü,ê,Ä,“,„ÆfvfXfef€,ì, ,μ,©,<sup>1</sup>,É,È,Á,Ä,μ,Ü,ç,Ü,·□B,»,±  
,Å□AfNfŠfbfvf{□[fh,É,Í□AffBfCefCfhfCef“f\_fŠf“fo,ÆCE<sup>3</sup>/<sub>4</sub>,æ@“\,<sup>a</sup>, ,è,Ü,·□B  
fNfŠfbfvf{□[fh,É,Í“]’—□€”ö,<sup>a</sup>□® ,Á,½,±,Æ,<sup>3</sup>/<sub>4</sub>,~“` ,|,Ü,·□B<â□s□U□ž,ì<—^—  
<sup>3</sup>/<sub>4</sub>□×,Ý,½,ç,È,à,ñ,Å,·,È□B,»,μ,Ä<sup>1</sup>/<sub>4</sub>,ìfAfvfŠfP□[fvf#f“ ,<sup>a</sup>,Ü,<sup>3</sup>,É“\,è•t,~ ,æ,æ  
,Æ,μ,½,Æ,«,É□%o,β,ÄŽÀ□Û,ìff□[f^,ð“]’—,·,é,ì,Å,·□B,ç  
,í,ä,é□uCE»<à,ì^ø,«□o,μ□v,Å,·,È□B  
f□f,fŠ,ì□,È,çŽ,,,Æ,μ,Ä,Í□A,Æ,Ñ,½,<sup>3</sup>,ñ,ìŠ^—ô,ÉŠú‘Ò,μ,½,ç,Æ,±  
,ë,Å,·,<sup>a</sup>□Afvf□fOf%of€,·,é,ì,à‘å•ĩ,Å,·,©,ç□A<C’·,É‘Ò,ç,Ü,μ,å,æ□B

## fAfXfyfNfg"ä

%æ-Ê,Æ□c,Æ%oj,ì"ä,ì,±,Æ□B—á,!,î•□'Ê,ì%Æ'ë—p,s,u,Å,Í,S□F,R,Å, ,è□Af  
nfCfrfWf†f“,Å,Í,P,U□F,X,Æ,È,è,Ü,·□BfAfXfyfNfg"ä,ì^á,æfffBfXfvfÆfC,Åfrfbfgf}f  
bfv,đ^μ,α,Æ,«,Í□Afrfbfgf}fbfvŽ©'ì,É□L□k,·,é“™,ì•ï□X,đŽ{,³,È,-  
,Ä,Í,È,ç,È,è,Ü,<sup>1</sup>,ñ□B,Å,à,»,α,·,é,ÆŠG,afMfUfMfU,É,È,Á,Ä,μ,Ü,α  
,ñ,Å,·,È□AŽc"O,È,±,Æ,É□B

## fmf“fvfŠfGf“fvfefBfu

f}f<f`f^fXfN,É,¨,¯,éŽÀ□sCE`´Ô,ì,Đ,Æ,Â□BŠefAfvfŠfP□[fvf†f“ ,ª□\$CEä,ð-  
β,μ,Ä,,ê,é,Û,Å,v,%o,Ž,,,□,—,“ ,ª□\$CEä,ðŽæ,è-β,<sup>1</sup>,È,ç  
,½,β□A´,çŠÔ,b,o,t,ð“Æ□è,·,éfAfvfŠ,ª, ,é,Æ□A<sup>¼</sup>,lfAfvfŠ,ª“ ®,©,È,,È,è,Û,·□B  
fGf“fnf“fXf,□[fh,ì,c,n,r{fbfNfX,ÉŠÖ,μ,Ä,lfvfŠfGf“fvfefBfu,ÈCE`´Ô,ÅŽÀ□s,ª□s  
,í,ê,é^×□A,» ,κ,ç,Á,½□S”z,í, ,è,Û,<sup>1</sup>,ñ□B  
fmf“fvfŠfGf“fvfefBfu,ð□l—¶,μ,½ŠÂ«« ,É—D,μ,çfvf□fOf%of€ ,ª—  
□‘z,Å,·,ª□AŽÀ□Û,É,í,¨,μ,Á,±,ð“r†,Å%o½“x,àŽ~,β,é,æ,κ,Èfvf□fOf%of€  
,ð,μ,È,¯,ê,î,È,ç,È,ç^×□A,È,©,È,©‘å•ï,È,ñ,Å,·,æ,È,¡□B



## [%Šú%»ftf@fCf<](#)

,v,%Ž,,□,—,“,Å,í□A□Y'è,<sup>3</sup>,ê,½□î•ñ,đŽŸ%ñ,ì<N“®Žž,É—~—  
p,·,é^×□AŠg'£Žq,<sup>a</sup>\*.ini,ì□%Šú%»ftf@fCf<,đfTf|□[fg,μ,Ü,·□B'Ê□í,±  
,ê,íAfvfŠfP□[fvf#f“,ì<N“®Žž,É“Ç,Y□ž,Y□A□I—  
<sup>1</sup>Žž,É□X□V,·,é,à,ì,Å,·,ª□A,f,u,Å,íRf}}f“fh,Æ,μ,Ä□€”ö,<sup>3</sup>,ê,Ä,ç,Ü,·□B

.f,u,ì□%Šú%»ftf@fCf<,P

## f\_fCfif~fbfNff□[f^fGfNfXf`fFf“fW(,c,c,d)

f\_fCfif~fbfNff□[f^fGfNfXf`fFf“fW(,c,c,d)  
,Æ,Í□Aff□[f^,đ“@“l,ÉĎĎŠ·,·,é,½,β,ì,v,h,m,c,n,v,r,ì□fjffYf€,Å,·□B,±  
,ê,É,æ,Á,ÄfAfvfŠfP□[fVf#f““~Žm,afŠfAf<f^fCf€,Åff□[f^,đĎĎŠ·,μ,½,è,·,é,±,Æ,ª  
%oÂ“\,Å,·□B  
,c,c,d,É,Í—,é‘α(fNf%ofCfAf“fg,Ü,½,ífffBfXfefBfI□[fVf#f“),ÆŽó,·,é‘α  
(fT□[fo□[Ü,½,í□[fX),ª‘¶□Ý,μ,Ü,·□BĎ»□Ý,ì,f,u,íT□[fo□[,Æ,μ,Ä,ì<@“\,đfTf|  
□[fg,μ,Ü,·□B,Â,Ü,è¼,ìvf□fOf%of€,ì—v<□,É,æ,Á,Äftf@fCf<,đf□□[fh,μ,Ä·\  
Ž|,·,é,±,Æ,ª□o—^,é-ó,Å,·□B  
,à,μ’Ê□Mf\ftfg,ª,c,c,dNf%ofCfAf“fg,ì<@“\,đ”õ,|,Ä,ç,Ä,f,u—  
p,ÉfjXf^f}fCfY□o—^,é,È,ç□A’Ê□Mf\ftfg,ÅŽó□M,μ,½ff□[f^,đ,½,¾,¿,É,f,u,É·\  
Ž|,·,é,±,Æ,ª%oÂ“\,Å,·□B

,c,c,dŽd—l

## [,f,u,ì□%Šú%»ftf@fCf<,P](#)

,f,u,Å,í^È%Šú%,ì,æ,æ,Éf|fvfVf†f“ ,đŽw'è,·,é,±,Æ,ª□o—^,Ü,·□B

Machine={ PC98 | PC98N | PC98E.1 | PC98E.A | GA1024i | VGA |  
Others }

Pager=<fy□[fWff,É—~—p,·,éfRf}f“fh-¼>

Format={ mag | mki | q4 | jpg | gif | pic | xbm | x | bmp | ALL }

Dithering={ ON | OFF }

Quantize={ ON | OFF }

QuantizePass={ 1Pass | 2Pass }

Color={ 16 | 256 }

CPU={ 286 | 386 }

AspectRatio=<50□`250,ì"í^í,ìfAfXfyfNfg"ä>

AutoAspect={ ON | OFF }

ZoomRate=<10□`999,ì"í^í,ìfY□[f€—|>

FixPalette={ ON | OFF }

□u,[,f,u,ì□%Šú%»ftf@fCf<,Q□v,Ö'±,...](#)

## .f,u,ì%Šú%»ftf@fCf<,Q

UpdateColor={ ON | OFF }  
Language={ Japanese | English }  
GaSwitch=<0 F,ì"í^í,ìGA1024i,ìŠ,,èž,Ý"Ô†>  
WorkDirectory=<,f,u<N"®Žž,ìff[f^"Ç,Ýž,ÝfffBfÆfNfgfŠ-¼>  
PushESCExit={ ON | OFF }  
UseBMP={ ON | OFF }  
ViewImage={ ON | OFF }  
AutoLink={ ON | OFF }  
OpenDocument={ ON | OFF }  
AddFileList={ ON | OFF }  
DisplInterval=<0 30•b,ì"í^í,ìŽ©"®•\Ž|ŠÔŠu>  
PhotoCDSize={ Base/16 | Base/4 | Base }  
SaveRLE={ ON | OFF }  
SaveDPI=<ftf@fCf<fZ[fuŽž,ìDPI>  
FileManDrag={ ON | OFF }

u,f,u,ì%Šú%»ftf@fCf<,Pv,Ö-ß,é...

## ,f,ufwf<fv

,±  
,ì,f,ufwf<fv,íìžÒ,Æ,Ñ,½ž□,ì□³”F,đ“¾,Ä□A,x,t,h,o,n□Afpfl,³,ñ□A<y,ÑžRCE``’š  
w,n,a,²□ì□¬,μ,½,à,ì,Å,·□Bžæ,è^μ,ç,É,¨,ç,Ä,í□A,f,u-{'ìvf□fOf%of€,Æ□€  
,¶,½,à,ì,Æ,μ,Ü,·□B□ó<μ^È‘¶fwf<fv<y,Ñ%op•¶fwf<fv,ÍTf|  
□[fg,μ,Ä,¨,è,Ü,¹,ñ□Bfwf<fv,ÉšÖ,·,é^ÓCE©“™,í□A,x,t,h,o,n,²□³,è,Ü,·□Bfwf<fv’t,ì  
CEë,è□A, ,é,ç,í’Ç%oÁ,μ,Ä—~ ,μ,ç□î•ñ□A“™,Ç,μ,Ç,μ,x,t,h,o,n,ì•û,Ü,Å,²^ê•ñ  
%o²,³,ç□B

,x,t,h,o,n



fpfl,³,ñ



žRCE``’šw,n,a



## óμĚ'fwf<fv

,f,u,Ā,ÍfTf|□[fg,μ,Ā,¨,è,Ü,¹,ñ□B  
f□□[fh,âfGfNfZf<,ĀfvftfgfL□[,ð%oÿ,μ,È,ª,ç,t□E,PfL□[,ð%oÿ,μ,Ā,Ý,Ā,-  
,¾,³,ç□Bf}fEfXfj□[f<,ª□u□H□v,ð,¨,ñ,Ô,μ,Ü,μ,½,Ě□H,±,ì□ó'Ô,Āf□ffj...  
□[,ìfRf}f“fh,ð'í,Ô,Æ□A,»,ì<@”\,ðŽÀ□s,·,é,©,í,è,É,»,ì<@”\,ì□à-¾,ª•\  
Ž,³,é,Ü,·□B,±,é,ª□óμĚ'fwf<fv,Ā,·□B  
,±,é,ðŽÀÆ»,·,é,É,Í□Afvf□fOf  
%of}□[,Æfwf<fv□ì□¬ŽÒ,Æ□,“x,È~ACEgfvfCE□[,ª•K—v,Ā,·□BŠF,Ā,x,t,h,o,n,³,ñ,ð  
%ož%o‡,μ,Ü,μ,â,‡□B,ì□AŽ,,□HŽ,,“Í”p,ð,½,«,Ā,¯,Ā,ç,é,¾,¯,Ā,·□B, □A,»,é□A,ª,ñ,î  
,é□A,ª,ñ,î,é□I

,æ,,é,p□•,`

Ž©—R,É“]□Ú,μ,Ä,à—Ç,ç,ì,Å,.,©□H

ŠG,đ%œ,,É,í□H

%œ'œ,ì~A'±•\Ž!,đ,<sup>3,1</sup>,é,É,í□H

'å,«,Èftf@fCf<,đ,<sup>3</sup>•\Ž!,<sup>3</sup>,é,Ü,<sup>1</sup>,ñ,Å,μ,<sup>1/2</sup>□I

,v,h,m,c,n,v,r,ì,ìfI□[fvfjf“fO%œ'œ,<sup>3</sup>•ì□X,Å,«,é□H

%œ'œftf@fCf<,<sup>3</sup>òŽR,<sup>1/2</sup>,Ü,Á,Ä,μ,Ü,Á,<sup>1/2</sup>,ì,Å,.,<sup>3</sup>□D□D□D

,f,u,ì,c,c,d<@“\,đŽg,Á,Ä,Ý,<sup>1/2</sup>,ç,ì,Å,.,<sup>3</sup>□D□D□D

□G,s,....',□,Æ,f,u,đ~A“®,<sup>3,1</sup>,é,É,í□H

,v,h,m,s,d,q,l,Æ,f,u,đ~A“®,<sup>3,1</sup>,é,É,í□H

,f,u,É,í,n,k,d,ì<@“\,í-<sup>3</sup>,ç,ì,Å,.,©□H

## Ž©—R,É“]Ú,μ,Ä,à—Ç,ç,ì,Â,.,©H

,f,u,íftjŠ[f\ftfg,Â,·B],Á,ÄŽ©—R,É“]Ú,μ,Ä\,ç,Ü,<sup>1</sup>,ñ,<sup>a</sup>AŽg—  
pã,ì^Ó“,É<L,<sup>3</sup>,ê,Ä,ç,éđĀ,đ...Žç,μ,Ä'Ö,,±,Æ,đŠó-],μ,Ü,·B





## ŠG,đ%œ,,É,íH

,f,u,íŠz,É“ü,Á,½•xŽmŽR,ìŠG,ìfAfCfRf“,ª•\,μ,Ä,ç,é,æ,π,É□A%œ’œ•\Ž!□ê-  
âf\ftfg,Å,·□B%œ’œ•\Ž!,ì“¹,đ<É,β,é,½,β,É(^^;;□“à,Å—¬’Ê,μ,Ä,ç,é’S,Ä,ì  
%œ’œE`Ž®,É’î%ž,·,é,x,“ú-éŠJ”,É<î,μ,ñ,Å,“,è,Ü,·□B  
□],ç,Ü,μ,Ä□A□½,ÉŽc”O,Å,·,ª□A,“ŠG,©,«,É,í•Ê“r`%œf\ftfg,đ,“Žg,ç  
%œº,³,ç□B(^\_^)V



,f,u,ì□u•Ò□W□{•;ŽÊ□vfRf}f“fh,Å  
%œ’œ,đfNfŠfbfvf{□[fh,É•;ŽÊ,μ□A,v,h,m,c,n,v,r•t’®,ìfyfCf“fgfuf  
%ofV,đ<N“®,μ,Ä“\,è•t,¯,ê,î□A,“ŠG•`,«,à^ó□ü,àŽ©—R,Å,·□BfyfCf“fgfuf  
%ofV,àŽg,ç•û,É,æ,Á,¿,áfofj,É,È,ç,È,ç,æ□l



[%œ'œ,î~A'±•\Ž!,đ,³,¹,é,É,íH](#)

uf|fvfVf#f"v,ìu•\Ž!ff[f^v,É, ,éAAuto Load File,Å~A'±•\  
Ž!,ì'Ò,žŽšŔŔ,đŔ'èĚãAftf@fCf<Ef}f|fWff,©,ç•i"ftf@fCf<,đ'l'đ,μ,ÄAfhf  
%ofbfO,μ,Û,•B'Ò,žŽšŔŔ,đ'•,-  
Ŕ'è,μ,½ê#f,íA,f,uã,Åf\_fuf<fNfšfbfN,đ,•,ê,îAZŔŔ,ì%œ'œ,Éi,Ŕ,Û,•B



,f,u,ì,c,c,d<@"\  
,đŽg,!,îA•É,ÈfAfvfšfP[fVf#f",©,ç,f,u,đfRf"fgf[f<,μ,Ä~A'±•\Ž!,³,¹,é,±,Æ,à  
%oÂ"\,¾,æ|



'á,«,Èftf@fCf<,đ,ª•\Ž!,³,ê,Ü,¹,ñ,Å,μ,½□I

“Ç,Ý□ž,ρ,Æ,«,Éf□fbfZ□[fW,ª□o,Ü,¹,ñ,Å,μ,½,©□Hf□f,fŠ•s'«,ì%oÂ"\□«,ª, ,è,Ü,·  
□Bf□f,fŠ,đ"f,ç'«,: ,©□AfXf□fbfvftf@fCf<,ì□Ý'è,đ'á,«,μ,½Æã,ÉWindows  
,đ□Ä<N“ ®,μ,Ä,,¾,³,ç□B



,¨<à,àfn□[fhfffBfXfN,ì—e—Ê,à-³,ç□I,Í,Ç,α,·,é,ñ,¾,ë,α...  
...,» ,ê,íŽ,,Å,·□BfNfXf“□B



## [,v,h,m,c,n,v,r,ì,ìfì\[\]fvfjf“fO%œ’œ,ª•ïX,Á,«,é\[\]H](#)

,P[]@<N“®%œ-Ê,ÉŽg,¸%œ’œ,ð[]€”ð,·,é[]B, ,Ü,è’â,«,Èftf@fCf<,¾,ÆWin,ª<  
N“® ,µ,È,,È,é,ì,Á[]A,È,é,x,[]¬,³,ß,ì•” ,ð[]B

,Q[]@GV,Á“Ç,Ý[]ž,ñ,Á•Û’¶,·,é[]B,»,ì[]Û,Éftf@fCf<f[]f€  
,í[]uVGALOGO.RLE[]v,Æ,µ[]AWin,ìfvfXfef€[]EfffBfCefNfgfŠ,É•Û’¶,·,é[]B[]i•K—  
v,Á, ,ê,î[]AŽ-‘O,É€³,ìftf@fCf<,ð•Ê-¼,Á•ÛŠÇ,µ,Ä,“,,±  
,Æ[]B[]jGV,ì[]V<K•Û’¶,ìfìfvfVf#f“ ,Á[]uRLE Compress[]v,ð’l,ñ,Á,“ ,[]B

,R[]@Win,ð[]l—¹,µ[]ADOS,©,çWin,ìfffBfCefNfgfŠ,Á[]uSETUP[]v,ðŽÀ[]s,µ[]A  
%œ’œ“x,ì’l’ð,ð,·,é[]B[]i€»[]Ý,ì,Û,Û,ì%œ’œ“x,ÁOK![]jfffBfXfN,ì—v<[],ª—  
^,½,çWin,ìfvfXfef€[]EfffBfCefNfgfŠ,ðŽw’è,µ[]A•ïX,í[]s,í,, ,É[]l—¹,³,¹,é[]B

,S[]@[]Ä<N“® ,·,é,Æ,²Šó-],ìŠG,Á<N“® ,µ,Û,·[]B



[%œ'œftf@fCf<,ə'òŽR,½,Ü,Á,Ä,μ,Û,Á,½,ì,À,.,əD□D□D](#)

,f,u,í•j□"◁N"® ,ə%oÂ"\,Á,·,©,ç□ACE©"ä,x,Ä,Ý,Ä,ç,ç,È,ç  
,à,ì,í"K<X□í□œ,·,é,©□AfffBfÇfNfgfŠ,ðì,é,È,è,μ,ÄŠÇ—□,μ,Ä,-  
,¾,¾,ç□B,f,u,ììŽÒ,Á, ,é□u,Æ,Ñ,½□vŽ□,í□A,±,ê,É,Â,ç,Ä□Á□I•ºŠí,ðŠJ""†,Æ,ç,æ  
%o\,Á,·□B



Ž,,ə□ì,Á,½,w,k,g,` ,È,çftf@fCf<f}f□[fWff,Æ,f,u,ð~A"® ,¾,¾,é,±,Æ,ə%oÂ"\  
,Á,·□B,Á,àŽ,,í,Æ,Ñ,½Ž□,Ù,çf}f□,¶,á,È,ç,ì,Á, ,ñ,Û,èŠú'Ò,μ,È,ç,Á,È□B



## [,f,u,ì,c,c,d<@”\,đŽg,Á,Ä,Ý,½,ç,ì,Â,.,ª□D□D□D](#)

,f,u,ì,c,c,d<@”\,đŽg,ᄡ,É,Í□A,c,c,d{Rf}f“fh,đ’—,é,±,Æ,ª□o—^,éf\  
ftfgfEjFfA(,c,c,d{Nf%o{CfAf“fg),ª•K—v,Â,·□B,c,c,d<@”\  
,í,v,h,m,c,n,v,r,ì,Đ,Æ,Â,ì’â,«,È-Ú<Ê,È,ì,Â,·,ª□AftfŠ□[f\ftfg,Â,±,ì<@”\,đfTf|  
□[fg,μ,Ä,ç,é,à,ì,í, ,Ü,èĈ©Žó,¯,ç,ê,Ü,<sup>1</sup>ñ□BŽs”ì\ftfg,ì,l,r□|  
,v,n,q,c(f□□[fvf□)□A,l,r□|,d,w,b,d,k(•\ĈvŽZ)□A,l,r□|  
,` ,b,b,d,r,r(ff□[f^fx□[fX)□A,v,h,m,s,d,q,l(’Ê□Mf\ftfg),È,Ç,Â,ÍfTf|□[fg,μ,Ä,ç  
,Ü,·□B  
“Á,É’Ê□Mf\ftfg,đ’g,Ý□‡,í,<sup>1</sup>,½□ê□‡,É,Í□A’Ê□M’†,ÉŽ©“®“l,É,f,u,É%œ’œ,đ•\  
Ž|,<sup>3</sup>,<sup>1</sup>,é,±,Æ,ª%oÂ”\,Â,·□B



[,c,c,dŽd—l](#)

## G,s,...,',,Æ,f,u,ð~A"®,³,¹,é,É,ÍH

fVfFfAfEfFfA G,s,..., '(Version 2.X),É,Í,c,c,d<@"\,ì,æ,¿AfNf  
%ofCfAf"fg(fffBfXfefBfI[fVf+f"),¾,¯,ªTfI[fg,³,é,Ä,ç,Ü,·B—  
á,ì,ÎAfXfNfŠfvfg,ÉŽŸ,ì,æ,æ,É<Lq,·,é,ÆA,f,u,É test.bmp ,ð·\  
Ž,³,¹A,» ,ì,Æ,« ,ì,f,u,ì^É'u,ÆfTfCfY,ð·ì" #Rect ,É'ă"ü,·,é,±,Æ,ªo—^,Ü,·B—  
D G,ÈfXfNfŠfvfg,ªftfŠ[fVftfg,Æ,µ,ÄEöŠJ,³,é,é,ì,ðŠú'Ò,µ,Ü,·B



ddeinitiate "GV", "System"  
if( no ) error "DDE,ÉŽ, "s,µ,Ü,µ,½B"  
ddeexecute "FileOpen(test.bmp)"  
dderequest "WindowRect", #Rect  
ddeterminate

'ÊM'†ŽÓM,µ,È,ª,ç%œ'œ,ð·Ž!,·,éCE,Å,·,ªA'Êí,t,o,³,é,Ä,ç,é  
%œ'œff[f^,Á,Ä^³k,³,é,Ä,ç,Ü,·,æ,ÈH,„ŽRCE`'ăŠw,n,a,³,ñ



,à,¿,ë,ñA,» ,æ,ç,æ%œ'œ,ð·Ž!,·,é,É,ÍA,±,ìfXfNfŠfvfg,ì'O,É%œ'œ,ð  
%ð"€,·,éfXfNfŠfvfg,ð'Ç%Á,·,é·K—v,ª, ,è,Ü,·B,„fpfl,³,ñ



## [,v,h,m,s,d,q,l,Æ,f,u,ð~A“® ,³,¹,é,É,Í□H](#)

“ú-{"d<CfRf"fsf...□[f^fVfXfef€Š"Ž®%oiŽĐ,ì,v,h,m,s,d,q,l(Version 2.0)  
,É,Í,c,c,d<@"\,²fTf]□[fg,³,ê,Ä,ç,Ü,·□B—á,¡,Î□AfXfNfŠfvg,ÉŽŸ,ì,æ,α  
,É<L□q,·,é,Æ□A,f,u,É test.bmp ,ð•\  
Ž,³,¹□A,» ,ì,Æ,« ,ì,f,u,ì^É'u,ÆfTfCfY,ðfXf^□[•İ□"(—\—ñ•İ□") \*ddedata  
,É'ã"ü,·,é,±,Æ,²□o—^,Ü,·□B—D□G,ÈfXfNfŠfvg,²ftfŠ□[f\  
ftfg,Æ,μ,ÄÆöŠJ,³,ê,é,ì,ðŠú'Ò,μ,Ü,·□B



```
execute "FileOpen("test.bmp")": "GV": "System"  
request "WindowRect": "GV": "System"
```



**,f,u,É,í,n,k,d,ì<@”\,í-³,ç,ì,Á,.,©□H**

Žc”O,È,ª,ç,n,k,d,ì<@”\,í, ,è,Ü,¹,ñ□B□],Á,ÄfŠf“fN“\,è•t,¯,â-  
,,,ß□ž,ÝfIfufWfFfNfg,ìì□¬,í□;ì,Æ,±,ë□o—^,Ü,¹,ñ□B,±,ê,ª□o—^,é,Æ,;²,ç  
,ñ,Á,·,ª,Ë□B



## ,c,c,dŽd—l

,f,u,í,c,c,dfT[]fo[]if[]fX[]j,Æ,μ,Ä"®[]ì,·,é,±,Æ,à%oÄ"\,Å,·[]B,±  
,ê,É,æ,Á,Ä[]Aftf@fCf<f}f[]fWff,©,ç,f,u,đŠf,[]fgfRf"f[]f<,μ,½,è[]Af[]f[]fvf[],  
â•\CEvŽZ,Æ~A"®,<sup>3</sup>,<sup>1</sup>,½,è,·,é,æ,α,È[]A,v,%o,Ž,,,,[],—," ,È,ç,Å,í,ì[],"x,È%ož—  
p,žÀÆ»[]o—^,Ü,·[]B

,à,μ'É[]Mf\ftfg,<sup>3</sup>,c,c,dfNf%ofCfAf"f[]g,ì<@"\,đ"ö,|,Ä,ç,Ä,f,u—  
p,ÉfjXf^f}fCfY[]o—^,é,È,ç[]A'É[]Mf\ftfg,ÅŽó[]M,μ,½ff[]f^,đ,½,¾,ç,É,f,u,É•\  
Ž|,·,é,±,Æ,à%oÄ"\,Å,·[]B

,c,c,d,đŽg—p,·,é,Æ,«,í<N"®flfvfVf‡f",É,c,c,df[]fvfVf‡f",đŽw'è,μ,Ä%o<sup>o</sup>,<sup>3</sup>,ç[]B

,c,c,dfT[]fo,ìŽd—l

,c,c,d,lfT[]fo[][-¼

,c,c,d,lf[]gfsfbfN-¼

,c,c,d,ìŽÀ[]sfRf}f"f[]h

,c,c,d,lfAfCfef€

,c,c,d,lfAfhfof^fCfY

,c,c,d,ì%ož—p—á

,c,c,dŽd—l,ì•i[]X"

**,c,c,d,lfT[]fo[][-1/4**

,f,u,lfT[]fo[][-1/4,í GV ,Å,·B

,c,c,dŽd—l

## ,c,c,d,lfqfsbfN-¼

,c,c,d,lfqfsbfN-¼,Í System ,Å,·B%Šú  
%»f[bfZ[fW,đuf[fhfLfffXfg,³,ê,½,Æ,«AGV | System ,É%ž“š,μ,Ü,·B

,c,c,dŽd—l

## ,c,c,d,ìŽÀ[]sfRf}f“fh

,f,u,í,c,c,d,ÅŽó,~Žæ,Á,½Žÿ,ìfRf}f“fh,É  
%ž“š,μ,Ü,·[]B(\*)^ó,í[]AŽRCE`'åŠw,n,a,Æ,ì<α“~[]ÝCEv,É,æ,Á,Ä[]Ý'è,<sup>3</sup>,ê,½,à,ì,È,ì  
,Å[]A[]«—^“l,ÈŽd—l,ì•ì[]X,í”äŠr“l[],È,ç  
,ÆŽv,í,ê,Ü,·[]B(\*\*)^ó,í,f,u,O[]D,U,R,Å,íŽÀ'•,<sup>3</sup>,ê,Ä,ç,Ü,<sup>1</sup>,ñ[]B

,c,c,d[]Fftf@fCf<,ðf[]fvf“(\*)  
,c,c,d[]FŠp“x,ðŽw'è,μ,Äftf@fCf<,ðf[]fvf“  
,c,c,d[]FfEfBf“fhfE,ì^Ê'u,ðŽw'è(\*)  
,c,c,d[]F%œ'œ,ð[],'¬,É•\Ž!(\*)(\*\*)  
,c,c,d[]F%œ'œ“Ç,Ý[]ž,Ý,ì't'f(\*)(\*\*)  
,c,c,d[]F%œ'œ,ì“\,è•t,¬  
,c,c,d[]FfNfHf“f^fCfY•û-@,ìŽw'è  
,c,c,d[]FŠg'å—l,ðŽw'è  
,c,c,d[]FfAfXfyfNfg”ä,ìŽw'è  
,c,c,d[]F%ñ“]•ûCEü,ìŽw'è  
,c,c,d[]F,f,u,ð[]l—<sup>1</sup>,<sup>3</sup>,<sup>1</sup>,é  
,c,c,d[]F,f,u,ì•\Ž![]^”ñ•\Ž!,ð[]Ø,è'Ö,l,é  
,c,c,d[]F,f,u,ðfAfCfRf“,É[]Ø,è'Ö,l,é

,c,c,dŽd—l

## **,c,c,d ftf@fCf<,đfI[fvf“ (FileOpen)**

FileOpen(<ftf@fCf<-¼>)

ftf@fCf<-¼

•\Ž!,<sup>3,1</sup>,éftf@fCf<-¼

<@“\FŽw’è,<sup>3</sup>,ê,½ftf@fCf<,đfI[fvf“,μA•\Ž!,.,éB  
—ájFileOpen(B:\TEST.BMP)

,c,c,d,ìŽÀ[sfRf}f“fh

## ,c,c,d\FŠp“x,đŽw’è,μ,Äftf@fCf<,đfi□[fvf“(FileOpenEx)

FileOpenEx(<ftf@fCf<-¼>,<%oň“]ftf%ofO>)

ftf@fCf<-¼

•\Ž!,<sup>3,1</sup>,éftf@fCf<-¼

%oň“]ftf%ofO

L□F□¶%oň,è,X,O“x%oň“]

R□F%oE%oň,è,X,O“x%oň“]

,»^èÈŠO□F%oň“],μ,È,ϕ

<@“\□FŽw’è,<sup>3,è,½</sup>ftf@fCf<,đ%oň“]ftf%ofO,ÄŽw’è,<sup>3,è,½</sup>•ûÆü,É%oň“],μ,Ä•\  
Ž!,·,é

,c,c,d,ìŽÀ□sfRf}f“fh

## [,c,c,d,FfEfBf“fhfE,ì^Ê'u,đŽw'è\(SetWindowPos\)](#)

SetWindowPos(<Zflag>,<XÀ•W>,<YÀ•W>,<•>,<,,<sup>3</sup>>,<ó'Ô>)

Zflag

-1FTOPMOST

1FBOTTOM

<XÀ•W>,<YÀ•W>,<•>,<,,<sup>3</sup>>

GV,ìV,μ,ϕ^Ê'u,ÆfTfCfY

ó'Ô

0Ffm[f]f<

1FfAfCfRf“%o»

2FÅ'â%o»

<@“\F,f,u,ì^Ê'uA<y,ÑfTfCfY,đ•ìX,.,é

—ájSetWindowPos(1,0,0,100,100,0)

[,c,c,d,ìŽÀ\[sfRf}f“fh](#)



**,c,c,d[F%œ'œ,đ, '¬,É•\Ž!(ViewDraft)**

ViewDraft()

<@"\F%œ'œfCf[fW,đ, '¬,É•\Ž!, ,é  
|,Ü,¾ŽÀ'•,³,ê,Ä,ç,È,ç

,c,c,d,ìŽÀ[sfRf}f"fh

## ,c,c,d\F%œ'œ“Ç,Ýž,Ý,ì't'f(FileClose)

FileClose()

<@"\F%œ'œ“Ç,Ýž,Ý,ì't'f,·,é

ì,Û,¼ŽÀ'•,³,ê,Ä,ç,È,ç

,c,c,d,ìŽÀ\sfrf}f“fh

## ,c,c,d□F%œ'œ,ì"\,è•t, (ClipPaste)

ClipPaste()

<@"\□FfNfŠfbfvf{□[fh,ìff□[f^,ðŽœ,è□ž,Þ

,c,c,d,ìŽÀ□sfRf}f“fh

## ,c,c,d\FfNfHf“f^fCfY•û-@,lŽw’è(Quantize)

Quantize(<f,[]fh>,<[]F[]”>,<Path>,<Dither>)

f,[]fh

ON:Ā,[]F,đ,·,é

OFF:Ā,[]F,đ,μ,È,ϕ

AUTO:Ā,[]FĀ<%oÊ,đfffBfXfvfĀfCfhf%ofCfo,l”\—Í,É, ,í,<sup>1</sup>,é

[]F[]”

8[]FĀ,[]FĀă,l[]F[]”,đ8[]F,É,·,é

16[]FĀ,[]FĀă,l[]F[]”,đ16[]F,É,·,é

256[]FĀ,[]FĀă,l[]F[]”,đ256[]F,É,·,é

Path

1:Ā,[]F•û-@,đ1Pass,É,·,é

2:Ā,[]F•û-@,đ2Pass,É,·,é

Dither

ON:Ā,[]FŽž,ÉfffBfU,đŽg,κ

OFF:Ā,[]FŽž,ÉfffBfU,đŽg,í,È,ϕ

<@”\[]F,f,u,lĀ,[]Ff[]fv[]f[]f[]”,đ[]Ý’è,·,é

,c,c,d,lŽÀ[]sfRf}f[]fh

## ,c,c,d FŠg'â—!,đŽw'è(ZoomRate)

ZoomRate(<Šg'â—!>)

Šg'â—!

Šg'â—!

<@"\ FŠg'â—!,đŽw'è,·,é BCE» Y,ì·\Ž! ó'Ô,à·ĭ X,·,é B

,c,c,d,ìŽÀ sfRf}f"fh

**,c,c,d fAfXfyfNfg"ä,İŽw'è(Aspect)**

Aspect(<fAfXfyfNfg"ä/-1>,<'²®f^fCfv:W/H/I/D/Other>)

fAfXfyfNfg"ä

fAfXfyfNfg"ä

-1F•İX,μ,È,ϕ

'²®f^fCfv

,v^,g^,h^,cF,»,ê,¼,ê,ÉÝ'è

,»,ê^ÈŠOF•İX,μ,È,ϕ

<@"\fAfXfyfNfg"ä,đŽw'è,·,éBCE»Ý,ì\Ž!ó'Ô,à•İX,·,éB

,c,c,d,İŽÀ[sfRf}f"fh

## **,c,c,d[F%oň"]•ûĚü,ìŽw'è(Rotate)**

Rotate(<%oň"]•ûĚü:L/R>)

%oň"]•ûĚü

,k^,q[F,»,ê,¼,ê,ì•ûĚü,É%oň"]

<@"\F\Ž|,³,ê,Ä,ç,é%œ'œ,đ%oň"],μ,Ä•\Ž|,·,éB

,c,c,d,ìŽÀ[sfRf}f"fh

**,c,c,d\F,f,u,đ|—<sup>1</sup>,<sup>3</sup>,<sup>1</sup>,é(ExitGV)**

ExitGV()

<@\F,f,u,đ|—<sup>1</sup>,:,:éB

,c,c,d,ìŽÀ\sRf}f“fh



**,c,c,d F,f,u,ì•\Ž;□^”ñ•\Ž!,đ□Ø,è‘Ö,!,é(ShowGV)**

ShowGV(<f,□[fh>)

f,□[fh

□@□@ON□F,f,u,đ•\Ž!□ó‘Ô,É,·,é

□@□@OFF□F,f,u,đ”ñ•\Ž!□ó‘Ô,É,·,é

<@”\□F,f,u,ì•\Ž!□E”ñ•\Ž!,đ□Ø,è‘Ö,!,é

**,c,c,d\F,f,u,đfAfCfRf“,ÉØ,è‘Ö,ı,é(IconGV)**

IconGV(<f, [fh>)

f, [fh

@ON\F,f,u,đfAfCfRf“•\Ž!,É,ı,é

@OFF\F,f,u,đ‘Éı•\Ž!,É,ı,é

<@“\F,f,u,đfAfCfRf“ó‘Ô,đØ,è‘Ö,ı,é

,c,c,d,ìŽÀ[sfRf}f“fh

## .c,c,d,lfAfCfef€

CE»Ý,ìfo[fWf#f“,Å,íA^È%º,ìfAfCfef€,ðTf|f[fg,µ,Û,·BfNf  
%ofCfAf“fg(ffBfXfefBf|fVf#f“),íA,±,ìff[f^,ðfŠfNfGfXfg,·,é,±,Æ,Å,f,u,ì\  
Ž,ìó’Ô,ð’m,é,±,Æ,ºo—^,Û,·B

.c,c,d[FfEfBf“fhfE<éCE`,ìŽæ“¾

.c,c,d[F,c,h,afŠfNfGfXfg,ì<-ºoÂ

.c,c,d[F•Ž!‘t,ìºoæ’œ,c,h,a,ìŽæ“¾

.c,c,dŽd—l

## ,c,c,d□FfEfBf“fhfE<éCE` ,iŽæ“<sup>3</sup>/<sub>4</sub>(WindowRect)

fAfCfef€ : WindowRect

•Ô“šff□[f^□FCF\_TEXT

<X□À•W>,<Y□À•W>,<•□>,<□,,<sup>3</sup>>,<□ó'Ô:0,1,2>

,c,c,d,ḷfAfCfef€

## ,c,c,d F,c,h,afŠfNfGfXfg,ì<-‰oÂ(DIBRequest)

fAfCfef€ : DIBRequest

•Ô“šff[f^FCF\_TEXT

ON :fŠfNfGfXfgDIB,ð'—,Á,Ä,à,ç,ç

OFF:œ»Ÿ•Ž|'†,ì,½,βfŠfNfGfXfgDIB,ð'—,Á,Ä,í,¾,β

,c,c,d,lfAfCfef€

**,c,c,d\F•\Ž!'t,ì%œ'œ,c,h,a,ìŽæ“¾(DIB)**

fAfCfef€ : DIB

•Ô“šff[f^FCF\_DIB

•\Ž!'t,ì%œ'œff[f^

,c,c,d,ìfAfCfef€

## .c,c,d,lfAfhfof^fCfY

,f,u,ífEfBf“fhfE,ì^Ê'u,âfTfCfY,ª•ïX,³,ê,½,Æ,«AŽŸ,ì€-Ú,đfNf  
%ofCfAf“fg(ffBfXfefBfI[fVf‡f“),Ö'Ê'B,μ,Û,·B

fEfBf“fhfE^Ê'u^Ú”®  
fEfBf“fhfEfTfCfY•ïX  
'—Mff[f^FCF\_TEXT  
<XÀ•W>,<YÀ•W>,<•>,<,,³>,<ó'Ô:0,1,2>

.c,c,dŽd—l

## ,c,c,d,ì%ž—p—á

—á,!,îAŽRĚ`'šw,n,aîî-,ì,w,k,g,` Version 0.2  
^Èã,đftf@fCf<f}fî[fWff,É'g,Ýž,ň,Å,Ý,Ä%º,³,čBftf@fCf<f}fî[fWff,Åfj[f\  
f<,đ"® ,© ,·,¾, -,Å,f,u,ì%œ'œ,đŽŸX,ÆØ,è'Ö,!,Ä•Ž!,µ,Ä,ä,,±,Æ,º%Â\  
,Å,·B  
,Ü,½,Æ,Ñ,½Ž,í,f,u,ì,c,c,d<@"\,đftf<,ÉŽg,Á,½fNf  
%ofCfAf"fgfAfvfŠfP[fVf†f",đîî- 't,ì-í-l,Å,·B

,c,c,dŽd—l



## ,c,c,dŽd—l,ì•ïX“\_

,c,c,d,í,f,u,ìfo[fWf#f“,O□D,U,R,Å,í,¶,ß,ÄfTf|□[fg,<sup>3</sup>,ê,Ü,μ,<sup>1</sup>/<sub>2</sub>□B□  
,Á,Ä^È‘O,ìfo[fWf#f“,Æ,ì•ïX“\_ ,í, ,è,Ü,<sup>1</sup>,ñ□B

,c,c,dŽd—l

**,Æ,Ñ,½**

□³'ì•s-¾,lfTf“ff□[fvf□fOf%of}□BŽâ,ÉNIFTY,É□¶'§□B□o-  
v□ê□Š,ÍFWINMM,âFGALAV,ì,±,Æ,¾½,ç□B,b,f,đŽâ,È□H—¿,Æ,μ□A  
%oa•t,¯,μ,â,·,□l,ÉŠμ,ê,â,·,ç□B

Æ»□Ý,í,X,W,ÅWindows,đŽg,Á,Ä,ç,é,¾□A-§,©,ÉÆÝŠ·<@□w“ü,đ□l,!,Ä,ç  
,é,ç,μ,ç□B

Nifty ID : PBC02026

## ,x,t,h,o,n

Žã,É,o,b|,u,`,mF,r,h,fu'm“lŹY  
%öi<c v,ÉŹ‘\$B,½,Ü,É,v,h,m,c,n,v,r@,r,h,f,É,ào-  
v,µ,Ü,·BCEÝŠ·<@·,X,Wft[fU[,ÅAÅ<ßfLfffvf`ff[fj[fh,ðw“üA,α,Ü,-  
“® , © , È , ç , ½ , ß Ž l < ê ” ð < ê , µ , Ä , ç , Ü , · B

fnf“fhf<-¼u,x,t,h,o,nv,ì—R—^,Å, ,éœ<^ßi'·—j,í,à,α,Sî,É,È,èA—c't  
%o€ , ì ” N ’ t , ³ , ñ , É , È , è , Ü , µ , ½ B , j , h , c , o , h , w A , l , n , s , g , d , q @ , f , n , n , r , d , É - ² ’ t , Å , · B

PC-VAN ID : BRM01050

NIFTY ID : QFH02076

## ŽRĚ`'áŠw,n,a

Ě»Ÿ,r,h,f[u%»Šw,ÆfRf“fsf...[f^v,lf\ftfgšJ”Žº,ì<c'·,ð,â,Á,Ä,č,Ü,·B  
,f,u,ì,c,c,dŽd—lô'è,ìu,č,č  
,¾,µ,Á,Øv,ÍŽ,,,¾,Á,½,ì,Â,·,ª[A,Æ,Ñ,½Ž,í,»è,É,Æ,Ç,Ü,ç,`A,¾,ç,È,é”“W,ð,¾,  
è,Ä,“,ç,è,é,æ,æ,Á,·B



ŽRĚ`Ěš•Ä'òŽsŸZ  
(•Ä'ò<ð'm,Á,Ä,č,Ü,·,©H)

-{-¼ : —š%oÔ~aG  
<î-±æ : ŽRĚ`'áŠwHŠw•”  
PC-VAN ID : MHD26706  
NIFTY ID: PDD02274

## fpfl,¾,ň

“ä,lfAfvfšEft[fU[[]ž©[](^\_^;;[]AŽž[X,o,b[]  
,u,`,m,ì,r,h,f[u'm“lôî•ň[]ŽYv,ì%oì<cžºu,v,h,mš^—p[v<y,Ñ[ufn[]fhš^—  
p[v,É[],<[]ž,ň,Á,č,Ü,·B,±,lfwf<fv,lfrfbfgf}fbfv,íV[]¥—  
·s,ì€”õ't,É[]î¬,µ,Ü,µ,½B  
,»è,É^è•”,Á—L-¼,È[u,e,a,',[],—,“,...  
,’v[]i”’àV,¾,ň[]NIFTY:PBB00553[]j,ì\$[]žž,Éfrfbfgf}fbfv[]EfffUfCf”,ð,“žè”,ç  
,µ,½,±,Æ,ª,è,Ü,·B  
Ě»Ÿ,í,u,a,Á,v,h,mfAfvfš,ì×<'t,Á,·B[]ŠF—l,ì,“-ð,É—š,Ä,é,æ,æ  
,È[]î·i,ð[]è,½,ç,à,ì,Á,·B

PC-VAN ID : HKM62718  
NIFTY ID: GBA02152

## [fwf<fv\[\]-\[\]i•ñ](#)

*MakingOfHelp*

,±,lfwf<fv,í[]A“ú- {Œê,l,r[],v,n,q,cfo[] [fWf#f“,T[]D,O<y,Ñ,l,r[],v,h,m,c,n,v,r[]  
,r,c,j,R[]D,P,É,æ,Á,Ä[]-³,ê,Ä,“,è,Ü,·[]B

## Windows ,lfL[‘€̀ì

^È%º,lfL[f{[fh‘€̀ì,ÉŠÖ,·,éfgfsfbfN,Í Windows ,lfwf<fv,Æ,μ,Ä“Y•t,<sup>3</sup>,ê,Ä,ç  
é,à,ì,ð,».,ì,Ü,ÜŽg,Á,Ä,ç,Ü,·B,±,ì,æ,α  
,ÈfL[f{[fh‘€̀ì,ÉŠÖ,·,éfgfsfbfN,ðfAfvfŠfP[fvff“ ,É“Y•t,·,é,±  
,Æ,<sup>a</sup>,Ä,«.,Ü,·DWindows ,Ä,ÍA%º<L,ì,æ,α,ÈfL[‘€̀ì,ðs,α,±,Æ,<sup>a</sup>,Ä,«.,Ü,·D  
f[f<^Ú“® ,ÉŠÖ,·,éL[‘€̀ì  
f\_fCfAfO f{fbfNfX,ÉŠÖ,·,éL[‘€̀ì  
•Ow,ÉŠÖ,·,éL[‘€̀ì  
fwf<fv,ÉŠÖ,·,éL[‘€̀ì  
fif...[ ,ÉŠÖ,·,éL[‘€̀ì  
fVxfef€,ÉŠÖ,·,éL[‘€̀ì  
fefLxfg‘l‘đ,ÉŠÖ,·,éL[‘€̀ì  
fEfBf“fhfE,ÉŠÖ,·,éL[‘€̀ì

fj [f]f<^Ú“® ,ÉŠÖ,.,éfL [‘€]i  
 fefLfXfg f{fbfNfX,â‘¼,lfefLfXfg“ü—í,ð,.,éêŠ,Å,íCŽŸ,lfL[,ðŽg,Á,Äf [fA  
 f<({“üf|fCf“f^),ð^Ú“®,μ,Ü,·D

fL [	{“üf fCf“f^,ì^Ú“®
[ ] <sup>²</sup>	1sã
[ ]«	1s% <sup>º</sup>
[ ]”	1•ŸŽš% <sup>º</sup> E
[ ]©	1•ŸŽš [ ]
[CTRL]+[ ]”	1’PĚê% <sup>º</sup> E(% <sup>º</sup> op•Ÿ,ìê [ ]‡,ì,Ý)
[CTRL]+[ ]©	1’PĚê [ ]Ÿ(% <sup>º</sup> op•Ÿ,ìê [ ]‡,ì,Ý)
[HOME/CLR]	[ ]s,ì [ ]æ“ <sup>²</sup>
[HELP]	[ ]s,ì [ ]ÅĚã
[ROLL DOWN]	1% <sup>º</sup> æ-Ê [ ]ã
[ROLL UP]	1% <sup>º</sup> æ-Ê% <sup>º</sup>
[CTRL]+[HOME/CLR]	•Ÿ [ ]’,ì [ ]æ“ <sup>²</sup>
[CTRL]+[HELP]	•Ÿ [ ]’,ì [ ]ÅĚã

f\_fCfAf\_fO f{fbfNfX,ÉŠÖ,·,éfL□[‘€̀ì  
f\_fCfAf\_fO f{fbfNfX“à,À,ÍŽŸ,lfL□[,đŽg,č,Ü,·□D

fL□[  
[TAB]

<@”\

flfvfVf#f“, ©,çflfvfVf#f“,É^Ú“® ,μ,Ü,·(□¶,©,ç  
%oE□C□ã,©,ç%oo°)□D

[SHIFT]+[TAB]  
[GRPH]+·¶ŽšfL□[

flfvfVf#f“, ©,çflfvfVf#f“,É<t·ûœü,É^Ú“® ,μ,Ü,·□D  
%oo°□ü·t,«,ì·¶Žš,“ü—  
Í,μ,½·¶Žš,Æ^ê’v,·,éflfvfVf#f“,âfOf<□[fv,É^Ú“® ,μ,  
Ü,·□D

·ûœüfL□[

flfvfVf#f“,lfOf<□[fv“à,Å□C‘I’đf□[fA  
f<,đflfvfVf#f“, ©,çflfvfVf#f“,É^Ú“® ,μ,Ü,·□D,Ü,½,Í□  
CfŠfXfg f{fbfNfX,âfefLfXfg f{fbfNfX“à,Å□Cf□[fA  
f<,đ□ã%oo°□¶%oE,É^Ú“® ,μ,Ü,·□D

[HOME/CLR]

fŠfXfg f{fbfNfX,âfefLfXfg  
f{fbfNfX“à,ì□æ“a,ì□€-  
Ú,Ü,½,Í·¶Žš,É^Ú“® ,μ,Ü,·□D

[HELP]

fŠfXfg f{fbfNfX,âfefLfXfg  
f{fbfNfX“à,ì□Åœã,ì□€-  
Ú,Ü,½,Í·¶Žš,É^Ú“® ,μ,Ü,·□D

[ROLL UP]

fŠfXfg f{fbfNfX,Å1%ooæ-Ê’P^Ê,ÉfXfNf□□[f<  
f\_fEf“,μ,Ü,·□D

[ROLL DOWN]

fŠfXfg f{fbfNfX,Å1%ooæ-Ê’P^Ê,ÉfXfNf□□[f<  
fAfbfv,μ,Ü,·□D

[GRPH]+[□<]

fhf□fbfvf\_fEf“ fŠfXfg  
f{fbfNfX,đfì□[fvf“,μ,Ü,·□D

[GRPH]+[□²],Ü,½,Í[□<]

fhf□fbfvf\_fEf“ fŠfXfg f{fbfNfX,ì□€-  
Ú,đ‘I’đ,μ,Ü,·□D

fXfy□[fXfL□[

fŠfXfg f{fbfNfX,Å□€-  
Ú,đ‘I’đ,μ,½,è□C‘I’đ,đŽæ,è□Á,μ,Ü,·□D  
f\_ffbfN f{fbfNfX,đ‘I’đ,Ü,½,ÍfNfŠfA,μ,Ü,·□D

[CTRL]+fXf%ofbfvf...(/) fŠfXfg f{fbfNfX,ì,·,x,Ä,ì□€-Ú,đ‘I’đ,μ,Ü,·□D

[CTRL]+[\\]

œ»□Ý,ì□€-Ú,đ□œ,-  
·,·,x,Ä,ì‘I’đ,đŽæ,è□Á,μ,Ü,·□D

[SHIFT]+·ûœüfL□[

fefLfXfg f{fbfNfX“à,ì‘I’đ”í^í,đŠg’£,μ,Ü,·□D

[SHIFT]+[HOME/CLR] fefLfXfg f{fbfNfX“à,ì‘I’đ”í^í,đ□æ“a,ì·¶Žš,Ü,ÅŠg’£  
,μ,Ü,·□D

[SHIFT]+[HELP]

fefLfXfg  
f{fbfNfX“à,ì‘I’đ”í^í,đ□Åœã,ì·¶Žš,Ü,ÅŠg’£  
,μ,Ü,·□D

fŠf^□[f“fL□[

fRf}f“fh f{f^f“,đŽÀ□s,μ,Ü,·□D,Ü,½,Í□CfŠfXfg  
f{fbfNfX“à,ì□€-  
Ú,đ‘I’đ,μ,Ä□CfRf}f“fh,đŽÀ□s,μ,Ü,·□D

[ESC],Ü,½,Í[GRPH]+[f#4]

fRf}f“fh,đ‘t’f,μ,Ä□Cf\_fCfAf\_fO  
f{fbfNfX,đfNf□□[fY,μ,Ü,·(【Zæ□A】f{f^f“,Æ“~—  
l)□D





• ÕW, ÉŠÖ, ., éfL [‘€ì

fefLfXfg, ð • ÕW, ., é, Æ, «, íŽŸ, ìfL [ , ðŽg, ç, Ü, . D

fL [ [BS]

<@”\ ‘}“üf|

[DEL]

fCf“f^ , ì [ , ì • ¶Žš, ð [ í [ œ, µ, Ü, . D, Ü, ½, í [ C ‘ l ‘ ð, µ, ½ fefLfXfg, ð [ í [ œ, µ, Ü, . D ‘}“üf|fCf“f^ , ì %oE, ì • ¶Žš, ð [ í [ œ, µ, Ü, . D, Ü, ½, í [ C ‘ l ‘ ð, µ, ½ fefLfXfg, ð [ í [ œ, µ, Ü, . D

[SHIFT]+[DEL]

‘ l ‘ ð, µ, ½ fefLfXfg, ð [ í [ œ, µ, Ä [ C f N f Š f b f v f { [ [ f h, É ^ Ú, µ, Ü, . D

[SHIFT]+[INS]

fNfŠfbfvf { [ [ f h, ì fefLfXfg, ð f AfNfefBfu fEfBf“fhfE, É ‘}“ü, µ, Ü, . D

[CTRL]+[INS]

‘ l ‘ ð, µ, ½ fefLfXfg, ð • j ŽÊ, µ, Ä [ C f N f Š f b f v f { [ [ f h, É ^ Ú, µ, Ü, . D

[GRPH]+[BS]

‘ ¼ ‘ O, ì • ÕW ‘ € ì , ð Ž æ, è [ Á, µ, Ü, . D

fwf<fv,ÉŠÖ,·,éfL□['€□ì

fwf<fv,ǎŽQ□Æ,·,é,Æ,«,ÍŽŸ,ìfL□[,ǎŽg,ç,Ü,·□D

fL□[  
[f¥1]

<@”\

fAfvfŠfP□[fVf†f“ ,ìfwf<fv,ǎ’T,μ,Ä□Cfwf<fv,ì□ǎ^ø,ǎ•\  
Ž!,μ,Ü,·□D,·,Å,Éfwf<fv fEfBf“fhfE,ǎfI□[fVf“ ,μ,Ä,ç  
,é,Æ,«,É[f¥1]fL□[,ǎ%Ÿ,·,Æ□Cfwf<fv,ìŽg,ç•û,ì□ǎ^ø,ǎ•\  
Ž!,μ,Ü,·□DWindowsfAfvfŠfP□[fVf†f“ ,ì’t,É,í□C[f¥1]fL□[,  
ǎ%Ÿ,·,Æ□C‘ì’ǎ,μ,½fRf}f“fh□Cf\_fCfAf□fO f{fbfNfX  
f|fvfVf†f“□CfVfXfef€ f□fbfZ□[fW,È,Ç,ÉŠÖ,·,éfwf<fv□€-  
Ú,ǎ•\Ž!,·,é,à,ì,<sup>a</sup>, ,è,Ü,·□D

[SHIFT]+[f¥1]

f|fCf“f^,ǎ?(<^ -â•,,),É•ì,í,è□C“Á’è,ìfRf}f“fh□C%œ-Ê—  
ì^æ□CfL□['€□ì,ÉŠÖ,·,éfwf<fv,ǎŽQ□Æ,Å,«,é,æ,π  
,É,È,è,Ü,·□D,±,ì□ó’Ô,Å□CfRf}f“fh,ǎ‘ì’ǎ,μ,½,è□C%œ-  
Ê,ì, ,é—ì^æ,ǎfNfŠfbfN,μ,½,è□C“Á’è,ìfL□[,ǎ  
%Ÿ,μ,Ä□C,»,è,ç,É,Å,ç,Ä□Ú,μ,’m,é,±,Æ,<sup>a</sup>,Å,«,Ü,·□D,±  
,ì<@”\,í□C“Á’è,ìWindowsfAfvfŠfP□[fVf†f“ ,¾, ,<sup>a</sup>Ž□,Á,Ä,ç  
,é,à,ì,Å,·□D

f f f f ... [ , É Š Ő , , é f L [ ' € ì

f f f f ... [ , â f R f } f " f h , ð ' l ' ð , , é , Æ , « , í ž Ÿ , ì f L [ , ð ž g , ç , Ü , · □ D

f L [

[ GRPH ] , Ü , ½ , í [ f ¥ 10 ]

• ¶ ž š f L [

[ © ] , Ü , ½ , í [ " ]

[ ¢ ] , Ü , ½ , í [ « ]

f Š f ^ [ f " f L [

[ ESC ]

< @ " \

f f f f ... [ fo [ [ ã , ì æ " a f f f f ... [ , ð ' l ' ð , μ , Ü , · □ D

% ° ü • t , « , ì • ¶ ž š , ¢ " ü — í , μ , ½ • ¶ ž š , Æ ^ ê ' v , , ; é f f f f ...

[ , â f f f f ... [ [ € - Ú , ð ' l ' ð , μ , Ü , · □ D

f f f f ... [ Š Ő , ð ^ Ú " ® , μ , Ü , · □ D

f f f f ... [ [ € - Ú Š Ő , ð ^ Ú " ® , μ , Ü , · □ D

' l ' ð , μ , ½ f f f f ... [ [ € - Ú , ð ž Å s , μ , Ü , · □ D

' l ' ð , μ , ½ f f f f ... [ [ C , Ü , ½ , í f f f f ... [ [ € -

Ú , ð ž æ , è Å , μ , Ü , · □ D

**fVfXfef€ ,ÉŠÖ ,. ,éfL [ '€ ]**

ŽÄ s, μ, Ä, ç, éfAfvfŠfP [fVf#f" ,É, ©, ©, í, ç, . □CŽŸ, ìfL [ , í" C ^ Ó, ìfEfBf" fhfE, ÅŽg, x, ± ,Æ, a, Å, «, Ü, . □D

**fL [**

<@" \

**[CTRL]+[ESC]** f ^ fXfN fŠfXfg, É □ Ø, è ' Ö, !, Ü, . □D

**[GRPH]+[ESC]** ŽŸ, ìfAfvfŠfP [fVf#f"

fEfBf" fhfE, Ü, ½, ìfAfCfRf" (ftf < fXfNfŠ [f" fvf □ fOf % œ f€ , ð Š Ü, p), É □ Ø, è ' Ö, !, Ü, . □D

**[GRPH]+[TAB]** ŽŸ, ìfAfvfŠfP [fVf#f"

fEfBf" fhfE, É □ Ø, è ' Ö, ! □ CfAfCfRf" , ÅŽÄ s, μ, Ä, ç , éfAfvfŠfP [fVf#f" , í • œ €³, μ, Ü, . □D

**[COPY]** % œ æ - Ê ã, ìfCf □ □ [fW, ð fNfŠfbfvf { □ [fh, É • ; Ž Ê, μ, Ü, . □D

**[GRPH]+[COPY]** fAfNfefBfu

fEfBf" fhfE, ìfCf □ □ [fW, ð fNfŠfbfvf { □ [fh, É • ; Ž Ê, μ, Ü, . □D

**[GRPH]+[f¥4]** fAfNfefBfu fAfvfŠfP [fVf#f"

fEfBf" fhfE, ð fNf □ □ [fY, μ, Ü, . □D

**[CTRL]+[f¥4]** fAfNfefBfu • ¶ □ ' fEfBf" fhfE, ð fNf □ □ [fY, μ, Ü, . □D

**[f¥1]** fAfvfŠfP [fVf#f" , ìfwf < fv, ð ' T, μ, Å □ Cfwf < fv, ì □ ð ^ ø, ð • \ Ž !, μ, Ü, . (fwf < fv, ÉŠÖ ,. ,éfL [ '€ ] , ð Ž Q □ Æ ) □D

**fefLfXfg 'I'đ,ÉŠÖ,·,éfL[ '€ ]**

ŽŸ,ÉŽ|,·fL[ ,íC,Ü,Æ,ñ,Ç,WindowsfAfvfŠfP[fVf+f“ ,Å— ~ —

p,Å,«,Ü,·D,½,¾,μC,±,±,ÉŽ|,μ,½,ç, -

,Å,©,lfL[ ,íCfefLfXfg,ª'I'đ,Å,«,éêÊŠ,Å,μ,©— ~ —

p,Å,«,Ü,¹,ñD“Á'è,lfAfvfŠfP[fVf+f“ ,lfL[ '€ ]i,É,Å,ç

,Ä,íC,» ,lfAfvfŠfP[fVf+f“ ,lfwf<fv,É, ,éfL[f{ [fh,]€-Ú,đŽQÆ,μ,Ä,,¾,¾,çD

**fL[**

**<@”\**

**[SHIFT]+[ ]**,Ü,½,í[ ]

fefLfXfg,đ¶,Ü,½,í

%oE,É1•¶ŽŠ, ,Å'I'đ,μ,Ü,·D,Ü,½C,·,Å,É•¶

Žš,ª'I'đ,³,ê,Ä,ç

,é,Æ,«,íC,» ,ê,đŽæ,èÁ,μ,Ü,·D

**[SHIFT]+[ ]**,Ü,½,í[ ]

1[s]ã,Ü,½,í

%oº,lfefLfXfg,đ'I'đ,μ,Ü,·D,Ü,½C,·,Å,É[s,ª

'I'đ,³,ê,Ä,ç,é,Æ,«,íC,» ,ê,đŽæ,èÁ,μ,Ü,·D

**[SHIFT]+[ROLL DOWN]**

1%oæ-

Êã,lfefLfXfg,đ'I'đ,μ,Ü,·D,Ü,½C,·,Å,É'Ö,ì

fEfBf“fhfE,ª'I'đ,³,ê,Ä,ç

,é,Æ,«,íC,» ,ê,đŽæ,èÁ,μ,Ü,·D

**[SHIFT]+[ROLL UP]**

1%oæ-Ê

%oº,lfefLfXfg,đ'I'đ,μ,Ü,·D,Ü,½C,·,Å,É'Ö,ì

fEfBf“fhfE,ª'I'đ,³,ê,Ä,ç

,é,Æ,«,íC,» ,ê,đŽæ,èÁ,μ,Ü,·D

**[SHIFT]+[HOME/CLR]**

[s,ìæ“ª,Ü,ÅfefLfXfg,đ'I'đ,μ,Ü,·D

**[SHIFT]+[HELP]**

[s,ìÅÆã,Ü,ÅfefLfXfg,đ'I'đ,μ,Ü,·D

**[CTRL]+[SHIFT]+[ ]**

'Ö,ì'PÆê,đ'I'đ,μ,Ü,·(%op•¶,ìê¶,ì,Ý)D

**[CTRL]+[SHIFT]+[ ]**

ŽŸ,ì'PÆê,đ'I'đ,μ,Ü,·(%op•¶,ìê¶,ì,Ý)D

**[CTRL]+[SHIFT]+[HOME/CLR]**

•¶',ìæ“ª,Ü,ÅfefLfXfg,đ'I'đ,μ,Ü,·D

**[CTRL]+[SHIFT]+[HELP]**

•¶',ìÅÆã,Ü,ÅfefLfXfg,đ'I'đ,μ,Ü,·D

fEfBf"fhfE,ÉŠÖ,.,éfL□[‘€̀ì

fL□[

<@”\

[GRPH]+fXfy□[fXfL□[

fAfvfŠfP□[fVf†f“ fEfBf"fhfE,ìfRf"fgf□□[f< f□fjf...  
□[,đf□[fvf“ ,μ,Û,·□D

[GRPH]+[-]

•¶□‘fEfBf"fhfE,ìfRf"fgf□□[f< f□fjf...

□[,đf□[fvf“ ,μ,Û,·□D

[GRPH]+[f¥4]

fEfBf"fhfE,đfNf□□[fY,μ,Û,·□D

[GRPH]+[ESC]

ŽŸ,ìfAfvfŠfP□[fVf†f“  
fEfBf"fhfE,Û,½,ìfAfCfRf“ (ftf<fXfNfŠ□[f“ fvf□fOf  
%of€,đŠÛ,þ),É□Ø,è‘Ö,!,Û,·□D

[GRPH]+[TAB]

ŽŸ,ìfAfvfŠfP□[fVf†f“  
fEfBf"fhfE,É□Ø,è‘Ö,!,□CfAfCfRf“ ,ÅŽÀ□s,μ,Ä,¢  
,éfAfvfŠfP□[fVf†f“ ,!•œƐ³,μ,Û,·□D

[GRPH]+fŠf^□[f“fL□[

fEfBf"fhfE,Û,½,ìftf<fXfNfŠ□[f“ ,ÅŽÀ□s,μ,Ä,¢  
,é”ñWindowsfAfvfŠfP□[fVf†f“ ŠÔ,đ□Ø,è‘Ö,!,Û,·□D  
fRf“fgf□□[f< f□fjf...

•ûƐüfL□[

□[,ì[ ^Ů“ @ ]fRf}f“fh,đ‘l‘đ,μ,½Ɛã,Å□CfEfBf"fhfE,đ  
^Ů“ @ ,μ,Û,·□D,Û,½,ì□CfRf“fgf□□[f< f□fjf...

□[,ì[ftfCfY•ï□X]fRf}f“fh,đ‘l‘đ,μ,½Ɛã,Å□CfEfBf“  
fhfE,ìfTfCfY,đ•ï□X,μ,Û,·□D





