




Internet fIf"f%fCf"f\ftfgfEfFfA


**POWER REPORT"Á'I 'è"ôIf"f%fCf"f\ftfgfEfFfA**

**Windows95/NT-pf\ftfgfEfFfA**


 Winbiff Ver1.61  


 TakIRC Ver0.86  


 fCf"f^[flfbfgEfZfbfgfAfbfvfc[f< Ver1.13

 Windows Sockets FTP Client Application - WS FTP 4.0

 Wsarch32

 Wintama alpha14

 Tera Term Pro version 2.0 for Windows95/NT

**Windows3.1/95-pf\ftfgfEfFfA**

 TakIRC Ver0.86  




AL-Mail Ver1.31



Winbiff Ver1.24



Tera Term version 1.3 for MS-Windows 3.1

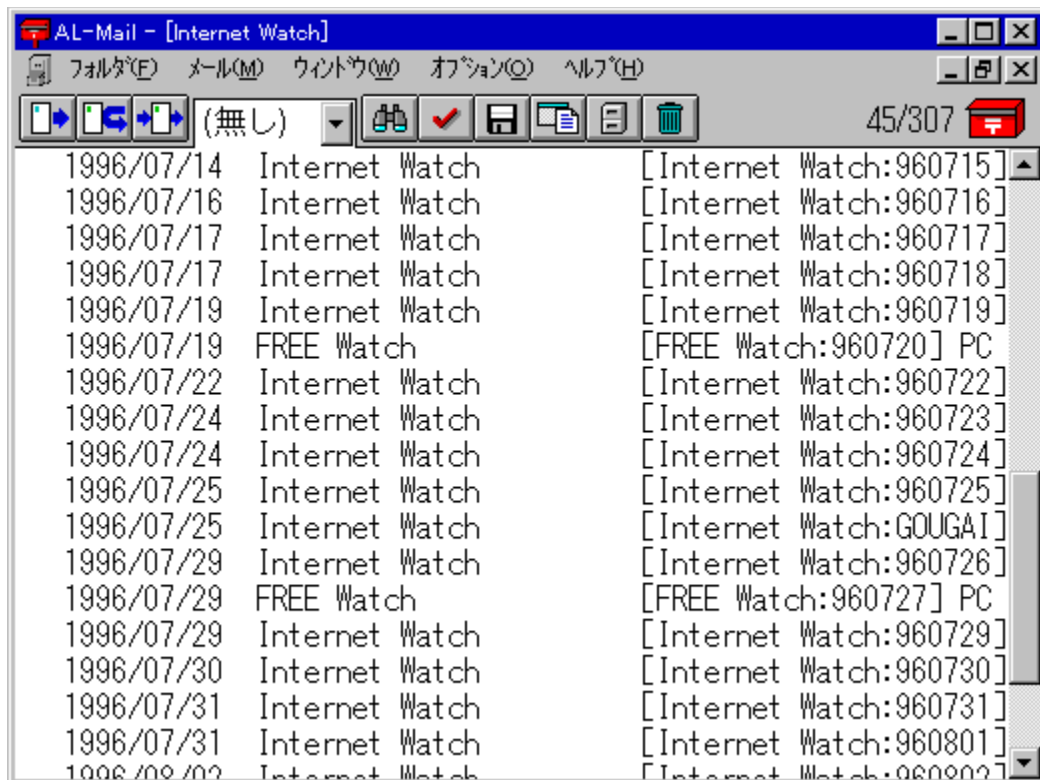


AL-Mail Ver 1.31

インストールの実行



%æ-ÉfCf [fw



Žu~^ffBf@fNfgfŠ DISC1:\OLS\INTERNET\ALM131



□ižò '†'°<šžu□A~a“c ‘ă ž□  
<http://www.imasy.or.jp/~naka/>



“à-e

AL-Mail ,Í Internet -p,Ì“džqf□□[f<fvf□f0f%f€,Å,·□B  
“Á'¥,Æ,μ,Ä,Í...

□E,l,c,hE`Ž®,É,æ,è•i□",İftfHf<f\_,ð“`Žž,É•\Ž|,Å,«,é  
□E,f,t,h,É,æ,éŠÈ'P,È'€□ì•û-@  
□EDrag&Drop ,Åf□□[f<,ð^ú“®,Å,«,é  
□E'Sf□□[f<,İ't,©,çfL□[f□□[fh,ð'T,¹,é<-Í,ÈEÿ□ö<@“\  
□Ef□□[f<□®-□,ªŠÈ'P,Èf□□[f<Ž©“®□U•ª,`<@“\  
□EŠK'w□\`ç,ª%Å“\,È□A<-Í,È□Z□Š~^<@“\,ðfTf|□[fg  
□E•t'®,İ'-□MfGfffBf^^ÈŠO,Å,à□A□GŠÛfGfffBf^“™,©,ç'¼□Ú'-  
□M,ª%Å“\  
□Ef\_fCfAf<fAfbfv□Ú'±,É•Ö-~,Èfİftf%fCf“,Å,İf□□[f<ª  
{—<y,Ñ•Ö□W<@“\  
□EWinsock ,Æ InetBIOS ,İ,QŽí-  
p,İflfbfgf□□[fNfCf“f^□[ftfF□[fX,ðfTf|□[fg  
  
,È,Ç,ª, ,è,Û,•□B  
  
□®□AAL-Mail ,İf□□[f<,İŽó□M,É,Í POP3 ,ð□A'-□M,É,Í SMTP  
,ðŠe□XŽg-p,µ,Û,•□B  
f□fCf<fT□[fo,Æ,È,éfzfXfg,Å,Í□A,±,è,ç,İfT□[fo,ª□³,µ,-  
fCf“fXfg□[f<,³,ê□A“®ì,µ,Ä,ç,é•K-v,ª, ,è,Û,•□B



ftf@fCf<□\□~

ALM131

EXE

742,432

96-11-25

17:08

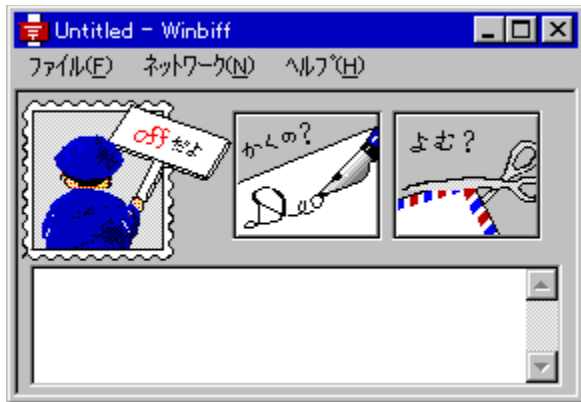


Winbiff Ver1.61

インストールの実行



%æ-ÉfCf [fw



Žû~^ffBfœfNfgfŠ DISC1:\OLS\INTERNET\B32161F



□ižò (Š”)fIfœf“fwf\ftfg  
<http://www.orangesoft.co.jp>



“à-e

□@Winbiff,ÍInternet mail,Ì’-  
Žó□M,ðWindows□ã,Å□s,✕fAfvfŠfP□[fVf‡f“,Å,·□B

[Winbiff,Ì“Á’·]  
□E Windows□ã,Å□AfCf“f^□[flfbfgf□□[f<,ð“Ç,Ý□E□’,«,Å,«,Ü,·□B  
□E ,P’ä,Ìf}fVf“,Å□A·i□”ft□[fU,É,Ä,²~—p,ç,½,¾,¯,Ü,·□B  
□E MIME,É’Î%ž,µ,Ä,¨,è□A“ú—{œê,ÌftfufWfFfNfg,ªŽg—p,Å,«,Ü,·□B  
□E ‘—Žó□M,İŠ¿ŽšfR□[fh,ÍJIS/SJIS/EUC,İ3Ží—p,ðŽg—p,·,é,±  
,Æ,ª,Å,«,Ü,·□BŽó□MŽž,İŠ¿ŽšfR□[fh,ðŽ©“@”»•Ê,·,é,±  
,Æ,ª,Å,«,Ü,·□B

□E f□□[f<,ÍftfufWfFfNfg/Žž□□/’—□MŽò•Ê,Éf\□[fg,·,é,±  
,Æ,ª,Å,«,Ü,·□B

ftfHf<f\_œ,öfTf|f[fg,µ,Ä,ç,Ü,·B  
fofCfifŠftf@fCf<,I“Y•t,à%Ä”\  
,Å,·BfofCfifŠff[f^,İ•İŠ·,ÍMIME,Binhex4.0,uuencode,É‘Î  
ž,µ,Ä,“,èA¼,ÌUNIX,âMacintosh™,İff[f<fŠ[f\_,Æ,İff[f^œ  
Š·,à%Ä”\,Å,·B



**ftf@fCf<\-**

B32161F      EXE                      2,087,185      96-12-26      20:39

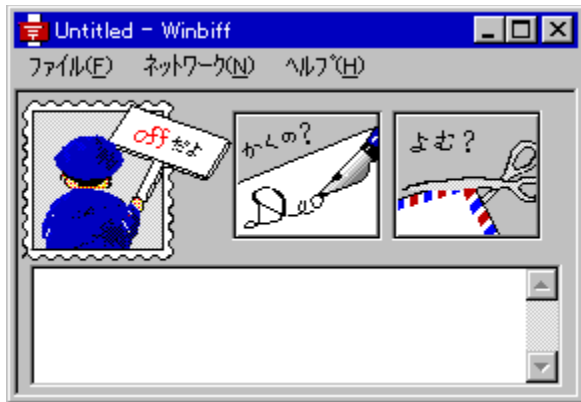


Winbiff Ver1.24

インストールの実行



%æ-ÉfCf[]fW



Žû~^ffBfœfNfgfŠ DISC1:\OLS\INTERNET\B16124



□ižò (Š”)fIfœf“fWf\ftfg  
<http://www.orangesoft.co.jp>



“à-e

□@Winbiff,ÍInternet mail,Ì’-  
Žó□M,ðWindows□ã,Å□s,✖fAfvfŠfP□[fVf‡f“,Å,·□B

[Winbiff,Ì“Á’·]  
□E Windows□ã,Å□Afcf“f^□[flfbfgf□□[f<,ð“Ç,Ý□E□’,«,Å,«,Ü,·□B  
□E ,P’ä,Ìf}fVf“,Å□A•i□”ft□[fU,É,Ä,²~—p,ç,½,¾,¯,Ü,·□B  
□E MIME,É’Î%ž,µ,Ä,¨,è□A“ú—{œê,ÌftfufWfFfNfg,ªŽg—p,Å,«,Ü,·□B  
□E ‘—Žó□M,İŠ¿ŽšfR□[fh,ÍJIS/SJIS/EUC,İ3Ží—p,ðŽg—p,·,é,±  
,Æ,ª,Å,«,Ü,·□BŽó□MŽž,İŠ¿ŽšfR□[fh,ðŽ©“@”»•Ê,·,é,±  
,Æ,ª,Å,«,Ü,·□B

□E f□□[f<,ÍftfufWfFfNfg/Žž□□/’—□MŽò•Ê,Éf\□[fg,·,é,±  
,Æ,ª,Å,«,Ü,·□B

ftfHf<f\_ŒŸö,öfTf| [fg,µ,Ä,ç,Ü, ·B  
fofCfifŠftf@fCf<,I“Y•t,à%Ä”\  
,Å, ·BfofCfifŠff [f^, Ì•İŠ·, ÍMIME, Binhex4.0, uuencode, É‘Î  
ž, µ, Ä, “, èA‘¼, ÌUNIX, âMacintosh“™, Ìf [f<fŠ [f\_, Æ, Ìff [f^Œö  
Š·, à%Ä”\, Å, ·B



ftf@fCf< \ -

B16124          EXE                      584,139          96-08-01          20:20  
ŽÀ sftf@fCf<





Ver1.13

インストールの実行



接続先と接続装置の選択

接続するプロバイダと接続装置を選択してください

プロバイダ名/アクセスポイント(P):

[03] NIFTY-HyperRoad\_東京E

NIFTY-Serveの高速インターネット接続サービスです。ユーザ名として「NIM-〈NIFTY-Serveユーザ名〉」を入れてください。例えば「NIM-ABC01234」といったように。パスワードはNIFTY-Serveのものと同じです。

接続に使用する装置(M) SUNTAC MS288AF,EF

< 戻る(B)      次へ (N)>      キャンセル      ヘルプ(H)



接続先: DISC1:\OLS\INTERNET\PPPST113



接続先: (S) http://www.netvision.co.jp/



接続先: a-e

f\_fCfAf<fAfbfv,©,çfCf“f^[]flfbfg,ÉÚ‘±  
 ,. ,éSÅ<<,đŽ©“@“I,É[]ì[]-,μ,Ü,·[]B  
 Šî-{f\  
 ftfgfEfGfA,ìfCf“fXfg[]f<,©,ç[]AWindows95,ì[]Ý’è[]ANetScape[]AIn  
 ternetExplorer,Æ,ç  
 ,Á,½fAfvfŠfP[]fVf#f“,ì[]Ý’è,Ü,Å‘[],ÄŽ©“@“I,É[]s,ç,Ü,·[]B

ft□[fU,Í□Afvf□fofCf\_□[□i,`,o□j,ì'I'ð□A,h,c×fpfXf□□[fh,Ì□Ý'è  
,ð□s,×,ì,Ý,Å,·□B

DNS,f□□[f<ft□[fo□[“™,ì□î•ñ,í“à•”,ÉŽ□,Á,Ä,ç  
,Ü,·,ì,Å□Afvf□fofCf\_□[,ð'I'ð,ç  
,½,¾,¯,ê,ÎŽ“®“I,É□Ý'è,³,ê,Ü,·□B

f,fff€,ª•;□“□A□Ý'è,³,ê,Ä,ç,é□ê□‡,Í,»,ê,ç,Ì,ç,.,ê,ðŽg,×  
,©,ì'I'ð,ª•K-v,Å,·□B

f\_fCfAf<fAfbfv,Ìf\ftfg,ªfCf“fXfg□[f<,³,ê,Ä,ç  
,È,ç□ê□‡□A,±,Ìf\  
ftfgŽÀ□sŽž,Éf\_fCfAf□f0,ìŽwŽ!,ÅWindows95,ìŠî-{fvfXfef€(CD-  
ROM“™□j,ð,©,¯,éŽwŽ!,ª□o,Ü,·□B, ,ç,©,¶,ß,²-p^Ó,-  
,¾,³,ç□BŽwŽ!,É,µ,½,ª,Á,Ä,©,¯,é,¾,¯,Å,·,ì,Å□A“Á,É“i,µ,,Í, ,è  
,Ü,¹,ñ□B

NetScape“™,ì'®□«,ð□Ý'è,·,é□ê□‡,Í□A,±,Ìf\  
ftfg,ìŽÀ□s'0,É,»,ê,ç,Ìf\ftfgfEfGfA,ðfCf“fXfg□[f<,µ,Ä,“,•K-  
v,ª, ,è,Ü,·□B

Ⓔ»Ý□A^È%º,Ìfvf□fofCf\_□[,ª'I'ð,Å,«,Ü,·□B

NIFTY-Serve Road4,Hyper Road  
•{'tfcf“f^□[flfbfg  
Internet\_Gardencity  
flfbfgf%fsf...f^  
,ì,á,ì,µ,çflfbfg  
,m,l,sflfbfg  
infoNia  
fRfyf<fjfnfX  
flfbfgfrfWf‡f“□EfCf“f^□[flfbfgfT□[frfX



ftf@fcf<□\□~

PPPST113 EXE

180,730

96-11-09

1:35

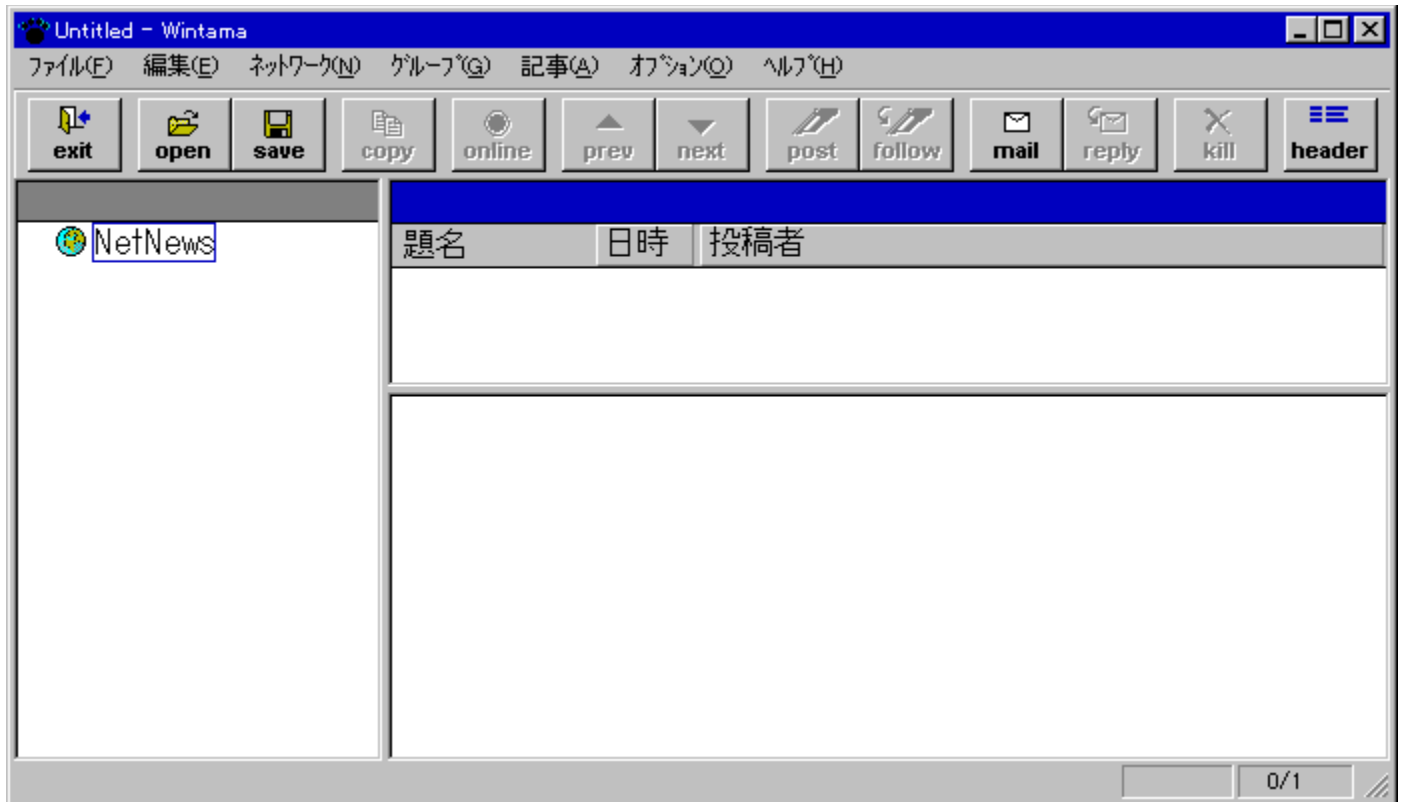


Wintama alpha14

インストールの実行



%æ-ÉfCf[]fW



Žû~^ffBf@fNfgfŠ DISC1:\OLS\INTERNET\TAMA014F



□ižò (š")fIf@f"fWf\ftfg  
<http://www.orangesoft.co.jp>



"à-e

Wintama, ÍNetNews, ð"Ç, Ý□', «, ·, é, ½, ß, Ìfjf...□[fXfŠ□[f\_□[, Å, ·□B  
, ±, Ìfo□[fWf±f", Í□AfAf<ftf@fo□[fWf±f", Æ, ç, ¨, ±, Æ, Å'½, , Ì

<@”\, a-čŽÀ’•, Å, ., aASî-{"I, Èfj f... [fX, Ì“Ç, Ý□’, «, Í%Â”\, Æ, È, Á  
, Ä, ç, Ü, ·□B  
, ±  
, ÌfAf<ftf@fefXfg, Å, Ìft□[fU□[, Ì, Ý, È, ³, ñ, Ì^Óœ©, ðŽQ□l, É□A, æ, è  
, æ, çf\ftfg, ð□ì, Á, Ä, ç, «, ½, ç, Æ□l, ¡, Ä, ç, Ü, ·□B, ²<|-Í, ð, Šè, ç, ç  
, ½  
, μ, Ü, ·□B



ftf@fCf<□\□~

TAMA014F EXE

1,993,388

96-07-10

2:55

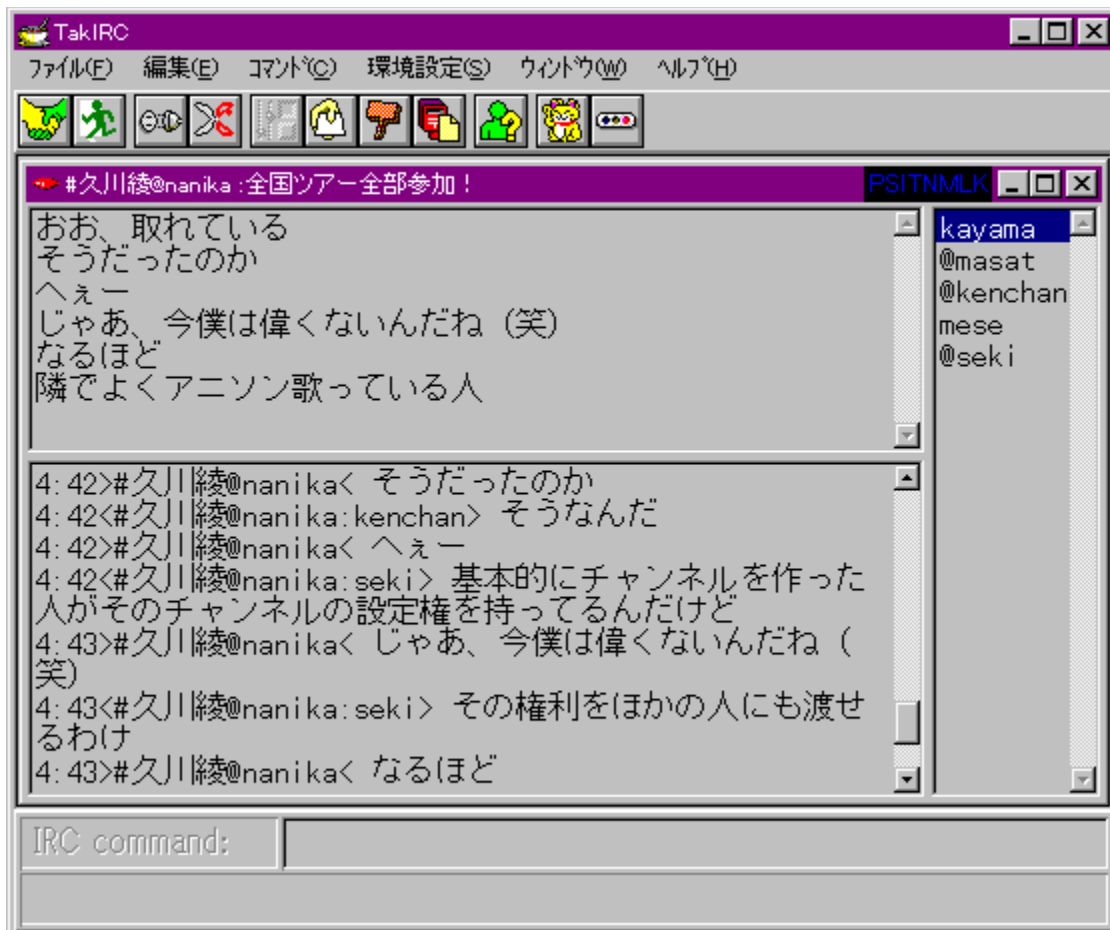


TakIRC Ver0.86

インストールの実行



%æ-ÉfCf[] [fW



Žû~^ffBf@fNfgfš

DISC1:\OLS\INTERNET\TIRC1686



□iž0 'ë %ë□b ž□

<http://www.bekkoame.or.jp/~takkey/TakIRCSup/TakIRC1.html>



“à-e

@TakIRC i^È~u-{f\ftfgv[]j,Í[]AInternet Relay  
 Chat[]iIRC[]j,Ì,½,ß,ÌWindows-pfNf%fcfAf“fgf\ftfg,Å,·[]BWindows  
 -p,ÌIRC-pfNf%fcfAf“fgf\ftfg,É,Í irc for  
 Windows,È,Ç,ª, ,è,Ü,·,ª[]A,È,º,©Windows-p,Å“ú-{Æê,ÉŠ®‘S‘Î  
 %ž,µ,Ä,ç,éfNf%fcfAf“fgf\ftfg,Í[]i[]ižÒ,Ì‘m,é,©,-,è[]j”ñ[]í,É[]-  
 ,È,ç,æ,ª,Å,·[]B,» ,ê,È,ç,Î,Æ[]\$[]ì,µ,Ä,Ý,½,Ì,ª-{f\ftfg,Æ,ç,ª  
 ,í,¯,Å,·[]B  
 @“ú-{,ÅIRC,ð,·,é,æ,ª,È[]l,Í,½,ç  
 ,Ä,ç[]i,Ü,Æ,ñ,Ç[]H[]jUNIXŠÅ<<,ð,à,Á,Ä,ç  
 ,é,û[]X,Î,©,è,Å[]i[]XWindows,à,È,ç,Æ,Ížv,ç  
 ,Ü,·,ª(^;[]AWindowsft[][fU,Å[]A,±,è,©,çIRC,ð~~p,µ,Ä,Ý,½,ç  
 ,Æžv,í,ê,é,û[]X,Í[]¥”ñ-{f\ftfg,ðžž,µ,Ä,Ý,Ä,¾,¾,ç :-)[]B  
  
 -{f\ftfg,Í^È%º,Ì“Á’·,ð”ð,|,Ä,ç,Ü,·[]B  
 ,P[]j,“ÆÝ,ç,Éfšf“fN,µ, ,Á,Ä,ç  
 ,È,ç·i[]”,ÌfT[][fo,É“-žž,É[]Ú‘±,ª,Å,« ,é[]i‘A,µ,T,Å  
 ,Ü,Å[]j[]B  
 ,Q[]j[]f[]f0,ð,Æ,é,±,Æ,ª%Å”\[]i“Á,É32frfbfg”Å,Íf`ffflf<-  
 ^,Éf[]f0,ª,Æ,è,Ü,·[]j[]B  
 ,R[]j,æ,žg,ªIRCfRf}f“fh,ðf\_fcFaf[]f0  
 %»[]B,Ü,½IRCfRf}f“fh,à’¼[]Ú“ü-Í%Å”\[]B  
  
 []|’[]F[]uTakIRC[]v,ðžg-p,¾,è,½,±,Æ,Å  
 %½,©‘¹ŠQ,ð”í,Á,½,Æ,µ,Ä,à[]ižÒ,Í%½,Ì[]Ó”C,à  
 ž,Ä,Ü,¹,ñ  
  
 ,È,“[]A,±,Ìf\ftfg,Ì[]Å[]V”Å,ª^È%º,Ì[]ê[]Š,ÉfAfbfv,¾,è,Ä,ç,Ü,·[]B  
 NIFTY-Serve FINETAP LIB 1  
 ftp://ftp.kyoto.wide.ad.jp/IRC/misc



ftf@fcf<[]\[]~

TIRC1686 LZH 132,232 96-12-24 17:59

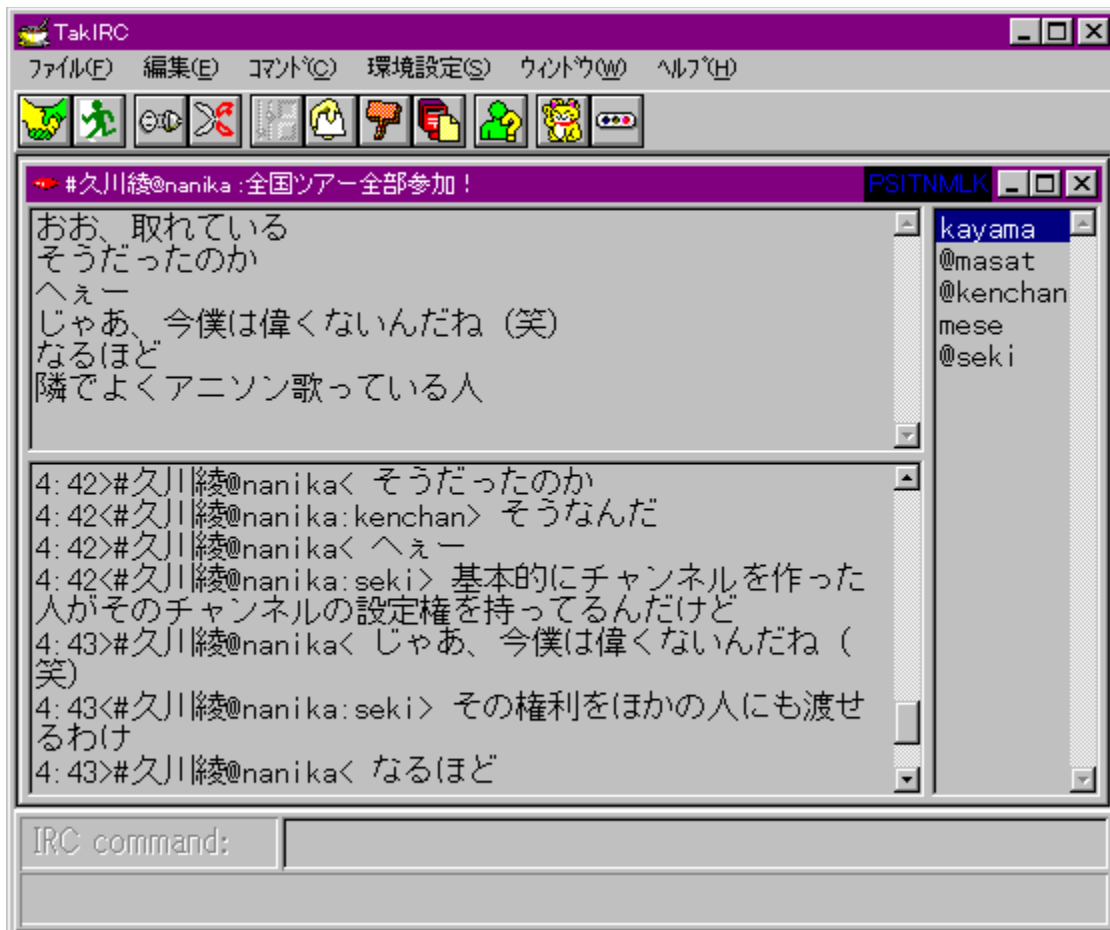


TakIRC Ver0.86

インストールの実行



%æ-ÉfCf[] [fW



Žû~^ffBf@fNfgfš

DISC1:\OLS\INTERNET\TIRC3286



[]iž0 'ë %ë[]b ž[]

<http://www.bekkoame.or.jp/~takkey/TakIRCSup/TakIRC1.html>



“à-e

@TakIRC i^È~u-{f\ftfgv[]j,Í[]AInternet Relay  
 Chat[]iIRC[]j,Ì,½,ß,ÌWindows-pfNf%fcfAf“fgf\ftfg,Å,·[]BWindows  
 -p,ÌIRC-pfNf%fcfAf“fgf\ftfg,É,Í irc for  
 Windows,È,Ç,ª, ,è,Ü,·,ª[]A,È,º,©Windows-p,Å“ú-{Æê,ÉŠ®‘S‘Î  
 %ž,µ,Ä,ç,éfNf%fcfAf“fgf\ftfg,Í[]i[]ižÒ,Ì‘m,é,©,-,è[]j”ñ[]í,É[]-  
 ,È,ç,æ,ª,Å,·[]B,» ,ê,È,ç,Î,Æ[]\$[]ì,µ,Ä,Ý,½,Ì,ª-{f\ftfg,Æ,ç,ª  
 ,í,¯,Å,·[]B  
 @“ú-{,ÅIRC,ð,·,é,æ,ª,È[]l,Í,½,ç  
 ,Ä,ç[]i,Ü,Æ,ñ,Ç[]H[]jUNIXŠÅ<<,ð,à,Á,Ä,ç  
 ,é,û[]X,Î,©,è,Å[]i[]XWindows,à,È,ç,Æ,Ížv,ç  
 ,Ü,·,ª(^;[]AWindowsft[][fU,Å[]A,±,è,©,çIRC,ð~-p,µ,Ä,Ý,½,ç  
 ,Æžv,í,ê,é,û[]X,Í[]¥”ñ-{f\ftfg,ðžž,µ,Ä,Ý,Ä,,¾,¾,ç :-)[]B  
  
 -{f\ftfg,Í^È%º,Ì“Á’·,ð”ð,|,Ä,ç,Ü,·[]B  
 ,P[]j,“ÆÝ,ç,Éfšf“fN,µ, ,Á,Ä,ç  
 ,È,ç·i[]”,ÌfT[][fo,É“-žž,É[]Ú‘±,ª,Å,« ,é[]i‘A,µ,T,Å  
 ,Ü,Å[]j[]B  
 ,Q[]j[]f[]f0,ð,Æ,é,±,Æ,ª%Å”\[]i“Á,É32frfbfg”Å,Íf`ffflf<-  
 ^,Éf[]f0,ª,Æ,è,Ü,·[]j[]B  
 ,R[]j,æ,žg,ªIRCfRf}f“fh,ðf\_fcFfA[]f0  
 %»[]B,Ü,½IRCfRf}f“fh,à’¼[]Ú“ü-Í%Å”\[]B  
  
 []|’[]F[]uTakIRC[]v,ðžg-p,¾,è,½,±,Æ,Å  
 %½,©‘¹ŠQ,ð”í,Á,½,Æ,µ,Ä,à[]ižÒ,Í%½,Ì[]Ó”C,à  
 ž,Ä,Ü,¹,ñ  
  
 ,È,“[]A,±,Ìf\ftfg,Ì[]Å[]V”Å,ª^È%º,Ì[]ê[]Š,ÉfAfbfv,¾,è,Ä,ç,Ü,·[]B  
 NIFTY-Serve FINETAP LIB 1  
 ftp://ftp.kyoto.wide.ad.jp/IRC/misc



ftf@fCf<[]\[]~

TIRC3286 LZH 163,401 96-12-24 18:05



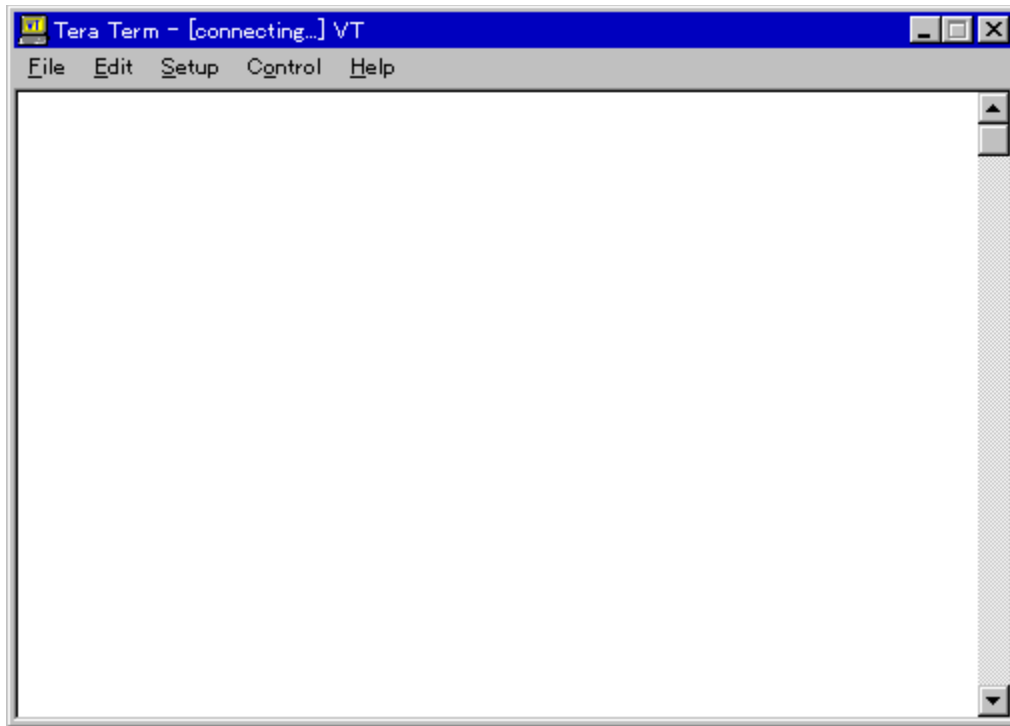


Tera Term Pro version 2.0

インストールの実行



%æ-ÉfCf[]fW



Žû~^ffBfCfNfgfŠ DISC1:\OLS\INTERNET\TTERMP20



[]iž0 T. Teranishi Ž[]

ftp://riksun.riken.go.jp/pub/pc/misc/terminal/teraterm/



“à-e

Tera Term (Pro) ,ÍftfŠ[]f\ftfgfEfFfA,Ìf^[]f~fif<fGf~f...  
fC[]f^[]  
( 'É[]Mfvf[]f0f%f€), Å[]A^È%º, Ì“Á'¥, ðŽ[], Á, Ä, ç, Ü, ·[]B

□EfvfŠfAf<f|□[fg□Ú'±  
 □ETCP/IP (telnet) □Ú'±  
 □E"ú- {Æê'Î%ž  
 □E%pÆ Windows ,É'Î%ž,μ,½%pÆêf,□[fh  
 □EVT100 '[—,ÏfGf~f...f□[fvf#f“(,“,æ,Ñ□AVT200, 300 ,î^ê•”)  
 □ETEK4010 '[—,ÏfGf~f...f□[fvf#f”  
 □Eftf@fCf<“]’-fvf□fgfRf< (Kermit, XMODEM, ZMODEM, B-PLUS,  
 Quick-VAN)  
 □Ef}fNf□Æ¼Æê,É,æ,éŽ©“@%^“]



### ftf@fCf<□\□-

README	TXT	6,344	96-06-07	
8:00	□à-¾ftf@fCf<			
READMEJ	TXT	7,578	96-06-07	8:00
□à-¾ftf@fCf<				
CMNDLINE	TXT	1,690	96-06-07	8:00
□à-¾ftf@fCf<				
TTERMPRO	EXE	492,032	96-06-07	8:00
ŽÀ□sftf@fCf<				
TSPECIAL	TTF	129,132	95-07-03	8:00
TTPCMN	DLL	21,504	96-06-07	8:00
TTPDLG	DLL	40,448	96-06-07	8:00
TTPFILE	DLL	71,680	96-06-07	8:00
TTPSET	DLL	40,448	96-06-07	8:00
TTPTEK	DLL	33,280	96-06-07	8:00
TTERMP	HLP	46,687	96-06-07	8:00
Windowsfwf<fvftf@fCf<				
TTERMPJ	HLP	81,048	96-06-07	8:00
Windowsfwf<fvftf@fCf<				
TERATERM	INI	3,177	96-06-07	8:00
IBMKEYB	CNF	1,778	96-06-07	8:00
PC98KEYB	CNF	1,784	96-06-07	8:00
NT98KEYB	CNF	1,789	96-06-07	8:00
KEYCODE	EXE	16,384	95-12-18	12:00
ŽÀ□sftf@fCf<				
KEYCODE	TXT	5,690	96-06-07	8:00
□à-¾ftf@fCf<				
TTMACRO	EXE	54,784	96-06-07	8:00
ŽÀ□sftf@fCf<				
KEYCODEJ	TXT	6,152	96-06-07	8:00
□à-¾ftf@fCf<				
TTMACRO	TXT	37,733	96-06-07	8:00
□à-¾ftf@fCf<				

<u>TTMACROJ TXT</u>		<u>36,095</u>	<u>96-06-07</u>	<u>8:00</u>
□à-¾ftf@fCf<				
DIALUP	TTL	1,064	95-12-18	12:00
LOGIN	TTL	408	95-12-18	
12:00				

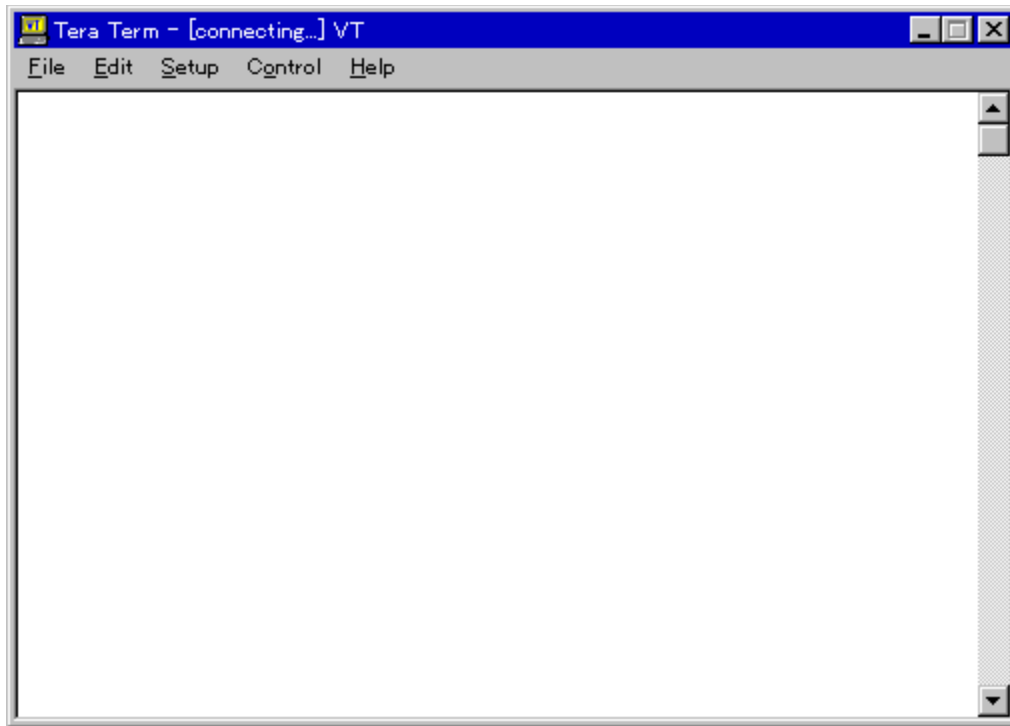


Tera Term version 1.3 for MS-Windows 3.1

インストールの実行



インストールの実行



インストールディレクトリ: DISC1:\OLS\INTERNET\TTERMV13



インストール者: T. Teranishi

インストール場所: ftp://riksun.riken.go.jp/pub/pc/misc/terminal/teraterm/



インストール説明

Tera Term は、IBM PC/AT 互換機上で動作するターミナルエミュレータです。インストールには、インストールディレクトリに移動し、Tera Term.exe を実行してください。

□EfvfŠfAf<f|□[fg□Ú'±  
 □ETCP/IP (telnet) □Ú'±  
 □E"ú-{Œê'Î%Ž  
 □E%pŒê Windows ,É'Î%Ž,μ,½%pŒêf,□[fh  
 □EVT100 '[—,ÏfGf~f...fŒ□[fvf#f“(,“,æ,Ñ□AVT200, 300 ,î^ê•”)  
 □ETEK4010 '[—,ÏfGf~f...fŒ□[fvf#f“  
 □Eftf@fCf<“]’-fvf□fgfRf< (Kermit, XMODEM, ZMODEM, B-PLUS,  
 Quick-VAN)  
 □Ef}fNf□Œ¼Œê,É,æ,éŽ©“@%^“]



## ftf@fCf<□\□~

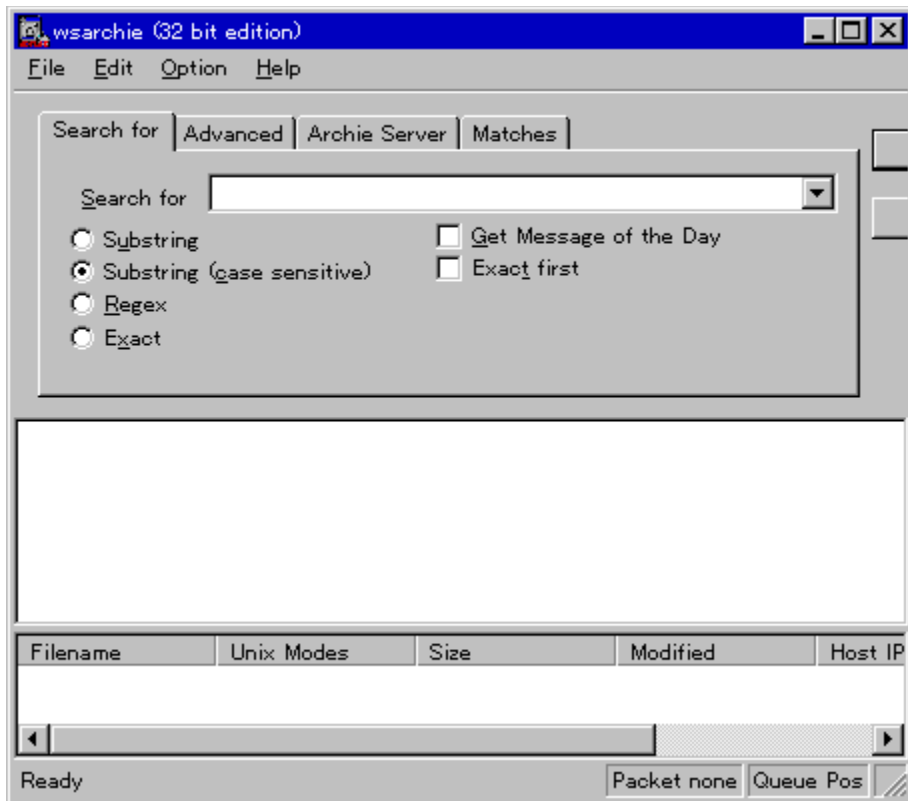
README	TXT	5,688	96-06-07	
8:00	□à-¾ftf@fCf<			
READMEJ	TXT	7,186	96-06-07	8:00
□à-¾ftf@fCf<				
CMNDLINE	TXT	1,674	96-06-07	8:00
□à-¾ftf@fCf<				
TERATERM	EXE	121,856	96-06-07	8:00
ŽÀ□sftf@fCf<				
TTCMN	DLL	15,616	96-06-07	
8:00				
TTDLG	DLL	31,232	96-06-07	
8:00				
TTFILE	DLL	61,696	96-06-07	8:00
TTSET	DLL	25,344	96-06-07	
8:00				
TTTEK	DLL	22,784	96-06-07	
8:00				
TSPECIAL	TTF	129,132	95-07-03	8:00
TTERM	HLP	46,736	96-06-07	
8:00	Windowsfwf<fvftf@fCf<			
TTERMJ	HLP	81,067	96-06-07	8:00
Windowsfwf<fvftf@fCf<				
TERATERM	INI	3,175	96-06-07	8:00
IBMKEYB	CNF	1,778	96-06-07	8:00
PC98KEYB	CNF	1,785	96-06-07	8:00
KEYCODE	EXE	16,384	95-12-18	12:00
ŽÀ□sftf@fCf<				
KEYCODE	TXT	5,690	96-06-07	8:00
□à-¾ftf@fCf<				
KEYCODEJ	TXT	6,152	96-06-07	8:00
□à-¾ftf@fCf<				
TTMACRO	EXE	54,784	96-06-07	8:00
ŽÀ□sftf@fCf<				

<u>TTMACRO</u>	<u>TXT</u>	<u>37,733</u>	<u>96-06-07</u>	<u>8:00</u>
□à-¾ftf@fCf<				
<u>TTMACROJ</u>	<u>TXT</u>	<u>36,095</u>	<u>96-06-07</u>	<u>8:00</u>
□à-¾ftf@fCf<				
DIALUP	TTL	1,064	95-12-18	12:00
LOGIN	TTL	408	95-12-18	
12:00				

 WSARCH32



%æ-ÉfCf[] [fW



Žû~^ffBf@fnfgfš DISC1:\OLS\INTERNET\WSARCH32



[]ižò David Woakes ž[]  
<http://dSPACE.dial.pipex.com/david.woakes/>



“à-e

[]@ArchiefT[] [fo[] [,É[]Ú‘±,µ•i[]”,İFTPfT[] [fo[] [,©,ç•K-  
v,Éftf@fCf<,ðÆÿ[]ö,.,éfc[] [f<[]BWS\_ARCHIE,Í[]Å[]%,©,çŠe[]’,İŽâ-  
v,ÈARCHIEfT[] [fo[] [,a“o~^,³,ê,Ä,ç

, é□B, Ü, ½□AWS\_FTP, Æ, Ì~AÆg, Å'T, μ□o, μ, ½ftf@fCf<, ð, ·, ®, É“]‘–  
, ·, é, ±, Æ, ²□o–^, é□B



### ftf@fCf<□\□–

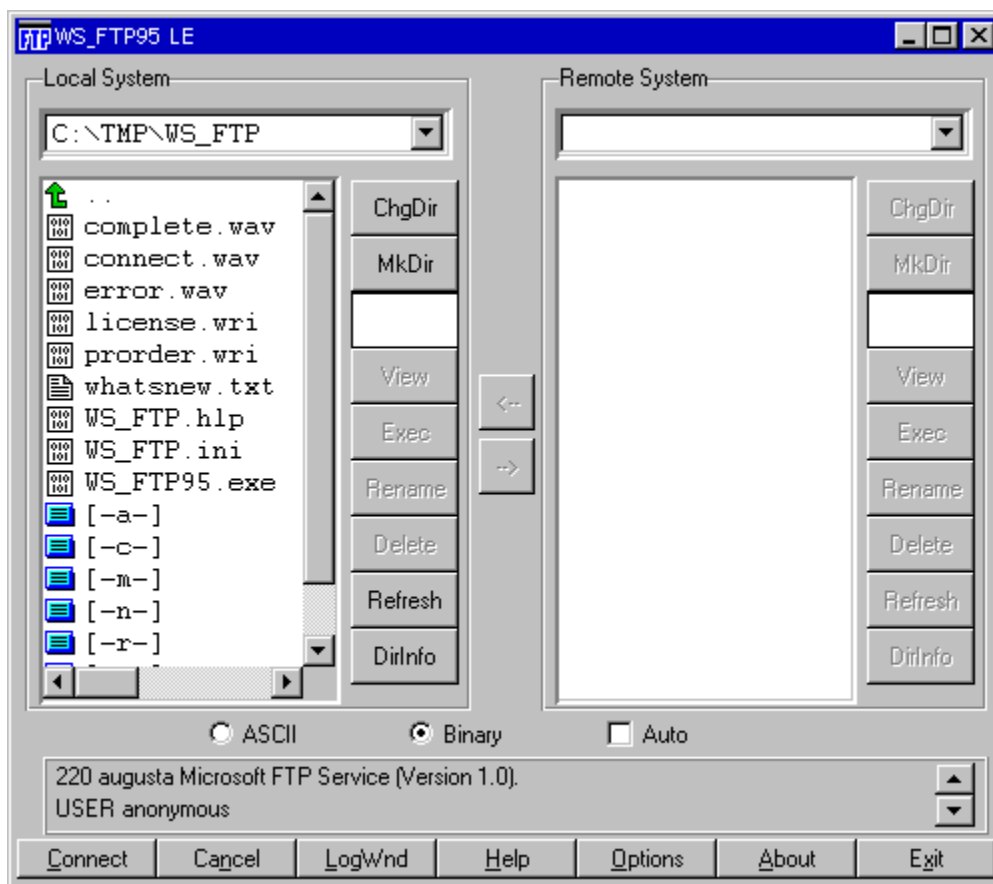
WSARCH32 ZIP	225,939	96-08-01	19:39
WSARCH32 EXE	391,680	96-07-09	23:12
ŽÀ□sftf@fCf<			
WSARCH32 HLP	62,758	96-07-09	23:26
Windowsfwf<fvftf@fCf<			
WSARCH32 TXT	12,660	96-04-29	22:18 □à–
¾ftf@fCf<			



Windows Sockets FTP Client Application - WS\_FTP  
4.0



æ-ÊfCf[]fW



Žû~^ffBf@fNfgfš DISC1:\OLS\INTERNET\WS\_FTP32



ìžò John A. Junod Ž  
<http://www.ipswitch.com/>



“à-e

fCf“f^[]f\fbfg[]ã,Åftf@fCf<“]‘-  
,ð□s,¼fc[]f<□BWindows95,É,Í•W□€,ÅFTPfNf%fcfAf“fg,a, ,é,ª□AW  
S\_ FTP,ÍfOf%ftfBfJf<,Èft+[]fU[]fCf“f^[]ftfF[]fX,ð”ö,!,Ä,ç  
,é□BWindows[]ã,Å,ÌFTPfNf%fcfAf“fg,Æ,µ,Ä,Ù,ÚfXf^f“f\_[]fh,Æ,ç  
,!,é□B



**ftf@fCf<[]\□-**

WS_FTP32	ZIP	480,222	96-08-01	19:32
ERROR	WA_	9,996	95-04-10	
21:30				
COMPLETE	WA_	12,106	95-07-13	23:00
CONNECT	WA_	14,354	95-08-19	8:33
COMMON	TXT	4,404	96-04-23	13:42
<hr/>				
à-¾ftf@fCf<				
INST32	EXE	119,296	96-06-03	16:13
ŽÀ□sftf@fCf<				
INSTALL	EXE	75,200	96-06-03	16:14
ŽÀ□sftf@fCf<				
LICENSE	WRI	7,680	96-05-05	21:43
PRORDER	WRI	4,736	96-05-30	9:50
WHATSNEW	TXT	10,196	96-06-03	16:28 □à-
<hr/>				
¾ftf@fCf<				
WS_FTP	EX_	218,336	96-06-03	15:31
WS_FTP	HL_	48,020	96-05-14	16:20
WS_FTP	IN_	1,852	96-06-03	15:16
WS_FTP	TXT	6,557	96-05-14	15:19
WS_FTP32	EX_	286,208	96-06-03	15:10
WS_FTP95	EX_	316,928	96-06-03	15:46



