

*The easiest way to a connected world*



# OS/2 Warp 4

---

## Highlights

---



- **Includes VoiceType™ for OS/2® Warp speech recognition**
- **Internet-aware desktop, plus the new OS/2 WarpCenter**
- **Universal network client with unmatched connectivity**
- **Exceptional systems management, including DMI support**
- **Runs DOS, Windows,®<sup>1</sup> OS/2 and Java™.<sup>2</sup> applications**
- **OS/2 Crash Protection™ for business-critical applications**
- **True multitasking and multithreading**
- **Exceptional ease of use**
- **Broad compatibility, plus TrueType, OpenGL,™ OpenDoc for OS/2, Open32, and Plug and Play**
- **BonusPak applications to make you instantly productive**



*Introducing OS/2 Warp 4<sup>3</sup>, the operating system solution that puts it all together, here and now: Connectivity for today's networked world...the stability and compatibility you need to run your business...manageability that can significantly reduce cost of ownership...real multitasking for greater productivity...plus the easiest, most fun way for people to work.*

Whether you're looking for a strategic platform that will carry your business into the future, or the easiest way to launch yourself into cyberspace, OS/2 Warp 4 can take you there. We've combined office, Internet and remote network access with the industrial-strength stability and power required for demanding business environments. And while we were at it, we made computing easier than ever, too.

Because when it comes right down to it, people really just want two things from a computing environment. Rock-solid dependability. And a simpler way to work, no matter what that entails—from day-to-day desktop tasks to managing complex multivendor networks with many hundreds of clients and users. So when stability and productivity are critical, choose OS/2 Warp 4—the one operating system solution that gives you the best of both...and a whole lot more...all in an easy-to-install, "one box" solution.



*Whether you're exploring the Web or collaborating across your LAN, OS/2 Warp 4 can connect you to anywhere...from anywhere.*

## Are you talking to your computer yet?

OS/2 Warp 4 brings you into the next generation of computing... by voice. Now, checking out your favorite Web site, launching programs—even dictating memos, e-mail notes or reports—is as simple as talking to your computer.

Just say the words “Jump to Lotus Home Page,” for example, and



OS/2 Warp will take it from there. The power of speech in OS/2 Warp 4 comes from the world's leading voice recognition technology: IBM VoiceType. Included is a completely speech-aware desktop, speech-enabling of OS/2 applications, and the fastest, most accurate dictation system in the industry. Now that's value!

## Network-ready, right out of the box

OS/2 Warp 4 is the premiere network client operating system solution for companies of all sizes, and for people who want to stay connected from anywhere. This means you can standardize on one operating environment and meet the wide range of networking requirements throughout your organization.

The productivity gains and cost savings alone that you can realize by having to support only one workstation environment can justify making the switch. Plus, OS/2 Warp 4's peer capability gives departmental workgroups and small businesses an inexpensive, easy way to share resources such as files, printers, and modems.

## Your fast track to the Internet

Combining a built-in Web browser and object-oriented technology, OS/2 Warp 4 makes getting onto the Internet easier than ever before. In fact, your Internet-aware desktop becomes the ultimate browser, putting you a voice

command or a double-click away from your favorite Web sites, Web pages you've downloaded, or Java applications. You can also click on a desktop folder to view documents listed on a File Transfer Protocol (FTP) server on the Internet... or turn your PC into an FTP server and make information readily available to others.

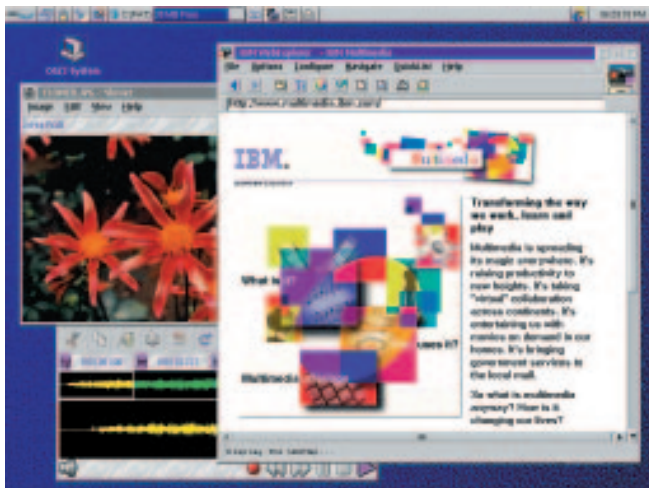
## More Java, anyone?

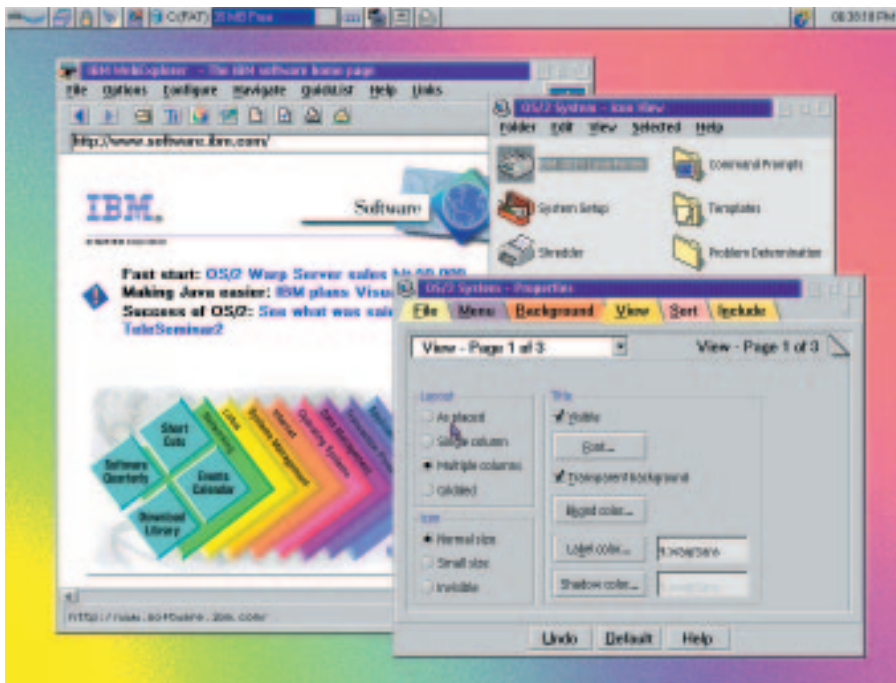
Taking Internet-ability one step further, OS/2 Warp 4 includes support for Sun™ Microsystems' Java<sup>2</sup> technology. Now you can run Java applications natively, without using your browser—and benefit from the full integrity, reliability and security of the operating system.



We've even included a Java Developers Kit that can help you develop your own Java applets quickly and easily.

*With the OS/2 Warp Workplace Shell<sup>®</sup>, it's easy to organize your work, find what you're looking for, launch your programs and make your connections. Plus, OS/2 Warp 4 is multimedia ready—you can play audio files, display graphics, even play MPEG videos.*





Enhancements to the OS/2 Warp user interface include tabbed organizers that you can customize to your preferences. Want to see more? Visit our home page on the World Wide Web.

### **The right choice for the enterprise: Manageable, secure and open**

From clients to notebooks, OS/2 Warp 4 delivers the features that enterprise customers need most. Thanks to integrated support for Desktop Management Interface (DMI) and TME 10 NetFinity™ –the industry’s premiere network asset and systems management tool—you can minimize downtime by detecting and resolving problems *before* they occur. You can put security controls in place to protect valuable corporate assets. And you can run the applications that best meet your needs—DOS, Windows, OS/2 and Java—all in a single environment. Plus, OS/2 Warp 4 supports a broad range of industry standards for today and tomorrow, including TrueType fonts, Plug and Play, SNMP, OpenGL 3D graphics, Open32, and OpenDoc for OS/2.

### **Work productively wherever you go**

You don’t have to stay at the office to stay in touch. With OS/2 Warp 4 Remote Access Services, telecommuters and mobile workers alike can connect to network resources from anywhere and work as if they were at their desks. Mobile Office Services can automatically update shared files anytime users log back on to a server. Plus, OS/2 Warp makes life a little easier for notebook users, with Advanced Power Management support, Plug and Play for most of today’s PCMCIA cards, and a new desktop font designed for readability on mobile computer screens.

### **OS/2: Home is where the hard drive is**

Whether you work on your home PC or on a notebook computer—or use OS/2 primarily for recreation and personal business—life will be a lot simpler with only one operating system to learn and use. The good news is that OS/2 Warp 4 makes itself at home anywhere. You can enjoy hassle-free, Net surfing, simple connectivity to online services—and plenty of games and other software written especially for OS/2.

### **Applause, applause!**

Industry experts and the media consistently rate OS/2 as the technologically superior 32-bit PC operating system. More important to us is what our customers think. That’s why we were particularly proud to receive the 1996 *InfoWorld Overall Readers’ Choice Product of the Year* award for the *fourth* consecutive year. . . this time, *after* the release of Windows 95. OS/2 Warp Connect also took the *InfoWorld* top honors for Best Client Product of the Year, topping both Microsoft® Windows 95 and Windows NT Workstation.

### **There’s never been a better time**

Why wait for someone else to bring advanced technology, industrial-strength connectivity and exceptional usability together in a single operating environment? You can get it all today, in *one* box, with OS/2 Warp 4. . . and save time and money in the process. So whether you’re waiting for the “right” 32-bit operating system to come along—or tired of not getting everything you need from the one you’re using today—there’s never been a better time than now to make the switch to OS/2 Warp 4.

**Features****Benefits**

**Be at the leading edge with the first major PC operating system solution to offer built-in speech recognition**

- IBM's latest VoiceType technology makes computing as simple as talking—just tell the computer what you would normally type or click
- Work hands-free and eyes-free, and concentrate on *what* you're doing, not *how* you're doing it
- VoiceType for OS/2 Warp is available in six languages: U.S. English, U.K. English, French, German, Italian and Spanish
- Use voice macros to repeat complex, multi-step tasks with a single word or phrase
- Dictate memos, notes and reports and paste them into word processing or e-mail applications using the fastest, most accurate speech dictation available today

**The network-ready system that's right for today's connected world**

- Turn your PC into a universal client, ready to connect IBM and NetWare® LANs; TCP/IP and SNA enterprise networks; OS/2 Warp and Windows NT™ servers; mainframe, RISC-based and AS/400® servers; and more
- Accessing and sharing information across multiple network and intranet connections simultaneously has never been easier—simply click on where you want to go, and drag-and-drop files from one place to another
- Share files, printers and modems directly with co-workers, using peer-to-peer networking
- Take work home or on the road without missing a beat, thanks to built-in Remote Access and Mobile Office Services
- You'll be e-mail ready with Lotus® Notes Mail® included in the box, plus Simple Mail Transfer Protocol support

**The Web's part of your work day... shouldn't it be part of your desktop?**

- OS/2 Warp 4 gives you the quickest and easiest route to the Internet: place icons for favorite World Wide Web sites onto your desktop, then "click" to instantly launch a home page or drag-and-drop FTP files
- Download, when available, Netscape Navigator for OS/2 Warp at no additional charge
- Give users high-speed LAN access to the Internet, with the added security of firewall support

**Choose the proven, stable 32-bit environment for business-critical applications**

- Trust your business to OS/2 Crash Protection—it keeps your system up and running even if an application fails
- Implement advanced applications, including full-motion video, MPEG video playback and digital sound
- Exchange data freely between DOS, Windows and OS/2 programs. . . without sacrificing system stability
- Eliminate DOS and Windows memory constraints and gain a performance boost for many legacy applications

**Use the software and hardware that best meet your needs... today, and tomorrow too**

- Run most DOS, Windows and Java applications, with the flexibility to migrate to full 32-bit OS/2 applications later
- Use TrueType fonts with your OS/2 applications
- Support for Open32 and OpenDoc for OS/2—for next-generation object-oriented compound documents—adds up to a no-compromise environment for cross-platform development
- Thanks to OpenGL advanced 3D graphics, you can run technical and engineering programs on your PCs
- Plug and Play (PnP) support makes adding most PnP-enabled devices and PCMCIA cards a snap

**Work smarter, not harder—it's the better way to get more done!**

- With true preemptive multitasking for both 32-bit and 16-bit applications, you can work unhindered on one task while OS/2 Warp handles others in the background, like faxing or downloading files
- Drag all the programs and files you need for a project into a single folder, then take advantage of OS/2 Warp's unique work-area capabilities to open and close them all in a single step

**The operating system that's simple to use... and fun, too!**

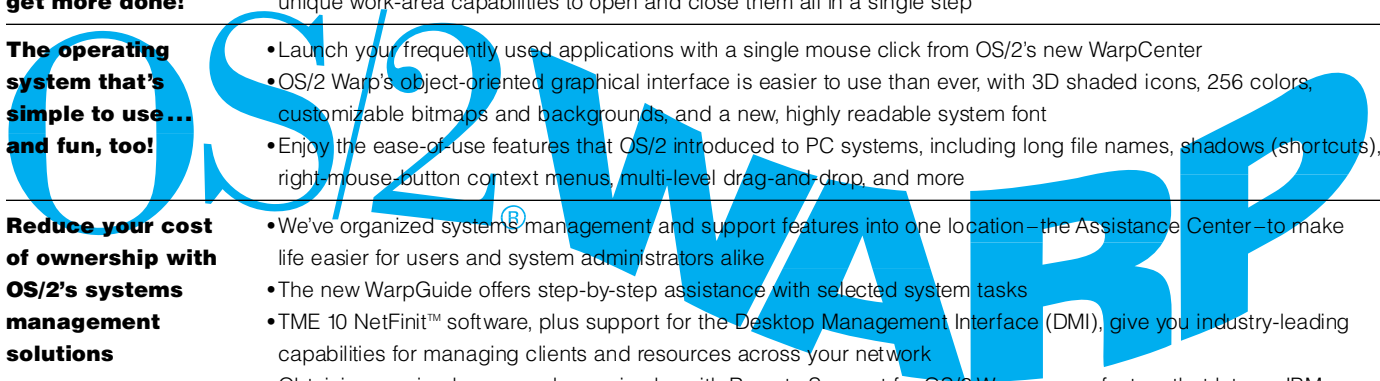
- Launch your frequently used applications with a single mouse click from OS/2's new WarpCenter
- OS/2 Warp's object-oriented graphical interface is easier to use than ever, with 3D shaded icons, 256 colors, customizable bitmaps and backgrounds, and a new, highly readable system font
- Enjoy the ease-of-use features that OS/2 introduced to PC systems, including long file names, shadows (shortcuts), right-mouse-button context menus, multi-level drag-and-drop, and more

**Reduce your cost of ownership with OS/2's systems management solutions**

- We've organized systems management and support features into one location—the Assistance Center—to make life easier for users and system administrators alike
- The new WarpGuide offers step-by-step assistance with selected system tasks
- TME 10 NetFinit™ software, plus support for the Desktop Management Interface (DMI), give you industry-leading capabilities for managing clients and resources across your network
- Obtaining service has never been simpler with Remote Support for OS/2 Warp, a new feature that lets an IBM service representative dial directly into a user's system to help with problem determination and resolution

**The new BonusPak gives you instant productivity, right out of the box**

- Experience the full power of OS/2 Warp's most advanced features with IBM Works, a set of full-function applications for word processing, spreadsheets, charting, data filing and report writing
- FaxWorks Lite for OS/2 gives you two solutions in one: drag-and-drop fax *plus* an answering machine
- Go online with CompuServe® Information Manager for OS/2 and HyperACCESS Lite for OS/2
- Have a technical question? Just AskPSP, your personal help desk for answers to frequently asked questions.



## OS/2 Warp 4 system requirements

<b>Processor*</b> (or compatible) and <b>Memory*</b> (RAM)	<ul style="list-style-type: none"><li>• Minimum 486 33MHz or higher with 12MB-16MB memory</li><li>• For speech navigation, Pentium® 75MHz or higher with 4MB additional memory recommended</li><li>• For speech navigation and dictation, Pentium 100MHz or higher with 8MB-12MB additional memory recommended</li></ul>
<b>Disk space*</b>	<ul style="list-style-type: none"><li>• Installation by selecting options requires 100MB-300MB of free hard disk space across user-selectable partitions</li><li>• Easy Installation (IBM-preselected options) requires 200MB of free disk space</li></ul>
<b>Removable media</b>	<ul style="list-style-type: none"><li>• 1.44MB 3.5" diskette drive "A" and an OS/2-compatible CD-ROM drive</li></ul>
<b>Display</b>	<ul style="list-style-type: none"><li>• 640 x 480 resolution video with 256 colors recommended (SVGA mode)</li></ul>
<b>Pointer</b>	<ul style="list-style-type: none"><li>• IBM-compatible mouse</li></ul>
<b>Communications</b>	<ul style="list-style-type: none"><li>• 14.4Kbps or higher modem for Internet or remote access</li><li>• Network connection via supported LAN adapter for internet/intranet access</li></ul>
<b>Audio</b>	<ul style="list-style-type: none"><li>• Supported sound card for speech and multimedia</li><li>• Noise-canceling microphone<sup>4</sup> and adapter for speech</li></ul>

\*Processor, memory (RAM) and free hard disk space requirements will vary depending on user-selected options installed, applications and data.

## Network support

### Client and peer compatibility

- OS/2 Warp Server
- OS/2 LAN Server
- Windows NT Server
- Novell® NetWare
- NetWare Director Services
- PC LAN Program
- IPX-SPX
- LANtastic for OS/2
- LANtastic for DOS
- OS/2 Warp Connect
- Windows NT Workstation
- Windows 95
- Windows for Workgroups

### Network protocols

- TCP/IP (including DHCP, DDNS, FTP, TFTP, Telnet, SLIP, PPP, SMTP and SNMP)
- SNA
- NetBIOS

<sup>1</sup>Supports most Windows 3.x and Win32s 1.25a applications.

<sup>2</sup>IBM's OS/2 implementation of Sun Microsystems' Java technology, Java for OS/2 Warp.

<sup>3</sup>OS/2 Warp 4 consists of various products, including the OS/2 Warp Version 4 operating system, BonusPak, VoiceType for OS/2 Warp, networking products, Java for OS/2 Warp and others.

<sup>4</sup>Provided with OS/2 Warp 4 for a limited time only.

IBM, OS/2, AS/400 and Workplace Shell are registered trademarks and Crash Protection, VoiceType, WebExplorer and NetFinity are trademarks of International Business Machines Corporation.

Microsoft, Windows and Windows NT are trademarks or registered trademarks of Microsoft Corporation. Lotus and Notes Mail are registered trademarks of Lotus Development Corporation. Java is a trademark of Sun Microsystems Inc. TME 10 is a trademark of Tivoli Systems. OpenDoc is a trademark of Apple Computer Corporation. OpenGL is a trademark of Silicon Graphics Inc. Other company, product and service names may be trademarks or service marks of others.

Screens shown in this publication are prototypes. Actual screens generated by the product delivered by IBM may differ.



Printed on recycled paper containing 10% recovered post-consumer fiber.



© International Business Machines Corporation 1996

IBM Corporation  
Department 563  
11400 Burnet Road  
Austin, Texas 78758

Printed in the United States of America  
8-96  
All Rights Reserved

References in this publication to IBM products or services do not imply that IBM intends to make them available in all countries in which IBM operates.

